

Figure S1. Absorption spectrum of Cell-Ex.

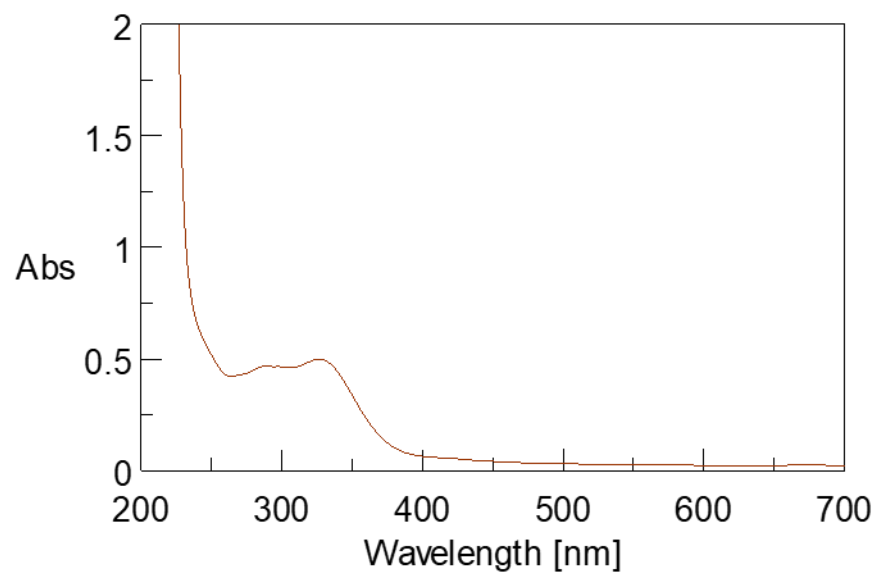


Figure S2. Absorption spectrum of Leaf-Ex.

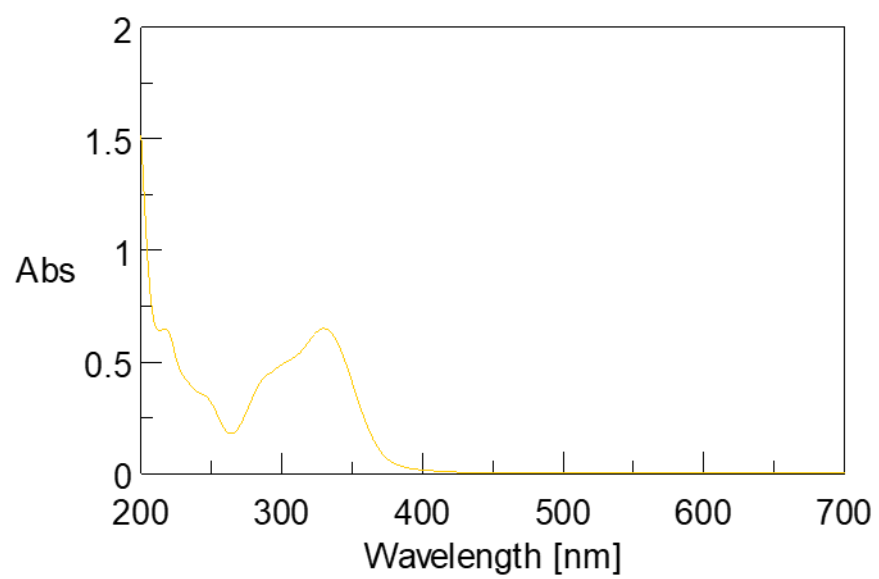


Figure S3. Absorption spectrum of TS.

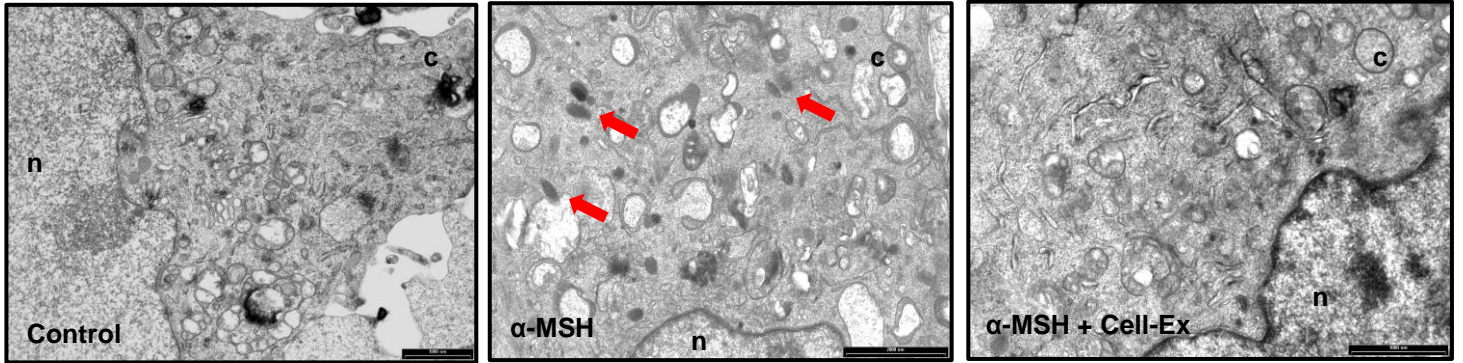


Figure S4. Ultrastructural analysis of B16-F10 cells by TEM (nucleus, n; cytoplasm, c). The red arrows show an example of mature melanosomes (stage IV) (bar: 2000 nm).

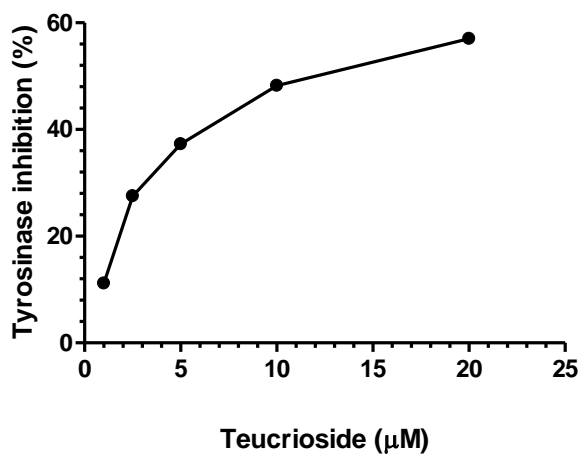
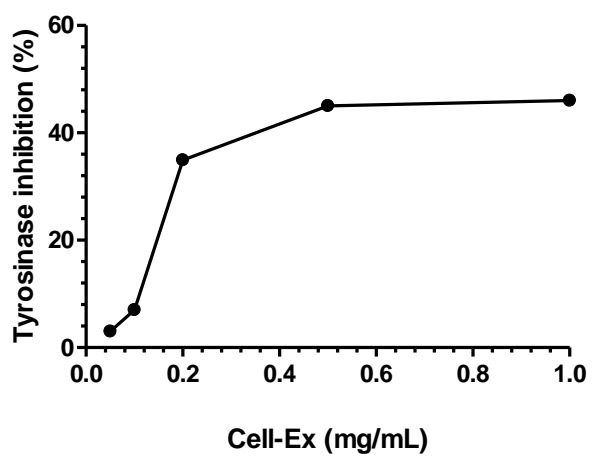


Figure S5. The effects of Cell-Ex and pure TS on mushroom tyrosinase activity.