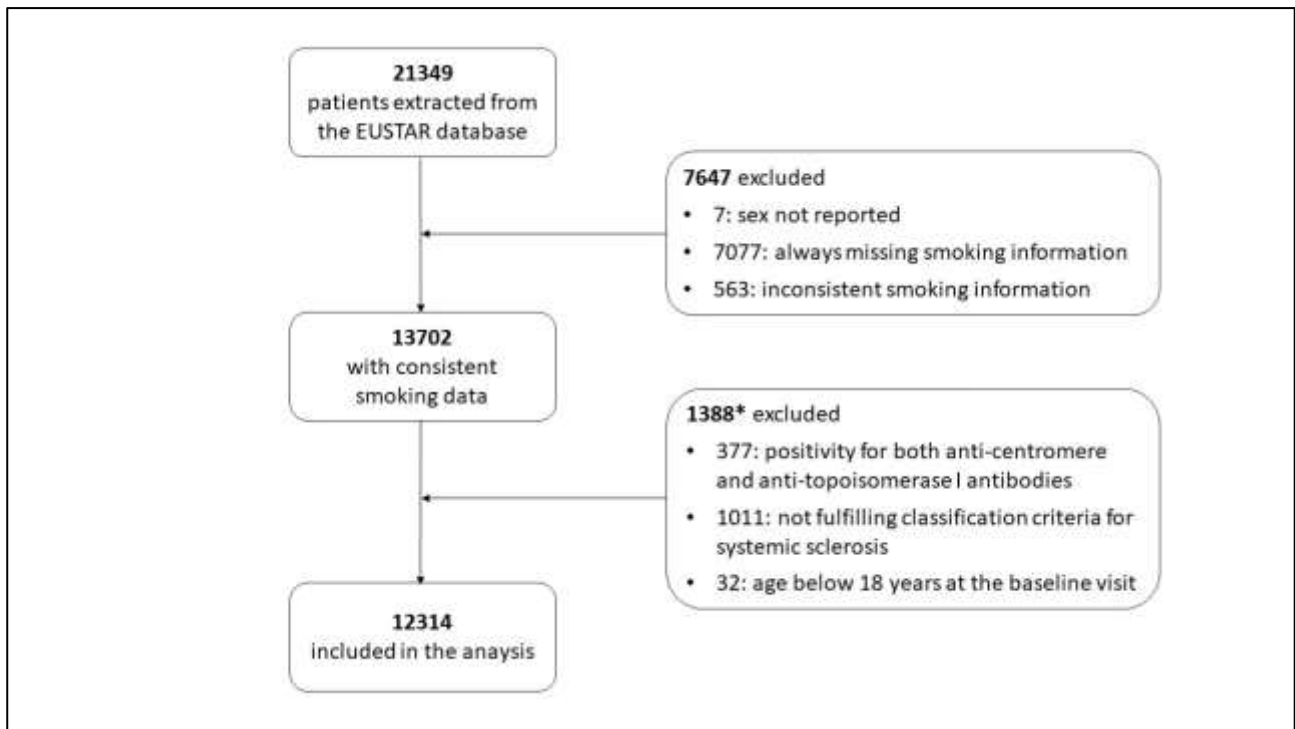


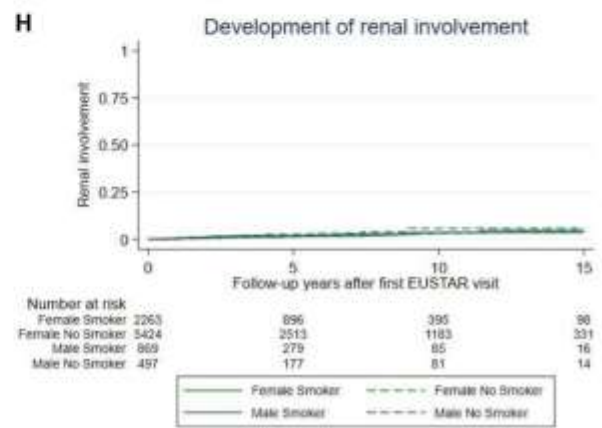
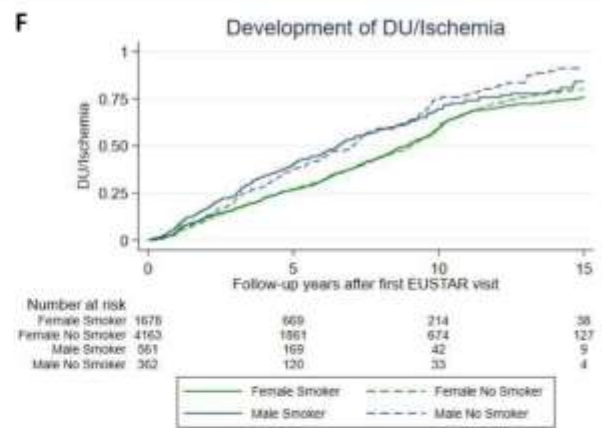
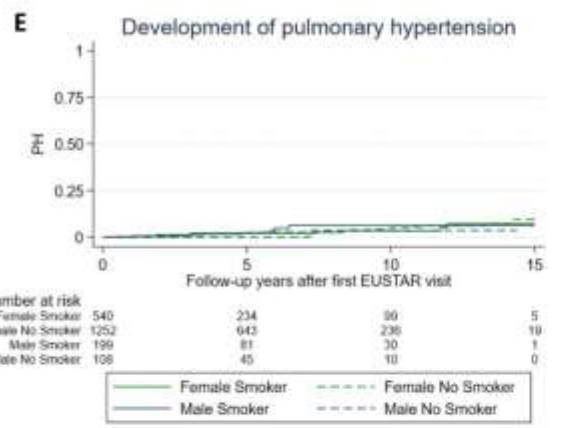
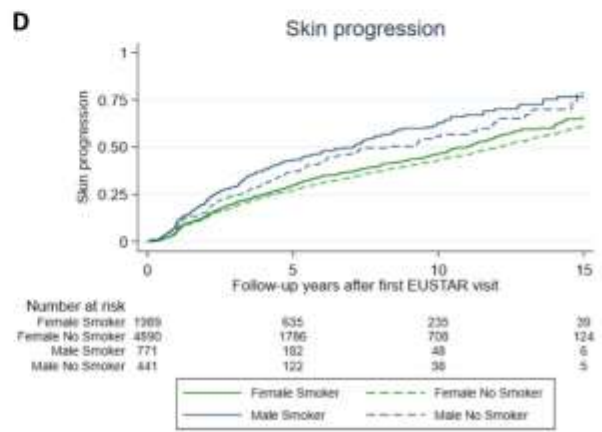
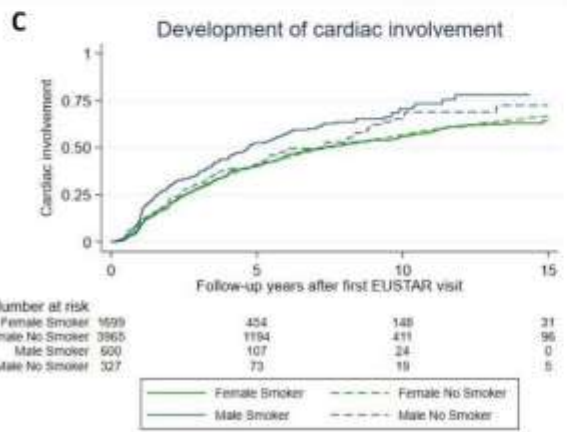
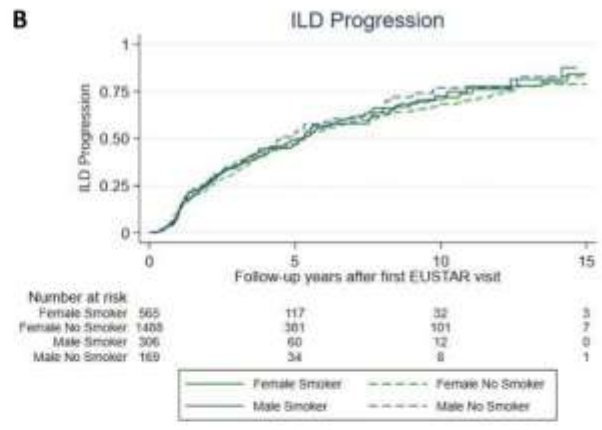
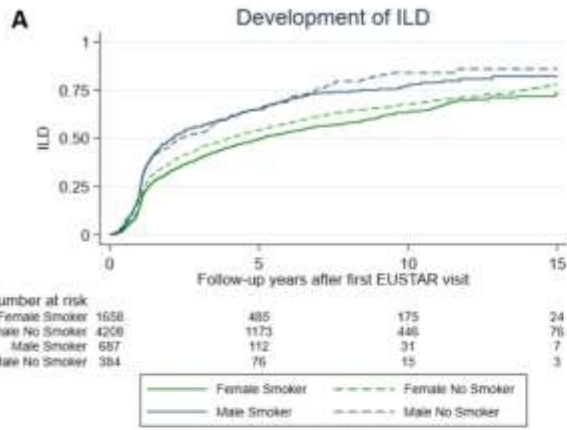
## Supplementary material

**Figure S1.** Flowchart of the EUSTAR patients included in the analysis.



\* Does not sum up as categories are not exclusive.

**Figure S2.** Kaplan–Meier curves of ever-smokers and never-smokers showing development of interstitial lung disease (ILD) (panel A), progression of ILD (panel B), development of cardiac involvement (panel C), progression of skin involvement (panel D), development of pulmonary hypertension (PH) (panel E), development of digital ulcers (DU) or digital ischemia (panel F), development of gastrointestinal involvement (panel G) and development of renal involvement (panel H) in the EUSTAR patients stratified by sex.



**Table S3.** Baseline characteristics of 9,035 patients in the EUSTAR registry excluded from the study.

Demographic and clinical variables		Number of patients with data
Male sex, n (%) <sup>*†</sup>	1,244 (14)	9,028
Age, mean $\pm$ SD, years	55.3 $\pm$ 14.5	9,017
Disease duration, median (IQR), years <sup>†</sup>	8.4 (3.3 - 16.7)	7,408
Extent of skin involvement		7,653
no skin involvement, n (%) <sup>*†</sup>	211 (3)	
only sclerodactyly, n (%) <sup>*†</sup>	883 (12)	
limited cutaneous involvement, n (%) <sup>*</sup>	4,163 (54)	
diffuse cutaneous involvement, n (%) <sup>*†</sup>	2,396 (31)	
Anti-centromere antibodies, n (%) <sup>*</sup>	3,423 (38)	9,028
Anti-topoisomerase I antibodies, n (%) <sup>*†</sup>	3,008 (33)	9,028
Anti-RNA polymerase III antibodies, n (%) <sup>*</sup>	57 (7)	864
Anti-U1RNP antibodies, n (%) <sup>*†</sup>	92 (9)	1,061
Anti-PM/Scl antibodies, n (%) <sup>*</sup>	25 (4)	624
Anti-SSA antibodies, n (%) <sup>*</sup>	43 (11)	396
Modified Rodnan Skin Score, median (IQR)	5 (2 - 12)	6,889
Digital ulcers, n (%) <sup>*†</sup>	500 (28)	1,763
Pulmonary hypertension, n (%) <sup>*</sup>	7 (3)	216
Interstitial lung disease, n (%) <sup>*†</sup>	3,095 (40)	7,744
DLCO % predicted, mean $\pm$ SD <sup>†</sup>	70.5 $\pm$ 28.8	5,960
FVC % predicted, mean $\pm$ SD	93.4 $\pm$ 21.6	3,253
Gastrointestinal symptoms, n (%) <sup>*</sup>	5,925 (67)	8,817

**Legend:** DLCO: diffusing capacity of the lungs for carbon monoxide; FVC: forced vital capacity; IQR: interquartile range; SD: standard deviation. Disease duration was defined since the date of onset of Raynaud's phenomenon; \* percentage is calculated on patients with data available; † statistically significant difference with the included population.