

Supplementary Material

Synthetic torpor triggers a regulated mechanism in the rat brain, favoring the reversibility of Tau protein hyperphosphorylation.

Fabio Squarcio^{1†}, Timna Hitrec^{1†}, Emiliana Piscitiello^{1,4}, Matteo Cerri¹, Catia Giovannini^{3,4}, Davide Martelli¹, Alessandra Occhinegro^{1,4}, Ludovico Taddei¹, Domenico Tupone^{1,2}, Roberto Amici¹ and Marco Luppi^{1,4*}

¹Department of Biomedical and NeuroMotor Sciences, University of Bologna, Bologna, Italy.

²Department of Neurological Surgery; Oregon Health & Science University; Portland, OR – USA.

³Department of Experimental, Diagnostic and Specialty Medicine, University of Bologna, Bologna, Italy.

⁴Centre for Applied Biomedical Research – CRBA, University of Bologna, St. Orsola Hospital, Bologna, Italy.

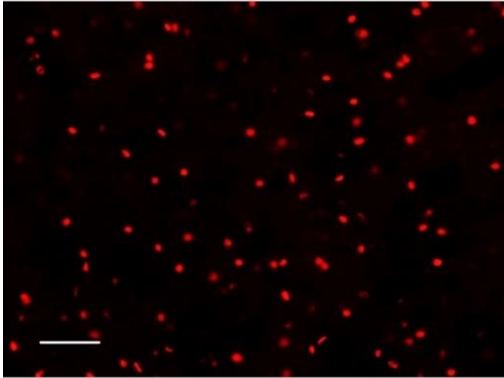
†These authors contributed equally to this work and share first authorship

*** Correspondence:**

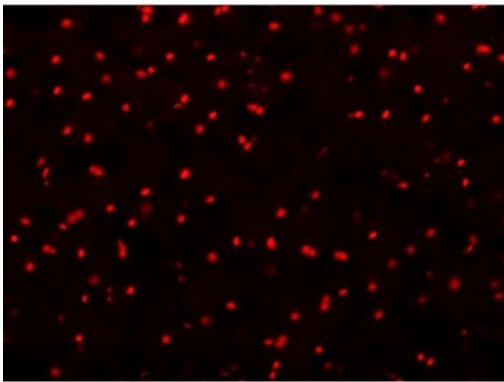
Dr. Marco Luppi, Department of Biomedical and NeuroMotor Sciences, University of Bologna, Bologna, Italy. Piazza di Porta san Donato, 2 – 40126 Bologna, Italy. Phone number: +390512091731. E-mail: marco.luppi@unibo.it

1.1 Supplementary Figures

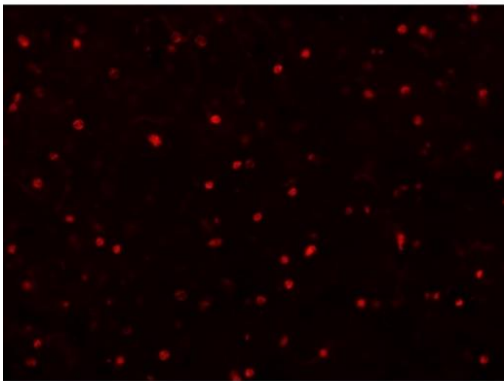
C



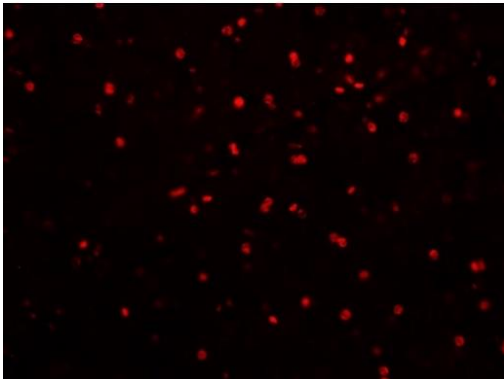
N



R3



R6



Supplementary Figure 1. cleaved-Caspase 3 in P-Cx.

Representative pictures showing samples from the parietal cortex (P-Cx) stained for cleaved-Caspase-3 (secondary antibody conjugated with Alexa-594). Experimental groups (see Figure 1): C, control; N, samples taken at nadir of hypothermia, during synthetic torpor (ST); R3, samples taken 3h after returning to euthermia; R6, samples taken 6h after returning to euthermia. Calibration bar: 50 μ m.