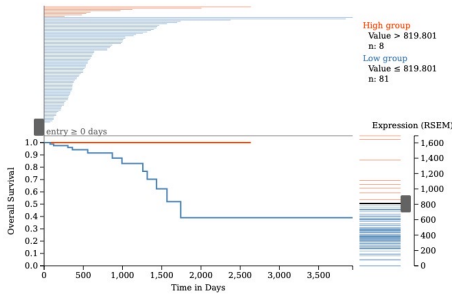


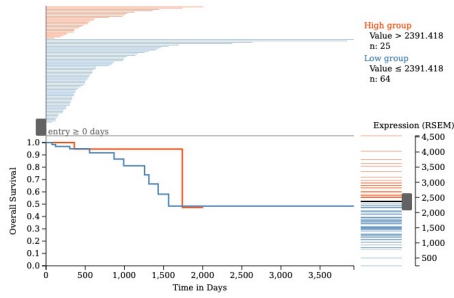
Supplementary Figure S1. Exon/intron organization of Lonp1 gene. The exons included in the ISO1, ISO2 and ISO3 mRNAs are shown in light blue, while the exons excluded are shown in white.

Rectum adenocarcinoma

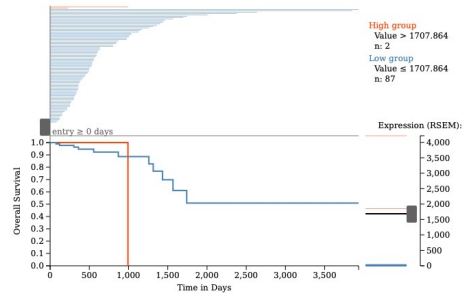
ISO1



ISO2

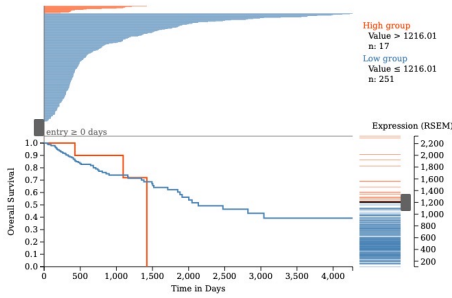


ISO3

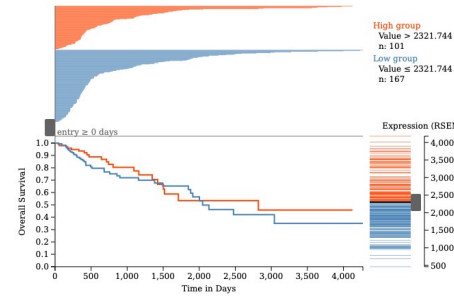


Colon adenocarcinoma

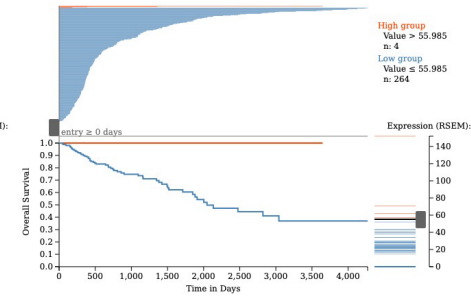
ISO1



ISO2

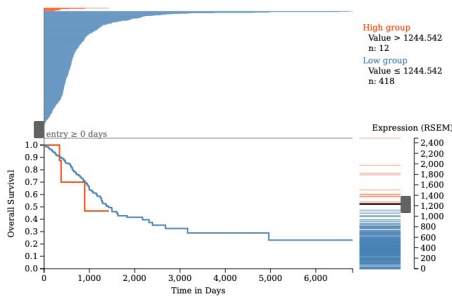


ISO3

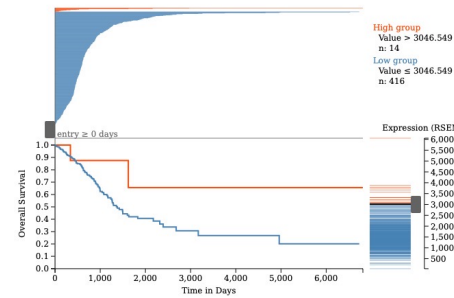


Lung adenocarcinoma

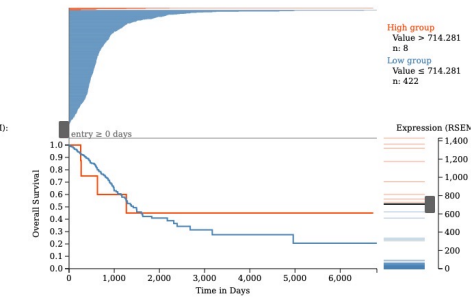
ISO1



ISO2

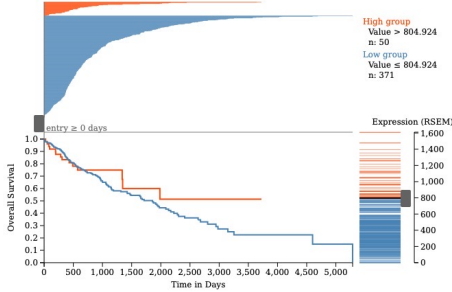


ISO3

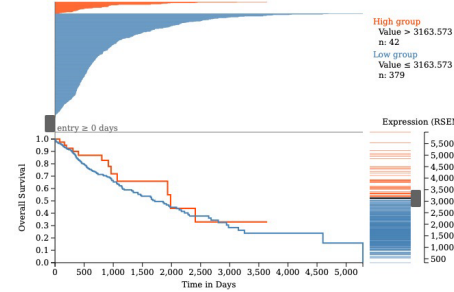


Lung squamous cell carcinoma

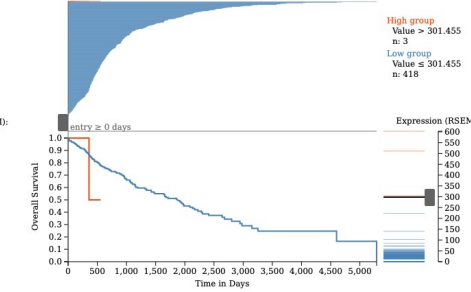
ISO1



ISO2

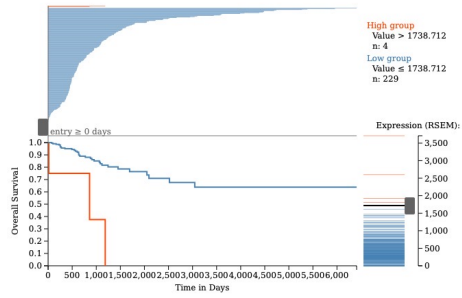


ISO3

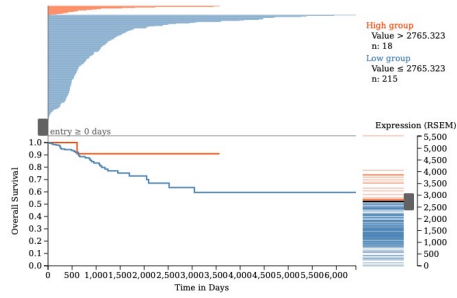


Cervical squamous cell carcinoma and endocervical adenocarcinoma

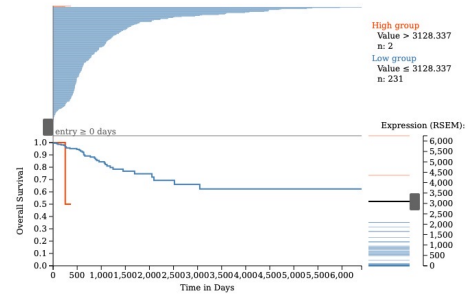
ISO1



ISO2

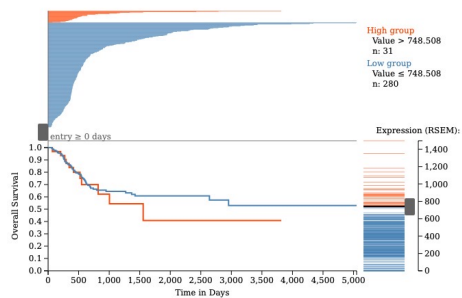


ISO3

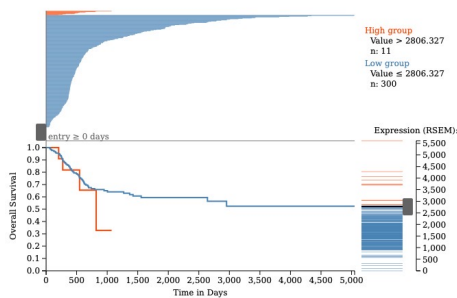


Bladder urothelial carcinoma

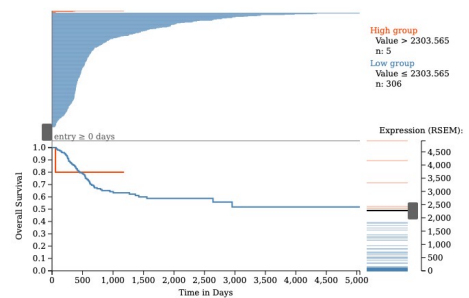
ISO1



ISO2

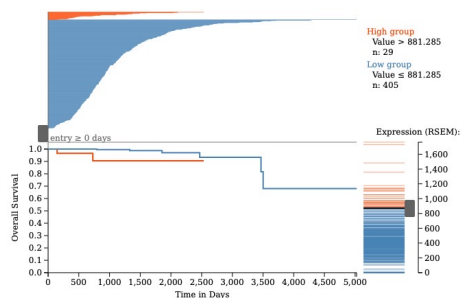


ISO3

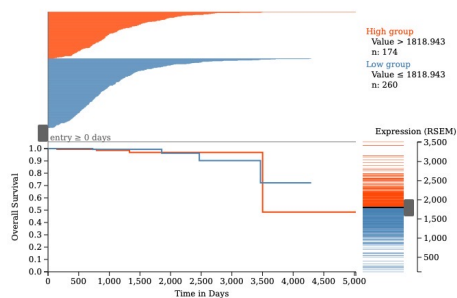


Prostate adenocarcinoma

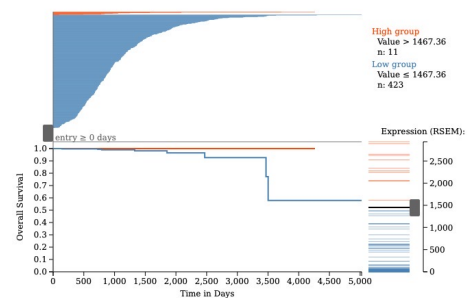
ISO1



ISO2

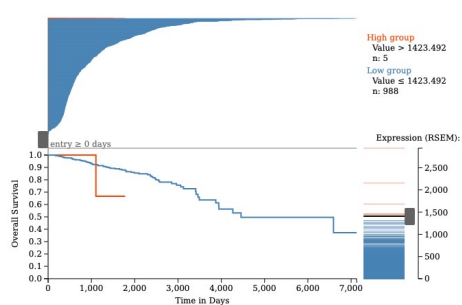


ISO3

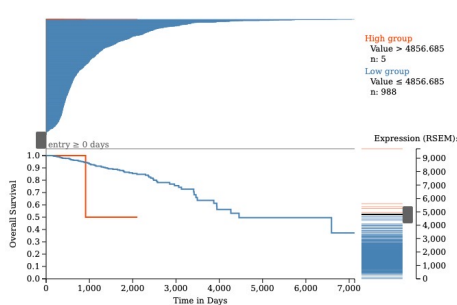


Breast invasive carcinoma

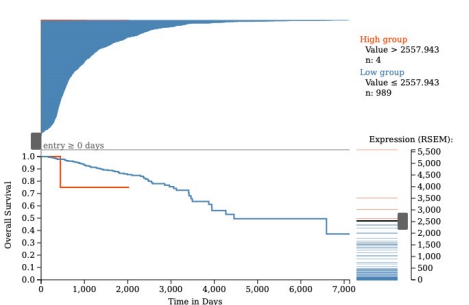
ISO1



ISO2

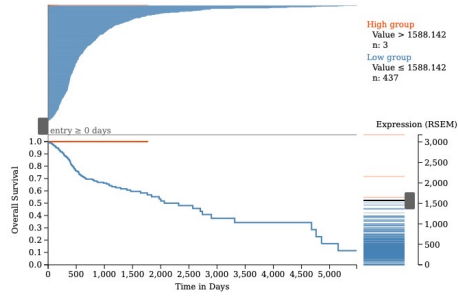


ISO3

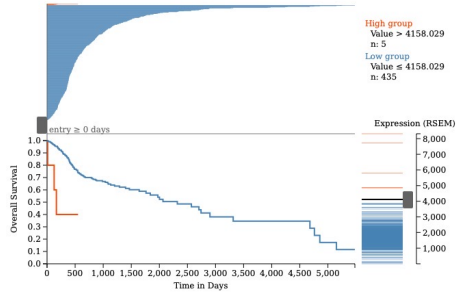


Head and neck squamous cell carcinoma

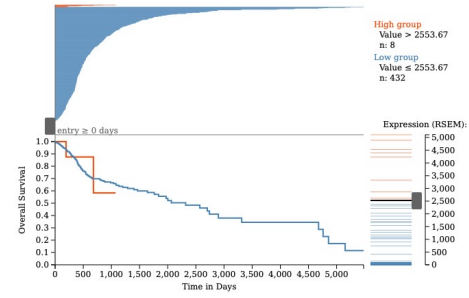
ISO1



ISO2

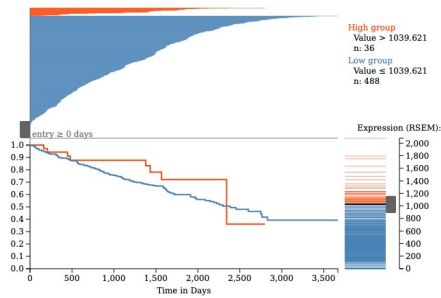


ISO3

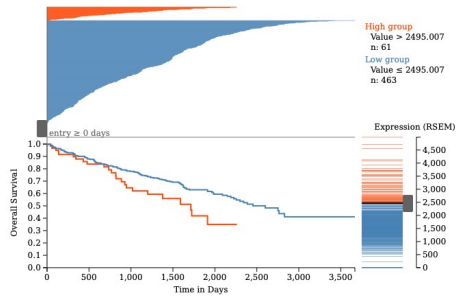


Kidney renal clear cell carcinoma

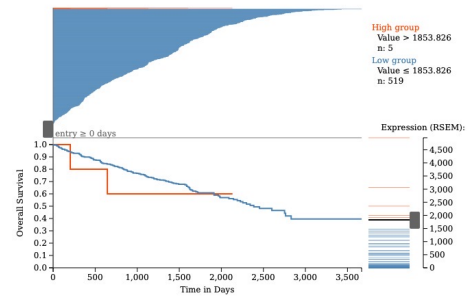
ISO1



ISO2

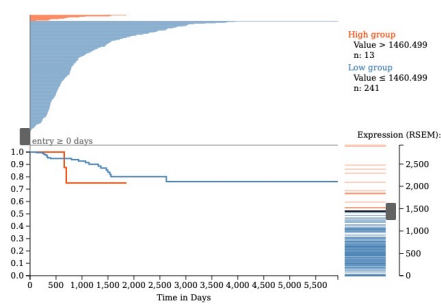


ISO3

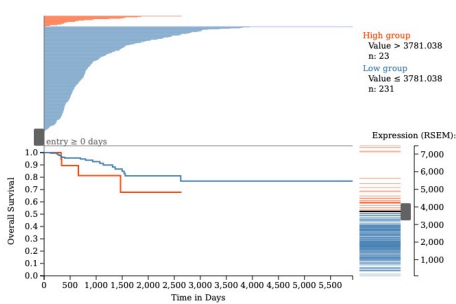


Kidney renal papillary cell carcinoma

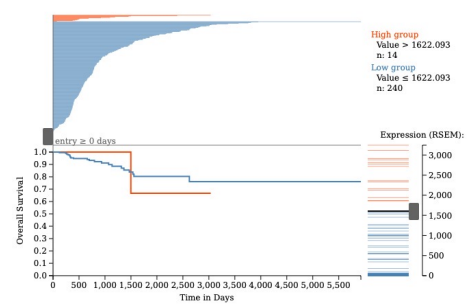
ISO1



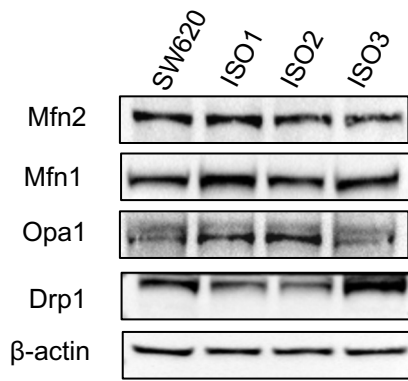
ISO2



ISO3



Supplementary Figure S2. Kaplan-Meier overall survival curves of patients stratified on the expression of Lonp1 isoform-1, isoform-2, and isoform-3 in different primary solid tumours.



Supplementary Figure S3. Effects of Lonp1 isoform-1, isoform-2, and isoform-3 overexpression on mitochondrial dynamics.

Representative immunoblots showing Mfn2, Mfn1, Opa1, and Drp1 expression in SW620 and cells overexpressing Lonp1 isoform-1, isoform-2, and isoform-3.