

# Meta-analysis: Post-COVID-19 functional dyspepsia and irritable bowel syndrome

Giovanni Marasco<sup>1,2</sup>  | Marcello Maida<sup>3</sup>  | Cesare Cremon<sup>2</sup>  |  
 Maria Raffaella Barbaro<sup>2</sup>  | Vincenzo Stanghellini<sup>1,2</sup> | Giovanni Barbara<sup>1,2</sup> 

<sup>1</sup>IRCCS Azienda Ospedaliero Universitaria di Bologna, Bologna, Italy

<sup>2</sup>Department of Medical and Surgical Science, University of Bologna, Bologna, Italy

<sup>3</sup>Gastroenterology and Endoscopy Unit, S. Elia – Raimondi Hospital, Caltanissetta, Italy

## Correspondence

Giovanni Barbara, Department of Medical and Surgical Sciences, University of Bologna, Via Massarenti 9, 40138, Bologna, Italy.  
 Email: [giovanni.barbara@unibo.it](mailto:giovanni.barbara@unibo.it)

## Funding information

Italian Ministry of Education, University and Research; University of Bologna (RFO); Fondazione del Monte di Bologna e Ravenna; Fondazione Carisbo, Bologna, Italy; Horizon 2020 Framework Programme, Grant/Award Number: H2020-SC1-2019 and 2020-SC1-BHC-2018-2020; Italian Ministry of Health, Grant/Award Number: GR-2018-12367062

## Summary

**Introduction:** The burden of post-COVID-19 functional dyspepsia (FD) and irritable bowel syndrome (IBS) remains unclear. The aim of this meta-analysis was to estimate the rate of post-COVID-19 FD and IBS.

**Methods:** MEDLINE, Scopus and Embase were searched through 17 December 2022. Studies reporting the incidence of FD and/or IBS in COVID-19 survivors and controls (without COVID-19), when available, according to the Rome criteria, were included. Estimated incidence with 95% confidence intervals (CI) was pooled. The odds ratio (OR) with 95% confidence intervals (CI) was pooled; heterogeneity was expressed as  $I^2$ .

**Results:** Ten studies met the inclusion criteria and were included in the analysis. Overall, four studies including 1199 COVID-19 patients were considered for FD. Post-COVID-19 FD was reported by 72 patients (4%, 95% CI: 3%–5% and  $I^2$  0%). The pooled OR for FD development (three studies) in post-COVID-19 patients compared to controls was 8.07 (95% CI: 0.84–77.87,  $p=0.071$  and  $I^2=67.9%$ ). Overall, 10 studies including 2763 COVID-19 patients were considered for IBS. Post-COVID-19 IBS was reported by 195 patients (12%, 95% CI: 8%–16%,  $I^2$  95.6% and Egger's  $p=0.002$  test). The pooled OR for IBS development (four studies) in COVID-19 patients compared to controls was 6.27 (95% CI: 0.88–44.76,  $p=0.067$  and  $I^2=81.4%$ ); considering only studies with a prospective COVID-19 cohort (three studies), the pooled OR was 12.92 (95% CI: 3.58–46.60,  $p<0.001$  and  $I^2=0%$ ).

**Conclusions:** COVID-19 survivors were found to be at risk for IBS development compared to controls. No definitive data are available for FD.

Giovanni Marasco and Marcello Maida equally contributed and shared co-first authorship.

As part of AP&T's peer-review process, a technical check of this meta-analysis was performed by Dr Y Yuan.

The Handling Editor for this article was Professor Alexander Ford, and it was accepted for publication after full peer-review.

This is an open access article under the terms of the [Creative Commons Attribution-NonCommercial-NoDerivs](https://creativecommons.org/licenses/by-nc-nd/4.0/) License, which permits use and distribution in any medium, provided the original work is properly cited, the use is non-commercial and no modifications or adaptations are made.

© 2023 The Authors. *Alimentary Pharmacology & Therapeutics* published by John Wiley & Sons Ltd.

## 1 | INTRODUCTION

The COVID-19 pandemic, caused by severe acute respiratory syndrome coronavirus 2 (SARS-CoV-2), has spread globally with over 647 million confirmed cumulative cases according to the World Health Organization on 17 December 2022.<sup>1</sup> Beside the burden for healthcare systems and the significant morbidity and mortality led by COVID-19,<sup>2-4</sup> there is increasing concern about the long-term consequences of COVID-19.<sup>5</sup> This clinical condition, also known as 'long COVID-19' or 'post-acute sequelae of COVID-19', is characterised by the persistence of residual manifestation or the onset of new symptoms after SARS-CoV-2 infection, including pulmonary impairment, neurologic disorders, mental health disorders, functional mobility impairments and general and constitutional symptoms.<sup>6,7</sup> A recent cross-sectional study suggested the presence of at least one post-COVID-19 symptom in 59.7% of hospitalised patients and 67.5% of non-hospitalised patients 2 years after infection.<sup>8</sup>

Among post-COVID-19 manifestation, gastrointestinal symptoms such as abdominal pain, anorexia, diarrhoea, nausea and vomiting have also been reported in a non-negligible rate of patients.<sup>2,6,9</sup> Taken together, these gastrointestinal symptoms may shape a number of post-infection disorders of gut-brain interaction (DGBI),<sup>10</sup> conditions characterised by new-onset, Rome criteria-positive disorders after an episode of acute gastroenteritis in individuals who did not have DGBI before the infection.<sup>11</sup> We recently reported<sup>12</sup> that 1 year after hospitalisation, patients with COVID-19 had fewer problems of constipation and hard stools but reported higher rates of post-infection irritable bowel syndrome (IBS) compared with non-infected controls. In addition, COVID-19 patients reported higher rates of functional dyspepsia (FD), although without statistical significance.<sup>12</sup> Previous studies reported heterogeneous results with this regard.<sup>13,14</sup>

Therefore, the real burden of newly diagnosed FD and IBS affecting COVID-19 survivors still needs to be clarified. Thus, we aimed to assess the incidence of FD and IBS in COVID-19 survivors and its association with COVID-19 diagnosis compared to controls.

## 2 | METHODS

A systematic review and meta-analysis was carried out in line with PRISMA (Preferred reporting items for systematic reviews and meta-analyses) guidelines.<sup>15</sup>

### 2.1 | Search strategy and selection criteria

Primary sources of the reviewed studies were MEDLINE via PubMed, Scopus and Ovid Embase, which were searched systematically up to 17 December 2022.

Searches included combinations of the following keywords: 'dyspepsia' or 'irritable bowel syndrome' or 'gastrointestinal diseases' or

'functional gastrointestinal disorders' and 'coronavirus' or 'SARS-CoV-2'. The complete search strategies are reported in Appendix S1. The first report of cases of COVID-19 have been published on 15 February 2020 which<sup>16</sup> have been elected as initial date for literature search. Besides, the abstracts of the conference proceedings of Digestive Diseases Week, the United European Gastroenterology Week and Asia Pacific Digestive Week from the same period were searched electronically and by hand. The references list of the studies and relevant published reviews included were searched. There were no restrictions on language or publication status. Two authors (GM and MM) carried out the initial selection based on titles and abstracts. A detailed full-text assessment of potentially relevant publications was independently carried out by the two reviewers, with any discrepancies being resolved through discussion or arbitration by a third reviewer (GB). Database searches were supplemented with literature searches of reference lists from potentially eligible articles to find additional studies.

### 2.1.1 | Eligibility criteria

Studies were selected for inclusion if they met the following pre-specified criteria: both single arm studies (that only included COVID-19 patients), as well as comparative studies (comparing COVID-19 patients vs controls) were eligible for inclusion if reporting new diagnosis of IBS or FD according to Rome III or IV criteria<sup>17,18</sup> within a cohort of adult (more than 18 years old). The Rome III and IV criteria require at least 6 months since symptom onset and 3 months meeting the diagnostic criteria, but the 6 months duration criteria can be shortened when a clinician has evaluated the symptoms sufficiently and it is satisfied that other diagnoses are confidently excluded.<sup>19</sup> Confirmed COVID-19 cases refer to the definitions according to the World Health Organization document released in March 2020,<sup>20</sup> thus a confirmed COVID-19 case is a person with laboratory confirmation of COVID-19 infection, irrespective of clinical signs and symptoms. In comparative studies, subjects/patients without a COVID-19 diagnosis were included as controls. Studies that only included COVID-19 patients with IBS or FD and case reports, were excluded. Studies that did not meet the inclusion criteria or in which essential information was missing or cannot be obtained from the authors were also excluded.

### 2.1.2 | Data collection process and quality assessment

Relevant data were independently extracted by two authors (GM and MM), using a standardised form. The following items were extracted from each study: year of publication, country, the study design, the study setting (outpatient or hospitalised COVID-19 patients and controls when available), the total number of patients, including age and gender of the participants, the total number of

COVID-19 patients with and without FD and with or without IBS, the follow-up length in months, the Rome criteria used for DGBI diagnosis, the exclusion of patients with previous chronic gastrointestinal diseases or symptoms and, when available, the total number of controls with and without FD and with or without IBS. In case of multiple publications for a single study, the latest publication was considered and supplemented, if necessary, with data from the previous publications. The quality of selected studies was independently assessed by two investigators (MM and GM) using the National Institutes of Health (NIH) Quality Assessment Tool for Observational Cohort and Cross-Sectional Studies.<sup>21</sup> Overall, quality of studies was rated as Good, Fair or Poor. Discrepancies between reviewers concerning qualitative assessment were infrequent (overall inter-observer variation <10%), and disagreements were resolved through discussion and arbitration by a third reviewer (GB), when necessary.

## 2.2 | Data analysis

The primary outcome was the pooled FD and IBS incidence rates. Rates of events were expressed as proportions for all studies and used to calculate pooled FD and IBS incidence rates. After data extraction, 95% confidence intervals (CI) of FD and IBS rates for each study were calculated using a random-effect model, using the method of DerSimonian and Laird, to provide a conservative estimate of the incidence of FD and IBS. Heterogeneity across the studies was assessed using the  $I^2$  statistic. In particular, the value of  $I^2$  describes the percentage of variability in point estimates which is due to heterogeneity rather than to sampling error: for an  $I^2 < 50\%$ , the risk of heterogeneity between studies was ranked low-moderate, whereas for  $I^2 \geq 50\%$ , the risk of heterogeneity was ranked high.<sup>22</sup> Heterogeneity between studies was investigated by conducting subgroup analyses and reporting the test for heterogeneity between subgroups. In presence of at least 10 studies, to explore heterogeneity, the impact of confounding covariates (country, study design, study setting, length of follow-up, exclusion of patients with previous gastrointestinal disease and methodological quality of the studies included according to NIH) on the meta-analytic results was evaluated using meta-regression analysis,<sup>23</sup> reporting  $\beta$  coefficient  $\pm$  standard error (SE). Since a low number of studies have been found, the  $p$  values were also recalculated using Monte Carlo permutation<sup>24</sup> with a number of permutations of 5000 in order to obtain sufficient precision.<sup>25</sup> For FD, due to the low number of studies we conducted sensitivity analyses excluding only retrospective studies. For IBS, we conducted sensitivity analyses excluding retrospective studies and those without the exclusion of patients with previous chronic gastrointestinal diseases. Publication bias was investigated using the Egger test; a  $p < 0.05$  indicated a significant small size study effect. For assessing the risk of IBS or FD among subjects with and without COVID-19, odds ratio (OR) was calculated for each individual study; afterwards, estimates were pooled, and 95% CI

and  $p$  values were calculated. All analyses were carried out using STATA statistical software (Stata Corp).

## 3 | RESULTS

### 3.1 | Study selection

The electronic search identified a total of 2057 records; after title screening and duplicates removal, 260 articles were screened and finally 20 full-text articles were assessed for eligibility (Figure 1). Of the 20 records selected, five studies were excluded for reporting FD or IBS without using Rome criteria,<sup>26–30</sup> three for reporting FD or IBS rates without reporting COVID-19 diagnosis,<sup>31–33</sup> one for reporting FD and IBS in children<sup>34</sup> and one for inability to extract number of subjects and/or number of events from cases.<sup>35</sup>

Thus, a total of 10 studies,<sup>12–14,36–42</sup> all full texts, met the eligibility criteria and were included in the meta-analysis.

### 3.2 | Study description

Table 1 resumes the main characteristics and the main outcomes of the 10 studies included in the meta-analysis. A total of 3998 patients were considered, of whom 2763 (69.1%) COVID-19 patients and 1235 (30.9%) controls. In all studies, COVID-19 testing was performed for the presence of symptoms, except one with testing performed within a routine public health surveillance programme.<sup>39</sup> The rate of females included in the studies ranged from 27.1%<sup>14</sup> to 70%.<sup>37</sup> The median age of patients included ranged from 29<sup>14</sup> to 68 years.<sup>42</sup> Four studies were carried out in North America,<sup>36–39</sup> three in Europe<sup>12,13,42</sup> and three in the Middle East and Asia.<sup>14,40,41</sup> Four studies had a retrospective design,<sup>13,36–38</sup> four studies a prospective design,<sup>12,39–41</sup> one study reported a prospective COVID-19 group and a retrospective control group<sup>14</sup> and one study reported on prospectively assessed data on a retrospective cohort.<sup>42</sup> Two studies reported that FD and/or IBS criteria were applied after a follow-up of <6 months,<sup>13,40</sup> five after a follow-up of 6 months<sup>14,38,39,41,42</sup> and three after a follow-up of more than 6 months.<sup>12,37,38</sup> Six studies reported of hospitalised COVID-19 patients,<sup>12,14,38,40–42</sup> three of hospitalised and/or outpatients COVID-19 subjects<sup>13,36,37</sup> and one study did not report this data.<sup>39</sup> Among studies reporting a control group, two compared outpatient or hospitalised COVID-19 with healthy controls,<sup>13,40</sup> one compared hospitalised COVID-19 with COVID-19-negative outpatients<sup>14</sup> and one compared hospitalised COVID-19-positive versus -negative patients.<sup>12</sup> All except two studies,<sup>36,41</sup> excluded patients with previous chronic gastrointestinal diseases, while only one study<sup>12</sup> excluded patients with previous gastrointestinal symptoms.

Table 1 summarises the methodological quality evaluation of the studies included, which is detailed in Table S1. All the studies showed good or fair quality according to the NIH quality assessment scale.

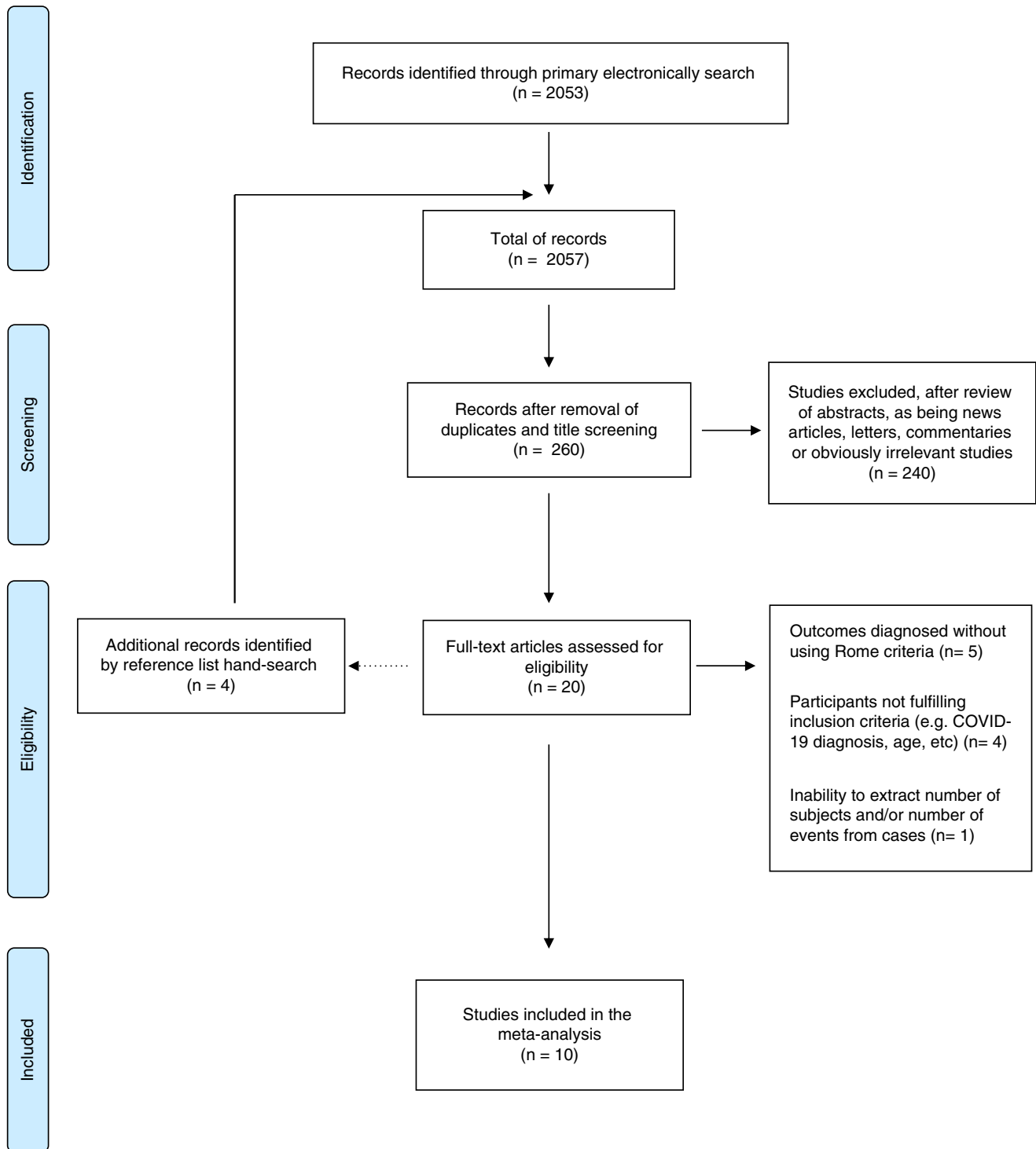


FIGURE 1 Preferred reporting items for systematic reviews and meta-analyses (PRISMA) flow diagram of the systematic literature search and studies included in the meta-analysis.

### 3.3 | Functional dyspepsia

Among the four studies reporting the incidence of post-COVID-19 FD, 1199 COVID-19 patients were considered for the assessment of FD pooled incidence rate. Post-COVID FD was reported by 72 patients (4%, 95% CI: 3%–5%) without heterogeneity between studies ( $I^2$  0%) (Figure S1). Considering the three studies with a control

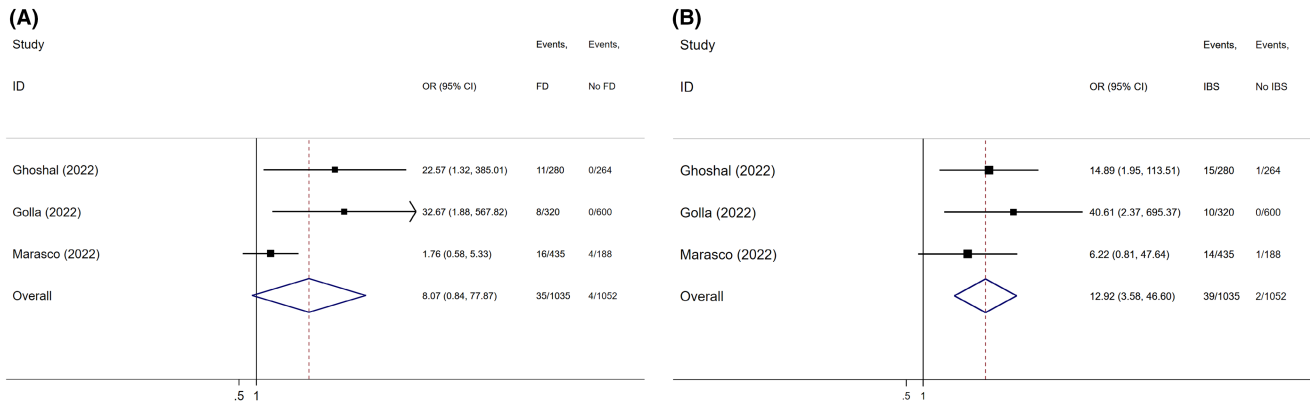
group, a total of 2087 patients were included, of whom 1035 (49.6%) COVID-19 patients were compared to 1052 (50.4%) controls; FD was reported in 3% of COVID-19 patients (95% CI: 2%–4%) and 2% of controls (95% CI: 1%–5%). The pooled OR for FD development in COVID-19 patients compared to controls was 8.07 (95% CI: 0.84–77.87,  $p=0.071$ ) (Figure 2A), with substantial heterogeneity between the studies ( $I^2=67.9\%$ ).

TABLE 1 Characteristics of the studies included in the meta-analysis.

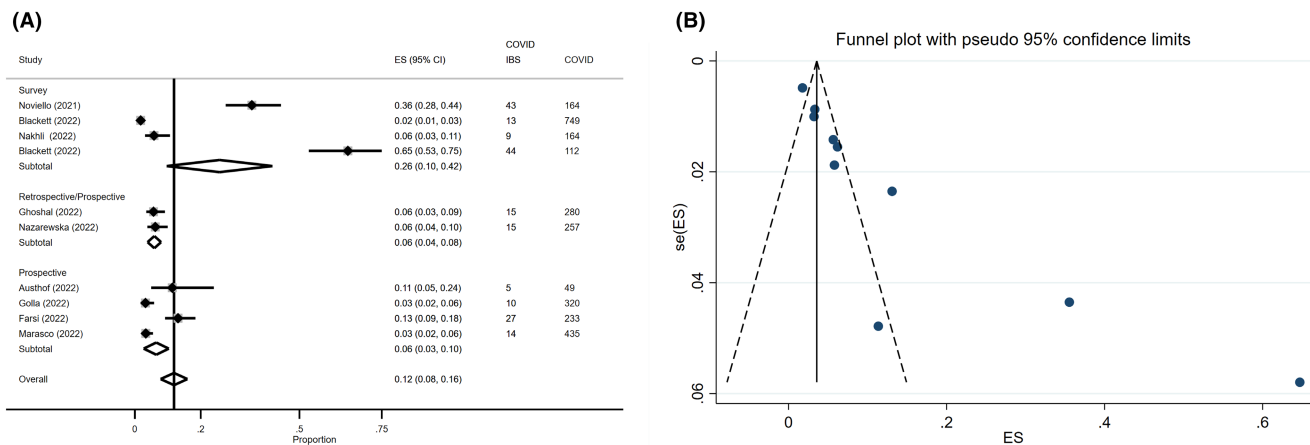
Study, year	Country	Age (years) COVID-19/controls (mean)	Sex (females, %) COVID-19/controls	Design	Setting COVID-19/controls	Follow-up (months)	COVID-19/controls n	FD in COVID-19/controls n (%)	IBS in COVID-19/controls n (%)	Rome criteria	Exclusion of patients with chronic GI disease	Exclusion of patients with previous GI symptoms	Overall NIH quality assessment <sup>a</sup>
Noviello D et al., 2021 <sup>13</sup>	Italy	44.1 (mean)/39.6 (mean)	40.2%/60.7%	Internet-based survey	Outpatient and hospitalised/healthy controls	4.8 ± 0.3 months	164/183	-	43 (26%)/46 (25.1%)	Rome IV	Yes	No	Good
Blackett JW et al., 2022 <sup>36</sup>	United States	43 (median)	67%	Internet-based survey	Outpatient (92.6%), hospitalised (7.4%)	6 months	749/0	-	13 (1.7%)	Rome IV	No	No	Fair
Nakhli et al., 2022 <sup>27</sup>	United States	≤65 years (79%)	70%	Internet-based survey	Outpatient (60%), hospitalised (24%)	6–9 months	164/0	37 (22.6%)	9 (5.5%)	Rome IV	Yes (IBS)	No	Fair
Blackett JW et al., 2022 <sup>38</sup>	United States	<70 years (63.9%)	49%	Internet-based survey	Hospitalised	At least 6 months	112/0	-	44 (39%)	Rome IV	Yes (IBS)	No	Good
Ghoshal UC et al., 2022 <sup>14</sup>	India/ Bangladesh	29–42 (median)	27.1%	Prospective, retrospective (controls)	Hospitalised/ outpatient	6 months	280/264	11 (4.2)/0	15 (5.3%)/1 (0.4%)	Rome IV (IBS)/ Rome III FD	Yes (IBS)	No	Good
Austhof E et al., 2022 <sup>39</sup>	United States	42.7–45 (mean)	66.3%	Prospective	-	6 months	49/0	-	5 (10.2%)	Rome IV	Yes	No	Good
Golla R et al., 2022 <sup>40</sup>	India	38.02 (mean)/ 37.94–38.47 (mean)	49%/42.2%	Prospective	Hospitalised/ healthy controls	3 months	320/600	8 (2.5%)/0	10 (3.1%)/0	Rome IV	Yes	No	Good
Farsi F et al., 2022 <sup>41</sup>	Iran	38.41 (mean)	58.4%	Prospective	Hospitalised, outpatient	6 months	233/0	-	27 (11.6%)	Rome IV	No	No	Good
Nazarevska A et al., 2022 <sup>42</sup>	Poland	68 (median)	45.1%	Prospective questionnaire, retrospective cohort	Hospitalised	6 months	257/0	-	15 (5.8%)	Rome IV	Yes (IBS)	No	Fair
Marasco G et al., 2022 <sup>12</sup>	Multicentre (Europe based)	49.9 (mean)/50.9 (mean)	40.1%/37.9%	Prospective	Hospitalised	12 months	435/188	16 (3.7%)/4 (2.1)	14 (3.2%)/1 (0.5%)	Rome IV	Yes	Yes	Good

Abbreviations: COVID-19, Coronavirus Disease 2019; FD, functional dyspepsia; GI, gastrointestinal; IBS, irritable bowel syndrome; NIH, National Institutes of Health.

<sup>a</sup>The quality of selected studies was independently assessed by two investigators (MM and GM) using the National Institutes of Health (NIH) Quality Assessment Tool for Observational Cohort and Cross-Sectional Studies.<sup>21</sup> Overall quality of studies was rated as Good, Fair or Poor. Discrepancies between reviewers concerning qualitative assessment were infrequent (overall inter-observer variation <10%), and disagreements were resolved through discussion.



**FIGURE 2** (A) Forest plot of the pooled FD incidence rate among COVID-19 patients and controls in prospective studies. (B) Forest plot of the pooled IBS incidence rate among COVID-19 patients and controls in prospective studies. CI, confidence interval; FD, functional dyspepsia; IBS, irritable bowel syndrome; OR, odds ratio.



**FIGURE 3** (A) Forest plot of the pooled irritable bowel syndrome incidence in COVID-19 patients according to the study design. CI, confidence interval; ES, estimated proportion. (B) Funnel plot visual to asymmetry due to the 'small sample size'. SE of ES: Standard error of estimated proportion; ES, estimated proportion; Dotted black line: the line of pseudo 95% confidence limits; Solid black line: the line of overall effect; and Blue point: each study included.

**TABLE 2** Results of univariable meta-regression analysis for assessing factor influencing post-COVID-19 IBS incidence.

Covariates	Number of studies	Beta coefficient $\pm$ SE	Adjusted $R^2$ (%)	$p$ value	$p$ value $\pm$ SE after Monte Carlo permutation
Country (North America vs Europe vs Middle East/Asia)	10	0.938 ( $\pm$ 0.071)	-4.49%	0.424	0.486 (0.007)
Study design (survey vs retrospective/prospective vs prospective)	10	0.894 ( $\pm$ 0.070)	10.08%	0.191	0.221 (0.006)
Study setting (outpatient vs hospitalised vs mixed)	10	1.034 ( $\pm$ 0.080)	-11.11%	0.678	0.655 (0.007)
Length of follow-up (<6 vs 6 vs >6 months)	10	1.038 ( $\pm$ 0.097)	-11.95%	0.703	0.825 (0.005)
Exclusion of patients with previous gastrointestinal disease (no vs yes)	10	1.095 ( $\pm$ 0.176)	-9.59%	0.588	0.728 (0.006)
NIH (fair vs good)	10	1.154 ( $\pm$ 0.154)	1.50%	0.311	0.278 (0.006)

Abbreviations: NIH, National Institutes of Health;  $R^2$ , relative reduction in between-study variance: the value indicates the proportion of between study variance explained by covariate; SE, standard error.

### 3.4 | Irritable bowel syndrome

Among the 10 studies reporting the incidence of post-COVID-19 IBS, 2763 COVID-19 patients were considered for the assessment of IBS pooled incidence rate. Post-COVID IBS was reported by 195 patients (12%, 95% CI: 8%–16%), with high heterogeneity ( $I^2$  95.6%) between studies; 'small study effect' was observed using the Egger test ( $p=0.002$ ) (Figure 3). Figure S2 reports IBS incidence in subgroup analysis according to different possible confounding covariates in order to explore heterogeneity between studies, such as study design ( $p=0.06$ ) country ( $p=0.15$ ), study setting ( $p=0.02$ ), length of follow-up ( $p=0.09$ ) and the exclusion of patients with previous chronic gastrointestinal diseases ( $p<0.01$ ). IBS rates were higher in retrospective studies, in studies from North America or reporting on hospitalised patients or with a follow-up >6 months or reporting results after the exclusion of patients with previous chronic gastrointestinal diseases. As example, considering only studies including a prospective COVID-19 cohort, the IBS incidence dropped down to 6% (95% CI: 3%–10%), but heterogeneity remained high ( $I^2$  83.8%) (Figure 3). However, meta-regression analysis (Table 2) showed that overall estimates on post-COVID-19 IBS incidence was not affected by the study design, geographic origin, patient's setting, length of follow-up, the exclusion of patients with previous chronic gastrointestinal diseases or the study quality according to the NIH quality assessment scale. As part of sensitivity analyses, according to the test of heterogeneity in subgroup analysis, we excluded studies reporting retrospective COVID-19 cohorts and those reporting results without excluding patients with previous gastrointestinal diseases,<sup>13,36–38,41</sup> finding a pooled IBS incidence rate of 4% (95% CI: 3%–6%), with a low-moderate heterogeneity ( $I^2$  41.9%) between studies (Figure S3). Functional dyspepsia and IBS incidences at different time points, after excluding studies with retrospective COVID-19 cohorts, are reported in Figure S4.

Considering the four studies with a control group,<sup>12–14,40</sup> a total of 2434 patients were considered, of whom 1199 (49.3%) COVID-19 patients were compared to 1235 (50.7%) controls; IBS was reported in 9% of COVID-19 patients (95% CI: 4%–15%) and 7% of controls (95% CI: 2%–11%). The pooled OR for IBS development in COVID-19 patients compared to controls was 6.27 (95% CI: 0.88–44.76,  $p=0.067$ ), with high heterogeneity between the studies ( $I^2=81.4%$ ) (Figure S5). After excluding the only retrospective study included in this sub-analysis,<sup>13</sup> the pooled OR for IBS development in COVID-19 patients compared to controls was 12.92 (95% CI: 3.58–46.60,  $p<0.001$ ) (Figure 2B), without heterogeneity between the studies ( $I^2=0%$ ).

## 4 | DISCUSSION

Recent evidence showed that several persistent symptoms can last after acute SARS-CoV-2 infection.<sup>5</sup> This condition is now termed long COVID, and includes multisystemic symptoms such as fatigue, dyspnoea, cardiovascular symptoms, cognitive impairment, sleep

disturbances, symptoms of post-traumatic stress disorder, muscle pain, concentration problems and headache.<sup>5</sup> However, the long COVID-19 clinical spectrum has yet to be completely defined due to continuous updates. Moreover, several authors recently reported persistent gastrointestinal symptoms after COVID-19, which have been included in the long COVID-19 definition.<sup>43</sup> This systematic review and meta-analysis of aggregate data from 10 studies assessing the rate of IBS and FD in COVID-19 patients, showed an overall IBS rate of 12%, which dropped down to 4% in high quality studies, and an overall FD rate of 4%. COVID-19 patients had a significant higher probability of developing IBS in prospective studies, with a pooled OR compared with controls of 12.9 according to three studies. The probability of developing FD was higher for COVID-19 compared with controls, although without statistical significance. Our analysis also suggests that the incidence of post-COVID-19 IBS was not significantly influenced by the study design (retrospective vs. prospective), geographic origin, patient's setting (hospitalised vs outpatients), length of follow-up, the exclusion of patients with a previous diagnosis of gastrointestinal disease or the study quality according to the NIH quality assessment scale.

The development of DGBI after an infection has been widely reported by several authors and by a meta-analysis.<sup>44</sup> In particular, IBS incidence was increased after a bout of acute gastroenteritis following infection with bacterial, parasitic/protozoa or viral pathogens.<sup>11</sup> However, few studies have evaluated the incidence of these syndromes following viral infection. Therefore, the evaluation of long-term gastrointestinal symptoms reported by COVID-19 survivors resembling PI-DGBI, represented a unique opportunity to further explore this field.<sup>10</sup> SARS-CoV-2 infection is able to trigger the development of gastrointestinal symptoms during the acute phase of infection,<sup>9</sup> through direct cellular damage, inflammation, gut dysbiosis, enteric nervous system dysfunction and a pro-thrombosis state induced by the virus.<sup>7,9,45</sup> These pathophysiological mechanisms have also been partially found in COVID-19 survivors reporting persistent intestinal and extra-intestinal symptoms, such as gut microbiota modifications, gut dysmotility, increased intestinal permeability and modifications of enteroendocrine cell function and serotonin metabolism.<sup>11,46</sup> Moreover, SARS-CoV-2 nucleic acids have been found in the small bowel of COVID-19 survivors after the acute infection, together with persistent aberrant immunological activation.<sup>47,48</sup> Therefore, the pathophysiological process underlying long gastrointestinal COVID-19 are similar to those found in other PI-DGBI,<sup>11</sup> additionally pointing out their biological plausibility.<sup>12</sup>

To date, only one preliminary pooled data analysis tried to assess the frequencies of IBS (four studies) and FD (three studies) after COVID-19, although without using the Rome IV criteria for PI-DGBI diagnosis, or without reporting results after the exclusion of patients with previous gastrointestinal disease or compared to a control group.<sup>43</sup> Nevertheless, in this study, the authors reported a frequency of 20% for dyspepsia and of 17% for IBS after COVID-19, with only two and one study reported the frequency of dyspepsia and IBS among patients with long COVID-19 respectively.<sup>43</sup> The small number of studies included, and the mentioned biases may explain the

discrepancies between our results and those by Choudhury et al,<sup>43</sup> which may have overestimated the frequencies of IBS and FD after COVID-19. On the other hand, our results are in line with those of the meta-analysis by Klem et al,<sup>44</sup> that reported an overall prevalence of PI-IBS after a viral infection of 6.4%. However, the authors reported a great variability when examining rates within and beyond 12 months of follow-up after the acute bout of viral infection, accounting for 19.4% and 4.4% respectively.<sup>44</sup> On this line, the only study included in our meta-analysis with a follow-up of 12 months<sup>12</sup> reported an IBS incidence of 3.2% in COVID-19 patients.

Similar to the study by Klem et al,<sup>44</sup> we found that the most common IBS subtype reported after COVID-19 was IBS with diarrhoea, ranging from 34.7% in the study by Austhof et al<sup>39</sup> to 60% in the study by Ghoshal et al.<sup>14</sup> Unfortunately, we were unable to assess predictive factors for post-COVID-19 IBS incidence since only three studies<sup>12,14,41</sup> reported this association. However, all predictive factors reported had a biological plausibility,<sup>11</sup> including increased levels of anxiety and depression,<sup>41</sup> the severity of the acute COVID-19 infection,<sup>12,14</sup> the presence of gastrointestinal symptoms during the acute COVID-19 infection,<sup>14</sup> history of allergies and chronic PPI intake.<sup>12</sup>

To the best of our knowledge, this is the first meta-analysis aimed at assessing the pooled rate and the OR of IBS and FD after COVID-19. Our meta-analysis has several strengths, such as the comprehensive literature search which minimises the risk of missing studies, and the inclusion of a large cohort of patients from different countries allowing to generalise the validity of our results worldwide. Furthermore, all studies included had a fair or good quality according to the NIH scale. As additional strength of our analysis, we performed a meta-regression analysis for finding sources of heterogeneity. Finally, another strength of our meta-analysis is the subgroup analysis which allowed to perform additional evaluations after removing retrospective studies and those without the exclusion of patients with previous gastrointestinal disease, which may have potentially biased our results.

At the same time, this meta-analysis has some weaknesses. We included also retrospective studies, which were all Internet-based surveys, therefore suffering from several biases, that is, recall bias. Moreover, we considered studies reporting COVID-19 patients from different setting (e.g. hospitalised, outpatients, etc.) and different lengths of follow-up, thus with different degree of COVID-19 clinical course and different observation periods that may have influenced the pooled estimates of post-COVID-19 DGBI. Indeed, according to the study by Klem et al<sup>44</sup> and that by Marasco et al,<sup>12</sup> the severity of the acute viral infection was related to the risk of developing post-COVID-19 IBS. Nevertheless, we were unable to find associations between incidence of FD and IBS and various methodological and demographic features at meta-regression, probably due to an underpowered analysis due to type II error. Moreover, we were unable to analyse data regarding the correlation between post-COVID-19 FD and IBS incidence and SARS-CoV-2 viral variants and any vaccination performed. Finally, in our meta-analysis, it was not possible to consider other confounding factors affecting IBS incidence such as psychological and

other somatic co-morbidities, previous and in-hospital treatments, etc. Moreover, our data mainly report of hospitalised COVID-19 patients and should be interpreted in the light of the changing hospitalisation rates for COVID-19 over time.

In conclusion, our results provide evidence that patients with COVID-19 present a higher risk of developing IBS compared to non-infected subjects. Our data should be carefully considered by clinicians when managing patients with long COVID-19 symptoms to properly and timely recognise IBS occurrence. However, due to the high prevalence of COVID-19 at the global level, our data also support the increased burden to the healthcare system due to newly diagnosed post-COVID-19 IBS. Our data should be further explored in correlation to each SARS-CoV-2 variants and to the protective effect of anti-COVID-19 vaccines,<sup>49,50</sup> which may be associated to less severe COVID-19 and therefore to a reduced risk of long COVID-19.

#### AUTHOR CONTRIBUTIONS

GM and GB designed the systematic review and meta-analysis; GM, MM, CC, MRB performed the literature search, study selection and data extraction; GM performed statistical analyses; GM and MM drafted the paper; all authors critically reviewed the paper and approved the final version of the manuscript.

#### ACKNOWLEDGEMENTS

*Declaration of personal interests:* We thank Dr. Laura Chierico (Medical Librarian). Open Access Funding provided by Università degli Studi di Bologna within the CRUI-CARE Agreement.

#### FUNDING INFORMATION

The study was supported in part by the Italian Ministry of Education, University and Research and funds from the University of Bologna (RFO) to G.B. G.B. is a recipient of an educational grant from Fondazione del Monte di Bologna e Ravenna, and Fondazione Carisbo, Bologna, Italy. GB is a recipient of the European grant HORIZON 2020-SC1-BHC-2018-2020/H2020-SC1-2019-Two-Stage-RTD-DISCOVERIE PROJECT. M.R.B. is a recipient of a grant from the Italian Ministry of Health (Ricerca Finalizzata GR-2018-12367062). The funders had no role in study design, data collection and analysis, decision to publish or preparation of the article.

#### CONFLICT OF INTEREST STATEMENT

We declare no competing interests.

#### PERSONAL AND FUNDING INTERESTS

None.

#### ORCID

Giovanni Marasco  <https://orcid.org/0000-0001-7167-8773>

Marcello Maida  <https://orcid.org/0000-0002-4992-9289>

Cesare Cremon  <https://orcid.org/0000-0002-7777-2936>

Maria Raffaella Barbaro  <https://orcid.org/0000-0003-4438-554X>

Giovanni Barbara  <https://orcid.org/0000-0001-9745-0726>



## REFERENCES

- WHO Coronavirus (COVID-19) Dashboard | WHO Coronavirus (COVID-19) Dashboard With Vaccination Data. <https://covid19.who.int/> (Accessed Feb 26, 2022).
- Marasco G, Cremon C, Barbaro MR, Salvi D, Cacciari G, Kagramanova A, et al. Prevalence of gastrointestinal symptoms in severe acute respiratory syndrome coronavirus 2 infection: results of the prospective controlled multinational GI-COVID-19 study. *Am J Gastroenterol.* 2022;117:147–57.
- Marasco G, Nardone OM, Maida M, Boskoski I, Pastorelli L, Scaldaferrì F. Impact of COVID-19 outbreak on clinical practice and training of young gastroenterologists: a European survey. *Dig Liver Dis.* 2020;52:1396–402. <https://doi.org/10.1016/j.dld.2020.05.023>
- Maida M, Sferrazza S, Savarino E, Ricciardiello L, Repici A, Morisco F, et al. Impact of the COVID-19 pandemic on gastroenterology divisions in Italy: a national survey. *Dig Liver Dis.* 2020;52:808–15. <https://doi.org/10.1016/j.dld.2020.05.017>
- Crook H, Raza S, Nowell J, Young M, Edison P. Long covid – mechanisms, risk factors, and management. *BMJ.* 2021;374:n1648. <https://doi.org/10.1136/bmj.n1648>
- Groff D, Sun A, Ssentongo AE, Ba DM, Parsons N, Poudel GR, et al. Short-term and long-term rates of postacute sequelae of SARS-CoV-2 infection: a systematic review. *JAMA Netw Open.* 2021;4:e2128568. <https://doi.org/10.1001/jamanetworkopen.2021.28568>
- Nalbandian A, Sehgal K, Gupta A, Madhavan MV, McGroder C, Stevens JS, et al. Post-acute COVID-19 syndrome. *Nat Med.* 2021;27:601–15.
- Fernández-de-las-Peñas C, Rodríguez-Jiménez J, Cancela-Cilleruelo I, Guerrero-Peral A, Martín-Guerrero JD, García-Azorín D, et al. Post-COVID-19 symptoms 2 years after SARS-CoV-2 infection among hospitalized vs nonhospitalized patients. *JAMA Netw Open.* 2022;5:e2242106.
- Marasco G, Lenti MV, Cremon C, Barbaro MR, Stanghellini V, Di Sabatino A, et al. Implications of SARS-CoV-2 infection for neurogastroenterology. *Neurogastroenterol Motil.* 2021;33:e14104.
- Schmulson M, Ghoshal U, Barbara G. Managing the inevitable surge of post-COVID-19 functional gastrointestinal disorders. *Am J Gastroenterol.* 2020;116:4–7. <https://doi.org/10.14309/ajg.000000000001062>
- Barbara G, Grover M, Bercik P, Corsetti M, Ghoshal UC, Ohman L, et al. Rome foundation working team report on post-infection irritable bowel syndrome. *Gastroenterology.* 2019;156:46–58.e7.
- Marasco G, Cremon C, Barbaro MR, Cacciari G, Falangone F, Kagramanova A, et al. Post COVID-19 irritable bowel syndrome. *Gut.* 2023;72:484–92.
- Noviello D, Costantino A, Muscatello A, Bandera A, Consonni D, Vecchi M, et al. Functional gastrointestinal and somatoform symptoms five months after SARS-CoV-2 infection: a controlled cohort study. *Neurogastroenterol Motil.* 2022;34:e14187. <https://doi.org/10.1111/nmo.14187>
- Ghoshal UC, Ghoshal U, Rahman MM, Mathur A, Rai S, Akhter M, et al. Post-infection functional gastrointestinal disorders following coronavirus disease-19: a case-control study. *J Gastroenterol Hepatol.* 2022;37:489–98.
- Moher D, Liberati A, Tetzlaff J, Altman DG, PRISMA Group. Preferred reporting items for systematic reviews and meta-analyses: the PRISMA statement. *Ann Intern Med.* 2009;151:264–9.
- Huang C, Wang Y, Li X, Ren L, Zhao J, Hu Y, et al. Clinical features of patients infected with 2019 novel coronavirus in Wuhan, China. *Lancet.* 2020;395:497–506.
- Drossman DA. The functional gastrointestinal disorders and the Rome III process. *Gastroenterology.* 2006;130:1377–90.
- Lacy BE, Mearin F, Chang L, Chey WD, Lembo AJ, Simren M, et al. Bowel disorders. *Gastroenterology.* 2016;150:1393–1407.e5.
- Drossman DA, Tack J. Rome foundation clinical diagnostic criteria for disorders of gut-brain interaction. *Gastroenterology.* 2022;162:675–9.
- Coronavirus disease (COVID-19). <https://www.who.int/emergencies/diseases/novel-coronavirus-2019> (Accessed September 28, 2020).
- Study Quality Assessment Tools. NHLBI, NIH. <https://www.nhlbi.nih.gov/health-topics/study-quality-assessment-tools> (Accessed March 16, 2023).
- Higgins JPT, Thompson SG. Quantifying heterogeneity in a meta-analysis. *Stat Med.* 2002;21:1539–58.
- Thompson SG, Sharp SJ. Explaining heterogeneity in meta-analysis: a comparison of methods. *Stat Med.* 1999;18:2693–708.
- Higgins JPT, Thompson SG. Controlling the risk of spurious findings from meta-regression. *Stat Med.* 2004;23:1663–82.
- Manly BFJ, Navarro Alberto JA. Randomization, bootstrap and Monte Carlo methods in biology. New York: Chapman and Hall/CRC; 2018. <https://doi.org/10.1201/9781315273075>
- Rendon RF, Tellez FAF, Remes-Troche JM, Gomez-Castaños PC, Coss-Adame E, Gomez-Escudero O, et al. FrO15 factors related to new onset dyspepsia after covid 19 infection in Mexican population. *Gastroenterology.* 2021;160:S-191.
- Choi HG, Kang HS, Lim H, Kim JH, Kim JH, Cho SJ, et al. Changes in the incidence rates of gastrointestinal diseases due to the COVID-19 pandemic in South Korea: a long-term perspective. *J Pers Med.* 2022;12:1144. <https://doi.org/10.3390/JPM12071144>
- Cooney J, Appiahene P, Findlay R, al-Hillawi L, Rafique K, Laband W, et al. COVID-19 infection causing residual gastrointestinal symptoms – a single UK centre case series. *Clin Med.* 2022;22:181–3.
- Kim N, Kim J, Yang BR, Hahm BJ. Associations of unspecified pain, idiopathic pain and COVID-19 in South Korea: a nationwide cohort study. *Korean J Pain.* 2022;35:458–67.
- Vélez C, Paz M, Silvernale C, Stratton LW, Kuo B, Staller K, et al. Factors associated with chronic de novo post-coronavirus disease gastrointestinal disorders in a metropolitan US County. *Clin Gastroenterol Hepatol.* 2022;20:e1488–92.
- Farello G, Di Lucia A, Fioravanti B, Tambucci R, Stagi S, Gaudino R. Analysis of the impact of COVID-19 pandemic on functional gastrointestinal disorders among paediatric population. *Eur Rev Med Pharmacol Sci.* 2021;25:5836–42.
- Nakov R, Dimitrova-Yurukova D, Snegarova V, Nakov V, Fox M, Heinrich H. Increased prevalence of gastrointestinal symptoms and disorders of gut-brain interaction during the COVID-19 pandemic: an internet-based survey. *Neurogastroenterol Motil.* 2022;34:e14197. <https://doi.org/10.1111/NMO.14197>
- Oshima T, Siah KTH, Yoshimoto T, Miura K, Tomita T, Fukui H, et al. Impacts of the COVID-19 pandemic on functional dyspepsia and irritable bowel syndrome: a population-based survey. *J Gastroenterol Hepatol.* 2021;36:1820–7.
- Stepan MD, Cioboata R, Vintilescu ŞB, Vasile CM, Osman A, Ciolofan MS, et al. Pediatric functional abdominal pain disorders following COVID-19. *Life (Basel, Switzerland).* 2022;12:509. <https://doi.org/10.3390/LIFE12040509>
- Barrett-Englert M, Rao A, Chey S, Sutton A, Taylor E, Chey WD. Sa1054: COVID-19 exacerbates existing digestive disorders and triggers new digestive symptoms and diagnoses: results from an international patient survey. *Gastroenterology.* 2022;162:S-288-S-289.
- Blackett JW, Wainberg M, Elkind MSV, Freedberg DE. Potential long coronavirus disease 2019 gastrointestinal symptoms 6 months after coronavirus infection are associated with mental health symptoms. *Gastroenterology.* 2022;162:648–650.e2.
- Ebrahim Nakhli R, Shanker A, Sarosiek I, Boschman J, Espino K, Sigaroodi S, et al. Gastrointestinal symptoms and the severity of COVID-19: disorders of gut-brain interaction are an outcome. *Neurogastroenterol Motil.* 2022;34:e14368. <https://doi.org/10.1111/NMO.14368>

38. Blackett JW, Li J, Jodorkovsky D, Freedberg DE. Prevalence and risk factors for gastrointestinal symptoms after recovery from COVID-19. *Neurogastroenterol Motil.* 2022;34:e14251. <https://doi.org/10.1111/NMO.14251>
39. Austhof E, Bell ML, Riddle MS, Catalfamo C, McFadden C, Cooper K, et al. Persisting gastrointestinal symptoms and post-infectious irritable bowel syndrome following SARS-CoV-2 infection: results from the Arizona CoVHORT. *Epidemiol Infect.* 2022;150:e136. <https://doi.org/10.1017/S0950268822001200>
40. Golla R, Vuyyuru S, Kante B, Kumar P, Thomas DM, Makharia G, et al. Long-term gastrointestinal sequelae following COVID-19: a prospective follow-up cohort study. *Clin Gastroenterol Hepatol.* 2022;21(3):789–96. <https://doi.org/10.1016/j.cgh.2022.10.015>
41. Farsi F, Zonooz SR, Ebrahimi Z, Jebrailli H, Morvaridi M, Azimi T, et al. The incidence of post-infectious irritable bowel syndrome, anxiety, and depression in Iranian patients with coronavirus disease 2019 pandemic: a Cross-sectional study. *Turk J Gastroenterol.* 2022;33:1033–42. <https://doi.org/10.5152/TJG.2022.21651>
42. Nazarewska A, Lewandowski K, Kaniewska M, Rosołowski M, Marlicz W, Rydzewska G. Irritable bowel syndrome following COVID-19: underestimated consequence of infection with SARS-CoV-2. *Polish Arch Intern Med.* 2022;132(11):16323. <https://doi.org/10.20452/PAMW.16323>
43. Choudhury A, Tariq R, Jena A, Vesely EK, Singh S, Khanna S, et al. Gastrointestinal manifestations of long COVID: a systematic review and meta-analysis. *Therap Adv Gastroenterol.* 2022;15:17562848221118403. <https://doi.org/10.1177/17562848221118403>
44. Klem F, Wadhwa A, Prokop LJ, Sundt WJ, Farrugia G, Camilleri M, et al. Prevalence, risk factors, and outcomes of irritable bowel syndrome after infectious enteritis: a systematic review and meta-analysis. *Gastroenterology.* 2017;152:1042–1054.e1.
45. Marasco G, Maida M, Morreale GC, Licata M, Renzulli M, Cremon C, et al. Gastrointestinal bleeding in COVID-19 patients: a systematic review with meta-analysis. *Can J Gastroenterol Hepatol.* 2021;2021:2534975. <https://doi.org/10.1155/2021/2534975>
46. Liu Q, Mak JWY, Su Q, Yeoh YK, Lui GCY, Ng SSS, et al. Gut microbiota dynamics in a prospective cohort of patients with post-acute COVID-19 syndrome. *Gut.* 2022;71:544–52.
47. Phetsouphanh C, Darley DR, Wilson DB, et al. Immunological dysfunction persists for 8 months following initial mild-to-moderate SARS-CoV-2 infection. *Nat Immunol.* 2022;23:210–6.
48. Sun J, Xiao J, Sun R, Tang X, Liang C, Lin H, et al. Prolonged persistence of SARS-CoV-2 RNA in body fluids. *Emerg Infect Dis.* 2020;26:1834–8.
49. Jackson LA, Anderson EJ, Roupheal NG, Roberts PC, Makhene M, Coler RN, et al. An mRNA vaccine against SARS-CoV-2 – preliminary report. *N Engl J Med.* 2020;383:1920–31.
50. Polack FP, Thomas SJ, Kitchin N, Absalon J, Gurtman A, Lockhart S, et al. Safety and efficacy of the BNT162b2 mRNA Covid-19 vaccine. *N Engl J Med.* 2020;383:2603–15.

#### SUPPORTING INFORMATION

Additional supporting information will be found online in the Supporting Information section.

**How to cite this article:** Marasco G, Maida M, Cremon C, Barbaro MR, Stanghellini V, Barbara G. Meta-analysis: Post-COVID-19 functional dyspepsia and irritable bowel syndrome. *Aliment Pharmacol Ther.* 2023;58:6–15. <https://doi.org/10.1111/apt.17513>