



Supplementary material: From Bitter to Sweet: a preliminary study towards a patient-friendly Praziquantel dosage form

Document complémentaire : De l'amer au sucré : une étude préliminaire sur une forme médicamenteuse du Praziquantel adaptée aux patients

Debora Zanolla^{® #, a}, Serena Bertoni^{® #, b}, Nadia Passerini^{® #, b}, Beatrice Albertini^{® #, b},
Guglielmo Zingone^{® #, a} and Beatrice Perissutti^{® *, #, a}

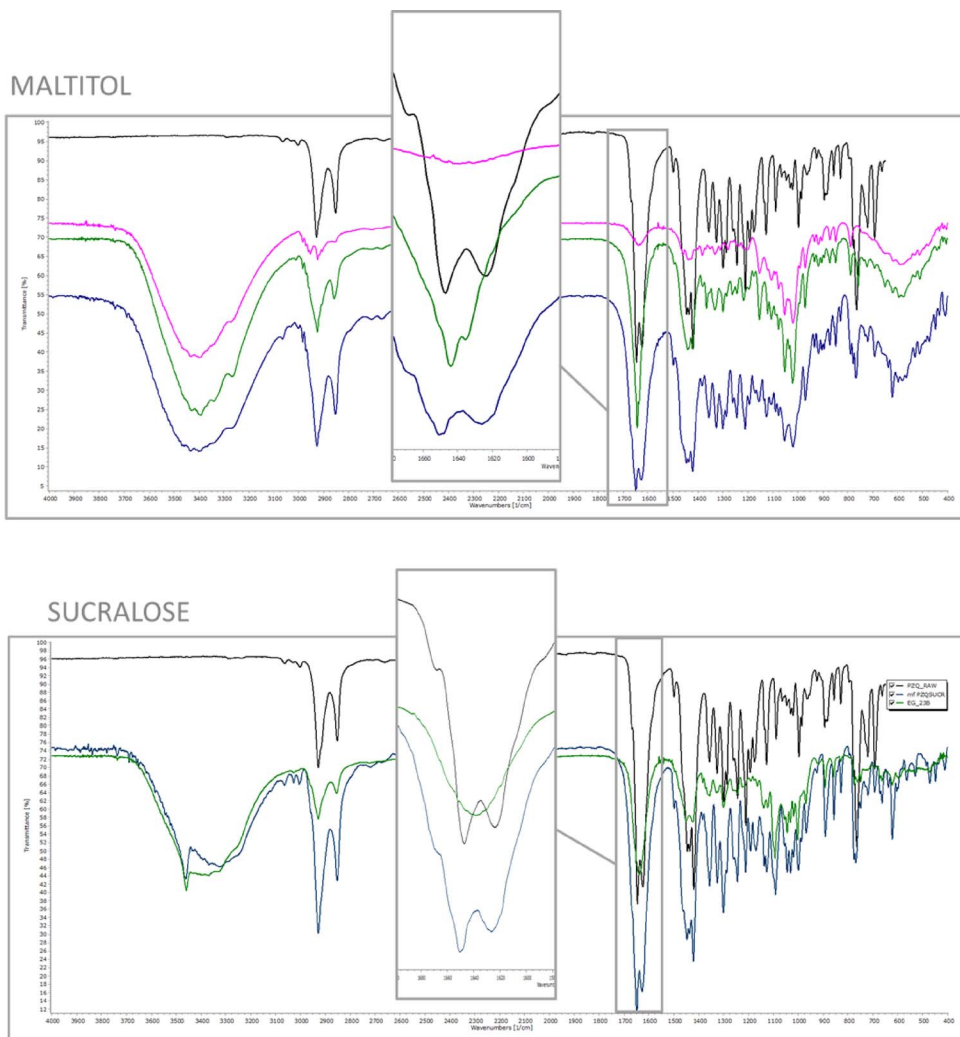
^a Department of Chemical and Pharmaceutical Sciences, University of Trieste, Ple
Europa 1, 34127 Trieste, Italy

^b Department of Pharmacy and BioTechnology, University of Bologna, Via S. Donato
19/2, 40127 Bologna, Italy

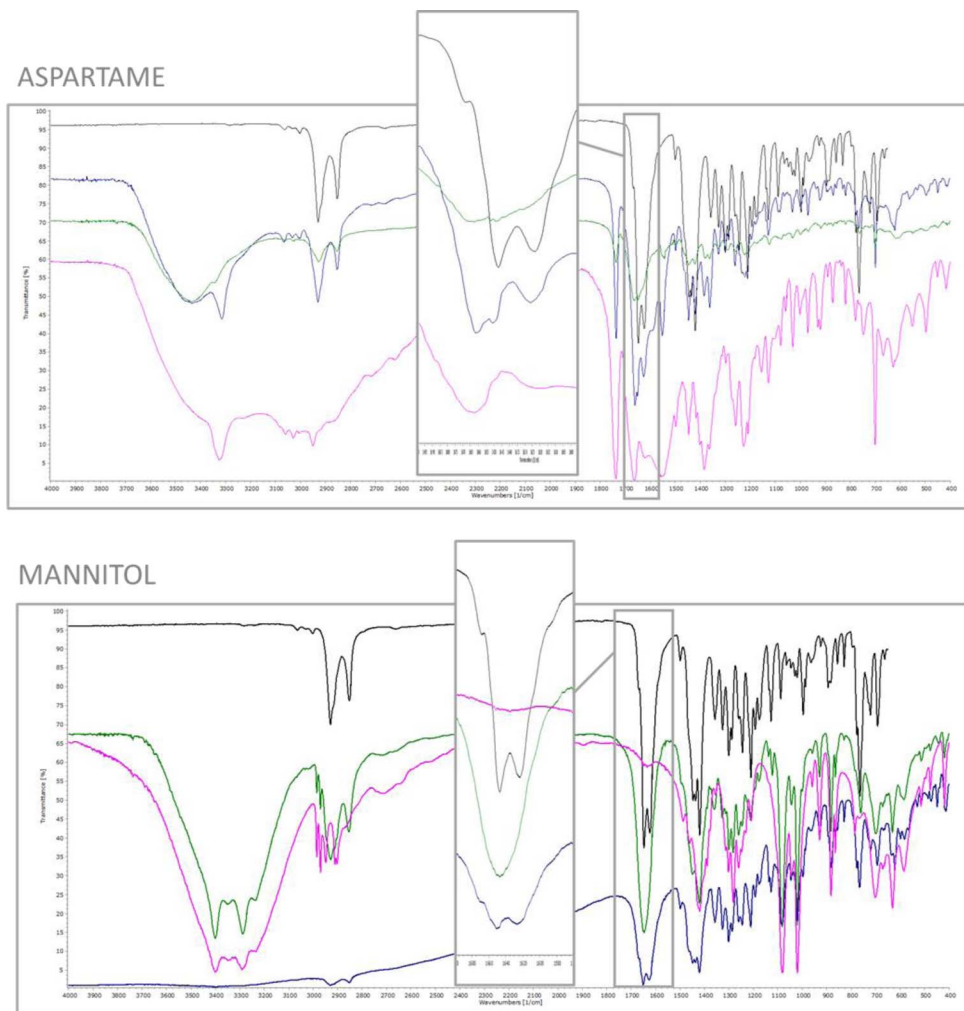
E-mails: debora.zanolla@gmail.com (D. Zanolla), serena.bertoni4@unibo.it
(S. Bertoni), nadia.passerini@unibo.it (N. Passerini), beatrice.albertini@unibo.it
(B. Albertini), zingone@units.it (G. Zingone), bperissutti@units.it (B. Perissutti)

* Corresponding author.

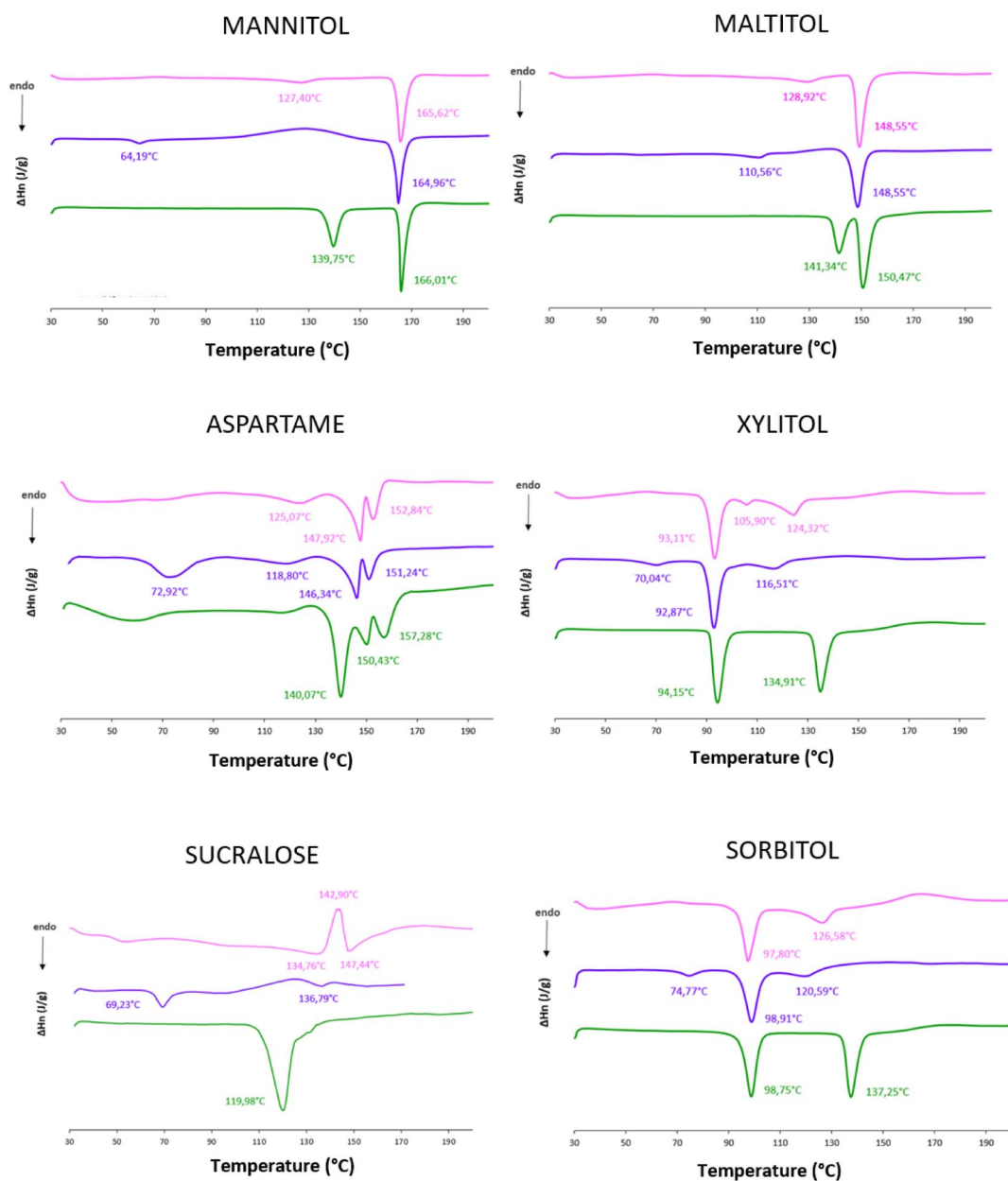
Contributed equally.



Supplementary Figure S1. Continued on next page.



Supplementary Figure S1 (cont.). FT-IR spectra of coground system (green), corresponding physical mixture (blue), sweetener (purple) and PZQ Form A (black). Frame highlights diagnostic region.



Supplementary Figure 2. Comparison of DSC curves over time: fresh PZQ coground (pink), coground after 1 year of ageing (purple), corresponding physical mixtures (green).