

# Supplementary Materials: Impact of Intercurrent Introduction of Steroids on Clinical Outcomes in Advanced Non-Small-Cell Lung Cancer (NSCLC) Patients under Immune-Checkpoint Inhibitors (ICI)

Andrea De Giglio, Laura Mezquita, Edouard Auclin, Félix Blanc-Durand, Mariona Riudavets, Caroline Caramella, Gala Martinez, Jose Carlos Benitez, Patricia Martín-Romano, Lamiae El-Amarti, Lizza Hendriks, Roberto Ferrara, Charles Naltet, Pernelle Lavaud, Anas Gazzah, Julien Adam, David Planchard, Nathalie Chaput and Benjamin Besse

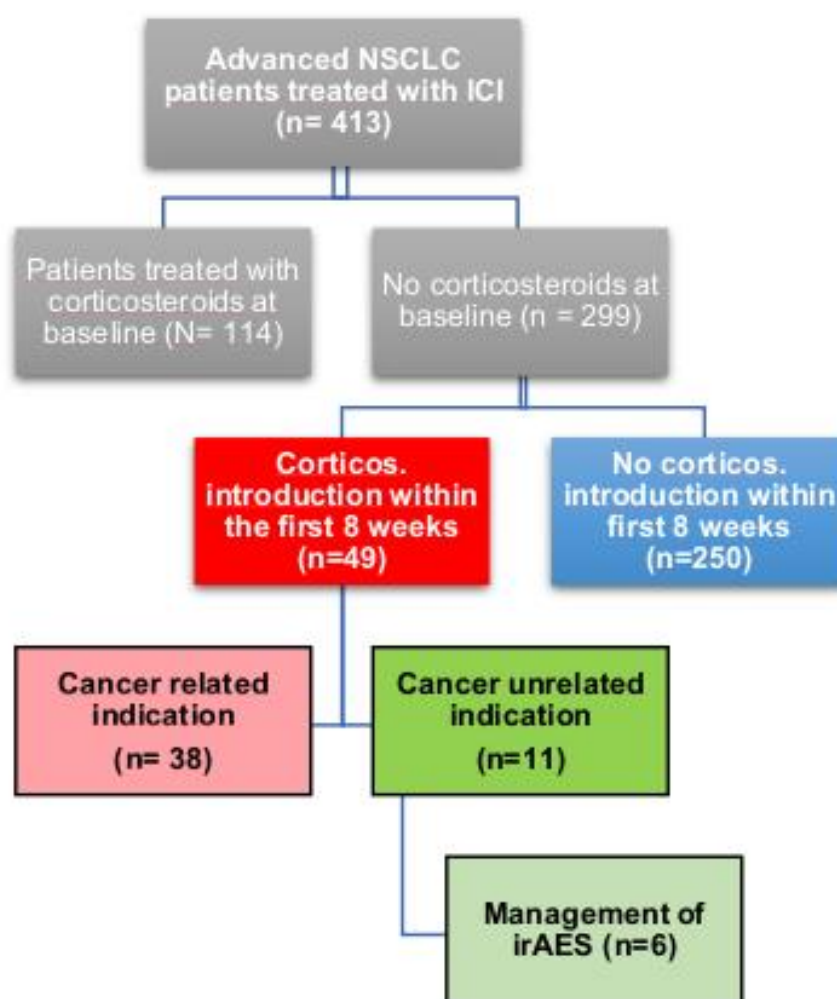
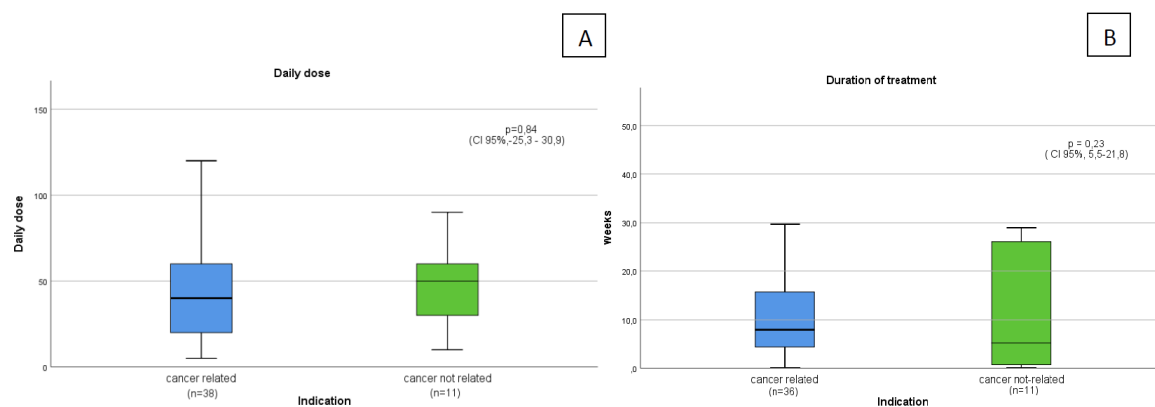
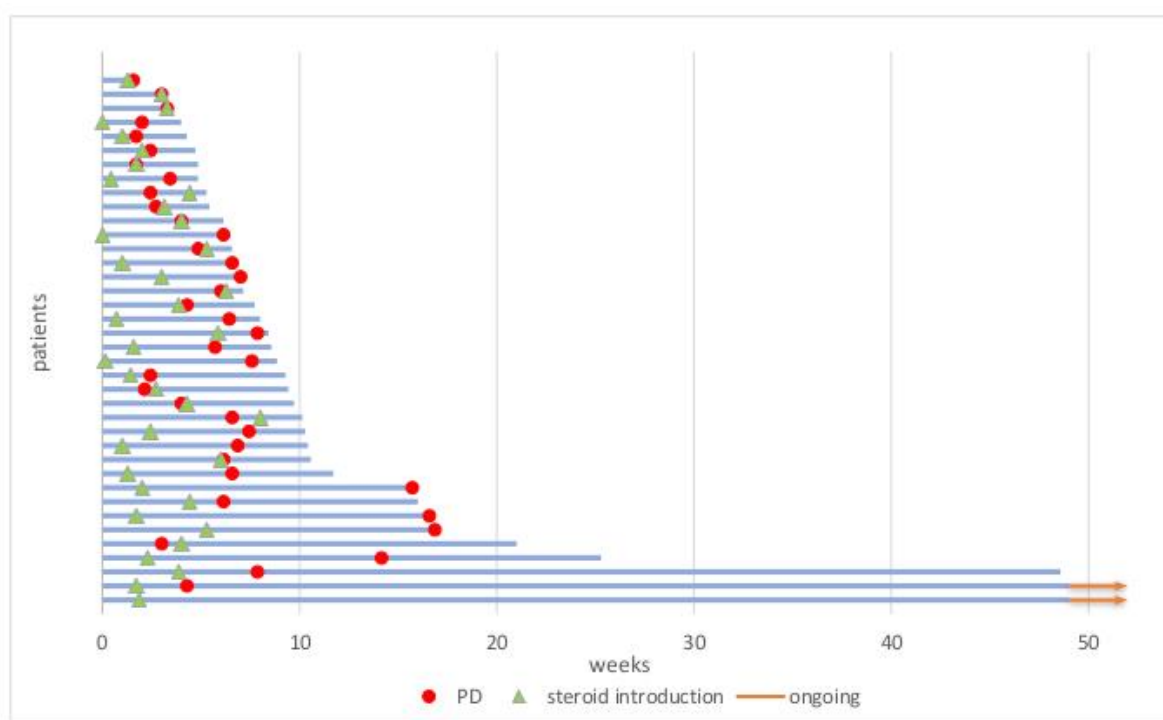


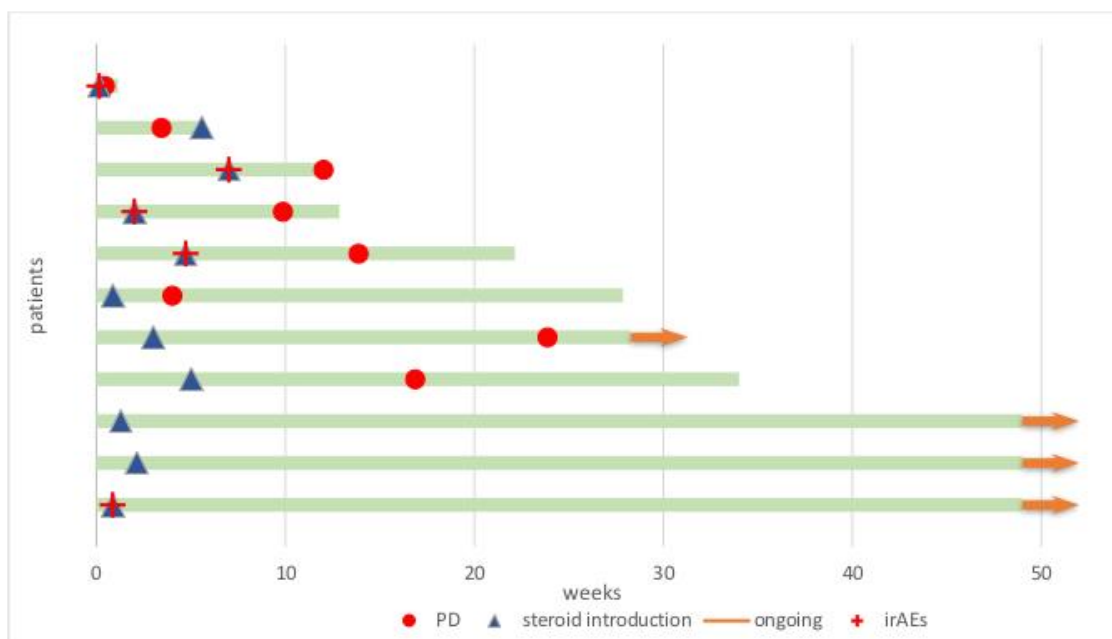
Figure S1: Flowchart of the study.



**Figure S2.** Box and whiskers plot describing daily dose (A) and duration of steroid treatment (B) per indication.



**Figure S3:** Swimmers plot detailing progression survival (PFS) and overall survival (OS) after 1 year of follow-up of patients receiving intercurrent steroids for cancer-related indications.



**Figure S4:** Swimmers plot detailing progression survival (PFS) and overall survival (OS) after 1 year of follow-up of patients receiving intercurrent steroids for cancer-unrelated indications.

**Table S1:** Cancer-related indications for corticosteroids administrations are listed with cumulative dosages.

<b>Cancer-related indication</b>	<b>Number of patients</b>	<b>%</b>
<b>dyspnea cancer related</b>	19	50
<b>brain metastasis</b>	6	15.8
<b>tumor pain</b>	3	7.9
<b>sup. vena cava syndrome</b>	3	7.9
<b>Fatigue</b>	2	5.3
<b>Spinal compression</b>	2	5.3
<b>malignant pericarditis</b>	1	2.6
<b>Emesis/cholestasis/dysphagy</b>	1	2.6
<b>oncologic fever</b>	1	2.6
<b>Overall</b>	38	100

Cancer-related indications for steroids administrations are listed with cumulative dosages.

Table S2: Non-cancer-related indications.

Non cancer-related indication	Number of patients	%
Pneumonia/COPD exac.	3	27.2
Pneumonitis ir	3	27.2
Arthritis ir	2	18.3
Liver failure ir	1	9.1
Infusion reaction	1	9.1
Premedication for cementoplasty	1	9.1
<b>Overall</b>	<b>11</b>	<b>100</b>

Non-cancer-related indications for steroids administrations are listed with cumulative dosages. Abbreviation: COPD, chronic obstructive pulmonary disease.

Table S3. Baseline Characteristics of study population according to antibiotic prescription.

		Whole sample (N=413)	antibiotic no (N=265)	antibiotic yes (N=148)	p-value
<b>Steroid group</b>	baseline steroids	114 (28%)	62 (23%)	52 (35%)	0.002
	intercurrent steroids	49 (12%)	26 (10%)	23 (16%)	
<b>Reason of intercurrent prescription</b>	no steroids	250 (60%)	177 (67%)	73 (49%)	0.039
	non-cancer related	11 (4%)	5 (3%)	6 (6%)	
	cancer related	38 (13%)	21 (10%)	17 (18%)	
<b>ECOG PS</b>	NA	114	62	52	<0.001
	0-1	313 (77%)	221 (84%)	92 (64%)	
	≥ 2	95 (23%)	43 (16%)	52 (36%)	
	NA	5	1	4	

Abbreviation: ECOG PS, Eastern Cooperative Oncology Group performance status

