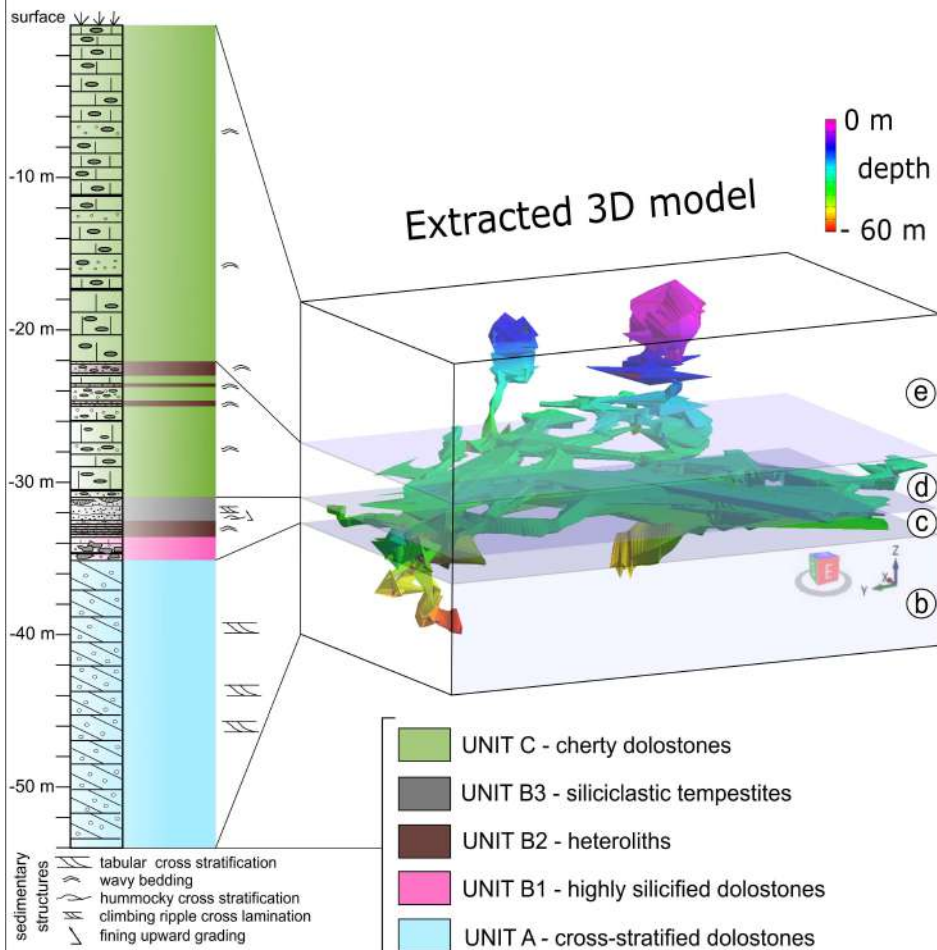


A LITHOSTRATIGRAPHIC LOG

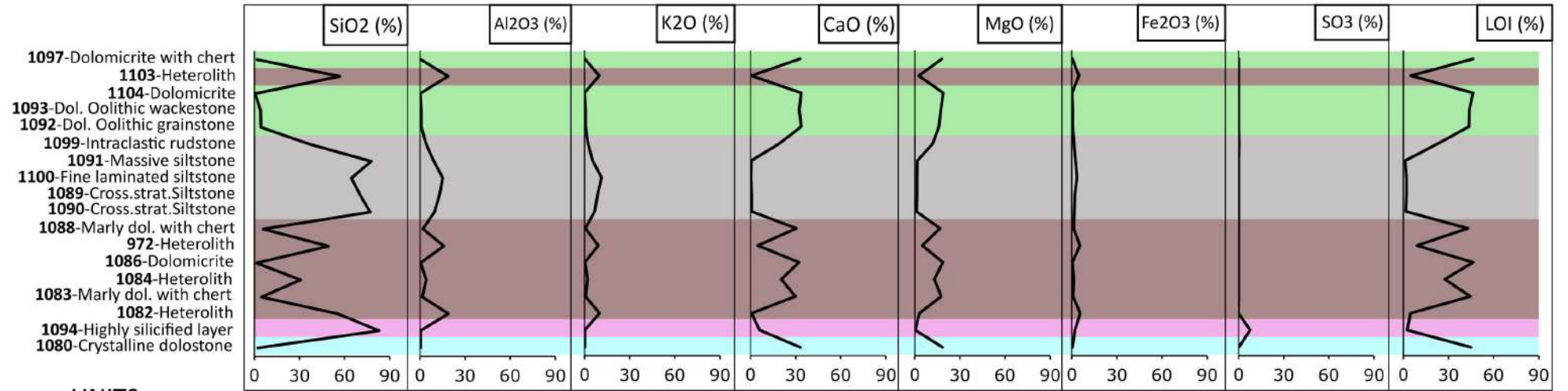


LEGEND

- dolostone (recrystallized ooidal grainstone with terrigenous detrital grains)
- dolomicrite (mudstone texture)
- dolostone (ooidal wackestone/grainstone)
- shales/siltstones and marly dolostones with detrital clasts (heterolithic texture)
- shales and siltstones (heterolithic texture)
- marly dolostones and mudstones
- tempestites (coarse to fine siltstones)
- hybrid tempestites (intraclastic rudstones and sandstones)
- chert nodules
- cherty layers



Major elements



UNITS



Minor elements

