

Alma Mater Studiorum Università di Bologna
Archivio istituzionale della ricerca

Intravenous supplementation type and volume are associated with 1-year outcome and major complications in patients with chronic intestinal failure

This is the final peer-reviewed author's accepted manuscript (postprint) of the following publication:

Published Version:

Pironi, L., Steiger, E., Joly, F., Wanten, G.J.A., Chambrier, C., Aimasso, U., et al. (2020). Intravenous supplementation type and volume are associated with 1-year outcome and major complications in patients with chronic intestinal failure. *GUT*, 69(10), 1787-1795 [10.1136/gutjnl-2018-318172].

Availability:

This version is available at: <https://hdl.handle.net/11585/785381> since: 2020-12-23

Published:

DOI: <http://doi.org/10.1136/gutjnl-2018-318172>

Terms of use:

Some rights reserved. The terms and conditions for the reuse of this version of the manuscript are specified in the publishing policy. For all terms of use and more information see the publisher's website.

This item was downloaded from IRIS Università di Bologna (<https://cris.unibo.it/>).
When citing, please refer to the published version.

(Article begins on next page)

This is the accepted peer reviewed manuscript of:

Pironi L, Steiger E, Joly F, Wanten GJA, Chambrier C, Aimasso U, Sasdelli AS, Szczepanek K, Jukes A, Theilla M, Kunecki M, Daniels J, Serlie MJ, Cooper SC, Poullenot F, Rasmussen HH, Compher CW, Crivelli A, Hughes SJ, Santarpia L, Guglielmi FW, Rotovnik Kozjek N, Ellegard L, Schneider SM, Matras P, Forbes A, Wyer N, Zmarzly A, Taus M, O'Callaghan M, Osland E, Thibault R, Cuerda C, Jones L, Chapman B, Sahin P, Virgili NM, Lee ADW, Orlandoni P, Matysiak K, Di Caro S, Doitchinova-Simeonova M, Masconale L, Spaggiari C, Garde C, Serralde-Zúñiga AE, Oliveira G, Krznaric Z, Petrina Jáuregui E, Zugasti Murillo A, Suárez-Llanos JP, Nardi E, Van Gossum A, Lal S.

Intravenous supplementation type and volume are associated with 1-year outcome and major complications in patients with chronic intestinal failure.

Gut. 2020 Oct;69(10):1787-1795.

The final published version is available online at: <https://doi.org/10.1136/gutjnl-2018-318172>

Rights / License:

The terms and conditions for the reuse of this version of the manuscript are specified in the publishing policy. For all terms of use and more information see the publisher's website.

This item was downloaded from IRIS Università di Bologna (<https://cris.unibo.it/>)

When citing, please refer to the published version.

1
2 1 **The intravenous supplementation type and volume is associated with one-year outcome and the**
3
4 2 **major complications in patients with chronic intestinal failure**
5
6
7 3
8
9 4 Loris Pironi, Ezra Steiger, Francisca Joly, Geert Wanten, Cecile Chambrier, Umberto Aimasso, Anna Simona
10
11 5 Sasdelli, Kinga Szczepanek, Amelia Jukes, Miriam Theilla, Marek Kunecki, Joanne Daniels, Mireille Serlie,
12
13 6 Sheldon C. Cooper, Florian Poullenot, Henrik H. Rasmussen, Charlene Compher, Adriana Crivelli, Sarah-Jane
14
15 7 Hughes, Lidia Santarpia, Francesco W. Guglielmi, Nada Rotovnik Kozjek, Lars Ellegard, Stéphane M.
16
17 8 Schneider, Przemysław Matras , Alastair Forbes, Nicola Wyer, Anna Zmarzly, Marina Taus, Margie
18
19 9 O'Callaghan, Emma Osland, Ronan Thibault, Cristina Cuerda, Lynn Jones, Brooke Chapman, Peter Sahin,
20
21 10 Nuria M. Virgili, Andre Dong Won Lee, Paolo Orlandoni, Konrad Matysiak, Simona Di Caro, Maryana
22
23 11 Doitchinova-Simeonova, Luisa Masconale, Corrado Spaggiari, Carmen Garde, Aurora E. Serralde-Zúñiga,
24
25 12 Gabriel Oliveira, Zeljko Krznaric, Estrella Petrina Jáuregui, Ana Zugasti Murillo, José P. Suárez-Llanos, Elena
26
27 13 Nardi, André Van Gossum and Simon Lal.
28
29 14 The Home Artificial Nutrition and Chronic Intestinal Failure special interest group of the European Society
30
31 15 for Clinical Nutrition and Metabolism (ESPEN)
32
33 16
34
35 17 Corresponding author
36
37 18 Loris Pironi
38
39 19 Center for Chronic Intestinal Failure
40
41 20 Department of Digestive System
42
43 21 St. Orsola Hospital, University of Bologna
44
45 22 Via Massarenti, 9 - 40138 Bologna, Italy
46
47 23 Tel: +39 - 051 - 6363073
48
49 24 Fax: +39 - 051 -6364193
50
51 25 Email: loris.pironi@unibo.it
52
53 26 Word count: 3883
54
55
56
57
58
59
60

Loris Pironi 1, Ezra Steiger 2, Francisca Joly 3, Geert J A Wanten 4, Cecile Chambrier 5, Umberto Aimasso 6, Anna Simona Sasdelli 1, Kinga Szczepanek 7, Amelia Jukes 8, Miriam Theilla 9, Marek Kunecki 10, Joanne Daniels 11, Mireille J Serlie 12, Sheldon C Cooper 13, Florian Poullenot 14, Henrik Højgaard Rasmussen 15, Charlene W Compher 16, Adriana Crivelli 17, Sarah-Jane Hughes 18, Lidia Santarpia 19, Francesco William Guglielmi 20, Nada Rotovnik Kozjek 21, Lars Ellegard 22, Stéphane M Schneider 23, Przemysław Matras 24, Alastair Forbes 25, Nicola Wyr 26, Anna Zmarzly 27, Marina Taus 28, Margie O'Callaghan 29, Emma Osland 30, Ronan Thibault 31, Cristina Cuerda 32, Lynn Jones 33, Brooke Chapman 34, Peter Sahin 35, Núría M Virgili 36, Andre Dong Won Lee 37, Paolo Orlandoni 38, Konrad Matysiak 39, Simona Di Caro 40, Maryana Doitchinova-Simeonova 41, Luisa Masconale 42, Corrado Spaggiari 43, Carmen Garde 44, Aurora E Serralde-Zúñiga 45, Gabriel Oliveira 46, Zeljko Krznaric 47, Estrella Petrina Jáuregui 48, Ana Zugasti Murillo 49, José P Suárez-Llanos 50, Elena Nardi 51, André Van Gossum 51, Simon Lal 52

1. *Medical and Surgical Sciences, University of Bologna, Bologna, Italy*
2. *Digestive Disease and Surgery Institute, Cleveland Clinic, Cleveland, Ohio, USA*
3. *Service de Gastroentérologie et d'Assistance nutritive, Hôpital Beaujon, Assistance Publique - Hôpitaux de Paris, University of Paris, Clichy, France*
4. *Department of Gastroenterology and Hepatology, Radboud University Medical Center, Nijmegen, The Netherlands*
5. *Centre Hospitalier Universitaire de Lyon, Lyon, Rhône-Alpes, France*
6. *Azienda Ospedaliero Universitaria Città della Salute e della Scienza di Torino, Torino, Piemonte, Italy*
7. *Stanley Dudrick's Memorial Hospital, Skawina, Poland*
8. *University Hospital of Wales, Cardiff, Cardiff, UK*
9. *Nursing Department, Steyer School of Health Professions, Sackler School of Medicine, Tel Aviv, Israel*
10. *Clinical Nutrition Department, M Pirogow Hospital, Lodz, Poland*
11. *Nottingham University Hospital NHS Trust, Nottingham, UK*
12. *Endocrinology and Metabolism, Academic Medical Center, Amsterdam, The Netherlands*
13. *University Hospitals Birmingham NHS Foundation Trust, Birmingham, Birmingham, UK*
14. *Hôpital Haut-Lévêque, Service d'hépatogastroentérologie, CHU Bordeaux, Pessac, France*
15. *Center for Nutrition and Bowel Disease, Department of Medical Gastroenterology, Aalborg University Hospital, Aalborg, Denmark*
16. *School of Nursing, University of Pennsylvania, Philadelphia, Pennsylvania, USA*
17. *Fundacion Favaloro Hospital Universitario, Buenos Aires, Federal District, Argentina*
18. *Belfast Health and Social Care Trust, Belfast, Belfast, UK*
19. *Department of Clinical Medicine and Surgery, Università degli Studi di Napoli Federico II, Napoli, Campania, Italy*
20. *Gastroenterology and Artificial Nutrition, Hospital Mons. Dimiccoli, Barletta, Trani, Italy*
21. *Institute of Oncology, Ljubljana, Slovenia*
22. *Sahlgrenska Universitetssjukhuset, Goteborg, Sweden*
23. *Centre Hospitalier Universitaire de Nice, Nice, Provence-Alpes-Côte d'Azur, France*
24. *Uniwersytet Medyczny w Lublinie, Lublin, Lubelskie, Poland*

25. *Faculty of Medicine and Health Sciences, University of East Anglia, Norwich, Norfolk, UK*
26. *University Hospital Coventry, Coventry, Coventry, UK*
27. *J Gromkowski City Hospital, Wroclaw, Poland*
28. *Azienda Ospedaliero Universitaria Ospedali Riuniti di Ancona Umberto I G M Lancisi G Salesi, Ancona, Marche, Italy*
29. *Flinders Medical Centre, Bedford Park, Adelaide, Australia*
30. *Royal Brisbane and Women's Hospital, Herston, Brisbane, Australia*
31. *Centre de référence Maladies Rares Digestives, Unité de Nutrition, CHU Rennes, INRAE, INSERM, Universite de Rennes, Nutrition Metabolisms and Cancer institute, NuMeCan, Rennes, Bretagne, France*
32. *Hospital General Universitario Gregorio Marañon, Madrid, Madrid, Spain*
33. *Royal Prince Alfred Hospital, Camperdown, New South Wales, Australia*
34. *Nutrition and Dietetics, Austin Health, Heidelberg, Victoria, Australia*
35. *St Imre Hospital, Budapest, Hungary*
36. *Unitat de Nutrició i Dietètica, Hospital Universitari Bellvitge, L'Hospitalet Llobregat, Barcelona, Spain*
37. *Hospital das Clinicas da Faculdade de Medicina da Universidade de São Paulo, São Paulo, Brazil*
38. *Clinical Nutrition, IRCCS-INRCA, Ancona, Marche, Italy*
39. *Centre for Intestinal Failure, Uniwersytet Medyczny imienia Karola Marcinkowskiego w Poznaniu, Poznan, Poland*
40. *Gastroenterology, UCLH, London, UK*
41. *Bulgarian Executive Agency of Transplantation, Sofia, Bulgaria*
42. *Unita' Locale Socio-Sanitaria N° 22, Bussolengo, Verona, Italy*
43. *Azienda Unita Sanitaria Locale di Parma, Parma, Emilia-Romagna, Italy*
44. *Hospital Universitario de Donostia, San Sebastian, País Vasco, Spain*
45. *Instituto Nacional de Ciencias Medicas y Nutricion Salvador Zubiran, Tlalpan, DF, Mexico*
46. *Hospital Regional Universitario de Málaga, Universidad de Málaga, Málaga, Spain*
47. *University Hospital Centre Zagreb, Zagreb, Croatia*
48. *Complejo Hospitalario de Navarra, Pamplona, Spain*
49. *Hospital Virgen del Camino, Pamplona, Navarra, Spain*
50. *Hospital Universitario Nuestra Señora de la Candelaria, Santa Cruz de Tenerife, Canarias, Spain*
51. *Department of Gastroenterology, Hepatopancreatology and Digestive Oncology, Erasme Hospital, Université Libre de Bruxelles, Brussels, Belgium*
52. *Gastroenterology and Intestinal Failure Unit, Salford Royal Foundation Trust, University of Manchester, Manchester, UK*

What is already known on this subject?

- Previous studies have demonstrated that several clinical risk factors are associated with outcome and the risk of parenteral nutrition/intestinal failure-related major complications in patients on long-term home parenteral nutrition. However, no objective indicator has yet been identified to categorize the severity of chronic intestinal failure.

What are the new findings?

- The one-year odds of major complications of home parenteral nutrition/intestinal failure (liver disease and catheter-related blood stream infection) and weaning from home parenteral nutrition are independently associated with the type and volume of the intravenous supplementation required.
- The one-year odds of death is non-significantly associated with the type of intravenous supplementation required; future study is required to determine if the latter significantly impacts on the longer term risk of death in this patient cohort.

How might it impact on clinical practice in the foreseeable future?

- The type and the volume of the intravenous supplementation could be indicators to categorize the severity of chronic intestinal failure in clinical and research settings.

1
2
3
4
5
6
7
8
9
10
11
12
13
14
15
16
17
18
19
20
21
22
23
24
25
26
27
28
29
30
31
32
33
34
35
36
37
38
39
40
41
42
43
44
45
46
47
48
49
50
51
52
53
54
55
56
57
58
59
60

Abstract

Background and aim

No marker to categorize the severity of chronic intestinal failure (CIF) has yet been developed. A one-year international survey was carried out to investigate whether the European Society for Clinical Nutrition and Metabolism (ESPEN) clinical classification of CIF, based on the type and the volume of the intravenous supplementation (IVS) could be an indicator of CIF severity.

Methods

At baseline, participating home parenteral nutrition (HPN)-centers enrolled all adults with ongoing CIF due to non-malignant disease; demographic data, body mass index, CIF mechanism, underlying disease, HPN duration and IVS category were recorded for each patient. The type of IVS was classified as fluid and electrolyte alone (FE) or parenteral nutrition admixture (PN). The mean daily IVS volume, calculated on weekly basis, was categorized as: <1, 1-2, 2-3, >3 L/day. The severity of CIF was determined by patient outcome (still on HPN, weaned from HPN, deceased) and the occurrence of major HPN/CIF-related complications: intestinal failure associated liver disease (IFALD), catheter-related venous thrombosis (CVC-VT) and catheter-related bloodstream infection (CRBSI).

Results

Fifty-one HPN-centers included 2194 patients. The analysis showed that both IVS type and volume were independently associated with the odds of weaning from HPN (significantly higher for PN <1 L/day than for FE and all the PN >1 L/day), patient's death (lower for FE, p=0.079), presence of IFALD-cholestasis/liver failure and occurrence of CRBSI (significantly higher for PN 2-3 and PN >3 L/day).

Conclusions

The type and the volume of the IVS required by patients with CIF could be indicators to categorize the severity of CIF in both clinical practice and research protocols.

66 Introduction

67 Intestinal failure (IF) is defined as the reduction of gut function below the minimum necessary for the
68 absorption of macronutrients and/or water and electrolytes, such that intravenous supplementation (IVS) is
69 required to maintain health and/or growth, [1]. Chronic intestinal failure (CIF) is a long-lasting condition
70 that may be reversible or irreversible. Patients with CIF are metabolically stable and receive IVS at home
71 (home parenteral nutrition, HPN) for months, years or lifelong, [2]. Single or multicenter, mostly
72 retrospective, surveys have described risk factors associated with the patient's outcome, such as survival
73 and reversibility of CIF, and with the risk of HPN/IF-related major complications, [3-5]. However, no simple
74 indicator, such as creatinine for kidney disease and SaO_2 for respiratory disease, has yet been identified to
75 categorize the severity of CIF. Such an indicator would be a useful criterion for both clinical practice and
76 research protocols.

77 The European Society for Clinical Nutrition and Metabolism (ESPEN) devised a clinical classification of
78 CIF, to facilitate communication among professionals through an objective categorization of the patients.
79 This was based on patients' requirements for energy and volume of IVS and originally comprised 16
80 categories, [1]. An international cross-sectional survey was carried out to investigate the applicability of this
81 classification and to evaluate factors associated with the IVS requirements of individual patients, [6]. In
82 adult patients with CIF due to non-malignant disease (benign-CIF), the loss of intestinal function appeared
83 more comprehensively represented by IVS volume requirement than by energy requirement. The results
84 enabled the derivation of a new simplified 8-category classification of CIF, based on two types of IVS, either
85 fluid and electrolyte alone (FE) or parenteral nutrition admixture containing energy (PN), and four
86 categories of volume, [6].

87 In order to determine whether ESPEN clinical classification categories could be used as indicators of
88 the severity of CIF, a prospective, multi-center international study was carried out to investigate their
89 association with the patient's outcome and the major complications related to HPN/IF. The results of one-
90 year follow up are reported.

1
2 92 **Material and methods**

3
4 93 *Study design*

5
6 94 This was an international survey involving the retrospective collection of data prospectively recorded
7
8
9 95 during a one-year follow-up period. The severity of CIF was based on both patient outcome and major
10
11 96 complications related to HPN/IF. The patient’s outcome was categorized as still on HPN, weaned from HPN
12
13 97 or deceased. The HPN/IF-related complications were described as the occurrence of intestinal failure
14
15 98 associated liver disease (IFALD-cholestasis or liver failure), central venous catheter associated vein
16
17 99 thrombosis (CVC-VT) or central venous catheter related bloodstream infection (CRBSI) at one-year follow-
18
19
20 100 up, [2].

21
22 101 *Baseline HPN center enrollment and patient inclusion*

23
24 102 The baseline data collection was performed on March 1st, 2015. Details regarding HPN-center
25
26 103 enrollment and the patient inclusion criteria have been published in the previous cross-sectional survey
27
28
29 104 carried out to evaluate the applicability the clinical classification of CIF, [4]. Sixty-five HPN centers from 22
30
31 105 countries enrolled all adult patients (≥18 years old) dependent on HPN for CIF on March 1st, 2015. Patients
32
33 106 with either benign or malignant disease were included. Patients with active malignant disease were termed
34
35 107 as having “cancer-CIF”. Patients without malignant disease at time of inclusion in the study were termed as
36
37
38 108 having “benign-CIF”. Invasive intra-abdominal desmoid disease was included in the benign group, because
39
40 109 of the chronic nature of the condition and reflecting the fact that it is an established indication for intestinal
41
42 110 transplantation, [2]. A total of 3239 patients, 9.9% with cancer-CIF and 91.1% with benign-CIF were
43
44
45 111 included, [4]. For the purpose of the present study, only patients with benign-CIF were investigated.

46
47 112 *Follow up data collection*

48
49 113 The one-year follow up was carried out on patients enrolled in the 2015 baseline cross-sectional
50
51 114 study. In February 2016, the study coordinator (LP) sent an email to the HPN centers that participated in
52
53 115 the 2015 cross-sectional survey, to invite them to participate in the follow up. The study protocol
54
55
56 116 (**Supplemental material 1**) and the structured database for the data collection were attached to the
57
58 117 invitation letter. Centers were asked to include relevant data from the patient’s medical records between
59
60 118 March 1st, 2015 and March 1st, 2016 and details of the patient’s outcome on March 1st, 2016.

Data were collected into a structured questionnaire embedded in an Excel (Microsoft Co., 2013) database (the ESPEN CIF Action Day database) (**Supplemental material 2**). Centers were invited to contact the study coordinator for any additional explanation or instruction.

Ethical statement

The study was approved by the Home Artificial Nutrition and Chronic Intestinal Failure (HAN&CIF) special interest group of ESPEN. The research was based on anonymized information taken from patient records at time of data collection. The study was conducted with full regard to confidentiality of the individual patient. Each patient was labelled with two anonymized identifications: one given by the HPN-center and one given by the database manager. Ethical committee approval was obtained by the individual HPN centers according to local regulations. The collected data were used only for the study purpose. Contributing centers have been anonymized for data analysis and presentation.

Statistical analysis

The term HPN described the provision of IVS, either FE or PN, at the patient's home. Weaning from equated to stopping IVS [1]. The clinical classification of CIF consisted of 8 categories, based on the type and volume of IVS, calculated as daily mean of the total volume infused per week: volume per day of infusion \times number of infusions per week / 7 (mL/day): FE1 or PN1, ≤ 1000 ; FE2 or PN2, 1001–2000; FE3 or PN3, 2001–3000; FE4 or PN4, >3000 , [6].

The pathophysiological mechanisms of IF were classified as short bowel syndrome with end-jejunostomy (SBS-J), with jejuno-colic anastomosis (SBS-JC) or with jejuno-ileal anastomosis and total colon in continuity (SBS-JIC), intestinal dysmotility (Dysmotility), intestinal fistulas (Fistulas), mechanical obstruction (Obstruction) and extensive small bowel mucosa disease (Mucosal disease), [6].

The underlying diseases were grouped as follows: inflammatory bowel disease (IBD), comprising Crohn's disease and ulcerative colitis; mesenteric ischemia, comprising mesenteric arterious or venous infarction and non-occlusive ischemia; acute post-surgical complications; chronic intestinal pseudo-obstruction, idiopathic or secondary to intestinal or systemic diseases (CIPO); short bowel syndrome due to causes other than mesenteric ischemia, including intra-abdominal adhesions, volvulus, cured cancer, abdominal trauma, intestinal malformation (Other causes of SBS); radiation enteritis; miscellaneous

1
2 146 (collagenous diseases, intra-abdominal desmoids, intestinal polyposis, autoimmune enteropathy,
3
4 147 neurological disease, congenital mucosal disease, celiac disease and other diseases not included in the
5
6 148 above categories).

8
9 149 The reasons for weaning from HPN were categorized as medical and surgical, the latter included non-
10
11 150 transplant procedures and intestinal transplantation. The odds of weaning from HPN were evaluated by
12
13 151 two models of analysis: one including all the weaned patients and one excluding patients weaned because
14
15 152 of non-transplant surgery.

17
18 153 HPN/IF-related complications at March 1st 2016 were categorised as follows: IFALD and CVC-VT
19
20 154 reported as prevalent cases, when they were already present at baseline, and as incident case, when they
21
22 155 developed during the one-year follow up. CRBSI were categorized as incident cases occurring during the
23
24 156 one-year follow up. The incident or prevalent nature of CVC-TV was collected at time of filling out the
25
26 157 database on March 1st 2016, whereas the incident or prevalent nature of IFALD was collected after
27
28
29 158 receiving the filled out database, by asking a specific question to the participating centers.

30
31 159 Practice variation by HPN-center was weighted by including in the statistical analysis the number of
32
33 160 patients enrolled in the study by the individual HPN-center. We also estimated a model with center as a
34
35 161 random effect. Although a slight improvement was noted in model fitting (i.e. in terms of percentage of
36
37 162 correctly classified subjects, with subjects correctly classified: 81% vs 80%), the random effect was omitted
38
39
40 163 in order to preserve the ease of interpretation of the model.

41
42 164 Data are reported as mean \pm standard deviation (SD), median and range, absolute and relative
43
44 165 frequencies.

46
47 166 Binomial and multinomial logistic regressions were carried out for multivariate analysis. The odds
48
49 167 ratio was used to measure the association between the independent variables and the outcome. A
50
51 168 competing risk regression model based on Fine and Gray's proportional subhazards approach was also
52
53 169 performed in order to model the time to occurrence of competing outcomes. Subhazard ratios were
54
55
56 170 presented together with the Cumulative Incidence Functions.

57
58 171 Missing data were excluded from the analysis. Two-tailed p-values less than 0.05 were considered as
59
60 172 statistically significant. All p-values were not corrected for multiple-hypothesis testing.

The analyses were performed using the IBM SSPS Statistics package for Windows, version 23.0 (BM Co., Armonk, NY, USA), R software for Windows, version 3.5.1 (<http://cran.r-project.org>) and STATA/IC 16.0 for Windows

1
2
3
4
5
6
7
8
9
10
11
12
13
14
15
16
17
18
19
20
21
22
23
24
25
26
27
28
29
30
31
32
33
34
35
36
37
38
39
40
41
42
43
44
45
46
47
48
49
50
51
52
53
54
55
56
57
58
59
60

Results

Study population

Fifty-one of the 65 HPN-centers which contributed in the 2015 database collection, participated in the 2016 follow up; this included 2194 of the 2919 benign-CIF (75.1%) patients enrolled in 2015. Most of the patients (79.7%) were from European Countries, the remaining were from Israel, US, Mexico, Argentina, Brazil and Australia. The mean number of patients included in the follow up by center was 43.0 ± 54.1 (median: 19; range: 1-231); number of patients by center: ≤ 19 , n. 26 (51.0%) centers, patients n. 198 (9.0% of total); 20-49, n. 8 (15.7%), patients 253 (11.5%); 50-99, n. 10 (19.6%) centers, patients n.657 (29.9%); ≥ 100 n. 7 (13.7%) centers, patients n. 1086 (49.5%). Nine centers included < 5 patients, each.

Table 1 shows the baseline characteristics and the one-year outcome of the cohort of patients with benign-CIF included in the present study. Two-thirds were females. At baseline, the mean \pm SD, (median; range) patient age, BMI and HPN duration were 51.1 ± 16.2 (56.5;18.0-98.0) years, 22.3 ± 4.4 (21.7; 10.5-59.6) kg/m² and 58.0 ± 70.2 (33.2,0-474) months, respectively. SBS-J was the most frequent pathophysiological mechanism of IF (35.9% of cases). The most frequent underlying disease was Crohn's disease (21.1%). The type of IVS was FE in 7.9% of patients and PN in 92.1%. The IVS volume was significantly lower in the subgroup of patients receiving FE 1055.8 ± 859.6 mL/day (median 857.1, range 107.1–4800.0) than in those receiving PN 1055.8 ± 859.6 mL/day (median 1785.7, range 81.7-7542.8) ($P < 0.001$).

One-year outcome

On March 1st, 2016, 1740 (79.3%) patients were still on HPN, 298 (13.6%) were weaned from HPN and 156 (7.1%) were deceased (**Table 1**). The reason for weaning from HPN was reported in 272 cases: spontaneous intestinal adaptation in 138 (50.7%), non-transplant surgery in 114 (41.9%) (surgical intestinal continuity reconstruction in 97 cases), ITx in 14 (5.1%) and intestinal growth factor therapy in 6 (2.2%) cases. The cause of death was reported in 146 cases: HPN/IF-related in 6 (4.1%) patients (CRBSI 5, IFALD 1), underlying disease-related in 64 (43.8%) (4 due to ITx complications) and other causes (neither HPN/IF nor underlying disease-related) in 76 (52.1%) cases.

HPN/IF complications were recorded in 1859 of the 2194 (84.7%) patients. The presence of IFALD-cholestasis/liver failure was reported in 97 patients (4.4%), 66 prevalent and 31 of which were incident

cases: cholestasis 63 (64.9%), impending liver failure 11 (11.3%), overt liver failure 18 (18.6%), not specified 5 (5.1%). A CVC-VT was present in 53 patients (2.9%), 23 prevalent and 30 incident cases. During the follow up, 273 patients (14.7%) had 344 episodes of CRBSI: one episode in 224 (82.0%); two episodes in 40 (14.7%); three episodes in 5 (1.8%); four episodes in 2 (0.7%); 7 and 10 episodes in 1 (0.4%) patient each one.

A variation of IVS type and volume between baseline and the end of follow up was observed in 317 (14.4%) patients: 22 patients changed the IVS type from FE to PN (12.6% of FE), 26 patients changed from PN to FE (1.3% of PN) and 269 patients changed PN volume (13.3% of PN) (**Supplemental table 1**).

Table 1. Baseline characteristics and one-year outcome and home parenteral nutrition (HPN)/intestinal failure (IF) – related major complications of adult patients with chronic intestinal failure due to benign disease. (IFALD, intestinal failure associated liver disease: cholestasis or liver failure; CVC-VT, central venous catheter-associated deep vein thrombosis; CRBSI, catheter related bloodstream infections). Data are reported as percentages of cases.

Baseline patient cohort n. 2194	One-year outcome			One-year HPN/IF major complications		
	Still on HPN n. 1740	Weaned from HPN n. 298	Deceased n. 156	IFALD n. 97	CVC-VT n. 53	CRBSI n. 273
Gender (%)						
Male (n. 811)	77.3	15.4	7.3	6.7	3.1	14.8
Female (n. 1383)	80.5	12.5	7.0	4.4	2.7	14.6
Age, years (%)						
≤29 (n.187)	78.6	19.8	1.6	8.1	1.9	24.2
30-49 (n.575)	80.3	16.2	3.5	5.8	3.1	16.4
50-69 (n.990)	80.2	12.5	7.3	4.4	3.0	12.3
≥70 (n.442)	76.2	10.0	13.8	5.1	2.7	13.8
BMI, kg/m², (%)						
≤15 (n.57)	80.7	10.5	8.8	6.3	4.2	14.6
15-18.5 (n.324)	74.4	15.7	9.9	6.3	4.7	14.6
18.5-25 (n.1334)	82.5	10.9	6.6	5.5	2.4	13.3
25-30 (n.363)	75.5	18.7	5.8	3.8	2.5	16.8
≥30 (n.111)	67.6	24.3	8.1	3.0	4.0	25.3
Not reported (n.5)						
Duration of HPN, yrs (%)						
≤1 (n.575)	60	31.7	8.3	5.4	1.3	14.8
1-3 (n.575)	79.1	13.2	7.7	4.9	1.9	16.1
3-10 (n.748)	89.6	4.5	5.9	5.3	4.0	14.7
>10 (n.293)	91.5	1.7	6.8	5.5	4.4	12.2
Not reported (n.3)						

Mechanism of IF (%)						
SBS-J (n.788)	78.3	14.6	7.1	7.5	2.0	14.6
SBS-JC (n.459)	88.2	7.4	4.4	4.0	5.4	12.1
SBS-JIC (n.140)	77.9	17.1	5.0	4.4	2.7	18.6
Fistulas (n.149)	64.4	23.5	12.1	4.0	0.8	16.8
Dysmotility (n.398)	81.7	10.8	7.5	2.9	3.2	15.7
Obstruction (n.104)	70.2	18.3	11.5	5.6	1.1	14.4
Mucosal disease (n.156)	73.7	17.9	8.3	4.6	2.3	14.6
Underlying disease (%)						
IBD (n.480)	79.8	15.0	5.2	4.5	1.9	11.8
CIPO (n.299)	85.6	10.4	4.0	3.4	2.7	18.9
Other causes of SBS (n.178)	80.7	9.6	9.6	5.8	5.1	19.1
Miscellaneous (n.218)	76.4	18.0	5.6	7.3	4.5	19.2
Mesenteric ischemia (n.395)	79.2	10.6	10.1	6.4	4.5	13.4
Radiation enteritis (n.164)	82.3	10.4	7.3	2.3	1.5	9.8
Acute surgical complications (n.306)	70.3	20.6	9.2	7.4	1.2	16.3
Not reported (n.154)						
Clinical classification of CIF						
(IVS volume/day of infusion) (%)						
FE1 (≤1 L) (n.118)	89.8	9.3	0.8	0.9	0.9	6.6
FE2 (1-2 L) (n.40)	77.5	12.5	10.0	2.7	0	10.8
FE3 (2-3 L) (n.10)	80.0	20.0	0	0	22.2	22.2
FE4 (>3 L) (n.6)	83.3	16.7	0	16.7	0	0
PN1 (≤1 L) (n.384)	77.1	16.9	6.0	1.9	4.5	10.7
PN2 (1-2 L) (n.944)	78.9	13.3	7.7	3.8	3.1	15.0
PN3 (2-3 L) (n.482)	78.4	13.5	8.1	8.6	2.0	16.2
PN4 (>3 L) (n.210)	81.4	11.0	7.6	12.4	1.6	22-0
Type of IVS (%)						
Total FE (n.174)	86.2	10.9	2.9	1.9	1.9	8.2
Total PN (n.2020)	78.7	13.8	7.5	12.4	2.9	15.3

1
2
3
4
5
6
7
8
9
10
11
12
13
14
15
16
17
18
19
20
21
22
23
24
25
26
27
28
29
30
31
32
33
34
35
36
37
38
39
40
41
42
43
44
45
46

BMI, body mass index; HPN, home parenteral nutrition; IF, intestinal failure; SBS-J, short bowel syndrome with jejunostomy; SBS-JC, short bowel syndrome with jejuno-colic anastomosis with partial colon; SBS-JIC, short bowel syndrome with jejuno-ileal anastomosis with intact colon in continuity; CIF chronic intestinal failure; IVS, intravenous supplementation; FE, fluid and electrolytes alone; PN, parenteral nutrition-admixture; IBD (inflammatory bowel disease): Crohn's disease n.462, Ulcerative colitis n.18; CIPO (chronic intestinal pseudo-obstruction): primary n.222, secondary n.77; Other causes of SBS: Intra-abdominal adhesions n.72, Volvulus n.46, Cured cancer n.21, Abdominal trauma n.26, Intestinal malformation n.13; Miscellaneous: Collagenous disease n. 40, Intra-abdominal desmoids n.22, Intestinal polyposis n.16, Autoimmune enteropathy n.14, Neurological disease n.11, Congenital mucosal disease n.14, Celiac disease n.8, Other diseases n.93

Factors associated with the patient's one-year outcome and HPN/IF-complications

Weaning from HPN, death, presence of IFALD-cholestasis/liver failure or CVC-VT at the end of the follow up, and occurrence of CRBSI during the one-year follow up were considered the dependent variables. The baseline patient's demographics, IF mechanism, underlying disease, IVS characteristics and number of patients enrolled in the study by individual HPN-center were included as independent variables.

Considering the low number of total patients receiving the FE type as well as the very low number of those receiving FE3 and FE4, patients on FE were grouped in a unique cohort for the outcome analyses.

Figure 1 shows the cumulative incidence of weaning off and of death according with the type and the volume of the IVS. When comparing the cumulative incidence function of weaning off and death among groups, non-statistically significant differences were found ($p=0.329$ and $p=0.148$ for weaning off and death respectively): incidence of weaning off was greater in PN1 group and lower in PN4 and FE groups; incidence of death was lower in the FE group .

Odds of one-year outcome

The associations with the IVS type and volume were analyzed in comparison with the PN1 category. The odds of weaning from HPN (**Figure 2 and Supplemental table 2**): a) were lower in the FE type category and in the greatest PN volume categories (PN2, PN3 and PN4); b) were lower in the oldest decades of age, in the longest duration of HPN categories and in the miscellaneous group of underlying diseases; c) were higher in the underweight, overweight and obese BMI categories; d) showed no association with the number of patients included in the study by individual HPN-centers.

The results were confirmed when excluding those patients who were weaned because of a non-transplant surgical procedure (**Supplemental table 3**). Furthermore, significant lower odds of weaning off were observed in patients who had SBS-J or SBS-JC as mechanisms of IF and in those who had an underlying disease categorized in the miscellaneous group.

The odds of death on HPN (**Figure 2**): a) showed a non-statistically significant decreased risk for the FE type of IVS with respect to PN1 type ; b) were higher in the oldest age categories and in the lowest BMI categories; c) in comparison with SBS-J mechanism of IF, they were lower in the other SBS types and were higher in the other mechanisms of IF, excepting the extensive mucosal disease; d) were increased in the

1
2 248 mesenteric ischemia and decreased in the CIPO groups of underlying disease; e) showed a negative
3
4 249 association with the number of patients included in the study by individual HPN-centers.
5

6 250 The competing risk analysis for the risk of death and of weaning from HPN confirmed the results of
7
8
9 251 the multinomial analysis (**Supplemental table 4**).
10

11 252 *Odds of major complications of HPN/IF*
12

13 253 The results are reported in **table 2**.
14

15 254 The odds of the presence of IFALD-cholestasis/liver failure: a) were higher in the greatest PN volume
16
17
18 255 categories in comparison with PN1 and were similar between PN1 and the FE type of IVS; b) were lower in
19
20 256 dysmotility mechanism of IF; c) were higher in the group with acute surgical complications as underlying
21
22 257 disease; d) showed no association with the number of patients included in the study by individual HPN-
23
24 258 centers
25

26 259 The odds of the presence of CVC-VT: a) showed no association with the IVS categories; b) were
27
28
29 260 higher in the in the longest HPN duration categories and in the underweight and obese categories of BMI;
30
31 261 c) showed a negative association with the number of patients included in the study by individual HPN-
32
33 262 centers.
34

35 263 The odds of CRBSI: a) were higher with the increase of the volume of the PN and were similar
36
37
38 264 between PN1 and the FE type of IVS; b) were lower in older patients; c) were higher in the overweight and
39
40 265 obese category of BMI and in the CIPO and miscellaneous categories of underlying disease; d) showed a
41
42 266 negative association with the number of patients included in the study by individual HPN-centers.
43

44 267 The analyses including only the incident cases of IFALD and of CVC-VT showed non-statistically
45
46
47 268 significant odds ratios (**Supplemental table 5**).
48

49 269
50
51
52
53
54
55
56
57
58
59
60

Table 2. Binomial logistic analysis of factors independently associated with the one-year probability of the intestinal failure associated liver disease, cholestasis or liver failure (IFALD), central venous catheter-associated deep vein thrombosis (CVC-VT) and catheter related bloodstream infections (CRBSI) in adult patients on home parenteral nutrition for chronic intestinal failure. Number of analyzed cases due to complete case approach: IFALD-cholestasis/liver failure (presence: 91, absence: 1610), CVC-VT (presence: 49, absence: 1652), CRBSI (presence: 257, absence: 1443).

Independent factors	IFALD-cholestasis/liver failure			CVC-VT			CRBSI		
	OR	95% CI	P	OR	95% CI	P	OR	95% CI	P
IVS type and volume									
PN1 (≤ 1 L)	1			1			1		
PN2 (1-2 L)	1.824	0.738-4.508	0.193	0.784	0.370-1.663	0.527	1.507	0.967-2.346	0.070
PN3 (2-3 L)	3.794	1.522-9.458	0.004	0.513	0.194-1.354	0.178	1.664	1.018-2.721	0.042
PN4 (> 3 L)	4.828	1.792-13.004	0.002	0.437	0.110-1.732	0.239	2.523	1.423-4.475	0.002
FE (total)	0.849	0.202-3.569	0.823	0.384	0.078-1.894	0.240	0.743	0.362-1.525	0.418
Gender									
Male	1			1			1		
Female	0.703	0.449-1.099	0.122	0.798	0.434-1.470	0.470	1.066	0.797-1.427	0.666
Age (years)									
≤ 29	1			1			1		
30-49	0.775	0.355-1.693	0.522	1.875	0.495-7.108	0.355	0.597	0.371-0.961	0.034
50-69	0.694	0.317-1.517	0.360	2.017	0.545-7.461	0.293	0.469	0.291-0.756	0.002
≥ 70	0.822	0.339-1.994	0.665	1.657	0.396-6.939	0.489	0.551	0.319-0.952	0.033
BMI (kg/m²)									
18.5-25.0	1			1			1		
≤ 15.0	1.064	0.233-4.858	0.936	2.705	0.566-12.935	0.212	0.837	0.333-2.106	0.706
15.0-18.5	1.612	0.872-2.983	0.128	2.335	1.093-4.987	0.028	1.061	0.697-1.615	0.782
25.1-30.0	0.611	0.310-1.207	0.156	1.134	0.470-2.738	0.779	1.460	1.012-2.108	0.043
≥ 30.0	0.591	0.172-2.036	0.405	3.124	0.829-11.769	0.092	2.769	1.580-4.851	0.000
Duration of HPN (years)									
≤ 1	1			1			1		

1										
2	1-3	1.025	0.553-1.899	0.938	1.526	0.516-4.515	0.445	1.157	0.787-1.703	0.458
3	3-10	1.070	0.594-1.929	0.821	2.889	1.093-7.636	0.032	1.110	0.762-1.618	0.586
4	>10	0.982	0.470-2.052	0.962	3.477	1.179-10.256	0.024	0.853	0.522-1.393	0.524
5										
6	Mechanism of IF									
7										
8	SBS-J	1			1			1		
9	SBS-JC	0.649	0.338-1.245	0.193	1.926	0.848-4.374	0.117	0.964	0.629-1.479	0.868
10	SBS-JIC	0.629	0.208-1.902	0.411	0.760	0.189-3.060	0.699	1.377	0.754-2.516	0.298
11	Fistulas	0.593	0.219-1.607	0.304	0.580	0.071-4.733	0.611	1.207	0.676-2.154	0.525
12	Dysmotility	0.317	0.115-0.878	0.027	1.431	0.428-4.790	0.561	0.759	0.422-1.365	0.357
13	Obstruction	1.072	0.373-3.083	0.897	0.438	0.050-3.859	0.457	0.800	0.376-1.704	0.563
14	Mucosal disease	0.712	0.260-1.945	0.507	0.868	0.203-3.713	0.849	0.824	0.445-1.526	0.538
15										
16	Underlying disease									
17										
18	IBD	1			1			1		
19	CIFO	1.459	0.481-4.427	0.505	1.244	0.303-5.113	0.762	2.098	1.092-4.03	0.026
20	Other causes of SBS	1.265	0.501-3.192	0.619	2.308	0.742-7.18	0.149	1.490	0.843-2.634	0.170
21	Miscellaneous	2.038	0.909-4.567	0.084	2.308	0.723-7.366	0.158	1.712	1.002-2.924	0.049
22	Mesenteric ischemia	1.468	0.732-2.943	0.280	2.063	0.798-5.333	0.135	1.012	0.626-1.635	0.963
23	Radiation enteritis	0.613	0.170-2.210	0.454	0.824	0.161-4.206	0.816	0.967	0.487-1.918	0.923
24	Acute surgical complications	2.210	1.089-4.482	0.028	0.573	0.142-2.311	0.433	1.143	0.700-1.864	0.593
25										
26	N. of patients included by	0.939	0.765-1.153	0.551	0.580	0.451-0.745	0.000	0.710	0.626-0.806	0.000
27	center									
28										
29										

30 BMI, body mass index; HPN, home parenteral nutrition; IF, intestinal failure; SBS-J, short bowel syndrome with jejunostomy; SBS-JC, short bowel syndrome with jejunocolon
31 anastomosis with partial colon; SBS-JIC, short bowel syndrome with jejunocolon anastomosis with intact colon; IBD, inflammatory bowel disease, CIFO, chronic intestinal
32 pseudo-obstruction; CIF chronic intestinal failure; IVS, intravenous supplementation; FE, fluid and electrolytes alone; PN, parenteral nutrition-admixture.
33
34
35
36
37
38
39
40
41
42
43
44
45
46

Discussion

This is the first study aimed at investigating the association between IVS requirement, CIF outcome and the occurrence of major complications in a very large international cohort of HPN-dependent patients with CIF due to benign underlying disease. The results show that both the type and the volume of the IVS are independently associated with the one-year odds of weaning from HPN and of HPN/IF-associated major complications, as well as with the risk of mortality, albeit the latter observation being based on a non-statistically significant finding. In patients with CIF, the type and the volume of the IVS requirement primarily depends on the degree of the reduction of gut function, [6]. However, other factors may be involved, such as the patient's metabolic condition and vital organ function, the patient's compliance with the prescribed treatment (e.g. drugs and dietary prescriptions) as well as the treatment protocols of the multidisciplinary team caring for him/her, [1,2]. Therefore, while any association between IVS characteristics and the patient's outcome or the occurrence of HPN/IF complications may not be considered causal, they may indicate that the type and the volume of the IVS reflect comprehensive odds of morbidity and mortality for HPN-dependent patients, independently from the factors that may have determined their prescription. This is further strengthened by the observation that none of the other independent factors entered in the multivariate analysis was contemporaneously associated with odds of weaning from HPN, death and occurrence of IFALD and CRBSI. These data support the potential role of the ESPEN clinical classification of CIF, based on the type and the volume of the IVS, as a potential indicator of CIF severity. Further follow up surveys are required to investigate if this could be translated into a long-term marker of CIF.

The one-year odds of death depended on the interaction between the IVS type and volume rather than on either characteristic alone. Indeed, a non-statistically significant decreased risk of death was observed in those receiving the FE type of IVS, but no association was found with the PN-volume alone; since HPN-related deaths were very rare, [3], these results would suggest a less severe clinical condition in patients with CIF requiring only FE supplementation. Future studies will clarify whether the association between the current volume categories of IVS and the risk of death will prove to be statistically significant

in the long-term and/or whether a different categorization of the IVS volume will capture any association between IVS volume and risk of death, both in the short and in the long-term.

The one-year probability of weaning from HPN was associated with both the type and volume of IVS. The PN1 volume (≤ 1 L/day) showed higher odds of weaning than either the greater PN-volumes or FE-type IVS. There could be several reasons for a longer maintenance of low volume FE than of low volume PN IVS: a more difficult intestinal rehabilitation of fluid and electrolytes than of macronutrient absorption due to concomitant secondary mechanisms of IF causing increased intestinal secretion [1]; the concomitant presence of a reduced kidney function requiring the maintenance of optimal hydration, [2,7]; physician's and/or patient's perception of a lower risk of IVS-associated complications with FE than with PN; patient's better acceptance of FE than of PN, because of shorter duration of FE infusion compared to PN, [2]; the lower cost of FE. All of these factors would make weaning from FE slower/less likely than weaning from PN.

The risk of IFALD and of the occurrence of CRBSIs were also associated with both the type and the volume of the IVS, whereas no association was observed with the presence of CVC-VT. The odds of IFALD and of CRBSI were greater in patients receiving the highest volumes of PN in comparison with the lowest PN-volumes and the FE-type of IVS. Furthermore, the odds of these complications were higher in the greater PN volume categories. These data are in keeping with previous studies, [2, 8, 9]. The pathogenesis of IFALD is multifactorial, including factors related to the IVS, underlying gastrointestinal disease and systemic factors, especially episodes of sepsis [2, 10]. Intravenous supplementation overfeeding and a high amount of lipid emulsion are recognized causes of IFALD [2, 10]. Similarly, CRBSI occurrence has also previously been reported to occur more frequently in those dependent on an increased number of days of IVS, [8]; this may relate to more frequent handling of the central venous catheter increasing infection risk or the association between macronutrients, vitamins and trace metals affecting microbial growth in the PN admixture, [11, 12].

Most of the other independent factors found to be associated with patient's outcome and HPN/IF complications were in keeping with data from previous studies, [2, 3, 8, 10]. As expected, non-transplant surgery was the cause of weaning off HPN in a large percentage of patients, [13]. Notably, data on the causes of death on long-term HPN are consistent with previous observations, [3-5, 13-15], even though the

percentage of HPN-related deaths (4%) was lower than that reported in longer retrospective surveys (10-14%), [3-5,13-15]. This could be due to the short duration of the present follow up, as it is known that the rate of the HPN-related death increases with the duration of the treatment, [4]. The 344 episodes of CRBSI registered in the 1859 patients accounted for a rate of CRBSI of 0.18 per catheter-year, or 0.50 per 1000 catheter-days, a rate that is in the range reported in the literature, [2]. The 30 incident cases of CVC-VT observed at one-year follow up, accounted for an incidence rate of 0.016 per catheter-year, that is also in the lower range of the literature (0.02-0.09 cases per catheter-year), [2,16]. The same incidence rate can be accounted for the 31 incident cases of IFALD-cholestasis/liver failure. This data is of some relevance as no prospective study has yet been carried out on this HPN/IF complication, [17].

The weakness of the study is mainly represented by the retrospective collection of data prospectively recorded in the previous 12 months, which would imply a risk of some underreporting, and by not using a co-morbidity index to assess the patient's general condition. However, CIF can develop as a complication of a number of gastrointestinal or systemic underlying diseases having different pathogenesis and outcomes, [1]. Therefore, the underlying disease that we collected and included in the statistical analysis, could be considered as a surrogate co-morbidity index, as supported by the finding of an increased risk of death in patients with CIF due to mesenteric ischemia. The strength of the study is clearly reflected by its international multicenter structure and by the study population, which is the largest cohort of patients with CIF ever enrolled in a single survey. These characteristics should avoid the potential bias associated with the analysis of individual center cohorts, which could be influenced by local practice and expertise and mitigate the impact of the above possible weakness on statistical analyses. Considering that CIF is a rare disease, [1] the observation of lower odds of death and of HPN/IF complications in HPN-center which included the larger number of patients in the study would support the importance of creating networks facilitating the referral of CIF patients to few but appropriately organized and experienced centers, [18]. Finally, the agreement between our results and the risk factors, other than IVS, reported by previous studies would support the overall reliability of our findings.

In conclusion, the type of the IVS, either FE or PN, and the volume of the PN-admixture, as categorized by the ESPEN clinical classification of CIF, were found to be independently associated with the

1
2 359 one-year risk of death, of weaning from HPN and of major complications of HPN/IF. These results support
3
4 360 the ESPEN categorization of the IVS as potential marker of the severity of CIF.
5
6 361
7
8
9
10
11
12
13
14
15
16
17
18
19
20
21
22
23
24
25
26
27
28
29
30
31
32
33
34
35
36
37
38
39
40
41
42
43
44
45
46
47
48
49
50
51
52
53
54
55
56
57
58
59
60

References

1. Pironi L, Arends J, Baxter J, et al.; Home Artificial Nutrition & Chronic Intestinal Failure and the Acute Intestinal Failure Special Interest Groups of ESPEN. ESPEN endorsed recommendations. Definition and classification of intestinal failure in adults. *Clin Nutr* 2015;34:171-80 doi: 10.1016/j.clnu.2014.08.017. Epub 2014 Sep 21
2. Pironi L, Arends J, Bozzetti F, et al.; Home Artificial Nutrition & Chronic Intestinal Failure Special Interest Group of ESPEN. ESPEN guidelines on chronic intestinal failure in adults. *Clin Nutr* 2016;35:247-307 doi: 10.1016/j.clnu.2016.01.020. Epub 2016 Feb 8.
3. Pironi L, Goulet O, Buchman A, et al.; Home Artificial Nutrition and Chronic Intestinal Failure Working Group of ESPEN. Outcome on home parenteral nutrition for benign intestinal failure: a review of the literature and benchmarking with the European prospective survey of ESPEN. *Clin Nutr* 2012;31:831-45 doi: 10.1016/j.clnu.2012.05.004. Epub 2012 Jun 2.
4. Pironi L, Joly F, Forbes A, et al.; Home Artificial Nutrition & Chronic Intestinal Failure Working Group of the European Society for Clinical Nutrition and Metabolism (ESPEN). Long-term follow-up of patients on home parenteral nutrition in Europe: implications for intestinal transplantation. *Gut* 2011;60:17-25 doi: 10.1136/gut.2010.223255. Epub 2010 Nov 10.
5. Joly F, Baxter J, Staun M, et al.; ESPEN HAN CIF group. Five-year survival and causes of death in patients on home parenteral nutrition for severe chronic and benign intestinal failure. *Clin Nutr* 2018;37:1415-1422 doi: 10.1016/j.clnu.2017.06.016. Epub 2017 Jun 19.
6. Pironi L, Konrad D, Brandt C, et al. Clinical classification of adult patients with chronic intestinal failure due to benign disease: An international multicenter cross-sectional survey. *Clin Nutr* 2018;37:728-738 doi: 10.1016/j.clnu.2017.04.013. Epub 2017 Apr 19.
7. Agostini F, Sasdelli AS, Guidetti M, et al. Outcome of kidney function in adults on long-term home parenteral nutrition for chronic intestinal failure. *Nutrition* 2018, doi: <https://doi.org/10.1016/j.nut.2018.10.005>

8. Dreesen M, Foulon V, Spriet I, et al. Epidemiology of catheter-related infections in adult patients receiving home parenteral nutrition: a systematic review. *Clin Nutr* 2013;32:16-26 doi: 10.1016/j.clnu.2012.08.004. Epub 2012 Aug 21.
9. Sasdelli AS, Agostini F, Pazzeschi C, et al. Assessment of Intestinal Failure Associated Liver Disease according to different diagnostic criteria. *Clin Nutr* Published online first: 8 May 2018. doi: 10.1016/j.clnu.2018.04.019.
10. Lal S, Pironi L, Wanten G, et al.; Home Artificial Nutrition & Chronic Intestinal Failure Special Interest Group of the European Society for Clinical Nutrition and Metabolism (ESPEN). Clinical approach to the management of Intestinal Failure Associated Liver Disease (IFALD) in adults: A position paper from the Home Artificial Nutrition and Chronic Intestinal Failure Special Interest Group of ESPEN. *Clin Nutr* 2018;37:1794-1797 doi: 10.1016/j.clnu.2018.07.006. Epub 2018 Jul 9.
11. Austin PD, Hand KS, Elia M. Systematic review and meta-analyses of the effect of lipid emulsion on microbial growth in parenteral nutrition. *J Hosp Infect* 2016;94:307-319 doi: 10.1016/j.jhin.2016.08.026. Epub 2016 Sep 7.
12. Buchman AL, Opilla M, Kwasny M, et al. Risk factors for the development of catheter-related bloodstream infections in patients receiving home parenteral nutrition. *JPEN J Parenter Enteral Nutr* 2014;38:744-9 doi: 10.1177/0148607113491783. Epub 2013 Jun 6.
13. Amiot A, Messing B, Corcos O, et al. Determinants of home parenteral nutrition dependence and survival of 268 patients with non-malignant short bowel syndrome. *Clin Nutr* 2013;32:368-74 doi: 10.1016/j.clnu.2012.08.007. Epub 2012 Aug 23.
14. Dibb M, Soop M, Teubner A, et al. Survival and nutritional dependence on home parenteral nutrition: Three decades of experience from a single referral centre. *Clin Nutr* 2017;36:570-576 doi: 10.1016/j.clnu.2016.01.028. Epub 2016 Feb 22.
15. Brandt CF, Tribler S, Hvistendahl M, et al. Home Parenteral Nutrition in Adult Patients With Chronic Intestinal Failure: Catheter-Related Complications Over 4 Decades at the Main Danish Tertiary Referral Center. *JPEN J Parenter Enteral Nutr* 2018;42:95-103 doi: 10.1177/0148607116678766. Epub 2017 Dec 11.

- 1
2 414 16. Pironi L, Corcos O, Forbes A, et al.; ESPEN Acute and Chronic Intestinal Failure Special Interest
3
4 415 Groups. Intestinal failure in adults: Recommendations from the ESPEN expert groups. *Clin Nutr*
5
6 416 2018;37:1798-1809 doi: 10.1016/j.clnu.2018.07.036. Epub 2018 Aug 18..
7
8
9 417 17. Bond A, Huijbers A, Pironi L, Schneider SM, Wanten G, Lal S. Review article: diagnosis and
10
11 418 management of intestinal failure-associated liver disease in adults. *Aliment Pharmacol Ther*. 2019
12
13 419 Sep;50(6):640-653. doi: 10.1111/apt.15432. Epub 2019 Jul 25. Review. PubMed PMID: 31342540.
14
15 420 18. <https://www.engage.england.nhs.uk/consultation/severe-intestinal-failure-services-for-adults/>
16
17
18 421

1
2
3
4
5
6
7
8
9
10
11
12
13
14
15
16
17
18
19
20
21
22
23
24
25
26
27
28
29
30
31
32
33
34
35
36
37
38
39
40
41
42
43
44
45
46
47
48
49
50
51
52
53
54
55
56
57
58
59
60

Figure headings and footnotes

Figure 1. Cumulative one-year incidence of weaning from home parenteral nutrition (HPN) and of death according to the intravenous supplementation (IVS) type and volume. IVS type: FE, fluid and electrolyte alone; PN, parenteral nutrition admixture containing energy. IVS volume (L/day): PN1, ≤1; PN2, 1-2; PN3, 2-3; PN4, >3. FE1, FE2, FE3 and FE4 were grouped in a unique cohort (FE). The patient risk set is reported in **supplemental table 2**.

Figure 2. Forest plot of the analysis of factors associated with the one-year probability of weaning from home parenteral nutrition (HPN) or of death and of home parenteral nutrition /intestinal failure (HPN/IF) in adult patients with chronic intestinal. Number of analyzed cases due to complete case approach: 2035 (Still in HPN: 1610, Weaned from HPN: 278, Deceased: 147).

Footnote figure 2

BMI, body mass index; HPN, home parenteral nutrition; IF, intestinal failure; SBS-J, short bowel syndrome with jejunostomy; SBS-JC, short bowel syndrome with jejuno-colon anastomosis with partial colon; SBS-JIC, short bowel syndrome with jejuno-ileo anastomosis with intact colon; IBD, inflammatory bowel disease, CIPO, chronic intestinal pseudo-obstruction; CIF chronic intestinal failure; IVS, intravenous supplementation; FE, fluid and electrolytes alone; PN, parenteral nutrition-admixture.

Acknowledgements

Contributing coordinators and centers by country

Argentina

Adriana N. Crivelli, Hector Solar Muñiz; Hospital Universitario Fundacion Favaloro, Buenos Aires

Australia

Brooke R. Chapman; Austin Health, Melbourne

Lynn Jones, Peter Lim; Royal Prince Alfred Hospital, Sydney

Margie O'Callaghan; Flinders Medical Centre, Adelaide

Emma Osland, Ruth Hodgson, Siobhan Wallin, Kay Lasenby; Royal Brisbane and Women's Hospital, Herston

Belgium

Andre Van Gossum; Hôpital Erasme, Brussels

Brazil:

Andre Dong Won Lee; Hospital das Clinicas da Faculdade de Medicina da Universidade de São Paulo, São Paulo

Bulgaria

Maryana Doitchinova-Simeonova; Bulgarian Executive Agency of Transplantation, Sofia

Croatia

Zeljko Krznaric; University Hospital Centre Zagreb, Zagreb

Denmark

Henrik Højgaard Rasmussen; Center for Nutrition and Bowel Disease, Aalborg University Hospital, Aalborg

France

Cecile Chambrier; Hospices Civils de Lyon, Centre Hospitalier Lyon Sud, Lyon

Francisca Joly, Vanessa Boehm, Julie Bataille, Lore Billiauws; Beaujon Hospital, Clichy

Florian Poullenot; CHU de Bordeaux, Hôpital Haut-Lévêque, Pessac

Stéphane M. Schneider; CHU Archet, Nice

Ronan Thibault; Nutrition unit, CHU Rennes, Nutrition Metabolisms and Cancer institute,

NuMeCan, INRA, INSERM, Université Rennes, Rennes

Hungary

Peter Sahin, Gábor Udvarhelyi; St. Imre Hospital, Budapest

Israel

Miriam Theilla; Rabin Medical Center, Petach Tikva

Italy

Anna Simona Sasdelli, Loris Pironi; S. Orsola University Hospital, Bologna

Umberto Aimasso, Merlo F. Dario; Città della Salute e della Scienza, Torino

Luisa Masconale, Valentino Bertasi; ULSS 22 Ospedale Orlandi, Bussolengo

Francesco W. Guglielmi, Nunzia Regano; San Nicola Pellegrino Hospital, Trani

Paolo Orlandoni; IRCCS- INRCA, Ancona

Santarpia Lidia, Maria C. Pagano, Lucia Alfonsi; Federico II University, Italy

Corrado Spaggiari; AUSL di Parma, Parma

Marina Taus, Debora Busni; Ospedali Riuniti, Ancona

México

Aurora E. Serralde-Zúñiga; Instituto Nacional de Ciencias Médicas y Nutrición Salvador Zubirán, México City

Poland

Marek Kunecki; M. Pirogow Hospital, Lodz

1
2 494 Przemysław Matras; Medical University of Lublin, Lublin
3 495 Konrad Matysiak; H.Święcicki University Hospital, Poznań
4 496 Kinga Szczepanek; Stanley Dudrick's Memorial Hospital, Skawina
5 497 Anna Zmarzły; J. Gromkowski City Hospital, Wrocław
6 498 **Slovenia**
7 499 Nada Rotovnik Kozjek; Institute of Oncology, Ljubljana
8 500 **Spain**
9 501 Cristina Cuerda; Hospital General Universitario Gregorio Marañón, Madrid
10 502 Carmen Garde; Hospital Universitario Donostia, San Sebastian
11 503 Nuria M. Virgili; Hospital Universitari de Bellvitge, Barcelona
12 504 Gabriel Oliveira; IBIMA, Hospital Regional Universitario de Málaga, Universidad de Málaga, Málaga
13 505 M^a Estrella Petrina Jáuregui; Complejo Hospitalario de Navarra, Pamplona
14 506 José P. Suárez-Llanos; Hospital Universitario Nuestra Señora de Candelaria, Santa Cruz de Tenerife
15 507 Ana Zugasti Murillo; Hospital Virgen del Camino, Pamplona
16 508 **Sweden**
17 509 Lars Ellegard; Sahlgrenska University Hospital, Gothenburg
18 510 **The Netherlands**
19 511 Mireille Serlie, Cora Jonker; Academic Medical Center, Amsterdam
20 512 Geert Wanten; Radboud University Medical Center, Nijmegen
21 513 **United Kingdom**
22 514 Sheldon C. Cooper; University Hospitals Birmingham NHS Foundation Trust, Birmingham
23 515 Joanne Daniels; Nottingham University Hospital NHS Trust, Nottingham
24 516 Simona Di Caro, Niamh Keane, Pinal Patel; University College Hospital, London
25 517 Alastair Forbes; Norfolk and Norwich University Hospital, Norwich
26 518 Sarah-Jane Hughes; Regional Intestinal Failure Service, Belfast Health and Social Care Trust,
27 519 Northern Ireland
28 520 Amelia Jukes, Rachel Lloyd; University Hospital of Wales, Cardiff
29 521 Simon Lal, Arun Abraham, Gerda Garside, Michael Taylor; Salford Royal NHS Foundation Trust,
30 522 Salford
31 523 Nicola Wyer, Reena Parmar, Nicola Burch; University Hospital, Coventry
32 524 **United States of America**
33 525 Charlene Compher; Hospital of the University of Pennsylvania, Philadelphia, PA
34 526 Denise Jezerski, Ezra Steiger; Cleveland Clinic Foundation, Cleveland, OH
35
36
37
38
39
40
41
42
43
44 527
45
46 528 **Statistical analysis performed by:** Elena Nardi, PhD statistician, Giorgia Brilli, statistician, and
47
48 529 Dr. Fabrizio Ghigliano, statistician; Department of Medical and Surgical Sciences, University of
49
50
51 530 Bologna, Italy
52
53 531 **Database manager:** Dr. Marianna Mastroroberto, MD, PhD and Dr. Fabrizio Ghigliano, statistician;
54
55
56 532 Department of Medical and Surgical Sciences, University of Bologna, Italy
57
58 533
59
60 534 **Funding source**

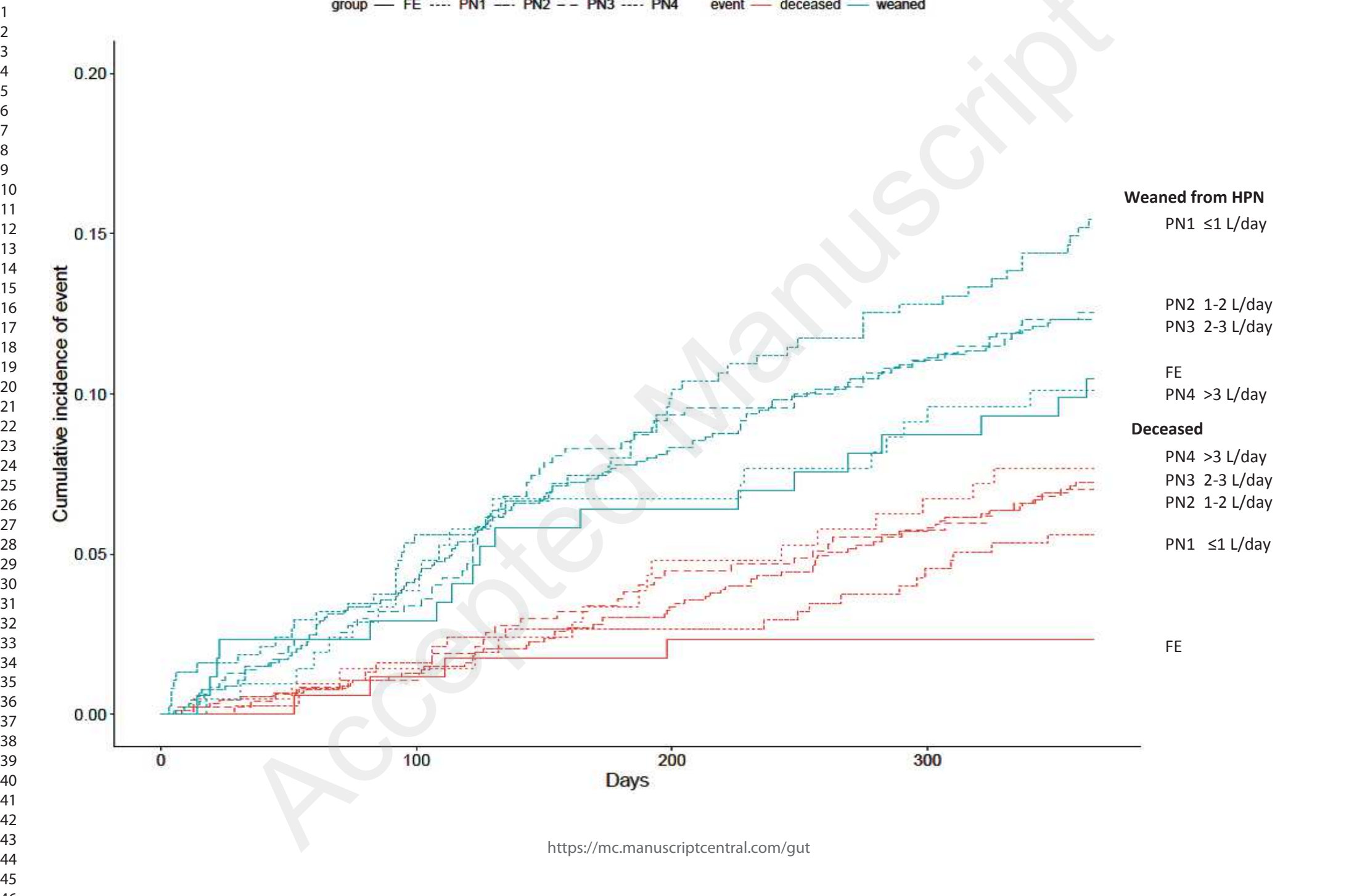
The project of the ESPEN database for Chronic Intestinal Failure was promoted by the ESPEN Executive Committee in 2013, was approved by the ESPEN Council and was supported by an ESPEN grant.

Statement of authorship

LP devised the study protocol, collected the data, analyzed the results and drafted the manuscript. The Home Artificial Nutrition & Chronic Intestinal Failure Special Interest Group of ESPEN discussed and approved the protocol study, discussed the results and reviewed the manuscript before submission. All the co-Authors participated in the acquisition of data, revised the final analysis, approved the final version of the manuscript and were accountable for all aspects of the work.

Conflict of interest statements

None declared



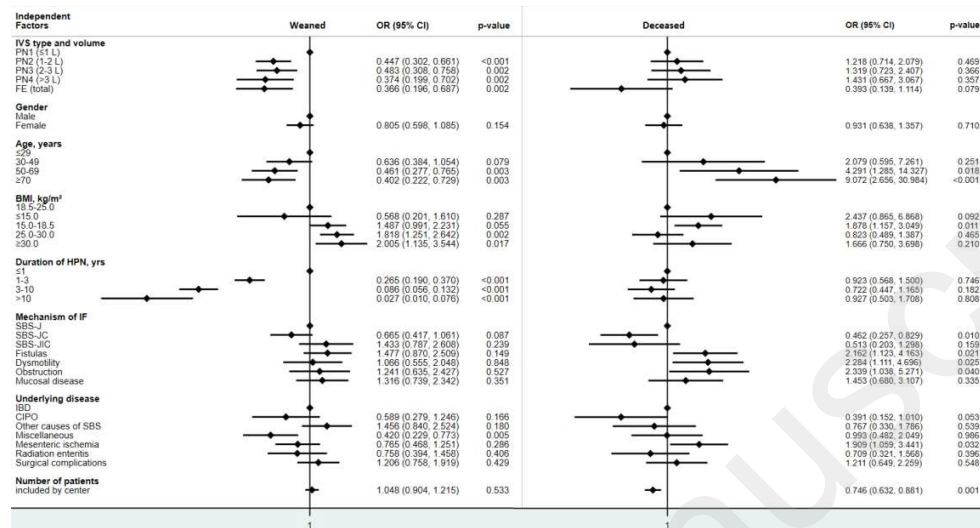


Figure 2

1
2 1 **The intravenous supplementation type and volume is associated with one-year outcome and the**
3
4 2 **major complications in patients with chronic intestinal failure**
5
6
7 3
8
9 4 Loris Pironi, Ezra Steiger, Francisca Joly, Geert Wanten, Cecile Chambrier, Umberto Aimasso, Anna Simona
10
11 5 Sasdelli, Kinga Szczepanek, Amelia Jukes, Miriam Theilla, Marek Kunecki, Joanne Daniels, Mireille Serlie,
12
13 6 Sheldon C. Cooper, Florian Poullenot, Henrik H. Rasmussen, Charlene Compher, Adriana Crivelli, Sarah-Jane
14
15 7 Hughes, Lidia Santarpia, Francesco W. Guglielmi, Nada Rotovnik Kozjek, Lars Ellegard, Stéphane M.
16
17 8 Schneider, Przemysław Matras , Alastair Forbes, Nicola Wyer, Anna Zmarzly, Marina Taus, Margie
18
19 9 O'Callaghan, Emma Osland, Ronan Thibault, Cristina Cuerda, Lynn Jones, Brooke Chapman, Peter Sahin,
20
21 10 Nuria M. Virgili, Andre Dong Won Lee, Paolo Orlandoni, Konrad Matysiak, Simona Di Caro, Maryana
22
23 11 Doitchinova-Simeonova, Luisa Masconale, Corrado Spaggiari, Carmen Garde, Aurora E. Serralde-Zúñiga,
24
25 12 Gabriel Oliveira, Zeljko Krznaric, Estrella Petrina Jáuregui, Ana Zugasti Murillo, José P. Suárez-Llanos, Elena
26
27 13 Nardi, André Van Gossum and Simon Lal.
28
29 14 The Home Artificial Nutrition and Chronic Intestinal Failure special interest group of the European Society
30
31 15 for Clinical Nutrition and Metabolism (ESPEN)
32
33 16
34
35 17 Corresponding author
36
37 18 Loris Pironi
38
39 19 Center for Chronic Intestinal Failure
40
41 20 Department of Digestive System
42
43 21 St. Orsola Hospital, University of Bologna
44
45 22 Via Massarenti, 9 - 40138 Bologna, Italy
46
47 23 Tel: +39 - 051 - 6363073
48
49 24 Fax: +39 - 051 -6364193
50
51 25 Email: loris.pironi@unibo.it
52
53 26 Word count: ~~3716~~3883
54
55
56
57
58
59
60