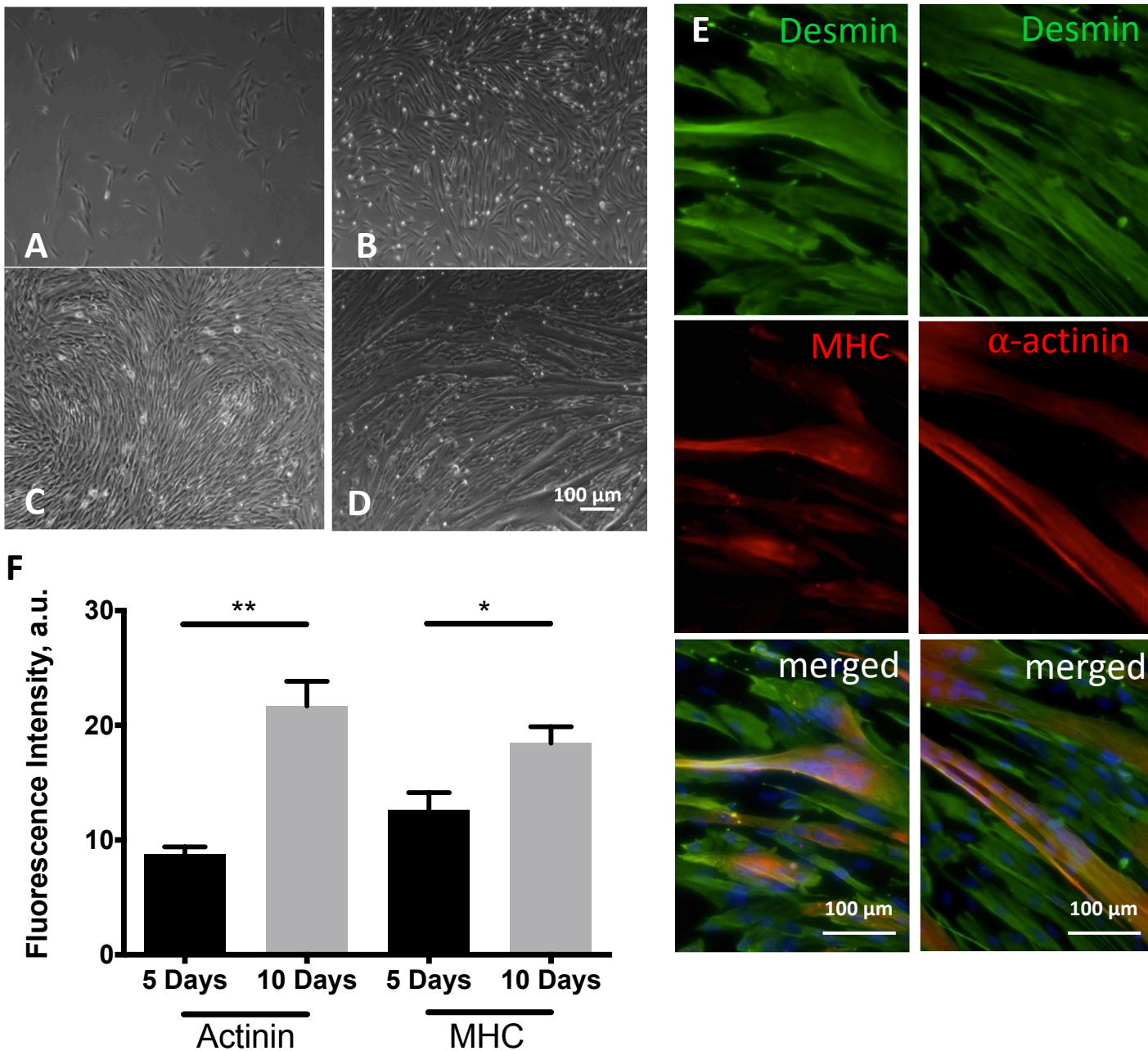


Supplementary Figure S2



Supplementary Figure S2: Characterization of primary human myoblasts. **A-D.** Phase contrast representative images of primary myogenic cells cultured under proliferating condition at 1 (A) and 2 (B) days after seeding, at confluence (C) and after 7 days from from switching to differentiation medium in standard 2D culture dishes (D). **E.** Representative images of immunofluorescence analysis for desmin (green), α -actinin (red) and myosin heavy chain (MHC, red). Nuclei were stained with hoechst (blue). **F.** Quantification of fluorescence intensity for actinin and dystrophin in primary human myoblasts cultured as 3D myobundles 5 or 10 days after seeding. Data are shown as mean \pm s.e.m. of 3 independent replicates; * $P < 0.05$; ** $P < 0.02$ with Student's t-test.