

Alma Mater Studiorum Università di Bologna  
Archivio istituzionale della ricerca

Adult infiltrating gliomas with WHO 2016 integrated diagnosis: additional prognostic roles of ATRX and TERT

This is the final peer-reviewed author's accepted manuscript (postprint) of the following publication:

*Published Version:*

*Availability:*

This version is available at: <https://hdl.handle.net/11585/721380> since: 2020-02-04

*Published:*

DOI: <http://doi.org/10.1007/s00401-017-1690-1>

*Terms of use:*

Some rights reserved. The terms and conditions for the reuse of this version of the manuscript are specified in the publishing policy. For all terms of use and more information see the publisher's website.

This item was downloaded from IRIS Università di Bologna (<https://cris.unibo.it/>).  
When citing, please refer to the published version.

(Article begins on next page)



Published in final edited form as:

*Acta Neuropathol.* 2017 June ; 133(6): 1001–1016. doi:10.1007/s00401-017-1690-1.

## Adult Infiltrating Gliomas with WHO 2016 Integrated Diagnosis: Additional Prognostic Roles of ATRX and *TERT*

Melike Pekmezci<sup>1,2</sup>, Terri Rice<sup>3</sup>, Annette M. Molinaro<sup>3,4</sup>, Kyle M. Walsh<sup>3,4</sup>, Paul A. Decker<sup>5</sup>, Helen Hansen<sup>3</sup>, Hugues Sicotte<sup>5</sup>, Thomas M. Kollmeyer<sup>6</sup>, Lucie S. McCoy<sup>3</sup>, Gobinda Sarkar<sup>6</sup>, Arie Perry<sup>1,3</sup>, Caterina Giannini<sup>6</sup>, Tarik Tihan<sup>3</sup>, Mitchel S. Berger<sup>3</sup>, Joseph L. Wiemels<sup>4,8</sup>, Paige M. Bracci<sup>4</sup>, Jeanette E. Eckel-Passow<sup>5</sup>, Daniel H. Lachance<sup>7</sup>, Jennifer Clarke<sup>3</sup>, Jennie W. Taylor<sup>3</sup>, Tracy Luks<sup>8</sup>, John K. Wiencke<sup>3,9</sup>, Robert B. Jenkins RB<sup>6,10</sup>, and Margaret R Wrensch<sup>3,9,10</sup>

<sup>1</sup>Department of Pathology, University of California, San Francisco, San Francisco, CA, USA

<sup>2</sup>Department of Anatomic Pathology, San Francisco Veterans Affairs Medical Center, San Francisco, CA, USA

<sup>3</sup>Department of Neurological Surgery, University of California, San Francisco, San Francisco, CA, USA

<sup>4</sup>Department of Epidemiology and Biostatistics, University of California, San Francisco, San Francisco, CA, USA

<sup>5</sup>Department of Health Sciences Research, Mayo Clinic, Rochester, MN, USA

<sup>6</sup>Department of Laboratory Medicine and Pathology, Mayo Clinic, Rochester, MN, USA

<sup>7</sup>Department of Neurology, Mayo Clinic, Rochester, MN, USA

<sup>8</sup>Department of Radiology, University of California, San Francisco, San Francisco, CA, USA

<sup>9</sup>Institute of Human Genetics, University of California, San Francisco, San Francisco, CA, USA

### Abstract

The “integrated diagnosis” for infiltrating gliomas in the 2016 revised World Health Organization (WHO) classification of tumors of the central nervous system requires assessment of the tumor for *IDH* mutations and 1p/19q codeletion. Since *TERT* promoter mutations and ATRX alterations have been shown to be associated with prognosis, we analyzed whether these tumor markers provide additional prognostic information within each of the five WHO 2016 categories. We used

**CORRESPONDING AUTHOR:** Melike Pekmezci, MD, Department of Pathology, Box 0102, 505 Parnassus Avenue, Room M-551, San Francisco, CA 94143, melike.pekmezci@ucsf.edu.

<sup>10</sup>Drs. Jenkins and Wrensch contributed equally to this publication.

### CONFLICT OF INTEREST

The authors declare that they have no conflict of interest.

### ETHICAL APPROVAL

All procedures performed were in accordance with the ethical standards of the institutional and/or national research committee and with the 1964 Helsinki declaration and its later amendments or comparable ethical standards.

### INFORMED CONSENT

Informed consent was obtained from all individual participants included in this study.

data for 1206 patients from the UCSF Adult Glioma Study, the Mayo Clinic and The Cancer Genome Atlas (TCGA) with infiltrative glioma, grades II–IV for whom tumor status for *IDH*, 1p/19q codeletion, *ATRX*, and *TERT* had been determined. All cases were assigned to one of 5 groups following the WHO 2016 diagnostic criteria based on their morphologic features, and *IDH* and 1p/19q codeletion status. These groups are: 1-Oligodendroglioma, *IDH*-mutant and 1p/19q-codeleted; 2- Astrocytoma, *IDH*-mutant; 3- Glioblastoma, *IDH*-mutant; 4- Glioblastoma, *IDH*-wildtype; and 5-Astrocytoma, *IDH*-wildtype. Within each group, we used univariate and multivariate Cox proportional hazards models to assess associations of overall survival with patient age at diagnosis, grade, and *ATRX* alteration status and/or *TERT* promoter mutation status. Among Group 1 *IDH*-mutant 1p/19q-codeleted oligodendrogliomas, the *TERT*-WT group had significantly worse overall survival than the *TERT*-MUT group (HR: 2.72, 95% CI: 1.05–7.04,  $p=0.04$ ). In both Group 2, *IDH*-mutant astrocytomas and Group 3, *IDH*-mutant glioblastomas, neither *TERT* mutations nor *ATRX* alterations were significantly associated with survival. Among Group 4, *IDH*-wildtype glioblastomas, *ATRX* alterations were associated with favorable outcomes (HR: 0.36, 95% CI: 0.17–0.81,  $p=0.01$ ). Among Group 5, *IDH*-wildtype astrocytomas, the *TERT*-WT group had significantly better overall survival than the *TERT*-MUT group (HR: 0.48, 95% CI: 0.27–0.87),  $p=0.02$ ). Thus, we present evidence that in certain WHO 2016 diagnostic groups, testing for *TERT* promoter mutations or *ATRX* alterations may provide additional useful prognostic information.

## Keywords

Glioma classification; *ATRX* alteration; *TERT* promoter mutation; brain tumor prognosis; telomere maintenance

## INTRODUCTION

A large body of literature indicates that certain glioma molecular alterations define subgroups that are prognostic and can be used in the clinical management of infiltrating glioma patients. Two molecular alterations that have well-established associations with prognosis are *isocitrate dehydrogenase (IDH)* mutations and 1p/19q-codeletions [6]. Because these two markers separated gliomas into more biologically distinct entities than histological classification alone, the World Health Organization (WHO) incorporated *IDH* mutation and 1p/19q codeletion into an “integrated diagnosis” in the 2016 revised 4<sup>th</sup> edition of the classification of tumors of the central nervous system [15].

Alterations in two telomere maintenance-related genes, *telomerase reverse transcriptase (TERT)* and *Alpha Thalassemia/Mental Retardation Syndrome X-Linked (ATRX)* have also been the subject of many investigations into glioma classification and prognosis. Telomeres, the nucleoprotein complexes at the ends of all eukaryotic chromosomes, are composed of several hundred nucleotide repeats which progressively shorten with each mitosis. Telomerase is a reverse transcriptase that carries its own RNA molecule used as a template to add nucleotides to telomeres. Tumors maintain their telomere length either via re-activation of telomerase or through telomerase-independent mechanisms collectively called alternative lengthening of telomeres (ALT). Hotspot mutations in the *TERT* promoter lead to

increased telomerase activity and are found in gliomas and many other tumors [11]. *TERT* promoter mutations occur in 70–83% of glioblastomas, 74–78% of oligodendrogliomas, 25–50% of oligoastrocytomas and 10–25% of astrocytomas [1, 6, 11]. Many cancers with ALT harbor mutations in *ATRX* or *death-domain associated protein (DAXX)* genes encoding ATRX and DAXX proteins, which are central components of the chromatin remodeling complex required for the incorporation of H3.3 histone proteins into telomeres [8–10]. *ATRX* mutations occur in nearly 75% of grade II–III astrocytomas and secondary glioblastomas [9, 10, 13]. *ATRX* mutations are widely distributed across the gene and are mostly truncating (including frameshift and nonsense variants) and less commonly missense mutations [8–10]. Loss of ATRX protein expression on immunohistochemistry (IHC) can be used as a surrogate marker of *ATRX* mutations with high sensitivity and specificity and is near perfectly correlated with ALT pathway activation [8–10]. In some glioma subgroups ATRX alterations and *TERT* promoter mutations may be mutually exclusive, likely due to functional redundancy. Over 90% of *IDH*-mutant diffuse gliomas have mutations in one or both genes [3, 6].

Alterations in *TERT* and *ATRX* are not only associated with certain histologic subgroups of gliomas, but also are associated with variable prognosis [3, 6, 12, 16, 21, 26, 28]. Our research team previously showed that molecular classification of gliomas based on *IDH*, *TERT* promoter mutations and 1p/19q codeletion status yields five subgroups that are independently associated with prognosis in grade II and III gliomas [6]. A similar classification of grade II and III infiltrating gliomas using only *IDH* and *TERT* promoter mutation status was also suggested [28]. Other groups demonstrated a role for ATRX in the classification of gliomas [12, 16]. Data from The Cancer Genome Atlas (TCGA) suggest lower grade gliomas (WHO grades II and III) can be grouped using *IDH* and *p53* mutation and 1p/19q codeletion status; ATRX inactivation differs significantly among these groups [3]. Others showed that *IDH*, 1p/19q and ATRX can be used in clinical classification [21].

The literature regarding glioma telomere maintenance mechanisms has been rapidly growing. Their prognostic and predictive roles are of great interest and may guide clinical management of glioma patients. As of yet, there are no studies specifically analyzing the distribution and importance of ATRX alterations and *TERT* promoter mutations among diagnostic entities in the WHO 2016 classification. The purpose of this study is to evaluate the distribution of ATRX alterations and *TERT* promoter mutations among each of the five major WHO 2016 diagnostic categories of infiltrating glioma, and to analyze whether either or both of these two markers provide additional prognostic information in each category.

## MATERIAL AND METHODS

### Study population

We included all patients with infiltrative glioma, grades II, III, and IV from the archives of the University of California, San Francisco (UCSF) Adult Glioma Study (AGS), the Mayo Clinic glioma case-control study and The Cancer Genome Atlas (TCGA) for whom tumor status for *IDH* mutations, 1p/19q codeletion, ATRX alterations, and *TERT* promoter mutations had been determined. All TCGA cases in this current study were previously included in Ceccarelli et al.[3], and all Mayo Clinic cases and 216 of 347 UCSF cases were

previously included in Eckel-Passow et al. [6]. Because cases in this current study were not population based, the percent distributions of the glioma diagnostic groups will not be representative of the general population. In particular, grade II/III patients are over-represented in this study.

### Assessment of histology and molecular features

Two pathologists (TT and CG) reviewed histologic sections for UCSF AGS and Mayo Clinic cases as previously described [6, 27]. Pathology data for TCGA cases were obtained from Supplemental Table S1 in Ceccarelli et al. [3]. For UCSF AGS and Mayo Clinic cases, 5-micron sections obtained from routinely processed formalin-fixed paraffin embedded (FFPE) tissue were used for IHC and FISH, and DNA extracted from the FFPE tissue using standard methods was used for sequencing. Status of all molecular alterations for the TCGA cases presented here was obtained from Ceccarelli et al.[3].

**IDH1 and IDH2 mutation**—*IDH* mutation status for UCSF AGS cases was evaluated by Sanger sequencing of *IDH1* and *IDH2* genes or by IHC (*IDH*R132H, H09, Dianova GmbH, Hamburg, Germany) using standard techniques [6]. Data solely from IHC results were used only when the IHC staining was positive for the presence of mutation; negative IHC results were validated by sequencing. *IDH* mutation status for all Mayo Clinic and TCGA cases was assessed via Sanger sequencing. *IDH* mutation denotes either an *IDH1* or *IDH2* mutation in the tumor [3, 6].

**ATRX mutation or loss of expression**—*ATRX* alterations for UCSF AGS cases were assessed by IHC (HPA001906, Sigma Aldrich, St. Louis, MO) performed at the UCSF Brain Tumor Research Center using previously-published methods [8]. Briefly, loss of nuclear staining in the majority of the tumor cells in the presence of an internal positive control was interpreted as loss of *ATRX* expression [6]. IHC for Mayo Clinic cases was performed at the Memorial Sloan-Kettering Cancer Center or at the Mayo Clinic using the same methods and interpreted by the same criteria [6]. *ATRX* data for TCGA cases reflected sequencing-based somatic mutations as described in Ceccarelli et al. [3]. *ATRX*-mutant (*ATRX*-MUT) denotes loss of *ATRX* expression for UCSF AGS and Mayo Clinic cases, and presence of any exonic mutation for TCGA cases. *ATRX*-wildtype (*ATRX*-WT) denotes retained nuclear expression of *ATRX* for UCSF AGS and Mayo Clinic cases and wildtype *ATRX* for TCGA cases.

**1p/19q codeletion**—1p/19q codeletion for UCSF AGS cases was assessed using clinical FISH assays. Tumors with 1p/19q codeletion almost invariably have *IDH* and *TERT* promoter mutations and 1p/19q codeletion is almost mutually exclusive with *ATRX* mutations. Therefore, *IDH*-wild type gliomas and *IDH*-mutant gliomas with *ATRX* alterations were not tested for 1p/19q codeletion unless it was previously performed for clinical reasons. These tumors were classified as 1p/19q-intact for the purposes of this study. 1p/19q codeletion status was assessed in all Mayo Clinic cases either by FISH as a clinical test or by array comparative genomic hybridization (aCGH) using an Agilent custom 8×60K array. 1p/19q codeletion status for the TCGA cases was obtained from Supplemental Table S1 in Ceccarelli et al. [3].

***TERT* promoter mutation**—*TERT* promoter mutation status for UCSF AGS and the Mayo Clinic cases was assessed by a previously published method [6] using a 2-step PCR and Sanger sequencing of a 244 base pair segment of *TERT* promoter region spanning the C228T and C250T mutations to assign cases as *TERT*-mutant (*TERT*-MUT) or *TERT*-wildtype (*TERT*-WT). For UCSF AGS cases, mutation calls were independently made by two reviewers (MP, HMH), and a consensus call was used for discrepant results. At the Mayo Clinic, cases were re-reviewed if the results from two pathologists were ambiguous, and a consensus call was used for discrepant results. For the TCGA cases, *TERT* promoter mutation status was obtained from sequencing data if available and expression data if sequencing data was not available [3].

### Study groups

All cases were assigned to one of five study groups following the WHO 2016 diagnostic criteria based on their morphologic features and *IDH* and 1p/19q codeletion status [14]. These groups are: 1-Oligodendroglioma, *IDH*-mutant and 1p/19q-codeleted, including WHO grades II and III; 2- Astrocytoma, *IDH*-mutant, including WHO grades II and III; 3- Glioblastoma, *IDH*-mutant; 4- Glioblastoma, *IDH*-wildtype; and 5- Astrocytoma, *IDH*-wildtype, including both morphologic oligodendroglioma and astrocytoma and both WHO grades II and III. A subset of cases, originally diagnosed as anaplastic oligodendroglioma or anaplastic oligoastrocytoma, showing *IDH* mutations but not 1p/19q codeletion or lacking *IDH* mutations, were re-reviewed and appropriately reclassified according to the WHO 2016 diagnostic criteria as either astrocytoma or glioblastoma based on the absence/presence of microvascular proliferation and/or necrosis.

### Statistical Methods

Differences in age at diagnosis by histologic grade and molecular alterations in each WHO 2016 group were evaluated and compared using the Kruskal-Wallis test. Within each group, separate Cox proportional hazards univariate models were used to determine whether *ATRX* alterations and *TERT* promoter status were associated with overall survival. When appropriate, based on the fit of the model, multivariate models within each group included adjustment or stratification for age at diagnosis and histologic grade. In order to assess the independent effects of *TERT* and *ATRX* status within each group, we present separate multivariate models for each group that includes both *TERT* and *ATRX* status whether or not each was statistically significant in the corresponding univariate model. All models were tested for assumptions and stratification was used if proportionality assumptions were violated. For the three groups in which stratification by age was necessary (Groups 1, 4 and 5), we determined the best age groupings by examining hazard ratios for each decile of age at diagnosis and grouping deciles with similar hazard ratios. The resulting age strata cut points are listed below each table in which results from models with age stratification are presented. *ATRX* alteration status and *TERT* promoter mutation status were included in each model along with an interaction term whenever applicable; since none of the interactions were statistically significant, we do not present the interaction results. Hazard ratios and confidence intervals were calculated for all models; the referent group used for each categorical variable (grade, *TERT* or *ATRX* status) was that with the largest frequency. A *p* value less than 0.05 was considered statistically significant. Survival curves stratified by



either *TERT* or *ATRX* status are generated from Cox proportional hazards models with adjustment for age and/or grade as appropriate. All analyses were conducted in R version 3.3.0 [20]. Among relevant clinical and treatment variables (i.e. extent of resection, performance status, chemotherapy type, and radiation), the only variable that was consistently collected in all three data sources was radiation treatment (given versus not given). We included radiation history in secondary analyses of each of the multivariate models presented below and found that radiation treatment did not confound any of the multivariate results with respect to statistical significance of *TERT* or *ATRX* alterations (results not shown). Other clinically relevant molecular markers such as *MGMT* methylation and *TP53* mutation were also not available for a sufficient number of cases to assess their impact on the findings.

## RESULTS

Of 1208 glioma cases identified for these analyses, two cases with 1p/19q codeletion but without *IDH* mutations were not included in further analyses. Of the remaining 1206 cases, 347 were from the UCSF AGS, 296 were from the Mayo Clinic glioma study and 563 were from TCGA (Table 1). Data for the 643 UCSF and Mayo cases are provided as supplementary material (Supplementary Table 1). These 1206 study cases were assigned to the WHO 2016 groups as follows: Group 1-Oligodendroglioma, *IDH*-mutant and 1p/19q-codeleted (n=291), Group 2- Astrocytoma, *IDH*-mutant (n=401), Group 3- Glioblastoma, *IDH*-mutant (n=51), Group 4- Glioblastoma, *IDH*-wildtype (n=309), and Group 5- Astrocytoma, *IDH*-wildtype (n=154). Age, median survival, *TERT* and *ATRX* status and other characteristics of each group are also shown in Table 1. Univariate survival statistics assessing the entire study population showed distinct survival curves for groups 1 through 4 corresponding to most favorable through least favorable survival outcomes (Figure 1); Group 5 astrocytoma, *IDH*-wildtype patients had intermediate survival between Group 3 *IDH*-mutant glioblastoma and Group 4 *IDH*-wildtype glioblastoma for approximately six years after diagnosis, after which, survival is more similar to Group 3 patients.

### Group1 - Oligodendroglioma, *IDH*-mutant and 1p/19q-codeleted

Group 1 included 173 grade II and 118 grade III gliomas per WHO 2016 grading criteria with a median age at diagnosis of 44 (range 20–75) years (Table 2). Patients with grade II tumors were significantly younger than those with grade III tumors (median ages 42 and 48, respectively, Kruskal-Wallis test  $p=0.006$ ). As shown in Table 1 and Figure 2a, almost all cases (n=273, 94%) had *TERT* promoter mutations only, five (1.7%) cases demonstrated both *TERT* and *ATRX* alterations, eleven (4%) had neither *TERT* nor *ATRX* alterations, and two had only *ATRX* alterations. In univariate analyses (Table 2), higher age at diagnosis, higher grade, and lack of *TERT* promoter mutation were significantly associated with decreased overall survival. In the final multivariate model which included grade, *TERT* and *ATRX* status and was stratified by age at diagnosis, neither grade nor *TERT* status were significantly associated with overall survival. (HR for grade: 1.61, 95%CI: 0.92–2.82,  $p=0.10$  HR for *TERT*: 2.46, 95%CI: 0.94–6.42,  $p=0.07$ ). However, in a multivariate model excluding grade, absence of *TERT* mutation was significantly associated with worse survival (HR: 2.72, 95% CI: 1.05–7.04,  $p=0.04$ ) (Table 2a and Figure 2a). With respect to age at

diagnosis, patients whose tumors that had *TERT* but did not have *ATRX* mutations (n=273, median age at diagnosis 44), did not significantly differ in age from those with tumors that had both *TERT* and *ATRX* mutations (n=5, median age at diagnosis 38) (Kruskal-Wallis test p=0.99) or from those patients with tumors that had neither *TERT* nor *ATRX* mutations (n=11, median age at diagnosis 46) (Kruskal-Wallis p=0.28). In a multivariate model controlling for grade and stratified by age, compared to cases with only *TERT* mutation, the cases with neither *TERT* nor *ATRX* alterations had significantly worse survival (HR: 2.61, 95% CI: 1.00–6.85, p=0.05). For nine of 13 *TERT*-wildtype tumors, we were able to confirm that the 1p/19q codeletions were indeed whole arm deletions (not partial arm deletions) by manual examination of tracings from genomic data, and of these one showed *ATRX* mutation by sequencing. The remaining four of the 13 *TERT*-wildtype tumors had 1p/19q codeletion tested by FISH, and none showed evidence of co-polysomy. Of these, three were *TP53*-wildtype, and one did not have *TP53* mutation data, but showed loss of *ATRX* expression by IHC.

### Group 2 - Astrocytoma, *IDH*-mutant (1p/19q-intact)

Group 2 included 220 grade II and 181 grade III gliomas per WHO 2016 grading criteria with a median age at diagnosis of 36 (range 18–73) years (Table 3). There was no difference between patients with grade II and grade III tumors for age at diagnosis (median age was 37 and 36 years respectively, p=0.60). As shown in Table 1 and Figure 2b, although most cases (n=311, 78%) had *ATRX* alterations only, seven (2%) cases had both *TERT* and *ATRX* alterations, 20 (5%) had *TERT* mutations only, and 63 (16%) had neither *TERT* nor *ATRX* alterations. In univariate analyses (Table 3), older age at diagnosis and higher grade were significantly associated with worse overall survival (HR for age: 1.02, 95% CI: 1.01–1.04, p=0.01; HR for grade: 1.45, 95% CI: 1.01–2.07, p=0.04), but neither *TERT* nor *ATRX* status was associated with survival. In a multivariate model including age, *TERT* and *ATRX* status, stratified by grade, only older age at diagnosis was significantly associated with worse overall survival (HR: 1.02, 95% CI: 1.01–1.04, p=0.009).

### Group 3 - Glioblastoma, *IDH*-mutant

Group 3 had 51 cases with median age at diagnosis of 38 (range 21–78) years (Table 4). Patients with tumors with *TERT* promoter mutations were significantly older than those with *TERT*-wildtype tumors (median ages 60 and 38, respectively, p=0.006). Patients with tumors that had *ATRX* alterations were younger at diagnosis than those who had *ATRX*-wildtype tumors (median ages 35 and 46 years, respectively, p=0.007). As shown in Table 1 and Figure 2c, the majority of the tumors in this group (n=32, 63%) had *ATRX* alterations only, three (6%) cases had both *TERT* and *ATRX* alterations, six (12%) had *TERT* mutations only, and 10 (20%) had neither *TERT* nor *ATRX* alterations. In univariate analyses, older age at diagnosis and presence of *TERT* promoter mutations were associated with worse overall survival. There was no significant association between *ATRX* status and survival (p=0.36). In a multivariate analysis including age, *TERT* status, and *ATRX* status, only older age remained significantly associated with shorter overall survival.



#### Group 4 - Glioblastoma, *IDH*-wildtype

Group 4 had 309 cases and a median age at diagnosis of 59 (range 24–89) years (Table 5). Patients with tumors that had *TERT* promoter mutations were older at diagnosis than those with *TERT*-wildtype tumors (median ages 62 and 52 years, respectively,  $p<0.001$ ). Patients who had tumors with *ATRX* alterations were younger than those who had tumors without *ATRX* alterations (median ages 38 and 60 years, respectively,  $p<0.001$ ). As shown in Table 1 and Figure 2d, although a large majority of cases ( $n=238$ , 77%) had only *TERT* promoter mutation, 60 (19%) cases had neither *TERT* promoter nor *ATRX* alterations, 10 (3%) cases had only *ATRX* mutations and one case had both *TERT* and *ATRX* mutations. In univariate analyses (Table 5), older age at diagnosis, presence of *TERT* mutation and absence of *ATRX* alteration were associated with worse overall survival ( $p<0.0001$ ,  $p=0.01$  and  $p=0.001$ , respectively, Table 5). In the multivariate model including *TERT* and *ATRX* status, and stratified for age, presence of *ATRX* alterations (but not *TERT* status) remained independently significantly associated with better survival ( $p=0.01$ , Table 5 and Figure 2d).

#### Group 5- Astrocytoma, *IDH*-wildtype

Group 5 included 42 (27%) grade II and 112 (73%) grade III gliomas and had a median age at diagnosis of 52 (range 18–87) years (Table 6). Patients with grade III tumors were significantly older at diagnosis than patients with grade II tumors (median ages 54 and 46 years, respectively,  $p=0.006$ ). As shown in Table 1 and Figure 2e, most cases in this group had only *TERT* promoter mutation ( $n=92$ , 60%), but 43 (28%) were wildtype for both *TERT* and *ATRX*, 16 (10%) had only *ATRX* alterations and 3 (2%) had both *TERT* and *ATRX* alterations. Patients with *TERT*-mutant tumors were significantly older at diagnosis than patients with *TERT*-wildtype tumors (median ages 56 and 37 years, respectively,  $p<0.001$ ) (Table 6). Patients who had tumors with *ATRX* alterations were significantly younger than patients who had tumors without *ATRX* alterations (median ages 38 and 53 years, respectively,  $p=0.006$ ). In univariate analyses (Table 6), older age at diagnosis, higher grade and presence of *TERT* promoter mutations were significantly associated with worse overall survival ( $p=0.0008$ ,  $0.03$ , and  $p=0.0003$ , respectively), while *ATRX* status was not associated with survival ( $p=0.41$ ). In the multivariate model including grade, *TERT* and *ATRX* status, and stratified for age, higher grade and presence of *TERT* mutations (but not *ATRX* status) continued to be independently associated with significantly worse survival (Table 6 and Figure 2e).

#### Summary

Figure 2 and Table 7 summarize the predominant telomere maintenance mechanism and which telomere maintenance mechanism alterations are associated with overall survival within WHO 2016 entities. *TERT* promoter mutation predominates in Group 1, *IDH*-mutant 1p/19q-codeleted tumors (96%), Group 4, glioblastoma, *IDH*-wildtype (77%), and Group 5, astrocytoma, *IDH*-wildtype (62%), while *ATRX* alterations predominate in Group 2, astrocytoma, *IDH*-mutant (79%) and Group 3, glioblastoma, *IDH*-mutant (69%). When *TERT* and *ATRX* alterations were modeled together, *TERT* promoter mutation was significantly associated with worse survival in *IDH*-wildtype astrocytomas (Group 5), while *TERT* mutation was significantly associated with better survival in *IDH*-mutant, 1p/19q-

codeleted oligodendrogliomas (Group 1). Among *IDH*-wildtype glioblastoma patients (Group 4), *ATRX* mutation was significantly associated with better survival. Neither *TERT* nor *ATRX* status was significantly associated with survival among *IDH*-mutant astrocytomas (Group 2) or *IDH*-mutant glioblastoma (Group 3).

## DISCUSSION

The revised 4<sup>th</sup> edition of WHO 2016 Classification of tumors of the central nervous system incorporated molecular classification with histology to provide an integrated diagnosis [14]. For diffuse gliomas other than midline gliomas with H3K27M mutations, *IDH* mutations and 1p/19q codeletion constitute the main components of the integrated WHO 2016 diagnosis. However, because our current knowledge about genetic and epigenetic alterations in gliomas extends beyond these two markers, the prognostic roles of additional markers within gliomas diagnosed according to the WHO 2016 criteria is warranted. Proposed molecular classifications in the literature commonly include some combination of *IDH*, 1p/19q codeletion and the tumor's telomere maintenance mechanism, defined by alterations in either *TERT* or *ATRX* (reviewed in [25]). To determine whether *TERT* or *ATRX* alteration status provide additional prognostic information, we analyzed their associations with overall survival in glioma patients classified according to the WHO 2016 criteria.

Upon review of the molecular and histologic features, we were able to classify nearly all study patients according to the new WHO 2016 criteria [14]. These groups demonstrated different survival outcomes with *IDH*-mutant, 1p/19q-codeleted, oligodendrogliomas (Group 1) having the most favorable results, followed by *IDH*-mutant astrocytomas (Group 2), *IDH*-mutant glioblastomas (Group 3), and *IDH*-wildtype glioblastomas (Group 4). The survival experience of *IDH*-wildtype astrocytomas (Group 5) was in between that of Groups 3 and 4 for about the first six years, and afterwards, was more similar to Group 3.

### Group 1: Oligodendroglioma, *IDH*-mutant and 1p/19q-codeleted

Consistent with the literature [1, 24], the predominant telomere maintenance mechanism in this group was *TERT* promoter mutation (96%). A subset (n=5) showed concurrent *TERT* and *ATRX* alteration, but was too small for further statistical evaluation. This group may represent either misclassified tumors due to imperfect specificity of *ATRX* for assessing ALT status or tumors that acquired *ATRX* mutations as a later event. Patients with tumors lacking *TERT* promoter mutation had worse survival. A possible explanation could be that these tumors have false positive 1p/19q codeletion results, which would have led to misclassification of these cases as prognostically favorable oligodendrogliomas. It is known that small deletions in 1p and 19q may result in false positive 1p/19q codeletion results as tested by FISH in the absence of whole arm deletions [5]. In addition, 1p/19q codeletion in this study included those with relative 1p/19q codeletion (deletions in 1p and 19q in the presence of polysomy), which was reported to be associated with worse overall prognosis [4]. However, these possibilities are low since the whole arm deletions were confirmed through manual examination of tracings in nine out of these 13 cases. Among the remaining four cases, three were *TP53*-wildtype, which argues against a false positive 1p/19q codeletion. One case with unknown *TP53* status had *ATRX* loss, which may be a concern

regarding misclassification of an astrocytoma. While a single case is not sufficient to make a generalized conclusion, it suggests that tumors with discordant ATRX and 1p19q deletion results may warrant further testing to establish a definitive diagnosis.

### Group 2- Astrocytoma, *IDH*-mutant (1p/19q-intact)

Among Group 2 *IDH*-mutant astrocytomas, significant prognostic indicators were age at diagnosis and grade in univariate models. Consistent with the literature [9, 10, 21, 24], the predominant telomere mechanism in Group 2 was ATRX alteration (79%). Given that rates of ATRX alterations are high in Group 2 *IDH*-mutant (1p/19q-intact) astrocytoma patients but rare in Group 1 *IDH*-mutant, 1p/19q-codeleted oligodendroglioma patients, ATRX status may be a useful diagnostic tool among *IDH*-mutant lower grade gliomas. However, 83 (21%) of all Group 2 *IDH*-mutant grade II and III gliomas lack both ATRX alterations and 1p/19q codeletion. Thus, the absence of ATRX alterations cannot be used as evidence for an *IDH*-mutant, 1p/19q-codeleted oligodendroglioma diagnosis without confirmation of 1p/19q codeletion. Previous studies reported frequent *TP53* mutations in *IDH*-mutant, 1p/19q-intact gliomas, which correlated with significant p53 staining on IHC [3]. As noted in the methods, we did not have sufficient data about *TP53* mutation status or p53 staining to examine this marker in the statistical analyses.

Whether ATRX status has a prognostic role among Group 2 *IDH*-mutant gliomas has been previously investigated. A prior study, which includes data that overlap with this study, suggested that among patients with *IDH*-mutant 1p/19q-intact lower grade gliomas, loss of ATRX expression may be associated with longer survival as compared to those with retained ATRX expression; however, the latter group was small (n=9) and there was poor statistical power [12]. Another study classifying gliomas into four subgroups as “*IDH*-mutant and 1p/19q-codeleted,” “*IDH*-mutant/ATRX-lost,” “*IDH*-mutant only,” and “*IDH*-wildtype” reported similar results; however, they did not provide a pairwise comparison between “*IDH*-mutant/ATRX-lost” and “*IDH*-mutant only” groups [16]. In addition, glioblastomas were included in the study and the final multivariate analysis with proposed groups did not include grade as a variable. In our study, neither *TERT* promoter mutation nor ATRX alterations were associated with overall survival in this group of astrocytoma, *IDH*-mutant patients. This suggests ATRX status may not have prognostic significance among *IDH*-mutant lower grade gliomas, beyond its almost mutually exclusive distribution with 1p/19q codeletion.

### Group 3- Glioblastoma, *IDH*-mutant

*IDH*-mutant glioblastomas represented a small group, and frequently carried ATRX alterations, which were not associated with survival. Presence of *TERT* promoter mutation was associated with unfavorable outcomes in a univariate model, but not after adjusting for age. The small subset of patients with *TERT*-mutant tumors was significantly older than those with *TERT*-wildtype tumors, which may partially explain the unfavorable outcome associated with *TERT* promoter mutations. Nevertheless, the number of *TERT*-mutant *IDH*-mutant glioblastomas was too small to make a generalized statement. Given that Sanger sequencing is accepted as the gold standard for assessment of *IDH* status with high specificity, it is unlikely that these cases represent misclassified *IDH*-wildtype primary

glioblastomas. Whether *TERT* promoter mutations represent additional molecular alterations during the progression of tumors in this group should be further studied. It should also be noted that 20% of *IDH*-mutant glioblastomas had neither *TERT* nor *ATRX* alterations and 6% had both, therefore; *ATRX* status cannot be used to infer *TERT* status in this group.

#### Group 4- Glioblastoma, *IDH*-wildtype

Consistent with the literature [1], most *IDH*-wildtype glioblastomas had *TERT* promoter mutations (77%). Only 4% of cases had *ATRX* alterations; these patients were younger at diagnosis and had significantly better overall survival, even in multivariate models stratified by age at diagnosis and controlling for radiation treatment. Assessment of *ATRX* status among *IDH*-wildtype glioblastomas is necessary to identify this group. Overall survival did not differ among those with or without *TERT* mutation. Furthermore, *TERT* promoter mutation status was not independently associated with overall survival in the multivariate models. Thus, clinical utility of routine *TERT* promoter mutation analysis among *IDH*-wildtype glioblastomas is unclear.

Previous studies demonstrated an interaction between the predictive role of MGMT methylation and *TERT* status in this group [2, 17]. One study showed that the prognostic influence of MGMT promoter methylation depended on the presence of *TERT* promoter mutations among *IDH*-mutant glioblastoma patients who were treated with standard chemoradiation [17]. Another study showed a significant interaction between *TERT* status and MGMT methylation status among *IDH*-wildtype glioblastoma patients treated with radiation and temozolamide, and proposed four subgroups [2]. However, they have only provided the hazard ratios without confidence intervals or p values to assess the significance of any of the pairwise associations. Unfortunately, our data regarding the MGMT methylation is limited to the TCGA cases only, which does not have sufficient power to perform a subgroup analysis. In addition, some of our cases were treated before the temozolamide era, and chemotherapy regimens in this current study are not well-defined precluding further assessment of “predictive” role of *TERT* mutations.

#### Group 5- Astrocytoma, *IDH*-wildtype

Among the astrocytoma, *IDH*-wildtype group, *TERT* promoter mutation was common, occurring in (62%) of patients. These patients were significantly older than those without *TERT* promoter mutation and had shorter overall survival, similar to our previous report using a dataset with significant overlap to that used here [6]. These gliomas most likely represent the difficulty in pathologic classification of under-sampled *IDH*-wildtype glioblastomas displaying intra-tumoral heterogeneity. Another possibility is that the tumor is in an early phase of evolution and not all histological features that are typically associated with high grade are present.

A subset of *IDH*-wildtype astrocytomas without *TERT* or *ATRX* alterations may correspond to those that share genetic and epigenetic features with pilocytic astrocytomas [3]. All patients in this dataset are “adults”, however, there is the possibility that there are “pediatric type” tumors, which we have not accounted for. For example, we cannot exclude the possibility that some of the *IDH*-wildtype astrocytomas indeed represent pediatric-type

oligodendrogliomas without *IDH* mutations or 1p/19q codeletion. Similarly, there may be an unaccounted for group of pediatric-type high grade astrocytomas among *IDH*-wildtype gliomas in groups 4 and 5. We do not have sufficient data regarding recurrent mutations in pediatric high grade tumors including those in the histone coding genes. H3 G34R (or less likely G34V) mutations exclusive to hemispheric gliomas, which are frequently seen in teenagers and young adults, and associated with favorable prognosis may correspond to a subset of *IDH*-wildtype astrocytomas with *ATRX* mutations in this study [23]. We have also not included one of the new diagnostic entities in 2016 WHO, “diffuse midline glioma, H3 K27M-mutant,” in our classification. These tumors may have been mixed among *IDH*-wildtype glioblastomas and astrocytomas. These tumors are expected to be *TERT*-wildtype and a subset may show *ATRX* mutations [5]. Future studies analyzing additional molecular alterations are necessary for further classification of *IDH*-wildtype infiltrating gliomas.

### Role of histologic grade

The criteria for histologic grading of diffuse gliomas are from the pre-*IDH* era, and do not account for the prognostic effects of the molecular classification. We found that among patients with *IDH*-mutant and 1p/19q-codeleted oligodendrogliomas, those with grade III tumors were older and had reduced overall survival. While several studies in the literature reported grade to be a significant predictor of outcome among oligodendrogliomas, they had not considered molecular features in their diagnosis [7, 18]. While Scheie *et al.* reported grade and 1p/19q status to be independent prognostic factors among cases with histologic oligodendroglial component, it was unclear whether grade was significant within the 1p/19q-codeleted group or if its significance was driven by cases with higher grade tumors including the no-longer recognized group of “glioblastoma with oligodendroglioma, grade IV” [22]. More recent studies reported that grade was not significantly associated with survival among *IDH*-mutant 1p/19q-codeleted oligodendrogliomas [19, 24]. Our results indicate that among molecularly defined oligodendrogliomas, grade was not significantly associated with overall survival in multivariate models. A caveat is that we did not include treatment data beyond radiation in our model. Furthermore, there is an inherent bias in almost all retrospective studies regarding the treatment given as part of standard of care, since chemotherapy with or without radiation treatment is usually reserved for patients with grade III tumors. Similar to our study, most studies in the literature are retrospective in nature and do not account for treatment variation. Additional studies including prospective randomized treatment data are warranted to further assess this issue.

Among patients with *IDH*-mutant astrocytomas, those with grade III tumors had worse outcomes than patients with grade II tumors. A similar association with grade and survival was also seen in patients with *IDH*-wildtype astrocytomas. Previous studies in the literature reported a significant survival difference between patients with grade II and grade III astrocytomas; however, the majority of these studies was done in the pre-*IDH* era and therefore may lack generalizability to modern patient cohorts [18]. More recently, among patients with tumors diagnosed with strict integrated molecular criteria, grade II and grade III astrocytomas did not show significant age or survival differences [21, 24]. Generalization of our results requires caution given our models do not control for concurrent clinical features such as extent of surgical resection, and lack consistent treatment (chemotherapy

and/or radiation) across both grades. Furthermore, it is unclear whether the current grading criteria will similarly hold up among *IDH*-mutant cases versus *IDH*-wildtype cases. Additional studies specifically examining the role of grading among astrocytomas are needed.

One weakness in this study is the lack of availability for consistently obtained treatment data within each diagnostic group. Owing to the use of three different data sources, the availability of these variables was limited. For example, extent of resection, one of the clinical parameters with known survival effect, was only available in the TCGA subset of lower grade tumors, while 95% of all glioblastoma cases were classified as resection, extent unknown. Similarly, Karnofsky performance status was only available for TCGA cases. Since our analyses are conducted within WHO 2016 diagnostic entities, further reducing the sample sizes by including only the TCGA subset led to insufficient power for an analysis controlling for any of these clinical parameters. Radiation treatment (as given versus not given) was the only treatment variable that was similarly categorized across various data sources. Secondary analyses including radiation in the final multivariate models showed that radiation did not confound any of the associations with *TERT* or *ATRX* status in any of the groups. Unfortunately, most retrospective studies, even those with treatment protocol data from a single institution suffer from this bias due to the changes in diagnostic criteria and treatment modalities over time. New prospective clinical trials with standard treatment protocols for diagnostic groups based on integrated diagnoses are essential and these results should be validated in an external dataset.

Our data for *ATRX* alterations came from either loss of protein expression tested by immunohistochemistry (UCSF AGS and Mayo Clinic), or from sequencing data (TCGA). While the frequency of *ATRX* alterations in TCGA data was somewhat lower, this may have been due to the different technique. It is generally accepted that protein expression and mutation data are highly correlated. But some missense mutations may not be associated with protein loss, and genetic and epigenetic alterations other than *ATRX* mutations may lead to loss of protein expression [8–10]. However, earlier studies suggested that loss of protein expression has better correlation with *ATRX* status than *ATRX* mutations [8]. It is unclear whether the loss of *ATRX* expression or the presence of *ATRX* gene mutations is the better prognostic indicator among glioma subtypes, and this topic needs further evaluation.

In summary, this study combines three large cohorts of adult glioma patients that have been successfully re-classified according to the new integrated diagnosis criteria in the revised 4<sup>th</sup> edition of the WHO 2016. We demonstrated that presence of *TERT* promoter mutation was associated with favorable outcomes among Group 1 *IDH*-mutant 1p/19q-codeleted oligodendrogliomas, and with unfavorable outcomes among Group 5 *IDH*-wildtype astrocytomas. Presence of *ATRX* alterations was independently associated with favorable outcomes among Group 4 *IDH*-wildtype glioblastomas. Thus, we present evidence that in certain subgroups, testing for *TERT* promoter mutation or *ATRX* alterations may have utility in the clinical management of glioma patients.



## Supplementary Material

Refer to Web version on PubMed Central for supplementary material.

## Acknowledgments

Work at University of California, San Francisco was supported by the National Institutes of Health (grant numbers R01CA52689, P50CA097257, R01CA126831, R01CA139020 and R25CA112355), as well as the loglio Collective, the National Brain Tumor Foundation, The Sontag Foundation, the Stanley D. Lewis and Virginia S. Lewis Endowed Chair in Brain Tumor Research, the Robert Magnin Newman Endowed Chair in Neuro-oncology, and by donations from families and friends of John Berardi, Helen Glaser, Elvera Olsen, Raymond E. Cooper, and William Martinusen.

Work at the Mayo Clinic was supported by the National Institutes of Health (grant numbers P50CA108961 and P30CA15083), National Institute of Neurological Disorders and Stroke (grant number RC1NS068222Z), the Bernie and Edith Waterman Foundation, and the Ting Tsung and Wei Fong Chao Family Foundation.

This publication was supported by the National Center for Research Resources and the National Center for Advancing Translational Sciences, National Institutes of Health, through UCSF-CTSI Grant Number UL1RR024131. Its contents are solely the responsibility of the authors and do not necessarily represent the official views of the NIH.

The collection of cancer incidence data used in this study was supported by the California Department of Public Health as part of the statewide cancer reporting program mandated by California Health and Safety Code Section 103885; the National Cancer Institute's Surveillance, Epidemiology and End Results Program under contract HHSN261201000140C awarded to the Cancer Prevention Institute of California, contract HHSN261201000035C awarded to the University of Southern California, and contract HHSN261201000034C awarded to the Public Health Institute; and the Centers for Disease Control and Prevention's National Program of Cancer Registries, under agreement # U58DP003862-01 awarded to the California Department of Public Health. The ideas and opinions expressed herein are those of the author(s) and endorsement by the State of California Department of Public Health, the National Cancer Institute, and the Centers for Disease Control and Prevention or their Contractors and Subcontractors is not intended nor should be inferred.

The results published here are in whole or part based upon data generated by The Cancer Genome Atlas managed by the NCI and NHGRI. Information about TCGA can be found at <http://cancergenome.nih.gov>

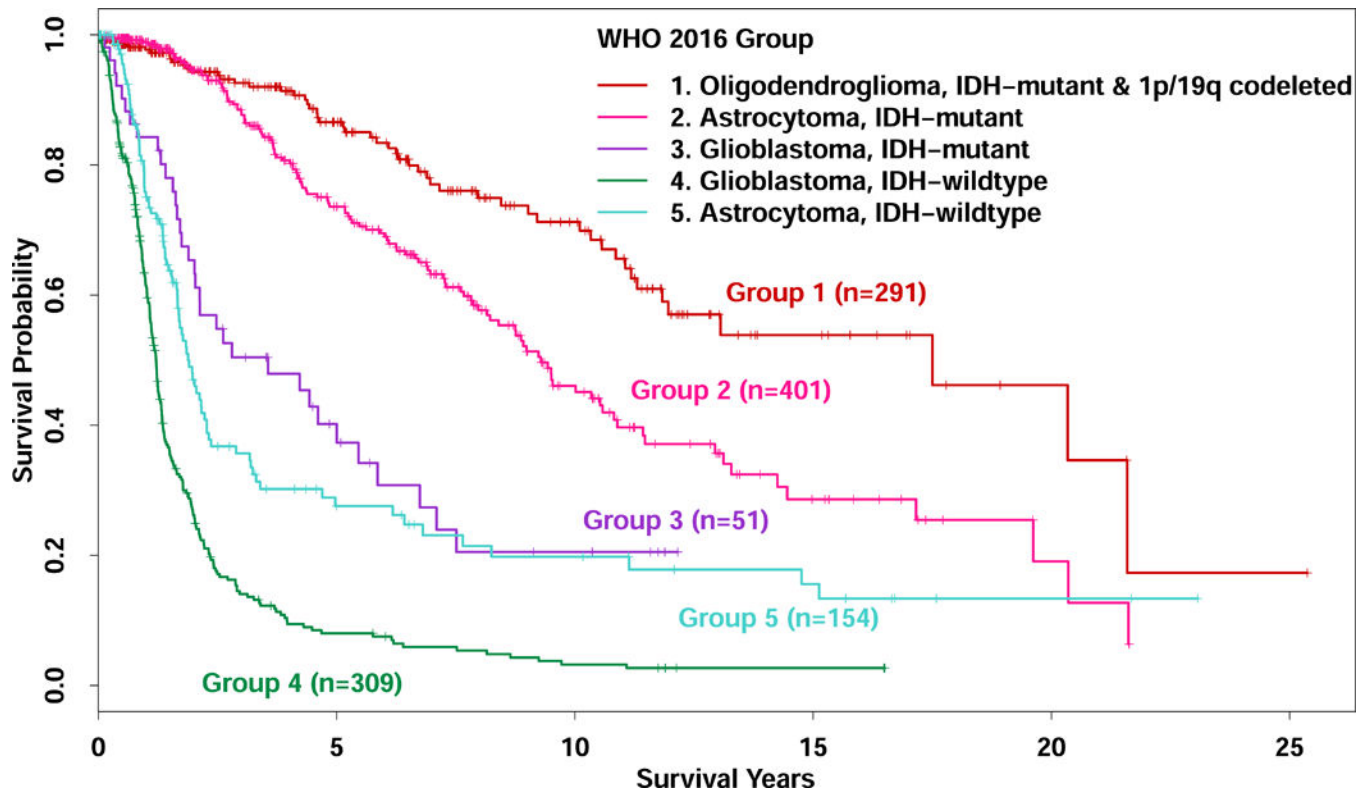
The authors wish to acknowledge study participants, the clinicians and research staff at the participating medical centers, the UCSF Helen Diller Family Comprehensive Cancer Center Genome Analysis Core which is supported by a National Cancer Institute Cancer Center Support Grant (5P30CA082103), the UCSF Cancer Registry, the UCSF Neurosurgery Tissue Bank, Katherine Cornelius, the late Dr. Bernd Scheithauer, the Mayo Clinic Center for Individualized Medicine, and the Mayo Clinic Comprehensive Cancer Center Biospecimens and Processing and Genotyping Shared Resources.

## References

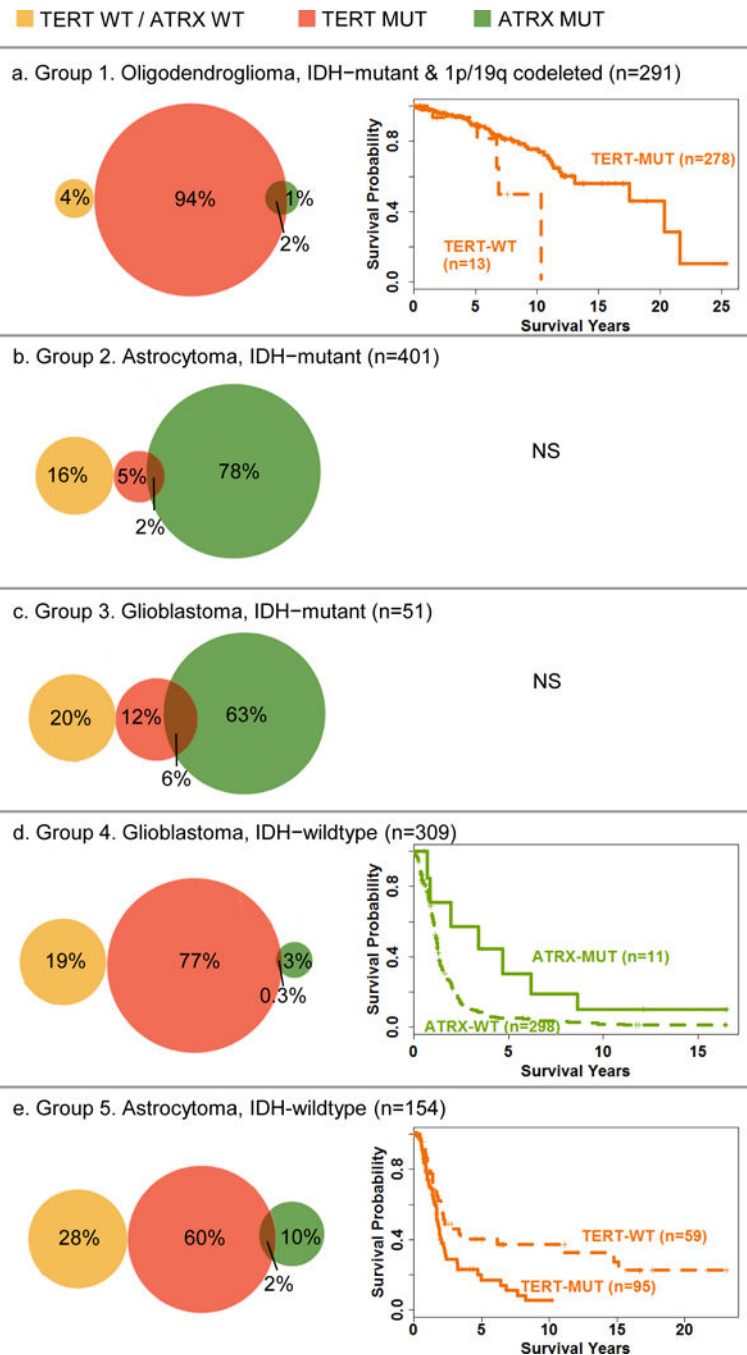
1. Arita H, Narita Y, Fukushima S, Tateishi K, Matsushita Y, Yoshida A, Miyakita Y, Ohno M, Collins VP, Kawahara N, et al. Upregulating mutations in the TERT promoter commonly occur in adult malignant gliomas and are strongly associated with total 1p19q loss. *Acta Neuropathol.* 2013; 126:267–276. DOI: 10.1007/s00401-013-1141-6 [PubMed: 23764841]
2. Arita H, Yamasaki K, Matsushita Y, Nakamura T, Shimokawa A, Takami H, Tanaka S, Mukasa A, Shirahata M, Shimizu S, et al. A combination of TERT promoter mutation and MGMT methylation status predicts clinically relevant subgroups of newly diagnosed glioblastomas. *Acta Neuropathol Commun.* 2016; 4:79.doi: 10.1186/s40478-016-0351-2 [PubMed: 27503138]
3. Ceccarelli M, Barthel FP, Malta TM, Sabedot TS, Salama SR, Murray BA, Morozova O, Newton Y, Radenbaugh A, Pagnotta SM, et al. Molecular Profiling Reveals Biologically Discrete Subsets and Pathways of Progression in Diffuse Glioma. *Cell.* 2016; 164:550–563. DOI: 10.1016/j.cell.2015.12.028 [PubMed: 26824661]
4. Chamberlain MC, Born D. Prognostic significance of relative 1p/19q codeletion in oligodendroglial tumors. *J Neurooncol.* 2015; 125:249–251. DOI: 10.1007/s11060-015-1906-y [PubMed: 26341371]

5. Clark KH, Villano JL, Nikiforova MN, Hamilton RL, Horbinski C. 1p/19q testing has no significance in the workup of glioblastomas. *Neuropathol Appl Neurobiol.* 2013; 39:706–717. DOI: 10.1111/nan.12031 [PubMed: 23363074]
6. Eckel-Passow JE, Lachance DH, Molinaro AM, Walsh KM, Decker PA, Sicotte H, Pekmezci M, Rice T, Kosel ML, Smirnov IV, et al. Glioma Groups Based on 1p/19q, IDH, and TERT Promoter Mutations in Tumors. *N Engl J Med.* 2015; 372:2499–2508. DOI: 10.1056/NEJMoa1407279 [PubMed: 26061753]
7. Giannini C, Scheithauer BW, Weaver AL, Burger PC, Kros JM, Mork S, Graeber MB, Bauserman S, Buckner JC, Burton J, et al. Oligodendrogliomas: reproducibility and prognostic value of histologic diagnosis and grading. *J Neuropathol Exp Neurol.* 2001; 60:248–262. [PubMed: 11245209]
8. Heaphy CM, de Wilde RF, Jiao Y, Klein AP, Edil BH, Shi C, Bettegowda C, Rodriguez FJ, Eberhart CG, Hebbar S, et al. Altered telomeres in tumors with ATRX and DAXX mutations. *Science.* 2011; 333:425.doi: 10.1126/science.1207313 [PubMed: 21719641]
9. Jiao Y, Killela PJ, Reitman ZJ, Rasheed AB, Heaphy CM, de Wilde RF, Rodriguez FJ, Rosenberg S, Oba-Shinjo SM, Nagahashi Marie SK, et al. Frequent ATRX, CIC, FUBP1 and IDH1 mutations refine the classification of malignant gliomas. *Oncotarget.* 2012; 3:709–722. DOI: 10.18632/oncotarget.588 [PubMed: 22869205]
10. Kannan K, Inagaki A, Silber J, Gorovets D, Zhang J, Kastenhuber ER, Heguy A, Petrini JH, Chan TA, Huse JT. Whole-exome sequencing identifies ATRX mutation as a key molecular determinant in lower-grade glioma. *Oncotarget.* 2012; 3:1194–1203. DOI: 10.18632/oncotarget.689 [PubMed: 23104868]
11. Killela PJ, Reitman ZJ, Jiao Y, Bettegowda C, Agrawal N, Diaz LA Jr, Friedman AH, Friedman H, Gallia GL, Giovannella BC, et al. TERT promoter mutations occur frequently in gliomas and a subset of tumors derived from cells with low rates of self-renewal. *Proc Natl Acad Sci U S A.* 2013; 110:6021–6026. DOI: 10.1073/pnas.1303607110 [PubMed: 23530248]
12. Leeper HE, Caron AA, Decker PA, Jenkins RB, Lachance DH, Giannini C. IDH mutation, 1p19q codeletion and ATRX loss in WHO grade II gliomas. *Oncotarget.* 2015; 6:30295–30305. DOI: 10.18632/oncotarget.4497 [PubMed: 26210286]
13. Liu XY, Gerges N, Korshunov A, Sabha N, Khuong-Quang DA, Fontebasso AM, Fleming A, Hadjadj D, Schwartzentruber J, Majewski J, et al. Frequent ATRX mutations and loss of expression in adult diffuse astrocytic tumors carrying IDH1/IDH2 and TP53 mutations. *Acta Neuropathol.* 2012; 124:615–625. DOI: 10.1007/s00401-012-1031-3 [PubMed: 22886134]
14. Louis, DN., Ohgaki, H., Wiestler, OD., Cavenee, WK. WHO Classification of Tumours of the Central Nervous System. International Agency for Research on Cancer, City; 2016.
15. Louis DN, Perry A, Reifenberger G, von Deimling A, Figarella-Branger D, Cavenee WK, Ohgaki H, Wiestler OD, Kleihues P, Ellison DW. The 2016 World Health Organization Classification of Tumors of the Central Nervous System: a summary. *Acta Neuropathol.* 2016; 131:803–820. DOI: 10.1007/s00401-016-1545-1 [PubMed: 27157931]
16. Mur P, Mollejo M, Hernandez-Iglesias T, de Lope AR, Castresana JS, Garcia JF, Fiano C, Ribalta T, Rey JA, Melendez B. Molecular classification defines 4 prognostically distinct glioma groups irrespective of diagnosis and grade. *J Neuropathol Exp Neurol.* 2015; 74:241–249. DOI: 10.1097/nen.000000000000167 [PubMed: 25668564]
17. Nguyen HN, Lie A, Li T, Chowdhury R, Liu F, Ozer B, Wei B, Green RM, Ellingson BM, Wang HJ, et al. Human TERT promoter mutation enables survival advantage from MGMT promoter methylation in IDH1 wild-type primary glioblastoma treated by standard chemoradiotherapy. *Neuro Oncol.* 2016; doi: 10.1093/neuonc/now189
18. Ohgaki H, Kleihues P. Population-based studies on incidence, survival rates, and genetic alterations in astrocytic and oligodendroglial gliomas. *J Neuropathol Exp Neurol.* 2005; 64:479–489. [PubMed: 15977639]
19. Olar A, Sulman EP. Molecular Markers in Low-Grade Glioma-Toward Tumor Reclassification. *Semin Radiat Oncol.* 2015; 25:155–163. DOI: 10.1016/j.semradonc.2015.02.006 [PubMed: 26050585]
20. R Core Team. R: A language and environment for statistical computing. R Foundation for Statistical Computing, City; 2016.

21. Reuss DE, Mamatjan Y, Schrimpf D, Capper D, Hovestadt V, Kratz A, Sahm F, Koelsche C, Korshunov A, Olar A, et al. IDH mutant diffuse and anaplastic astrocytomas have similar age at presentation and little difference in survival: a grading problem for WHO. *Acta Neuropathol.* 2015; 129:867–873. DOI: 10.1007/s00401-015-1438-8 [PubMed: 25962792]
22. Scheie D, Meling TR, Cvancarova M, Skullerud K, Mork S, Lote K, Eide TJ, Helseth E, Beiske K. Prognostic variables in oligodendroglial tumors: a single-institution study of 95 cases. *Neuro Oncol.* 2011; 13:1225–1233. DOI: 10.1093/neuonc/nor114 [PubMed: 21856683]
23. Schwartzentruber J, Korshunov A, Liu XY, Jones DT, Pfaff E, Jacob K, Sturm D, Fontebasso AM, Quang DA, Tonjes M, et al. Driver mutations in histone H3.3 and chromatin remodelling genes in paediatric glioblastoma. *Nature.* 2012; 482:226–231. DOI: 10.1038/nature10833 [PubMed: 22286061]
24. Suzuki H, Aoki K, Chiba K, Sato Y, Shiozawa Y, Shiraishi Y, Shimamura T, Niida A, Motomura K, Ohka F, et al. Mutational landscape and clonal architecture in grade II and III gliomas. *Nat Genet.* 2015; 47:458–468. DOI: 10.1038/ng.3273 [PubMed: 25848751]
25. Walsh KM, Wiencke JK, Lachance DH, Wiemels JL, Molinaro AM, Eckel-Passow JE, Jenkins RB, Wrensch MR. Telomere maintenance and the etiology of adult glioma. *Neuro Oncol.* 2015; 17:1445–1452. DOI: 10.1093/neuonc/nov082 [PubMed: 26014050]
26. Wiestler B, Capper D, Holland-Letz T, Korshunov A, von Deimling A, Pfister SM, Platten M, Weller M, Wick W. ATRX loss refines the classification of anaplastic gliomas and identifies a subgroup of IDH mutant astrocytic tumors with better prognosis. *Acta Neuropathol.* 2013; 126:443–451. DOI: 10.1007/s00401-013-1156-z [PubMed: 23904111]
27. Wrensch M, Jenkins RB, Chang JS, Yeh RF, Xiao Y, Decker PA, Ballman KV, Berger M, Buckner JC, Chang S, et al. Variants in the CDKN2B and RTEL1 regions are associated with high-grade glioma susceptibility. *Nat Genet.* 2009; 41:905–908. DOI: 10.1038/ng.408 [PubMed: 19578366]
28. Yang P, Cai J, Yan W, Zhang W, Wang Y, Chen B, Li G, Li S, Wu C, Yao K, et al. Classification based on mutations of TERT promoter and IDH characterizes subtypes in grade II/III gliomas. *Neuro Oncol.* 2016; 18:1099–1108. DOI: 10.1093/neuonc/now021 [PubMed: 26957363]



**Fig. 1.**  
Kaplan-Meier survival curves for glioma cases classified into five WHO 2016 entities.  
(n=1206)

**Fig. 2.**

Venn diagrams showing the distribution of *TERT*/*ATRX* status by WHO 2016 groups and age (and grade when appropriate) adjusted Cox survival curves for WHO 2016 groups that have a statistically significant association of *TERT* or *ATRX* with survival in multivariate models. Vertical lines on survival curves indicated censored observations. NS=No statistically significant associations for survival were found for *TERT* or *ATRX* in

multivariate models. Note that some percents add up to more than 100 due to rounding errors.

Author Manuscript

Author Manuscript

Author Manuscript

Author Manuscript



**Table 1**

Demographics, survival, study site and combined *TERT*/*ATRX* status by integrated 2016 WHO glioma entities.

2016 WHO Group						
	Group 1 ligodendrogloma, <i>IDH</i> - mutant and 1p/19q- codeleted					
	All	Group 2 Astrocytoma, <i>IDH</i> -mutant	Group 3 Glioblastoma, <i>IDH</i> -mutant	Group 4 Glioblastoma, <i>IDH</i> -wildtype	Group 5 Astrocytoma, <i>IDH</i> -wildtype	
Total	1206	291	401	51	309	154
Age mean (median)	47 (46)	45 (44)	38 (36)	42 (38)	59 (59)	50 (52)
Male gender n (%)	722 (60%)	167 (57%)	243 (61%)	36 (71%)	192 (62%)	84 (55%)
Percent deceased	45%	19%	30%	67%	81%	57%
Median survival (years)	5.3	17.5	9.3	3.6	1.2	1.9
Study Site						
UCSF	347 (29%)	86 (30%)	116 (29%)	17 (33%)	76 (25%)	52 (34%)
Mayo	296 (25%)	68 (23%)	87 (22%)	25 (49%)	97 (31%)	19 (12%)
TCGA	563 (47%)	137 (47%)	198 (49%)	9 (18%)	136 (44%)	83 (54%)
<i>TERT</i> / <i>ATRX</i>						
WT/WT	187 (16%)	11 (4%)	63 (16%)	10 (20%)	60 (19%)	43 (28%)
WT/MUT	371 (31%)	2 (1%)	311 (78%)	32 (63%)	10 (3%)	16 (10%)
MUT/WT	629 (52%)	273 (94%)	20 (5%)	6 (12%)	238 (77%)	92 (60%)
MUT/MUT	19 (2%)	5 (2%)	7 (2%)	3 (6%)	1 (0%)	3 (2%)
<i>TERT</i> -MUT n (column %)						
	648 (54%)	278 (96%)	27 (7%)	9 (18%)	239 (77%)	95 (62%)
<i>ATRX</i> -MUT <sup>a</sup> n (column %)						
	390 (32%)	7 (2%)	318 (79%)	35 (69%)	11 (4%)	19 (12%)

<sup>a</sup>UCSF and Mayo Clinic cases has *ATRX* alterations identified by immunohistochemistry while TCGA cases had *ATRX* alterations identified by sequencing. *ATRX* alterations were found in 36% of UCSF cases, 35% of Mayo cases and 28% of TCGA cases.

**Table 2**

Associations of age at diagnosis, tumor grade and *TERT* and *ATRX* status with overall survival in Group 1: *IDH*-mutant and 1p/19q-codeleted oligodendrogliomas.

	N (column %)	Age	Median (range)	Percent deceased	Median survival years (95% CI)	Univariate analysis			Multivariate analysis <sup>b</sup>		
						Hazard ratio	95% CI	p value	Hazard ratio	95% CI	p value
All/Age (continuous)	291 (100%)	44	(20–75)	19%	17.5 (11.8-NA)	1.08	(1.05–1.11)	<0.0001			
Grade II	173 (59%)	42	(20–74) <sup>a</sup>	16%	17.5 (13.1-NA)	Ref			Ref		
Grade III	118 (41%)	48	(22–75) <sup>a</sup>	22%	11.2 (8.5-NA)	2.00	(1.17–3.42)	0.01	1.61	(0.92–2.82)	0.10
<i>TERT</i> -WT	13 (4%)	46	(27–74)	38%	6.9 (5.1-NA)	3.25	(1.27–8.29)	0.01	2.46	(0.94–6.42)	0.07
<i>TERT</i> -MUT	278 (96%)	44	(20–75)	18%	17.5 (12-NA)	Ref			Ref		
<i>ATRX</i> -WT	284 (98%)	44	(20–75)	19%	17.5 (11.8-NA)	Ref			Ref		
<i>ATRX</i> -MUT	7 (2%)	46	(31–74)	14%	11.3 (11.1-NA)	0.69	(0.1–5.03)	0.72	0.57	(0.08–4.17)	0.58

<sup>a</sup>Patients with grade III tumors were significantly older at diagnosis than patients with grade II tumors (**p=0.006**).

<sup>b</sup>Multivariate model includes grade, *TERT* and *ATRX* status and was stratified by age (grouped as 20–37, 38–52, and 53–75) because age did not meet the Cox model's proportionality assumptions. In a multivariate model excluding grade, *TERT* status became statistically significant (**HR: 2.72, 95%CI: 1.05–7.04, p=0.04**) and *ATRX* status remained not significantly associated with survival (HR: 0.55, 95%CI: 0.08–4.07, p=0.56)

Bolded values are statistically significant; 95% CI: 95% confidence interval; Ref: reference group.

**Table 3**

Associations of age at diagnosis, *TERT* and *ATRX* status with overall survival in Group 2: *IDH*-mutant (1p/19q-intact) astrocytomas.

	N (column %)	Age Median (range)	Percent deceased	Median survival years (95% CI)	Univariate analysis			Multivariate analysis <sup>d</sup>		
					Hazard ratio	95% CI	p value	Hazard ratio	95% CI	p value
All/Age (continuous)	401 (100%)	36 (18–73)	30%	9.3 (8.2–10.8)	<b>1.02</b>	<b>(1.01–1.04)</b>	<b>0.01</b>	<b>1.02</b>	<b>(1.01–1.04)</b>	<b>0.009</b>
Grade II	220 (55%)	37 (18–73) <sup>a</sup>	29%	9.4 (8.7–12.9)	Ref					
Grade III	181 (45%)	36 (18–72) <sup>a</sup>	32%	8.9 (6.7–13.1)	<b>1.45</b>	<b>(1.01–2.07)</b>	<b>0.04</b>			
<i>TERT</i> -WT	374 (93%)	36 (18–73) <sup>b</sup>	30%	9.3 (8.2–10.8)	Ref			Ref		
<i>TERT</i> -MUT	27 (7%)	39 (20–66) <sup>b</sup>	30%	9 (7.6–NA)	0.75	(0.36–1.55)	0.43	0.68	(0.31–1.52)	0.35
<i>ATRX</i> -WT	83 (21%)	39 (20–69) <sup>c</sup>	19%	8.2 (5.3–NA)	1.09	(0.64–1.85)	0.76	1.18	(0.65–2.12)	0.59
<i>ATRX</i> -MUT	318 (79%)	35 (18–73) <sup>c</sup>	33%	9.4 (8.4–10.9)	Ref			Ref		

<sup>a</sup>Patients with grade II and III tumors had similar age at diagnosis (p= 0.60).

<sup>b</sup>Patients with *TERT*-mutant tumors were older at diagnosis than those with *TERT*-wildtype tumors (**p=0.007**).

<sup>c</sup>Patients with *ATRX*-mutant tumors were *younger* at diagnosis than those with *ATRX*-wildtype tumors (**p=0.0004**).

<sup>d</sup>Multivariate model includes age, *TERT* and *ATRX* status stratified by grade because it did not meet the proportionality assumption.

Bolded values are statistically significant; 95% CI: 95% confidence interval; Ref: reference group.

**Table 4**Associations of age at diagnosis, and tumor *TERT* and *ATRX* status with overall survival in Group 3: *IDH*-mutant glioblastomas

	N (column %)	Age Median (range)	Percent deceased	Median survival years (95% CI)	Univariate analysis			Multivariate analysis <sup>c</sup>		
					Hazard ratio	95% CI	p value	Hazard ratio	95% CI	p value
All/Age (continuous)	51 (100%)	38 (21–78)	67%	3.6 (2–5.9)	<b>1.05</b>	<b>(1.02–1.08)</b>	<b>0.002</b>	<b>1.04</b>	<b>(1.01–1.08)</b>	<b>0.01</b>
<i>TERT</i> -WT	42 (82%)	38 (21–63) <sup>a</sup>	62%	4.4 (2.5–7.5)	Ref			Ref		
<i>TERT</i> -MUT	9 (18%)	60 (33–78) <sup>a</sup>	89%	1.6 (0.8–NA)	<b>2.58</b>	<b>(1.14–5.83)</b>	<b>0.02</b>	1.81	(0.7–4.7)	0.22
<i>ATRX</i> -WT	16 (31%)	46 (23–78) <sup>b</sup>	69%	2 (1.2–NA)	1.40	(0.68–2.92)	0.36	0.78	(0.33–1.87)	0.58
<i>ATRX</i> -MUT	35 (69%)	35 (21–63) <sup>b</sup>	66%	3.6 (2.1–6.7)	Ref			Ref		

<sup>a</sup>Patients with *TERT*-mutant tumors were older at diagnosis than patients with *TERT*-wildtype tumors (**p=0.006**).<sup>b</sup>Patients with *ATRX*-mutant tumors were younger at diagnosis than patients with *ATRX*-wildtype tumors (**p=0.007**);<sup>c</sup>Multivariate model includes age, *TERT* and *ATRX* status. There was no significant interaction of *TERT* and *ATRX* status in this group. (p=0.36)

Bolded values are statistically significant; 95% CI: 95% confidence interval; Ref: reference group.

**Table 5**

Associations of age at diagnosis, and tumor *TERT* and *ATRX* status with overall survival in Group 4: *IDH*-wildtype glioblastomas.

	N (column %)	Age Median (range)	Percent deceased	Median survival years (95% CI)	Univariate analysis			Multivariate analysis <sup>c</sup>		
					Hazard ratio	95% CI	p value	Hazard ratio	95% CI	p value
All/Age (continuous)	309 (100%)	59 (24–89)	81%	1.2 (1.1–1.3)	<b>1.04</b>	<b>(1.02–1.05)</b>	<b>&lt;0.0001</b>			
<i>TERT</i> -WT	70 (23%)	52 (24–85) <sup>a</sup>	83%	1.8 (1.2–2.2)	<b>0.67</b>	<b>(0.5–0.91)</b>	<b>0.01</b>	0.90	(0.65–1.25)	0.53
<i>TERT</i> -MUT	239 (77%)	62 (30–89) <sup>a</sup>	80%	1.1 (1.1–1.2)	Ref			Ref		
<i>ATRX</i> -WT	298 (96%)	60 (24–89) <sup>b</sup>	81%	1.2 (1.1–1.3)	Ref			Ref		
<i>ATRX</i> -MUT	11 (4%)	38 (33–61) <sup>b</sup>	64%	4.7 (2–NA)	<b>0.29</b>	<b>(0.14–0.62)</b>	<b>0.001</b>	<b>0.36</b>	<b>(0.17–0.81)</b>	<b>0.01</b>

<sup>a</sup>Patients with *TERT*-mutant tumors were older at diagnosis than patients with *TERT*-wildtype tumors (**p<0.001**).

<sup>b</sup>Patients with *ATRX*-mutant tumors were younger at diagnosis than patients with *ATRX*-wildtype tumors (**p<0.001**).

<sup>c</sup>Multivariate model includes *TERT* and *ATRX* status and was stratified by age (grouped as 24–53, 54–70, and 71–89) because age did not meet the Cox model's proportionality assumptions.

In a model with *ATRX* alone, stratified by age at diagnosis, *ATRX* was significantly associated with survival better (hazard ratio: 0.35, 95% CI: 0.16–0.75, p value: 0.007)

Bolded values are statistically significant; 95% CI: 95% confidence interval; Ref: reference group.

**Table 6**

Associations of age at diagnosis, tumor grade, *TERT*, and *ATRX* status with survival in Group 5: *IDH*-wildtype astrocytomas.

	N (column %)	Age Median (range)	Percent deceased	Median survival years (95% CI)	Univariate analysis			Multivariate analysis <sup>d,e</sup>		
					Hazard ratio	95% CI	p value	Hazard ratio	95% CI	p value
All/Age (continuous)	154 (100%)	52 (18–87)	57%	1.9 (1.7–2.3)	<b>1.03</b>	<b>(1.01–1.04)</b>	<b>0.0008</b>			
Grade II	42 (27%)	46 (18–87) <sup>a</sup>	52%	3.4 (1.9–14.8)	Ref			Ref		
Grade III	112 (73%)	54 (23–75) <sup>a</sup>	59%	1.7 (1.4–2.2)	<b>1.69</b>	<b>(1.04–2.76)</b>	<b>0.03</b>	<b>1.72</b>	<b>(1.03–2.88)</b>	<b>0.04</b>
<i>TERT</i> -WT	59 (38%)	37 (18–75) <sup>b</sup>	47%	3.3 (2.1–NA)	<b>0.42</b>	<b>(0.26–0.67)</b>	<b>0.0003</b>	<b>0.48</b>	<b>(0.27–0.87)</b>	<b>0.02</b>
<i>TERT</i> -MUT	95 (62%)	56 (24–87) <sup>b</sup>	63%	1.7 (1.4–2)	Ref			Ref		
<i>ATRX</i> -WT	135 (88%)	53 (18–87) <sup>c</sup>	56%	1.9 (1.7–2.3)	Ref			Ref		
<i>ATRX</i> -MUT	19 (12%)	38 (23–70) <sup>c</sup>	68%	2.1 (1.4–NA)	0.78	(0.43–1.41)	0.41	0.96	(0.47–1.96)	0.91

<sup>a</sup>Patients with grade III tumors were older at diagnosis than patients with grade II tumors (p=0.006).

<sup>b</sup>Patients with *TERT*-mutant tumors were older at diagnosis than patients with *TERT*-wildtype tumors (p<0.001).

<sup>c</sup>Patients with *ATRX*-mutant tumors were younger at diagnosis than patients with *ATRX*-wildtype tumors (p=0.006).

<sup>d</sup>Multivariate model includes grade, *TERT* and *ATRX* status and was stratified by age (grouped as 18–36, 37–42, 43–56, 57–66, and 67–87) because age did not meet the Cox model's proportionality assumptions.

<sup>e</sup>In a model with grade and *TERT* (without *ATRX*) and stratified by age at diagnosis, *TERT* status was still significantly associated with survival (hazard ratio: 0.48, 95% CI: 0.27–0.85, **p value: 0.01**)

There was no statistically significant interaction between *TERT* and *ATRX* in this group (p=0.31)

Bolded values are statistically significant; 95% CI: 95% confidence interval; Ref: reference group.



Summary of predominant telomere maintenance mechanism and which telomere maintenance mechanisms are associated with overall survival within WHO 2016 glioma entities.

Table 7

	WHO 2016 Group				
	Group 1 Oligodendroglioma, <i>IDH</i> -mutant and 1p/ 19q-codeleted	Group 2 Astrocytoma, <i>IDH</i> -mutant	Group 3 Glioblastoma, <i>IDH</i> -mutant	Group 4 Glioblastoma, <i>IDH</i> -wildtype	Group 5 Astrocytoma, <i>IDH</i> -wildtype
Predominant telomere maintenance ( <i>TERT</i> promoter or <i>ATRX</i> alteration)	<i>TERT</i> (96%)	<i>ATRX</i> (79%)	<i>ATRX</i> (69%)	<i>TERT</i> (77%)	<i>TERT</i> (62%)
Tumor telomere maintenance alteration most relevant to prognosis	<i>TERT</i> :WT ↓ survival	Neither significant	Neither significant	<i>ATRX</i> :WT ↓ survival	<i>TERT</i> :MUT ↓ survival
Corresponding groups from Eckel-Passow et al. [6] based on presence or absence of <i>IDH</i> mutation, <i>TERT</i> promoter mutation, and 1p/19q codeletion.	Triple Positive	<i>IDH</i> -Mutant Only AND <i>IDH</i> + <i>TERT</i> -mutant	<i>IDH</i> -Mutant Only AND <i>IDH</i> + <i>TERT</i> -mutant	<i>TERT</i> -Mutant Only AND Triple Negative	<i>TERT</i> -Mutant Only AND Triple Negative