

KNOWLEDGE, ANALYSIS
AND INNOVATIVE METHODS
FOR THE STUDY AND THE DISSEMINATION
OF ANCIENT URBAN AREAS



Proceedings of the KAINUA 2017
International Conference in Honour
of Professor Giuseppe Sassatelli's 70th Birthday
(Bologna, 18-21 April 2017)

edited by
Simone Garagnani, Andrea Gucci

ARCHEOLOGIA E CALCOLATORI

28.2

2017

All'Insegna del Giglio

KNOWLEDGE, ANALYSIS
AND INNOVATIVE METHODS
FOR THE STUDY AND THE DISSEMINATION
OF ANCIENT URBAN AREAS



Proceedings of the KAINUA 2017
International Conference in Honour
of Professor Giuseppe Sassatelli's 70th Birthday
(Bologna, 18-21 April 2017)

edited by
Simone Garagnani, Andrea Gausci

ARCHEOLOGIA E CALCOLATORI

28.2

2017

All'Insegna del Giglio

Realizzazione grafica della sovracoperta di Marcello Bellisario
Rivista «Archeologia e Calcolatori» (ISSN 1120-6861, e-ISSN 2385-1953)
ISBN 978-88-7814-785-0, e-ISBN 978-88-7814-786-7
© 2017 – All’Insegna del Giglio s.a.s. – www.insegnadelgiglio.it
Firenze, dicembre 2017
Stampa, Andersen S.p.a.
Abbonamento: € 40,00. Spedizione: Italia, gratuita; estero, a carico del destinatario.

I dati forniti dai sottoscrittori degli abbonamenti vengono utilizzati esclusivamente per l’invio della pubblicazione e non vengono ceduti a terzi per alcun motivo.

TABLE OF CONTENTS

SIMONE GARAGNANI, ANDREA GAUCCI, ELISABETTA GOVI, <i>Ancient reality and contemporary research. An introduction to the Conference KAINUA 2017 and its Proceedings</i>	11
ANCIENT CITIES: PAST AND CURRENT PERSPECTIVES	
MARIO TORELLI, <i>From ruins to reconstruction: past and present</i>	27
PAOLA MOSCATI, <i>Archaeological computing and ancient cities: insights from the repository of «Archeologia e Calcolatori»</i>	47
KAINUA PROJECT	
GIOVANNANGELO CAMPOREALE†, <i>Sulla genesi della città nell'Italia preromana. Economia, sociologia, urbanistica: il caso dell'insediamento dell'Accesa</i>	69
ELISABETTA GOVI, <i>Kainua-Marzabotto: the archaeological framework</i>	87
ANDREA GAUCCI, <i>Kainua Project: principles, theoretical framework and archaeological analysis</i>	99
GIULIA MORPURGO, CHIARA PIZZIRANI, CHIARA MATTIOLI, <i>The craft settings in Kainua-Marzabotto: places and archaeological issues</i>	113
STEFANO SANTOCCHINI GERG, ENRICO ZAMPIERI, BOJANA GRUŠKA, GIACOMO MANCUSO, <i>Topographical survey and digital models</i>	129
SIMONE GARAGNANI, <i>Archaeological Building Information Modeling: beyond scalable representation of architecture and archaeology</i>	141
AURELIO MUZZARELLI, MALIK FRANZOIA, <i>The ancient Digital Terrain Model and the infrastructure of the Etruscan city of Kainua</i>	151
BOJANA GRUŠKA, GIACOMO MANCUSO, ENRICO ZAMPIERI, <i>Building materials and virtual models of the Etruscan city of Kainua</i>	165
GIUSEPPE SASSATELLI, <i>Kainua Project Special Session: conclusioni</i>	177
ETRUSCAN CITIES AND THEIR LANDSCAPES: NEW PERSPECTIVES, INNOVATIVE METHODS AND DISSEMINATION	
CARMINE PELLEGRINO, AMEDEO ROSSI, <i>Contemporary landscape and the archaeological record. An integrated approach to the study of the Etruscan-Samnite site of Pontecagnano (SA)</i>	189
MARIA PAOLA BAGLIONE, BARBARA BELELLI MARCHESINI, CLAUDIA CARLUCCI, LAURA MARIA MICHETTI, <i>Pyrgi, harbour and sanctuary of Caere: landscape, urbanistic planning and architectural features</i>	201

GIOVANNA BAGNASCO GIANNI, MATILDE MARZULLO, ANDREA GARZULINO, <i>The last ten years of research at Tarquinia</i>	211
GIUSEPPINA ENRICA CINQUE, HENRI BROISE, VINCENT JOLIVET, <i>Civita Musarna (VT), il suo territorio e la chora di Tarquinia in età ellenistica: uno spazio ritualmente suddiviso?</i>	223
PATRICIA S. LULOF, MAARTEN H. SEPERS, <i>The Acquarossa Memory Project. Reconstructing an Etruscan town</i>	233
EMANUELE TACCOLA, LISA ROSSELLI, <i>Understanding Etruscan art and architecture through 3D modeling: the case of Volterra</i>	243
TOMMASO QUIRINO, <i>Open architecture RDBMS and GIS as tools for analysing the Etruscan presence in the Po Plain: towards a model of the urban/non urban landscape</i>	253
FROM THE ANCIENT CITIES TO THE LANDSCAPES: PROJECTS AND RESEARCHES	
FRANK VERMEULEN, <i>Scanning and visualization of Roman Adriatic townscapes</i>	269
ALESSANDRO CAMPEDELLI, MARCO DUBBINI, MARTINA MONICA, <i>Geo-archaeological study of the territory of Burnum's Roman site (Croatia) through LANDSAT multi-temporal satellite images and high resolution GeoEye</i>	277
ILARIA ROSSETTI, <i>Reshaping the urban space: Bakchias in Ptolemaic and Roman times</i>	291
FEDERICA BOSCHI, ENRICO GIORGI, MICHELE SILANI, <i>Reconstructing the ancient urban landscape in a long-lived city: the Asculum Project – combining research, territorial planning and preventative archaeology</i>	301
FERRAN CODINA, GABRIEL DE PRADO, ISIS RUIZ, ALBERT SIERRA, <i>The Iberian town of Ullastret (Catalonia). An Iron Age urban agglomeration reconstructed virtually</i>	311
ANNA CHIARA FARISELLI, FEDERICA BOSCHI, MICHELE SILANI, MELANIA MARANO, <i>Tharros – Capo San Marco in the Phoenician and Punic Age. Geophysical investigations and virtual rebuilding</i>	321
SIMONE MANTELLINI, <i>A city and its landscape across time: Samarkand in the ancient Sogdiana (Uzbekistan)</i>	333
STARTING AND ONGOING PROJECTS	
STEFANO FINOCCHI, VINCENZO BALDONI, <i>Numana and its ancient territory: new data and research perspectives</i>	345

GIUSEPPE LEPORE, ENRICO GIORGI, VINCENZO BALDONI, FEDERICA BOSCHI, MARIA CONCETTA PARELLO, MARIA SERENA RIZZO, <i>New methodologies to analyze and study the Hellenistic-Roman quarter in Agrigento</i>	353
MICHELE SILANI, ENRICO GIORGI, FEDERICA BOSCHI, GABRIELE BITELLI, ALBERTA MARTELLONE, <i>Seeing into the past: integrating 3D documentation and non-invasive prospecting methods for the analysis, understanding and reconstruction of the ancient Pompeii. The case of the House of Obellio Firmo (IX, 14)</i>	361
ISABEL ESCRIVÀ, JOSÉ J. MARÍN, ALBERT RIBERA, MIQUEL ROSSELLÓ, ALFREDO SANTONJA, <i>Reconstructing the Late Antiquity Episcopal Complex of Valentia</i>	369
GERVASIO ILLIANO, <i>Misenum: the harbour and the city. Landscapes in context</i>	379
VALERIA POSCETTI, SAVERIO GIULIO MALATESTA, VIRGINIA CIRILLI, FRANCESCO LELLA, VITO RONDINELLI, SALVATORE ESPOSITO, MARCO BALSÌ, <i>Preliminary results of the Castelmonardo Project</i>	391
METHODOLOGIES, APPLICATIONS AND INTEGRATED SOLUTIONS	
MARIA ROUSSOU, FRANCESCO RIPANTI, KATERINA SERVI, <i>Engaging visitors of archaeological sites through “emotive” storytelling experiences: a pilot at the Ancient Agora of Athens</i>	405
MARCO GAIANI, <i>Management and communication of archaeological artefacts and architectural heritage using digital IS. What today? What next?</i>	421
ANDREA D’ANDREA, ANGELA BOSCO, MARCO BARBARINO, <i>A 3D environment to rebuild virtually the so-called Augusteum in Herculaneum</i>	437
GIOVANNA LIBEROTTI, CORRADO ALVARO, <i>Using laser scanner technology to analyse mud-brick architecture in the ancient Near East. The Palatial Complex of Arslantepe (Malatya, Turkey)</i>	447
MOISÉS HERNÁNDEZ CORDERO, <i>Geomatics approach to surveys for Late Antiquity buildings. The Episcopal Palace in Side, Turkey</i>	457
FILIBERTO CHIABRANDO, GIULIA SAMMARTANO, ANTONIA SPANÒ, GRAZIA SEMERARO, <i>Multi-temporal images and 3D dense models for archaeological site monitoring in Hierapolis of Phrygia (TR)</i>	469
ELISABETTA DONADIO, RICCARDO MAZZA, FEDERICO BARELLO, <i>Multimedia digital solutions from image and range based models for ancient landscapes communication</i>	485
VALERIA CERA, <i>Knowledge and valorization of historical sites through low-cost, gaming sensors and H-BIM models. The case study of Litternum</i>	497

ALFONSO IPPOLITO, MARTINA ATTENNI, CRISTIANA BARTOLOMEI, <i>Digital acquisition: reflections on data quality</i>	507
AARON PATTEE, ARMIN VOLKMANN, MATTHIAS UNTERMANN, <i>Integrative GIS-based investigation of the medieval fortress architecture of Pfalz, incorporating photogrammetry, geoinformatics and landscape analysis</i>	521
JACOPO BONETTO, ARTURO ZARA, <i>The Nora Virtual Tour: an immersive visit in the ancient city</i>	531
SILVIA BERNARDONI, MARCO MONTANARI, RAFFAELE TROJANIS, <i>Open History Map</i>	539
GIOVANNI AZZENA, ROBERTO BUSONERA, CHIARA PERINI, <i>The future (?) of effective protection</i>	549
SHORT PAPERS	
SARA LORETO, <i>Gropello Cairoli (PV): computer applications for historical-topographic synthesis</i>	563
ANNACHIARA PENZO, FEDERICA PRONI, ANTONIO GOTTARELLI, <i>The archaeological settlement of Monte Bibebe (Bologna)</i>	571
ILENIA GRADANTE, DAVIDE TANASI, <i>3D digital technologies for architectural analysis. The case of the “Pagan Shrine” in the Catacombs of Santa Lucia (Siracusa, Sicily)</i>	581
FRANCESCO GABELLONE, IVAN FERRARI, <i>Reconstruction of Villino Florio’s wooden ceiling using 3D technologies</i>	587
FRANCESCO GABELLONE, IVAN FERRARI, FRANCESCO GIURI, MARIA CHIFFI, <i>3D technologies for a critical reading and philological presentation of ancient contexts</i>	591
ANTONIO PECCI, FABIO DONNICI, <i>When there was no GIS system: rediscovering archaeological researches of the 19th century through the use of the drone. The case study of Mount Siri (Anzi, Basilicata)</i>	597
MARTIJN VAN DER KAAIJ, <i>Heron Visualisation Engine. Visualisation and dissemination of semantic cultural heritage data</i>	603
TATIANA VOTROUBEKOVÁ, <i>Etruscan rock-cut tombs with decorated façades. A 3D approach</i>	609

NEW METHODOLOGIES TO ANALYZE AND STUDY THE HELLENISTIC-ROMAN QUARTER IN AGRIGENTO

The Agrigento: *insula* III Project began in 2016 thanks to a convention between Parco Archeologico e Paesaggistico Valle dei Templi in Agrigento and the DiSCi of Bologna University. In three years' time, this project shall aim to complete the documentation of an entire sector of the so-called Hellenistic-Roman quarter, a large inhabited area in the center of the colonial settlement.

The intention of the team is to start a new systematic study of house building procedures in the Archaic and Late Archaic Age, and at the same time to give a new critique of urban planning in a sector of the city still lacking in modern archaeological and topographical documentation.

ALL THE AUTHORS

The starting point was the archive research (Soprintendenza BB.CC.AA., Museo Archeologico Regionale, Parco Valle dei Templi): a GIS with the known data positioning was set up, with particular attention given to the problem of the living floors in relation to different chronological phases.

As a matter of fact, *insula* III came to light in the 1950s (DE MIRO 2009): only some plans were preserved in the Parco archives from those investigations, while there has been little in the form of published material. Over the following years, in the *insula* and in the adjacent areas several pits were examined and all documentation was recovered. We had to proceed with a careful comparative examination for all the documentation, in which the same areas were named differently across different times. We shall combine the data from the old maps and documents with the new map that we are gathering in the GIS of the *insula* (Fig. 1).

This first phase of the research allowed us to properly locate all the old test pits and – consequently – to contextualize all the findings from previous investigations again. From a preliminary analysis of such plentiful materials now preserved in the Museum and in the deposits of the Parco Valle dei Templi, it was possible to obtain a comprehensive chronological time frame from the Archaic Age to the Late Antiquity, at least from the beginning of the Greek colonial settlement to the latest period of its occupation (6th century BC-6th century AD). The combined study of the findings and the documentation will allow us to acquire many useful data to reconsider the investigated areas and their functions.

V.B.

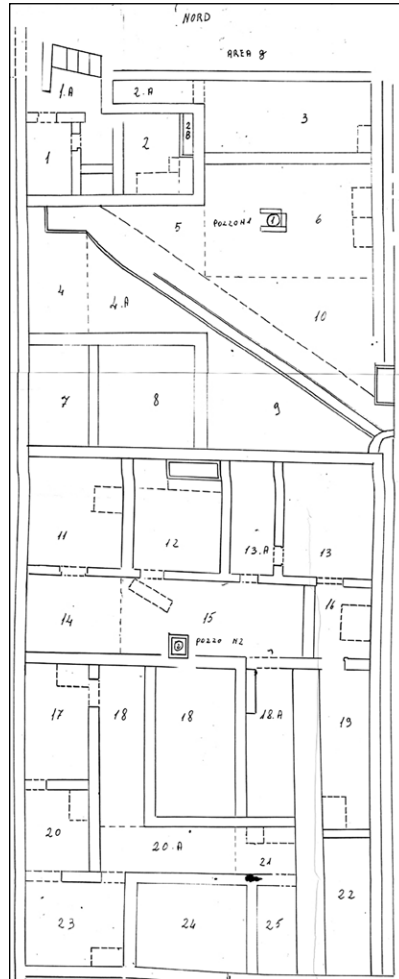


Fig. 1 – Map of the 1950s excavation in the *insula III* (particular). Archivio Parco Archeologico e Paesaggistico “Valle dei Templi”, Agrigento.

The second step of the research was the survey of the structure, using a new stratigraphic analysis as a means to examine the deterioration of the antique walls.

The survey was referred to – from a topographical perspective – a framework of networks prepared by the technicians of the Parco Valle dei Templi (BELVEDERE, BURGIO 2012).

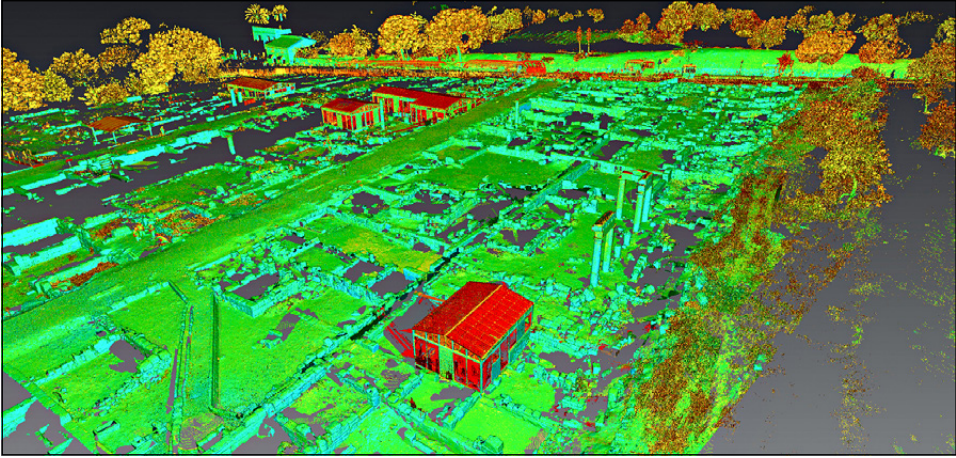


Fig. 2 – Laser-scanning of the *insula* III.

The documentation system was modeled on the 2015 experience in participation with the *Piano della Conoscenza* in Pompeii (SILANI *et al.* in this volume).

We therefore decided to proceed with a relief Laser Scanner Leica P30 with a dual-axis compensator and angular accuracy for single measurement of 8 inches. Scans were acquired with a density point of 6 mm and they were processed during pre-alignment through the target or natural point recognition. Afterwards we proceeded with the registration of point clouds with the ICP algorithm. The software used was Leica Cyclone 9.1.4.

Point texturization was obtained through the inside camera of the Laser Scanner (Leica P30) or in association with the NcTech ISTAR 360 panoramic camera. The entire cloud we obtained was 50% decimated and exported for further modeling. We therefore advanced with cloud cleansing, and currently the creation for Digital Surface Model (DSM) is in progress through the 3D Reshaper software, that is always texturized starting from the images obtained through the laser scanner's internal camera. Moreover, the laser scanner data processing is still being carried out: it will allow us to draw a new updated map, in addition to perspective drawing, axonometric projection, and orthophotos of the surveyed context. The final objective is to obtain new documentation drawn to a 1:50 scale including: a georeferenced plan, an integrated longitudinal section along the central axes of the block, integrated transverse sections in correspondence with different habitations, orthophotos of all the wall views and of the more significant floor surfaces (Fig. 2).

These drawings will be the base for proceeding further with an understanding of the elevations, with the acknowledgement of the techniques and the building materials used, according to the archaeology of architecture criteria, and with the interpretation of degrade mapping and static risk. This information will be catalogued in a database to be shared amongst colleagues and Parco technicians and is intended for study purposes.

E.G.

Before the beginning of the new archaeological excavations, planned for the October 2017, we have carried out a systematic campaign of geophysical surveys. Even the use of integrated non-invasive methods was aimed at a better understanding of the *insula* III in the Hellenistic-Roman quarter, with particular attention to its genetic phases and its evolution.

As such, a high-resolution Ground Penetrating Radar (GPR) mapping all the accessible spaces inside the standing buildings in the *insula* is in progress, in order to attempt the analysis and the 3D description of those not yet excavated underground spaces.

Simultaneously, through a geomagnetic survey, we undertook the exploration of the now open fields, starting from the eastern area of the quarter, to acquire new data on the extension and the articulation of the residential area, in those partially known or unknown sectors. On the whole, we believe that this work can be potentially useful for the reconstruction of the cityscape and of the urban planning. The collected data is being processed and interpreted, on the basis of integration with all the available sources of information. In particular, we are working with feedbacks between the stratigraphic information from previous excavations and that which was obtained through GPR slice-maps related to specific depths (see on this CONYERS, GOODMAN 1997; CONYERS 2004; BOSCHI 2009). We shall preliminarily point out that, in many of the surveyed spaces within the *insula*, we can observe the detection of levels of frequentation and traces of walls-foundations quite regularly, attested between 0.30 and 1.50 m in depth, which are potentially referable to living phases earlier than those that are currently visible (Fig. 3).

F.B.

In conclusion, it is possible to make some archaeological considerations. The internal articulation of living buildings, as it seems today, is datable to a building phase of the early/middle Roman Imperial period during which some more or less incisive changes in Late Antiquity were laid out, in most cases intended to re-functionalize the living areas for artisanal and commercial purposes (PARELLO *et al.* 2016). Numerous test pits carried out under the houses in *insulae* I and II showed different structures referring to the

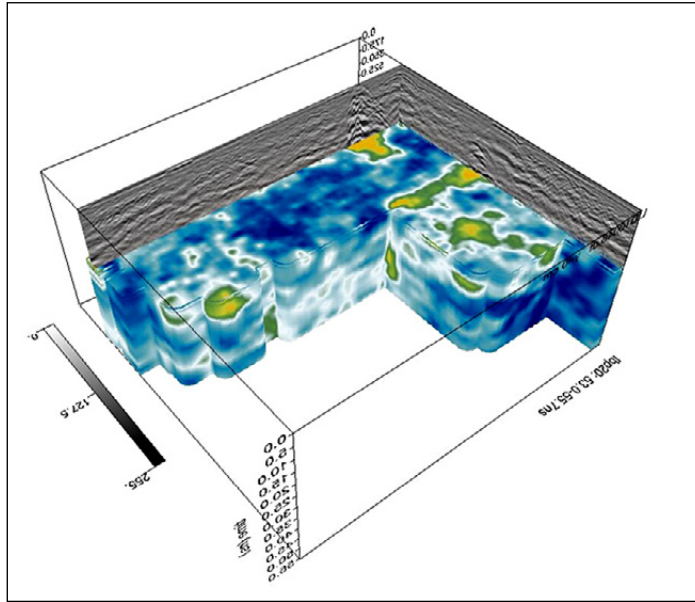


Fig. 3 – 3D slice-map of the *pastas* of the House III A (*insula* III).

occupation of the Hellenistic-Roman quarter during the Archaic Age; their depth is variable when compared to the Hellenistic-Roman surface area, due to the geomorphological features of the area, being marked by a gradient both in the NS and the EW (DE MIRO 2009; PARELLO, RIZZO 2015). It is not yet clear what kind of building they refer to, although the new examination allowed us to emphasize the positioning of outside walls (set exactly on the block half) and the presence of a small diagonal *ambitus* tract. Nothing is yet known about the most ancient phases of *insula* III, where the investigation has never gone further than the Hellenistic ones. However, it is interesting to note that in one of the studies, carried out under the mosaic of the House III H (so-called *Casa delle Pelte*), a terracing wall set in NS direction was detected and is datable, according to excavators, to between 3rd and 2nd century BC, its function probably being to allow an enlargement of the terrace where houses were eventually built (DE MIRO 2009, 369-370).

The present division of lots inside the block, according to what E. De Miro claims, should reflect an unequal distribution realized in late Hellenistic period (end of the 2nd century BC-Augustan Age), when a great part of the diagonal and longitudinal *ambitus* were knocked down to create big houses of the Greek-Hellenistic type (perystile), which would occupy the entire width of the block.

Such transformations are less clear inside *insula* III, where the longitudinal *ambitus* is preserved entirely (probably because the function of the terraced wall), even if it is unbalanced towards the W for 50 cm along the northern edge of the block. Here, houses maintain a more conservative planimetric aspect and their articulation inside the *insula*, characterized by the succession of squared and rectangular lots (today only partially visible due to successive modifications), seems to refer to those visible ones in the inhabited areas in “Porta II” in Agrigento or the acropolis of “Molino a Vento” in Gela (DE ORSOLA 1991; DE MIRO 1996). This suggestion, however, would be confirmed, or otherwise disproved, only after new stratigraphic studies alongside a more accurate reading on the emerging matters of “Porta II”.

The *pastas* house is the most common shape inside the *insula* III, recognized even after important structural transformations made during imperial period. This shape is linked to a building technique in which isodomic dry stone blocks are all set at uniform sizes (1.36 m in length, 0.45/0.50 in height, 0.55 in width), of which have not been used in successive developments. At the present state of research, it is not possible to establish which chronological phase or phases the *pastas* house refers to. Nevertheless, the preliminary analysis of architectural elements and decorative devices lead to a following phase, when the *pastades* colonnade was taken advantage of in order to create the peristyle: it is possible to roughly place the *terminus ante quem*, to the second half of the 2nd century BC.

G.L.

The presence of cement floors with decorated clay bases, Sicilian-Ionic capitals, Sicilian-Corinthian capitals and Doric capitals with a compacted echinus inserted inside houses that have small or long porches with four columns, allow us to consider the Hellenistic-Roman quarter inside an artistic and architectural *koine* well documented during the Hellenistic phase of public and private architecture in the prosperous cities of the Tyrrhenian coast (such as Segesta, Soluntum, Panormus, Thermae, Halaesa, etc.), which, according to almost unanimous opinion among scholars in the last decade, would have developed starting from the second half of the 2nd century BC, in particular during the final quarter (CAMPAGNA 2006; PORTALE 2015). Such an assumption contrasts with previously held beliefs, which considered the age of Timoleon to be the last season for the flourishing of insular Hellenism, to be extended to the 3rd century BC only within the boundaries of the Siracuse’s reign (BELVEDERE, TERMINE 2005; MONTE in press).

However, as evident as it might be that the development of Hellenic-matrix artistic culture does not wear out after the Roman conquest, on the contrary, it would have received new drives and motivations from it, thanks to connections created with the Hellenistic West. It is relevant to note the

apparent restrictiveness in compressing all the findings into such a short chronological phase, especially when we consider that, in most cases, this chronology is exclusively based on the stylistic analysis of decorative sets.

ALL THE AUTHORS

GIUSEPPE LEPORE, ENRICO GIORGI, VINCENZO BALDONI, FEDERICA BOSCHI
Alma Mater Studiorum – Università di Bologna
Dipartimento di Storia Culture Civiltà
giuseppe.lepore4@unibo.it, enrico.giorgi@unibo.it, vincenzo.baldoni@unibo.it,
federica.boschi5@unibo.it

MARIA CONCETTA PARELLO, MARIA SERENA RIZZO
Parco Archeologico e Paesaggistico Valle dei Templi di Agrigento
mariaconcetta.parello@regione.sicilia.it, mariaserena.rizzo@regione.sicilia.it

REFERENCES

- BELVEDERE O., BURGIO A. 2012, *Carta Archeologica e Sistema Informativo Territoriale del Parco Archeologico e Paesaggistico della Valle dei Templi di Agrigento*, Palermo, Regione siciliana-Assessorato dei beni culturali e dell'identità siciliana.
- BELVEDERE O., TERMINE E. 2005, *L'urbanizzazione della costa nord-orientale della Sicilia e la struttura urbana di Tindari*, in S. MOLS, E.M. MOORMANN (eds.), *Omni pede stare. Saggi architettonici e circumvesuviani in memoriam Jos de Waele*, Napoli, Electa, 85-91.
- BOSCHI F. 2009, *Introduzione alla geofisica per l'archeologia*, in E. GIORGI (ed.), *Groma 2. In profondità senza scavare*, Bologna, BraDypUs, 291-315.
- BRIENZA E., CALIÒ L.M., FURCAS G.L., GIANNELLA F., LIUZZO M. 2016, *Per una nuova definizione della griglia urbana della antica Akragas. Contributo preliminare ad una nuova immagine della città*, «Archeologia Classica», 67, 57-109.
- CAMPAGNA L. 2006, *L'architettura di età ellenistica in Sicilia. Per una rilettura del quadro generale*, in M. OSANNA, M. TORELLI (eds.), *Sicilia ellenistica, consuetudo italica. Alle origini dell'architettura ellenistica d'Occidente. Atti del Convegno (Spoleto 2004)*, Roma, Edizioni dell'Ateneo, 15-34.
- CONYERS L.B. 2004, *Ground Penetrating Radar for Archaeology*, Walnut Creek, AltaMira Press.
- CONYERS L.B., GOODMAN D. 1997, *Ground Penetrating Radar: An Introduction for Archaeologists*, Walnut Creek, AltaMira Press.
- DE MIRO E. 1996, *La casa greca in Sicilia*, in F. D'ANDRIA, K. MANNINO (eds.), *Ricerche sulla casa in Magna Grecia e in Sicilia. Atti del Colloquio (Lecce 1992)*, Galatina, Congedo, 17-40.
- DE MIRO E. 2009, *Agrigento IV. L'abitato antico. Il Quartiere ellenistico-romano*, Roma, Gangemi.
- DE ORSOLA D. 1991, *Il quartiere di Porta II ad Agrigento*, «Quaderni di archeologia. Università degli studi di Messina», 6, 71-106.
- MONTE G. in press, *Urbanistica e architettura pubblica a Solunto: nuove considerazioni e confronti con altri centri della Sicilia medio e tardo ellenistica, in Theatroideis. L'immagine della città, la città delle immagini. Atti del Convegno (Bari 2016)*, in press.
- PARELLO M.C., RIZZO M.S. (eds.) 2015, *Agrigento romana. Scavi e ricerche nel quartiere ellenistico romano. Campagna 2013*, Palermo, Regione siciliana, Assessorato dei beni culturali e identità siciliana, Dipartimento dei beni culturali e dell'identità siciliana.
- PARELLO M.C., RIZZO M.S. (eds.) 2016, *Paesaggi urbani tardoantichi. Casi a confronto. Atti delle Giornate Gregoriane VIII Edizione (Agrigento 2014)*, Bari, Edipuglia.

PORTALE E.C. 2015, *Un confronto: la Sicilia nel III secolo*, in *La Magna Grecia da Pirro ad Annibale. Atti del 52 Convegno di Studi sulla Magna Grecia (Taranto 2012)*, Taranto, Istituto per la storia e l'archeologia della Magna Grecia, 697-736.

ABSTRACT

The Agrigento: *insula III* Project began in 2016 thanks to an agreement between the Parco Archeologico e Paesaggistico Valle dei Templi di Agrigento and DiSCi - Bologna University; it aims to document an entire sector of the Hellenistic-Roman quarter, in a three-year period. The main goal is to start a systematic study of private housing from the Archaic period to Late Antiquity and, at the same time, provide a critical understanding of the town planning scheme in this part of the town, which still lacks a modern archaeological and topographical documentation. The interpretation of the previous documentation is the starting point, along with new mapping with laser scanning and a systematic campaign of geophysical investigations to obtain a BIM. As the Bologna University tradition teaches, modern technologies can answer precise historical and archaeological questions: what are the primary phases of the town map? Which one is the starting module of each lot and what are the changes in different ages? Is it possible to reconstruct the original architecture of Hellenistic houses? What is the relationship between this quarter and the rest of the town? The integration of traditional investigational techniques with more recent ones is the methodological assumption of the project, in order to solve the analysis of the complex stratigraphy of the setting, which was inhabited for at least a millennium, from the Archaic to the Middle Ages.

28.2

2017

Knowledge, Analysis and Innovative Methods
for the Study and the Dissemination of Ancient Urban Areas
Proceedings of the KAINUA 2017 International Conference

€ 72,00

ISSN 1120-6861

e-ISSN 2385-1953

ISBN 978-88-7814-785-0

e-ISBN 978-88-7814-786-7



9 788878 114785 0

ARCHEOLOGIA
E CALCOLATORI