

ALMA MATER STUDIORUM - UNIVERSITÀ DI BOLOGNA

OCNUS

Quaderni della Scuola di Specializzazione
in Beni Archeologici

33
2025

ESTRATTO

Ante
Quem

Direttore Responsabile
Elisabetta Govi

Comitato Scientifico

Andrea Augenti (Alma Mater Studiorum - Università di Bologna)
Dominique Briquel (Université Paris-Sorbonne - Paris IV)
Pascal Butterlin (Université Paris 1 - Panthéon-Sorbonne)
Paolo Carafa (Sapienza, Università di Roma)
Andrea Cardarelli (Sapienza, Università di Roma)
Martin Carver (University of York)
Maurizio Cattani (Alma Mater Studiorum - Università di Bologna)
Elisabetta Govi (Alma Mater Studiorum - Università di Bologna)
Anne-Marie Guimier-Sorbets (Université de Paris Ouest-Nanterre)
Nicolò Marchetti (Alma Mater Studiorum - Università di Bologna)
Emanuele Papi (Scuola Archeologica di Atene)
Mark Pearce (University of Nottingham)
Giuseppe Sassatelli (Istituto Nazionale di Studi Etruschi e Italici)
Frank Vermeulen (University of Ghent)

Comitato Editoriale

Claudio Cavazzuti (Alma Mater Studiorum - Università di Bologna)
Andrea Gaucci (Alma Mater Studiorum - Università di Bologna)

Ocnus. Quaderni della Scuola di Specializzazione in Beni Archeologici adotta un processo di double blind peer review.
Rivista di classe A - ANVUR dell'area 10

Le sigle utilizzate per i titoli dei periodici sono quelle indicate nella «Archäologische Bibliographie» edita a cura del Deutsches Archäologisches Institut.

Il logo di Ocnus si ispira a un bronzo del VI sec. a.C. dalla fonderia lungo la platea A, Marzabotto (Museo Nazionale Etrusco "P. Aria", disegno di Giacomo Benati).

Editore e abbonamenti

Ante Quem
Via Senzanome 10, 40123 Bologna
www.antequem.it

Abbonamento

€ 40,00

Sito web

www.ocnus.unibo.it

Richiesta di scambi

Biblioteca del Dipartimento di Storia Culture Civiltà
Piazza San Giovanni in Monte 2, 40124 Bologna
tel. +39 051 2097700; fax +39 051 2097802; federica.rossi@unibo.it

Autorizzazione tribunale di Bologna nr. 6803 del 17.4.1988

Senza adeguata autorizzazione scritta, è vietata la riproduzione della presente opera e di ogni sua parte, anche parziale, con qualsiasi mezzo effettuata, compresa la fotocopia, anche ad uso interno o didattico.

ISSN 1122-6315

ISBN 978-88-7849-211-0 (stampa); 978-88-7849-216-5 (online italiano); 978-88-7849-217-2 (online english)

TABLE OF CONTENTS

Premise, <i>Alberto Credi</i>	9
Preface, <i>Roberto Balzani, Anna Chiara Fariselli</i>	10
Introduction, <i>Elisabetta Govi</i>	11

EXCAVATIONS IN ITALY

Elisabetta Govi, Andrea Gaucci, Chiara Mattioli, Chiara Pizzirani, Giorgia Bandini, Martina Castoldi, Laura Sofia Di Giorno <i>The Urban Sanctuary of Kainua-Marzabotto</i>	17
Elisabetta Govi, Enrico Zampieri <i>Inside the City and Across the River. New non-Invasive investigations in Kainua-Marzabotto and the Reno Valley</i>	25
Claudio Cavazzuti, Cristiano Putzolu, Florencia Ines Debandi, Marialetizia Carra, Antonio Curci, Andrea Gaucci, Cristiano Nicosia, Assunta Florenzano, Erik Zanotti, Silvia Fiorini, Simone Severi, Nicla Branchesi, Senne Rombaut, Sara Malavasi, Gaia Vicenzi, Niccolò Morin, Davide Masini, Federico Polisca <i>Upland Archaeology at Monte della Croce (Gaggio Montano, Bologna)</i>	35
Claudio Cavazzuti, Maurizio Cattani, Francesca Barchiesi, Lorenzo Bonazzi, Marialetizia Carra, Florencia Ines Debandi, Elena Maini, Alessandro Peinetti <i>The Bronze Age settlement of Solarolo, via Ordriere (Ravenna)</i>	45
Andrea Augenti, Mila Bondi, Marco Cavalazzi <i>Birth, Life, and Death of a Medieval City: The Archeologia a Cervia' Project</i>	53
Andrea Augenti, Marco Cavalazzi <i>The Excavation of the Castle of Zagonara (Lugo, Ravenna): From Early Medieval Scattered Settlements to the Abandoned Village</i>	63
Enrico Cirelli, Debora Ferreri <i>Archaeological excavations and surveys in the sites of Romagna Appennine: the castles of Rontana and Ceparano</i>	71
Andrea Gaucci, Claudio Balista, Marialetizia Carra, Léonard Gournay, Stephen Kay, Joé Juncker, Samuel Ladouce-Godier, Ferréol Salomon, Anna Serra, Carlotta Trevisanello, Enrico Zampieri <i>New Research in the Etruscan Port of Spina (Ferrara): Landscape Reconstruction and the Excavation of an Embankment</i>	85
Enrico Giorgi, Francesco Belfiori, Francesca Bindelli, Alessandro Campedelli, Anna Gamberini, Francesco Pizzimenti <i>Research in the Central Adriatic area: the Sanctuary of Monte Rinaldo and the Roman City of Suasa</i>	93
Federica Boschi <i>Archeonevola Project. Preventive Archaeology and Excavations in Contrada Nevola, Corinaldo (Ancona)</i>	103

Vincenzo Baldoni <i>New Research in the "I Pini" Necropolis at Sirolo (Ancona)</i>	111
Stefano Medas, Alessandro Asta, Barbara Mikac, Paolo Mozzi, Sandra Primon <i>Underwater Archaeological Investigations in the Passaora Channel, Venice Lagoon</i>	117
Francesco Iacono, Francesca Porta, Giovanna Agostini, Angela Falezza <i>The Roca Archaeological Survey Project (Roca Vecchia, Lecce)</i>	127
Francesco Iacono, Francesca Porta, Angela Falezza, Ludovica Schiavone, Giovanna Agostini <i>Torre dell'Alto Project (Nardò, Lecce)</i>	133
Stefano Benazzi, Antonino Vazzana, Owen Alexander Higgins, Ivan Martini, Gabriele Terlato, Simone Severi, Sara Silvestrini, Matteo Romandini, Gruppo Speleologico Neretino, Francesco Berna, Francesco Iacono, Lucio Calcagnile, Gianluca Quarta, Adriana Moroni, Giulia Marciani <i>New Evidence on the prehistoric human occupation of southern Italy: the Early Epigravettian and the Metal Ages at Grotta della Lea</i>	141
Antonella Coralini <i>Pompeii (1998-). From insula to neighbourhood</i>	151
Annalisa Marzano, Caitie Barrett, Kathryn Gleason, Lee A. Graña Nicolaou, Kaja Tally-Schumacher <i>The 'Casa della Regina Carolina Project at Pompeii' (VIII.3.14-15): in search of the ancient garden (and more)</i>	159
Vincenzo Baldoni <i>The Research Projects on the archaic-classical Kerameikos in the Area West of Porta V at Agrigento</i>	169
Giuseppe Lepore <i>Agrigento: Archaeology of Residential Spaces in Hellenistic and Roman Periods</i>	177
Isabella Baldini, Claudia Lamanna, Giulia Marsili, Carla Sfameni <i>Piazza Armerina (Enna), new excavations and researches at Villa del Casale</i>	183
Maurizio Cattani, Lorenzo Bonazzi, Rossana Conti, Florencia Ines Debandi, Francesco Iacono, Alessandra Magrì, Davide Mengoli, Demis Murgia, Alessandro Peinetti, Carlo Persiani, Smeralda Riggio <i>Pantelleria and the Mediterranean in the Bronze Age</i>	191
Anna Chiara Fariselli <i>The Tharros "Cardo Maximus Est" and Isthmus Sa Codriola Projects: Urban Archaeology and Archaeology of Production in the 'Carthage of Sardinia'</i>	199
Raimondo Secci <i>The Sarcaḗos Project: a River Port from the Phoenician and Punic Age along the East Coast of Sardinia</i>	209
EXCAVATIONS ABROAD	
Enrico Giorgi, Belisa Muka, Stefano Medas, Nadia Aleotti, Federica Carbotti, Veronica Castignani, Francesca D'Ambola, Giacomo Sigismondo <i>Butrint and Coastal Chaonia (Saranda, Albania)</i>	219

Giuseppe Lepore, Belisa Muka <i>Phoinike. Archaeology of a Border City</i>	227
Isabella Baldini, Claudia Lamanna, Giulia Marsili, Vassiliki Sithiakakis, Nikolaos Vasilakis <i>Mitropolis (Gortyn, Crete, Greece), Excavations of the Episcopal Quartier</i>	233
Antonella Coralini <i>Old excavations and new research for Tunisia's archaeological heritage. Thuburbo Maius and Hadrumetum</i>	241
Antonio Curci, Maria Carmela Gatto, Sara Facciani, Serena Nicolini, Cristiano Putzolu, Gaia Vicenzi <i>The Aswan-Kom Ombo Archaeological Project - AKAP</i>	253
Nicolò Marchetti <i>Imperial landscapes and capital cities of preclassic Mesopotamia: surface surveys in south-central Iraq and the excavations at Nineveh and Dur-Kurigalzu</i>	261
Luca Colliva, Serenella Mancini, Domenico Andreucci, Veronica Castignani, Ileana De Giuseppe, Alice Musarò, Paolo Severi, Giulia Giubergia, Mattia Sesenna, Anastasia Vicari, Salih Mohammed Sameen, Nawzad Abdullatif Abdul-Karim, Hoshyar Hassan, Mohammed Ali Karim, Sarwat H. Majeed <i>The Palace of Gawr Tepe (KRI, Iraq): a Diachronic Study of a Palace and Its Historical-Archaeological Context</i>	275
Luca Colliva, Serenella Mancini, Domenico Andreucci, Veronica Castignani, Ileana De Giuseppe, Alice Musarò, Paolo Severi, Giulia Giubergia, Mattia Sesenna, Anastasia Vicari, Salih Mohammed Sameen, Nawzad Abdullatif Abdul-Karim, Hoshyar Hassan, Mohammed Ali Karim, Sarwat H. Majeed <i>The MiSAK-Sarqala Project (KRI, Iraq): Research, Preservation, and Enhancement</i>	281
Pierfrancesco Callieri, Miqayel Badalyan, Domenico Andreucci, Federico Izzi, Diego Maria Mezzapelle, Paolo Severi <i>Armenian-Italian Joint Archaeological Mission (Unibo, ISMEO). Pilot programme of topographical survey of the environmental contexts of monumental buildings in the P'arak'ar area (Armavir)</i>	289
Pierfrancesco Callieri, Alireza Askari Chaverdi, Emad Matin, Homayun Abbasniya, Maria Letizia Amadori, Domenico Andreucci, Iris Arlotti, Ali Eghra, Paviz Holakooei, Maryam Hosseini, Serenella Mancini, Mehrnaz Partow, Maryam Soleymani, Paolo Severi, Stefano Tilia <i>Tol-e Ajori (Persepolis, Fars, Iran): a royal complex of the early Achaemenid period. Activities 2022-2024</i>	297
Simone Mantellini, Stefano Cecatiello, Sara Facciani, Valentina Orrù, Eleonora Serrone, Samaretdin Suyunov <i>The Uzbek-Italian Archaeological Project (UIAP) "Samarkand and its Territory"</i>	303
Maurizio Cattani, Francesca Barchiesi, Elisabetta Capecci, Claudio Cavazzuti, Florencia Ines Debandi, Dennys Frenez, Elena Maini <i>The archaeological fieldwork in the Sultanate of Oman: researching the formation of Arabian civilization in the 3rd millennium BC</i>	311
Eugenio Bortolini, Francesca Seghi, Sara Facciani, Vittoria Bianchi, Elisa Brener, Sara Bernardini, Sara Silvestrini, Dennys Frenez, Alberto Urcia, Antonino Vazzana, Stefano Benazzi <i>The Early Bronze Age Funerary site of Halban (Al-Batinah South Governorate), Sultanate of Oman</i>	319

THE ROCA ARCHAEOLOGICAL SURVEY PROJECT (ROCA VECCHIA, LECCE)

Francesco Iacono¹, Francesca Porta¹, Giovanna Agostini¹, Angela Falezza^{1 2}

The Roca Archaeological Survey, the archaeological survey centred on the landscape around the important settlement of Roca Vecchia (sometime spelled also Rocavecchia) in Southeastern Italy, has produced a wealth of new data on the landscape frequentation of one of the most important hubs in the central Mediterranean from later prehistory until medieval times. Here we summarise the results related to data collected and analysed so far.

Roca within the mobility context

The fortified site of Roca Vecchia (fig. 1) represents an extremely important archaeological reality within the Mediterranean context (Pagliara, Guglielmino 2005; Scarano 2012). Characterized by a continuity of occupation longer than 3000 years, from the 17th century BCE to the 16th century AD, Roca Vecchia denotes a focal point of interaction and long-term mobility already from the 2nd millennium BCE, when the prehistoric settlement was one of the most important nodes in the trading network with the Aegean and the Central Mediterranean (fig. 2). The area of Roca continued to be an important node also during the Greek-Roman period, whose dynamics of occupation and interaction are common across the entire Apulia region (Auriemma 2004), and during the Medieval and post-Medieval period (7th–16th century AD), when eastern Salento is settled by Griika-speaking people who had strong links with the trans-Adriatic world from a religious, cultural, and economic point of view. The importance of this area within mobility dynamics is maintained up until the late 1990s, when the municipalities

of S. Foca and Melendugno were at the center of the earliest migrations flows after the Cold War (Farina, Iacono 2023).

The *Roca Archaeological Survey* (RAS), the first systematic multi-period survey project in this area, started in 2019 and is led by a team from the University of Bologna. The main objective was to identify and analyse the traces of anthropic activities in the landscape surrounding the multi-phase site of Roca Vecchia in order to examine the characteristics of territorial frequentation.

Research Campaigns

With the purpose of expediting data digitalization, both on the field and in the later stage of analysis of the recovered materials, paperless data recording techniques were adopted (mostly through free and open-source software; see Iacono *et alii* 2020).

Research focused on three topographic areas situated at a growing distance from the Castello peninsula, where the prehistoric site is located, enclosed by the Bronze Age walls (fig. 1). The first area is located immediately west of the lagoon closing Roca Vecchia on the land side, the so-called Tamari Basin; the second one is located where the low ridge of this band of Salento starts; and the third area is on top of the plateau, where

¹ Department of History and Cultures, Alma Mater Studiorum, University of Bologna.

² Merton College, University of Oxford.

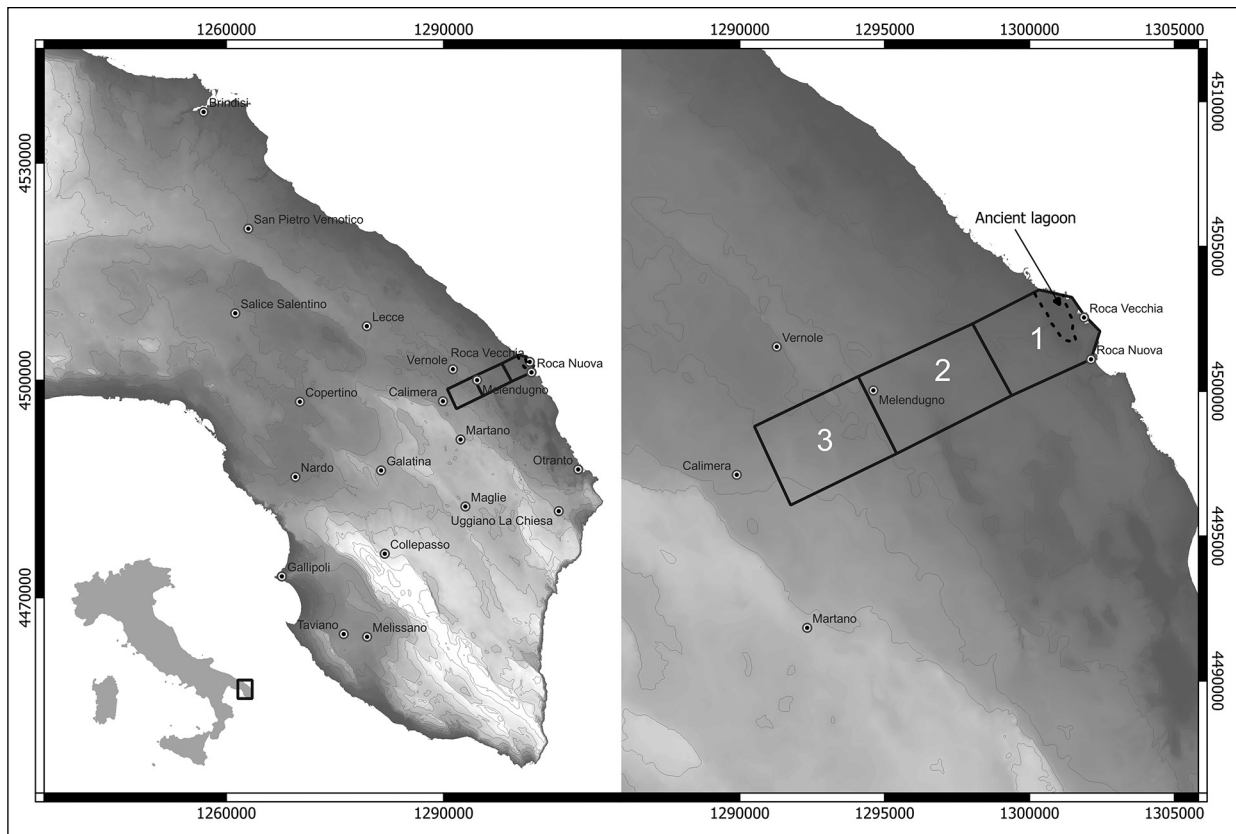


Fig. 1. Location of the site of Roca Vecchia and of the three macroareas investigated.

Apulia Cultures	Southern Italy	Mainland Greece	Absolute Years BC
Protoapennine	MBA1	LH I	1700–1600
		LH II A	1600–1460
Apennine	MBA2	LH II B	1460–1420
	MBA3	LH III A1	1420–1375
		LH III A2	1375–1340
Subapennine	RBA1	LH III B1	1340–1210
		LH III B2	
		Trans. LH III B2–C	
	RBA2	LH III C early	1210–1130
Protovillanovan	FBA1		1130–1100
	FBA2		
		LH IIIC Late	1100–1080
		Submycenaean	1080–1040

MBA: Middle Bronze Age; RBA: Recent Bronze Age; FBA: Final Bronze Age; LH: Late Helladic

Fig. 2. Table comparing the chronology of Southern Italy and Aegean during the Bronze Age (after Iacono 2019).

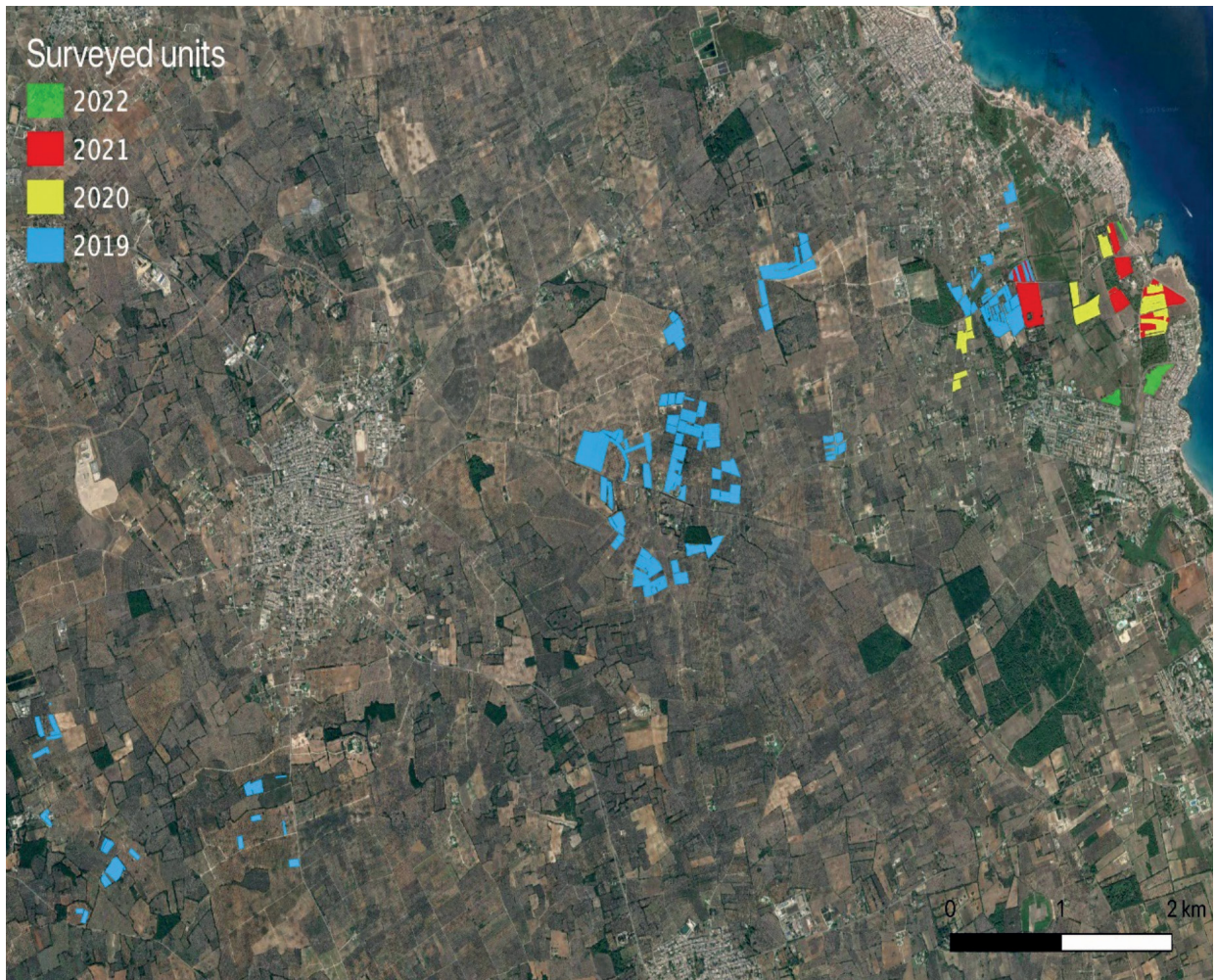


Fig. 3. Surveyed units.

the altitude is the highest. The exploration of chronological differences in the land use and in the settlement density between these areas, combined with the analysis of the processes forming the surface archaeological record, represented some of the main objectives of the investigation at the start of the project. The fields to investigate within these areas were generally selected according to their accessibility (fig. 3), with the exception of the innermost area, where the choice was influenced by its proximity to dolmen possibly dating to the Bronze Age (Iacono *et alii* 2020).

In terms of methodology, within the areas under investigation, fields were subdivided into units measuring 20 by 20 meters. These units were surveyed following the topographic characteristics of the terrain, recording the visibility conditions every 20 metres. Walkers were at a distance of about 5 metres from each other, which was occasionally extended to 10 metres depending on specific land

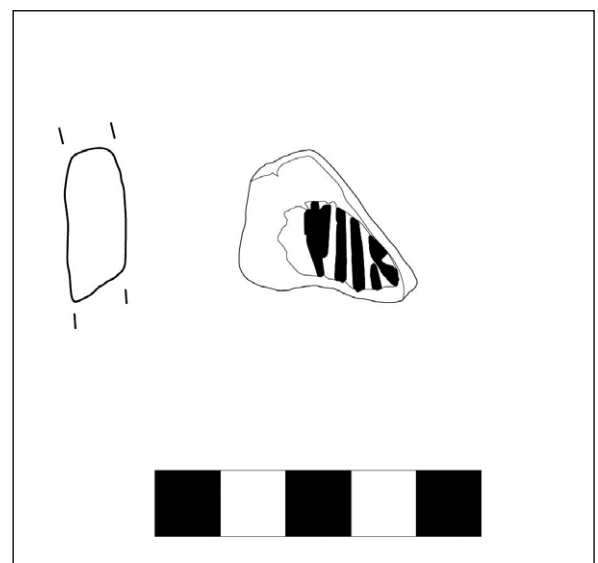


Fig. 4. Aegean-type pottery fragment from the area of Roca Vecchia (drawing by Z. Ceccato).

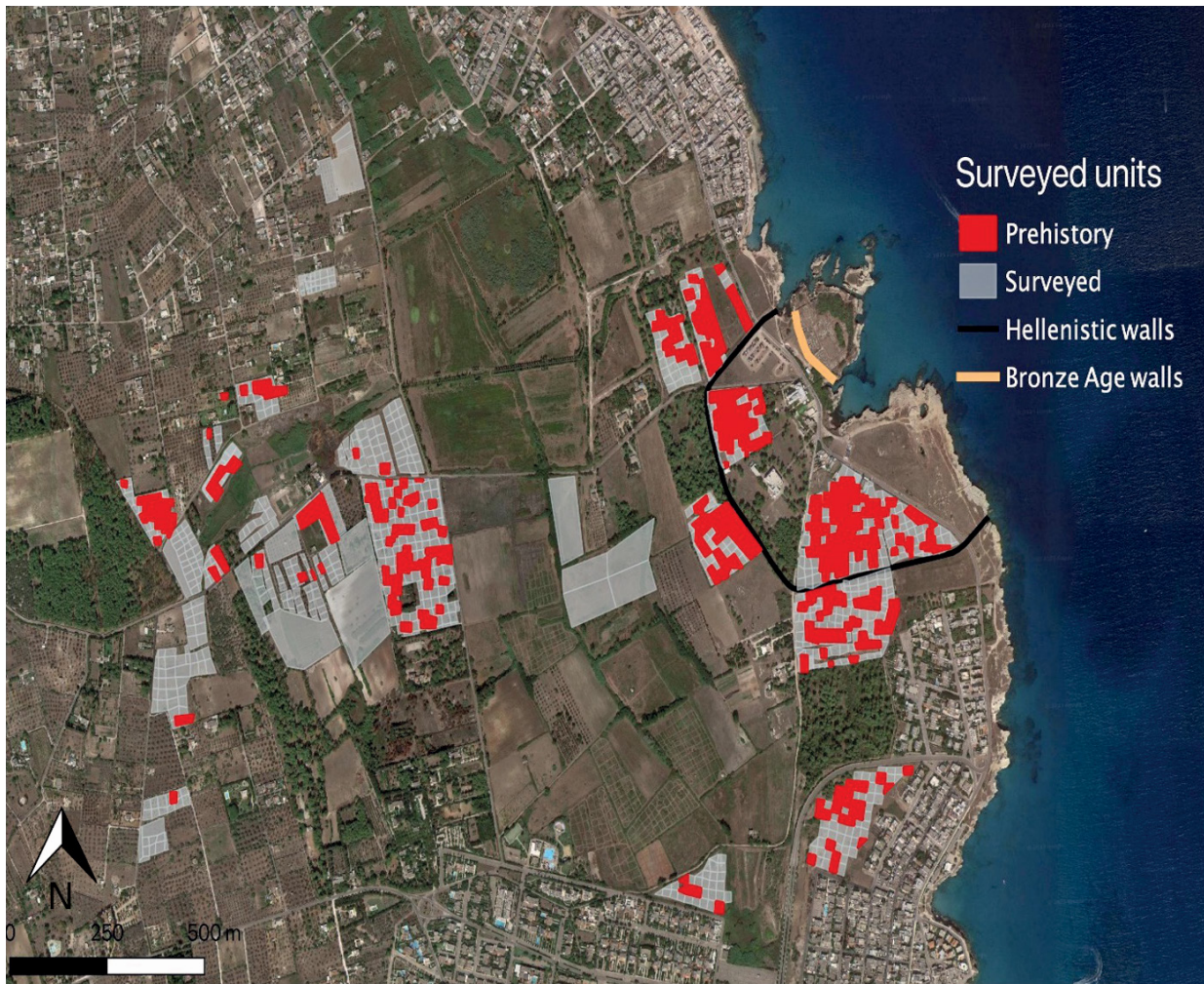


Fig. 5. Presence and distribution of prehistoric material across the surveyed area.

conditions and on the quantity of materials visible in the wider area. The gap of 5 metres was always applied when good conservation conditions occurred and/or when pre-modern materials were clearly visible along the limits of the fields. All data and factors influencing the artefacts visibility (weather conditions, vegetation, shade, ploughing, modern materials, stones) were recorded directly by each walker on their smartphones through the software Epicollect5 (*five.epicollect.net*). This type of survey infers that walkers can overlook an area in front of them of about 2 metres (1 m on the left side and 1 m on the right side), providing a coverage between 20% and 40%.

Results

The investigations allowed the identification of evidence for anthropic activities outside of the

main site of Roca Vecchia. A concentration of materials dating to different periods was identified in the area closest to the coast, despite the disturbances caused by intense building and agricultural activities. The evidence covers a wide chronological span from the late Palaeolithic period to the most recent past. More in detail, the study of recovered materials allowed to attest a widespread medieval/post-medieval presence in many of the areas investigated. The prehistoric evidence is limited to the area of the paleochannel which probably fed the Tamari Basin in the past, and to sparse inland finds.

The recording and quantification of the recovered materials helped to clarify the different stages of human presence in the area. Lithic materials dating to the late Paleolithic were recovered on the inner limit of the Tamari Basin. Such materials represent the most ancient evidence for human presence in the area, while their location in the

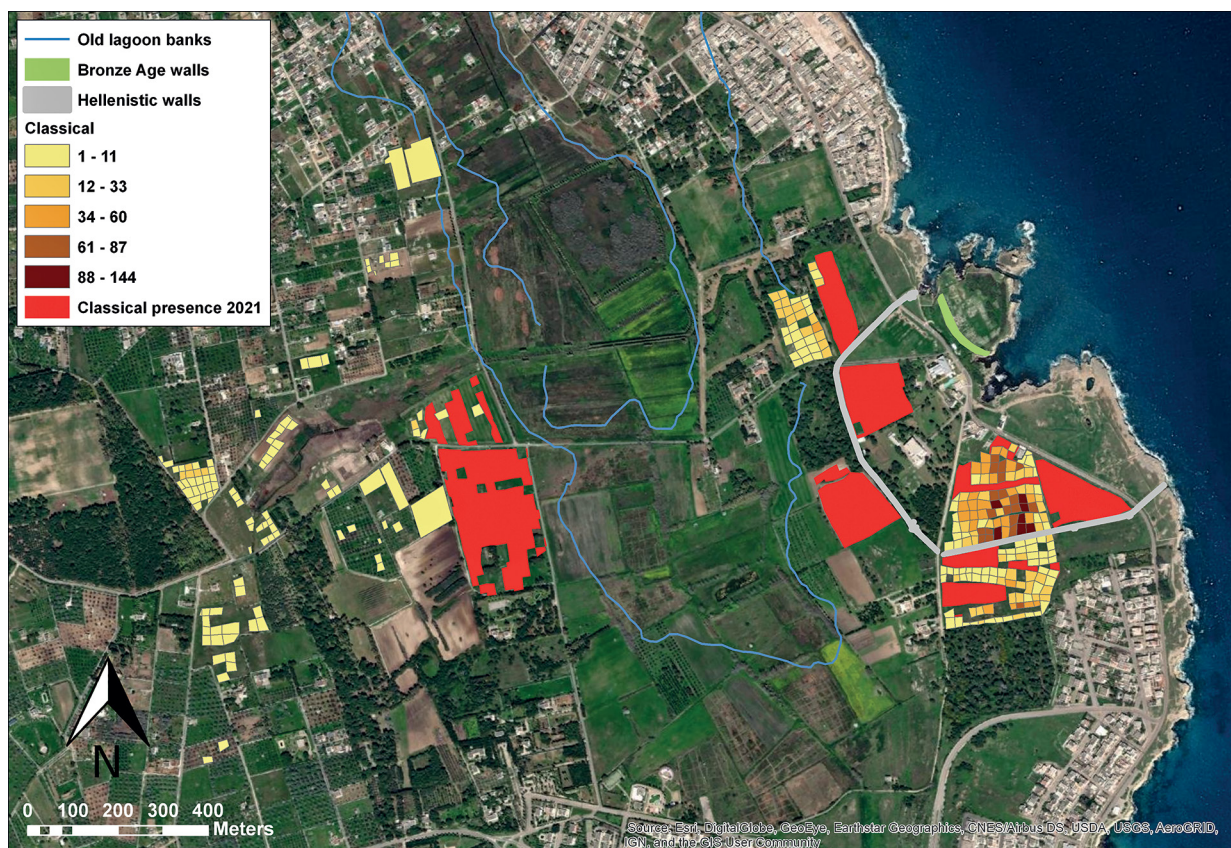


Fig. 6. Presence and distribution of classic material across the surveyed area.

Tamari Basin seems to reflect a clear preference towards marshy environments along the coast as settling areas since the late Palaeolithic. After the horizon dating to the upper Palaeolithic and the later Mesolithic, according to the current data, the occupation of the Roca Vecchia peninsula does not appear to have preceded the Middle Bronze Age (Protoapennine, Iacono 2019; Scarano 2012). These early stages already experienced phenomena of small-scale mobility, associated with the interaction of the prehistoric community of Roca Vecchia with the surrounding landscape. Protohistoric material is attested in a broad area outside of the wall of the main settlement. The density of materials thins out in a radial way from the peninsula of Roca towards the inland, suggesting the presence of a single nucleus of activities rather than multiple ones. The only Aegean-type pottery sherd, possibly dating the LH III B–C early period (Recent Bronze Age), so far identified outside the main settlement of Roca Vecchia comes from the area closer to the site (fig. 4).

One of the main results of RAS is to have demonstrated how in prehistory the area with evi-

dence for human presence and activities was already wider than the area enclosed by the Bronze Age fortification walls of Roca Vecchia (figg. 5–6).

Only a deep analysis of the materials and further investigations will allow us to verify the presence of continuity and/or chronological contiguity between the earliest materials from the settlement on the peninsula and those in the new identified locations, or, vice versa, the existence of interruptions in the occupation of the area.

Acknowledgements

The Roca Archaeological Survey project was conducted thanks to the permit granted by the Superintendence for the provinces of Lecce and Brindisi and to financial support offered by the Italian Ministry of University and Research (Progetto Montalcini “Landscape of Mobility and Memory” 1910), as well as the University of Bologna (Alma Scavi) and the Municipality of Melendugno. The research activity has been co-founded by the European Union - Next Generation EU Mis-

sion 4 Component 1, CUP J53D23000250006, MUR code 2022J4R8HA.

A special thanks also goes to all the students who, over the years, have taken part in the project with perseverance and dedication.

References

Auriemma, R., 2004. *Salentum a salo. Porti, approdi, rotte e scambi lungo la costa adriatica salentina*, I-II, Galatina: Congedo Editore.

Farina, E.B., Iacono, F., 2023. Migration flows and concrete walls: an archaeological perspective on early migrant detention facilities. The C.P.T “Regina Pacis” (Italy, Puglia), *World Archaeology* 55(2): 206-226.

Iacono, F., 2019. *The Archaeology of Late Bronze Age Interaction and Mobility at the Gates of Europe: People, Things and Networks around the Southern Adriatic Sea*, London: Bloomsbury.

Iacono, F., De Nef, W., Spagnolo, V., Coluccia, L., 2020. Roca Archaeological Survey: Inquadramento e primissimi risultati, *FOLD&R* 13: 1-14

Pagliara, C., Guglielmino, R., 2005. Roca: dalle curiosità antiquarie allo scavo stratigrafico, in S. Settis, M.C. Parra (a cura di), *Magna Graecia: Archeologia di un Sapere*, Milano: Electa-Università degli Studi Magna Graecia: 298-321.

Scarano, T., 2012. *Roca I. Le fortificazioni della media età del Bronzo. Strutture, contesti, materiali*, Foggia: Claudio Grenzi Editore.