

Supplemental Figures

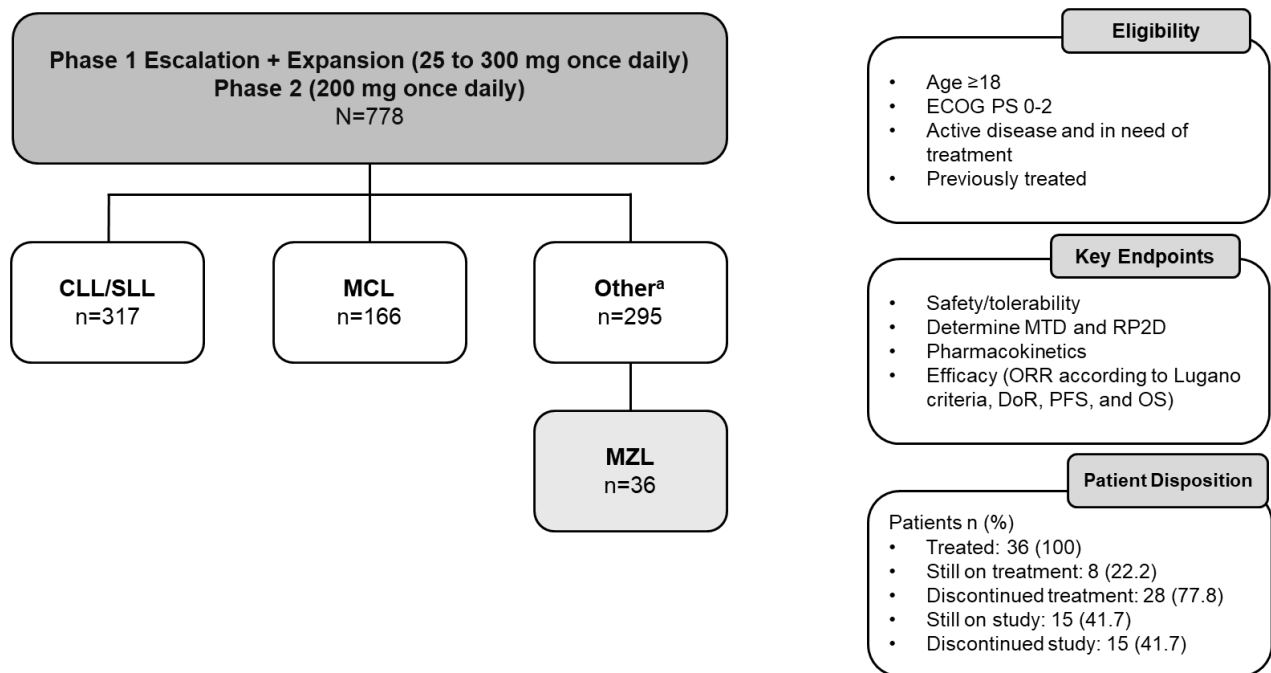
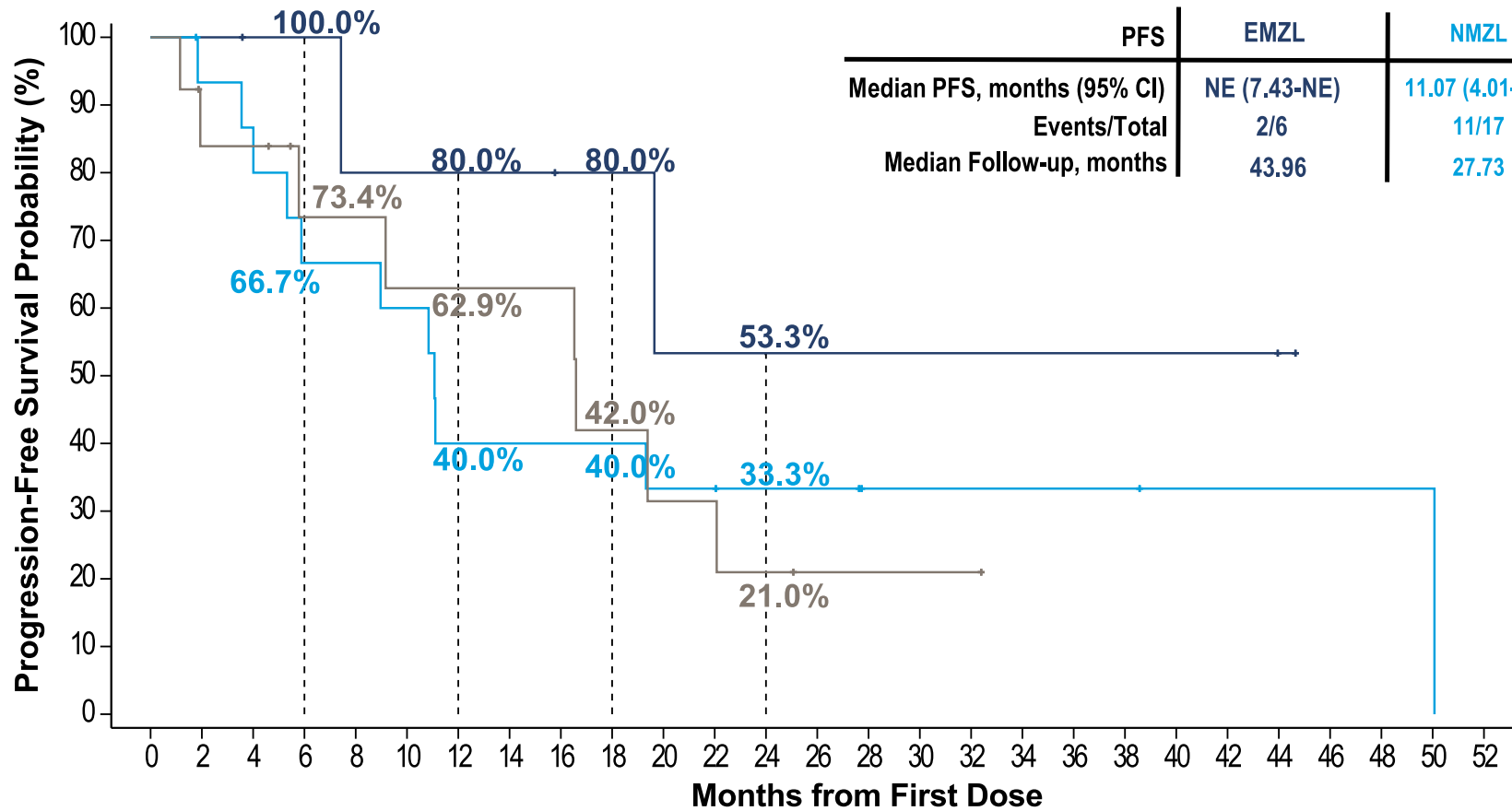


Figure S1. Phase 1/2 BRUIN Study: Design, Eligibility, and Enrollment.

Study schema of the BRUIN trial with key eligibility criteria and endpoints, a data cutoff of 27 Jan 2025.

^aOther includes Richter transformation, marginal zone lymphoma, Waldenström macroglobulinemia, hairy cell leukemia, B-cell prolymphocytic leukemia, primary central nervous system lymphoma, and other transformations.

Abbreviations: CLL, chronic lymphocytic leukemia; DoR, duration of response; ECOG PS, Eastern Cooperative Oncology Group performance status; MCL, mantle cell lymphoma; MZL, marginal zone lymphoma, MTD, maximum tolerated dose; ORR, overall response rate; OS, overall survival; PFS, progression free survival; SLL, small lymphocytic lymphoma

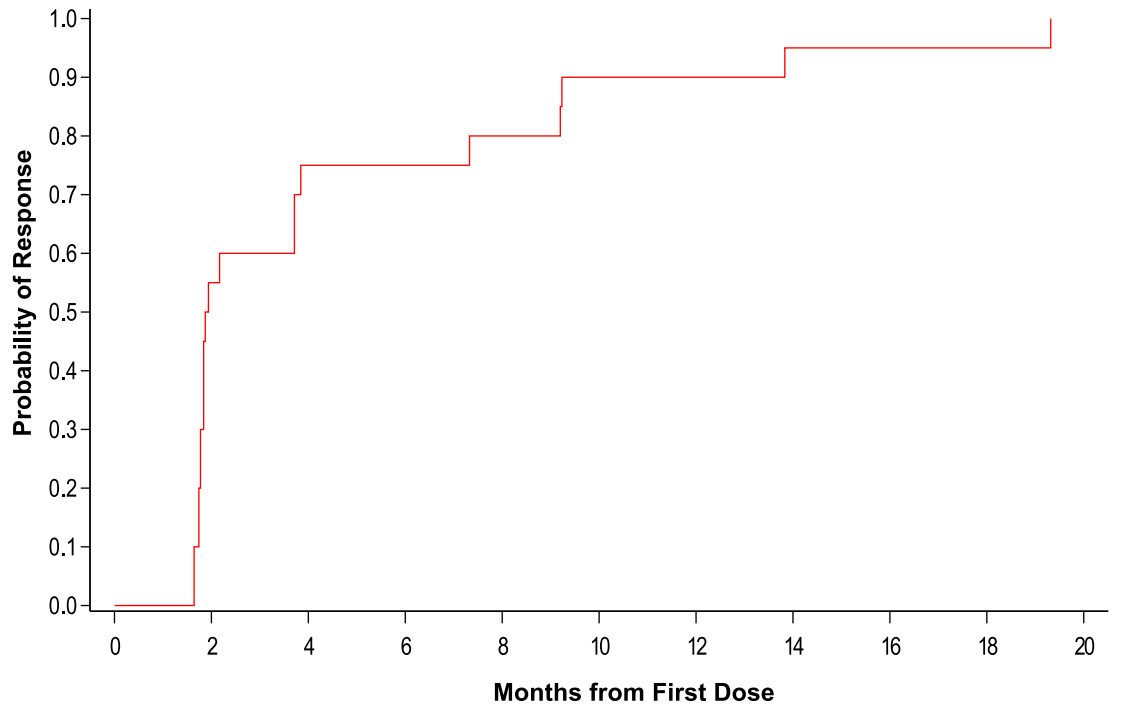


EMZL:	6	6	5	5	4	4	4	4	3	3	2	2	2	2	2	2	2	2	2	1	0	0	0	0	
NMZL:	17	14	13	10	10	9	6	6	6	6	5	5	4	4	2	2	2	2	2	1	1	1	1	1	0
SMZL:	13	10	10	7	7	6	6	6	6	4	3	3	2	1	1	1	1	1	0	0	0	0	0	0	0

Figure S2. PFS among patients with R/R MZL by MZL Subtype.

Kaplan-Meier curve representing Investigator-assessed PFS in patients with R/R MZL by MZL subtype.

Abbreviations: CI, confidence interval; EMZL, extranodal marginal zone lymphoma; NE, not estimable; NMZL, nodal marginal zone lymphoma; SMZL, splenic marginal zone lymphoma.

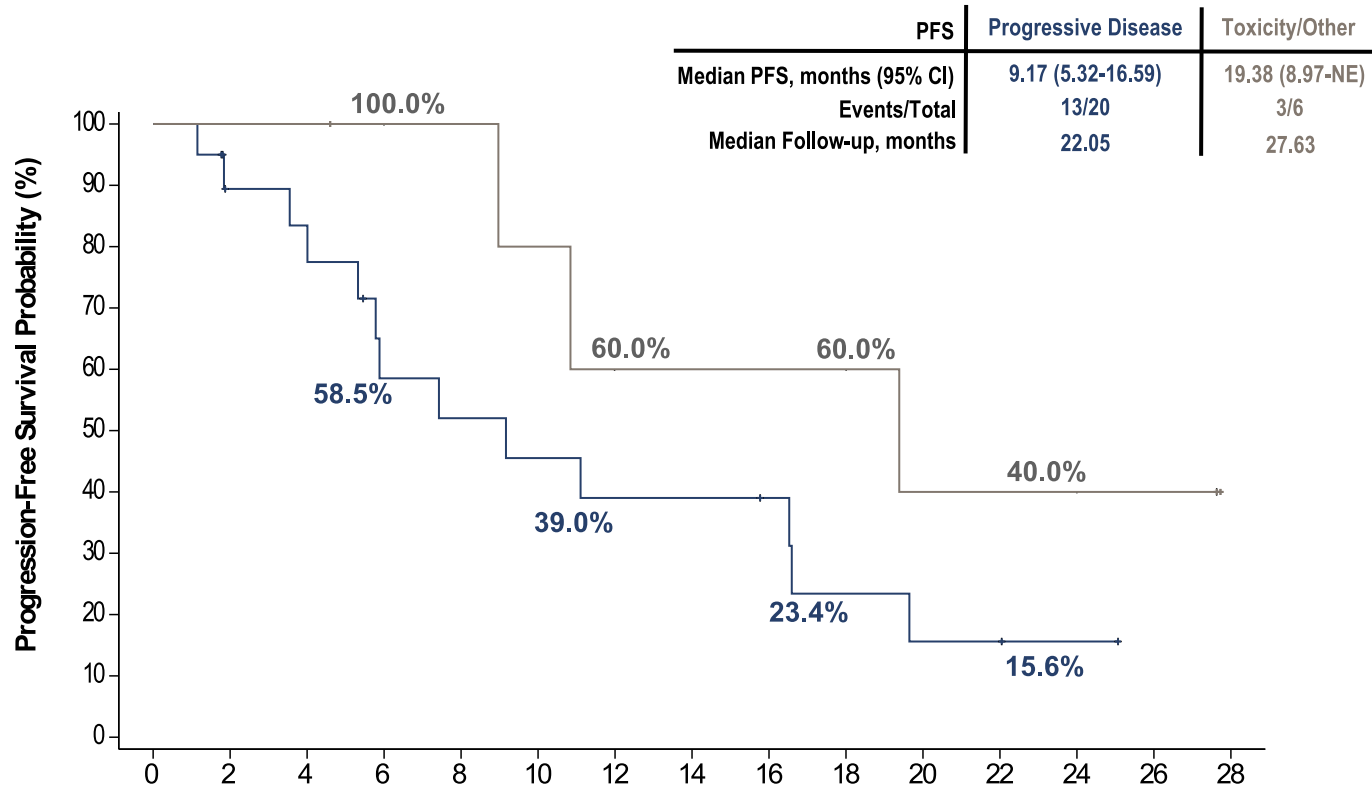


Number of Responders 0 11 15 15 16 18 18 19 19 19 20

Figure S3. Time to first response among patients with response

Data cutoff of 27 Jan 2025.

Reason for Discontinuation of any Prior BTKi



	0	2	4	6	8	10	12	14	16	18	20	22	24	26	28
Progression Disease:	20	15	14	9	8	7	6	6	5	3	2	2	1	0	0
Toxicity/Other:	6	6	6	5	5	4	3	3	3	3	2	2	2	2	0

Figure S4. PFS stratified by reasons for discontinuation of prior BTKi therapy.

Kaplan-Meier curve representing Investigator-assessed PFS in patients with R/R MZL according to reason for prior BTKi treatment discontinuation.

Abbreviations: BTKi, Bruton tyrosine kinase inhibitor; CI, confidence interval; NE, not estimable.

Data cutoff of 27 Jan 2025.