

Supplementary Figure S1.

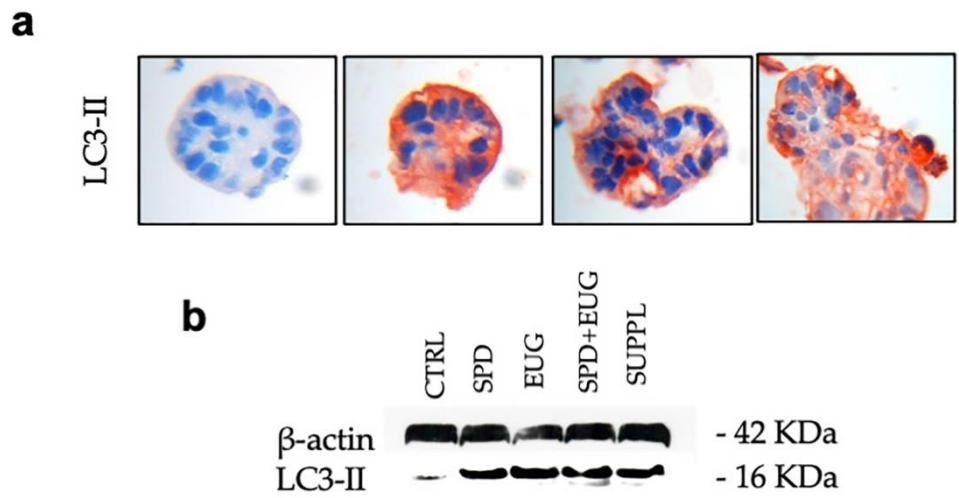


Figure S1. LC3-II expression. (a) LC3-II red chromogen staining in the spheroids of the untreated control (CTRL), spermidine (SPD), eugenol (EUG) plus SPD+EUG and (b) Western Blot LC3-II staining of the CTRL, SPD, EUG, SPD+EUG and the SUPPL after 96 h exposure to the treatments. The treatments were as follows: SPD (150 μ M), EUG (100 μ M), SPD+EUG (150 μ M + 100 μ M) and the SUPPL (0.6 μ M SPD + 50 μ M EUG).