

## Article

# GIS-Based Geopedological Approach for Assessing Land Suitability for Chestnut (*Castanea sativa* Mill.) Groves for Fruit Production

Marco Rossi <sup>1</sup>, Mauro De Feudis <sup>1,\*</sup>, William Trenti <sup>1</sup>, Massimo Gherardi <sup>2</sup>, Gilmo Vianello <sup>3</sup>  
and Livia Vittori Antisari <sup>1</sup>

<sup>1</sup> Department of Agricultural and Food Sciences, Alma Mater Studiorum—University of Bologna, Via Fanin 40, 40127 Bologna, Italy

<sup>2</sup> Boreal Mapping, Via Casella, 23/a, 40030 Grizzana Morandi, Italy

<sup>3</sup> Centro Sperimentale per lo Studio e l'Analisi del Suolo (CSSAS), Alma Mater Studiorum—University of Bologna, 40127 Bologna, Italy

\* Correspondence: mauro.defeudis2@unibo.it

**Abstract:** The identification of mountainous areas suitable for chestnut stands for fruit production (CSFP) is raising increasing interest among researchers. This work aimed to (i) identify the areas suitable for CSFP shown in a land suitability map easy to read by land planners, and (ii) propose a remote-sensing-based methodology able to identify the lands currently under cultivation for CSFP. This study was conducted using the QGIS software for the Municipality of Castel del Rio, Emilia-Romagna Region, Italy. To obtain the land suitability map, topographic, lithological, and pedological data were acquired, and the areas located between 200 and 1000 m of altitude, with north exposition, a slope <20°, sandstone-based lithology, and soils with dystric features were selected. The currently cultivated areas for CSFP were identified through remote-sensing images of the early spring period, which were delineated and georeferenced. The findings showed that only 10% of the whole study site area can be considered suitable for CSFP. Further, most of the currently cultivated CSFP (59%) are in non-suitable areas characterised by high slope gradients. The methodology applied in this study can easily provide detailed information about the suitable areas for CSFP and the areas currently cultivated with chestnut, thus allowing accurate land-use planning and land conservation.

**Keywords:** land suitability map; sandstone; georeferencing; soil suitability; mountainous areas

**Citation:** Rossi, M.; De Feudis, M.; Trenti, W.; Gherardi, M.; Vianello, G.; Antisari, L.V. GIS-Based Geopedological Approach for Assessing Land Suitability for Chestnut (*Castanea sativa* Mill.) Groves for Fruit Production. *Forests* **2023**, *14*, 224. <https://doi.org/10.3390/f14020224>

Academic Editors: José Ciro Her-nández-Díaz, José Ángel Prieto-Ruíz, Christian Wehenkel, Emilio Badala-menti

Received: 7 December 2022

Revised: 14 January 2023

Accepted: 22 January 2023

Published: 25 January 2023



**Copyright:** © 2023 by the authors. Submitted for possible open access publication under the terms and conditions of the Creative Commons Attribution (CC BY) license (<https://creativecommons.org/licenses/by/4.0/>).

## 1. Introduction

Sweet chestnut (*Castanea sativa* Mill.) is one of the most widespread deciduous tree species in Europe [1]. Such large distribution was attributed to the multipurpose of chestnut stands because they can be used for firewood, timber, and food production for both human and animal feeding [2,3]. In Italy, chestnut stands cover about 800,000 ha [4], 34,273 ha of which is designated for fruit production [5]. Sweet chestnut has significantly influenced the development of Italian mountainous areas, establishing the so-called “civilisation of the chestnut tree” [6]. However, after World War II, rural depopulation due to changing social needs [7], the spread of the chestnut blight (*Chryphonectria parasitica* (Murr.) Barr) and ink (*Phytophthora cambivora* (Petri) Buism.) diseases [8] and the introduction of the Asian Chestnut Gall Wasp (*Dryocosmus kuriphilus* Yasumatsu) promoted chestnut stand abandonment [9].

Due to the increased worldwide demand for chestnut nuts in the last decade [10], linked to their nutritional characteristics [11] and the increasing interest in chestnut wood [12], both the planting of new chestnut stands and the recovery of suitable abandoned

chestnut areas is advisable. In this context, land evaluation for identifying the areas suitable for chestnut stands is essential to prevent the loss of ecosystem services and to ensure high chestnut yield. Therefore, land evaluations that include knowledge of soils, lithology, and morphological features have been recognised as an important requirement in the agricultural planning process [13–15] because they ensure both long-term primary production and the optimum and sustainable utilisation of the available land resources [16,17].

The development of a land evaluation model is prioritised for those plant species growing in mountainous areas, such as chestnut, mainly due to the high degradation vulnerability of these areas [18]. In fact, mountain soils are generally defined as poorly developed, skeletal, shallow, acidic, and relatively infertile [19]. Hence, knowing the potential of a mountainous area to sustain plant growth and productivity through the evaluation of their pedoclimatic and morphological characteristics could be considered of pivotal importance for the recovery of mountain agricultural activities [20].

Going back for generations, the evaluation of the inherent characteristics of the land has always involved farmers in developing land-use systems that would be well adapted to the potentials and constraints of their land. Land planning needs tools able to elaborate the information gathered from remote-sensing data with enhanced spatial and temporal resolutions, using instruments capable of processing multiple pieces of information, to avoid subjective errors. Progress in geographical information system (GIS) technologies allows for the processing of a large number of spatial data and the provision of more accurate and accessible information about the land [21]. GIS can perform numerous tasks using both spatial and attribute data. One of the most useful features of GIS is the ability to overlay different layers or maps that are relevant to the same spatial area [22]. In addition, the use of GIS allows for the development of models from which a new thematic map (e.g., land suitability map) can be formed from a set of thematic maps [22]. Therefore, GIS is a powerful tool in spatial decision-making processes for sustainable development in rural areas [23]. In addition, GIS is an effective software for census land uses in both field-scale and remote-sensing approaches [24,25], which could help to reduce the poor accuracy and limited updating of cadastral data concerning land use [26].

Besides powerful tools such as GIS, land evaluation processes require scientific procedures for an objective assessment of the potential and constraints of a given land for agricultural purposes [27]. A scientific system able to provide information about the appropriateness of land to sustain plant growth was developed by the Food and Agriculture Organization (FAO) [28]. Specifically, the FAO developed the term “land suitability”, which estimates the fitness of soil and its landscape for the production of a specific agricultural crop [28]. Land suitability assessment and classification are based on the required inputs, such as labour, fertilisers, or irrigation, necessary for specified cultures.

Over time, land evaluation methods have become more sophisticated [29], and with the enhanced availability of large georeferenced datasets and GIS technologies, evaluations have become more accurate and oriented toward specific vegetation types [30–32].

To further support land evaluation processes, remote sensing was largely used by several researchers [33–36]. These authors used the remote-sensing methodology to acquire information about the topography, land use, and the presence of waterbodies and buildings. In terms of land use, several investigations used GlobCover2009 [34], Landsat [36], and Corine Land Cover [37], but evaluations of their images did not include the classification of chestnuts.

In the context of the restoration of CSFP in the Apennine Mountain Range in Italy and using advanced GIS-based tools and processes, the main aims of the present work were to develop a method able to a) identify the areas, from a geomorphological and pedological point of view, that can potentially allow for CSFP cultivation; b) provide maps that can be updated with further details and are easy to read by land planners, showing

the areas suitable for CSFP; and c) propose a remote-sensing-based methodology able to identify the lands currently under cultivation for CSFP.

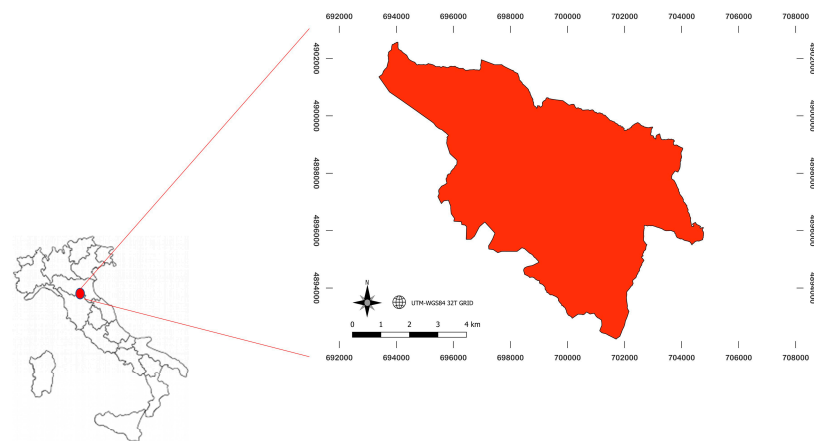
## 2. Materials and Methods

### 2.1. Study Area Framing

The study area chosen matches the Municipality of Castel del Rio (Barycentric coordinates 44°12'50" N 11°30'15" E), located in the Emilia-Romagna Region, in the hilly mountainous areas of the northern part of the Apennine Mountain Range in Italy (Figure 1).

Fruit chestnut groves have been historically present in Castel del Rio as in almost all the mountainous areas of the Apennines. The Municipality of Castel del Rio did not undergo a serious abandonment of chestnut groves after World War II because of the creation of a protected geographical designation entitled "Marrone di Castel del Rio", which helps farmers to market their products better.

The study site is about 52.5 km<sup>2</sup> wide and has an average altitude of 476 m above sea level, ranging between 151 and 959 m above sea level (asl), and it is characterised by a warm temperate climate, with an average annual rainfall of about 1,060 mm and an average temperature of about 13.7 °C; the hottest month is July with an average temperature of about 24.4 °C [38].



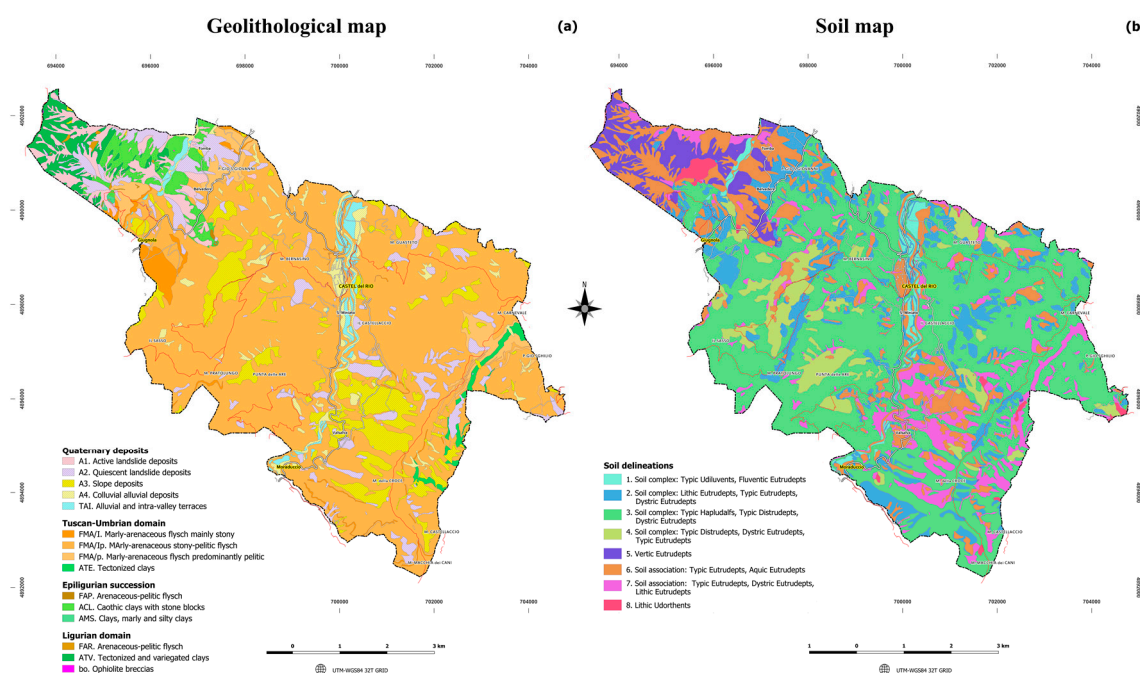
**Figure 1.** Study area: the Municipality of Castel del Rio, located in the Emilia-Romagna Region, Italy.

### 2.2. Indicators for the Assessment of Land Suitability for Chestnut Groves for Fruit Production

The land suitability of CSFP in the study area was investigated by considering altitude, exposure, slope gradient, lithology, and soil types. The data about altitude, exposure, and slope gradient were acquired from a digital terrain model (DTM), which is a topographic model of the bare Earth that can be manipulated with computer programs for further processing (i.e., altitude, exposure, and slope gradient). In the present study, the DTM was downloaded from the cartographic services of the Emilia-Romagna Region [39], with a 5 × 5 m resolution. The geolithological map, with a scale of 1:10,000, was freely downloaded from the geological surveys of the Emilia-Romagna Region [40]. Given the geological complexity of the study area, geolithological formations were grouped according to their characteristics, in particular alluvial deposits, sandstones, marls, and clay formations (Figure 2a). A land unit map (Figure 2b) was built by crossing different soil-forming factors (i.e., altitude, slope, geology, and land use). Each land unit included specific soil types according to these soil-forming factors (Table 1).

**Table 1.** Soil types, according to Soil Survey Staff [41], of the land units identified within Castel del Rio, Emilia-Romagna Region, Italy.

| Land Units  | Area (ha) | Soil Types  |
|---|-----------|---|
| 1. Recent sandy–gravelly alluvial deposits of river terraces. Land use characterised by arable land and orchards in flat areas and bushes, or with riparian woods in steep areas.             | 84        | Typic Udiluvents with A–C horizons and moderately deep Fluventic Eutrudepts with A–Bw–C horizon sequence  |
| 2. Sandstone–pelitic formation affected by sheet erosion. Land use characterised by arable land or uncultivated bushland.   | 699       | Thin or moderately deep Lithic Eutrudepts and Typic Eutrudepts with A–Bw–C horizons, Dystric Eutrudepts with A–B–C horizon sequence               |
| 3. Sandstone–pelitic formation with the prevalence of the sandstone component. Land use characterised by forest cover.  | 2618      | Typic Hapludalfs with A–Bt–C horizons, Typic Dystrudepts and Dystric Eutrudepts with A–Bw–C horizon sequence                                      |
| 4. Sandstone formations and sometimes on-slope debris. Land use characterised by chestnut cover.  | 364       | Typic Dystrudepts with A–Bw–C horizon sequence, Dystric Dystrudepts, and rarely Typic Eutrudepts  |
| 5. Clayey formations affected by erosion and cracks during the summer. Land use characterised by meadow–pasture or arable land.   | 245       | Shallow to moderately deep Vertic Eutrudepts with A–Bw–C horizon sequence   |
| 6. Areas affected by existing or dormant instability with sheet and channelled erosion phenomena. Land use characterised by grass or bush cover.  | 725       | Moderately deep Typic Eutrudepts with A–Bw–C horizons sometimes affected by waterlogging (Aquic Eutrudepts)                                       |
| 7. Areas affected by hydrogeological instability. Land use characterised by forest cover.   | 470       | Typic Eutrudepts and Dystric Eutrudepts with A–Bw–C horizons, moderately deep, or more rarely shallow Lithic Udorthents with A–C horizon sequence |
| 8. Areas characterised mostly by outcrops of clayey rocks, affected by strong erosion with the formation of gullies morphologies. Land use characterised by uncultivated lands or shrublands. | 45        | Shallow Lithic Udothents with A–C horizon sequence  |



**Figure 2.** Geolithological (a) and soil (b) maps of Castel del Rio, Emilia-Romagna Region, Italy.

To build the suitability map for CSFP, the areas were considered suitable if located within the Castanetum phytoclimatic zone [42], namely at an altitude ranging between 300 and 1000 m above sea level [43–46] with north-facing exposition, from northwest to northeast [45,46] (Table 2). In this context, it is important to mention that the considered thresholds for altitude and exposure can be used for the northern part of the Apennine Mountain Range in Italy because of having the best climatic (air temperature and rainfalls) conditions for chestnut plants [46]. Regarding the slope gradient, it was considered suitable if it was less than 20°, allowing for the easy management of groves, including chestnut nut harvesting [47] and preventing intense soil erosion processes [48]. In terms of lithology, carbonate-free rocks as soil parent material (i.e., rhyolite, trachyte, pyroclastic deposits, siliceous rocks, sandstones, and greenschists) were considered. Such lithologies were selected on the basis of the most frequent lithological types found under chestnut grove cultivation in Italy [49] (Table A1 of Appendix A).

**Table 2.** Restriction rates for *Castanea sativa* Mill. cultivation for fruit production related to altitude, exposure, slope gradient, and lithology.

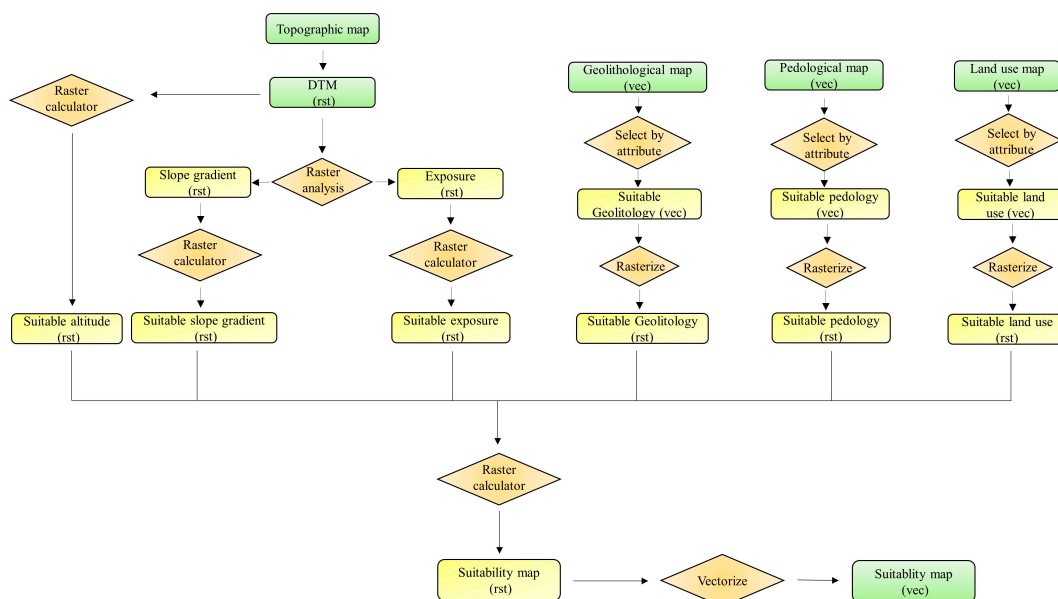
| Geomorphological Characters   | Restriction Rates |                      |                                       |                                |                      |
|-------------------------------|-------------------|----------------------|---------------------------------------|--------------------------------|----------------------|
|                               | Absent            | Slight               | Moderate                              | Severe                         |                      |
| Altitude <sup>(a)</sup>       | 300–1000 m asl    | 150–300 m asl        | 1000–1200 m asl<br>or<br>50–150 m asl | >1200 m asl<br>or<br><50 m asl |                      |
| Exposure <sup>(b)</sup>       | NE-NW             | E-W                  | SW-SE                                 | S                              |                      |
| Slope gradient <sup>(c)</sup> | <20°              | 20–30°               | 30–35°                                | >35°                           |                      |
| Lithology <sup>(d)</sup>      | Igneous rocks     | Rhyolite<br>Trachyte | Diorite<br>Volcanic tuffs             | Gabbro<br>Andesite             | Granite<br>Basalt    |
|                               | Sedimentary rocks | Pyroclastic deposits | Conglomerates<br>Arenites             | Dolomitic limestones           | Marls<br>Marly clays |

|                   |                      |            |              |           |
|-------------------|----------------------|------------|--------------|-----------|
|                   | Siliceous sandstones | Sandstones | Calcarenites | Clays     |
| Metamorphic rocks | Greenschists         | Schists    | Marbles      | Quartzite |

asl = above sea level; <sup>(a)</sup> [43–46]; <sup>(b)</sup> [45], [46]; <sup>(c)</sup> [47]; <sup>(d)</sup> Table A1.

From a pedological point of view, because of the preference for well-drained soils and soils with acidic conditions and a limited number of fine soil particles [50,51], the soil types considered suitable for CSFP were those included within the land units 2, 3, and 4, which developed on dystric facies carbonate-free (Figure 2b). In this sense, to check the reliability of the land units, within each suitable land unit, one soil profile was dug under CSFP and described according to Schoeneberger et al. [52]. The soil samples collected from the identified soil horizons were analysed in terms of pH, which was potentiometrically determined in a 1:2.5 solution ratio in deionised water. The particle size distribution was estimated using the pipette method [53]. The concentration of carbonate was estimated through the volumetric analysis of the CO<sub>2</sub> released by the contact of soil with a 6 M HCl solution [54]. Soil organic C (SOC) and soil nitrogen (SN) were determined using a CHN elemental analyser (Flash 2000, Thermo Fisher Scientific, USA). The cation exchange capacity (CEC) and the exchangeable cation contents were determined according to the method proposed by Orsini and Rémy [55] and modified by Ciesielski and Sterckeman [56]. Specifically, soil samples were suspended in 0.017 M hexamminecobalt (III) chloride solution. The amounts of the extracted Co and exchangeable cations were measured using an inductively coupled plasma optical emission spectrometer (Ametek, Spectro Arcos, Germany). Afterwards, the soils were classified according to the keys of soil taxonomy of the Soil Survey Staff [41].

Once we defined the suitable topographic, altitudinal, lithological, and pedological conditions for CSFP, the suitability map was built by overlapping such suitable areas using the QGIS 3.26.3 software (Figure 3). The reliability of this procedure is supported by previous studies [22,37,57,58], which used several environmental data to evaluate the land suitability for certain crops in both agricultural and natural ecosystems. Within this process, a land-use map [59] was also included to exclude waterbodies and urban areas. The use of the open-source QGIS software was based on the fact that it allows users to analyse and edit spatial information, in addition to composing and exporting georeferenced maps [22]. QGIS supports both raster and vector layers; vector data are stored as point, line, or polygon features, and in addition, multiple formats of raster images are supported [22].



**Figure 3.** Flowchart of GIS-based processing for suitability map building. Between brackets, rst and vec indicate raster and vector file types, respectively.

### 2.3. GIS-based Approach for the Identification of Areas Currently under Chestnut Grove Cultivation for Fruit Production

To identify the chestnut stands within the study site, Google Earth Pro remote-sensing images from April 2020 were collected. We used remote-sensing images in early spring because of the late vegetation restart growth of chestnut plants compared with the other forest plants that generally harbour within the areas where the chestnut plants grow. Conversely, images from the summer, autumn, and winter seasons cannot allow the identification of chestnut groves because of the similar vegetation stage among forest plants. Therefore, within the acquired remote-sensing images from Google Earth Pro, CSFP were easily identified because of both the late vegetation regrowth and the quincunx plantation pattern. The identified areas were delimited, and their extension was measured.

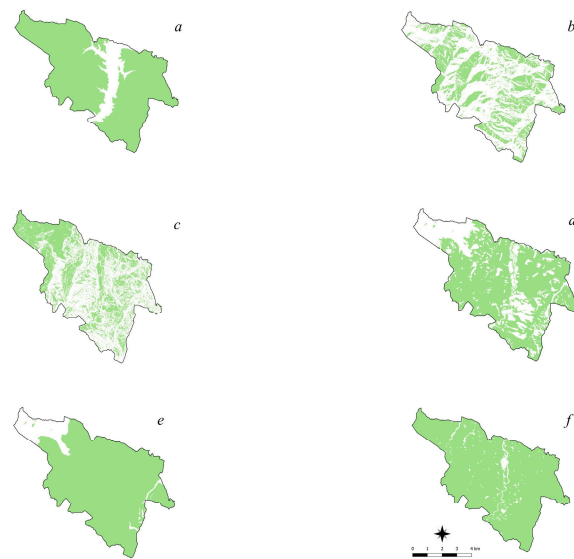
To evaluate the reliability of this approach, the obtained data from remote-sensing images were compared with the data from the 2017 land-use map of the Emilia-Romagna Region [59]. Further, the chestnut grove areas identified using remote-sensing images were compared with the suitability map. Both comparisons were performed using QGIS software.

## 3. Results

The analysis of the altitude showed that most of the study site (87.3%) can be considered suitable for the growth of CSFP, while unsuitable parts include the areas mainly located close to the Santerno river (Figure 4a). Regarding the exposure, the suitable area was 1968.8 ha, which amounted to 37.7% of the study site (Figure 4b). The mean slope was 22.6°, ranging from 0.05° to 58.4°, and the area showing the most suitable slope for CSFP represented 43.9 % of the whole study area (Figure 4c).

Through the analysis of the geolithology, it was revealed that the study site was mainly characterised by silicious sandstone formations (88.5%) and, to a lesser extent, clay formations (11.5%). The geolithological type defined as “silicious sandstone” formation, considered suitable for chestnut groves, was 4644 ha (Figure 4e).

The pedological map showed that the suitable area for CSFP accounted for 3681 ha, corresponding to 70.1% of the study site (Figure 4d). Generally, soils of such areas have pH values < 7 because of the absence of carbonates; however, subalkaline conditions can be also found due to the high base concentrations with positive effects on base saturation values.



**Figure 4.** Suitable areas (green colour) in terms of altitude (a), exposure (b), slope gradient (c), soil type (d), geolithology (e), and land use (f) for the cultivation of chestnut stands for fruit production in Castel del Rio, Emilia-Romagna Region, Italy.

The soil profiles dug within the land units confirmed the soil types reported within the pedological map (Table 3). Indeed, Alfic Dystrudepts, Typic Dystrudepts, and Dystric Eutrudepts were found. The described soils had a coarse texture with consequent low values of SOC content and CEC. The soils showed pH values of less than 7 with the exception of the soils in land unit 2, where some calcic horizons were observed, and the amount of exchangeable Ca was higher than the other land units. Most of the soils had a BS larger than 50%, and lower values were found in soils with lower pH values.

**Table 3.** Main morphological, physical, and chemical features of soil profiles dug within the land units 2, 3, and 4 of Castel del Rio, Emilia-Romagna Region, Italy.

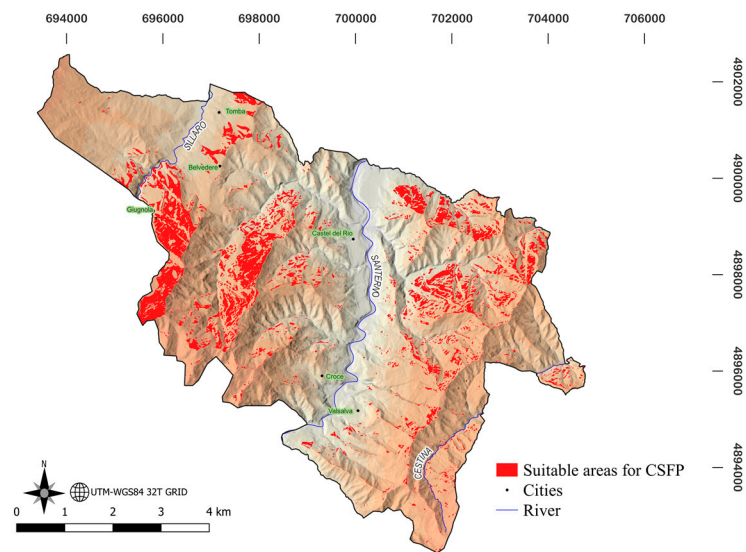
| Land unit<br>and soil type           | Horizo<br>n | Depth<br>(cm) | pH  | CaCO <sub>3</sub><br>g kg <sup>-1</sup> | Sand Silt Clay     |     |      | CEC  | Ca <sub>ex</sub> Mg <sub>ex</sub> K <sub>ex</sub> Na <sub>ex</sub> |     |     |      | BS<br>% | SOC<br>% | SN<br>% |
|--------------------------------------|-------------|---------------|-----|---|--------------------|-----|------|------|--|-----|-----|------|---------|----------|---------|
|                                      |             |               |     |   | g kg <sup>-1</sup> |     |      |      | cmol(+) kg <sup>-1</sup>   |     |     |      |         |          |         |
| Land unit 2<br>Typic<br>Eutrudepts   | A1          | 0-5           | 7.6 | 29.3                                    | 330                | 535 | 135  | 22.6 | 11.6   | 0.1 | 1.5 | 0.2  | 59.0    | 4.9      | 0.3     |
|                                      | A2          | 5-16          | 7.5 | 70.0                                    | 346                | 517 | 137  | 20.0 | 9.2  | 0.1 | 1.0 | 0.2  | 52.5    | 2.2      | 0.2     |
|                                      | Bw          | 16-28         | 7.5 | 100.1                                   | 256                | 483 | 261  | 15.0 | 7.8  | 0.1 | 0.8 | 0.1  | 58.5    | 1.3      | 0.1     |
|                                      | 2Bw         | 28-41         | 7.6 | 0                                       | 168                | 530 | 302  | 27.3 | 12.4   | 0.1 | 1.3 | 0.1  | 51.0    | 0.7      | 0.1     |
|                                      | 2BC         | 41-60+        | 7.5 | 0                                       | 89                 | 527 | 384  | 32.6 | 14.3   | 0.1 | 1.8 | 0.1  | 49.7    | 0.5      | 0.1     |
| Land unit 3<br>Alfic<br>Dystrudepts  | Oe          | 0-0.5         | 4.9 | ---                                     | ---                | --- | 21.1 | 7.1  | 3.4  | 0.7 | 0.2 | 53.6 | 22.7    | 1.1      |         |
|                                      | A1          | 0.5-4         | 4.8 | 0                                       | 387                | 403 | 210  | 7.3  | 0.8  | 0.7 | 0.2 | 0.1  | 24.5    | 4.5      | 0.2     |
|                                      | A2          | 4-7/9         | 4.5 | 0                                       | 363                | 427 | 210  | 9.5  | 1.0  | 0.7 | 0.2 | 0.1  | 20.4    | 5.6      | 0.2     |
|                                      | AB          | 7/9-14        | 5.0 | 0                                       | 366                | 403 | 231  | 8.4  | 0.9  | 0.2 | 0.0 | 0.0  | 22.4    | 1.6      | 0.1     |
|                                      | Bt          | 14-20         | 4.9 | 0                                       | 336                | 398 | 266  | 7.4  | 0.3  | 0.3 | 0.0 | 0.1  | 8.3     | 1.1      | 0.1     |
|                                      | BC1         | 20-35         | 5.4 | 0                                       | 355                | 461 | 184  | 8.5  | 0.4  | 0.6 | 0.0 | 0.1  | 12.0    | 0.8      | 0.1     |
|                                      | BC2         | 35-46         | 4.9 | 0                                       | 362                | 432 | 206  | 8.9  | 0.4  | 0.8 | 0.0 | 0.1  | 14.7    | 1.1      | 0.1     |
| C                                    | 46-60+      | 5.6           | 0   | 450                                     | 392                | 158 | 6.5  | 0.5  | 0.9  | 0.0 | 0.1 | 22.9 | 0.2     | 0.0      |         |
| Land unit 4<br>Dystric<br>Eutrudepts | A1          | 0-3           | 6.9 | 0                                       | 350                | 454 | 196  | 20.3 | 8.3  | 1.4 | 0.3 | 0.1  | 49.8    | 5.3      | 0.3     |
|                                      | A2          | 3-10          | 7.2 | 0                                       | 328                | 490 | 182  | 14.7 | 6.4  | 1.0 | 0.1 | 0.1  | 52.1    | 2.4      | 0.2     |
|                                      | AB          | 10-23         | 6.9 | 0                                       | 327                | 487 | 186  | 9.3  | 5.1  | 0.9 | 0.1 | 0.1  | 67.0    | 1.2      | 0.1     |
|                                      | Bw1         | 23-38         | 6.9 | 0                                       | 266                | 495 | 239  | 9.7  | 4.6  | 1.0 | 0.0 | 0.1  | 58.4    | 0.6      | 0.0     |
|                                      | Bw2         | 38-50         | 6.9 | 0                                       | 264                | 441 | 295  | 9.3  | 4.1  | 1.0 | 0.0 | 0.1  | 57.0    | 0.6      | 0.0     |
| BC                                   | 50-60+      | 6.8           | 0   | 306                                     | 439                | 255 | 8.9  | 3.5  | 1.1  | 0.0 | 0.1 | 52.4 | 0.4     | 0.0      |         |

CEC = cation exchange capacity; Ca<sub>ex</sub>, Mg<sub>ex</sub>, K<sub>ex</sub>, and Na<sub>ex</sub> = exchangeable Ca, Mg, K, and Na, respectively; BS = base saturation; SOC = soil organic carbon; SN = soil total nitrogen.

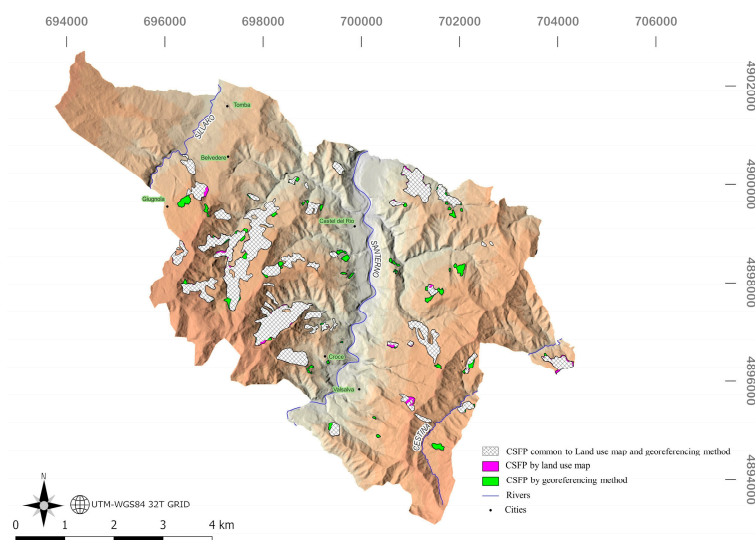


Through the overlapping of the land use with the areas suitable from topographical, geolithological, and pedological points of view, the suitable area for CSFP within the study site was 525.5 ha, accounting for 10% of the whole study site area (Figure 5). Most of the suitable area was observed in the northeastern part of the study site and at the northwestern exposition of the mountainous area located between the Sillaro and Santerno rivers.

The analysis of land use and georeferenced remote-sensing images showed that the CSFP currently cultivated within the study site spread for 379 and 414 ha, respectively, mainly located in the mountainous area between the Sillaro and Santerno rivers. Considering the CSFP area identified using remote-sensing images, it was mostly (98%) within the CSFP area defined by land use, while the additional areas were mainly observed in the western and eastern parts of the study site (Figure 6).



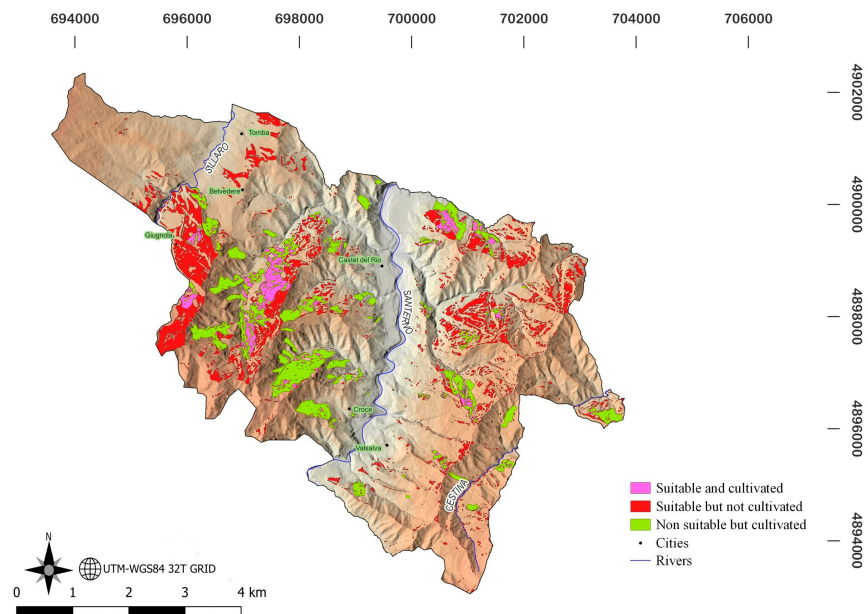
**Figure 5.** Suitability map for chestnut stands for fruit production (CSFP) for Castel del Rio, Emilia-Romagna Region, Italy.



**Figure 6.** Map of Castel del Rio, Emilia-Romagna Region (Italy), showing the areas for chestnut stands for fruit production (CSFP) identified only with the land-use map (purple area), only with the georeferencing approach (green area), and with both methodologies (squared area).

It is important to note that the CSFP area acquired through remote-sensing images highly matched that acquired through the land-use map, which suggests the high accuracy of such methodology (Figure 6). In addition, with the remote-sensing imaging methodology, it was found that the mean area of the CSFP was about 5.8 ha.

The overlapping between the currently CSFP cultivated areas identified with remote sensing and the CSFP suitability map revealed that 59% of currently cultivated chestnut groves are not within the suitability area (Figure 7). In addition, most of such CSFP located outside of suitable areas had a non-suitable slope gradient ( $>20^\circ$ ).



**Figure 7.** Map of Castel del Rio, Emilia-Romagna Region (Italy), showing the suitable areas for the cultivation of chestnut stands for fruit production (CSFP) and currently used for CSFP, the suitable areas for the cultivation of the CSFP but currently not used for CSFP, and the overlapping of suitable and cultivated CSFP areas.

#### 4. Discussion

The GIS-based approach was successfully used in the current study to evaluate land suitability for chestnut cultivation. Six parameters, namely land use and topographic features (altitude, slope gradient, and exposure), as well as lithological and pedological features, were taken into consideration.

The altitudinal suitability map showed that most of the study site can be potentially suitable for CSFP. The unsuitable areas in terms of altitude were located close to the Santerno river. In these areas, the altitude was lower than 300 m asl where the mean air temperatures were greater than  $15^\circ\text{C}$  and annual rainfall below 600–700 mm, and therefore they were commonly excessively warm and dry for the optimal growth and development of chestnut groves [60,61]. In fact, Pérez-Girón et al. [60] and Freitas et al. [61] stated that high temperatures do not allow budburst, flowering, fruit set, and maturation other than to maintenance costs. Further, the authors reported that low precipitation reduces plant development, leading to the production of smaller organs hampering flower production and grain filling, and limiting the size and number of individual leaves. The unsuitable climatic condition of this area was confirmed by the absence of chestnut stands [59].

Unlike the altitudinal map, the exposure map defined most of the study site as unsuitable for CSFP because of the southern exposition. Exposure plays a key role in terms of chestnut plant growth and nut production [45,46]. Specifically, the plants with southern exposure receive more direct heat than the ones with northern exposure, resulting from the sun drying both the soil and the vegetation, which may cause water stress [45,46,55–57]. This is particularly important during the flowering stage, which occurs in the summer months at Italian latitudes, resulting in thermal stress and finally less or no fruit development [41,42,62–64].

Although the study site was characterised by a hilly mountain landscape, the areas with a slope of less than 20° accounted for 43.9% of the entire Castel del Rio area. A low degree of slope prevents the occurrence of intense soil erosion processes [65], which promote soil deepening [66,67], with possible positive consequences on root development and plant production [68,69]. In addition, the limited soil erosion occurring within the areas with a slope gradient <20° could promote soil organic matter accumulation [70] known to improve soil ecosystem services including plant growth and yield [69,70]. Besides the negative effects of high slope gradients on soil quality, although there is no basic and common guideline for a favourable slope for chestnut production, steep slopes cause difficulties during harvest with a consequent increase in harvesting costs. However, it is important to point out that although slope gradients >20° cannot be considered suitable for CSFP, such areas could be addressed for the establishment of chestnut groves for wood production due to the recent development of machines and technologies that can also be used in steep areas [71,72]. Slope gradients >20° prevent agricultural mechanisation with a consequent increase in management costs. Conversely, low slope gradients allow for the cost-effective management of farms, thus facilitating agricultural practices [73]. In addition, low slope gradients limit soil erosion processes, which, in turn, positively affect crop yield [74].

In terms of the lithological and pedological features, most of the study site can be considered suitable for CSFP. These results are in accordance with those reported by Sanesi [75] and Antoniazzi [76], which, through a study conducted within the Santerno river valley, showed the presence of chestnut stands on sandstone formations. In this context, it is important to highlight that the suitable soils had generally “dystric” features, namely an effective base saturation of less than 60% [41], which matched with the silicious sandstone formation from which they developed. In addition, such matching would indicate the greater role of parent material on soil properties than the other soil-forming factors in the present study site.

Although CSFP was historically present within the considered study site, the overlapping of the areas suitable in terms of altitude, exposure, slope gradient, lithology, and soil types showed that the suitable area for CSFP accounted only for 10% of the study site. This area included just 24.6% of the CSFP that are currently cultivated, suggesting the need for incentives from institutions to farmers to use such suitable areas for the creation of CSFP. Although most of the suitable area was observed in the northeastern part of the study site and the mountainous area located between the Sillaro and Santerno rivers, several suitable areas spread all over the study site. However, they showed a limited area ( $\leq 50$  m<sup>2</sup>), which does not allow economically sustainable chestnut production. Further, the limited suitable area would indicate the distribution of chestnut groves also in non-suitable areas. Indeed, through a comparison of the areas currently used for CSFP and the suitability map, most of them were in non-suitable areas, where the most limiting factor was the slope gradient. To reduce the soil erosion processes occurring in areas with high slope gradients, mulching and the conservation of grass cover are suggested [77]. However, to reduce soil erosion and facilitate cultivation operations, terracing is the most recommended intervention [77–79]. In this regard, despite non-suitable areas having slope gradients of >20°, they still had CSFP because of terracing, which was the major morphological transformation implemented by farmers in these mountainous areas to obtain cultivable land in steep areas [80–82]. Terraces increase soil organic carbon

accumulation, slow down the erosive power of the surface water flow, and improve soil water storage [82–84]. However, terracing needs high investment and maintenance [85,86], and the presence of farmers who would maintain the terraces in these mountainous areas. Therefore, land abandonment in terms of rural depopulation and/or the lack of management of CSFP could cause soil degradation in such areas [82,87]. Besides this, the obtained suitability map highlighted the potential loss of 59% of the currently cultivated CSFP in the next years. Such loss will be observed if the price of chestnuts does not also cover the costs related to CSFP management practices coping with degradation processes due to unsuitable conditions. Although most of the currently cultivated CSFP can be potentially lost, the suitability map showed that a wide area of the study site can be converted to CSFP (423 ha) in light of the demand increase for chestnuts due to their health benefits [88,89]. In this sense, we do not know if such areas were CSFP in the past and, therefore, need to be restored; regardless, the establishment of CSFP might promote the improvement of soil quality [87].

Although the suitability map can be a helpful tool for land use planning, the knowledge of the current use of territory results is necessary to foresee the management practices that should be carried out for land conservation and or conversion [90]. In this context, the present study shows the reliability of remote-sensing images to identify the currently cultivated CSFP. However, the main drawback of such a procedure is that it is highly time-consuming because the CSFP areas should be manually identified. To cope with this issue, since CSFP are characterised by a distance of 10 m between chestnut plants and a later vegetation regrowth than other plant species, CSFP areas can be identified using a semi-automatic classification plugin in QGIS [91,92], which is cost-effective. As a whole, the remote-sensing images approach showed a high fragmentation of CHEF, which is a generally negative feature for agriculture [93]. Within the investigated area, our findings suggest the promotion of land conversion to CSFP in suitable areas. Conversely, the CSFP located within unsuitable areas might be abandoned, especially those of small dimensions, to reduce the fragmentation.

## 5. Conclusions

The present work aimed to identify the areas that can potentially allow for CSFP cultivation by taking into consideration the geomorphological and pedological features, to provide maps that are easy to read by land planners and show the areas suitable for CSFP, and to propose a remote-sensing-based methodology able to identify the lands currently used for CSFP. Although the considered study site was recognised as an important area for chestnut production, the built suitability map demonstrated that only 10% of this area can be considered suitable for chestnut cultivation. Further, the remote-sensing images showed that most of the currently cultivated CSFPs were not within such suitable areas (59%) and, therefore, can undergo degradation processes mainly due to the high slope gradients. In this regard, it is important to highlight that, in some of these stands, farmers transform the land morphology by building terraces to obtain cultivable land on steep slopes. The limited suitable area for CSFP detected in the present study indicates that policymakers should consider careful planning in mountainous areas to promote chestnut cultivation within the identified suitable areas. Further, since most CSFP are currently cultivated within non-suitable areas, policymakers should help farmers in the implementation of ameliorative interventions to undertake both chestnut production and land conservation. The high matching observed between the CSFP areas acquired through remote-sensing images with those acquired through the institutional land-use map suggests the high accuracy of remote sensing to identify CSFP. This fact implicates the helpfulness of remote sensing for land planners in acquiring detailed information about land use.

Due to its easy execution, the methodology used for building land suitability maps coupled with land-use monitoring using remote-sensing images can be applied to CSFP at a wider geographical scale and to other forest and agricultural plants. Regardless of

such potential, the present study highlights the need to have detailed lithological and pedological data to obtain reliable land suitability maps.

**Author Contributions:** Conceptualisation, G.V. and L.V.A.; methodology, M.R., M.G., G.V., W.T., and L.V.A.; validation, L.V.A.; investigation, M.R. and M.G.; resources, L.V.A.; data curation, M.R.; writing—original draft preparation, M.D.F. and M.R.; writing—review and editing, M.D.F., G.V., W.T., and L.V.A.; visualisation, M.R. and M.D.F.; supervision, L.V.A.; project administration, L.V.A.; funding acquisition, L.V.A. All authors have read and agreed to the published version of the manuscript.

**Funding:** This research was co-funded by Fondazione Cassa di Risparmio di Imola, 8345.01 22-2022.0111-METODOLOGIA PER LA VALUTAZIONE QUALI-QUANTITATIVA DELLA CONSISTENZA CASTANICOLA.

**Data Availability Statement:** Not applicable.

**Conflicts of Interest:** The authors declare no conflicts of interest.

## Appendix A

**Table A1.** Geolithological formation types and morphological features of Italian areas currently under chestnut stand cultivation for fruit production cultivation.

| Region         | Geolithology   | Municipality/Locality                                     | Altitude<br>m asl | Slope<br>% | Sources |
|----------------|--|---|-------------------|------------|---------|
| Piedmont       | Mycascists, gneisses, gneiss glanders  | Low Alpine slopes (Turin and Cuneo)                       | 400–900           | 30–60      | [94]    |
|                | Detrital conoids referred to as gneisses   | Low Alpine slopes (Turin and Cuneo)                       | 300–900           | 30–80      | [94]    |
|                | Siliceous matrix colluvium with gneiss predominance                                    | Low mountain slopes (Verbano)                             | 200–700           | 30–60      | [94]    |
|                | Porphyries with mica-schists and quartzites included                                   | Gentle mountain slopes (Vercellese, Novarese)             | 400–700           | 15–40      | [94]    |
|                | Porphyries covered by ancient alluvial deposits  | Transition between plain and pre-alpine reliefs           | 200–400           | 10–20      | [94]    |
| Lombardy       | Gneiss   | Biella and Turin Pre-Alps                                 | 400–700           | 15–40      | [94]    |
|                | Schistous and micaceous gneisses   | Bacino torrente Bitto di Gerola (SO)                      | 820–850           | 50–60      | [95]    |
|                | Slope debris gneisses and mica-schists   | Val Grosina (SO)  | 670–700           | 35–40      | [96]    |
|                | Marly limestones, dolomitic limestones, and dolomites                                  | Bergamasque Hinterland                                    | 270–670           | 35–40      | [97]    |
|                | Ferretised pebbles and sands in an advanced state of alteration                        | Pinewood of Appiano Gentile-Tradate                       | 320–375           | 5–40       | [98]    |
| Trentino       | Hard limestones, porphyries, siliceous sandstones, and glacial siliceous deposits      | Valle delle Chiese (Darzo, Lodrone, Daone)                | 400–700           | 35–50      | [99]    |
|                | Rhyolites, rhyodacites, phyllites, and mica-schists with widespread glacial overburden | Valsugana (Roncesgno T., Strigno, Castagnè, Caldonazzo)   | 500–900           | 25–45      | [99]    |
|                | Limestones and marly limestones with possible glacial cover with mixed lithology       | Brentonico Plateau (Castione)                             | 200–800           | 30–40      | [99]    |
|                | Hard limestones, marly limestones with glacial cover with mixed lithology              | Upper Garda Trentino (Nago, Drena, Tenna)                 | 200–600           | 35–45      | [99]    |
|                | Rhyolites, rhyodacites, and dacites with glacial overburdens                           | Cembra Valley (Albiano)                                   | 500–800           | 30–60      | [99]    |
| Friuli V.G.    | Flysch with alternating arenites with calcareous-siliceous marls                       | Pre-Alpine reliefs Col Budoia                             | 100–150           | 20–30      | [100]   |
|                | Conglomerate of predominantly calcareous nature with arenaceous and itic interlayers   | Pre-Alpine reliefs Sequals Col Pallotta                   | 300–350           | 25–35      | [100]   |
| Veneto         | White mica phyllites, corite, and albite   | Venetian Pre-Alps   | 450–650           | 10–30      | [101]   |
|                | Calcareous conglomerates in karst morphologies   | Montello and Berici Hills                                 | 100–200           | 5–10       | [102]   |
|                | Acid volcanic rocks (rhyolites and trachytes)  | Euganean Hills  | 300–600           | 15–30      | [102]   |
| Emilia-Romagna | Sandstones and pelitic sandstones  | Upper Frignano (MO) Upper Reno Valley                     | 900–1000          | 50–70      | [103]   |
|                | Pelitic limestone flysch   | High Apennines Reggiano-Parmense                          | 800–1000          | 40–60      | [104]   |
|                | Pelitic sandstones and marly limestones  | Upper Santerno and Savena Valleys                         | 850–1000          | 30–50      | [105]   |
|                | Conglomeratic-pelitic sandstone deposits   | Sillaro and Lavino Valleys                                | 450–600           | 10–38      | [106]   |
|                | Sandstones with arenaceous-pelitic intercalations                                      | Upper Idice Valley  | 250–500           | 30–45      | [107]   |
| Tuscany        | Quartz-latic volcanic and pyroclastic deposits   | Monte Amiata (Arcidosso, Castel del Piano, Seggiano (GR)) | 950–1250          | 10–35      | [108]   |
|                | Silty schists, marls, and sandstones   | Londa (FI), Vernio (PO)                                   | 500–700           | 35–60      | [108]   |
|                | Turbiditic flysch, marls, and marly clays  | Camporgiano (LU)  | 50–160            | 35–40      | [108]   |

|            |  |  |          |       |       |
|------------|--|--|----------|-------|-------|
|            | Quartzose-felspathic sandstones  | Arezzo, Poppi (AR), Firenzuola (FI), Molazzano (LU)          | 400-900  | 14-40 | [75]  |
|            | Pebbly sediments and polygenic conglomerates interbedded with clayey sands       | Aulla, Nardi (MS)  | 150-270  | 10-25 | [108] |
|            | Calcareous polygenic conglomerates   | Aulla (MS)   | 100-400  | 15-30 | [108] |
| Latium     | Earthy tuffs with black and white pumice   | Sabatini Mountains   | 300-700  | 10-20 | [109] |
|            | Earthy tuffs   | Montesanti   | 980-1000 | 25-30 | [110] |
| Abruzzo    | Pelitic-arenaceous alternation with debris-colluvial belts at the base of slopes | Rocca S. Maria, Montorio del Vomano (TE)<br>Montereale (AQ)  | 800-1200 | 20-35 | [111] |
|            | Ancient terraces with fluvio lacustrine and clastic volcanic sediments           | Oricola, Carsoli (AQ)  | 500-800  | 0-13  | [111] |
|            | Linear slopes on marly limestone substrates                                      | Monreale, Monte Genzano, Pettorato sul Gizio (AQ)            | 800-1200 | 20-35 | [111] |
| Molise     | Dolomitic limestone affected by pyroclastic cover                                | S. Massimo   | 850-900  | 10-20 | [112] |
|            | Mesozoic carbonate rocks with pyroclastic overburden                             | Lattari and Picentini Mountains (Campania Region, 2004)      | 300-1100 | 35-60 | [113] |
|            | Carbonate rocks with pyroclastic overburden                                      | Upper Telesina Valley  | 600-750  | 20-30 | [113] |
|            | Mesozoic dolomite and limestone with pyroclastite cover                          | Caruso and Cuculo Mountains mountain system                  | 100-600  | 15-35 | [113] |
| Campania   | Sandstones, marly sandstones, and conglomerates                                  | Pre-Apennine hills of basso Ufita and Conca Avellinese       | 300-400  | 15-30 | [113] |
|            | Conglomerates and sands  | Pre-Apennine hills of Benevento                              | 300-400  | 25-40 | [113] |
|            | Clay formations with pyroclastic coverings                                       | Irpinia and Sannio hills                                     | 250-450  | 20-30 | [113] |
|            | Fluvio-lacustrine deposits   | Upper Sele Valley  | 300-500  | 15-25 | [113] |
|            | Fluvio-lacustrine deposits   | Lauro-Baianese Valley  | 150-300  | 10-20 | [113] |
| Basilicata | Vulture volcanic reliefs with pyroclastic coverings                              | Santa Maria  | 700-800  | 10-15 | [114] |
|            | Phylladic schists and granites   | Coastal chain and Presila of Cosenza                         | 300-900  | 10-30 | [44]  |
|            | Alteration sand of granites  | Sila Greca, Upper Ionian Cosenza                             | 500-1000 | 20-30 | [44]  |
| Calabria   | Alteration granites  | Presila of Crotona and Catanzaro                             | 800-100  | 15-25 | [44]  |
|            | Phyllites, leucoscists, biotic schists   | Serre of Catanzaro and M.te Reventino                        | 600-900  | 10-25 | [44]  |
|            | Alteration sand of granites  | Serre Vibonesi   | 600-900  | 10-20 | [44]  |
|            | Heavily altered granite rocks and tertiary conglomerates                         | Western and Eastern Aspromonte                               | 300-1200 | 15-40 | [44]  |
| Sardinia   | Palaeozoic granites and schists  | Mandrolisai. Municipalities of Desulo, Tonara, Balvi, Aritzo | 600-700  | 20-30 | [115] |
|            | Metavolcanites and ignimbrites   | Goceano, Monte Pisani  | 700-900  | 20-25 | [115] |
|            | Heavily weathered sandstones   | Erei Mountains, Rossomanno (EN)                              | 550-890  | 15-25 | [116] |
| Sicily     | Inert quartz-arenites to micaceous pelite  | Forest of Ficuzza. Rocca Busambra (PA)                       | 600-1000 | 10-15 | [117] |
|            | Altered calcarenites and limestones  | Mount Peloritani, Musolino, Novara (ME)                      | 380-1050 | 10-15 | [116] |
|            | Basic volcanic rocks   | Mount Etna, Randazzo, Pirao (CT)                             | 600-1210 | 10-20 | [116] |

## References

1. Conedera, M.; Tinner, W.; Krebs, P.; de Rigo, D.; Caudullo, G. *Castanea sativa* in Europe: Distribution, habitat, usage and threats. In *European Atlas of Forest Tree Species*; San-Miguel-Ayanz, J., de Rigo, D., Caudullo, G., Houston Durrant, T., Mauri, A., Eds.; European Commission: Luxembourg, Luxembourg, 2016; p. e0125e0. Available online: <https://w3id.org/mtv/FISE-Comm/v01/e0125e0> (accessed on 20 November 2022).
2. Conedera, M.; Krebs, P. History, present situation and perspective of chestnut cultivation in Europe. *Acta Hort.* **2007**, *784*, 23–28. <https://doi.org/10.17660/ActaHortic.2008.784.1>.
3. Conedera, M.; Manetti, M.C.; Giudici, F.; Amorini, E. Distribution and economic potential of the Sweet chestnut (*Castanea sativa* Mill.) in Europe. *Ecol. Mediterr.* **2004**, *30*, 179–193; ISSN 1775-4100.
4. Tamantini, S.; Bergamasco, S.; Portoghesi, L.; Vettriano, A.M.; Zikeli, F.; Mugnozza, G.S.; Romagnoli, M. Detection, description, and technological properties of colour aberration in wood of standards and shoots from a chestnut (*Castanea sativa* Mill.) coppice stand. *Eur. J. For. Res.* **2022**, *141*, 683–698. <https://doi.org/10.1007/s10342-022-01468-2>.
5. ISTAT. *Coltivazioni: Coltivazioni Legnose Fruttifere*. Available online: [www.istat.it](http://www.istat.it) (accessed on 22 November 2022).
6. Conedera, M.; Krebs, P.; Tinner, W.; Pradella, M.; Torriani, D. The cultivation of *Castanea sativa* (Mill.) in Europe, from its origin to its diffusion on a continental scale. *Veg. Hist. Archaeobot* **2004**, *13*, 161–179; ISSN 0939-6314.
7. Zlatanov, T.; Schleppei, P.; Velichkov, I.; Hinkov, G.; Georgieva, M.; Eggertsson, O.; Zlatanova, M.; Vacik, H. Structural diversity of abandoned chestnut (*Castanea sativa* Mill.) dominated forests: Implications for forest management. *For. Ecol. Manag.* **2013**, *291*, 326–335. <https://doi.org/10.1016/j.foreco.2012.11.015>
8. Pezzi, G.; Maresi, G.; Conedera, M.; Ferrari, C. Woody species composition of chestnut stands in the Northern Apennines: The result of 200 years of changes in land use. *Landsc. Ecol.* **2011**, *26*, 1463–1476. <https://dx.doi.org/10.1007/s10980-011-9661-8>.
9. Conedera, M.; Krebs, P.; Gehring, E.; Wunder, J.; Hülsmann, L.; Abegg, M.; Maringer, J. How future-proof is Sweet chestnut (*Castanea sativa*) in a global change context? *For. Ecol. Manag.* **2021**, *494*, 119320. <https://doi.org/10.1016/j.foreco.2021.119320>
10. FAOSTAT. Statistics Division of Food and Agriculture Organization of the United Nations, Roma. 2022. Available online: <https://www.fao.org/faostat/en/#home> (accessed on 25 November 2022).
11. Massantini, R.; Moschetti, R.; Frangipane, M.T. Evaluating progress of chestnut quality: A review of recent developments. *Trends Food Sci. Technol.* **2021**, *113*, 245–254. <https://doi.org/10.1016/j.tifs.2021.04.036>.
12. Nocetti, M.; Brunetti, M.; Bacher, M. Efficiency of the machine grading of chestnut structural timber: Prediction of strength classes by dry and wet measurements. *Mater. Struct.* **2016**, *49*, 4439–4450. <http://dx.doi.org/10.1617%2Fs11527-016-0799-3>.
13. Siqueira, D.S.; Marques, J.; Pereira, G.T. The use of landforms to predict the variability of soil and orange attributes. *Geoderma* **2010**, *156*, 410. <http://dx.doi.org/10.1016/j.geoderma.2009.11.024>.
14. Vasu, D.; Srivastava, R.; Patil, N.G.; Tiwary, P.; Chandran, P.; Singh, S.K. A comparative assessment of land suitability evaluation methods for agricultural land use planning at village level. *Land Use Policy* **2018**, *79*, 146–163. <https://doi.org/10.1016/j.landusepol.2018.08.007>
15. Ray, P.; Chattaraj, S.; Bandyopadhyay, S.; Jena, R.K.; Singh, S.K.; Ray, S.K. Shifting cultivation, soil degradation, and agricultural land-use planning in the northeastern hill region of India using geo-spatial techniques. *Land Degrad. Dev.* **2021**, *32*, 3870–3892. <https://doi.org/10.1002/ldr.3986>.
16. AbdelRahman, M.A.E.; Natarajan, A.; Hegde, R.; Assessment of land suitability and capability by integrating remote sensing and GIS for agriculture in Chamarajanagar district, Karnataka, India. *Egypt. J. Remote Sens. Space Sci.* **2016**, *19*, 125–141. <https://doi.org/10.1016/j.ejrs.2016.02.001>.
17. Özşahin, E.; Ozdes, M. Agricultural land suitability assessment for agricultural productivity based on GIS modeling and multi-criteria decision analysis: The case of Tekirdağ province. *Environ. Monit. Assess.* **2022**, *194*, 41. <https://doi.org/10.1007/s10661-021-09663-1>.
18. Alewell, C.; Meusburger, K.; Brodbeck, M.; Banninger, D. Methods to describe and predict soil erosion in mountain regions. *Landsc. Urban Plan.* **2008**, *88*, 46–53. <https://doi.org/10.1016/j.landurbplan.2008.08.007>.
19. FAO. *Understanding Mountain Soils: A Contribution from Mountain Areas to the International Year of Soils*; Romeo, R., Vita, A., Manuelli, S., Zanini, E., Freppaz, M., Stanchi, S., Eds.; FAO: Rome, Italy, 2015.
20. Bruzzese, S.; Blanc, S.; Brun, F. Strategies for the valorisation of chestnut resources in Italian mountainous areas from a sustainable development perspective. *Resources* **2020**, *9*, 60. <https://doi.org/10.3390/resources9050060>.
21. Arnous, M.O.; Hassan, M.A.A. Image processing and land information system for soil assessment of El-Maghara Area, North Sinai, Egypt. In *Proceedings of the International Conference on Water Resources and Arid Environment*, Riyadh, Saudi Arabia, 26–29 November 2006.
22. De Feudis, M.; Gherardi, M.; Falsone, G.; Speranza, M.; Vianello, G.; Vittori Antisari, L. GIS-based soil maps as tools to evaluate land capability and suitability in a coastal reclaimed area (Ravenna, northern Italy). *Int. Soil Water Conserv. Res.* **2021**, *9*, 167–179. <https://doi.org/10.1016/j.iswcr.2020.11.007>.
23. Kurowska, K.; Marks-Bielska, R.; Bielski, S.; Aleknavicius, A.; Kowalczyk, C. Geographic information systems and the sustainable development of rural areas. *Land* **2020**, *10*, 6. <https://doi.org/10.3390/land10010006>.
24. Mikoláš, M.; Ujházy, K.; Jasík, M.; Wiezik, M.; Gallay, I.; Polák, P.; Vysoký, J.; Čiliak, M.; Meigs, G.V.; Svoboda, M.; et al. Primary forest distribution and representation in a Central European landscape: Results of a large-scale field-based census. *For. Ecol. Manag.* **2019**, *449*, 117466. <https://doi.org/10.1016/j.foreco.2019.117466>.



25. Atay Kaya, İ.; Kut Görgün, E. Land use and land cover change monitoring in Bandırma (Turkey) using remote sensing and geographic information systems. *Environ. Monit. Assess.* **2020**, *192*, 430. <https://doi.org/10.1007/s10661-020-08411-1>.
26. Cienciała, A.; Sobolewska-Mikulska, K.; Sobura, S. Credibility of the cadastral data on land use and the methodology for their verification and update. *Land Use Policy* **2021**, *102*, 105–204. <https://doi.org/10.1016/j.landusepol.2020.105204>.
27. Lauteri, M.; Monteverdi, M.; Scarascia-Mugnozza, G. Preservation of chestnut (*Castanea sativa* Mill.) genetic resources and adaptive potential in relation to environmental changes. *Acta Hort.* **2009**, *866*, 677–682. <https://doi.org/10.17660/ActaHortic.2010.866.90>.
28. FAO. *A Framework for Land Evaluation*; UN Food and Agriculture Organization (FAO): Rome, Italy, 1981; Second printing; ISBN 92-5-100111-1.
29. Sonneveld, M.P.W.; Hack-ten Broeke, M.J.D.; Van Diepen, C.A.; Boogaard, H.L. Thirty years of systematic land evaluation in the Netherlands. *Geoderma* **2010**, *156*, 84–92. <http://dx.doi.org/10.1016/j.geoderma.2010.02.023>.
30. Triantafyllis, J.; Ward, W.T.; McBratney, A.B. Land suitability assessment in the Namoi Valley of Australia, using a continuous model. *Aust. J. Soil Res.* **2001**, *39*, 273–290. <https://doi.org/10.1071/SR99087>.
31. Joss, B.N.; Hall, R.J.; Sidders, D.M.; Keddy, T.J. Fuzzy-logic modelling of land suitability for hybrid poplar across the Prairie Provinces of Canada. *Environ. Monit. Assess.* **2008**, *141*, 79–96. <https://doi.org/10.1007/s10661-007-9880-2>.
32. Elsheikh, R.; Rashid, B.A.; Shariff, M.; Amiri, F.; Ahmad, N.B.; Balasundram, S.K.; MohdSoome, M.A. Agriculture Land Suitability Evaluator (ALSE): A decision and planning support tool for tropical and subtropical crops. *Comput. Electron. Agric.* **2013**, *93*, 98–110. <https://doi.org/10.1016/j.compag.2013.02.003>.
33. Aymen, A.T.; Al-husban, Y.; Farhan, I. Land suitability evaluation for agricultural use using GIS and remote sensing techniques: The case study of Ma'an Governorate, Jordan. *Egypt. J. Remote Sens. Space Sci.* **2021**, *24*, 109–117. <https://doi.org/10.1016/j.ejrs.2020.01.001>.
34. Yalaw, S.G.; Van Griensven, A.; Mul, M.L.; van der Zaag, P. Land suitability analysis for agriculture in the Abbay basin using remote sensing, GIS and AHP techniques. *Model. Earth Syst. Environ.* **2016**, *2*, 101. <https://doi.org/10.1007/s40808-016-0167-x>.
35. Saleh, A.M.; Belal, A.B.; Mohamed, E.S. Land resources assessment of El-Galaba basin, South Egypt for the potentiality of agriculture expansion using remote sensing and GIS techniques. *Egypt. J. Remote Sens. Space Sci.* **2015**, *18*, S19–S30. <https://doi.org/10.1016/j.ejrs.2015.06.006>.
36. Habibie, M.I.; Noguchi, R.; Shusuke, M.; Ahamed, T. Land suitability analysis for maize production in Indonesia using satellite remote sensing and GIS-based multicriteria decision support system. *GeoJournal* **2021**, *86*, 777–807. <https://doi.org/10.1007/s10708-019-10091-5>.
37. Tercan, E.; Dereli, M.A. Development of a land suitability model for citrus cultivation using GIS and multi-criteria assessment techniques in Antalya province of Turkey. *Ecol. Indic.* **2020**, *117*, 106549. <https://doi.org/10.1016/j.ecolind.2020.106549>.
38. Antolini, G.; Auteri, L.; Pavan, V.; Tomei, F.; Tomozeiu, R.; Marletto, V. A daily high-resolution gridded climatic data set for Emilia-Romagna, Italy, during 1961–2010. *Int. J. Climatol.* **2015**, *36*, 1970–1986. <https://doi.org/10.1002/joc.4473>.
39. Regione Emilia-Romagna. DTM 5×5—Geoportale Regione. 2009. Available online: <https://geoportale.regione.emilia-romagna.it/catalogo/dati-cartografici/altimetria/layer-2> (accessed on 27 October 2022).
40. Regione Emilia-Romagna. Carta Geologica 1:10000—Banca Dati Geologica, 1:10.000—Unità Geologiche—10k. 2006. Available online: <https://geoportale.regione.emilia-romagna.it/catalogo/dati-cartografici/informazioni-geoscientifiche/geologia/banca-dati-geologica-1-10.000/layer-11> (accessed on 27 October 2022).
41. Soil Survey Staff. *Keys to Soil Taxonomy*, 12th ed. USDA–Natural Resources Conservation Service: Washington, DC, USA, 2014.
42. De Philippis, A. Forest ecology and phytoclimatology. *Unasylva* **1951**, *5*, 1.
43. Del Favero, R. (Ed.) *I Tipi Forestali della Lombardia. Regione Lombardia*; CIERRE: Sommacampagna, Italy, 2002.
44. Arcidiaco, L.; Ciancio, O.; Garfi, V.; Iovino, F.; Menguzzato, G.; Nicolaci, A. Area di vegetazione e campo di idoneità ecologica del castagno in Calabria. *L'Italia For. E Mont.* **2006**, *6*, 489–506. Available online: <https://hdl.handle.net/11695/319> (accessed on 2 November 2022).
45. Lolli, G.; Musolesi, M. *Il Castagneto da Frutto: Manuale Pratico di Innesto, Potatura e Conduzione: Tecniche Di Recupero Dei Castagneti Abbandonati, Conversione Dei Cedui in Castagneti da Frutto: Indagini Svolte Nell'appennino Bolognese*; Bononia University Press: Italia, 2006; pp. 1–150.
46. Bounous, G. *Il Castagno*; Edagricole: Milano, Italy, 2004; pp.1–432.
47. Comel, A. *Basi Pedologiche per la Valutazione Dei Terreni*; Edagricole: Milano, Italy, 1975; pp.1–138.
48. Diaz, J.V.R.; Varela, E.R.D.; Anta, M.B.; Álvarez, P.Á. Sweet chestnut agroforestry systems in North-western Spain: Classification, spatial distribution and an ecosystem services assessment. *For. Syst.* **2018**, *27*, 10; ISSN 2171-5068.
49. Mariotti, B.; Castellotti, T.; Conedera, M.; Corona, P.; Manetti, M.C.; Romano, R.; Tani, A.; Maltoni, A. *Linee Guida per la Gestione Selvicolturale dei Castagneti da Frutto*; CREA: Roma, Italy, 2019; ISBN 978-88-3385-017-7.
50. Rodrigues, A.; Gonçalves, A.B.; Costa, R.L.; Gomes, A.A. GIS-based assessment of the chestnut expansion potential: A case-study on the Marvão productive area, Portugal. *Agriculture* **2021**, *11*, 1260. <https://doi.org/10.3390/agriculture11121260>.
51. Nicoletti, R.; Beccaro, G.L.; Sekara, A.; Cirillo, C.; Di Vaio, C. Endophytic Fungi and Ecological Fitness of Chestnuts. *Plants* **2021**, *10*, 542. <https://doi.org/10.3390/plants10030542>.
52. Schoeneberger, P.J.; Wysocki, D.A.; Benham, E.C. *Field Book for Describing and Sampling Soils*; Version 3.0; Natural Resources Conservation Service: Washington, DC, USA; National Soil Survey Center: Lincoln, NE, USA, 2012.

53. Gee, G.W.; Bauder, J.W.; Klute, A. *Methods of Soil Analysis, Part 1, Physical and Mineralogical Methods*; Soil Science Society of America: Madison, WI, USA; American Society of Agronomy: Madison, WI, USA, 1986.
54. Loepfert, R.H.; Suarez, D.L. *Carbonate and Gypsun*; USDA-ARS/UNL Faculty: Lincoln, CA, USA, 1996.
55. Orsini, L.; Remy, J.C. The simultaneous determination of cation-exchange capacity and total exchangeable bases (BE) using cobaltihexammine chloride. *Bull. De Assoc. Fr. Pour L'etude Du Sol. Sci. Du Sol* **1976**, *4*, 269–275.
56. Ciesielski, H.; Sterckeman, T. Determination of cation exchange capacity and exchangeable cations in soils by means of cobalt hexamine trichloride. Effects of experimental conditions. *Agronomie* **1997**, *17*, 1–7. <https://doi.org/10.1051/agro:19970101>.
57. Chen, Z.; Huang, M.; Xiao, C.; Qi, S.; Du, W.; Zhu, D.; Altan, O. Integrating remote sensing and spatiotemporal analysis to characterize artificial vegetation restoration suitability in desert areas: A Case Study of Mu Us Sandy Land. *Remote Sens.* **2022**, *14*, 4736. <https://doi.org/10.3390/rs14194736>.
58. Zheng, C.; Wen, Z.; Liu, Y.; Guo, Q.; Jiang, Y.; Ren, H.; Yang, Y. Integrating habitat suitability and the near-nature restoration priorities into revegetation plans based on potential vegetation distribution. *Forests* **2021**, *12*, 218. <https://doi.org/10.3390/f12020218>.
59. Regione Emilia-Romagna. Uso del suolo di dettaglio dell'anno 2017—Coperture vettoriali uso del suolo di dettaglio—Edizione 2020—Geoportale Regione. 2020. Available online: <https://geoportale.regione.emilia-romagna.it/download/dati-e-prodotti-cartografici-preconfezionati/pianificazione-e-catasto/uso-del-suolo/2017-coperture-vettoriali-uso-del-suolo-di-dettaglio-edizione-2020> (accessed on 27 October 2022).
60. Pérez-Girón, J.C.; Alvarez-Alvarez, P.; Díaz-Varela, E.R.; Lopes, D.M.M. Influence of climate variations on primary production indicators and on the resilience of forest ecosystems in a future scenario of climate change: Application to sweet chestnut agroforestry systems in the Iberian Peninsula. *Ecol. Indic.* **2020**, *113*, 106199. <https://doi.org/10.1016/j.ecolind.2020.106199>
61. Freitas, T.R.; Santos, J.A.; Silva, A.P.; Fraga, H. Influence of climate change on chestnut trees: A review. *Plants* **2021**, *10*, 1463. <https://doi.org/10.3390/plants10071463>.
62. Scott, A.I. Factors influencing soil moisture and plant community distribution on Niwot Ridge, Front Range, Colorado, USA. *Arct. Alp. Res.* **1986**, *18*, 83–96. <https://doi.org/10.2307/1551216>.
63. Sidari, M.; Ronzello, G.; Vecchio, G.; Muscolo, Influence of slope aspects on soil chemical and biochemical properties in a Pinus laricio forest ecosystem of Aspromonte (Southern Italy). *Eur. J. Soil Biol.* **2008**, *44*, 364–372. <http://dx.doi.org/10.1016%2Fj.ejsobi.2008.05.001>.
64. McVicar, T.R.; Van Niel, T.G.; Li, L.; Hutchinson, M.F.; Mu, X.; Liu, Z. Spatially distributing monthly reference evapotranspiration and pan evaporation considering topographic influences. *J. Hydrol.* **2007**, *338*, 196–220. <http://dx.doi.org/10.1016%2Fj.jhydrol.2007.02.018>.
65. Garcia-Ruiz, J.M.; Beguería, S.; Nadal-Romero, E.; Gonzalez-Hidalgo, J.C.; Lana-Renault, N.; Sanjuán, Y. A meta-analysis of soil erosion rates across the world. *Geomorphology* **2015**, *239*, 160–173. <https://doi.org/10.18172/cig.4850>.
66. Carter, B.J.; Ciolkosz, E.J. Slope gradient and aspect effects on soils developed from sandstone in Pennsylvania. *Geoderma* **1991**, *49*, 199–213. [https://doi.org/10.1016/0016-7061\(91\)90076-6](https://doi.org/10.1016/0016-7061(91)90076-6).
67. Fazlollahi Mohammadi, M.; Jalali, S.G.H.; Kooch, Y.; Said-Pullicino, D. Slope gradient and shape effects on soil profiles in the northern mountainous forests of Iran. *Eurasian Soil Sci.* **2016**, *49*, 1366–1374. <https://doi.org/10.1134/S1064229316120061>.
68. Di Iorio, A.; Lasserre, B.; Scippa, G.S.; Chiatante, D. Root system architecture of *Quercus pubescens* trees growing on different sloping conditions. *Ann. Bot.* **2005**, *95*, 351–361. <https://doi.org/10.1093/aob/mci033>.
69. Akıncı, H.; Özalp, A.Y.; Turgut, B. Agricultural land use suitability analysis using GIS and AHP technique. *Comput. Electron. Agric.* **2013**, *97*, 71–82. <http://doi.org/10.1016/j.compag.2013.07.006>.
70. Tang, X.; Liu, S.; Liu, J.; Zhou, G. Effects of vegetation restoration and slope positions on soil aggregation and soil carbon accumulation on heavily eroded tropical land of Southern China. *J. Soils Sediments* **2010**, *10*, 505–513. <https://doi.org/10.1007/s11368-009-0122-9>.
71. Ezzati, S.; Tavankar, F.; Ghaffariyan, M.R.; Venanzi, R.; Latterini, F.; Picchio, R. The impact of weather and slope conditions on the productivity, cost, and GHG emissions of a ground-based harvesting operation in mountain hardwoods. *Forests* **2021**, *12*, 1612. <https://doi.org/10.3390/f12121612>.
72. Cavalli, R.; Amishev, D. Steep terrain forest operations—challenges, technology development, current implementation, and future opportunities. *Int. J. For. Eng.* **2019**, *30*, 175–181. <https://doi.org/10.1080/14942119.2019.1603030>.
73. Liu, Q.; Liu, Y.; Peng, J.; Zhang, T.; Li, Y. Linking GRNN and neighborhood selection algorithm to assess land suitability in low-slope hilly areas. *Ecol. Indic.* **2018**, *93*, 581–590. <https://doi.org/10.1016/j.ecolind.2018.05.008>.
74. Sheng, T.C. *Soil Conservation for Small Farmers in the Humid Tropics*; Food & Agriculture Organization of the United Nations: Rome, Italy, 1989.
75. Sanesi, G. I suoli del Bacino dei torrenti Diaterna e lineamenti pedologici del Mugello e dell'Alta Valle del Santerno (Firenze). 1977, Progetto Finalizzato Conservazione del suolo, Pubbl. n. 12, pp.99. Centro di studio per la genesi, classificazione e cartografia del suolo, Florence, Italy.
76. Antoniazzi, A. La carta dei suoli della media valle del Santerno; Centro di studio per la genesi, classificazione e cartografia del suolo, Florence, Italy, 1977, pubbl.n 39.
77. Ahmad, N.S.B.N.; Mustafa, F.B.; Didams, G. A systematic review of soil erosion control practices on the agricultural land in Asia. *Int. Soil Water Conserv. Res.* **2020**, *8*, 103–115. <https://doi.org/10.1016/j.iswcr.2020.04.001>.

78. Tarolli, P.; Straffelini, E. Agriculture in hilly and mountainous landscapes: Threats, monitoring and sustainable management. *Geogr. Sustain.* **2020**, *1*, 70–76. <https://doi.org/10.1016/j.geosus.2020.03.003>.
79. Moreno-de-las-Heras, M.; Lindenberger, F.; Latron, J.; Lana-Renault, N.; Llorens, P.; Arnáez, J.; Gallart, F. Hydrogeomorphological consequences of the abandonment of agricultural terraces in the Mediterranean region: Key controlling factors and landscape stability patterns. *Geomorphology* **2019**, *333*, 73–91. <https://doi.org/10.1016/j.geomorph.2019.02.014>.
80. Dossche, R.; Rogge, E.; Van Eetvelde, V. Detecting people's and landscape's identity in a changing mountain landscape. An example from the northern Apennines. *Landsc. Res.* **2016**, *41*, 934–949. <https://doi.org/10.1080/01426397.2016.1187266>.
81. Cevasco, R.; Moreno, D.; Balzaretto, R.; Watkins, C. Historical chestnut cultures, climate and rural landscapes in the Apennines. In *The Future of Heritage as Climates Change: Loss, Adaptation and Creativity*; Harvey, D., Perry, J., Eds.; Routledge: London, UK, 2015; pp 130–147.
82. Tarolli, P.; Preti, F.; Romano, N. Terraced landscapes: From an old best practice to a potential hazard for soil degradation due to land abandonment. *Anthropocene* **2014**, *6*, 10–25. <http://dx.doi.org/10.1016%2Fj.ancene.2014.03.002>.
83. Antle, J.M.; Stoorvogel, J.J.; Valdivia, R.O. Assessing the economic impacts of agricultural carbon sequestration: Terraces and agroforestry in the Peruvian Andes. *Agric. Ecosyst. Environ.* **2007**, *122*, 435–445. <https://doi.org/10.1016/j.agee.2007.02.003>.
84. Arnaez, J.; Lasanta, T.; Errea, M.P.; Ortigosa, L. Land abandonment, landscape evolution and soil erosion in a Spanish Mediterranean mountain region: The case of Camero. *Land Degrad* **2011**, *22*, 537–550. <https://doi.org/10.1002/ldr.1032>.
85. Emerton, L.; Snyder, K.A. Rethinking sustainable land management planning: Understanding the social and economic drivers of farmer decision-making in Africa. *Land Use Policy* **2008**, *79*, 684–694. <https://doi.org/10.1016/j.landusepol.2018.08.041>.
86. Gassman, P.W.; Osei, E.; Saleh, A.; Rodecap, J.; Norvell, S.; Williams, J. Alternative practices for sediment and nutrient loss control on livestock farms in northeast Iowa. *Agric. Ecosyst. Environ.* **2006**, *117*, 135–144. <http://dx.doi.org/10.1016%2Fj.agee.2006.03.030>.
87. De Feudis, M.; Falsone, G.; Vianello, G.; Vittori Antisari, L. The conversion of abandoned chestnut forests to managed ones does not affect the soil chemical properties and improves the soil microbial biomass activity. *Forests* **2020**, *11*, 786. <https://doi.org/10.3390/f11080786>.
88. Corona, P.; Frangipane, M.T.; Moschetti, R.; Lo Feudo, G.; Castellotti, T.; Massantini, R. Chestnut cultivar identification through the data fusion of sensory quality and FT-NIR spectral data. *Foods* **2021**, *10*, 2575. <https://doi.org/10.3390/foods10112575>.
89. Vasconcelos, M.C.B.M.; Bennett, R.N.; Quideau, S.; Jacquet, R.; Rosa, E.A.; Ferreira-Cardoso, J.V. Evaluating the potential of chestnut (*Castanea sativa* Mill.) fruit pericarp and integument as a source of tocopherols, pigments and polyphenols. *Ind. Crops Prod.* **2010**, *31*, 301–311. <http://dx.doi.org/10.1016/j.indcrop.2009.11.008>.
90. De la Rosa, D.; Mayol, F.; Díaz-Pereira, E.; Fernandez, M.; De la Rosa, D., Jr. A land evaluation decision support system (MicroLEIS DSS) for agricultural soil protection: With special reference to the Mediterranean region. *Environ. Model. Softw.* **2004**, *19*, 929–942. <https://doi.org/10.1016%2Fj.envsoft.2003.10.006>.
91. Tempa, K.; Aryal, K.R. Semi-automatic classification for rapid delineation of the geohazard-prone areas using Sentinel-2 satellite imagery. *SN Appl. Sci.* **2022**, *4*, 141. <https://doi.org/10.1007/s42452-022-05028-6>.
92. Wassie, Y.A.; Koeva, M.N.; Bennett, R.M.; Lemmen, C.H.J. A procedure for semi-automated cadastral boundary feature extraction from high-resolution satellite imagery. *J. Spat. Sci.* **2018**, *63*, 75–92. <https://doi.org/10.1080/14498596.2017.1345667>.
93. Ntihinyurwa, P.D.; De Vries, W.T. Farmland fragmentation, farmland consolidation and food security: Relationships, research lapses and future perspectives. *Land* **2021**, *10*, 129. <https://doi.org/10.3390/land10020129>.
94. IPLA—Regione Piemonte. *Carta dei Suoli del Piemonte 1:250.000. Note Illustrative*; SELCA: Firenze, Italy, 2007.
95. ERSAL Regione Lombardia. *Progetto Ricerca Integrata Sulla Degradazione dei Versanti in Territori Montani. I Suoli del Bacino del Torrente Bitto di Gerola*; Arti Grafiche Vertemati: Vimercate, Italy, 1994.
96. Assi, I.; Comolli, R.; Previtali, F. Prime osservazioni sui suoli della Val Grosina. *Natura Bresciana, Ann. Mus. Civ. Sc. Nat. Brescia* **1993**, *29*, 97–122.
97. ERSAL Regione Lombardia. *Progetto Carta Pedologica. I suoli dell'Hinterland Bergamasco*; Arti Grafiche Chiribella, Bozzolo, Italy, 1992.
98. ERSAL Regione Lombardia. *Progetto Carta Pedologica. I suoli del Parco Pineta di Appiano Gentile—Tradate e Aree Limitrofe*; Grafiche Boniardi: Milano, Italy, 1988.
99. Sartori, G.; Mancabelli, A. *Carta dei Suoli del Trentino Scala 1:250.000*; Museo Tridentino di Scienze Naturali: Trento, Italy; Consiglio per la Ricerca e la Sperimentazione in Agricoltura: Roma, Italy, 2009.
100. ERSAL Agenzia Regionale per lo Sviluppo Rurale. *Suoli e paesaggi del Friuli Venezia Giulia, 1. Pianura, Gorizia, Italy, 2006*.
101. Marcolin, E.; Manetti, M.C.; Pelleri, F.; Conedera, M.; Pezzatti, G.B.; Lingua, E.; Pividori, M. Seed regeneration of sweet chestnut (*Castanea sativa* Miller) under different coppicing approaches. *For. Ecol. Manag.* **2020**, *472*, 11827. <https://doi.org/10.1016/j.foreco.2020.118273>
102. ARPAV Regione Veneto. *Carta Dei Suoli del Veneto. Note Illustrative*; APRAV: Padova, Italy, 2005; ISBN 88-7504-097-4.
103. De Feudis, M.; Falsone, G.; Vianello, G.; Vittori Antisari, L. Stable organic carbon pool rises in soil under chestnut (*Castanea sativa* Mill.) forest for timber production after 15 years since grafting onto satin-cut stumps. *EQA* **2020**, *40*, 1–10. <https://doi.org/10.6092/issn.2281-4485/10731>.
104. Vittori Antisari, L.; Vianello, G.; Pontalti, F.; Lorito, S.; Gherardi, M. Land use effects on organic matter in brown soils of the Emilian Apennines. *Adv. GeoEcology* **2008**, *39*, 311–328; ISBN 9783923381562.

105. Vittori Antisari, L.; Vianello, G.; Simoni, A.; Giovannini, C. Influenza dei fattori clima e tempo sull'evoluzione di suoli bruni acidi delle formazioni arenacee silicoclastiche alloctone dell'Appennino bolognese. *Boll. Della Soc. Ital. Della Sci. Del Suolo* **2005**, *54*, 279–286 <https://hdl.handle.net/11585/17499>.
106. Guidi, S.; Gulminelli, A.; Battaglia, D.P.. I Patriarchi da frutto dell'EmiliaRomagna. *I libri di "agricoltura"*. **2007**, *1*, 1-155.
107. Dell'Abate, M.T.; Giovannini, C.; Pontalti, F.; Vianello, G.; Vittori Antisari, L. Caratterizzazione quali-quantitativa della sostanza organica degli epipedon di suoli bruni acidi dell'appennino emiliano sotto bosco di latifoglie e di conifere. In *Atti Convegno Nazionale Società Italiana di Scienze del Suolo "Suolo Ambiente Paesaggio"*; Società Italiana della Scienza del Suolo: Imola, Italy, 2006, pp. 332–342; ISBN 978.88.90283116.
108. Regione Toscana. Catalogo dei suoli della Carta dei suoli della Toscana in scala 1:250.000. Programma interregionale "Agricoltura e qualità", misura5, Florence, Italy, 2020. <https://www.regione.toscana.it/-/pedologia> (accessed on 26 October 2022)
109. Mattioli, W.; Mancini, L.D.; Portoghesi, L.; Corona, P. Biodiversity conservation and forest management: The case of the sweet chestnut coppice stands in Central Italy. *Plant Biosyst.* **2016**, *150*, 592–600. <https://doi.org/10.1080/11263504.2015.1054448>
110. Blom, J.M.; Vannini, A.; Vettraino, A.M.; Hale, M.D.; Godbold, D.L. Ectomycorrhizal community structure in a healthy and a Phytophthora-infected chestnut (*Castanea sativa* Mill.) stand in central Italy. *Mycorrhiza* **2009**, *20*, 25–38. <https://doi.org/10.1007/s00572-009-0256-z>.
111. Chiuchiarelli, I.; Paolanti, M.; Riviaccio, R.; Santucci, S. *Ambiente e Territorio. Carta dei Suoli della Regione Abruzzo Scala 1:250.000*; ARSSA Regione Abruzzo: Scerni, Italy, 2006.
112. Colombo, C. *Guida Pedologica ai Suoli Forestali del Matese Molisano. Itinerari Pedologici Italiani/1*. ARACNE: Roma, Italy, 2010; ISBN 978-88-548-3343-2.
113. Regione Campania (2020) Progetto carta dei suoli della Campania. Assessorato all'Agricoltura, Settore SIRCA, Geoportale Regione Campania, Sistema Informativo Territoriale della Regione Campania, Naples, Italy. <https://sit2.regione.campania.it/node> (accessed on 26 October 2022)
114. Cassi, F.; Viviano, L. I Suoli Della Basilicata—Carta Pedologica Della Regione Basilicata in Scala 1:250.000. Regione Basilicata—Dip. Agricoltura e Sviluppo Rurale. Direzione Generale; Reg. Basilicata-Dip. Agric. Svilupp. Rurale. Dir. Gen.: Potenza, Italy, 2006
115. Regione Autonoma della Sardegna. *Piano Forestale Particolareggiato del Complesso Forestale "Goceano, UGB Fiorentini, Monte Pisanu, Anela. Analisi Multidisciplinari*; DREAM: Pratovecchio, Italy, 2014.
116. Fierotti, G.; Dazzi, C.; Raimondi, S. *Carta dei Suoli della Sicilia-Soil Map of Sicily, Alla Scala 1:250.000 con Commenti*; Regione Siciliana: Palermo, Italy, 1988.
117. Costantini, A.C.; Dazzi, C. (Eds.) *The Soils of Italy*; Springer: London, UK, 2013. <https://doi.org/10.1007/978-94-007-5642-7>.

**Disclaimer/Publisher's Note:** The statements, opinions and data contained in all publications are solely those of the individual author(s) and contributor(s) and not of MDPI and/or the editor(s). MDPI and/or the editor(s) disclaim responsibility for any injury to people or property resulting from any ideas, methods, instructions or products referred to in the content.