



# FRONTIER FIELDS CLUSTERS: DEEP *CHANDRA* OBSERVATIONS OF THE COMPLEX MERGER MACS J1149.6+2223

G. A. OGREAN<sup>1,20</sup>, R. J. VAN WEEREN<sup>1,21</sup>, C. JONES<sup>1</sup>, W. FORMAN<sup>1</sup>, W. A. DAWSON<sup>2</sup>, N. GOLOVICH<sup>3</sup>, F. ANDRADE-SANTOS<sup>1</sup>,  
S. S. MURRAY<sup>1,4</sup>, P. NULSEN<sup>1,5</sup>, E. ROEDIGER<sup>6,7</sup>, A. ZITRIN<sup>8,20</sup>, E. BULBUL<sup>1</sup>, R. KRAFT<sup>1</sup>, A. GOULDING<sup>9</sup>, K. UMETSU<sup>10</sup>,  
T. MROCKZKOWSKI<sup>11,22</sup>, A. BONAFEDE<sup>12</sup>, S. RANDALL<sup>1</sup>, J. SAYERS<sup>8</sup>, E. CHURAZOV<sup>13,14</sup>, L. DAVID<sup>1</sup>, J. MERTEN<sup>15</sup>, M. DONAHUE<sup>16</sup>,  
B. MASON<sup>17</sup>, P. ROSATI<sup>18</sup>, A. VIKHLININ<sup>1</sup>, AND H. EBELING<sup>19</sup>

<sup>1</sup> Harvard-Smithsonian Center for Astrophysics, 60 Garden Street, Cambridge, MA 02138, USA; [gogrean@cfa.harvard.edu](mailto:gogrean@cfa.harvard.edu)

<sup>2</sup> Lawrence Livermore National Lab, 7000 East Avenue, Livermore, CA 94550, USA

<sup>3</sup> University of California, One Shields Avenue, Davis, CA 95616, USA

<sup>4</sup> Department of Physics and Astronomy, Johns Hopkins University, 3400 N. Charles Street, Baltimore, MD 21218, USA

<sup>5</sup> ICRAR, University of Western Australia, 35 Stirling Hwy, Crawley WA 6009, Australia

<sup>6</sup> Astronomy and Astrophysics Section, Dublin Institute for Advanced Studies, 31 Fitzwilliam Place, Dublin 2, Ireland

<sup>7</sup> E. A. Milne Centre for Astrophysics, Department of Physics and Mathematics, University of Hull, Hull, HU6 7RX, UK

<sup>8</sup> Cahill Center for Astronomy and Astrophysics, California Institute of Technology, MC 249-17, Pasadena, CA 91125, USA

<sup>9</sup> Department of Astrophysical Sciences, Princeton University, Princeton, NJ 08544, USA

<sup>10</sup> Institute of Astronomy and Astrophysics, Academia Sinica, P.O. Box 23-141, Taipei 10617, Taiwan

<sup>11</sup> U.S. Naval Research Laboratory, 4555 Overlook Avenue SW, Washington, DC 20375, USA

<sup>12</sup> Hamburger Sternwarte, Universität Hamburg, Gojenbergsweg 112, D-21029 Hamburg, Germany

<sup>13</sup> Max Planck Institute for Astrophysics, Karl-Schwarzschild-Str. 1, D-85741, Garching, Germany

<sup>14</sup> Space Research Institute, Profsoyuznaya 84/32, Moscow, 117997, Russia

<sup>15</sup> Department of Physics, University of Oxford, Keble Road, Oxford OX1 3RH, UK

<sup>16</sup> Department of Physics and Astronomy, Michigan State University, East Lansing, MI 48824, USA

<sup>17</sup> National Radio Astronomy Observatory, 520 Edgemont Road, Charlottesville, VA 22903, USA

<sup>18</sup> Department of Physics and Earth Science, University of Ferrara, Via G. Saragat, 1, I-44122 Ferrara, Italy

<sup>19</sup> Institute for Astronomy, University of Hawaii, 2680 Woodlawn Drive, Honolulu, HI 96822, USA

Received 2015 September 8; accepted 2015 November 25; published 2016 March 4

## ABSTRACT

The *Hubble Space Telescope* Frontier Fields cluster MACS J1149.6+2223 is one of the most complex merging clusters, believed to consist of four dark matter halos. We present results from deep (365 ks) *Chandra* observations of the cluster, which reveal the most distant cold front ( $z = 0.544$ ) discovered to date. In the cluster outskirts, we also detect hints of a surface brightness edge that could be the bow shock preceding the cold front. The substructure analysis of the cluster identified several components with large relative radial velocities, thus indicating that at least some collisions occur almost along the line of sight. The inclination of the mergers with respect to the plane of the sky poses significant observational challenges at X-ray wavelengths. MACS J1149.6+2223 possibly hosts a steep-spectrum radio halo. If the steepness of the radio halo is confirmed, then the radio spectrum, combined with the relatively regular ICM morphology, could indicate that MACS J1149.6+2223 is an old merging cluster.

**Key words:** galaxies: clusters: general – galaxies: clusters: individual (MACS J1149.6+2223) – galaxies: clusters: intracluster medium

**Supporting material:** interactive figures

## 1. INTRODUCTION

Galaxy clusters grow hierarchically by mergers with other clusters and groups of galaxies, and by accretion of uncollapsed gas and dark matter from the intergalactic medium. Signs of this growth process include features of ram-pressure stripping and instabilities (e.g., Nulsen 1982), shocks and cold fronts (e.g., Markevitch & Vikhlinin 2007), diffuse radio emission (e.g., Feretti et al. 2012), and significant offsets between the gas and dark matter substructures (e.g., Clowe et al. 2004).

MACS J1149.6+2223 is a hot ( $T_{1000} = 9.1 \pm 0.7$  keV)<sup>23</sup> galaxy cluster at  $z = 0.544$  (Ebeling et al. 2007). The cluster was discovered as part of the Massive Cluster Survey (MACS;

Ebeling et al. 2001), and has a total mass of  $(1.4 \pm 0.3) \times 10^{15} M_{\odot}$  ( $1\sigma$ ) within  $R_{500}$  (Umetsu et al. 2014). A strong-lensing analysis of the cluster, based on *Hubble Space Telescope* (*HST*) observations, has revealed a massive merging cluster with a relatively shallow mass distribution leading to a unique lensing strength (Zitrin & Broadhurst 2009). A parametric lensing analysis (Smith et al. 2009) showed that at least four merging mass halos were needed to describe the strong-lensing observables in this cluster (see also Rau et al. 2014; Oguri 2015), making MACS J1149.6+2223 one of the most complex merging clusters. MACS J1149.6+2223 is now acknowledged as one of the most powerful cosmic lenses, and is one of the clusters included in the Cluster Lensing and Supernova Survey (CLASH; Postman et al. 2012), and in the *HST* Frontier Fields (Lotz et al. 2014).

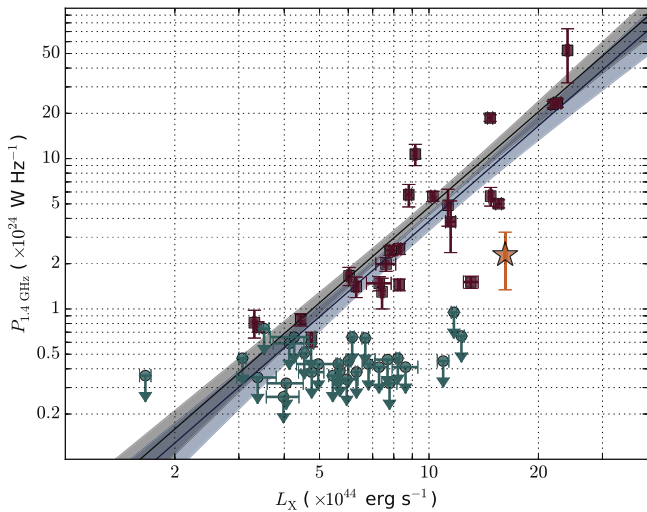
Diffuse radio sources such as relics and halos are found in some merging galaxy clusters (see, e.g., Feretti et al. 2012, for a review). MACS J1149.6+2223 possibly hosts three such sources: a giant radio halo, a southeastern (SE) relic, and possibly another relic in the west (W) (Bonafede et al. 2012).

<sup>20</sup> Hubble Fellow.

<sup>21</sup> Einstein Fellow.

<sup>22</sup> National Research Council Fellow.

<sup>23</sup>  $T_{1000}$  refers to the temperature measured in a circle of radius  $R_{1000}$  around the cluster center, where  $R_{1000}$  is the radius within which the mean mass density is 1000 times the critical density of the universe at the cluster redshift. For MACS J1149.6+2223,  $R_{1000} = 0.83$  Mpc ( $R_{1000} \sim 0.45 R_{200}$ ).



**Figure 1.**  $L_X - P$  diagram. Clusters with only upper limits on the radio halo power are shown in teal-colored circles, while clusters with detected halos are shown in dark red squares. MACS J1149.6+2223 is represented with an orange star. Error bars are drawn for all points, but some are small and barely visible. Values for all clusters, with the exception of MACS J0416.1–2403 are taken from Cassano et al. (2013). An interactive version of the diagram is available.

The radio halo was barely detected in archival 1.4 GHz Very Large Array (VLA) data. The combination of the archival VLA data with 323 MHz Giant Metrewave Radio Telescope (GMRT) observations suggested that the radio halo in MACS J1149.6+2223 has an extremely steep spectral index<sup>24</sup>,  $\alpha \sim -2$ , indicating either a less energetic merger (Brunetti et al. 2008) or an old halo in which the relativistic particles have aged. Possibly because the radio spectral index is so steep, the cluster is an outlier on the  $L_X - P$  relation (Cassano et al. 2013), as shown in Figure 1.

Here, we present results from deep *Chandra* observations of MACS J1149.6+2223. In Section 2, we discuss the observations used and summarize the data reduction. In Section 3 we detail the method used to model the foreground and background components. Sections 4–7 present the *Chandra* results. We discuss and summarize our results in Section 8.

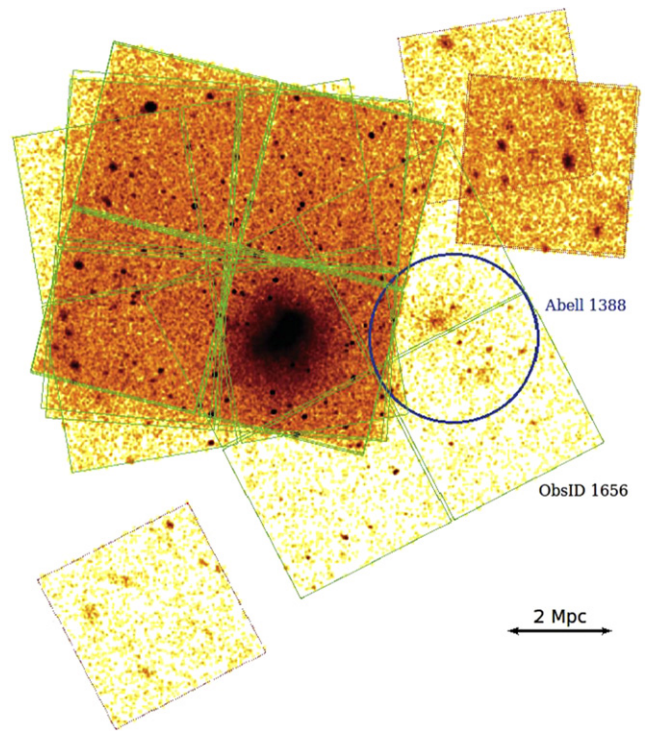
Throughout the paper, we adopt a  $\Lambda$ CDM cosmology with  $H_0 = 70 \text{ km s}^{-1} \text{ Mpc}^{-1}$ ,  $\Omega_m = 0.3$ , and  $\Omega_\Lambda = 0.7$ . In this cosmology,  $1'$  at the redshift of MACS J1149.6+2223 corresponds to  $\approx 383 \text{ kpc}$ . Unless specifically mentioned otherwise, errors are quoted at the 90% confidence level.

## 2. OBSERVATIONS AND DATA REDUCTION

MACS J1149.6+2223 was observed with *Chandra* eight times, in VFAINT mode, between 2001 and 2015, for a total of 365 ks. The observations were analyzed using CIAO v4.7, with CALDB v4.6.5. The data reduction steps are the same as those employed in the analysis of the *Chandra* data of MACS J0416.1–2403 (Ogrean et al. 2015). Soft proton flares were removed from the data, point sources were subtracted, and the rescaled<sup>25</sup> instrumental background was subtracted from the images and spectra.

<sup>24</sup> The radio flux density,  $S$ , is proportional to  $\nu^\alpha$ , where  $\nu$  is the frequency of the observation and  $\alpha$  is the spectral index.

<sup>25</sup> The instrumental background images and spectra were rescaled such that their count rates in 10–12 keV are the same as the count rates of the observations in the same energy band.



**Figure 2.** Footprint of the eight *Chandra* ObsIDs of MACS J1149.6+2223. Abell 1388 ( $z \approx 0.18$ ; von et al. 2014) contaminates the FOV of ObsID 1656. A circle of radius  $\approx 750 \text{ kpc}$  was drawn around Abell 1388. ObsID 1656 was excluded from our analysis.

**Table 1**  
*Chandra* Observations of MACS J1149.6+2223

ObsID <sup>a</sup>	CCDs on	Starting Date	Exposure (ks)	Clean Exposure (ks)
3589	10, 11, 12, 13, S2	07 Feb 2003	20.0	18.3
16238	10, 11, 12, 13	09 Feb 2015	35.6	30.2
16239	10, 11, 12, 13, S2	17 Jan 2015	51.4	48.6
16306	10, 11, 12, 13, S2	05 Feb 2014	79.7	71.8
16582	10, 11, 12, 13, S2	08 Feb 2014	18.8	17.3
17595	10, 11, 12, 13	18 Feb 2015	69.2	57.1
17596	10, 11, 12, 13	10 Feb 2015	72.1	62.3

**Note.**

<sup>a</sup> ObsID 1656 was excluded from the analysis and is not included in the table.

A footprint of the eight available ObsIDs of MACS J1149.6+2223 is shown in Figure 2. In the field of view (FOV) of ObsID 1656, about 7 arcmin west of MACS J1149.6+2223, is the foreground galaxy cluster Abell 1388 ( $z \approx 0.18$ ; von et al. 2014). In ObsID 1656, Abell 1388 is positioned off-axis on the ACIS-I detector, where the point-spread function (PSF) is considerably degraded. Because emission from Abell 1388 covers a large part of the *Chandra* FOV in ObsID 1656, this observation is not very useful for the analysis of MACS J1149.6+2223.<sup>26</sup> Given the relatively short exposure time of ObsID 1656 ( $\sim 20 \text{ ks}$ ), we excluded this data set from our analysis. Therefore, the results presented here are based on 305 ks of flare-filtered *Chandra* data.

A summary of the seven ObsIDs used in this paper is presented in Table 1.

<sup>26</sup> We did not detect emission from Abell 1388 in the other *Chandra* ObsIDs.

**Table 2**  
Foreground and Background Spectral Parameters

Spectral Component	Temperature $T$ (keV)	Power-law Index $\Gamma$	0.5–2 keV Flux $\mathcal{F}_{0.5-2}^{0.5-2 \text{ keV}}$ ( $\text{erg cm}^{-2} \text{ s}^{-1} \text{ arcmin}^{-2}$ )
LHB	$0.14 \pm 0.01^a$	...	$9.40^{+0.52}_{-0.23} \times 10^{-16a}$
GH	$0.45^{+0.31}_{-0.25}$	...	$1.56^{+4.60}_{-1.04} \times 10^{-16}$
PL ObsID 16238			$8.09^{+2.73}_{-2.18} \times 10^{-16}$
PL ObsID 16239			$6.32^{+1.84}_{-1.83} \times 10^{-16}$
PL ObsID 16306			$7.44^{+1.32}_{-1.33} \times 10^{-16}$
PL ObsID 16582	...	1.41 <sup>b</sup>	$7.44^{+1.32}_{-1.33} \times 10^{-16}$
PL ObsID 17595			$5.25^{+1.18}_{-1.19} \times 10^{-16}$
PL ObsID 17596			$5.25^{+1.18}_{-1.19} \times 10^{-16}$
PL ObsID 3589			$9.56^{+2.38}_{-2.03} \times 10^{-16}$

**Notes.**

<sup>a</sup> *ROSAT* best-fitting value. Fixed *Chandra* spectral parameter.

<sup>b</sup> Fixed parameter.

### 3. BACKGROUND MODELING

The analysis of features in the outskirts of galaxy clusters, where the ICM surface brightness is low, necessitates a careful treatment of the background components. We modeled the X-ray foreground and background using spectra extracted from regions free of ICM emission. The stowed background was subtracted from the spectra, and the remaining emission was described as the sum of unabsorbed Local Hot Bubble (LHB) emission, absorbed Galactic Halo (GH) emission, and absorbed emission from unresolved X-ray point sources. The spectral parameters of the LHB in the direction of MACS J1149.6+2223 were determined from a *ROSAT* All-Sky Survey (RASS) background spectrum extracted in an annulus with radii  $0.3-1.3$  around the cluster center ( $0.3$  corresponds approximately to  $3R_{200}$ , and the inner radius was chosen to be so large in order to avoid contamination from Abell 1388 in the RASS spectrum). The temperature and normalization of the Local Hot Bubble were kept fixed to the best-fitting RASS values when fitting the *Chandra* spectra. The Galactic Halo parameters were linked for the seven *Chandra* spectra. ObsIDs 17595 and 17596, and ObsIDs 16306 and 16582 cover essentially the same region of the sky. For these pairs of observations, we kept the normalizations of the power laws (PLs) describing unresolved point sources free but linked. The power-law normalizations were free and unlinked for the other ObsIDs. The indices of the power laws were fixed to 1.41 (De Luca 2004).

The spectra were binned to have a minimum of 1 count per bin, and fitted using the extended C-statistic (Cash 1979; Wachter et al. 1979) in XSPEC v12.8.2. We restricted the fit to the energy band 0.7–7 keV. We assumed the solar abundance table of Feldman (1992), and Verner et al. (1996) photoelectric absorption cross-sections. The hydrogen column density in the direction of the cluster was fixed to a value of  $2.06 \times 10^{20} \text{ cm}^{-2}$ , which represents the sum of atomic and molecular hydrogen column densities<sup>27</sup> in a circle with a radius of  $1^\circ$  around the cluster center (Kalberla et al. 2005; Willingale & Starling 2013). In Table 2, we summarize the best-fitting sky

foreground and background model. The model is shown in Figure 3.

### 4. GLOBAL X-RAY PROPERTIES

The surface brightness map of the cluster is shown in Figure 4. The cluster is elongated in the NW–SE direction, and has a single surface brightness concentration. There is little substructure visible in the ICM, unlike in some of the other Frontier Field clusters such as MACS J0717.5+3745 and MACS J0416.1–2403 (e.g., Ogrean et al. 2015; van Weeren et al. 2015a). The X-ray emission is asymmetrical: more elongated toward SE than toward NW, and brighter and more extended in the SW than in the NE. A hint of a surface brightness edge can be seen N–NE of the cluster center; the edge is discussed in Sections 6 and 7.

To measure the global properties of the cluster, we extracted spectra in a circle with radius  $R_{500} = 1.6$  Mpc (Sayers et al. 2013) around the cluster center, chosen to be at R.A. =  $1^{\text{h}} 49^{\text{m}} 36^{\text{s}}$  and decl. =  $+22^\circ 24' 05''$ . Stowed background spectra extracted from the same regions were subtracted from the total spectra. The remaining emission was modeled as the sum of sky background and ICM signal. The sky background parameters were fixed to the values in Table 2. The ICM was modeled with a single-temperature thermal component (APEC; Smith et al. 2001; Foster et al. 2012). The cluster redshift was fixed to 0.544, while the other parameters of the APEC model were free in the fit. We determined that MACS J1149.6+2223 has an average temperature  $T_{500} = 10.73^{+0.62}_{-0.43}$  keV, a metallicity  $Z_{500} = 0.20 \pm 0.05Z_\odot$ , and a rest-frame luminosity  $L_{500,[0.1-2.4 \text{ keV}]} = (1.62 \pm 0.02) \times 10^{45} \text{ erg s}^{-1}$ . The  $R_{500}$  spectrum and the best-fitting model are shown in Figure 3.

### 5. ICM TEMPERATURE DISTRIBUTION

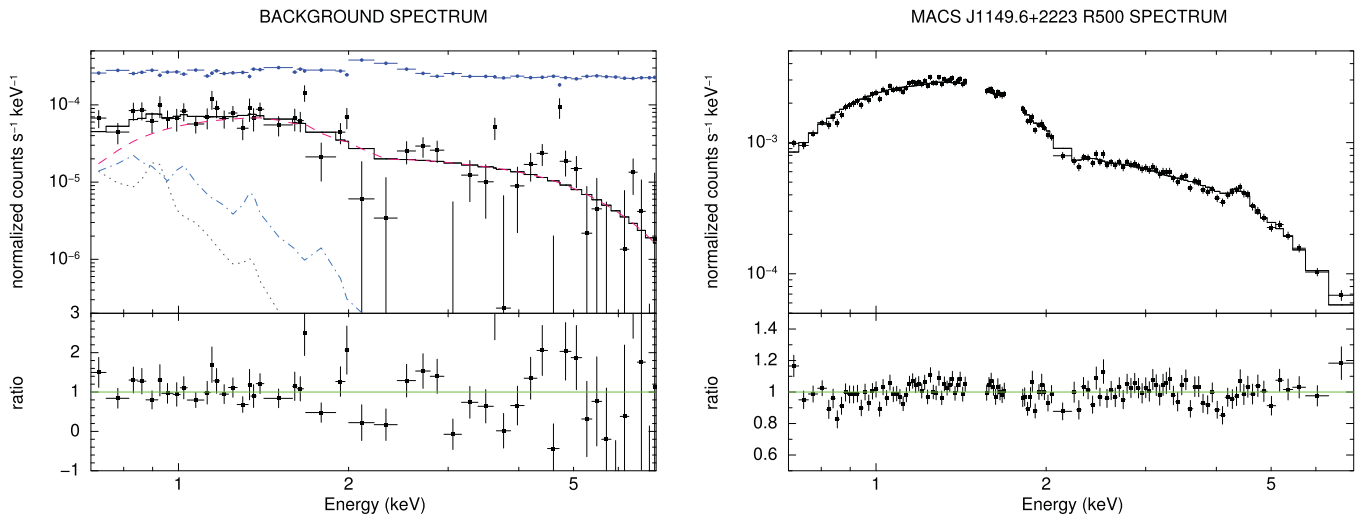
The CONTBIN code (Sanders 2006) was used to divide the surface brightness map of MACS J1149.6+2223 in regions with 3600 counts from the ICM and sky background combined. The regions follow the contours on a surface brightness map adaptively smoothed to achieve S/N  $\approx 10$ . The temperature distribution was mapped by extracting spectra from each of the regions, and fitting them with a single-temperature absorbed APEC component. The instrumental background was subtracted from the data, while the sky background was kept fixed to the parameters listed in Table 2. The cluster redshift was fixed to 0.544, while the metallicity was fixed to the  $R_{500}$  value of  $0.20 Z_\odot$ . The resulting temperature map is shown in Figure 5. An interactive version, which includes the statistical errors on the measurements at a confidence level of 90%, is available online.<sup>28</sup>

Throughout the ICM, the temperature is consistent with  $\sim 10$  keV. Temperature jumps between adjacent regions in Figure 5 would suggest the presence of shocks or cold fronts in the ICM. However, we do not detect statistically significant (at 90% confidence level) temperature jumps. At  $1\sigma$  significance, there is a hint of a cold front  $\sim 0.7-1$  arcmin N–NE of the cluster center. This feature will be examined more carefully in the next section.

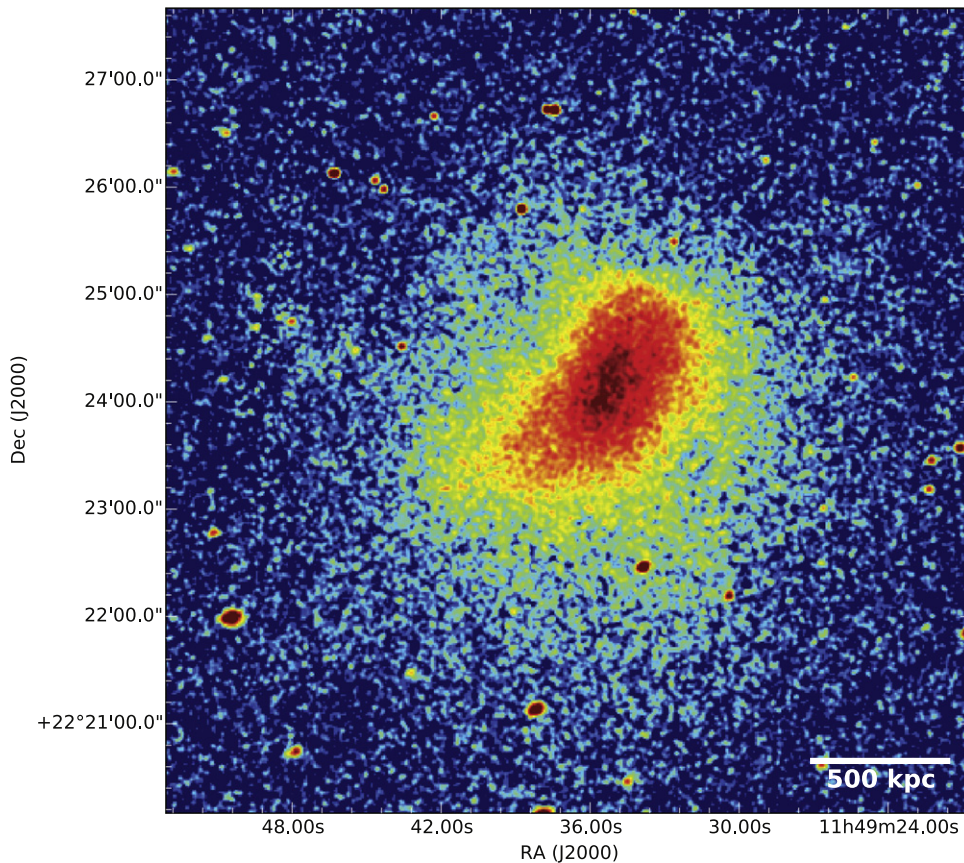
<sup>27</sup> <http://www.swift.ac.uk/analysis/nhtot/index.php>

<sup>28</sup> [http://hea-www.cfa.harvard.edu/~gogrean/interactive/MACSJ1149\\_Tmap.html](http://hea-www.cfa.harvard.edu/~gogrean/interactive/MACSJ1149_Tmap.html)





**Figure 3.** Left: X-ray foreground plus background spectrum, and best-fitting model (black). The LHB, GH, and power-law components of the model are shown in gray (dotted line), light blue (dashed-dotted line), and magenta (dashed line), respectively. The power-law component is an exposure-weighted average of the individual power-law components. The instrumental background spectrum is shown in dark blue. Right: *Chandra* spectrum of the  $R_{500}$  region of MACS J1149.6+2223. For clarity, the two spectra shown here are the combined spectra from all the ObsIDs. However, the actual fits were done by fitting the individual spectra in parallel. Small energy bands ( $\Delta E = 0.1$  keV) were excluded around the fluorescent instrumental lines Al  $K_{\alpha}$  (1.49 keV), Si  $K_{\alpha}$  (1.74 keV), and Au  $M_{\alpha,\beta}$  (2.1 keV). The bottom panels show the ratio of the data to the models.



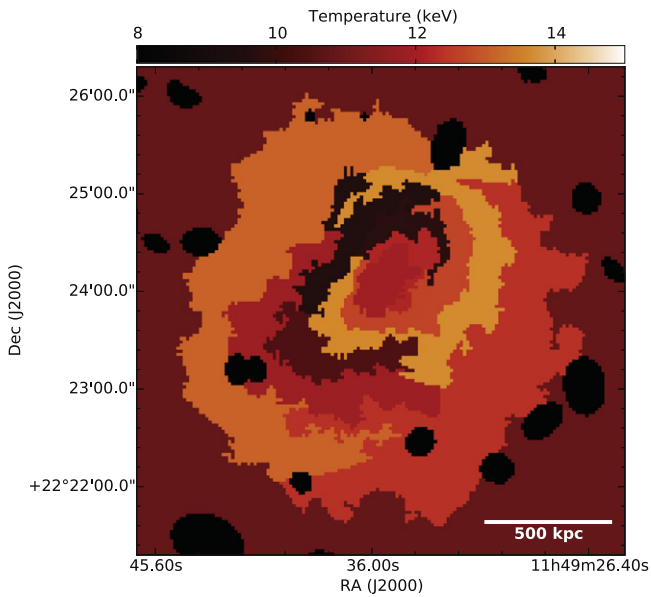
**Figure 4.** *Chandra* surface brightness map in the energy band 0.5–3 keV. The image was exposure-corrected, vignetting-corrected, instrumental background-subtracted, and smoothed with a Gaussian kernel of width 1 arcsec.

## 6. SURFACE BRIGHTNESS EDGES

### 6.1. Edges Near the Radio Relics

Surface brightness edges indicate underlying density discontinuities in the ICM that correspond either to shock fronts or

to cold fronts, depending on the direction of the temperature jump (e.g., Markevitch & Vikhlinin 2007). MACS J1149.6+2223 hosts one radio relic in the SE, and a radio relic candidate in the NW (Bonafede et al. 2012). Because radio relics are believed to result from particle acceleration at shock



**Figure 5.** Temperature map of MACS J1149.6+2223. Black ellipses mark regions from which point sources have been removed. The outermost spectral region is not fully shown in this figure; its actual area is about twice as large as shown.

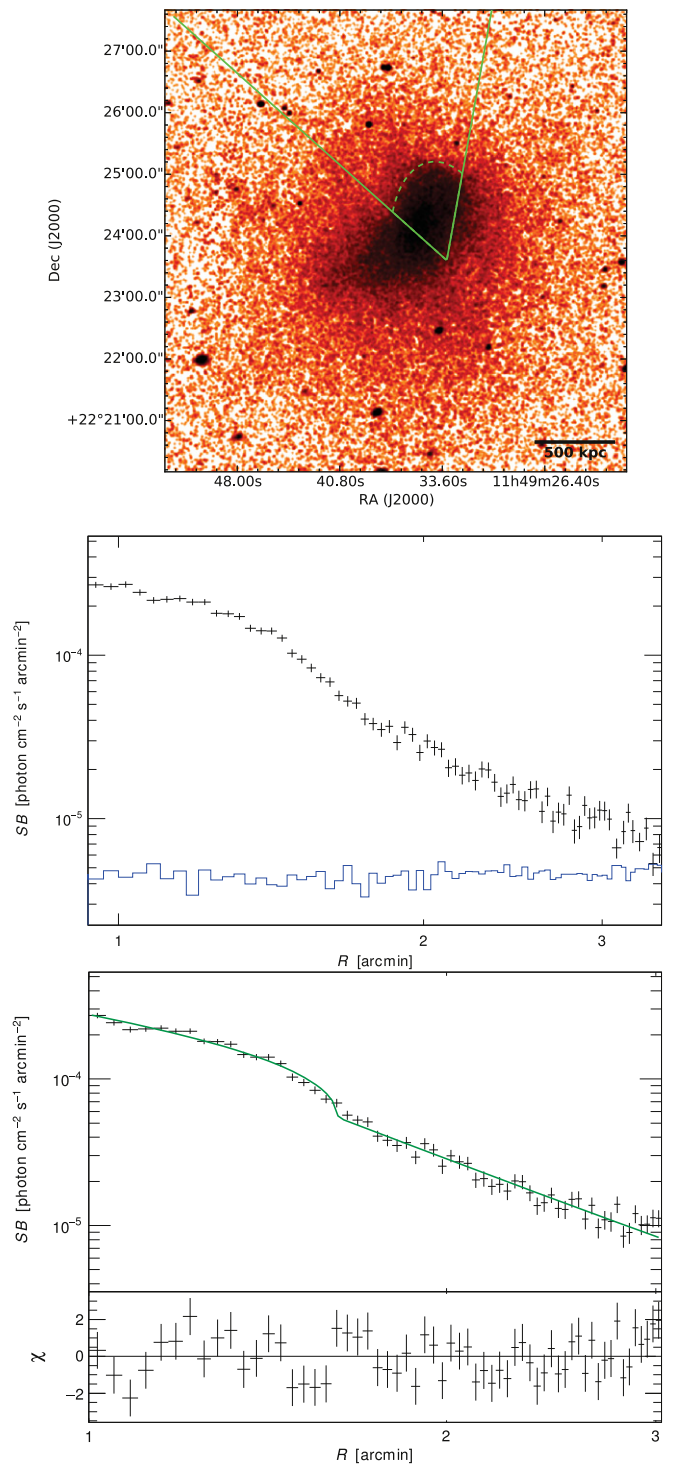
fronts (e.g., Markevitch et al. 2002; Markevitch 2006; Russell et al. 2012), we searched for surface brightness edges near the locations of the SE relic and the NW candidate relic. Unfortunately, in all the *Chandra* ObsIDs, the cluster was positioned near the edge of the FOV, in the SW corner of the detector. This positioning means that the two radio sources are at the very edge of the FOV, and all the X-ray point sources near the diffuse radio sources are significantly extended. Because of this, even if surface brightness edges were present near the diffuse radio sources, there are not enough counts available in the putative pre-shock regions to allow us to detect these edges.

### 6.2. A N-NE Surface Brightness Edge

Sharp surface brightness edges are not immediately visible in Figure 4. To search for weak edges, we examined the unsharp masked image of the cluster. The unsharp masked image, shown in Figure 9, was created by smoothing the surface brightness map with two Gaussians of widths 3 and 15 arcsec, and dividing their difference to the map with the larger smoothing. In the unsharp masked image, a strong gradient is seen N-NE of the cluster center.<sup>29</sup> This gradient could indicate a surface brightness edge.

We studied the putative surface brightness edge by extracting a surface brightness profile in an elliptical sector that approximately follows the X-ray surface brightness contours near the possible edge. The sector and the surface brightness profile across the putative edge revealed by the unsharp masked image are shown in Figure 6. The surface brightness profile around the putative edge was fitted with three density models: a power-law density model, a kink density model, and a broken power-law density model. The

<sup>29</sup> We tried various smoothing scales between 2 and 25 arcsec, but no additional substructure was revealed.



**Figure 6.** Top: sector used to model the surface brightness profile across the N-NE brightness edge. The dashed arc shows the location of the surface brightness edge. Middle: 0.5–4 keV surface brightness profile in the sector shown above, binned to a uniform S/N of 5. This high binning is done here only for clarity; a more finely binned profile was used for determining the best-fitting parameters (see the text for details). The instrumental background profile is shown in blue. Bottom: best-fitting broken power-law density model fitted to the surface brightness edge seen in the sector above. The surface brightness profile is shown with the instrumental background subtracted.

density models were squared and integrated along the line of sight assuming isothermal plasma and a prolate spheroidal geometry. The broken power-law density model was

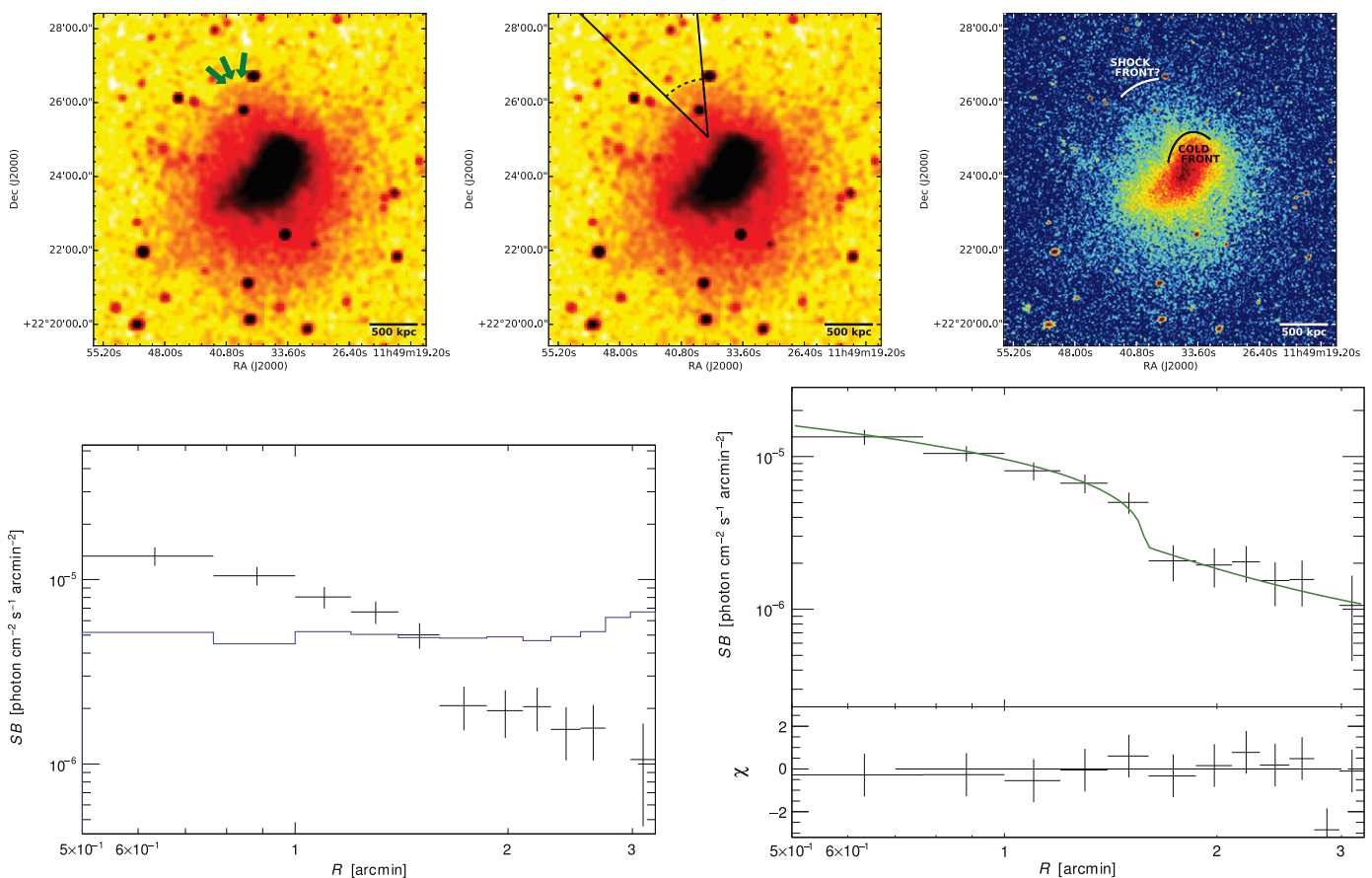
**Table 3**  
Best-fitting Density Model Parameters for the Profiles Shown in Figures 6 and 7

N–NE Sector (Inner Edge)							
Model	$\alpha$	$\beta$	$r_d^a$ (kpc)	$C$	$SB_{\text{skybkg}}$ (photons $\text{cm}^{-2} \text{s}^{-1} \text{arcmin}^{-2}$ )	$\Delta C\text{-stat}$	$CL^b$
Power law	$3.50 \pm 0.06$	...	...	...	...	0	...
Kink	$0.25^{+0.45}_{-0.64}$	$2.48 \pm 0.05$	$498 \pm 15$	...	$(5.16^{+0.75}_{-0.74}) \times 10^{-7}$	175	$\approx 100\%$
Broken power law	$0.98^{+0.15}_{-0.33}$	$2.06^{+0.15}_{-0.09}$	$620^{+8}_{-23}$	$1.57^{+0.09}_{-0.12}$	...	250	$\approx 100\%$
NE Sector (Outer Edge)							
Power law	$2.28^{+0.32}_{-0.30}$	...	...	...	...	0	...
Kink	$0.92^{+0.51}_{-0.69}$	$2.30^{+0.77}_{-0.52}$	$563^{+161}_{-107}$	...	$(6.08^{+1.02}_{-1.06}) \times 10^{-7}$	6.6	96.3%
Broken power law	$0.54^{+0.61}_{-0.70}$	$1.51^{+0.93}_{-0.81}$	$605^{+31}_{-27}$	$> 1.13$	...	10.2	98.3%

**Notes.**

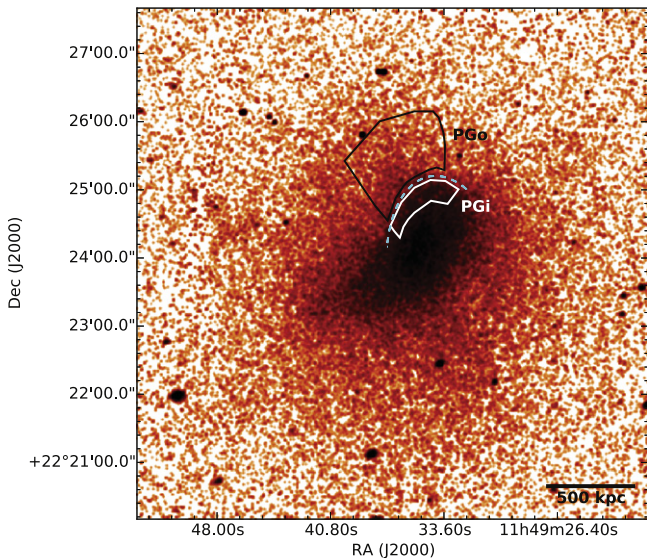
<sup>a</sup> Radii are measured from the center of the sectors, not from the cluster centers.

<sup>b</sup> Confidence level at which a model describes the data better than a power-law density model.



**Figure 7.** Top-left: 0.5–4 keV surface brightness map, binned by 8 and smoothed with a Gaussian of width 2 arcsec. The map was scaled to reveal a possible surface brightness edge located  $\sim 1$  Mpc from the cluster center. The position of the putative edge is indicated with arrows. Top-middle: sector used to model the surface brightness profile across possible NE brightness edge. Dashed line shows the location of the surface brightness edge indicated in the top-left panel. Top-right: same surface brightness map as in Figure 4, with the positions of the cold front and putative shock front marked. Bottom-left: 0.5–4 keV surface brightness profile in the sector shown above, binned to 150 counts/bin. This high binning is done here only for clarity; more finely binned profiles were used for determining the best-fitting parameters (see the text for details). The instrumental background profile is shown in blue. Bottom-right: best-fitting broken power-law density model fitted to the possible surface brightness edge seen  $\sim 1$  Mpc NE of the cluster center. The surface brightness profiles are shown with the instrumental background subtracted.





**Figure 8.** Regions used to measure the temperatures on both sides of the N–NE brightness edge. The dashed cyan arc marks the location of the density discontinuity.

parametrized as

$$n(r) = \begin{cases} C n_0 \left(\frac{r}{r_d}\right)^{-\alpha}, & \text{if } r \leq r_d \\ n_0 \left(\frac{r}{r_d}\right)^{-\beta}, & \text{if } r > r_d, \end{cases} \quad (1)$$

where  $n$  is the electron number density,  $C$  is the density compression, and  $r_d$  is the radius of the density jump. The kink model is a broken power-law density model with  $C = 1$ . The sky background level was calculated by fitting a constant to the surface brightness at large radii, where no ICM emission is seen. The sky background was consequently fixed when fitting the ICM surface brightness. The systematic uncertainties on the ICM density parameters were calculated by varying the sky background within the 90% confidence interval, and added in quadrature to the 90%-level statistical uncertainties. We assumed that the sky background does not vary spatially outside the 90% confidence interval.

We binned the profile to have approximately 20 counts/bin, and fitted it with a modified version of the `PROFFIT` package (Eckert et al. 2012). We used Cash statistics, and compared the various fits using the likelihood-ratio test.

In the profile along the N–NE direction (Figure 6), a weak edge is visible at a radius of  $\sim 1.5$  arcmin. The sky background in this sector was modeled by fitting a constant to the radius range 6–12 arcmin, and found to be  $5.16^{+0.75}_{-0.74} \times 10^{-7}$  photons  $\text{cm}^{-2} \text{s}^{-1} \text{arcmin}^{-2}$ . A broken power-law density model fit to radius range 1–3 arcmin yielded a best-fitting density compression  $C = 1.57^{+0.09}_{-0.12}$  (statistical plus systematic uncertainty, calculated as described above). The broken power-law model is shown in the bottom panel of Figure 6. The best-fitting parameters are summarized in Table 3.<sup>30</sup>

<sup>30</sup> The best-fitting density compression does not change significantly if we assume that the cluster is an oblate spheroid.

### 6.3. Hints of a Second NE Edge

In analyzing the N–NE edge, we detected a hint of an additional surface brightness edge in the NE, approximately 1 Mpc away from the cluster center. A surface brightness map scaled to reveal this putative edge is shown in the top-left panel of Figure 7. The surface brightness profile across the putative edge and the sector from which it was extracted are also shown in Figure 7. The best-fitting broken power-law model that describes the profile has a density compression  $C > 1.13$  at the 90% confidence level (when systematic uncertainties associated with the sky background level are also considered); only a lower limit could be set on this parameter. The density compression is  $> 1$  at a confidence level of 94%.<sup>31</sup> The best-fitting density parameters are summarized in Table 3, and the broken power-law fit is shown in the bottom-right panel of Figure 7.

## 7. THE NATURE OF THE BRIGHTNESS EDGES

The count statistics beyond the putative outer NE edge are too poor (signal-to-noise ratio  $[S/N] \sim 5$ ) to allow a temperature measurement, so we were not able to determine the nature of the outer NE edge. It could be either a shock front or a cold front.

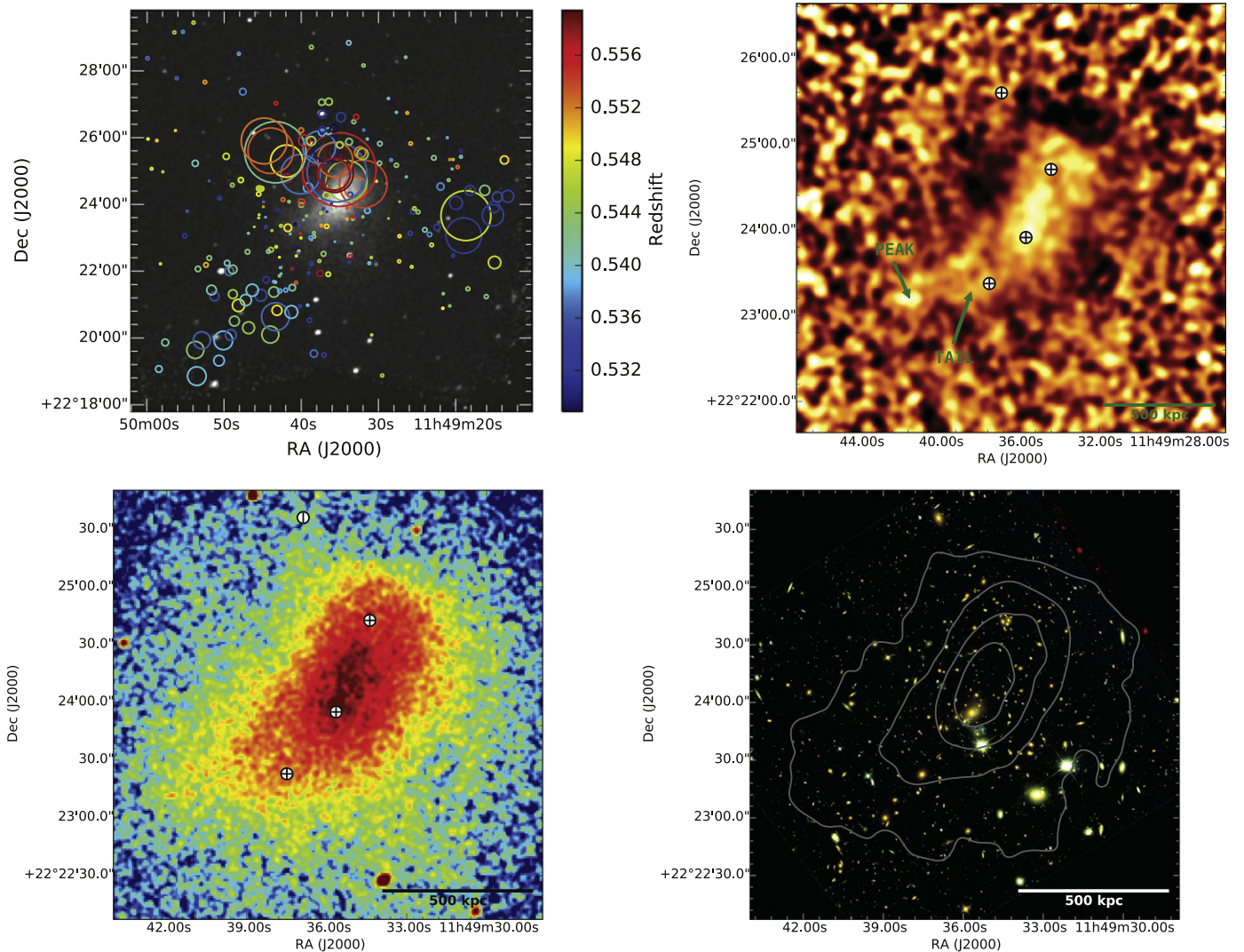
To determine the nature of the inner N–NE density discontinuity, we extracted spectra from two polygons (PGo—outer region; and PGi—inner region) on either side of the discontinuity. The polygons are shown in Figure 8. PGo has approximately 2200 ICM counts (signal-to-noise ratio  $\sim 40$ ), while PGi has approximately 2900 ICM counts ( $S/N \sim 50$ ). The best-fitting temperatures are  $T_{\text{PGi}} = 8.23^{+1.46}_{-1.01}$  keV and  $T_{\text{PGo}} = 9.88^{+3.13}_{-1.94}$  keV, so the temperatures in PGo and PGi are consistent with each other.

If the inner surface brightness edge is a shock front traveling outward through the ICM, then the Mach number calculated from the density compression using the Rankine–Hugoniot jump conditions is  $\mathcal{M} = 1.39^{+0.07}_{-0.09}$ . This Mach number corresponds to a temperature jump  $T_{\text{PGi}}/T_{\text{PGo}} = 1.38^{+0.07}_{-0.09}$ . For a post-shock temperature  $T_{\text{PGi}} = 9.7$  keV (statistically, the worst case scenario; this is the upper 90% confidence limit on the temperature in PGi), this temperature jump would imply  $T_{\text{PGo}} \approx 7.0 \pm 0.4$  keV. We refitted the PGo spectrum with the ICM temperature fixed first to 7.4 keV (again, statistically, the worst case scenario) and then fixed to 9.9 keV. The difference in statistics between the fit with  $T_{\text{PGo}} = 7.4$  keV and the fit with  $T_{\text{PGo}} = 9.9$  keV is  $\Delta C - \text{stat} = +4.99$ , which implies that a model with a temperature  $T_{\text{PGo}} = 7.4$  keV is rejected in favor of a model with  $T_{\text{PGo}} = 9.9$  keV at a confidence level of 97.5%. This suggests that the inner edge is in fact associated with a cold front, rather than with a shock front.

## 8. DISCUSSION AND CONCLUSIONS

Our *Chandra* analysis of the X-ray properties of MACS J1149.6+2223 revealed a previously unknown surface brightness edge located  $\sim 350$  kpc N–NE of the cluster center. The edge is best fitted by a broken power-law model with a density compression  $C = 1.57^{+0.09}_{-0.12}$ , and there is evidence that it is associated with a cold front; a shock front corresponding to a

<sup>31</sup> We tried various sectors in which the putative edge was positioned between 300–1000 kpc, but the lower limit on the density compression was always consistent with  $C > 1.1$  and the location of the discontinuity was essentially unchanged.



**Figure 9.** Top left: DS map of MACS J1149.6+2223. Circles show the projected locations of the cluster members, color-coded for their redshift. The radii of the circles are proportional to the likelihood that the galaxy belongs to a substructure with a different line of sight velocity and/or a different velocity dispersion than the average. The *Chandra* surface brightness is shown in grayscale. Top right: unsharp masked image of MACS J1149.6+2223. The image was created from two 0.5–4 keV surface brightness maps smoothed with Gaussians of widths 3 and 15 arcsec, by dividing their difference to the map with the larger smoothing. The surface brightness maps had the point sources removed, and the “gaps” filled. Possible surface brightness edges on scales of 3–15 arcsec (20–95 kpc) appear as strong gradients in the image. Putative edges are seen N–NE of the cluster center. The centers of the four DM halos identified by Smith et al. (2009) are shown with Sun crosses. The tail emphasized by the unsharp masking and the region in which the tail’s X-ray brightness peaks are indicated with arrows. Bottom left: same *Chandra* surface brightness map as in Figure 4. The centers of the four DM halos identified by Smith et al. (2009) are shown with Sun crosses. Bottom right: *HST* RGB image of MACS J1149.6+2223, based on observations using the F435W (blue), F606W (green), and F814W filters (red). *Chandra* surface brightness contours are overlaid. Both bottom panels show the same FOV, approximately  $1.4 \times 1.4 \text{ Mpc}^2$ .

density compression of  $1.57^{+0.09}_{-0.12}$  was rejected at a confidence level of 97.5% based on the temperatures on both sides of the density jump. If confirmed, the cold front in MACS J1149.6+2223, at  $z = 0.544$ , is the most distant cold front discovered to date. Numerical simulations of mass-limited cluster samples have shown that the fraction of cold fronts up to redshift  $z = 1$  depends only weakly on redshift (Hallman et al. 2010). Observationally, the fraction of clusters with cold fronts has been estimated to be  $\sim 50\%$ – $70\%$  with *XMM-Newton* and *Chandra* (Markevitch et al. 2003; Ghizzardi et al. 2010). The dearth of cold fronts detected at  $z \sim 0.5$  through density and temperature jumps is most likely an observational limitation; detecting high-redshift cold fronts requires very deep observations with X-ray satellites that have arcsec and spatial resolution.

MACS J1149.6+2223 is a major merger, and we find no evidence of a compact cool core. Therefore, the cold front is most likely a merger cold front, caused by a remnant subcluster core that decoupled from its dark matter halo during the merger event. In this scenario, the cold front should also have an associated bow shock. The putative surface brightness edge detected at 90% confidence further out in the NE,  $\sim 1 \text{ Mpc}$  away from the cluster center, could be this bow shock. Approximating the cold front to be spherical, with a sphere radius of  $\sim 350 \text{ kpc}$ , the distance between the cold front and the putative bow shock implies a Mach number of 1.3–1.4 (e.g., Farris & Russell 1994). Such a Mach number would be similar to those of the shocks detected in other galaxy clusters (e.g., Macario et al. 2011; Russell et al. 2012). No diffuse radio emission was detected near the location of the putative shock



front. If the shock is confirmed, then the lack of radio emission could be explained by a low Mach number that would not allow it to efficiently accelerate particles. Most shock fronts are traced by radio relics, but there are also exceptions, such as in Abell 2146, in which no diffuse radio emission was detected near the shocks (Russell et al. 2011).

The substructures in MACS J1149.6+2223 were studied using the Dressler–Shectman (DS) test (Dressler & Shectman 1988). The resulting map is presented in Figure 9. N–NE of the cluster, the DS map reveals substructure with a radial velocity component of  $\sim 2500 \text{ km s}^{-1}$  relative to the average cluster redshift (Golovich et al. 2016). The cold front and putative shock front detected N–NE of the center of MACS J1149.6+2223 could have been caused by the collision of this high-velocity substructure with the main cluster. However, as further discussed by Golovich et al. (2016), the collision that led to the formation of the cold front is not necessarily the same collision as the one that triggered the formation of the radio halo detected by Bonafede et al. (2012).

The DS map also shows multiple other substructures, which indicate that MACS J1149.6+2223 is a very complex merger between more than only two subclusters. The complex nature of the merger is supported by its dark matter distribution (Smith et al. 2009), which is best described by a mass model consisting of four dark matter halos. In the bottom left panel of Figure 9, we mark the location of the four dark matter halos on the *Chandra* surface brightness map. Given the high radial velocity differences between substructures seen in the DS map (top left panel in Figure 9 and Golovich et al. 2016), at least some of the collisions must have a significant line of sight component. The *Chandra* observations of the cluster support a complex merger scenario, in which the merger is seen primarily not in the plane of the sky. With the exception of the cold front and the putative shock front N–NE of the cluster center, we found no other surface brightness edges or temperature substructures. Throughout the ICM, the temperatures are very high,  $\gtrsim 8 \text{ keV}$ .

Furthermore, in the X-ray surface brightness map, one cannot visually separate the individual merging gas components, as can sometimes be done in simpler mergers occurring close to the plane of the sky (e.g., 1E 0657-56, CIZA J2242.8+5301). In the top right panel of Figure 9, we show the centers of the four dark matter halos identified by Smith et al. (2009) overlaid on the *Chandra* unsharp masked image. The unsharp masked image reveals a “tail” of gas with a length  $\sim 500 \text{ kpc}$ , extending SE from the cluster center. The surface brightness of the tail peaks at the SE tip of the tail. The peak is due to two small regions of X-ray excess, each approximately 40 kpc in diameter. These regions are not clearly associated with X-ray or optical point sources, and they are offset  $\sim 350 \text{ kpc}$  east from the southernmost dark matter peak. The origin of the dense gas causing the X-ray excess is unclear.

Given that MACS J1149.6+2223 possibly consists of at least four merging DM halos, the lack of significant substructure in the ICM is somewhat surprising. For comparison, another Frontier Fields Cluster, MACS J0717.5+3745, which also consists of at least four merging DM halos, has an ICM that appears significantly more disturbed and presents several X-ray features associated with shocks, cold fronts, and stripped gas (van Weeren et al. 2015a, and van Weeren et al. 2015b). The ICM of MACS J1149.6+2223 could appear relatively regular if the merging subclusters collided perpendicularly to the plane of the sky. However, the centers of the DM

halos identified by Smith et al. (2009) are separated, in projection, by 250–750 kpc; these distances seem too large for the collisions to have occurred perpendicularly to the plane of the sky. Another possibility is that MACS J1149.6+2223 is an old merger (see Golovich et al. 2016, for a discussion of the merger scenario). If this is the case, then the collisionless DM halos are still in the process of merging, while the collisional gas halos have already merged.

The faint radio halo discovered by Bonafede et al. (2012) could have a steep spectrum (relatively shallow radio data suggests  $\alpha \lesssim -2$ ; Bonafede et al. 2012). A steep spectrum could point to an old radio halo, in which particle aging caused a steepening of the spectrum, or to a less energetic merger (Brunetti et al. 2008). MACS J1149.6+2223 is one of the most massive known clusters, so it seems unlikely that the merger is less energetic. An old radio halo, which could be seen in an old merger, would be consistent with the relatively regular ICM morphology. While the radio halo could have been formed by an older collision between two of the subclusters in MACS J1149.6+2223, a more recent collision between a different pair of subclusters might have given rise to the cold front seen  $\sim 350 \text{ kpc}$  N–NE of the cluster center (Golovich et al. 2016). The same collision that triggered the formation of the radio halo could also have resulted in the formation of the radio relic(s) detected by Bonafede et al. (2012).

By combining high-quality X-ray, radio, and optical/lensing observations of MACS J1149.6+2223, one could potentially set constraints on its complex merger scenario. However, pinning down the merger geometry would be difficult.

We thank the referee for constructive comments.

G.A.O. acknowledges support by NASA through a Hubble Fellowship grant HST-HF2-51345.001-A awarded by the Space Telescope Science Institute, which is operated by the Association of Universities for Research in Astronomy, Incorporated, under NASA contract NAS5-26555. R.J.v.W. was supported by NASA through the Einstein Postdoctoral grant number PF2-130104 awarded by the *Chandra* X-ray Center, which is operated by the Smithsonian Astrophysical Observatory for NASA, under contract NAS8-03060. R.J.v.W. is supported by a Clay Fellowship awarded by the Harvard-Smithsonian Center for Astrophysics. A.Z. acknowledges support by NASA through a Hubble Fellowship grant HST-HF2-51334.001-A awarded by the Space Telescope Science Institute, which is operated by the Association of Universities for Research in Astronomy, Incorporated, under NASA contract NAS5-26555. This research was performed while T.M. held a National Research Council Research Associateship Award at the Naval Research Laboratory (NRL). F.A.S. acknowledges support from *Chandra* grant G03-14131X. Part of this work was performed under the auspices of the U.S. DOE by LLNL under contract DE-AC52-07NA27344.

This research made use of NASA’s Astrophysics Data System. This research also made use of the NASA/IPAC Extragalactic Database (NED), which is operated by the Jet Propulsion Laboratory, California Institute of Technology, under contract with the National Aeronautics and Space Administration. This research made use of APLpy, an open-source plotting package for Python hosted at <http://aplpy.github.com>. Some of the cosmological parameters in this paper were calculated using Ned Wright’s cosmology calculator (Wright 2006).

The scientific results reported in this article are based on observations made by the *Chandra* X-ray Observatory.

*Facility:* CXO (ACIS).

## REFERENCES

- Bonafede, A., Brüggem, M., van Weeren, R., et al. 2012, *MNRAS*, **426**, 40  
 Brunetti, G., Giacintucci, S., Cassano, R., et al. 2008, *Natur*, **455**, 944  
 Cash, W. 1979, *ApJ*, **228**, 939  
 Cassano, R., Etori, S., Brunetti, G., et al. 2013, *ApJ*, **777**, 141  
 Clowe, D., Gonzalez, A., & Markevitch, M. 2004, *ApJ*, **604**, 596  
 De Luca, A., & Molendi, S. 2004, *A&A*, **419**, 837  
 Dressler, A., & Shectman, S. A. 1988, *AJ*, **95**, 985  
 Ebeling, H., Barrett, E., Donovan, D., et al. 2007, *ApJL*, **661**, L33  
 Ebeling, H., Edge, A. C., & Henry, J. P. 2001, *ApJ*, **553**, 668  
 Eckert, D., Vazza, F., Etori, S., et al. 2012, *A&A*, **541**, A57  
 Farris, M. H., & Russell, C. T. 1994, *JGR*, **99**, 17681  
 Feldman, U. 1992, *PhysS*, **46**, 202  
 Feretti, L., Giovannini, G., Govoni, F., & Murgia, M. 2012, *A&ARv*, **20**, 54  
 Foster, A. R., Ji, L., Smith, R. K., & Brickhouse, N. S. 2012, *ApJ*, **756**, 128  
 Ghizzardi, S., Rossetti, M., & Molendi, S. 2010, *A&A*, **516**, A32  
 Golovich, N., Dawson, W., Ogrean, G., et al. 2016, *ApJ*, submitted  
 Hallman, E. J., Skillman, S. W., Jeltama, T. E., et al. 2010, *ApJ*, **725**, 1053  
 Kalberla, P. M. W., Burton, W. B., Hartmann, D., et al. 2005, *A&A*, **440**, 775  
 Lotz, J., Mountain, M., Grogin, N. A., et al. 2014, in American Astronomical Society Meeting Abstracts **223**, 254.01  
 Macario, G., Markevitch, M., Giacintucci, S., et al. 2011, *ApJ*, **728**, 82  
 Markevitch, M. 2006, in ESA Special Publication 604, The X-ray Universe 2005, ed. A. Wilson (Noordwijk: ESA), **723**  
 Markevitch, M., Gonzalez, A. H., David, L., et al. 2002, *ApJL*, **567**, L27  
 Markevitch, M., & Vikhlinin, A. 2007, *PhR*, **443**, 1  
 Markevitch, M., Vikhlinin, A., & Forman, W. R. 2003, in ASP Conf. Ser. 301, Matter and Energy in Clusters of Galaxies, ed. S. Bowyer, & C.-Y. Hwang (San Francisco, CA: ASP), **37**  
 Nulsen, P. E. J. 1982, *MNRAS*, **198**, 1007  
 Ogrean, G. A., van Weeren, R. J., Jones, C., et al. 2015, *ApJ*, **812**, 153  
 Oguri, M. 2015, *MNRAS*, **449**, L86  
 Postman, M., Coe, D., Benítez, N., et al. 2012, *ApJS*, **199**, 25  
 Rau, S., Vegetti, S., & White, S. D. M. 2014, *MNRAS*, **443**, 957  
 Russell, H. R., McNamara, B. R., Sanders, J. S., et al. 2012, *MNRAS*, **423**, 236  
 Russell, H. R., van Weeren, R. J., Edge, A. C., et al. 2011, *MNRAS*, **417**, L1  
 Sanders, J. S. 2006, *MNRAS*, **371**, 829  
 Sayers, J., Czakon, N. G., Mantz, A., et al. 2013, *ApJ*, **768**, 177  
 Smith, G. P., Ebeling, H., Limousin, M., et al. 2009, *ApJL*, **707**, L163  
 Smith, R. K., Brickhouse, N. S., Liedahl, D. A., & Raymond, J. C. 2001, *ApJL*, **556**, L91  
 Umetsu, K., Medezinski, E., Nonino, M., et al. 2014, *ApJ*, **795**, 163  
 van Weeren, R. J., Jones, C., Forman, W., et al. 2015, *IAUGA*, **22**, 57487  
 van Weeren, R. J., Ogrean, G. A., Jones, C., et al. 2015b, arXiv:1512.04527  
 Verner, D. A., Ferland, G. J., Korista, K. T., & Yakovlev, D. G. 1996, *ApJ*, **465**, 487  
 von der Linden, A., Allen, M. T., Applegate, D. E., et al. 2014, *MNRAS*, **439**, 2  
 Wachter, K., Leach, R., & Kellogg, E. 1979, *ApJ*, **230**, 274  
 Willingale, R., Starling, R. L. C., Beardmore, A. P., Tanvir, N. R., & O'Brien, P. T. 2013, *MNRAS*, **431**, 394  
 Wright, E. L. 2006, *PASP*, **118**, 1711  
 Zitrin, A., & Broadhurst, T. 2009, *ApJL*, **703**, L132