



Deepwater red shrimp fishery in the eastern–central Mediterranean Sea: AIS-observed monthly fishing effort and frequency over 4 years

Jacopo Pulcinella^{1,2}, Enrico Nicola Armelloni^{1,3}, Carmen Ferrà^{1,3}, Giuseppe Scarcella¹, and Anna Nora Tassetti¹

¹National Research Council, Institute of Marine Biological Resources and Biotechnologies (CNR-IRBIM), Ancona, Italy

²Almawave SpA, Rome, Italy

³Department of Biological, Geological and Environmental Sciences (BiGeA), University of Bologna, Bologna, Italy

Correspondence: Enrico N. Armelloni (enrico.armelloni@irbim.cnr.it)

Received: 16 September 2022 – Discussion started: 26 September 2022

Revised: 16 January 2023 – Accepted: 18 January 2023 – Published: 14 February 2023

Abstract. Deep-sea fishery in the Mediterranean Sea was historically driven by the commercial profitability of deepwater red shrimp (DWRS), and understanding spatiotemporal dynamics of fishing is key to comprehensively evaluate the status of these profitable resources and prevent stock collapse. A 4-year time series of observed monthly patterns and related frequency of trawling disturbance based on an automatic identification system (AIS) is provided with a resolution of $0.01^\circ \times 0.01^\circ$, accounting for the spatial extent and temporal variability in deepwater (DW) bottom-contact fisheries during the period 2015–2018. The dataset was estimated from 370 fishing vessels that were found to perform trawling in deep water (400–800 m) during the study period, and they represent a significant part of the real fleet exploiting these fishing grounds in the study area. The reconstructed deepwater trawling-effort dataset is available at: <https://doi.org/10.17882/89150> (Pulcinella et al., 2022). This large-scale and high-resolution dataset may help researchers of many scientific fields, as well as those involved in fishery management and in the update of existing management plans for deepwater red shrimp fisheries as foreseen in relevant recommendations of the General Fisheries Commission for the Mediterranean (GFCM).

1 Introduction

The continental slope is the transition area between shallow continental shelves and the deep-sea basin. It is usually characterized by marked steepness and cut by submarine canyons that enhance productivity and act as biodiversity refuges (Sardà et al., 2009). As a result of overexploitation of coastal resources and of the increasing power and technology of the vessels, trawl fisheries in the Mediterranean Sea expanded their exploration of the continental slope in the last 20 years, raising concerns for the potential effects of fishing on deep-sea ecosystems (Morato et al., 2006). Indeed, most living communities inhabiting these deep areas share characteristics typical of K-type life history – such as slow

growth patterns and long-life expectations – that make them particularly vulnerable to anthropic pressure (Tecchio et al., 2013). Endangered deep-sea species include coral communities, some of which of great environmental importance and can live for centuries if undisturbed (Bo et al., 2015), and elasmobranch communities that may suffer from bycatch and prey reduction (Barría et al., 2018). In addition to the direct effects of removal and damage of these iconic individuals, deep-sea fishing affects the three-dimensional structure of the sea bottom, modifies the turbidity and attracts scavengers, thus resulting in modifications of the overall community composition (Clark et al., 2016; Roberts, 2002). For these reasons, research aimed to protect deep-sea areas needs detailed estimations of the exploited fishing grounds, and

these have become available only in the last decade (de Juan and Leonart, 2010; Armelloni et al., 2021).

The deep-sea fishery in the Mediterranean Sea was historically driven by the commercial profitability of deepwater red shrimp (DWRS: *Aristeus antennatus* and *Aristaeomorpha foliacea*; Rinelli et al., 2013; Gorelli et al., 2016). Fisheries targeting DWRS can be considered traditional in the western and central areas of the basin (e.g., Relini and Orsi Relini, 1987; Gorelli et al., 2016), while fleets of the eastern-most countries (e.g., Greece and Türkiye) started to exploit their own deep waters only around the early 2000s (Politou et al., 2003; D’Onghia et al., 2005; Deval, 2019). Nevertheless, there is evidence that these fishing grounds were not virgin at that time, as they had already been discovered by Italian trawlers (Garofalo et al., 2007; Pinello et al., 2018; Vitale et al., 2014).

The implementation of ship-related self-reporting systems (e.g., VMS: vessel monitoring system and AIS: automatic identification system) was a breakthrough to track fishing vessel mobility. In particular, AIS unencrypted radio signals, compulsorily transmitted by European fishing vessels over 15 m to avoid collisions, result in consistent data to observe large deep-sea trawlers targeting shrimps and this has permitted the observation of the supranational capillary expansion in the eastern regions of the central Mediterranean fleets (Armelloni et al., 2021). Understanding spatiotemporal dynamics of fishing is crucial to prevent stock collapses, especially in deep fishing grounds where several episodes of initial high-reward periods followed by the phenomenon of local depletion are documented (Roberts, 2002).

In recent years, the General Fisheries Commission for the Mediterranean (GFCM) of the Food and Agriculture Organization (FAO) supported the improvement of knowledge on DWRS stock status and coordinated data collection at Mediterranean level, including a data call on fishing activity (FAO, 2021). The GFCM effort was necessary since the lack of standardized data over the Mediterranean Sea has hindered a comprehensive evaluation of the status of these profitable resources so far. The need for data collected over a broad scale is derived from the biological characteristics of DWRS, which form only a few genetically distinct populations in the central and eastern Mediterranean Sea (European Commission et al., 2022). Since a mismatch between the stock boundaries and the spatial location of the data collected undermine the accuracy of the stock assessment (e.g., Goethel et al., 2011), the early attempt to evaluate the status of the stock (Ragonese and Bianchini, 1996) was not followed by regular updates. At the time of writing, validated stock assessments exist for the Ionian area, i.e., for the Ionian geographical subareas (GSAs 18 and 19) and the Strait of Sicily (GSAs 12–16) (FAO, 2022; STECF, 2021a), all suggesting that the current level of exploitation may not be sustainable. Nevertheless, the need to continue working on the reconstruction of the exploitation pattern has been repeatedly highlighted (FAO, 2021). The present work (also conceived in the context

of FAO, 2021) is motivated by the need for an in-depth understanding of the spatiotemporal distribution of the fishing grounds for DWRS. Mapping fishing grounds is indeed necessary for a correct interpretation of fishery-dependent data, especially in cases of high fleet mobility, such as this one. A fleet may exploit a fishing ground until causing local depletion and then move to an unexploited one, keeping the catch rates steadily high (Walters, 2003). Therefore, the influence of fishing exploitation dynamics on catchability is a real concern (Paloheimo and Dickie, 1964) that can lead to stock collapses if not accurately accounted for (Ducharme-Barth and Ahrens, 2017).

Here, we provide fishing-effort data of bottom trawlers exploiting the fishing grounds located between 400 and 800 m, where DWRS is concentrated. Data are provided as monthly estimates at detailed spatial resolutions ($\sim 1 \text{ km}^2$) over 4 years (2015–2018). We envisage that the trawling-effort data provided here will be valuable for researchers who seek to understand the impacts of deepwater (DW) fishing on the targeted stocks, as well as the interactions with the deep-water community (e.g., bycatch) and/or the economic factors that drive such wide fleet mobility.

2 Methods

Fishing pressure exerted by bottom otter trawlers was estimated using AIS data over a time period of 4 years (2015–2018) in terms of monthly fishing hours and frequency of trawling disturbance.

The study area covers 15 GFCM GSAs in the eastern–central Mediterranean Sea (GSAs 12–16 and 18–27). Based on the need to investigate the main deepwater fishing grounds, focus was placed on the DW bathymetric stratum between 400 and 800 m and intersecting the study area (hereafter named DW stratum), and the fleet was subset in order to retain only trawlers that most frequently fish within it.

Specifically, an analysis was mostly performed following the approach described in Coro et al. (2022) and applying the R scripts available in the R4AIS code repository version v1.0.2 (Galdelli et al., 2021; https://github.com/MAPSirbim/AIS_data_processing/tree/v1.0.2, last access: 4 February 2023) in order to (i) reconstruct individual fishing trips, (ii) classify them on a monthly basis according predefined gear classes, and (iii) extract fishing operations. Released data were gridded at the 100th degree resolution. Grid cells were linked to the GFCM rectangles (General Fisheries Commission for the Mediterranean, 2022), measuring $0.5^\circ \times 0.5^\circ$ and identified by a 5-digit code (GFCM_COD, representing latitude and longitude by a mixed letter and number code). In particular, each 1 km cell inherited the GFCM_COD of the rectangle intersecting its centroid as well the GSA it belongs to.

The work was carried out in the framework of the FAO GFCM Deep Water Red Shrimp Working Group (FAO,

2021), which supported a further understanding of the specific fishery and validated outcomes.

2.1 Data collection

The analysis was based on the terrestrial AIS of 2015–2018, owned by CNR-IRBIM and obtained from a private provider (<http://www.astrapaging.com/>, last access: 4 February 2023), with a poll frequency of 5 min, including European Union (EU) and non-EU vessels (AIS type = 30).

Data are hosted in a local database that is continuously maintained and updated by the owner. The structure of the database, as well as the information stored in it, reflects the application of the R4AIS workflow (Galdelli et al., 2021). Historical raw signals were imported as spatial features (i.e., point geometry data type) in vessel-specific tables. Processing outcomes, such as reconstructed trips and estimated fishing segments, are instead stored as linestring geometries in related vessel-specific tables.

2.2 Data processing

The effort dataset provided by the present work is derived from fishing vessels that were classified as trawlers and that exploited the DW stratum for a substantial amount of their fishing time. To identify candidate fishing vessels, we first queried the database to select fishing tracks of trawlers that were recorded at least once a year in the DW stratum. The trawling activity in each $0.01^\circ \times 0.01^\circ$ grid cell was then estimated by (i) intersecting retrieved fishing tracks with the grid, (ii) computing the durations of each fishing portion overlapping the cell (i.e., dividing resulting length by the inherited mean fishing speed that is stored in the fishing segments' table), and (iii) aggregating fishing hours (Fh) by month and vessel. To further refine the composition of the selected fleet, fishing hours of each vessel were summed by year and depth strata (DW: deep water and SW: shallow water, respectively) and used to apply two subsequent filters. These excluded vessels spending less than a predefined temporal threshold in DW (filter #1 in Appendix A, Fig. A1) and vessels whose $Fh_{DW}/(Fh_{DW}+Fh_{SW})$ ratio was less than a predefined nondimensional threshold (filter #2 in Appendix A, Fig. A2). For both filters, different threshold values were tested to balance between the need to remove “noise” (trawlers that rarely performed deep-sea fishing activities or just fished close to the 400 m depth contour) and the intent to minimize the loss of fishing activity exerted in the reference depth stratum.

Lastly, fishing hours were preliminary aggregated by cell ID (FID) at the annual level to conduct a sensitivity analysis and exclude those cells that contribute negligibly to DW fishing activity. Resulting data were used to estimate the monthly fishing effort in all the cells of the study area, also beyond the DW stratum. Then, following the method proposed by Amoroso et al. (2018), we also estimated the trawling fre-

quency of the cells within the DW stratum as average days between trawling events over the whole time series.

3 Results

The first query to the database returned the activity of 614 trawlers (gear type OTB and OTB2, see R4AIS workflow) fishing at least once in the DW of the study area. Then, for each year, we filtered out those vessels fishing less than 20 h in DW (vertical dotted line, Figure A1). This filter reduced the number of vessels by 30 % (420 vessels), causing a decrease in the fishing activity of around 24 % in the entire area and of 0.87 % in the DW stratum. Afterwards, we excluded those vessels spending less than 5 % (0.05) (vertical dotted line, Fig. A2) of their fishing activity in DW fishing grounds. The application of this second filter decreased fishing effort by 19 % in the entire area and by 2 % in the DW stratum. The final dataset comprised 370 vessels undertaking 48 814 trips and producing fishing tracks for a total duration of 961 702 h (Table 1). Out of these, 37 % were spent exploiting DW fishing grounds.

Following a conservative approach, we finally adopted a threshold of 0.33 h (per cell per year) to exclude grid cells that contributed negligibly to DW fishing activity. Therefore, grid cells with less than 0.33 h per year were discarded, causing a decrease of about 1 % in the total DW fishing hours over the whole study period (Table 2).

From the cumulative pattern of fishing activity (in hours of fishing per square kilometers), we observed that most of DW trawling fishery is concentrated in the Strait of Sicily (GSAs 12, 13, 15 and 16), while other grounds are locally exploited in the southern Adriatic Sea (GSA 18), and offshore Crete, Greece and Türkiye (Figs. 1, 4). By contrast, an extremely low number of fishing vessels broadcasted AIS in DW areas offshore Cyprus and North African countries, and almost no deepwater operations were reported in the eastern-southern parts of the Mediterranean Sea.

The monthly time series of fishing hours highlights a clear seasonal trend, with DW trawlers being more active in spring and summer (Q2 and Q3, respectively) than in fall and winter (Q4 and Q1, Fig. 2). This seasonality affects the intensity more than the spatial extent of fishing effort, especially in those areas characterized by very concentrated fishing grounds. Such is the case of Crete (GSA 23), whose northern narrow and precise fishing grounds were persistent throughout the year but exploited during spring and summer with relatively higher intensity. On the contrary, the exploitation of its southern grounds was mostly confined in the second half of the year (Fig. 2).

The spatial distribution of trawling frequency was consistent with the pressure metrics, highlighting that DW areas identified as those where fishing activity aggregated the most (e.g., the Strait of Sicily) were fished with the highest frequencies (Fig. 3). These cells were mostly on or close to the

Table 1. Summary description of the AIS validated dataset resulting from the filtering procedure.

Year	Vessels	Fishing trips	Fishing hours	DW fishing hours	DW fishing hours/total fishing hours (%)
2015	208	11 988	213 448	75 613	35
2016	242	12 949	251 848	86 222	34
2017	236	12 544	256 977	94 557	37
2018	227	11 333	239 429	95 631	40
Total	370	48 814	961 702	352 024	37

Table 2. Sensitivity analysis and alternative thresholds tested, before identifying the validated dataset.

Threshold (annual hours in a cell)	Total DW fishing activity (h)	Proportion of DW activity retained
0	352023.7	1.00
0.33	348254.3	0.99
0.66	342738.9	0.97
1	336974.7	0.96

400 m depth contour, and close to this depth between the Sicilian grabens. The overall average interval between fishing events in the whole study area was 164 d (about 5.5 months).

Focusing again on GSA 23, Fig. 4 confirms that the heavily exploited fishing grounds off the north shore of Crete accounted for the highest trawling frequency class (less than 3 months between fishing events), while the southern fishing grounds were exploited more sporadically. Nevertheless, most of the fishing grounds appear as narrow and elongated paths repeatedly exploited over the years (trawling frequencies < 24 months), while only some larger fishing grounds are less visited (frequency over 24 months) and confined in the north area. They probably indicate exploratory fishing.

4 Discussions

This study presents one of the few model-inferred and expert-validated reconstructions of the DW fishing effort in the eastern–central Mediterranean Sea. Released AIS-based data, aggregated at a monthly time step and spanning over a period of 4 years, describe in detail the DW trawling dynamics in the study area.

Outcomes of the analysis suggest that the DW stratum is mostly fished in its central-eastern part, with the exception of the southeast where AIS data are also mostly lacking, and highlight two contrasting pictures. The Strait of Sicily has a peculiar exploitation pattern and is by far the area where the DW stratum is most extensively trawled. The observed Sicilian fishing grounds are broad, spanning over dozens of square kilometers in all directions, thanks to the wide extension of the related DW strata but also probably due to the long tradition and specialization in the DW fishery (Pinello

et al., 2018). Moving eastwards, DW fishing grounds radically change into elongated patterns and the best examples are in the southern Aegean and off Cyprus, where relatively precise repeated tows concentrate over narrow and very long fishing grounds. Interestingly, eastern Mediterranean fishing grounds are confined to small areas, even where the DW stratum is moderately broad, as is the case off the Turkish coasts.

Comparing these results with those presented in earlier studies focusing on the deep-sea fishery in the central and eastern Mediterranean Sea, similarities may be noted underlining the consistency of the data released. The Strait of Sicily and, to a lesser extent, the Italian Ionian Sea are confirmed as historically exploited fishing grounds (Ragonese and Bianchini, 1996; Carlucci et al., 2018), while the scarce information available agrees on a very low exploitation of DW fishing grounds by Greek fisheries until 2010 and thus does not permit the cross-validation of our observations (Papakōnstantinou et al., 2007; Kapiris and Thessalou-Legaki, 2011; Guillen et al., 2012). Nevertheless, literature suggests that Italian vessels exploiting eastern fishing grounds are usually based in Crete and Rhode islands (Pinello et al., 2018), where several DW fishing grounds are observed by the present study. Moving to Türkiye, available literature documents the existence of a recently established DW trawl fishery off Antalya Bay where our study maps fishing activity (Deval et al., 2009, 2016). Regarding Cyprus, no information is found on the exploitation of local fishing grounds, but the trawling activities detected in the south of the island may, again, be explained by Italian bottom trawlers operating far from their country of origin (Pinello et al., 2018).

One of the major concerns regarding the dataset released here is the lack of observed effort in the African and eastern parts of the basin as it significantly prevents a consistent picture of DW fishery in the whole study area. In the case of the Mediterranean Sea, which is relatively small and enclosed, the major well-known data gaps are due to the small number of northern African vessels equipped with AIS (Merino et al., 2019), and this overshadows all other technical issues related to the signal coverage and the exploitation of far deep-sea fishing areas (Ferrà et al., 2020; Holmes et al., 2020). In light of the above, AIS-observed DW grounds in Mediterranean southern areas – including the data released in the present work – are inevitably underestimated in terms of fishing pressure, or even lost. Importantly, this prevents the ad-

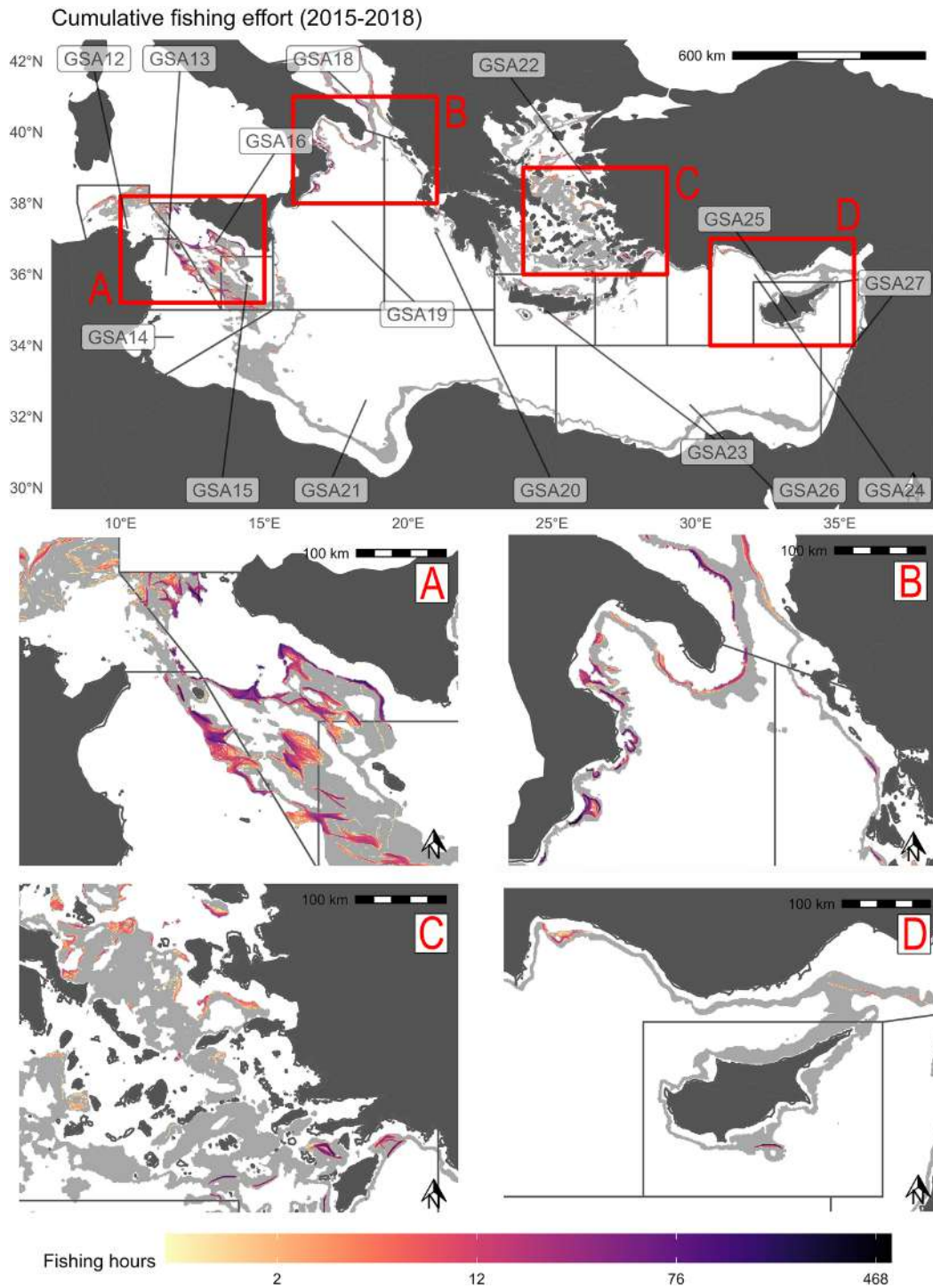


Figure 1. Cumulative fishing hours for the period 2015–2018 within the DW stratum (light gray polygon) in the eastern–central Mediterranean Sea. The borders of the management units (GSA) are reported in black.

equating monitoring of those grounds where DW fishing has recently developed (i.e., Egypt; Farrag, 2016). Underestimation of DW fishing efforts also applies to the eastern Turkish grounds where available AIS pings could be incomplete due to official traceability systems broadcasting through different

data communication types (i.e., BAGIS using Gsm, AIS and Satellite from year 2016; Tolon, 2017).

Future work should concentrate on integrating available data with additional complementary data sources such as VMS, non-cooperative synthetic aperture radar or optical im-

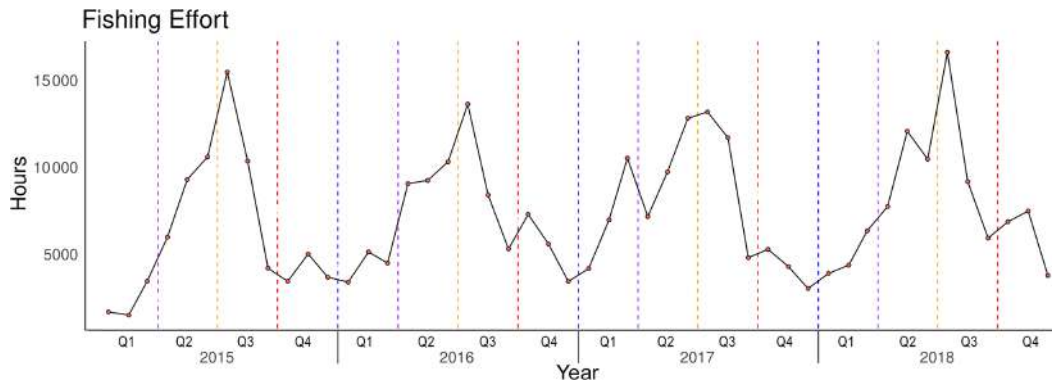


Figure 2. Monthly value (red dots) of total fishing hours within the DW stratum of the eastern–central Mediterranean Sea for the period 2015–2018. Seasonal limits (vertical dotted lines) are located at the starting day of each quarter (Q).

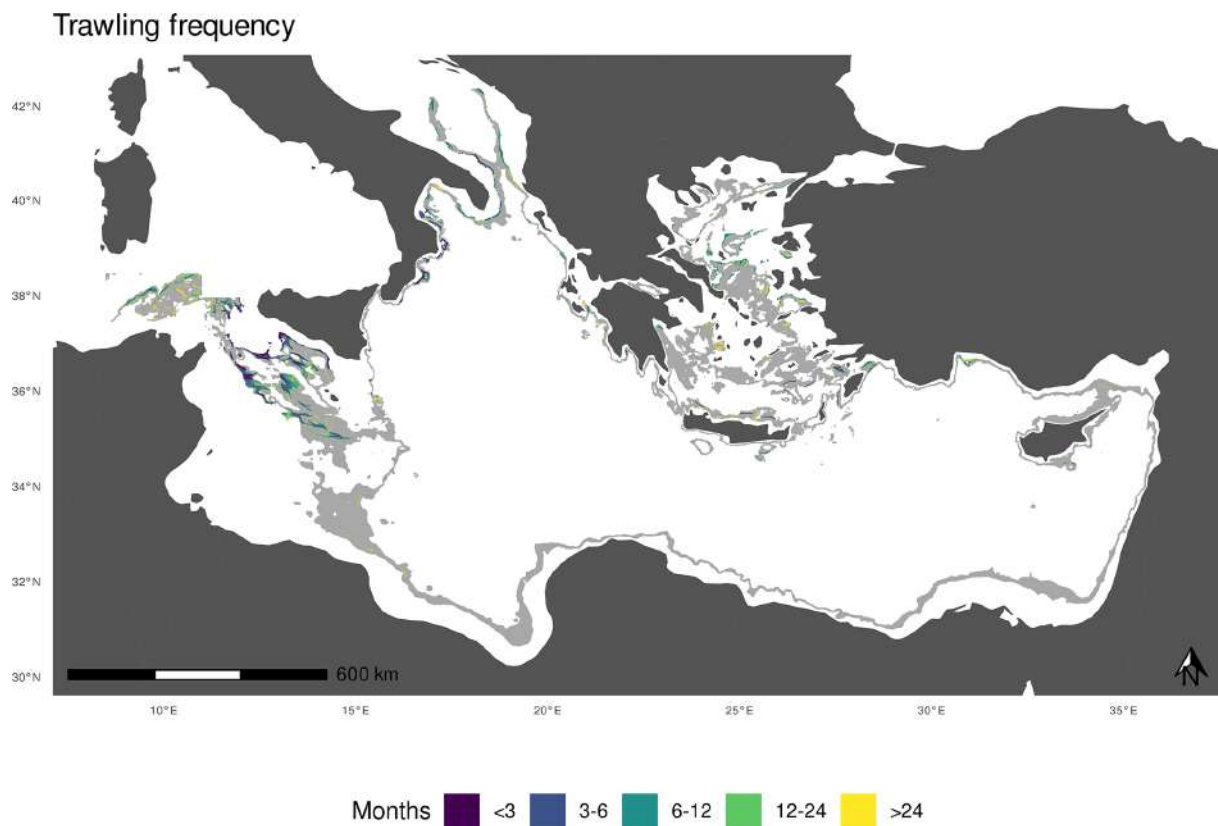


Figure 3. Frequency of deepwater trawling events at depths of 400–800 m (light gray polygon), years 2015–2018.

agery (Global Fishing Watch, 2022), as well as alternative methodological approaches that combine geographical data and expert knowledge to estimate fishing pressure (Kavadas et al., 2015; Maina et al., 2016).

Explicit fishing-effort datasets covering the entire Mediterranean are scarce, limiting possibilities of comparing the present study with other sources of information. The only resource on trawling frequency available in the literature – in addition to the data presented herein – is the one released by

Amoroso et al. (2018), in which the mentioned metric covered a smaller area of the eastern–central Mediterranean Sea (i.e., Aegean Sea) over the period 2008–2010. Trawling frequency was found as one of the most relevant in the assessment of trawling impacts on the seabed biota (Amoroso et al., 2018).

Above all, the flagship dataset on apparent fishing effort made freely available by Global Fishing Watch (GFW; Kroodsmas et al., 2018) through its marine manager portal

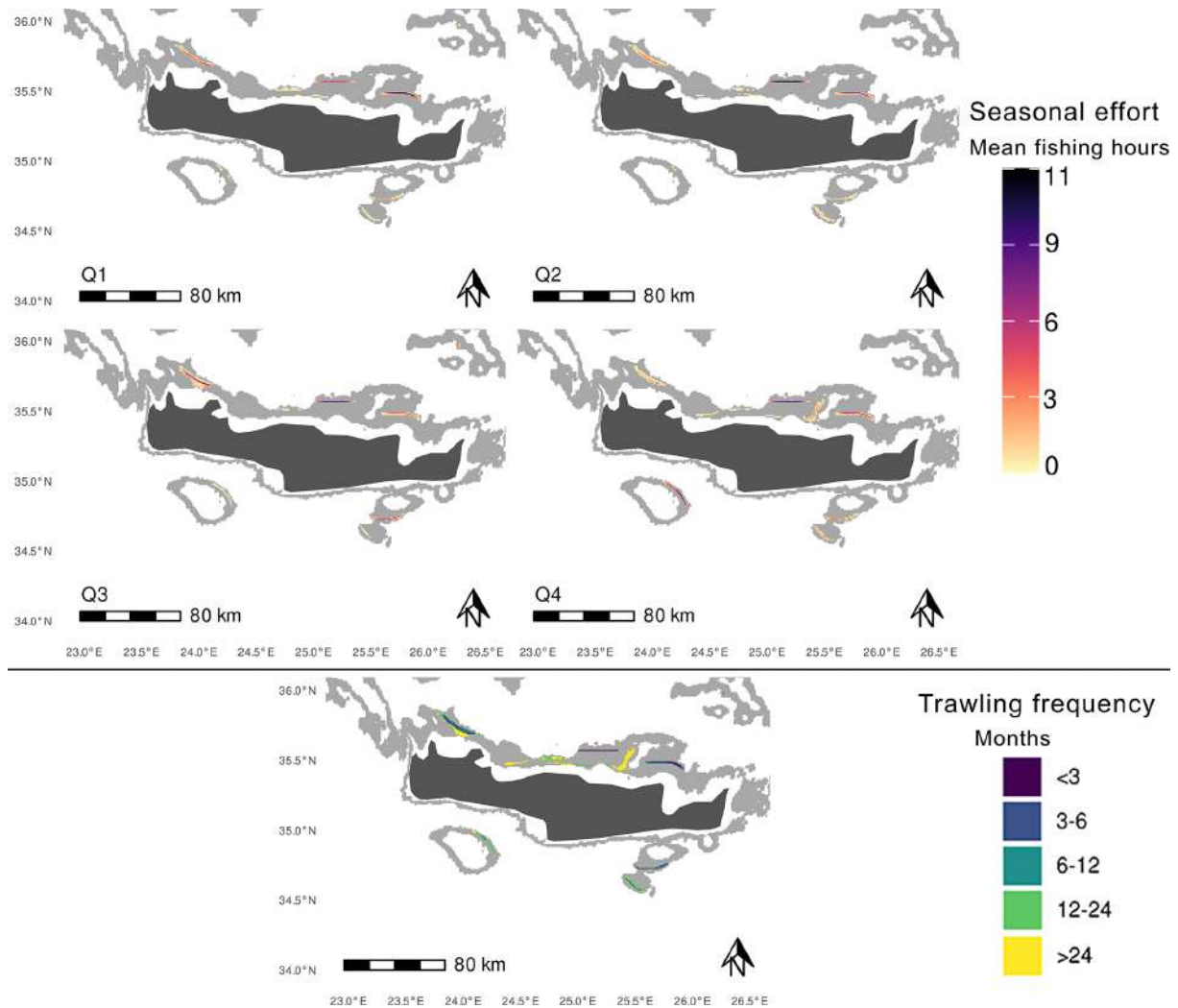


Figure 4. Seasonal distribution of fishing effort (up) and mean trawling frequency (down) in the DW stratum (light gray polygon) off the island of Crete (GSA 23), years 2015–2018. Effort is mapped in terms of average fishing hours estimated in each quarter Q. Trawling frequency, originally expressed as the mean interval in days between fishing events, was categorized by months.

is worthy of mention. Fishing fleets (i.e., vessels with the same fishing gear) are inferred using a deep-learning model trained on a sample of vessels with gears retrieved (and in part manually reviewed) from official registries (Kroodsmas et al., 2018). On the contrary, we classified single trips based on gear-specific rules that were formulated by experts working with a sample of vessels operating known gear. Even though a pure model-based approach is optimal for large-scale aggregations (Coro, 2020), it may have a worse performance at finer resolution such as that of the present study. Thus, the application of a mixed approach combining model inference and expert validating rules, such the R4AIS method used here, could in our opinion be preferable for local application at high spatial resolution.

Another spatially explicit dataset on DW trawling is provided by the Fishery Dependent Information (FDI) data call

of the European Union (STECF, 2021b). It represents the only official dataset disaggregated at fishery and area level, and the best suited to validate the DW shrimp fishery in the study area as it includes target species as a filter option (Gibin et al., 2021). Nevertheless, statistics are limited to European vessels and reported at coarser spatial and temporal resolutions (i.e., fishing day gridded at 50 km resolution), preventing a direct comparison with the dataset released here.

Last but not least, an additional, important source of official information is the VMS, which has been mandatory on EU fishing vessels since the early 2000s (e.g., Lee et al., 2010). If VMS were the key to run comparisons and integrate data gaps, not all countries in the Mediterranean region currently would operate a VMS-based fishing monitoring center, and data access has historically been restricted to government regulators or other fisheries authorities. Even though an

attempt was made in the framework of the EMODnet Med-Sea Checkpoint (Martín Míguez et al., 2019; Tassetti et al., 2016), a VMS-observed trawling effort has not yet been successfully reconstructed at Mediterranean basin level.

5 Data availability

Available deepwater trawling-effort data are publicly accessible on the SEANOE repository (<https://doi.org/10.17882/89150>, Pulcinella et al., 2022), in terms of (i) monthly hours that vessels spent operating trawl gear, (ii) number of vessels performing those activities and (iii) average interval in days between trawling events. Metrics are coherently gridded at 0.01° – using only cells intersecting the 400–800 m depth stratum of the eastern–central Mediterranean Sea (GSAs 12–16 and 18–27) – but released as separate files for a better management of their table schemas. Fishing hours per cell (and related number of vessels exerting this effort) are indeed available on a monthly basis, and easier to handle by adding the field “year”. On the contrary, a single mean trawling frequency was estimated in each cell over the full time series, irrespective of the year.

The explicit link with the GFCM statistical grid (by the field “GFCM_COD”) promotes future joining and aggregation with sources of official data.

The spatially explicit dataset provided is believed to be reliable to describe spatial and temporal patterns of deepwater trawling fishery in the eastern–central Mediterranean Sea. The dataset is accompanied by machine-readable metadata describing the main data caveats and gaps, and the R scripts used to reconstruct trawling effort. Indeed, it is the responsibility of the data user to take this information into account when reusing data; outcomes could be reproduced with own AIS transmissions.

The dataset is released under the Creative Commons Attribution license (CC-BY, v. 4.0, <https://creativecommons.org/licenses/by/4.0/deed.it>, last access: 8 August 2022), and it follows the FAIR principle of findability, accessibility, interoperability and reusability of data (Wilkinson et al., 2016).

6 Code availability

The R code used to process AIS data was made available by Galdelli et al. (2021) at https://github.com/MAPSirbim/AIS_data_processing, while the scripts required to reproduce the plots reported in the present work are available within the data repository itself (<https://doi.org/10.17882/89150>, Pulcinella et al., 2022).

Additional routines used for the processing and classification of the AIS data are available at <https://doi.org/10.5281/zenodo.7612901> (Armelloni et al., 2023).

7 Conclusions

A 4-year monthly time series of AIS-based observed patterns in deepwater bottom-contact fisheries in the eastern–central Mediterranean Sea is presented (grid resolution: 1 km), accounting for the spatial extent and temporal variability in fishing activity during the period 2015–2018. Released data depict deepwater trawling in terms of its dynamics, spatial distribution and seasonality and were envisioned to support the fulfillment of the requirements of Recommendations GFCM/42/2018/3, GFCM/42/2018/4 and GFCM/43/2019/6 on a multiannual management plan for sustainable trawl fisheries targeting giant red shrimp and blue and red shrimp in the Levant Sea (GSA 24, 25, 26 and 27), the Ionian Sea (GSA 19, 20 and 21) and the Strait of Sicily (GSA 12, 13, 14, 15 and 16), respectively, which include the provision of maps of fishing grounds. Given the fact that deep-sea fishing vessels are mostly large enough to adopt the AIS, the released data were considered to be highly representative for this study.

Released data could be used to address other issues. Among them, we should mention the understanding of the ecosystem that is impacted by this fishery. Indeed, even though a very small portion of the deepwater seabed is trawled, information on existing biocenosis should be overlaid to infer and quantify the impact on this seabed. Also, the different degree of seasonality should be investigated, as well as its main drivers (e.g., resource availability or market prices and fuel costs). These might suggest potential spatial conflicts between fishers and have management implications. Lastly, released data, if linked to logbook-based information as well as to a sample of logbook catches, may help in solving the dilemma of catch allocation and origin – a crucial missing piece of information for the assessment and management of long-ranging fisheries such as the DWRS fishery in the eastern–central Mediterranean.

We encourage the use of the spatiotemporal dataset on deepwater trawling effort provided here to all those caring for deep ecosystem conservation and sustainability of marine living resources, both of which are advised by a better understanding of the impacts induced by anthropogenic pressure.

Appendix A

In order to identify the most representative deepwater trawling fleet, two subsequent filters are considered: (i) the annual fishing activity exerted by the vessel within the 400–800 m depth stratum and (ii) the proportion between its deep-sea fishing activity and the total activity (both in shallow and deep fishing grounds). These are described in detail below:

- Filter #1 – DW fishing hours ≥ 20 . On a yearly basis, vessels fishing little within the DW stratum were filtered out. The threshold of 20 fishing hours in DW (vertical dotted line, Fig. A1) was considered appropriate as the DW fishing activity decreased only by 0.87 % during

the whole study period, while the global fishing pattern (total fishing hours within and outside DW fishing grounds) by 24 %. Filter #1 reduced the fleet from 614 to 420 vessels (~ 31 %).

- Filter #2 – DW fishing hours/total fishing hours ≥ 0.05 . On a yearly basis, vessels fishing little within the DW stratum compared to what they did outside were filtered out. Applying the threshold of 0.05 (vertical dotted line, Fig. A2), fishing activity in DW fishing grounds decreased only by 2 %, while in the global fishing activity (both in shallow and deep fishing grounds) there was a reduction of 19 %. Filter #2 reduced the fleet from 420 to 370 vessels.

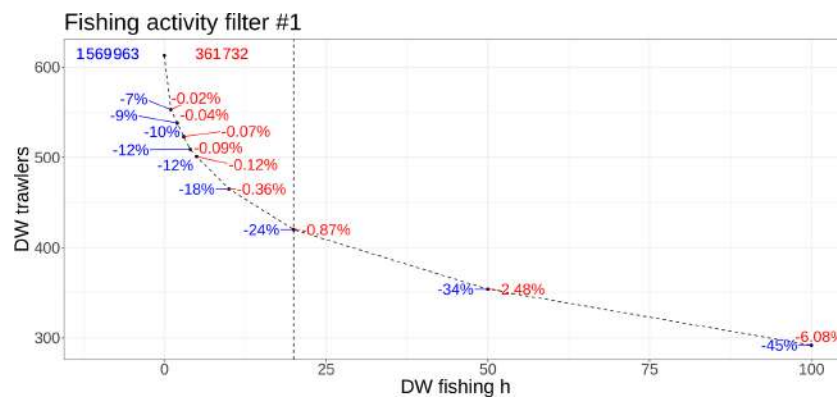


Figure A1. Overall decrease (%) in the cumulative fishing hours within the DW fishing grounds (red labels) and within the whole Mediterranean (blue labels), by filtering out vessels (y axis) that fish in DW less than the number of hours per year (x axis). Top labels show the overall initial fishing hours (over the whole study period), while the vertical dotted line represents the chosen threshold (20 h).

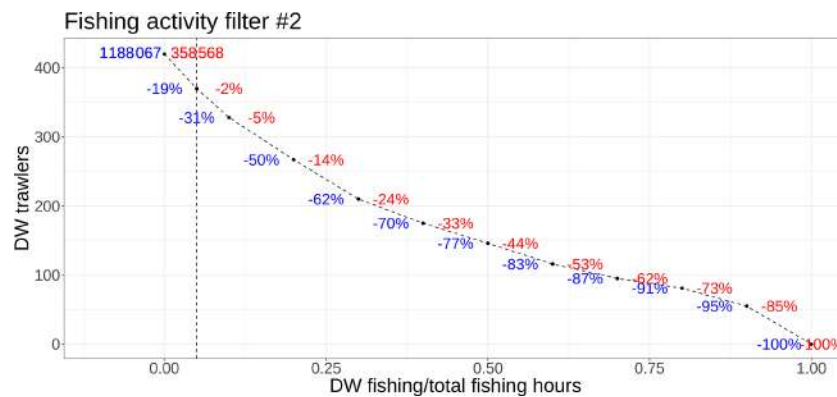


Figure A2. Overall decrease (%) in the cumulative fishing hours within the DW fishing grounds (red labels) and within the whole Mediterranean (blue labels), by filtering out vessels (y axis) that fish in DW less than a percentage compared to their total effort (x axis). Top labels show the overall initial fishing hours (over the whole study period), while the vertical dotted line represents the chosen threshold (0.05).

Author contributions. JP, ENA, CF and ANT conceived the research idea. ANT, ENA, JP and CF developed the methodology to reconstruct fishing effort and contributed to the collection and curation of data described in this paper. JP and ENA produced the results. JP, ENA and ANT wrote the original draft. CF and GS reviewed and edited the manuscript. ANT supervised the work. All authors participated in the interpretation of results and gave final approval for publication.

Competing interests. The contact author has declared that none of the authors has any competing interests.

Disclaimer. Publisher’s note: Copernicus Publications remains neutral with regard to jurisdictional claims in published maps and institutional affiliations.

Acknowledgements. We are grateful to the GFCM Deep Water Red Shrimp Working Group for its help in preparing and discussing the reconstructed trawling-effort data.

Financial support. This research has been supported by a letter of agreement between the Food and Agriculture Organization of the United Nations (FAO) under the General Fisheries Commission for the Mediterranean (GFCM) and CNR-IRBIM for the provision of “Identification and mapping of bottom trawl fishing grounds for deepwater red shrimp in the eastern–central Mediterranean Sea (GSAs 12–16, 18–27)”.

Review statement. This paper was edited by Giuseppe M. R. Manzella and reviewed by Annalisa Minelli and one anonymous referee.

References

- Amoroso, R. O., Pitcher, C. R., Rijnsdorp, A. D., McConnaughey, R. A., Parma, A. M., Suuronen, P., Eigaard, O. R., Bastardie, F., Hintzen, N. T., Althaus, F., Baird, S. J., Black, J., Buhl-Mortensen, L., Campbell, A. B., Catarino, R., Collie, J., Cowan, J. H., Durholtz, D., Engstrom, N., Fairweather, T. P., Fock, H. O., Ford, R., Gálvez, P. A., Gerritsen, H., Góngora, M. E., González, J. A., Hiddink, J. G., Hughes, K. M., Intelmann, S. S., Jenkins, C., Jonsson, P., Kainge, P., Kangas, M., Kathena, J. N., Kavadas, S., Leslie, R. W., Lewis, S. G., Lundy, M., Makin, D., Martin, J., Mazor, T., Gonzalez-Mirelis, G., Newman, S. J., Papadopoulou, N., Posen, P. E., Rochester, W., Russo, T., Sala, A., Semmens, J. M., Silva, C., Tsolos, A., Vanelslender, B., Wakefield, C. B., Wood, B. A., Hilborn, R., Kaiser, M. J., and Jennings, S.: Bottom trawl fishing footprints on the world’s continental shelves, *P. Natl. Acad. Sci. USA*, 115, E10275–E10282, <https://doi.org/10.1073/pnas.1802379115>, 2018.
- Armelloni, E. N., Tassetti, A. N., Ferrà, C., Galdelli, A., Scanu, M., Mancini, A., Fabi, G., and Scarcella, G.: AIS data, a mine of information on trawling fleet mobility in the Mediterranean Sea, *Mar. Policy*, 129, 104571, <https://doi.org/10.1016/j.marpol.2021.104571>, 2021.
- Armelloni, E. N., Pulcinella, J., Ferrà, C., and Tassetti, A. N.: irbimMAPS/dwrs_workshop_2022: Identification of DWRS fishing grounds using quantitative methods for AIS data in R (v1.0.1), Zenodo [code], <https://doi.org/10.5281/zenodo.7612901>, 2023.
- Barría, C., Navarro, J., and Coll, M.: Feeding habits of four sympatric sharks in two deep-water fishery areas of the western Mediterranean Sea, *Deep-Sea Res. Pt. I*, 142, 34–43, <https://doi.org/10.1016/j.dsr.2018.09.010>, 2018.
- Bo, M., Bavestrello, G., Angiolillo, M., Calcagnile, L., Canese, S., Cannas, R., Cau, A., D’Elia, M., D’Orlando, F., Follesa, M. C., Quarta, G., and Cau, A.: Persistence of Pristine Deep-Sea Coral Gardens in the Mediterranean Sea (SW Sardinia), *PLOS ONE*, 10, 1–21, <https://doi.org/10.1371/journal.pone.0119393>, 2015.
- Carlucci, R., Bandelj, V., Ricci, P., Capezzuto, F., Sion, L., Maiorano, P., Tursi, A., Solidoro, C., and Libralato, S.: Exploring spatio-temporal changes in the demersal and benthopelagic assemblages of the north-western Ionian Sea (central Mediterranean Sea), *Mar. Ecol. Prog. Ser.*, 598, 1–19, 2018.
- Clark, M. R., Althaus, F., Schlacher, T. A., Williams, A., Bowden, D. A., and Rowden, A. A.: The impacts of deep-sea fisheries on benthic communities: a review, *ICES J. Mar. Sci.*, 73, i51–i69, <https://doi.org/10.1093/icesjms/fsv123>, 2016.
- Coro, G.: Open science and artificial intelligence supporting blue growth, *Environ. Eng. Manag. J.*, 19, 1719–1729, 2020.
- Coro, G., Tassetti, A. N., Armelloni, E. N., Pulcinella, J., Ferrà, C., Sprovieri, M., Trincardi, F., and Scarcella, G.: COVID-19 lockdowns reveal the resilience of Adriatic Sea fisheries to forced fishing effort reduction. *Sci Rep* 12, 1052, <https://doi.org/10.1038/s41598-022-05142-w>, 2022.
- de Juan, S. and Leonart, J.: A conceptual framework for the protection of vulnerable habitats impacted by fishing activities in the Mediterranean high seas, *Ocean Coast. Manage.*, 53, 717–723, <https://doi.org/10.1016/j.ocecoaman.2010.10.005>, 2010.
- Deval, M. C.: Population Dynamics and Biological Patterns of Commercial Crustacean Species in the Antalya Bay, Eastern Mediterranean Sea: III. The Giant Red Shrimp *Aristaeomorpha foliacea* Risso, 1827, *Turk. J. Fish. Aquat. Sci.*, 20, 311–323, https://doi.org/10.4194/1303-2712-v20_4_07, 2019.
- Deval, M. C., Bök, T., Ateş, C., Ulutürk, T., and Tosunoğlu, Z.: Comparison of the size selectivity of diamond (PA) and square (PE) mesh codends for deepwater crustacean species in the Antalya Bay, eastern Mediterranean, *J. Appl. Ichthyol.*, 25, 372–380, <https://doi.org/10.1111/j.1439-0426.2009.01239.x>, 2009.
- Deval, M. C., Özgen, G., and Özbilgin, H.: Selectivity of 50 mm T0 and T90 codends for commercial shrimp species in the Turkish deepwater trawl fishery, Eastern Mediterranean, *J. Appl. Ichthyol.*, 32, 1041–1057, <https://doi.org/10.1111/jai.13128>, 2016.
- D’Onghia, G., Capezzuto, F., Mytilineou, Ch., Maiorano, P., Kapiris, K., Carlucci, R., Sion, L., and Tursi, A.: Comparison of the population structure and dynamics of *Aristeus antennatus* (Risso, 1816) between exploited and unexploited areas in the Mediterranean Sea, *Fish. Res.*, 76, 22–38, <https://doi.org/10.1016/j.fishres.2005.05.007>, 2005.

- Ducharme-Barth, N. D. and Ahrens, R. N. M.: Classification and analysis of VMS data in vertical line fisheries: incorporating uncertainty into spatial distributions, *Can. J. Fish. Aquat. Sci.*, 74, 1749–1764, <https://doi.org/10.1139/cjfas-2016-0181>, 2017.
- FAO: General Fisheries Commission for the Mediterranean, Report of the twenty-second session of the Scientific Advisory Committee on Fisheries, online, 22–25 June 2021, FAO, Rome, Italy, 214 pp., <https://doi.org/10.4060/cb7622en>, 2021.
- FAO: General Fisheries Commission for the Mediterranean, Report of the twenty-second session of the Scientific Advisory Committee on Fisheries, Rome, 21–24 June 2022, FAO, Rome, Italy, 25 pp., <https://doi.org/10.4060/cb7622en>, 2022.
- Farrag, M. M. S.: Deep-sea ichthyofauna from Eastern Mediterranean Sea, Egypt: Update and new records, *Egyptian Journal of Aquatic Research*, 42, 479–489, <https://doi.org/10.1016/j.ejar.2016.12.005>, 2016.
- Ferrà, C., Tasseti, A. N., Armelloni, E. N., Galdelli, A., Scarcella, G., and Fabi, G.: Using AIS to Attempt a Quantitative Evaluation of Unobserved Trawling Activity in the Mediterranean Sea, *Front. Mar. Sci.*, 7, <https://doi.org/10.3389/fmars.2020.580612>, 2020.
- Galdelli, A., Armelloni, E. N., Ferrà, C., Pulcinella, J., Scarcella, G., and Tasseti, A. N.: R4AIS: an R workflow to process AIS data for fishery, Zenodo [code], <https://doi.org/10.5281/zenodo.4761890>, 2021.
- Garofalo, G., Fiorentino, F., Gristina, M., Cusumano, S., and Sinacori, G.: Stability of spatial pattern of fish species diversity in the Strait of Sicily (central Mediterranean), *Hydrobiologia*, 580, 117–124, <https://doi.org/10.1007/s10750-006-0460-1>, 2007.
- General Fisheries Commission for the Mediterranean: GFCM Statistical grid, <https://www.fao.org/gfcm/data/maps/grid>, last access: 15 September 2022.
- Gibin, M., Maksims K., Maciej A., Zanzi, A., and Hekim, Z.: Fisheries landings & effort: data by c-square. European Commission, Joint Research Centre (JRC) [data set], <http://data.europa.eu/89h/00ae6659-ddde-4314-a9da-717bb2e82582>, 2022.
- Global Fishing Watch: A Radar-Illuminated Ocean Reveals Dark Fleet, <https://globalfishingwatch.org/data/radar-illuminated-ocean/>, last access: 11 September 2022.
- Goethel, D. R., Quinn II, T. J., and Cadrin, S. X.: Incorporating Spatial Structure in Stock Assessment: Movement Modeling in Marine Fish Population Dynamics, *Rev. Fish. Sci.*, 19, 119–136, <https://doi.org/10.1080/10641262.2011.557451>, 2011.
- Gorelli, G., Sardà, F., and Company, J. B.: Fishing Effort Increase and Resource Status of the Deep-Sea Red Shrimp *Aristeus antennatus* (Risso 1816) in the Northwest Mediterranean Sea Since the 1950s, 24, 192–202, <https://doi.org/10.1080/23308249.2015.1119799>, 2016.
- Guillen, J., Maynou, F., Floros, C., Sampson, D., Conides, A., and Kapiris, K.: A bio-economic evaluation of the potential for establishing a commercial fishery on two newly developed stocks: The Ionian red shrimp fishery, *Sci. Mar.*, 76, 597–605, <https://doi.org/10.3989/scimar.03434.071>, 2012.
- Holmes, S., Natale, F., Gibin, M., Guillen, J., Alessandrini, A., Vespe, M., and Osio, G. C.: Where did the vessels go? An analysis of the EU fishing fleet gravitation between home ports, fishing grounds, landing ports and markets, *PLoS ONE*, 15, e0230494, <https://doi.org/10.1371/journal.pone.0230494>, 2020.
- Kapiris, K. and Thessalou-Legaki, M.: Feeding ecology of the deep-water blue–red shrimp *Aristeus antennatus* (Decapoda: Aristeidae) in the Greek Ionian Sea (E. Mediterranean), *J. Sea Res.*, 65, 151–160, <https://doi.org/10.1016/j.seares.2010.09.005>, 2011.
- Kavadas, S., Maina, I., Damalas, D., Dokos, I., Pantazi, M., and Vassilopoulou, V.: Multi-Criteria Decision Analysis as a tool to extract fishing footprints and estimate fishing pressure: application to small scale coastal fisheries and implications for management in the context of the Maritime Spatial Planning Directive, *Mediterr. Mar. Sci.*, 16, 294–304, <https://doi.org/10.12681/mms.1087>, 2015.
- Kroodsma, D. A., Mayorga, J., Hochberg, T., Miller, N. A., Boerder, K., Ferretti, F., Wilson, A., Bergman, B., White, T. D., Block, B. A., Woods, P., Sullivan, B., Costello, C., and Worm, B.: Tracking the global footprint of fisheries, *Science*, 359, 904–908, <https://doi.org/10.1126/science.aao5646>, 2018.
- Lee, J., South, A. B., and Jennings, S.: Developing reliable, repeatable, and accessible methods to provide high-resolution estimates of fishing-effort distributions from vessel monitoring system (VMS) data, *ICES J. Mar. Sci.*, 67, 1260–1271, <https://doi.org/10.1093/icesjms/fsq010>, 2010.
- Maina, I., Kavadas, S., Katsanevakis, S., Somarakis, S., Tserpes, G., and Georgakarakos, S.: A methodological approach to identify fishing grounds: A case study on Greek trawlers, *Fish. Res.*, 183, 326–339, <https://doi.org/10.1016/j.fishres.2016.06.021>, 2016.
- Martín Míguez, B., Novellino, A., Vinci, M., Claus, S., Calewaert, J.-B., Vallius, H., Schmitt, T., Pititto, A., Giorgetti, A., Askew, N., Iona, S., Schaap, D., Pinardi, N., Harpham, Q., Kater, B. J., Populus, J., She, J., Palazov, A. V., McMeel, O., Oset, P., Lear, D., Manzella, G. M. R., Gorringer, P., Simoncelli, S., Larkin, K., Holdsworth, N., Arvanitidis, C. D., Molina Jack, M. E., Chaves Montero, M. del M., Herman, P. M. J., and Hernandez, F.: The European Marine Observation and Data Network (EMODnet): Visions and Roles of the Gateway to Marine Data in Europe, *Front. Mar. Sci.*, 6, 313, <https://doi.org/10.3389/fmars.2019.00313>, 2019.
- Merino, G., Coll, M., Granado, I., Gee, J., Kroodsma, D., Miller, N. A., and Fernandes, J. A.: FAO Area 37 – AIS-based fishing activity in the Mediterranean and Black Sea, in: Global atlas of AIS-based fishing activity: Challenges and opportunities, edited by: Taconet, M., Kroodsma, D., and Fernandes, J. A., FAO, Rome, Italy, <https://www.fao.org/publications/card/es/c/CA7012EN/> (last access: 4 February 2023), 185–198, 2019.
- Morato, T., Watson, R., Pitcher, T. J., and Pauly, D.: Fishing down the deep, *Fish Fish.*, 7, 24–34, <https://doi.org/10.1111/j.1467-2979.2006.00205.x>, 2006.
- Paloheimo, J. and Dickie, L.: Abundance and fishing success, *J. Cons. Int. Explor. Mer.*, 155, 152–163, 1964.
- Papakōnstantinou, C., Zenetos, A., Vassilopoulou, V., and Ethniko Kentro Thalassion Ereunon (Eds.): State of Hellenic fisheries, HCMR, Athen, 466 pp., <http://hdl.handle.net/20.500.11822/1862>, 2007.
- Pinello, D., Gee, J., Accadia, P., Sabatella, E. C., Vitale, S., Polymeros, K., and Fiorentino, F.: Efficiency of shallow and deep-water trawling in the Mediterranean and its implications for discard reduction, *Sci. Mar.*, 82, 97–106, <https://doi.org/10.3989/scimar.04749.22A>, 2018.
- Politou, C.-Y., Kavadas, S., Mytilineou, Ch., Tursi, A., Carlucci, R., and Lembo, G.: Fisheries Resources in the Deep

- Waters of the Eastern Mediterranean (Greek Ionian Sea), *Journal of Northwest Atlantic Fishery Science*, 31, 35–46, <https://doi.org/10.2960/J.v31.a3>, 2003.
- Pulcinella, J., Armelloni, E. N., Ferrà Vega, C., Scarcella, G., and Tasseti, A. N.: Deep-water red shrimp fishery in the Eastern-Central Mediterranean Sea: AIS-observed monthly fishing effort and frequency over four years, SEANOE [data set], <https://doi.org/10.17882/89150>, 2022.
- Ragonese, S. and Bianchini, M. L.: Growth, mortality and yield-per-recruit of the deep-water shrimp *Aristeus antennatus* (Crustacea-Aristeidae) of the Strait of Sicily (Mediterranean Sea), *Fish. Res.*, 26, 125–137, [https://doi.org/10.1016/0165-7836\(95\)00394-0](https://doi.org/10.1016/0165-7836(95)00394-0), 1996.
- Relini, G. and Orsi Relini, L.: The decline of red shrimps stocks in the gulf of Genoa, in: *Investigacion Pesquera* (Spain), 3. Colloquium: Crustacea Decapoda Mediterranea, Barcelona (Spain), Mar 1985, 245–260, ISSN 0020-9953, 1987.
- Rinelli, P., Bianchini, M., Casciaro, L., Giove, A., Mannini, A., Politou, C., Profeta, A., Ragonese, S., and Sabatini, A.: Occurrence and abundance of the deep-water red shrimps *Aristeus antennatus* (Risso, 1816) and *Aristaeomorpha foliacea* (Risso, 1827) in the central eastern Mediterranean Sea, *Cah. Biol. Mar.*, 54, 335–347, 2013.
- Roberts, C. M.: Deep impact: the rising toll of fishing in the deep sea, *Trends Ecol. Evol.*, 17, 242–245, [https://doi.org/10.1016/S0169-5347\(02\)02492-8](https://doi.org/10.1016/S0169-5347(02)02492-8), 2002.
- Sardà, F., Company, J. B., Bahamón, N., Rotllant, G., Flexas, M. M., Sánchez, J. D., Zúñiga, D., Coenjaerts, J., Orellana, D., Jordà, G., Puigdefàbregas, J., Sánchez-Vidal, A., Calafat, A., Martín, D., and Espino, M.: Relationship between environment and the occurrence of the deep-water rose shrimp *Aristeus antennatus* (Risso, 1816) in the Blanes submarine canyon (NW Mediterranean), *Prog. Oceanogr.*, 82, 227–238, <https://doi.org/10.1016/j.pocean.2009.07.001>, 2009.
- European Commission, European Climate, Infrastructure and Environment Executive Agency, Spedicato, M., Cannas, R., Mahé, K., et al.: Study on advancing fisheries assessment and management advice in the Mediterranean by aligning biological and management units of priority species MED_UNITS: final report, Publications Office of the European Union, <https://doi.org/10.2926/909535>, 2022.
- STECF: Scientific, Technical and Economic Committee for Fisheries (STECF) – Stock assessments in the Mediterranean Sea 2021, Adriatic and Ionian Seas (STECF-21-15), edited by: Mannini, A. and Simmonds, J., Publications Office of the European Union, Luxembourg, JRC127766, <https://doi.org/10.2760/59806>, 2021a.
- STECF: Scientific, Technical and Economic Committee for Fisheries (STECF) – Fisheries Dependent – Information – FDI (STECF-21-12), Publications Office of the European Union, Luxembourg, JRC127727, <https://doi.org/10.2760/3742>, 2021b.
- Tasseti, A. N., Ferrà, C., Pellini, G., Scarcella, G., and Fabi, G.: MEDSEA_CH5_Product_4/Impact of fisheries on the bottom from VMS data combined with habitat vulnerability, EMODnet Medsea Checkpoint, <https://doi.org/10.12770/aafce3aa-bddf-4c3d-bee6-90b3182c4c35>, 2016.
- Tecchio, S., Coll, M., Christensen, V., Company, J. B., Ramírez-Llodra, E., and Sardà, F.: Food web structure and vulnerability of a deep-sea ecosystem in the NW Mediterranean Sea, *Deep-Sea Res. Pt. I*, 75, 1–15, <https://doi.org/10.1016/j.dsr.2013.01.003>, 2013.
- Tolon, M. T.: Overview of fisheries traceability infrastructure in Turkey, *American Journal of Engineering Research*, 6, 281–287, 2017.
- Vitale, S., Ragonese, S., Cannizzaro, L., Fiorentino, F., and Mazzola, S.: Evidence of trawling impact on *Hoplostethus mediterraneus* in the central–eastern Mediterranean Sea, *J. Mar. Biol. Assoc. UK*, 94, 631–640, <https://doi.org/10.1017/S0025315413001884>, 2014.
- Walters, C.: Folly and fantasy in the analysis of spatial catch rate data, *Can. J. Fish. Aquat. Sci.*, 60, 1433–1436, <https://doi.org/10.1139/f03-152>, 2003.
- Wilkinson, M. D., Dumontier, M., Aalbersberg, I. J., Appleton, G., Axton, M., Baak, A., Blomberg, N., Boiten, J.-W., da Silva Santos, L. B., Bourne, P. E., Bouwman, J., Brookes, A. J., Clark, T., Crosas, M., Dillo, I., Dumon, O., Edmunds, S., Evelo, C. T., Finkers, R., Gonzalez-Beltran, A., Gray, A. J. G., Groth, P., Goble, C., Grethe, J. S., Heringa, J., 't Hoen, P. A. C., Hooft, R., Kuhn, T., Kok, R., Kok, J., Lusher, S. J., Martone, M. E., Mons, A., Packer, A. L., Persson, B., Rocca-Serra, P., Roos, M., van Schaik, R., Sansone, S.-A., Schultes, E., Sengstag, T., Slater, T., Strawn, G., Swertz, M. A., Thompson, M., van der Lei, J., van Mulligen, E., Velterop, J., Waagmeester, A., Wittenburg, P., Wolstencroft, K., Zhao, J., and Mons, B.: The FAIR Guiding Principles for scientific data management and stewardship, *Sci. Data*, 3, 160018, <https://doi.org/10.1038/sdata.2016.18>, 2016.