

Targeted therapy in *SDH*-deficient GIST

Margherita Nannini¹, Alessandro Rizzo², Valentina Indio, Angela Schipani, Annalisa Astolfi and Maria Abbondanza Pantaleo³

Abstract: The medical management of advanced gastrointestinal stromal tumors (GIST) has improved with the development of tyrosine kinase inhibitors (TKIs) targeting *KIT* and *PDGFRA* mutations. However, approximately 5–10% of GIST lack *KIT* and *PDGFRA* mutations, and about a half are deficient in succinate dehydrogenase (*SDH*) that promotes carcinogenesis by the cytoplasmic accumulation of succinate. This rare group of GIST primarily occurs in the younger patients than other subtypes, and is frequently associated with hereditary syndromes. The role of TKIs in patients with *SDH*-deficient GIST is controversial, with conflicting results; thus, there is an urgent need to uncover the disease mechanisms, treatment patterns, and responses to systemic therapy among these patients. Here, based on an extensive literature search, we have provided a rigorous overview of the current evidence on the medical treatment of *SDH*-deficient GIST.

Keywords: gastrointestinal stromal tumors, GIST, *SDH*-deficient, succinate dehydrogenase, tyrosine kinase inhibitors

Received: 4 February 2021; revised manuscript accepted: 19 May 2021.

Introduction

Approximately 10–15% of adult gastrointestinal stromal tumors (GIST) and almost all pediatric GIST do not harbor mutations in *KIT* or platelet-derived growth factor receptor alpha (*PDGFRA*), widely defined as *KIT/PDGFRA* wild-type (WT) GIST.^{1,2} The *KIT/PDGFRA* WT GIST are found to be a rather heterogeneous group of diseases than a single entity, with several different molecular alterations.³ Furthermore, the *KIT/PDGFRA* WT GIST can be classified into two main subtypes: succinate dehydrogenase (*SDH*)-competent and *SDH*-deficient, according to the *SDH* immunohistochemical (IHC) status.⁴ Moreover, alterations in the *RAS* signaling pathway (*BRAF V600E*, or *NF1* mutations), neurotrophic tyrosine kinase (*NTRK*) pathway, and fibroblast growth factor receptor (*FGFR*) signaling pathway are found in the *SDH*-competent group.^{3,4}

The *SDH*-deficient GIST, accounting for approximately 20–40% of all *KIT/PDGFRA* WT GIST, are thus defined because of loss of expression of *SDHB*, frequently due to germline and/or somatic loss-of-function mutations in any of the four *SDH* subunits (A, B, C, or D).^{4–6} In particular, germline

mutations in *SDHA* occur in approximately 30% of the *SDH*-deficient GIST, whereas those in *SDHB*, *SDHC*, and *SDHD* occur in only 20–30% of cases.^{7,8} The remaining 50% of the *SDH*-deficient GIST lack *SDHx* mutations, but show hypermethylation of the *SDHC* promoter.⁹ *SDH*-deficient GIST harboring *SDHx* germline mutations frequently occur in the setting of hereditary GIST-paraganglioma syndrome, also known as Carney–Stratakis syndrome.¹⁰ This is a rare familial condition inherited as an autosomal dominant trait with incomplete penetrance, characterized by multifocal paragangliomas and GIST, differing from Carney Triad condition due to absence of pulmonary chondromas and presence of *SDHx* germline mutations.¹¹

SDH-deficient GIST are easily recognized by clinical features, such as primary gastric localization, multifocality, and indolent clinical behavior, despite being metastatic.¹² Furthermore, *SDH*-deficient GIST share a distinct molecular background characterized by global DNA hypermethylation,⁹ a homogeneous gene expression profile characterized by overexpression of *insulin-like growth factor 1 receptor (IGF1R)*,^{13,14}

Ther Adv Med Oncol

2021, Vol. 13: 1–9

DOI: 10.1177/
17588359211023278

© The Author(s), 2021.
Article reuse guidelines:
sagepub.com/journals-
permissions

Correspondence to:
Annalisa Astolfi
Department of
Translational Medicine,
University of Ferrara, Via
Fossato di Mortara 70,
Ferrara 44121, Italy
annalisa.astolfi@unife.it

Margherita Nannini
Division of Oncology,
IRCSS Azienda
Ospedaliero-Universitaria
di Bologna, Bologna, Italy

Alessandro Rizzo
Angela Schipani
Department of
Experimental, Diagnostic
and Specialized Medicine,
University of Bologna,
Bologna, Italy

Valentina Indio
“Giorgio Prodi” Cancer
Research Center,
University of Bologna,
Bologna, Italy

**Maria Abbondanza
Pantaleo**
Division of Oncology,
IRCSS Azienda
Ospedaliero-Universitaria
di Bologna, Bologna, Italy
Department of
Experimental, Diagnostic
and Specialized Medicine,
University of Bologna,
Bologna, Italy

and gene expression-based commitment to the neural lineage cell fate.¹⁵

Specific and controlled evidence for an effective therapy for *SDH*-deficient GIST is lacking, although the hypoxic response to inactivation of *SDH* complex driven by hypoxia-inducible factor (*HIF*) transcription factor may represent a rationale for increased sensitivity to tyrosine kinase inhibitors (TKIs) with a prominent antiangiogenic mechanism of action. Moreover, genes involved in glucose metabolism, such as glucose transporter 1 (*GLUT1*), and angiogenesis, such as vascular endothelial growth factor (*VEGF*) and macrophage colony-stimulating factor (*M-CSF*), are upregulated in *KIT/PDGFR* WT GIST with respect to mutant GIST.¹⁶ Furthermore, the upregulation of *VEGF* is described in other *SDH*-deficient tumors, such as paraganglioma (PGL).¹⁷

The introduction of TKIs revolutionized the treatment of GIST because of the impressive and efficacious control of disease with imatinib as the first-line treatment, especially in *KIT* and *PDGFR* TKI-sensitive mutations. Moreover, sunitinib and regorafenib are approved as the second- and third-line treatments in patients with GIST who develop resistance to imatinib. However, the role of TKIs in patients with *SDH*-deficient GIST remains controversial and has limited and conflicting results. Therefore, this review aimed to collect all data on response to TKIs in *SDH*-deficient GIST available in the literature, including the impact of *SDH* deficiency on the molecular biology of this GIST subset.

***SDH* deficiency and the pseudohypoxic phenotype of *SDH*-deficient GIST**

The *SDH* complex, or mitochondrial complex II, serves as a bridge between the Krebs cycle and electron transport chain, and is therefore a key complex in the aerobic respiration.¹⁸ It catalyzes the oxidation of succinate to fumarate, while simultaneously supplying electrons to the respiratory chain complex *via* reduction of ubiquinone to ubiquinol.¹⁹ The *SDH* complex is a heterotetramer composed of four subunits: the flavoprotein and succinate-binding *SDHA*, and iron-sulfur protein *SDHB* are catalytic subunits; while *SDHC* and *SDHD* are the membrane-anchoring subunits responsible for ubiquinone binding.⁶ Disruption of the *SDH* complex due to biallelic loss-of-function mutations or epigenetic inactivation triggers accumulation of the “oncometabolite” succinate that is

shuttled between the mitochondrial matrix and cytoplasm. As succinate is structurally similar to α -ketoglutarate (α -KG), it inhibits the α -KG-dependent dioxygenases such as JmjC domain-containing histone lysine demethylases (*KDM*) and ten-eleven translocation (*TET*) enzymes^{20–22} (Figure 1). *TET* family members are α -KG-dependent dioxygenases involved in DNA demethylation that drives the active removal of 5-methylcytosine (5mC) from methylated CpG sites, leading to transcriptional silencing. Therefore, inhibition of the *TET* enzymes due to accumulation of succinate induces DNA hypermethylation.²³ Moreover, accumulation of succinate also inhibits the activity of prolyl-hydroxylase domain proteins (*PHD*) that regulate the oxygen-dependent hydroxylation of *HIF*- α , leading to their polyubiquitination and proteasomal degradation.²⁴ Hence, inhibition of PHD impairs degradation of *HIF*- α , leading to the stabilization of *HIF*- α and activation of hypoxia-induced gene expression.^{25,26} Finally, stabilization and upregulation of *HIF*- α activates the hypoxia-associated angiogenic program.

Overall, *SDH*-deficient tumors display genomic hypermethylation and activated hypoxic gene response, both derived from the accumulation of succinate and by the subsequent “Warburg effect,” characterized by high glucose consumption and lactate production in cancer cells, despite the presence of oxygen, a feature that is recognized as a hallmark of cancer.²⁷

The accumulation of succinate due to loss of *SDH* in chromaffin cells was found to drive DNA hypermethylation, coupled with upregulation of hypoxia-target genes and acquisition of mesenchymal and malignant features; thus, this indirectly suggests that inhibition of *HIF*- α could serve as a pharmacological target in *SDH*-deficient tumors.²⁸ However, these data were primarily derived from *in vitro* studies on paraganglioma cell models, and not specifically on *SDH*-deficient GIST cells.^{21,22,25,26,28,29}

Effectiveness of TKIs in *SDH*-deficient GIST

Due to their rarity, the treatment experience of *SDH*-deficient GIST is extremely limited, with less data available to date (Table 1). Moreover, most of the data reported in the literature on the activity of TKIs in *KIT/PDGFR* wild-type GIST, especially by sunitinib and regorafenib, lack of *SDH* deficiency characterization, mostly

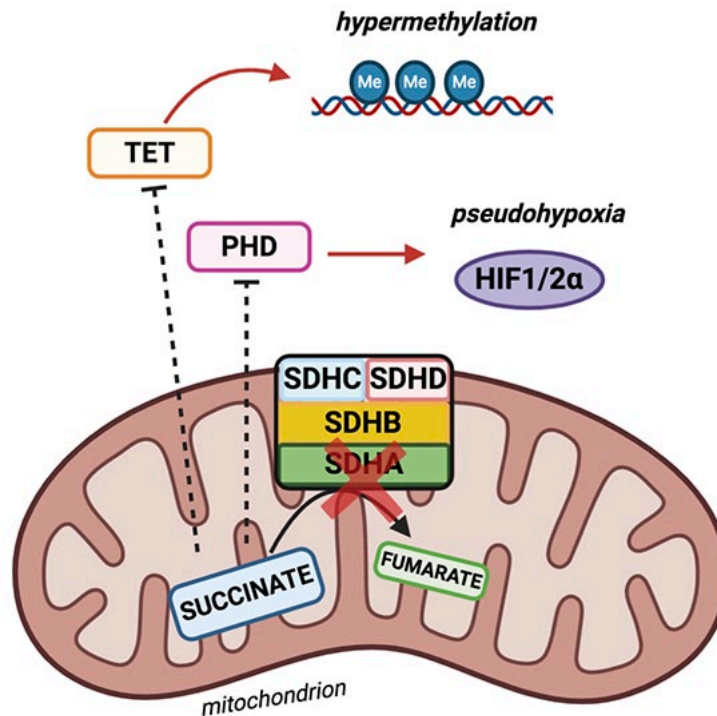


Figure 1. Schematic representing the interplay between hypoxia and *SDH*-deficient malignancies. Loss-of-function of *SDH* may lead to accumulation of succinate and production of reactive oxygen species. Additionally, succinate can induce hypoxic response in normoxic conditions, a situation known as pseudohypoxia. HIF, hypoxia-inducible factor; Me, methyl group; PHD, prolyl-hydroxylase domain proteins; SDH, succinate dehydrogenase; TET, ten-eleven translocation.

because at the time of publication this molecular characterization was still unknown or unavailable (Table 2).

Sunitinib

Sunitinib is approved as a second-line treatment in patients with imatinib-resistant metastatic GIST as, similar to imatinib, it inhibits the ATP-binding domain in *KIT* and *PDGFRA*.²⁸ Additionally, sunitinib also has an antiangiogenic action, as it inhibits VEGFR, and thus has a broader target activity.²⁹

In a retrospective study conducted by Boikos *et al.*,⁴ 87 patients with *SDH*-deficient GIST were treated with TKIs, and they reported an overall limited efficacy. Moreover, one of 49 patients receiving imatinib achieved partial response (PR) as the best response (2.0%); whereas, in 38 patients with GIST treated with sunitinib,⁴ seven patients had an objective response (18.4%), including PR ($n=3$), mixed responses (defined as progression at some sites and regression at others; $n=3$), and complete response (CR; $n=1$). In a

retrospective, observational, Chinese study comprising 12 patients with *SDH*-deficient GIST, four patients (33.3%) developed progressive disease during imatinib treatment; interestingly, all these patients achieved disease control when the systemic treatment was switched to sunitinib.³⁴

Regorafenib

Regorafenib, the current third-line treatment for metastatic GIST, is another oral, multi-kinase inhibitor that targets several protein kinases, including those involved in angiogenesis (*VEGFR1*, *VEGFR2*, *VEGFR3*, and *TIE3*).^{32,43,44} Regorafenib showed a spectrum of activity in *KIT*/*PDGFRA* WT GIST in a phase II trial, although only in six patients with *SDH*-deficient GIST, with PR ($n=2$) as the best response (33.3%).³²

Pazopanib

Pazopanib, another *KIT*, *VEGFR-1*, *VEGFR-2*, *VEGFR-3*, and *PDGFR* oral inhibitor, has been tested in a phase II study of patients with advanced

Table 1. Available data regarding clinical studies evaluating tyrosine kinase inhibitors in SDH-deficient GIST patients.

Author	Study design	Genetic profile	Treatment	Number of patients	Best response
Pantaleo <i>et al.</i> ³⁰	Case series	SDH-deficient	Nilotinib	2	1 PR, 1 SD
Ganjoo <i>et al.</i> ³¹	Prospective multicenter phase II trial	SDH-deficient	Pazopanib	1	1 SD
Boikos <i>et al.</i> ⁴	Retrospective multicenter cohort study	SDH-deficient	Imatinib	49	1 PR
			Sunitinib	38	1 CR, 3 PR, 3 MR
Ben-Ami <i>et al.</i> ³²	Prospective multicenter phase II trial	SDH-deficient	Regorafenib	6	2 PR
Heinrich <i>et al.</i> ³³	Prospective multicenter phase III trial	SDH-deficient	Imatinib	12	1 PR
Liu <i>et al.</i> ³⁴	Retrospective single-center cohort study	SDH-deficient	Sunitinib	4	4 SD
Call <i>et al.</i> ³⁵	Retrospective multicenter cohort study	SDH-deficient + likely SDH-deficient	Imatinib (1L)	57	mPFS 14.7 months
			Sunitinib (2L)	42	mPFS 18.0 months
			Regorafenib (3L+)	9	mPFS 42.9 months
Von Mehren <i>et al.</i> ³⁶	Prospective multicenter phase II trial	SDH-deficient	Linsitinib	15	9-month CBR: 40%
					9-month PFS: 52%

1L, first-line; 2L, second-line; 3L+, third- or later-line; CBR, clinical benefit rate; CR, complete response; mPFS, median progression-free survival; MR, mixed response; PFS, progression-free survival; PR, partial response; SD, stable disease; SDH, succinate dehydrogenase.

Table 2. *KIT/PDGFR*A wild-type patients GIST patients treated with anti-angiogenic inhibitors.

Author	<i>KIT/PDGFR</i> A wild-type patients	Treatment
Nannini <i>et al.</i> ³⁷	3	Regorafenib
Rutkowski <i>et al.</i> ³⁸	9	Sunitinib
Reichardt <i>et al.</i> ³⁹	9	Sunitinib
Rutkowski <i>et al.</i> ⁴⁰	10	Sunitinib
George <i>et al.</i> ⁴¹	8	Regorafenib
Heinrich <i>et al.</i> ⁴²	9	Sunitinib

GIST whose disease progressed on imatinib and sunitinib.³¹ A total of 25 patients were enrolled in the trial, including a case of SDH-deficient GIST

who showed prolonged disease control after 17 cycles of treatment.

Nilotinib

The second-generation TKI, nilotinib, was designed to overcome resistance to imatinib. Moreover, nilotinib shows activity against *BCR-ABL*, discoidin domain receptor (*DDR*), *KIT*, *PDGFR*, and colony-stimulating factor receptor-1 (*CSF-1R*) kinases.⁴⁵ In an *in vitro* setting, nilotinib displayed antitumor activity against imatinib-resistant cell lines, and achieved intracellular concentrations superior than those with imatinib.⁴⁶ The clinical experience of nilotinib in SDH-deficient GIST is limited to the report of two young adult patients who achieved remarkable and durable response to 800 mg daily dosage of nilotinib. Additionally, these patients showed

stable disease after 42 months and 46 months, respectively, according to the RECIST criteria, with the latter also presenting PR after 9 months according to Choi criteria.³⁰ Considering the indolent course of *SDH*-deficient GIST itself, the activity of nilotinib in this subset of patients remains controversial.

Linsitinib

SDH-deficient GISTs are characterized by over-expression of *IGF1R*.^{13,14} Thus, the oral *IGF-1R* TKI linsitinib has been tested in a recent phase II study on adult and pediatric patients with wild-type GIST, including 15 *SDH*-deficient GIST.³⁶ No objective responses were detected, but the clinical benefit rate (CBR) and progression-free survival (PFS) at 9 months were 40% and 52%, respectively, suggesting a potential benefit of linsitinib in this patient population.

Vandetanib

Vandetanib, another oral epidermal growth factor receptor (*EGFR*), *VEGFR*, and *RET* inhibitor, has been evaluated in a phase II study of nine pediatric and adult patients with *SDH*-deficient GIST; however, no CR or PR were observed, and only two cases with stable disease were observed, suggesting that vandetanib is not active in this patient population.⁴⁷

Discussion

It remains doubtful whether patients with *SDH*-deficient GIST may benefit from available TKIs, although absence of mutations in *KIT* or *PDGFRA* should discourage the administration of imatinib. However, evaluation of the efficacy of TKIs in this patient population is complex. Furthermore, the rarity of this molecular subtype is a potential limit for any prospective trial that could inevitably suffer from a slow accrual, as witnessed in a phase II REGISTRI trial (NCT02638766), a single-arm, multicenter clinical trial aimed to evaluate the efficacy of regorafenib in the first-line setting for metastatic and/or unresectable *KIT/PDGFRA* WT GIST.⁴⁸ Moreover, as the REGISTRI trial focuses on *KIT/PDGFRA* wild-type GISTs and is not dedicated only to *SDH*-deficient GIST, the effectiveness data will be stratified according to all different molecular subfamilies of the *KIT/PDGFRA* wild-type study population. A trial with rogaratinib, a novel pan-FGFR inhibitor, is ongoing, specifically in patients with *SDH*-deficient GIST who have received at least one standard therapy (NCT04595747).⁴⁹ The trial

has been opened recently, and no information on the enrollment trend is available yet.

The retrospective evaluation attempted with this systematic review is hampered by the fact that in the past, a vast majority of *SDH*-deficient GIST were described as *KIT/PDGFRA* wild-type GIST. Additionally, other preliminary evidence of the clinical benefit of sunitinib in the pediatric and young adult patients with GIST populations was reported, but these data were not evaluated in patients with *SDH* deficiency as the diagnoses were made a considerable time before.³⁸ Moreover, variability in genetic determinants of *SDH* deficiency could also hamper the assessment of definitive conclusions for efficacy of TKI in *SDH*-deficient GIST. Furthermore, defective function of *SDH* could be due to different genetic hits, such as truncating or missense mutations affecting different subunits, or promoter hypermethylation; however, no definitive data are currently available on the effects of these variable pathogenetic events on the phenotypic traits deriving from *SDH* deficiency, such as succinate accumulation, pseudohypoxia, enhanced glycolysis, or hypermethylator phenotype.

To address the issue of limited patient data for this rare GIST subtype, which frequently remains undiagnosed, the Life Raft Group (LRG)—an international nonprofit medical research and advocacy organization—developed an *SDH* category system to identify patients with potential *SDH*-deficient GIST and presented results of a retrospective study on patient-reported treatment responses to TKIs and outcomes.³⁵ With the limitation of a self-reported analysis, a higher percentage of patients who received second-line sunitinib reported tumor shrinkage (36%) than those who received first-line imatinib (14.6%). Moreover, a superior PFS across treatment regimens in patients with Known/Likely *SDH*-deficient GIST was observed, which could be related to both the greater activity of sunitinib and regorafenib in this cohort of patients and to the indolent behavior of *SDH*-deficient GIST.

Second, as stated by Boikos *et al.*⁴ due to the frequent indolent behavior of *SDH*-deficient GIST, stable disease is difficult to interpret as this finding is primarily observed in untreated patients. Therefore, a treatment-related stable disease should be reliable only in patients who have a documented progressive disease during treatment with imatinib or a watchful waiting program. This

should be considered as a relevant selection parameter for any clinical prospective trial with this GIST molecular subtype.

Third, in addition to the pseudohypoxic phenotype, *SDH*-deficient GIST are characterized by global DNA hypermethylation that represents an alternative epigenetic mechanism due to absence of SDH complex not driven by *SDHx* mutations.^{50,51} Moreover, the hypermethylation status correlates with aberrant expression of *FGF4*, by disrupting the binding of CTCF at DNA regions located on the boundaries of the *FGF3/FGF4* locus.⁵² This *FGF4* autocrine loop may act as a surrogate to the *KIT/PDGFR*A alterations to promote tumorigenesis and growth in *SDH*-deficient GIST. This feature may explain the greater sensitivity to regorafenib or pazopanib in *SDH*-deficient GIST, as both also target the FGF/FGFR signaling pathway. Additionally, it was recently found that *FGFR1* and *FGFR2*, as well as *FGF4*, *FGF2*, *FGF7*, and *FGF10* ligands are highly expressed in *SDH*-deficient GIST.⁵³ This may unleash novel potential treatment strategies for this rare subset of GIST, such as selective FGF/FGFR inhibitors.⁵⁴ Consistent with this assumption, the effects of rogaratinib, a novel pan-FGFR inhibitor, is currently being explored in a phase II, single-arm study on patients with a sarcoma harboring an alteration in *FGFR-1*, *-2*, *-3*, or *-4* and in patients with metastatic *SDH*-deficient GIST, regardless of *FGFR* status.⁴⁹

Moreover, due to this hypermethylation phenotype, O6-methylguanine-DNA methyltransferase (*MGMT*) promoter methylation has been recently found to be markedly prevalent in *SDH*-deficient GIST.⁵⁵ This molecular hallmark could be a proof of concept of sensitivity of *SDH*-deficient GIST to alkylating agents, as already proven in glioblastoma and neuroendocrine tumors,^{56,57} and it has also been observed in *SDH*-mutant paraganglioma and pheochromocytoma.⁵⁸ Thus, based on this assumption, a phase II trial of temozolomide is ongoing (NCT03556384) specifically with patients with metastatic *SDH*-deficient GIST, and not as in two previous trials conducted in an unselected GIST population.^{59,60}

Finally, the *IGF-1R* inhibition led to no objective responses, but only a good disease control in the overall *KIT/PDGFR*A WT GIST cohort, predominantly comprising *SDH*-deficient GIST; this suggests that *IGF-1R* may not be a pathogenetic

driver in *SDH*-deficient GIST and that the molecular implication of the receptor/pathway in this subset of patients remains complicated to be defined.^{9,10,45}

Identification of a better molecular landscape in *SDH*-deficient GIST will possibly provide a wider window of potential therapeutic opportunities for this treatment-orphan GIST subtype.⁵³

Conclusions

SDH-deficient GIST are a rare molecular subset of GIST, that remain unrecognized, with a clinical behavior ranging from a long-term disease stability to an aggressive and rapidly progressive course. *SDH* deficiency theoretically confers a greater sensitivity to TKIs with a prominent antiangiogenic mechanism of action, even if the efficacy data are very limited and difficult to extract from available studies. Considering the uniqueness and peculiarity of this disease subtype, the only feasible approach is that all patients with *SDH*-deficient GIST should refer to specialized centers to allow collection of data and reliable clinical evidence.

Conflict of interest statement

The authors declare that there is no conflict of interest.


Funding

The authors received no financial support for the research, authorship, and/or publication of this article.

ORCID iDs

Margherita Nannini  <https://orcid.org/0000-0002-2103-1960>

Alessandro Rizzo  <https://orcid.org/0000-0002-5257-8678>

Maria Abbondanza Pantaleo  <https://orcid.org/0000-0002-0177-6957>

References

1. Corless CL, Fletcher JA and Heinrich MC. Biology of gastrointestinal stromal tumors. *J Clin Oncol* 2004; 22: 3813–3825.
2. Janeway KA and Pappo AS. Pediatric gastrointestinal stromal tumor. *Hematol Oncol Clin North Am* 2009; 23: 15–34.

3. Nannini M, Urbini M, Astolfi A, *et al.* The progressive fragmentation of the KIT/PDGFR α wild-type (WT) gastrointestinal stromal tumors (GIST). *J Transl Med* 2017; 15: 125.
4. Boikos SA, Pappo AS, Killian JK, *et al.* Molecular subtypes of KIT/PDGFR α wild-type gastrointestinal stromal tumors. *JAMA Oncol* 2016; 2: 922.
5. Miettinen M, Wang ZF, Sarlomo-Rikala M, *et al.* Succinate dehydrogenase-deficient GISTs. *Am J Surg Pathol* 2011; 35: 1712–1721.
6. Pantaleo MA, Astolfi A, Urbini M, *et al.* Analysis of all subunits, SDHA, SDHB, SDHC, SDHD, of the succinate dehydrogenase complex in KIT/PDGFR α wild-type GIST. *Eur J Hum Genet* 2014; 22: 32–39.
7. Pantaleo MA, Astolfi A, Indio V, *et al.* SDHA loss-of-function mutations in KIT-PDGFR α wild-type gastrointestinal stromal tumors identified by massively parallel sequencing. *J Natl Cancer Inst* 2011; 103: 983–987.
8. Miettinen M and Lasota J. Succinate dehydrogenase deficient gastrointestinal stromal tumors (GISTs) – a review. *Int J Biochem Cell Biol* 2014; 53: 514–519.
9. Killian JK, Kim SY, Miettinen M, *et al.* Succinate dehydrogenase mutation underlies global epigenomic divergence in gastrointestinal stromal tumor. *Cancer Discov* 2013; 3: 648–657.
10. Pasini B, McWhinney SR, Bei T, *et al.* Clinical and molecular genetics of patients with the Carney-Stratakis syndrome and germline mutations of the genes coding for the succinate dehydrogenase subunits SDHB, SDHC, and SDHD. *Eur J Hum Genet* 2008; 16: 79–88.
11. Stratakis CA and Carney JA. The triad of paragangliomas, gastric stromal tumours and pulmonary chondromas (Carney triad), and the dyad of paragangliomas and gastric stromal sarcomas (Carney-Stratakis syndrome): molecular genetics and clinical implications. *J Intern Med* 2009; 266: 43–52.
12. Pantaleo MA, Lolli C, Nannini M, *et al.* Good survival outcome of metastatic SDH-deficient gastrointestinal stromal tumors harboring SDHA mutations. *Genet Med* 2015; 17: 391–395.
13. Beadling C, Patterson J, Justusson E, *et al.* Gene expression of the IGF pathway family distinguishes subsets of gastrointestinal stromal tumors wild type for KIT and PDGFR α . *Cancer Med* 2013; 2: 21–31.
14. Nannini M, Astolfi A, Paterini P, *et al.* Expression of insulin growth factor receptor 1 (IGF1R) in KIT/PDGFR α wild-type GIST with succinate dehydrogenase complex dysfunction. *Future Oncol* 2012; 9: 121–126.
15. Pantaleo MA, Astolfi A, Nannini M, *et al.* Differential expression of neural markers in KIT and PDGFR α wild-type gastrointestinal stromal tumours. *Histopathology* 2011; 59: 1071–1080.
16. Antonescu CR, Viale A, Sarran L, *et al.* Gene expression in gastrointestinal stromal tumors is distinguished by KIT genotype and anatomic site. *Clin Cancer Res* 2004; 10: 3282–3290.
17. Favier J, Igaz P, Burnichon N, *et al.* Rationale for anti-angiogenic therapy in pheochromocytoma and paraganglioma. *Endocr Pathol* 2012; 23: 34–42.
18. Kinnaird A, Zhao S, Wellen KE, *et al.* Metabolic control of epigenetics in cancer. *Nat Rev Cancer* 2016; 16: 694–707.
19. Letouzé E, Martinelli C, Loriot C, *et al.* SDH mutations establish a hypermethylator phenotype in paraganglioma. *Cancer Cell* 2013; 23: 739–752.
20. Xiao M, Yang H, Xu W, *et al.* Inhibition of alpha-KG-dependent histone and DNA demethylases by fumarate and succinate that are accumulated in mutations of FH and SDH tumor suppressors. *Genes Dev* 2012; 26: 1326–1338.
21. An J, Rao A and Ko M. TET family dioxygenases and DNA demethylation in stem cells and cancers. *Exp Mol Med* 2017; 49: e323.
22. Fong GH and Takeda K. Role and regulation of prolyl hydroxylase domain proteins. *Cell Death Differ* 2008; 15: 635–641.
23. Brière JJ, Favier J, Bénil P, *et al.* Mitochondrial succinate is instrumental for HIF1 α nuclear translocation in SDHA-mutant fibroblasts under normoxic conditions. *Hum Mol Genet* 2005; 14: 3263–3269.
24. Selak MA, Armour SM, MacKenzie ED, *et al.* Succinate links TCA cycle dysfunction to oncogenesis by inhibiting HIF- α prolyl hydroxylase. *Cancer Cell* 2005; 7: 77–85.
25. Hanahan D and Weinberg RA. Hallmarks of cancer: the next generation. *Cell* 2011; 144: 646–674.
26. Morin A, Goncalves J, Moog S, *et al.* TET-mediated hypermethylation primes SDH-deficient cells for HIF2 α -driven mesenchymal transition. *Cell Rep* 2020; 30: 4551–4566.e7.
27. King A, Selak MA and Gottlieb E. Succinate dehydrogenase and fumarate hydratase: linking mitochondrial dysfunction and cancer. *Oncogene* 2006; 25: 4675–4682.

28. Doyle LA and Hornick JL. Gastrointestinal stromal tumours: from KIT to succinate dehydrogenase. *Histopathology* 2014; 64: 53–67.
29. Von Mehren M and Joensuu H. Gastrointestinal stromal tumors. *J Clin Oncol* 2018; 36: 136–143.
30. Pantaleo MA, Nannini M, Saponara M, *et al.*; GIST Study Group, University of Bologna, Bologna, Italy. Impressive long-term disease stabilization by nilotinib in two pretreated patients with KIT/PDGFR wild-type metastatic gastrointestinal stromal tumours. *Anticancer Drugs* 2012; 23: 567–572
31. Ganjoo KN, Villalobos VM, Kamaya A, *et al.* A multicenter phase II study of pazopanib in patients with advanced gastrointestinal stromal tumors (GIST) following failure of at least imatinib and sunitinib. *Ann Oncol* 2014; 25: 236–240.
32. Ben-Ami E, Barysaukas CM, Von Mehren M, *et al.* Long-term follow-up results of the multicenter phase II trial of regorafenib in patients with metastatic and/or unresectable GI stromal tumor after failure of standard tyrosine kinase inhibitor therapy. *Ann Oncol* 2016; 27: 1794–1799.
33. Heinrich MC, Rankin C, Blanke CD, *et al.* Correlation of long-term results of imatinib in advanced gastrointestinal stromal tumors with next-generation sequencing results: analysis of phase 3 SWOG intergroup trial S0033. *JAMA Oncol* 2017; 3: 944–952.
34. Liu W, Zeng X, Wu X, *et al.* Clinicopathologic study of succinate-dehydrogenase-deficient gastrointestinal stromal tumors: a single-institutional experience in China. *Medicine (Baltimore)* 2017; 96: e7668.
35. Call JW, Wang Y, Rothschild S, *et al.* Treatment responses in SDH-deficient GIST. *LRG Science*, <https://liferaftgroup.org/2019/08/treatment-responses-in-sdh-deficient-gist-2/> (2019, accessed 4 June 2021).
36. Von Mehren M, George S, Heinrich MC, *et al.* Linsitinib (OSI-906) for the treatment of adult and pediatric wild-type gastrointestinal stromal tumors, a SARC phase II study. *Clin Cancer Res* 2020; 26: 1837–1845.
37. Nannini M, Nigro MC, Vincenzi B, *et al.* Personalization of regorafenib treatment in metastatic gastrointestinal stromal tumours in real-life clinical practice. *Ther Adv Med Oncol* 2017; 9: 731–739.
38. Rutkowski P, Magnan H, Chou AJ, *et al.* Treatment of gastrointestinal stromal tumours in paediatric and young adult patients with sunitinib: a multicentre case series. *BMC Cancer* 2017; 17: 71.
39. Reichardt P, Demetri GD, Gelderblom H, *et al.* Correlation of KIT and PDGFRA mutational status with clinical benefit in patients with gastrointestinal stromal tumor treated with sunitinib in a worldwide treatment-use trial. *BMC Cancer* 2016; 16: 22.
40. Rutkowski P, Bylina E, Klimczak A, *et al.* The outcome and predictive factors of sunitinib therapy in advanced gastrointestinal stromal tumors (GIST) after imatinib failure – one institution study. *BMC Cancer* 2012; 12: 107.
41. George S, Wang Q, Heinrich MC, *et al.* Efficacy and safety of regorafenib in patients with metastatic and/or unresectable GI stromal tumor after failure of imatinib and sunitinib: a multicenter phase II trial. *J Clin Oncol* 2012; 30: 2401–2407.
42. Heinrich MC, Maki RG, Corless CL, *et al.* Primary and secondary kinase genotypes correlate with the biological and clinical activity of sunitinib in imatinib-resistant gastrointestinal stromal tumor. *J Clin Oncol* 2008; 26: 5352–5359.
43. Demetri GD, Reichardt P, Kang YK, *et al.*; GRID Study Investigators. Efficacy and safety of regorafenib for advanced gastrointestinal stromal tumours after failure of imatinib and sunitinib (GRID): an international, multicentre, randomised, placebo-controlled, phase 3 trial. *Lancet* 2013; 381: 295–302.
44. Rizzo A, Nannini M, Novelli M, *et al.* Dose reduction and discontinuation of standard-dose regorafenib associated with adverse drug events in cancer patients: a systematic review and meta-analysis. *Ther Adv Med Oncol* 2020; 12: 1758835920936932.
45. Rossari F, Minutolo F and Orciuolo E. Past, present, and future of Bcr-Abl inhibitors: from chemical development to clinical efficacy. *J Hematol Oncol* 2018; 11: 84.
46. Sacha T and Saglio G. Nilotinib in the treatment of chronic myeloid leukemia. *Future Oncol* 2019; 15: 953–965.
47. Glod J, Arnaldez FI, Wiener L, *et al.* A phase II trial of vandetanib in children and adults with succinate dehydrogenase-deficient gastrointestinal stromal tumor. *Clin Cancer Res* 2019; 25: 6302–6308.
48. ClinicalTrials.gov Identifier: NCT02638766. Single agent regorafenib in first-line for metastatic/unresectable KIT/PDGFR wild type GIST (REGISTRI), <https://clinicaltrials.gov/>

- ct2/show/NCT02638766 (2015, accessed 4 June 2021).
49. ClinicalTrials.gov Identifier: NCT04595747. Testing the anti-cancer drug, rogaratinib (BAY 1163877), for treatment of advanced sarcoma with alteration in fibroblast growth factor receptor (FGFR 1-4), and in patients with SDH-deficient gastrointestinal stromal tumor (GIST), <https://clinicaltrials.gov/ct2/show/NCT04595747> (2020, accessed 4 June 2021).
 50. Killian JK, Miettinen M, Walker RL, *et al.* Recurrent epimutation of SDHC in gastrointestinal stromal tumors. *Sci Transl Med* 2014; 6: 268ra177.
 51. Urbini M, Astolfi A, Indio V, *et al.* SDHC methylation in gastrointestinal stromal tumors (GIST): a case report. *BMC Med Genet* 2015; 16: 87.
 52. Flavahan WA, Drier Y, Johnstone SE, *et al.* Altered chromosomal topology drives oncogenic programs in SDH-deficient GISTs. *Nature* 2019; 575: 229–233.
 53. Indio V, Schipani A, Nannini M, *et al.* Gene expression landscape of SDH-deficient gastrointestinal stromal tumors. *J Clin Med* 2021; 10: 1057.
 54. Astolfi A, Pantaleo MA, Indio V, *et al.* The emerging role of the FGF/FGFR pathway in gastrointestinal stromal tumor. *Int J Mol Sci* 2020; 21: 3313.
 55. Lou L, Zhang W, Li J, *et al.* Abnormal MGMT promoter methylation in gastrointestinal stromal tumors: genetic susceptibility and association with clinical outcome. *Cancer Manag Res* 2020; 12: 9941–9952.
 56. Hegi ME, Diserens A-C, Gorlia T, *et al.* MGMT gene silencing and benefit from temozolomide in glioblastoma. *N Engl J Med* 2005; 352: 997–1003.
 57. Kulke MH, Hornick JL, Fraumeni C, *et al.* O6-methylguanine DNA methyltransferase deficiency and response to temozolomide-based therapy in patients with neuroendocrine tumors. *Clin Cancer Res* 2009; 15: 338–345.
 58. Hadoux J, Favier J, Scoazec JY, *et al.* SDHB mutations are associated with response to temozolomide in patients with metastatic pheochromocytoma or paraganglioma. *Int J Cancer* 2014; 135: 2711–2720.
 59. Garcia del Muro X, Lopez-Pousa A, Martin J, *et al.*; Spanish Group for Research on Sarcomas. A phase II trial of temozolomide as a 6-week, continuous, oral schedule in patients with advanced soft tissue sarcoma: a study by the Spanish Group for Research on Sarcomas. *Cancer* 2005; 104: 1706–1712.
 60. Trent JC, Beach J, Burgess MA, *et al.* A two-arm phase II study of temozolomide in patients with advanced gastrointestinal stromal tumors and other soft tissue sarcomas. *Cancer* 2003; 98: 2693–2699.

Visit SAGE journals online
[journals.sagepub.com/
 home/tam](https://journals.sagepub.com/home/tam)

 SAGE journals