

Article

Space-Compliant Design of a Millimeter-Wave GaN-on-Si Stacked Power Amplifier Cell through Electro-Magnetic and Thermal Simulations

Chiara Ramella ^{1,2,*} , Marco Pirola ^{1,2} , Corrado Florian ^{2,3}  and Paolo Colantonio ^{2,4} 

¹ Department Electronics and Telecommunications, Politecnico di Torino, 10129 Torino, Italy; marco.pirola@polito.it

² Microwave Engineering Center for Space Applications (MECSA), 00133 Roma, Italy; corrado.florian@uniroma2.it (C.F.); paolo.colantonio@uniroma2.it (P.C.)

³ Department Electrical Electronic Information Engineering, Università Bologna, 40126 Bologna, Italy

⁴ Department Electronic Engineering, Università Degli Studi di Roma Tor Vergata, 00133 Roma, Italy

* Correspondence: chiara.ramella@polito.it

Abstract: The stacked power amplifier is a widely adopted solution in CMOS technology to overcome breakdown limits. Its application to compound semiconductor technology is instead rather limited especially at very high frequency, where device parasitic reactances make the design extremely challenging, and in gallium nitride technology, which already offers high breakdown voltages. Indeed, the stacked topology can also be advantageous in such scenarios as it can enhance gain and chip compactness. Moreover, the higher supply voltages and lower supply currents beneficially impact on reliability, thus making the stacked configuration an attractive solution for space applications. This paper details the design of two stacked cells, differing in their inter-stage matching strategy, conceived for space applications at Ka-band in 100 nm GaN-on-Si technology. In particular, the design challenges related to the thermal constraints posed by space reliability and to the electro-magnetic cross-talk issues that may arise at millimeter-wave frequencies are discussed. The best cell achieves at saturation, in simulation, 3 W of output power at 36 GHz with associated gain and efficiency in excess of 7 dB and 35%, respectively.

Keywords: stacked PA; EM design; GaN MMIC; mm-wave PA



Citation: Ramella, C.; Pirola, M.; Florian, C.; Colantonio, P. Space-Compliant Design of a Millimeter-Wave GaN-on-Si Stacked Power Amplifier Cell through Electro-Magnetic and Thermal Simulations. *Electronics* **2021**, *10*, 1784. <https://doi.org/10.3390/electronics10151784>

Academic Editor: Esteban Telo-Cuautle

Received: 25 June 2021
Accepted: 23 July 2021
Published: 26 July 2021

Publisher's Note: MDPI stays neutral with regard to jurisdictional claims in published maps and institutional affiliations.



Copyright: © 2021 by the authors. Licensee MDPI, Basel, Switzerland. This article is an open access article distributed under the terms and conditions of the Creative Commons Attribution (CC BY) license (<https://creativecommons.org/licenses/by/4.0/>).

1. Introduction

Millimeter-wave (mmW) frequencies are becoming a reference frequency range for both terrestrial and space applications [1–5], allowing for improved data rates and more efficient modulation schemes.

Solid-state power amplifiers based on gallium nitride (GaN) monolithic microwave integrated circuit (MMIC) technology have gained great interest as a potential replacement for traveling wave tube amplifiers (TWTAs) in many different space applications. In fact, despite a lower efficiency, they can provide high power densities, in the order of several watts per millimeter [2], at lower cost, lower supply voltage and in a reduced chip area. Moreover, graceful degradation and selectable form factor represent significant benefits for space applications [6]. Hence, developing efficient and compact space-compliant MMIC PAs at Ka-band (26.5–40 GHz) is a hot research target. Long-term reliability is a major requirement of electronic equipment to be deployed on-board satellites, which must therefore be designed as strongly reduced stress with respect to the maximum technology limits. This procedure, known as space derating [7], requires limiting the PA's currents and voltages and keeping the maximum device temperature sensibly lower with respect to terrestrial applications. According to the European Space Agency (ESA) directives, for satellite payloads, the maximum value of 160 °C is considered for GaN devices [8]. This condition must be enforced in the worst case of maximum back-side temperature (T_{BS}),

which is typically as high as 80 °C for satellite applications. Temperature constraints may thus become the most challenging design requirement, especially in the case of GaN-on-Si technologies, due to the poorer thermal properties of the silicon substrate with respect to silicon carbide [9].

At very high frequency, parasitic reactances play a crucial role and finger-to-finger phase misalignments may arise due to the different signal path length. Both must be kept as small as possible to avoid gain degradation, by reducing the size of the individual transistors in the PA. This in turn requires the combination of many devices to achieve a high output power. Classical amplifier topologies rely on parallel power combination, summing up the devices' drain currents. This solution, however, requires a large chip area, thus increasing cost, and reduces the optimum source and load impedances, already typically low at mmW, with a detrimental effect on impedance matching.

An alternative approach is represented by series power combination, summing up devices' drain-source voltages: a solution known as stacked PA [10]. This allows for a higher drain supply voltage, which represents a big advantage in low-breakdown technologies. Moreover, it keeps the input impedance unchanged while increasing that at the output, which is beneficial for matching. Moreover, chip area occupation is sensibly reduced since power combination is embedded in the architecture and does not require big external passive structures. Finally, this architecture increases power gain, which can also be a great benefit in GaN technology at mmW frequencies, where the maximum available gain of single devices is rather low.

In the literature, stacked PAs are largely exploited in CMOS technology [11–18], where the breakdown voltage is a major limit, but some examples can also be found in GaAs [19–27] and very few in GaN [28–31]. A main advantage of the stacked PA is that it can be profitably adopted as a basic high-power and high-gain cell to be further exploited in more complex PA architectures, from classical parallel combined PAs [32] to advanced architectures such as distributed PAs [33], spatially-combined PAs [34] and Doherty PAs [30,35]. In this perspective, the stacked cell is treated as a three-terminal “macro-device” [36]. However, to attain this, a self-bias approach must be pursued, to avoid additional bias lines for the gates of the stacked stages, which would increase the complexity of bias routing when combining more cells.

At very high frequency, designing a stacked PA is made extremely challenging by device parasitics, which cause phase de-tuning among stages and must therefore be properly compensated by means of inter-stage matching networks. The latter must be carefully optimized in order to limit losses, and, for high compactness, their design must strongly rely on extensive electro-magnetic (EM) simulations to avoid overlooking possible detrimental cross-talk effects [37].

This work discusses the design methodology of a space-compliant self-biased Ka-band stacked cell, by reporting two design examples at 36 GHz based on a commercial 100 nm GaN-on-Si technology. These cells, differing for the inter-stage matching strategy, have been developed in the framework of a wider project aiming at the design of narrow-band (<1 GHz), high-power amplifiers at 36 GHz for space applications, adopting the stacked cell as a building block for more complex PA structures. To this aim, layout compactness and ease of integration of the cell, thus a self-bias approach, are considered as further design requirements to be fulfilled. The target output power for the stacked cell is in the order of few watts (≥ 33 dBm). The most relevant steps of the thermal analysis, crucial for space applications, are recalled and the entire design procedure are reported step by step. Due to the high frequency and layout compactness, both cells required extensive EM simulations and the one first introduced in [31] was finally selected, which achieves in simulation, at saturation, 3 W of output power at 36 GHz with associated gain and efficiency in excess of 7 dB and 35%, respectively.

To provide maximum output power, the device must be loaded at the intrinsic drain-source plane by the optimum load R_{opt} that simultaneously maximizes voltage and current swings. By posing $Z_{\text{ds},n} = R_{\text{opt}}$ and $Z_{\text{L},n} = nR_{\text{opt}}$, we obtain

$$C_{\text{g},n} = \frac{C_{\text{gs}}}{(n-1)g_{\text{m}}R_{\text{opt}} - 1} \quad (4)$$

which is the classical design equation of the stacked PA [38]. From (1), we can note that this value of $C_{\text{g},n}$ also provides matching for the real part of $Y_{\text{in},n}$:

$$\Re\{Y_{\text{in},n}\} = \frac{g_{\text{m}}}{A_n} = \frac{1}{(n-1)R_{\text{opt}}} \quad (5)$$

However, we also have a non-zero imaginary part directly proportional to the operating frequency f ; in fact,

$$Y_{\text{in},n} = \frac{1}{(n-1)R_{\text{opt}}} \left(1 + j\omega \frac{C_{\text{gs}}}{g_{\text{m}}} \right) \approx \frac{1}{(n-1)R_{\text{opt}}} \left(1 + j \frac{f}{f_{\text{T}}} \right) \quad (6)$$

where $f_{\text{T}} \approx \frac{g_{\text{m}}}{2\pi C_{\text{gs}}}$ is the device cut-off frequency.

Substituting (6) into (2) gives

$$Z_{\text{ds},n} = Z_{\text{L},n+1} - (n-1)R_{\text{opt}} = R_{\text{opt}} \left(\begin{array}{c} 1 + j \frac{f_{\text{T}}}{f} \\ 1 - n \frac{f_{\text{T}}}{f} \\ 1 + \frac{f_{\text{T}}^2}{f^2} \end{array} \right) \quad (7)$$

meaning that, for the same operating frequency, the mismatch due to C_{gs} depends on n and thus is increasingly worse moving along the stacked chain. A non-zero imaginary part in the load $Z_{\text{ds},n}$ yields a phase misalignment between current and voltage and limits the maximum current swing thus reducing the maximum achievable power.

At very high frequency, the device output capacitance also becomes significant, asking for inductive compensation [22], and *waveform de-phasing* across stages is experienced, due to the combined effect of parasitics and phase rotation along interconnection lines. Therefore, an additional inter-stage matching network (ISMN) becomes mandatory, to provide impedance matching, recover phase misalignments and achieve proper operation of the stacked devices.

For ISMN design, two different approaches are possible: a *theoretical* approach, where the analysis of the structure is carried out considering parasitics in order to find adequate design guidelines or formulas, as in [11,22,27], or a *load-pull* approach, where the (complex) optimum extrinsic load Z_{opt} , gathered from load-pull simulations or measurements, is adopted for the design. In the theoretical approach, the values of the device parasitics must be known, extracted either from simulations or measurements [39], and some simplifying assumptions are usually made, neglecting some parasitics (e.g., inductive parasitics) and, above all, their non-linear behavior with input power (non-linear capacitances). The latter makes this approach approximated, thus requiring post-optimization based on device non-linear models. On the contrary, the simulated load-pull approach fully exploits the non-linear device models, implicitly taking into account both linear parasitics and non-linear effects, with a level of accuracy that depends only on the model itself. Since accounting for parasitic effects is complex at very high frequency, in this work, the load-pull approach is followed.

Gate Power Leakage and Maximum N

The presence of the gate capacitances $C_{g,n}$ implies that part of the output signal of the preceding stage is drawn toward the gate of the subsequent one in order to drive it, as depicted in Figure 1. This phenomenon is often referred to as *gate leakage* or *gate power leakage* to highlight that it is responsible for sub-optimum power combination in the basic stacked PA [10].

Moreover, as demonstrated in [40], the need of a gate current to drive each CG stage makes the maximum number of transistors that can be stacked limited by the technology cut-off frequency, f_T . In fact, given that $i_{d,n} = i_{s,n} - i_{g,n}$, the current gain of the n th CG stage is

$$\beta_{CG,n} = \frac{|i_{d,n}|}{|i_{s,n}|} = \frac{1}{1 + \frac{|i_{g,n}|}{|i_{d,n}|}} = \frac{1}{1 + \frac{1}{\beta_{CS}}} = \frac{f_T}{f_T + f} \quad (8)$$

since

$$\beta_{CS} = \frac{|i_{d,1}|}{|i_{g,1}|} = \frac{g_m V_{gs}}{2\pi f C_{gs} V_{gs}} = \frac{f_T}{f} \quad (9)$$

Thus, each CG added to the stack introduces a loss in the total current gain and hence in the achievable output power

$$P_{out} = N V_{DS,1} \cdot \beta_{CG,n}^{(N-1)} I_{D,1} = N \beta_{CG,n}^{(N-1)} P_{out,CS} \quad (10)$$

At a specific operating frequency f , the maximum number of devices that can be stacked is obtained from (10) as [40]

$$N_{max} = \left\lfloor \frac{1}{\ln\left(1 + \frac{f}{f_T}\right)} \right\rfloor \quad (11)$$

where $\lfloor \cdot \rfloor$ stands for rounding toward the lowest integer.

3. Technology

The technology selected for the project is the D01GH process from OMMIC: a 100 nm gate-length GaN-on-Si HEMT process with which different designs at the target frequencies have been successfully demonstrated in literature [2,4,5,41]. At European level and among commercial processes, this one features the shortest gate-length even if, for space applications, working with a Si substrate, rather than SiC, may represent an issue. Compared to SiC, Si shows a much lower thermal conductivity, almost three times lower in the 0–100 °C range [9], but it is cheaper and might allow, in the future, for the integration of GaN-based RF and Si-based digital sub-systems onto a unique chip.

The main features of the selected process are summarized in Table 1. The quiescent drain-source voltage is reduced to 11.25 V. This choice guarantees that for a Class AB PA design the intrinsic dynamic load lines of the devices reach a peak drain-source voltage well below the maximum derated value (75% of the technology breakdown voltage). This reduces the output power density to 2.5 W/mm. Nevertheless, the most stringent limiting factor on achievable output power is represented by the maximum junction temperature of 160 °C, 40 °C below the maximum value indicated for reliable terrestrial applications.

Table 1. Features of the OMMIC D01GH GaN-on-Si process.

Feature	Value
Cut-off frequency f_t	>90 GHz *
Saturation current I_{DSS}	>850 mA/mm *
Threshold voltage V_{TH}	-2 V *
Output power P_{out}	>2.9 W/mm *
Junction temperature T_j	200 °C *
Breakdown voltage V_{BD}	>50 V ◊
Quiescent V_{DS}	15 V ◊

* simulated; ◊ from manual.

3.1. Device Thermal Model

As the junction temperature is so critical for the present design, a reliable thermal model must be adopted to account for it. For design optimization, the model should be not only accurate, but also rather simple to enable fast simulation. A 3D thermal stack for finite-element (FEM) thermal simulation is given by the foundry. However, simulation times are incompatible with design optimization, thus 3D thermal simulations are used only to accurately assess the effective temperature of the final cell. During the design, instead, the junction temperature is kept under control by means of a simplified 1D heat-flow model.

The latter adopts a reference thermal resistance $R_{th,REF}$, which is computed only once for a reference temperature value T_{REF} , and is then used in the calculation of the junction temperature as [42]

$$T_j = T_{BS} e^{\frac{R_{th,REF} P_{diss}}{T_{REF}}} \quad (12)$$

where temperatures are expressed in Kelvin, T_{BS} is the back-side temperature and P_{diss} is the power dissipated in the transistor's channel. With respect to the classical definition of thermal resistance ($R_{th} = (T_j - T_{BS}) / P_{diss}$), $R_{th,REF}$ has the advantage that it can be considered approximately constant versus both T_{BS} and T_j as shown in Figure 3, while the thermal resistance nonlinear dependency on temperature is accounted for by the exponential function. In particular, for this process, $R_{th,REF} = 29 \text{ }^\circ\text{C}/(\text{W}\cdot\text{mm})$ at $T_{REF} = 20 \text{ }^\circ\text{C}$, that, as can be seen in Figure 3, represents a worst-case value. By reversing (12), assuming the maximum $T_j = 160 \text{ }^\circ\text{C}$ and $T_{BS} = 80 \text{ }^\circ\text{C}$, we obtain a maximum dissipated power density below 2.1 W/mm. For a SiC substrate, the value of $R_{th,REF}$ in this model would have been below $17 \text{ }^\circ\text{C}/(\text{W}\cdot\text{mm})$, hence the maximum allowed dissipated power density within the space derating limits would have been around 3.5 W/mm.

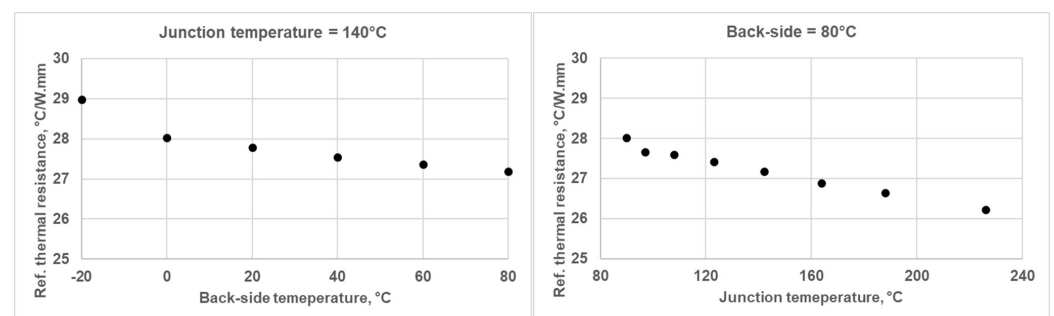


Figure 3. $R_{th,REF}$ extraction from 3D thermal simulations as a function of back-side temperature and junction temperature.

4. Preliminary Design

With a cut-off frequency of 90 GHz, according to (11), only two devices can be stacked at 36 GHz. Thus, the cell is composed of just one CS stage and one CG stage, and its drain bias voltage and optimum output termination (under the assumption of ideal series combination) are two times higher than that of the CS alone.

4.1. Device Analysis

At Ka-band, the number of fingers of a transistor and their width need to be reasonably low to keep parasitic reactances small. Therefore, the largest possible device is the $8 \times 75 \mu\text{m}$ transistor, which has been adopted for the stacked cell.

4.1.1. DC Bias Point Selection

The DC characteristics of the chosen device in CS configuration at $T_{BS} = 80^\circ\text{C}$ are reported in Figure 4: the maximum current for $V_{DS} = 11.25 \text{ V}$ is roughly 600 mA. To achieve high efficiency at saturation together with very low power dissipation at no RF input, the selected bias point is in very deep Class AB. The quiescent current is 15 mA with a corresponding gate-source voltage of -1.75 V .

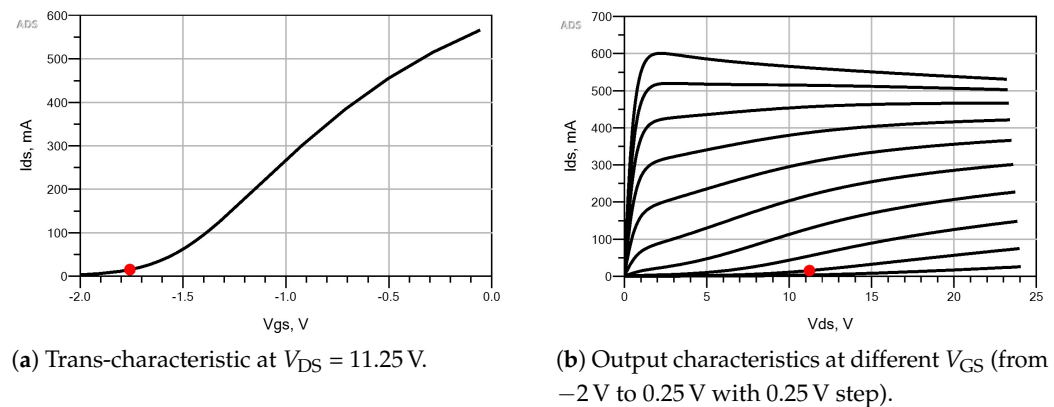


Figure 4. DC characteristics of the $8 \times 75 \mu\text{m}$ device (black) at $T_{BS} = 80^\circ\text{C}$ and selected bias point (red dot).

4.1.2. Small-Signal Analysis

The S-parameter simulation results up to 90 GHz are shown in Figure 5a: the device is unconditionally stable at the frequency of interest and down to 23 GHz. At 36 GHz, the maximum available gain (MAG) in deep Class AB is as low as 4.3 dB, while it is around 7 dB in Class A. Such a low MAG makes the advantage of stacking the devices evident, which can raise gain by around 3 dB.

Out-of-band unconditional stability, especially at low frequency, must be enforced by a proper stabilization network (SN), like that of Figure 5b, ensuring unconditional stability at all frequencies (see Figure 5a) with limited MAG reduction (0.1 dB).

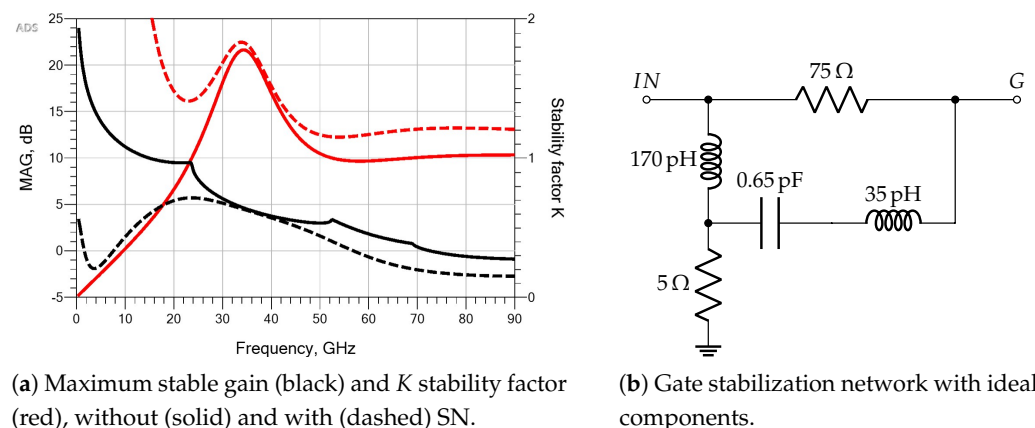


Figure 5. Small-signal stability analysis of the $8 \times 75 \mu\text{m}$ device at $T_{BS} = 80^\circ\text{C}$ and at the selected bias point.

4.1.3. Load-Pull Analysis

Load-pull (LP) simulation results for the $8 \times 75 \mu\text{m}$ device at 36 GHz, at $T_{\text{BS}} = 80^\circ\text{C}$ and at the selected bias point are shown in Figure 6a. Considering the high operating frequency and the stacked architecture, a tuned-load or a harmonic tuning approach is likely unfeasible, thus LP is performed assuming a constant load at all harmonics.

Adopting (12), thermal LP maps can be drawn. The 160°C limit on junction temperature (bold black contour) translates into a region of usable loads, where both output power and gain are lower than maximum. The absolute maximum output power is as high as 36 dBm but the corresponding load would lead to a junction temperature higher than 200°C . As can be noted in Figure 6b, the restrictions posed by thermal constraints on the choice of the optimum load is mainly related to the Si substrate. In fact, for the same dissipated power level, adopting the reference device thermal resistance for a SiC substrate in (12), the region of usable loads would be much more extended.

The optimum load can be found as the intersection of the maximum junction temperature contour with the highest possible output power and gain contours. Efficiency is not shown (to not overburden the plot) as it shows a very smooth variation around the selected load, which is $(55 - j100) \text{ mS}$. The simulation results of the large-signal continuous wave (CW) power sweep with the selected optimum load are reported in Figure 7a. At the maximum PAE of 49%, the output power is 32.2 dBm, while associated gain and junction temperature are 4.5 dB and 155°C , respectively. The load seen at the intrinsic terminals (provided by the foundry model) as a function of the input power is shown in Figure 7b. The selected optimum value is effectively translated into an intrinsic load very close to the theoretical optimum resistance, which is around 37Ω .

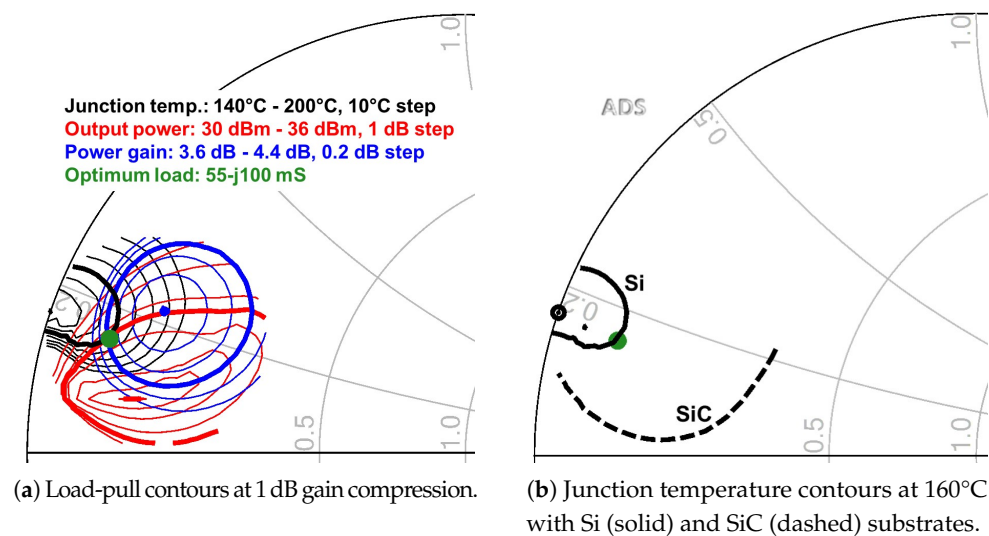
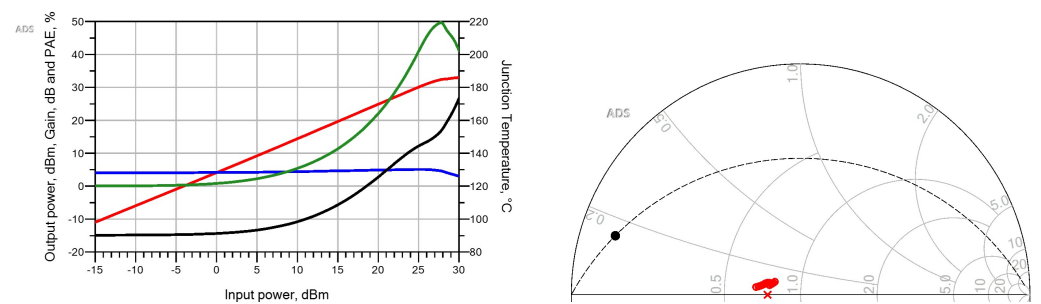


Figure 6. Load-pull simulation results of the $8 \times 75 \mu\text{m}$ device at 36 GHz, with $T_{\text{BS}} = 80^\circ\text{C}$ and at the selected bias point.



(a) CW power sweep performance with the selected optimum load: output power (red), power gain (blue) PAE (green) and junction temperature (black).

(b) Intrinsic (red points) loads compared to optimum (red cross). The extrinsic load (black dot) lays on a constant $Q = 1.8$ curve (black dashed).

Figure 7. Large-signal simulation results of the $8 \times 75 \mu\text{m}$ device at 36 GHz, with $T_{\text{BS}} = 80^\circ\text{C}$ and at the selected bias point.

4.2. Stacked Inter-Stage Matching

At low frequency with respect to the cut-off, the optimum load is purely real and the CG input reactance due to C_{gs} is low, therefore the gate capacitance C_{g} alone can perform inter-stage matching. At high frequencies, instead, Z_{opt} becomes complex, around $(4 + j7.5) \Omega$ in the present case, and thus additional elements are needed.

The most widely adopted ISMNs are shown in Figure 8: series inductance (L_{SERIES}) [10], feedback capacitance (C_{DS}) [38], shunt inductance (L_{SHUNT}) [43] and gate-source inductance (L_{GS}) [22]. Even if other solutions may exist [27], only these four possibilities are considered in this design, since they only require one additional component beyond C_{g} . Note that both devices' loads depend on the external cell's load Z_{L} , which thus represents a further degree of freedom. However, for the sake of simplicity, in this design, we fixed $Z_{\text{L}} = 2Z_{\text{opt}}$, which is the theoretical optimum value when both devices are individually perfectly matched.

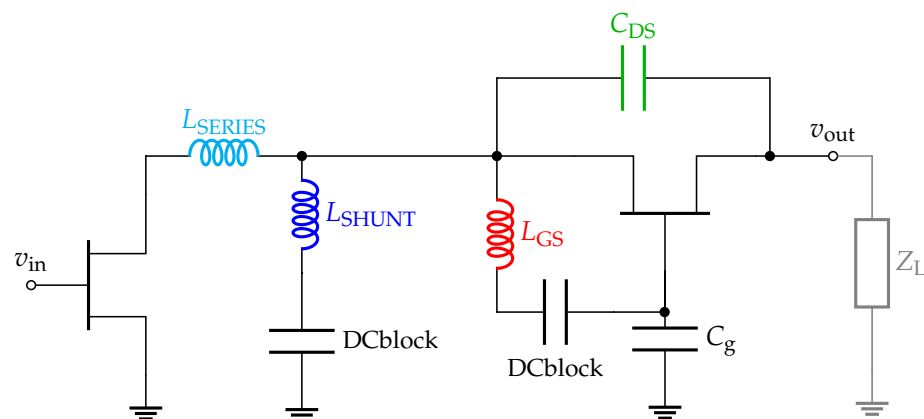


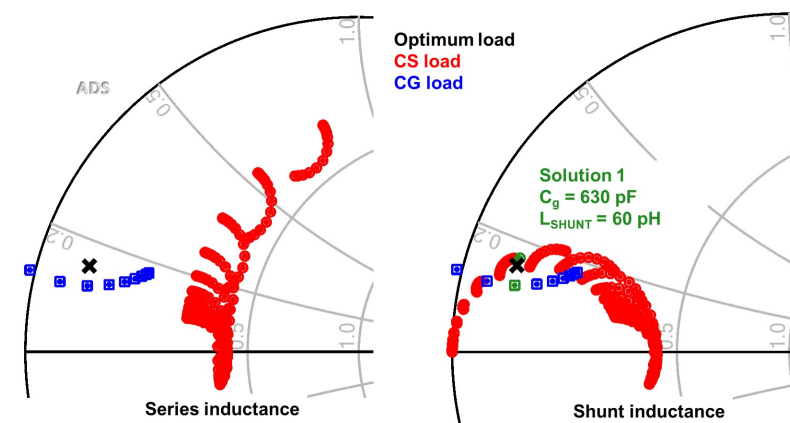
Figure 8. Most widely adopted inter-stage matching networks: series inductance (cyan), shunt inductance (blue), feedback capacitance (green) and gate-source inductance (red).

Following a load-pull-like approach, Figure 9 shows the load seen by the two devices under concurrent sweep (10^{-16} to 10^{-11}) of C_{g} and each of the other matching elements. Figure 9a concerns the L_{SERIES} and L_{SHUNT} solutions, both not affecting the load of the CG stage, which is a function of C_{g} only and for $C_{\text{g}} \approx 630 \text{ pF}$ it is as close as possible to Z_{opt} . The series inductance moves the impedance seen by the CS stage along a constant resistance circle, without finding, in the present case, a good matching.

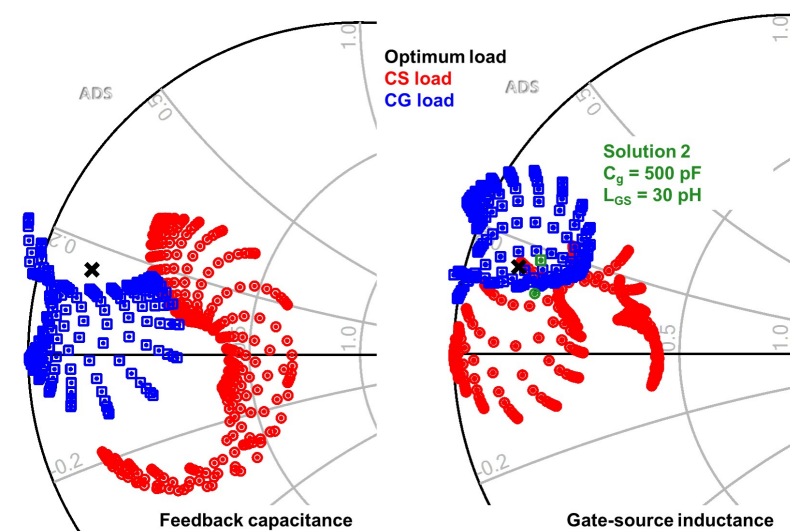
In a dual manner, the shunt inductance acts on the admittance seen by the CS stage, moving it along a constant conductance circle. With $L_{\text{SHUNT}} \approx 60 \text{ pH}$, the best matching is also obtained for the CS stage, as highlighted in Figure 9a (green circle and square).

Figure 9b concerns instead the C_{DS} and L_{GS} solutions, which affect the load of both stages. Thanks to the Miller effect and the positive voltage gain of the CG stage, the feedback capacitance is translated into an equivalent negative capacitance at the input. A main feature of this solution is that it can compensate the gate power leakage [38]. As shown in Figure 10a, if the C_{DS} value is chosen so as to draw a current equal to the gate current of the CG stage, a feedback power flow, equal and opposite to the leakage one, is created and the net CG source and drain currents become equal. In the present case, however, C_{DS} is not a viable solution as it worsens the matching of the CG stage and at the same time cannot match the CS one.

Finally, the gate-source inductance modifies the equivalent value of the intrinsic C_{gs} , being in parallel with it. As shown in Figure 10b, it can also compensate the gate power leakage by creating a controlled power flow P_G toward the gate that provides an output power contribution that sums up in phase with P_S and thus recovers the net power flow from CS drain to CG source. For the present case, the gate-source inductance represents a second possible solution. In particular, with $C_g \approx 500$ pF and $L_{GS} \approx 30$ pH, the best matching is achieved, as highlighted in Figure 9b (green circle and square).



(a) L_{SERIES} and L_{SHUNT} solutions.



(b) C_{DS} and L_{GS} solutions.

Figure 9. Load of CS (red circles) and CG (blue squares) stages as a function of ISMN components compared to Z_{opt} (black cross).

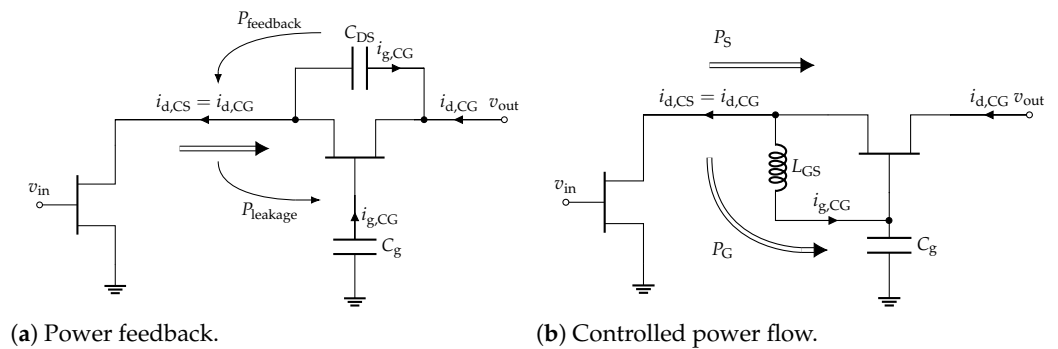
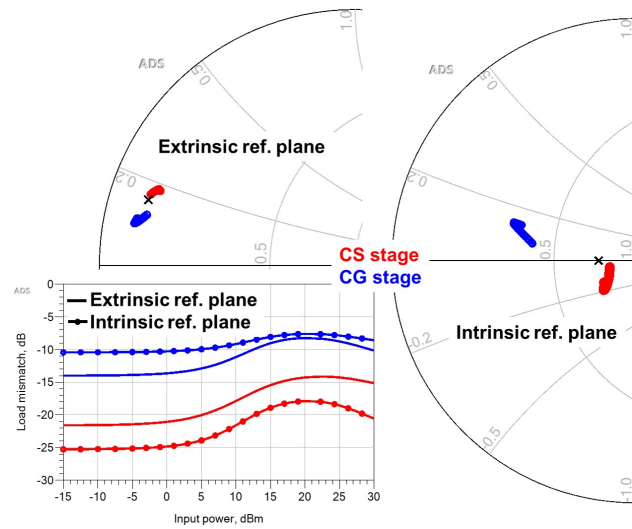
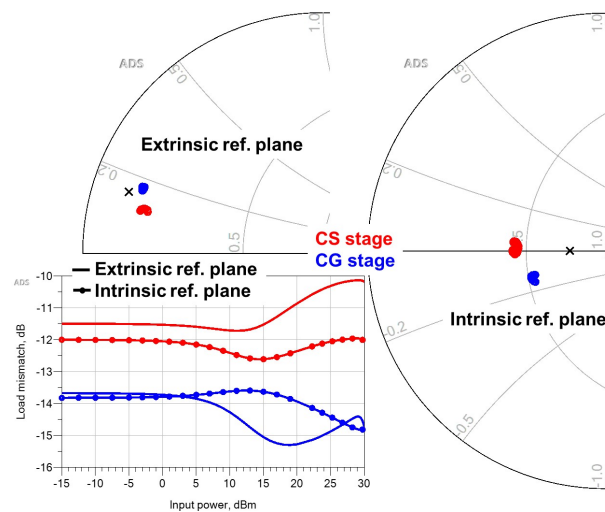


Figure 10. Gate power leakage compensation.

Finally, Figure 11 shows the extrinsic and intrinsic loads seen by the two stages as a function of input power for the two identified solutions. At the intrinsic level, the L_{SHUNT} solution achieves a very good match for the CS stage (better than 18 dB) while still keeping acceptable match (better than 8 dB) for the CG stage. For the L_{GS} solution, instead, both stages are fairly well matched (better than 11 dB).



(a) L_{SHUNT} solution.



(b) L_{GS} solution.

Figure 11. Load of CS (red) and CG (blue) stages as a function of input power.

4.3. Layout Considerations

The most compact layout is that proposed in [24,43], where the drain of the CS stage is directly connected to the source of the CG one through air bridges. However, this solution presents two main drawbacks. First, it changes the original device layout, eliminating the drain (CS) and gate (CG) pads. However, the role of these pads is not negligible at 36 GHz, and cutting them out will worsen the accuracy of the device models. Secondly, air bridges are more lossy than micro-strip lines, can conduct only limited power, which can be an issue dealing with typical power levels of GaN, and may introduce cross-talk between the overlapping lines at the design frequency. We therefore chose to not modify the original device layout.

The active device model comes with two symmetrical source terminals, thus it is expected to be maximally accurate when used in a symmetrical layout. For the CS stage this means that via holes must be placed on both sides of the transistor, while for the CG stage this implies implementing a double-side access to the source terminals, with a C-shaped interconnection (fork). As shown in Figure 12, the ISMN elements can then be placed either outside or inside the fork. The first option ensures maximum cell compactness in the x-direction, but requires air bridges and ISMN splitting into two parallel networks placed at both sides of the cell to preserve symmetry, thus increasing the cell dimension along the y-direction. This architecture was selected for the L_{SHUNT} solution, since in this case the power flowing toward the gate is expected to be small and thus sustainable by air bridges. For the L_{CS} solution, instead, air bridges should be avoided, due to the non-negligible amount of power directed toward the gate. The second option was therefore adopted, yielding a cell more compact in the y-direction but larger in the x-direction. This implies the use of much longer interconnection lines, which can introduce a phase delay difficult, or even impossible, to be recovered with matching elements. On the other hand, it increases the distance between the transistors, and includes a via-hole in between, thus enhancing electro-magnetic and thermal decoupling.

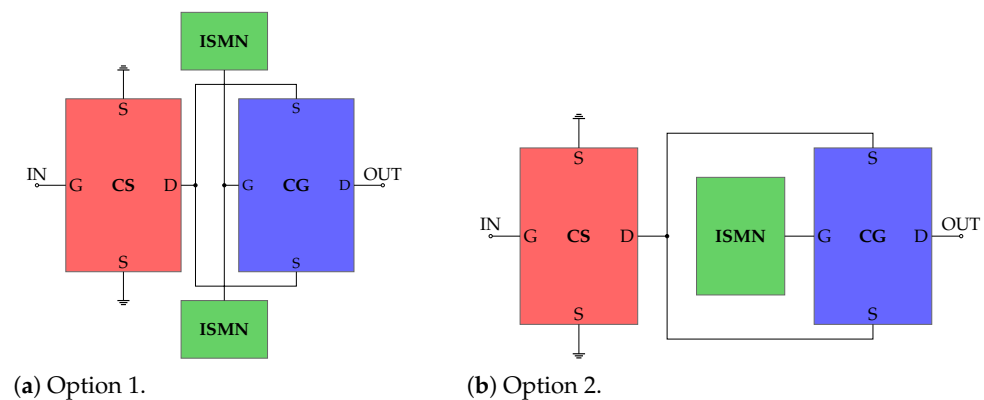


Figure 12. Possible symmetrical cell layouts.

4.4. Self-Bias Network

Adopting a dedicated bias line for the CG gate voltage gives higher flexibility, and is often preferred when only one or two cells are adopted. However, for a PA exploiting more cells, the routing of these additional lines may become unsustainable and a self-bias approach should be preferred, where the gate-source voltage of the CG stage is derived by means of a resistive voltage divider from either the $V_{D,CG} = 22.5$ V or $V_{D,CS} = V_{S,CG} = 11.25$ V. Looking at Figure 12, it is clear that the second option is much easier to be accommodated in the layout, and thus was selected, as shown in Figure 13.

To draw the same current of the CS stage, the CG stage must be biased at a voltage

$$V_{G,CG} = V_{GS,CG} + V_{DS,CS} = V_{GS,CS} + V_{DS,CS} \quad (13)$$

In this design gate and drain voltages of the CS are -1.75 and 11.25 V, respectively, thus giving $V_{G,CG} = 9.5$ V. Nevertheless, the assumption of equal drain-source DC voltages is valid only with no input power, or in small-signal conditions [12,27]. On the contrary, when the transistors are driven into compression, the DC components of the drain-source currents and consequently of the floating voltage $V_{D,CS} = V_{S,CG}$ change. As shown in Figure 14a, this yields to early breakdown and early compression for the CS and CG stage, respectively. Since in a PA the cell works in non-linear regime, it is better to optimize the quiescent $V_{G,CG}$ for equal V_{DS} close to saturation. Adopting a CG gate voltage lower than the nominal value unbalances the drain-source voltages in small-signal conditions, but makes them equal at the maximum output power, as shown in Figure 14b.

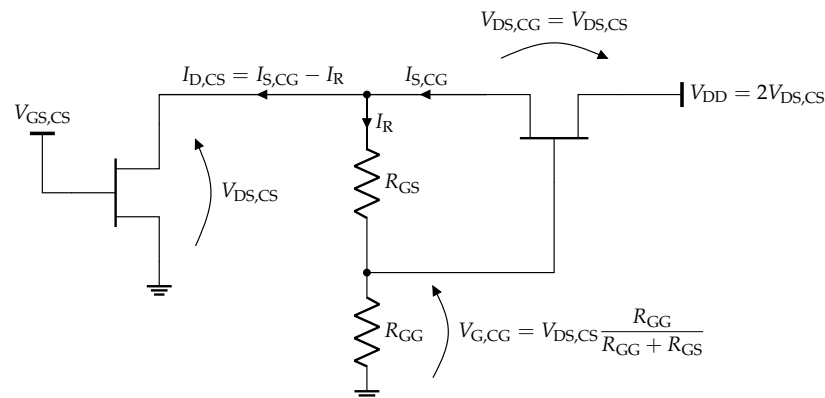
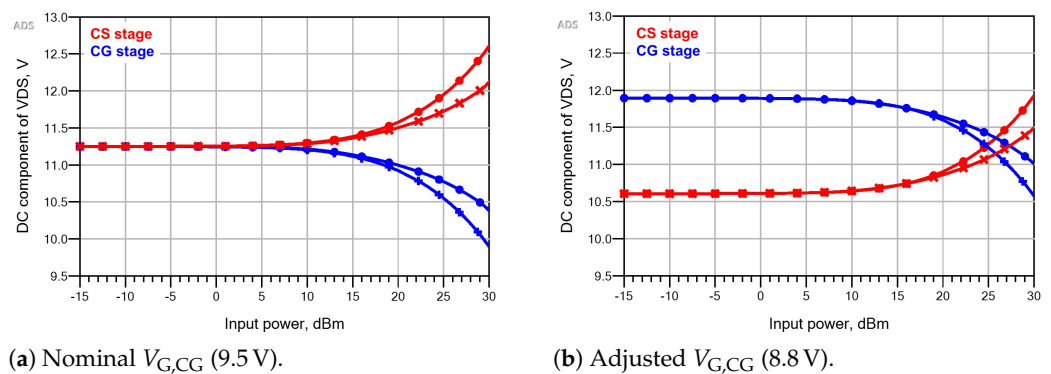


Figure 13. Adopted self-bias network (stacked cell in DC operation).



(a) Nominal $V_{G,CG}$ (9.5 V).

(b) Adjusted $V_{G,CG}$ (8.8 V).

Figure 14. DC drain-source voltages of the CS (red) and CG (blue) stage as a function of input power for both L_{SHUNT} -based (circles) and L_{GS} -based (crosses) solutions.

5. Circuit-Level (CL) Design

Figure 15 reports the circuit schematics of the two designed cells. All passive elements, except the gate capacitance of the L_{GS} solution, are split into parallel pairs. Since via-holes are the most space-consuming components in a MMIC design, in both cells, all grounded elements share a common via-hole.

The selected technology provides metal-insulator-metal (MIM) capacitors with two different capacitance densities, namely 400 and 50 pF/mm². Considering also the size limits posed by the cell layout, the maximum achievable capacitance is limited to 1 pF, which cannot be considered an ideal short at the operating frequency, hence impacting on matching, as shown in Figure 16a, and requiring re-optimization.

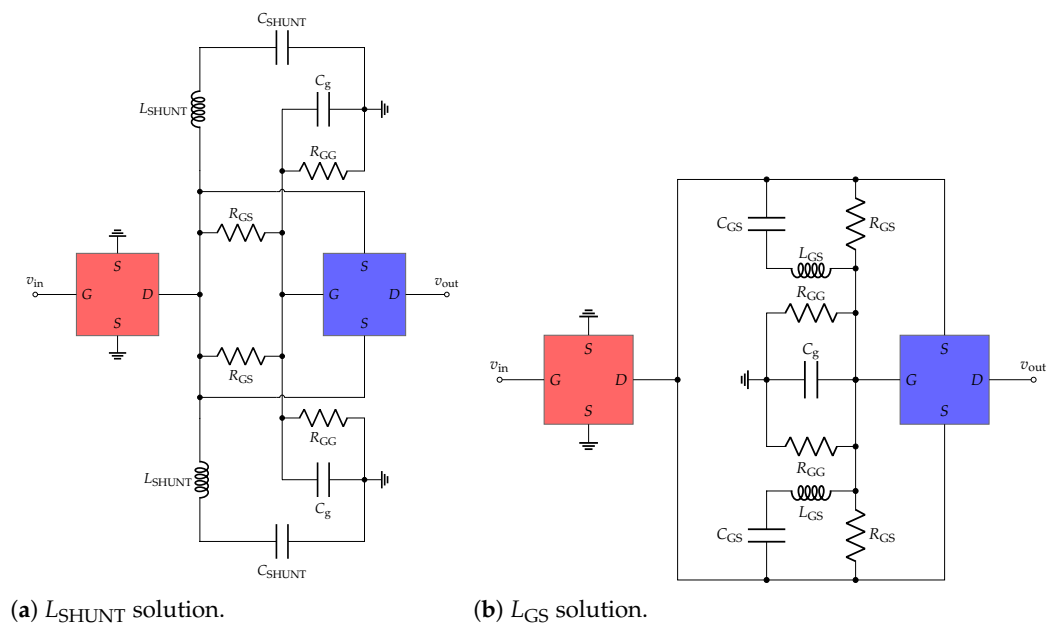


Figure 15. Layout-like schematics of the cells (transmission lines not shown).

As illustrated in Figure 16b, when distributed elements are used, not only their phase delay impacts on the loads seen by the devices, but also the choice of the connection point for the matching elements. Figure 16 concerns the L_{GS} solution, but very similar considerations apply for the L_{SHUNT} one.

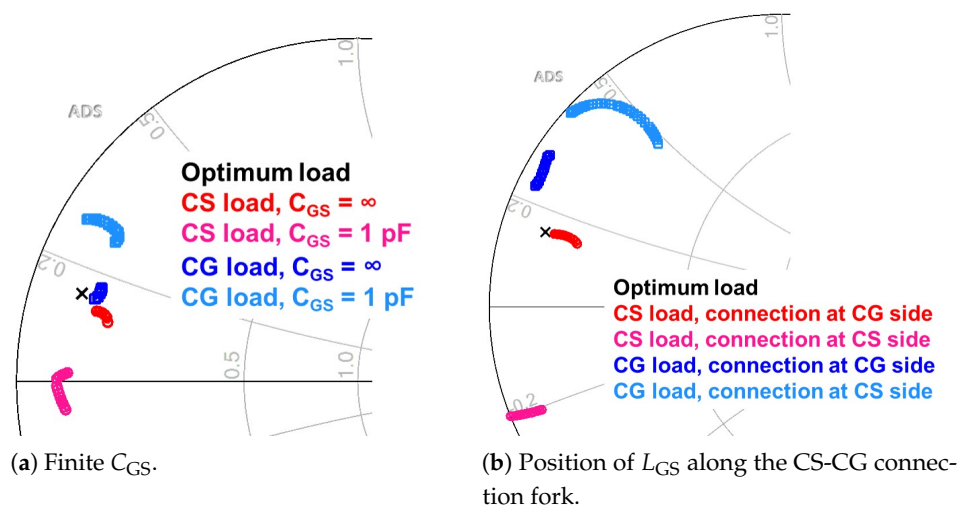


Figure 16. Effect of on matching of CL non-idealities.

The gate capacitances are implemented with lumped, low-capacitance-density MIM capacitors. The two shunt inductances are replaced by equivalent transmission lines, while squared spiral inductors are used for the gate-source inductances. Finally, self-bias resistances are replaced with GaN resistors ($\sim 400 \Omega/\square$). The value of the final optimized components is reported in Table 2.

Table 2. Circuit level component values of the designed stacked cells.

Component	Value L_{SHUNT} Solution	Value L_{GS} Solution
C_g	165 fF (MIM)	175 fF (MIM)
L_{SHUNT}/L_{GS}	92.5 pH (transmission lines)	170 pH (spiral inductors)
C_{SHUNT}/C_{GS}	0.9 pF (MIM)	0.8 pF (MIM)
R_{GS}	1140 Ω	1320 Ω
R_{GG}	4400 Ω	6500 Ω

Both cells achieve, at 36 GHz, more than 3 W of output power with saturated power gain and efficiencies above 7.2 dB and 40%, respectively, as shown in Figure 17a. The achieved DC voltage distribution is also very good, as shown in Figure 17b.

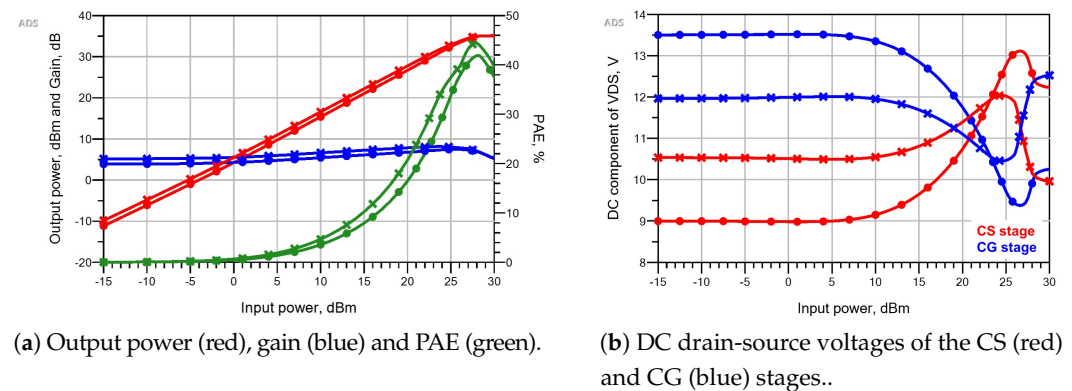


Figure 17. Optimized circuit-level performance of the L_{SHUNT} -based (circles) and L_{GS} -based (crosses) cells at 36 GHz.

6. Electro-Magnetic (EM) Design

In Figure 18, the final layouts of the two cells are reported. To achieve cell compactness, elements are very close to each other, thus extensive EM optimization is required to account for EM coupling effects.

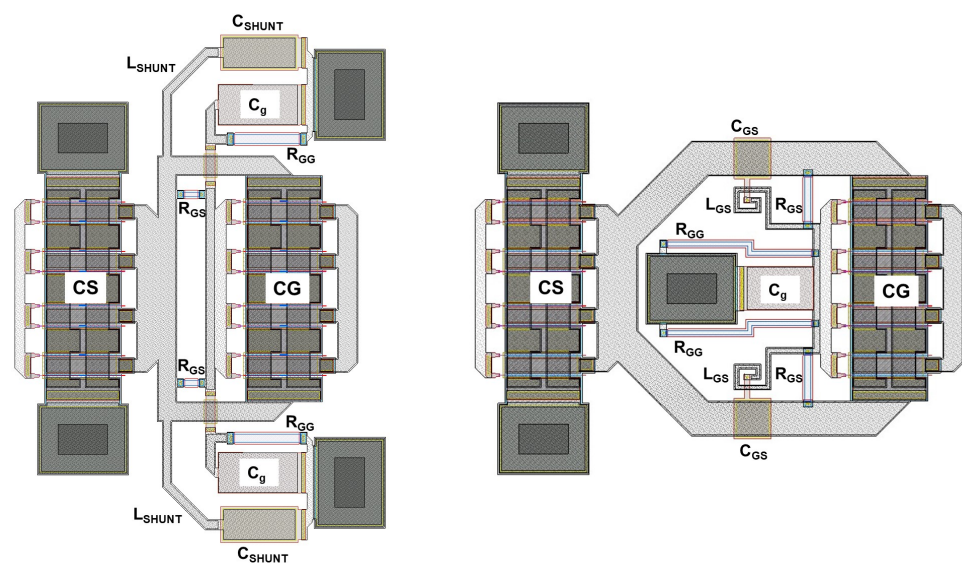


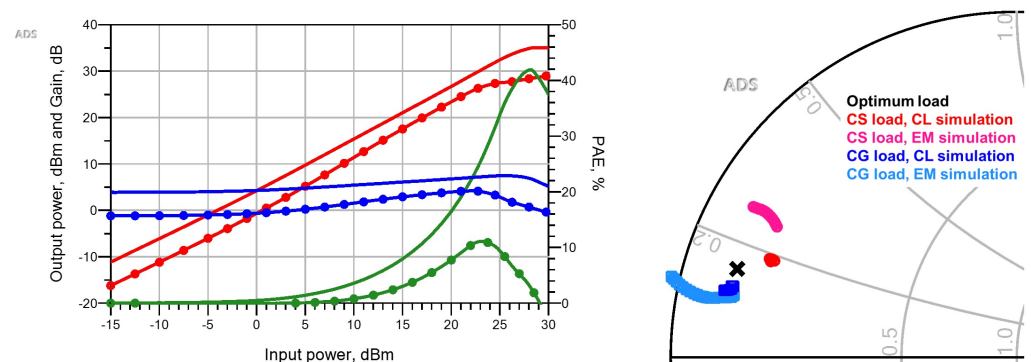
Figure 18. Layout of the two designed cells.

6.1. EM Simulation Results for the Shunt-Inductance-Based Cell

Figure 19 shows the simulated results of the L_{SHUNT} -based cell. The ISMN proved not to be able to provide the device matching required and therefore the achieved performance

was sensibly lower than the CL predictions in terms of output power (below 1 W), gain (even below 0 dB in small-signal) and PAE (below 10%). As discussed in [37], these results can be ascribed to actual cross-talk in the ISMN structure, as detailed in Figure 20 reporting the EM-simulated RF current density distribution. The air-bridge crossing, the proximity of C_g and C_{SHUNT} capacitances and via sharing among them, result in creating an undesired path between the gate and the source of the CG stage (highlighted with dashed circles). In particular, even if this is not the actual operating condition of the cell, if we observe the current distribution obtained when injecting power from the gate of the CG device (right plot), rather big cross-talk currents are found to flow in L_{SHUNT} , which should be instead isolated from the gate of the CG stage (see Figure 15a).

The gate-source cross-talk proved to be almost unavoidable in a compact cell. Thus, even if possible improvements may have been achieved, the L_{SHUNT} -based cell was discarded in favor of the L_{GS} -based one, where the gate-source coupling is part of the ISMN itself and thus it can be carefully EM-designed.



(a) CL (no symbols) and EM (circles) simulated cell performance at 36 GHz: output power (red), gain (blue) and PAE (green).

(b) Load of CS (red circles) and CG (blue squares) stages as a function of P_{in} .

Figure 19. Comparison between CL and EM simulations for the L_{SHUNT} cell.

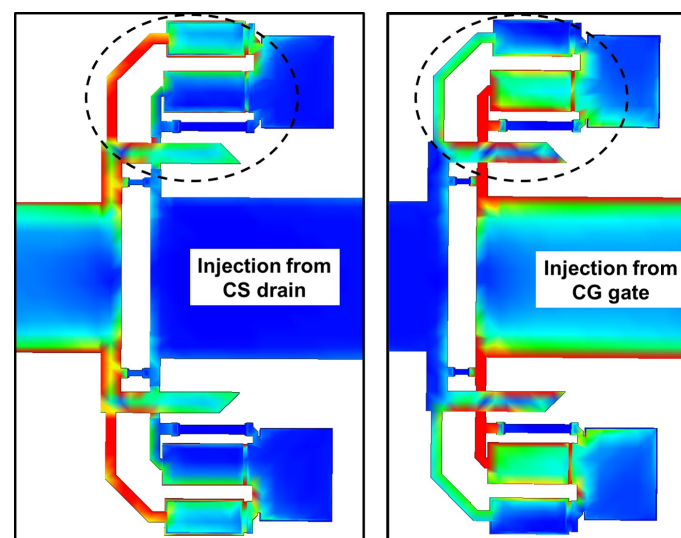
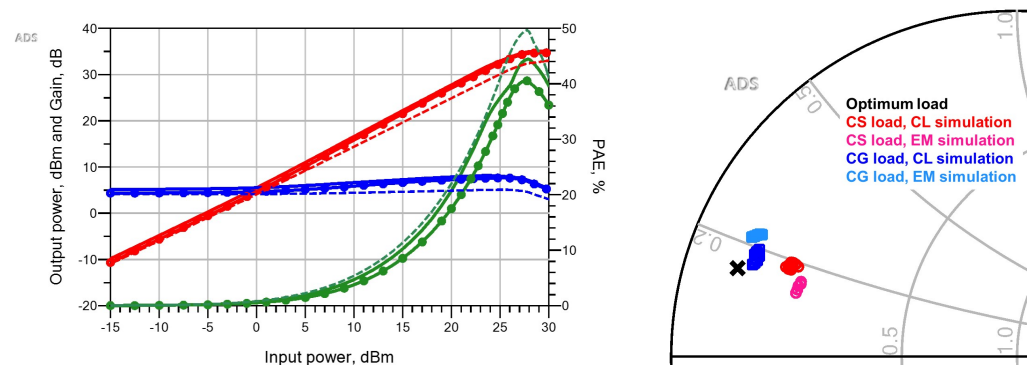


Figure 20. EM-simulated current densities in the L_{SHUNT} cell. Blue to red means lowest to highest current density.

6.2. EM Simulation Results for the Gate-Source-Inductance-Based Cell

Figure 21 shows the results obtained after EM optimization of the L_{GS} -based cell. The EM-simulated performance is very close to the circuit-level one. Saturated output power is around 3 W in moderate compression, with an associated gain in excess of 7 dB. The

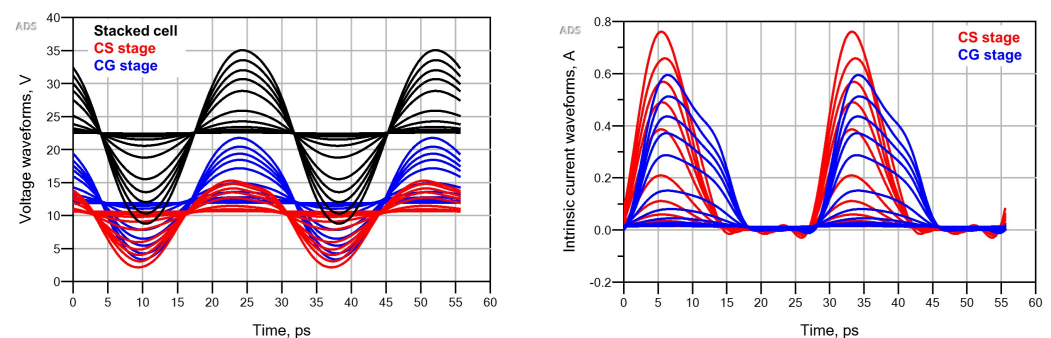
maximum PAE is around 40%, only a few percentage points below CL predictions. Compared to the CS stage alone, there is clearly a gain/power enhancement while PAE remains reasonably high. The actual loads seen by the devices are close to the optimum value, and the obtained voltage and current waveforms, as shown in Figure 22 for all swept power levels, are rather good, in terms of both phase alignment and magnitude equalization.



(a) CL (no symbols) and EM (circles) simulated cell performance at 36 GHz: output power (red), gain (blue) and PAE (green). Dashed lines are the results of Figure 7a.

(b) Load of CS (red circles) and CG (blue squares) stages as a function of P_{in} .

Figure 21. Comparison between CL and EM simulations for the L_{GS} cell.



(a) Drain-source voltages.

(b) Intrinsic drain currents.

Figure 22. EM-simulated time-domain waveforms of the L_{GS} cell.

Figure 23 shows how the CS output power is split almost equally between the source and gate of the CG stage through the two L_{GS} inductors, which carry the highest RF currents densities.

Figure 24a confirms the gain boost effect of device stacking: the gain of the CS alone is below 5 dB, in line with Figure 7a, while the CG contribution is between 2 and 3 dB, so that the total gain is raised up to a maximum of 7.6 dB. The ISMN losses are bounded between 0.5 and 0.6 dB. Due to the very deep Class AB bias point selected, the power gain expands more than 3 dB when increasing the input power.

Finally, Figure 24b shows the DC drain-source voltages obtained at EM level, compared to the CL results, demonstrating that proper voltage distribution is maintained.

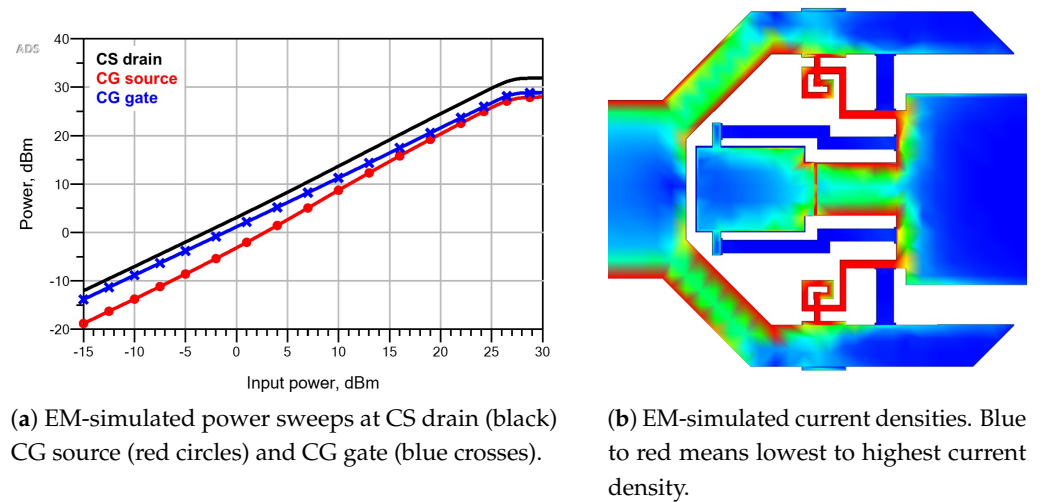


Figure 23. Power split between gate and source in the L_{GS} cell.

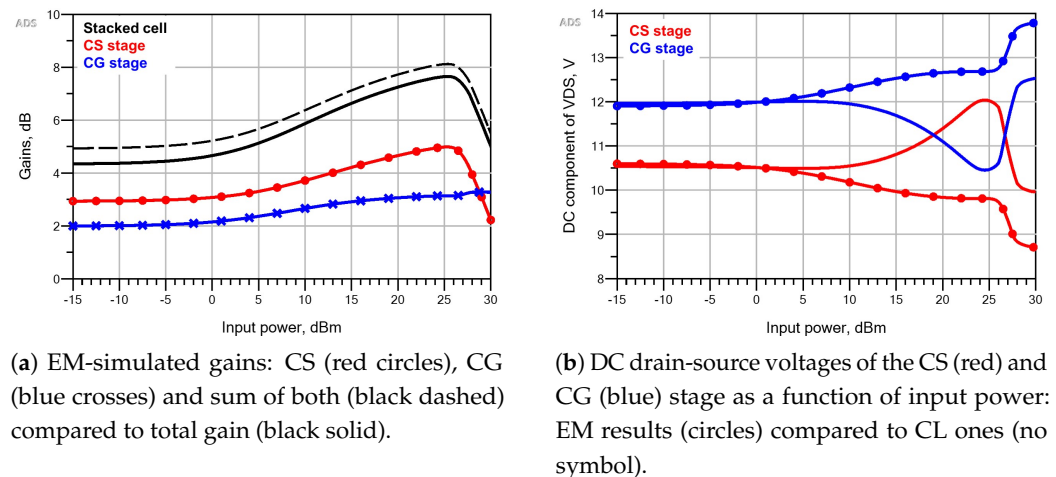


Figure 24. EM simulation results of the L_{GS} solution.

7. Stability, Linearity and Thermal Assessment

To conclude cell assessment, this section reports the stability, linearity and thermal analyses on the EM-based L_{GS} -based solution.

7.1. Stability Analysis

The cell small-signal stability can be investigated by means of the classical Rollett's stability factor K , since, as opposite to parallel combination, series combination does not create any even/odd-mode internal loop impairing stability. As shown in Figure 25, the cell is unconditionally stable from 5 GHz to more than 45 GHz, where gain falls below 0 dB. At low frequency, unconditional stability can be achieved with the same SN adopted for the CS device alone (Figure 5b) with negligible gain reduction at 36 GHz.

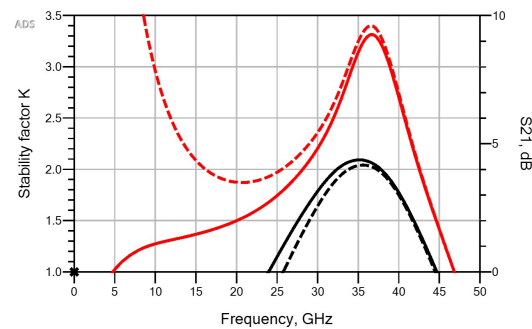


Figure 25. Stability factor K (red) and S_{21} (black) of the cell without (solid) and with (dashed) the SN of Figure 5b.

7.2. Linearity Analysis

The cell has not been optimized for linearity. However, it is interesting to assess the final linearity performance achieved. In narrow-band design, the AM/AM and AM/PM curves are the most significant figures of merit. The results on the EM-optimized cell are reported in Figure 26. The maximum AM/AM (Figure 26a) is 3.5 dB, due to the sensible gain expansion expected from the selected bias point, very close to pinch-off. However, as highlighted in Figure 26c, close to saturation the gain variation is within 0.4 dB.

AM/PM conversion (Figure 26b) is dominated by the CS stage, being the phase distortion introduced by the CG stage almost totally compensated by the ISMN. The maximum value is around 8° , which is a reasonable value, while close to saturation the range of phase variation is about 4° (Figure 26c).

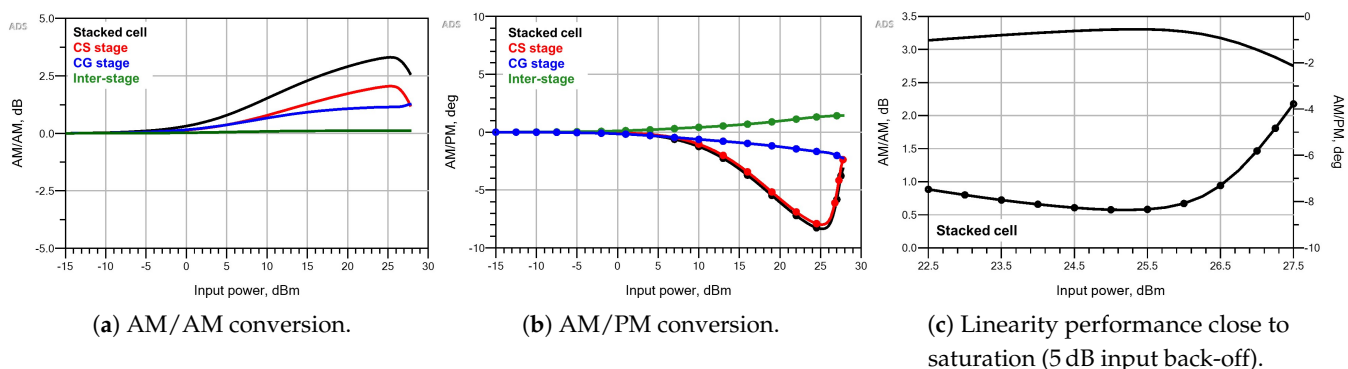
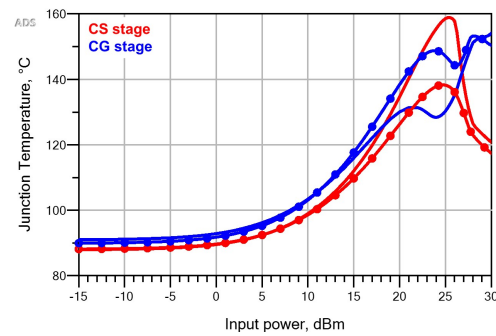


Figure 26. AM/AM (no symbols) and AM/PM (circles) simulations at 36 GHz of the L_{GS} -based cell and its sub-stages.

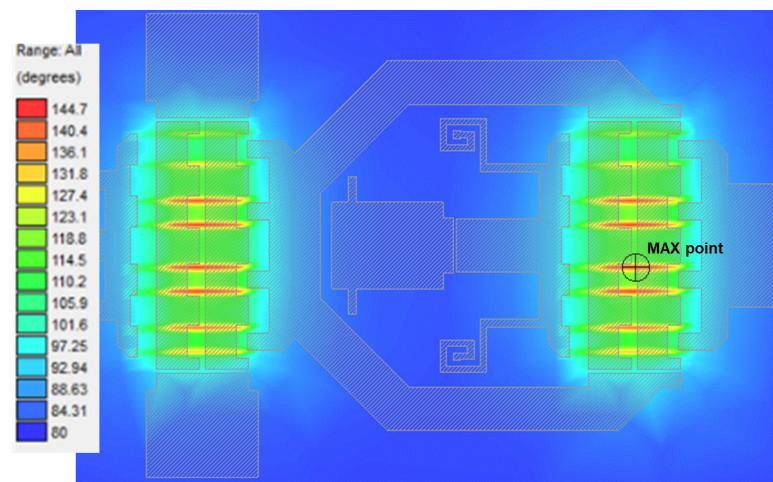
7.3. Thermal Analysis

As anticipated in Section 3.1, junction temperature is kept under control during the design phase by means of a simplified model starting from the simulated CW dissipated power. As demonstrated in Figure 27a, after EM optimization, it remains below 160°C for all input power levels.

Finally, 3D-FEM thermal simulation results of the entire cell, at isothermal 80°C MMIC back-side temperature, are shown in Figure 27b. The highest temperature is 144°C , well below the maximum limit for space applications, and it is recorded at the inmost gate fingers of the CG device. As can be noted, the two devices undergo similar thermal stress and cross-heating is very small thanks to the heat-sink effect of the via hole in between, which lowers the temperature down to a minimum of 84.3°C .



(a) CW simulations.



(b) 3D thermal map.

Figure 27. Thermal simulations of the L_{CS} cell.

8. Conclusions

In this contribution, the design of a stacked cell in GaN-on-Si technology for Ka-band space applications is detailed. Starting from the basic concepts, the limiting factors of the stacked configuration when pursued for a high frequency operating range are discussed together with the constraints imposed by thermal reliability. The designs of two stacked cells are presented and compared, highlighting the impact of electro-magnetic and thermal cross-talk effects.

Author Contributions: Conceptualization, review and editing, all authors; original draft preparation, C.R.; investigation and formal analysis, C.R. and M.P.; supervision, C.F. and P.C.; project administration, P.C. All authors have read and agreed to the published version of the manuscript.

Funding: This research was funded by ESA within the project *Ka-band HPA MMIC for CS2-FO* under the Earth Observation Envelope Programme EOEP-5 Block 1.

Acknowledgments: Iain Davies from ESA-ESTEC is warmly acknowledged for the useful discussion.

Conflicts of Interest: The authors declare no conflict of interest.

References

- Chen, S.; Nayak, S.; Campbell, C.; Reese, E. High Efficiency 5 W/10 W 32–38 GHz Power Amplifier MMICs Utilizing Advanced 0.15 μm GaN HEMT Technology. In Proceedings of the 2016 IEEE Compound Semiconductor Integrated Circuit Symposium (CSICS), Austin, TX, USA, 23–26 October 2016; pp. 1–4. [\[CrossRef\]](#)
- Moron, J.; Leblanc, R.; Lecourt, F.; Frijlink, P. 12 W, 30% PAE, 40 GHz power amplifier MMIC using a commercially available GaN/Si process. In Proceedings of the 2018 IEEE/MTT-S International Microwave Symposium-IMS, Philadelphia, PA, USA, 10–15 June 2018; pp. 1457–1460. [\[CrossRef\]](#)

3. Estella, N.; Camargo, E.; Schellenberg, J.; Bui, L. High-Efficiency, Ka-band GaN Power Amplifiers. In Proceedings of the 2019 IEEE MTT-S International Microwave Symposium (IMS), Boston, MA, USA, 2–7 June 2019; pp. 568–571. [[CrossRef](#)]
4. Cidronali, A.; Passafiume, M.; Colantonio, P.; Collodi, G.; Florian, C.; Leuzzi, G.; Pirola, M.; Ramella, C.; Santarelli, A.; Traverso, P. System Level Analysis of Millimetre-wave GaN-based MIMO Radar for Detection of Micro Unmanned Aerial Vehicles. In Proceedings of the 2019 Photonics & Electromagnetics Research Symposium-Spring (PIERS-Spring), Rome, Italy, 17–20 June 2019; pp. 438–450. [[CrossRef](#)]
5. Ramella, C.; Florian, C.; Cipriani, E.; Pirola, M.; Giannini, F.; Colantonio, P. Ka-band 4 W GaN/Si MMIC power amplifier for CW radar applications. In Proceedings of the 2020 15th European Microwave Integrated Circuits Conference (EuMIC), Utrecht, The Netherlands, 10–15 January 2021; pp. 33–36. [[CrossRef](#)]
6. Colantonio, P.; Giannini, F.; Limiti, E. *High Efficiency RF and Microwave Solid State Power Amplifiers*; Microwave and Optical Engineering; Wiley: New York, NY, USA, 2009.
7. European Cooperation for Space Standardization. *ECSS-Q-ST-30-11C Rev 1—Space Product Assurance—Derating EEE Components*; European Cooperation for Space Standardization: Noordwijk, The Netherlands, 2011.
8. European Space Agency. *GaN Reliability Enhancement and Technology Transfer Initiative (GREAT2)*; European Space Agency/European Space Technology and Research Centre: Noordwijk, The Netherlands, 2008
9. Ramella, C.; Pirola, M.; Reale, A.; Ramundo, M.; Colantonio, P.; Maur, M.A.D.; Camarchia, V.; Piacibello, A.; Giofrè, R. Thermal-aware GaN/Si MMIC design for space applications. In Proceedings of the 2019 IEEE International Conference on Microwaves, Antennas, Communications and Electronic Systems (COMCAS), Tel-Aviv, Israel, 4–6 November 2019; pp. 1–6.
10. Shifrin, M.; Ayasli, Y.; Katzin, P. A new power amplifier topology with series biasing and power combining of transistors. In Proceedings of the IEEE 1992 Microwave and Millimeter-Wave Monolithic Circuits Symposium Digest of Papers, Albuquerque, NM, USA, 1–3 June 1992; pp. 39–41. [[CrossRef](#)]
11. Dabag, H.; Hanafi, B.; Golcuk, F.; Agah, A.; Buckwalter, J.F.; Asbeck, P.M. Analysis and Design of Stacked-FET Millimeter-Wave Power Amplifiers. *IEEE Trans. Microw. Theory Tech.* **2013**, *61*, 1543–1556. [[CrossRef](#)]
12. Pornpromlikit, S.; Jeong, J.; Presti, C.D.; Scuderi, A.; Asbeck, P.M. A Watt-Level Stacked-FET Linear Power Amplifier in Silicon-on-Insulator CMOS. *IEEE Trans. Microw. Theory Tech.* **2010**, *58*, 57–64. [[CrossRef](#)]
13. Kim, J.; Dabag, H.; Asbeck, P.; Buckwalter, J.F. Q-Band and W-Band Power Amplifiers in 45-nm CMOS SOI. *IEEE Trans. Microw. Theory Tech.* **2012**, *60*, 1870–1877. [[CrossRef](#)]
14. Oßmann, P.; Fuhrmann, J.; Dufrène, K.; Fritzin, J.; Moreira, J.; Pretl, H.; Springer, A. Design of a Fully Integrated Two-Stage Watt-Level Power Amplifier Using 28-nm CMOS Technology. *IEEE Trans. Microw. Theory Tech.* **2016**, *64*, 188–199. [[CrossRef](#)]
15. Zhang, C.; Li, Z.; Cheng, G.; Wang, H.; Li, Z. A 26.5–40 GHz Stacked Power Amplifier in 130 nm SiGe BiCMOS Technology. In Proceedings of the 2018 IEEE International Conference on Integrated Circuits, Technologies and Applications (ICTA), Beijing, China, 21–23 November 2018; pp. 36–37. [[CrossRef](#)]
16. Aikio, J.P.; Hietanen, M.; Tervo, N.; Rahkonen, T.; Pärssinen, A. Ka-Band 3-Stack Power Amplifier with 18.8 dBm Psat and 23.4% PAE Using 22nm CMOS FDSOI Technology. In Proceedings of the 2019 IEEE Topical Conference on RF/Microwave Power Amplifiers for Radio and Wireless Applications (PAWR), Orlando, FL, USA, 20–23 January 2019; pp. 1–3. [[CrossRef](#)]
17. Mohammadi, S.; Shan, H.; Conrad, N.; Hathorn, S.; Peterson, J. High-Efficiency Stacked Cell CMOS SOI Power Amplifiers for 5G Applications. In Proceedings of the 2019 IEEE MTT-S International Microwave Conference on Hardware and Systems for 5G and Beyond (IMC-5G), Atlanta, GA, USA, 15–16 August 2019; pp. 1–4. [[CrossRef](#)]
18. Chang, Y.; Lu, B.; Wang, Y.; Wang, H. A Ka-Band Stacked Power Amplifier with 24.8-dBm Output Power and 24.3% PAE in 65-nm CMOS Technology. In Proceedings of the 2019 IEEE MTT-S International Microwave Symposium (IMS), Boston, MA, USA, 2–7 June 2019; pp. 316–319. [[CrossRef](#)]
19. Inoue, A.; Goto, S.; Kunii, T.; Ishikawa, T.; Matsuda, Y. A high efficiency, high voltage, balanced cascode FET. In Proceedings of the IEEE MTT-S International Microwave Symposium Digest 2005, Long Beach, CA, USA, 17 June 2005; pp. 4–672. [[CrossRef](#)]
20. Lee, C.; Kim, Y.; Koh, Y.; Kim, J.; Seo, K.; Jeong, J.; Kwon, Y. A 18 GHz Broadband Stacked FET Power Amplifier Using 130 nm Metamorphic HEMTs. *IEEE Microw. Wirel. Compon. Lett.* **2009**, *19*, 828–830. [[CrossRef](#)]
21. Park, Y.; Kim, Y.; Choi, W.; Woo, J.; Kwon, Y. X-to-K band broadband watt-level power amplifier using stacked-FET unit cells. In Proceedings of the 2011 IEEE Radio Frequency Integrated Circuits Symposium, Baltimore, MD, USA, 5–7 June 2011; pp. 1–4. [[CrossRef](#)]
22. Kim, Y.; Kwon, Y. Analysis and Design of Millimeter-Wave Power Amplifier Using Stacked-FET Structure. *IEEE Trans. Microw. Theory Tech.* **2015**, *63*, 691–702. [[CrossRef](#)]
23. Nguyen, D.P.; Pham, A. An Ultra Compact Watt-Level Ka-Band Stacked-FET Power Amplifier. *IEEE Microw. Wirel. Components Lett.* **2016**, *26*, 516–518. [[CrossRef](#)]
24. Ramella, C.; Piacibello, A.; Camarchia, V.; Pirola, M.; Quaglia, R. Characterization-oriented design of a compact GaAs MMIC 3-stacked power cell. In Proceedings of the 2016 21st International Conference on Microwave, Radar and Wireless Communications (MIKON), Krakow, Poland, 9–11 May 2016; pp. 1–4. [[CrossRef](#)]
25. Piacibello, A.; Pirola, M.; Camarchia, V.; Ramella, C.; Quaglia, R. A Ku-band Compact MMIC PA based on Stacked GaAs pHEMT cells. In Proceedings of the 2018 International Workshop on Integrated Nonlinear Microwave and Millimetre-wave Circuits (INMMIC), Brive La Gaillarde, France, 5–6 July 2018; pp. 1–3. [[CrossRef](#)]

26. Thome, F.; Leuther, A.; Schlechtweg, M.; Ambacher, O. Broadband High-Power W-Band Amplifier MMICs Based on Stacked-HEMT Unit Cells. *IEEE Trans. Microw. Theory Tech.* **2018**, *66*, 1312–1318. [[CrossRef](#)]
27. van der Bent, G.; de Hek, P.; van Vliet, F.E. Design Procedure for Integrated Microwave GaAs Stacked-FET High-Power Amplifiers. *IEEE Trans. Microw. Theory Tech.* **2019**, *67*, 3716–3731. [[CrossRef](#)]
28. Ezzeddine, B.A.; Hung, H.A.; Viveiros, E.; Huang, H. High-power GaN MMIC PA Over 40–4000 MHz. In Proceedings of the 2013 IEEE MTT-S International Microwave Symposium Digest (MTT), Seattle, WA, USA, 2–7 June 2013; pp. 1–4. [[CrossRef](#)]
29. Martin, A.; Reveyrand, T.; Campovecchio, M.; Aubry, R.; Piotrowicz, S.; Floriot, D.; Quere, R. Design of GaN-based balanced cascode cells for wide-band distributed power amplifier. In Proceedings of the 2007 European Microwave Integrated Circuit Conference, Munich, Germany, 8–10 October 2007; pp. 154–157. [[CrossRef](#)]
30. Costanzo, F.; Giofrè, R.; Camarchia, V.; Colantonio, P.; Limiti, E. A Ka-band Doherty Power Amplifier using an innovative Stacked-FET Cell. In Proceedings of the 2019 15th Conference on Ph.D Research in Microelectronics and Electronics (PRIME), Lausanne, Switzerland, 15–18 July 2019; pp. 165–168. [[CrossRef](#)]
31. Ramella, C.; Pirola, M.; Colantonio, P. A Ka-band 33 dBm Stacked Power Amplifier Cell in 100 nm GaN-on-Si Technology. In Proceedings of the 2020 23rd International Microwave and Radar Conference (MIKON), Warsaw, Poland, 5–8 October 2020; pp. 204–208. [[CrossRef](#)]
32. Sun, W.; Kuo, C. A 19.1% PAE, 22.4-dBm 53-GHz Parallel Power Combining Power Amplifier with Stacked-FET Techniques in 90-nm CMOS. In Proceedings of the 2019 IEEE MTT-S International Microwave Symposium (IMS), Boston, MA, USA, 2–7 June 2019; pp. 327–330. [[CrossRef](#)]
33. Li, S.; Fritsche, D.; Carta, C.; Ellinger, F. Design and characterization of a 12–40 GHz power amplifier in SiGe technology. In Proceedings of the 2018 IEEE Topical Conference on RF/Microwave Power Amplifiers for Radio and Wireless Applications (PAWR), Anaheim, CA, USA, 14–17 January 2018; pp. 23–25. [[CrossRef](#)]
34. Jayamon, J.; Gurbuz, O.; Hanafi, B.; Agah, A.; Buckwalter, J.; Rebeiz, G.; Asbeck, P. Spatially power-combined W-band power amplifier using stacked CMOS. In Proceedings of the 2014 IEEE Radio Frequency Integrated Circuits Symposium, Tampa, FL, USA, 1–3 June 2014; pp. 151–154. [[CrossRef](#)]
35. Nguyen, D.P.; Pham, T.; Pham, A. A 28-GHz Symmetrical Doherty Power Amplifier Using Stacked-FET Cells. *IEEE Trans. Microw. Theory Tech.* **2018**, *66*, 2628–2637. [[CrossRef](#)]
36. Ezzeddine, A.K.; Huang, H.C. The high voltage/high power FET (HiVP). In Proceedings of the IEEE Radio Frequency Integrated Circuits (RFIC) Symposium 2003, Philadelphia, PA, USA, 9–10 June 2003; pp. 215–218. [[CrossRef](#)]
37. Ramella, C.; Piacibello, A.; Camarchia, V.; Pirola, M. Electro-magnetic Crosstalk Effects in a Millimeter-wave MMIC Stacked Cell. In Proceedings of the 2020 International Workshop on Integrated Nonlinear Microwave and Millimetre-Wave Circuits (INMMiC), Cardiff, UK, 16–17 July 2020; pp. 1–3. [[CrossRef](#)]
38. Ezzeddine, A.K.; Huang, H.C.; Singer, J.L. UHiFET—A new high-frequency High-Voltage device. In Proceedings of the 2011 IEEE MTT-S International Microwave Symposium, Baltimore, MD, USA, 5–10 June 2011; p. 1. [[CrossRef](#)]
39. Berroth, M.; Bosch, R. Broad-band determination of the FET small-signal equivalent circuit. *IEEE Trans. Microw. Theory Tech.* **1990**, *38*, 891–895. [[CrossRef](#)]
40. Thome, F.; Maroldt, S.; Ambacher, O. Prospects and Limitations of Stacked-FET Approaches for Enhanced Output Power in Voltage-Controlled Oscillators. *IEEE Trans. Microw. Theory Tech.* **2016**, *64*, 836–846. [[CrossRef](#)]
41. Gasmı, A.; El Kaamouchi, M.; Poulain, J.; Wroblewski, B.; Lecourt, F.; Dagher, G.; Frijlink, P.; Leblanc, R. 10W power amplifier and 3W transmit/receive module with 3 dB NF in Ka band using a 100 nm GaN/Si process. In Proceedings of the 2017 IEEE Compound Semiconductor Integrated Circuit Symposium (CSICS), Miami, FL, USA, 22–25 October 2017; pp. 1–4. [[CrossRef](#)]
42. OMMIC. *U-GaN Design Manual V1.2.4*; OMMIC: Limeil-Brévannes, France, 2018.
43. Fersch, T.; Quaglia, R.; Pirola, M.; Camarchia, V.; Ramella, C.; Khoshkholgh, A.J.; Ghione, G.; Weigel, R. Stacked GaAs pHEMTs: Design of a K-band power amplifier and experimental characterization of mismatch effects. In Proceedings of the 2015 IEEE MTT-S International Microwave Symposium, Phoenix, AZ, USA, 17–22 May 2015; pp. 1–4. [[CrossRef](#)]