



# Downscaling With an Unstructured Coastal-Ocean Model to the Goro Lagoon and the Po River Delta Branches

Francesco Maicu<sup>1,2\*</sup>, Jacopo Alessandri<sup>1,3</sup>, Nadia Pinardi<sup>1,2</sup>, Giorgia Verri<sup>2</sup>, Georg Umgiesser<sup>4,5</sup>, Stefano Lovo<sup>3</sup>, Saverio Turolla<sup>3</sup>, Tiziana Paccagnella<sup>3</sup> and Andrea Valentini<sup>3</sup>

<sup>1</sup> Department of Physics and Astronomy, Alma Mater Studiorum – University of Bologna, Bologna, Italy, <sup>2</sup> Fondazione Centro Euro-Mediterraneo sui Cambiamenti Climatici, Bologna, Italy, <sup>3</sup> Regional Agency for Prevention, Environment and Energy of Emilia-Romagna (Arpae), Bologna, Italy, <sup>4</sup> Institute of Marine Sciences, National Research Council, Venice, Italy, <sup>5</sup> Marine Research Institute, Klaipeda University, Klaipeda, Lithuania

## OPEN ACCESS

### Edited by:

Manuel Espino Infantes,  
Polytechnic University of Catalonia,  
Spain

### Reviewed by:

Ivica Vilibic,  
Institute of Oceanography  
and Fisheries (IZOR), Croatia  
Peng Yao,  
Hohai University, China

### \*Correspondence:

Francesco Maicu  
francesco.maicu@unibo.it

### Specialty section:

This article was submitted to  
Coastal Ocean Processes,  
a section of the journal  
Frontiers in Marine Science

**Received:** 30 December 2020

**Accepted:** 30 March 2021

**Published:** 22 April 2021

### Citation:

Maicu F, Alessandri J, Pinardi N,  
Verri G, Umgiesser G, Lovo S,  
Turolla S, Paccagnella T and  
Valentini A (2021) Downscaling With  
an Unstructured Coastal-Ocean  
Model to the Goro Lagoon and the Po  
River Delta Branches.  
Front. Mar. Sci. 8:647781.  
doi: 10.3389/fmars.2021.647781

The Goro Lagoon Finite Element Model (GOLFEM) presented in this paper concentrates on the high-resolution downscaled model of the Goro Lagoon, along with five Po river branches and the coastal area of the Po delta in the northern Adriatic Sea (Italy) where crucial socio-economic activities take place. GOLFEM was validated by means of validation scores (bias – BIAS, root mean square error – RMSE, and mean absolute error – MAE) for the water level, current velocity, salinity and temperature measured at several fixed stations in the lagoon. The range of scores at the stations are: for temperature between  $-0.8$  to  $+1.2^{\circ}\text{C}$ , for salinity from  $-0.2$  to 5 PSU, for sea level 0.1 m. The lagoon is dominated by an estuarine vertical circulation due to a double opening at the lagoon mouth and sustained by multiple sources of freshwater inputs. The non-linear interactions among the tidal forcing, the wind and the freshwater inputs affect the lagoon circulation at both seasonal and daily time scales. The sensitivity of the circulation to the forcings was analyzed with several sensitivity experiments done with the exclusion of the tidal forcing and different configurations of the river connections. GOLFEM was designed to resolve the lagoon dynamics at high resolution in order to evaluate the potential effects on the clam farming of two proposed scenarios of human intervention on the morphology of the connection with the sea. We calculated the changes of the lagoon current speed and salinity, and using opportune fitness indexes related to the clams physiology, we quantified analytically the effects of the interventions in terms of extension and persistence of areas of the clams optimal growth. The results demonstrate that the correct management of this kind of fragile environment relies on both long-term (intervention scenarios) and short-term (coastal flooding forecasts and potential anoxic conditions) modeling, based on a flexible tool that is able to consider all the recorded human interventions on the river connections. This study also demonstrates the importance of designing a seamless chain of models that are capable of integrating local effects into the coarser operational oceanographic models.

**Keywords:** coastal lagoons, estuarine circulation, freshwater mixing, model downscaling, high resolution hydrodynamic modeling, human intervention evaluation, storm surge prediction

## INTRODUCTION

Understanding and modeling the river deltas transitional environments is still a scientific challenge due to the multi-scale processes occurring and the incomplete knowledge of human modifications and activities that impact or have impacted the system. Observations needed to properly validate the numerical modeling of these environments require not only records of the environmental variables such as temperature, salinity, sediments and biochemistry, but also the human activities occurring at all-time scales.

In the complex morphology of the river deltas coexist different transitional water bodies where riverine water mixes with seawater. The magnitude of this process leads to the formation of salinity gradients, hence the formation of stratified currents typical of the estuarine circulation (Kjerfve and Magill, 1989; Aubrey and Friedrichs, 1996; Valle-Levinson, 2010).

In these transitional environments the morphological evolution of the coastline is fast due to the sediment load of the rivers and the littoral transport (Correggiari et al., 2005; Syvitski et al., 2005; Tesi et al., 2011). The consequences can be both coastal erosion in the case of sediment deficits, and occlusion of the inlets of the lagoons due to the sediment deposition and spit gemination.

Coastal environments also collect nutrients and pollutants from the mainland. A moderate nutrients load is crucial for flora and fauna growth, both in terms of biodiversity and anthropic exploitation (aquaculture, tourism, and recreation), however, an excessive load can have dangerous ecological and economic consequences.

Knowledge of all these processes and their interaction is well established in the scientific community at large. However, the challenge is to encourage the local government to adopt a science-based management of these environments, for the protection of the natural resources and their sustainable exploitation. Sánchez-Arcilla et al. (2016) pointed out that the management strategies for the coastal environments planned by the local governments, should ensure an equilibrium between the achievement of benefits in a long-term perspective following a top-down approach, together with short-term interventions arising from the bottom-up requests of the stakeholders.

In this perspective the numerical modeling is a primary tool for assessing environmental modifications at several time and spatial scales (both anthropic and natural, so “what-if” scenarios can be simulated), forecasting extreme events (Aleynik et al., 2016), and providing early warning systems (Alfieri et al., 2012; Harley et al., 2016).

This study originated from the request of a science-based approach for the interventions proposed by the stakeholders of the Goro Lagoon and was developed within a constant discussion with them. In this paper we show an integrated high-resolution river and coastal modeling system, Goro Lagoon Finite Element Model (GOLFEM), capable of reproducing the local circulation, that was specifically validated with local observations and applied for the analytical evaluation of the proposed interventions. This goal was achieved merging the model results and clams physiology to produce spatial indexes for their optimal growth, so

that this model can be then used to test several “what if” scenarios for coastal management.

## The Study Site

The Goro Lagoon is part of the interconnected system of the Po River Delta (**Figure 1**) that comprises five river branches, seven lagoons, and several wetlands: a more exhaustive description is given in Maicu et al. (2018). The lagoon has an area of 35 km<sup>2</sup> and a volume of 51 × 10<sup>6</sup> m<sup>3</sup>, is delimited by the Po of Goro river branch, and is partially separated from the sea by two spits, the Scanno of Goro and Scanno of Volano.

Exchange with the sea occurs through a 3 km wide and very shallow inlet, which is the submerged part of a previous spit that started to erode in 1991 after a channel had been dredged in the middle. At the same time a new seaward spit (the present Scanno of Goro) started to grow along the eastern coastline. The older spit is actually internal on the lagoon, and together with the Scanno of Goro occlude a valuable area devoted in the past to clam nurseries. This evolution is shown in the multiannual Landsat imagery slideshow retrievable with Google Earth. The overall accretion tendency of the Scanno of Goro is reported on the EMODnet Geology website<sup>1</sup> and in Simeoni et al. (2007) and Bezzi et al. (2019).

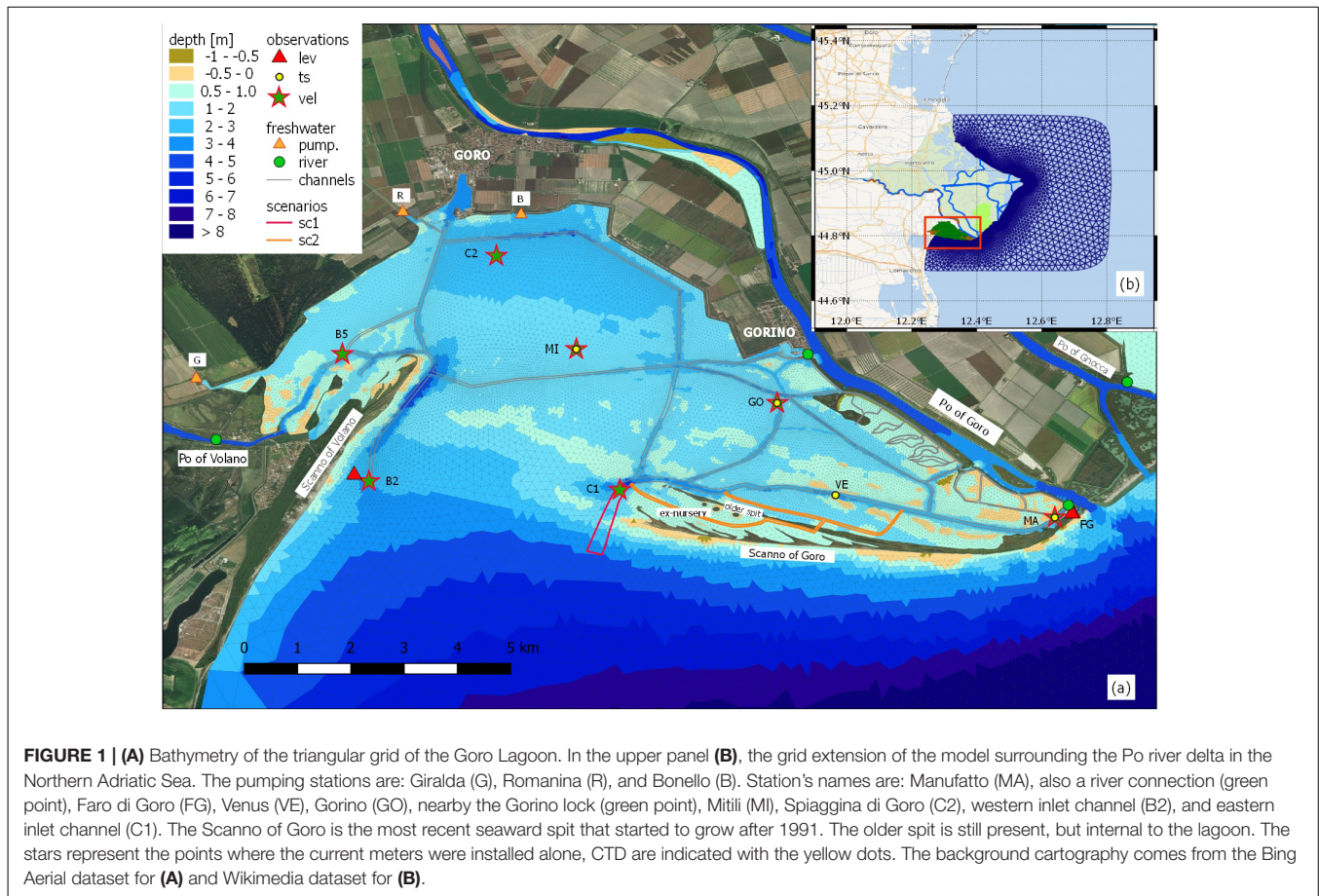
Two channels are dredged on the inlet (**Figure 1a**). The bathymetry map shows the lower depth on the sea side of both channels, in particular the eastern one, meaning that there is a tendency toward occlusion because of the deposition of the sediments transported by coastal currents.

Similarly to the Po delta lagoons, the Goro lagoon has a small morphological variability (Maicu et al., 2018), the channel network is simple and the salt march area is not significant. Therefore, most of the lagoon volume (87%) is determined by the tidal flats, with an average depth of 1.5 m. The salt marches and intertidal flats occupy only 6% of the total area of the lagoon, which is going to furtherly diminish due to the combined effect of the subsidence (−8 mm/year, Tosi et al., 2016) and the sea level rise (≈ +6 mm/year, IPCC-AR5 estimation for the RCP 4.5, IPCC, 2013).

The Goro Lagoon has a large freshwater input, mainly from the Po of Volano in the western area and Po of Goro along the eastern boundary. Another four pumping stations are located on the mainland boundary (**Figure 1a**). The main connections with the Po of Goro river are the Gorino lock and the gate at the Goro lighthouse called “Manufatto,” which are managed manually by the local authorities to ensure the most favorable conditions for the lagoon productivity but unfortunately without recording. These gates are opened during the summer to enhance the water renewal, and are closed during the river floods to ensure an acceptable salinity in the lagoon and prevent sediment deposition.

The Goro Lagoon is continually evolving due to the multiple and variable forcings as well as human interventions aimed at enhancing the lagoon's productivity. The physical interventions on the Goro Lagoon were first evaluated by O’Kane et al. (1992) with a 3D finite difference baroclinic model implemented on a

<sup>1</sup><https://www.emodnet-geology.eu/data-products/coastal-behavior/>



150 m-resolution grid. After a severe dystrophic crisis in 1992, the biological issues of the lagoon were initially studied with a zero-dimensional biogeochemical model by Zaldívar et al. (2003). Marinov et al. (2006) carried out another hydrodynamic characterization of the lagoon with a structured grid three dimensional model at 150 m resolution, coupled with a fate model to investigate the spatial distribution of several pesticides coming from the mainland (Carafa et al., 2006). Finally the model was coupled with a biogeochemical module in the work by Marinov et al. (2008). The above studies were the first comprehensive, step-by-step approach to implement a modeling chain capable of answering the main issues of the lagoon when the studies were made. However, the interconnection with the Adriatic Sea was approximated because no operational large-scale model of the Adriatic Sea was yet available for initial and lateral boundary conditions, making the results only a step toward the final solution.

## The Downscaling Approach

The physical processes in the open ocean are driven by the so-called energy cascade (Vallis, 2006; Aluie et al., 2018) and occurs at several time and spatial scales depending on the location, the magnitude of the forcings and the stratification of the water column. In the marginal seas the bathymetric constrain and the freshwater inputs become relevant and can modify the circulation both at regional scale (Verri et al., 2018) and at larger scale

(Huang and Mehta, 2010; Coles et al., 2013). An adequate representation of these processes should rely on numerical model capable to span between different spatial scales, such the ones shown in Bellafiore et al. (2021); Ferrarin et al. (2019), Maicu et al. (2018); Federico et al. (2017), Trotta et al. (2017), and Fortunato et al. (2017).

Goro Lagoon Finite Element Model was designed in order to fill the modeling gap between the previous “single compartment” approach of the Adriatic Sea sub-regional basin model, AdriaROMS (Chiggiato and Paolo, 2008; Russo et al., 2013) and the need for detailed geometry in the coastal areas of the Emilia Romagna coasts. The added value of GOLFEM lies in the smooth transfer of the offshore dynamics and thermohaline structure of the water column, down to the coast and finally into the lagoon and the river, at increasing model resolution for the detection of cross-scale processes (Valentini et al., 2007). This work is the result of a double downscaling, from the regional Copernicus CMEMS Mediterranean ocean model Med-MFC (Clementi et al., 2017) to the sub-regional model AdriaROMS and finally to GOLFEM.

AdriaROMS, is the Adriatic Sea model, which has been operational at the Hydro Meteo Climate Service of Arpa (Arpa-SIMC) since 2005. The model has a curvilinear horizontal grid with a resolution ranging from 2-km in the north Adriatic to 10 km in the south Adriatic and a vertical structure of 20 terrain-following levels. It is forced by COSMO-5M (COSMO

Newsletter, 2004) at the surface, whereas at the open boundary at the Strait of Otranto, the temperature, salinity and velocity conditions are provided by the Mediterranean model MED-MFC. The main tidal components are derived from the Oregon State University (OSU) TPXO model (Egbert and Erofeeva, 2002) and added at the open boundary in Otranto. The Po River discharge is introduced as a source of mass and momentum using real time measurements and kept constant during each forecast. On the other hand, the runoff of another 48 rivers and karstic springs (along the eastern Adriatic coast) is introduced using monthly climatologies derived from the literature.

We designed a flexible modeling workflow that can be easily updated (bathymetry, coastline, and forcings) so that, on the one hand, it can produce reliable simulations for “what if” scenarios, and on the other hand, it is also capable to forecast extreme events (Valentini et al., 2007; Harley et al., 2016), flooding or dystrophic crises (Viaroli et al., 2001, 2006)

In this model workflow, the processes are added smoothly: for example in AdriaROMS four tidal components (S2, M2, O1, and K1) are added to the daily MED-MFC sea level at the Otranto Strait, the resolution of the meteorological forcing increases from 9 km (ECMWF for Med-MFC) to 5 km to force AdriaROMS. In GOLFEM, the tidal components are eight (see section “Lateral and Surface Forcing”), the river-sea interaction is modeled explicitly, and the atmospheric forcing is taken from a meteorological model at the horizontal resolution of 2.8 km (COSMO-I2, Steppeler et al., 2003).

## Aims of the Paper

The first question addressed by this paper is the establishment of a solid understanding of the Goro lagoon dynamics, especially the interconnection of the lagoon circulation with the open sea. This was not possible until now, the previous models did not resolve such exchange, as mentioned before. Furthermore, we tried to understand how each forcing (tides, wind and freshwater inputs) acts on the seasonal lagoon dynamics and salinity distribution.

A second question is related to “what if” scenarios to evaluate the impacts of lagoon bathymetry changes. Assessing such scenarios assumes that the memory of the system is short enough so that the numerical simulations are done with different bathymetries or forcings with minor adjustment periods (memory of the initial conditions). The hydrodynamic changes are then statistically assessed within the assumption of a steady-state regime.

## OBSERVATIONAL DATA AND NUMERICAL MODEL SETUP

### Observations

The calibration of GOLFEM is based on the data collected by the Regional Agency for Prevention, Environment and Energy of Emilia-Romagna (hereafter Arpae).

### Bathymetry

The bathymetric representation is fundamental for a correct simulation of the circulation in this shallow lagoon where the bottom boundary layer affects the shallow water column.

We used several datasets and unified them into a single altimetric reference (Genova IGM, 1942) using appropriate offsets. In the open sea area, the EMODnet dataset at a 250 m resolution was merged with the coastal multibeam survey operated by Arpae in 2012, while in the lagoon, several single beam surveys were conducted by Arpae from 2004 to 2017. We merged these into a single sparse point dataset, considering most recent measurements when the data points overlap.

Along the river branches, we used the depth of the triangular elements of the numerical grid of Maicu et al. (2018). In the last 6 km of the Po of Goro branch, some single beam surveys were available, thus providing a reliable cross-section representation of the river.

Finally, we merged the three aforementioned collections and obtained a sparse point dataset that was interpolated on each triangular element of the mesh (**Figure 1a**).

### Fixed and Temporary Stations

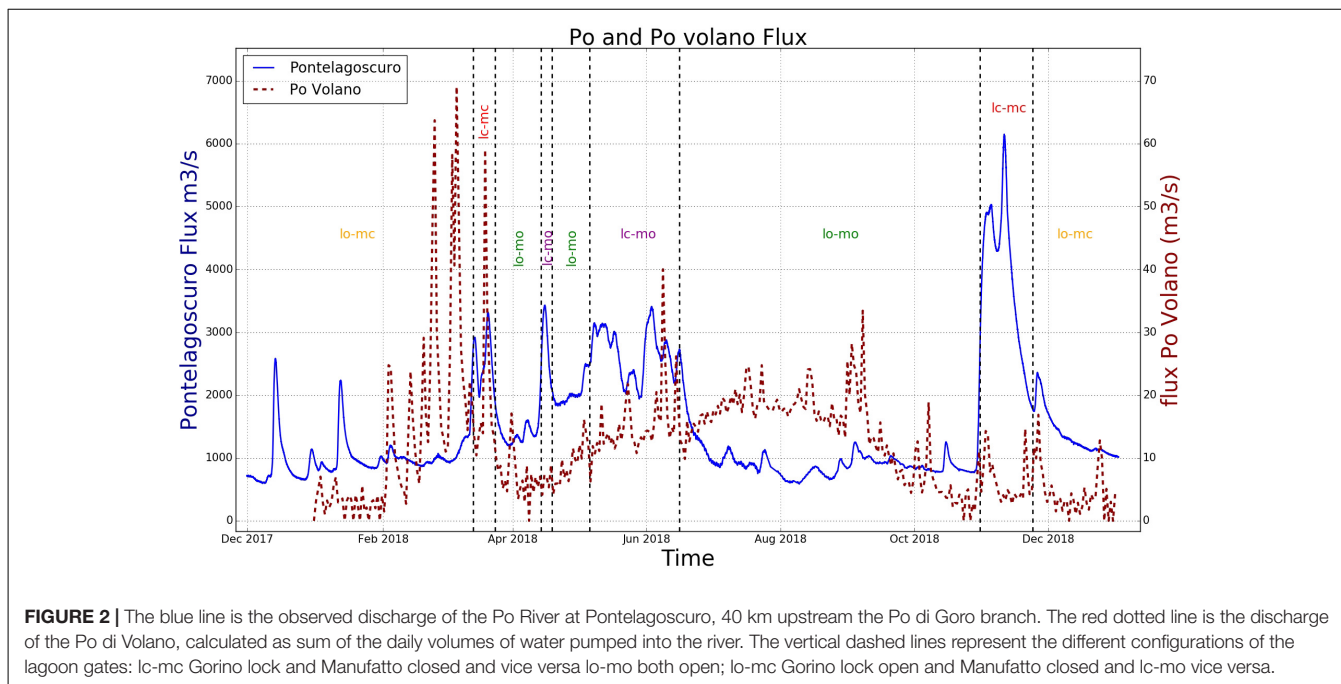
A field campaign was conducted in six stations during 2018 specifically for this project (**Figure 1a**). One current meter recorded a long time series at the Manufatto station, and the others recorded shorter time series. The instruments were deployed at fixed distance of one meter from the lagoon bottom. In addition, Arpae manages a network of fixed stations where the temperature and salinity are continuously recorded (yellow dots in **Figure 1**).

The sea level is measured by Arpae at the Goro lighthouse (FG in **Figure 1**), Porto Garibaldi (in the southwestern corner of the domain), and in Ariano Polesine, 40 km upstream of the Po of Goro branch. The tides in the northern Adriatic Sea have among the largest amplitudes in the Mediterranean Sea. The spectral analysis of the measured sea level in Porto Garibaldi shows that the largest tidal components are the lunar semi-diurnal M2 and the solar diurnal K1, and the maximum tidal range is about 1 m.

### Freshwater Fluxes

The total discharge of the Po river (**Figure 2**) is computed using a discharge rate relation (Arpae, 2018) with the measured water level at Pontelagoscuro, 90 km upstream of the main river mouth. In 2018 the average discharge was  $1533 \text{ m}^3\text{s}^{-1}$ , very close to the mean of the reference period 1980–2010 ( $1,477 \text{ m}^3\text{s}^{-1}$ ). The discharge shows the typical moderate flood period from March to June due to the rainfall and snowmelt, and a significant discharge event in November. The river water temperature in Pontelagoscuro was measured by Arpae approximately every 15 days, from 1989 to 2011, and we thus calculated monthly climatological values which were imposed as lateral boundary condition. At the river upstream section the salinity was imposed to be zero.

The Po of Volano is the largest freshwater input into the Goro lagoon. It is an ancient river branch that now collects freshwater from several mainland pumping stations. The raw data (the functioning time of the pumping stations) were collected and the daily discharge was computed. The Po of Volano timeseries (**Figure 2**) shows several discharge peaks that take place prior to the Po river flood period and during the summer when the crops are irrigated: the mean flow in 2018 was about  $12 \text{ m}^3\text{s}^{-1}$ .



The 2018 average discharges were: Giralda  $1.6 \text{ m}^3\text{s}^{-1}$ , Romanina,  $5.9 \text{ m}^3\text{s}^{-1}$ , Bonello  $0.5 \text{ m}^3\text{s}^{-1}$ , Pomposa  $0.24 \text{ m}^3\text{s}^{-1}$ . The water temperature for the Po of Volano and Romanina plant was taken from the Arpae report on the water quality, where monthly data were reported since 2006. A monthly mean temperature was then computed and used as input for the model. The same temperature as the Romanina channel was also used for Giralda, Bonello and Pomposa pumping stations.

Riverine water enters the lagoon from the Po of Goro at the Gorino lock and Manufatto. The Gorino lock is closed during the high floods of the Po river and the Manufatto is partially closed approximately from November to March (personal communication). Without any other data available, we defined a threshold water level of +2.0 m m.s.l. measured in Ariano Polesine on the Po of Goro branch in order to detect the river floods and the closure periods of the Gorino lock and Manufatto.

## The Numerical Model of the Goro Lagoon (GOLFEM)

The numerical model implemented here is based on the Shyfer code (System of Hydrodynamic Finite Element Modules<sup>2</sup>; Umgiesser et al., 2004; Cucco and Umgiesser, 2006), an unstructured grid model with triangular elements, capable of describing complex areas since it is possible to change easily the resolution of the elements (see **Appendix A** for model equations and parametrizations). The grid resolution spans from 2.2 km at the open boundary to less than 10 m in the narrowest channels inside the lagoon, with a total number of 77,496 elements.

The wide extension of the domain (**Figure 1b**) is needed to cover the entire delta Po area, which is the most important

freshwater source discharging in the Adriatic Sea with a strong impact on the mass and salt balance of the area (Ludwig et al., 2009). The domain is also defined within the branches of the Po river.

The water column is represented vertically by 17 layers with a thickness ranging from 1 m in the upper 10 m, increasing to a maximum thickness of 7 m in the last layer. The first layer thickness changes with time according to the variations of the sea level due to tides, steric effects and atmospheric forcing. The absorption of the shortwave radiation follows a double exponential form (Paulson and Simpson, 1977) with attenuation coefficients  $\zeta_1$  and  $\zeta_2$  and a parameter R representing the percentage of entering radiation computed according to water type 9 in Jerlov (1976) (see **Appendix A**). The bottom stress is parametrized with a quadratic formulation and it is again described in details in **Appendix A**.

Due to the human operations of closing and opening the connections with the Po of Goro at Gorino lock and Manufatto, described in the previous section, different grids settings were established. Four different grid configurations were arranged: *lo-mo*, where Manufatto and the Gorino lock are both open; *lo-mc*, with the lock open and Manufatto closed; *lc-mo*, with the lock closed and the Manufatto open; *lc-mc*, with both the connections closed. These different grid settings were used based on the periods indicated in **Figure 2**, and for the water level threshold outlined in section “Freshwater Fluxes.”

## Lateral and Surface Forcing

The initialization and the open boundary conditions are provided by AdriaROMS model analyses, with a 2.2 km of resolution, which in turn is nested at the Otranto strait CMEMS MED-MFS. GOLFEM is provided with the temperature, salinity and sea level as a Dirichlet boundary condition when the flow

<sup>2</sup><https://github.com/SHYFEM-model/>

is directed toward the domain, while it is a zero-gradient condition at the boundary when the current flows out of the domain. The zonal and meridional velocities are nudged with a nudging time of 30 min.

In order to obtain the best tidal signal, a “detiding” procedure was applied to the AdriaROMS sea level using the Doodson filter (Doodson, 1928). The sea water level was then computed at the open boundary nodes adding the tidal signal (eight components: M2, S2, K2, N2, K1, O1, P1, and Q1) from the TPXO model (Egbert and Erofeeva, 2002), obtaining a more realistic sea level.

The river discharge is treated as an open boundary condition where transport and temperature are given by measurements (section “Freshwater Fluxes”) and the salinity is assumed to be zero. Since Po discharge is measured before the branching of the Po in the delta, a repartition relation was calculated to obtain the discharge of the Po of Goro as a function of the total discharge. This function was found with a cubic polynomial interpolation of the discharge measurements in the Po of Goro branch (ARPA Veneto, 2012), taken over several years but then interrupted.

The fluxes at the air-sea interface are treated with the MED-MFS bulk formulae (Pettenuzzo et al., 2010). The surface atmospheric fields are provided by COSMO-I2 meteorological model analysis at 2.8 km of horizontal resolution. The input variables are zonal and meridional velocity at 10 m, temperature and dewpoint temperature at 2 m, sea level atmospheric pressure, precipitation and total cloud cover.

### Model Calibration

In a complex environment like the one described here, a comprehensive calibration of the model is needed. The first series of sensitivity experiments focused on the bottom friction roughness length  $\lambda_B$  (Appendix A). A period of 3 months was chosen for the calibration of the model, from 1 February 2018 to 1 May 2018. Values of  $\lambda_B$  ranging from 0.005 to 0.08 m were assigned to different areas of the domain, based on common sediment and known roughness characteristics. For each of the eight experiments, the model output was compared with the tide gauge and current observations in order to evaluate the model improvements. We found best values for  $\lambda_B$  in different areas: tidal flats 0.005 m, channels and open sea 0.01 m, rivers bed 0.02 m, river floodplains 0.08 m, saltmarshes 0.05 m, Manufatto and Gorino lock 0.015 m.

Other four sensitivity experiments were carried out for the tracer diffusion coefficient  $K_h$  with tested values of 0.2, 0.02, 0, and 1  $\text{m}^2\text{s}^{-1}$ . In this case we compared temperature and salinity output with CTD observations. The differences between the sensitivity tests were negligible and the final value was chosen to be 0.2  $\text{m}^2\text{s}^{-1}$ .

### Model Validation

After the calibration, the model set up was validated over a 1-year simulation from 1 January 2018 to 1 January 2019. The statistical scores for the validation are defined in Appendix B and they are correlation R, root mean square error (RMSE), bias (BIAS), and mean absolute error (MAE).

Figure 3 compares the velocity, temperature, salinity, and sea level of the model output with the observations at two stations

over the four available. Figures 3C,D show the temperatures for the whole year at station Manufatto and Mitili. In the winter months of 2018, the water temperature at the two stations was on average between 5 and 10°C with the lowest values of 2°C, while in August the values continuously exceeded 30°C, with peaks up to 32°C. We did not calculate the correlation R because the comparison between timeseries with strong seasonal signal (such as temperature) would mask an eventual modeling error giving rise to unrealistic large correlation value. The RMSE, BIAS, and MAE are shown in Table 1: the four stations average of BIAS, RMSE and MAE is -0.8, 1.3, and 1°C, respectively. This discrepancy can be due to several factors: the knowledge of the upstream condition for the water temperature at the Po of Goro boundary, the water temperature at the pumping stations, the open sea boundary condition that fluxes heat in the lagoon. It is plausible that the temperature errors are a combination of the aforementioned factors, each one with its own weight.

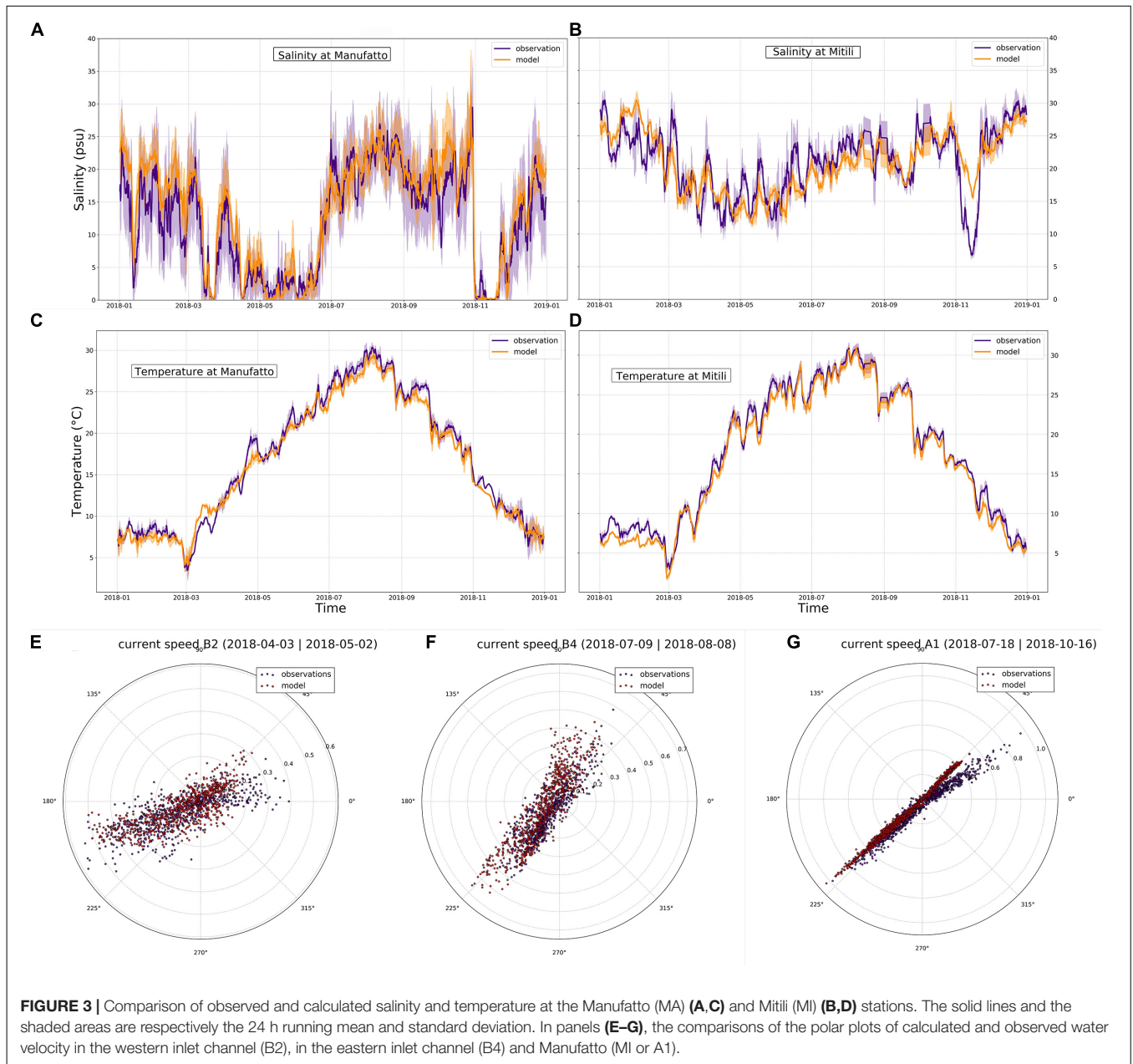
The salinity error is higher in absolute value than the one in temperature. The average R, BIAS, RMSE, and MAE shown in Table 1 amount to 0.7, 0.2, 5.1, and 3.9 PSU, respectively. These scores indicate that the model is saltier than observations and we argue that this is due to the unknown discharges and salinity values at the river mouths and the channels. However, Figures 3A,B show that the model is capable to follow the general structure of the salinity with sometimes big departures from the peak values, giving rise to large errors. This is quite evident in Figure 3B that shows a large mismatch between model results and observations occurring in November 2018 during a Po river flood. The Mitili station (MI in Figure 1a) is located in the central lagoon and several freshwater inputs concur to give maximum uncertainty especially for the Gorino Lock and the Manufatto gate where we do not have data on the opening/closing of the channels (see Figure 1).

Three tide gauges stations are considered for the validation of sea level: Porto Garibaldi, Ariano and Faro of Goro. The model shows a very good agreement with observations with a mean correlation of 0.9 and a RMSE of 0.12 m (Table 1). Further improvements in the sea level simulation could be obtained probably with an enhanced detiding procedure.

The velocity was compared with the current velocity and direction observations (Figure 1 for the position of the stations). Of the five observational points, only Manufatto, B2 (western inlet channel) and C1 (eastern inlet channel) were chosen for validation. The BIAS and RMSE are -0.11 and 0.28  $\text{ms}^{-1}$ , respectively for Manufatto, -0.01 and 0.12  $\text{ms}^{-1}$  for B2 and 0.03 and 0.13  $\text{ms}^{-1}$  for C1. Polar plots in Figures 3G-I show the comparison of the direction of the currents for stations B2, C1 and Manufatto, respectively. In general, there is a good agreement in the flow direction, which is mainly E-NE/W-SW for B2 and NE/SE for C1/B4.

## RESULTS

In this section, we study the circulation of the Goro lagoon and its thermohaline characteristics, highlighting the connections with the tidal, meteorological and hydrological forcing. These findings



**FIGURE 3 |** Comparison of observed and calculated salinity and temperature at the Manufatto (MA) (A,C) and Mitili (MI) (B,D) stations. The solid lines and the shaded areas are respectively the 24 h running mean and standard deviation. In panels (E–G), the comparisons of the polar plots of calculated and observed water velocity in the western inlet channel (B2), in the eastern inlet channel (B4) and Manufatto (MI or A1).

**TABLE 1 |** Statistical scores for temperature and salinity and water level, as defined in Appendix B.

Station	Salinity				Temperature			Station	Water level		
	R	BIAS (psu)	RMSE (psu)	MAE (psu)	BIAS (°C)	RMSE (°C)	MAE (°C)		R	RMSE (m)	MAE (m)
Manufatto	0.83	1.62	5.55	4.2	−0.46	1.17	0.94	Faro Goro	0.86	0.12	0.09
Mitili	0.74	−0.11	3.69	2.87	−0.79	1.14	0.93	P.to Garibaldi	0.87	0.12	0.1
Venus	0.57	−1.2	6.5	5.08	−1.08	1.58	1.28	Ariano P.ne	0.98	0.13	0.09
Gorino	0.63	0.64	4.76	3.6	−0.97	1.34	1.1				

The correlation R for the temperature is not reported because it is not significant for highly seasonal signals captured with observations or calculated values in 1 year time period. The BIAS between model and observations was not calculated for the sea level because the observed time series did not have a known and common altimetric reference.

arise from the combination of two techniques. First the model downscaling propagates the sea level signal (including the large-scale meteorological surge) through the shelf into and the lagoon, and fully resolves the coastal mixing processes occurring outside the lagoon, in this multiple-mouths delta. Second the high-resolution modeling of the lagoon can resolve the hydrodynamics originated by several forcing in such complex environment with multiples connection to other water bodies.

## The Goro Lagoon Circulation

**Figure 4** highlights that the Goro lagoon is an estuarine basin with an average surface outflow and a bottom inflow. The baroclinic vertical structure of the velocity (**Figure 4c**) is at larger amplitude in the western inlet channel because of the deeper channel and the nearby freshwater inputs of the Po of Volano (see **Figure 1a**).

Harmonic analysis (Pawlowicz et al., 2002) of the simulated sea level in the harbors of Porto Garibaldi (outside the lagoon), Goro (northwest corner), and Gorino (northeast corner) show that the amplitudes of all the tidal components do not change between outside and inside the lagoon due to the flat bathymetry of the lagoon and the relative wide opening of the inlet (**Table 2**). Moreover, the tidal components have the same phase lag at Goro and Gorino meaning that the tidal signal is evenly transmitted throughout the lagoon. The circulation pattern is the same during spring and neap tide, with the current streamlines that spread from the main channel to the western and central area of the lagoon, and from the secondary channel toward Gorino and the eastern corner of the lagoon. The maximum current speed during the spring tide is about  $0.8\text{--}1\text{ ms}^{-1}$  in the two inlet channels, while the speed does not exceed  $0.2\text{ ms}^{-1}$  in most of the lagoon. Conversely, during neap tide, the circulation weakens but do not change, and the maximum current values decrease to  $0.5$  and  $0.1\text{ ms}^{-1}$ , respectively. No significant variation in the tidal circulation was detected at seasonal time scale.

**Figure 5** shows that in the western inlet channel the flow is alternating between baroclinic and barotropic. During the neap tide period a baroclinic flow appears, manifested by the red and blue lines crossings in **Figure 5**. When the semidiurnal tidal signal is large, for most of the time the flow is barotropic either in or out of the lagoon, while when the signal is diurnal and the tidal range is reduced, the vertical structure of the flow can be baroclinic for major portions of the day, like it is shown in **Figure 5** for February 7 or 9 of 2018.

**Table 3** shows the magnitude and characteristics of the volume fluxes at the inlet section of **Figure 4**. The net flux of the western inlet channel is toward the lagoon ( $10.3\text{ m}^3\text{s}^{-1}$ ) while in the remaining parts of the section the net flow is seaward. The central tidal flat is very shallow, so that no baroclinic circulation develops, and the flux is large toward the open sea ( $-39.2\text{ m}^3\text{s}^{-1}$ ). In the eastern inlet channel, the net flux is also exiting the lagoon ( $-8.8\text{ m}^3\text{s}^{-1}$ ).

In conclusion the Goro lagoon is a large estuarine area with a net transport of water out of the lagoon equal to  $-37.8\text{ m}^3\text{s}^{-1}$ , the largest volume transport of open sea waters occurs in the western channel and the largest outflow of surface waters is from

the central portion of the inlet section (Valle-Levinson, 2010; Valle-Levinson et al., 2015).

Being a land locked lagoon, the importance of winds in generating the circulation and the sea level change inside the lagoon cannot be underestimated. In the Adriatic Sea, the two dominant wind regimes, the Bora (NE), and Sirocco (SE) force the general circulation (Orlić et al., 1994; Ursella et al., 2006; Jeffries and Lee, 2007). The morphology of the Po Delta coastline significantly modifies the coastal current in front of the Goro Lagoon (Falcieri et al., 2013; Maicu et al., 2018; Bellafiore et al., 2019). The Bora strengthens the SW coastal current and piles up the water on the coastline south of the delta (**Figure 6A**). The effect of the Bora wind regime on the lagoon average circulation is to force the surface currents to exit the lagoon favoring in turn the advection of low salinity waters over the whole lagoon (**Figure 6C**). These meteorological conditions do not generally cause flooding in the Goro lagoon while the Sirocco does. **Figure 6B** shows that during an intense Sirocco, the lagoon is exposed to an average increase in sea level of up to 10 cm. During the peak of the event, the sea level difference between the Goro harbor and the shelf outside the lagoon reaches 20 cm. The wind driven average circulation at the inlet is mainly from the sea to the lagoon (**Figure 6B**) and higher salinity waters are advected into the lagoon (**Figure 6D**).

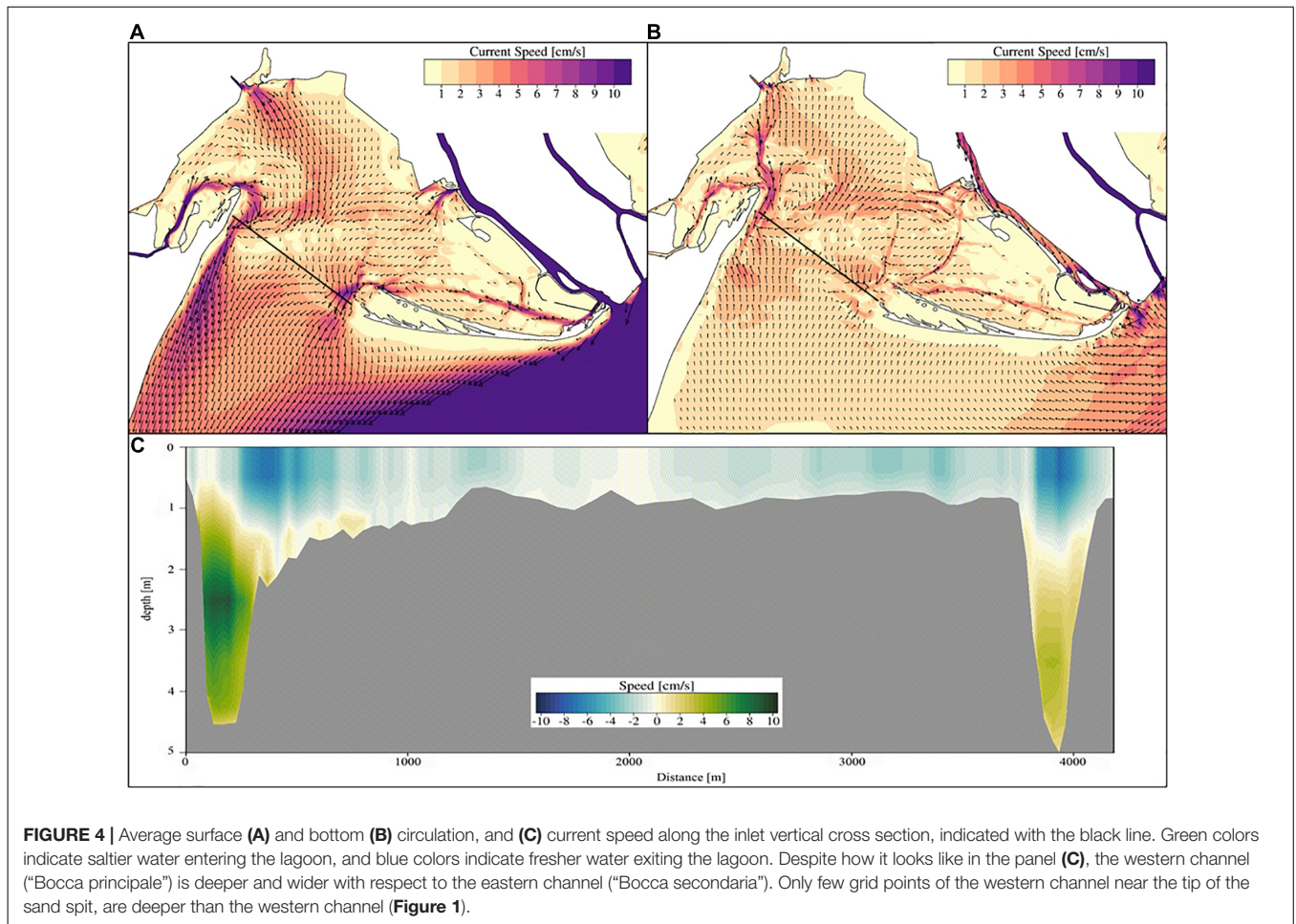
The water renewal time (WRT; Cucco and Umgiesser, 2006) calculated with the high-resolution model and shown in **Figure 7**, confirms the findings of the previous work of Maicu et al., 2018, with a lagoon-averaged value of 5.8 days in 2018. The increase in the WRT occurs at the central part of the inlet section due to the bathymetric constraint of the tidal flat, while low WRT values in the marginal areas of the lagoon are ensured by the estuarine outflow generated by the riverine input of the Po of Volano and Po of Goro. The highest WRTs (10–12 days) are found in the ex-nursery area between the two sand spits of the Scanno of Goro and in a western basin between the Scanno of Volano and the Po of Volano river outflow (**Figure 1**).

## Salinity

The salinity pattern of the Goro lagoon is typical of an estuarine basin. **Figure 8A** shows that in most of the lagoon, the surface salinity is between 15 and 25 PSU. The only significant salinity gradient is in the western area where the salinity is less than 10 PSU and the salinity stratification (**Figure 8B**) occurs mainly in the deep channels. The diurnal standard deviation (i.e., the average over the simulated period of the standard deviation calculated on a daily basis) of the surface salinity (**Figure 8C**) highlights the areas where the mixing mainly occurs, i.e., in the central tidal flat and in particular along the western inlet channel. A large area of the lagoon has small daily salinity standard deviation ( $<1$  PSU) meaning that there is almost no mixing. Outside the lagoon, the two areas with larger standard deviation indicate the occurrence of the mixing between the sea water and both lagoon and Po of Goro freshwater.

On the other hand (**Figure 8D**), in the eastern basin of the lagoon, the yearly surface salinity standard deviation is significant (6–8 PSU), due to the seasonal variability of the freshwater inputs from the Po of Goro.





**FIGURE 4 |** Average surface (A) and bottom (B) circulation, and (C) current speed along the inlet vertical cross section, indicated with the black line. Green colors indicate saltier water entering the lagoon, and blue colors indicate fresher water exiting the lagoon. Despite how it looks like in the panel (C), the western channel (“Bocca principale”) is deeper and wider with respect to the eastern channel (“Bocca secondaria”). Only few grid points of the western channel near the tip of the sand spit, are deeper than the western channel (Figure 1).

**TABLE 2 |** Characteristics of the offshore tidal signal and its modification inside the lagoon.

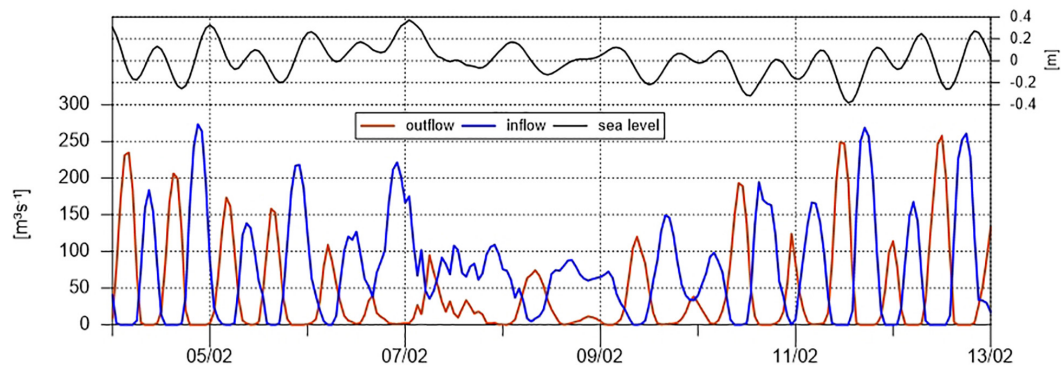
Tidal component	Period (h)	Offshore		Goro harbor		Gorino	
		Amplitude (m)	Phase (o)	Amplitude difference (m)	Delay (min)	Amplitude difference (m)	Delay (min)
M2	12.42	0.16	263.97	-0.01	15.9	-0.01	15.5
K1	23.93	0.14	58.45	0.00	6.6	0.00	6.4
S2	12.00	0.11	264.52	0.00	18.2	-0.01	17.5
P1	24.07	0.04	62.62	0.00	3.9	0.00	8.3
O1	25.82	0.03	60.78	0.00	29.6	0.00	30.3
K2	11.97	0.03	268.23	0.00	18.0	0.00	16.2
N2	12.66	0.03	264.89	0.00	23.8	0.00	23.3

The amplitude differences and phase lags (delay) were calculated with respect the offshore model node.

Figure 8C also shows the mixing in front of the Po of Goro mouth, where the tidal action and the southward along-shore current concur to mixing process of the freshwater river plume (Guarnieri et al., 2013; Bellafiore et al., 2019).

The high-resolution unstructured grid resolves the saltwater intrusion in the Po of Goro branch, even though the model was not calibrated for this purpose. Figure 9a shows that the seawater flows upstream at the river bottom, forcing the riverine water to accelerate downstream in the surface layer as the salinity increases due to the mixing.

Between July and October 2018 the average discharge of the Po river was  $845 \text{ m}^3\text{s}^{-1}$  (SD  $130 \text{ m}^3\text{s}^{-1}$ ) and the average saltwater intrusion was about 13 km (Figure 9a). This fits very well with the distances measured by the provincial authorities of Ferrara between 2003 and 2009 in the corresponding range of the Po river discharge of  $845 \pm 130 \text{ m}^3\text{s}^{-1}$ . The maximum extension of the salt wedge exceeded 20 km twice in August 2018 when the total Po river discharge was at a minimum of between 600 and  $650 \text{ m}^3\text{s}^{-1}$ .



**FIGURE 5 | (Bottom panel)** Time series of the net volume inflow/outflow in  $\text{m}^3\text{s}^{-1}$  calculated in the western inlet channel of the inlet section of **Figure 4** and (**top panel**) sea level in m calculated at the sampling point B2, for 1 week (5–13) of February 2018.

**TABLE 3 |** Yearly mean volume fluxes through the three different portions of the section at the opening of the Goro Lagoon (**Figure 1**).

	Western channel	Central tidal flat	Eastern channel
Flux layer 1	-15.9	-39.2	-19.9
Flux layer 2	3.0	-	-0.2
Flux layer 3	12.6	-	4.0
Flux layer 4	8.5	-	5.1
flux layer 5	2.1	-	2.1
Net barotropic flow	10.3	-39.2	-8.9

The positive values mean an entering volume flux in the lagoon and the negative values, an outflow. The units are  $\text{m}^3\text{s}^{-1}$ .

In summary, the mean flow through the Gorino lock and the Manufatto gate transport waters that are brackish. The average salinity of the mean flow into the lagoon is 9 and 5.5 psu (mean flows 11.5 and  $4 \text{ m}^3\text{s}^{-1}$ ) at the Manufatto and at the Gorino lock, respectively.

## Temperature

The temperature stratification is smaller compared to the salinity vertical gradients, and is limited to the channels. The largest stratification (surface-bottom temperature) occurs when the lagoon vertical mixing is not yet effective in November and December (with a minimum vertical difference of  $-1.5^\circ\text{C}$ , not shown) and also in April when the surface waters start to warm up (with maximum vertical gradients of about  $1^\circ\text{C}$ ). The lowest and highest monthly temperature of the water column in the lagoon in 2018 occurred in February and August (**Figures 10A,B**) with basin averaged values of  $6.0$  and  $27.9^\circ\text{C}$  (basin standard deviation  $0.68$  and  $0.24^\circ\text{C}$ ), respectively. **Figure 10A** also show that the difference of the water temperature between the lagoon and open sea is more relevant in winter (up to  $4^\circ\text{C}$  in December) while temperature in summer is similar.

**Figure 10C** shows that during February the water column has a small ( $<2.5^\circ\text{C}$ ) daily range (difference between maximum and minimum temperature during 24 h) throughout most of the lagoon. In August (**Figure 10D**) the daily range of the

temperature is slightly higher according to the larger daily range of the air temperature and the summer daily cycle heat fluxes. The daily variations of the water temperature in the lagoon depend both on the tidal inflow/outflow and the atmospheric heat fluxes in different areas of the lagoon and in different seasons. The largest daily range of the lagoon water temperature occurs in December (not shown) and is due to the combined effect of the tidal inflow (the open sea is warmer) and the daily cycle of the atmospheric forcing.

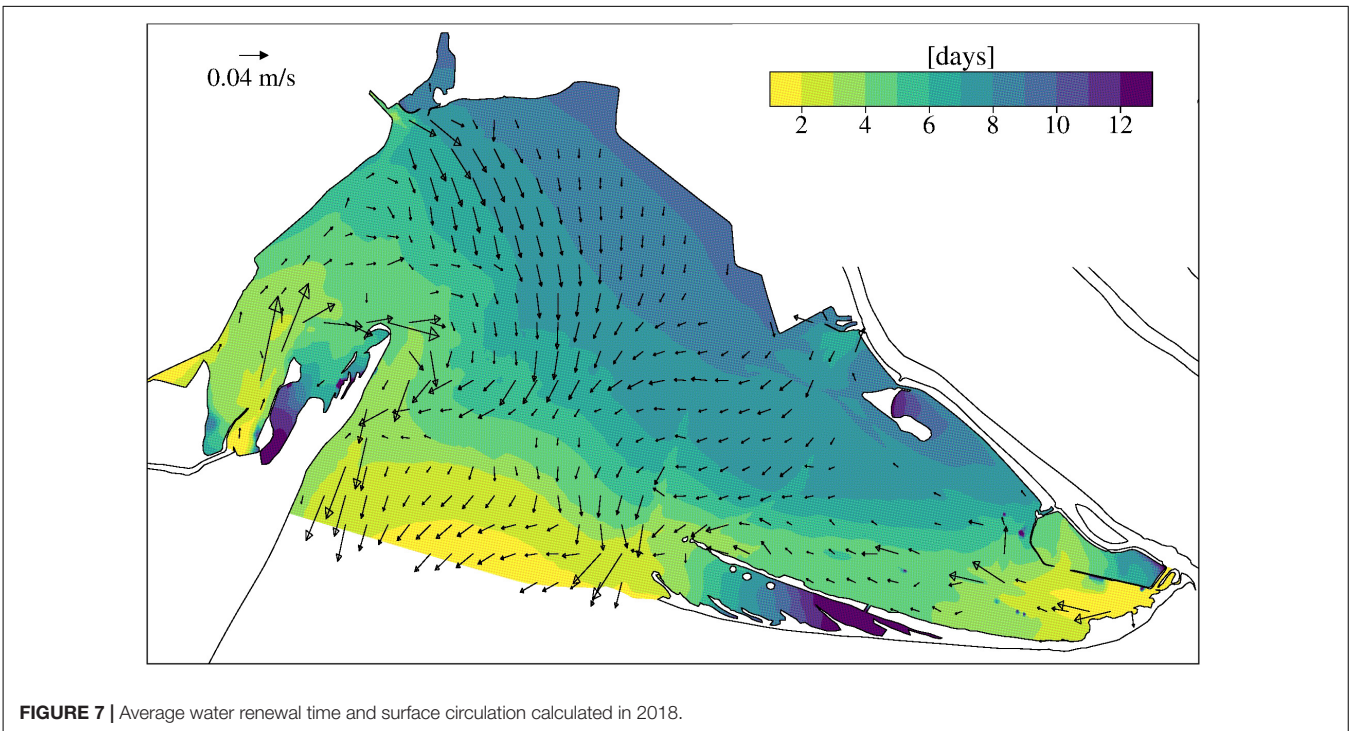
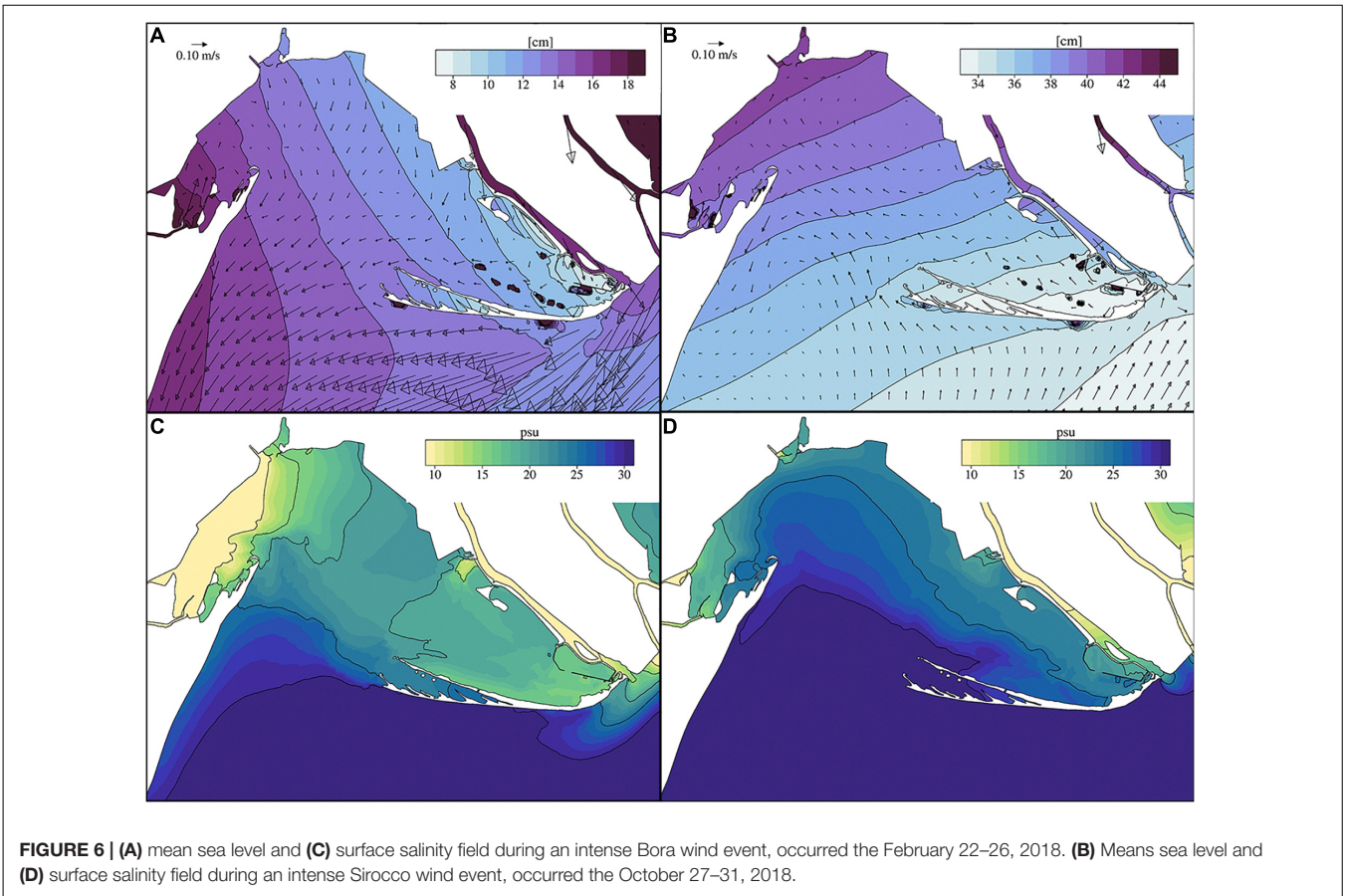
## UNDERSTANDING THE LAGOON CIRCULATION

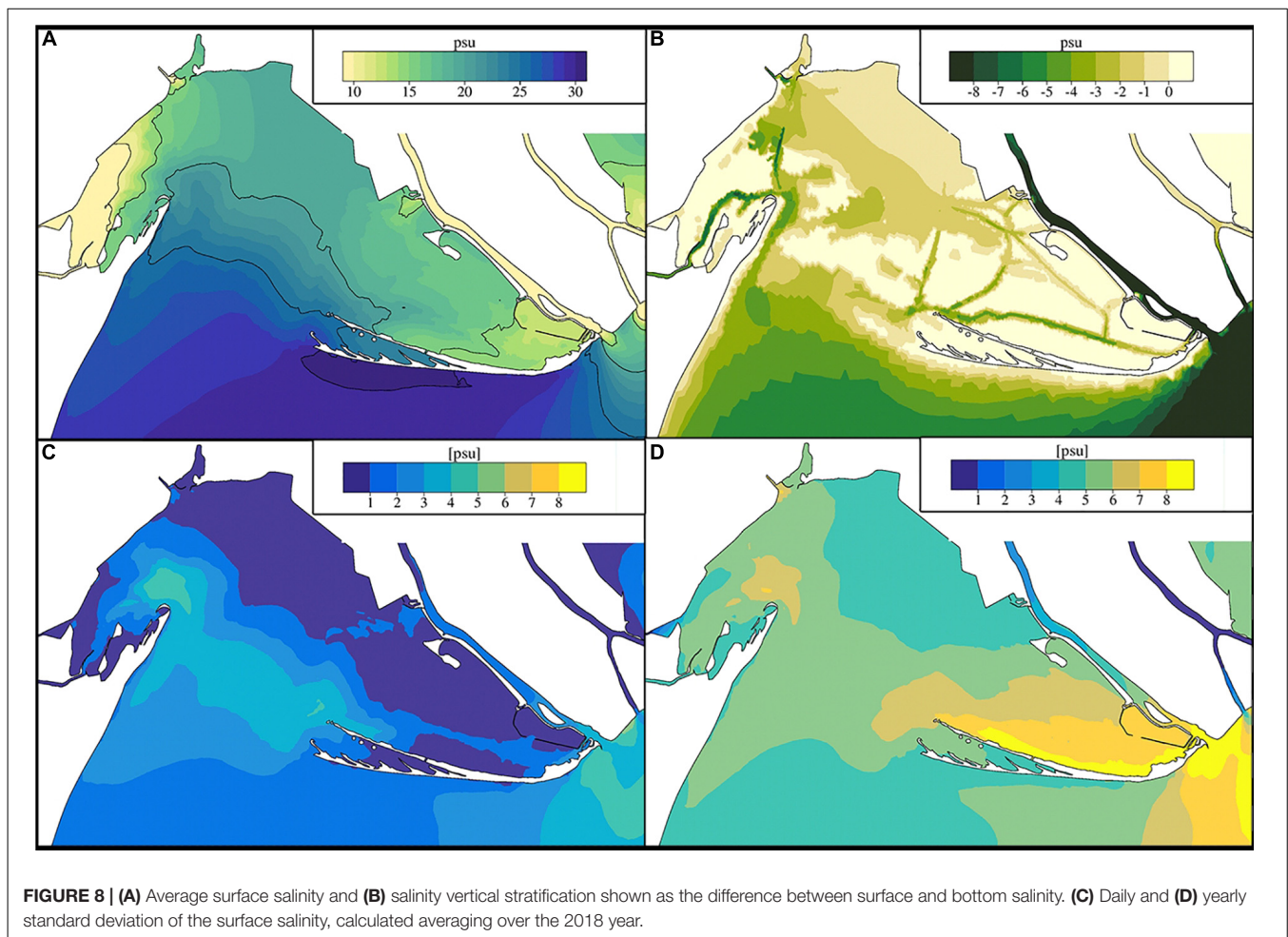
The lagoon hydrodynamics is generated by the non-linear interaction of tides, freshwater inputs and winds. In this section, we aim to understand how each forcing influences the lagoon dynamics in the simulated period.

The average circulation is baroclinic in both inlet channels and in the lagoon during all months (**Figure 11**), meaning that the freshwater inputs are the main drivers of the estuarine circulation of **Figure 4**. The surface layer volume flux is highly variables and shows maximum peaks during the periods of larger freshwater inputs and vice versa, while the magnitude of the circulation at the bottom show less variability with respect to the 2018 average.

**Figure 11** shows that in the western inlet the surface lagoon outflow follows the seasonal freshwater cycle from Po of Volano and pumping stations, while in the eastern inlet the outflow is less correlated to the freshwater inputs from the Po of Goro discharge. This happens because the tidal and wind forcing induce a partial redistribution of the freshwater volume throughout the lagoon. The deeper inflow is largest in February, March, August and September, when the N-NE prevailing wind regime increases the lagoon-open sea density gradients, as shown in **Figure 6C**, that in turn enhances the baroclinic circulation. The supporting plots and data are available in the **Supplementary Figures 1, 2**.

We analyzed in detail the effects of the freshwater inputs on the circulation and salinity using GOLFEM in the period October 31–November 24, 2018 during a flood of the Po





of Goro (**Figure 2**). In the best simulation case, the Gorino Lock and the Manufatto gates were closed during the Po flood (**Figure 2**) while in this experiment they both were left open, adding a freshwater inflow of  $+48 \text{ m}^3\text{s}^{-1}$  with respect to the previous configuration. The lower salinity in the central lagoon (from  $-6$  to  $-10$  PSU with respect to previous configuration) increases the horizontal density gradient with the open sea, and in turn the deep layer baroclinic inflow is larger.

The effect of the tidal forcing was then analyzed running two simulations with GOLFEM with and without tidal forcing, in the period May 6–June 6, 2018 where moderate freshwater inputs are found (**Figure 2**). In both simulations the Po of Goro connection were considered open. Without the tidal forcing the average freshwater inflow at the Manufatto gate increases ( $+8.4 \text{ m}^3\text{s}^{-1}$ ) decreasing the salinity. This is an indirect effect of tidal forcing on the salinity that is working in the same direction of an increased discharge. Outside the lagoon the salinity slightly increases ( $+1$  PSU), so that the overall effect is the sharpening of the lagoon-sea density gradient, and strengthening in turn of the estuarine circulation. Interestingly the magnitude of the inflow increases in the second and third layers indicated in **Table 3** because without tidal current the

vertical mixing decreases and the water column stratification increases. This evidence is reported in the summary tables in the **Supplementary Table 1**.

Finally to study the effects of winds, we evaluated the WRT every 18 days, a time interval longer than the highest WRT, condition that is necessary for its correct estimation (Cucco and Umgiesser, 2006) and the correlation with the wind events. The timeseries of the basin-averaged WRT in 2018 confirm that the lowest values are in February and March when the N-NE wind drives the surface circulation out of the lagoon. Conversely, higher WRT values are found at the end of October with the Sirocco wind that opposes the surface outflow. Furthermore, the WRT anomalies (see **Supplementary Figure 3**) with respect to the average value of 2018 (**Figure 7**) demonstrate that the larger the freshwater inputs, the lower is the WRT at the basin scale because the average surface outflow is larger.

In conclusion, the characteristics of the estuarine circulation of the Goro Lagoon is determined by the simultaneous working of freshwater inputs, tidal forcing and winds. For the salinity, freshwater input is dominant but also tidal forcing that helps to decrease the inflow from the Po di Goro. For WRT, the wind forcing is crucial. Tidal forcing through its effect on the net runoff