

This is the final peer-reviewed accepted manuscript of

PLAZZI, FEDERICO; Cassano A.; PASSAMONTI, MARCO: The quest for Doubly Uniparental Inheritance in heterodont bivalves and its invention in *Meretrix lamarckii* (Veneridae: Meretricinae). JOURNAL OF ZOOLOGICAL SYSTEMATICS AND EVOLUTIONARY RESEARCH 53. 1439-0469

DOI: 10.1111/jzs.12078

The final published version is available online at: <http://dx.doi.org/10.1111/jzs.12078>

Rights / License:

The terms and conditions for the reuse of this version of the manuscript are specified in the publishing policy. For all terms of use and more information see the publisher's website.

This item was downloaded from IRIS Università di Bologna (<https://cris.unibo.it/>)

When citing, please refer to the published version.

The quest for Doubly Uniparental Inheritance in heterodont bivalves and its detection in *Meretrix lamarckii* (Veneridae: Meretricinae)

FEDERICO PLAZZI, ANTONELLO CASSANO and MARCO PASSAMONTI

Abstract

Doubly Uniparental Inheritance (DUI) is possibly the most striking exception to the well known maternal inheritance of mitochondria. It poses several stimulating questions concerning among others the function of these organelles, sex determination, embryonic development, and evolutionary consequences. At present, DUI has been found in few species of bivalve molluscs, but more research is necessary to obtain a clearer picture of its distribution within the group, a picture that is mandatory to make any reasonable inference about its origin and evolutionary meaning. The debate about a single evolutionary origin of DUI versus multiple origins is still open. In this manuscript, we investigated seven species of heterodont bivalves and provide evidence for the presence of DUI in the venerid *Meretrix lamarckii*.

Key words: *Meretrix lamarckii* Doubly Uniparental Inheritance mitochondria Heterodonta mitochondrial inheritance

Introduction

The phenomenon of Doubly Uniparental Inheritance or DUI (Zouros 1994a,b), which is known only from bivalves, constitutes by far the most striking exception to the well known rule of maternal inheritance of mitochondria in animals. Briefly, species with DUI possess two separate mitochondrial lineages, termed M (male) and F (female), being sex linked: the F mitochondrial DNA (mtDNA) is passed by mother to the offspring irrespective of their sex, while the M mtDNA is passed by fathers to the male offspring, where it tends to localize in the germline (Breton et al. 2007; Passamonti and Ghiselli 2009; Passamonti et al. 2011).

Interest is growing in determining the exact distribution of DUI among bivalves, because this issue triggers further discussion about the origin of this peculiar mitochondrial feature, as shown by the pioneering works of Theologidis et al. (2008) and Doucet Beaupré et al. (2010). Autobranchiate bivalves are basically split into Palaeoheterodonta and Amarsipobranchia *sensu* Plazzi et al. (2011). Two main clusters are nested within Amarsipobranchia and both contain DUI species (Fig. 1): Pteriomorpha and Heterodonta.

Doubly Uniparental Inheritance (DUI) appears to be wide spread and somewhat conserved in the large, mainly freshwater superfamily Unionoidea (Palaeoheterodonta; Hoeh et al. 2002; Curole and Kocher 2005; Walker et al. 2006; Breton et al. 2009; Doucet Beaupré et al. 2010; and reference therein) and in mytilids (Pteriomorpha), especially in the genera *Mytilus* Linnaeus, 1758 (Skibinski et al. 1994a,b; Zouros 1994a,b) and *Musculista* Yamamoto and Habe, 1958 (Passamonti et al. 2011).

The phenomenon of DUI also appears among other bivalve families. For instance, it was detected and thoroughly characterized in the Manila clam *Venerupis philippinarum* (Passamonti and Scali 2001; Passamonti et al. 2003; Ghiselli et al. 2011; Milani et al. 2011). The presence of two different, sex linked, mitochondrial genomes was also reported for *Donax trunculus* Linnaeus, 1758 (Theologidis et al. 2008) and *Ledella ultima* (E. A. Smith, 1885) (Boyle and Etter 2013). Moreover, data in GenBank suggest the possible occurrence of DUI in the species *Solen grandis* Dunker, 1862 (GenBank accession numbers AB064985 and AB064983)

and *Cyclina sinensis* (Gmelin, 1791) (GenBank accession numbers AB040833, AB040834 and AB040835).

Until recently, a single appearance at the root of bivalves, or at least at the root of autobranchiate bivalves, was taken as most probable (see, e.g. Theologidis et al. 2008; Doucet Beaupré et al. 2010; Zouros 2013; and references therein). After the general pattern of mitochondrial inheritance through two distinct lineages, many similarities were evidenced between distantly related DUI species, like mytilids and venerids, from the female driven sex ratio bias to the different behaviour of sperm mitochondria in embryos of either sex (see Zouros 2013; and references therein). As a consequence, researchers generally considered as unlikely the idea of multiple origins of this complex phenomenon.

However, recent insights in supranumerary ORFs (Milani et al. 2013), which are sometimes found in mitochondrial genomes (see, e.g. Gissi et al. 2008; Breton et al. 2009; Pont Kingdon et al. 1998; Shao et al. 2006; Plazzi et al. 2013), suggest a possible viral origin of these sequences. If, as supposed (Milani et al. 2013; and reference therein), such sequences play a fundamental role in the onset of DUI, the idea of multiple origins of DUI, related to multiple infection horizontal transfer events, would become much more conceivable.

How is it possible to detect the presence of DUI in a given species? The first clue typically consists in mitochondrial heteroplasmy. If a significant divergence can be found and repeatedly confirmed between mitochondrial sequences obtained from sperm and eggs, this can be taken as an evidence of two separate mitochondrial lineages. In most cases, DUI was firstly detected using this method, as e.g. in *V. philippinarum* (*rrnL* gene; Passamonti and Scali 2001), *Musculista senhousia* (*cox1*, *cytb*, and *rrnL* genes; Passamonti 2007), *Donax trunculus* (*cytb* and *rrnL* genes; Theologidis et al. 2008), and *Ledella ultima* (*cytb* and *rrnL* genes; Boyle and Etter 2013).

In this manuscript, we describe results of our quest for DUI in heterodont bivalves and report our findings about two different, sex linked mtDNAs (and therefore the possible presence of DUI) in the venerid species *Meretrix lamarckii* Deshayes, 1853.

Materials and Methods

Specimens' collection

For this work, we examined specimens of the following species: *Callista chione* (Linnaeus, 1758) (Veneridae: Pitarinae), *Ensis siliqua*

Corresponding author: Federico Plazzi (federico.plazzi@unibo.it)
Contributing authors: Antonello Cassano (jakkal3084@libero.it), Marco Passamonti (marco.passamonti@unibo.it)

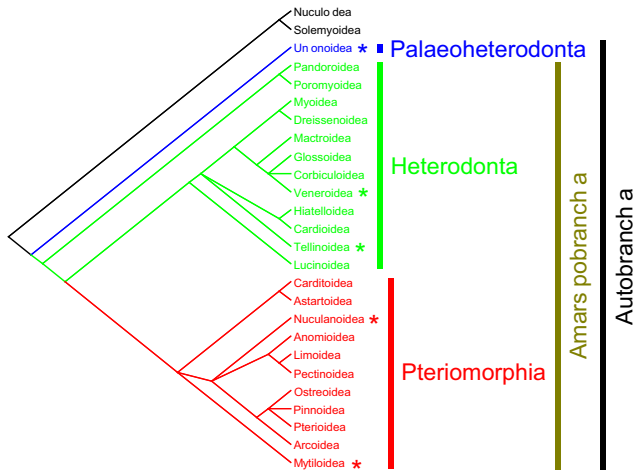


Fig. 1. Phylogeny of bivalves redrawn after Plazzi et al. (2011). For the sake of simplicity, superfamilies Pandoroidea and Poromyoidea were included within Heterodonta and superfamilies Carditoidea and Astartoidea were included within Pteriomorpha. For further details on these relationships, see Plazzi et al. (2011); and reference therein). Asterisks show superfamilies where Doubly Uniparental Inheritance (DUI) has been detected. Palaeoheterodonta, Heterodonta, Pteriomorpha, Amarsipobranchia *sensu* Plazzi et al. (2011), and Autobranchia are also shown.

minor (Chenu, 1843) (Cultellidae), *Meretrix lamarckii* Deshayes, 1853 (Veneridae: Meretricinae), *Mercenaria mercenaria* (Linnaeus, 1758) (Veneridae: Chioninae), *Mya arenaria* Linnaeus, 1758 (Myidae), *Ruditapes decussatus* (Linnaeus, 1758) (Veneridae: Tapetinae), and *Venus verrucosa* Linnaeus, 1758 (Veneridae: Venerinae). They were commercially purchased in Bologna, Italy, with the exception of *M. arenaria* and *R. decussatus* which were kindly provided by Prof. Edoardo Turrola from Goro, Italy and *M. mercenaria* and *M. lamarckii* which were purchased at the Tsukiji Wholesale Fish Market (Tokyo, Japan). Most species were sampled in March 2011 (*C. chione*, *E. siliqua minor*, and *V. verrucosa*) and June 2011/2012 (*M. mercenaria*, *M. lamarckii*, and *R. decussatus*), while *M. arenaria* was sampled in May 2011. All individuals were screened alive by microscopic inspection of gonad content to check sexual maturity and to determine the sex of each specimen. Number of specimens analysed for each species is shown in Table S1.

DNA extraction, PCR amplification, and sequencing

Sperm and eggs were extracted from gonads using capillary tubes. DNA extraction was carried out either with a standard phenol:chloroform protocol (see Sambrook and Russell 2006) or through the MasterPure™ Complete DNA and RNA Purification Kit (Epicentre, Madison, WI, USA), following manufacturer's instructions. PCR amplification of cytochrome c oxidase subunit I (*cox1*), large subunit ribosomal RNA (*rrnL*), and small subunit ribosomal RNA (*rrnS*) genes was performed with GoTaq® Flexi DNA Polymerase (Promega, Madison, WI, USA), as follows: 10 µl 5× Green GoTaq® Flexi Buffer, MgCl₂ 3 mM, nucleotides 800 µM each, primers 500 nM each, 1.25 U GoTaq® DNA Polymerase, 5 µl template DNA, ddH₂O up to 50 µl. Primers are listed in Table S2 along with their working conditions (annealing temperature/time); length of amplicons was 371 1009 bp for *cox1*, 322 366 bp for *rrnL*, and 451 663 bp for *rrnS* (see Table S3 for details) (see Folmer et al. 1994; Palumbi et al. 1996; Matsumoto 2003; Simon et al. 2006). PCR cycle was set following manufacturer's instructions, with extension time ranging from 1' to 1'30". PCR results were visualized onto a 1% electrophoresis agarose gel stained with ethidium bromide and purified through a standard isopropanol protocol, the Wizard® SV Gel and PCR Clean Up System (Promega), or an optimized version of the PEG protocol of Lis and Schleich (1975). Suitable amplicons were sequenced through the Macro gen Europe (Amsterdam, The Netherlands) facility.

Data analysis

Electropherograms and sequences were edited with the software MEGA 5.03 (Tamura et al. 2011), which was also used to compute *p* distances and standard errors with pairwise deletion of gaps and 1000 bootstrap replicates. Neutrality of sequence evolution was assessed through the McDonald and Kreitman (1991) test using DNAsp 5.10.01 (Librado and Rozas 2009) and comparing F and M sequences. Neutrality was also investigated through the codon based Z test of selection as implemented in MEGA 5.03 using five different methods, with pairwise deletion of gaps and 1000 bootstrap replicates; for the modified Nei Gojoberi method, a fixed transition/transversion ratio of 2 was set (see Nei and Kumar 2000; and references therein).

A phylogenetic analysis was conducted using those markers available for venerid DUI species known to date, i.e. *cox1* and *rrnS*. *Hiattella arc tica* (Hiattellidae), *Acanthocardia tuberculata* (Cardiidae), and *Coelomac tra antiquata* (Mactridae) were used as outgroups. Sequences other than those obtained from *M. lamarckii* for the present study were retrieved from GenBank; the complete phylogenetic dataset is shown in Table 1. Sequences were managed through CLC Sequence Viewer 6.6.2 (CLC bio A/S, Aarhus, Denmark), MICROSOFT EXCEL® 2007, and MEGA 5.03. Genes were separately aligned with MAFFT 6 (Katoh et al. 2002); Q INS i algorithm (accounting for secondary structures; Katoh and Toh 2008) was chosen for *rrnS*, while G INS i algorithm (Katoh et al. 2005) was selected for *cox1*. Each alignment was masked to eliminate noisy positions, not suitable for phylogenetic analysis, with the software BMGE (Cri-scuolo and Gribaldo 2010), which computes the information entropy associated to each single site of the alignment and discards those with an entropy level which could hamper phylogenetic inference. Indels found in each alignment were coded following the simple indel method proposed by Simmons and Ochoterena (2000) as implemented in the software GAPPACODER (Young and Healy 2003).

The two genes were concatenated in a single alignment and best fitting models of molecular evolution for either gene were selected with Kakusan4 (Tanabe 2007, 2011) using Treefinder (Jobb et al. 2004). Following our previous experience with bivalve phylogeny (Plazzi and Passamonti 2010; Plazzi et al. 2011), data were partitioned into the two genes and were allowed to evolve under different molecular evolution models; moreover, we compared four different phylogenetic models for *cox1* partition: (1) a standard '4by4' nucleotide analysis; (2) a codon analysis (Goldman and Yang 1994; Muse and Gaut 1994) with equal level of selection for all amino acid sites ('codon equal'); (3) a codon analysis using the M3 model ('codon m3'); (4) a codon analysis using the Ny98 model ('codon ny98'; Nielsen and Yang 1998). The Akaike Information Criterion (AIC; Akaike 1973) and the Bayes Factor (BF; Kass and Raftery 1995) were used as described in Plazzi and Passamonti (2010 and reference therein) to select the best *cox1* model for our dataset.

Bayesian analyses were carried out with MRBAYES 3.2.1 (Ronquist et al. 2011) hosted at the University of Oslo Biportal (<http://www.biportal.uio.no>). Each tree inference was carried out with two runs of 10 000 000 MC³ generations with 4 chains each; the default analysis was chosen for restriction data, using the option coding variable and modelling substitution occurrence with four discrete, gamma distributed categories. Log likelihood value of trees, PSRF (Gelman and Rubin 1992), and standard deviation of average split frequencies sampled every 1000 generations were used as proxies for convergence. Trees were sampled every 100 generations, and the consensus was computed after burnin removal with the command sumt. MrBayes 3.2.1 was also used to calculate the probability of each codon site being in a positively selected class. All trees were graphically edited by PHYLOWIDGET (Jordan and Piel 2008) and DENDROSCOPE (Huson et al. 2007) softwares.

Results

Genetic distances

A total of 160 sequences were obtained for this study: they are detailed in Table 2, along with the number of haplotypes for each gene/sex. Genetic data, along with voucher numbers, were uploaded to GenBank with accession numbers KF360089

Table 1. GenBank accession numbers of sequences used for phylogenetic reconstruction in this study. Bold entries were obtained for the present work, while others were downloaded from GenBank. Identical sequences from individuals sharing the same haplotype were deposited in GenBank only once; after the first reference, they are italicized. Labcodes were retrieved from GenBank (whenever available) or assigned to *Meretrix lamarckii* specimens by the authors

| Species | Authority | Specimen voucher | Labcode | <i>cox1</i> | <i>rrnS</i> |
|----------------------------------|--------------------------|------------------|---------|-----------------|-----------------|
| <i>Acanthocardia tuberculata</i> | (Linnaeus, 1758) | | | NC 008452 | NC 008452 |
| <i>Coelomactra antiquata</i> | Spengler, 1802 | | | NC 021375 | NC 021375 |
| <i>Cyclina sinensis</i> | (Gmelin, 1791) | | F | AB040835 | |
| | | | M1 | AB040833 | |
| | | | M2 | AB040834 | |
| <i>Hiatella arctica</i> | (Linnaeus, 1767) | | | NC 008451 | NC 008451 |
| <i>Meretrix lamarckii</i> | Deshayes, 1853 | | | NC 016174 | NC 016174 |
| | | BES:TKJ:004 | F02 | KF360109 | KF360174 |
| | | BES:TKJ:005 | F03 | KF360110 | KF360175 |
| | | BES:TKJ:007 | F04 | KF360110 | |
| | | BES:TKJ:008 | F05 | KF360110 | KF360176 |
| | | BES:TKJ:010 | F06 | | KF360177 |
| | | BES:TKJ:012 | F08 | KF360110 | |
| | | BES:TKJ:013 | F09 | KF360110 | KF360178 |
| | | BES:TKJ:014 | F10 | KF360111 | KF360179 |
| | | BES:TKJ:031 | F11 | KF360112 | KF360180 |
| | | BES:TKJ:033 | F12 | KF360113 | KF360181 |
| | | BES:TKJ:034 | F13 | KF360110 | KF360179 |
| | | BES:TKJ:036 | F15 | KF360114 | KF360182 |
| | | BES:TKJ:039 | F18 | KF360110 | KF360183 |
| | | BES:TKJ:040 | F19 | KF360110 | KF360176 |
| | | BES:TKJ:009 | M02 | KF360115 | KF360184 |
| | | BES:TKJ:032 | M03 | KF360116 | KF360185 |
| | | BES:TKJ:041 | M04 | | KF360186 |
| | | BES:TKJ:042 | M05 | KF360117 | KF360186 |
| | | BES:TKJ:043 | M06 | KF360118 | |
| | | BES:TKJ:044 | M07 | | KF360187 |
| | | BES:TKJ:046 | M08 | KF360119 | KF360186 |
| | | BES:TKJ:047 | M09 | | KF360188 |
| | | BES:TKJ:048 | M10 | KF360120 | KF360188 |
| | | BES:TKJ:025 | M14 | KF360117 | |
| <i>Meretrix lusoria</i> | (Roding, 1798) | | | NC 014809 | NC 014809 |
| <i>Meretrix meretrix</i> | (Linnaeus, 1758) | | | NC 013188 | NC 013188 |
| <i>Meretrix petechialis</i> | (Lamarck, 1818) | | | NC 012767 | NC 012767 |
| <i>Paphia amabilis</i> | (Philippi, 1847) | | | NC 016889 | NC 016889 |
| <i>Paphia euglypta</i> | (Philippi, 1847) | | | NC 014579 | NC 014579 |
| <i>Paphia textile</i> | (Gmelin, 1791) | | | NC 016890 | NC 016890 |
| <i>Paphia undulata</i> | (Born, 1778) | | | NC 016891 | NC 016891 |
| <i>Timoclea ovata</i> | (Pennant, 1777) | | | JF496777 | JF496752 |
| <i>Venus casina</i> | Linnaeus, 1758 | | | DQ458496 | JF496753 |
| <i>Venerupis philippinarum</i> | (A. Adams & Reeve, 1850) | | F | NC 003354 | NC 003354 |
| | | | FA1 | AF484332 | AF484332 |
| | | | FA2 | AF484333 | AF484333 |
| | | | FA3 | AF484334 | AF484334 |
| | | | FA4 | AF484335 | AF484335 |
| | | | FA5 | AF484336 | AF484336 |
| | | | M | AB065374 | AB065374 |
| | | | MA1 | AF484337 | AF484337 |
| | | | MA2 | AF484338 | AF484338 |
| | | | MA3 | AF484339 | AF484339 |
| | | | MA4 | AF484340 | AF484340 |

KF360190. Specimens were deposited in the collection of one of the authors (M. P.) at the Museum of Zoology of the University of Bologna, hosted by the Department of Biological, Geological and Environmental Sciences (Bologna, Italy). For specimen vouchers, see Table 1. In all cases, different haplotypes were found for each gene, with the only exception of *C. chione*: the four female and the six male *cox1* sequences obtained from *C. chione* were all identical (Table 2). Table 3 shows *p* distance comparisons within groups (F and M) and between groups (F versus M). Generally, genetic variability in F mtDNA is some what lower than in M mtDNA, even if this difference in most cases is not significant given the standard errors. The *p* distance

between F and M sequences is always intermediate to the values within the two groups.

The situation is different for *M. lamarckii*. The within group *p* distances are between 0.0028 and 0.0046, while, given that intervals computed using standard errors (± 0.0009 and ± 0.0015 , respectively) do not overlap, between groups *p* distances are significantly higher, being 0.0980 ± 0.0095 for *cox1* and 0.1168 ± 0.0128 for *rrnS* (Table 3). In fact, most variable sites in the *cox1/rrnS M. lamarckii* alignments (Datasets S1 and S2) are diagnostic differences between F and M sequences (Fig. 2) in *M. lamarckii*. Most mutations in *cox1* appear to be synonymous: aminoacid *p* distance is 0.0026 ± 0.0018 among F

Table 2. Number of sequences obtained for each species for each marker. In most cases, it was possible to sequence two out of three genes, while for some species (*Callista chione*, *Mya arenaria*, and *Venus verrucosa*) only *coxI* could be amplified. F and M haplotypes are counted together. GenBank accession numbers are also shown

| Species | Sequences | | | | | | Haplotypes | | | | | |
|------------------------------|-------------|------|-------------|------|-------------|------|-------------|--------------|-------------|--------------|-------------|--------------|
| | <i>coxI</i> | | <i>rrnL</i> | | <i>rrnS</i> | | <i>coxI</i> | | <i>rrnL</i> | | <i>rrnS</i> | |
| | Female | Male | Female | Male | Female | Male | Count | GenBank IDs | Count | GenBank IDs | Count | GenBank IDs |
| <i>C. chione</i> | 4 | 6 | 0 | 0 | 0 | 0 | 1 | KF360089 | n/a | | n/a | |
| <i>Ensis siliqua minor</i> | 5 | 7 | 0 | 0 | 6 | 12 | 12 | KF360147 158 | n/a | | 8 | KF360166 173 |
| <i>Mercenaria mercenaria</i> | 11 | 10 | 9 | 7 | 0 | 0 | 13 | KF360121 133 | 7 | KF360159 165 | n/a | |
| <i>Meretrix lamarckii</i> | 13 | 7 | 0 | 0 | 12 | 8 | 12 | KF360109 120 | n/a | | 15 | KF360174 188 |
| <i>M. arenaria</i> | 10 | 10 | 0 | 0 | 0 | 0 | 13 | KF360134 146 | n/a | | n/a | |
| <i>Ruditapes decussatus</i> | 10 | 12 | 0 | 0 | 2 | 0 | 9 | KF360090 098 | n/a | | 2 | KF360189 190 |
| <i>V. verrucosa</i> | 6 | 6 | 0 | 0 | 0 | 0 | 10 | KF360099 108 | n/a | | n/a | |

sequences and 0.0041 ± 0.0020 among M ones, while it is 0.0459 ± 0.0126 between F and M clusters, nearly half the value of the respective nucleotide *p* distances (Table 3). The probability of rejecting the null hypothesis of strict neutrality was always not significant, regardless of the test/method used (Table 4).

Phylogenetic analysis

The complete alignment, after BMGE masking, was 400 bp (+1 0/1 coded indel character) long for *coxI* and 354 bp (+31 0/1 coded indel characters) long for *rrnS*, for a total of 51 operational taxonomic units (OTUs) \times 786 sites available for phylogenetic inference. GTR+G (Tavaré 1986) was selected as the best fitting molecular evolution model for *coxI*, while it was HKY85+G (Hasegawa et al. 1985) for *rrnS*. Both AIC and BF (Tables S4 and S5) tests ranked the four models in the same order, sharply favouring codon m3 over competitors: this is in good agreement with the methodological pipeline described in Plazzi and Passamonti (2010). As a consequence, we regard the tree obtained from the codon m3 analysis as our preferred phylogenetic tree computed for this study and it is shown in Fig. 3.

The tree has high node support values, with only two exceptions: (1) the family Veneridae is not recovered as monophyletic, due to the branch leading to the mastrid *Coelomacra antiquata* that makes it paraphyletic; (2) the subfamily Meretricinae has only weak posterior probability (PP) support (0.786), and therefore, its node has been collapsed. Conversely, subfamilies Tapetinae and Cyclininae are supported in our tree with PP 1.000; all genera and species are monophyletic ($0.996 < PP < 1.000$); the species *V. philippinarum* exhibits its expected sex specific distribution of DUI related sequences, F and M clusters being separated with PP 1.000. Veneridae are subdivided in two large clades: on one side, the topology is (Chioninae + Venerinae) + Tapetinae; on the other side, Cyclininae and Meretricinae cluster together. Within the species *M. lamarckii*, two main clades are splitted with PP 0.998: these correspond to F sequences and M sequences; the *M. lamarckii* sequence downloaded from GenBank (accession number NC 016174) clusters with F sequences. Conversely, within the genus *Cyclina*, the F sequence clusters with the M2 sequence of this species, while *C. sinensis* M1 is basal to both. Finally, posterior values of levels of selection are low (ω_1 0.0017; ω_2 0.0221; ω_3 0.0810), with a minimal vari

Table 3. *p* Distances for each species for each marker

| Species | <i>coxI</i> | | | <i>rrnL</i> | | | <i>rrnS</i> | | |
|------------------------------|--------------|--------------|---------------|--------------|--------------|--------------|--------------|--------------|---------------|
| | F | M | F/M | F | M | F/M | F | M | F/M |
| <i>Callista chione</i> | 0.0000 | 0.0000 | 0.0000 | | | | | | |
| | ± 0.0000 | ± 0.0000 | ± 0.0000 | | | | | | |
| <i>Ensis siliqua minor</i> | 0.0127 | 0.0225 | 0.0176 | | | | 0.0000 | 0.0026 | 0.0014 |
| | ± 0.0022 | ± 0.0026 | ± 0.0019 | | | | ± 0.0000 | ± 0.0008 | ± 0.0004 |
| <i>Mercenaria mercenaria</i> | 0.0049 | 0.0075 | 0.0063 | 0.0067 | 0.0043 | 0.0056 | | | |
| | ± 0.0014 | ± 0.0019 | ± 0.0012 | ± 0.0027 | ± 0.0021 | ± 0.0023 | | | |
| <i>Meretrix lamarckii</i> | 0.0028 | 0.0044 | 0.0980 | | | | 0.0046 | 0.0033 | 0.1168 |
| | ± 0.0009 | ± 0.0014 | ± 0.0095 | | | | ± 0.0012 | ± 0.0015 | ± 0.0128 |
| <i>Mya arenaria</i> | 0.0028 | 0.0039 | 0.0038 | | | | | | |
| | ± 0.0011 | ± 0.0013 | ± 0.0012 | | | | | | |
| <i>Ruditapes decussatus</i> | 0.0055 | 0.0111 | 0.0080 | | | | | | |
| | ± 0.0011 | ± 0.0021 | ± 0.0015 | | | | | | |
| <i>Venus verrucosa</i> | 0.0060 | 0.0036 | 0.0045 | | | | | | |
| | ± 0.0015 | ± 0.0012 | ± 0.0010 | | | | | | |

F, intrafemale divergence; M, intramale divergence; F/M, divergence between females and males.

Standard errors are given under the distance value. *Meretrix lamarckii* F/M comparisons, a compelling evidence for the presence of DUI in this species, are shown in bold.

Acknowledgements

We would like to thank Prof. Edoardo Turolla for providing specimens of *M. arenaria* and *R. decussatus* and Paolo Giulio Albano for his great help in species determination. We also would like to thank Anisa Ribani and Raoul Bonini for their invaluable support during the laboratory work. This work was financed by the University and Research Italian Ministry (MIUR PRIN09, grant number 2009NWXMX 002), and the 'Canziani Bequest' fund (University of Bologna, grant number A.31.CANZEL SEW). FP was financially supported by Fondazione del Monte di Bologna e Ravenna (grant number FdM/879, 2010). Thanks are also due to the editor and an anonymous reviewer, whose comments and criticisms greatly improved the original manuscript.

Riassunto

La ricerca dell'Eredità Uniparentale Doppia nei bivalvi eterodonti ed il suo rilevamento in *Meretrix lamarckii* (Veneridae: Meretricinae)

L'Eredità Uniparentale Doppia (DUI) è probabilmente la più significativa eccezione della normale eredità materna dei mitocondri e da essa discendono una serie di interessanti domande riguardo, tra l'altro, la funzione di questi organelli, la determinazione del sesso, lo sviluppo embrionale e tutte le possibili conseguenze evolutive. Al momento la DUI è stata trovata in poche specie di molluschi bivalvi, ma è necessario un maggiore sforzo di ricerca per ottenere un quadro più chiaro della sua distribuzione in questo gruppo, quadro che è necessario per trarre ogni conclusione ben suffragata sulla sua origine e sul suo significato evolutivo. Se la DUI abbia avuto una singola origine o se sia comparsa più volte è ancora una questione aperta e dibattuta. In questo lavoro abbiamo analizzato sette specie di bivalvi eterodonti e forniamo i dati per sostenere la presenza della DUI nel veneride *Meretrix lamarckii*.

References

*Reference citations are present in Supporting Information.

- Akaike H (1973) Information theory and an extension of the maximum likelihood principle. In: Petrox BN, Caski F (eds), Second International Symposium on Information Theory. Akademiai Kiado, Budapest, p 267.
- Ballard JWO, Kreitman M (1994) Unraveling selection in the mitochondrial genome of *Drosophila*. *Genetics* **138**:757–772.
- Ballard JWO, Kreitman M (1995) Is mitochondrial DNA a strictly neutral marker? *Trends Ecol Evol* **10**:485–488.
- Ballard JWO, Rand DM (2005) The population biology of mitochondrial DNA and its phylogenetic implications. *Annu Rev Ecol Evol Syst* **36**:621–642.
- Ballard JWO, Whitlock MC (2004) The incomplete natural history of mitochondria. *Mol Ecol* **13**:729–744.
- Bazin E, Glémin S, Galtier N (2006) Population size does not influence mitochondrial genetic diversity in animals. *Science* **312**:570–571.
- Boyle EE, Etter RJ (2013) Heteroplasmy in a deep sea protobranch bivalve suggests an ancient origin of doubly uniparental inheritance of mitochondria in Bivalvia. *Mar Biol* **160**:413–422.
- Breton S, Doucet Beaupré H, Stewart DT, Hoeh WR, Blier PU (2007) The unusual system of doubly uniparental inheritance of mtDNA: isn't one enough? *Trends Genet* **23**:465–474.
- Breton S, Doucet Beaupré H, Stewart DT, Piontkivska H, Karmakar M, Bogan AE, Blier PU, Hoeh WR (2009) Comparative mitochondrial genomics of freshwater mussels (Bivalvia: Unionoidea) with doubly uniparental inheritance of mtDNA: gender specific open reading frames and putative origins of replication. *Genetics* **183**:1575–1589.
- Cao L, Kenchington E, Zouros E (2004) Differential segregation patterns of sperm mitochondria in embryos of the blue mussel (*Mytilus edulis*). *Genetics* **166**:883–894.
- Cogswell AT, Kenchington E, Zouros E (2006) Segregation of sperm mitochondria of two and four cell embryos of the blue mussel *Mytilus edulis*: implications for the mechanism of doubly uniparental inheritance of mitochondrial DNA. *Genome* **49**:799–807.
- Crisuolo A, Gribaldo S (2010) BMGE (Block Mapping and Gathering with Entropy): a new software for selection of phylogenetic informative regions from multiple sequence alignments. *BMC Evol Biol* **10**:210.
- Curole JP, Kocher TD (2005) Evolution of a unique mitotype specific protein coding extension of the cytochrome c oxidase II gene in freshwater mussels (Bivalvia: Unionoidea). *J Mol Evol* **61**:381–389.
- Doucet Beaupré H, Breton S, Chapman EG, Blier PU, Bogan AE, Stewart DT, Hoeh WR (2010) Mitochondrial phylogenomics of the Bivalvia (Mollusca): searching for the origin and mitogenomic correlates of doubly uniparental inheritance of mtDNA. *BMC Evol Biol* **10**:50.
- *Folmer O, Black M, Hoeh WR, Lutz R, Vrijenhoek RC (1994) DNA primers for amplification of mitochondrial cytochrome c oxidase subunit I from diverse metazoan invertebrates. *Mol Mar Biol Biotechnol* **3**:294–299.
- Galtier N, Nabholz B, Glémin S, Hurst GDD (2009) Mitochondrial DNA as a marker of molecular diversity: a reappraisal. *Mol Ecol* **18**:4541–4550.
- Gelman A, Rubin DB (1992) Inference from iterative simulation using multiple sequences. *Stat Sci* **7**:457–511.
- Gerber AS, Loggins R, Kumar S, Dowling TE (2001) Does nonneutral evolution shape observed patterns of DNA variation in animal mitochondrial genomes? *Annu Rev Genet* **35**:539–566.
- Ghiselli F, Milani L, Passamonti M (2011) Strict sex specific mtDNA segregation in the germ line of the DUI species *Venerupis philippinarum* (Bivalvia: Veneridae). *Mol Biol Evol* **28**:949–961.
- Ghiselli F, Milani L, Guerra D, Chang PL, Breton S, Nuzhdin SV, Passamonti M (2013) Structure, transcription, and variability of metazoan mitochondrial genome: perspectives from an unusual mitochondrial inheritance system. *Genome Biol Evol* **5**:1535–1554.
- Gissi C, Iannelli F, Pesole G (2008) Evolution of the mitochondrial genome of Metazoa as exemplified by comparison of congeneric species. *Heredity* **101**:301–320.
- Goldman N, Yang Z (1994) A codon based model of nucleotide substitution for protein coding DNA sequences. *Mol Biol Evol* **11**:725–736.
- Hasegawa M, Kishino H, Yano T (1985) Dating of the human ape splitting by a molecular phylogenetics. *J Mol Evol* **22**:160–174.
- Hoeh WR, Stewart DT, Guttman SI (2002) High fidelity of mitochondrial genome transmission under the doubly uniparental mode of inheritance in freshwater mussels (Bivalvia: Unionoidea). *Evolution* **56**:2252–2261.
- Huson DH, Richter DC, Rausch C, DeZulian T, Franz M, Rupp R (2007) Dendroscope: an interactive viewer for large phylogenetic trees. *BMC Bioinformatics* **8**:460.
- Jobb G, von Haeseler A, Strimmer K (2004) Treefinder: a powerful graphical analysis environment for molecular phylogenetics. *BMC Evol Biol* **4**:18.
- Jordan GE, Piel WH (2008) PhyloWidget: web based visualizations for the tree of life. *Bioinformatics* **15**:1641–1642.
- Kass RE, Raftery AE (1995) Bayes factors. *J Am Stat Assoc* **90**:773–795.
- Katoh K, Toh H (2008) Improved accuracy of multiple ncRNA alignment by incorporating structural information into a MAFFT based framework. *BMC Bioinformatics* **9**:212.
- Katoh K, Misawa K, Kuma K, Miyata T (2002) MAFFT: a novel method for rapid multiple sequence alignment based on fast Fourier transform. *Nucleic Acids Res* **30**:3059–3066.
- Katoh K, Kuma K, Toh H, Miyata T (2005) MAFFT version 5: improvement in accuracy of multiple sequence alignment. *Nucleic Acids Res* **33**:511–518.
- Librado P, Rozas J (2009) DnaSP v5: a software for comprehensive analysis of DNA polymorphism data. *Bioinformatics* **25**:1451–1452.
- Lis JT, Schleif R (1975) Size fractionation of double stranded DNA by precipitation with polyethylene glycol. *Nucleic Acid Res* **2**:383–389.
- *Matsumoto M (2003) Phylogenetic analysis of the subclass Pteriomorpha (Bivalvia) from mtDNA COI sequences. *Mol Phylogenet Evol* **27**:429–440.
- McDonald JH, Kreitman M (1991) Adaptive protein evolution at the *Adh* locus in *Drosophila*. *Nature* **351**:652–654.
- Milani L, Ghiselli F, Maurizi MG, Passamonti M (2011) Doubly uniparental inheritance of mitochondria as a model system for studying germ line formation. *PLoS One* **6**:e28194.
- Milani L, Ghiselli F, Passamonti M (2012) Sex linked mitochondrial behavior during early embryo development in *Ruditapes philippinarum* (Bivalvia Veneridae) a species with the Doubly Uniparental Inheritance (DUI) of mitochondria. *J Exp Zool B Mol Dev Evol* **318**:182–189.
- Milani L, Ghiselli F, Guerra D, Breton S, Passamonti M (2013) A comparative analysis of mitochondrial orphans: new clues on their origin and role in species with Doubly Uniparental Inheritance of mitochondria. *Genome Biol Evol* **5**:1408–1434.

- Mizi A, Zouros E, Moschonas N, Rodakis GC (2005) The complete maternal and paternal mitochondrial genomes of the mediterranean mussel *Mytilus galloprovincialis*: implications for the Doubly Uniparental Inheritance mode of mtDNA. *Mol Biol Evol* **22**:952–967.
- Muse SV, Gaut BS (1994) A likelihood approach for comparing synonymous and nonsynonymous substitution rates, with application to the chloroplast genome. *Mol Biol Evol* **11**:715–724.
- Nei M, Kumar S (2000) *Molecular Evolution and Phylogenetics*. Oxford University Press, New York.
- Nielsen R, Yang Z (1998) Likelihood models for detecting positively selected amino acids sites and applications to the HIV-1 envelope gene. *Genetics* **148**:929–936.
- Obata M, Komaru A (2005) Specific location of sperm mitochondria in mussel *Mytilus galloprovincialis* zygotes stained by MitoTracker. *Dev Growth Differ* **47**:255–263.
- Obata M, Shimizu M, Sano N, Komaru A (2008) Maternal inheritance of mitochondrial DNA (mtDNA) in the Pacific oyster (*Crassostrea gigas*): a preliminary study using mtDNA sequence analysis with evidence of random distribution of MitoTracker stained sperm mitochondria in fertilized eggs. *Zool Sci* **25**:248–254.
- *Palumbi SR, Martin A, Romano S, McMillan WO, Stice L, Grabowski G (1996) *The Simple fool's Guide to PCR*. Kewalo Marine Laboratory and University of Hawaii, Hawaii.
- Parmakelis A, Kotsakiozi P, Rand DM (2013) Animal mitochondria, positive selection and Cyto nuclear coevolution: insights from Pulmonates. *PLoS One* **8**:e61970.
- Passamonti M (2007) An unusual case of gender associated mitochondrial DNA heteroplasmy: the mytilid *Musculista senhousia* (Mollusca Bivalvia). *BMC Evol Biol* **7**(Suppl. 2):S7.
- Passamonti M, Ghiselli F (2009) Doubly Uniparental Inheritance: two mitochondrial genomes, one precious model for organelle DNA inheritance and evolution. *DNA Cell Biol* **28**:1–10.
- Passamonti M, Scali V (2001) Gender associated mitochondrial DNA heteroplasmy in the venerid clam *Tapes philippinarum* (Mollusca Bivalvia). *Curr Genet* **39**:117–124.
- Passamonti M, Boore JL, Scali V (2003) Molecular evolution and recombination in gender associated mitochondrial DNAs of the Manila clam *Tapes philippinarum*. *Genetics* **164**:603–611.
- Passamonti M, Ricci A, Milani L, Ghiselli F (2011) Mitochondrial genomes and Doubly Uniparental Inheritance: new insights from *Musculista senhousia* sex linked mitochondrial DNAs (Bivalvia Mytilidae). *BMC Genomics* **12**:442.
- Plazzi F, Passamonti M (2010) Towards a molecular phylogeny of Mollusks: Bivalves' early evolution as revealed by mitochondrial genes. *Mol Phylogenet Evol* **57**:641–657.
- Plazzi F, Ceregato A, Taviani M, Passamonti M (2011) A Molecular phylogeny of bivalve Mollusks: ancient radiations and divergences as revealed by mitochondrial genes. *PLoS One* **6**:e27147.
- Plazzi F, Ribani A, Passamonti M (2013) The complete mitochondrial genome of *Solemya velum* (Mollusca: Bivalvia) and its relationships with Conchifera. *BMC Genomics* **14**:409.
- Pont Kingdon G, Okada NA, Macfarlane JL, Beagley CT, Watkins Sims CD, Cavalier Smith T, Clark Walker GD, Wolstenholme DR (1998) Mitochondrial DNA of the coral *Sarcophyton glaucum* contains a gene for a homologue bacterial MutS: a possible case of gene transfer from the nucleus to the mitochondrion. *J Mol Evol* **46**:419–431.
- Ronquist F, Teslenko M, van der Mark P, Ayres D, Darling A, Höhna S, Larget B, Liu L, Suchard MA, Huelsenbeck JP (2011) MrBayes 3.2: Efficient Bayesian phylogenetic inference and model choice across a large model space. *Syst Biol* **61**:539–542.
- Sambrook J, Russell DW (2006) Purification of nucleic acids by extraction with phenol:chloroform. *CSH Protoc* **2006**:pii: pdb.prot4455.
- Shao Z, Shannon G, Chaga OY, Lavrov DV (2006) Mitochondrial genome of the moon jelly *Aurelia aurita* (Cnidaria, Scyphozoa): a linear DNA molecule encoding a putative DNA dependant DNA polymerase. *Gene* **381**:92–101.
- Simmons MP, Ochoterena H (2000) Gaps as characters in sequence based phylogenetic analyses. *Syst Biol* **49**:369–381.
- *Simon C, Buckley TR, Frati F, Stewart JB, Beckenbach AT (2006) Incorporating molecular evolution into phylogenetic analysis, and a new compilation of conserved polymerase chain reaction primers for animal mitochondrial DNA. *Annu Rev Ecol Evol Syst* **37**:545–579.
- Skibinski DOF, Gallagher C, Beynon CM (1994a) Mitochondrial DNA inheritance. *Nature* **368**:817–818.
- Skibinski DOF, Gallagher C, Beynon CM (1994b) Sex limited mitochondrial DNA transmission in the marine mussel *Mytilus edulis*. *Genetics* **138**:801–809.
- Tamura K, Peterson D, Peterson N, Stecher G, Nei M, Kumar S (2011) MEGA5: molecular evolutionary genetics analysis using maximum likelihood, evolutionary distance, and maximum parsimony methods. *Mol Biol Evol* **28**:2731–2739.
- Tanabe AS (2007) KAKUSAN: a computer program to automate the selection of a nucleotide substitution model and the configuration of a mixed model on multilocus data. *Mol Ecol Notes* **7**:962–964.
- Tanabe AS (2011) Kakusan4 and Aminosan: two programs for comparing nonpartitioned, proportional and separate models for combined molecular phylogenetic analyses of multilocus sequence data. *Mol Ecol Resour* **11**:914–921.
- Tavaré S (1986) Some probabilistic and statistical problems on the analysis of DNA sequences. *Lect Mathemat Life Sci* **17**:57–86.
- Theologidis I, Fodelianakis S, Gaspar MB, Zouros E (2008) Doubly uniparental inheritance (DUI) of mitochondrial DNA in *Donax trunculus* (Bivalvia: Donacidae) and the problem of its sporadic detection in Bivalvia. *Evolution* **62**:959–970.
- Walker JM, Curole JP, Wade DE, Chapman EG, Bogan AE, Watters GT, Hoeh WR (2006) Taxonomic distribution and phylogenetic utility of gender-associated mitochondrial genomes in the Unionoida (Bivalvia). *Malacologia* **48**:265–282.
- Wang H, Zhang S, Xiao G, Liu B (2011) Complete mtDNA of the *Meretrix lamarckii* (Bivalvia: Veneridae) and molecular identification of suspected *M. lamarckii* based on the whole mitochondrial genome. *Mar Genomics* **4**:263–271.
- Young ND, Healy J (2003) GapCoder automates the use of indel characters in phylogenetic analysis. *BMC Bioinformatics* **4**:6.
- Zbawicka M, Burzynski A, Skibinski D, Wenne R (2010) Scottish *Mytilus trossulus* mussels retain ancestral mitochondrial DNA: complete sequences of male and female mtDNA genomes. *Gene* **456**:45–53.
- Zouros E (1994a) An unusual type of mitochondrial DNA inheritance in the blue mussel *Mytilus*. *Proc Natl Acad Sci USA* **91**:7463–7467.
- Zouros E (1994b) Mitochondrial DNA inheritance. *Reply. Nature* **368**:818.
- Zouros E (2013) Biparental inheritance through uniparental transmission: the Doubly Uniparental Inheritance (DUI) of mitochondrial DNA. *Evol Biol* **40**:1–31.

Supporting Information

Additional Supporting Information may be found in the online version of this article:

Table S1. Individuals analysed for this study by species and sex. Format: PDF.

Table S2. Primers used in this study for routine PCR amplifications. Working condition column lists annealing conditions of each primer pair. Format: PDF.

Table S3. Lengths of amplified fragments by species and gene. l_{\min} , minimum length; l_{\max} , maximum length; align, alignment length. Format: PDF.

Table S4. Akaike Information Criterion. LnL, natural logarithm of likelihood; K, free parameters; AIC, Akaike Information Criterion. The lower the AIC value, the better the model fits to the data. Format: PDF.

Table S5. Bayes Factor. For evolutionary model nomenclature, see text. A value >10 is a very strong evidence favouring the left model over the above model. Format: PDF.

Dataset S1. Alignment of *cox1* *Meretrix lamarckii* haplotypes. FASTA built with MEGA 5.03 (Tamura et al. 2011).

Dataset S2. Alignment of *rns* *Meretrix lamarckii* haplotypes. FASTA built with MEGA 5.03 (Tamura et al. 2011).