

Alma Mater Studiorum Università di Bologna
Archivio istituzionale della ricerca

A wearable EEG-based drowsiness detection system with blink duration and alpha waves analysis

This is the final peer-reviewed author's accepted manuscript (postprint) of the following publication:

Published Version:

A wearable EEG-based drowsiness detection system with blink duration and alpha waves analysis / Kartsch, V.; Benatti, S.; Rossi, D.; Benini, L.. - ELETTRONICO. - (2017), pp. 8008338.251-8008338.254. (Intervento presentato al convegno 8th International IEEE EMBS Conference on Neural Engineering, NER 2017 tenutosi a Regal International East Asia Hotel, Shanghai, China nel 25-28 May 2017) [10.1109/NER.2017.8008338].

Availability:

This version is available at: <https://hdl.handle.net/11585/609272> since: 2019-04-01

Published:

DOI: <http://doi.org/10.1109/NER.2017.8008338>

Terms of use:

Some rights reserved. The terms and conditions for the reuse of this version of the manuscript are specified in the publishing policy. For all terms of use and more information see the publisher's website.

This item was downloaded from IRIS Università di Bologna (<https://cris.unibo.it/>).
When citing, please refer to the published version.

(Article begins on next page)

This is the post peer-review accepted manuscript of:

Kartsch, Victor, Simone Benatti, Davide Rossi, and Luca Benini. "A wearable EEG-based drowsiness detection system with blink duration and alpha waves analysis." In 2017 8th International IEEE/EMBS Conference on Neural Engineering (NER), pp. 251-254. IEEE, 2017.

The published version is available online at:

<https://doi.org/10.1109/NER.2017.8008338>

© 2017 IEEE. Personal use of this material is permitted. Permission from IEEE must be obtained for all other uses, in any current or future media, including reprinting/republishing this material for advertising or promotional purposes, creating new collective works, for resale or redistribution to servers or lists, or reuse of any copyrighted component of this work in other works.

A Wearable EEG-based Drowsiness Detection System with Blink Duration and Alpha Waves Analysis

V. Kartsch*, S. Benatti*, D. Rossi*, L. Benini*[‡]

*DEI, University of Bologna, Italy. Email: {victorjavier.kartsch, simone.benatti, davide.rossi, luca.benini}@unibo.it

[‡]Integrated System Laboratory, ETHZ, Zurich, Switzerland. Email: lbenini@iis.ee.ethz.ch

Abstract—Drowsiness is one of the most prevalent causes of accidents in mining, driving and industrial activities carrying high personal risks and economic costs. For this reason, automatic detection of drowsiness is becoming an important application, and it is being integrated in a large variety of wearable and deeply embedded systems. Relevant effort has been spent in the past to quantify the drowsiness level from behavioral features exploiting eye tracking systems, dermal sensors or steering wheel movements. On the other hand, all these approaches lack of generality, they are highly intrusive and can only be applied in specific circumstances. A promising alternative approach is based on the extraction and processing of physiological features from the EEG using Brain Computer Interfaces (BCI). This work describes a wearable system capable of detecting drowsiness conditions and emitting alarms using only EEG signals, with three levels of alarm based on the blink duration and on the spectral power of alpha waves. This implementation aims to replace or complement the use of cameras and other sensors, extracting drowsiness information exploiting both behavioral and physiological features from EEG sensors only. The system was validated with 7 test subjects achieving detection accuracy of 85%, while being much more lightweight and compact than other state of the art methods.

I. INTRODUCTION

Accidents involving human-driven vehicles are one of the main safety challenges in several fields, such as transportation, automotive, and manufacturing, causing more than 1500 fatalities and 71,000 injuries in the USA alone [1]. Fatigue has emerged as one of the most prevalent causes of earth-moving equipment accidents within the mining industry (large vehicles such as bulldozers and excavators), public transportation (buses, trains, planes, etc) and manufacturing industry (production line, crane operations, industrial soldering, etc.) [2]. During the last years, technology enhancement has enabled several techniques for addressing fatigue monitoring and drowsiness detection in deeply embedded systems. The automotive industry is exploring solutions based on in-vehicle sensors to monitor and prevent dangerous situations, making the vehicles *smarter*. For instance, lane detector systems [3] or semi-autonomous drive supports [4] have been proposed as indirect indicators of the driver's level of fatigue by scanning driving profile changes.

Other systems focus on the physical behavior of the driver to determine drowsiness level, for example, analyzing eye movements. The studies carried in [5] indicate the correlation between eye parameters (frequency and duration of blinks) with drowsy conditions. According to [6], the blink duration is increased when drowsiness is appearing and the test subject can be cataloged as *Drowsy* if the duration is longer than 500 ms. Also, in [7] and [8], a long blink is used as an indicator for micro-sleeps. Another important eye parameter

is PERCLOS (percent of time with eyelid closed at least 80%, measured in a minute-long time window). The extraction all these parameters is usually done exploiting high-resolution cameras. The inconvenience of these computer-vision methods resides on the high computational power and complex hardware required to process the images, without forgetting that these systems just work in specific angle and illumination conditions. Also, portability is difficult since the cameras are fixed and require careful tuning of the position [9].

The analysis of physiological features extracted by the EEG is proposed to overcome these problems. Indeed, it has been demonstrated that the accuracy of driver drowsiness detection by using physiological signals is very high compared to other methods such as vehicle-based measures [10]. Different *rythms* (Alpha, Beta, Theta, Gamma) can be separated and used to determine drowsiness conditions. However, the variability of the brainwaves levels among subjects suggests that a purely physiological analysis is not sufficient to generalize the drowsiness detection [11], [12].

Taking this in consideration, this work introduces a system capable to provide drowsiness alerts using only the information coming from the EEG signals, combining physiological with behavioural features analysis, significantly improving the generality, accuracy and compactness with respect to previous solutions. The proposed approach relies on three different level of alarms. The first level is extracted from the EEG eye-blink artifacts, taking in consideration that the increase of the blink duration have been proven to be a good indicator of drowsiness [13][14]. The second level is coming from the presence of small alpha waves bursts that are present in drowsy conditions as proven by previous investigations [15]. The third level, also related to the presence of alpha waves, detects the complete closure of the eyes [16] by considering the constant presence of alpha waves for a given time.

Other more complex techniques are currently investigated in laboratory conditions, mostly in offline mode, achieving accuracy between 80-90% [17][18]. The inconvenience of these techniques resides on the computational power required. Instead, the simplicity of the proposed implementation, where multiple parameter are extracted only from EEG, allows the correct identification of the drowsiness with 85% of accuracy, comparable with the mentioned methods while using a fully wearable device. Thanks to these features, the proposed system can be either used as stand-alone component or in conjunction with cameras or other methods to push energy efficiency and accuracy higher.

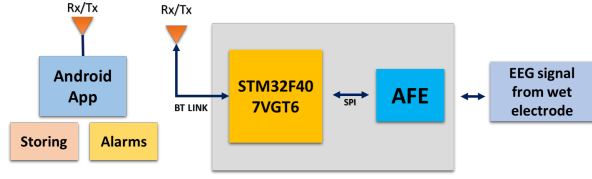


Fig. 1. Hardware Block Diagram

II. SYSTEM SETUP

The technique for drowsiness detection presented in this work is based on the behavioral and physiological study of the subjects through the use of EEG signals. To evaluate the behavior of the EEG signals and the extraction algorithms, raw data from three test subjects was taken. After this, the working principle of each level of the algorithm was evaluated separately for calibration using the hardware presented on Fig. 1. The final alarm system was validated with 7 test subjects. In this section we will detail the 3-Level Alarm systems, discussing at each level the selection of the corresponding feature and detection method, to finally expose the embedded implementation.

A. 3-Level Alarm System

The selection of the features is performed considering the information provided by previous research projects where large number of test subjects were involved [19]. The following sections present the three levels of alarms, explaining in detail the selection and extraction of the corresponding feature. In this regard, current systems can have binary [19] or multiple [1] indicators of drowsiness. The selection of three level of alarms balances this to keep low computational complexity, still providing clear indicators of increasing drowsiness as the same as extending the range of detection to overcome inter-individual differences.

LEVEL 1 - Blink duration (BD) Alert:

The estimation of the blinking time is done by analyzing the EEG signal in the frequency domain, since it has more easily identifiable patterns than in the time [20], where only the 1 Hz spectrum power is of interest since it gives the most significant difference between open/close events during a blink. For each blink a presence of two peaks is highlighted (high and low) in correspondence to the opening and closure of the eyelids (Figure 2). The blinking time is calculated considering the distance and difference in amplitude between the two peaks. The algorithm detects these peaks and calculates the time value.

This approach relies on the calculation of the Short Time Fast Fourier Transform (FFT length is 512 samples with Hamming window at 500Hz of sample rate). During a series of blinks, it is possible to see the presence of a high and a low peak for each blink, in correspondence to the potential changes induced by the eyelid movements, due the drifted DC to the subsequent frequencies. Another observed parameter is the amplitude of the two peaks in between an eye blink.

To quantify these parameters, EEG signals containing short blinks (**SB**)(< 400ms), medium blinks (**MB**)(< 650ms), large blinks (**LB**)(> 650ms) and eyes open while moving the eyeball (**NB**) were evaluated. The results of the evaluation are presented in the table I. This experiment confirmed that the amplitude increases for longer blinks. Although the algorithm uses the time difference to determinate the duration, the

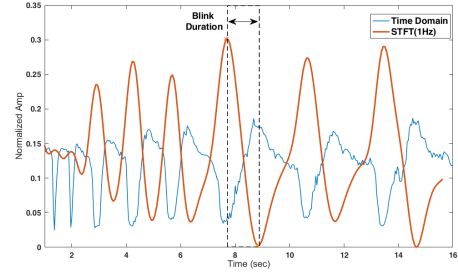


Fig. 2. Blinks in time and frequency domain (STFT at 1Hz)

amplitude difference served as a filter to eliminate artifacts (fast eye movements, saccades, etc), since they have smaller amplitude than the regular-long blinks.

For the integration with the final algorithm, the extracted blinking time is evaluated in a window of 20 seconds, as suggested by previous investigations [19]. The time of every blink occurrence in this window is then summed and averaged. The alarm is triggered only if the average time goes over a given threshold (>500ms [6]). Only the peaks with a normalized amplitude difference greater than 0.02 are counted. The blink duration serves as a mechanism to provide an early alert before the sudden sleep occurs. This is the motivation for leaving this at the first level on the alert hierarchy.

LEVEL 2 - Cumulative Alpha Waves (CAW) Alert:

This level detects small bursts of alpha waves (7.5–13Hz) caused by drowsy conditions. The detection of the alpha waves is done by using a threshold detector. This is applicable since the alpha waves have a typical amplitude higher than other brain waves [16].

Two features were compared for this purpose. The former is obtained in the time domain by filtering the alpha waves from the other signals. After that, the envelope (Root Mean Square Envelope) of the resulting signal is calculated. The latter is extracted in the frequency domain by calculating the Power Spectral Density (PSD) of the alpha waves. Finally, the event detection is done comparing the extracted features with given thresholds tuned up by studying the produced alpha waves while open/close the eyes. This evaluation also decreases the inter-individual differences in term of AW amplitude. Table II presents the values of sensitivity and specificity for the optimal threshold values in both approaches. The PSD method was finally used for the embedded implementation since it shows better performance. This allows also to reduce computational load since the PSD is already calculated in the previous level. Finally, in order to decrease the effects of noise and artifacts using PSD, the algorithm was adapted to detect alpha waves only if no other smaller frequencies (0-7 Hz) have energy above the selected threshold.

TABLE I
NORMALIZED AMP. DIFFERENCE FOR DIFFERENT BLINKS AND
DETECTION ACCURACY

TSn	SB	MB	LB	NB	Accuracy* %
TS1	0.03	0.168	0.308	0.01	92
TS2	0.03	0.168	0.290	0.009	93
TS3	0.03	0.167	0.302	0.01	87
Avg. time	0.367ms	0.61ms	1.174ms	-	-

*The accuracy was calculated taken into consideration the difference between the measured value and the definition of blink duration for EOG [21].

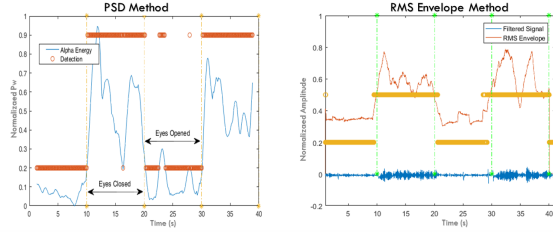


Fig. 3. PSD and RMS method of extraction

TABLE II
COMPARISON OF THE RMS AND PSD METHOD FOR ALPHA WAVES
DETECTION USING OPTIMAL THRESHOLD

Method	Threshold	Sensitivity	Specificity
RMS	0.4	0.882	0.934
PSD	0.2	0.900	0.997

The metrics used here were selected considering their common use in other investigations [22] [23].

For the integration with the final algorithm, as previously mentioned, the time of presence of the alpha waves is captured and accumulated in a 20 second window. The cumulative occurrence of alpha waves for more than 5 second is considered as an indicator of a intermediate drowsy state, following the standards given by the Objective Sleepiness Scoring (OSS)[15]. This gives the motivation to locate it at the second level.

LEVEL 3 - Alpha waves 3 seconds(AW3S) Alert: The presence of alpha waves for more than 3 seconds is detected here, since it indicates the complete closure of the eyes [16], caused by a sudden sleep or total loss of attention. The alpha waves are extracted using the same methodology presented at the level 2 but without considering any window for emitting the alarm, aiming to provide a shortcut for a fast notification. Given the risk that represents this behavior, it was located at the maximum level. Figure 4 shows a block diagram that summarizes the algorithm implementation.

B. Embedded Architecture

The proposed setup is designed to optimize the trade-off between performance and power consumption, since the target is the embedded implementation of a wearable BCI. A block diagram of the proposed setup is presented in Fig. 1. A low power STM32F407 ARM Cortex M4 microcontroller, an ADS1298 (8Ch, 24-bit, 0.25-32KHz S/r, PGA:1-12) delta-sigma ADC designed for bio-medical acquisition [24] and a Bluetooth module are integrated on a single board, as presented in [25]. The MCU acquires data from the ADC through the SPI peripheral, using a state machine structure that collects and process the data containing the sampled values of 2 wet electrodes (Fpz - Oz) connected to one differential channel. Once finished, it executes the detection algorithm and manages the system. The code was implemented in C language using the STM32 Workbench IDE. The calculation of the PSD is done making use of the CMSIS-

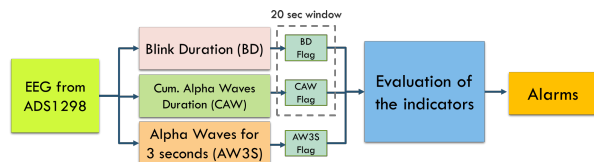


Fig. 4. Algorithm Block Diagram

DSP libraries provided by ARM, where the FFT calculation is performed after the acquisition of the required 512 samples. Later, the magnitude of the FFT vector is calculated and used by the feature extraction algorithm at the corresponding frequency of interest (1 and 7.5 – 13Hz). The memory footprint required for the execution of the complete algorithm is less than 10kB. Finally, it is possible to stream the outputs to an external device to plot and store the results using a BT module connected via UART to the microcontroller.

III. EXPERIMENTAL RESULTS

A. System Validation

The behavioral and physiological features used on this work allowed the validation of the system using simulated conditions. This approach has the advantage of not exposing the subject to dangerous conditions and has been used extensively in other researches [28][26]. For this purpose, 7 test subjects have participated. The test was performed in the late night, when the test subjects were already tired and more prone to drowsy conditions. Each test subject simulated the different alarm conditions 5 times. To assess the first and the second levels of alarm, the test subject was asked to maintain the alarm condition for the duration of the evaluation window (20 sec). If the condition was not detected (threshold not reached) it was categorized as a fail. In the case of the third level, the test was considered a fail if the detection was not done within 5 seconds. Figure 5 shows the results for each level of alarm where the average accuracy is equal to 85%. From this, it is also possible to see that the Levels 2 and 3 have lower values of accuracy. Many factors can be attributed to this situation (environmental noise, artifacts, individual differences). A test with a larger number of test subjects, planned for a future research, can clarify this behavior.

In order to assess the efficiency of the final hardware-software implementation, energy consumption parameters were extracted while the device was running. Due to the low duty cycle of the microcontroller (10%), energy saving was possible by putting the device in sleep mode when possible. Table IV summarizes the results. Similarly, the prediction time was extracted. The alarm outputs were available 0.7 ms after the reception of the required samples. These results were achieved thanks to the software architecture presented on II-B, where all the features are extracted only from the PSD.

Table III presents a comparison between the proposed implementation and others the State of Art (SoA) models. Most of the new implementations use bench-top PC to evaluate the drowsiness indicators since they require more computational effort, like in the case of Neural Networks

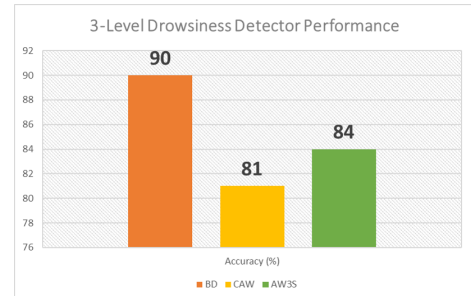


Fig. 5. Detection accuracy of the different levels

TABLE III
COMPARISON BETWEEN THE DIFFERENT SoA SYSTEMS AND THE CURRENT IMPLEMENTATION

Author	Method	Advantage	Disadvantage	Accuracy	Platform	Intrusive %
[22]	EEG, Pw variations	No training, online	Only one feature	85	NS	NO
[17]	EEG, Neural Network	Single EEG Channel	Training, Offline	83	L. Computer	-
[18]	EOG, Neural Network	Automatic Training	Complex Arq, Offline	73	L. Computer	YES
[26]	Cam, Eye parameters	Real Time	Fixed, not wearable, Comp. Hungry	94	NS	NO
[27]	NIRS, EEG, Alpha Pw	Portable	Noise, Redundant Measurements	88-65	Microcontroller	NO
This Imp	EEG, Blink Dur and Alpha Pw	Mult. features, Reduced. HW, No training	Noise, Wet electrodes	90-81	Microcontroller	NO

[17]. This approach cannot be implemented on embedded systems due to the high computational requirements. The proposed solution overcomes these problems since it leverages much simpler algorithms exploiting behavioral parameters. Many of the presented approaches are obtained in laboratory conditions in offline mode [17][18][29], while the proposed implementation is fully online, wearable and tested in a real environment. Moreover, by using the current technique for the blinking duration is possible to replace or complement computer vision methods [26][9] with a significant reduction in energy consumption. Concerning other wearable approaches, [27] introduced a low power device capable to operate for 5 hours with a 200mAh battery. The system fuses EEG signals and NIRS classification to measure only brain activity not exploiting behavioral features. Our implementation, thanks to the extraction of behavioral and physiological features only from the EEG signal, is capable to obtain a better accuracy with a simpler algorithm and fully portable hardware, achieving 42% more energy efficiency.

Still, some improvement can be done in terms of electrode interface. Wet electrodes may not be suitable for day-to-day use. Also, noise reduction is an important issue, since EEG signals can be easily distorted. Recent developments have proposed earplugs for EEG detection [30] as well as small flexible dry electrodes [31] to overcome these issues. Future research will focus on these issues and on improving algorithmic robustness.

IV. CONCLUSIONS

This work presents a drowsiness detector for a minimally invasive wearable system based on a single EEG channel. The combination of behavioral and physiological indicators allows the design of an energy efficient algorithm, that reaches 85% accuracy in drowsiness detection, with a performance comparable to the SoA camera based systems. Furthermore, as opposed to ASIC solutions, the system is fully implemented using a Commercial Off The Shelf (COTS) microcontroller, hence it maintains the versatility of programmable devices combined to the low power consumption of embedded platforms, achieving 7.1 hs of operation with a 200mAh battery. Future works will target sensor fusion techniques to further improve accuracy and the optimization of the sensor interface.

ACKNOWLEDGMENT

The research contribution presented in this paper has been supported by the European project EuroCPS (grant n. 644090).

TABLE IV
POWER CONSUMPTION OF THE DEVICE

Device	Frequency(Mhz)	Power(mW)
ADS1298	2.048	12.5
STM32F407vgt6	168	79.2

REFERENCES

- [1] Q. Ji *et al.*, "Real-time nonintrusive monitoring and prediction of driver fatigue," *Transactions on vehicular technology*, 2004.
- [2] "Guide for managing the risk of fatigue at work."
- [3] MOBILEYE, <http://www.mobileye.com>, 2016.
- [4] Mercedes-Benz, <https://www.mbusa.com/>, 2016.
- [5] G. Borghini *et al.*, "Measuring neurophysiological signals in aircraft pilots and car drivers for the assessment of mental workload, fatigue and drowsiness," *Neuroscience Biobehavioral Reviews*, 2014.
- [6] R. Schleicher *et al.*, "Blinks and saccades as indicators of fatigue in sleepiness warnings: looking tired?" *Ergonomics*, 2008.
- [7] M. Johns *et al.*, "The amplitude-velocity ratio of blinks: a new method for monitoring drowsiness," *Sleep*, vol. 26, p. A51, 2003.
- [8] Johns *et al.*, "Monitoring eye and eyelid movements by infrared reflectance oculography to measure drowsiness in drivers," *Somnologie*, 2007.
- [9] M. Flores, *et al.*, "Driver drowsiness warning system using visual information for both diurnal and nocturnal illumination conditions," *EURASIP*, vol. 2010, no. 1, p. 438205, 2010.
- [10] A. Sahayadhas *et al.*, "Detecting driver drowsiness based on sensors: A review," *Sensors*, vol. 12, no. 12, p. 16937, 2012.
- [11] H. V. Huikuri, *et al.*, "Heart rate variability in systemic hypertension," *The American journal of cardiology*, pp. 1073–1077, 1996.
- [12] B. H. Friedman *et al.*, "Autonomic balance revisited: panic anxiety and heart rate variability," *Journal of psychosomatic research*, 1998.
- [13] P. P. Caffier *et al.*, "Experimental evaluation of eye-blink parameters as a drowsiness measure," *European Journal of Applied Physiology*, 2003.
- [14] K. Sugiyama *et al.*, "Method of detecting drowsiness level by utilizing blinking duration," *JSAE Review*, vol. 17, no. 2, pp. 159 – 163, 1996.
- [15] A. Muzet *et al.*, "Awake pilot study no. 2: Testing steering grip sensor measures," *CEPA, Tech. Rep. IST-2000-28062*, 2003.
- [16] I. William O. Tatum, *Handbook of EEG Interpretation, Second Edition*. Springer Publishing Company, 2014.
- [17] A. G. Correa *et al.*, "Automatic detection of drowsiness in {EEG} records based on multimodal analysis," *Medical Engineering Physics*, 2014.
- [18] X. Zhu *et al.*, "Eeg-based drowsiness detection using convolutional neural networks," in *IJCNN*, July 2014, pp. 128–134.
- [19] A. Picot *et al.*, "Drowsiness detection based on visual signs: blinking analysis based on high frame rate video," in *2010 IEEE Instrumentation Measurement Technology Conference Proceedings*, 2010.
- [20] S. M. A. Delorme, T. Sejnowski, "Enhanced detection of artifacts in {EEG} data using higher-order statistics and independent component analysis," *NeuroImage*, vol. 34, no. 4, pp. 1443 – 1449, 2007.
- [21] A. Anund *et al.*, "Pilot 15—report: Vti," *Swedish National Road and Transport Research Institute*, 2004.
- [22] A. Picot *et al.*, "On-line automatic detection of driver drowsiness using a single electroencephalographic channel," in *EMBC*, Aug 2008.
- [23] J. Park *et al.*, "Wireless dry eeg for drowsiness detection," in *EMBC*, Aug 2011, pp. 3298–3301.
- [24] Y. Zhang *et al.*, "12-lead eeg data acquisition system based on ads1298," *Procedia Engineering*, vol. 29, pp. 2103 – 2108, 2012.
- [25] M. Tomasin, S. Benatti, B. Milosevic, E. Farella, and L. Benini, "Power line interference removal for high-quality continuous biosignal monitoring with low-power wearable devices," *IEEE Sensors Journal*, 2016.
- [26] A. Rahman *et al.*, "Real time drowsiness detection using eye blink monitoring," in *NSEC*. IEEE, 2015, pp. 1–7.
- [27] U. Ha *et al.*, "A multimodal drowsiness monitoring ear-module system with closed-loop real-time alarm," in *BioCAS*, Oct 2016.
- [28] A. Sahayadhas *et al.*, "Detecting driver drowsiness based on sensors: a review," *Sensors*, vol. 12, no. 12, pp. 16937–16953, 2012.
- [29] T. Silveira *et al.*, "Automated drowsiness detection through wavelet packet analysis of a single {EEG} channel," *Expert Systems with Applications*.
- [30] K. B. Mikkelsen, S. L. Kappel, D. P. Mandic, and P. Kidmose, "Eeg recorded from the ear: Characterizing the ear-eeg method," *Frontiers in Neuroscience*, vol. 9, p. 438, 2015.
- [31] H. L. Peng *et al.*, "Polyethylene-based flexible dry electrode for biopotential recording," *Sensors and Actuators B: Chemical*.