



OPEN ACCESS

ORIGINAL ARTICLE

## Randomised controlled trial of mesalazine in IBS

Giovanni Barbara,<sup>1</sup> Cesare Cremon,<sup>1</sup> Vito Annesse,<sup>2</sup> Guido Basilisco,<sup>3</sup> Franco Bazzoli,<sup>4</sup> Massimo Bellini,<sup>5</sup> Antonio Benedetti,<sup>6</sup> Luigi Benini,<sup>7</sup> Fabrizio Bossa,<sup>8</sup> Paola Buldrini,<sup>9</sup> Michele Cicala,<sup>10</sup> Rosario Cuomo,<sup>11</sup> Bastianello Germanà,<sup>12</sup> Paola Molteni,<sup>13</sup> Matteo Neri,<sup>14</sup> Marcello Rodi,<sup>15</sup> Alfredo Saggioro,<sup>16</sup> Maria Lia Scribano,<sup>17</sup> Maurizio Vecchi,<sup>18</sup> Giorgio Zoli,<sup>19</sup> Roberto Corinaldesi,<sup>1</sup> Vincenzo Stanghellini<sup>1</sup>

► Additional material is published online only. To view please visit the journal online (<http://dx.doi.org/10.1136/gutjnl-2014-308188>).

For numbered affiliations see end of article.

**Correspondence to**

Dr Giovanni Barbara, Department of Medical and Surgical Sciences, St. Orsola-Malpighi Hospital—Building # 5, Via Massarenti, Bologna 9-I-40138, Italy; [giovanni.barbara@unibo.it](mailto:giovanni.barbara@unibo.it)

Received 2 August 2014

Revised 18 November 2014

Accepted 20 November 2014

Published Online First

22 December 2014



Open Access  
Scan to access more  
free content

**ABSTRACT**

**Objective** Low-grade intestinal inflammation plays a role in the pathophysiology of IBS. In this trial, we aimed at evaluating the efficacy and safety of mesalazine in patients with IBS.

**Design** We conducted a phase 3, multicentre, tertiary setting, randomised, double-blind, placebo-controlled trial in patients with Rome III confirmed IBS. Patients were randomly assigned to either mesalazine, 800 mg, or placebo, three times daily for 12 weeks, and were followed for additional 12 weeks. The primary efficacy endpoint was satisfactory relief of abdominal pain/discomfort for at least half of the weeks of the treatment period. The key secondary endpoint was satisfactory relief of overall IBS symptoms. Supportive analyses were also performed classifying as responders patients with a percentage of affirmative answers of at least 75% or >75% of time.

**Results** A total of 185 patients with IBS were enrolled from 21 centres. For the primary endpoint, the responder patients were 68.6% in the mesalazine group versus 67.4% in the placebo group ( $p=0.870$ ; 95% CI  $-12.8$  to  $15.1$ ). In explorative analyses, with the 75% rule or >75% rule, the percentage of responders was greater in the mesalazine group with a difference over placebo of 11.6% ( $p=0.115$ ; 95% CI  $-2.7\%$  to  $26.0\%$ ) and 5.9% ( $p=0.404$ ; 95% CI  $-7.8\%$  to  $19.4\%$ ), respectively, although these differences were not significant. For the key secondary endpoint, overall symptoms improved in the mesalazine group and reached a significant difference of 15.1% versus placebo ( $p=0.032$ ; 95% CI  $1.5\%$  to  $28.7\%$ ) with the >75% rule.

**Conclusions** Mesalazine treatment was not superior than placebo on the study primary endpoint. However, a subgroup of patients with IBS showed a sustained therapy response and benefits from a mesalazine therapy.

**Trial registration number** ClinicalTrials.gov number, NCT00626288.

**INTRODUCTION**

IBS is the most common functional GI disorder in which abdominal pain and/or discomfort is associated with changes in bowel habit, and with features of disordered defecation. IBS affects 10–20% of the population and causes a marked reduction of quality of life in affected individuals.<sup>1</sup> IBS is a heterogeneous disorder involving a combination of negative life experiences and trauma, particularly early in life, genetic predisposition and environmental factors.

**Significance of this study****What is already known on this subject?**

- A high proportion of patients with IBS show low-grade inflammation in the intestinal mucosa.
- Low-grade inflammation is likely to be multifactorial, involving genetic factors, stress, atopy, previous episodes of infectious gastroenteritis, changes in gut microbiota and epithelial barrier defects.
- A previous proof-of-concept trial showed that mesalazine reduced the number of total immune cells and mast cells in the colonic mucosa of patients with IBS.

**What are the new findings?**

- This is the first large randomised controlled trial assessing the efficacy and safety of mesalazine in IBS.
- Mesalazine did not improve the percentage of patients with satisfactory relief of abdominal pain/discomfort for at least half of the weeks of the treatment period.
- Mesalazine significantly improved the percentage of patients with satisfactory relief of overall IBS symptoms if sustained responses were required (>75% of treatment period).

**How might it impact on clinical practice in the foreseeable future?**

- A subgroup of patients with IBS showed a sustained therapy response and benefits from mesalazine therapy.

Patients with IBS show dysfunction in the brain–gut axis, including anxiety, depression, gut dysmotility and visceral hypersensitivity. The relative importance of central versus peripheral mechanism in the IBS pathophysiology remains poorly defined.<sup>2</sup> Mounting evidence is showing microscopic and molecular abnormalities in large subsets of patients with IBS.<sup>3</sup> The most compelling evidence linking inflammation to IBS is the demonstration of the development of IBS in 3.7–36.8% of subjects following acute infectious gastroenteritis.<sup>4 5</sup> Mucosal and systemic immune activation have also been widely documented in patients with IBS in the absence of a previous major gastroenteritis event.<sup>3</sup> Mucosal inflammation is linked to increased mucosal permeability,<sup>6</sup>



► <http://dx.doi.org/10.1136/gutjnl-2015-309122>

► <http://dx.doi.org/10.1136/gutjnl-2015-310024>



CrossMark

**To cite:** Barbara G, Cremon C, Annesse V, *et al.* *Gut* 2016;**65**:82–90.

enterochromaffin cell hyperplasia and higher tissue availability of serotonin, a key factor involved in the control of gut sensorimotor functions.<sup>7 8</sup> Another key finding linking inflammation to IBS pathophysiology and symptom generation is the observation that adoptive transfer of mucosal biopsy supernatants evoked activation of sensory pain pathways<sup>9 10</sup> and abnormal enteric nervous system responses in recipient rodents.<sup>11–13</sup> Interestingly, these responses were reduced to a large extent by antagonism of immune-related factors including proteases and histamine.<sup>9 10 12 13</sup> The origin of low-grade inflammation in patients with IBS remains undetermined, but it is likely to be multifactorial, involving genetic predisposition,<sup>14 15</sup> stress,<sup>16</sup> atopy,<sup>17</sup> abnormal intestinal microbiota<sup>18</sup> and higher mucosal permeability increasing antigenic exposure of the mucosa to luminal antigens.<sup>6</sup>

Taken together, the above-reported evidences provide the rationale to test the efficacy of intestinal anti-inflammatory compounds in patients with IBS. In a previous randomised, placebo-controlled proof-of-concept trial, we showed that compared with placebo, mesalazine reduced the number of total immune cells, T cells and mast cells in the colonic mucosa of patients with IBS.<sup>19</sup> Although this trial was underpowered to detect effects on symptoms, a promising improvement on the patient's general well-being was identified.<sup>19</sup> In addition, while corticosteroid treatment was ineffective in symptom improvement at least in 29 patients with postinfectious IBS,<sup>20</sup> mast cell stabilisers, such as cromolyn sodium<sup>21</sup> and ketotifen,<sup>22</sup> showed promising results particularly in IBS with diarrhoea, suggesting a role of immune mechanisms and mast cells in IBS symptom generation. However, well-designed controlled studies are needed to confirm the efficacy of these drugs in IBS. Finally, mesalazine is the therapy of first choice for the treatment (clinical improvement, not necessarily remission) and maintenance of clinical remission in patients with mild-to-moderate UC.<sup>23</sup>

In the present study, we assessed the clinical efficacy and safety of mesalazine against placebo in a large, phase 3, randomised, double-blind, placebo-controlled, multicentre study in patients with IBS.

## METHODS

### Study design

This is a phase III, randomised, double-blind, placebo-controlled, parallel-arm, multicentre trial designed to study the efficacy and safety of mesalazine in adult patients with IBS. The study included a 2-week screening period, a 12-week placebo-controlled treatment period and a 12-week follow-up period (figure 1). After the screening phase, eligible patients were randomly assigned to either mesalazine 800 mg three times daily or

placebo in a 1:1 ratio. All the subjects were blindly allocated by means of scratch cards to one of the two treatment groups (mesalazine or placebo) according to a computer-generated randomisation list provided by the sponsor. A validated SAS program was used by an independent statistician to generate a randomisation list with blocks, block size=4, preallocated to centres. All patients, study investigators and sponsor staff were blinded to the randomisation codes. The codes were kept confidential until the end of the study when the randomisation code was broken after the database lock. Study visits were conducted every two weeks during the treatment period and every four weeks during the follow-up period.

The protocol was designed by the coordinating centre (GB, CC, RC and VS). Data were collected by investigators at each of the 21 Italian test centres and were monitored by the sponsor with the supervision of On Pharmaceutical Industry Service (OPIS) (a contract research organisation). OPIS personnel, in collaboration with the coordinating centre, analysed the trial data. A statistical analysis plan (SAP) was released and approved by the sponsor prior to the database lock and the unblinding of the treatment.

### Study patients

Eligible patients with symptoms meeting Rome III criteria for diagnosis of IBS<sup>1</sup> were recruited in the study from a total of 21 Italian centres. Inclusion and exclusion criteria are reported in online supplementary file.

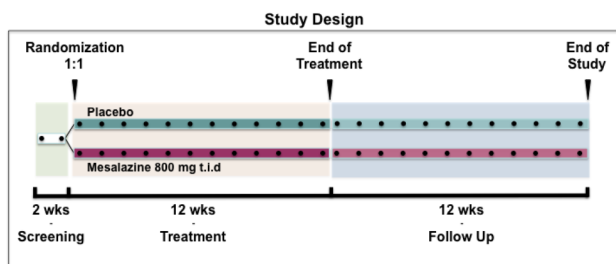
### Study assessment

Visits took place at screening, at baseline (randomisation visit) and every two weeks during the treatment period. During the follow-up, visits occurred monthly. The study data collection was carried out through a paper clinical case report form. Patients recorded daily all symptoms in a paper patient diary. Use of concomitant medication and adverse events were recorded at each visit. Additional safety data, such as haematology, blood chemistry and vital signs, were monitored.

The primary endpoint was assessed using a binary scale based on the patient answers to the following weekly question: "Did you have satisfactory relief of your abdominal discomfort or pain during the last week?" The patients were classified as responders if they reported an affirmative answer in at least 50% of weeks over a 3-month treatment period (50% rule). Explorative analyses were also performed. Patients were classified as responders if they reported a percentage of affirmative answers for at least 75% or >75% of the treatment time (75% rule and >75% rule, respectively). The 75% rule was pre-planned, as documented in the SAP, while the >75% rule was post hoc and performed with the intention of minimising placebo effect and optimising drug-placebo differences.

The key secondary endpoint was assessed using a binary scale based on the patient answers to the following weekly question: "Did you have satisfactory relief of your overall IBS symptoms during the last week?" The patients were classified as responders if they reported an affirmative answer in at least 50% of weeks over a 3-month treatment period. Explorative analyses were also performed. Patients were classified as responders if they reported a percentage of affirmative answers for at least 75% or >75% of the treatment time (75% rule and >75% rule, respectively).

The other secondary endpoints included daily assessment of abdominal pain or discomfort, bloating and general well-being, monitored using a 10-point visual analogue scale, and daily assessment of stool frequency and consistency (by means of the Bristol Stool Scale Form). At the end of the treatment period,



**Figure 1** Study design. There was a screening period of 2 weeks before randomisation (1:1), a 12-week placebo-controlled treatment period and a 12-week follow-up period. Study visits occurred every two weeks during treatment period and every four weeks during follow-up.

patients were asked to assess their overall satisfaction with treatment using a 10-point visual analogue scale. Weekly number of rescue medications was also computed. In addition, patients completed the IBS-specific quality of life questionnaire (IBS-QoL)<sup>24</sup> and the short-form 36 items health survey (SF-36)<sup>25</sup> at baseline, at the end of the treatment period and at the end of follow-up.

### Statistical analysis

Based on our previous proof-of-concept study,<sup>19</sup> we estimated the sample size for the study assuming that 30% of the patients in the placebo group and 55% in the mesalazine group would meet the criteria for the primary endpoint, namely the percentage of responder patients. A sample of 136 patients (68 patients in each of the two treatment group) was needed to have 80% power to show the 25-percentage-point difference between the groups at a significance level of 0.05. Assuming a dropout rate of 23% (36/159), the sample size was adjusted to 178 patients according to Freedman's formula.

All subjects who took at least one dose of the study treatments were included in the safety population. All randomised patients who took at least one dose of the study drug and with at least one evaluation of the primary endpoint were included in the intention-to-treat (ITT) population. All randomised patients who completed the entire treatment period without any major deviation from the protocol procedures were included in the per protocol (PP) population.

The primary efficacy population was ITT. The analysis on PP population was performed for supportive data. The results of the two analyses were evaluated for consistency. The percentage of responder patients was calculated by treatment group, and the difference between the percentages was tested by means of a  $\chi^2$  test. In order to evaluate the effect of treatment over time, a logistic model for repeated measures was applied. Dropout patients were handled in the following way: if the reason for discontinuation was the inefficacy of the therapy, patients were considered as non-responders; for all other reasons, in case of early discontinuation, a prevalence approach was adopted. In this approach, incomplete data were ignored. To illustrate the robustness of the conclusions, a sensitivity analysis was performed. The best scenario and the worst scenario were assumed for patients with missing values. In the first case, missing values were replaced with affirmative answers, in the latter with negative answers. The analysis was also performed adopting the complete case approach, considering only patients without missing data. Results were compared for consistency and if they led to similar conclusions there was reasonable assurance that the loss of information had no effect on the overall study conclusions. The Cochran–Mantel–Haenszel test was applied to test the difference in proportion between treatment groups, adjusting for site and for IBS type. The Breslow–Day test was applied in order to evaluate the homogeneity in the OR among sites and IBS types.

All the secondary efficacy analyses were performed on the ITT population. For the key secondary endpoint, that is, the percentage of patients with satisfactory relief of overall IBS symptoms, the same approach adopted for the primary endpoint was applied. To evaluate the difference between treatments in the overall satisfaction with treatment at the end of the treatment period, the unpaired t test or the Mann–Whitney test was applied, according to the data distribution. To evaluate the difference between treatments in abdominal pain/discomfort, bloating and general well-being intensity, the analysis of covariance (ANCOVA) model for repeated measures was applied considering values at week 2 and at week 1, treatment week and the

interaction treatment week as effect. Normality was assessed by means of the Shapiro–Wilk test. In case of non-normality of data, a rank transformation was applied. Stool frequency and consistency was described by treatment group and by day. Summary descriptive statistics of weekly stool frequency were provided by treatment group and by week. The weekly number of rescue medications was computed and described with summary statistics by treatment group and by week. IBS-QoL and SF-36 questionnaire data recorded at baseline, at the end of treatment and at the end of follow-up were described by treatment. The difference in answer distribution between treatments was tested by means of a Cochran–Armitage test for trend (exact version in case of cell numerousness lower than 5). No correction for multiple comparisons was applied due to the exploratory nature of this analysis. To evaluate the difference between treatments in total score and subscores, the ANCOVA model for repeated measures was applied considering value at baseline, treatment, time point and interaction treatment–time point as effect.

All statistical tests were performed with a significance level of  $\alpha=0.05$ . The data were analysed by means of the SAS System for Windows V.9.2.

## RESULTS

### Study patients

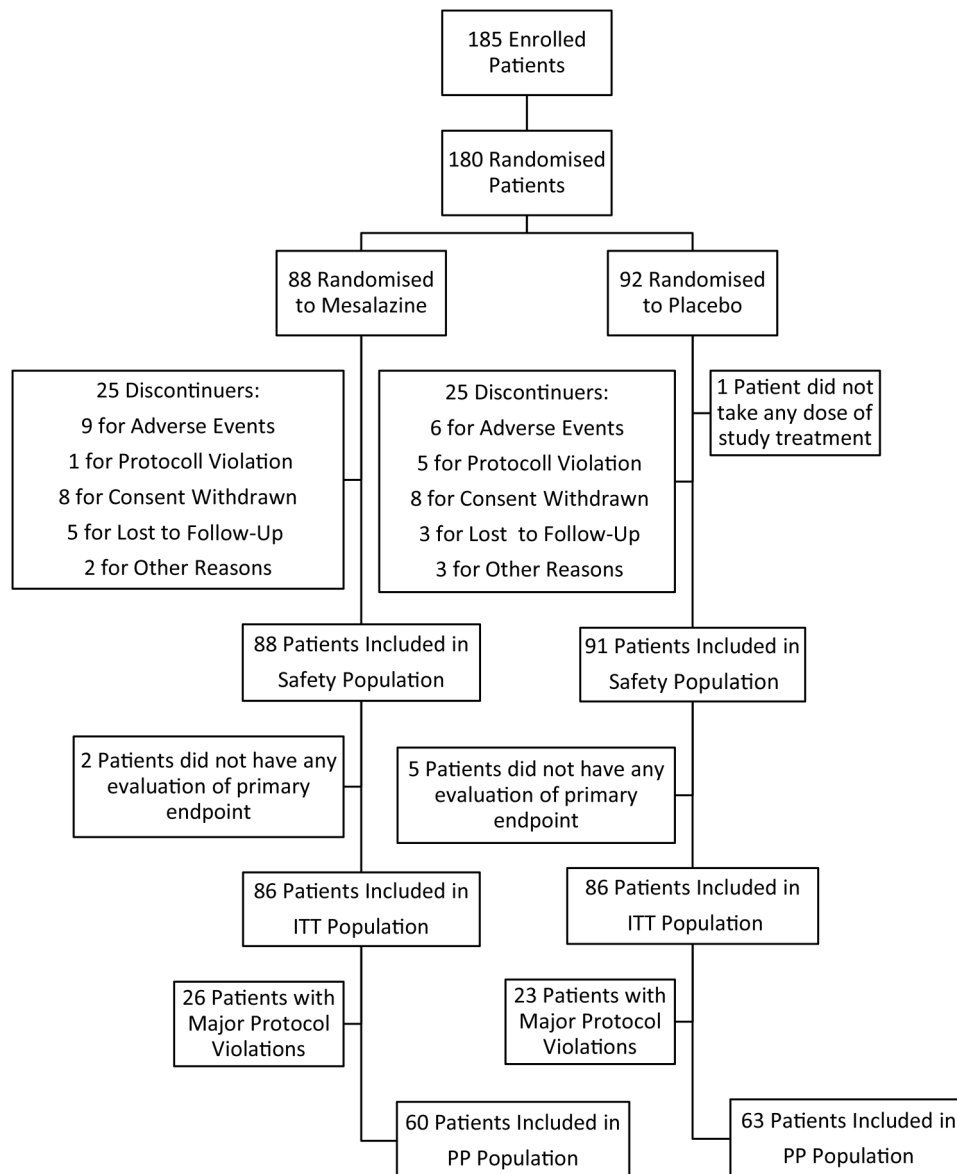
The flow chart of the enrolment and randomisation of the study is reported in [figure 2](#). The study was conducted from February 2008 through March 2012. A total of 185 patients with IBS were included in the study. Among the enrolled patients, five were not randomised and were excluded from all analyses. In total, 180 patients were randomised, 88 allocated to mesalazine and 92 to placebo treatment groups. One patient randomised to the placebo group did not take at least one dose of the study treatment. Thus, the safety population consisted of 179 patients. Seven other patients were excluded from the ITT population as they did not have any evaluation of the primary endpoint. Thus, 172 subjects received at least one dose of the study drug and were included in the ITT population. Among the 180 randomised patients, 50 patients prematurely discontinued the treatment. The primary reason included consent withdrawal (17 patients), adverse events (14 patients), lost during follow-up (8 patients), protocol violation (6 patients) and other reasons (5 patients). Protocol violations are reported in the online supplementary file. Overall, 85.5% of patients in the safety population took the study treatments, with compliance between 70% and 120%. Demographic and baseline characteristics of the safety population were similar between treatment groups and are reported in [table 1](#).

### Primary efficacy analysis

Satisfactory relief of abdominal discomfort or pain

The logistic model for repeated measures did not reveal a statistically significant effect for treatment ( $p=0.324$ ), nor interaction between treatment and time ( $p=0.897$ ). The answers varied significantly with time ( $p<0.001$ ). Using the same model to test the simple main effect, no statistical significance was detected at any week of treatment, although a borderline effect ( $p=0.060$ ) resulted for week 8 ([figure 3A](#)).

According to the prevalence approach, responder patients were 68.6% in the mesalazine group versus 67.4% in the placebo group, with a  $\delta$  difference in favour of the mesalazine group of 1.2% ( $p=0.870$ ; 95% CI  $-12.8\%$  to  $15.1\%$ ) ([figure 3B](#)). Non-statistically significant results were confirmed in the PP population, in which responder patients were 75.0% in the



**Figure 2** Flow chart of enrolment and randomisation of the study. A total of 185 patients with IBS were included in the study. Of these, five were not randomised and were excluded from all analyses. Of the 180 patients randomised, 88 were allocated to mesalazine and 92 to placebo. One patient randomised to placebo did not take at least one dose of the study treatment. Seven other patients were excluded from the intention-to-treat (ITT) population as they did not have any evaluation of the primary endpoint. Thus, 172 subjects were included in the ITT population. PP, per protocol.

mesalazine group versus 76.2% in the placebo group ( $p=0.878$ ; difference =  $-1.2\%$ ; 95% CI  $-16.4\%$  to  $14.0\%$ ). Among patients without missing data, responder patients were 79.1% in the mesalazine group versus 78.3% in the placebo group ( $p=0.904$ ; difference =  $0.8\%$ ; 95% CI  $-12.9\%$  to  $14.6\%$ ). In the 'worst scenario' and 'best scenario', the results were similar, indicating that missing data had no impact on the main result. The Breslow–Day test showed no homogeneity differences in the OR among sites ( $p=0.464$ ) and IBS subtypes (ie, IBS with constipation (IBS-C), IBS with diarrhoea (IBS-D), mixed IBS (IBS-M);  $p=0.193$ ). The percentage of responder patients according to IBS subtypes is reported in the online supplementary file.

#### Explorative analysis

Figure 3B shows the supportive analysis performed considering patients as responders if they reported a percentage of affirmative answers in at least 75% or >75% of the 3 months of treatment, adopting a prevalence approach. With the 75% rule,

responder patients were 43.0% in the mesalazine group versus 31.4% in the placebo group, with a  $\delta$  difference of 11.6% ( $p=0.115$ ; 95% CI  $-2.7\%$  to  $26.0\%$ ). With the >75% rule, responder patients were 32.6% in the mesalazine group versus 26.7% of patients in the placebo group, with a  $\delta$  difference of 5.9% ( $p=0.404$ ; 95% CI  $-7.8\%$  to  $19.4\%$ ).

Considering treatment and follow-up period together, no significant differences in the responder rate were observed between the mesalazine and placebo groups (67.4% vs 61.6%, respectively;  $p=0.426$ ; difference =  $5.8\%$ ; 95% CI  $-8.46\%$  to  $20.09\%$ ).

#### Secondary efficacy analysis

##### Satisfactory relief of overall IBS symptoms

The logistic model for repeated measures did not reveal statistically significant effects for treatment ( $p=0.155$ ), nor interaction between treatment and time ( $p=0.640$ ). The answers varied significantly with time ( $p=0.004$ ). Using the same model to test the simple main effect, a borderline significant effect was



**Table 1** Baseline characteristics of study participants

Characteristics	Placebo (n=91)	Mesalazine (n=88)	p Value
Age, years ( $\pm$ SD)	40.3 (12.2)	41.0 (11.6)	0.556
Female gender, n (%)	54 (59.3)	51 (58.0)	0.851
Ethnic origin			0.613
Caucasian, n (%)	89 (97.8)	85 (96.6)	
African, n (%)	1 (1.1)	2 (2.3)	
Asian, n (%)	1 (1.1)	0	
Other, n (%)	0 (0)	1 (1.1)	
IBS subtype (3)			0.481
IBS-D, n (%)	39 (42.8)	30 (34.1)	
IBS-C, n (%)	18 (19.8)	18 (20.4)	
IBS-M, n (%)	34 (37.4)	40 (45.5)	
Abdominal pain score* $\dagger$ ( $\pm$ SD)	4.5 (2.3)	4.6 (2.5)	0.930
Bloating score* $\dagger$ ( $\pm$ SD)	5.0 (2.7)	5.4 (2.8)	0.377
IBS-QoL $\dagger$ ( $\pm$ SD)	65.2 (16.4)	62.9 (17.4)	0.439
General well-being* $\dagger$ ( $\pm$ SD)	4.1 (2.5)	4.8 (2.5)	0.074
SF-36 $\dagger$ ( $\pm$ SD)	65.1 (15.4)	62.7 (16.0)	0.324

Data are reported as number of patients (%) or mean $\pm$ SD.

\*These parameters were collected at the screening visit (week 2).

$\dagger$ Results are reported on intention-to-treat population.

QoL, quality of life; SF-36, short-form 36 items health survey.

detected at week 3 ( $p=0.060$ ) and a statistical significance was detected at week 5 ( $p=0.038$ ) (figure 4A).

According to the prevalence approach, responder patients were 66.3% in the mesalazine group versus 61.6% in the placebo group, with a  $\delta$  in favour of the mesalazine group of 4.7% ( $p=0.525$ ; 95% CI  $-9.7\%$  to  $19.0\%$ ) (figure 4B). Among patients without missing data, responder patients were 73.1% in the mesalazine group versus 71.0% in the placebo group ( $p=0.783$ ; difference= $2.2\%$ ; 95% CI  $-13.0\%$  to  $17.2\%$ ). Similar data were obtained with both the 'worst scenario' and 'best scenario', indicating that missing data had no impact on the results. The Cochran–Mantel–Haenszel detected no statistically significant difference in proportion between treatment groups adjusted for site ( $p=0.513$ ). The percentage of responder patients according to IBS subtypes is reported in the online supplementary file.

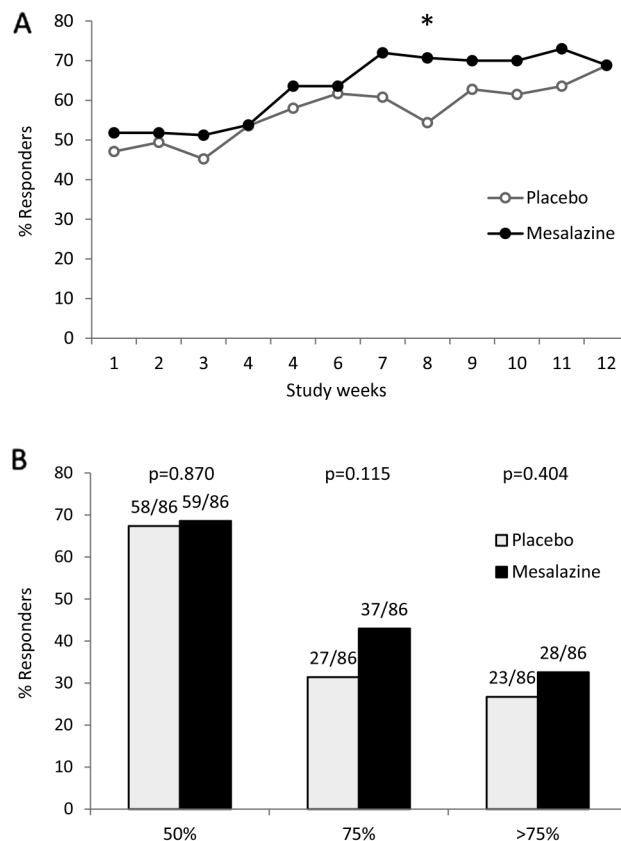
#### Explorative analysis

Figure 4B shows the supportive analysis adopting a prevalence approach. With the 75% rule, 46.5% of patients in the mesalazine group were responders versus 34.9% in the placebo group, with a  $\delta$  difference of 11.6% ( $p=0.121$ ; 95% CI  $-3.0\%$  to  $26.2\%$ ). With the >75% rule, 38.4% of patients were responders in the mesalazine group versus 23.3% in the placebo group, with a  $\delta$  difference of 15.1% ( $p=0.032$ ; 95% CI  $1.5\%$  to  $28.7\%$ ).

Considering treatment and the follow-up period together, no significant differences in the responder rate were observed between the mesalazine and placebo groups (69.8% vs 59.3%, respectively;  $p=0.151$ ; difference= $10.5\%$ ; 95% CI  $-3.8\%$  to  $24.7\%$ ). With the 75% rule, 41.9% of patients were responders in the mesalazine group versus 29.1% in the placebo group. The difference was 12.8% and borderline significant ( $p=0.080$ ; difference= $12.8\%$ ; 95% CI  $-1.4\%$  to  $27.0\%$ ).

#### Abdominal pain/discomfort, bloating and stool characteristics

Table 2 reports descriptive statistics by treatment group and by week for abdominal pain/discomfort and bloating. The ANCOVA model for repeated measures applied to the changes versus values at week 2 did not detect a statistically significant



**Figure 3** Primary efficacy analysis (satisfactory relief of abdominal pain or discomfort). The logistic model for repeated measures did not reveal a statistically significant effect for treatment ( $p=0.324$ ) nor interaction between treatment and time ( $p=0.897$ ). The answers varied significantly with time ( $p<0.001$ ). Using the same model to test the simple main effect, a borderline significant effect ( $p=0.060$ ) resulted for week 8 (A). According to the prevalence approach, responder patients were 68.6% in the mesalazine group versus 67.4% in the placebo group, with a  $\delta$  difference in favour of the mesalazine group of 1.2% ( $p=0.870$ ; 95% CI  $-12.8\%$  to  $15.1\%$ ) (B). *Explorative analyses.* With the 75% rule, 43.0% of patients in the mesalazine group were responders versus 31.4% in the placebo group, with a  $\delta$  difference of 11.6% ( $p=0.115$ ; 95% CI  $-2.7\%$  to  $26.0\%$ ) (B). With the >75% rule, 32.6% of responder patients were identified in the mesalazine group versus 26.7% of patients in the placebo group, with a  $\delta$  difference of 5.9% ( $p=0.404$ ; 95% CI  $-7.8\%$  to  $19.4\%$ ) (B).

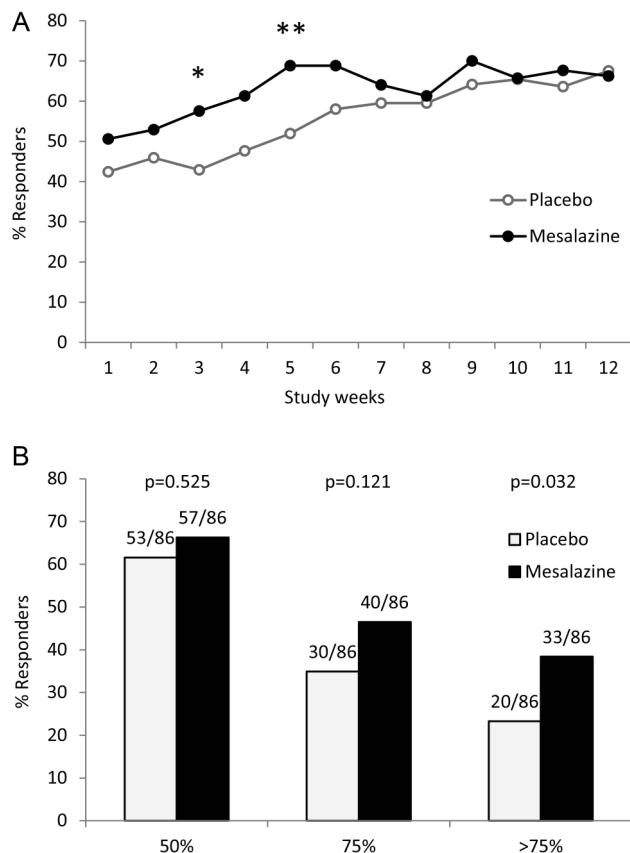
difference between treatment groups for all the aforementioned analyses (abdominal pain/discomfort:  $p=0.903$ ; bloating:  $p=0.184$ ). No relevant difference between treatment groups was detected for stool consistency and stool frequency (see online supplementary file).

#### General well-being, IBS-QoL, SF-36 and satisfaction with treatment

Table 2 reports descriptive statistics by treatment group and by week for general well-being, IBS-QoL and SF-36.

The ANCOVA model for repeated measures applied to the changes versus baseline at the end of treatment and at the end of follow-up, applied to general well-being, IBS-QoL and SF-36 data, did not show statistically significant difference between treatments.

IBS-QoL scores were characterised by high variability. Except from the sexual score that remained unchanged, all other items at the end of follow-up versus baseline showed higher values in the mesalazine group than in the placebo group, although there



**Figure 4** Secondary efficacy analysis (satisfactory relief of the overall IBS symptoms). The logistic model for repeated measures did not reveal statistically significant effect for treatment ( $p=0.155$ ) nor interaction between treatment and time ( $p=0.640$ ). The answers varied significantly with time ( $p=0.004$ ). Using the same model to test the simple main effect, a borderline significant effect was detected at week 3 ( $p=0.060$ ) and a statistical significance was detected at week 5 ( $p=0.038$ ) (A). According to the prevalence approach, responder patients were 66.3% in the mesalazine group versus 61.6% in the placebo group, with a  $\delta$  in favour of the mesalazine group of 4.7% ( $p=0.525$ ; 95% CI  $-9.7\%$  to  $19.0\%$ ) (B). *Explorative analyses.* With the 75% rule, 46.5% of patients in the mesalazine group were responders versus 34.9% in the placebo group, with a  $\delta$  difference of 11.6% ( $p=0.121$ ; 95% CI  $-3.0\%$  to  $26.2\%$ ) (B). With the >75% rule, 38.4% of responder patients were identified in the mesalazine group versus 23.3% of patients in the placebo group, with a  $\delta$  difference of 15.4% ( $p=0.032$ ; 95% CI  $1.5\%$  to  $28.7\%$ ) (B).

were no significant differences between the two groups (data not shown).

SF-36 scores were characterised by high variability. Except from the role limitations due to emotional problems score, the vitality score, the social functioning score and the global mental score, all other items at the end of follow-up versus baseline showed higher values in the mesalazine group than in the placebo group, although there were no significant differences between the two groups (data not shown).

The average overall satisfaction with treatment was  $6.4 \pm 2.5$  in the mesalazine group and  $5.8 \pm 2.7$  in the placebo group ( $p=0.266$ ).

### Rescue medication

In the placebo group, the average frequency of rescue medication was higher than that of the mesalazine group in most of the weeks of observation, but the differences were not statistically significant. In the ANCOVA model for repeated measures on the

weekly rescue medication frequencies, neither treatment effect ( $p=0.482$ ) nor interaction treatment week effect ( $p=0.492$ ) was significant.

### Safety

The safety profile of mesalazine was similar to that of placebo (table 3). Serious treatment emergent adverse events (ie, occurring after the first study medication exposure) were reported in four patients in the mesalazine group versus zero patients in the placebo groups and included two cases of gastroenteritis, one case of ischaemic colitis and one case of relapse of breast cancer. No deaths occurred during the study.

### DISCUSSION

This multicentre controlled trial assessed the efficacy and safety of mesalazine in the treatment of patients with IBS. The percentage of patients giving affirmative answers to the weekly question on satisfactory relief of abdominal pain or discomfort for >50% of the treatment period was set as the primary endpoint of the study. With this cut-off value, compared with placebo, mesalazine did not increase the percentage of responders.

There are several reasons explaining why we chose as primary endpoint the satisfactory relief of abdominal pain or discomfort for at least 50% of weeks over a 3-month treatment period. First, adequate or satisfactory relief of abdominal pain or overall IBS symptoms were the standards for primary outcome assessment in IBS trials at the time of the study design.<sup>26</sup> Responders were considered to be those patients who reported adequate or satisfactory relief in at least 50% of weeks over the treatment period.<sup>27–28</sup> These binary endpoints were used in several trials in IBS.<sup>27–29</sup> Abdominal pain is the key symptom of IBS and correlates with the severity of disease<sup>30</sup> and the use of healthcare resources.<sup>31</sup> Second, in our previous proof-of-concept study assessing the effect of mesalazine on intestinal immune cells, we observed a promising effect of mesalazine on abdominal pain.<sup>19</sup>

The new Food and Drug Administration and European Medicines Agency recommended end points substantially different from the past,<sup>32</sup> making the comparison between old and new studies complex. Based on previous studies showing a similar degree of immune cell activation both in patients with IBS-D and IBS-C,<sup>33</sup> we hypothesised that mesalazine could be effective in the reduction of abdominal pain in all subgroups of patients with IBS. In line with this hypothesis, we did not show any significant difference in treatment responses based on bowel habits.

One of the possible explanations for the lack of effect of mesalazine using the 50% cut-off value could be the high placebo response seen in this trial, which likely masked drug efficacy. The high number of planned visits, a short run-in period, the selection of patients from tertiary centres and the type of primary endpoint chosen could have all played a role in the high placebo response recorded in the present study,<sup>34</sup> and generally, in the high level of responders. Furthermore, the enrolment of both male and female subjects and patients with mild symptoms, due to the lack of a minimum requirement for the severity of abdominal discomfort/pain or duration of disease in the inclusion criteria, may have contributed to the high placebo response. Another limitation of the study is related to the small sample size. Data indicating that mesalazine had positive effects but did not reach a statistical significant suggest a type 2 error. Our sample size calculation may have been limited by lack of data from previous placebo-controlled trials assessing the efficacy of mesalazine in IBS, with the exception of our previous proof-of-concept study.<sup>19</sup>

**Table 2** Descriptive statistics by treatment group and by week for abdominal pain/discomfort, bloating, general well-being, IBS-QoL and SF-36

		Mesalazine (n=86)	Placebo (n=86)	p Value
<b>Abdominal pain/discomfort intensity</b>				
Mean (SD)	Baseline (week 2)	4.59 (2.54)	4.50 (2.34)	
Mean change versus baseline (SD)	End of treatment	-1.07 (2.54)	-1.21 (2.36)	
	End of follow-up	-1.07 (2.63)	-0.85 (2.94)	
Least squares means (SE)***		1384.18 (63.80)	1394.80 (58.80)	0.903*
<b>Bloating intensity</b>				
Mean (SD)	Baseline (week 2)	5.37 (2.77)	4.97 (2.65)	
Mean change versus baseline (SD)	End of treatment	-1.30 (2.63)	-0.88 (2.54)	
	End of follow-up	-0.93 (2.35)	-1.25 (3.15)	
Least squares means (SE)***		1305.12 (62.41)	1418.13 (57.06)	0.184*
<b>General well-being</b>				
Mean (SD)	Baseline (week 2)	4.75 (2.45)	4.11 (2.50)	
Mean change versus baseline (SD)	End of treatment	0.53 (2.50)	1.31 (2.84)	
	End of follow-up	0.39 (2.68)	1.43 (3.87)	
Least squares means (SE)***		1283.61 (61.55)	1314.83 (57.24)	0.712*
<b>IBS-QoL total score</b>				
Mean (SD)	Baseline	62.93 (17.36)	65.16 (16.41)	
Mean change versus baseline (SD)	End of treatment	7.06 (12.89)	5.81 (11.60)	
	End of follow-up	9.34 (13.28)	6.52 (14.30)	
Least squares means (SE)*		7.89 (1.41)	6.12 (1.40)	0.374**
<b>SF-36 total score</b>				
Mean (SD)	Baseline	62.68 (16.01)	65.09 (15.38)	
Mean change versus baseline (SD)	End of treatment	5.78 (12.90)	5.74 (13.44)	
	End of follow-up	8.17 (14.27)	7.60 (15.63)	
Least squares means (SE)**		125.98 (7.37)	125.19 (7.35)	0.940***

\*Least squares means and p value from an ANCOVA model for repeated measures on ranks of change versus baseline, considering as effects treatment, visit and interaction visit-treatment and as covariate value at week 1, value at week 2.

\*\*Least squares means and p value from an ANCOVA model for repeated measures on original values/on ranks.

\*\*\*Of change versus baseline, considering as effects treatment, visit and interaction visit-treatment and as covariate value at baseline. QoL, quality of life; SF-36, short-form 36 items health survey.

By increasing the percentage of time required to define the responders (75 and >75% rule), we found markedly higher response rates in the mesalazine group compared with the placebo group. This effect was evident in the satisfactory relief of abdominal pain as well as in the overall IBS symptom endpoints. In particular, a statistically significant improvement in the satisfactory relief of the overall IBS symptoms was found with the >75% rule. The  $\delta$  difference over placebo was >15%, and the number needed to treat was 7. The >75% rule is a more restrictive outcome measure and selects a smaller

percentage of responders. These data indicate that a subgroup of patients with IBS responded better to mesalazine than placebo. These more restrictive outcome measures have been previously used in the tegaserod<sup>28</sup> and linaclotide<sup>35</sup> trials and help to distinguish the 'sustained' responders to the active treatment from those responding to placebo. In line with this observation, in two randomised trials on linaclotide for chronic constipation, only 5% of subjects who received placebo was considered responders due to the rigour of the primary endpoint.<sup>35</sup> However, due to the explorative nature of these analyses, further studies are needed to confirm these results.

In addition to improving overall IBS symptoms with the 75% rule, mesalazine improved the percentage of responders to pain and discomfort at week 8 (50% rule) and the percentage responders to overall symptoms at weeks 3 and 5 (50% rule). There was also a trend in a better improvement of pain intensity and bloating as well as quality of life and a lower requirement of rescue medications with mesalazine, although these data did not reach statistical significance.

Although a subgroup of patients was more responsive to the mesalazine treatment, our data did not allow to identify these subjects. Patients with low-grade mucosal inflammation are possible candidates for a good response. In previous studies, we showed that low-grade intestinal inflammation is present roughly in half of the IBS population.<sup>33 36</sup> However, in the present study, we did not preselect these patients as the requirement of invasive techniques would have significantly reduced the enrolment rate.

Similar percentages of patients in the mesalazine group and in the placebo group had adverse events. In addition, the favourable safety profile of mesalazine was demonstrated in long-term

**Table 3** Treatment-emergent adverse events during the study

Event	Placebo (n=91)	Mesalazine (n=88)
<b>Adverse events</b>		
Upper respiratory tract infections	7 (7.7%)	11 (12.5%)
Diarrhoea	10 (11.0%)	6 (6.8%)
Headache	8 (8.8%)	5 (5.7%)
Nausea	2 (2.2%)	4 (4.6%)
Flatulence	4 (4.4%)	3 (3.4%)
Vomiting	3 (3.3%)	2 (2.3%)
Dyspepsia	4 (4.4%)	0 (0%)
<b>Serious adverse events</b>		
Gastroenteritis	0 (0%)	2 (2.3%)
Ischaemic colitis	0 (0%)	1 (1.1%)
Breast cancer	0 (0%)	1 (1.1%)

Adverse events are listed in descending order of frequency in the mesalazine group. The adverse events listed were reported in 2% or more of the patients in either treatment group.

studies in the maintenance of remission of UC.<sup>37</sup> Although the study showed no major adverse events in the mesalazine group as compared with placebo, long-term and larger studies are needed to assess this issue in patients with IBS.

In conclusion, the results of the present study indicate that a number of patients show a sustained therapy response and benefits from mesalazine therapy. Larger studies assessing the clinical predictors and confirming the beneficial effects of mesalazine are now required.

#### Author affiliations

- <sup>1</sup>Department of Medical and Surgical Sciences, Centre for Applied Biomedical Research, University of Bologna, Bologna, Italy
- <sup>2</sup>Division of Gastroenterology SOD2, University Hospital Careggi, Florence, Italy
- <sup>3</sup>Gastroenterology Unit, Ospedale Maggiore, Policlinico, Milan, Italy
- <sup>4</sup>Gastroenterology Unit, Department of Medical and Surgical Sciences, University of Bologna, Bologna, Italy
- <sup>5</sup>Gastroenterology Unit, Department of Gastroenterology, University of Pisa, Pisa, Italy
- <sup>6</sup>Department of Gastroenterology and Hepatology, Università Politecnica delle Marche, Ancona, Italy
- <sup>7</sup>Gastroenterology Unit, University of Verona, Verona, Italy
- <sup>8</sup>Division of Gastroenterology, Casa Sollievo Sofferenza Hospital, IRCCS, San Giovanni Rotondo, Italy
- <sup>9</sup>Gastroenterology Unit of Comacchio/Lagosanto, Ferrara, Italy
- <sup>10</sup>Gastroenterology Unit, University Campus Bio-Medico of Rome, Rome, Italy
- <sup>11</sup>Digestive Motility Diseases, Department of Clinical Medicine and Surgery, Federico II University Hospital, Naples, Italy
- <sup>12</sup>Gastroenterology Unit, S. Martino Hospital, Belluno, Italy
- <sup>13</sup>Gastroenterology Unit, Department of Clinical Science, "L. Sacco" University Hospital, Milan, Italy
- <sup>14</sup>Department of Medicine and Aging Sciences and CESI, G. D'Annunzio University and Foundation, Chieti, Italy
- <sup>15</sup>Gastroenterology Unit, St. Andrea Hospital, Vercelli, Italy
- <sup>16</sup>Department of Digestive Diseases, Hepatology and Clinical Nutrition, Dell'Angelo Hospital, Venice, Italy
- <sup>17</sup>Division of Gastroenterology, AO San Camillo Forlanini, Rome, Italy
- <sup>18</sup>Gastroenterology and Digestive Endoscopy Unit, IRCCS Policlinico San Donato, San Donato Milanese, Italy
- <sup>19</sup>Santissima Annunziata Hospital, Cento, Italy

**Acknowledgements** We are grateful to Gabriella Bartesaghi from SOFAR S.p.A and to Daniela Garavaglia and Aldo Poli from OPIS for their constant support in all phases of the study and assistance in the preparation of the manuscript. We would like to acknowledge the contribution of the following study participants during the trial: Angelo Andriulli, Rosanna Cogliandro, Lara Bellacosa, Giovanni Carini, Maria Raffaella Barbaro.

**Contributors** GB, CC, RC and VS planned the study, designed the protocol, contributed to the writing of the manuscript and to the screening and periodic visits of the patients. VA, GB, FB, MB, AB, LB, FB, PB, MC, RC, BG, MLS, PM, MN, MR, AS, MLS, MV and GZ contributed to the screening and periodic visits of the patients. All authors have access to the study data and have reviewed and approved the final manuscript.

**Funding** This study was supported by Sofar S.p.A., Trezzano Rosa, Milan, Italy. The funding agency had no role in the study design, collection, analysis, data interpretation or writing of the report.

**Competing interests** GB has been a consultant, served on the advisory board, received speaker's bureau fees, honorarium and travel support to meetings related to this study from the study sponsor, and has received consultancy fees and/or speaker fees from Danone, Yakult, Ironwood, Malesci, Nestlé, Noos, Synergy, Alfa Wassermann, Almirall and Shire. CC received research funding and travel support to meetings from the study sponsor. VA has been a consultant/speaker, served on the advisory board or received research grants from G iuliani, Abbvie, MS&D, Ferring, Takeda, Nycomed, Shire, Cosmo Pharmaceuticals, Sofar, SEDA, Hospira, Otsuka, Astra Zeneca, Dicofarm, Alfa Wassermann, Johnson & Johnson. FB has received research funding, travel support to meetings and speaker fees from Alfa Wassermann, Aptalis, Astra Zeneca, Sofar. MR received travel support to meetings from the study sponsor. VS has received consultancy fees and/or speaker fees from Alfa Wassermann, Almirall, Angelini Aptalis, CM&D Pharma, Farmaderma, Ironwood, Italcimici, Janssen, Norgine, Shire, Takeda, Valeas, Vibrant and Zeria. The remaining authors disclose no conflicts.

**Patient consent** Obtained.

**Ethics approval** The protocol was approved by an independent ethics committee at each centre and carried out according to the Declaration of Helsinki and the principles of good clinical practice.

**Provenance and peer review** Not commissioned; externally peer reviewed.

**Open Access** This is an Open Access article distributed in accordance with the Creative Commons Attribution Non Commercial (CC BY-NC 4.0) license, which permits others to distribute, remix, adapt, build upon this work non-commercially, and license their derivative works on different terms, provided the original work is properly cited and the use is non-commercial. See: <http://creativecommons.org/licenses/by-nc/4.0/>

#### REFERENCES

- 1 Longstreth GF, Thompson WG, Chey WD, *et al.* Functional bowel disorders. *Gastroenterology* 2006;130:1480–91.
- 2 Camilleri M. Peripheral mechanisms in irritable bowel syndrome. *N Engl J Med* 2013;368:578–9.
- 3 Barbara G, Cremon C, Carini G, *et al.* The immune system in irritable bowel syndrome. *J Neurogastroenterol Motil* 2011;17:349–59.
- 4 Spiller R, Garsed K. Postinfectious irritable bowel syndrome. *Gastroenterology* 2009;136:1979–88.
- 5 Cremon C, Stanghellini V, Pallotti F, *et al.* Salmonella gastroenteritis during childhood is a risk factor for irritable bowel syndrome in adulthood. *Gastroenterology* 2014;147:69–77.
- 6 Piche T, Barbara G, Aubert P, *et al.* Impaired intestinal barrier integrity in the colon of patients with irritable bowel syndrome: involvement of soluble mediators. *Gut* 2009;58:196–201.
- 7 Cremon C, Carini G, Wang B, *et al.* Intestinal serotonin release, sensory neuron activation, and abdominal pain in irritable bowel syndrome. *Am J Gastroenterol* 2011;106:1290–8.
- 8 Foley S, Garsed K, Singh G, *et al.* Impaired uptake of serotonin by platelets from patients with irritable bowel syndrome correlates with duodenal immune activation. *Gastroenterology* 2011;140:1434–43 e1.
- 9 Barbara G, Wang B, Stanghellini V, *et al.* Mast cell-dependent excitation of visceral-nociceptive sensory neurons in irritable bowel syndrome. *Gastroenterology* 2007;132:26–37.
- 10 Cenac N, Andrews CN, Holzhausen M, *et al.* Role for protease activity in visceral pain in irritable bowel syndrome. *J Clin Invest* 2007;117:636–47.
- 11 Buhner S, Li Q, Berger T, *et al.* Submucosal rather than myenteric neurons are activated by mucosal biopsy supernatants from irritable bowel syndrome patients. *Neurogastroenterol Motil* 2012;24:1134–e572.
- 12 Buhner S, Li Q, Vignali S, *et al.* Activation of human enteric neurons by supernatants of colonic biopsy specimens from patients with irritable bowel syndrome. *Gastroenterology* 2009;137:1425–34.
- 13 Balestra B, Vicini R, Cremon C, *et al.* Colonic mucosal mediators from patients with irritable bowel syndrome excite enteric cholinergic motor neurons. *Neurogastroenterol Motil* 2012;24:1118–e570.
- 14 Zucchelli M, Camilleri M, Andreasson AN, *et al.* Association of TNFSF15 polymorphism with irritable bowel syndrome. *Gut* 2011;60:1671–7.
- 15 Swan C, Duroudier NP, Campbell E, *et al.* Identifying and testing candidate genetic polymorphisms in the irritable bowel syndrome (IBS): association with TNFSF15 and TNFalpha. *Gut* 2013;62:985–94.
- 16 Piche T, Saint-Paul MC, Dainese R, *et al.* Mast cells and cellularity of the colonic mucosa correlated with fatigue and depression in irritable bowel syndrome. *Gut* 2008;57:468–73.
- 17 Vivinus-Nebot M, Dainese R, Anty R, *et al.* Combination of allergic factors can worsen diarrheic irritable bowel syndrome: role of barrier defects and mast cells. *Am J Gastroenterol* 2012;107:75–81.
- 18 Simren M, Barbara G, Flint HJ, *et al.* Intestinal microbiota in functional bowel disorders: a Rome foundation report. *Gut* 2013;62:159–76.
- 19 Corinaldesi R, Stanghellini V, Cremon C, *et al.* Effect of mesalazine on mucosal immune biomarkers in irritable bowel syndrome: a randomized controlled proof-of-concept study. *Aliment Pharmacol Ther* 2009;30:245–52.
- 20 Dunlop SP, Jenkins D, Neal KR, *et al.* Randomized, double-blind, placebo-controlled trial of prednisolone in post-infectious irritable bowel syndrome. *Aliment Pharmacol Ther* 2003;18:77–84.
- 21 Barbara G, Stanghellini V, Cremon C, *et al.* Aminosaliclates and other anti-inflammatory compounds for irritable bowel syndrome. *Dig Dis* 2009;27(Suppl 1):115–21.
- 22 Klooker TK, Braak B, Koopman KE, *et al.* The mast cell stabiliser ketotifen decreases visceral hypersensitivity and improves intestinal symptoms in patients with irritable bowel syndrome. *Gut* 2010;59:1213–21.
- 23 Mowat C, Cole A, Windsor A, *et al.* Guidelines for the management of inflammatory bowel disease in adults. *Gut* 2011;60:571–607.
- 24 Patrick DL, Drossman DA, Frederick IO, *et al.* Quality of life in persons with irritable bowel syndrome: development and validation of a new measure. *Dig Dis Sci* 1998;43:400–11.
- 25 Ware JE Jr, Sherbourne CD. The MOS 36-item short-form health survey (SF-36). I. Conceptual framework and item selection. *Med Care* 1992;30:473–83.
- 26 Irvine EJ, Whitehead WE, Chey WD, *et al.* Design of treatment trials for functional gastrointestinal disorders. *Gastroenterology* 2006;130:1538–51.



## Neurogastroenterology

- 27 Camilleri M, Northcutt AR, Kong S, *et al.* Efficacy and safety of alosetron in women with irritable bowel syndrome: a randomised, placebo-controlled trial. *Lancet* 2000;355:1035–40.
- 28 Tack J, Muller-Lissner S, Bytzer P, *et al.* A randomised controlled trial assessing the efficacy and safety of repeated tegaserod therapy in women with irritable bowel syndrome with constipation. *Gut* 2005;54:1707–13.
- 29 Muller-Lissner SA, Fumagalli I, Bardhan KD, *et al.* Tegaserod, a 5-HT(4) receptor partial agonist, relieves symptoms in irritable bowel syndrome patients with abdominal pain, bloating and constipation. *Aliment Pharmacol Ther* 2001;15:1655–66.
- 30 Lembo A, Ameen VZ, Drossman DA. Irritable bowel syndrome: toward an understanding of severity. *Clin Gastroenterol Hepatol* 2005;3:717–25.
- 31 Spiegel B, Bolus R, Harris LA, *et al.* Measuring irritable bowel syndrome patient-reported outcomes with an abdominal pain numeric rating scale. *Aliment Pharmacol Ther* 2009;30:1159–70.
- 32 Corsetti M, Tack J. FDA and EMA end points: which outcome end points should we use in clinical trials in patients with irritable bowel syndrome? *Neurogastroenterol Motil* 2013;25:453–7.
- 33 Cremon C, Gargano L, Morselli-Labate AM, *et al.* Mucosal immune activation in irritable bowel syndrome: gender-dependence and association with digestive symptoms. *Am J Gastroenterol* 2009;104:392–400.
- 34 Enck P, Bingel U, Schedlowski M, *et al.* The placebo response in medicine: minimize, maximize or personalize? *Nat Rev Drug Discov* 2013;12:191–204.
- 35 Lembo AJ, Schneier HA, Shiff SJ, *et al.* Two randomized trials of linaclotide for chronic constipation. *N Engl J Med* 2011;365:527–36.
- 36 Barbara G, Stanghellini V, De Giorgio R, *et al.* Activated mast cells in proximity to colonic nerves correlate with abdominal pain in irritable bowel syndrome. *Gastroenterology* 2004;126:693–702.
- 37 Feagan BG, Macdonald JK. Oral 5-aminosalicylic acid for maintenance of remission in ulcerative colitis. *Cochrane Database Syst Rev* 2012;10:CD000544.



## Randomised controlled trial of mesalazine in IBS

Giovanni Barbara, Cesare Cremon, Vito Annese, Guido Basilisco, Franco Bazzoli, Massimo Bellini, Antonio Benedetti, Luigi Benini, Fabrizio Bossa, Paola Buldrini, Michele Cicala, Rosario Cuomo, Bastianello Germanà, Paola Molteni, Matteo Neri, Marcello Rodi, Alfredo Saggioro, Maria Lia Scribano, Maurizio Vecchi, Giorgio Zoli, Roberto Corinaldesi and Vincenzo Stanghellini

*Gut* 2016 65: 82-90 originally published online December 22, 2014  
doi: [10.1136/gutjnl-2014-308188](https://doi.org/10.1136/gutjnl-2014-308188)

---

Updated information and services can be found at:  
<http://gut.bmj.com/content/65/1/82>

*These include:*

- |                               |  |
|-------------------------------|--|
| <b>Supplementary Material</b> | Supplementary material can be found at:<br><a href="http://gut.bmj.com/content/suppl/2014/12/22/gutjnl-2014-308188.DC1.html">http://gut.bmj.com/content/suppl/2014/12/22/gutjnl-2014-308188.DC1.html</a>   |
| <b>References</b>             | This article cites 37 articles, 8 of which you can access for free at:<br><a href="http://gut.bmj.com/content/65/1/82#BIBL">http://gut.bmj.com/content/65/1/82#BIBL</a>  |
| <b>Open Access</b>            | This is an Open Access article distributed in accordance with the Creative Commons Attribution Non Commercial (CC BY-NC 4.0) license, which permits others to distribute, remix, adapt, build upon this work non-commercially, and license their derivative works on different terms, provided the original work is properly cited and the use is non-commercial. See: <a href="http://creativecommons.org/licenses/by-nc/4.0/">http://creativecommons.org/licenses/by-nc/4.0/</a> |
| <b>Email alerting service</b> | Receive free email alerts when new articles cite this article. Sign up in the box at the top right corner of the online article.   |

---

<b>Topic Collections</b>	Articles on similar topics can be found in the following collections <a href="#">Open access</a> (241)
--------------------------	---

---

### Notes

---

To request permissions go to:  
<http://group.bmj.com/group/rights-licensing/permissions>

To order reprints go to:  
<http://journals.bmj.com/cgi/reprintform>

To subscribe to BMJ go to:  
<http://group.bmj.com/subscribe/>