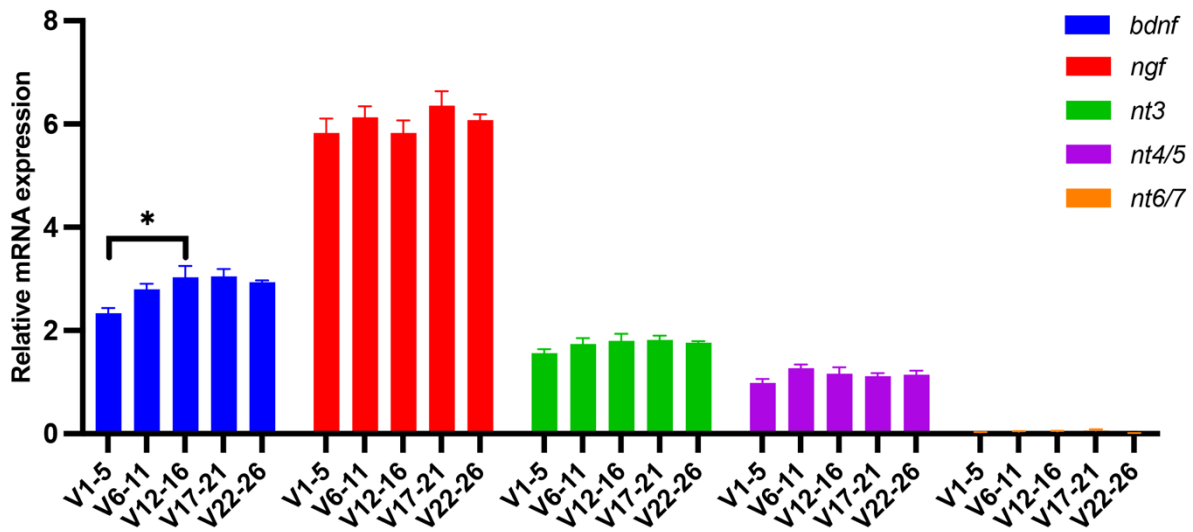
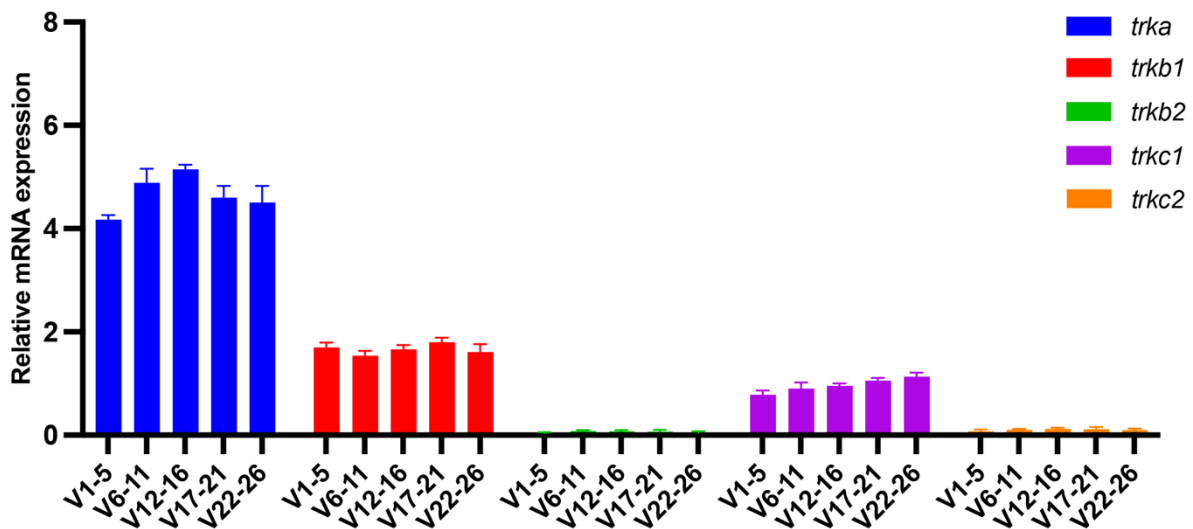


**a****b**

**Figure S1.** qPCR analysis of neurotrophins and receptors in five different segments of adult zebrafish spinal cord. (a) *Ngf* is highly transcribed in all regions of spinal cord. *Bdnf* transcription level presents a slight variation (the level is lower in V1-5 compared to the other segments) \* $P < 0.01$ . *Nt3* does not show variation in transcription level between different regions. It is the same for *nt4*. *Nt6/7* is undetectable in all regions. Statistical analysis was completed using a one-way ANOVA, adjusted for multiple test comparison (n=5 animals used). (b) The receptor *trka* is equally transcribed in all regions of spinal cord. Similarly, *trkb1* does not present significant difference in transcription level between the different segments. *Trkc1* presents a low level of transcription in all regions of spinal cord. *Trkb2* and *trkc2* are undetectable in all segments. Statistical analysis was completed using a one-way ANOVA, adjusted for multiple test comparison (n=5 animals used).