

Cite this: *J. Mater. Chem. A*, 2022, 10, 3025

Biaxially oriented silica–polypropylene nanocomposites for HVDC film capacitors: morphology–dielectric property relationships, and critical evaluation of the current progress and limitations†

Ilkka Rytöluoto,^a Minna Niittymäki,^b Paolo Seri,^c Hadi Naderiallaf,^c Kari Lahti,^b Eetta Saarimäki,^a Timo Flyktman^a and Mika Paajanen^a

Dielectric polymer nanocomposites are considered as one of the most promising insulation material candidates for future capacitive energy storage applications, providing tailorability of charge trapping and transport properties at the nanometric level which is a key for increased dielectric performance of biaxially oriented polypropylene (BOPP) for metallized film capacitors in high-voltage direct current (HVDC) applications. In this study, a comprehensive investigation of morphology and dielectric performance of pilot-scale BOPP nanocomposites with hexamethyldisilazane (HMDS)-treated hydrophobic fumed silica nanoparticles was carried out, providing critical perspectives on the performance and challenges of PNCs for thin film capacitors also in a broader context. In non-oriented cast films, incorporation of nanosilica modified the crystallization kinetics and α/β -crystalline spherulitic morphology of polypropylene and reduced the accumulation of space charge under a DC electric field. The nanocomposites exhibited promising dispersion characteristics in the nano-scale, however, the low amount of micron-sized agglomerates inherently present in commercial fumed silica persisted in the compounds which can become critical for thin film applications. Subsequently, biaxial-stretching-induced morphology development and dielectric properties of silica-BOPP nanocomposites were evaluated, highlighting the role of precursor morphology and film processing in the silica-BOPP film morphology, defects and dielectric performance. Charge trapping and transport properties of silica-BOPP films were investigated by isothermal and thermally stimulated techniques under high DC electro-thermal stresses, indicating profound modification of the trap density of states brought about by nanosilica. This resulted in more homogeneous space charge distribution and reduced temperature- and field dependent DC conductivity at 100 °C in comparison to neat BOPP under moderate field stresses ($<200 \text{ V } \mu\text{m}^{-1}$), while simultaneously maintaining low dielectric loss. However, the localized weak points caused by silica agglomerates still remain a challenge for the structural homogeneity and dielectric breakdown performance of thin BOPP films under extreme-field stress, hence emphasizing the need for further advancements in the agglomerate and PNC film morphology control to provide high-reliability nanodielectric capacitor thin films for practical HVDC film capacitor applications.

Received 2nd December 2021
Accepted 3rd January 2022

DOI: 10.1039/d1ta10336a

rsc.li/materials-a

Introduction

Biaxially oriented polypropylene (BOPP) film is the *de facto* industry standard for the main insulation layer in current state-

of-the-art polymer film capacitors employed in various demanding HVDC applications such as voltage source converters (VSC) with scalable modular multi-level converter (MMC)-topography for grid-interfacing of renewable energy sources to the hybrid AC/DC power grids.^{1,2} Modern BOPP capacitor films—being produced from the highest purity capacitor-grade isotactic PP resins by the sequential tenter film process^{3,4}—exhibit several key performance characteristics such as ultra-low dielectric loss characteristics^{2,5} ($\tan \delta$ in the range of 10^{-4}), high specific capacitance for film thicknesses⁶ reaching as low as $1.9 \mu\text{m}$, low DC conductivity (less than $10^{-16} \text{ S m}^{-1}$ at 70 °C, independent of electric field up to $200 \text{ V}_{\text{DC}} \mu\text{m}^{-1}$),^{2,7}

^aVTT Technical Research Centre of Finland, Tampere, Finland. E-mail: ilkka.rytoluoto@vtt.fi

^bLaboratory of Electrical Engineering, Tampere University, Tampere, Finland

^cElectrical, Electronic and Information Engineering “Guglielmo Marconi” Dept., University of Bologna, Bologna, Italy

† Electronic supplementary information (ESI) available. See DOI: 10.1039/d1ta10336a



excellent short-term dielectric breakdown strength (up to 769 $V_{DC} \mu\text{m}^{-1}$ at room temperature for large film areas),^{2,8} and graceful ageing characteristics due to excellent self-clearing breakdown capability in metallized form.^{9,10} Nevertheless, under high electro-thermal stresses encountered in modern-day HVDC power capacitor applications where nominal operation electric field and maximum temperature stresses can reach up to $>200 V_{DC} \mu\text{m}^{-1}$ and $>105^\circ\text{C}$,¹¹ respectively, the dielectric performance and reliability of BOPP thin film insulation are significantly reduced as the material approaches its natural limits.¹² Under such high stresses, several issues including space charge accumulation,¹³ ageing,¹⁴ non-linear conductivity increase and accelerated degradation,^{15,16} increased dielectric loss¹⁷ and capacitance loss due to increased probability of breakdown^{18,19} begin to compromise the dielectric integrity and lifetime of BOPP. This necessitates voltage de-rating at high temperatures or the use of auxiliary cooling systems for modern BOPP metallized film capacitors,^{10,18} hence reducing the capacitor energy density below the current industrial needs for demanding applications where significant heat is inherently present and the permitted volume and mass of capacitor units are limited (such as in off-shore HVDC converter stations and power electronic inverters for electric vehicles¹⁰). Therefore, new innovations towards enhancing the electro-thermal insulation performance of BOPP capacitor films beyond the current-state-of-the-art—while simultaneously maintaining high insulation reliability for critical capacitor applications where the expected lifetime can be several tens of years²⁰—are actively sought after.

Background – progress of BOPP-nanocomposites towards film capacitor applications

Fundamentally, the DC electro-thermal properties of BOPP are trap-controlled—that is, the electronic trap states within the energy band gap of semi-crystalline PP arising from physical/morphological disorder^{3,21} and chemical defects²² dictate the temperature- and field-dependent mobility, trapping and scattering of free charge carriers. The nature of these electron/hole trap states, particularly the trap density and depth distribution (both energetic and spatial), has significant effects on the bulk polarization, electrical conductivity, space charge accumulation and dielectric strength of polymer insulation, thus making it very desirable to be able to control their nature and quantity. In this context, dielectric polymer nanocomposites (PNC) have been considered as one of the most potential material candidates for future electric energy storage applications, providing tailorability of the dielectric properties at the nanometric level.²³ Essentially, due to the enormous surface-to-volume ratio of nanoparticles (NP), the vast interface between the polymeric host and the nanoparticles provides a unique route to locally alter charge trapping and transport properties, which, in well-dispersed PNC systems, can be reflected as a beneficial modification of the bulk dielectric properties. Good dispersion of nanoparticles, compatibility with the polymeric host, and avoidance of large agglomerates which can act as electrical weak points are among the key pre-requisites for high-performance nanocomposite dielectrics. Surface functionalization of the

nanoparticles by organic modifiers such as silanes plays an essential role in enhancing the NP dispersion and compatibility with the polymeric host, and in modifying the electrical properties at the NP–matrix interface *via* introduction of electro-active chemical groups which constitute to the formation of new localized charge trapping sites with designed trap properties.^{24–26}

Considering recent studies on PP-based nanocomposites aimed for film capacitor applications, two principal nanocomposite strategies have gained high interest, namely (i) increasing the composite permittivity *via* inclusion of high-permittivity nanoparticles, or (ii) increasing the maximum permissible operation field strength by nanostructuring (by increasing operation voltage or, conversely, by reducing the film thickness). These two approaches are motivated primarily by the potential increase obtainable in capacitor energy density: for linear dielectrics (such as BOPP), the volumetric energy density of the dielectric film layer is governed by the equation $u = 1/2\varepsilon_r\varepsilon_0E^2$ where ε_r is the (temperature-dependent) relative permittivity, ε_0 is the vacuum permittivity and E is the electric field strength. The former approach, focusing on enhancing the effective dielectric permittivity, is however challenging,²⁷ as high volume fraction (near or above percolation) of high-permittivity fillers such as BaTiO₃ is needed to realize any appreciable increase in PP-nanocomposite permittivity,²⁸ leading simultaneously to unfavourable electric field enhancement and increased breakdown probability in the polymer matrix, unacceptably high interfacial polarization loss and poor tensile strength which is critical for industrial film manufacturing.^{29,30} On the other hand, the latter approach, focusing on increasing the maximum permissible electric field stress of PP films *via* inclusion of permittivity-matching nanoparticles to tailor the charge trapping and transport properties at the nanometric level, has been shown to be a promising route towards practical film capacitor applications. Previously, pathways to the modification of the trap density of states and indications of bulk dielectric property improvement in BOPP films through incorporation of low amounts of surface-functionalized inorganic nanoparticles such as SiO₂, Al₂O₃, TiO₂ and POSS have been demonstrated,^{31–33} including decreased electrical conductivity and space charge accumulation,^{34–36} increased short-term dielectric breakdown strength,^{33,37,38} and increased resistance against partial discharges (PD),³⁸ for instance.

However, assessing the performance of new (nano-) dielectrics for film capacitor applications necessitates careful testing of the properties in relevant morphologies and thickness scales, *i.e.* in biaxially stretched films, as a first step. Especially for very thin capacitor films (5 μm or less), avoiding structural inhomogeneities caused by *e.g.* NP agglomeration and cavitation/void formation during biaxial stretching, or other manufacturing issues such as inhomogeneous film thickness and surface texture, pinholes, wrinkles *etc.* is imperative for ensuring good industrial processability and high dielectric performance.^{23,39} This information cannot be obtained directly from laboratory-scale prototypical PNC specimens (*e.g.* hot-pressed or solvent-cast films), but instead, it necessitates



careful investigation and optimization of the PNC composition, compounding, morphology formation and processing into biaxially oriented thin films using industrially relevant manufacturing methods (*i.e.* melt extrusion and biaxial orientation). This has been seldomly reported in a comprehensive manner,^{37,39,40} thus leaving processing–structure–property relationships in BOPP nanocomposites largely non-established. Moreover, understanding the fundamental mechanisms for dielectric property enhancement as well as the current limiting factors for biaxially oriented PNC thin films is highly required for advancing the field.³⁹ Thereafter, bridging the gap between laboratory studies on prototypical samples and industrial scale capacitor film processing by film scale-up is a necessity, followed by component level studies (in actual capacitors or elements) where the evaluation of performance at relevant scales of capacitor film area (up to 1000 m² in large capacitor banks), electro-thermal stress (>200 V μm⁻¹ at ~70–85 °C) and operation time (up to tens of years) can be approached by accelerated tests.^{14,18}

This study focuses especially in the first part, *i.e.* to provide detailed information about the processing–structure–property relationships and underlying mechanisms for pilot-scale BOPP PNC films filled with hydrophobic fumed silica nanoparticles (the latter part, focusing on film scale-up and capacitor level tests will be presented elsewhere). In this study, pilot-scale PP nanocomposite films incorporating hydrophobic fumed silica nanoparticles were prepared *via* industrially relevant melt-blending, film extrusion and biaxial stretching approach. Several pilot-scale compounding and film processing trials were performed over the course of four years during which processing and film morphology were investigated and subsequently improved. Thus, more than 25 different silica–PP nanocompounds and non-oriented/biaxially oriented film variants with different compositions, compounding parameters and film processing are considered. Detailed analysis and critical evaluation of morphology, silica dispersion, biaxially stretched film structure formation and dielectric properties of silica–PP nanocomposites are presented, and potential for future film capacitor applications are discussed.

Experimental

Materials and film processing

Compounds comprising a capacitor-grade isotactic polypropylene (iPP) homopolymer matrix and 0–4.5 wt% of commercial hydrophobic fumed silica nanoparticles (Evonik Aerosil® R 812 S) after-treated with hexamethyldisilazane (HMDS) were manufactured. Standard phenolic antioxidant (AO) was added at two different concentrations for preventing thermo-oxidative degradation of the PP matrix during the melt processing (the exact concentrations are not given here, however, the relative amounts were high-AO [wt%] > low-AO [wt%]). The naming convention used in this study is PP-[silica content]-[antioxidant content]-[masterbatch route], *e.g.* PP-1.0-HighAO-MB1 refers to a 1.0 wt% silica PP composite with a high antioxidant content prepared *via* masterbatch route (explained below).

Pre-mixed and dried raw materials were compounded using a KraussMaffei Berstorff ZE 25 × 49D UTX compounder with nitrogen gas purge and a screen pack (screw speed 150 rpm, output 7–18 kg h⁻¹, up to >1000 kg production batches). The screw geometry was optimized for highly dispersive mixing of nanoparticles. The compounded strands were cooled in filtered water bath, pelletized and then extruded into ~350–400 μm thick cast films using a Brabender Plasticorder single screw extruder inside a mobile soft-walled clean room (temperature profile of 200–230 °C, screw speed of 70–80 rpm, 18 μm screen pack for filtering of large agglomerates). While most of the compounds were manufactured by direct mixing, additional 1.0 wt% PP–silica compounds were also prepared by diluting 4.5 wt% silica–PP masterbatch with virgin PP either by twin-screw compounder (MB1) or during the cast film extrusion (MB2). The masterbatch route is relevant especially from the perspective of up-scaling the production process to industry level, and for possible reduction of nanosilica agglomerate size and quantity by the additional melt-mixing and filtration taking place during the dilution of the masterbatch. Finally, 10 cm × 10 cm specimens cut from the cast films were biaxially stretched into thin films inside a semi-clean room using a Brückner KARO IV laboratory stretcher. Biaxial stretching parameters were varied (stretching temperature ~153–163 °C, pre-heating time 60–120 s, stretching speed 417% per s, simultaneous biaxial stretch ratio up to 6.0 × 6.0) with the resulting silica–BOPP film thicknesses being in the ~5–12 μm range.

Morphological characterization

Morphological and non-isothermal crystallization kinetics analysis. Differential scanning calorimetry (DSC) measurements were performed for ~5–8 mg disc-shaped cast film and BOPP film specimens encapsulated in aluminium pans using a TA Instruments Q2000 DSC in the –50 °C to 230 °C temperature range (dynamic heating rate of 10 °C min⁻¹). The DSC instrument was calibrated frequently using an indium standard and the measurements were performed under a constant nitrogen gas purge of 50 ml min⁻¹. Melting enthalpy (ΔH_m), onset of melting (T_{om}) and melting temperature (T_m) were determined from both the first and second heating runs to study the initial film morphology (dependent on film processing) and the morphology formed during melting–cooling DSC scan (thermal history erased), respectively. Crystallization temperature (T_c) and enthalpy (ΔH_c) were determined from the first cooling run and glass transition temperature (T_g) from the second heating run. The degree of crystallinity (X_{DSC}) was determined from the melting enthalpy as

$$X_{DSC} = \frac{\Delta H_m}{(1 - \varphi)\Delta H_\alpha^0} \times 100\% \quad (1)$$

where φ is the realized nanoparticle weight fraction and ΔH_α^0 is the heat of fusion of a completely crystalline α -form iPP material (taken as 170 g J⁻¹⁴¹). Two parallel specimens were measured for each compound. The realized nanoparticle weight fractions (φ) in the nanocompounds were determined from cast film samples by burning the organic polymer and additives at



600 °C and weighing the residual ash in accordance with the ISO 3451-1 standard. The realized nanoparticle concentrations obtained by the ash method are typically slightly lower than the targeted concentrations,^{33,37} being attributable to rate fluctuations and loss in the gravimetric feeding of low amounts of nanosilica during compounding.

Non-isothermal crystallization kinetics of cast film specimens were studied by dynamic DSC scans in the −50 °C to 230 °C temperature range by varying cooling rates of 2.5, 5, 10 and 20 °C min^{−1}. Relative degree of crystallinity as a function of temperature was calculated for each cooling rate from the corresponding dynamic crystallization exotherms as:

$$X(T) = \left(\int_{T_0}^{T_c} \left(\frac{dH_c}{dT} \right) dT \right) / \left(\int_{T_0}^{T_\infty} \left(\frac{dH_c}{dT} \right) dT \right) \quad (2)$$

where T_0 is the onset crystallization temperature, T_∞ is the temperature where the crystallization process is finished, and T is the temperature at time t . Transformation from temperature to time is given by the relationship $t = (T_0 - T)/\alpha$ where α is the cooling rate.

Film structure and nanosilica dispersion analysis. Surface and cross-sectional morphologies of the non-oriented cast films and biaxially stretched thin films were studied by optical microscopy (OM), scanning electron microscopy (SEM) and 3D optical profiling. OM analysis was carried out by using a Meiji Techno ML8530 microscope equipped with a polarizing facility and a digital camera. Thin cast film sections (25 μm) for the OM analysis were prepared using a Microm HM 325 microtome at room temperature and imaged under cross-polarized reflected light. SEM analysis was performed on specimens broken in liquid nitrogen by using a Tescan VEGA3 SB and JEOL JSM 6360-LV scanning electron microscopes. Quantitative silica diameter, dispersion and distribution analysis was performed from several SEM micrographs by using ImageJ and MATLAB software. 3D surface topography analysis was carried out by using a Veeco Wyko® NT1100 optical profiling system in vertical scanning interferometry (VSI) mode from both film sides (147 μm × 96 μm scanning area).

Pulsed electro-acoustic measurement (PEA). Space charge measurements were performed for the non-oriented cast films (pre-conditioned at 60 °C under vacuum for 72 hours) by the pulsed electro-acoustic (PEA) method, utilizing 10 ns voltage pulses with amplitude of 300 V. The acoustic signals were collected by a 9 μm thick PVDF piezoelectric and amplified by an amplifier cascade. The thin film system amplifier had a −3 dB bandwidth of 250 MHz. These features resulted in a spatial resolution of less than 10 μm. Calibration of the system was made after 10 s from the polarization of the sample (under low voltage and electric field). The PEA measurements were done at 60 °C, in a controlled environment, with DC electric fields of 50 V μm^{−1}. Polarization (when voltage is applied) and depolarization (when voltage is removed and the sample is short-circuited) times were fixed at 3 h and 1 h, respectively.

Dielectric and trap spectroscopy. Broadband dielectric spectroscopy measurements and various high-field trap spectroscopy measurements based on isothermal and thermally

stimulated methods were performed for the biaxially stretched films to study complex permittivity and charge trapping/transport properties. Circular Ni/Au bi-layer electrodes (thickness 10 + 100 nm, diameter 22 mm) were deposited on both sides of the thin film specimens using a custom-built e-beam evaporator (Instrumentti Mattila) inside an ISO 14644-1 class 6 clean room facility. High vacuum (pressure <1 × 10^{−6} mbar) and low deposition rate (0.05–0.20 nm s^{−1}) were maintained during the evaporation process to minimize thermal and radiative damaging of the sample film. The evaporated samples were short-circuited and stored in a vacuumed desiccator for several days prior to electrical measurements. Complex relative permittivity $\epsilon_r^* = \epsilon_r + i\epsilon_r'$ was measured using a Novocontrol Alpha-A dielectric analyzer equipped with a Novocool temperature control system in the 0.01 Hz to 1 MHz frequency range. Temperature dependence of the complex dielectric permittivity was studied in the −60 °C to +120 °C temperature range.

Thermally stimulated polarization and depolarization current measurements (TSDC/TSPC) and isothermal charging/discharging current measurements (ICC/IDC) were performed by using a custom-built modular test setup comprising of a high voltage DC source (Keithley 2290E-5), a sensitive electrometer (Keithley 6517B) and a temperature control unit (Novocool). A shielded thin film sample cell equipped with a PT100 temperature sensor (Novocontrol BDS1200 HV sample cell) and shielded cables were used for all the measurements. Temperature control (accuracy of ±0.1 °C) was realized using the Novocool system (TSDC/TSPC measurement) or a PID-controlled electrical heating element (ICC/IDC measurement). A diode-based overload protection circuit and a 100 kΩ series resistor were used to protect the electrometer in case of a sample breakdown during high voltage application. The charging/discharging current was recorded for the whole duration of the TSDC/TSPC measurement, yielding also information about the transient conductivity characteristics under isothermal mode (charging phase prior to TSDC measurement).

Large-area breakdown characterization. Room temperature large-area DC breakdown characteristics of the biaxially stretched films were measured using a self-healing breakdown method detailed elsewhere.^{42,43} Test capacitors with active area of 81 cm² were assembled by sandwiching the sample film between two sheets of commercial Zn–Al metallized BOPP film, the metallized surfaces of which were facing towards the sample film. Self-healing breakdown measurements were performed in atmospheric air using a slow-rate-of-rise voltage ramp profile defined in the IEC-60243-1 standard. Six sample films were measured for each material type, resulting in 486 cm² of total measured film area. Analysis of the multi-breakdown data sets was carried out in MATLAB and statistical analysis was based on Weibull statistics.

Results and discussion

Cast film properties

Crystalline morphology. Fig. 1a presents the DSC first heating endotherms of selected silica–PP cast films reflecting the extruded film morphology relevant for biaxial stretching, and



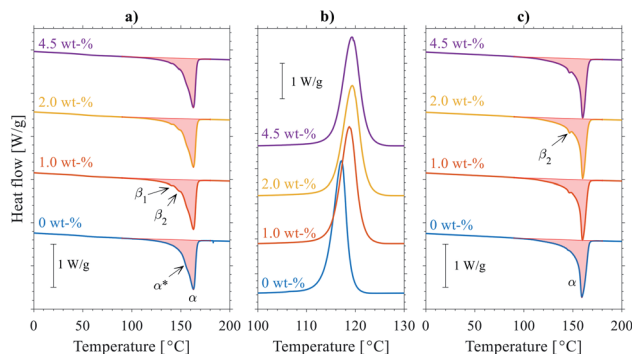


Fig. 1 DSC data of selected PP-silica cast films: (a) First heating (initial cast film morphology), (b) first cooling (crystallization from melt) and (c) second heating. The curves are offset in y-direction for clarity and melting peaks corresponding to α - and β -form crystallinity are labelled.

parameters from the cast film DSC tests are enlisted in Table S1.† All the cast films exhibited mixed α/β -form melting endotherms typical for non-oriented capacitor PP precursor films: a major melting peak at ~ 163 °C corresponding to the melting of α -phase, and two small endothermic peaks at ~ 140 °C (β_1) and ~ 148 °C (β_2) corresponding to melting-recrystallization-remelting behavior of the β -phase iPP.^{44,45} It is known from simultaneous X-ray and DSC measurements that β -crystalline PP exhibits complex structural changes during dynamic DSC heating scan.⁴⁶ Above 130 °C the original β_1 -phase, formed during the cast film extrusion, begins to melt and subsequently recrystallizes into a more stable β_2 -phase. Simultaneously, above 140 °C, recrystallization into α -form also occurs, while the remaining β_2 -phase finally melts completely at ~ 150 °C. Thus, the final α -form melting endotherm exhibits a main peak and a shoulder peak (α^*) in the lower temperature half, corresponding to the original and recrystallized α -form crystallites, respectively.

While the overlapping α/β -form melting/crystallization/remelting processes occurring during the DSC heating scan complicate the accurate determination of the crystallinity of the original (cast film) state,⁴⁷ the degree of crystallinity can nevertheless be estimated from the melting enthalpies by eqn (1) to evaluate the effect of nanosilica, see Table S1.† A slightly decreasing trend in cast film X_{DSC} with increasing silica content was observed both for the first and second heating endotherms (measurement uncertainty in degree of crystallinity was $\pm 0.2\%$), indicating a subtle modification of the crystallization behavior of PP brought by nanosilica. This is further supported by the increase (and saturation) of the crystallization peak temperature with increasing silica content during cooling from the melt (Fig. 1b), being attributable to a mild increase in nucleation density upon incorporation of hydrophobic silica NPs.^{48–50}

The small increase in nucleation density can be related with the slightly higher propensity for β -phase formation for the silica-PP nanocompounds in comparison to neat PP, which is clearly seen especially in the second heating endotherms (Fig. 1c). In other words, when the crystallization conditions are

suitable for β -crystal growth (generally in temperature range of 90–130 °C), as is the case for the relatively slow DSC cooling as opposed to the rapid cooling during cast film extrusion, nanosilica can promote β -crystal formation. This was visually confirmed by cross-sectional POM analysis of the cast films (see Fig. S1a and b†), showing spherulitic skin-core-type morphologies with slightly higher amount of (birefringent) β -spherulites observable for the silica-containing cast films. The nanosilica-induced changes in β -crystallinity are however considered minor and they can be likely compensated by fine-tuning of the cast film extrusion parameters (most importantly the cooling gradient). This is important, as excessive β -crystal content in the core layers of capacitor cast film can lead to porosity and void formation upon biaxial stretching, hence reducing the dielectric breakdown strength.⁴³ We note here several recent studies, aimed for capacitor applications, where the beneficial role of crystallization conditions⁵¹ or nucleating additives (e.g. β -nucleating agents^{52–54}) are highlighted for controlling the density and nature of the crystalline-amorphous interface and improving dielectric properties of PP. However, it is important to consider that during biaxial stretching of PP—a critical conversion step to obtain thin high-performance BOPP dielectric film^{43,55}—biaxial-stretching-induced transformation of the mixed α/β -spherulitic precursor film morphology into a complex BOPP fibrillar morphology with predominantly α -crystalline structure occurs, and thus it is not always straightforward to relate the effects of crystalline modification on prototypical PP specimens with BOPP film properties.

Non-isothermal crystallization kinetics. The effects of nanosilica on the non-isothermal crystallization kinetics of PP

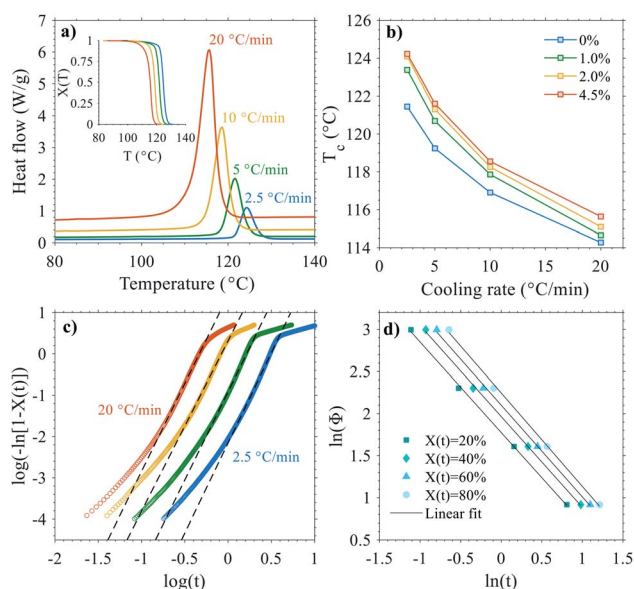


Fig. 2 a) DSC crystallization exotherms under various cooling rates for PP-4.5-HighAO. The inset shows the relative degree of crystallinity $X(T)$. (b) Dependence of the crystallization peak temperature T_c on the cooling rate for 0–4.5 wt% silica composites. (c) is the Avrami analysis plot and (d) is the combined Ozawa-Avrami plot for 4.5 wt% silica-PP composite.



were studied further by performing dynamic DSC scans under various cooling rates, see Fig. 2 and Table S2.† As exemplified for a 4.5 wt% silica–PP composite the crystallization peak temperature T_c decreased with increasing cooling rate as expected (Fig. 2a), and furthermore, with increasing silica content the crystallization peak temperatures shifted to higher temperatures (Fig. 2b). The calorimetric data were analyzed based on the modified Avrami and combined Ozawa–Avrami models which have been previously found applicable for describing non-isothermal crystallization kinetics of various polymer (nano-)composites.^{56–59} Exemplifying Avrami plots of a 4.5 wt% silica–PP nanocomposite are presented in Fig. 2c at various cooling rates. All the studied compounds exhibited “S-type” curves, from which it is evident that the Avrami model is satisfied only in limited distinct regions. The Avrami parameters derived from the middle plot portions corresponding to the main crystallization process are presented in Table S2† for the 0–4.5 wt% silica–PP nanocomposites. With increasing cooling rate, the crystallization constant Z_c increases while the crystallization half-time $t_{1/2}$ decreases, thus indicating faster crystallization rate. On the other hand, at fixed cooling rate, the addition of nanosilica is found to reduce Z_c and increase $t_{1/2}$ in comparison to those of neat PP, *i.e.* to reduce the crystallization rate.

Due to the inadequacy of the Avrami model to fully describe the non-isothermal crystallization, further analysis was carried out based on the combined Ozawa–Avrami model which has been proven to be well-applicable for describing non-isothermal crystallization process.⁶⁰ Exemplifying Ozawa–Avrami plots of a 4.5 wt% silica–PP composite are presented in Fig. 2d. Good linear correlation was observed for all the studied compounds (mean R^2 of 0.998), indicating that the combined Ozawa–Avrami model can describe the non-isothermal crystallization process in the studied compounds satisfactorily. The derived Ozawa–Avrami parameters are listed in Table S2.† At a given degree of crystallinity, an increase in $F(T)$ was systematically observed for the silica nanocomposites in comparison to neat PP, *i.e.* higher cooling rate is needed within unit crystallization time: this indicates that the rate of crystallization in PP is decreased with increasing nanosilica content, being consistent with the implications from the modified Avrami model analysis above. This implication of reduced crystallization rate brought by HMDS-treated nanosilica for the samples studied herein is in contrast with the data presented previously *e.g.* for isotactic PP composites with dimethyldichlorosilane (DDS)-treated hydrophobic fumed nanosilica (Aerosil® R974).⁵⁶ The reduced crystallization rate for the samples herein may however be related to the degree (quality) of silica dispersion and inter-particle distance in the PP matrix, as besides nucleation, well-dispersed nanosilica particles can also confine the crystallizable matter into more restricted space and reduce the mobility of crystallizing units, hence hindering the (spherulite) growth rate.⁴⁸

Quantitative silica dispersion analysis. Representative SEM-micrographs of cryo-fractured 0.5–4.5 wt% PP–silica cast films are shown in Fig. 3a. In general, the dispersion and distribution of HMDS-treated hydrophobic silica was found to be reasonably

good, forming small aggregates of ~50–70 nm in mean diameter, and with the density of silica aggregates increasing with the targeted filler content as can be expected. The chain-like aggregate structure of fumed silica is well-known to be formed during its pyrogenic production process.⁶¹ However, several silica agglomerates >100 nm were also encountered in all the nanocompounds, with the size of the largest agglomerates being in the μm range.

For statistical analysis of the dispersion, distribution and size of the silica particles, quantitative batch analysis of a large array of over 80 SEM images taken from PP-4.5-HighAO compound was carried out. The silica diameter histogram for the 4.5 wt% composite shown in Fig. 3c exhibits a right-skewed distribution shape similar to log-normal distribution with mean = 102.8 nm, median = 92.6 nm and mode = 57.2 nm. However, although these basic statistics are quite encouraging in the context of nanodielectrics, the right tail of the particle size distribution implies that there is still a need for dispersion improvement. Indeed, large micron-sized agglomerates—although relatively scarce in quantity within the studied sample area as shown in the inset of Fig. 3c—can sum up to significant density in large scale relevant to capacitor dielectric film area (up to several hundreds of m^2) which can lead to cavitation or film breakage during biaxial stretching and can deteriorate the local dielectric strength of the film. One such agglomerate with a diameter of ~3 μm is exemplified in Fig. 3b, and it is comprised of numerous closely-packed silica aggregates. The micron-sized agglomerates are suspected to originate from the production of fumed silica and subsequent hydrophobization by silane surface treatment, and despite several attempts to promote de-agglomeration during compounding by *e.g.* high-shear mixing, extensional flow mixing, repeated compounding cycles and melt-filtering it was not possible to completely eliminate them from the nanocompounds. Although the self-healing breakdown capability of metallized films can, to some extent, remedy the situation by isolating such local weak points in capacitor film application, the results point towards advancements in nanosilica de-agglomeration and dispersion being critical in order to avoid compromising film capacitor reliability and lifetime.¹⁴

On the other hand, under medium electrical–thermal stresses within the continuous operation stress regime where the breakdown probability is lower, inter-particle distance (IPD) has been shown to play a major role in charge trapping and transport properties which dictate conductivity and space charge accumulation.⁶² To support the above dispersion analysis, first nearest neighbour distance (1st NND) statistics were determined for the 4.5 wt% silica–PP composite data (Fig. 3d), providing a measure of the silica distribution and IPD variation. The average nearest-neighbour separation in a random 2D plane section through 3D array of uniformly distributed spherical particles can be estimated as:⁶³

$$l_a = r_a \left(\frac{1}{3\pi\phi} \int_0^{6\phi} \frac{\Gamma\left(\frac{1}{2}, x\right) \exp(x) dx}{(6\phi - x)^{1/2}} \right) \quad (3)$$



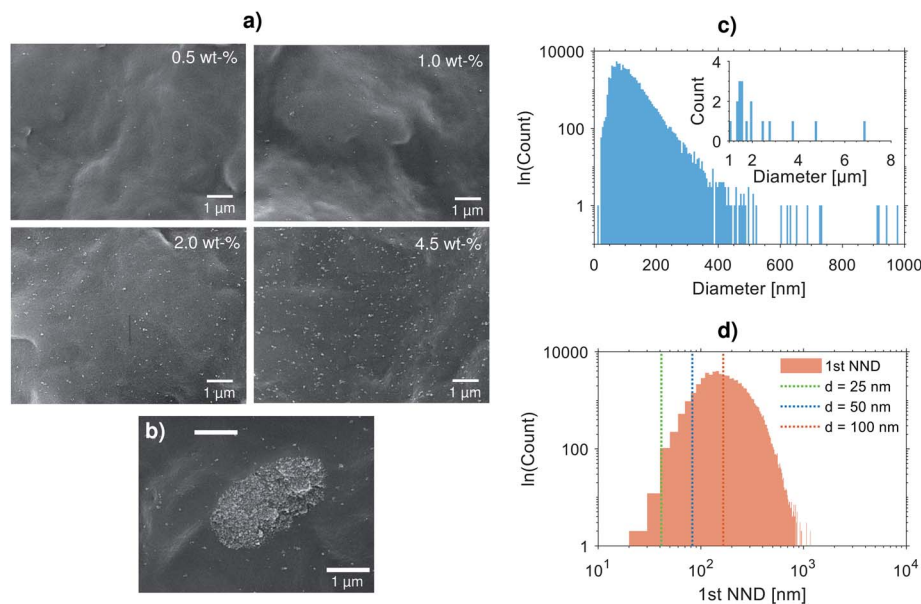


Fig. 3 a) Representative SEM micrographs of 0.5–4.5 wt% silica–PP nanocomposites (high AO content, direct mixing). (b) Example of a large silica micro-agglomerate encountered in a 2.0 wt% silica–PP composite. The histograms in (c) and (d) present the quantitative particle size and 1st nearest neighbour distance (1st NND, center-to-center) statistics of PP-4.5-HighAO composite, respectively, as determined from 83 SEM micrographs (total image area $\sim 12\,796\ \mu\text{m}^2$). The inset in (c) shows a close-up view of the right-hand tail of the histogram (μm -sized agglomerates). In (c), the vertical dashed lines are the theoretical 1st NND values of ideal 3D-monodispersions of 4.5 wt% of spherical particles with varying particle diameter.

where $r_a = (\pi/4)r$ is the average planar radius of the intersected particles, r is the particle radius, ϕ is the particle volume fraction and $\Gamma(1/2, x)$ denotes the incomplete gamma distribution with $x = 6\phi(r_a/r)^2$. Ideal (monodisperse) 1st NND separations calculated with eqn (3) for particle diameters of 25, 50 and 100 nm at 4.5 wt% silica concentration are presented for reference in Fig. 3d. The mode of the empirical 1st NND distribution falls between the 50 and 100 nm particle diameter range, being in agreement with the quantitative silica aggregate size distribution analysis above. Nevertheless, the shape of the empirical 1st NND distribution signals towards necessity for improving the distribution towards more monodisperse quality, as the histogram tails on both sides of the peak indicate inhomogeneous particle density within the polymer matrix (closely packed vs. more isolated distribution).

Space charge. Fig. 4 presents PEA space charge density profiles of selected silica–PP cast films along with an unfilled reference. It can be seen that the unfilled PP reference accumulated a substantial amount of space charge over the polarization period at 60 °C, leading to considerable electric field distortion within the bulk insulation (maximum local value was $71.6\ \text{kV}\ \text{mm}^{-1}$, corresponding to an enhancement of ~ 1.4 times the theoretical field). This substantial amount of charge accumulation is more than capable of a strong life reduction of the dielectric. Considering the inverse power model,⁶⁴ for example, it is calculated that a material characterized by a voltage endurance coefficient of 15 will reduce its life by 90% (e.g. from 30 to 3 years), when the electric field is locally increased by 20%.

The situation was however greatly improved upon inclusion of nanosilica (Fig. 4c and d), with a general trend of reducing

space charge with increasing silica content being evident (up to a nanofiller concentration limit which is generally near 5 wt%). Maximum local field enhancement is also strongly reduced, down to only 5%. Details on the amount of space charge stored in the bulk of the material, after the polarization period, and field enhancement is given in Table 1. The silica–PP nanocomposites also showed faster depolarization characteristics in comparison to neat PP; comparing the unfilled PP with the 4.5 wt% silica–PP, calculations on the charge depolarization trends indicated an increase in trap-controlled apparent mobility from $\sim 1.0 \times 10^{-14}\ \text{m}^2\ \text{V}^{-1}\ \text{s}^{-1}$ to $\sim 1.3 \times 10^{-12}\ \text{m}^2\ \text{V}^{-1}\ \text{s}^{-1}$ (for details, see Table 1 and ref. 65). Such results are indicative of reduction of trap depth and density distribution upon incorporation of nanosilica,⁶⁶ as confirmed by calculations reporting a decrease from 0.96 to 0.84 eV (see Table 1).

Characteristics of space charge accumulation were also investigated for specimens produced with the usage of a masterbatch route. Results in Fig. 4 show very mild differences in space charge accumulation and mobility of different samples, with a marginal improvement for specimens produced diluting a 4.5 wt% masterbatch during cast extrusion. All the tests reported an accumulation of charge under a poling field of $50\ \text{V}\ \mu\text{m}^{-1}$, at 60 °C, from 1.41 to $1.08\ \text{C}\ \text{m}^{-3}$, with a maximum local field enhancement from 20% to 10%. Trap depths and mobilities are estimated respectively around 0.9 eV, and in the range $0.37\text{--}0.57 \times 10^{-13}\ \text{m}^2\ \text{V}^{-1}\ \text{s}^{-1}$.

Biaxially oriented film properties

Silica-BOPP film morphology. To better understand the morphological changes taking place during the pre-heating



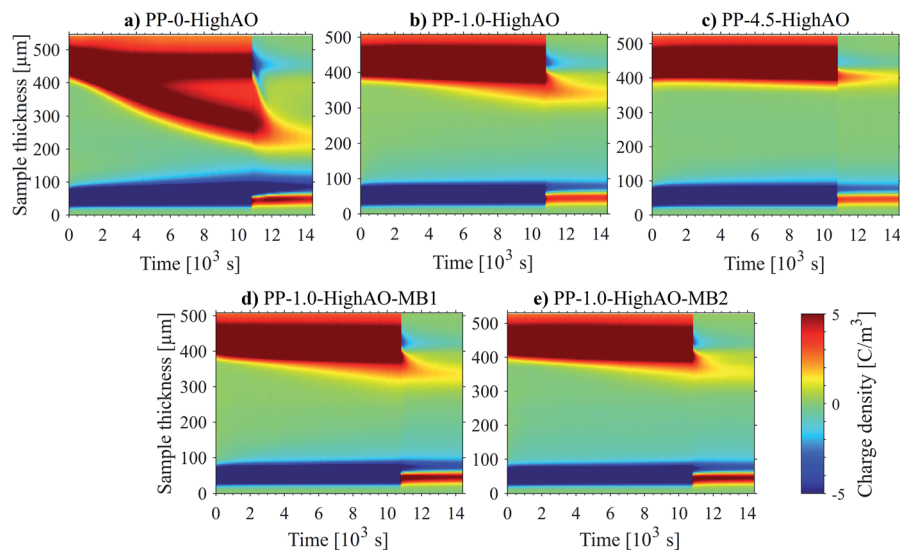


Fig. 4 PEA space charge density vs. time profiles of selected PP-silica cast films (high AO) at 60 °C. Top row shows the compounds made via direct mixing: (a) unfilled reference, (b) 1.0 wt% silica-PP, (c) 4.5 wt% silica-PP. Bottom row shows 1.0 wt% compounds made via dilution of 4.5 wt% silica-PP masterbatch during (d) compounding and (e) cast film extrusion. Polarization field ($50 \text{ V } \mu\text{m}^{-1}$) was switched off at 10 800 s.

stage before biaxial stretching of the cast film, several cast film specimens were treated by exposing them to the pre-heating conditions inside the laboratory biaxial stretching system without subsequently stretching the films. After the heat treatment the cast films were taken out from the oven and let to cool down under room temperature conditions prior to DSC measurements, see Fig. 5a. The heat-treated cast film specimens showed no traces of β -form melting peaks, and the α -form melting peak exhibited significant increase in peak temperature and reduction of the peak width. The above effects can be primarily associated with: (i) melting of the β -form crystallites and re-crystallization into α -form, (ii) lamellar thickening of the unmolten α -form crystallites (explainable by the Gibbs-Thomson equation) and (iii) increase in melting enthalpy (degree of crystallinity). These observations were consistent with the POM cross-sectional analysis of the cast films as presented in see Fig. S1c and d:† the amount of β -form spherulites (appearing brighter in comparison to α -spherulites under polarized light) and the trans-crystalline grain size within the cast film skin layers have reduced significantly. The above morphological changes became more prominent with increasing temperature, and can play a significant role for the morphology formation upon biaxial stretching.⁶⁷

Exemplifying DSC 1st heating endotherms of biaxially oriented thin films are presented in Fig. 5b along with a commercial capacitor BOPP reference: all the BOPP film melting endotherms corresponded to the monoclinic α -crystalline form PP with the peak melting temperatures in the range of 168–169 °C. For the commercial capacitor BOPP film, the main α -form melting peak also showed a low-temperature-side shoulder (α^* peak) centered around 160–163 °C, being attributable to a second α -form crystallite population being present in the film. Interestingly, the α^* peak was much less noticeable in the laboratory-scale films: this is due to the inherent differences between industrial tenter BOPP film production process⁶⁸ and (simultaneous) laboratory-scale biaxial stretching,⁴³ and it is assumed that the main α peak and the lower-temperature α^* side peak are formed during (sequential) biaxial stretching and heat setting (annealing) of the film.⁶⁹ Further, the fact that no β -form melting peak was detected in the 1st heating endotherms of BOPP films is associated with the $\beta \rightarrow \alpha$ crystal transformation which had occurred during pre-heating and biaxial stretching of the film.³ Comparing the laboratory-scale BOPP films, a slight increase in degree of crystallinity was observed for the silica-BOPP nanocomposites, increasing from 55.7% (unfilled reference) to 57.6% (4.5 wt% silica-BOPP). Overall, the observed melting endotherms and the peak

Table 1 Summary of results from measurements of PEA space charge distributions from cast film specimens. FEF: field enhancement factor

Specimen	Stored charge [C m ⁻³]	FEF	Apparent mobility [m ² V ⁻¹ s ⁻¹]	Trap depth [eV]
PP-0-HighAO	3.12	1.40	0.75×10^{-14}	0.96
PP-1-HighAO	1.41	1.21	0.37×10^{-13}	0.92
PP-4.5-HighAO	0.46	1.05	0.69×10^{-12}	0.84
PP-1-HighAO-MB1	1.25	1.14	0.39×10^{-13}	0.93
PP-1-HighAO-MB2	1.08	1.10	0.57×10^{-13}	0.91



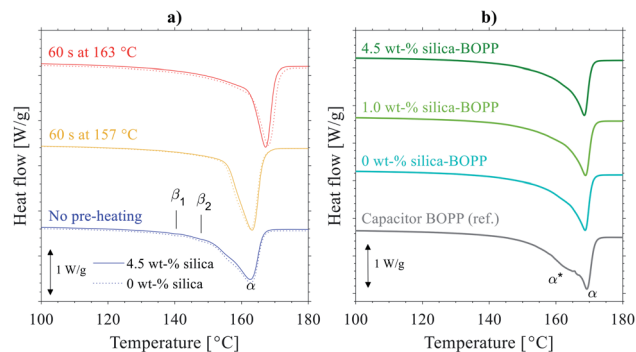


Fig. 5 (a) DSC first heating scans of 4.5 wt% silica-PP (solid) and unfilled PP (dashed) cast films before and after pre-heating (relevant to biaxial stretching) for 60 s at 157–163 °C and cooling in room temperature. (b) DSC first heating scans of biaxially oriented 0–4.5 wt% silica-PP films along with a commercial capacitor BOPP film.

melting temperature range for the silica-BOPP films were similar to the industrially manufactured tenter-line BOPP film, with no significant morphological differences observed for the silica-BOPP nanocomposites.

Silica-BOPP film structure. Fig. 6a presents an exemplifying (through-plane) OM micrograph of a 4.5 wt% silica-BOPP film

biaxially stretched at 157 °C, from which several prominent features for the biaxially stretched films can be observed. Firstly, the dark circular regions seen in the OM micrographs correspond to the crater-like surface texture of the film, a typical feature for BOPP films arising from the biaxial stretching-induced deformation of the trans-crystal grains within the skin-layer of PP cast film (see also Fig. S1†).^{3,70} A more striking feature in Fig. 6a is, however, the presence of “island-like” light-reflecting regions which can be attributed to porosity and/or voids along the stretching direction inside the BOPP film,⁴³ being an atypical and unwanted feature for capacitor films. Fig. 6b and c respectively show a higher magnification of one such void under reflected and transmitted light: particles are clearly seen in the centre of the void (especially in transmission mode), with this indicating that the void formation mechanism upon biaxial stretching may be particle-induced. While the observed particles are presumably silica agglomerates³³ (see also Fig. S4†), external particles or impurities originating from the compounding equipment or surrounding environment cannot be ruled out completely. Interestingly, similar voids were also observed within the surface layers of the unfilled reference films (Fig. 6e), pointing towards possible presence of impurities or other cavitation-inducing process during the laboratory-scale film manufacturing, as observed elsewhere.⁴³ The presence of

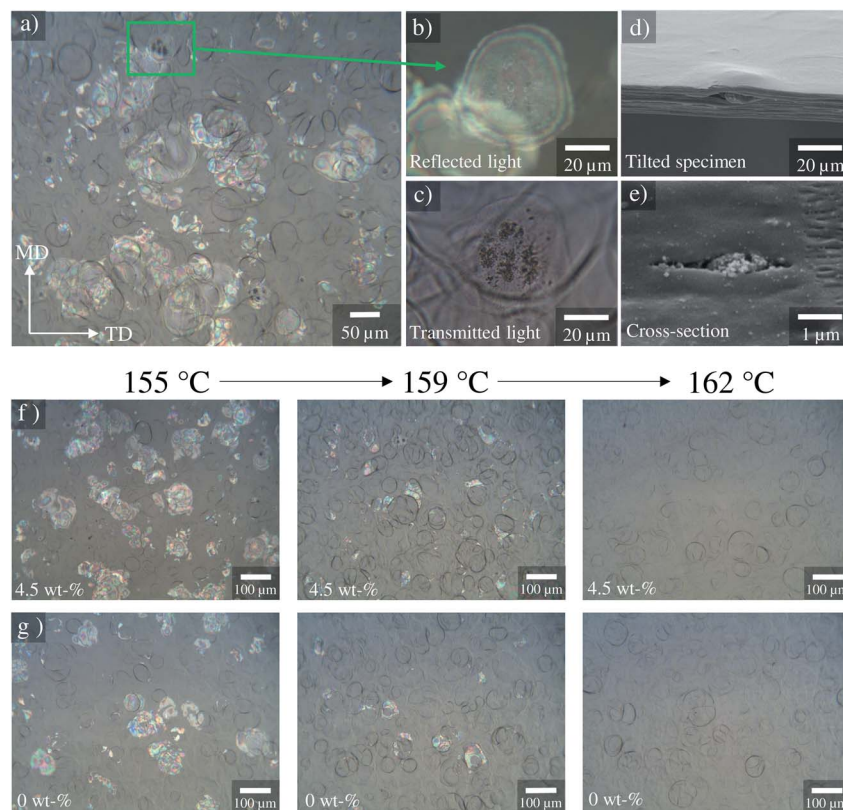


Fig. 6 a) OM image of a 4.5 wt% silica-BOPP film (PP-4.5-HighAO, stretching temperature 157 °C, stretch ratio 6.0 × 6.0). A higher magnification of the circled (green) area is shown in (b) under reflected light and in (c) under transmitted light. The cross-sectional SEM images in (d) and (e) visualize the film cavitation caused by large agglomerates. Sequential OM images in (f) and (g) present the effect of increasing pre-heating and stretching temperature (155 → 159 → 162 °C) on the BOPP film morphology for 4.5 wt% silica-BOPP and reference BOPP film, respectively. MD: machine direction, TD: transverse direction.



voids was later confirmed by SEM cross-sectional imaging of silica-BOPP specimens broken in liquid nitrogen (Fig. 6d and e): here, large silica agglomerates are seen to be contained inside such voids, whereas smaller silica aggregates (<100 nm) are seen to be well-dispersed in the PP matrix and not causing structural defects/cavitation (Fig. 6e). Clearly, a certain critical threshold for the agglomerate size exists above which the stretching-induced cavitation can occur (roughly 1 μm as evaluated from Fig. 6).⁷¹

The influence of biaxial stretching temperature (from 155 $^{\circ}\text{C}$ to 163 $^{\circ}\text{C}$) and stretch-ratio (up to 6.0×6.0) on the film morphology was studied in more detail. OM analysis of the morphological evolution of the studied silica-BOPP films under various biaxial stretching temperatures is presented in Fig. 6f and g for a 4.5 wt% silica composite and unfilled reference, respectively. Surface roughness characteristics measured from the both sides of the films using optical profilometry are presented in Fig. S2.† Finally, a comparison of machine directional (MD) stretch forces vs. stretch ratio at different temperatures is presented in Fig. S3† for a 4.5 wt% silica-BOPP composite.

At relatively low stretching temperatures (155 $^{\circ}\text{C}$) voids were clearly observable using OM imaging (Fig. 6f and g) and the stretching forces (Fig. S3†) exhibited a typical ductile deformation behavior, showing a yield region around 1.3 stretch ratio followed by neck propagation and strain hardening, being consistent with Capt.⁶⁷ As the stretching temperature was increased from 155 $^{\circ}\text{C}$, the voids observable using OM were found to gradually decrease in size and quantity until at 162 $^{\circ}\text{C}$ (close to the melting point of isotactic PP), they were eliminated completely (Fig. 6f and g). With increasing stretching temperature the stretching forces decreased and began to show quasi rubber-like deformation characteristics⁷² with no observable yield point (Fig. S3†). Simultaneously, the BOPP film surface roughness (Fig. S2†) was found to exhibit an increasing trend with the stretching temperature. The formation of crater-like surface roughness upon biaxial stretching is closely related with the spherulitic morphology and collapse of trans-crystalline surface layer in the precursor cast film.^{43,73} The increase in surface roughness with the stretching temperature is in line with Tamura *et al.*,⁷³ and can be related with the modification of the skin-layer morphology during pre-heating (see the POM cross-sectional images in Fig. S1†) and higher efficiency of the stretching-induced collapse of the crystal grain layer within the surface layers of the film. On the other hand, comparing the effect of nanosilica concentration on the surface roughness, similar or slightly lower surface roughness (between 159–163 $^{\circ}\text{C}$) was observed on the chill roll (CR) side for the 1.0–4.5 wt% silica-BOPP films in comparison to the unfilled reference BOPP, while on the opposite side of chill roll (OCR) the differences in surface roughness values were statistically mostly insignificant.

The obtained results indicate that the biaxial stretching temperature is closely related with the presence or absence of voids inside the films. We note two mechanisms which may play a role here. Firstly, following the model proposed by Qaiss *et al.*,⁷⁴ upon biaxial stretching the local stress concentration near the surface of the agglomerates/particles can result in

decohesion at the particle–matrix interface, with this resulting in the initial pore formation and subsequent development into larger voids, see Fig. 7 for a schematic representation. The size of the particles/agglomerates and the stretching conditions obviously have a significant effect in the above process,⁷⁵ as is also evidenced by the SEM-micrograph in Fig. 6e. When the biaxial stretching temperature is increased close to the melting point of the polymer, either the voided structure collapses,⁷⁴ or the movement of the polymer chains and particles along the stretching direction becomes easier,⁷⁵ hence eliminating the void formation. Indeed, the amount of molten polymer just above its melting point bearing high molecular mobility and nucleating power (“structured melt”) increases with the pre-heating/stretching temperature,⁶⁷ hence reducing the stress concentration near particulates and giving rise to *e.g.* higher degree of crystallinity. On the other hand, a second relevant mechanism for the void formation is related to the presence of β -form crystallites in the precursor cast film: this has been previously associated with stretching-induced porosity/void formation in laboratory-scale BOPP films due to inter- (β) -lamellar cavitation and volume contraction effect due to the $\beta \rightarrow \alpha$ crystal transformation.⁴³ It is however interesting that the DSC analysis of the pre-heated cast films (Fig. 5a) indicated the absence of β -form crystallinity when biaxial stretching begins: this is understandable as the pre-heating was done above the melting point of β -crystallites (>147 $^{\circ}\text{C}$). We also remark that the chill roll temperature in cast film extrusion was set so that the crystallization conditions for β -crystal formation were mostly unfavourable. Thus, the void formation for the films studied herein is presumably not dictated merely by the porosity formation related to β -crystallites,⁴⁴ but it is rather caused by a combination of the above effects. However, even though the voids are eliminated by increasing the pre-heating and biaxial stretching temperature, the agglomerates/particles still remain in the film, having an impact on the dielectric properties.⁷⁶

Permittivity and dielectric loss. Relative permittivity and dielectric loss characteristics of selected biaxially stretched 0–4.5 wt% silica-PP films as a function of temperature are presented in Fig. 8a along with a commercial state-of-the-art capacitor BOPP reference from^{18,77} The measured ϵ_r values

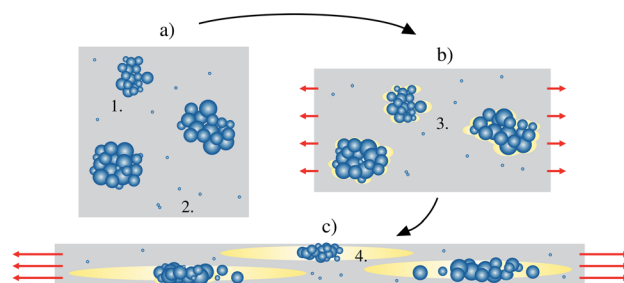


Fig. 7 Schematic description of the agglomerate-induced cavitation and void-formation mechanism in biaxially stretched silica-PP films. (not in scale) The numbered regions are: 1. micron-sized silica agglomerate, 2. silica aggregate (in the nm-range), 3. initial stress-induced pore formation, 4. enlarged void formed upon biaxial stretching.



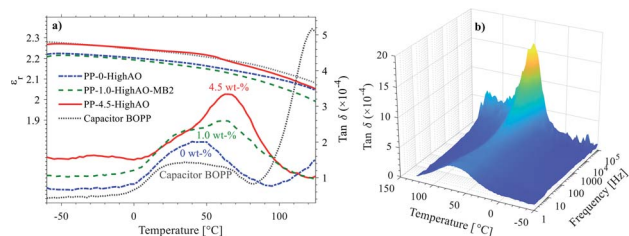


Fig. 8 a) Relative permittivity (ϵ_r) and dielectric loss ($\tan \delta$) behavior of selected reference and silica-BOPP films as a function of temperature at 1 kHz (high antioxidant content, direct mixing). (b) Temperature- and frequency-dependent dielectric loss spectra of a 4.5 wt% silica-BOPP film (PP-4.5-HighAO, stretch-ratio 6.0×6.0).

were generally within the expected range for BOPP,^{5,18} showing a slightly decreasing trend with increasing temperature from -60 °C to 125 °C. Slight variation in ϵ_r were noticed between the studied materials, which can be partly related to the HMDS-treated silica,³⁷ however assessing the role of silica and silica-PP interface on the real permittivity is challenging, as the small differences in ϵ_r observed in Fig. 8a could also be attributed to film voids (see above) or thickness measurement inaccuracy.⁷⁸ With increasing silica content, the dielectric loss spectra ($\tan \delta = \epsilon_r'/\epsilon_r''$) showed (i) a slight increase of $\tan \delta$ below the glass transition temperature T_g (approx. -5 °C, see Table S1†), (ii) appearance of a new peak at ~ 65 °C and (iii) reduction of dielectric loss at high temperatures. We attribute the slightly elevated $\tan \delta$ at lower temperature and the emergence of a new relaxation peak for the silica-PP composites to the HMDS/silica-PP interface, bulk morphology and associated changes in the electronic structure. For the unfilled BOPP, the increase in $\tan \delta$ at high temperature is likely related to the release of trapped charge and increase of DC conductivity (the effect was much pronounced at low frequencies), and this is likely an artifact related to charge injection during sample preparation (electrode evaporation). Such behavior was however mitigated for the silica-BOPP films, showing very low dielectric loss even at the highest temperatures. Fig. 8b presents the temperature- and frequency-dependent dielectric loss spectra of a 4.5 wt% silica-BOPP film, demonstrating that low dielectric loss level is maintained in the whole operation regime (note that the increase in $\tan \delta$ at the highest frequencies in the MHz range is associated with the limitation of the thin film measurement cell rather than true film properties). Overall, the $\tan \delta$ characteristics of the silica-BOPP films were found to be very promising, especially at the expected operating temperatures, as maintaining a low dielectric loss level is a prerequisite in high voltage metallized film capacitor applications.⁷⁹

Thermally stimulated depolarization current (TSDC). Fig. 9a presents the TSDC spectra of selected compounds along with a commercial capacitor BOPP film reference from^{18,77} The TSDC spectra comprise of a superposition of homo- and heterocharge components:^{80,81} in principle, the homocharge component is associated with the de-trapping of space charge formed by (bipolar) charge injection from the electrodes,^{18,82} while the heterocharge component is associated with dipolar species,⁸³

dissociation of ions⁸⁰ and, assuming that high electro-thermal stress was applied for sufficient time during the preceding poling step under high electric field, heterocharge which can be formed by slow migration of the injected homocharge towards the opposing electrode.⁸⁴ Thus, for non-polar polymers such as PP, the TSDC peak temperature and amplitude are mostly related to the depth and density of (occupied) traps. As a first approximation,⁸⁵ the TSDC temperature scale can be converted into energy scale (*cf.* trap depth) by:

$$W = k_B T \log(\nu T) \quad (4)$$

where W is the energy (trap depth), T is temperature and ν is the attempt-to-escape frequency equal to $k_B T/h$ where k_B is Boltzmann's constant and h is Planck's constant (ν is thus equal to $\sim 6.11 \times 10^{12}$ Hz at 20 °C). Trap depth scale calculated from eqn (4) is presented in Fig. 9a for reference.

For neat BOPP films, the typically observed TSDC features include:^{18,86} (i) a small heteropolar (α -) relaxation peak at -6 °C associable with de-trapping of charge from shallow traps as the polymer passes the glass-transition (*cf.* Table S1†) and (ii) a strong (bipolar) space charge (ρ -) relaxation in high temperature region (~ 100 °C) which is due to the thermal release of captured charges from deep traps. The first TSDC peak was systematically observed around T_g for all the films (trap depth ~ 0.75 eV). For the silica compounds however, the TSDC spectra above T_g became more pronounced and complex, indicating higher presence of shallow (or rather, “inter-level”⁸⁷) traps with trap depths in the 0.7–0.9 eV range in comparison to neat BOPP. In the high temperature region (~ 90 °C and above), the unfilled BOPP films exhibited strong TSDC peaks corresponding to charges released from deep traps (in the range of 1.1–1.3 eV), often being anomalous in the sense that the current flow was in the same direction as the polarization current (polarity reversal) which is a result from drifting of thermally de-trapped charge under the internal field caused by the space charge.⁸⁶ For the silica-BOPP films however, the (bipolar) TSDC intensity in the deep trap region was greatly reduced, being indicative of modification of the apparent (occupied) deep trap density with nanosilica. This effect is demonstrated for several silica-BOPP films in Fig. 9b (top) where the peak current of the hetero- and homopolar TSDC peak amplitudes are plotted as a function of silica content, showing reduction in (bipolar) peak amplitude with increasing silica content. This can also be related with the reduced conductivity for the silica-BOPP nanocomposites (see below) resulting in less charge being accumulated in the traps during the poling phase prior to TSDC measurement. Further, the deep trap peak temperature is presented in Fig. 9b (bottom) as a function of silica content, showing that the deep trap peak location (comparable to trap depth) remains relatively unaffected by silica.

The fact that polymers exhibit complex TSDC spectra comprising of several overlapping of (quasi-) continuous trap bands—along with the TSDC polarity reversal effect observed in the deep trap region in Fig. 9a—complicate the analysis and evaluation of trapping parameters (trap depth and density of occupied states) as discussed in detail elsewhere.^{86,88} Due to



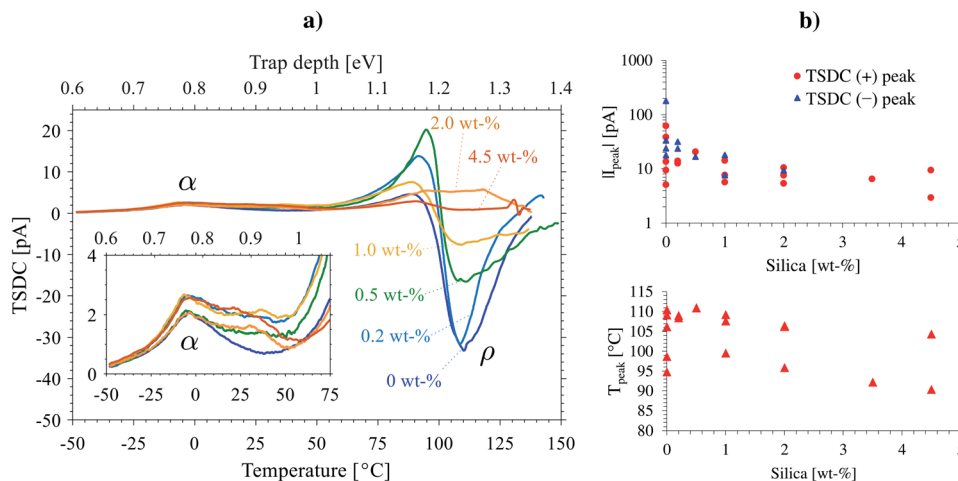


Fig. 9 a) Thermally stimulated depolarization current (TSDC) spectra of selected 0–4.5 wt% silica-BOPP films. The inset shows a closer view of the lower temperature (shallow trap) region around glass transition temperature. Trap depth scale is presented for reference, calculated from eqn (4). (b) Bipolar TSDC peak current, $|I_{\text{peak}}|$, in the deep trap region above 75 °C (top) and the deep trap peak temperature corresponding to the maximum (bipolar) TSDC peak amplitude (bottom) as a function of silica content. In top figure, the heteropolar (+) and homopolar (–) TSDC peak amplitudes are shown separately (absolute values on log-scale).

these reasons we do not attempt *e.g.* peak-fitting,⁸⁶ de-convolution^{89,90} or numerical methods^{91,92} to derive trap parameters here, as the results would be largely inconclusive.⁸⁸ Nevertheless, the TSDC results presented herein clearly indicate a modification of trap density of states (DOS) and a more homogeneous distribution of charge in the silica-containing samples, and the results are consistent with the PEA space charge depolarization behavior measured from the non-oriented cast films (Fig. 4), thereby confirming the modification of charge trapping properties also in silica-BOPP thin films.

Thermally stimulated polarization current (TSPC). Thermally stimulated polarization current (TSPC) spectra of selected 0–4.5 wt% silica-BOPP films are presented in Fig. 10 under electric fields of 100, 150 and 250 V μm^{-1} . The TSPC data in Fig. 10 indicate significant changes upon inclusion of nano-silica under moderate-to-high electric field stresses close to typical metallized film capacitor operation field stress (in the range of 200 V μm^{-1}), with increasing silica content resulting in significant reduction of the TSPC current in the high temperature region (>100 °C) and below 200 V μm^{-1} . Interestingly, at high electric field of 250 V μm^{-1} , the differences between unfilled and silica-filled BOPP films were found to diminish and the increased propensity of the silica-BOPP films to suffer dielectric breakdown at the highest stresses became evident (Fig. 10c).

Due to the lack of polar groups in the polypropylene chain, the TSPC spectra of the silica-BOPP films are mainly associated with the high-field thermally stimulated transient conductivity. In comparison to fast voltage-ramp-based resistive (pre-breakdown) current measurement methods where, unless properly compensated for by sophisticated active cancellation,⁹³ the capacitive current $i_c = C(dU/dt)$ can completely mask the (resistive) conduction current, one of the key benefits of the TSPC method is that only a minor capacitive current arises due

to the relatively slow heating rate (dT/dt of 3 °C min^{-1}) and weak temperature dependence of the sample capacitance $C(T)$. The TSPC current density j_{TSPC} is given by:⁸⁰

$$j_{\text{TSPC}} = j_c(T, E) + \frac{dP(T)}{dt} \quad (5)$$

where $j_c(T, E)$ is the temperature- and field-dependent conduction current density and $dP(T)/dt$ corresponds to the temperature dependent polarization (relative to $d(CU)/dt = (dC/dT)(dT/dt)U$). For the high-field conductivity term $j_c(T, E)$, a bulk-limited conduction model in accordance to the (inter-trap) hopping conduction process has been recently proposed for thin polymer films, for which the current density is given by:^{16,79}

$$j_c(T, E) = A \exp\left(\frac{-qW}{k_B T}\right) \times \sinh\left(\frac{\lambda qE}{2k_B T}\right) \quad (6)$$

where A is a pre-factor, q is the elementary charge, W is the trap depth, k_B is Boltzmann's constant, λ is the hopping distance and E is the electric field. In eqn (6) the first part accounts for Arrhenius-type temperature dependence while the latter part is the field-dependent term. On the other hand, the temperature dependent polarization term $dP(T)/dt$ in eqn (5) is given by:

$$\frac{dP(T)}{dt} = \varepsilon_0 \left(\frac{d\varepsilon_r(T)}{dT}\right) E \beta \quad (7)$$

where ε_0 is vacuum permittivity, $\varepsilon_r(T)$ is the temperature dependent permittivity and β is the linear heating rate. The function $\varepsilon_r(T)$, encompassing the temperature dependence of permittivity and possible dimensional changes (thermal expansion) of the sample film during heating, can be derived from the temperature-dependent dielectric spectroscopy data by polynomial fitting of ε_r (see Fig. 8), as detailed by Logakis *et al.*⁹⁴ Hence, by inserting eqn (6) and (7) into eqn (5), the TSPC current density can be expressed as:



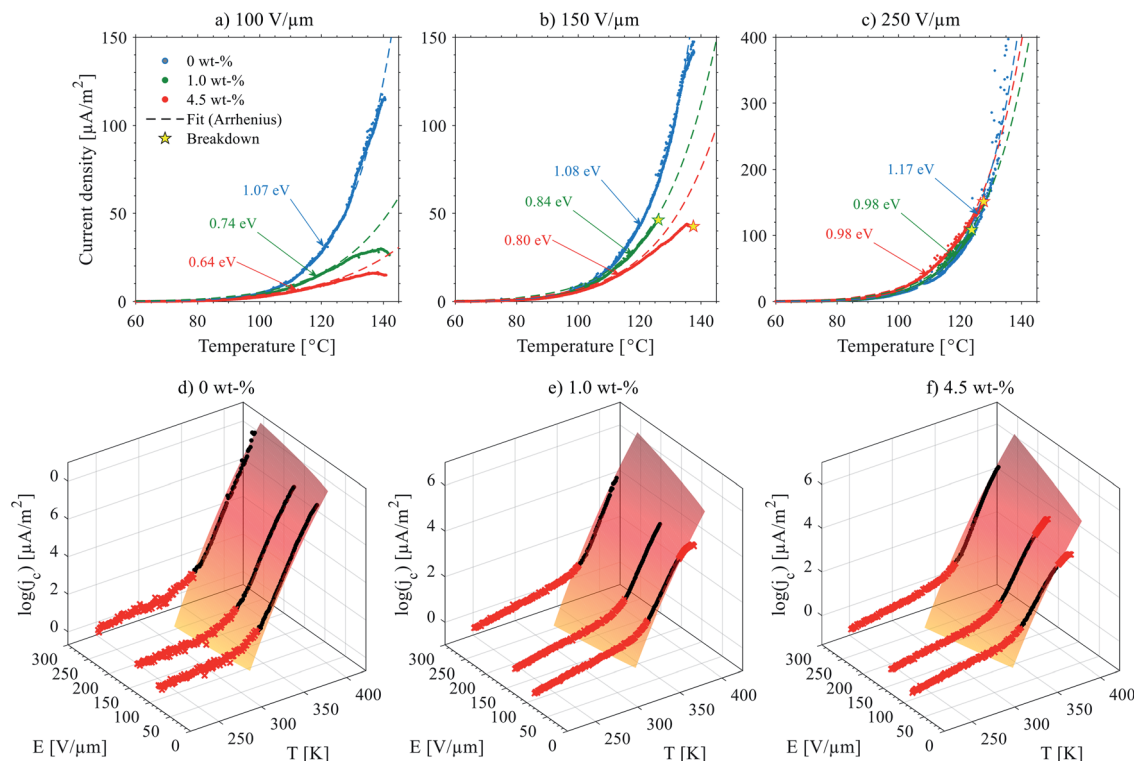


Fig. 10 (top) Thermally stimulated polarization current (TSPC) spectra of selected 0–4.5 wt% silica-BOPP films (high antioxidant content) under (a) $100 \text{ V } \mu\text{m}^{-1}$, (b) $150 \text{ V } \mu\text{m}^{-1}$ and (c) $250 \text{ V } \mu\text{m}^{-1}$ DC field. The dashed line is the fit to TSPC current density data according to eqn (5). Dielectric breakdown, if occurred during the TSPC measurement, is marked in the plot. (bottom) Temperature- and field-dependent conduction current density $j_c(T, E)$ derived from the high-field TSPC measurement of (d) 0 wt%, (e) 1.0 wt% and (f) 4.5 wt% silica-BOPP films (after subtraction of the temperature dependent polarization current density). The surface plot is the hopping-type conduction current model according to eqn (6) fitted to the main region ($>300 \text{ K}$) where the main non-linear conduction current increase is observed. The red data points were excluded from the 3D fitting procedure.

$$j_{\text{TSPC}} = A \exp\left(\frac{-qW}{k_B T}\right) \times \sinh\left(\frac{\lambda q E}{2k_B T}\right) + \varepsilon_0 \left(\frac{d\varepsilon_r(T)}{dT}\right) E \beta \quad (8)$$

which can be used for fitting of the experimental TSPC data to derive trapping parameters (trap depth W and hopping distance λ).

The conduction current density models fitted to the TSPC data in accordance to eqn (8) at a given field strength are presented in Fig. 10 (dashed lines) along with the associated trap depths (see also Table 2). Firstly, the calculated Arrhenius

activation energies (*i.e.* trap depth) increased with increasing field stress, being consistent with the observations of Li *et al.* for a tenter BOPP film in ref. 93. Secondly, incorporation of nano-silica is found to provide a significant reduction in effective trap depth (from $\sim 1.07 \text{ eV}$ of unfilled BOPP down to 0.64 eV for 4.5 wt% silica-BOPP nanocomposite at $100 \text{ V } \mu\text{m}^{-1}$), being consistent with the results derived from the PEA space charge measurement of non-stretched cast films and the TSDC results of the biaxially stretched films. Previously, Kahouli *et al.* have measured a deep trap level of 1.05 eV for neat BOPP and

Table 2 Trap parameters derived from the TSPC data by curve fitting. The numbers in parenthesis are the 95% confidence bounds

Code	Arrhenius-fit (fixed field)			Trap parameters (3D fit)			
	$E \text{ [V } \mu\text{m}^{-1}]$	$W \text{ [eV]}$		$W \text{ [eV]}$	$\lambda \text{ [nm]}$		
PP-0-HighAO	100	1.07	(1.05–1.08)	1.10	(1.09–1.12)	0.21	(0.15–0.28)
	150	1.08	(1.07–1.09)				
	250	1.17	(1.15–1.20)				
PP-1.0-HighAO	100	0.74	(0.72–0.76)	0.92	(0.90–0.94)	0.47	(0.44–0.49)
	150	0.84	(0.83–0.85)				
	250	0.98	(0.96–1.00)				
PP-4.5-HighAO	100	0.64	(0.63–0.65)	0.91	(0.88–0.94)	0.72	(0.69–0.76)
	150	0.80	(0.79–0.81)				
	250	0.98	(0.97–1.00)				



associated with ionic conduction at high temperature due to traps present in the crystalline phase;⁵ in this view, the reduced effective trap depth of 4.5 wt% silica-BOPP nanocomposite can be related to morphological changes (disorder) in polymer matrix due to nanosilica. The temperature- and field-dependent conductivity characteristics were investigated further by performing 3D fitting of eqn (8) into the TSPC spectra, see Fig. 10d. The extracted trap parameters (trap depth and mean hopping distance) are given in Table 2. The (mean) trap depths derived from the 3D fitting procedure were found to fall within the range of activation energies derived at fixed field stresses, ranging from 1.10 eV (unfilled BOPP) to ~0.9 eV (silica-BOPP), hence confirming the reduction of apparent trap depth with nanosilica. The hopping distance λ was found to increase from 0.21 nm (unfilled BOPP) to 0.72 nm (4.5 wt% silica): while hopping distance values in the similar range have also been reported previously for *e.g.* BOPP, PET and PS films,^{16,95} the values for λ derived herein are generally very low when relating them to resulting trap density (in the range of 10^{27} m^{-3} or more)^{5,15} and certainly too low to be linked with the silica inter-particle distance statistics (see Fig. 3d). Aside from the evident limitation of the hopping conduction model to fully describe the TSPC process, the most intriguing feature for the TSPC spectra of the silica-BOPP films in Fig. 10 is however the saturation (or even decrease) of the thermally stimulated conduction current at the highest temperatures of $>120 \text{ }^\circ\text{C}$ under moderate electric field stresses ($<250 \text{ V } \mu\text{m}^{-1}$), an effect which becomes more pronounced with increasing silica concentration from 1.0 to 4.5 wt%. Such anomalous behavior of conductivity cannot be explained by the present conduction model. Thorough understanding of such dynamic conduction phenomena in silica-BOPP nanocomposite would necessitate more thorough investigation by *e.g.* fluid models of charge transport, something which is not to be covered in this study.

High temperature conductivity and depolarization characteristics. Examples of the charging current *vs.* time (I - t) trends for 0–1.0 wt% silica-BOPP films under step-wise increasing electric field stress at $100 \text{ }^\circ\text{C}$ are presented in Fig. 11a. The time-dependent charging current has been transformed in Fig. 11a into apparent conductivity given by:

$$\sigma_{\text{app}}(t) = \frac{j_c(t)}{E} = \frac{i_c(t) \times d}{U \times A} \quad (9)$$

where j_c is the charging current density, E is the electric field, i_c is the charging current, d is the sample thickness, U is the voltage and A is the electrode area. It is clear that even in the time scale of several days the charging current does not reach a steady state, a typical feature for highly insulating materials. The initial high-field charging current at $100 \text{ V } \mu\text{m}^{-1}$ exhibited a slowly decaying trend characterized by an inverse power law relationship $i_c \sim t^{-n}$ with the exponent n being in the range of ~0.6, similarly as observed for commercial capacitor-grade BOPP films.^{2,96} Within the typical short-term test conditions (measurement for up to 24 h under electro-thermal stress of 80 – $100 \text{ }^\circ\text{C}$ and $100 \text{ V } \mu\text{m}^{-1}$), a decrease in apparent conductivity with increasing silica content was often observed for 0–4.5 wt% silica-BOPP films, as is demonstrated in Fig. 11a for the 1.0 wt%

silica-BOPP film (see also our previous publications^{34,36}). We associate the above decrease of bulk conductivity under moderate stresses and time to the modified (deep) trap density of states and reduced charge mobility brought by the nanosilica, as evidenced by the trap spectroscopy methods in the preceding sections. With subsequently increasing (step-wise) electric field stress up to $200 \text{ V } \mu\text{m}^{-1}$, Fig. 11a shows that there is no clear field-dependence of conductivity observable for neither the reference BOPP nor for the silica-BOPP, but rather, the apparent conductivity *vs.* time trends are dominated by a slowly decaying component. Only after increasing the field up to $250 \text{ V } \mu\text{m}^{-1}$, a weak field dependence (increase) of the charging current density became observable, until finally, the specimens suffered an abrupt dielectric breakdown after total stress duration of ~100 h (Fig. 11a). Previously, Ghorbani *et al.* have investigated the long-term conductivity behavior in polypropylene and polyethylene samples under moderate field stresses and concluded that the slowly decaying charging current is primarily associated with thermally-activated morphological changes occurring in the polymeric sample over time, being largely independent of the electric field stress.⁹⁶ From this perspective, the difference in the long-term conductivity behavior between the unfilled BOPP sample and the 1.0 wt% silica-BOPP sample in Fig. 11a may be associated with differences in slow crystallization behavior (*viz.* thermal annealing) at $100 \text{ }^\circ\text{C}$ between the samples (see also the DSC results above). In addition, Fig. 11d shows the averaged conductivity at the end of each 24 h polarization step as a function of electric field stress for selected 0–4.5 wt% silica-BOPP film samples. For the silica-nanocompounds, the step-wise DC conductivity tests indicated initially reduced conductivity in comparison to the unfilled references, but with the above difference diminishing over time and with increasing field up to $250 \text{ V } \mu\text{m}^{-1}$. These results suggest that in addition to nanosilica, the conductivity behavior under moderate-to-high electro-thermal stresses is also dependent on other additives in the compounds.

On the other hand, the isothermal depolarization current (IDC) trends recorded in-between the polarization steps, see Fig. 11b and c, exemplify the dependence of depolarization current density on the preceding polarization field stress for unfilled reference BOPP and 1.0 wt% silica-BOPP. After the initial polarization step for 24 h under $100 \text{ V } \mu\text{m}^{-1}$ at $100 \text{ }^\circ\text{C}$, both the samples showed normal IDC trends (*i.e.* with IDC having opposite polarity in comparison to the polarization current), with however slightly slower decay rate observable for the 1.0 wt% silica BOPP. Again, this can be attributed to the modified (apparent) density and depth of deep trapping sites for silica-nanocompounds. Interestingly, with subsequently increasing polarization field and (total) measurement time, an anomalous current component (*i.e.* a current component with the same polarity as the polarization current) became observable during the first 100 s of depolarization, with this effect being stronger in the unfilled reference BOPP. Recently, Hoang *et al.* have elucidated the occurrence of anomalous discharge currents (ADC) in unfilled and nano-filled LDPE samples in similar time scales by employing a bipolar charge injection model.⁸⁴ The existence of the reverse depolarization current



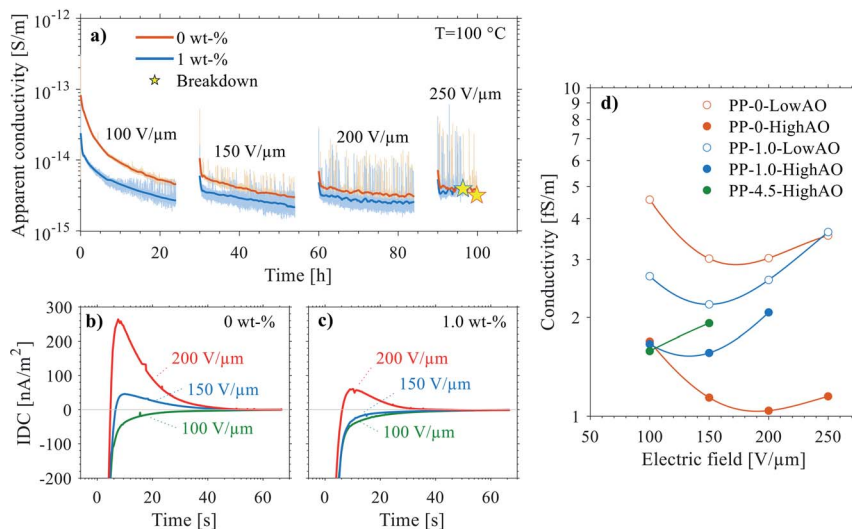


Fig. 11 a) Apparent conductivity (*cf.* charging current density) of 0 wt% and 1.0 wt% silica-BOPP films (low antioxidant content) as a function of time under step-wise increasing DC electric field (100–250 V μm^{-1}) at 100 °C. The polarization time for each field stress condition was 24 h, followed by 6 h of depolarization before application of the next field stress. The light colored traces are the raw data and the superimposed solid lines are the Savitzky–Golay filtered data to better show the underlying conductivity trend. (b) and (c) show the isothermal depolarization current density as a function of time for 0 wt% and 1.0 wt% silica-BOPP specimens after polarization at 100–250 V μm^{-1} , respectively. (d) Conductivity at the end of 24 h polarization as a function of step-wise electric field stress at 100 °C for selected 0–4.5 wt% silica-BOPP specimens. The solid lines are cubic splines to guide eyes.

component is associated with the temperature-assisted drift of charge carriers in the regions of positive and negative (internal) field formed by the accumulated space charge within the sample. Thus, the ADC behavior is similar to the polarity reversal observed under thermally stimulated conditions (TSDC), being related to the zero-field phenomenon caused by space charge.⁸⁶ In principle, the initial high density of injected charge near the electrodes causes a strong negative field and gives a rise to the negative discharge current. However, after the rapid depletion of injected charge near the electrodes, the positive discharge current component, associated with the drifting of charge trapped spatially deeper in the dielectric, becomes dominant. This imbalance between the decay rates and magnitudes of the positive and negative discharge current components gives a rise to the ADC, and it is directly linked to the trap density of states and depolarization temperature. Therefore, the mitigated ADC effect observable for the silica-BOPP film in Fig. 11c can be related to a beneficial modification of deep trap states, similarly as observed by Hoang *et al.* for LDPE/ Al_2O_3 nanocomposites.⁸⁴

Large-area multi-breakdown performance. Exemplifying room temperature DC large-area multi-breakdown distributions of selected 0–4.5 wt% silica-BOPP films are presented in Fig. 12a (mean film thickness 6.7 μm). The empirical multi-breakdown data sets were fitted with 2-parameter Weibull distribution for which the failure (breakdown) probability is given by:

$$F(x) = 1 - \exp\left\{-\left(\frac{x}{\alpha}\right)^\beta\right\} \quad (10)$$

where x is the breakdown voltage (≥ 0), α is the scale parameter corresponding to the breakdown field at 63.2% breakdown

probability, and β is the shape parameter related to the distribution homogeneity with high Weibull β indicating less scatter in the data. For the unfilled reference film with a mean thickness of 5.9 μm the Weibull α and β parameters were 702 V μm^{-1} and 14.8, respectively, being well in line with the typical short-term DC breakdown strength of commercial capacitor grade BOPP.^{2,97,98} On the other hand, it is evident from Fig. 12a that with increasing silica content the large-area Weibull breakdown strength parameters gradually decreased, reaching 596 V μm^{-1} (Weibull α) and 10.1 (Weibull β) for the 4.5 wt% silica-BOPP nanocomposite. Interestingly, the 1.0 wt% silica-BOPP nanocomposite prepared *via* the masterbatch route (dilution of 4.5 wt% masterbatch during cast film extrusion step) exhibited a slightly higher breakdown strength in comparison to the 1.0 wt% variant prepared *via* direct mixing route. It is remarked that even though HMDS-treated silica has been previously shown to result in small-area dielectric strength improvement of BOPP,^{33,37} the large-area dielectric strength results presented herein can provide a more realistic picture of the breakdown performance in film capacitor operation due to the area effect.

Several laboratory-scale compounding and film production trials were performed during which aspects related to mixing and de-agglomeration efficiency, cast film extrusion and biaxial stretching parameters were studied: these data are summarized for relative change of large-area DBS in Fig. 12b, and for thickness-dependence of the Weibull β parameter in Fig. 12c. It is evident from Fig. 12b that, in comparison to unfilled reference BOPP, a similar decreasing trend in large-area dielectric breakdown strength with increasing silica concentration was prominent for all the silica-BOPP variants in 5–17 μm thickness



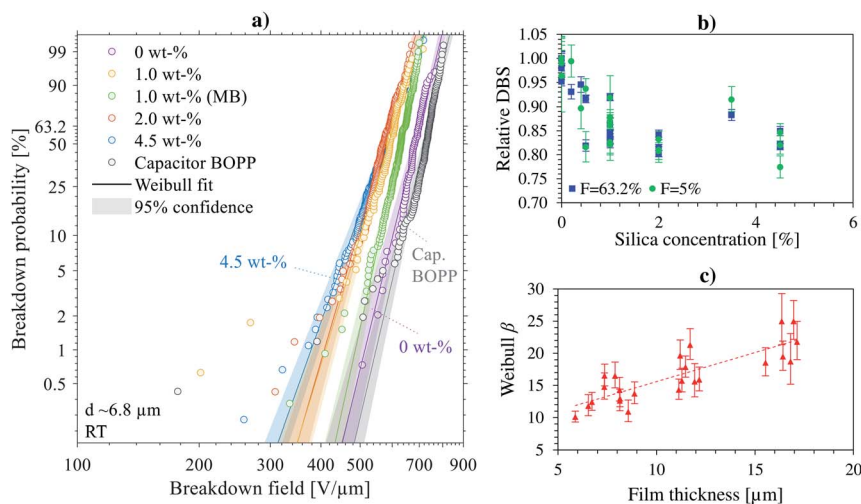


Fig. 12 a) Exemplifying room temperature DC large-area multi-breakdown distributions of selected 0–4.5 wt% silica-BOPP films (high antioxidant content) on Weibull scale. Biaxial stretching ratio was 6.0×6.0 and stretching temperature was 161°C . The solid lines and the shaded areas are the 2-parameter Weibull fits and the 95% confidence bounds, respectively. The mean film thickness is $\sim 6.8\ \mu\text{m}$. (b) Relative dielectric breakdown strength (DBS) at 5% and 63.2% breakdown probabilities (relative to unfilled reference) for various 0–4.5 wt% silica-BOPP films with varying film thickness and processing. (c) Dependence of 2-p Weibull β parameter on mean BOPP film thickness. The error bars in (b) and (c) denote 90% confidence.

range. Moreover, a clear decrease of the Weibull β parameter with decreasing BOPP film thickness is evident from Fig. 12c, highlighting the increasingly detrimental role of agglomerates and the challenge of producing defect-free nanocomposite thin films when the material is pushed (or stretched) to its limits.³⁹ Analogous to the weakest-link-type failure mechanism, the increased local breakdown propensity due to the non-ideal silica dispersion and the presence of micron-sized agglomerates can mask the otherwise beneficial bulk-type properties brought by the nanosilica (such as modified trap DOS, reduced conductivity and mitigated space charge) both in short-term progressive-stress dielectric breakdown tests (reaching extreme field conditions)³³ as well as in medium-to long-term voltage endurance and ageing tests under accelerated electrical and thermal stresses.^{14,99,100} Preliminary electro-thermal ageing test results from similar silica-BOPP nanocomposite films produced in industrial scale are presented in another study.⁹⁹

Conclusions

Pilot-scale capacitor PP nanocomposite films incorporating hydrophobic fumed silica nanoparticles were prepared *via* an industrially relevant melt-blending, film extrusion and biaxial stretching approach, and comprehensive investigation of processing–structure–property relationships was carried out to provide a critical evaluation of the performance potential and current technological limitations of state-of-the-art silica-BOPP nanocomposite films aimed for HVDC film capacitor applications. Incorporation of fumed nanosilica can bring about promising bulk dielectric property modifications under moderate electro-thermal stresses (up to $\sim 200\ \text{V}\ \mu\text{m}^{-1}$ at 100°C) including decreased high field/high temperature

conductivity, modification of the trap density of states, low dielectric losses and reduced space charge accumulation, all being beneficial property enhancements for metallized film capacitor applications. However, further improvement of nanoparticle dispersion and film morphology are still seen necessary as film structural defects (voids) and localized electrical weak points caused by silica agglomerates can deteriorate the nanocomposite film performance under high electro-thermal stress. Achieving homogeneous morphology in biaxially oriented thin films is perhaps one of the most challenging tasks in the field of dielectric nanocomposites at the moment limiting, as issues such as nanoparticle agglomeration and structural inhomogeneities (*e.g.* cavities) become increasingly critical as the film thickness is decreased and the material is pushed to its limits, hence limiting industrial scale application.

Author contributions

I. R. conceived the overall design, characterization, analysis and manuscript writing with support and comments from the other authors. I. R., E. S., T. F. and M. P. performed the material compounding and sample manufacturing at VTT. I. R. conducted the morphological characterization and analysis. P. S. and H. N. performed the PEA characterization for cast films at University of Bologna. I. R., M. N. and K. L. performed the thin film dielectric characterization at Tampere University. I. R. performed formal data analysis. M. P. was responsible for the project funding acquisition and supervision.

Conflicts of interest

There are no conflicts to declare.



Acknowledgements

This project has received funding from the European Union's Horizon 2020 research and innovation programme under grant agreement No 720858.

References

- 1 Y. Tang, L. Ran, O. Alatisse and P. Mawby, *IEEE Trans. Ind. Appl.*, 2016, **52**, 3279–3293.
- 2 M. Ritamäki, I. Rytöluoto and K. Lahti, *IEEE Trans. Dielectr. Electr. Insul.*, 2019, **26**, 1229–1237.
- 3 I. Rytöluoto, A. Gitsas, S. Pasanen and K. Lahti, *Eur. Polym. J.*, 2017, **95**, 606–624.
- 4 M. DeMeuse, *Biaxial Stretching of Film*, Woodhead Publishing Limited, Cambridge, 1st edn, 2011.
- 5 A. Kahouli, O. Gallot-Lavallée, P. Rain, O. Lesaint, C. Guillermin and J.-M. Lupin, *J. Appl. Polym. Sci.*, 2015, **132**, 42224.
- 6 *European Plastics Innovation Awards*, 2016.
- 7 X. Qi, Z. Zheng and S. Boggs, *IEEE Electr. Insul. Mag.*, 2004, **20**, 27–34.
- 8 S. J. Laihonon, U. Gäfvert, T. Schütte and U. W. Gedde, *IEEE Trans. Dielectr. Electr. Insul.*, 2007, **14**, 275–286.
- 9 V. O. Belko, O. A. Emelyanov, I. O. Ivanov and A. P. Plotnikov, *IEEE Trans. Plasma Sci.*, 2021, **49**, 1580–1587.
- 10 H. Li, Y. Zhou, Y. Liu, L. Li, Y. Liu and Q. Wang, *Chem. Soc. Rev.*, 2021, **50**, 6369–6400.
- 11 M. A. Schneider, J. R. Macdonald, M. C. Schalnath and J. B. Ennis, in *Proceedings of the 2012 IEEE International Power Modulator and High Voltage Conference, IPMHVC 2012*, 2012, pp. 284–287.
- 12 J. S. Ho and S. G. Greenbaum, *ACS Appl. Mater. Interfaces*, 2018, **10**, 29189–29218.
- 13 F. Zheng, Y. Miao, J. Dong, Z. An, Q. Lei and Y. Zhang, *IEEE Trans. Dielectr. Electr. Insul.*, 2016, **23**, 3102–3107.
- 14 M. Ritamäki, I. Rytöluoto, K. Lahti, T. Vestberg, S. Pasanen and T. Flyktman, *IEEE Trans. Dielectr. Electr. Insul.*, 2017, **24**, 826–836.
- 15 J. Ho and T. R. Jow, *IEEE Trans. Dielectr. Electr. Insul.*, 2012, **19**, 990–995.
- 16 Z. Li, H. Uehara, R. Ramprasad, S. Boggs and Y. Cao, in *2015 IEEE Conference on Electrical Insulation and Dielectric Phenomena (CEIDP)*, IEEE, 2015, pp. 872–875.
- 17 H. Li, L. Li, L. Li, W. Wang, X. Huang, Q. Chen and F. Lin, *IEEE Trans. Dielectr. Electr. Insul.*, 2017, **24**, 1870–1877.
- 18 M. Ritamäki, I. Rytöluoto and K. Lahti, *IEEE Trans. Dielectr. Electr. Insul.*, 2019, **26**, 1229–1237.
- 19 M. Ritamäki, I. Rytöluoto and K. Lahti, in *2018 IEEE International Conference on Dielectrics (ICD)*, 2018.
- 20 Z. Wang, Y. Zhang, H. Wang and F. Blaabjerg, *IEEE Trans. Power Electron.*, 2020, **35**, 5589–5593.
- 21 L. Chen, R. Ramprasad, R. Batra, R. Ranganathan, G. Sotzing and Y. Cao, *Chem. Mater.*, 2018, **30**, 7699–7706.
- 22 H.-V. Nguyen and T. H. Pham, *Phys. Status Solidi*, 2017, **1700036**.
- 23 S. K. Kumar, B. C. Benicewicz, R. A. Vaia and K. I. Winey, *Macromolecules*, 2017, **50**, 714–731.
- 24 H. Luo, X. Zhou, C. Ellingford, Y. Zhang, S. Chen, K. Zhou, D. Zhang, C. R. Bowen and C. Wan, *Chem. Soc. Rev.*, 2019, **48**, 4424–4465.
- 25 X. He, I. Rytöluoto, R. Anyszka, A. Mahtabani, E. Saarimäki, K. Lahti, M. Paajanen, W. Dierkes and A. Blume, *IEEE Access*, 2020, **8**, 87719–87734.
- 26 A. Mahtabani, I. Rytöluoto, R. Anyszka, X. He, E. Saarimäki, K. Lahti, M. Paajanen, W. Dierkes and A. Blume, *ACS Appl. Polym. Mater.*, 2020, **2**, 3148–3160.
- 27 D. Tan, L. Zhang, Q. Chen and P. Irwin, *J. Electron. Mater.*, 2014, **43**, 4569–4575.
- 28 L. An, S. A. Boggs and J. P. Calame, *Proc. 2008 IEEE Int. Power Modul. High Volt. Conf. PMHVC*, 2008, vol. 24, pp. 552–555.
- 29 G. Zhang, D. Brannum, D. Dong, L. Tang, E. Allahyarov, S. Tang, K. Kodweis, J.-K. Lee and L. Zhu, *Chem. Mater.*, 2016, **28**, 4646–4660.
- 30 B. Liu, M. Yang, W. Y. Zhou, H. W. Cai, S. L. Zhong, M. S. Zheng and Z. M. Dang, *Energy Storage Mater.*, 2020, **27**, 443–452.
- 31 W. Liu, L. Cheng and S. Li, *Compos. Commun.*, 2018, **10**, 221–225.
- 32 M. Streibl, R. Karmazin and R. Moos, *IEEE Trans. Dielectr. Electr. Insul.*, 2018, **25**, 2429–2442.
- 33 I. Rytöluoto, K. Lahti, M. Karttunen, M. Koponen, S. Virtanen and M. Pettersson, *IEEE Trans. Dielectr. Electr. Insul.*, 2015, **22**, 2196–2206.
- 34 I. Rytöluoto, M. Ritamäki, K. Lahti, M. Paajanen, M. Karttunen, G. C. Montanari, P. Seri and H. Naderiallaf, in *2018 IEEE 2nd International Conference on Dielectrics (ICD)*, IEEE, Budapest, Hungary, 2018, pp. 1–4.
- 35 G. C. Montanari, P. Seri, M. Paajanen, K. Lahti, I. Rytöluoto, M. Ritamäki, A. Blume, W. Dierkes, A. Mahtabani and X. He, in *IEEE International Conference on Dielectrics (ICD)*, IEEE, Budapest, 2018.
- 36 I. Rytöluoto, M. Niittymäki, K. Lahti, E. Saarimäki, T. Flyktman, M. Paajanen and M. Karttunen, *Proc. Nord. Insul. Symp.*, 2019, pp. 123–128.
- 37 M. Streibl, S. Werner, J. Kaschta, D. W. Schubert and R. Moos, *IEEE Trans. Dielectr. Electr. Insul.*, 2020, **27**, 468–475.
- 38 M. Takala, H. Ranta, P. Nevalainen, P. Pakonen, J. Pelto, M. Karttunen, S. Virtanen, V. Koivu, M. Pettersson, B. Sonnerud and K. Kannus, *IEEE Trans. Dielectr. Electr. Insul.*, 2010, **17**, 1259–1267.
- 39 D. Q. Tan, *Adv. Funct. Mater.*, 2019, **1808567**, 1–23.
- 40 S. Werner, J. Kaschta and D. W. Schubert, in *ETG-Symposium VDE High Voltage Technology*, 2020, pp. 1–8.
- 41 F. J. Lanyi, N. Wenzke, J. Kaschta and D. W. Schubert, *Adv. Eng. Mater.*, 2020, **22**, 1900796.
- 42 I. Rytöluoto, K. Lahti, M. Karttunen and M. Koponen, *IEEE Trans. Dielectr. Electr. Insul.*, 2015, **22**, 689–700.
- 43 I. Rytöluoto, A. Gitsas, S. Pasanen and K. Lahti, *Eur. Polym. J.*, 2017, **95**, 606–624.



- 44 G. T. Offord, S. R. Armstrong, B. D. Freeman, E. Baer, A. Hiltner, J. S. Swinnea and D. R. Paul, *Polymer*, 2013, **54**, 2577–2589.
- 45 G. T. Offord, S. R. Armstrong, B. D. Freeman, E. Baer, A. Hiltner and D. R. Paul, *Polymer*, 2013, **54**, 2796–2807.
- 46 Y. Yamamoto, Y. Inoue, T. Onai, C. Doshu, H. Takahashi and H. Uehara, *Macromolecules*, 2007, **40**, 2745–2750.
- 47 P. Jacoby, *Beta Nucleation of Polypropylene – Properties, Technology, and Applications*, William Andrew, PDL handbook series, 1st edn, 2013.
- 48 K. H. Nitta, K. Asuka, B. Liu and M. Terano, *Polymer*, 2006, **47**, 6457–6463.
- 49 D. N. Bikiaris, G. Z. Papageorgiou, E. Pavlidou, N. Vouroutzis, P. Palatzoglou and G. P. Karayannidis, *J. Appl. Polym. Sci.*, 2006, **100**, 2684–2696.
- 50 S. H. Kim, S. H. Ahn and T. Hirai, *Polymer*, 2003, **44**, 5625–5634.
- 51 S. J. Laihonon and H. Greijer, *Proc. Nord. Insul. Symp.*, 2019, pp. 37–42.
- 52 M. Xiao, B. Du, R. Xu, Z. Ran, H. Liu, J. Xing and K. Fan, in *Polymer Insulation Applied for HVDC Transmission*, Springer Singapore, Singapore, 2021, pp. 627–651.
- 53 R. R. Xu, B. X. Du, M. Xiao, J. Li, H. L. Liu, Z. Y. Ran and J. W. Xing, *Polymer*, 2021, **213**, 123204.
- 54 Z. Y. Ran, B. X. Du, M. Xiao, H. L. Liu and J. W. Xing, *IEEE Trans. Dielectr. Electr. Insul.*, 2021, **28**, 175–182.
- 55 J. L. Nash, *Polym. Eng. Sci.*, 1988, **28**, 862–870.
- 56 G. Z. Papageorgiou, D. S. Achilias, D. N. Bikiaris and G. P. Karayannidis, *Thermochim. Acta*, 2005, **427**, 117–128.
- 57 X. Cao, M. Wu, A. Zhou, Y. Wang, X. He and L. Wang, *e-Polym.*, 2017, **17**, 373–381.
- 58 X. Liu and Q. Wu, *Eur. Polym. J.*, 2002, **38**, 1383–1389.
- 59 S. Jain, H. Goossens, M. Van Duin and P. Lemstra, *Polymer*, 2005, **46**, 8805–8818.
- 60 S. Zhou, W. Wang, Z. Xin, S. Zhao and Y. Shi, *J. Mater. Sci.*, 2016, **51**, 5598–5608.
- 61 Evonik Industries – AEROSIL® – Fumed Silica: Technical Overview, 2015, pp. 1–104.
- 62 A. M. Pourrahimi, R. T. Olsson and M. S. Hedenqvist, *Adv. Mater.*, 2017, **1703624**, 1703624.
- 63 P. P. Bansal and A. J. Ardell, *Metallography*, 1972, **5**, 97–111.
- 64 L. Simoni, *IEEE Trans. Electr. Insul.*, 1982, **EI-17**, 375.
- 65 G. Mazzanti, G. C. Montanari and J. M. Alison, *IEEE Trans. Dielectr. Electr. Insul.*, 2003, **10**, 187–197.
- 66 G. C. Montanari, P. Seri, M. Ritamäki, K. Lahti, I. Rytöluoto and M. Paajanen, *Proc. IEEE Int. Conf. Prop. Appl. Dielectr. Mater.*, 2018, pp. 41–44.
- 67 L. Capt, Simultaneous biaxial stretching of isotactic polypropylene films in the partly molten state, PhD thesis, McGill University, 2003.
- 68 J. Breil, in *Film Processing Advances*, ed. T. Kanai and G. A. Campbell, Hanser, München, 2014, pp. 193–229.
- 69 M. B. Elias, R. Machado and S. V. Canevarolo, *J. Therm. Anal. Calorim.*, 2000, **59**, 143–155.
- 70 S. Tamura and T. Kanai, *J. Appl. Polym. Sci.*, 2013, **130**, 3555–3564.
- 71 S. Sänglerlaub, M. Böhmer and C. Stramm, *J. Appl. Polym. Sci.*, 2013, **129**, 1238–1248.
- 72 D. Gloger, E. Rossegger, M. Gahleitner and C. Wagner, *J. Polym. Eng.*, 2019, 1–10.
- 73 S. Tamura, K. Ohta and T. Kanai, *J. Appl. Polym. Sci.*, 2012, **124**, 2725–2735.
- 74 A. Qaiss, H. Saidi, O. Fassi-Fehri and M. Bousmina, *J. Appl. Polym. Sci.*, 2012, **123**, 3425–3436.
- 75 X. Zhang, Q. Xing, R. Li, R. Wang and D. Wang, *Chin. J. Polym. Sci.*, 2013, **31**, 275–284.
- 76 X. Qiu, F. Groth, W. Wirges and R. Gerhard, *IEEE Trans. Dielectr. Electr. Insul.*, 2018, **25**, 829–834.
- 77 I. Rytöluoto, M. Ritamäki and K. Lahti, in *2018 12th International Conference on the Properties and Applications of Dielectric Materials (ICPADM)*, IEEE, 2018, pp. 289–292.
- 78 I. Rytöluoto, M. Ritamäki, A. Gitsas, S. Pasanen and K. Lahti, in *Proceedings of the Nordic Insulation Symposium*, 2017, DOI: 10.5324/nordis.v0i25.2359.
- 79 T. D. Huan, S. Boggs, G. Teyssedre, C. Laurent, M. Cakmak, S. Kumar and R. Ramprasad, *Prog. Mater. Sci.*, 2016, **83**, 236–269.
- 80 *Electrets*, ed., G. M. Sessler, Springer Berlin Heidelberg, Berlin, Heidelberg, 1987, vol. 33.
- 81 J. Belana, J. A. Diego, J. Orrit, I. Tamayo and M. Mudarra, *IEEE Trans. Dielectr. Electr. Insul.*, 2011, **18**, 2074–2082.
- 82 S. Le Roy, F. Baudoin, L. Boudou, C. Laurent and G. Teyssède, in *Proceedings of the 2010 IEEE International Conference on Solid Dielectrics, ICSD 2010*, 2010, pp. 4–7.
- 83 F. Namouchi, W. Jilani and H. Guermazi, *J. Non-Cryst. Solids*, 2015, **427**, 76–82.
- 84 A. T. Hoang, Y. V. Serdyuk and S. M. Gubanski, *Energies*, 2020, **13**, 1518.
- 85 M. Meunier and N. Quirke, *J. Chem. Phys.*, 2000, **113**, 369–376.
- 86 I. Rytöluoto, M. Niittymäki and K. Lahti, *Proc. Nord. Insul. Symp.*, 2019, pp. 64–69.
- 87 E. Doedens, E. M. Jarvid, R. Guffond and Y. V. Serdyuk, *Energies*, 2020, **13**, 1750.
- 88 G. Teyssedre, F. Zheng, L. Boudou and C. Laurent, *J. Phys. D: Appl. Phys.*, 2021, 12.
- 89 M. Aldana, E. Laredo, A. Bello and N. Suarez, *J. Polym. Sci., Part B: Polym. Phys.*, 1994, **32**, 2197–2206.
- 90 Y. Wang, J. Wu and Y. Yin, *IEEE Trans. Dielectr. Electr. Insul.*, 2017, **24**, 3138–3143.
- 91 F. Tian, W. Bu, L. Shi, C. Yang, Y. Wang and Q. Lei, *J. Electrostat.*, 2011, **69**, 7–10.
- 92 J. G. Simmons, G. W. Taylor and M. C. Tam, *Phys. Rev. B: Solid State*, 1973, **7**, 3714–3719.
- 93 Z. Li, C. Xu, H. Uehara, S. Boggs and Y. Cao, *AIP Adv.*, 2016, **6**, 115025.
- 94 E. Logakis, L. Herrmann and T. Christen, *IEEE Trans. Dielectr. Electr. Insul.*, 2016, **23**, 142–148.
- 95 H. Li, Z. Li, F. Lin, D. Liu, B. Wang, Y. Chen, L. Dai and S. Fan, *J. Electrostat.*, 2013, **71**, 958–962.
- 96 H. Ghorbani, T. Christen, M. Carlen, E. Logakis, L. Herrmann, H. Hillborg, L. Petersson and J. Viertel, *IEEE Trans. Dielectr. Electr. Insul.*, 2017, **24**, 1485–1493.



- 97 C. Xu, J. Ho and S. A. Boggs, *IEEE Electr. Insul. Mag.*, 2008, **24**, 30–34.
- 98 S. J. Laihonon, A. Gustafsson, U. Gäfvert, T. Schütte and U. W. Gedde, *IEEE Trans. Dielectr. Electr. Insul.*, 2007, **14**, 263–274.
- 99 K. Lahti, I. Rytöluoto, M. Niittymäki, E. Saarimäki and M. Paajanen, in *IEEE International Conference on Dielectrics*, 2020, pp. 661–664.
- 100 I. Rytöluoto, M. Ritamäki, K. Lahti and M. Karttunen, in *2015 IEEE 11th International Conference on the Properties and Applications of Dielectric Materials (ICPADM)*, 2015.

