

Legend to Supplementary Figures

Figure S1. Kaplan-Meier estimates of progression-free survival (PFS), according to WHO categories of body mass index (BMI Kg/m²) in the CheckMate 205 study population. **(A)** PFS for all cohorts (A+B+C+D); **(B)** PFS for cohorts A+B+C; **(C)** PFS for cohort D.

Figure S2. Kaplan-Meier estimates for the duration of response (DoR), according to WHO categories of body mass index (BMI Kg/m²) in the CheckMate 205 study population. **(A)** DoR for all cohorts (A+B+C+D); **(B)** DoR for cohorts A+B+C; **(C)** DoR for cohort D.

Figure S3. Kaplan-Meier estimates of overall survival (OS), according to WHO categories of body mass index (BMI Kg/m²) in the CheckMate 205 study population. **(A)** OS for all cohorts (A+B+C+D); **(B)** OS for cohorts A+B+C; **(C)** OS for cohort D.

Figure S4. Association of Programmed death ligand-1 (PD-L1) expression in lymph node tumor cells and genetic alterations of 9p24.1, in 126 patients of the CheckMate 205 study. Patients were stratified by the best PD-L1 cut-off value of 90% as determined by ROC analysis for predicting PFS. P=0.011 by Pearson Chi-square.

Figure S5. Kaplan–Meier survival estimates of progression-free survival (PFS), according to genetic status of the 9p24.1 locus in 128 patients of the CheckMate 205 study.

Figure S6. Forest plot of Cox univariate analysis for progression-free survival (PFS) according to clinical characteristics at nivolumab initiation.

Figure S1

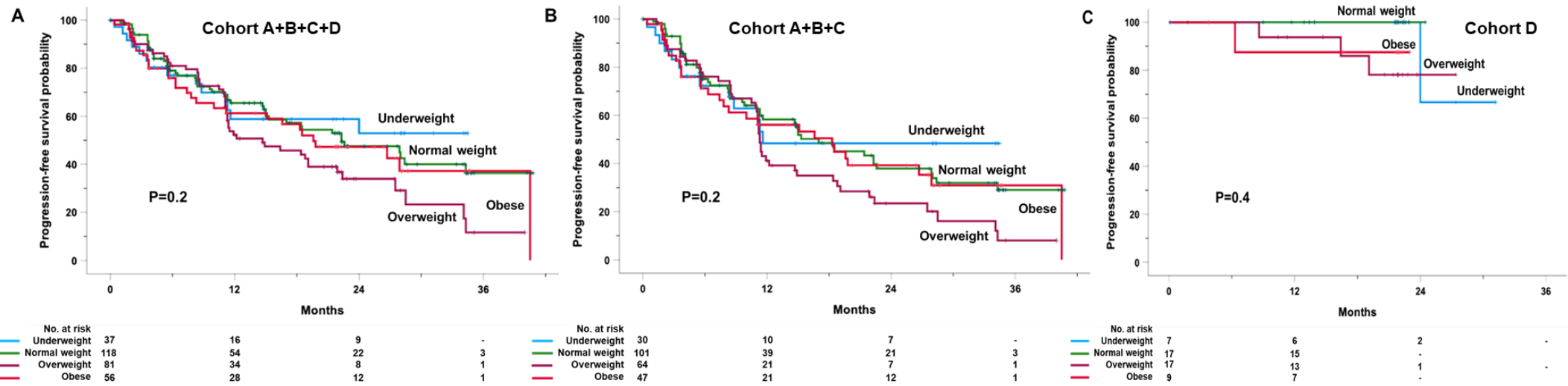


Figure S2

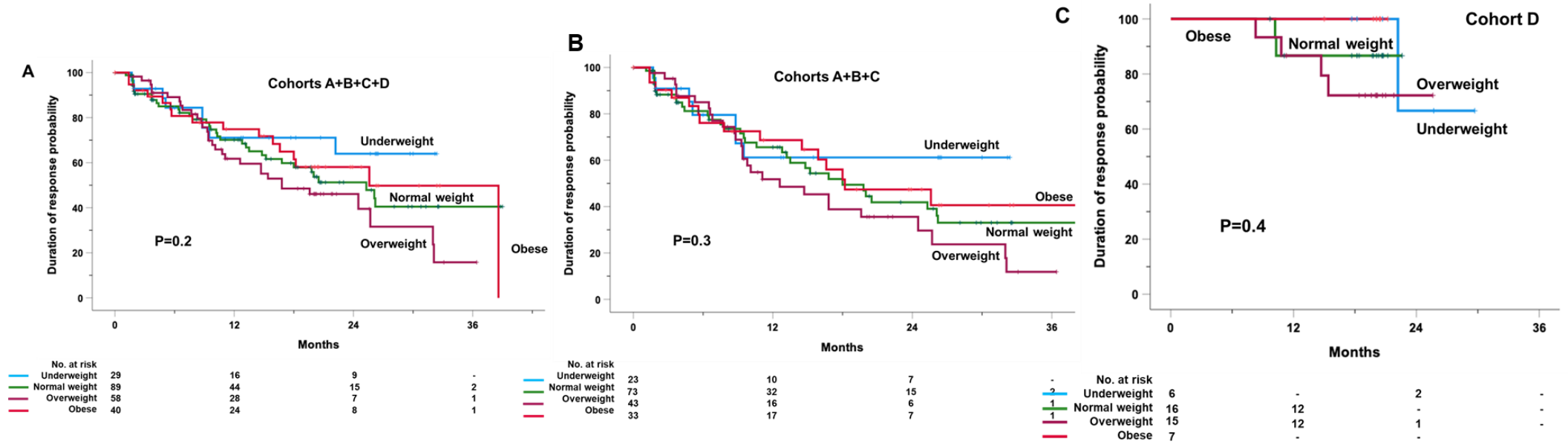


Figure S3A

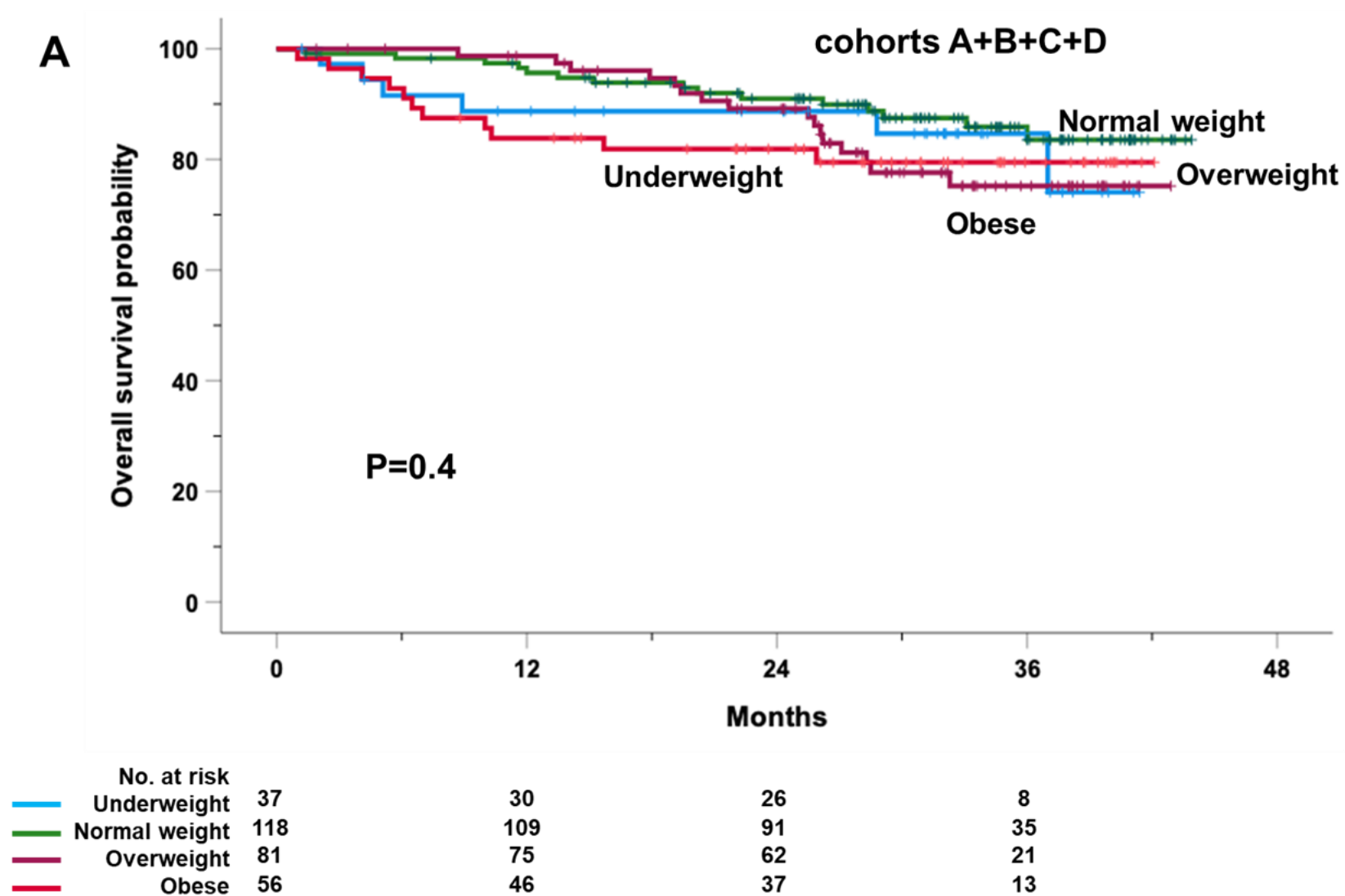


Figure S3B

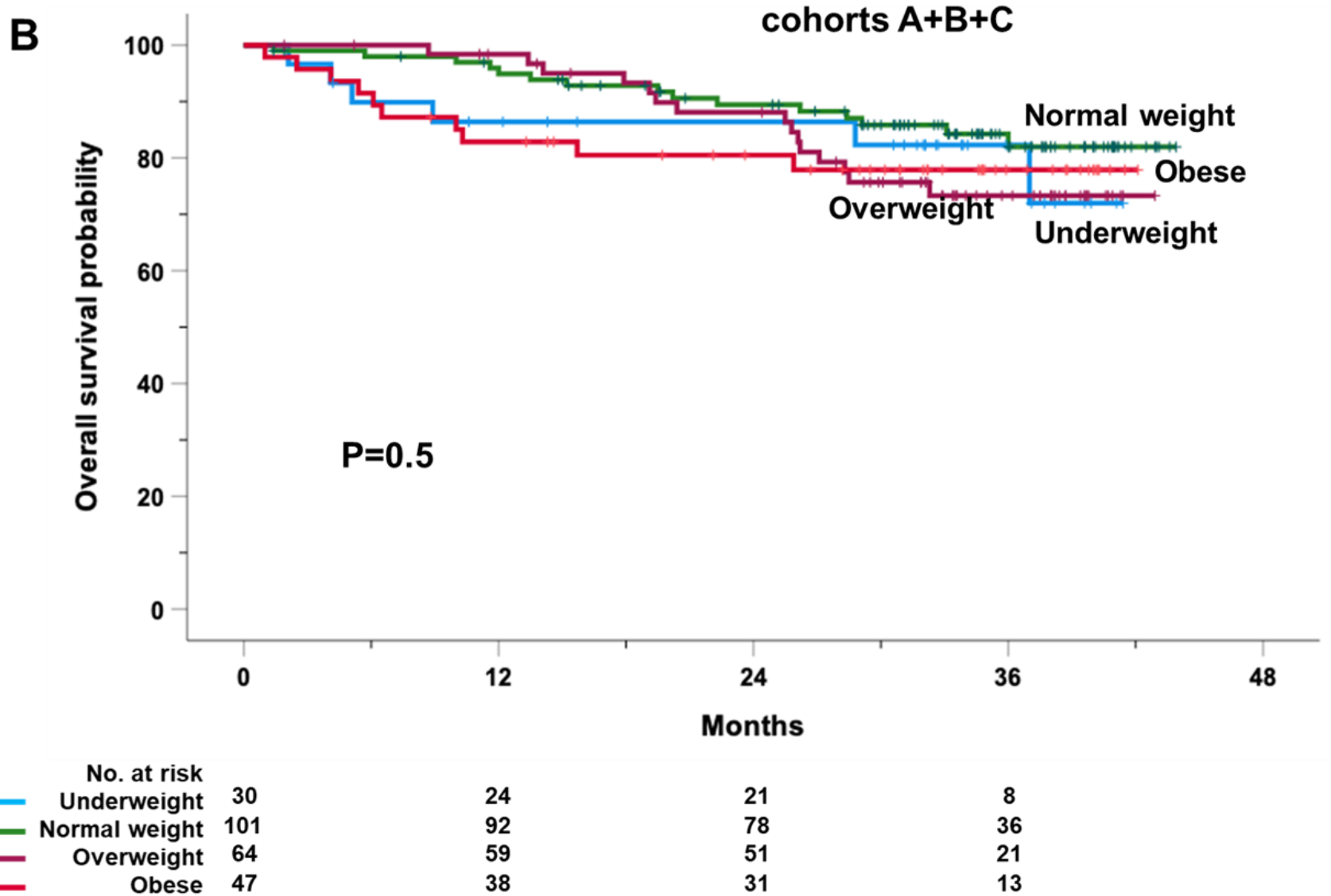
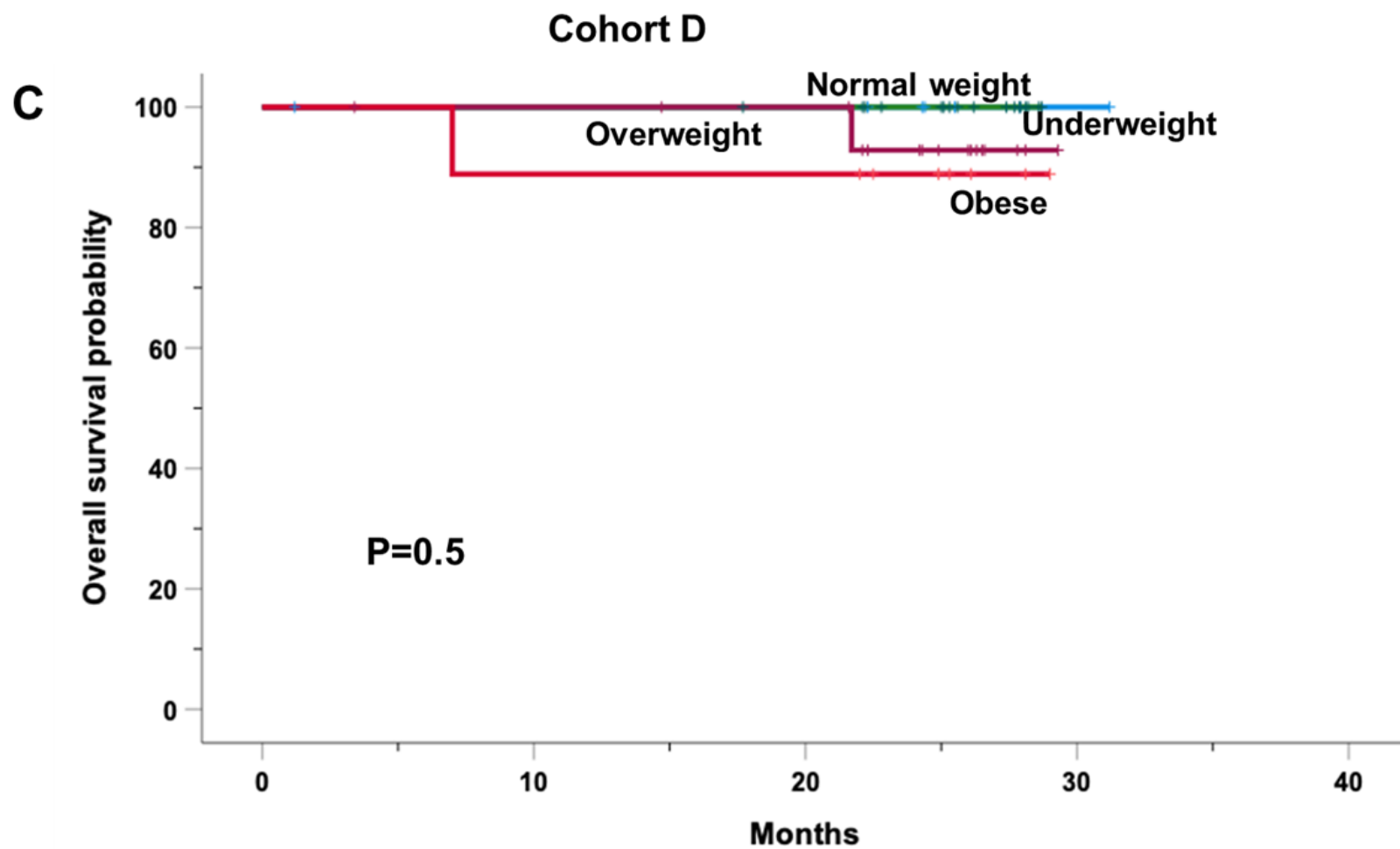


Figure S3C



		No. at risk			
		0	10	20	30
—	Underweight	6	-	2	-
—	Normal weight	16	12	-	-
—	Overweight	15	12	1	-
—	Obese	7	-	-	-

Figure S4

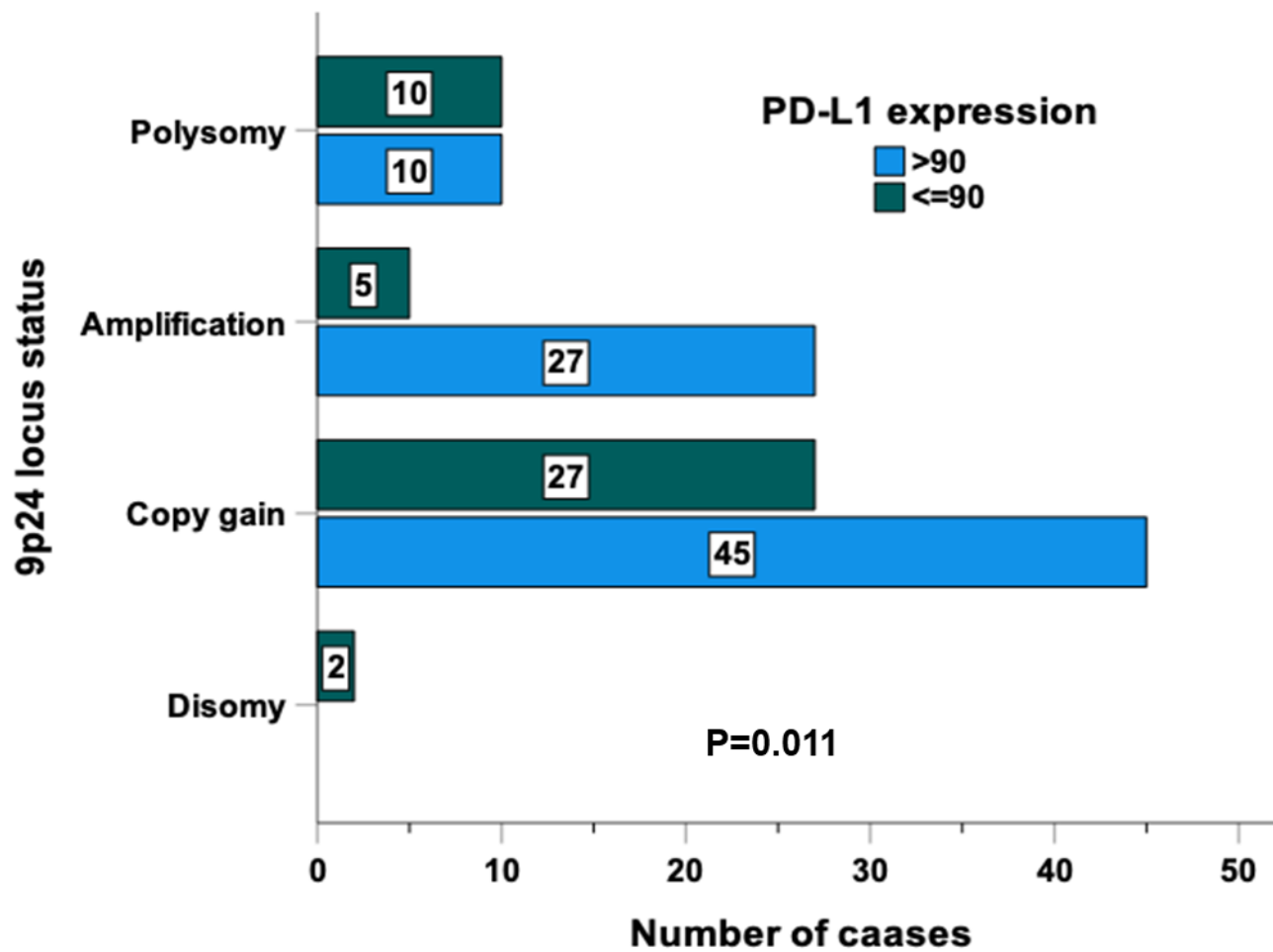


Figure S5

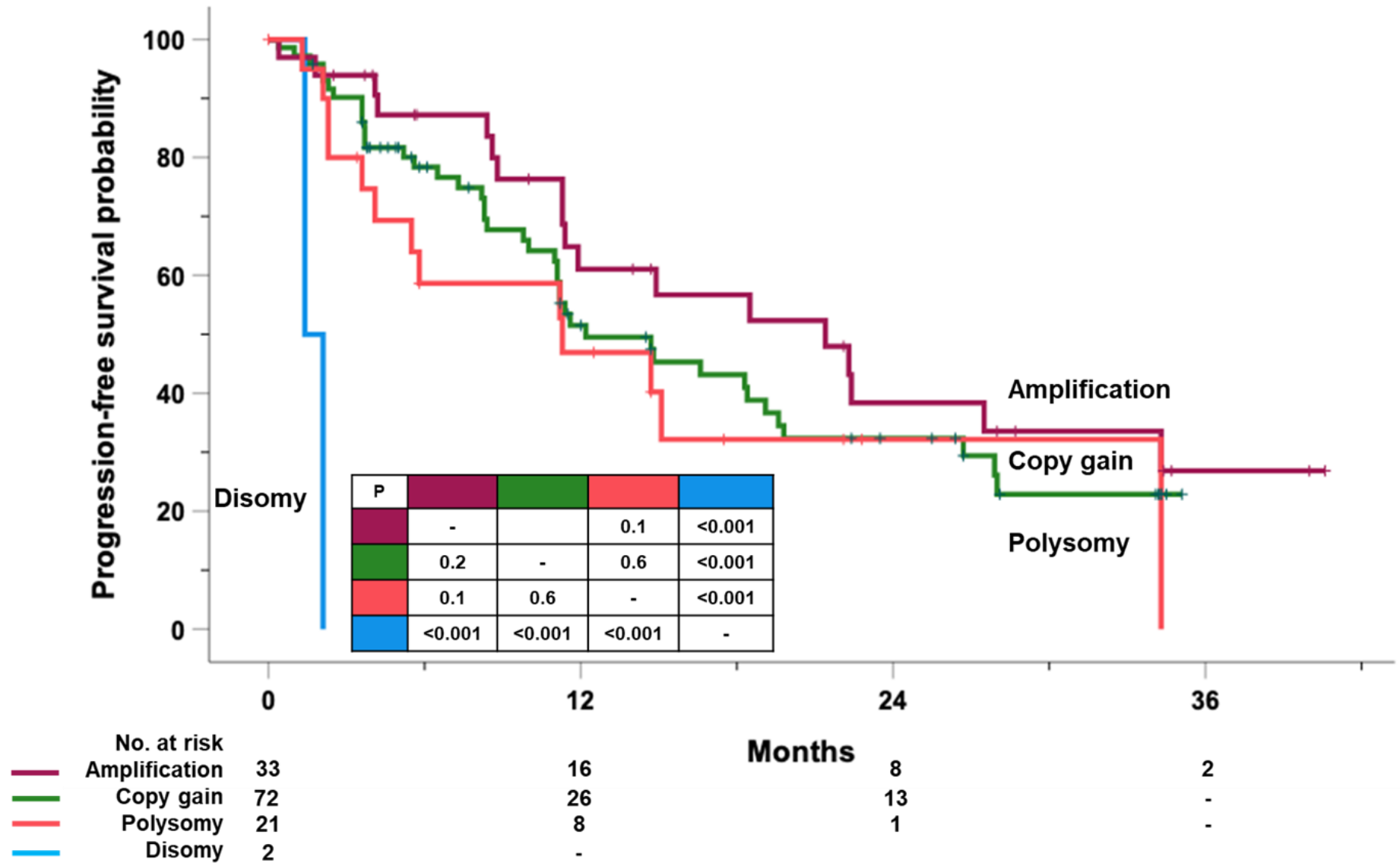


Figure S6

