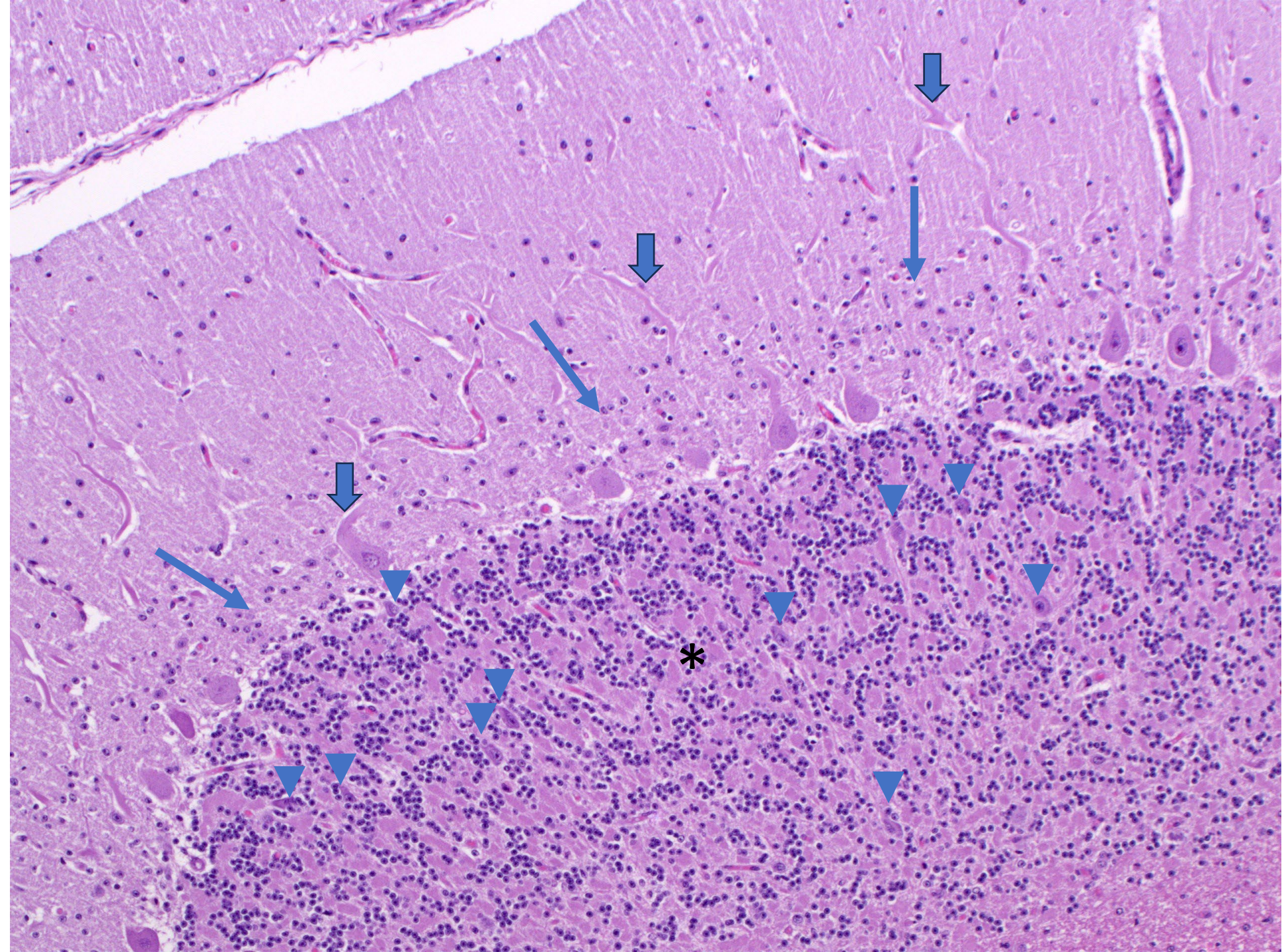
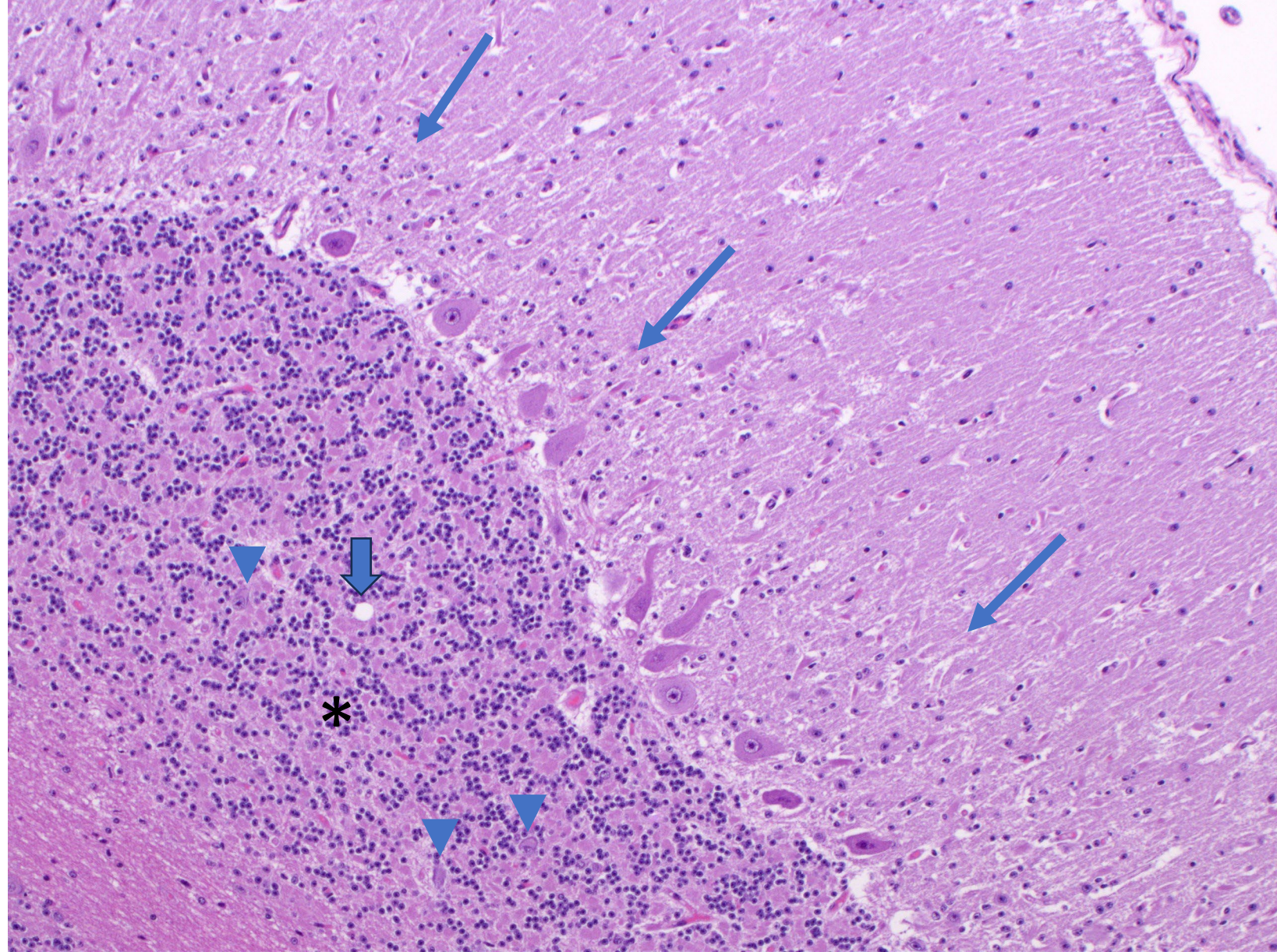


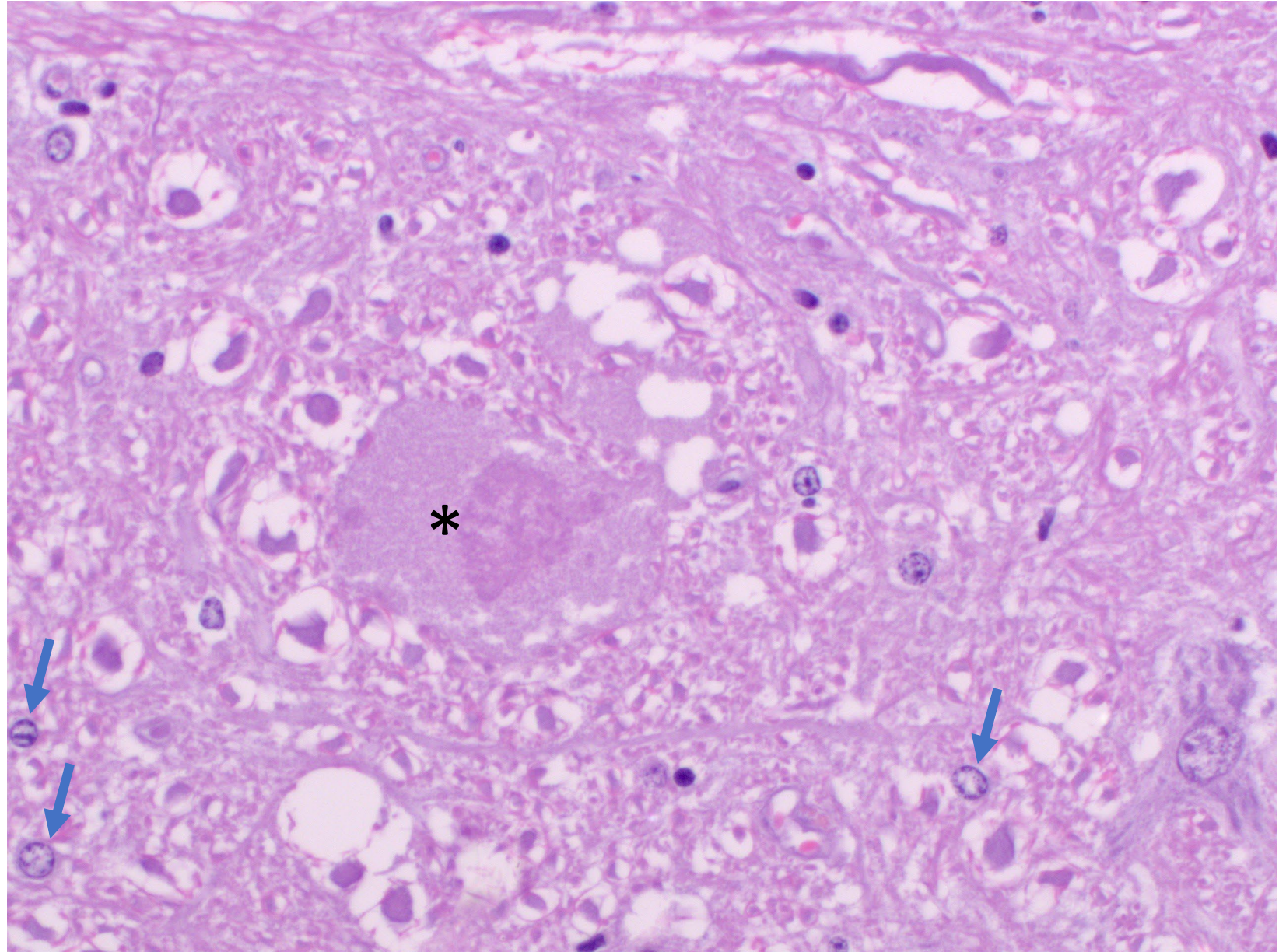
**(A)** Cerebellum, 100x magnification, H&E stain. Prominent Bergmann glia layer with numerous nuclei (long blue arrows). Dendrites of Purkinje cells are prominent (thick arrows). Numerous neurons resembling small-sized Purkinje cells are scattered in the granule cell layer (asterisk).



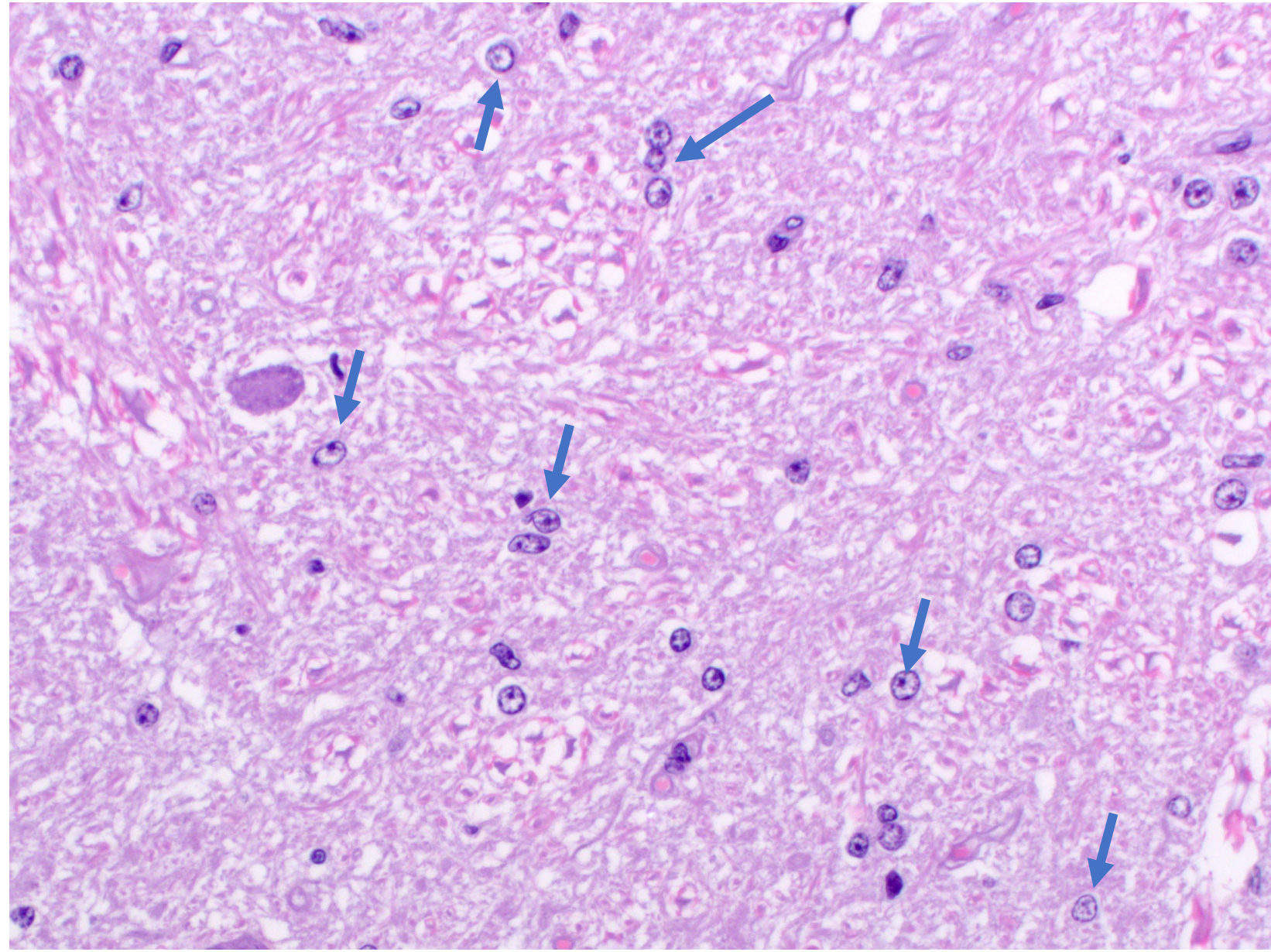
**(B)** Cerebellum, 100x magnification, H&E stain. Prominent Bergmann glia layer with numerous nuclei (long blue arrows). Neurons resembling small-sized Purkinje cells are scattered in the granule cell layer (asterisk). Single well defined vacuole (thick arrow).



**(C)** Brainstem, 400x magnification, H&E stain. Large axonal swelling with eosinophilic granular content (asterisk). Astrocytes have open-faced nuclei.



**(D)** Brainstem, 400x magnification, H&E stain. Numerous astrocytes have open-faced nuclei (arrows) and lay in pairs or chains.



**(E)** Subcortical white matter, 400x magnification, H&E stain. Numerous astrocytes have open-faced nuclei (arrows). One astrocyte exhibits a large irregular folded nucleus.

