



ALMA MATER STUDIORUM
UNIVERSITÀ DI BOLOGNA

ARCHIVIO ISTITUZIONALE
DELLA RICERCA

Alma Mater Studiorum Università di Bologna Archivio istituzionale della ricerca

A brachiopod biotope associated with rocky bottoms at the shelf break in the central Mediterranean Sea:
Geobiological traits and conservation aspects

This is the final peer-reviewed author's accepted manuscript (postprint) of the following publication:

Published Version:

A brachiopod biotope associated with rocky bottoms at the shelf break in the central Mediterranean Sea:
Geobiological traits and conservation aspects / Angeletti L.; Canese S.; Cardone F.; Castellan G.; Foglini F.;
Taviani M.. - In: AQUATIC CONSERVATION-MARINE AND FRESHWATER ECOSYSTEMS. - ISSN 1052-7613. -
STAMPA. - 30:2(2020), pp. 402-411. [10.1002/aqc.3255]

Availability:

This version is available at: <https://hdl.handle.net/11585/744129> since: 2023-10-20

Published:

DOI: <http://doi.org/10.1002/aqc.3255>

Terms of use:

Some rights reserved. The terms and conditions for the reuse of this version of the manuscript are
specified in the publishing policy. For all terms of use and more information see the publisher's website.

This item was downloaded from IRIS Università di Bologna (<https://cris.unibo.it/>).
When citing, please refer to the published version.

(Article begins on next page)

This is the final peer-reviewed accepted manuscript of:

Angeletti, Lorenzo, Simonepietro Canese, Frine Cardone, Giorgio Castellan, Federica Foglini, and Marco Taviani. 'A Brachiopod Biotope Associated with Rocky Bottoms at the Shelf Break in the Central Mediterranean Sea: Geobiological Traits and Conservation Aspects'. *Aquatic Conservation: Marine and Freshwater Ecosystems* 30, no. 2 (2020): 402–11.

The final published version is available online at: <https://doi.org/10.1002/aqc.3255>.

Terms of use:

Some rights reserved. The terms and conditions for the reuse of this version of the manuscript are specified in the publishing policy. For all terms of use and more information see the publisher's website.

This item was downloaded from IRIS Università di Bologna (<https://cris.unibo.it/>)

When citing, please refer to the published version.



A brachiopod biotope associated with rocky bottoms at the shelf-break in the central Mediterranean Sea: geo-biological traits and conservation aspects

Journal:	<i>Aquatic Conservation: Marine and Freshwater Ecosystems</i>
Manuscript ID	AQC-19-0099.R1
Wiley - Manuscript type:	Short Communication
Date Submitted by the Author:	13-Sep-2019
Complete List of Authors:	Angeletti, Lorenzo; Istituto di Scienze Marine Consiglio Nazionale delle Ricerche, ISMAR-CNR Bologna Canese, Simonepietro; Italian National Institute for Environmental Protection and Research, Cardone, Frine; University of Bari, Biology Castellan, Giorgio; Istituto di Scienze Marine Consiglio Nazionale delle Ricerche, ISMAR-CNR Bologna Foglini, Federica; Istituto di Scienze Marine Consiglio Nazionale delle Ricerche, ISMAR-CNR, Bologna, Italia Taviani, Marco; Istituto di Scienze Marine Consiglio Nazionale delle Ricerche, ISMAR-CNR Bologna
Broad habitat type (mandatory) select 1-2:	reef < Broad habitat type, ocean < Broad habitat type, coastal < Broad habitat type
General theme or application (mandatory) select 1-2:	conservation evaluation < General theme or application, biodiversity < General theme or application, habitat mapping < General theme or application
Broad taxonomic group or category (mandatory, if relevant to paper) select 1-2:	benthos < Broad taxonomic group or category, invertebrates < Broad taxonomic group or category
Impact category (mandatory, if relevant to paper) select 1-2:	

SCHOLARONE™
Manuscripts

1
2
3
4
5
6
7
8
9
10
11
12
13
14
15
16
17
18
19
20
21
22
23
24
25
26
27
28
29
30
31
32
33
34
35
36
37
38
39
40
41
42
43
44
45
46
47
48
49
50
51
52
53
54
55
56
57
58
59
60

A brachiopod biotope associated with rocky bottoms at the shelf-break in the central Mediterranean Sea: geo-biological traits and conservation aspects

Lorenzo Angeletti¹, Simonepietro Canese², Frine Cardone³, Giorgio Castellan^{1,4*}, Federica Foglini¹, Marco Taviani^{1,5,6}

1. Institute of Marine Sciences – National Research Council (ISMAR-CNR), Bologna, Italy

2. Institute for the Environmental Protection (ISPRA), Rome, Italy

3. Department of Biology, University of Bari, Bari, Italy

4. Department of Cultural Heritage, University of Bologna, Bologna, Italy

5. Stazione Zoologica Anton Dohrn, Napoli, Italy.

6. Biology Department, Woods Hole Oceanographic Institution, Woods Hole, MA 02543, USA.

Corresponding author: giorgio.castellan@bo.ismar.cnr.it

1 Abstract

- 2 1) In the Recent, brachiopods only seldom occur in benthic communities. A biotope dominated by
3 *Megerlia truncata* was identified in 2013 by Remotely Operated Vehicle (ROV) exploration of
4 the south-easternmost Adriatic margin.
- 5 2) Emerging rocky substrates next to the shelf-break at ca. 120 m appear intensely exploited by this
6 eurybathic rhynchonelliformean brachiopod attaining a population of >300 individuals/m².
- 7 3) Calcareous red algae are almost ubiquitous at this site and preferentially encrust sectors of the
8 substrate where brachiopods are minimal.
- 9 4) This *Megerlia* biotope is a novel finding for this part of the Mediterranean Sea, similar to a
10 situation previously observed in the Western Basin, off the Mediterranean French coast.
- 11 5) It is proposed that this remarkable brachiopod biotope and the adjacent Rhodolith bed are
12 considered important for conservation management.

13
14 **Keywords:** Brachiopoda, *Megerlia truncata*, Mediterranean Sea, ROV, habitat mapping, natural
15 heritage, conservation

17 Introduction

18 Brachiopods have been an important component of the benthic marine realm since the Cambrian
19 (Santagata, 2015; Carlson, 2016). They achieved an astonishing diversity and abundance in the
20 Paleozoic and, Mesozoic, with some 30,000 described species. A net decline took place in the
21 Cenozoic, with ca. 400 species known in the modern ocean (Emig, Bitner, & Álvarez, 2013). At
22 present, rhynchonelliformean brachiopods are prevalently throughout temperate to polar regions (e.g.,
23 Foster, 1974; Campbell & Fleming, 1981; Tunnicliffe & Wilson, 1988; Hiller, 1991; Lee, 1991; Roux
24 & Bremec, 1996; Baird, Lee & Lamare, 2013; Emig, 2017; Gordillo, Muñoz, Bayer & Malvé, 2018),
25 and, more rarely, at tropical latitudes (Laurin, 1997; Kowalewski, Simões, Carroll, & Rodland, 2002;
26 Simões, Kowalewski, Mello, Rodland, & Carroll, 2004). These filter-feeders settle on mobile to hard
27 substrates from subtidal to abyssal depths (Emig et al., 2013). Today, as for the past, their occurrence
28 is controlled by oceanographic factors, above all current strength, nutrient availability and oxygen
29 content (Fürsich, & Hurst, 1974; Tunnicliffe & Wilson, 1988; Kowalewski et al., 2002; Gordillo,
30 Muñoz, Bayer, & Malvé, 2018). Overall, brachiopods play a minor role in modern benthic
31 communities but there are a few examples where they achieve high abundances, like fjords of the

1
2
3 32 Canadian Pacific (Tunncliffe & Wilson, 1988), Chilean Patagonia (Baumgarten, Laudien, Jantzen,
4
5 33 Häussermann, & Försterra, 2014) and New Zealand (Bowen, 1968), or the California shelf-break
6
7 34 (Pennington, Tamburri, & Barry, 1999). *Post-mortem* subtidal brachiopod shell accumulations are
8
9 35 also only seldom recorded (Simões & Kowalewski, 2003; Simões, Rodrigues, de Moraes Leme, &
10 36 Pires-Domingues, 2007).

11
12
13 37 The temperate Mediterranean Sea is home to a relatively diverse brachiopod fauna that includes up
14
15 38 to 13-14 species (Logan, 1979; Logan, Bianchi, Morri, & Zibrowius, 2004, Emig, 2014). Many such
16
17 39 taxa are distributed at shallow depths, often in cryptic habitats (SPA/RAC–UN Environment/MAP,
18
19 40 OCEANA, 2017), and six (*Novocrania anomala*, *Gryphus vitreus*, *Terebratulina retusa*, *Megathiris*
20
21 41 *detruncata*, *Platidia anomioides*, *Megerlia truncata*) live deeper being either eurybathic (circalittoral-
22
23 42 bathyal) or exclusively bathyal. The eurybathic *Gryphus vitreus* (= *Terebratula vitrea*) may form
24
25 43 dense populations on mobile silty to coarser sediment on the outer continental shelf and upper slope
26
27 44 (Pérès & Picard, 1964; Emig, 1989; Madurell et al., 2012; Aguilar et al., 2015; SPA/RAC–UN
28
29 45 Environment/MAP, OCEANA, 2017), or colonize hard substrates (Fourt, Goujard, Perez, &
30
31 46 Chevaldonné, 2017). Large subfossil accumulations of *G.vitreus* of Pleistocene age are sometimes
32
33 47 found (Emig, 2018, 34-35). Many equivalent fossil situations with terebratulid assemblages are
34
35 48 documented in the Neogene to Pleistocene record of the Mediterranean basin (e.g., Gaetani & Saccà,
36
37 49 1983). *Terebratulina retusa* is often recorded from hard substrates at considerable depths (Taviani et
38
39 50 al., 2017) and also frequently occurs in the Mediterranean fossil record. The inarticulate brachiopod
40
41 51 *Novocrania anomala* can be found in considerable numbers attached to dead biogenic frames,
42
43 52 hardgrounds or bedrock, but documentation of this in fossil record is not known (Barrier et al., 1996).

44
45 53 A rather common eurybathic rhynchonelliformean brachiopod in the Mediterranean Sea is *Megerlia*
46
47 54 *truncata* (Linnaeus, 1767). Its geographic range extends to the eastern Atlantic Ocean and occurs at
48
49 55 depths between 5-800 m (Logan, 1979; Brunton, 1988; Anadón, 1994; Logan, Bianchi, Morri,
50
51 56 Zibrowius, & Bitar, 2002; Logan et al., 2004; Çinar, 2014; Emig, 2014, 2018; Gerovasileiou & Bailly,
52
53 57 2016; Álvarez, Emig, & Tréguier, 2017). In the Recent, *M. truncata* is generally associated with
54
55 58 coarse detritic substrates, hardgrounds and bedrock, and with cold-water coral frames from the
56
57 59 circalittoral to the bathyal zones (Madurell et al., 2012; Fourtet et al., 2017; Emig, 2014, 2018), their
58
59 60 dead shells being abundant in submarine deposits (Remia & Taviani, 2005; Taddei Ruggiero, Buono
60
61 61 & Raia, 2006). Although it may be common locally, it is not known to play a dominant role in benthic
62
63 62 communities, with the exception of the assemblage found at ca. 105 m at Banc d'Esquine, off the
64
65 63 Mediterranean French coast (Fourt et al., 2017). Finally, there are situations where some of the taxa
66
67 60

1
2
3 64 mentioned above (*G. vitreus*, *T. retusa*, *M. truncata*, *M. detruncata* and *N. anomala*) share the same
4
5 65 hard substrates at depth (Fourt et al., 2017).
6

7 66 Here we report the first discovery of a distinct brachiopod biotope dominated by *Megerlia truncata*
8
9 67 (Linnaeus, 1767) in the central Mediterranean Sea, offshore the Albanian-Greek shelf at the boundary
10
11 68 between the Adriatic and Ionian seas. To the best of our knowledge, a comparable biotope has been
12
13 69 previously identified only in the Western Mediterranean at similar depth and type of substrate (Fourt
14
15 70 et al., 2017). This new finding is discussed in terms of biological characteristics, oceanographic and
16
17 71 geo-sedimentary conditions, actuo-paleontological potential and conservation issues.
18
19 72

21 22 73 **Material and Methods**

23
24 74 The study-area is located in the Bay of Saranda at ca. 20 km from the Albanian coast at ca. 130 m
25
26 75 depth (Figure 1). The site was surveyed during the COCOMAP13 oceanographic cruise R/V Urania
27
28 76 (May 2013). Bathymetric data, Remotely Operated Vehicle (ROV) images, bottom samples, and
29
30 77 hydrological casts were collected. Swath bathymetry was acquired using a hull-mounted Kongsberg
31
32 78 Simrad EM302, with a nominal frequency of 30 kHz, swath coverage of ca. 4x greater than water
33
34 79 depth and 512 beams per second acquired with Reson PDS2000 software. All data were plotted in
35
36 80 the Transverse Mercator – UTM34N-WGS84 Coordinate System. A morphobathymetric map (Figure
37
38 81 1b), with a cell size of 1x1 m, was obtained using CARIS SIS and HIPS software. Physical properties
39
40 82 of the seawater were sourced from the World Ocean Atlas 2013 version 2 (WOA13v2) dataset
41
42 83 (Locarnini et al., 2013), which provided long-term averaged (1955-2013) temperature and salinity
43
44 84 values of 14.43 °C and 38.60, respectively.

45
46 85 The ROV dive (COC13-28) was performed using a Pollux III (Global Electric Italiana) equipped with
47
48 86 a low resolution CCD video camera for navigation and a high resolution video camera (SonyHDR-
49
50 87 HC7) with an image frame of 2304x1296 dpi; three laser beams positioned 20 cm from each other
51
52 88 provided the scale bar on the videos (metadata are reported in Table 1). The ROV was equipped with
53
54 89 an underwater acoustic tracking system which provides position and depth every 1s. Taxonomic
55
56 90 identifications were made using high resolution still image analysis, while low resolution images
57
58 91 were analysed for habitat mapping along the ROV track (Figure 1c-d). Low-resolution still frames
59
60 92 were automatically extracted every 10s, all images were georeferenced using Adelle and ESRI
61
62 93 ArcGIS software. Macro- (>0.5 mm) and mega-benthic organisms (>2 cm) were identified to the
63
64 94 lowest taxonomic rank (Table 2); taxa that could not be identified from images to species-level, such

1
2
3 95 as sponges, were identified only as morphospecies or morphological categories (e.g., Bell & Barnes,
4 96 2001; Santin et al., 2019). Taxonomic names conform to the World Register of Marine Species
5 96 database (WoRMS Editorial Board, 2019). A large volume (60 l) modified Van Veen grab was used
6 97
7 97 to collect sediments from this site (sample COC13-29) which are stored at the ISMAR-CNR
8 98
9 98 Repository in Bologna.
10 99

11
12
13 100 A 3D model (Figure 3b) was reconstructed using Agisoft Photoscan Professional Edition V. 1.2.5. A
14 101 set of georeferenced high-definition images from ROV videos was selected to reconstruct both the
15 101 brachiopod- and sponge-dominated rocky outcrops. Firstly, pictures were aligned at high accuracy to
16 102
17 102 create a dense-point cloud. Meshes were then constructed with a high polygon count and a texture
18 103
19 103 layer of the outcrops was created using a mosaic blending mode and superimposed on the meshes.
20 104
21

22 105

23 24 25 106 **Results**

26
27 107 The outer shelf of the Albanian-Greek continental margin, where the site is located, is characterized
28 108
29 108 by a complex geomorphologic setting that includes rocky highs, blocks and concretions surrounded
30 109
31 109 by vast stretches of coarse biogenic-detrital sediment enriched in rhodoliths (Figure 1). It extends
32 110
33 110 over an area of ca. 10 km² and is characterized by a structural high reaching a maximum elevation of
34 111
35 111 ca. 100 m (from 201 to 107 m) and oriented northwest-southeast. The top of this tectonically-driven
36 112
37 112 structure is dominated by small-scale (only few metres) geomorphic reliefs and backscatter (i.e.,
38 113
39 113 reflectivity) image analysis shows high reflectivity that indicates the presence of a hard (rocky and/or
40 114
41 114 pebbly) substrate (Figure 1).
42 115
43

44 116 The survey covered a total length of 1322 m between 108-130 m, and explored the area with the
45 117
46 117 maximum reflectivity value (Figure 1, Table 1). Two main biotopes were identified and mapped along
47 118
48 118 the ROV track: (1) a Brachiopod-dominated biotope (Bb) settled on hard substrates for a total length
49 119
50 119 of 417 m covering an area of 1251 m²; (2) a Rhodolith bed (Rb) distributed over a generally flat
51 120
52 120 surface (Figure 1c). The Brachiopod biotope is characterized by two main facies, one dominated by
53 121
54 121 brachiopods, and another where brachiopods and encrusting/erect sponges co-occur (for a length of
55 122
56 122 279 m). A third facies was observed on top of the blocks, characterized by small patches of
57 123
58 123 *Filigrana/Salmacina* complex with *Axinella vacoleti* and *A. verrucosa* (linear extension of 14 m).
59 124
60

1
2
3 125 Brachiopods colonized mostly steep hard substrates (along the ROV track, for a length of 138 m).
4
5 126 *Megerlia truncata* was the species that typified this biotope (Figures 2a, c-e; 3a-c), which attained a
6
7 127 mean density of 176 ± 128 individuals/m² and maximum density of >300 individuals/m² (Figure 3b).
8
9 128 Brachiopods were preferentially distributed on rocks facing towards to the coast, from West to
10 129 Southwest, while Rb faced both sides (Figure 1d). The Bb is bathed by the Eastern Adriatic Current
11
12 130 (EAC) that flows northward (e.g., Cushman-Roisin, Gačić, Poulain & Artegiani, 2013; de Ruggiero
13
14 131 et al., 2018), however, as shown by the Adriatic Forecasting System model
15 132 (<http://oceanlab.cmcc.it/afs/>), the main water mass at 100 m depth in the Bay of Saranda flows
16
17 133 southward. In general, *M. truncata* dominates over sessile and encrusting macrofauna (e.g., sponges),
18
19 134 however, encrusting red algae seldom develop on living *Megerlia truncata* shells (ca. 10% of the
20
21 135 imaged brachiopods) and represents the main epibiosis affecting brachiopod shells (Figures 3c; S1b).
22 136 There was no evidence of other macroinvertebrates (e.g., bryozoans) was recorded on the surface of
23
24 137 the living brachiopods. *Rhabderemia* sp. and *Hexadella pruvoti* are the most common sponges
25
26 138 recorded together with crustose coralline algae (CCA) on hard substrates (Figure 2c-e). Cnidarians,
27
28 139 such as the sea anemones cf. *Hormathia coronata* and the solitary coral *Caryophyllia calveri* are
29 140 relatively common, and among annelids *Protula* sp. and *Serpula vermicularis* are the dominant
30
31 141 species (Figure S1b-d). The red lance urchin *Stylocidaris affinis* and the hatpin urchin
32
33 142 *Centrostephanus longispinus* are vagile organisms that commonly occur also with abundant juvenile
34
35 143 specimens (<3 cm in diameter) of *C. longispinus* in the explored area (Figures 2a; S1b). Demersal
36 144 fish fauna is represented mainly by *Phycis phycis* and by the rare parrot seaperch *Callanthias ruber*
37
38 145 that shelter under substrate cavities and ledges (Figure S2a, d; Table 2). All identified *M. truncata*
39 146 specimens were alive, often feeding (Figure S1b-d); no dead shells were found excepted for those
40
41 147 recorded loose on the sedimentary cover at the base of hard substrates (Figures 3c-g; S1a).

42
43
44 148 The Rhodolith bed extends for 668 metres, with a live coralline-algae coverage estimated at ca. 3 km²
45 149 using backscatter mapping (Figure 1c). No detailed analysis of the living algal component is possible
46
47 150 based only on the ROV images, and floras have been generally indicated as CCA. The surveyed area
48
49 151 represents one of the deepest living Mediterranean rhodolith beds (Aguilar, Pastor, de la Torriente &
50
51 152 García, 2009; Basso, Babbini, Ramos-Esplá & Salomidi, 2017), and the 2005-2009 averaged value
52 153 of Photosynthetically Active Radiation (PAR) on the seafloor, extracted from EUSeaMap 2016
53
54 154 dataset (European Marine Observation Data Network (EMODnet) Seabed Habitats project,
55
56 155 <http://www.emodnet-seabedhabitats.eu/>) indicate a value of 0.0014 that corresponds to the lowest
57
58 156 possible occurrence of red CCA (Runcie, Gurgel & Mcdermid, 2008 with references therein). In
59 157 general, rhodoliths take the form of small boxworks (<2 cm) which define the bed thickness (Bracchi
60
158 et al., 2019). Biodiversity of the Rb is characterized by few dominant taxa (Table 2), mostly erect

1
2
3 159 sponges, such as the fan-shaped cf. *Poecillastra compressa* and the erect *Aplysina cavernicola* (Figure
4 160 2e). Vagile fauna is dominated by *Stylocidaris affinis*, while demersal fishes of some commercial
5 161 value are *Pagellus erythrinus* and *Pagrus pagrus*. The lobster *Palinurus elephas* represents an
6 162 invertebrate recorded in the IUCN Red List as Vulnerable (IUCN, 2019).

7
8
9
10
11 163 Finally, in the northernmost surveyed area (Figures 1b), the encrusting sponge *Dendroxea cf. lenis*
12 164 covers a wide portion of the substrate that prevents the settlement of other organisms, including
13 165 brachiopods.

14
15
16
17 166

18 19 20 167 **Discussion**

21
22 168 *General traits.* Dense aggregations of pedunculate brachiopods on hard substrates, such as vertical
23 169 walls or large boulders, have been rarely reported in the literature. Examples are from the Bay of
24 170 Fundy in the Canadian Atlantic where *Terebratulina septentrionalis* reaches an average density of
25 171 471 individuals/m² (Logan & Noble, 1971), the Chilean fjordland where *Magellania venosa* may
26 172 attain a density of 200 individuals/m² (Baumgarten et al., 2014) and in Canadian fjords of British
27 173 Columbia where brachiopods (such as the Rhynchonelliformea *Laqueus californianus* and
28 174 *Terebratulina unguicula*) reach a maximum of 945 individuals/m², with an average density of 190
29 175 individuals/m² (Tunncliffe & Wilson, 1988).

30
31
32
33
34
35
36
37 176 The only other occurrence of *M. truncata* aggregations on rocky substrates at similar depths is that
38 177 on the French coast mentioned above (Fourt et al., 2017). No data are reported for the French site but
39 178 the density is comparable to the central Mediterranean site. The high abundance of this almost mono-
40 179 specific aggregation of *M. truncata* on the shelf-break seems to be a function of the following
41 180 conditions. Firstly, the peculiar geomorphology of a shelf typified by mobile sediments (and inhabited
42 181 by a related infauna and mobile epifauna), but complicated by the local occurrence of rocky blocks
43 182 that offer a substrate for sessile fauna. Secondly, the relatively high colonization potential of a
44 183 pedunculate brachiopod that displays a eurytopic distribution in terms of depth (5-600 m) and
45 184 substrate (coarse-particulate to hard); a key factor promoting this may be the recruitment of *Mergerlia*
46 185 larvae from different suitable habitats nearby. Thirdly, favourable oceanographic conditions that can
47 186 sustain a dense population of filter feeders, with bottom currents capable of transporting food particles
48 187 and winnowing the substrate; this oceanographic condition is guaranteed by the NE-flowing current
49 188 that flushes the shelf-break here, and is bound by the Adriatic Surface Water and the deeper Levantine
50 189 Intermediate Water deeper (Cushman-Roisin et al., 2013; de Ruggiero et al., 2018 with reference
51 190 therein).

191

192 Conservation aspects

193 Brachiopod-dominated assemblages are commonplace in the geological record, and to a lesser degree
194 in the Recent. Regarding the Mediterranean Basin, one fossil site of Pliocene age is characterized by
195 a distinct terebratulid paleocommunity, which has been anecdotally proposed for protection (Pavia &
196 Zunino, 2008). Modern brachiopod communities of the Mediterranean Sea are not identified for
197 conservation, which is guaranteed if they occur in ecologically-valuable areas. This is the case of
198 Banc de l'Esquine off the French Riviera, which is located within the Calanques National Park. The
199 uniqueness of the Brachiopod biotope dominated by *M. truncata* located at the Albanian-Greek shelf-
200 break calls for taking formal conservation action, also given that it co-occur with a deep-water
201 rhodolith bed (e.g., Salomidi et al., 2012; Basso, Babbini, Kaleb, Bracchi, & Falace, 2016, Bracchi et
202 al., 2019). The ecological value is further strengthened by the presence here of invertebrates (Table
203 2 and Figure 2a) listed in the 'Protocol concerning Specially Protected Areas and Biological Diversity
204 in the Mediterranean' of the Barcelona Convention, such as the erect sponge *Aplysina cavernicola*,
205 the lobster *Palinurus elephas*, and the hatpin urchin *Centrostephanus longispinus* (Annex IV of
206 Habitat Directive, Appendix II of Bern Convention and Annex II of the protocol of the Barcelona
207 Convention). ROV images document the existence of juvenile specimens of *C. longispinus*, what
208 makes the site highly interesting in terms of larval recruitment and, possibly, nursery grounds. Besides
209 the presence of these important taxa, the complex morphology of the site produces cryptic
210 microtopographic situations, ideal for various other sessile and mobile invertebrates, but also for
211 demersal fish (Table 2). At the time of our ROV survey (springtime 2013), there was no evidence of
212 noticeable impacts (e.g., excessive litter or trawl and longline fishing). Anthropogenic-driven
213 stressors, such as global warming and ocean acidification could potentially compromise the Good
214 Environmental Status of this biotope in the future. Especially important might be global warming,
215 which could modify the water mass sustaining the brachiopod community by affecting nutrient
216 content, current strength and flows path. The effects of ocean acidification on brachiopod calcite are
217 less likely to hinder the shell calcification process (Ye et al., 2018; Cross, Peck & Harper, 2018).
218 Thus, we do not foresee major concerns over the short-midterm for the continued survival of the Bb.
219 As a precautionary approach, however, we suggest that protective measures are needed to prevent
220 future disturbances to the biotope (dumping, infrastructure, fishery), such as the implementation of
221 marine protected area. Alternatively, this site should be considered as a Site of Community
222 Importance (SCI), in agreement with the EU Directive 92/43/CEE. The justification is to consider
223 this Bb as a subtype of 'reef' in the Habitat Directive. We propose a region that encompasses the most

1
2
3
4
5
6
7
8
9
10
11
12
13
14
15
16
17
18
19
20
21
22
23
24
25
26
27
28
29
30
31
32
33
34
35
36
37
38
39
40
41
42
43
44
45
46
47
48
49
50
51
52
53
54
55
56
57
58
59
60

224 valuable ecological components of this sector of the shelf, centered on the Bb and surrounding
225 Rhodolith bed, with a reasonably-wide buffer area (Figure 4), of 10 km² and 17 km², respectively.

226

227 **Conclusions**

- 228 1. A biotope dominated by the pedunculate brachiopod *Megerlia truncata* has been identified in
229 the Albanian-Greek offshore, Mediterranean Sea; a comparable biotope was previously only
230 known for the Western Mediterranean, off the French coast.
- 231 2. This biotope is located at the shelf-break at ca 120 m, where hard substrates emerge from the
232 mobile sediment represented by a rhodolith bed.
- 233 3. The combined Brachiopod biotope and Rhodolith bed host taxa of recognized conservation
234 value. The site is home to a variety of sessile and mobile invertebrates and demersal fish.
- 235 4. Conservation-wise, we suggest that this rare biotope and adjacent rhodolith bed deserve
236 protection status and the best area to implement a MPA is proposed.

239 **Acknowledgements**

240 Captain, crew and scientific staff of RV Urania cruise COCOMAP13 are acknowledged for their
241 efficient and skilful cooperation at sea. Christian Emig and Julie Trotter kindly provided valuable
242 comments on the manuscript. English text edited by Julie Trotter. This paper is ISMAR-Bologna
243 scientific contribution n. 1997 and is part of EU F.P. VII Projects CoCoNet (contract no. 287844),
244 EVER-EST (grant agreement no. 674907), DG Environment programme IDEM (grant agreement No
245 11.0661 /2017/750680/SUB/EN V.C2) and the Flag Project Ritmare (Ricerca Italiana per il Mare)
246 projects.

1
2
3 248 **References**
4

- 5
6 249 1. Aguilar, R., Pastor, X., de la Torriente, A., & García, S. (2009). Deep-sea coralligenous beds observed
7 250 with ROV on four seamounts in the western Mediterranean. In: Pergent-Martini, C., Bricchet, M. (Eds.),
8 251 UNEP-MAP-RAC/SPA: Proceedings of the 1st Mediterranean Symposium on the Conservation of the
9 252 Coralligenous and Others Calcareous Bio-Concretions; 15-16 January 2009; Tabarka, Tunisia. Tunis:
10 253 UNEP-MAP-RAC/SPA. pp. 147-149.
11
12 254 2. Aguilar, R., Serrano, A., García, S., Alvarez, H., Blanco, J., López, J., ... Pastor, X. (2015). Vulnerable
13 255 habitats and species in the deep-sea Emile Baudot Escarpment (South Balearic Islands) surveyed by
14 256 ROV. In: Langar, H., Bouafif, C., Ouerghi, A. (Eds.) Proceedings of the 1st Mediterranean symposium
15 257 on the conservation of dark habitats; 31 October 2014; Portonoz, Slovenia. Tunis: UNEP-
16 258 MAP-RAC/SPA. pp. 15–20.
17
18 259 3. Álvarez, F., Emig, C.C., & Tréguier, J. (2017). Brachiopodes actuels: historique et révision de la
19 260 collection D.-P. Ehlert (Laval) ; brachiopodes des côtes françaises métropolitaines [Recent brachiopods:
20 261 History and review of the collection of D.-P. Ehlert (Laval); brachiopods of the continental French
21 262 coasts]. Carnets de Géologie, CG 2017_B02, pp. 1-386.
22
23 263 4. Anadón, N. (1994). Braquiópodos actuales de la plataforma y talud continental de la costa central de
24 264 Asturias (Norte de España). Boletín de la Real Sociedad Española de Historia Natural. Sección biológica
25 265 91: 65–77.
26
27 266 5. Baird, M.J., Lee, D.E., & Lamare, M.D. (2013). Reproduction and growth of the terebratulid brachiopod
28 267 *Liothyrella neozelanica* Thomson, 1918 from Doubtful Sound, New Zealand. The Biological Bulletin
29 268 225: 125–136.
30
31 269 6. Barrier, P., Di Geronimo, I., La Perna, R., Rosso, A., Sanfilippo, R., & Zibrowius, H. (1996). Taphonomy
32 270 of deep-sea hard and soft bottom communities: the Pleistocene of Lazzàro (Southern Italy). In: Meléndez,
33 271 G., Blasco, F., Pérez, F. (Eds.) Tafonomia y fossilización. II Reunion, June 1996; Zaragoza, Spain. pp.
34 272 39–46.
35
36 273 7. Basso, D., Babbini, L., Kaleb, S., Bracchi, V.A., & Falace, A. (2016). Monitoring deep Mediterranean
37 274 rhodolith beds. Aquatic Conservation: Marine and Freshwater Ecosystems 26: 549–561.
38
39 275 8. Basso, D., Babbini, L., Ramos-Esplá, A.A., & Salomidi, M. (2017). Mediterranean rhodolith beds. In:
40 276 Riosmena-Rodríguez, R., Nelson, W., Aguirre, J. (Eds.), Rhodolith/maërl beds: a global perspective.
41 277 Coastal Research Library 15, Springer, 281-298.
42
43 278 9. Baumgarten, S., Laudien, J., Jantzen, C., Häussermann, V., & Försterra, G. (2014). Population structure,
44 279 growth and production of a recent brachiopod from the Chilean fjord region. Marine Ecology 35: 401–
45 280 413.
46
47 281 10. Bell, J.J., & Barnes, D.K. (2001). Sponge morphological diversity: a qualitative predictor of species
48 282 diversity? Aquatic Conservation: Marine and Freshwater Ecosystems 11: 109–121.
49
50 283 11. Bowen ZP. (1968). A guide to New Zealand Recent brachiopods. Tuatara 16: 127–150.
51
52
53
54
55
56
57
58
59
60

- 1
2
3 284 12. Bracchi, V.A., Angeletti, L., Marchese, F., Taviani, M., Cardone, F., Haidas, I., ... Basso, D. (2019). A
4 285 resilient deep-water rhodolith bed off the Egadi Archipelago (Mediterranean Sea) and its
5 286 actuopaleontological significance. *Alpine and Mediterranean Quaternary* 32: 1-20.
6 287
7 288 13. Brunton, C.H.C. (1988). Some brachiopods from the eastern Mediterranean Sea. *Israel Journal of Ecology
8 289 and Evolution* 35: 151–169.
9 290
10 291 14. Campbell, H.J., & Fleming, C.A. (1981). Brachiopoda from Fjordland, New Zealand, collected during
11 292 the New Golden Hind Expedition, 1946. *New Zealand Journal of Zoology* 8: 145–155.
12 293
13 294 15. Carlson, S.J. (2016). The evolution of Brachiopoda. *Annual Review of Earth and Planetary Sciences* 44:
14 295 409–438.
15 296
16 297 16. Çinar, M.E. (2014). Checklist of the phyla Platyhelminthes, Xenacoelomorpha, Nematoda,
17 298 Acanthocephala, Myxozoa, Tardigrada, Cephalorhyncha, Nemertea, Echiura, Brachiopoda, Phoronida,
18 299 Chaetognatha, and Chordata (Tunicata, Cephalochordata, and Hemichordata) from the coasts of Turkey.
19 300 *Turkish Journal of Zoology* 38: 698–722.
20 301
21 302 17. Cross, E.L., Peck, L.S., & Harper, E.M. (2018). A 120-year record of resilience to environmental change
22 303 in brachiopods. *Global Change Biology* 24: 2262–2271.
23 304
24 305 18. Cushman-Roisin, B., Gačić, M., Poulain, P.-M., & Artegiani, A. (2013). Physical oceanography of the
25 306 Adriatic Sea: past, present and future. Springer Science & Business Media, pp. 1-320.
26 307
27 308 19. Emig, C.C. (1989). Distributional patterns along the Mediterranean continental margin (Upper Bathyal)
28 309 using *Gryphus vitreus* (Brachiopoda) densities. *Palaeogeography, Palaeoclimatology, Palaeoecology* 71:
29 310 253–256.
30 311
31 312 20. Emig, C.C. (2014). *Novocrania turbinata* synonyme de *N. anomala*. *Carnets de Géologie [Notebooks on
32 313 Geology]* 14: 159-171.
33 314
34 315 21. Emig, C.C. (2017). Atlas of Antarctic and sub-Antarctic Brachiopoda. *Carnets de Géologie, Madrid,
35 316 CG2017_B03*, pp. 1-93.
36 317
37 318 22. Emig, C.C. (2018). Brachiopodes récoltés lors de campagnes (1976-2014) dans l'étage Bathyal des côtes
38 319 françaises méditerranéennes. Redéfinition des limites du système phytal dans le domaine marin
39 320 benthique. *Carnets de Géologie, Madrid, CG2018_B01*, pp. 1-100.
40 321
41 322 23. Emig, C.C., Bitner, M.A., & Alvarez, F. (2013). Phylum Brachiopoda. *Zootaxa* 3703: 75–78.
42 323
43 324 24. Foster, M.W. (1974). Recent Antarctic and subantarctic brachiopods. *Antarctic Research Series* 21
44 325 American Geophysical Union, pp. 1-189.
45 326
46 327 25. Fourt, M., Goujard, A., Perez, T., & Chevaldonné, P. (2017). Guide de la faune profonde de la mer
47 328 Méditerranée. Exploration des roches et canyons sous-marins des côtes françaises. *Muséum National
48 329 d'Histoire Naturelle (Patrimoines naturels; 75)*, Paris, pp. 1-184.
49 330
50 331 26. Fürsich, F.T., & Hurst, J.M. (1974). Environmental factors determining the distribution of brachiopods.
51 332 *Palaeontology* 17: 879–900.
52 333
53 334 27. Gaetani, M., & Saccà, D. (1983). Brachiopodi neogenici e pleistocenici della provincia di Messina e della
54 335 Calabria meridionale. *Geologica Romana* 22: 1–43.
55 336
56 337
57 338
58 339
59 340
60 341

- 1
2
3 321 28. Gerovasileiou, V., & Bailly, N. (2016). Brachiopoda of Greece: an annotated checklist. *Biodiversity Data*
4 322 *Journal* 4: e8169. <https://doi.org/10.3897/BDJ.4.e8169>.
- 6 323 29. Gordillo, S., Muñoz, D.F., Bayer, M.S., & Malvé, M.E. (2018). How physical and biotic factors affect
7 324 brachiopods from the Patagonian Continental Shelf. *Journal of Marine Systems* 187: 223–234.
- 9 325 30. Hiller, N. (1991). The southern African Recent brachiopod fauna. In: MacKinnon, D.I., Lee, D.E., &
10 326 Campbell, J.D. (Eds.), *Brachiopods through Time. Proceedings of the Second International Brachiopod*
11 327 *Congress. University of Otago, Dunedin, New Zealand, 5-9 February, 1990. Balkema, Rotterdam. pp.*
12 328 *439–445.*
- 15 329 31. IUCN (2019). *The IUCN Red List of Threatened Species. Version 2019-1.*
- 17 330 32. Kowalewski, M., Simões, M.G., Carroll, M., & Rodland, D.L. (2002). Abundant brachiopods on a
18 331 tropical, upwelling-influenced shelf (Southeast Brazilian Bight, South Atlantic). *Palaios* 17: 277–286.
- 20 332 33. Laurin, B. (1997). Brachiopodes récoltés dans les eaux de la Nouvelle-Calédonie et des îles Loyauté,
21 333 Matthew et Chesterfield. Résultats des campagnes MUSORSTOM, Mémoires du Muséum national
22 334 d'Histoire naturelle. Série A, *Zoologie* 18: 411-471.
- 25 335 34. Lee, D.E. (1991). Aspects of the ecology and distribution of the living Brachiopoda of New Zealand. In:
26 336 MacKinnon, D.I., Lee, D.E., & Campbell, J.D. (Eds.), *Brachiopods through Time. Proceedings of the*
27 337 *Second International Brachiopod Congress. University of Otago, Dunedin, New Zealand, 5-9 February,*
28 338 *1990. Balkema, Rotterdam, pp. 273-280..*
- 31 339 35. Locarnini, R.A., Mishonov, A.V., Antonov, J.I., Boyer, T.P., Garcia, H.E., Baranova, ... Johnson, D.R.
32 340 (2013). *World Ocean Atlas 2013, Volume 1: Temperature. In: Levitus, S. (Ed.), Mishonov, A.*
33 341 *(Technical Ed.), NOAA Atlas NESDIS 73, pp. 1-40.*
- 36 342 36. Logan, A. (1979). The Recent Brachiopoda of the Mediterranean Sea. *Bulletin de l'Institut*
37 343 *océanographique, Monaco* 72: 1–112.
- 39 344 37. Logan, A., & Noble, J.P.A. (1971). A Recent shallow-water brachiopod community from the Bay of
40 345 Fundy. *Maritime Sediments* 7: 85-91.
- 42 346 38. Logan, A., Bianchi, C.N., Morri, C., Zibrowius, H., & Bitar, G. (2002). New records of Recent
43 347 brachiopods from the eastern Mediterranean Sea. *Annali del Museo civico di Storia naturale G. Doria,*
44 348 *Genova* 94: 407–418.
- 47 349 39. Logan, A., Bianchi, C.N., Morri, C., & Zibrowius, H. (2004). The present-day Mediterranean brachiopod
48 350 fauna: diversity, life habits, biogeography and paleobiogeography. *Scientia Marina* 68: 163–170.
- 50 351 40. Madurell, T., Orejas, C., Requena, S., Gori, A., Purroy, A., Lo Iacono, C., ... Gili, J.M. (2012). The
51 352 benthic communities of the Cap de Creus canyon. In: Würtz, M. (Ed). *Mediterranean Submarine*
52 353 *Canyons: Ecology and Governance. Gland, Switzerland and Málaga, Spain, IUCN. pp. 123-132.*
- 55 354 41. Pavia, G., & Zunino, M. (2008) Progetto di geoconservazione del sito a brachiopodi del Pliocene inferiore
56 355 di Capriglio, Asti. *Geologica Romana* 41: 19–24.
- 58
59
60

- 1
2
3 356 42. Pennington, J.T., Tamburri, M.N., & Barry, J.P. (1999). Development, temperature tolerance, and
4 settlement preference of embryos and larvae of the articulate brachiopod *Laqueus californianus*. The
5 357 Biological Bulletin 196: 245–256.
6 358
7
8 359 43. Pérès, J.-M., & Picard, J. (1964). Nouveau manuel de bionomie benthique de la mer Méditerranée.
9 Récent travaux de la Station Marine d'Endoume, Marseille, 31: pp. 1-138.
10 360
11 361 44. Remia, A., & Taviani, M. (2005). Shallow-buried Pleistocene *Madrepora*-dominated coral mounds on a
12 muddy continental slope, Tuscan Archipelago, NE Tyrrhenian Sea. *Facies* 50: 419–425.
13 362
14 363 45. Roux, A., & Bremec, C.S. (1996). Brachiopoda collected in the Western South Atlantic by R/V Shinkai
15 Maru cruises (1978-1979). [Braquiópodos registrados en el Atlántico sudoccidental durante las campañas
16 364 del BIP Shinkai Maru (1978-1979)]. *Revista de Investigación y Desarrollo Pesquero* 10: 109–114.
17 365
18
19 366 46. de Ruggiero, P., Zanchettin, D., Bensi, M., Hainbucher, D., Stenni, B., Pierini, S., & Rubino, A. (2018).
20 367 Water masses in the Eastern Mediterranean Sea: an analysis of measured isotopic Oxygen. *Pure and*
21 Applied Geophysics 175: 4047–4064.
22 368
23
24 369 47. Runcie, J.W., Gurgel, C.F.D., Mcdermid, K.J. (2008). In situ photosynthetic rates of tropical marine
25 370 macroalgae at their lower depth limit. *European Journal of Phycology* 43: 377–388.
26
27 371 48. Salomidi, M., Katsanevakis, S., Borja, A., Braeckman, U., Damalas, D., Galparsoro, I., ... Vega
28 372 Fernandez, T. (2012). Assessment of goods and services, vulnerability, and conservation status of
29 European seabed biotopes: a stepping stone towards ecosystem-based marine spatial management.
30 373 *Mediterranean Marine Science* 13: 49–88.
31 374
32
33 375 49. Santagata, S. (2015). Brachiopoda. In: Wanninger, A. (Ed.), *Evolutionary Developmental Biology of*
34 *Invertebrates 2*, Springer-Verlag Wien; 263–277.
35 376
36 377 50. Santín, A., Grinyó, J., Ambroso, S., Uriz, M.J., Dominguez-Carrió, C., & Gili, J.M. (2019). Distribution
37 patterns and demographic trends of demosponges at the Menorca Channel (Northwestern Mediterranean
38 378 Sea). *Progress in Oceanography* 173: 9–25.
39 379
40
41 380 51. Simões, M.G., & Kowalewski, M. (2003). Modern accumulations of brachiopod shells in unconsolidated
42 surficial beach deposits, northern coast of São Paulo State, Brazil: taphonomic implications for the
43 381 genesis of skeletal concentration. In 3rd Latin American Congress of Sedimentology, 8-13 June 2003,
44 382 Pará, Belém, Brazil. Abstracts pp. 220–223.
45 383
46 384 52. Simões, M.G., Kowalewski, M., Mello, L.H., Rodland, D.L., & Carroll, M. (2004). Recent brachiopods
47 385 from the southern Brazilian shelf: palaeontological and biogeographical implications. *Palaeontology* 47:
48 386 515–533.
49 387
50
51 387 53. Simões, M.G., Rodrigues, S.C., de Moraes Leme, J., & Pires-Domingues, R.A. (2007). Brachiopod shells
52 388 on the beach: Taphonomic overprinting in a fair-weather shell accumulation. *Journal of Taphonomy* 5:
53 389 205–225.
54 388
55 389
56
57 390 54. SPA/RAC–UN Environment/MAP, OCEANA (2017). Guidelines for inventorying and monitoring of
58 391 dark habitats in the Mediterranean Sea. Gerovasileiou, V., Auguilar, R., & Marín, P. (Eds.) SPA/RAC -
59 392 Deep Sea Lebanon Project. Tunis, Tunisia. pp. 1-40.

- 1
2
3 393 55. Taddei Ruggiero, E., Buono, R., & Raia, P. (2006). Bioerosion on brachiopod shells of a thanotocoenosis
4 394 of Alboran Sea (Spain). *Ichnos* 13: 175-184.
- 6 395 56. Taviani, M., Angeletti, L., Canese, S., Cannas, R., Cardone, F., Cau, A., ... Montagna, P. (2017). The
7 396 "Sardinian cold-water coral province" in the context of the Mediterranean coral ecosystems. *Deep Sea*
9 397 *Research Part II: Topical Studies in Oceanography* 145: 61–78.
- 11 398 57. Tunnicliffe, V., & Wilson, K. (1988). Brachiopod populations: distribution in fjords of British Columbia
12 399 (Canada) and tolerance of low oxygen concentrations. *Marine Ecology Progress Series* 47: 117–128.
- 14 400 58. Ye, F., Crippa, G., Angiolini, L., Brand, U., Capitani, G., Cusack, M., ... Shmahal, W. (2018). Mapping
15 401 of recent brachiopod microstructure: a tool for environmental and climate studies. *Journal of Structural*
17 402 *Biology* 201: 221-236.
- 19 403 59. WoRMS Editorial Board (2019). World Register of Marine Species. Available from
20 404 <http://www.marinespecies.org> at VLIZ. Accessed 2019-3-29. doi:10.14284/170
- 22 405
23
24 406

1
2
3 407 **Figure captions**

4 408

5 409

6 410

7 411

8 412

9 413

10 414

11 415

12 416

13 417

14 418

15 419

16 420

17 421

18 422

19 423

20 424

21 425

22 426

23 427

24 428

25 429

26 430

27 431

28 432

29 433

30 434

31 435

32 436

33 437

34 438

35 439

36 440

37 441

38 442

39 443

40 444

41 445

42 446

43 447

44 448

45 449

46 450

47 451

48 452

49 453

50 454

51 455

52 456

53 457

54 458

55 459

56 460

Figure 1. Location and morphobathymetric maps of the investigated area. Habitats along the ROV path are also shown on the backscatter and aspect maps.

Figure 2. Main characteristics of biotopes in the area. a) Brachiopod biotope, bar = 20 cm; b) Rhodolith bed, with *Poecillastra compressa*, bar = 20 cm; c) detail of the Brachiopod biotope, note substrate occupancy by brachiopods and crustose coralline algae (CCA), bar = 10 cm; d) detail of the Brachiopod biotope showing a predominance of *Hexadella pruvoti* (yellow sponge) and CCA over *Megerlia truncata*, bar = 10 cm; e) co-dominance of CCA, *Megerlia truncata* and sponges, bar = 10 cm; f) *Filograna/Salmacina* complex with the sponges *Axinella vacaleti* and *A. verrucosa*, bar = 20 cm.

Figure 3. a) Dense *Megerlia truncata* aggregations (> 350 individuals/0.36 m²), bar = 10 cm; b) 3-D image of a block covered by brachiopods; c-d) photograph of brachiopod biotope and related artistic cartoon highlighting living and dead *Megerlia truncata*, bar = 10 cm; e-g) station COC13-29, sediment collected by grab from the Rhodolith bed: e) gravel-size/coarse sand fraction (> 1 cm), Rhodalgal facies showing the absolute prevalence of rhodolith nodules over other biogenic components, bar = 3 cm; f) Foramol facies of sand fraction (> 1 mm), S = serpulid, By = bryozoan, Bi = bivalve, G = gastropod (juvenile of *Bolma rugosa*), bar = 1 mm; g) fine fraction > 63 μm, brachiopod (B), bryozoan (By), foraminifer (F), bar = 0.5 mm.

Figure 4. Core and buffer areas deserving adequate protection to protect the Brachiopod biotope and adjacent Rhodolith bed.

435 **Tables**436 **Table 1.** ROV metadata.

Cruise	Station	Date	Start lat N [deg/min]	Start long E [deg/min]	Start depth [m]	End lat N [deg/min]	End long E [deg/min]	End depth [m]
COCOMAP13	coc13_28_rov	30/05/2013	40.0128	19.5605	106	40.0173	19.5576	113

For Peer Review

1
2
3
4
5
6
7
8
9
10
11
12
13
14
15
16
17
18
19
20
21
22
23
24
25
26
27
28
29
30
31
32
33
34
35
36
37
38
39
40
41
42
43
44
45
46
47
48
49
50
51
52
53
54
55
56
57
58
59
60

Table 2. Living macroorganisms observed or sampled in the explored area. B indicates organisms that pertain to the newly described Brachiopod biotope while R to the surrounding Rhodolith bed. Asterisks indicate the legal instruments under which the species are protected: *Bern Convention, Appendix II, III (Convention on the Conservation of European Wildlife and Natural Habitats); **CITES, Appendix II (Convention on International Trade in Endangered Species of Wild Fauna and Flora); ***ASPIM Annex II, III; ****Habitat Directive, Annex II, IV, V.

	Phylum	Class	Taxon	Habitat
1	Rhodophyta	Florideophyceae	Crustose Coralline Algae (CCA)	Rb, B
2	Foraminifera	Monothalamea	<i>Pelosina</i> sp.	Rb
3		Globothalamea	<i>Miniacina miniacina</i> (Pallas, 1766)	B
	Porifera	Demospongiae	sp. 1	Rb
			sp. 2	B
			sp. 3	B
			sp. 4	Rb
			sp. 5	B
			sp. 6	Rb, B
4			Tetractinellida spp.	B
5			cf. <i>Poecillastra compressa</i> (Bowerbank, 1866)	Rb, B
			cf. <i>Suberites syringella</i> (Schmidt, 1868)	B
6			<i>Penares helleri</i> (Schmidt, 1864)	B
7			cf. <i>Rhabderemia</i> sp.	B
8			<i>Hamacantha</i> cf. <i>falcula</i> (Bowerbank, 1874)	B
9			<i>Mycale</i> sp.	Rb
10			cf. <i>Raspaciona aculeata</i> (Johnston, 1842)	B
11			<i>Axinella vacoleti</i> Pansini, 1984	B
12			<i>Axinella verrucosa</i> (Esper, 1794)	B
13			<i>Dendroxea</i> cf. <i>lenis</i> (Topsent, 1892)	B
14			<i>Haliclona</i> sp.	B
15			<i>Aplysina cavernicola</i> (Vacelet, 1959)*	Rb/B
17			<i>Hexadella pruvoti</i> Topsent, 1896	B
23	Cnidaria		Hydrozoa spp.	B
24		Anthozoa	<i>Alcyonium palmatum</i> Pallas, 1766	B
25			Cerianthidae sp.	B
26			cf. <i>Hormathia coronata</i> (Gosse, 1858)	B
27			Actiniaria sp. 1	B

1					
2					
3	28			<i>Caryophyllia calveri</i> Duncan, 1873**	B
4	29	Mollusca	Gastropoda	cf. <i>Jujubinus exasperatus</i> (Pennant, 1777)	B
5	30		Cephalopoda	<i>Sepia officinalis</i> Linnaeus, 1758	Rb
6	31	Annelida	Polychaeta	<i>Bonellia viridis</i> Rolando, 1822	Rb/B
7	32			Sabellidae spp.	Rb/B
8	33			<i>Serpula vermicularis</i> Linnaeus, 1767	B
9	34			<i>Protula tubularia</i> (Montagu, 1803)	B
10	35			<i>Filograna/Salmacina</i> complex	B
11	36			Serpulidae spp.	Rb/B
12	37	Arthropoda	Malacostraca	<i>Plesionika narval</i> (Fabricius, 1787)	Rb/B
13	38			<i>Palinurus elephas</i> (Fabricius, 1787)*, ***	Rb
14	39	Brachiopoda	Rhynchonellata	<i>Megerlia truncata</i> (Linnaeus, 1767)	B
15	40	Echinodermat	Echinoidea	<i>Stylocidaris affinis</i> (Philippi, 1845)	Rb/B
16	a				
17	41			<i>Centrostephanus longispinus</i> (Philippi, 1845)*, ***, ****	B
18	42	Echinodermat	Asteroidea	<i>Peltaster placenta</i> (Müller & Troschel, 1842)	B
19	a				
20	43			cf. <i>Hacelia attenuata</i> (Gray, 1840)	B
21	44	Chordata	Tunicata	cf. <i>Clavelina lepadiformis</i> (Müller, 1776)	B
22	45		Actinopterygii	<i>Macroramphosus scolopax</i> (Linnaeus, 1758)	Rb
23	46			<i>Callanthias ruber</i> (Rafinesque, 1810)	B
24	47			<i>Facciolella oxyrhyncha</i> (Bellotti, 1883)	B
25	48			<i>Ariosoma balearicum</i> (Delaroche, 1809)	Rb
26	49			<i>Chlorophthalmus agassizi</i> Bonaparte, 1840	Rb
27	50			cf. <i>Molva macrophthalma</i> (Rafinesque, 1810)	Rb
28	51			<i>Phycis phycis</i> (Linnaeus, 1766)	B
29	52			<i>Pagellus erythrinus</i> (Linnaeus, 1758)	Rb
30	53			<i>Pagrus pagrus</i> (Linnaeus, 1758)	B
31	54			<i>Spondyliosoma cantharus</i> (Linnaeus, 1758)	Rb
32	55			<i>Spicara smaris</i> (Linnaeus, 1758)	Rb/B
33	56			<i>Spicara</i> sp.	B

48 446

49

50 447

51

52

53 448

54

55 449

56

57

58 450

59

60

1
2
3
4
5
6
7
8
9
10
11
12
13
14
15
16
17
18
19
20
21
22
23
24
25
26
27
28
29
30
31
32
33
34
35
36
37
38
39
40
41
42
43
44
45
46
47
48
49
50
51
52
53
54
55
56
57
58
59
60

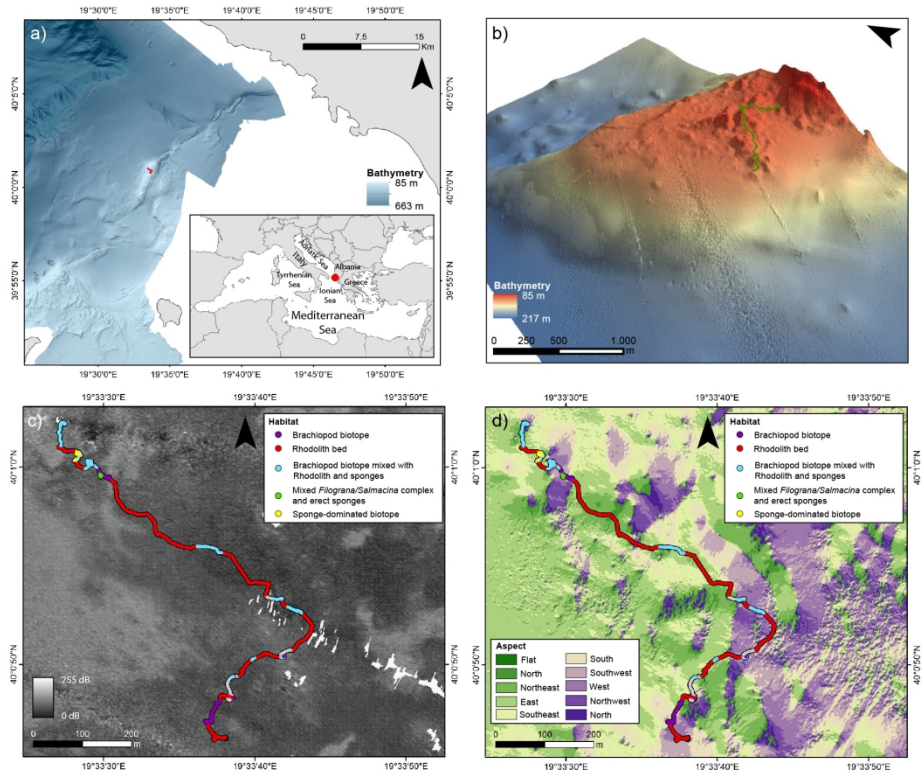


Figure 1. Location and morphobathymetric maps of the investigated area. Habitats along the ROV path are also shown on the backscatter and aspect maps.

176x137mm (300 x 300 DPI)

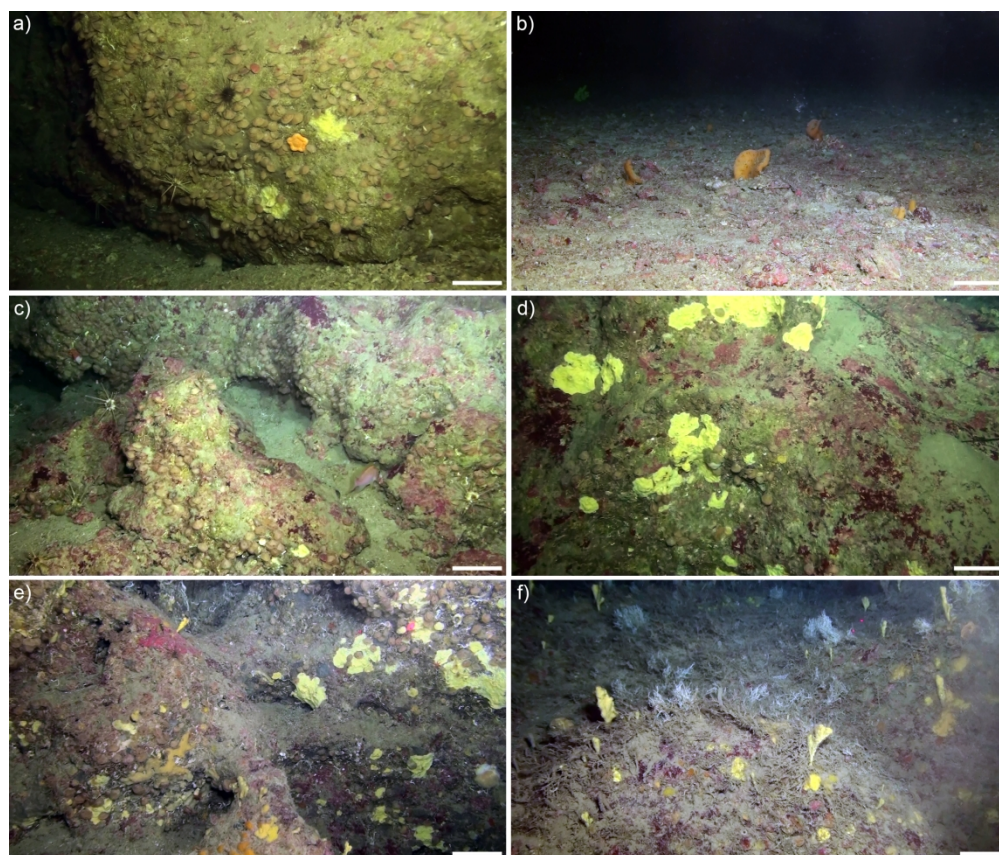


Figure 2. Main characteristics of biotopes in the area. a) Brachiopod biotope, bar = 20 cm; b) Rhodolith bed, with *Poecillastra compressa*, bar = 20 cm; c) detail of the Brachiopod biotope, note substrate occupancy by brachiopods and crustose coralline algae (CCA), bar = 10 cm; d) detail of the Brachiopod biotope showing a predominance of *Hexadella pruvoti* (yellow sponge) and CCA over *Megerlia truncata*, bar = 10 cm; e) co-dominance of CCA, *Megerlia truncata* and sponges, bar = 10 cm; f) *Filograna/Salmacina* complex with the sponges *Axinella vacoleti* and *A. verrucosa*, bar = 20 cm.

209x178mm (300 x 300 DPI)

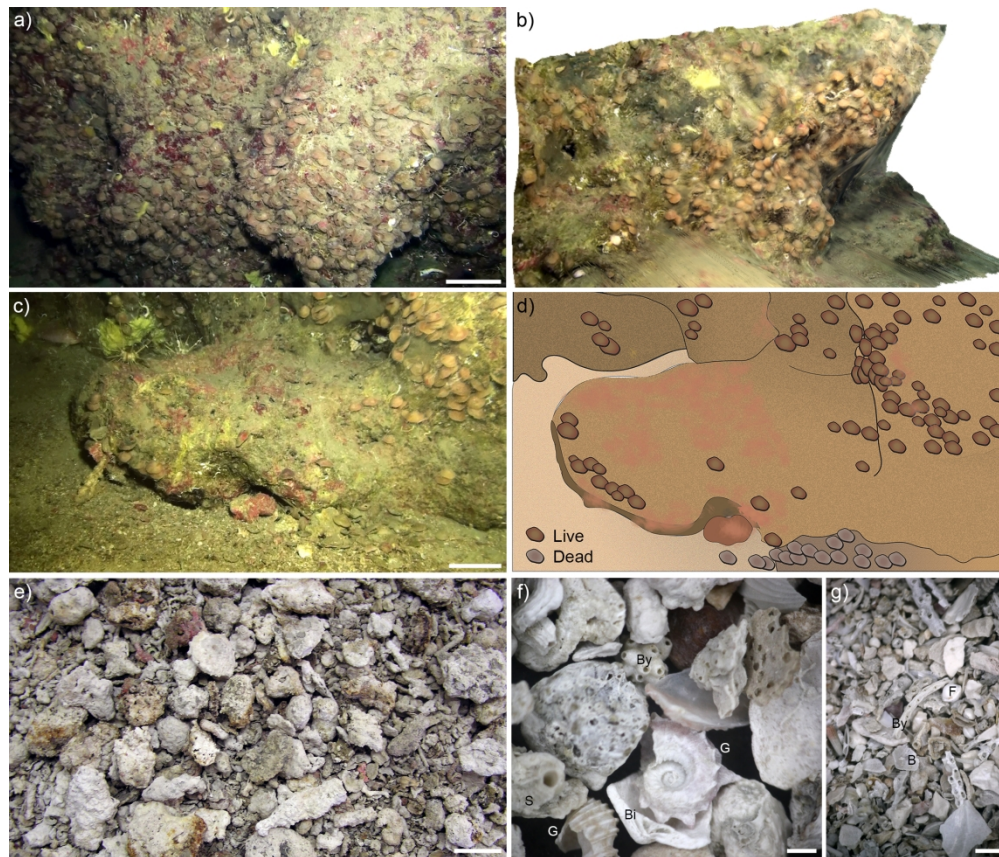


Figure 3. a) Dense *Megerlia truncata* aggregations (> 350 individuals/ 0.36 m 2), bar = 10 cm; b) 3-D image of a block covered by brachiopods; c-d) photograph of brachiopod biotope and related artistic cartoon highlighting living and dead *Megerlia truncata*, bar = 10 cm; e-g) station COC13-29, sediment collected by grab from the Rhodolith bed: e) gravel-size/coarse sand fraction (> 1 cm), Rhodalgal facies showing the absolute prevalence of rhodolith nodules over other biogenic components, bar = 3 cm; f) Foramol facies of sand fraction (> 1 mm), S = serpulid, By = bryozoan, Bi = bivalve, G = gastropod (juvenile of *Bolma rugosa*), bar = 1 mm; g) fine fraction > 63 μ m, brachiopod (B), bryozoan (By), foraminifer (F), bar = 0.5 mm.

209x178mm (300 x 300 DPI)

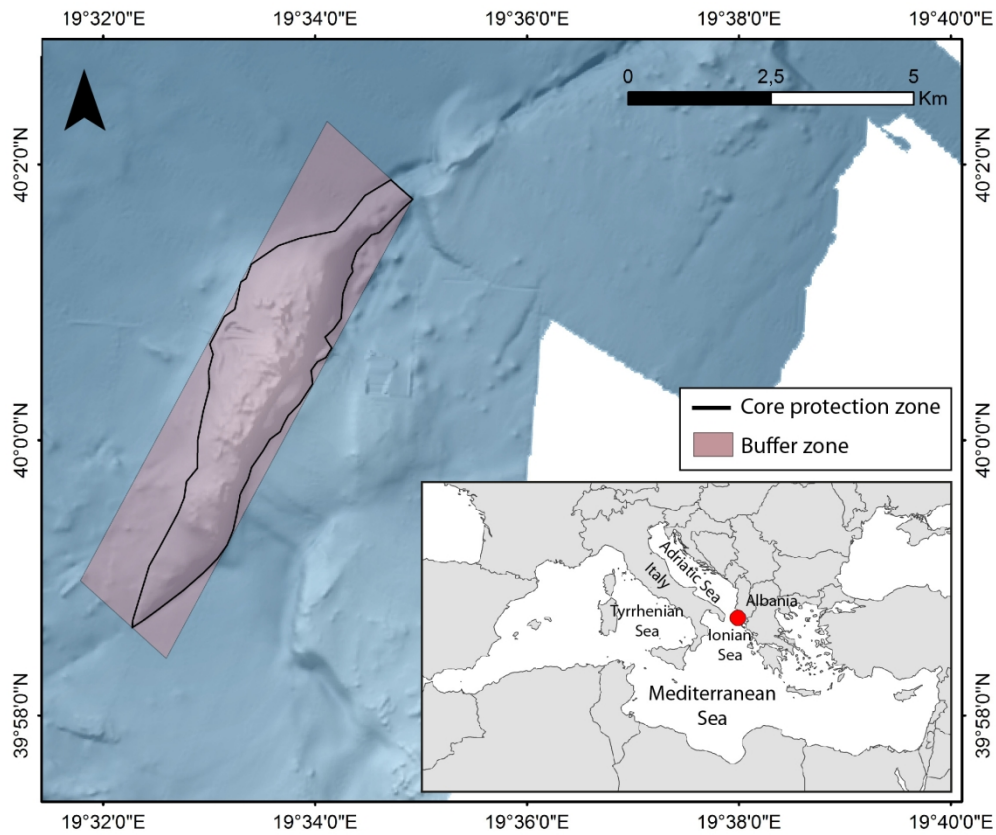


Figure 4. Core and buffer areas deserving adequate protection to protect the Brachiopod biotope and adjacent Rhodolith bed.

170x143mm (300 x 300 DPI)