

## **Prognostic effect of body mass index in patients with advanced NSCLC treated with chemo-immunotherapy combinations**

Cortellini A et al.

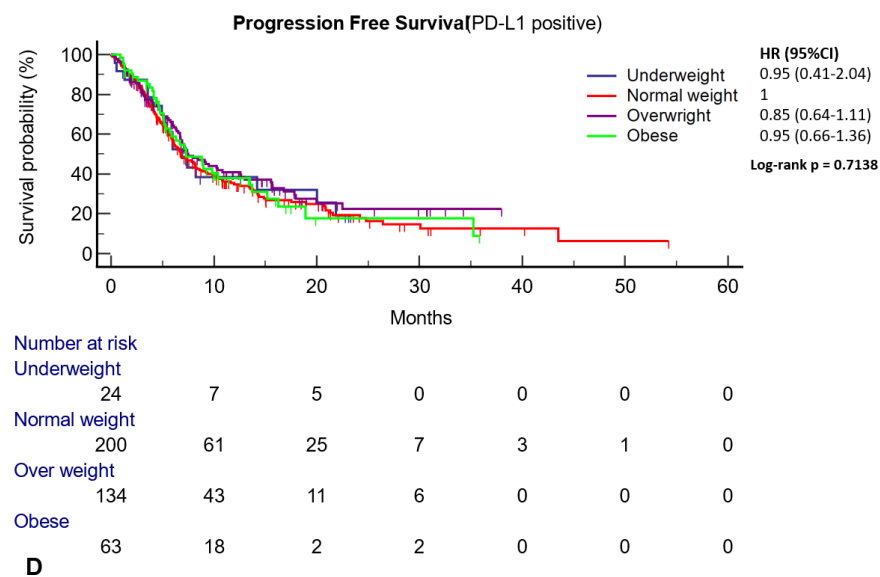
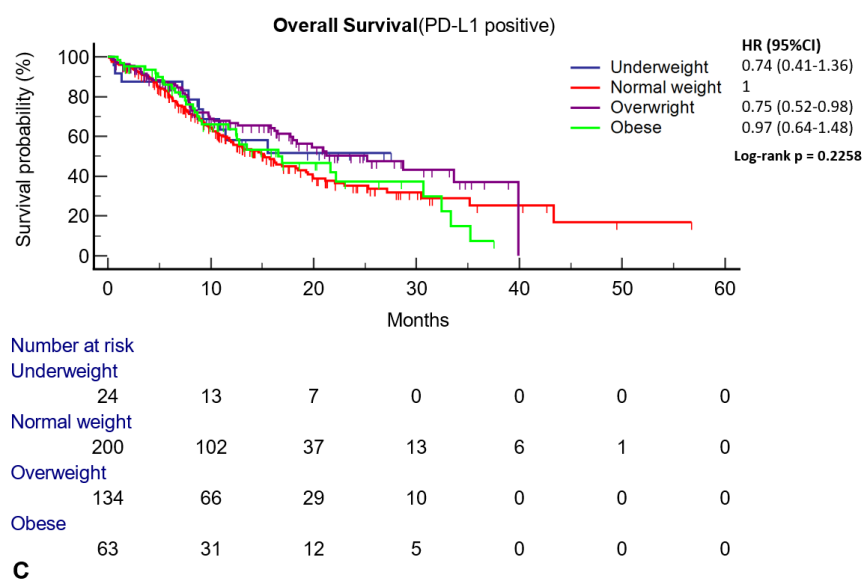
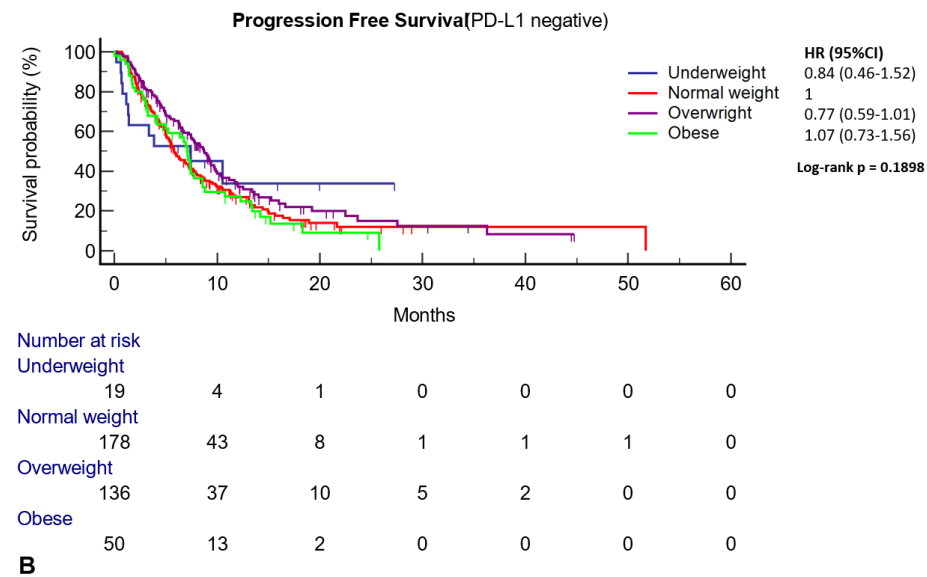
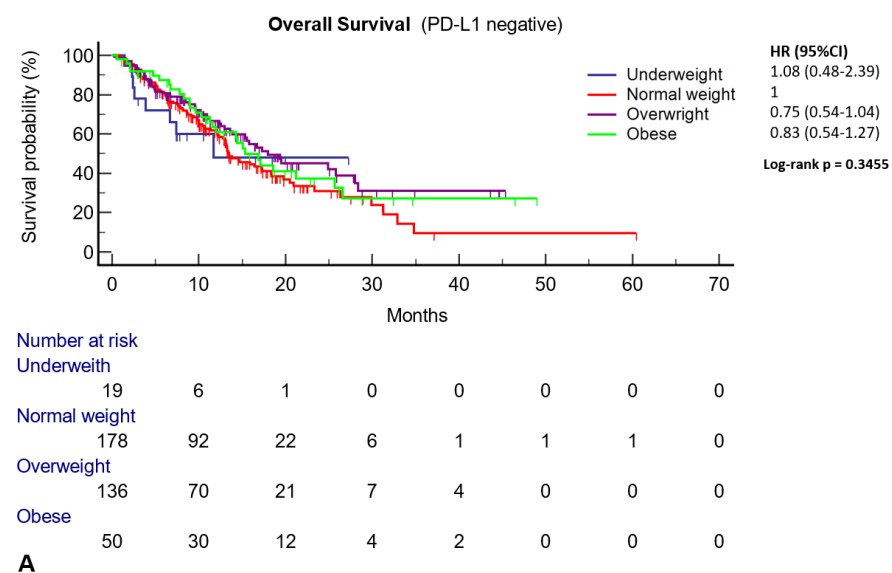
### **Contents**

<b>Supplementary Table 1</b>	<b>Page 2</b>
Participating centres	
<b>Supplementary Figure 1</b>	<b>Page 3</b>
Exploratory analysis including patients with PD-L1 negative and positive tumours	
<b>Supplementary Figure 2</b>	<b>Page 4</b>
Exploratory analysis including patients with PD-L1 $\geq 50\%$ and 1-49%.	
<b>Supplementary Figure 3</b>	<b>Page 5</b>
Exploratory analysis including only patients with ECOG-PS of 0-1.	

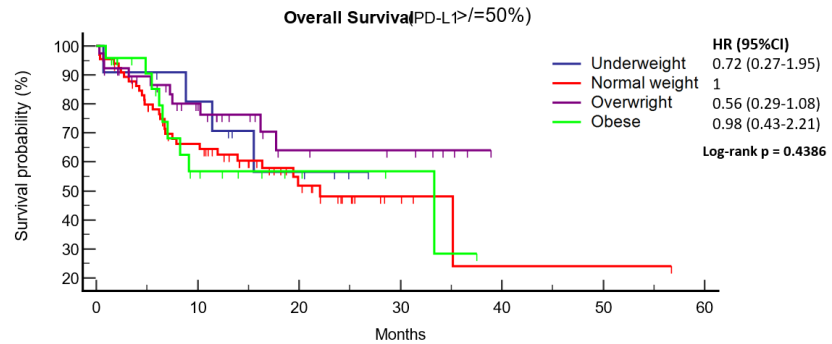
**Supplementary Table 1.** Participating centres

<b>Institution</b>	<b>Patients (%)</b>
Imperial College London, London, UK	36 (4.2)
Chelsea and Westminster	16 (1.9)
Portsmouth University Hospitals, Portsmouth, UK	61 (7.1)
United Lincolnshire Hospital, Lincoln, UK	24 (2.8)
University Hospitals Bristol and Weston, Bristol, UK	52 (6.1)
University Hospital Southampton, Southampton, UK	42 (4.2)
University Hospital of Geneva, Geneva, Switzerland	21 (2.5)
Hospital de la Santa Creu i Sant Pau, Barcelona, Spain	19 (2.2)
Hospital Clinic de Barcelona, Barcelona, Spain	53 (6.2)
Institut Gustave Roussy, Villejuif, France	128 (15.0)
Université catholique de Louvain, Louvain, Belgium	73 (8.6)
Dana Farber Cancer Institute, Boston, MA, US	298 (34.9)
S. Orsola Maripighi University Hospital, Bologna, Italy	20 (2.3)
Ospedal Mauriziano di Torino, Italy	10 (1.2)

**Supplementary Figure 1: Kaplan-Meier survival estimates.** PD-L1 negative patients **A)** Overall Survival: Underweight: 11.7 months (95%CI: 3.8 – 11.7, 8 events), Normal-weight: 13.4 months (95%CI: 12.7-17.3, 94 events), Overweight: 17.9 months (95%CI: 13.9-28.0, 56 events), Obese: 15.3 months (95%CI: 11.2-25.6, 27 events). **B)** Progression Free Survival: Underweight: 7.4 months (95%CI: 1.2 – 10.5, 11 events), Normal-weight: 5.8 months (95%CI: 5.1-7.2, 132 events), Overweight: 8.7 months (95%CI: 7.2-9.7, 91 events), Obese: 7.1 months (95%CI: 4.2-8.6, 41 events). PD-L1 positive patients **C)** Overall Survival: Underweight: not reached (10 events), Normal-weight: 15.2 months (95%CI: 11.9-19.2, 104 events), Overweight: 25.2 months (95%CI: 17.7-39.9, 51 events), Obese: 16.6 months (95%CI: 15.2-21.2, 31 events). **D)** Progression Free Survival: Underweight: 6.9 months (95%CI: 4.9 – 20.1, 17 events), Normal-weight: 6.7 months (95%CI: 5.9-8.3, 140 events), Overweight: 7.5 months (95%CI: 6.7-10.8, 79 events), Obese: 7.3 months (95%CI: 5.2-13.5, 39 events).

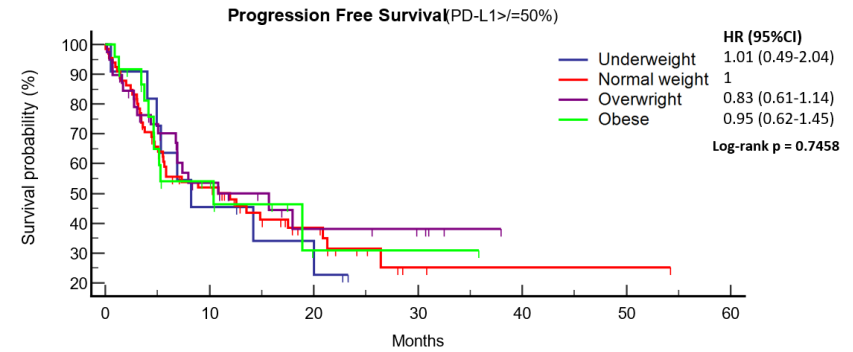


**Supplementary Figure 2:** Kaplan-Meier survival estimates. Patients with PD-L1  $\geq 50\%$  **A)** Overall Survival: Underweight: not reached (4 events), Normal-weight: 22.6 months (95%CI: 11.9-35.2, 29 events), Overweight: not reached (10 events), Obese: 33.3 months (95%CI: 6.5-33.3, 9 events). **B)** Progression Free Survival: Underweight: 8.2 months (95%CI: 4.0 – 20.0, 8 events), Normal-weight: 11.9 months (95%CI: 5.5-20.9, 39 events), Overweight: 15.7 months (95%CI: 6.7-17.9, 19 events), Obese: 10.4 months (95%CI: 4.6-18.9, 11 events). Patients with PD-L1 1-49% **C)** Overall Survival: Underweight: 10.8 months (95%CI: 7.2-10.8, 6 events), Normal-weight: 13.1 months (95%CI: 10.7-16.2, 75 events), Overweight: 20.9 months (95%CI: 12.6-33.6, 41 events), Obese: 16.5 months (95%CI: 11.7-30.6, 22 events). **D)** Progression Free Survival: Underweight: 5.9 months (95%CI: 1.3 – 21.8, 9 events), Normal-weight: 6.7 months (95%CI: 5.8-8.1, 101 events), Overweight: 7.1 months (95%CI: 6.1-10.2, 60 events), Obese: 7.3 months (95%CI: 5.1-9.8, 28 events).



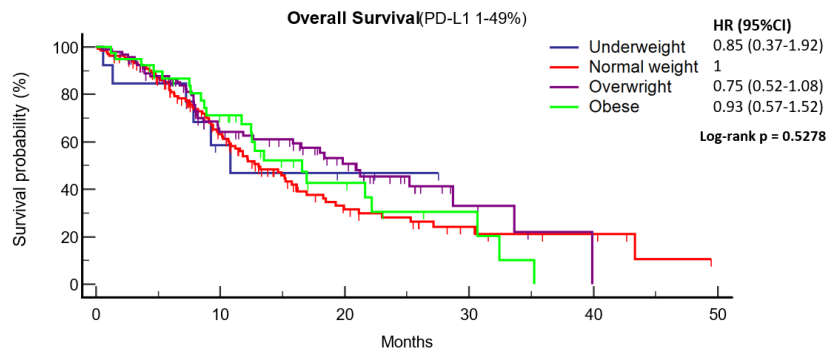
Number at risk						
Underweight	11	8	4	0	0	0
Normal weight	66	38	17	4	1	1
Overweight	39	22	8	6	0	0
Obese	24	9	4	2	0	0

**A**



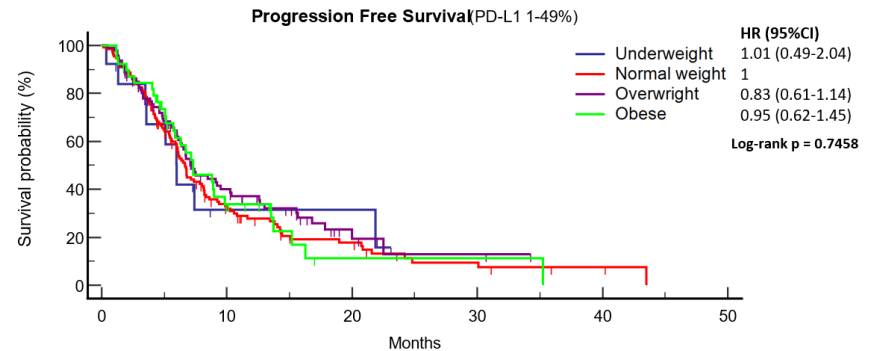
Number at risk						
Underweight	11	5	3	0	0	0
Normal weight	66	29	12	2	1	1
Overweight	39	15	6	4	0	0
Obese	24	8	1	1	0	0

**B**



Number at risk					
Underweight	13	5	3	0	0
Normal weight	134	64	20	9	5
Overweight	95	44	21	4	0
Obese	39	22	8	3	0

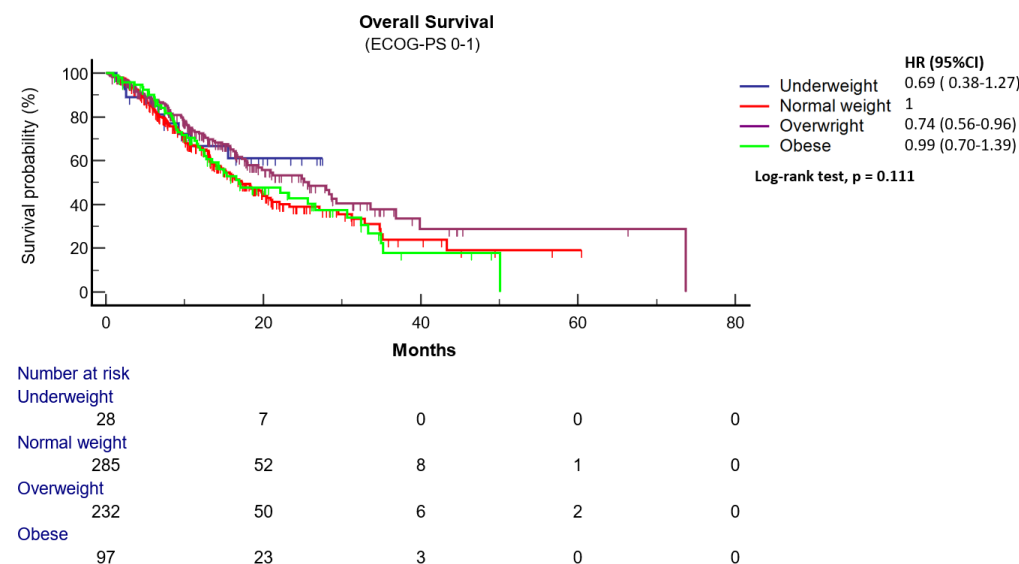
**C**



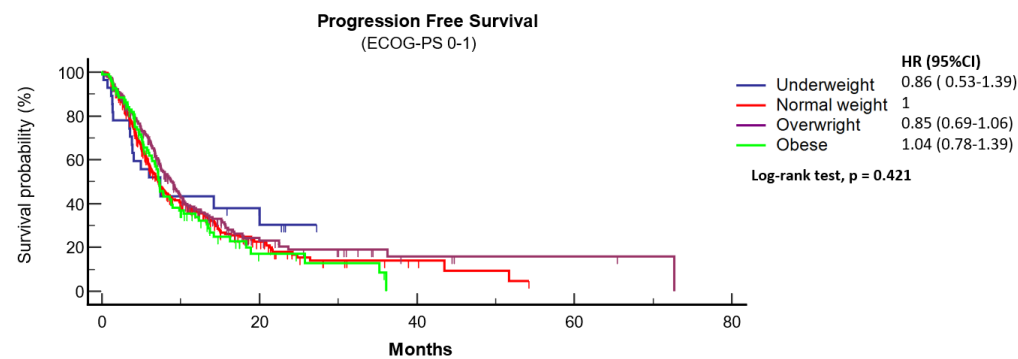
Number at risk					
Underweight	13	2	2	0	0
Normal weight	134	32	13	5	2
Overweight	95	28	5	2	0
Obese	39	10	1	1	0

**D**

**Supplementary Figure 3:** Kaplan-Meier survival estimates. Patients with ECOG-PS of 0-1. **A)** Overall Survival: Underweight: not reached (9 events), Normal-weight: 17.3 months (95%CI: 14.6-20.9, 133 events), Overweight: 25.8 months (95%CI: 18.0-33.6, 87 events), Obese: 16.9 months (95%CI: 12.7-26.6, 50 events). **B)** Progression Free Survival: Underweight: 7.4 months (95%CI: 3.6 – 20.1, 17 events), Normal-weight: 7.2 months (95%CI: 6.1-8.4, 194 events), Overweight: 8.9 months (95%CI: 7.5-10.0, 148 events), Obese: 7.3 months (95%CI: 6.3-8.8, 67 events).



A



Number at risk					
Underweight	28	5	0	0	0
Normal weight	285	29	4	0	0
Overweight	232	19	4	2	0
Obese	97	5	0	0	0

B

5