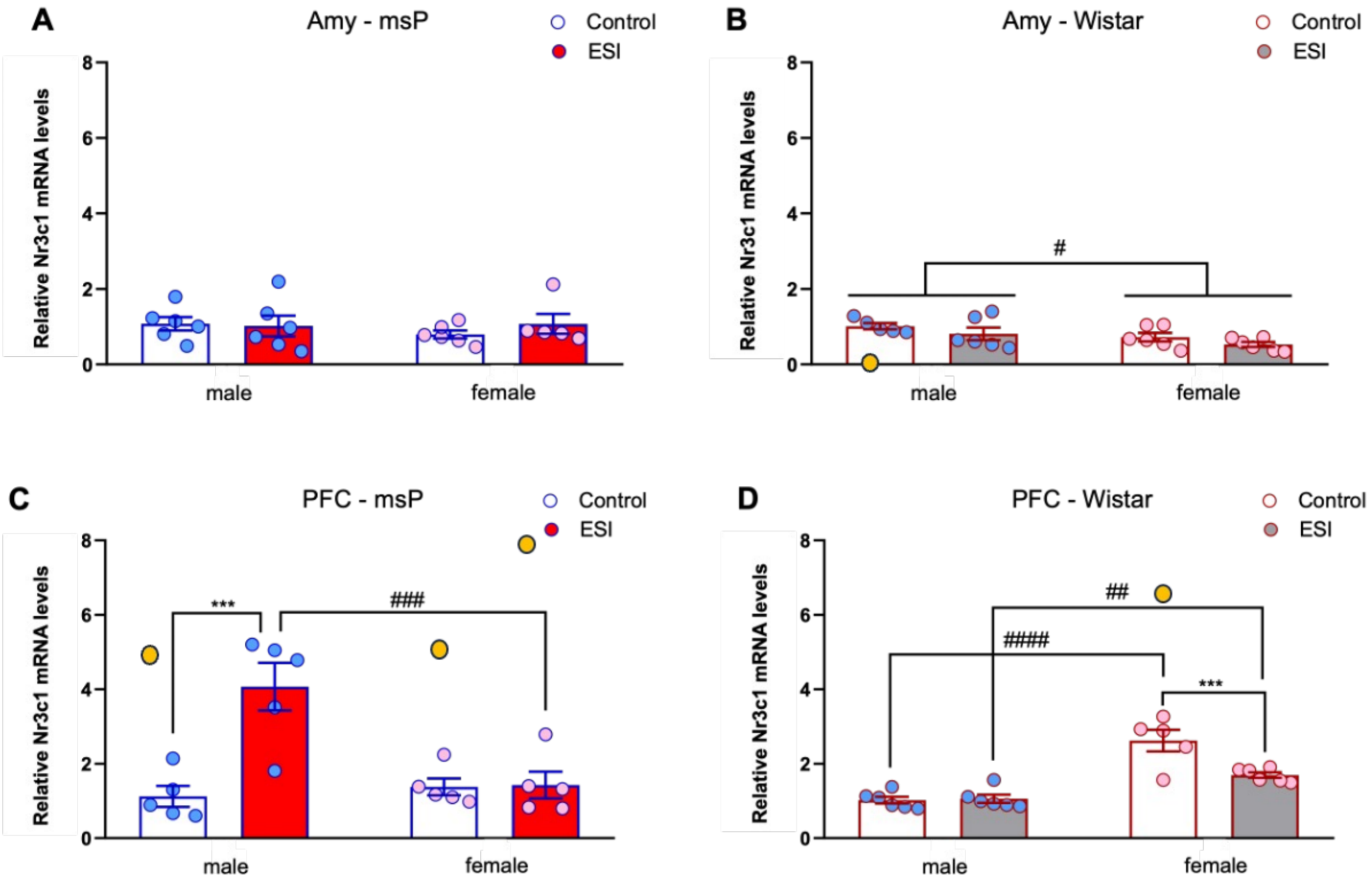
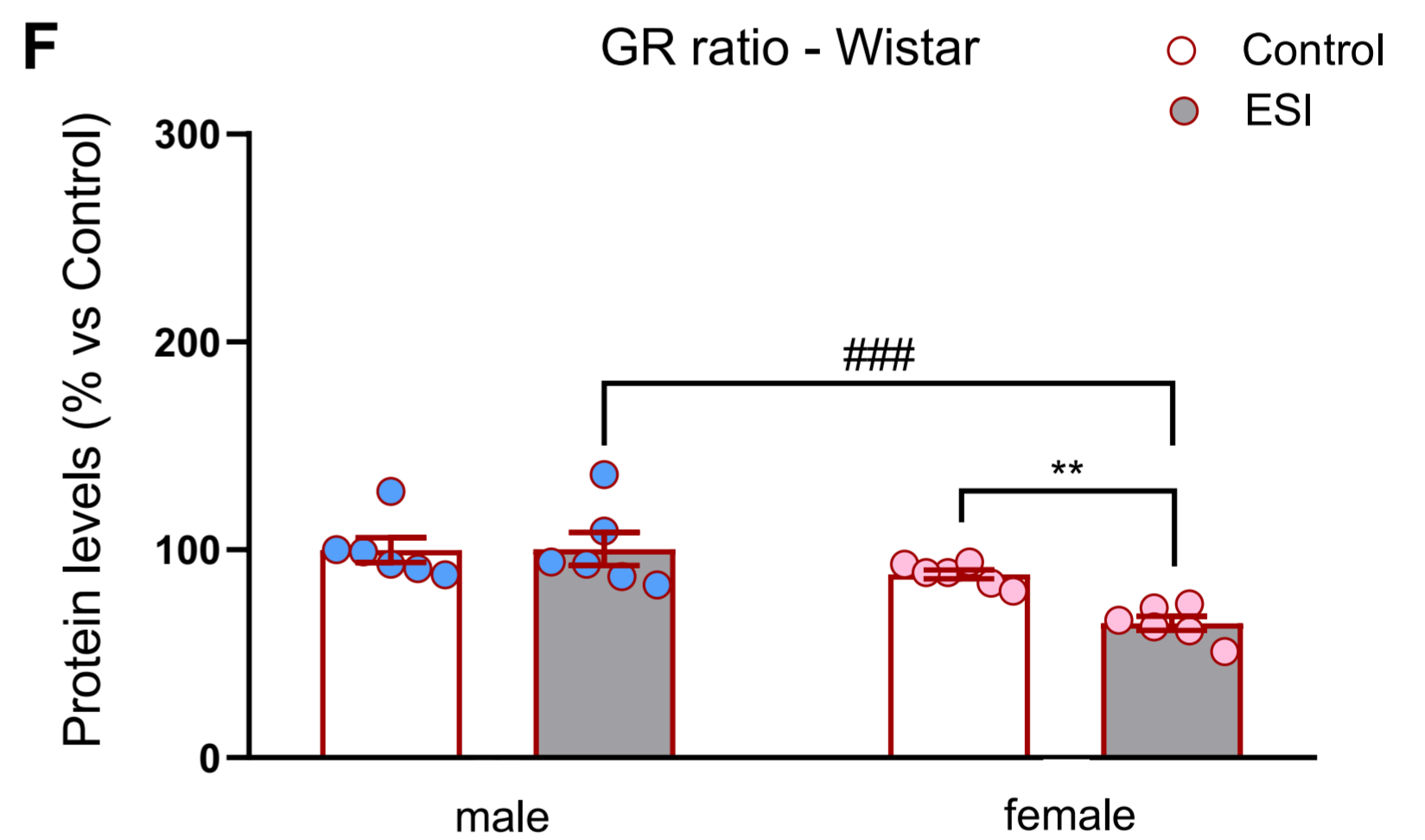
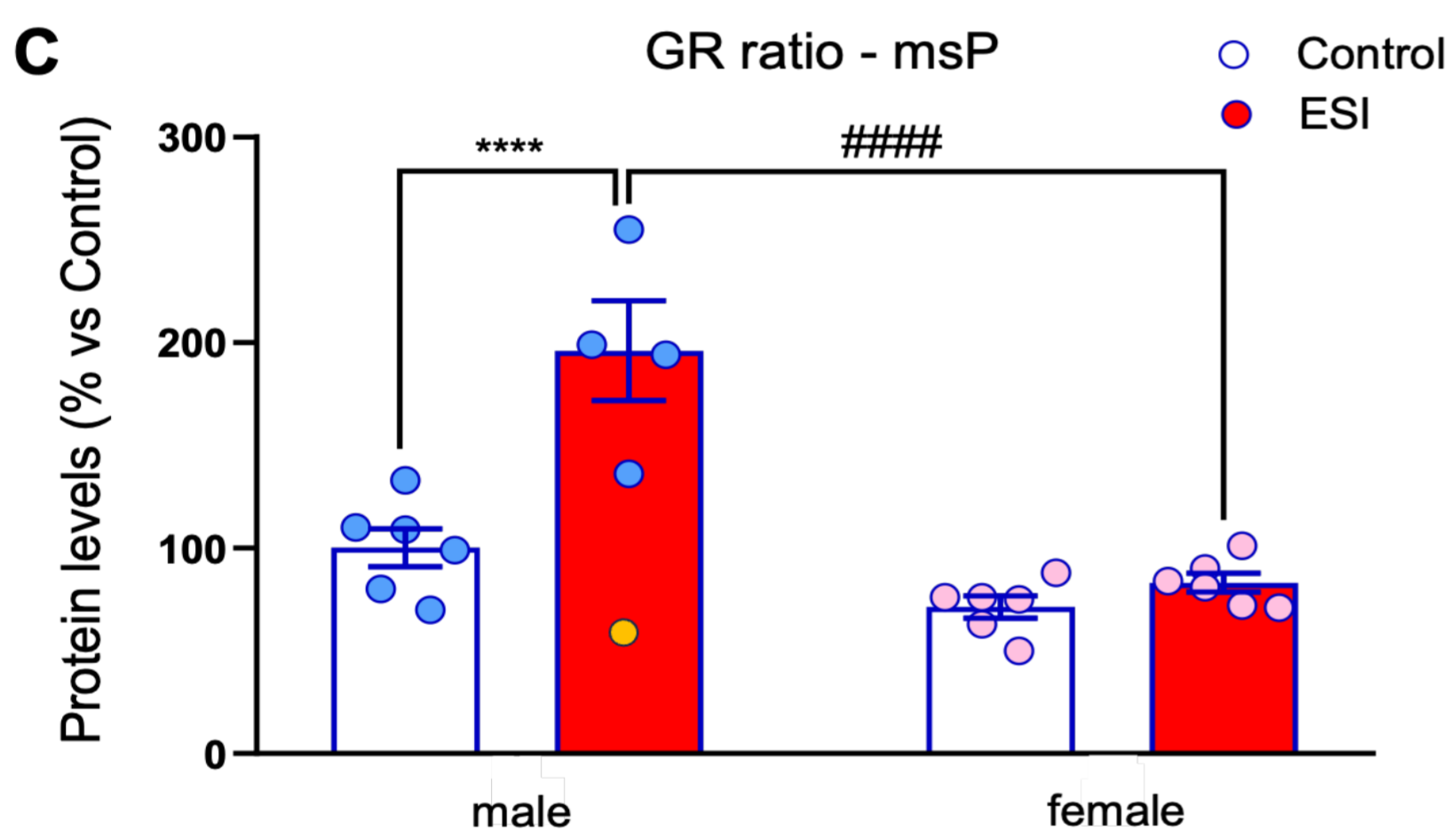
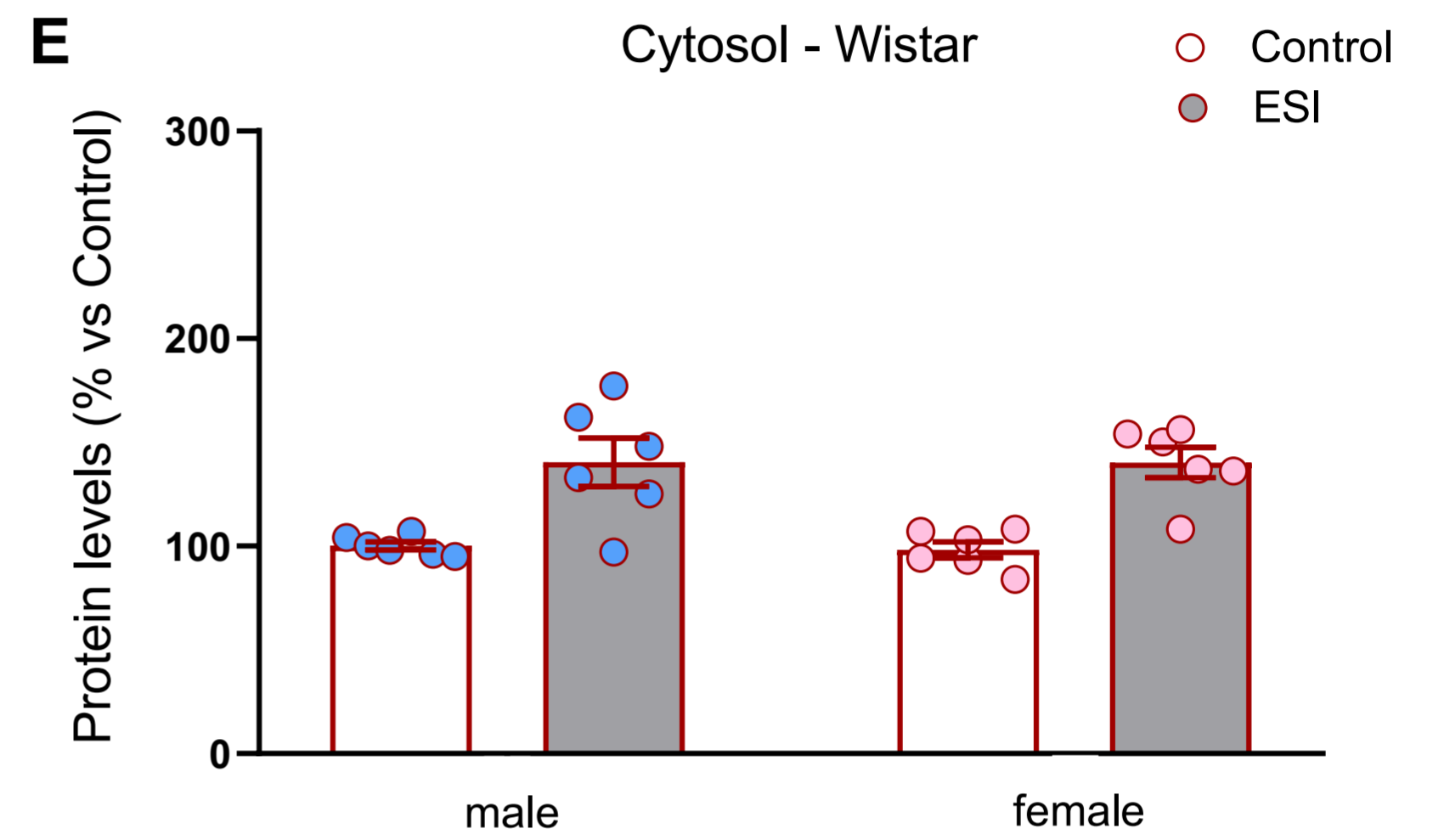
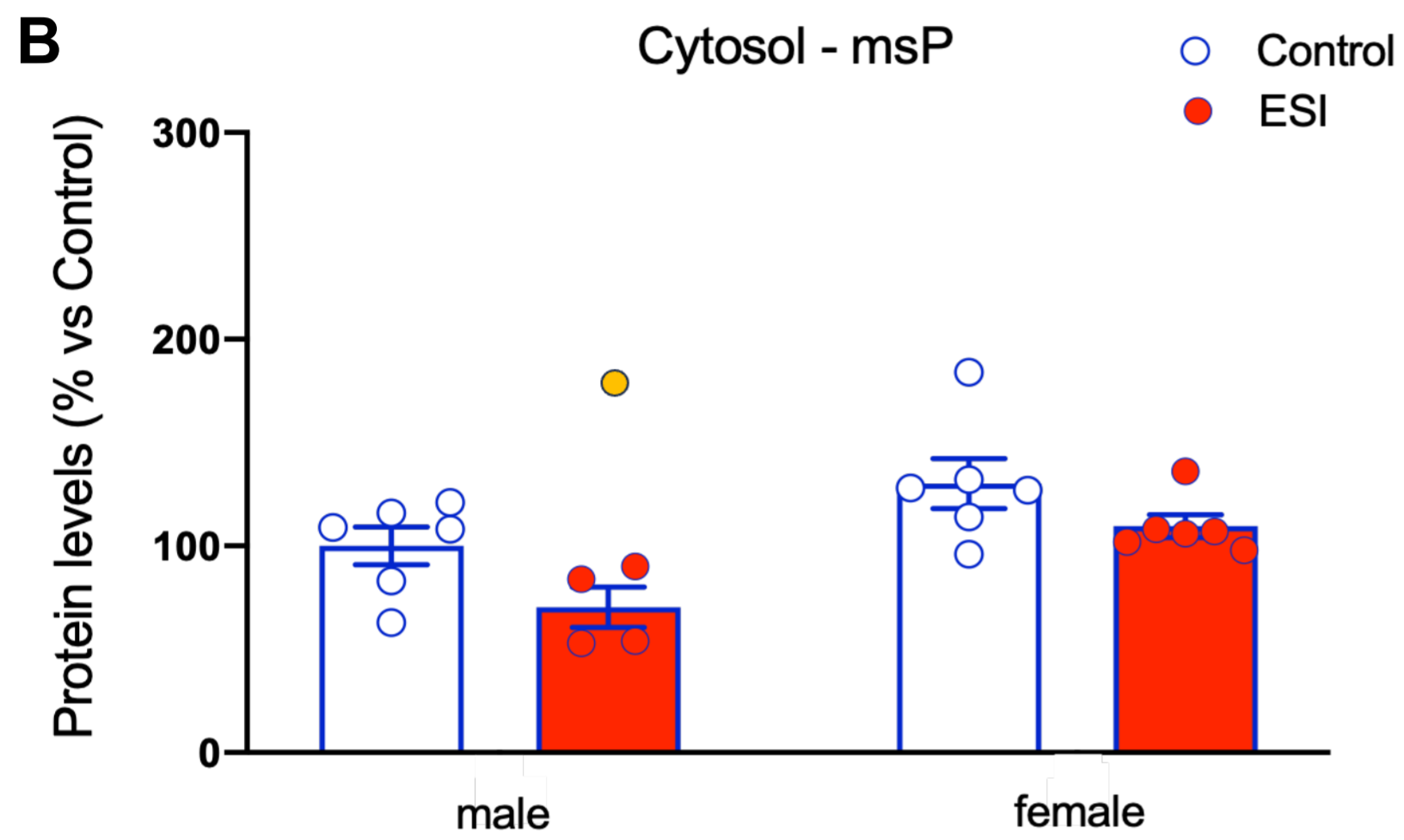
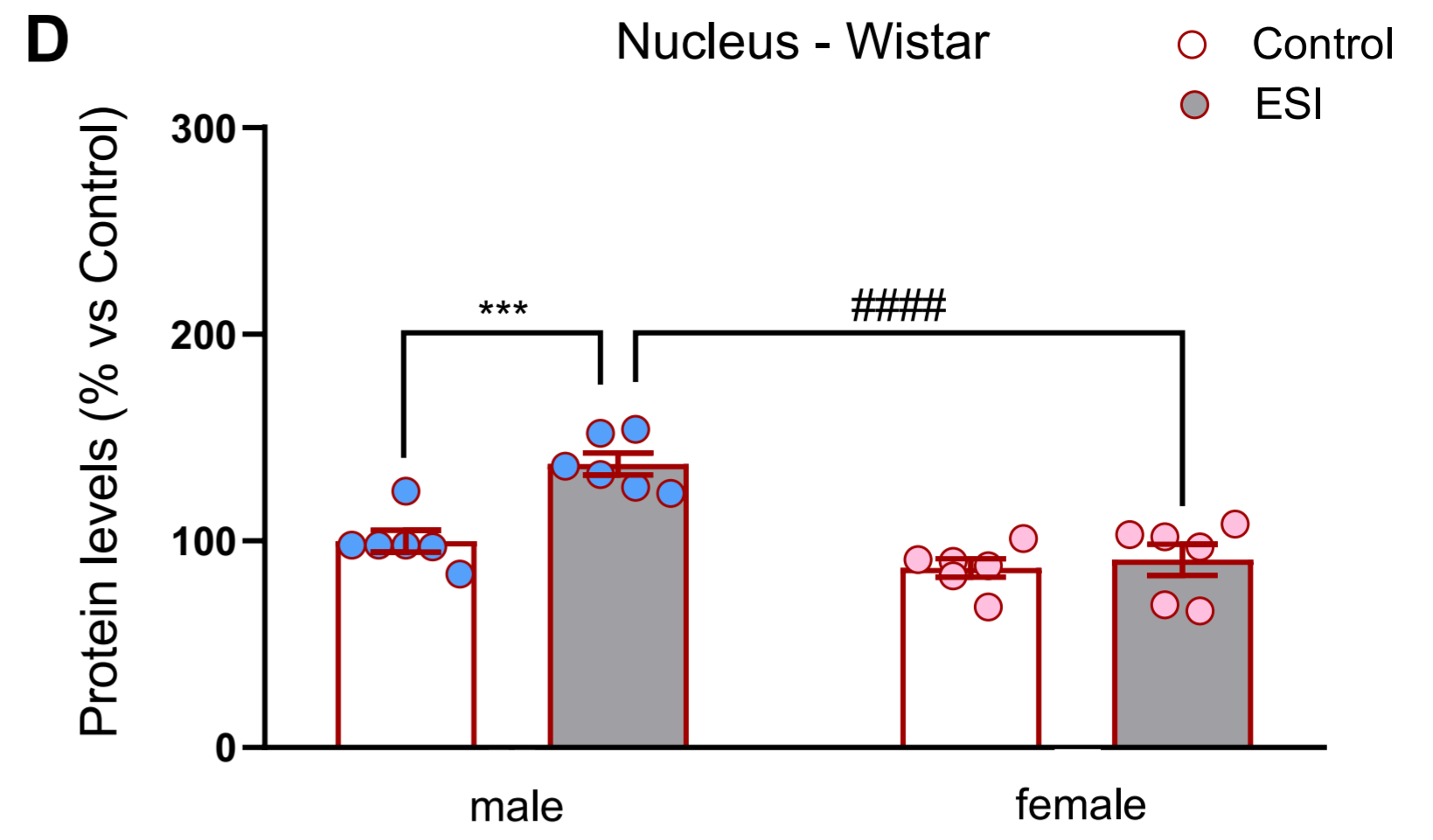
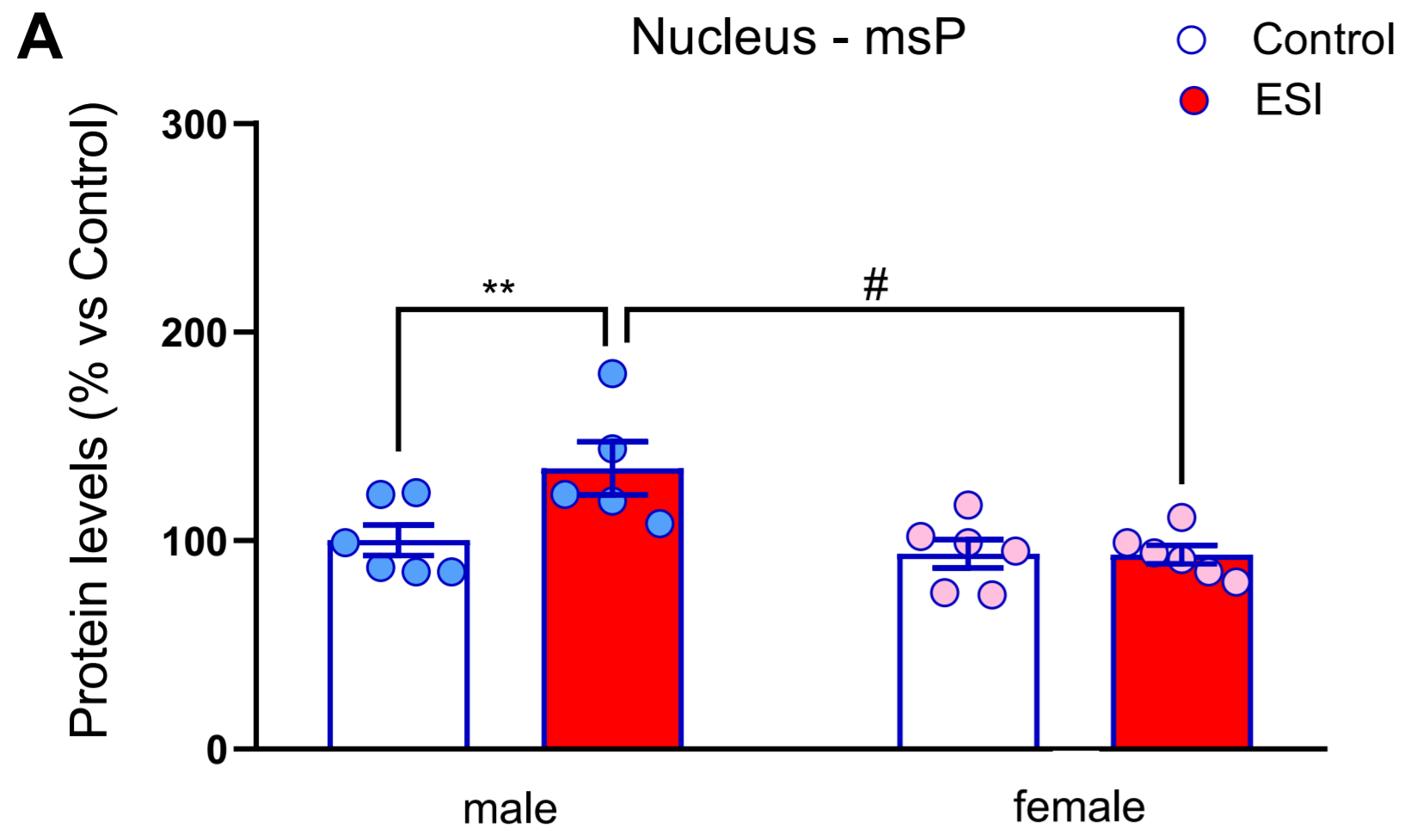


Supplementary figure S1. Replication of Figure 1 of the main text with the yellow dots representing the outliers exclude from the statistical analysis



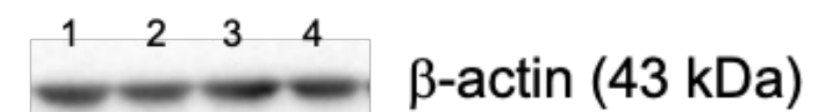
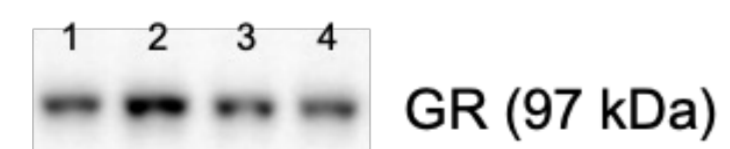
Supplementary figure S1

Supplementary figure S2. Replication of Figure 2 of the main text with the yellow dots representing the outliers exclude from the statistical analysis

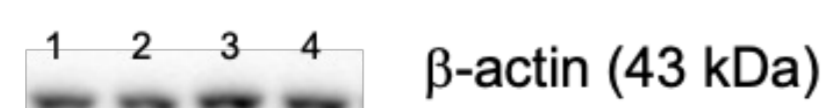
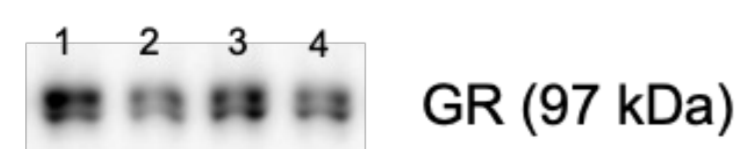


msP rats

Nuclear fraction

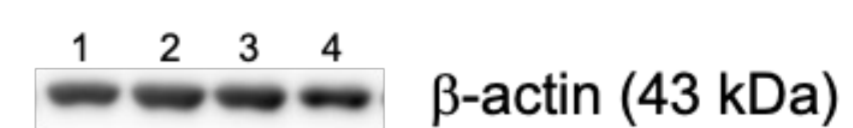


Cytosolic fraction

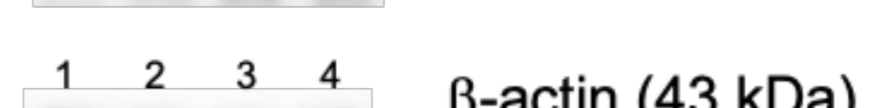
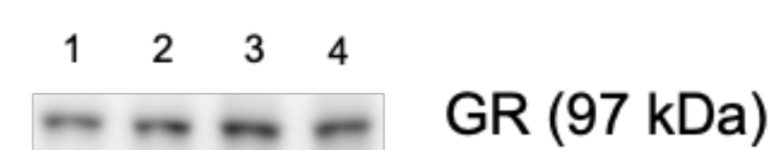


Wistar rats

Nuclear fraction

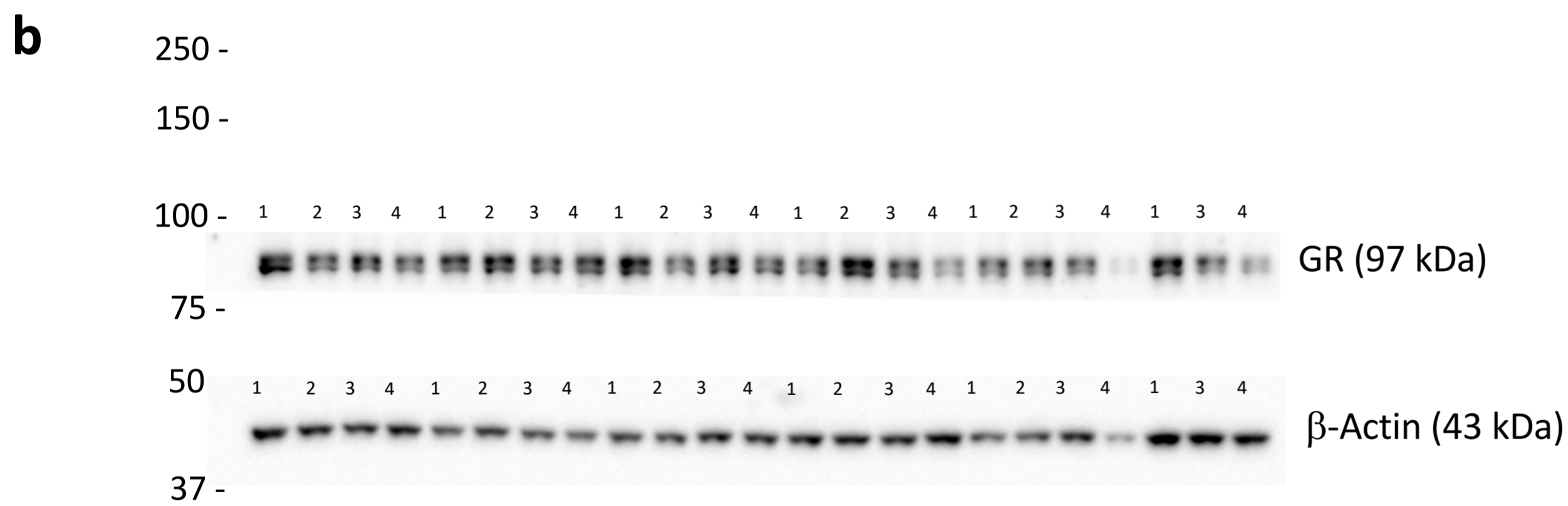
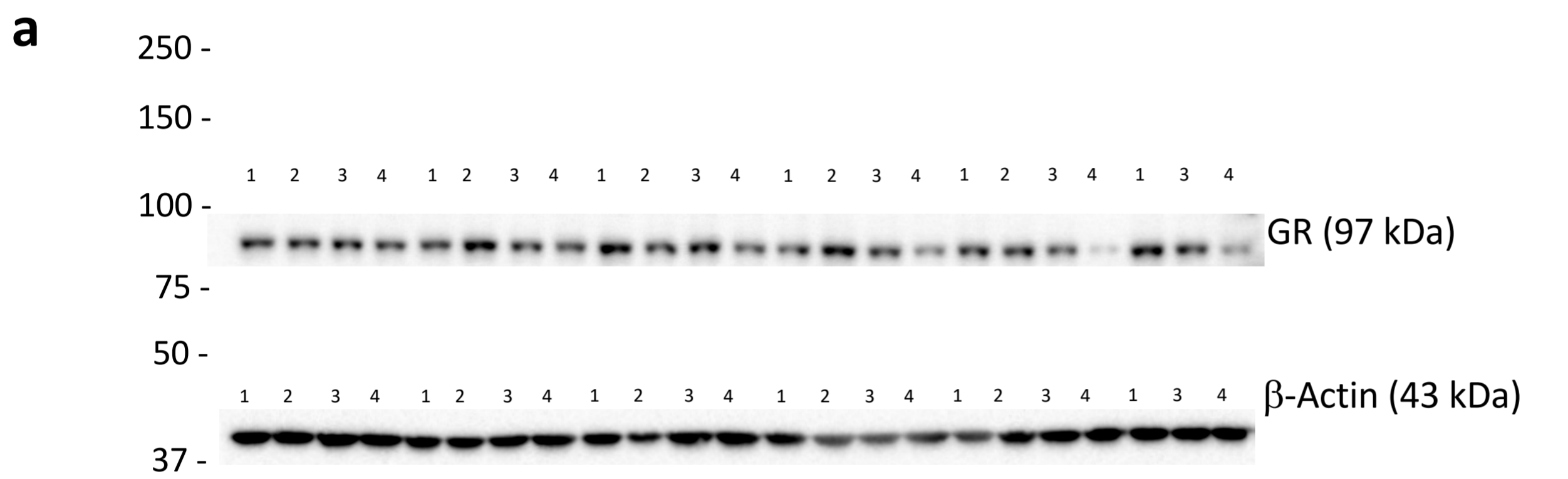


Cytosolic fraction



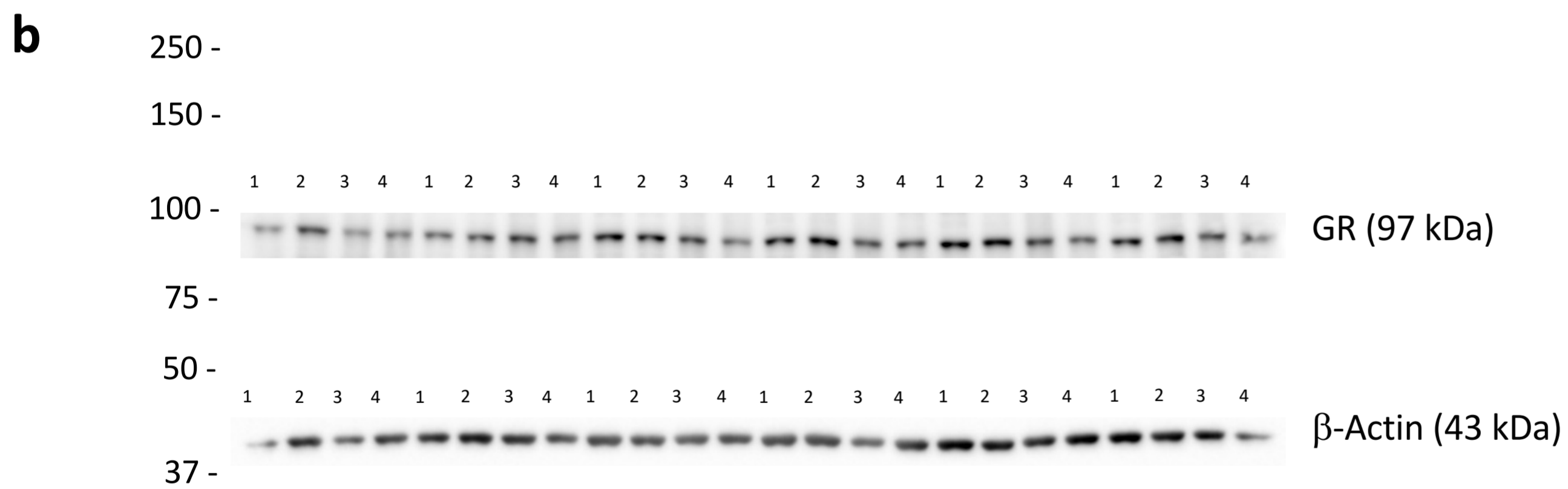
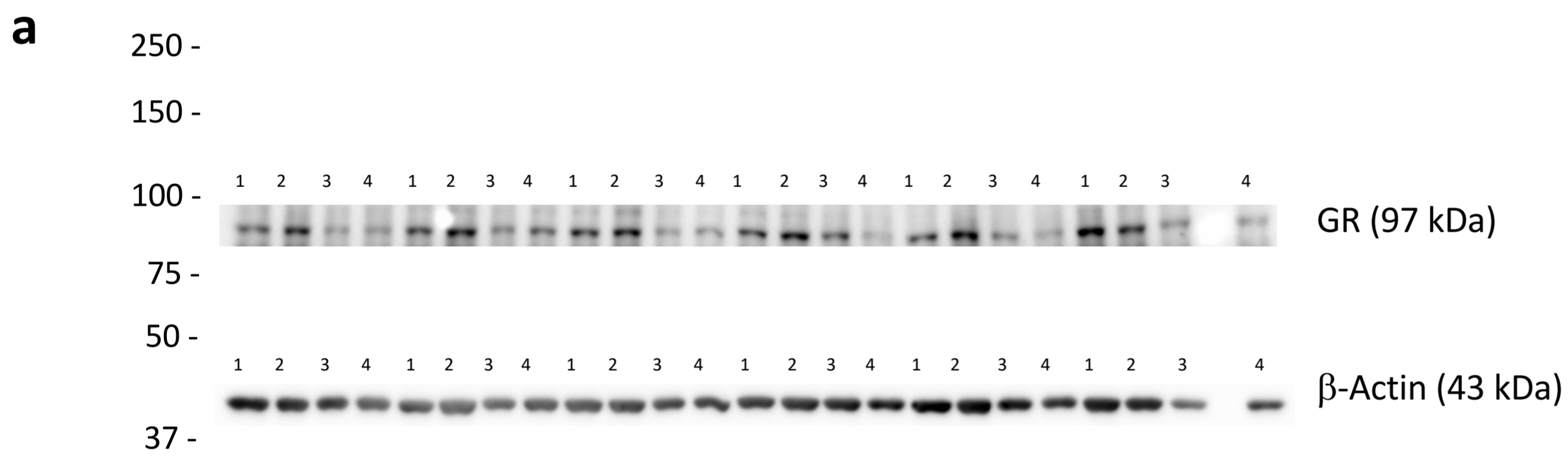
Supplementary figure S3. Example of full-size cropped immunoblots related to the protein expression levels of GR and β -actin measured in the nuclear (**a**) and in the cytosolic fraction (**b**) of the mPFC of control (CTRL) and early social isolated (ESI) male and female msP rats.

1= CTRL male (n=6)
2= ESI male (n=5)
3= CTRL female (n=6)
4= ESI female (n=6)



Supplementary figure S4. Example of full-size cropped immunoblots related to the protein expression levels of GR and β -actin measured in the nuclear (**a**) and in the cytosolic fraction (**b**) of the mPFC of control (CTRL) and early social isolated (ESI) male and female Wistar rats.

1= CTRL male (n=6)
2= ESI male (n=6)
3= CTRL female (n=6)
4= ESI female (n=6)



Supplementary figure S5. Replication of Figure 3 of the main text with the yellow dots representing the outliers exclude from the statistical analysis

