

**Resampling epiphytic lichens in coniferous forests of the Southern Alps:  
veteran trees promote compositional stability**

Juri Nascimbene<sup>1</sup>, Michele Di Musciano<sup>2,1</sup>, Gabriele Gheza<sup>1\*</sup>

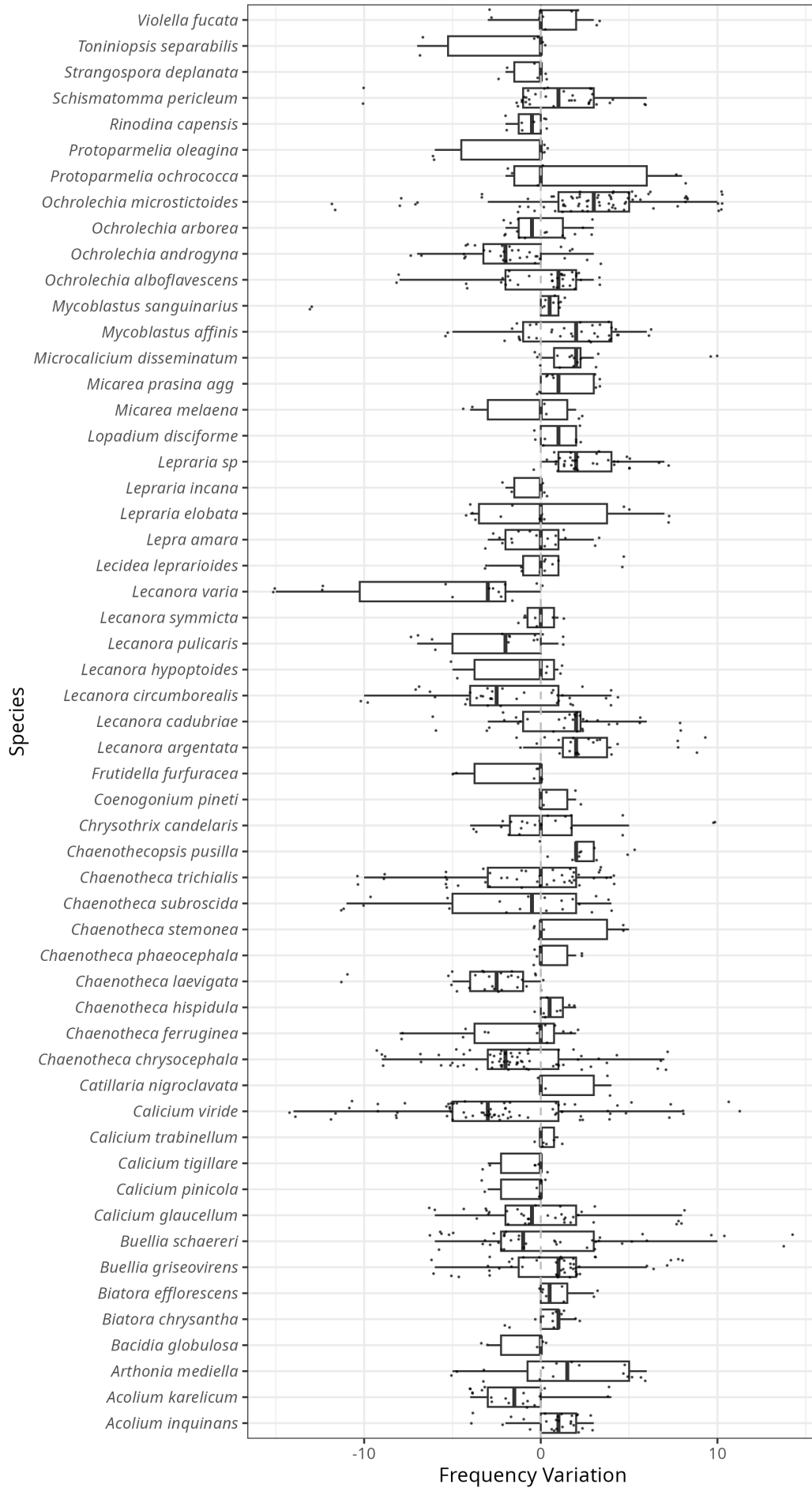
<sup>1</sup> BIOME Lab, Department of Biological, Geological and Environmental Sciences, Alma Mater Studiorum – University of Bologna

<sup>2</sup> Department of Life, Health & Environmental Science, University of L'Aquila, L'Aquila, Italy

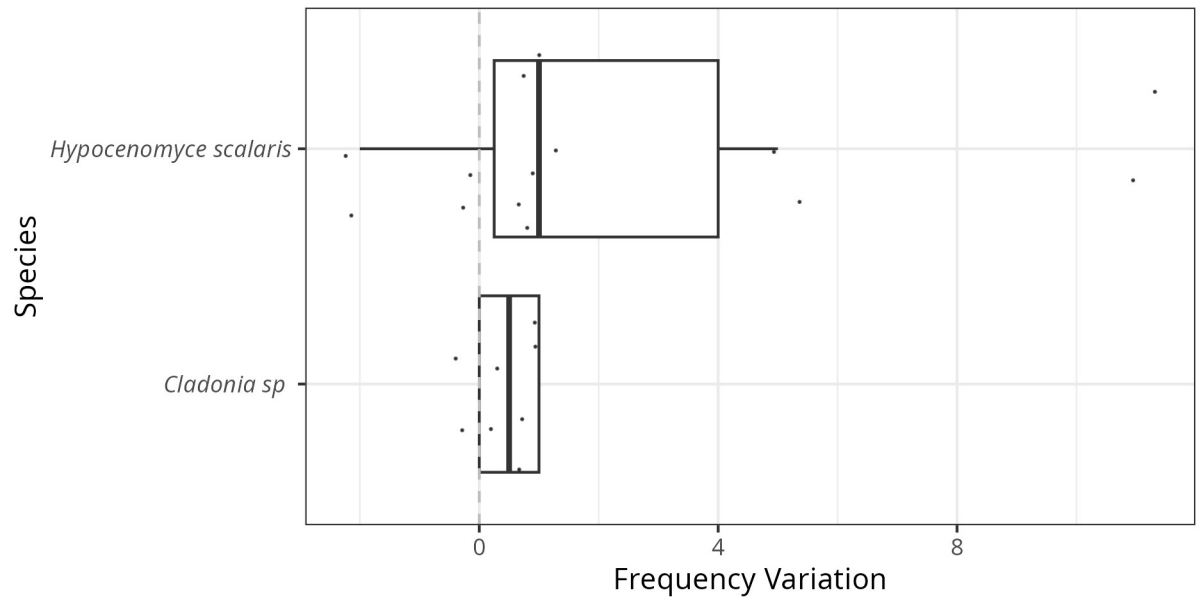
**SUPPLEMENTARY FILE 2**

Frequency variation of epiphytic lichen species between the first sampling and the resampling.

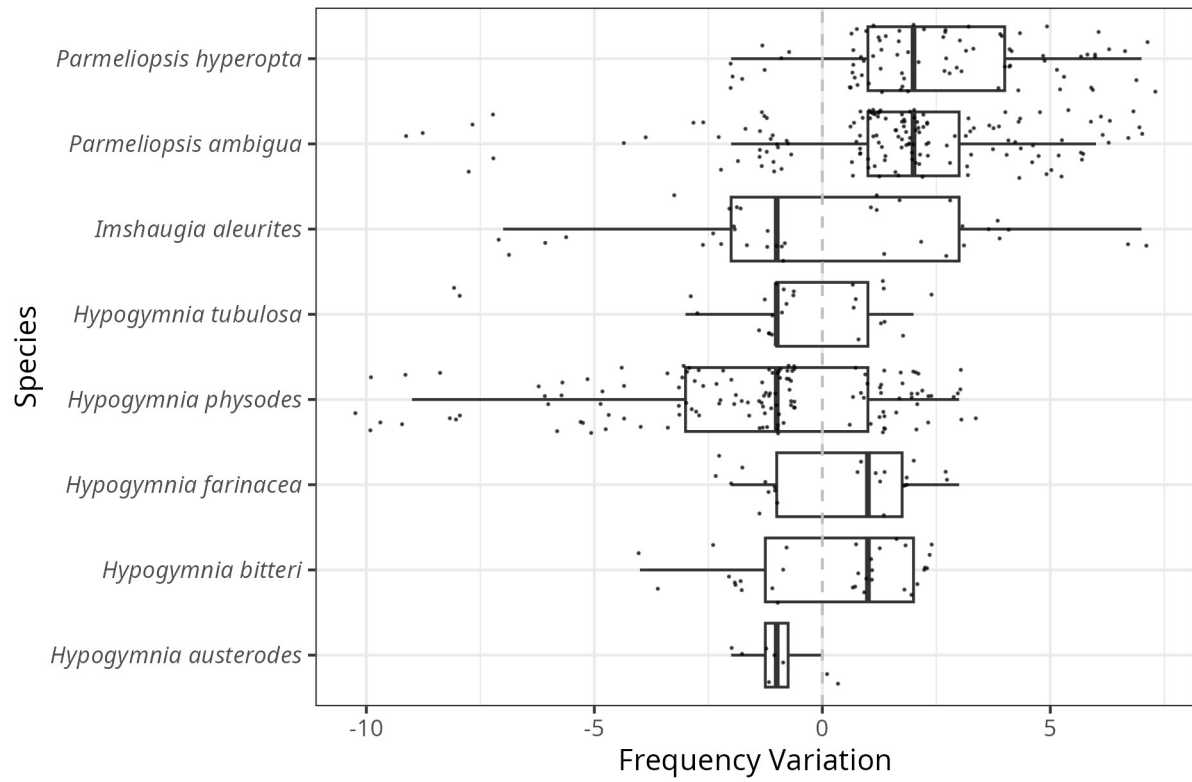
## Crustose



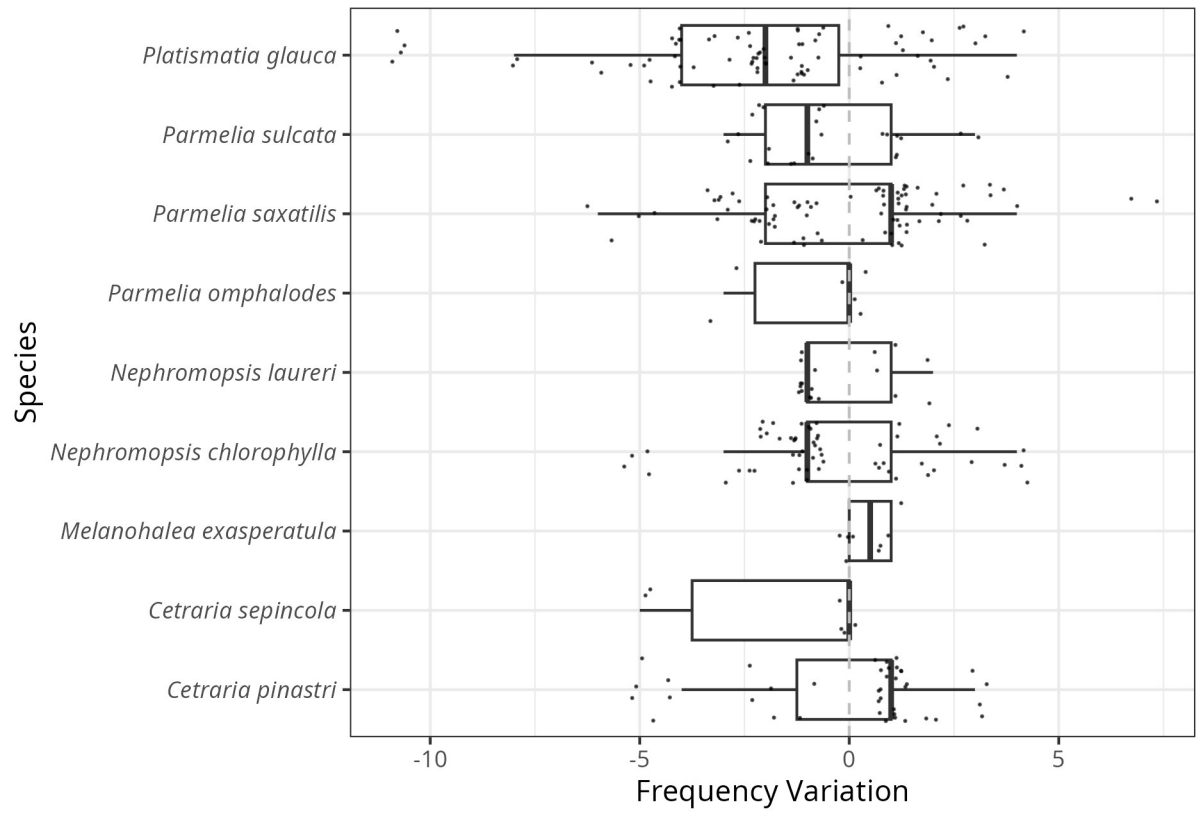
## Squamulose



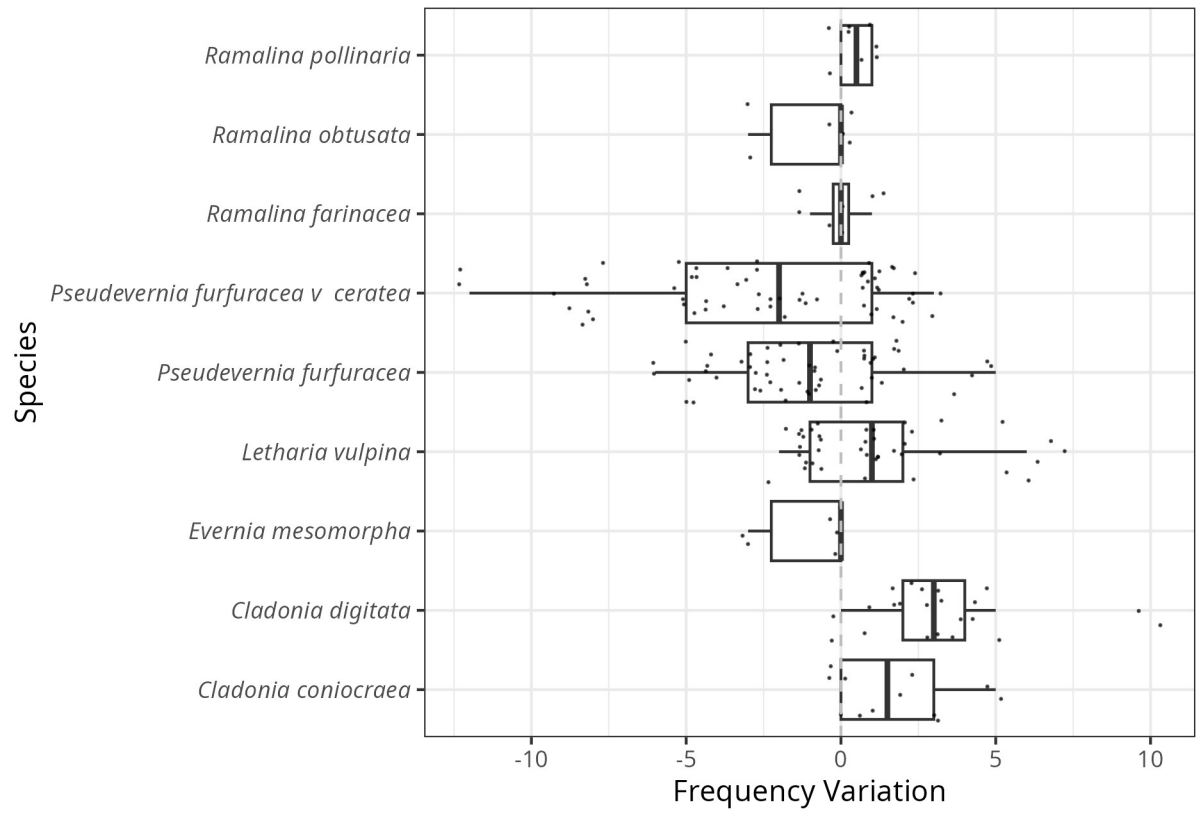
## Foliose narrow-lobed



## Foliose broad-lobed



# Fruticose (non alectorioid)



## Fruticose (alectorioid)

