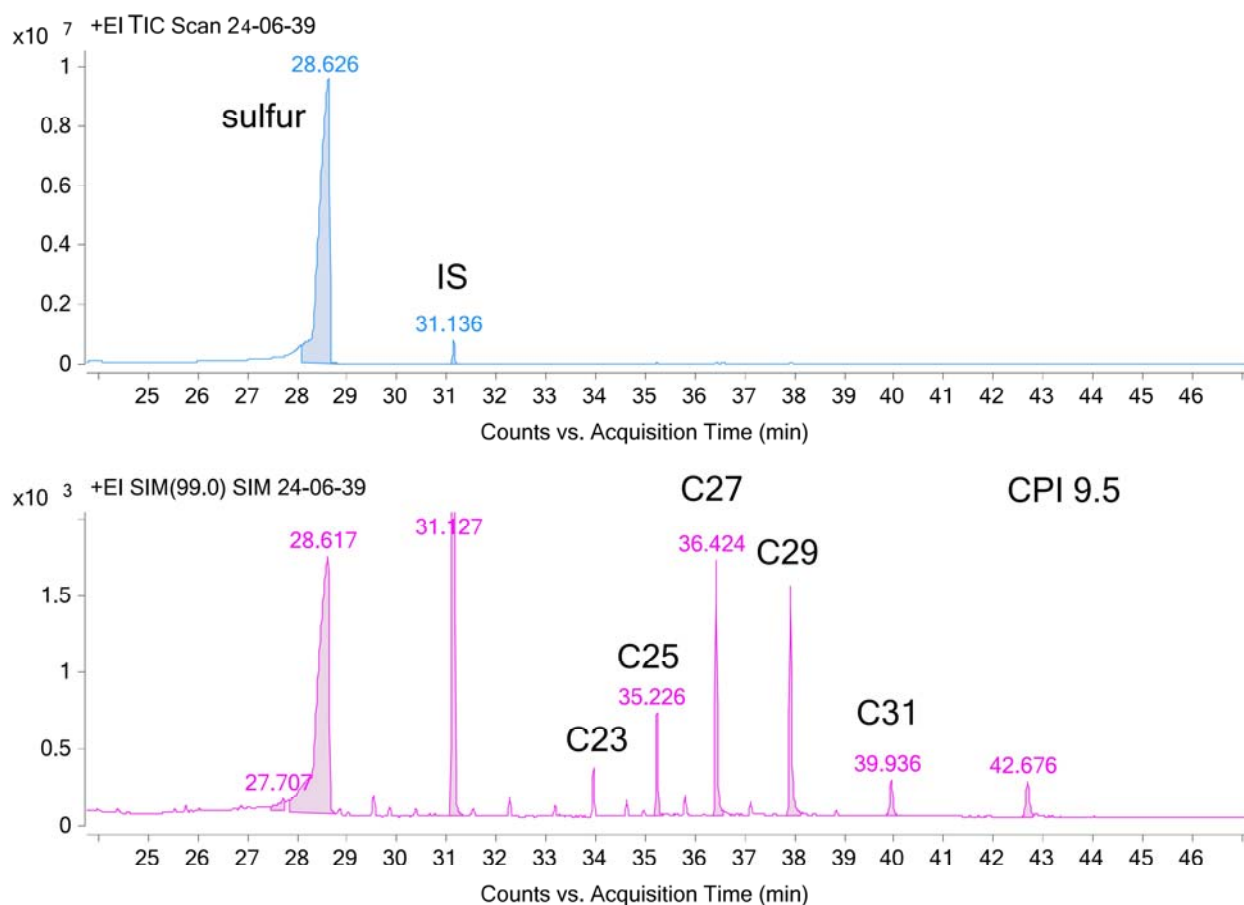


# SEISMICALLY TRIGGERED ANOXIA AND BRINE SPILLOVER DURING THE CE 365 CRETE MEGA-EARTHQUAKE IN THE EASTERN MEDITERRANEAN SEA

## SM2

## BIOMARKERS



Results of biomarker analyses in Unit E (sample KR2\_2 IVE at 4,5 cm depth from core top). a) Above: Total ion current (TIC) and b) Below: Selective ion monitoring. In the TIC is prominent a sulphur peak confirming the reducing environment. In the SIM mode, the mass 99 show the predominance of odd n-alkanes of terrestrial plant origin (i.e. biospheric) that rules out the influence of oil-like material in the E unit. IS= internal standard, CPI= Carbon Preference Index