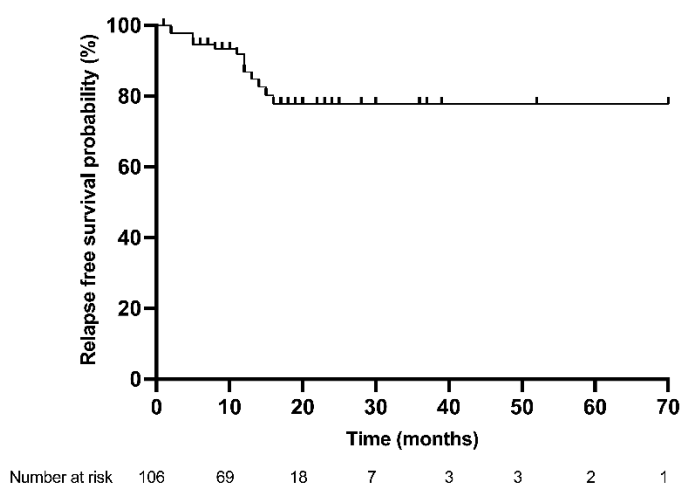


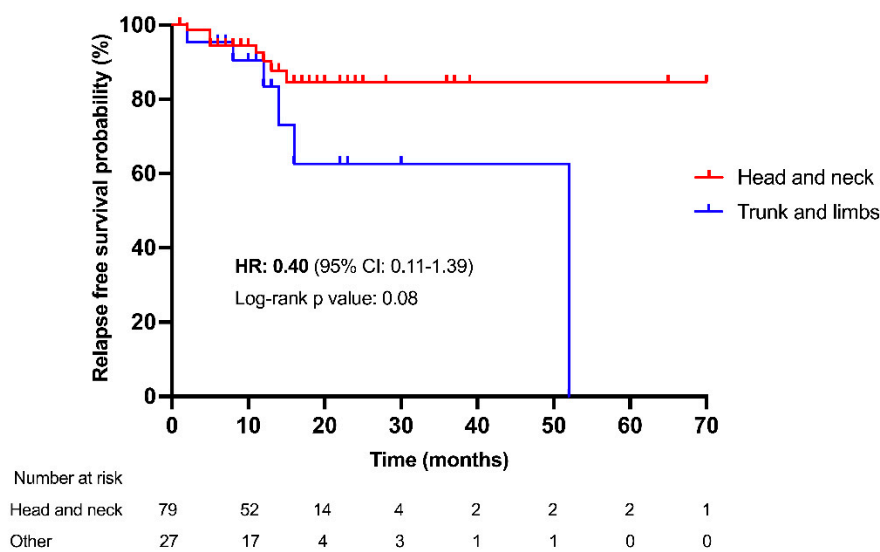
Supplementary Figures and Tables

Supplementary Figures

Supplementary Figure S1. Relapse-free-survival probability of the overall cohort



Supplementary Figure S2. Relapse-free-survival probability of patients grouped according to tumor site



Supplementary Tables

Supplementary Table S1. summary of studies investigating advanced BCC relapse after CR on HHI

Study reference	Study design	Number of patients	Median FUP	Median RFS/DFS
Hermes F. et al. [13]	Multicenter, observational, retrospective LaBCC with CR on vismodegib who discontinued treatment	116	34.9 months	RFS: 18.4 months (95% CI: 13.5-24.8 months)
Bassompierre A. et al. [14]	Multicenter, observational, retrospective LaBCC and mBCC with CR on vismodegib who discontinued treatment	110	21 months	RFS: 24 months (IQR: 13.0-38.0 months)
Alfieri S. et al. [15]	Multicenter, observational, retrospective LaBCC with CR on vismodegib who discontinued or continued treatment beyond CR	68 61/68 stopped vismodegib 7/68 continued vismodegib	42.5 months	Vismodegib discontinuation, DFS: 365.0 days (range: 0-2600 days) Vismodegib beyond CR, DFS: 1261.0 days (range: 182-1955 days)
Scalvenzi M. et al. [16]	Single center, observational, retrospective LaBCC with CR on vismodegib who discontinued or continued treatment ("low-dose") beyond CR	42 15/42 stopped vismodegib 27/42 continued vismodegib	NA	NA

Abbreviations: CI, confidence interval; CR, complete response; DFS, disease free survival; FUP, follow-up; IQR, interquartile range; LaBCC, locally advanced basal cell carcinoma; mBCC, metastatic basal cell carcinoma; NA, not available; RFS, relapse free survival