

New Developments in Myeloma Treatment and Response Assessment

Françoise Kraeber-Bodéré¹, Bastien Jamet², Davide Bezzi³, Elena Zamagni^{4,5}, Philippe Moreau⁶, and Cristina Nanni⁷

¹Médecine nucléaire, CHU Nantes, Nantes Université, Université Angers, INSERM, CNRS, CRCI2NA, F-44000, Nantes, France;

²Médecine nucléaire, CHU Nantes, F-44000, Nantes, France; ³Department of Nuclear Medicine, Alma Mater Studiorum, University of Bologna, Bologna, Italy; ⁴IRCCS Azienda Ospedaliero-Universitaria di Bologna, Istituto di Ematologia "Seràgnoli," Bologna, Italy;

⁵Dipartimento di Scienze Mediche e Chirurgiche, Università di Bologna, Bologna, Italy; ⁶Hématologie, CHU Nantes, Nantes Université, Université Angers, INSERM, CNRS, CRCI2NA, F-44000, Nantes, France; and ⁷Nuclear Medicine, IRCCS Azienda Ospedaliero-Universitaria di Bologna, Bologna, Italy

Learning Objectives: On successful completion of this activity, participants should be able to describe (1) important news in multiple myeloma treatment; (2) the prognostic value of FDG PET/CT in different disease stages; and (3) the added value of non-FDG tracer imaging, radiomics, and whole-body functional MRI.

Financial Disclosure: This work has been supported in part by grants from the French National Agency for Research "France 2030 investment plan" Labex IRON (ANR-11-LABX-18-01), Equipex ArronaxPlus (ANR-11-EQPX-0004), and I-SITE NEXt (ANR-16-IDEX-0007) and by a grant from INCa-DGOS-INSERM_12558 (SIRIC ILIAD). Dr. Moreau has received honoraria from or is on the advisory boards for Janssen, Celgene, Sanofi, Abbvie, Takeda, Amgen, and GSK. Dr. Nanni is a consultant for Sanofi-Aventis, a case revisor for Keosys, and on the advisory board for the EANM Oncology Theranostic Committee and the AIMN Oncology Committee. Dr. Kraeber-Bodéré is a consultant for PentixaPharm and Novartis-AAA, a case revisor for Keosys, and a member of the EANM Oncology Theranostic Committee. The authors of this article have indicated no other relevant relationships that could be perceived as a real or apparent conflict of interest.

CME Credit: SNMMI is accredited by the Accreditation Council for Continuing Medical Education (ACCME) to sponsor continuing education for physicians. SNMMI designates each *JNM* continuing education article for a maximum of 2.0 AMA PRA Category 1 Credits. Physicians should claim only credit commensurate with the extent of their participation in the activity. For CE credit, SAM, and other credit types, participants can access this activity through the SNMMI website (<http://www.snmmilearningcenter.org>) through September 2026.

Recent innovative strategies have dramatically redefined the therapeutic landscape for treating multiple myeloma patients. In particular, the development and application of immunotherapy and high-dose therapy have demonstrated high response rates and have prolonged remission duration. Over the past decade, new morphologic or hybrid imaging techniques have gradually replaced conventional skeletal surveys. PET/CT using ¹⁸F-FDG is a powerful imaging tool for the workup at diagnosis and for therapeutic evaluation allowing medullary and extramedullary assessment. The independent negative prognostic value for progression-free and overall survival derived from baseline PET-derived parameters such as the presence of extramedullary disease or paramedullary disease, as well as the number of focal bone lesions and SUV_{max}, has been reported in several large prospective studies. During therapeutic evaluation, ¹⁸F-FDG PET/CT is considered the reference imaging technique because it can be performed much earlier than MRI, which lacks specificity. Persistence of significant abnormal ¹⁸F-FDG uptake after therapy is an independent negative prognostic factor, and ¹⁸F-FDG PET/CT and medullary flow cytometry are complementary tools for detecting minimal residual disease before maintenance therapy. The definition of a PET metabolic complete response has recently been standardized and the interpretation criteria harmonized. The development of advanced PET analysis and radiomics using machine learning, as well as hybrid imaging with PET/MRI, offers new perspectives for multiple myeloma imaging. Most recently, innovative radiopharmaceuticals such as C-X-C chemokine receptor type 4-targeted small molecules and anti-CD38

radiolabeled antibodies have shown promising results for tumor phenotype imaging and as potential theranostics.

Key Words: multiple myeloma; ¹⁸F-FDG PET/CT; MRI; radiomics; ⁶⁸Ga-pentixafor; therapeutic evaluation

J Nucl Med 2023; 64:1331–1343

DOI: 10.2967/jnumed.122.264972

Multiple myeloma (MM) is a hematologic neoplasm characterized by the clonal proliferation of malignant plasma cells in the bone marrow. It is almost always preceded by an initial monoclonal gammopathy of undetermined significance, which then develops into asymptomatic, or smoldering, MM, which constitutes an intermediate clinical stage between monoclonal gammopathy of undetermined significance and MM. The definition of symptomatic MM, a clinical stage requiring treatment, was traditionally based on the presence of organ damage related to plasma cell growth as defined by the CRAB criteria (calcium elevation, renal insufficiency, anemia, and bone lesions). This definition was revised in 2014 by the International Myeloma Working Group, integrating new prognostic biomarkers with the aim of not delaying treatment of high-risk smoldering-MM-classified patients and avoiding establishment of harmful bone lesions or renal impairment (*1*). New biomarkers have therefore been defined that are associated with an 80% probability of progression toward positive MM CRAB criteria within 2 y, making it possible to identify patients requiring therapy; these biomarkers are a clonal bone marrow plasma cell percentage of at least 60%, an involved or uninvolved serum free light chain ratio of at least 100, and more than one bone focal lesion (FL) on MRI assessment.

Given that the presence of even an asymptomatic bone lesion must be considered a treatment criterion, the role of imaging has

Received Feb. 16, 2023; revision accepted Jul. 6, 2023.

For correspondence or reprints, contact Cristina Nanni (cristina.nanni@aosp.bo.it).

Published online Aug. 17, 2023.

Immediate Open Access: Creative Commons Attribution 4.0 International License (CC BY) allows users to share and adapt with attribution, excluding materials credited to previous publications. License: <https://creativecommons.org/licenses/by/4.0/>. Details: <http://jnm.snmmilearningcenter.org/site/misc/permission.xhtml>

COPYRIGHT © 2023 by the Society of Nuclear Medicine and Molecular Imaging.

increased during the last few decades and modern morphologic or hybrid imaging techniques have replaced the conventional skeletal survey (2,3). It is now recommended that whole-body CT be performed as dedicated CT, or as part of PET/CT using ^{18}F -FDG, when symptomatic MM diagnosis is first diagnosed and there are one or more osteolytic lesions (defining the “B” of the CRAB criteria) (4,5). Moreover, MRI detects bone abnormalities in more than 90% of patients presenting with symptomatic MM and appears to be the best procedure for evaluating painful lesions and detecting medullary compression (4). However, during the therapeutic follow-up, the performance of whole-body CT and MRI is less satisfactory because of the high frequency of false-positive images, whereas ^{18}F -FDG PET appears to be more effective (4).

By detecting tumor cells or a tumor environment with high glucose consumption, ^{18}F -FDG PET/CT provides additional prognostic information. MM diagnosis is associated with variable survival—short for some patients but over 10 y for others (5). These differences in survival are explained by intra- and intertumoral heterogeneity and demonstrate the potential benefits of adapting the treatment course for high-risk patients. The past decade has seen considerable advances in developing risk classifiers based on cytogenetics and gene expression profiling (6), but spatial heterogeneity can limit the sensitivity of these tests because they are based on cells obtained from a single bone marrow biopsy. Several ^{18}F -FDG PET/CT characteristics could be defined as possible high-risk biomarkers and could be used to define high-risk patients at the initial diagnosis of symptomatic MM (7). ^{18}F -FDG PET/CT is equally beneficial for patients with solitary plasmacytoma to detect medullary and extramedullary lesions (8,9) and has a prognostic value for patients with smoldering MM (10,11).

Other radiopharmaceuticals targeting alternative MM biomarkers have also shown promising results. These include radiolabeled choline, ^{68}Ga -pentixafor targeting C-X-C chemokine receptor type 4 (CXCR4), and immuno-PET using radiolabeled monoclonal antibodies as a companion to antibody-based therapies (12). Advanced PET analysis and radiomics using machine learning and PET/MRI also appear to be promising new approaches. The goal of this review is to present new developments in MM treatment and response assessment, with a specific focus on nuclear medicine techniques.

NEW THERAPEUTIC DEVELOPMENT

The treatment of MM has changed dramatically in the past decade with the incorporation of novel agents into therapeutic strategies. These new drugs, in various combinations, have been added to national and international clinical guidelines and have transformed our approach to the treatment of patients with MM, resulting in a significant improvement in overall survival (13,14).

With the availability of many different classes of approved agents, including alkylators, steroids, proteasome inhibitors, immunomodulatory agents, histone deacetylase inhibitors, monoclonal antibodies, and selective inhibitors of nuclear export that can be combined in double, triple, or even quadruple regimens and can be used together with or without high-dose therapy and autologous stem cell transplantation (ASCT), or in some cases as continuous treatment, the choice of the optimal strategy at diagnosis and at relapse represents a challenge for physicians (15). Moreover, contemporary next-generation immunotherapies including antibody–drug conjugates, CAR T cells, and bispecific antibodies have been approved for patients failing proteasome inhibitors, immunomodulatory agents, and CD38 monoclonal antibodies (16,17).

Frontline Therapy

For fit patients up to the age of 70 y without comorbidities, induction followed by ASCT is the recommended treatment because of an improved progression-free survival (PFS) (13,14,18–21). Recently, monoclonal antibodies have been introduced in the frontline setting (22,23) as the quadruplet bortezomib, thalidomide, dexamethasone, and daratumumab (now approved by the U.S. Food and Drug Administration and the European Medicines Agency) and the quadruplet bortezomib, lenalidomide, dexamethasone, and isatuximab, both of which improve the rate of minimal residual disease (MRD) negativity (24). Quadruplet combinations before ASCT are now becoming a new standard of care. For all patients after ASCT, maintenance with lenalidomide is also considered the standard of care (25). The optimal duration of lenalidomide maintenance, approved until progression, is a matter of debate, and recent data indicate that this therapy should be proposed for at least 3 y according to tolerability (21,26,27).

For transplant-ineligible patients, outstanding outcomes have been reported when daratumumab was combined with lenalidomide and dexamethasone (28,29). This regimen is the most effective one and is approved by the U.S. Food and Drug Administration and the European Medicines Agency. Other regimens can be used as frontline therapy for transplant-ineligible patients, such as a combination of bortezomib, lenalidomide, and dexamethasone followed by lenalidomide and dexamethasone alone until progression (30,31). The quadruplet combination daratumumab plus bortezomib, melphalan, and prednisone is also approved and is associated with both PFS and overall survival benefits versus bortezomib, melphalan, and prednisone alone (32,33). Bortezomib, melphalan, and prednisone alone or lenalidomide and dexamethasone alone may be considered for patients who cannot receive the fuller regimens because of frailty (34).

Treatment of Patients with Relapsed or Refractory MM Disease Who Have Received One Prior Line of Therapy

Overall, the most important question in most cases is whether a patient is refractory to lenalidomide. A second scenario, which will become increasingly important, is whether the patient is progressing on frontline therapies that include daratumumab (15,35–38). For a patient progressing on lenalidomide as part of frontline therapy, one reasonable approach is a switch in the class of agent from an immunomodulatory agent to a proteasome inhibitor. The combination of carfilzomib–dexamethasone plus anti-CD38 antibodies has recently been evaluated (39,40), with a significant improvement in PFS. On the basis of PFS data and hazard ratios, daratumumab–carfilzomib–dexamethasone and isatuximab–carfilzomib–dexamethasone, which are approved, are considered important options for the first relapse in patients with lenalidomide-refractory disease (13,15). The third best option for lenalidomide-refractory patients is the combination of pomalidomide, bortezomib, and dexamethasone (41). A significant improvement in PFS was observed with pomalidomide, bortezomib, and dexamethasone, but particularly interesting were the results in patients who had received a single previous line of treatment and were refractory to lenalidomide (42).

The most effective combination available to date in the setting of a first relapse nonrefractory to lenalidomide is daratumumab combined with lenalidomide and dexamethasone (38,43), leading to a prolonged PFS and overall survival (45.8 and 67.6 mo, respectively). Several second options for first-relapse patients with disease not refractory to lenalidomide could be proposed according to

international guidelines, such as carfilzomib–dexamethasone or daratumumab plus carfilzomib–dexamethasone (13,15).

Treatment of Patients with Relapsed or Refractory MM Who Have Received Two or More Prior Lines of Therapy

The treatment of patients who have received two or more prior lines of therapy is becoming particularly challenging. Lenalidomide and bortezomib are commonly used as part of frontline therapy or at the first relapse. Monoclonal antibodies and carfilzomib are also being increasingly used during the first 2 lines of treatment. Therefore, at the time of the second relapse, all the agents considered previously for the first relapse, but not used, can be considered (13,15,44). Some combinations approved by the U.S. Food and Drug Administration and the European Medicines Agency in this setting are isatuximab plus pomalidomide–dexamethasone (45) and daratumumab plus pomalidomide–dexamethasone

Treatment of Triple-Class–Refractory Patients

For patients whose disease has become refractory to proteasome inhibitors, immunomodulatory agents, and anti-CD38 antibodies, the outcome is poor. Recent studies revealed that these patients have a median overall survival ranging from 6 to 12 mo (46,47). Selinexor has been evaluated in combination with dexamethasone (48) and has led to a partial response or better in 26% of patients. Consequently, in July 2019, the U.S. Food and Drug Administration granted accelerated approval to selinexor for the treatment of this subgroup of patients.

B-cell maturation antigen promotes MM pathogenesis in the bone marrow microenvironment and is a specific MM target antigen. Belantamab mafodotin is an anti-B-cell maturation antigen antibody–drug conjugate auristatin immunotoxin (49) that has achieved an overall response rate of approximately 30%–35%. Belantamab mafodotin has recently been approved by the U.S. Food and Drug Administration and the European Medicines Agency as a monotherapy for patients with relapsed or refractory MM who have received at least 4 prior therapies including an anti-CD38 monoclonal antibody, a proteasome inhibitor, and an immunomodulatory agent.

B-cell maturation antigen is also the target for 2 CAR T-cell constructs—idecabtagene vicleucel and ciltacabtagene autoleucel—that were approved in 2021 and 2022, respectively (50). These are associated with a median PFS of 8.6 mo and a median overall survival of 24.8 mo. Ciltacabtagene autoleucel has also been evaluated (51), with an overall response rate of 97.9% and 27-mo PFS and overall survival rates of 54.9% and 70.4%, respectively (52). Although the results of CAR T-cell therapies are outstanding, one important challenge is the expensive and lengthy (6–8 wk) individualized manufacturing process, which might not be feasible for patients with aggressive disease. In 2023, the access to CAR T-cell therapy remains limited. On the other hand, other immunotherapy modalities using bispecific antibodies are readily available as off-the-shelf products (16). Ongoing phase I/II clinical trials using different constructs of bispecific antibodies, with different targets on myeloma cells, are showing a favorable safety profile and high response rates in heavily pretreated patients. B-cell maturation antigen is currently the major target for bispecific antibodies, with at least 8 different compounds in preclinical or clinical development to date (53–55).

Overall, the most promising developments for triple-class–refractory patients include novel immunotherapeutic approaches, CAR T-cell therapy, and bispecific antibodies. Choosing between

the 2 modalities will depend on a variety of practical considerations: efficacy, disease status, age, comorbidities, product availability, and distance from a treatment center. Moreover, early data suggest that these agents can be used sequentially and that the optimal sequencing could be CAR T cells before bispecific antibodies (56). Finally, CAR T cells and bispecific antibodies might be easily used as earlier lines of treatment to increase efficacy, and ongoing trials are already comparing these agents versus the standard of care in patients with 1–3 prior lines of therapy.

EVALUATION OF THERAPY EFFICACY: MRD AND MODERN IMAGING

New treatment options have improved responses up to the minimum detectable level (57). Serum marker assessment and bone marrow examinations classify responders into subcategories of complete response, near-complete response, very good partial response, or partial response. However, despite an initial good clinical response, most patients relapse because of persistent disease that somehow cannot be intercepted with the standard methods.

Detection of MRD with sophisticated standardized methods at the bone marrow level, such as next-generation multiparametric flow cytometry or next-generation sequencing, with sensitivity thresholds of up to 10^{-5} – 10^{-6} , have become over time the most important predictors of long-term outcomes and survival. They are reliable and early biomarkers of treatment effectiveness and are currently extensively applied in prospective clinical trials, sometimes as early clinical endpoints (58). A large number of studies have consistently shown that among patients achieving a complete response, those with detectable MRD have an inferior PFS and overall survival compared with those with undetectable MRD, regardless of the presence of high-risk disease features (59–61). For this reason, the latest 2016 International Myeloma Working Group consensus has introduced new response criteria, with the addition of MRD in disease assessment (62).

MRD is usually assessed in the bone marrow by means of cellular (multiparametric flow cytometry) or molecular (next-generation sequencing) methods. However, bone marrow plasma cell infiltration is often patchy, thus increasing the likelihood of a false-negative assessment by techniques that rely on a bone marrow specimen, by nature limited to a small area of the body. In addition, bone marrow evaluation does not allow one to identify extramedullary escape as a sign of metastatic spreading of the disease (63). This phenomenon is increasingly being found, as a result of prolonged survival and widespread use of functional imaging techniques, and is associated with a dismal clinical outcome, even in the novel agent era. Nonetheless, bone marrow MRD might lead to false-negative results. Despite a low rate of recurrence, MRD-negative patients can still relapse (64). Besides the patchy infiltration of bone marrow plasma cells and the presence of extramedullary disease, recent prospective studies serially monitoring patients with functional imaging and FL biopsies demonstrated that MM entails spatial heterogeneity, with possible coexistence of different disease clones, or displaying different genomic profiles in the bone marrow and in FLs (6,65). The higher the FL size, the greater the heterogeneity (65).

For a long time, imaging in myeloma has been limited to assessment of bone disease at staging or restaging and has been based on the use of a skeletal survey. This tool is useless when evaluating response to therapy, because of the low sensitivity of the technique for the limited bone healing and for soft tissues and masses. Here, functional rather than morphologic whole-body imaging

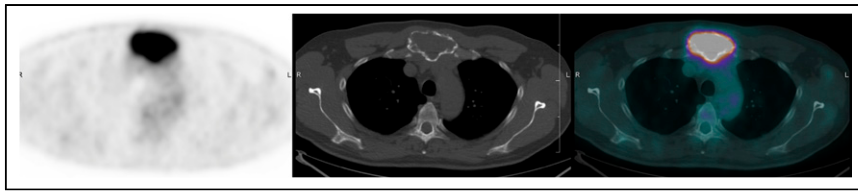


FIGURE 1. Axial PET (left), CT (middle), and PET/CT (right) images of focal osteolytic lesion with high ^{18}F -FDG avidity in sternal manubrium.

techniques, such as PET/CT and MRI, which provide a comprehensive overview of the tumor burden beyond osteolytic lesions and in addition show further prognostic markers such as extramedullary disease, are the favorite tools (66). Whole-body imaging provides important complementary information about residual disease after therapy and about early relapse. Extramedullary disease sites of clonal proliferating plasma cells in the context of bone marrow MRD negativity are more frequent in patients with extramedullary disease at diagnosis (5%–10%) or with paramedullary plasmacytomas and during the relapse phases of the disease (66).

For all these reasons, the International Myeloma Working Group supports the need to assess the whole extramedullary compartment through functional imaging and bone marrow using modern biologic diagnostic tools to ensure complete tumor eradication. Although bone marrow and imaging–MRD prognostic value has been assessed, their use for clinical decision-making remains unclear. Recently, a report suggested that bone marrow MRD–based decisions during maintenance therapy could be beneficial (67), and several randomized trials are currently testing MRD maintenance strategies (68). Fewer trials are adopting an imaging–MRD adapted approach. A panel of experts published recommendations aiming to improve MRD research quality worldwide and to standardize reports (69).

^{18}F -FDG PET/CT BEFORE THERAPY: DETECTION OF DISEASE AND PROGNOSTIC VALUE

^{18}F -FDG PET/CT Abnormalities and Accuracy in Symptomatic MM Patients

^{18}F -FDG PET/CT has a global sensitivity of 90% for the detection of medullary disease, with a specificity varying from 70% to 100% according to several studies (70–72). Medullary abnormalities detected by PET/CT are FLs (Fig. 1), paramedullary disease (Fig. 2), and diffuse bone marrow involvement (Fig. 3) with variable glucose uptake, resulting in a variable SUV_{max} (4,70–75). ^{18}F -FDG PET/CT also allows the detection of extramedullary disease (Fig. 4) in less than 10% of patients at initial diagnosis (76). Table 1 summarizes the elements that should be specified in ^{18}F -FDG PET/CT reporting. The IMPETUS criteria have been proposed to standardize the interpretation and improve interobserver reproducibility, using a visual scale (Deauville 5-level scale) in the description of the number of FLs, extramedullary disease, and diffuse bone marrow involvement (77).

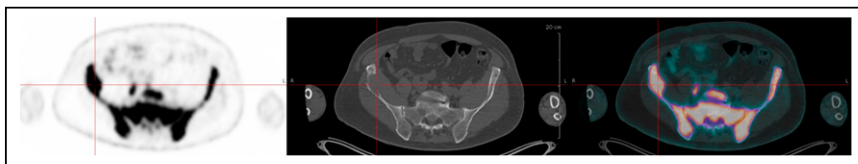


FIGURE 2. Axial PET (left), CT (middle), and PET/CT (right) images of osteolytic lesion with soft-tissue extension defining paramedullary disease in right iliac wing.

In symptomatic MM, the sensitivity of ^{18}F -FDG PET/CT to detect FL is greater than that of the conventional skeletal survey and comparable to or less than that of pelvic–spinal MRI (70,75,78–81). In the first small series of patients comparing ^{18}F -FDG PET/CT and MRI, the sensitivity of ^{18}F -FDG PET/CT was less than that of pelvic–spinal MRI for diffuse medullary involvement but allowed detection of additional FLs, especially outside the field of the MRI view (79). The French prospective IMAJEM study compared conventional pelvic–spinal MRI and ^{18}F -FDG PET/CT at initial diagnosis and after therapy (76). In this cohort of 134 symptomatic newly diagnosed MM patients, pelvic–spinal MRI was positive in 94.7% of cases and ^{18}F -FDG PET/CT in 91% of cases, revealing an equivalent detection sensitivity. Whole-body diffusion-weighted MRI, however, increases the sensitivity of MRI for FL detection, which seemed to be higher than that of ^{18}F -FDG PET/CT in recent comparative (82) and simultaneous PET/MRI (83) studies.

Of patients with newly diagnosed MM, 10%–20% were ^{18}F -FDG–negative, this phenomenon being associated with low expression of hexokinase-2 (84–86). These patients, however, have a better prognosis than those who have abnormal ^{18}F -FDG uptake (86,87) but are not monitored after therapy by ^{18}F -FDG PET/CT imaging. ^{18}F -FDG PET/CT also demonstrated benefit for patients with solitary plasmacytoma, allowing detection of additional lesions with better sensitivity and specificity than conventional MRI (8). In addition, the detection of at least 2 hypermetabolic FLs by ^{18}F -FDG PET/CT was reported as predictive of rapid progression of solitary plasmacytoma to symptomatic MM (9).

Prognostic Value of ^{18}F -FDG PET/CT in Baseline Evaluation of Symptomatic MM

All large, independent prospective studies conducted since 2009 have shown an independent negative prognostic impact of baseline PET-derived parameters on PFS and overall survival (88). Accordingly, a consensus statement by the International Myeloma Working Group (4) indicates that ^{18}F -FDG PET/CT performed at the onset of MM is a reliable tool for prediction of prognosis. The presence of more than 3 FLs and a FL SUV_{max} of more than 4.2 have been initially suggested (89,90) as stronger negative prognostic biomarkers. Since then, different prospective studies have shown that ^{18}F -FDG PET/CT normality at baseline was a protective prognostic factor (84–87). Among newly diagnosed MM patients with positive ^{18}F -FDG PET/CT results, those with extramedullary disease or paramedullary disease seem to have the worst prognosis according to large prospective comparisons (76,86,90). A recent study combined transcriptomic analyses using RNA sequencing with prognostic ^{18}F -FDG PET/CT biomarkers in 139 newly diagnosed MM patients included in the large prospective CASSIOPET study (85). The study confirmed that negative ^{18}F -FDG PET/CT results were associated

with lower expression of hexokinase-2 but also enriched for the low–bone-disease subgroup of patients. Moreover, positive ^{18}F -FDG PET/CT profiles displayed 2 distinct signatures: high expression of proliferation genes and high expression of *GLUT5* and lymphocyte antigens. Paramedullary disease and the IFM15 high-risk gene expression signature were independently associated with

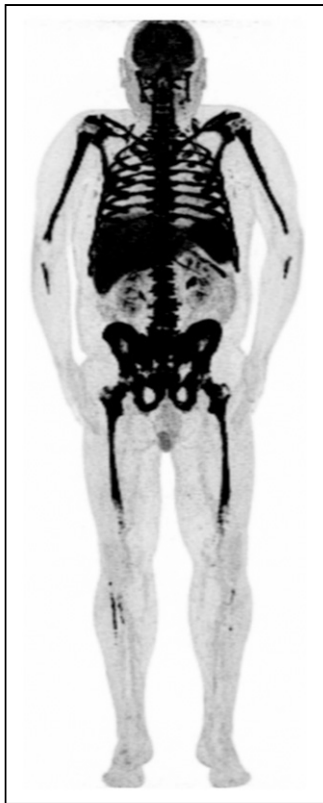


FIGURE 3. ^{18}F -FDG PET maximum-intensity projection showing diffuse bone marrow involvement.

a lower PFS, and the presence of both biomarkers defined a group of double-positive patients at a high risk of progression.

There may be scanner-specific variability in the measurement of SUV_{max} , since it is higher in reconstructions with a lower Q.Clear (GE Healthcare) cutoff and more subsets in iterative reconstruction. To reduce this phenomenon, it is suggested that the standard iterative reconstruction algorithm commonly used in clinical settings (2–5 iterations with 8–28 subsets) be applied for standardizing SUV measurement.

Nevertheless, none of the studies that focused on the prognostic value of PET-derived features at baseline considered tumor heterogeneity, which could be of significant importance in MM. Recently, 2 prospective independent European randomized phase III trials (90,91) evaluated the prognostic value of baseline PET-derived features (including metabolic tumor

volumes and textural features) using an innovative statistical random-survival-forest approach. These showed bone SUV_{max} as the worst negative prognostic biomarker before textural features. Volume-derived metabolic parameters such as metabolic tumor volume, total lesion glycolysis, total metabolic tumor volume, and whole-body total lesion glycolysis had less prognostic importance than others in this cohort—a finding that is discordant with previous results published by different groups. In a large cohort of patients enrolled in Total Therapy 3A, the team at Little Rock showed that whole-body total lesion glycolysis of more than 620 g and total metabolic tumor volume of more than 210 cm^3 at baseline were independent prognostic factors for PFS and overall survival (92), but the segmentation method of bone disease used in this study is questionable. Another team's (93) retrospective study including 185 patients with newly diagnosed MM showed that high baseline total metabolic tumor volume ($>56\text{ cm}^3$) and whole-body total lesion glycolysis ($>166\text{ g}$) values independently predicted both worse PFS and worse overall survival, but the patients' age was not homogeneous. Further investigations exploring the potential

prognostic value of textural features in MM using artificial intelligence-based statistical approaches need to be performed.

Prognostic Value of ^{18}F -FDG PET/CT in Smoldering MM and Monoclonal Gammopathy of Undetermined Significance

^{18}F -FDG PET/CT imaging has also proven useful in the setting of smoldering MM, showing prognostic value even though the latest update of the diagnostic criteria of the MM International Myeloma Working Group (1) indicate that, to consider an FL on ^{18}F -FDG PET/CT as a criterion for starting therapy, osteolysis on CT is mandatory. In a first cohort of 122 smoldering-MM patients assessed by ^{18}F -FDG PET/CT, the probability of progression to symptomatic MM without therapy within 2 y for patients with positive ^{18}F -FDG PET/CT results (with or without osteolysis) was 75%, versus 30% for patients with negative PET results (10). Another prospective study of 120 patients (11) showed a similar rate of progression of smoldering MM to symptomatic MM at 2 y for 58% of patients with positive PET results (all without evidence of underlying osteolysis), versus 33% for patients with negative PET results. These ^{18}F -FDG PET/CT results were published after the latest update of the International Myeloma Working Group's MM definitions (1) and thus are not yet considered as a myeloma-defining event leading to the recommendation to treat these patients. Whole-body MRI is therefore the preferred imaging modality for workup of smoldering MM as recommended by the International Myeloma Working Group (94).

According to updated data on the Southeastern Minnesota cohort (with a long-term follow-up), there are adverse risk factors for progression of monoclonal gammopathy of undetermined significance to active MM, including an M-protein of 15 g/L or more and an abnormal free light chain ratio in patients with non-IgM monoclonal gammopathy of undetermined significance. Patients with 2 risk factors showed a significantly higher progression rate to MM (30% over 20 y) than did patients with no risk factors (7%) or 1 risk factor (20%) (95). Therefore, there is probably a need to image patients with a high risk for progression of monoclonal gammopathy of undetermined significance, but to date, prospective data concerning the diagnostic performance of modern functional imaging in this setting are lacking, and more specifically, there are no published data about the potential role of ^{18}F -FDG PET/CT.

Prognostic Value of ^{18}F -FDG PET/CT in Patients with Relapsed or Refractory MM

^{18}F -FDG PET/CT imaging is a reliable tool to detect symptomatic or paucisymptomatic bone or extramedullary MM relapse. ^{18}F -FDG PET/CT discerns active from nonactive osteolytic lesions, and the targets' SUVs are usually much higher in relapsed or refractory MM than in newly diagnosed MM. The prognostic value of ^{18}F -FDG PET/CT-derived biomarkers has been highlighted several times. An absence of ^{18}F -FDG-avid foci was a prognostic factor associated with a longer time to relapse and overall survival (96). The presence of more than 10 FLs also correlated with a shorter time to relapse and survival in this study. Another study reported that the presence of at least 6 FLs in the peripheral skeleton was an independent negative prognostic factor for both PFS and overall survival (97). Moreover, a high SUV_{max} (>15.9) was an independent negative prognostic factor for PFS, as was a high total

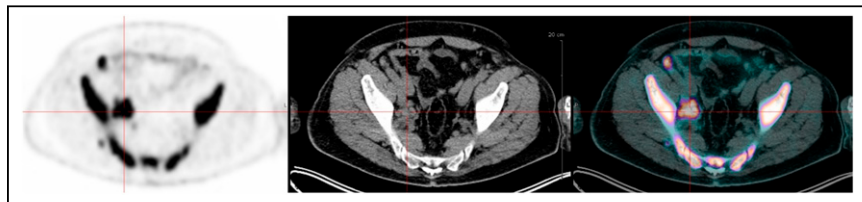


FIGURE 4. Axial PET (left), CT (middle), and PET/CT (right) images of right iliac lymph nodes with high ^{18}F -FDG avidity. Biopsy favored extramedullary disease.

TABLE 1
Elements to Be Specified in ¹⁸F-FDG PET/CT MM Reporting

Lesion	Definition
FL	Foci of uptake above surrounding background noise on 2 successive sections with or without osteolysis on computed image, excluding benign etiologies
Extramedullary disease	Tissue invasion without contiguous bone involvement
Paramedullary disease	Soft-tissue invasion with contiguous bone involvement
Diffuse medullary involvement	Homogeneous or heterogeneous diffuse uptake of pelvic-spinal-peripheral skeleton higher than liver background
FL SUV _{max}	SUV _{max} of bone FLs
¹⁸ F-FDG PET/CT abnormality	Presence of FLs, extramedullary disease lesions, paramedullary disease lesions, or diffuse medullary involvement

lesion glycolysis for the hottest lesion (>98.1). More recently, a study evaluated the predictive value of ¹⁸F-FDG PET/CT parameters for relapsed or refractory MM before initiating anti-CD38 treatment. The presence of more than 3 FLs and the Multiple Myeloma International Staging System score were independently associated with inferior PFS and overall survival, allowing the identification of a population with an ultrahigh risk of relapsed or refractory MM (98).

POTENTIAL OF ¹⁸F-FDG PET/CT FOR THERAPY ASSESSMENT AND MRD DETECTION

The ability to distinguish between metabolically active and inactive sites of MM makes ¹⁸F-FDG PET/CT an excellent tool to evaluate and monitor early and end-of-treatment response (99). Compared with morphologic classic T1- and T2-weighted MRI sequences, ¹⁸F-FDG PET/CT shows fewer false-positive images of persistent nonviable lesions and allows earlier and better detection of responders and prediction of outcome (2,4,66,76).

A complete normalization of ¹⁸F-FDG PET/CT findings after induction therapy, mainly at the premaintenance stage, is a powerful positive prognostic factor for PFS and overall survival in all large prospective studies conducted since 2009 (irrespective of the normalization used) (76,90,100–102), even in patients undergoing allogeneic stem cell transplantation (103). This capacity to accurately demonstrate therapy response is particularly relevant in patients with nonsecretory MM, for whom the clinical assessment cannot be achieved through biochemical methods. For newly diagnosed MM patients with FL, treatment until complete PET normalization is an important therapeutic goal because their prognosis is comparable to PET-negative patients at diagnosis (104). Failure to reach complete negativity was seen for 46.4% of patients at day 7, 23.6% at the end of induction, 11.4% after transplantation, and 7.3% at premaintenance and was associated with a worse outcome. Furthermore, despite morphologic lesion stability, changes in lesion metabolism have been shown to relate to therapy efficacy, to occur in a relatively short time, and to have prognostic meaning (as early as 7 d from the start of treatment) (100,104). Bailly et al. showed that for patients with ¹⁸F-FDG-avid MM included in the prospective IMAJEM study after 3 cycles of RVD, the change in SUV_{max} (cutoff of 25%) appeared to be an independent prognostic factor for PFS, allowing identification of a patient subgroup with an improved median PFS (22.6 mo and not reached, respectively) (105). Zamagni et al. (90), in a cohort of 192 newly diagnosed MM patients after induction therapy and double ASCT, showed that persistence of residual ¹⁸F-FDG-avid FLs after induction

therapy—defined as an SUV_{max} higher than 4.2—was an early predictor of shorter PFS. These findings have been confirmed in a larger patient cohort (101). Similar results were recently published in the posttransplantation setting. Kaddoura et al. showed significantly increased survival for patients reaching an ¹⁸F-FDG PET/CT complete response at approximately day 100 after ASCT (106). On the basis of these findings, the International Myeloma Working Group considers ¹⁸F-FDG PET/CT to be the standard imaging technique to monitor response to therapy in patients with MM (94), and ¹⁸F-FDG PET/CT has been listed as such in the MRD evaluation criteria (62).

Furthermore, the ¹⁸F-FDG PET/CT interpretation criteria after therapy (at premaintenance) have recently been standardized using the Deauville score (as for lymphomas) in a joint analysis of 2 prospective independent European randomized phase III trials (107). Complete metabolic response has been defined as residual uptake not exceeding the liver background activity (Deauville score, 1–3) in all initially involved bone marrow, FL, paramedullary disease, and extramedullary disease sites (Table 2).

Double negativity (¹⁸F-FDG PET/CT and multiparametric flow cytometry or next-generation sequencing in bone marrow) is a predictive surrogate for patient outcome (76,108,109). Rasche et al. showed, in a large cohort, that 12% of patients found to be MRD-negative after induction therapy still had positive FLs on ¹⁸F-FDG PET/CT analysis (110). Recently, a study by Böckle et al. included 102 patients with newly diagnosed MM (*n* = 57) and relapsed or refractory MM (*n* = 45), who achieved a good partial response, a complete response, or a stringent complete response by International Myeloma Working Group 2016 criteria (111). Functional imaging (¹⁸F-FDG PET/CT or diffusion-weighted MRI) was performed independently of bone marrow MRD results. Double-negativity rates were similar between patients with newly diagnosed MM and patients with relapsed or refractory MM, yet in the relapse setting a trend to more imaging-only positive patients was observed. Patients not achieving an optimal serologic response or MRD negativity by bone marrow and imaging were offered an individual consolidation approach: 72% of them showed a subsequent MRD conversion (51%) or deepening of serologic response levels (21%). MRD-triggered consolidation resulted in a superior PFS and overall survival comparable to a group of deep responders who achieved double-negative results after standard treatment without consolidation. In this patient population, the addition of functional imaging to bone marrow MRD assessment was helpful to tailor treatment and change prognosis.

TABLE 2
Interpretation Criteria for ¹⁸F-FDG PET/CT in MM Response to Therapy Assessment

Status	Definition
Complete metabolic response	Uptake ≤ liver activity in bone marrow sites and FLs previously involved (including extramedullary and paramedullary disease [Deauville score, 1–3])
Partial metabolic response	Decrease in number or activity of bone marrow sites/FLs present at baseline but persistence of lesions with uptake > liver activity (Deauville score, 4 or 5)
Stable metabolic disease	No significant change in bone marrow sites/FLs compared with baseline
Progressive metabolic disease	New FLs compared with baseline consistent with myeloma

Collectively, these results suggest that double negativity should be considered a surrogate for outcome prediction (up to deescalation strategies). However, even if a good prognostic value is demonstrated for double negativity, it is still unclear how to achieve this in patients who failed to achieve MRD negativity during standard treatment (67). Patients with double positivity or discordant results between the 2 methods (PET-positive/MRD-negative, PET-negative/MRD-positive) could represent better-stratified prognostic classes and undergo escalation or treatment modification. Finally, bispecific antibodies represent a promising and effective therapeutic approach in MM and have been recently approved by the European Medicines Agency in the relapse setting (53). Nevertheless, response monitoring using ¹⁸F-FDG PET/CT imaging has been shown to be challenging with therapeutic approaches involving cancer cell–T-cell interactions (i.e., CAR T cells, checkpoint inhibitor), and an ¹⁸F-FDG PET/CT early flare-up phenomenon could occur in MM patients receiving T-cell–engaging bispecific antibodies (112).

PERSPECTIVES

Non-¹⁸F-FDG Tracers

Many metabolic or tumor phenotype tracers have been investigated for PET imaging in MM. One of the first non-¹⁸F-FDG tracers used in this setting was ¹¹C-methionine. ¹¹C-methionine cellular uptake resembles the synthetic protein turnover by malignant cells. One advantage is that its bone marrow uptake is not influenced by anemia or systemic inflammation as for ¹⁸F-FDG. A prospective study of 78 patients demonstrated higher sensitivity for ¹¹C-methionine PET/CT than for standard ¹⁸F-FDG PET/CT to detect intra- and extramedullary MM lesions, including histologic evidence of ¹⁸F-FDG–negative, viable disease detectable exclusively by ¹¹C-methionine PET/CT (113). Similar results were recently published by Morales-Lozano et al. (114) in another prospective study ($n = 52$). ¹⁸F-FDG PET/CT did not detect active disease in 6 patients, whereas they were shown to be positive by ¹¹C-methionine PET/CT. Additionally, ¹¹C-methionine PET/CT identified a higher number of FLs than did ¹⁸F-FDG in more than half the patients (63%). The study also showed the prognostic value of total metabolic tumor volume and total lesion ¹¹C-methionine uptake in the relapsed MM patients. Furthermore, total metabolic tumor volume p50 (median) and p75 (75th percentile) and total lesion ¹¹C-methionine uptake p50 and p75 adversely impacted PFS.

Choline (either carbon- or fluorine-radiolabeled) has also been proposed as a non-¹⁸F-FDG tracer. At staging, this tracer has a higher positivity rate than ¹⁸F-FDG (115). In relapsing MM patients, ¹⁸F-fluorocholine PET/CT found higher numbers of lesions than ¹⁸F-FDG PET/CT (116). Compared with ¹⁸F-FDG, choline tracers can detect higher numbers of skull lesions (117). Finally, choline

PET/CT was also compared with ¹¹C-methionine PET/CT, with a higher detection rate for ¹¹C-methionine PET/CT in approximately 40% of patients (118).

¹¹C-acetate can rapidly be taken up by cells and metabolized to acetyl coenzyme A, a carbon source for fatty acid synthesis. In a group of heterogeneous MM patients, ¹¹C-acetate PET/CT demonstrated better overall sensitivity and specificity than ¹⁸F-FDG PET/CT (119). Similar results were obtained by Lin et al., also demonstrating a positive treatment response in cases of a significant decrease in SUV_{max} (120). Recently, in a prospective single-center study (64 patients), Chen et al. (121) compared ¹¹C-acetate PET/CT and ¹⁸F-FDG PET/CT in newly diagnosed MM. Skull deformation and lesions were more easily detected by ¹¹C-acetate PET/CT. In addition, ¹⁸F-FDG PET/CT demonstrated a higher rate of false-positives on fractures. The presence of diffuse bone marrow uptake, more than 10 FLs, and an SUV_{max} of more than 6.0 for FLs by ¹¹C-acetate PET/CT predicted a higher probability of disease progression and shorter PFS. Other tracers, such as ¹⁸F-sodium fluoride, ¹⁸F-fluciclovine, ¹⁸F-fluoroethyltyrosine, and ¹⁸F-fluorothymidine, have also been proposed; however, these are very preliminary studies (122–126). Another promising tracer is the ligand of prostate-specific membrane antigen, a characteristic biomarker for prostate cancer cells and with increased expression in the tumor vasculature. A case report indicated that ⁶⁸Ga-prostate-specific membrane antigen–targeted ligand PET imaging can be used to visualize multiple lytic bone lesions throughout the spine, but the definitive application in MM is still unclear (127,128).

Fibroblast activation protein inhibitor PET/CT was reported to have a high specificity and affinity for targeting fibroblast activation protein. Considering the optimal biodistribution with no bone marrow uptake, this probe could be useful as a complementary imaging method to ¹⁸F-FDG PET/CT in some settings, especially in low ¹⁸F-FDG affinity and inconclusive cases (129). However, in a recent study, PET/CT with this inhibitor showed a lower activity and detection rate for MM and lymphoma than did ¹⁸F-FDG PET/CT (130). Finally, immuno-PET imaging with radiolabeled monoclonal antibodies or antibody fragments has potential for MRD assessment and optimization of personalized therapy. ⁶⁴Cu-DOTA- or ⁸⁹Zr-desferrioxamine-daratumumab might be useful (131,132), as well as anti-CD138 targeted imaging (133,134). Anti-CD38 immuno-PET could be used to identify MM patients who would benefit from daratumumab and thus predict the effectiveness of treatment. Further validation of all these agents in larger patient cohorts and clinical trials is important.

⁶⁸Ga-pentixafor targeting CXCR4 has also been evaluated in MM patients. CXCR4 expression frequently occurs in advanced MM and probably represents a negative prognostic factor (135,136).

This tracer could be relevant for prognostic imaging or a theranostic approach before radioligand therapy using pentixather targeting CXCR4 labeled both with ^{90}Y and with ^{177}Lu . Indeed, ^{68}Ga -pentixafor seemed to be a prognostic stratifier in terms of overall survival in a population of 35 patients affected by relapsed or refractory MM (135). The prognostic characteristics turned out to be positivity versus negativity of the scan, presence of ^{68}Ga -pentixafor–positive extramedullary disease, and positive appendicular bone marrow. Nevertheless, in this population ^{18}F -FDG PET/CT was able to detect significantly more localizations than ^{68}Ga -pentixafor. Another study, conducted on 34 MM patients at diagnosis, found that the target-to-background ratio of ^{68}Ga -pentixafor was higher in 27 of the included patients, and the bone stage of the disease increased from I to II in 1 patient, I to III in 5 patients, and II to III in 3 patients as compared with ^{18}F -FDG PET/CT (137). In only one patient did ^{68}Ga -pentixafor detect fewer FLs than ^{18}F -FDG PET/CT. The excellent target-to-background ratio of ^{68}Ga -pentixafor imaging (compared with ^{18}F -FDG PET/CT) in patients with CXCR4 overexpression has been confirmed in the preliminary results of another ongoing prospective study (138). Although very preliminary, these studies are fundamental to correctly guide future CXCR4-targeted theranostic trials. A preliminary study using pentixather labeled with both ^{90}Y and ^{177}Lu has also been reported (139). Three patients in a late stage of disease were treated in the context of compassionate use, and one of them achieved a complete response at both skeletal and extraskelatal localizations, making this compound interesting for future applications. Finally, although unpublished, compounds based on fibroblast activation protein inhibitor and prostate-specific membrane antigen also warrant attention as potential theranostics in the near future.

Radiomics and Machine Learning

Tumor heterogeneity, as described at the cellular level, could probably be partly captured through medical image analysis, especially using PET-based images. This type of image analysis, often referred to as radiomics, has gained significant interest in the past few years, with several studies underscoring the potential of textural features. The high number of features extracted from a radiomics approach advocates the use of adapted statistical analysis given the highly dimensional nature of the problem and the associated risk of overfitting with low-complexity models (91). In this respect, a random-survival-forest approach outperformed more conventional approaches for prognosis purposes (140).

The potential prognostic value of ^{18}F -FDG PET–derived radiomics at baseline in newly diagnosed MM was explored for the first time recently in a combined analysis of 2 independent prospective European phase III trials using a random-survival-forest approach (91). Among all image features and clinical and histopathologic parameters collected, radiomics were not retained in the final prognosis model based on a random survival forest and set by only 3 features but belonged to the most predictive variables. Further investigations exploring the potential prognostic value of textural features in MM using the random-survival-forest approach are going to begin soon in a larger cohort of patients included in the multicenter international CASSIOPET study (86).

Furthermore, Tagliafico et al. showed that a radiomics approach could improve radiologic evaluation of MM on CT (141). Using a small retrospective cohort, Schenone et al. reported that artificial intelligence and radiomics' features prognostically stratified MM patients (142). Park et al. reported that machine learning provided an accurate and reliable diagnosis of diffuse bone marrow infiltration in MM patients (143). Jin et al. applied to ^{18}F -FDG PET/CT a

radiomics model that classified MM and bone metastases (144). Liu et al. demonstrated that a logistic regression–based machine learning method may be superior to other methods for assessing high-risk cytogenetic status in MM (145). Other radiomics methods were applied to MR images and were coupled to molecular and clinical information (146).

Many studies are retrospective, and when there is a small pool of patients, data mutability is a main problem for using such systems in hematology. It is currently unknown how these procedures would operate with inter- and intralaboratory variability. Moreover, current artificial intelligence techniques are not transparent in their elaboration processes; their interlocutors might not know how artificial intelligence techniques have reached a given conclusion: this could produce trust issues, especially when critical choices need to be based on these conclusions. For this reason alone, the application of artificial intelligence in clinical settings is in a preliminary phase (146,147).

Whole-Body Multiparametric Functional MRI

^{18}F -FDG PET/CT and whole-body MRI are both included in the updated International Myeloma Working Group definition of MM criteria and are used to evaluate the number of FLs and the presence of bone marrow involvement as surrogates of disease burden (94). The prospective IMAJEM study concluded that there was no difference in the detection of bone involvement at baseline MM between conventional pelvic–spinal MRI (without whole-body diffusion-weighted imaging) and whole-body ^{18}F -FDG PET/CT on a patient-based analysis (76).

The excellent image contrast between normal and diseased bone marrow by diffusion-weighted MRI leads to superior FL detection compared with conventional morphologic (included short- τ inversion recovery) and contrast-enhanced MRI sequences (148–150) and therefore is increasingly being used for MM work-up (151,152). The whole-body MRI protocol in MM should include axial T1- or T2-weighted turbo spin echo short- τ inversion recovery sequences, axial diffusion-weighted imaging with 2 b values (50 and 800 s/mm^2) and apparent diffusion coefficient (ADC) calculation with 3-dimensional MIP reconstructions of the highest b-value images, and whole-spine sagittal T1-weighted Dixon/T2-weighted short- τ inversion recovery turbo spin echo weighted sequences. The sensitivity of MRI for FL detection including this sequence seemed to be higher than that of ^{18}F -FDG PET/CT in recent comparative (82,153) and simultaneous PET/MRI (83) studies (Figs. 5 and 6).

Imaging with more than one b value allows automated calculation of the ADC for each voxel in the image, and a quantitative map can be produced. A tumor—with tightly packed cells—therefore appears as an area of restricted water diffusion and high signal on a source diffusion image and of low value on an ADC map, and response to therapy induces decreased cellularity, thereby diminishing the signal at a high b value and increasing the ADC values. Therefore, diffusion-weighted imaging theoretically allows therapy assessment. In a large cohort, Weinhold's team (110) highlighted more patients with residual FL on diffusion-weighted imaging than on ^{18}F -FDG PET/CT imaging at the onset of complete response after first-line or second-line therapy. There were patients with FLs in the PET-only analysis too, suggesting that the 2 techniques are complementary. Because the ADC cutoff value for FL positivity definition after therapy remains undetermined, the specificity of this sequence remains unclear. However, in this study, residual FLs—detectable in 24% of first-line patients—were associated with shorter PFS. Furthermore, the PFS of patients with

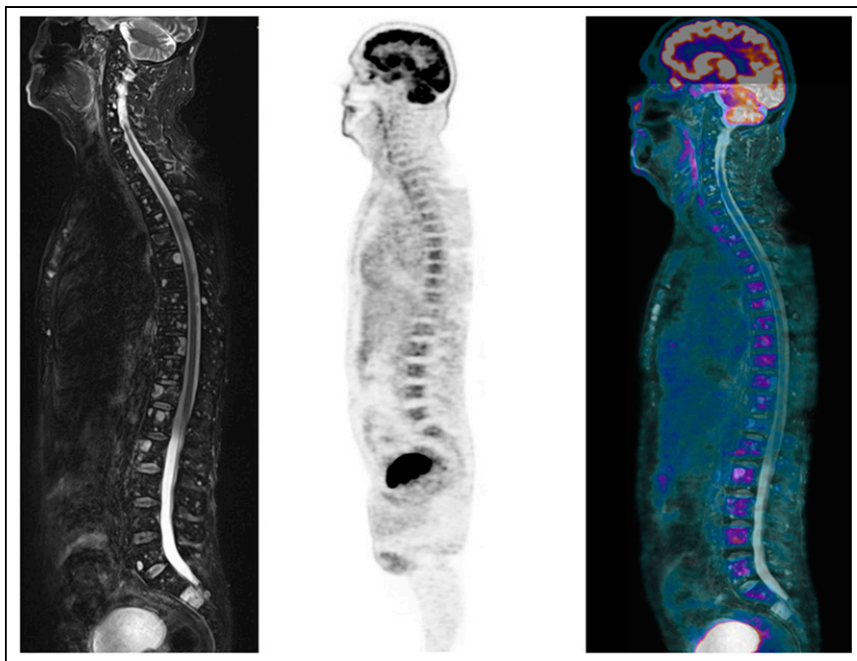


FIGURE 5. Sagittal T2-weighted short- τ inversion recovery MR (left), PET (middle), and PET/MR (right) images of disseminated FLs of spine. There is no evidence of increased ^{18}F -FDG avidity corresponding to MRI findings.



FIGURE 6. Sagittal PET (left), T2-weighted short- τ inversion recovery MR (middle), and PET/MR (right) images. Homogeneous diffuse bone marrow involvement is seen on MRI (diffuse homogeneous increased signal), with added FL in T7 body (with ^{18}F -FDG avidity). Anterior and posterior soft-tissue extension (arrows) defines paramedullary disease and leads to cord compression.

residual FLs that were detectable only using whole-body diffusion-weighted imaging was not significantly different from that of patients with residual PET-positive FLs (median PFS, 3.4 vs. 3.0 y). In another recent study (154,155), sustained MRD negativity assessed by diffusion-weighted imaging during maintenance therapy 1 y after ASCT had strong predictive relevance for survival in newly diagnosed MM patients.

Another study (156) showed that mean ADC increased in all but 1 of 20 patients who responded to treatment, whereas ADC decreased in all 5 patients who did not respond to treatment. ADC measurement was repeatable. ADC changes after therapy are included in the Myeloma Response Assessment and Diagnosis System MRI guidelines (152) to help define the response assessment category. The “highly likely to be responding” patient category includes previously evident lesions showing an increase in ADC from less than $1,400 \mu\text{m}^2/\text{s}$ to more than $1,400 \mu\text{m}^2/\text{s}$ and less than a 40% increase in ADC from baseline with a corresponding decrease in normalized high b-value signal intensity and morphologic findings consistent with stable or responding disease. We have to keep in mind that ADC values are influenced by many parameters, including the choice of b values, the diffusion time achievable with diffusion sequences, and both patient- and technique-related features (e.g., magnetic field strength and coils).

Another MRI-derived feature that could help for response to therapy assessment, especially in ^{18}F -FDG PET/CT-negative patients, is the fat fraction of FLs. In a study by Latifoltojar et al. (157), among different quantitative biomarkers extracted from MRI, signal fat fraction and ADC significantly increased in responders but not in nonresponders. FL fat fraction was the best discriminator of treatment response, and bone fat fraction repeatability was better than bone ADC repeatability.

Finally, new hybrid simultaneous PET/MRI has emerged recently, and these devices substitute MRI (coupled with PET) for the usual CT scan. For MM, the theoretic and practical benefit of performing single-shot simultaneous ^{18}F -FDG PET/MRI is high, but to date there are scarce data published. A preliminary retrospective study showed that whole-body PET/MRI provided optimal diagnostic performance (83). However, the study could not compare PET/MRI and PET/CT. Further trials assessing the diagnostic and prognostic performance of PET/MRI are needed.

CONCLUSION

¹⁸F-FDG PET/CT represents a powerful tool for the detection of medullary and extramedullary disease at the diagnosis of symptomatic MM, with a negative prognostic value for a high medullary SUV_{max} and for the presence of extramedullary disease and paramedullary disease. ¹⁸F-FDG PET/CT is considered the reference imaging technique for therapy assessment, evaluation being possible earlier than for conventional MRI. The negativity of pre-ASCT ¹⁸F-FDG PET/CT is a favorable prognostic factor, and the positivity of ¹⁸F-FDG PET/CT after ASCT, especially in patients with a complete biologic response, is an independent negative prognostic factor. Negative finding on ¹⁸F-FDG PET/CT, normal on intramedullary flow cytometry, and a normal ratio of serum free light chains would allow definition of an optimal complete response (eradication of monoclonal plasma cells in all compartments). Ongoing prospective trials will try to confirm the complementary role of functional imaging with molecular techniques for the detection of MRD inside and outside the bone marrow at relapse. ¹⁸F-FDG PET/CT is the best imaging technique to differentiate active disease from morphologic scars and remodeling. Other PET tracers and PET combined with MRI may also show benefit, especially in patients with false-negative ¹⁸F-FDG findings, but should be evaluated in prospective clinical trials. Radiomics and machine learning methods may improve the prognostic value of PET images.

REFERENCES

1. Rajkumar SV, Dimopoulos MA, Palumbo A, et al. International Myeloma Working Group updated criteria for the diagnosis of multiple myeloma. *Lancet Oncol*. 2014;15:e538–e548.
2. Dimopoulos MA, Hillengass J, Usmani S, et al. Role of magnetic resonance imaging in the management of patients with multiple myeloma: a consensus statement. *J Clin Oncol*. 2015;33:657–664.
3. Terpos E, Kiebler M, Engelhardt M, et al. European Myeloma Network guidelines for the management of multiple myeloma-related complications. *Haematologica*. 2015;100:1254–1266.
4. Cavo M, Terpos E, Nanni C, et al. Role of ¹⁸F-FDG PET/CT in the diagnosis and management of multiple myeloma and other plasma cell disorders: a consensus statement by the International Myeloma Working Group. *Lancet Oncol*. 2017;18:e206–e217.
5. Kumar SK, Rajkumar V, Kyle RA, et al. Multiple myeloma. *Nat Rev Dis Primers*. 2017;3:17046.
6. Rasche L, Chavan SS, Stephens OW, et al. Spatial genomic heterogeneity in multiple myeloma revealed by multi-region sequencing. *Nat Commun*. 2017 16;8:268.
7. Michaud-Robert AV, Jamet B, Bailly C, et al. FDG-PET/CT, a promising exam for detecting high-risk myeloma patients? *Cancers (Basel)*. 2020;12:1384.
8. Salaun P-Y, Gastinne T, Frampas E, et al. FDG-positron-emission tomography for staging and therapeutic assessment in patients with plasmacytoma. *Haematologica*. 2008;93:1269–1271.
9. Fouquet G, Guidez S, Herbaux C, et al. Impact of initial FDG-PET/CT and serum-free light chain on transformation of conventionally defined solitary plasmacytoma to multiple myeloma. *Clin Cancer Res*. 2014;20:3254–3260.
10. Siontis B, Kumar S, Dispenzieri A, et al. Positron emission tomography-computed tomography in the diagnostic evaluation of smoldering multiple myeloma: identification of patients needing therapy. *Blood Cancer J*. 2015;5:e364.
11. Zamagni E, Nanni C, Gay F, et al. ¹⁸F-FDG PET/CT focal, but not osteolytic, lesions predict the progression of smoldering myeloma to active disease. *Leukemia*. 2016;30:417–422.
12. Jamet B, Bailly C, Carlier T, et al. Interest of PET imaging in multiple myeloma. *Front Med (Lausanne)*. 2019;6:69.
13. Dimopoulos MA, Moreau P, Terpos E, et al. Multiple myeloma: EHA-ESMO clinical practice guidelines for diagnosis, treatment and follow-up. *HemaSphere*. 2021;5:e528.
14. Callander NS, Baljevic M, Adekola K, et al. NCCN Guidelines® insights: multiple myeloma, version 3.2022. *J Natl Compr Canc Netw*. 2022;20:8–19.
15. Moreau P, Kumar SK, San Miguel J, et al. Treatment of relapsed and refractory multiple myeloma: recommendations from the International Myeloma Working Group. *Lancet Oncol*. 2021;22:e105–e118.
16. Moreau P, Touzeau C. T-cell-redirecting bispecific antibodies in multiple myeloma: a revolution? *Blood*. 2022;139:3681–3687.
17. Rodriguez-Otero P, San-Miguel JF. Cellular therapy for multiple myeloma: what's now and what's next. *Hematology Am Soc Hematol Educ Program*. 2022;2022:180–189.
18. Attal M, Lauwers-Cances V, Hulin C, et al. Lenalidomide, bortezomib, and dexamethasone with transplantation for myeloma. *N Engl J Med*. 2017;376:1311–1320.
19. Cavo M, Gay F, Beksac M, et al. Autologous haematopoietic stem-cell transplantation versus bortezomib-melphalan-prednisone, with or without bortezomib-lenalidomide-dexamethasone consolidation therapy, and lenalidomide maintenance for newly diagnosed multiple myeloma (EMN02/HO95): a multicentre, randomised, open-label, phase 3 study. *Lancet Haematol*. 2020;7:e456–e468.
20. Gay F, Musto P, Rota-Scalabrini D, et al. Carfilzomib with cyclophosphamide and dexamethasone or lenalidomide and dexamethasone plus autologous transplantation or carfilzomib plus lenalidomide and dexamethasone, followed by maintenance with carfilzomib plus lenalidomide or lenalidomide alone for patients with newly diagnosed multiple myeloma (FORTE): a randomised, open-label, phase 2 trial. *Lancet Oncol*. 2021;22:1705–1720.
21. Richardson PG, Jacobus SJ, Weller EA, et al. Triplet therapy, transplantation, and maintenance until progression in myeloma. *N Engl J Med*. 2022;387:132–147.
22. Moreau P, Attal M, Hulin C, et al. Bortezomib, thalidomide, and dexamethasone with or without daratumumab before and after autologous stem-cell transplantation for newly diagnosed multiple myeloma (CASSIOPEIA): a randomised, open-label, phase 3 study. *Lancet*. 2019;394:29–38.
23. Voorhees PM, Kaufman JL, Laubach J, et al. Daratumumab, lenalidomide, bortezomib, and dexamethasone for transplant-eligible newly diagnosed multiple myeloma: the GRIFFIN trial. *Blood*. 2020;136:936–945.
24. Goldschmidt H, Mai EK, Bertsch U, et al. Addition of isatuximab to lenalidomide, bortezomib, and dexamethasone as induction therapy for newly diagnosed, transplantation-eligible patients with multiple myeloma (GMMG-HD7): part 1 of an open-label, multicentre, randomised, active-controlled, phase 3 trial. *Lancet Haematol*. 2022;9:e810–e821.
25. McCarthy PL, Holstein SA, Petrucci MT, et al. Lenalidomide maintenance after autologous stem-cell transplantation in newly diagnosed multiple myeloma: a meta-analysis. *J Clin Oncol*. 2017;35:3279–3289.
26. Sonneveld P, Dimopoulos MA, Beksac M, et al. Consolidation and maintenance in newly diagnosed multiple myeloma. *J Clin Oncol*. 2021;39:3613–3622.
27. Pawlyn C, Menzies T, Davies FE, et al. Defining the optimal duration of lenalidomide maintenance after autologous stem cell transplant: data from the myeloma XI trial [abstract]. *Blood*. 2022;140(suppl 1):570.
28. Facon T, Kumar S, Plesner T, et al. Daratumumab plus lenalidomide and dexamethasone for untreated myeloma. *N Engl J Med*. 2019;380:2104–2115.
29. Kumar SK, Moreau P, Bahlis NJ, et al. Daratumumab plus lenalidomide and dexamethasone (D-Rd) versus lenalidomide and dexamethasone (Rd) alone in transplant-ineligible patients with newly diagnosed multiple myeloma (NDMM): updated analysis of the phase 3 Maia study [abstract]. *Blood*. 2022;140(suppl 1):4559.
30. Durie BGM, Hoering A, Abidi MH, et al. Bortezomib with lenalidomide and dexamethasone versus lenalidomide and dexamethasone alone in patients with newly diagnosed myeloma without intent for immediate autologous stem-cell transplant (SWOG S0777): a randomised, open-label, phase 3 trial. *Lancet*. 2017;389:519–527.
31. Durie BGM, Lam A, Ngo M, et al. Post-hoc analysis of efficacy and safety in the SWOG S0777 trial stratified by age [abstract]. *Blood*. 2022;140(suppl 1):4497.
32. Mateos MV, Cavo M, Blade J, et al. Overall survival with daratumumab, bortezomib, melphalan, and prednisone in newly diagnosed multiple myeloma (ALCYONE): a randomised, open-label, phase 3 trial. *Lancet*. 2020;395:132–141.
33. Mateos MV, San Miguel J, Cavo M, et al. Daratumumab plus bortezomib, melphalan, and prednisone (D-VMP) versus bortezomib, melphalan, and prednisone (VMP) alone in transplant-ineligible patients with newly diagnosed multiple myeloma (NDMM): updated analysis of the phase 3 Alcyone study [abstract]. *Blood*. 2022;140(suppl 1):4561.
34. Facon T, Leleu X, Manier S. How I treat multiple myeloma in the geriatric patient. *Blood*. January 24, 2023 [Epub ahead of print].
35. Stewart AK, Rajkumar SV, Dimopoulos MA, et al. Carfilzomib, lenalidomide, and dexamethasone for relapsed multiple myeloma. *N Engl J Med*. 2015;372:142–152.
36. Moreau P, Masszi T, Grzasko N, et al. Oral ixazomib, lenalidomide, and dexamethasone for multiple myeloma. *N Engl J Med*. 2016;374:1621–1634.
37. Lonial S, Dimopoulos M, Palumbo A, et al. Elotuzumab therapy for relapsed or refractory multiple myeloma. *N Engl J Med*. 2015;373:621–631.
38. Dimopoulos MA, Oriol A, Nahi H, et al. Daratumumab, lenalidomide, and dexamethasone for multiple myeloma. *N Engl J Med*. 2016;375:1319–1331.
39. Dimopoulos M, Quach H, Mateos MV, et al. Carfilzomib, dexamethasone, and daratumumab versus carfilzomib and dexamethasone for patients with relapsed or

- refractory multiple myeloma (CANDOR): results from a randomised, multicentre, open-label, phase 3 study. *Lancet*. 2020;396:186–197.
40. Moreau P, Dimopoulos M, Mikhael J. al. Isatuximab, carfilzomib, and dexamethasone in relapsed multiple myeloma: a randomized phase 3 study. *Lancet*. 2021; 397:2361–2371.
 41. Richardson PG, Oriol A, Beksac M, et al. Pomalidomide, bortezomib, and dexamethasone for patients with relapsed or refractory multiple myeloma previously treated with lenalidomide (OPTIMISM): a randomised, open-label, phase 3 trial. *Lancet Oncol*. 2019;20:781–794.
 42. Dimopoulos M, Weisel K, Moreau P, et al. Pomalidomide, bortezomib, and dexamethasone for multiple myeloma previously treated with lenalidomide (OPTIMISM): outcomes by prior treatment at first relapse. *Leukemia*. 2021;35:1722–1731.
 43. Dimopoulos M, Oriol A, Nahi H, et al. Overall survival with daratumumab, lenalidomide, and dexamethasone in previously treated multiple myeloma (POLLUX): a randomized, open-label, phase III trial. *J Clin Oncol*. March 10, 2023 [Epub ahead of print].
 44. Attal M, Richardson PG, Rajkumar SV, et al. Isatuximab plus pomalidomide and low-dose dexamethasone versus pomalidomide and low-dose dexamethasone in patients with relapsed and refractory multiple myeloma (ICARIA-MM): a randomised, multicentre, open-label, phase 3 study. *Lancet*. 2019;394:2096–2107.
 45. Dimopoulos MA, Terpos E, Boccadoro M, et al. Daratumumab plus pomalidomide and dexamethasone versus pomalidomide and dexamethasone alone in previously treated multiple myeloma (APOLLO): an open-label, randomised, phase 3 trial. *Lancet Oncol*. 2021;22:801–812.
 46. Gandhi UH, Cornell RF, Lakshman A, et al. Outcomes of patients with multiple myeloma refractory to CD38-targeted monoclonal antibody therapy. *Leukemia*. 2019;33:2266–2275.
 47. Mateos MV, Weisel K, De Stefano V, et al. LocoMMotion: a prospective, non-interventional, multinational study of real-life current standards of care in patients with relapsed and/or refractory multiple myeloma. *Leukemia*. 2022;36:1371–1376.
 48. Chari A, Vogl DT, Gavriatopoulou M, et al. Oral selinexor-dexamethasone for triple-class refractory multiple myeloma. *N Engl J Med*. 2019;381:727–738.
 49. Lonial S, Lee HC, Badros A, et al. Belantamab mafodotin for relapsed or refractory multiple myeloma (DREAMM-2): a two-arm, randomised, open-label, phase 2 study. *Lancet Oncol*. 2020;21:207–221.
 50. Munshi NC, Anderson LD Jr, Shah N, et al. Idecabtagene vicleucel in relapsed and refractory multiple myeloma. *N Engl J Med*. 2021;384:705–716.
 51. Berdeja JG, Madduri D, Usmani SZ, et al. Ciltacabtagene autoleucel, a B-cell maturation antigen-directed chimeric antigen receptor T-cell therapy in patients with relapsed or refractory multiple myeloma (CARTITUDE-1): a phase 1b/2 open-label study. *Lancet*. 2021;398:314–324.
 52. Martin T, Usmani SZ, Berdeja JG, et al. Ciltacabtagene autoleucel, an anti-B-cell maturation antigen chimeric antigen receptor T-cell therapy, for relapsed/refractory multiple myeloma: CARTITUDE-1 2-year follow-up. *J Clin Oncol*. 2023;41:1265–1274.
 53. Moreau P, Garfall AL, van de Donk NWCJ, et al. Teclistamab in relapsed or refractory multiple myeloma. *N Engl J Med*. 2022;387:495–505.
 54. Chari A, Minnema MC, Berdeja JG, et al. Talquetamab, a T-cell-redirecting GPRC5D bispecific antibody for multiple myeloma. *N Engl J Med*. 2022;387: 2232–2244.
 55. Trudel S, Cohen AD, Krishnan AY, et al. Ceustamab monotherapy continues to show clinically meaningful activity and manageable safety in patients with heavily pre-treated relapsed/refractory multiple myeloma: updated results from an ongoing phase I study [abstract]. *Blood*. 2021;138(suppl 1):157.
 56. Cohen AD, Mateos MV, Cohen YC, et al. Efficacy and safety of cilta-cel in patients with progressive multiple myeloma after exposure to other BCMA-targeting agents. *Blood*. 2023;141:219–230.
 57. Dimopoulos MA, Moreau P, Terpos E, et al. Multiple myeloma: EHA-ESMO clinical practice guidelines for diagnosis, treatment and follow-up. *Ann Oncol*. 2021;32:309–322.
 58. Munshi NC, Avet-Loiseau H, Anderson KC, et al. A large meta-analysis establishes the role of MRD negativity in long-term survival outcomes in patients with multiple myeloma. *Blood Adv*. 2020;4:5988–5999.
 59. Avet-Loiseau H, Lauwers-Cances V, Corre J, et al. Minimal residual disease in multiple myeloma: final analysis of the IFM2009 trial [abstract]. *Blood*. 2017; 130(suppl 1):435.
 60. Bravo-Pérez C, Sola M, Teruel-Montoya R. et al. Minimal residual disease in multiple myeloma: something old, something new. *Cancers (Basel)*. 2021;13: 4332.
 61. Bertamini L, D'Agostino M, Gay F. MRD assessment in multiple myeloma: progress and challenges. *Curr Hematol Malig Rep*. 2021;16:162–171.
 62. Kumar S, Paiva B, Anderson KC, et al. International Myeloma Working Group consensus criteria for response and minimal residual disease assessment in multiple myeloma. *Lancet Oncol*. 2016;17:e328–e346.
 63. Bladé J, Beksac M, Caers J, et al. Extramedullary disease in multiple myeloma: a systematic literature review. *Blood Cancer J*. 2022;12:45.
 64. Perrot A, Lauwers-Cances V, Corre J, et al. Minimal residual disease negativity using deep sequencing is a major prognostic factor in multiple myeloma. *Blood*. 2018;132:2456–2464.
 65. Rasche L, Angtuaco EJ, Alpe TL, et al. The presence of large focal lesions is a strong independent prognostic factor in multiple myeloma. *Blood*. 2018;132:59–66.
 66. Zamagni E, Tacchetti P, Cavo M. Imaging in multiple myeloma: How? When? *Blood*. 2019;133:644–651.
 67. Martínez-López J, Alonso R, Wong SW, et al. Making clinical decisions based on measurable residual disease improves the outcome in multiple myeloma. *J Hematol Oncol*. 2021;14:126.
 68. Costa LJ, Chhabra S, Medvedova E, et al. Daratumumab, carfilzomib, lenalidomide, and dexamethasone with minimal residual disease response-adapted therapy in newly diagnosed multiple myeloma. *J Clin Oncol*. 2022;40:2901–2912.
 69. Costa LJ, Derman BA, Bal S, et al. International harmonization in performing and reporting minimal residual disease assessment in multiple myeloma trials. *Leukemia*. 2021;35:18–30.
 70. Dammacco F, Rubini G, Ferrari C, et al. ¹⁸F-FDG PET/CT: a review of diagnostic and prognostic features in multiple myeloma and related disorders. *Clin Exp Med*. 2015;15:1–18.
 71. Weng W-W, Dong M-J, Zhang J, et al. A systematic review of MRI, scintigraphy, FDG-PET and PET/CT for diagnosis of multiple myeloma related bone disease: which is best? *Asian Pac J Cancer Prev*. 2014;15:9879–9884.
 72. Lu YY, Chen JH, Lin WY, et al. FDG PET or PET/CT for detecting intramedullary and extramedullary lesions in multiple myeloma: a systematic review and meta-analysis. *Clin Nucl Med*. 2012;37:833–837.
 73. Walker RC, Brown TL, Jones-Jackson LB, et al. Imaging of multiple myeloma and related plasma cell dyscrasias. *J Nucl Med*. 2012;53:1091–1101.
 74. Sager S, Ergul N, Ciftci H, et al. The value of FDG PET/CT in the initial staging and bone marrow involvement of patients with multiple myeloma. *Skeletal Radiol*. 2011;40:843–847.
 75. Mesguich C, Fardanesh R, Tanenbaum L, et al. State of the art imaging of multiple myeloma: comparative review of FDG PET/CT imaging in various clinical settings. *Eur J Radiol*. 2014;83:2203–2223.
 76. Moreau P, Attal M, Caillot D, et al. Prospective evaluation of magnetic resonance imaging and [¹⁸F]fluorodeoxyglucose positron emission tomography-computed tomography at diagnosis and before maintenance therapy in symptomatic patients with multiple myeloma included in the IFM/DFCI 2009 trial: results of the IMA-JEM study. *J Clin Oncol*. 2017;35:2911–2918.
 77. Nanni C, Versari A, Chauvie S, et al. Interpretation criteria for FDG PET/CT in multiple myeloma (IMPeTUs): final results. IMPeTUs (Italian myeloma criteria for PET Use). *Eur J Nucl Med Mol Imaging*. 2018;45:712–719.
 78. van Lammeren-Venema D, Regelink JC, Riphagen II, et al. ¹⁸F-fluoro-deoxyglucose positron emission tomography in assessment of myeloma-related bone disease: a systematic review. *Cancer*. 2012;118:1971–1981.
 79. Zamagni E, Nanni C, Patriarca F, et al. A prospective comparison of ¹⁸F-fluoro-deoxyglucose positron emission tomography-computed tomography, magnetic resonance imaging and whole-body planar radiographs in the assessment of bone disease in newly diagnosed multiple myeloma. *Haematologica*. 2007;92:50–55.
 80. Fonti R, Salvatore B, Quarantelli M, et al. ¹⁸F-FDG PET/CT, ^{99m}Tc-MIBI, and MRI in evaluation of patients with multiple myeloma. *J Nucl Med*. 2008;49:195–200.
 81. Fonti R, Pace L, Cerchione C, et al. ¹⁸F-FDG PET/CT, ^{99m}Tc-MIBI, and MRI in the prediction of outcome of patients with multiple myeloma: a comparative study. *Clin Nucl Med*. 2015;40:303–308.
 82. Westerland O, Amlani A, Kelly-Morland C, et al. Comparison of the diagnostic performance and impact on management of ¹⁸F-FDG PET/CT and whole-body MRI in multiple myeloma. *Eur J Nucl Med Mol Imaging*. 2021;48:2558–2565.
 83. Burns R, Mulé S, Blanc-Durand P, et al. Optimization of whole-body 2-[¹⁸F]FDG-PET/MRI imaging protocol for the initial staging of patients with myeloma. *Eur Radiol*. 2022;32:3085–3096.
 84. Rasche L, Angtuaco E, McDonald JE, et al. Low expression of hexokinase-2 is associated with false-negative FDG-positron emission tomography in multiple myeloma. *Blood*. 2017;130:30–34.
 85. Alberge JB, Kraeber-Bodéré F, Jamet B, et al. Molecular signature of ¹⁸F-FDG PET biomarkers in newly diagnosed multiple myeloma patients: a genome-wide transcriptome analysis from the CASSIOPET study. *J Nucl Med*. 2022;63:1008–1013.
 86. Kraeber-Bodéré F, Zweegman S, Perrot A, et al. Prognostic value of positron emission tomography/computed tomography in transplant eligible newly diagnosed multiple myeloma patients from CASSIOPEIA: the CASSIOPET study. *Haematologica*. 2023;108:621–626.
 87. Abe Y, Ikeda S, Kitadate A, et al. Low hexokinase-2 expression-associated false-negative ¹⁸F-FDG PET/CT as a potential prognostic predictor in patients with multiple myeloma. *Eur J Nucl Med Mol Imaging*. 2019;46:1345–1350.

88. Michaud-Robert AV, Zamagni E, Carlier T, et al. Glucose metabolism quantified by SUVmax on baseline FDG-PET/CT predicts survival in newly diagnosed multiple myeloma patients: combined harmonized analysis of two prospective phase III trials. *Cancers (Basel)*. 2020;12:2532.
89. Bartel TB, Haessler J, Brown TL, et al. F18-fluorodeoxyglucose positron emission tomography in the context of other imaging techniques and prognostic factors in multiple myeloma. *Blood*. 2009;114:2068–2076.
90. Zamagni E, Patriarca F, Nanni C, et al. Prognostic relevance of ¹⁸F FDG PET/CT in newly diagnosed multiple myeloma patients treated with up-front autologous transplantation. *Blood*. 2011;118:5989–5995.
91. Jamet B, Morvan L, Nanni C, et al. Random survival forest to predict transplant-eligible newly diagnosed multiple myeloma outcome including FDG-PET radiomics: a combined analysis of two independent prospective European trials. *Eur J Nucl Med Mol Imaging*. 2021;48:1005–1015.
92. McDonald JE, Kessler MM, Gardner MW, et al. Assessment of total lesion glycolysis by ¹⁸F FDG PET/CT significantly improves prognostic value of GEP and ISS in myeloma. *Clin Cancer Res*. 2017;23:1981–1987.
93. Terao T, Machida Y, Tsushima T, et al. Pre-treatment metabolic tumour volume and total lesion glycolysis are superior to conventional positron-emission tomography/computed tomography variables for outcome prediction in patients with newly diagnosed multiple myeloma in clinical practice. *Br J Haematol*. 2020;191:223–230.
94. Hillengass J, Usmani S, Rajkumar SV, et al. International myeloma working group consensus recommendations on imaging in monoclonal plasma cell disorders. *Lancet Oncol*. 2019;20:e302–e312.
95. Kyle RA, Larson DR, Therneau TM, et al. Long-term follow-up of monoclonal gammopathy of undetermined significance. *N Engl J Med*. 2018;378:241–249.
96. Lapa C, Lückereath K, Malzahn U, et al. ¹⁸F-FDG-PET/CT for prognostic stratification of patients with multiple myeloma relapse after stem cell transplantation. *Oncotarget*. 2014;5:7381–7391.
97. Jamet B, Bailly C, Carlier T, et al. Added prognostic value of FDG-PET/CT in relapsing multiple myeloma patients. *Leuk Lymphoma*. 2019;60:222–225.
98. Fouquet G, Wartski M, Dechmi A, et al. Prognostic value of FDG-PET/CT parameters in patients with relapse/refractory multiple myeloma before anti-CD38 based therapy. *Cancers (Basel)*. 2021;13:4323.
99. Spinnato P, Bazzocchi A, Brioli A, et al. Contrast enhanced MRI and ¹⁸F-FDG PET-CT in the assessment of multiple myeloma: a comparison of results in different phases of the disease. *Eur J Radiol*. 2012;81:4013–4018.
100. Usmani SZ, Mitchell A, Waheed S, et al. Prognostic implications of serial ¹⁸F-fluoro-deoxyglucose emission tomography in multiple myeloma treated with total therapy 3. *Blood*. 2013;121:1819–1823.
101. Zamagni E, Nanni C, Mancuso K, et al. PET/CT improves the definition of complete response and allows to detect otherwise unidentifiable skeletal progression in multiple myeloma. *Clin Cancer Res*. 2015;21:4384–4390.
102. Charalampous C, Goel U, Broski SM, et al. Utility of PET/CT in assessing early treatment response in patients with newly diagnosed multiple myeloma. *Blood Adv*. 2022;6:2763–2772.
103. Stolzenburg A, Lückereath K, Samnick S, et al. Prognostic value of [¹⁸F]FDG-PET/CT in multiple myeloma patients before and after allogeneic hematopoietic cell transplantation. *Eur J Nucl Med Mol Imaging*. 2018;45:1694–1704.
104. Davies FE, Rosenthal A, Rasche L, et al. Treatment to suppression of focal lesions on positron emission tomography-computed tomography is a therapeutic goal in newly diagnosed multiple myeloma. *Haematologica*. 2018;103:1047–1053.
105. Bailly C, Carlier T, Jamet B, et al. Interim PET analysis in first-line therapy of multiple myeloma: prognostic value of ΔSUVmax in the FDG-avid patients of the IMAJEM study. *Clin Cancer Res*. 2018;24:5219–5224.
106. Kaddoura M, Dingli D, Buadi FK, et al. Prognostic impact of posttransplant FDG PET/CT scan in multiple myeloma. *Blood Adv*. 2021;5:2753–2759.
107. Zamagni E, Nanni C, Dozza L, et al. Standardization of ¹⁸F-FDG-PET/CT according to Deauville criteria for metabolic complete response definition in newly diagnosed multiple myeloma. *J Clin Oncol*. 2021;39:116–125.
108. Jamet B, Zamagni E, Nanni C, et al. Functional imaging for therapeutic assessment and minimal residual disease detection in multiple myeloma. *Int J Mol Sci*. 2020;21:5406.
109. Alonso R, Cedena MT, Gómez-Grande A, et al. Imaging and bone marrow assessments improve minimal residual disease prediction in multiple myeloma. *Am J Hematol*. 2019;94:853–861.
110. Rasche L, Alapat D, Kumar M, et al. Combination of flow cytometry and functional imaging for monitoring of residual disease in myeloma. *Leukemia*. 2019;33:1713–1722.
111. Böckle D, Tabares P, Zhou X, et al. Minimal residual disease and imaging-guided consolidation strategies in newly diagnosed and relapsed refractory multiple myeloma. *Br J Haematol*. 2022;198:515–522.
112. Jamet B, Bodet-Milin C, Moreau P, et al. 2-[¹⁸F]FDG-PET/CT flare-up phenomena following T-cell engager bispecific antibody in multiple myeloma. *Clin Nucl Med*. 2023;48:e230–e231.
113. Lapa C, Garcia-Velloso MJ, Lückereath K, et al. ¹¹C-methionine-PET in multiple myeloma: a combined study from two different institutions. *Theranostics*. 2017;7:2956–2964.
114. Morales-Lozano MI, Rodriguez-Otero P, Sancho L, et al. ¹¹C-methionine PET/CT in assessment of multiple myeloma patients: comparison to ¹⁸F-FDG PET/CT and prognostic value. *Int J Mol Sci*. 2022;23:9895.
115. Nanni C, Zamagni E, Cavo M, et al. ¹¹C-choline vs. ¹⁸F-FDG PET/CT in assessing bone involvement in patients with multiple myeloma. *World J Surg Oncol*. 2007;5:68.
116. Cassou-Mounat T, Balogova S, Nataf V, et al. ¹⁸F-fluorocholine versus ¹⁸F-fluoro-deoxyglucose for PET/CT imaging in patients with suspected relapsing or progressive multiple myeloma: a pilot study. *Eur J Nucl Med Mol Imaging*. 2016;43:1995–2004.
117. Meckova Z, Lambert L, Spicka I, et al. Is fluorine-18-fluorocholine PET/CT suitable for the detection of skeletal involvement of multiple myeloma? *Hell J Nucl Med*. 2018;21:167–168.
118. Lapa C, Kircher M, Da Via M, et al. Comparison of ¹¹C-choline and ¹¹C-methionine PET/CT in multiple myeloma. *Clin Nucl Med*. 2019;44:620–624.
119. Ho CL, Chen S, Leung YL, et al. ¹¹C-acetate PET/CT for metabolic characterization of multiple myeloma: a comparative study with ¹⁸F-FDG PET/CT. *J Nucl Med*. 2014;55:749–752.
120. Lin C, Ho CL, Ng SH, et al. ¹¹C-acetate as a new biomarker for PET/CT in patients with multiple myeloma: initial staging and postinduction response assessment. *Eur J Nucl Med Mol Imaging*. 2014;41:41–49.
121. Chen M, Zhu W, Du J, et al. ¹¹C-acetate positron emission tomography is more precise than ¹⁸F-fluoro-deoxyglucose positron emission tomography in evaluating tumor burden and predicting disease risk of multiple myeloma. *Sci Rep*. 2021;11:22188.
122. Sachpekidis C, Goldschmidt H, Kopka K, et al. Assessment of glucose metabolism and cellular proliferation in multiple myeloma: a first report on combined ¹⁸F-FDG and ¹⁸F-FLT PET/CT imaging. *EJNMMI Res*. 2018;8:28.
123. Stokke C, Nørgaard JN, Feiring Phillips H, et al. Comparison of [¹⁸F]fluciclovine and [¹⁸F]FDG PET/CT in newly diagnosed multiple myeloma patients. *Mol Imaging Biol*. 2022;24:842–851.
124. Czyż J, Małkowski B, Jurczyszyn A, et al. ¹⁸F-fluoro-ethyl-tyrosine (¹⁸F-FET) PET/CT as a potential new diagnostic tool in multiple myeloma: a preliminary study. *Contemp Oncol (Pozn)*. 2019;23:23–31.
125. Zadeh MZ, Seraj SM, Østergaard B, et al. Prognostic significance of ¹⁸F-sodium fluoride in newly diagnosed multiple myeloma patients. *Am J Nucl Med Mol Imaging*. 2020;10:151–160.
126. Dyrberg E, Hendel HW, Al-Farra G, et al. A prospective study comparing whole-body skeletal x-ray survey with ¹⁸F-FDG-PET/CT, ¹⁸F-NaF-PET/CT and whole-body MRI in the detection of bone lesions in multiple myeloma patients. *Acta Radiol Open*. 2017;6:2058460117738809.
127. Alabed YZ. Multiple solitary plasmacytomas with multifocal bone involvement diagnosed with ⁶⁸Ga-prostate-specific membrane antigen PET/CT. *Clin Nucl Med*. 2020;45:e51–e52.
128. Veerasuri S, Redman S, Graham R, et al. Non-prostate uptake on ¹⁸F-PSMA-1007 PET/CT: a case of myeloma. *BJR Case Rep*. 2020;7:20200102.
129. Elboga U, Sahin E, Cayirli YB, et al. Comparison of [⁶⁸Ga]-FAPI PET/CT and [¹⁸F]-FDG PET/CT in multiple myeloma: clinical experience. *Tomography*. 2022;8:293–302.
130. Lan L, Liu H, Wang Y, et al. The potential utility of [⁶⁸Ga]Ga-DOTA-FAPI-04 as a novel broad-spectrum oncological and non-oncological imaging agent: comparison with [¹⁸F]FDG. *Eur J Nucl Med Mol Imaging*. 2022;49:963–979.
131. Caserta E, Chea J, Minnix M, et al. Copper 64-labeled daratumumab as a PET/CT imaging tracer for multiple myeloma. *Blood*. 2018;131:741–745.
132. Ulaner GA, Sobol NB, O'Donoghue JA, et al. CD38-targeted immuno-PET of multiple myeloma: from xenograft models to first-in-human imaging. *Radiology*. 2020;295:606–615.
133. Bailly C, Gouard S, Lacombe M, et al. Comparison of immuno-PET of CD138 and PET imaging with ⁶⁴CuCl₂ and ¹⁸F-FDG in a preclinical syngeneic model of multiple myeloma. *Oncotarget*. 2018;9:9061–9072.
134. Bailly C, Chalopin B, Gouard S, et al. ImmunoPET in multiple myeloma: What? So what? Now what? *Cancers (Basel)*. 2020;12:1467.
135. Lapa C, Schreder M, Schirbel A, et al. [⁶⁸Ga]pentixafor-PET/CT for imaging of chemokine receptor CXCR4 expression in multiple myeloma: comparison to [¹⁸F]FDG and laboratory values. *Theranostics*. 2017;7:205–212.
136. Kuyumcu S, Isik EG, Tiryaki TO, et al. Prognostic significance of ⁶⁸Ga-pentixafor PET/CT in multiple myeloma recurrence: a comparison to ¹⁸F-FDG PET/CT and laboratory results. *Ann Nucl Med*. 2021;35:1147–1156.
137. Shekhawat AS, Singh B, Malhotra P, et al. Imaging CXCR4 receptors expression for staging multiple myeloma by using ⁶⁸Ga-pentixafor PET/CT: comparison with ¹⁸F-FDG PET/CT. *Br J Radiol*. 2022;95:20211272.

138. Bodet-Milin C, Mouton A, Jamet B, et al. Promising performance of PET/CT using [⁶⁸Ga]GaPentixaFor (PentixaFor PET/CT) for initial staging and therapeutic evaluation of symptomatic multiple myeloma (MM) patients in first line treatment or first relapse: preliminary results of an exploratory phase 2 study [abstract]. *Eur J Nucl Med Mol Imaging*. 2022;49(suppl 1):S144.
139. Herrmann K, Schottelius M, Lapa C, et al. First-in-human experience of CXCR4-directed endoradiotherapy with ¹⁷⁷Lu- and ⁹⁰Y-labeled pentixather in advanced-stage multiple myeloma with extensive intra- and extramedullary disease. *J Nucl Med*. 2016;57:248–251.
140. Morvan L, Carlier T, Jamet B, et al. Leveraging RSF and PET images for prognosis of multiple myeloma at diagnosis. *Int J Comput Assist Radiol Surg*. 2020;15:129–139.
141. Tagliafico AS, Cea M, Rossi F, et al. Differentiating diffuse from focal pattern on computed tomography in multiple myeloma: added value of a radiomics approach. *Eur J Radiol*. 2019;121:108739.
142. Schenone D, Dominietto A, Campi C, et al. Radiomics and artificial intelligence for outcome prediction in multiple myeloma patients undergoing autologous transplantation: a feasibility study with CT data. *Diagnostics (Basel)*. 2021;11:1759.
143. Park H, Lee SY, Lee J, et al. Detecting multiple myeloma infiltration of the bone marrow on CT scans in patients with osteopenia: feasibility of radiomics analysis. *Diagnostics (Basel)*. 2022;12:923.
144. Jin Z, Wang Y, Wang Y, et al. Application of ¹⁸F-FDG PET-CT images based radiomics in identifying vertebral multiple myeloma and bone metastases. *Front Med (Lausanne)*. 2022;9:874847.
145. Liu J, Zeng P, Guo W, et al. Prediction of high-risk cytogenetic status in multiple myeloma based on magnetic resonance imaging: utility of radiomics and comparison of machine learning methods. *J Magn Reson Imaging*. 2021;54:1303–1311.
146. Venezian P, Povoas L, Ribeiro CHC, da Silva IT. Machine learning predicts treatment sensitivity in multiple myeloma based on molecular and clinical information coupled with drug response. *PLoS One*. 2021;16:e0254596.
147. Allegra A, Tonacci A, Sciacotta R, et al. Machine learning and deep learning applications in multiple myeloma diagnosis, prognosis, and treatment selection. *Cancers (Basel)*. 2022;14:606.
148. Pearce T, Philip S, Brown J, et al. Bone metastases from prostate, breast and multiple myeloma: differences in lesion conspicuity at short-tau inversion recovery and diffusion-weighted MRI. *Br J Radiol*. 2012;85:1102–1106.
149. Squillaci E, Bolacchi F, Altobelli S, et al. Pre-treatment staging of multiple myeloma patients: comparison of whole-body diffusion weighted imaging with whole-body T1-weighted contrast-enhanced imaging. *Acta Radiol*. 2015;56:733–738.
150. Dutoit JC, Vanderkerken MA, Anthonissen J, et al. The diagnostic value of SE MRI and DWI of the spine in patients with monoclonal gammopathy of undetermined significance, smouldering myeloma and multiple myeloma. *Eur Radiol*. 2014;24:2754–2765.
151. Hillengass J, Bauerle T, Bartl R, et al. Diffusion-weighted imaging for non-invasive and quantitative monitoring of bone marrow infiltration in patients with monoclonal plasma cell disease: a comparative study with histology. *Br J Haematol*. 2011;153:721–728.
152. Messiou C, Hillengass J, Delorme S, et al. Guidelines for acquisition, interpretation, and reporting of whole-body MRI in myeloma: Myeloma Response Assessment and Diagnosis System (MY-RADS). *Radiology*. 2019;291:5–13.
153. Mesguich C, Hulin C, Latrabe V, et al. Prospective comparison of ¹⁸F-FDG PET/CT and whole-body diffusion-weighted MRI in the assessment of multiple myeloma. *Ann Hematol*. 2020;99:2869–2880.
154. Belotti A, Ribolla R, Cancelli V, et al. Predictive role of diffusion-weighted whole-body MRI (DW-MRI) imaging response according to MY-RADS criteria after autologous stem cell transplantation in patients with multiple myeloma and combined evaluation with MRD assessment by flow cytometry. *Cancer Med*. 2021;10:5859–5865.
155. Belotti A, Ribolla R, Crippa C, et al. Failure to achieve sustained imaging MRD negativity assessed by diffusion-weighted whole-body MRI (DW-MRI) is associated with adverse prognosis in newly diagnosed multiple myeloma patients treated with autologous stem cell transplantation followed by maintenance therapy. *Blood*. 2022;140(suppl 1):1140–1141.
156. Giles SL, Messiou C, Collins DJ, et al. Whole-body diffusion-weighted MR imaging for assessment of treatment response in myeloma. *Radiology*. 2014;271:785–794.
157. Latifoltojar A, Hall-Craggs M, Bainbridge A, et al. Whole-body MRI quantitative biomarkers are associated significantly with treatment response in patients with newly diagnosed symptomatic multiple myeloma following bortezomib induction. *Eur Radiol*. 2017;27:5325–5336.