







Genome-wide association studies for diarrhoea outcomes identified genomic regions affecting resistance to a severe enteropathy in suckling rabbits

Samuele Bovo¹  | Anisa Ribani¹  | Giuseppina Schiavo¹  | Valeria Taurisano¹  |
Francesca Bertolini¹  | Daniela Fornasini² | Andrea Frabetti² | Luca Fontanesi¹ 

¹Animal and Food Genomics Group, Division of Animal Sciences, Department of Agricultural and Food Sciences, University of Bologna, Bologna, Italy

²Gruppo Martini S.p.A., Centro Genetica Conigli (Rabbit Genetic Center), Longiano, Italy

Correspondence

Luca Fontanesi, Animal and Food Genomics Group, Division of Animal Sciences, Department of Agricultural and Food Sciences, University of Bologna, Viale Giuseppe Fanin 46, 40127 Bologna, Italy.
Email: luca.fontanesi@unibo.it

Funding information

Università di Bologna; Gruppo Martini

Abstract

Selection and breeding strategies to improve resistance to enteropathies are essential to reaching the sustainability of the rabbit production systems. However, disease heterogeneity (having only as major visible symptom diarrhoea) and low disease heritability are two barriers for the implementation of these strategies. Diarrhoea condition can affect rabbits at different life stages, starting from the suckling period, with large negative economic impacts. In this study, from a commercial population of suckling rabbits (derived from 133 litters) that experienced an outbreak of enteropathy, we first selected a few animals that died with severe symptoms of diarrhoea and characterized their microbiota, using 16S rRNA gene sequencing data. *Clostridium* genus was consistently present in all affected specimens. In addition, with the aim to identify genetic markers in the rabbit genome that could be used as selection tools, we performed genome-wide association studies for symptoms of diarrhoea in the same commercial rabbit population. These studies were also complemented with F_{ST} analyses between the same groups of rabbits. A total of 332 suckling rabbits (151 with severe symptoms of diarrhoea, 42 with mild symptoms and 129 without any symptoms till the weaning period), derived from 45 different litters (a subset of the 133 litters) were genotyped with the Affymetrix Axiom OrcunSNP Array. In both genomic approaches, rabbits within litters were paired to constitute two groups (susceptible and resistant, including the mildly affected in one or the other group) and run case and control genome-wide association analyses. Genomic heritability estimated in the designed experimental structure integrated in a commercial breeding scheme was 0.19–0.21 (s.e. 0.09–0.10). A total of eight genomic regions on rabbit chromosome 2 (OCU2), OCU3, OCU7, OCU12, OCU13, OCU16 and in an unassembled scaffold had significant single nucleotide polymorphisms (SNPs) and/or markers that trespassed the F_{ST} percentile distribution. Among these regions, three main peaks of SNPs were identified on OCU12, OCU13 and OCU16. The QTL region on OCU13 encompasses

This is an open access article under the terms of the [Creative Commons Attribution](https://creativecommons.org/licenses/by/4.0/) License, which permits use, distribution and reproduction in any medium, provided the original work is properly cited.

© 2023 The Authors. *Journal of Animal Breeding and Genetics* published by John Wiley & Sons Ltd.

several genes that encode members of a family of immunoglobulin Fc receptors (*FCER1G*, *FCRLA*, *FCRLB* and *FCGR2A*) involved in the immune innate system, which might be important candidate genes for this pathogenic condition. The results obtained in this study demonstrated that resistance to an enteropathy occurring in suckling rabbits is in part genetically determined and can be dissected at the genomic level, providing DNA markers that could be used in breeding programmes to increase resistance to enteropathies in meat rabbits.

KEYWORDS

candidate gene, disease resistance, immunoglobulin fc receptor, innate immunity, microbiota, *Oryctolagus cuniculus*, SNP

1 | INTRODUCTION

Selection and breeding strategies to improve disease resistance and the related components, resilience and tolerance (Bishop & Woolliams, 2014; Knap & Doeschl-Wilson, 2020), are essential to reaching sustainability of the animal production systems. Genetic progress for these objectives can also lead to reduced use of antibiotics, improved animal welfare, reduced mortality and, in turn, direct and indirect reduced production costs, which might also contribute to reduce the overall carbon footprint of the livestock sector (Gunia et al., 2018; Phocas et al., 2016). However, in practice, the implementation of selection strategies to improve disease resistance is quite complex for several reasons, including, the facts that (i) many different diseases/pathogens might be relevant or involved, each with its own biological and epidemiological peculiarities, (ii) it is difficult or economically not feasible to record and collect useful phenotypes/information for a comprehensive genetic evaluation, (iii) even in cases where this would be feasible, heritability of relevant traits is usually very low, and (iv) environments and natural challenging conditions of commercial farms are usually very different from those of the selection nuclei, making the transfer of the genetic progress, from the selection nuclei to the basis of the pyramidal animal production structure, not completely effective.

Enteropathies and related digestive disorders are among the main causes of economic losses in rabbitries. These enteric problems, whose main clinical sign is diarrhoea, are relevant both in suckling and post-weaning growing rabbits; on average, diarrhoea may lead to an overall mortality of about 8%–10%, reaching, in some conditions, even 50% or higher levels (Harcourt-Brown, 2002; Licois et al., 2005, 2006; Marlier et al., 2003; Rashwan & Marai, 2000; Rosell, 2003; Solans et al., 2019). Enteropathies are determined by several pathogenic factors, including an imbalanced fibre diet, coccidiosis, epizootic enterocolitis from a few bacterial and viral infections and co-infections that

may vary in frequency and co-occurrence, making very difficult to disentangle the complexity and the causative agents of this multi-factorial and heterogeneous pathogenic condition in rabbits (Garreau et al., 2006, 2021; Harcourt-Brown, 2002; Lavazza et al., 2008). In more details, several pathogens have been reported to be the causative or co-causative agents of enteric diseases in rabbits, including enteropathogenic *Escherichia coli* (ETEC) strains (considered among the most frequent agents, also at the pre-weaning phase), *Clostridium spiroforme*, *C. perfringens*, *Enterococcus hirae*, *Enterobacter sakazakii*, *Barceroides fragilis*, *Akkermansia muciniphila*, *Salmonella* spp., several coccidian protozoa of the *Eimeria* genus and group A rotavirus (Agnoletti et al., 1999; Carman & Borriello, 1984; Djukovic et al., 2018; Dow et al., 2005; Garcia et al., 2014; Jin et al., 2018; Lavazza et al., 2008; Malo, 2019; Myers et al., 1989; Solans et al., 2019; Vela et al., 2010).

Resistance to this complex and heterogeneous pathogenic condition and related infections in rabbits is in part genetically determined, with estimated heritability that ranges from 0.02 to 0.08 using simple records of disease syndrome, which may vary according to the heterogeneity of the potential causative agents, growing phase and the co-effects of nutritional, maternal and other environmental factors (De Rochambeau et al., 2006; Eady et al., 2007; García-Quirós et al., 2014; Garreau et al., 2006, 2008; Gunia et al., 2015; Licois et al., 2005). This evidence opened the possibility for the implementation of selection strategies to increase resistance against enteropathies and related pathogenic conditions in commercial meat rabbit populations and investigate the genetic factors involved in this complex pathogenic status (Garreau et al., 2008, 2012, 2021). Several studies reported that polymorphisms in candidate genes involved in host immunity might be associated with the susceptibility of non-specific digestive disorders in growing rabbits of a few lines (Chen, Zhang, et al., 2013; Fu et al., 2014, 2015; Li et al., 2018; Liu et al., 2013, 2017; Yang et al., 2013; Zhang et al., 2011;

Zhang, Zhang, Chen, et al., 2013; Zhang, Zhang, Peng, et al., 2013). However, it seems clear that the association reported in these investigations should be validated and confirmed with other studies that can provide more comprehensive genome-wide analyses, in different lines and in specifically defined environments, which could also assure that all involved animals have been in contact with the pathogenic agents or conditions. In addition, most of these studies have involved growing rabbits and it seems clear that different production phases (suckling, weaning and growing) might have to face different types of potential enteropathies. Therefore, mainly due to the heterogeneity and complexity of these types of disorders in rabbits and, in turn, the complications of the experimental procedures that should be designed, none of the studies that thus far investigated, at the rabbit genome level, DNA markers associated with this pathogenic condition, also attempted to obtain a precise characterization of the putative biological components (e.g., microbiota, viroma) involved as causative factors or derived consequence of the disorder. Only few studies reported information on the microbiota characterization of diarrhoea in rabbits linked to different feeding strategies in specific experimental designs (Chen et al., 2022; Wang, Fan, et al., 2022).

A few genome-wide association studies (GWAS) for several production traits have been recently carried out in rabbit after, also for this livestock species, genomic tools, including a single nucleotide polymorphism (SNP) array and a reference genome, have been made available to the scientific community (Bovo et al., 2021; Casto-Rebollo et al., 2020; Fontanesi et al., 2021; Laghouaouta et al., 2020; Liao et al., 2021; Mora et al., 2022; Sánchez et al., 2020; Sosa-Madrid, Hernández, et al., 2020; Sosa-Madrid, Santacreu, et al., 2020; Wang, Xie, et al., 2022; Yang et al., 2020). However, thus far, no GWAS have been carried out in this livestock species to identify DNA markers associated with resistance to any enteropathies.

In this study, with the aim to identify regions of the rabbit genome associated with resistance to a severe enteropathy of sucking rabbits, that occurred in a commercial selection husbandry system, we designed a balanced case and control genome-wide association study, integrated with F_{ST} analyses.

2 | MATERIALS AND METHODS

2.1 | Ethics statement

Animal samples used in this study were collected following the recommendation of directive 2010/632.1. Animals were not raised or treated in any way for this study, and samples were collected by the farmers during the routine

inspection of the animals. Only from naturally dead animals tissue samples were collected. The study has been conducted in a commercial meat rabbitry that followed standard husbandry procedures and approved veterinary practices.

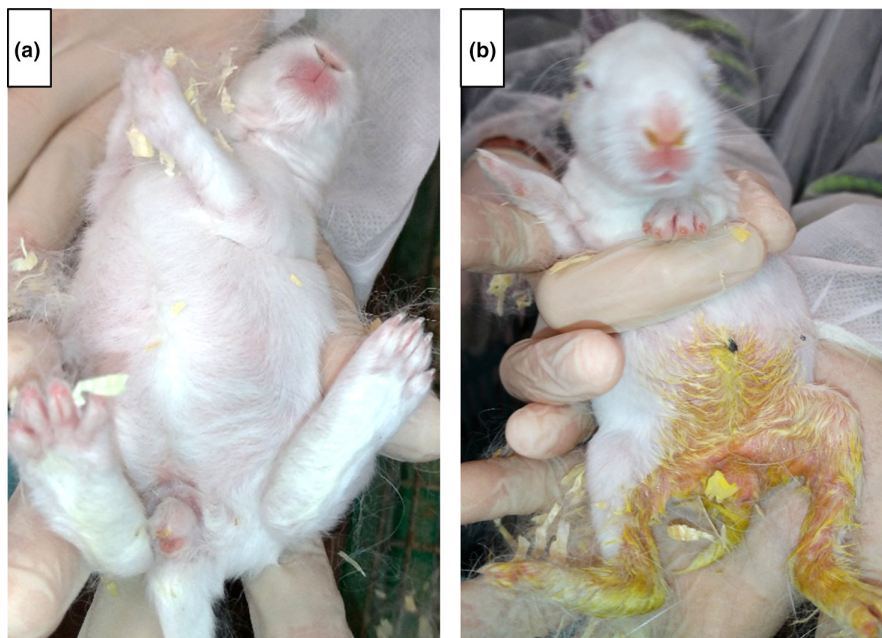
2.2 | Animals

This study included a population of 1016 suckling rabbits from 133 litters (obtained by crossing eight bucks with 136 does; only one buck per doe), each constituted by 6–8 suckling rabbits. Does did not receive any antibiotic treatment. Rabbits were from a nucleus of a commercial line, that is under selection to improve growth rate. All these rabbits were raised in the same farm (located in the North of Italy), in the same building and all litters were contemporaneous (obtained over 2 months, from March to April). Among these litters, a total of 45 litters were then chosen because they had both healthy suckling rabbits (without any external symptom of diarrhoea overall the suckling period) and diseased suckling rabbits (with very evident symptoms of diarrhoea before weaning), as shown in Figure 1. This within-litter disease-based classification of the suckling rabbits made possible to pair within-litter animals to control stratification and environmental factors in a case and control experimental design that included the following classes of phenotyped suckling rabbits: (i) completely healthy rabbits (n. 129), that were animals that reached the weaning age (30–35 days) without any symptoms of diarrhoea (2–4 rabbits for each litter), and considered to be resistant to diarrhoea; (ii) rabbits with severe symptoms of diarrhoea (n. 151) that did not reach the weaning age as they died before, due to this enteric problem (2–4 rabbits per litters), and considered to be susceptible to diarrhoea. In the classification of the suckling rabbits, in some of the same litters, we also identified animals (n. 42) that showed mild symptoms of diarrhoea in the suckling phase and that however reached the weaning age (0–2 within each of the 45 chosen litters).

2.3 | 16S rRNA gene sequencing of diarrhoea samples and bioinformatic analyses

The rectal content of five suckling rabbits of different litters (RAB1-5), that died from severe diarrhoea, was collected, and total DNA was extracted using the QIAamp DNA mini kit (Qiagen), following manufacturer's instructions. DNA was quality checked in a TBE 1% agarose gel after staining with 1× GelRed Nucleic Acid Gel Stain (Biotium Inc).

FIGURE 1 Extreme phenotypes of the pre-weaned rabbits considered in the study. (a) A resistant rabbit (without any external symptoms of diarrhoea overall the pre-weaning period); (b) a highly susceptible rabbit (with very evident external symptoms of diarrhoea before weaning). [Colour figure can be viewed at wileyonlinelibrary.com]



DNA concentration was measured using a Qubit 4.0 fluorimeter (Thermo Fisher Scientific). The bacterial 16S rRNA was amplified with the universal primer pairs and PCR conditions reported by Huse et al. (2008), by targeting the V3 region of the 16S gene: 338F: 5'-ACTCCTACGGGAGGCAGCAG-3' and 533R: 5'-TTACCGCGGCTGCTGGCAC-3'. Amplifications were performed on a SimpliAmp Thermal Cycler (Thermo Fisher Scientific). Reactions were run in a total volume of 20 μ L including KAPA HiFi HotStart Mastermix (Roche); 10 pmol of each primer; 40 ng of template DNA. Amplicons were quality checked in a TBE 2.5% agarose gel after staining with 1 \times GelRed Nucleic Acid Gel Stain (Biotium Inc.) and purified using standard isopropanol alcohol precipitation protocol. Libraries were prepared as previously described (Bovo et al., 2020). Sequencing of amplicons was carried out on an Ion S5-Ion Chef System (Thermo Fisher Scientific Inc).

Sequenced reads underwent to an initial quality check with the Torrent Suite v.5.8.0 (Thermo Fisher Scientific Inc). Then, only reads presenting both primers at the DNA ends were processed with PRINSEQ Lite v.0.20.4 (Schmieder & Edwards, 2011) as follows: (i) trimming of the 5'- and 3'-ends up to reaching a base with a Q > 20, (ii) exclusion of reads with a size < 20 bp and (iii) exclusion of reads with an average Q < 20. Taxonomic assignment was based on the Bacteria 16S RefSeq collection v.07/2023 (O'Leary et al., 2016) and the NCBI Taxonomy (Schoch et al., 2020). Reads were mapped over the 16S DNA database with BLAST+ v.2.7.1 (algorithm blastn, default parameters) (Camacho et al., 2009) and taxonomic assignment followed the Lowest Common Ancestor (LCA) approach. We considered as reasonably annotated reads having the following alignment scores: E-value ≤ 0.00001 , sequence coverage $\geq 95\%$ and a sequence identity $\geq 95\%$. At

least two reads were required to support the presence of a given bacteria. Sequencing data were evaluated by means of rarefaction curves as described by Bovo et al. (2020).

2.4 | Genotyping of the investigated rabbits

DNA of a total of 322 suckling rabbits (derived by summing up all rabbits of the 45 litters that were classified according to the absence and presence, and level of severity, of external symptoms of diarrhoea) was extracted from hair or ear tissue using the Wizard[®] Genomic DNA Purification kit (Promega Corporation). Animals were genotyped with the Affymetrix Axiom OrcunSNP Array (Affymetrix Inc.), which genotypes a total of 199,692 DNA markers, following the manufacturer's procedures. BLAST+ v.2.7.1 (Camacho et al., 2009) was used to map DNA markers to the OryCun2.0 reference genome (GCA_000003625.1). Markers assigned to more than one position or assigned to sex chromosomes were discarded. Quality control and data filtering were carried out with the Axiom[™] Analysis Suite, by retaining only markers located in autosomes and scaffolds, labelled as best recommended, presenting clearly separated genotype clusters, a minor allele frequency (MAF) > 0.05 and that were in Hardy-Weinberg equilibrium ($p > 0.0001$). A total of 45,404 very high-quality DNA markers were retained.

2.5 | Genome-wide association analyses

To take advantage from the extreme phenotypes related to resistance/susceptibility to diarrhoea observed within

litter (i.e., healthy suckling rabbits for the whole suckling period without any external symptoms of diarrhoea, considered to be resistant; suckling rabbits with heavy external signs of diarrhoea leading to death, considered to be susceptible), different genome-wide association analyses based on a case and control design were carried out. As reported in Table 1, these included: (i) GWAS1, that is the contrast between the two extreme groups (129 vs 151 rabbits), (ii) GWAS2, that is the contrast between a group constituted by merging severely affected rabbits with mildly affected rabbits (n. 151 + 42) against resistant rabbits (n. 129) and (iii) GWAS3, that is the contrast between a group constituted by merging resistant rabbits with mildly affected rabbits (n. 129 + 42) against severely affected rabbits (n. 151). The following general linear mixed model was used:

$$y = x\beta + g + e$$

where y ($n \times 1$) is a vector containing the phenotype (as defined in the three scenarios described above: 0, controls = resistant to diarrhoea; 1, cases = susceptible to diarrhoea) for the n^{th} animal, x ($n \times 1$) is the vector containing genotypes for the i^{th} DNA marker, β is the additive fixed effect of the i^{th} DNA marker on the phenotype, $g \sim N(0, \sigma_g^2 K)$ is a multivariate Gaussian polygenic effect, with covariance matrix proportional to the centred genomic relatedness matrix K ($n \times n$) and $e \sim N(0, \sigma_e^2 I)$ is a multivariate Gaussian vector of uncorrelated residuals. The assessment of the association was obtained by testing the null hypothesis $H_0: \beta = 0$ (Wald test). Models were fitted with GEMMA v. 0.98 (Zhou & Stephens, 2012). The Bonferroni corrected significance level threshold equal to a nominal value of 0.05 was used to define significant markers. A marker was declared suggestively associated with the phenotype if it had a $p < 5.0 \times 10^{-05}$. GEMMA was used to estimate the genomic heritability (h^2_G). Genomic control inflation factors (λ_{GC}), Quantile-Quantile plots (QQ plots) and Manhattan plots were generated in R v.4.2.2 (R Core Team, 2022).

TABLE 1 Details of the genome-wide association studies (GWAS) for diarrhoea in the suckling rabbits.

GWAS approach	Groups of rabbits	No. of animals	λ_{GC}^a	h^2_G (s.e.) ^b
GWAS1	Severe symptoms of diarrhoea vs. unaffected (without any symptoms of diarrhoea)	151 + 129 (280)	1.04	0.21 (0.10)
GWAS2	Affected (severe symptoms + mild symptoms of diarrhoea) vs. unaffected (without any symptoms of diarrhoea)	193 + 129 (322)	1.02	0.19 (0.10)
GWAS3	Severe symptoms of diarrhoea vs. (unaffected + mild symptoms of diarrhoea)	151 + 171 (322)	1.04	0.19 (0.10)

^aGenomic control inflation factor.

^bGenomic heritability estimated from SNP data. The standard error is reported in parentheses.

2.6 | F_{ST} analyses

Wright's Fixation Index (F_{ST}) was calculated for each SNPs in the pairwise comparison between the resistant group of suckling rabbits and the susceptible group of suckling rabbits (with the same combinations defined above for the GWAS analyses: F_{ST1} , F_{ST2} and F_{ST3}). F_{ST} values were computed in PLINK 1.9 (Chang et al., 2015) that implements the Weir and Cockerham (1984) method. We considered as outliers those markers having a F_{ST} value equal or above the 99.98th percentile of the related distribution (top 11 SNPs). Manhattan plots were generated in R v.4.2.2 (R Core Team, 2022).

2.7 | Gene annotation and haploblock analysis

Annotated genes close to relevant DNA markers (± 500 kb flanking regions) were retrieved from the OryCun2.0 NCBI's GFF file (NCBI *Oryctolagus cuniculus* Annotation Release 102). The functional relevance of the genes was evaluated based on a detailed analysis of the scientific literature and Gene Cards information (Stelzer et al., 2016). Enrichr (Chen, Tan, et al., 2013) was used in the gene enrichment analysis that was performed with the following databases: GWAS Catalog 2023 (<https://www.ebi.ac.uk/gwas/>), KEGG Human database 2021 (KEGG, <http://www.kegg.jp/>), MGI mammalian phenotype level 4 (https://www.informatics.jax.org/vocab/mp_ontology), and the biological process branch of gene ontology (GO:BP 2023; <http://geneontology.org/>). Enrichr input was the whole set of genes ($n = 69$) located ± 500 kb from the top markers identified with different methods and reported in Table 2. We considered statistically enriched terms having: (i) at least two genes of the input set related to at least two different genome regions and (ii) an adjusted $p < 0.05$.

Linkage disequilibrium (LD) was studied with Haploview (Barrett et al., 2005) using default parameters.

TABLE 2 Summarized results obtained combining the genome-wide association studies (GWAS1-3) and F_{ST} analyses (F_{ST1-3}).

Analysis ^a	OCU ^b	Marker	Position	Mi/Ma ^c	Pop ^d	R ^e	S ^f	β^g	P ^h	F_{ST} value ⁱ	Genes
GWAS1, GWAS3, F_{ST1}, F_{ST3}	2	AX-147110011	166,302,108	G/A	0.07	0.13	0.02	-0.44	* 3.35×10^{-08}	§0.076	RAD51AP2, SMC6, VSNL1, GEN1
GWAS1, GWAS3, F_{ST1}	3	AX-147151286	140,492,290	G/A	0.08	0.13	0.03	-0.45	* 4.39×10^{-08}	§0.068	TRMT12, KIAA0196, NDUFB9, LOC100353158, TATDNI, TMEM65, ZNF572, MTSSL, NSMCE2, RNFI39, SQLE
GWAS1, GWAS3	7	AX-147178054	162,786,466	T/C	0.06	0.11	0.02	-0.41	* 9.05×10^{-07}	-	EPHA4
GWAS1, GWAS3, F_{ST1}, F_{ST2}	12	AX-147124755	29,704,696	G/A	0.30	0.40	0.23	-0.28	§ 4.64×10^{-07}	§0.064	KIF6, LRFN2, MOCSI, DAAM2
GWAS1, GWAS3, F_{ST1}, F_{ST2}	12	AX-147169968	30,469,270	C/A	0.23	0.33	0.16	-0.30	§ 4.95×10^{-07}	§0.072	OARD1, LRFN2, LOC100348238, UNC5CL, TREM12, APOBEC2, NFYA, TREML1, LOC100348748, TSPO2
GWAS1, GWAS3, F_{ST1}, F_{ST3}	13	AX-147129897	31,348,345	C/T	0.08	0.14	0.03	-0.41	* 1.42×10^{-07}	*0.082	LOC100337909, TOMM40L, HSPA6, UFC1, CFAPI26, PPOX, LOC100356569, USP21, ADAMTS4, FCER1G, PCP4L1, APOA2, B4GALT3, FCRLA, FCRLB, LOC100359306, FCGR2A, LOC100338913, DEDD, DUSP12, OLFML2B, NRII3, NDUFS2, SDHC, ATF6, MPZ
(GWAS2), F_{ST2}	16	AX-147054369	67,591,685	G/A	0.19	0.27	0.14	-0.25	1.91×10^{-06}	0.054	KISS1, ZC3H11A, PLEKHA6, NFASC, SOX13, LRRN2, PIK3C2B, GOLTI1A, PPP1R15B, REN, ETNK2, MDM4, SNRPE
GWAS1, GWAS3, F_{ST1}, F_{ST3}	NW_003160554.1	AX-147143772	18,430	G/A	0.35	0.45	0.26	-0.28	* 9.50×10^{-09}	*0.092	-

Note: Only the top markers in the region ± 500 kb (and related annotation) are reported. All results are reported in Tables S5 and S6.

^aGWAS1/ F_{ST1} : severely affected rabbits against the unaffected rabbits; GWAS2/ F_{ST2} : affected rabbits (severe and mild diarrhoea) against the unaffected rabbits (severe and mild diarrhoea) against the unaffected rabbits; GWAS3/ F_{ST3} : severely affected rabbits against resistant (unaffected and mild diarrhoea) rabbits. In genome-wide association studies, top significant markers and top suggestively significant markers (within brackets) are listed for the corresponding genome regions also identified in the F_{ST} analyses.

^bRabbit chromosome.

^cMinor/Major alleles.

^dFrequency of the minor allele in the considered rabbit population (322 rabbits).

^eFrequency of the minor allele in the resistant rabbits.

^fFrequency of the minor allele in the susceptible rabbits.

^gRegression coefficient of the genome-wide association studies: when information was confirmed by GWAS1 and GWAS3, regression coefficient was reported for the most significant analysis. A negative value indicates that the minor allele is associated with disease resistance.

^hP at the Wald test (GEMMA) for the most significant analysis in the genome-wide association studies (§: GWAS1; *: GWAS3).

ⁱThe highest F_{ST} value was reported (§: F_{ST1} ; *: F_{ST2}).

3 | RESULTS

3.1 | Frequency of diarrhoea in the monitored suckling rabbit population

Among the 133 monitored litters, accounting a total of 1016 suckling rabbits, on average three rabbits per litter were healthy (without any visible external symptoms of diarrhoea over all the suckling period; [Figure 1](#)) and five rabbits per litter had signs of diarrhoea. A total of 74 litters (54%) had 100% of severely affected suckling rabbits with clear signs of diarrhoea ([Figure 1](#)), that died before reaching the weaning age due to this pathogenic condition (100% mortality). Fifteen litters (11%) did not have any sick animals (animals without any evident visible external symptoms of diarrhoea till weaning) whereas the remaining 47 litters (35%) had at least one affected rabbit. Considering the whole population, the distribution of the percentage of affected suckling rabbits per litter is given in [Figure S1](#).

We then identified a total of 45 litters that had each a balanced number of severely affected animals (that died before weaning) together with a similar number of unaffected individuals (for a total of 151 and 129 rabbits, respectively). All suckling rabbits within the same litter shared the same mother and environmental conditions, which may be the source of shared pathogens or pathogenic elements that would trigger diarrhoea in the susceptible animals. In some of these litters, we also noted the presence of a total of 42 additional animals that had mild symptoms of diarrhoea (i.e., with an intermediate phenotype), which did not prevent them to reach the weaning age.

3.2 | Characterization of the diarrhoea microbiota

To obtain a first characterization of the microbiota involved in the pathogenic condition or that could be the result of this pathogenic state, we analysed the rectal content of five suckling rabbits of different litters (RAB1-5) that died before weaning and that had severe signs of diarrhoea. About 371,000–552,000 high-quality reads per sample were obtained ([Table S1](#)). On average, taxonomic assignment was successful for 97% of the sequenced reads despite the stringent alignment parameters (sequence coverage $\geq 95\%$ and a sequence identity $\geq 95\%$). Microbial diversity was well captured considering that rarefaction curves reached the plateau for all the analysed samples ([Figure S2](#)). The list and abundance of organisms identified in the samples, annotated irrespectively to the taxonomic ranks, and supported by at least two reads, are reported in [Table S2](#). A total of 65 bacterial families and

160 genera were identified, in line with what was previously reported in another microbiota analysis in rabbits (Hu et al., 2021). When considering only families and genera supported by at least 2 reads, numbers decreased to 50 and 114, respectively ([Table S3](#) and [Table S4](#)). The most abundant family was Clostridiaceae, followed by Moraxellaceae and Enterobacteriaceae ([Figure 2](#)). Clostridiaceae also appeared to be a common feature of all analysed samples (24%–57% of the 16S rRNA gene profiles) and genera (24%–63% of the 16S rRNA gene profiles) whereas the pattern distribution of the other bacterial families was not consistent across the investigated rabbits.

3.3 | Genomic regions associated with resistance/susceptibility to diarrhoea

In the first step, to maximize the phenotypic differences in the case and control association study, we considered only the severely affected suckling rabbits against the paired unaffected rabbits of the same litter (GWAS1). We then also run case and control genome-wide association analyses considering alternatively the suckling rabbits having the intermediate phenotype (i.e., mild diarrhoea) within the group of susceptible animals (GWAS2) or within the group of resistant animals (GWAS3).

Manhattan plots obtained by these three genome-wide association studies are shown in [Figure 3a–c](#). In all three analyses, the genomic control inflation factor was close to one ([Table 1](#)), suggesting that the experimental design and adopted model properly corrected for population stratification. QQ plots of these analyses provided similar information ([Figure S3](#)). In the three genome-wide association studies, estimated genomic heritability was in the range of 0.19–0.21, with a standard error in the range of 0.09–0.10 ([Table 1](#)).

In GWAS1, we identified a total of six significant genomic regions located on five assembled rabbit chromosomes (OCU), including OCU2, OCU3, OCU7, OCU12, OCU13, and one genome scaffold (NW_003160554.1; [Table 2](#) and [Table S5](#)). In this analysis, the most significant marker was on OCU3 ($P = 2.98 \times 10^{-07}$). Suggestively significant markers were identified in other eight chromosomes ([Table S5](#)). All the significant genomic regions were confirmed in GWAS3 ([Table 2](#) and [Table S5](#)), where, for several markers, the level of significance increased, potentially suggesting that including rabbits with mild signs of diarrhoea in the group of resistant rabbits could better describe the genetic underlying components of resistance to diarrhoea in suckling rabbits. In GWAS3, the most significant marker (that also was the most significant across all three genome-wide association studies) was in the unassembled scaffold ($p = 9.50 \times 10^{-09}$). Some of the

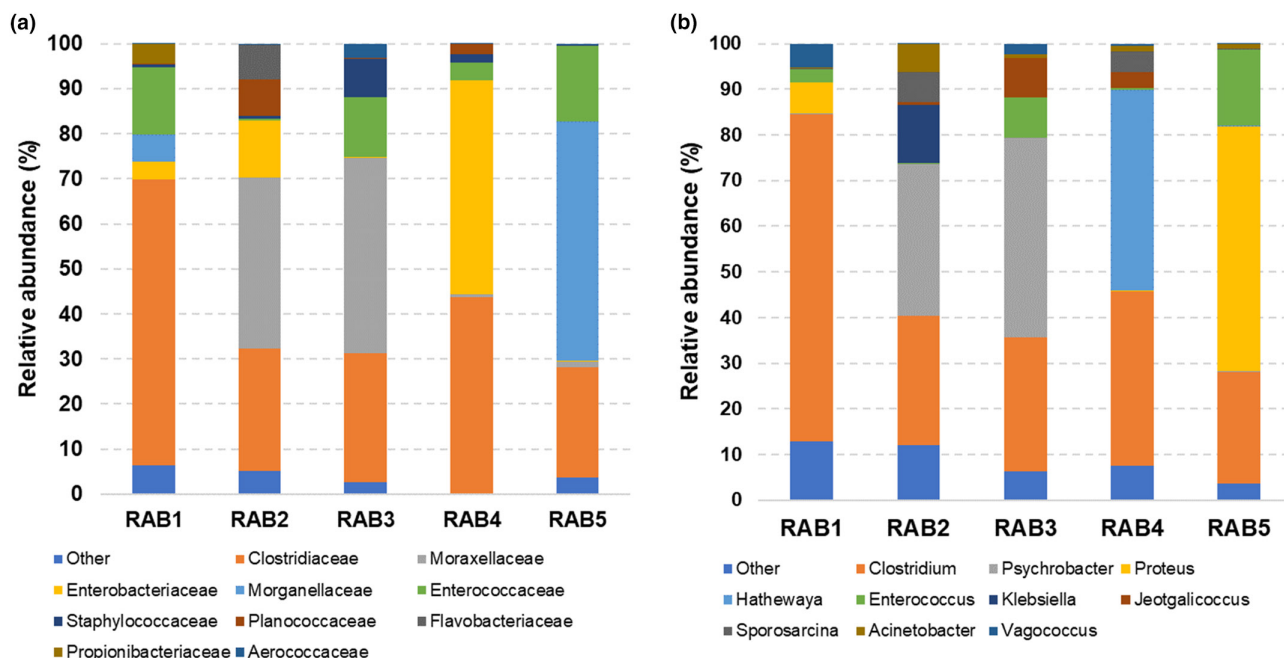


FIGURE 2 Bacterial 16S rRNA gene (V3 region) sequencing results of the content of rectum of five rabbits affected by severe diarrhoea. (a) Relative abundance plot of bacterial families; (b) relative abundance plot of bacterial genera. Plots show the ten most abundant taxa; the remaining taxa are grouped under the label “Other.” The full list of families and genera are reported in [Tables S3](#) and [S4](#), respectively. [Colour figure can be viewed at [wileyonlinelibrary.com](#)]

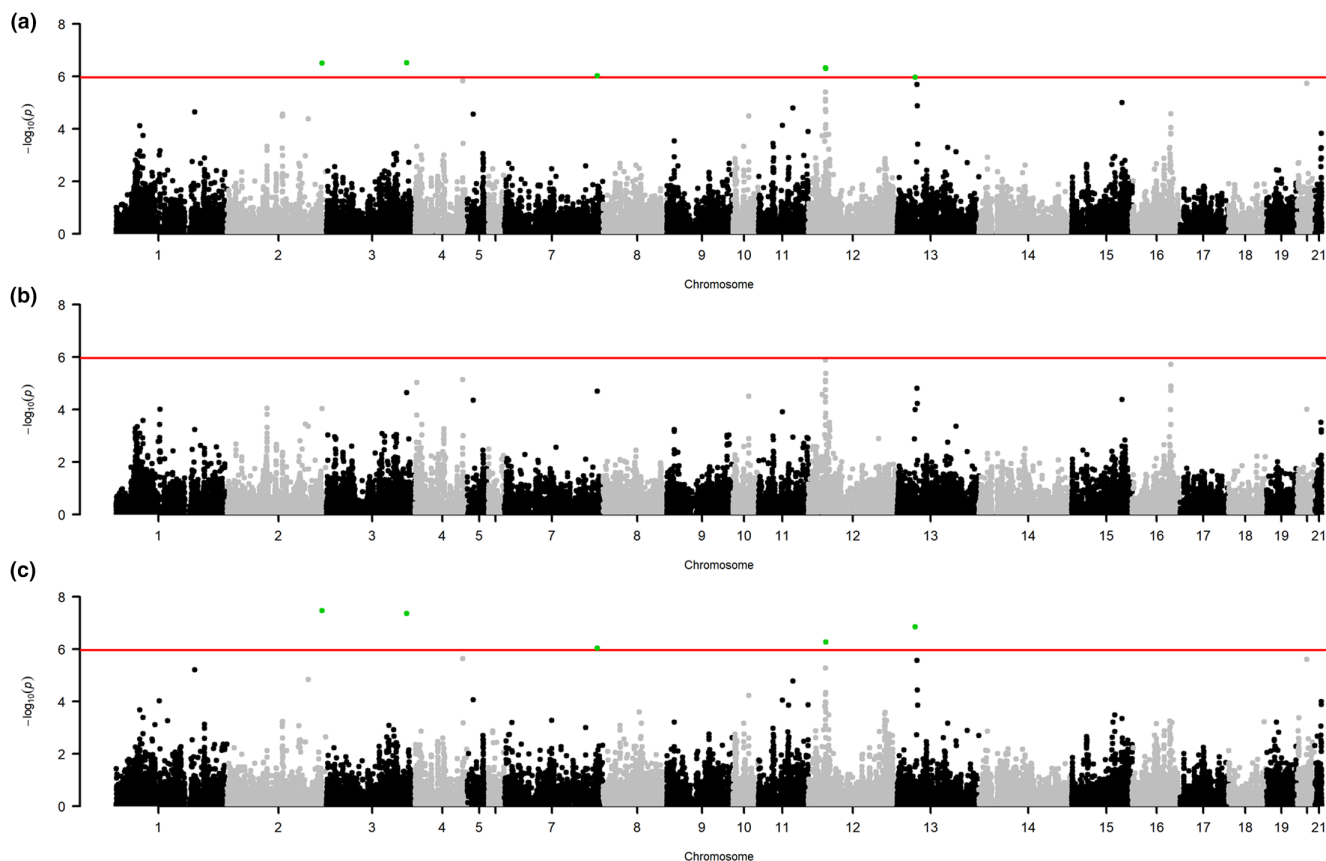


FIGURE 3 Manhattan plots of the genome-wide association studies (GWAS1-3) for diarrhoea in the suckling rabbits. (a) GWAS1: severely affected rabbits (susceptible) against the unaffected rabbits (resistant). (b) GWAS2: affected rabbits (with severe and mild symptoms of diarrhoea) against the unaffected rabbits (without any symptoms of diarrhoea). (c) GWAS3: severely affected rabbits against resistant (without any symptoms and with mild symptoms of diarrhoea) animals. Each dot represents a SNP. The red line identifies the significance threshold. [Colour figure can be viewed at [wileyonlinelibrary.com](#)]

suggestively significant regions identified in GWAS1 were also present in GWAS3 (OCU1, OCU2, OCU4, OCU11 and OCU20; Table S5). None of the significant regions that emerged in GWAS1 and GWAS3 were also significant in GWAS2, even if some regions remained just below the significance threshold, including another evident peak on OCU16, which could just be noted (even if far below the significance threshold), only in GWAS1 (Figure 3a–c; Table S5).

F_{ST} analyses carried out considering the same three groups of animals defined in the genome-wide association studies (F_{ST1} , F_{ST2} and F_{ST3}) obtained similar results to those already reported for the corresponding genome-wide association studies (Figure 4a–c; Table S6). Table 2 includes information on the match of the results between the genome-wide association studies and the F_{ST} analyses. The highest F_{ST} value was 0.092, for a marker in the un-assembled scaffold NW_003160554.1 (F_{ST3}), followed by a value of $F_{ST}=0.082$ for a marker on OCU13 (F_{ST3}), pointing out a low/medium genetic differentiation between the two extreme groups at all genomic positions. This F_{ST}

peak was in the correspondence of the same region identified in GWAS1 and GWAS3 (Table 2 and Table S6). One region that clearly emerged in F_{ST2} , which however was just below the significance threshold in GWAS2, was on OCU16, as we already mentioned above.

Combining all these analyses and comparisons (i.e., GWAS1–3 and F_{ST1} –3), three main multi-marker peaks emerged on OCU12, OCU13 and OCU16. Results of the haploblock analyses of these regions are reported in Figure S4–S6. The top associated marker on OCU12 is included in the haploblock that encompasses the *dishevelled associated activator of morphogenesis 2* gene (*DAAM2*; Figure S4). This marker had a high LD ($r^2 > 0.88$) with the marker AX-147105744, located within the closest gene *molybdenum cofactor synthesis 1* (*MOCS1*). The roles of these genes thus far described in the literature and of those of the other close genes in this region (Table 2) do not point out any direct putative functional involvements in the described pathogenic condition.

The top associated SNP on OCU13 is located within the activating transcription factor 6 (*ATF6*, Figure S5) gene,

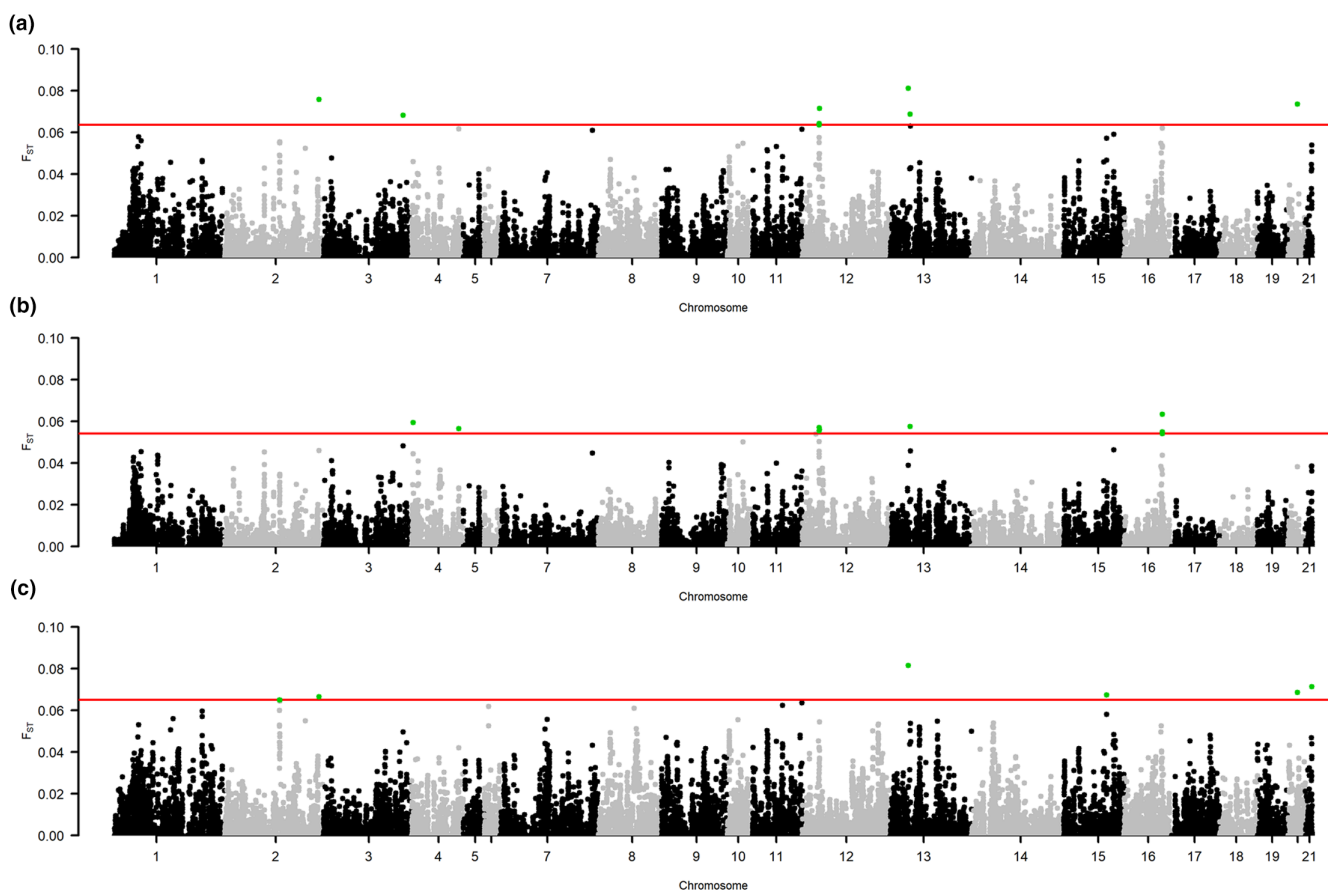


FIGURE 4 Manhattan plots of the F_{ST} analyses for diarrhoea in the suckling rabbits. (a) F_{ST1} : severely affected rabbits (susceptible, with severe symptoms of diarrhoea) against unaffected rabbits (resistant, without any symptoms of diarrhoea); (b) F_{ST2} : affected rabbits (with severe and mild symptoms of diarrhoea; susceptible) against the unaffected rabbits (resistant, without any symptoms of diarrhoea); (c) F_{ST3} : severely affected rabbits (susceptible, with severe symptoms of diarrhoea) against resistant (unaffected and with mild symptoms of diarrhoea) animals. Each dot represents a single nucleotide polymorphism. The red line identifies the F_{ST} threshold (99.98th percentile). [Colour figure can be viewed at wileyonlinelibrary.com]

associated in humans with leukocyte count. This region also encompasses several other genes that encodes members of a family of immunoglobulin Fc receptor genes found on the surface of many immune response cells and acting as adapter proteins involved in transmembrane signalling activity, mediating inflammatory signalling, and in the process of phagocytosis and clearing of immune complexes (*Fc epsilon receptor Ig*, *FCER1G*; *Fc receptor-like A*, *FCRLA*; *Fc receptor-like B*, *FCRLB*; *Fc gamma receptor IIa*, *FCGR2A*). The role of these genes might be very relevant in determining resistance/susceptibility to the investigated enteropathy in rabbits.

The top marker identified on OCU16 was part of a haploblock including the phosphatidylinositol-4-phosphate 3-kinase catalytic subunit type 2 beta (*PIK3C2B*) gene (Figure S6). *PIK3C2B* plays a role in signalling pathways involved in several mechanisms, including intracellular protein trafficking and translocation of proteins to membranes. The marker had moderate LD ($r^2 > 0.53$) with the marker AX-147156372, located close to the other groups of genes (*REN*; ENSOCUG00000033800 orthologous to *KISS1*; ENSOCUG00000028025, orthologous to *ETNK2*) whose known functional roles do not indicate obvious and direct involvement in the investigated disorder.

Functional enrichment analysis did not return any significant enriched terms or processes when using annotation information for genes included in all highlighted genomic regions. We also tested only those genes present in the three regions (OCU12, OCU13 and OCU16) where main peak markers were identified; also in this case, the queried databases and resources did not return any enriched term.

4 | DISCUSSION

Enteropathies, which mainly affect suckling and growing rabbits, are considered among the most important challenges that the rabbit meat industry is facing. These pathogenic conditions are responsible for high morbidity and mortality rates in affected rabbitries, causing problems on the sustainability of the rabbit farming industry (Solans et al., 2019). Selection and breeding to increase genetic resistance to enteropathies could be part of the solution of these problems. However, the collection of useful phenotypes for this aim encounters some practical difficulties. Simple clinical symptoms of enteropathies in commercial populations (e.g., diarrhoea, bloated abdomen or death of the animals) are the only phenotypes that can be routinely recorded, without identifying any clear pathogenic origin and without establishing all potential co-factors. Therefore, the complexity, heterogeneity and multifactorial causative agents determining enteropathies in rabbits

and, in turn, the low heritability of the related traits, make very difficult to establish effective breeding programmes aimed to increase resistance to this pathogenic condition (Garreau et al., 2012, 2021; Gunia et al., 2015; Shrestha et al., 2020). Similar problems related to the records of useful phenotypes are also encountered in planning experimental designs where disease states could be associated with variability at the genome level with the aim to dissect the genetic factors determining resistance/susceptibility to enteropathies in meat rabbits.

In this study, we took advantage from the presence, in the same litters, of both suckling rabbits showing clear signs of severe diarrhoea and others without any signs of diarrhoea (or just mild diarrhoea) till weaning age. Within this suckling rabbit population, we nested case and control studies based on genotyped markers covering the whole rabbit genome. Suckling rabbits were therefore classified as resistant and susceptible to a severe enteropathy, using as proxy the external symptom of severe diarrhoea. This simple approach, in this paired design, however, tended to increase heritability of the investigated condition. Genomic heritability of resistance/susceptibility to severe diarrhoea estimated in this experimental design ($h^2_G = 0.19-0.21 \pm 0.10$) was higher than the heritability of enteropathies estimated in growing rabbits using pedigree-based information ($h^2 = 0.08 \pm 0.02$; Garreau et al., 2008). When we run other genome-wide association analyses with a linear mixed model that included all three classes of diarrhoea symptoms (unaffected, mildly affected and severely affected) taking into account all available fixed factors (litter, bucks, etc.), genomic heritability was almost zero (data not shown). These results suggest that the case and control study designed within litter was able to capture a quite relevant fraction of genetic variance that could not be preserved in any other models due to the complexity of the environmental factors outside litter that are also those that in most studies complicated the genetic analyses of resistance to enteropathies and other related diseases in rabbits.

The high incidence and mortality that we observed in our study is similar to what was reported in previous studies in other growing rabbit populations for similar enteropathies or related problems (Garreau et al., 2008; Solans et al., 2019), confirming that when rabbitries experience outbreaks of these types of disorders, the economic impact is usually very relevant. As next steps, we will further evaluate the incidence of enteropathies in the growing phase of the same commercial meat line used in this study, the heritability of this condition in the growing animals and the genetic correlation with other production traits.

The detailed characterization of the rabbit enteropathies is usually very complicated due to the potential

heterogeneity and co-presence of multiple causative factors, which would need detailed necropsy, histological preparations and several analytical methods to detect and quantify multiple potential pathogens. These are the main reasons why thus far, despite several attempts, it has not been possible to clarify the biological components and agents of enteropathies and related disorders in rabbits. In the field conditions in which we nested our study, it was not possible to obtain specimens from all involved suckling rabbits (as the healthy animals could not be sampled); therefore, we opted for a first characterization of the diarrhoea microbiota of the deceased rabbits, sampled from different litters, that may correspond to the final stage of the disease. Despite the observed heterogeneity of the microbiota profiles across samples, also reported within experimental design in other studies (Chen et al., 2022; Wang, Fan, et al., 2022), the most consistent bacterial family and genus across all investigated specimens was Clostridiaceae (24%–57% of the reads of the 16S rRNA gene profiles) and *Clostridium* (24%–66% of the reads of the same profile), respectively, which might include pathogenic agents or might provide a peculiar signature of the resulted disease status. The genus *Clostridium* has been reported by the studies of Velasco-Galilea et al. (2018) and Hu et al. (2021) among the most abundant genera found in samples collected from the large intestine of healthy rabbits; therefore, it is possible that most of the species of this genus constitutes the normal cecum cellulose-degrading symbiotic microorganisms. It is however well known that some *Clostridium* species, including *C. spiroforme* and *C. piliforme*, can cause gastrointestinal disorders in rabbits (e.g., enteritis, enterotoxemia), with severe diarrhoea and high mortality (Oslesbee & Lord, 2020). It is also interesting to note that Bäuerl et al. (2014) reported a greater presence of this genus in caecal microbiota of adult rabbits affected by epizootic rabbit enteropathy (ERE) than in healthy animals. It could be possible that the pattern we observed in rabbit with severe diarrhoea could resemble a general situation of rabbit enteropathies, even if we did not have the possibility to verify the microbiota profiles of the healthy suckling rabbits and obtain a precise comparative analysis between cases and controls. Therefore, other studies will be needed to further explore the role of *Clostridium* species in determining the observed enteropathy in the suckling rabbits of the investigated meat line.

The applied genomic analyses, that were based on the within litter case and control design, were able to identify a few genomic regions associated with the resistance/susceptibility of the enteropathies that occurred in suckling rabbits, for which symptoms of diarrhoea were used as proxy. The results were obtained combining different genome-wide association studies and F_{ST} analyses. With these two genomic approaches, results derived from the

same groups of rabbits (GWAS1-3 and F_{ST} 1-3) were almost completely overlapping. This could be expected as genome-wide association studies and F_{ST} analyses in our experimental design rely on allele frequency differences between the contrasted groups of animals. Combining the three genome-wide association studies and the corresponding F_{ST} analyses, a total of eight genomic regions (on OCU2, OCU3, OCU7, two on OCU12, OCU13, OCU16 and on an unassembled scaffold) had significant SNPs and/or markers that trespassed the F_{ST} percentile distribution. Among these regions, three main peaks of SNPs were identified on three different chromosomes (OCU12, OCU13 and OCU16). The current available annotation of these genomic regions identified interesting candidate genes on OCU13: *FCER1G*, *FCRLA*, *FCRLB* and *FCGR2A* are involved in the biological mechanisms associated with the immune innate systems. These genes encode members of a family of immunoglobulin Fc receptors that are usually located on the surface of many immune response cells, in particular B cells. These receptors are involved in several different mechanisms, including antibody-dependent cell cytotoxicity, phagocytosis, allergic reactions, and transcytosis of immunoglobulins via their ability to bind immunoglobulin (Ig) constant regions (Ben Mkaddem et al., 2019; Bournazos et al., 2020). According to the role of these genes included in one of the major QTL we identified in this study, it is tempting to speculate that the resistance of some of the suckling rabbits and the susceptibility of others to an enteropathy form occurring in the pre-weaned period might be related to the possibility to transport IgG and enhance or not immunity derived from colostrum or through the fetal exchange at the placental level. This hypothesis could also justify the potential maternal effects on enteropathies, as demonstrated in other studies (García-Quirós et al., 2014). Further studies are needed to demonstrate the derived inferences that we based on the interesting results that pointed out on a putative relevant role of the genes included in the QTL located on OCU13.

From the obtained results, it is also clear that the genetic factors involved in the resistance to this enteropathy might be more complex, where more genes (most of which not well characterized and with few information on their roles) might be involved. Other two main QTL regions, on OCU12 and OCU16, emerged from this study and a few additional significant markers were also observed on other chromosomes. The most significant marker, however, was located in an unassembled scaffold, which, unfortunately, does not contain any annotated gene. The currently available *Oryctolagus cuniculus* reference genome (OryCun2.0) should be substantially improved, as it still contains many other unassembled portions and gaps that prevent, in some cases, the extraction of important genomic information

derived by genome-wide association or signature of selection studies (Ballan et al., 2022; Fontanesi et al., 2021). It is also interesting to note that none of the genes for which markers have been associated with non-specific digestive disorders in growing rabbits of a few Chinese lines (Chen, Zhang, et al., 2013; Fu et al., 2014, 2015; Li et al., 2018; Liu et al., 2013, 2017; Yang et al., 2013; Zhang et al., 2011; Zhang, Zhang, Chen, et al., 2013; Zhang, Zhang, Peng, et al., 2013) were included or were close to the genomic regions where we identified significant or suggestively significant SNPs. These results suggest (i) that different types of disorders were considered in these previous studies or (ii) that different rabbit lines might have different genetic backgrounds that would not provide the same genetic information in association studies or (iii) that the simple candidate gene approaches that was applied in the previous studies did not have the possibility to obtain replicable results in other contexts.

5 | CONCLUSIONS

Breeding to increase disease resistance is becoming fundamental to further support the development of a sustainable meat rabbit production system, where the incidence of the economic losses derived from many diseases is very relevant. At the same time, selection plans to pursue these objectives can reduce the use of antibiotics and improve animal welfare. The results obtained in this study demonstrated that resistance to an enteropathy occurring in suckling rabbits is in part genetically determined and can be dissected at the genomic level. The experimental design that we applied in field conditions based on a commercial population increased the probability to identify genomic regions associated with the resistance to diarrhoea, used as proxy of the effect of the investigated enteropathy. Based on this field-based experiment, this study provided for the first time a genome-wide association analysis that identified a few significant markers and genomic regions associated with the considered phenotype. We are working to implement the associated markers in the selection plans of the investigated meat rabbit line, increasing the frequency of the favourable alleles of the three main QTL regions. Additional studies are also needed to further refine and confirm the obtained results and evaluate the hypothesis of the potentially relevant role of members of a family of immunoglobulin Fc receptor genes on resistance to enteropathies in suckling rabbits.

AUTHOR CONTRIBUTION

L.F. designed the study, interpreted the results, and obtained funding. L.F. and S.B. wrote the paper. S.B. and G.S. conducted data and bioinformatic analyses. D.F. and A.F. provided samples and data. A.R., V.T. and F.B.

contributed to data production and laboratory analyses. All authors read and approved the submitted version.

ACKNOWLEDGEMENTS

The study was funded by the Martini Group spa (CunGenomics project) and by the University of Bologna RFO2021 funds.

CONFLICT OF INTEREST STATEMENT

The authors declare that they do not have any competing interests.

DATA AVAILABILITY STATEMENT

Genotyping data reported in this work can be shared after signature of an agreement on their use with University of Bologna. Sequencing data (16S rRNA) are available in the EMBL-EBI European Nucleotide Archive (ENA) repository under the study accession PRJEB64894.

ORCID

Samuele Bovo  <https://orcid.org/0000-0002-5712-8211>

Anisa Ribani  <https://orcid.org/0000-0001-6778-1938>

Giuseppina Schiavo  <https://orcid.org/0000-0002-3497-1337>

Valeria Taurisano  <https://orcid.org/0000-0001-5349-1606>

Francesca Bertolini  <https://orcid.org/0000-0003-4181-3895>

Luca Fontanesi  <https://orcid.org/0000-0001-7050-3760>

REFERENCES

- Agnoletti, F., Lenarduzzi, M., Ricci, A., & Marotta, A. (1999). Isolation of *Salmonella* spp. From Italian commercial rabbitries. *Cahiers Options Méditerranéennes*, 41, 189–193.
- Ballan, M., Bovo, S., Schiavo, G., Schiavitto, M., Negrini, R., & Fontanesi, L. (2022). Genomic diversity and signatures of selection in meat and fancy rabbit breeds based on high-density marker data. *Genetics Selection Evolution*, 54, 3.
- Barrett, J. C., Fry, B., Maller, J. D. M. J., & Daly, M. J. (2005). Haploview: Analysis and visualization of LD and haplotype maps. *Bioinformatics*, 21, 263–265.
- Bäuerl, C., Collado, M. C., Zúñiga, M., Blas, E., & Pérez Martínez, G. (2014). Changes in cecal microbiota and mucosal gene expression revealed new aspects of epizootic rabbit enteropathy. *PLoS One*, 9, e105707.
- Ben Mkaddem, S., Benhamou, M., & Monteiro, R. C. (2019). Understanding fc receptor involvement in inflammatory diseases: From mechanisms to new therapeutic tools. *Frontiers in Immunology*, 10, 811.
- Bishop, S. C., & Woolliams, J. A. (2014). Genomics and disease resistance studies in livestock. *Livestock Science*, 166, 190–198.
- Bournazos, S., Gupta, A., & Ravetch, J. V. (2020). The role of IgG fc receptors in antibody-dependent enhancement. *Nature Reviews Immunology*, 20, 633–643.
- Bovo, S., Schiavo, G., Utzeri, V. J., Ribani, A., Schiavitto, M., Buttazzoni, L., Negrini, R., & Fontanesi, L. (2021). A genome-wide association

- study for the number of teats in European rabbits (*Oryctolagus cuniculus*) identifies several candidate genes affecting this trait. *Animal Genetics*, 52, 237–243.
- Bovo, S., Utzeri, V. J., Ribani, A., Cabbri, R., & Fontanesi, L. (2020). Shotgun sequencing of honey DNA can describe honey bee derived environmental signatures and the honey bee hologenome complexity. *Scientific Reports*, 10, 9279.
- Camacho, C., Coulouris, G., Avagyan, V., Ma, N., Papadopoulos, J., Bealer, K., & Madden, T. L. (2009). BLAST+: Architecture and applications. *BMC Bioinformatics*, 10, 421.
- Carman, R. J., & Borriello, S. P. (1984). Infectious nature of *clostridium spiroforme*-mediated rabbit enterotoxaemia. *Veterinary Microbiology*, 9, 497–502.
- Casto-Rebollo, C., Argente, M. J., García, M. L., Pena, R., & Ibáñez-Escriche, N. (2020). Identification of functional mutations associated with environmental variance of litter size in rabbits. *Genetics Selection Evolution*, 52, 22.
- Chang, C. C., Chow, C. C., Tellier, L. C., Vattikuti, S., Purcell, S. M., & Lee, J. J. (2015). Second-generation PLINK: Rising to the challenge of larger and richer datasets. *GigaScience*, 4, 7.
- Chen, E. Y., Tan, C. M., Kou, Y., Duan, Q., Wang, Z., Meirelles, G. V., Clark, N. R., & Ma'ayan, A. (2013). Enrichr: Interactive and collaborative HTML5 gene list enrichment analysis tool. *BMC Bioinformatics*, 14, 128.
- Chen, S. Y., Zhang, W. X., Zhang, G. W., Peng, J., Zhao, X. B., & Lai, S. J. (2013). Case-control study and mRNA expression analysis reveal the MyD88 gene is associated with digestive disorders in rabbit. *Animal Genetics*, 44, 703–710.
- Chen, Y., Wang, J., Fan, H., Xia, S., Zhao, K., Chen, G., & Li, Y. (2022). The multi-omics analysis revealed microbiological regulation of rabbit colon with diarrhea fed an antibiotic-free diet. *Animals*, 12, 1497.
- De Rochambeau, H., Licois, D., Gidenne, T., Verdelhan, S., Coudert, P., & Elsen, J. M. (2006). Genetic variability of the resistance for three types of enteropathy in the growing rabbit. *Livestock Science*, 101, 110–115.
- Djukovic, A., Garcia-Garcera, M., Martínez-Paredes, E., Isaac, S., Artacho, A., Martínez, J., & Ubeda, C. (2018). Gut colonization by a novel *clostridium* species is associated with the onset of epizootic rabbit enteropathy. *Veterinary Research*, 49, 123.
- Dow, M. A., Tóth, I., Alexa, P., Davies, M., Malik, A., Oswald, E., & Nagy, B. (2005). Predominance of *afr2* and *ral* fimbrial genes related to those encoding the K88 and CS31A fimbrial adhesins in enteropathogenic *Escherichia coli* isolates from rabbits with postweaning diarrhea in Central Europe. *Journal of Clinical Microbiology*, 43, 1366–1371.
- Eady, S., Garreau, H., & Gilmour, A. (2007). Heritability of resistance to bacterial infection in meat rabbits. *Livestock Science*, 112, 90–98.
- Fontanesi, L., Bovo, S., & Schiavo, G. (2021). The genome of the European rabbit and genomic tools. In L. Fontanesi (Ed.), *The genetics and genomics of the rabbit* (pp. 38–42). CAB International.
- Fu, L., Yang, Z. J., Chen, S. Y., Wang, J., & Lai, S. J. (2014). Investigation of JAK1 and STAT3 polymorphisms and their gene-gene interactions in nonspecific digestive disorder of rabbits. *Gene*, 543, 8–14.
- Fu, L., Zhao, M. D., Chen, S. Y., Jia, X. B., & Lai, S. J. (2015). Investigation of genetic susceptibility to nonspecific digestive disorder between TYK2, JAK1, and STAT3 genes in rabbits. *Livestock Science*, 181, 137–142.
- Garcia, J. P., Li, J., Shrestha, A., Freedman, J. C., Beingesser, J., McClane, B. A., & Uzal, F. A. (2014). *Clostridium perfringens* type A enterotoxin damages the rabbit colon. *Infection and Immunity*, 82, 2211–2218.
- García-Quirós, A., Arnau-Bonachera, A., Penadés, M., Cervera, C., Martínez-Paredes, E., Ródenas, L., Selva, L., Viana, D., Corpa, J. M., & Pascual, J. J. (2014). A robust rabbit line increases leucocyte counts at weaning and reduces mortality by digestive disorder during fattening. *Veterinary Immunology and Immunopathology*, 161, 123–131.
- Garreau, H., Brard, S., Hurtaud, J., Guitton, E., Cauquil, L., Licois, D., Schwartz, B., Combes, S., & Gidenne, T. (2012). Divergent selection for digestive disorders in two commercial rabbit lines: Response of crossbred young rabbits to an experimental inoculation of *Echerichia coli* 0103. In *Proceedings of the 10th World Rabbit Congress*. Sharm El-Sheikh, Egypt, 3-6 September 2012 (pp. 153–157).
- Garreau, H., Eady, S., Hurtaud, J., & Legarra, A. (2008). Genetic parameters of production traits and resistance to digestive disorders in a commercial rabbit population. In *Proceedings of the 9th World Rabbit Congress*. Verona, Italy, 10-13 June 2008 (pp. 103–108).
- Garreau, H., Gunia, M., Lemos de Matos, A., Abrantes, J., & Esteves, P. J. (2021). Genetics of disease resistance in the European rabbit. In L. Fontanesi (Ed.), *The genetics and genomics of the rabbit* (pp. 163–178). CAB International.
- Garreau, H., Licois, D., Rupp, R., & Rochambeau, H. (2006). Genetic variability of the resistance to epizootic rabbit enteropathy (ERE): New results. In *Proceedings of the 8th World Congress on Genetics Applied to Livestock Production*. Belo Horizonte, Brazil, 13-18 August 2006 (pp. 15–28).
- Gunia, M., David, I., Hurtaud, J., Maupin, M., Gilbert, H., & Garreau, H. (2015). Resistance to infectious diseases is a heritable trait in rabbits. *Journal of Animal Science*, 93, 5631–5638.
- Gunia, M., David, I., Hurtaud, J., Maupin, M., Gilbert, H., & Garreau, H. (2018). Genetic parameters for resistance to non-specific diseases and production traits measured in challenging and selection environments; application to a rabbit case. *Frontiers in Genetics*, 9, 467.
- Harcourt-Brown, F. (Ed.). (2002). Digestive disorders. In *Textbook of rabbit medicine* (pp. 249–291). Butterworth-Heinemann, Reed Educational and Professional Publishing Ltd.
- Hu, X., Wang, F., Yang, S., Yuan, X., Yang, T., Zhou, Y., & Li, Y. (2021). Rabbit microbiota across the whole body revealed by 16S rRNA gene amplicon sequencing. *BMC Microbiology*, 21, 312.
- Huse, S. M., Dethlefsen, L., Huber, J. A., Welch, D. M., Relman, D. A., & Sogin, M. L. (2008). Exploring microbial diversity and taxonomy using SSU rRNA hypervariable tag sequencing. *PLoS Genetics*, 4, e1000255.
- Jin, D. X., Zou, H. W., Liu, S. Q., Wang, L. Z., Xue, B., Wu, D., Tian, G., Cai, J., Yan, T. H., Wang, Z. S., & Peng, Q. H. (2018). The underlying microbial mechanism of epizootic rabbit enteropathy triggered by a low fiber diet. *Scientific Reports*, 8, 12489.
- Knap, P. W., & Doeschl-Wilson, A. (2020). Why breed disease-resilient livestock, and how? *Genetics Selection Evolution*, 52, 1–18.
- Laghouaouta, H., Sosa-Madrid, B. S., Zubiri-Gaitán, A., Hernández, P., & Blasco, A. (2020). Novel genomic regions associated with intramuscular fatty acid composition in rabbits. *Animals*, 10, 2090.

- Lavazza, A., Cerioli, M., Martella, V., Tittarelli, C., Grilli, G., Brivio, R., & Buonavoglia, C. (2008). *Rotavirus in diarrheic rabbits: Prevalence and characterization of strains in Italian farms*. In: *Proceedings of the 9th World Rabbit Congress*. Verona, Italy, 10-13 June 2008 (pp. 993-997).
- Li, Y., Hu, S., Wang, J., Chen, S., Jia, X., & Lai, S. (2018). Molecular cloning, polymorphism, and expression analysis of the LKB1/STK11 gene and its association with non-specific digestive disorder in rabbits. *Molecular and Cellular Biochemistry*, *449*, 127-136.
- Liao, Y., Wang, Z., Glória, L. S., Zhang, K., Zhang, C., Yang, R., Luo, X., Jia, X., Lai, S. J., & Chen, S. Y. (2021). Genome-wide association studies for growth curves in meat rabbits through the single-step nonlinear mixed model. *Frontiers in Genetics*, *12*, 750939.
- Licois, D., Coudert, P., & Marlier, D. (2006). Epizootic rabbit enteropathy. In L. Maertens & P. Coudert (Eds.), *Recent advances in rabbit sciences* (pp. 163-170). ILVO.
- Licois, D., Wyers, M., & Coudert, P. (2005). Epizootic rabbit enteropathy: Experimental transmission and clinical characterization. *Veterinary Research*, *36*, 601-613.
- Liu, W. C., Zeng, Y., Chen, S. Y., Jia, X. B., & Lai, S. J. (2017). The polymorphism and gene expression of chemokine receptor 6 is associated with digestive disorders in rabbits. *Indian Journal of Animal Research*, *51*, 269-274.
- Liu, Y. F., Zhang, G. W., Xiao, Z. L., Yang, Y., Deng, X. S., Chen, S. Y., Wang, J., & Lai, S. J. (2013). Single nucleotide polymorphisms of NLRP12 gene and association with non-specific digestive disorder in rabbit. *Asian-Australasian Journal of Animal Sciences*, *26*, 1072-1079.
- Malo, M. (2019). *Bacteroides fragilis enteropatógeno: Enfermedad emergente o hallazgo clínico?* In: *Proceedings of the 44th Symposium de Cunicultura de ASESCU*. Aranda de Duero, Spain, 5-6 June 2019 (pp. 83-86).
- Marlier, D., Dewrée, R., Delleur, V., Licois, D., Lassence, C., Poulipoulis, A., & Vindevogel, H. (2003). Description des principales étiologies des maladies digestives chez le lapin européen (*Oryctolagus cuniculus*). *Annales de Médecine Vétérinaire*, *147*, 385-392.
- Mora, M., Velasco-Galilea, M., Sánchez, J. P., Ramayo-Caldas, Y., & Piles, M. (2022). Disentangling the causal relationship between rabbit growth and cecal microbiota through structural equation models. *Genetics Selection Evolution*, *54*, 81.
- Myers, L. L., Shoop, D. S., Collins, J. E., & Bradbury, W. C. (1989). Diarrheal disease caused by enterotoxigenic *Bacteroides fragilis* in infant rabbits. *Journal of Clinical Microbiology*, *27*, 2025-2030.
- O'Leary, N. A., Wright, M. W., Brister, J. R., Ciuffo, S., Haddad, D., McVeigh, R., Rajput, B., Robbertse, B., Smith-White, B., Ako-Adjei, D., Astashyn, A., Badretin, A., Bao, Y., Blinkova, O., Brover, V., Chetvernin, V., Choi, J., Cox, E., Ermolaeva, O., ... Pruitt, K. D. (2016). Reference sequence (RefSeq) database at NCBI: Current status, taxonomic expansion, and functional annotation. *Nucleic Acids Research*, *44*, D733-D745.
- Oslesbee, B. L., & Lord, B. (2020). Gastrointestinal diseases of rabbits. In K. E. Quesenberry, C. J. Orcutt, C. Mans, & J. W. Carpenter (Eds.), *Ferrets, rabbits and rodents* (4th ed., pp. 174-187). Elsevier.
- Phocas, F., Belloc, C., Bidanel, J., Delaby, L., Dourmad, J. Y., Dumont, B., Ezanno, P., Fortun-Lamothe, L., Foucras, G., Frappat, B., González-García, E., Hazard, D., Larzul, C., Lubac, S., Mignon-Grasteau, S., Moreno, C. R., Tixier-Boichard, M., & Brochard, M. (2016). Review: Towards the agroecological management of ruminants, pigs and poultry through the development of sustainable breeding programmes: I-selection goals and criteria. *Animal*, *10*, 1749-1759.
- R Core Team. (2022). *R: A language and environment for statistical computing*. R Foundation for Statistical Computing. URL: <https://www.R-project.org/>
- Rashwan, A. A., & Marai, I. F. M. (2000). Mortality in young rabbits: A review. *World Rabbit Science*, *8*, 111-124.
- Rosell, J. (2003). Health status of commercial rabbitries in the Iberian peninsula. A practitioner's study. *World Rabbit Science*, *11*, 157-169.
- Sánchez, J. P., Legarra, A., Velasco-Galilea, M., Piles, M., Sánchez, A., Rafel, O., González-Rodríguez, O., & Ballester, M. (2020). Genome-wide association study for feed efficiency in collective cage-raised rabbits under full and restricted feeding. *Animal Genetics*, *51*, 799-810.
- Schmieder, R., & Edwards, R. (2011). Quality control and preprocessing of metagenomic datasets. *Bioinformatics*, *27*, 863-864.
- Schoch, C. L., Ciuffo, S., Domrachev, M., Hotton, C. L., Kannan, S., Khovanskaya, R., Leipe, D., McVeigh, R., O'Neill, K., Robbertse, B., Sharma, S., Soussov, V., Sullivan, J. P., Sun, L., Turner, S., & Karsch-Mizrachi, I. (2020). NCBI Taxonomy: a comprehensive update on curation, resources and tools. *Database*, *2020*, baaa062.
- Shrestha, M., Garreau, H., Balmisse, E., Bed'hom, B., David, I., Guitton, E., Helloin, E., Lenoir, G., Maupin, M., Robert, R., Lantier, F., & Gunia, M. (2020). Genetic parameters of resistance to pasteurellosis using novel response traits in rabbits. *Genetics Selection Evolution*, *52*, 1-14.
- Solans, L., Arnal, J. L., Sanz, C., Benito, A., Chacón, G., Alzuguren, O., & Fernández, A. B. (2019). Rabbit enteropathies on commercial farms in the Iberian peninsula: Etiological agents identified in 2018-2019. *Animals*, *9*, 1142.
- Sosa-Madrid, B. S., Hernández, P., Blasco, A., Haley, C. S., Fontanesi, L., Santacreu, M. A., Pena, R. N., Navarro, P., & Ibáñez-Escriche, N. (2020). Genomic regions influencing intramuscular fat in divergently selected rabbit lines. *Animal Genetics*, *51*, 58-69.
- Sosa-Madrid, B. S., Santacreu, M. A., Blasco, A., Fontanesi, L., Pena, R. N., & Ibáñez-Escriche, N. (2020). A genomewide association study in divergently selected lines in rabbits reveals novel genomic regions associated with litter size traits. *Journal of Animal Breeding and Genetics*, *137*, 123-138.
- Stelzer, G., Rosen, N., Plaschkes, I., Zimmerman, S., Twik, M., Fishilevich, S., Stein, T. I., Nudel, R., Lieder, I., Mazor, Y., Kaplan, S., Dahary, D., Warshawsky, D., Guan-Golan, Y., Kohn, A., Rappaport, N., Safran, M., & Lancet, D. (2016). The GeneCards suite: From gene data mining to disease genome sequence analyses. *Current Protocols in Bioinformatics*, *54*, 1.30.1-1.30.33.
- Vela, A. I., Fernández, A., Moreno, B., Casamayor, A., Chacón, G., Villa, A., Comenge, J., & Fernández-Garayzabal, J. F. (2010). Isolation of *enterococcus hirae* from suckling rabbits with diarrhoea. *The Veterinary Record*, *167*, 345-346.
- Velasco-Galilea, M., Piles, M., Viñas, M., Rafel, O., González-Rodríguez, O., Guvernau, M., & Sánchez, J. P. (2018). Rabbit microbiota changes throughout the intestinal tract. *Frontiers in Microbiology*, *9*, 2144.

- Wang, D., Xie, K., Wang, Y., Hu, J., Li, W., Yang, A., Zhang, Q., Ning, C., & Fan, X. (2022). Cost-effectively dissecting the genetic architecture of complex wool traits in rabbits by low-coverage sequencing. *Genetics, Selection, Evolution*, *54*, 75.
- Wang, J., Fan, H., Xia, S., Shao, J., Tang, T., Chen, L., Bai, X., Sun, W., Jia, X., Chen, S., & Lai, S. (2022). Microbiome, transcriptome, and metabolomic analyses revealed the mechanism of immune response to diarrhea in rabbits fed antibiotic-free diets. *Frontiers in Microbiology*, *13*, 888984.
- Weir, B. S., & Cockerham, C. C. (1984). Estimating F-statistics for the analysis of population structure. *Evolution*, *38*, 1358–1370.
- Yang, X., Deng, F., Wu, Z., Chen, S. Y., Shi, Y., Jia, X., Hu, S., Wang, J., Cao, W., & Lai, S. J. (2020). A genome-wide association study identifying genetic variants associated with growth, carcass and meat quality traits in rabbits. *Animals*, *10*, 1068.
- Yang, Y., Zhang, G. W., Chen, S. Y., Peng, J., & Lai, S. J. (2013). Polymorphism of *NLRP3* gene and association with susceptibility to digestive disorders in rabbit. *Asian-Australasian Journal of Animal Sciences*, *26*, 455–462.
- Zhang, G. W., Wang, H. Z., Chen, S. Y., Li, Z. C., Zhang, W. X., & Lai, S. J. (2011). A reduced incidence of digestive disorders in rabbits is associated with allelic diversity at the TLR4 locus. *Veterinary Immunology and Immunopathology*, *144*, 482–486.
- Zhang, G. W., Zhang, W. X., Chen, S. Y., Yoshimura, Y., Isobe, N., & Lai, S. J. (2013). Dectin-1 gene polymorphism is associated with susceptibility to nonspecific digestive disorders and cytokine expression in rabbits. *Journal of Animal Science*, *91*, 4051–4059.
- Zhang, W. X., Zhang, G. W., Peng, J., Zhang, J. L., Yang, Y., & Lai, S. J. (2013). A synonymous mutation in *NOD2* gene was significantly associated with non-specific digestive disorder in rabbit. *Gene*, *516*, 193–197.
- Zhou, X., & Stephens, M. (2012). Genome-wide efficient mixed-model analysis for association studies. *Nature Genetics*, *44*, 821–824.

SUPPORTING INFORMATION

Additional supporting information can be found online in the Supporting Information section at the end of this article.

How to cite this article: Bovo, S., Ribani, A., Schiavo, G., Taurisano, V., Bertolini, F., Fornasini, D., Frabetti, A., & Fontanesi, L. (2024). Genome-wide association studies for diarrhoea outcomes identified genomic regions affecting resistance to a severe enteropathy in suckling rabbits. *Journal of Animal Breeding and Genetics*, *141*, 328–342. <https://doi.org/10.1111/jbg.12844>