

# Association of High Tumor Mutation Burden in Non-Small Cell Lung Cancers With Increased Immune Infiltration and Improved Clinical Outcomes of PD-L1 Blockade Across PD-L1 Expression Levels

Biagio Ricciuti, MD; Xinan Wang, PhD; Joao V. Alessi, MD; Hira Rizvi, BA; Navin R. Mahadevan, MD; Yvonne Y. Li, PhD; Andrew Polio, MD; James Lindsay, MD; Renato Umeton, PhD; Rileen Sinha, PhD; Natalie I. Vokes, MD; Gonzalo Recondo, MD, PhD; Giuseppe Lamberti, MD; Marissa Lawrence, BS; Victor R. Vaz, MD; Giulia C. Leonardi, MD; Andrew J. Plodkowski, MD; Hersh Gupta, BA; Andrew D. Cherniack, PhD; Michael Y. Tolstorukov, PhD; Bijaya Sharma, BS; Kristen D. Felt, MS; Justin F. Gainor, MD; Arvind Ravi, MD, PhD; Gad Getz, PhD; Kurt A. Schalper, MD, PhD; Brian Henick, MD; Patrick Forde, MD; Valsamo Anagnostou, MD, PhD; Pasi A. Jänne, MD; Eliezer M. Van Allen, MD; Mizuki Nishino, MD; Lynette M. Sholl, MD; David C. Christiani, MD, PhD; Xihong Lin, PhD; Scott J. Rodig, MD, PhD; Matthew D. Hellmann, MD; Mark M. Awad, MD, PhD

[+ Multimedia](#)

[+ Supplemental content](#)

**IMPORTANCE** Although tumor mutation burden (TMB) has been explored as a potential biomarker of immunotherapy efficacy in solid tumors, there still is a lack of consensus about the optimal TMB threshold that best discriminates improved outcomes of immune checkpoint inhibitor therapy among patients with non-small cell lung cancer (NSCLC).

**OBJECTIVES** To determine the association between increasing TMB levels and immunotherapy efficacy across clinically relevant programmed death ligand-1 (PD-L1) levels in patients with NSCLC.

**DESIGN, SETTING, AND PARTICIPANTS** This multicenter cohort study included patients with advanced NSCLC treated with immunotherapy who received programmed cell death-1 (PD-1) or PD-L1 inhibition in the Dana-Farber Cancer Institute (DFCI), Memorial Sloan Kettering Cancer Center (MSKCC), and in the Stand Up To Cancer (SU2C)/Mark Foundation data sets. Clinicopathological and genomic data were collected from patients between September 2013 and September 2020. Data analysis was performed from November 2021 to February 2022.

**EXPOSURES** Treatment with PD-1/PD-L1 inhibition without chemotherapy.

**MAIN OUTCOMES AND MEASURES** Association of TMB levels with objective response rate (ORR), progression-free survival (PFS), and overall survival (OS).

**RESULTS** In the entire cohort of 1552 patients with advanced NSCLC who received PD-1/PD-L1 blockade, the median (range) age was 66 (22-92) years, 830 (53.5%) were women, and 1347 (86.8%) had cancer with nonsquamous histologic profile. A regression tree modeling ORR as a function of TMB identified 2 TMB groupings in the discovery cohort (MSKCC), defined as low TMB ( $\leq 19.0$  mutations per megabase) and high TMB ( $>19.0$  mutations per megabase), which were associated with increasing improvements in ORR, PFS, and OS in the discovery cohort and in 2 independent cohorts (DFCI and SU2C/Mark Foundation). These TMB levels also were associated with significant improvements in outcomes of immunotherapy in each PD-L1 tumor proportion score subgroup of less than 1%, 1% to 49%, and 50% or higher. The ORR to PD-1/PD-L1 inhibition was as high as 57% in patients with high TMB and PD-L1 expression 50% or higher and as low as 8.7% in patients with low TMB and PD-L1 expression less than 1%. Multiplexed immunofluorescence and transcriptomic profiling revealed that high TMB levels were associated with increased CD8-positive, PD-L1-positive T-cell infiltration, increased PD-L1 expression on tumor and immune cells, and upregulation of innate and adaptive immune response signatures.

**CONCLUSIONS AND RELEVANCE** These findings suggest that increasing TMB levels are associated with immune cell infiltration and an inflammatory T-cell-mediated response, resulting in increased sensitivity to PD-1/PD-L1 blockade in NSCLC across PD-L1 expression subgroups.

*JAMA Oncol.* 2022;8(8):1160-1168. doi:10.1001/jamaoncol.2022.1981  
Published online June 16, 2022. Corrected on November 17, 2022.

**Author Affiliations:** Author affiliations are listed at the end of this article.

**Corresponding Author:** Mark M. Awad, Lowe Center for Thoracic Oncology, Dana-Farber Cancer Institute, Harvard Medical School, 450 Brookline Ave, Dana 1240, Boston, MA 02215 ([mark\\_awad@dfci.harvard.edu](mailto:mark_awad@dfci.harvard.edu)).

Immune checkpoint inhibitors (ICIs) are an integral component of standard treatment for the majority of patients with advanced non-small cell lung cancer (NSCLC).<sup>1-4</sup> However, the degree of benefit associated with ICI therapy is highly variable, and the identification of clinically available biomarkers of response to ICIs in NSCLC has been challenging. Although programmed death ligand-1 (PD-L1) expression levels are associated with response to immunotherapy in NSCLC,<sup>2,5</sup> lung cancers across all PD-L1 expression levels may respond to ICIs. In addition, PD-L1 expression is temporally and spatially heterogeneous,<sup>6</sup> further highlighting the need for identifying additional precise biomarkers of immunotherapy efficacy. Tumor mutation burden (TMB), defined as the total number of nonsynonymous mutations per sequenced coding area of a tumor genome, has emerged as a potential factor associated with ICI efficacy across different tumor types.<sup>7</sup> However, in NSCLC, despite several large prospective clinical trials aimed at establishing TMB as a robust biomarker of ICI therapy,<sup>8-10</sup> they have not consistently demonstrated an overall survival benefit; therefore, the role of TMB as a biomarker in NSCLC remains elusive. Here, we analyzed multiple independent cohorts of patients with NSCLC treated with programmed cell death-1 (PD-1)/PD-L1 inhibitors to identify clinicopathological, genomic, and immunophenotypic correlates of TMB, and to investigate TMB groupings that best discriminate responders from nonresponders to ICIs.

## Methods

This study was approved by the Dana-Farber Cancer Institute institutional review board. All patients provided written informed consent at enrollment in the respective cohorts. This cohort study follows the Strengthening the Reporting of Observational Studies in Epidemiology (STROBE) reporting guideline. Patients from the Memorial Sloan Kettering Cancer Center (MSKCC), Dana-Farber Cancer Institute (DFCI), and the Stand Up To Cancer (SU2C)/Mark Foundation data set whose tumors underwent genomic profiling with MSK-IMPACT, DFCI-OncoPanel, or whole-exome sequencing, respectively, were included.

### Statistical Analysis

The TMB distributions were normalized across different platforms by applying a normal transformation followed by standardization to *z* scores, as described elsewhere.<sup>11</sup> An unbiased regression tree<sup>12</sup> was used to identify the optimal TMB cutoff regarding objective response in the MSKCC discovery cohort, and this cutoff was then externally validated in the DFCI and SU2C/Mark Foundation cohorts in both univariable and multivariable Cox regression analyses (eFigure 1 in the Supplement). Significance was set at 2-sided *P* < .05. The TMB comparisons were computed using the Mann-Whitney *U* test or the Kruskal-Wallis test, when appropriate. Linear correlations were evaluated using Spearman test, and categorical variables were evaluated using Fisher exact test. All statistical analyses were performed using R statistical analysis version 3.6.3

## Key Points

**Question** Is tumor mutation burden (TMB) associated with improved outcomes of programmed cell death-1 (PD-1)/programmed death ligand-1 (PD-L1) inhibition across PD-L1 expression levels in non-small cell lung cancer (NSCLC)?

**Findings** In this cohort study of 1552 patients with NSCLC, the group with high TMB had improved response rates and survival after receiving PD-1/PD-L1 inhibition therapy across PD-L1 expression subgroups compared with the group with low TMB. High TMB levels were associated with increased CD8-positive T-cell infiltration and distinct immune response gene expression signatures.

**Meaning** These findings suggest that in NSCLC, a high number of nonsynonymous tumor mutations is associated with immune cell infiltration and inflammatory T-cell expression signatures, leading to increased sensitivity to PD-1/PD-L1 inhibition across PD-L1 expression subgroups.

(R Project for Statistical Computing). Data analysis was performed from November 2021 to February 2022. Detailed methods, including statistical analysis, methods used for TMB assessment, genomic, transcriptomic, and immunophenotypic analysis, are reported in the eAppendix in the Supplement.

## Results

### Patient Characteristics

A total of 3591 NSCLC samples at DFCI that underwent tumor genomic profiling were used to identify clinical, histologic, and genomic characteristics associated with TMB, summarized in eTable 1 in the Supplement. The median (range) age was 66 (18-99) years, and 78.3% of patients had a history of tobacco use. In the entire cohort of 1552 patients with advanced NSCLC who received PD-L1 blockade, the median (range) age was 66 (22-92) years, 830 (53.5%) were women, and 1347 (86.8%) had cancer with nonsquamous histologic profile. The median (range) TMB was 9.8 (0-104.9) mutations per megabase (eFigure 2A in the Supplement). The TMB values were highest among current smokers, followed by former smokers, and lowest among never smokers (eFigure 2B in the Supplement); there was a linear association between TMB and pack-years of tobacco use (eFigure 2C in the Supplement). The TMB distributions were comparable in squamous and nonsquamous histologic profiles among tobacco-associated NSCLCs (eFigure 2D in the Supplement). The TMB was higher in patients with stage II, III, and IV NSCLCs compared with those with stage I NSCLCs (eFigure 2E in the Supplement). When analyzed by oncogenic mutation status, NSCLCs with activating mutations in *BRAF* and *KRAS* had the highest TMB, as did those without an identifiable driver mutation, whereas NSCLCs with *EGFR* mutations and chromosomal rearrangements in *RET* and *ALK* had the lowest TMB of the cases examined (eFigure 3A and 3B in the Supplement).

### Association of TMB With Clinical Outcomes of PD-1/PD-L1 Inhibition in NSCLC

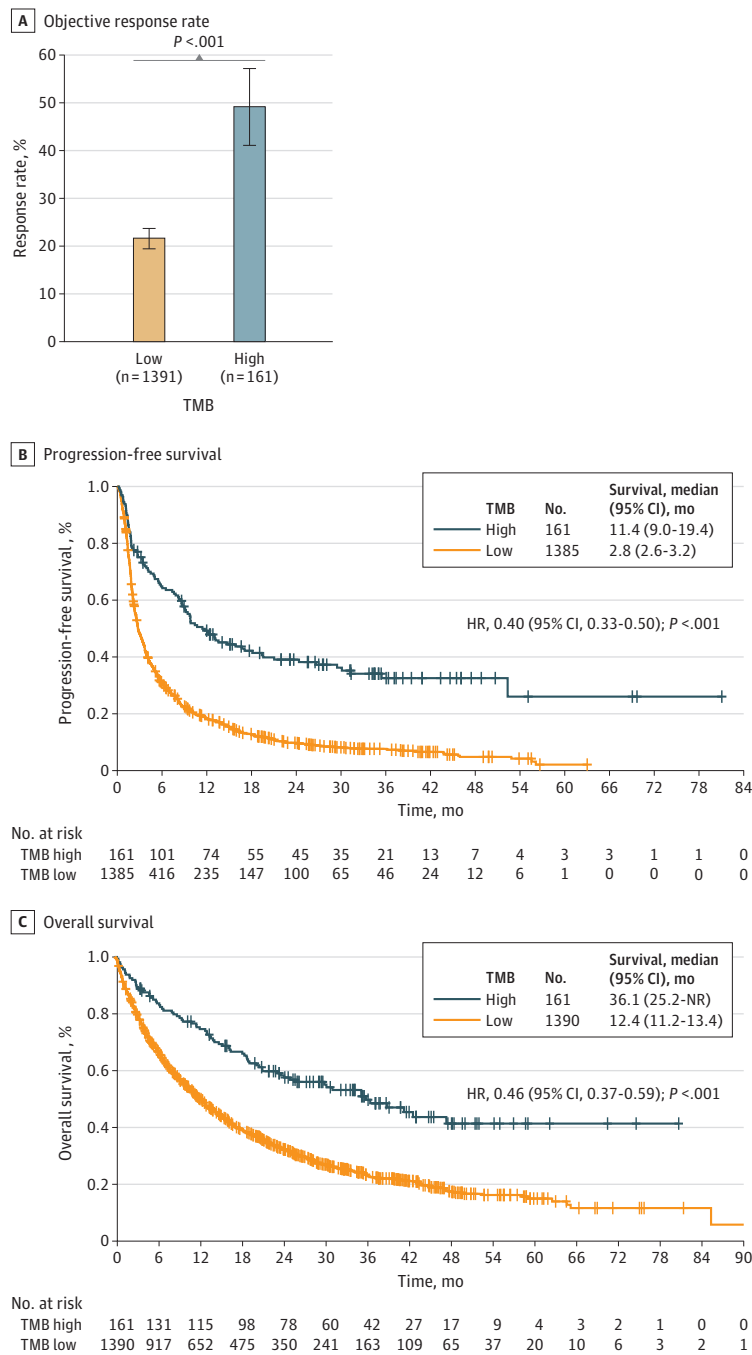
We next investigated the association of TMB with clinical outcomes among patients who received ICI at MSKCC (672 patients), DFCI (714 patients), and SU2C (166 patients) (eTable 2 in the Supplement). In each of the 3 cohorts, tumors from responders to immunotherapy had significantly higher TMB compared with those from patients with stable or progressive disease ( $P < .001$ , Kruskal-Wallis analysis of variance) (eFigure 4 in the Supplement), consistent with previous reports.<sup>13,14</sup> Given inconsistent results from previous studies exploring the association of increasing TMB levels with ICI efficacy in different tumor types,<sup>15-18</sup> we next sought to determine whether there was an optimal threshold of TMB that discriminated responders from nonresponders to ICI specifically in NSCLC, leveraging data from multiple centers using a statistically robust framework. Because TMB was estimated with different platforms in the MSKCC (MSK-IMPACT), DFCI (DFCI OncoPanel), and in the SU2C/Mark Foundation cohorts (whole-exome sequencing), we first harmonized the TMB distribution across the 3 platforms by applying a normal transformation followed by standardization to  $z$  scores, as described elsewhere<sup>11</sup> (eFigure 5 in the Supplement). To identify an optimal TMB cutoff, we first fitted a regression tree in the MSKCC discovery cohort modeling the response to ICI as a function of normalized TMB. In this discovery cohort, a TMB  $z$  score of greater than 1.16, corresponding to 19.0 mutations per megabase on the MSK-IMPACT platform, identified patients with the greatest likelihood of responding to ICI (eFigure 6A in the Supplement). Patients with a TMB greater than 19.0 mutations per megabase had significantly higher objective response rate (ORR) to ICI (42.5% vs 18.0%; difference, 24.5%; 95% CI, 12.7%-36.2%;  $P < .001$ ), and longer progression-free survival (PFS) (hazard ratio [HR], 0.38; 95% CI, 0.28-0.52;  $P < .001$ ) and overall survival (OS) (HR, 0.46; 95% CI, 0.32-0.65;  $P < .001$ ) compared with those with a TMB less than or equal to 19.0 mutations per megabase (eFigure 6B, 6C, and 6D in the Supplement). We next validated the impact of this normalized TMB  $z$  score cutoff of 1.16 in the DFCI and SU2C/Mark Foundation cohorts. In the DFCI cohort, we confirmed that patients with high-TMB NSCLC ( $>1.16$   $z$  score, which corresponded to  $>19.3$  mutations per megabase in this cohort) had a significantly higher ORR to ICI (44.9% vs 21.1%; difference, 23.8%; 95% CI, 11.6%-35.9%;  $P < .001$ ) (eFigure 7A in the Supplement) and significantly improved PFS (HR, 0.50; 95% CI, 0.37-0.67;  $P < .001$ ) (eFigure 7B in the Supplement) and OS (HR, 0.55; 95% CI, 0.39-0.77;  $P < .001$ ) (eFigure 7C in the Supplement) compared with patients with low TMB ( $\leq 19.3$  mutations per megabase). Similarly, in the SU2C/Mark Foundation data set, patients with a high TMB  $z$  score ( $>1.16$ ), corresponding to more than 16.0 mutations per megabase in this cohort, had significantly higher ORR (89.5% vs 37.4%; difference, 52.1%; 95% CI, 36.2%-67.9%;  $P < .001$ ) (eFigure 7D in the Supplement) and longer PFS (HR, 0.18; 95% CI, 0.08-0.41;  $P < .001$ ) (eFigure 7E in the Supplement) and OS (HR, 0.18; 95% CI, 0.06-0.57;  $P = .003$ ) (eFigure 7F in the Supplement) compared with those with a TMB less than or equal to 16.0 mutations per megabase. The TMB thresholds corresponding to the

normalized TMB  $z$  score of 1.16 based on different platforms across the 3 cohorts is shown in eTable 3 in the Supplement; this value corresponded to the approximately 90th percentile for TMB in each of the cohorts. Importantly, a high TMB retained a significant association with improved ORR, PFS, and OS in multivariable analysis in each of the 3 independent cohorts (eFigures 8-10 in the Supplement). Multivariable sensitivity analysis using inverse probability weights<sup>19</sup> (eFigures 11-13 in the Supplement) and multiple imputation<sup>20</sup> (eTables 4-6 in the Supplement) were conducted to account for potential selection bias resulting from PD-L1 missingness, and confirmed that a high TMB was an independent factor associated with improved ORR, PFS, and OS in each of the 3 independent cohorts.

Having demonstrated that a high TMB was associated with improved clinical outcomes of immunotherapy in 3 independent cohorts of patients, we further evaluated the association of this TMB threshold in a pooled analysis of the MSKCC, DFCI, and SU2C/Mark Foundation cohorts. We confirmed that patients with NSCLC and a high harmonized TMB  $z$  score of 1.16 or higher (corresponding to  $\geq 19.0$  mutations per megabase for the MSKCC,  $\geq 19.3$  mutations per megabase for the DFCI cohort, and  $\geq 16.0$  mutations per megabase for the SU2C/Mark Foundation cohort) had significantly higher ORR (49.1% vs 21.5%; difference, 27.6%; 95% CI, 19.6%-35.6%;  $P < .001$ ) and significantly longer PFS (11.4 vs 2.8 months; HR, 0.40; 95% CI, 0.33-0.50;  $P < .001$ ) and OS (36.1 vs 12.4 months; HR, 0.46; 95% CI, 0.37-0.59;  $P < .001$ ) compared with those with a low TMB (Figure 1), even after excluding *EGFR*-positive and *ALK*-positive NSCLCs, as well as never smokers (eFigure 14 in the Supplement). Baseline clinicopathological features of patients with low and high TMB in the combined cohort are summarized in Table 1. To further validate our findings, we performed meta-analyses of the combined cohorts that confirmed an association between high TMB and ORR (adjusted OR, 2.90; 95% CI, 1.78-4.70;  $P < .001$ ), PFS (adjusted HR, 0.47; 95% CI, 0.36-0.61;  $P < .001$ ), and OS (adjusted HR, 0.59; 95% CI, 0.44-0.79;  $P = .001$ ) (eTable 7 in the Supplement).

Previous studies<sup>14,15</sup> have shown that gradually increasing TMB levels are associated with progressively improving clinical outcomes of ICI across different tumor types, suggesting a more continuous association of TMB with ICI efficacy. We also noted that ORR, PFS, and OS progressively improved along with increasing TMB percentile cutoffs (eFigures 15A, 15B, and 15C in the Supplement). As this gradual improvement in outcomes could be influenced by TMB outliers, we examined the response rate and the HRs for PFS and OS in each TMB decile independently, relative to the lowest decile as reference. Only patients with a TMB at the uppermost percentiles had improved ORR, PFS, and OS after receiving immunotherapy (eFigures 15A, 15D, and 15E in the Supplement), again suggesting that the benefit observed with increasing TMB cutoffs is associated primarily with NSCLCs with a very high TMB. To dissect characteristics of a very high TMB, we examined the impact of the same TMB threshold on a separate cohort of 1617 patients at DFCI and MSKCC with advanced NSCLC who never received ICI, and found that a high TMB (TMB  $z$  score  $>1.16$ , corresponding to a TMB  $>19.0$  mutations per megabase in the

**Figure 1. Objective Response Rate, Progression-Free Survival, and Overall Survival in Patients With a High vs Low Harmonized Tumor Mutation Burden (TMB)**



MSKCC cohort and >19.3 mutations per megabase in the DFCI cohort) was not associated with the outcomes (eFigure 16 in the Supplement).

**TMB as a Biomarker of Response to PD-1/PD-L1 Blockade in the Context of Different PD-L1 Expression Levels**

To investigate the differing associations of TMB and PD-L1 expression with clinical outcomes of ICI in the combined cohort, we examined the association of the high vs low TMB

threshold with ORR, PFS, and OS to ICI across the 3 clinically relevant PD-L1 expression subgroups of less than 1%, 1% to 49%, and 50% or higher, as distinct PD-L1-based therapies have been approved on the basis of these PD-L1 categories.<sup>1-4</sup> We identified that a high TMB (TMB z score >1.16 for each cohort) was associated with improved ORR and survival in each PD-L1 subset (eFigure 17 in the Supplement and Table 2), compared with a low TMB (TMB z score ≤1.16). Notably, patients with NSCLCs harboring both high TMB and PD-L1 expression 50% or higher

**Table 1. Characteristics of Patients With Non-Small Cell Lung Cancer Treated With PD-1/PD-L1 Inhibition in the Pooled Cohort of Patients From the Memorial Sloan Kettering Cancer Center, Dana-Farber Cancer Institute, and Stand Up To Cancer/Mark Foundation Data Sets, According to TMB Status**

Clinical characteristic	Patients, No. (%)	
	Low TMB (n = 1391)	High TMB (n = 161)
Age, median (range), y	67 (22-92)	65 (44-83)
Sex		
Male	639 (45.9)	83 (51.6)
Female	752 (54.1)	78 (48.4)
Smoking status		
Current or former	1165 (83.8)	157 (97.5)
Never	226 (16.2)	4 (2.5)
Histologic profile		
Nonsquamous	1198 (86.1)	149 (92.5)
Squamous	193 (13.9)	12 (7.5)
Oncogenic driver mutation		
<i>KRAS</i>	482 (34.7)	38 (23.6)
<i>EGFR</i>	138 (9.9)	5 (3.1)
Other	120 (8.6)	15 (9.3)
None identified	651 (46.8)	103 (64.0)
Eastern Cooperative Oncology Group performance status		
0-1	1058 (85.5)	127 (89.4)
≥2	179 (14.5)	15 (10.6)
Not assessed	154 (NA)	19 (NA)
Line of therapy		
First	473 (34.0)	58 (36.0)
Second or higher	918 (66.0)	103 (64.0)
PD-L1 expression		
<1%	251 (27.4)	30 (28.3)
1%-49%	257 (28.1)	30 (28.3)
≥50%	407 (44.5)	46 (43.4)
Not assessed	476 (NA)	55 (NA)

Abbreviations: NA, not applicable; PD-1, programmed cell death-1; PD-L1, programmed death ligand 1; TMB, tumor mutation burden.

experienced an ORR of 57% and also had the longest PFS (18.1 months) and OS (47.7 months) with ICI. In contrast, patients with low-TMB and PD-L1-negative NSCLC had the lowest ORR (8.7%) and the shortest PFS (2.1 months) and OS (10.4 months). These data indicate that TMB can further stratify outcomes of immunotherapy for patients within each clinically relevant PD-L1 expression group.

### Elevated TMB and Increased CD8-Positive PD1-Positive T Cells in NSCLC

To explore mechanisms by which NSCLCs with high TMB are more responsive to ICI, we next performed multiplexed immunofluorescence for CD8, Foxp3, PD-1, and PD-L1 on 428 NSCLC samples at DFCI. We found a significant association between higher TMB levels and increased CD8-positive T-cell counts intratumorally, at the tumor-stroma interface, and in total (Figure 2A); increased PD-1-positive cells at the tumor-stroma interface (Figure 2B); and increased CD8-positive, PD-

1-positive T cells intratumorally, at the tumor-stroma interface, and in total (Figure 2C). No significant differences in intratumoral and total Foxp3-positive cells were identified in high-TMB vs low-TMB cancers (Figure 2D). Tumors with high TMB had also increased proportion of tumor cell, immune cell, and total PD-L1-positive cells (eFigure 18 in the Supplement). The linear association between TMB and CD8-positive, Foxp3-positive, PD-1-positive, and PD-L1-positive cells by multiplexed immunofluorescence is shown in eFigures 19 and 20 in the Supplement. Multiplexed immunofluorescence images from 3 representative high-TMB cases and 3 low-TMB low cases are shown in eFigure 21 in the Supplement.

To validate this finding in an independent external cohort, we deconvoluted RNaseq data from the The Cancer Genome Atlas NSCLC data set into tumor-associated cell populations using xCell software (2017 release; Institute for Computational Health Sciences, University of California, San Francisco)<sup>21</sup> and identified that tumors with high TMB had a significantly higher proportion of CD8-positive T central memory cells, M1 macrophages, plasmacytoid dendritic cells, and Th1/Th2 T cells (eFigure 22 in the Supplement).

### TMB Levels and Distinct Mutational Patterns and Transcriptomic Profiles in NSCLC

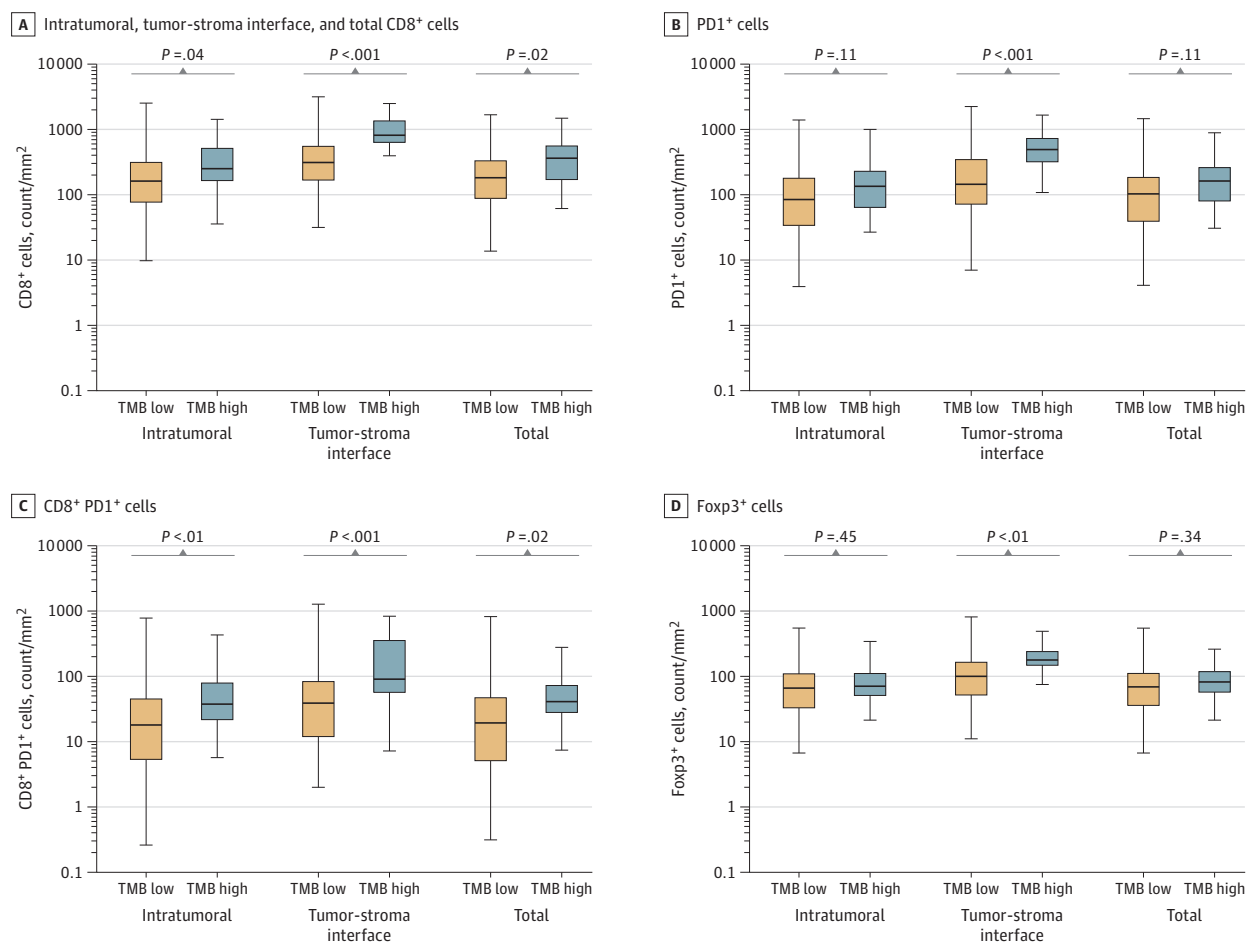
Next, we examined whether these TMB subgroups had different mutational (DFCI) and transcriptomic (The Cancer Genome Atlas) profiles to identify additional factors that may affect tumor immunogenicity. Because nonsquamous and squamous NSCLCs have different genomic profiles and mutation patterns,<sup>22,23</sup> we analyzed these tumors separately. The distribution of the most common mutations in each TMB group are shown in eFigure 23 in the Supplement (nonsquamous NSCLC) and eFigure 24 in the Supplement (squamous NSCLC). Compared with low-TMB nonsquamous NSCLCs, high-TMB tumors were significantly enriched for mutations in *TP53*, *KEAP1*, *BRAF*, and DNA damage repair genes (*ATM*, *BRCA1*, *BRCA2*, *ATR*, and *MSH2*), whereas *EGFR* mutation was enriched among low-TMB tumors ( $Q < 0.05$ ) (eFigure 25A in the Supplement). *KRAS* and *STK11* had a similar prevalence in high vs low TMB nonsquamous NSCLCs. Among squamous cases, those with high TMB were also enriched for mutations in DNA damage repair genes, such as *ATM* and *BRCA1* ( $Q < 0.05$ ) (eFigure 25B in the Supplement). Comutation analysis among high-TMB nonsquamous NSCLCs showed that *KRAS* and *KEAP1* mutations tended to be mutually exclusive, whereas there was no significant co-occurrence of *KRAS/STK11* mutations, in contrast to the low-TMB cohort, in which *KRAS* mutations significantly co-occurred with *STK11* and *KEAP1* (eFigure 26 in the Supplement). This observation is of interest given that concurrent *KRAS/STK11* and *KRAS/KEAP1* comutations have been shown to be associated with resistance to ICI in NSCLC.<sup>24,25</sup> Comutation patterns in high and low TMB cases among squamous cancers are shown in eFigure 27 in the Supplement. These findings were also validated in an independent cohort of 915 nonsquamous NSCLCs sequenced by the MSK-IMPACT platform<sup>18</sup> (eFigure 28 in the Supplement).

We next examined the relative contribution of transversion and transition mutations to the mutational load in each

**Table 2. Objective Response Rate, Progression-Free, and Overall Survival to PD-1/PD-L1 Blockade in High and Low TMB Non-Small Cell Lung Cancer According to PD-L1 Expression Subgroups**

Outcome and PD-L1 tumor proportion score	Low TMB	High TMB	P value
Objective response rate, % (95% CI)			
<1%	8.7 (5.5-12.9)	46.7 (28.3-65.7)	<.001
1%-49%	18.7 (14.1-23.9)	50.0 (31.3-68.7)	<.001
≥50%	38.1 (33.3-43.0)	56.5 (41.1-71.1)	.02
Progression-free survival, median (95% CI), mo			
<1%	2.1 (2.0-2.4)	10.7 (8.2-24.4)	<.001
1%-49%	2.9 (2.5-3.6)	13.6 (8.6-NR)	<.001
≥50%	5.2 (4.6-6.2)	18.1 (8.6-NR)	<.001
Overall survival, median (95% CI), mo			
<1%	10.4 (7.9-13.6)	23.9 (16.7-NR)	.07
1%-49%	11.3 (9.6-14.7)	NR (21.2-NR)	<.001
≥50%	21.4 (17.5-25.9)	47.7 (35.4-NR)	.02

Abbreviations: NR, not reached; PD-1, programmed cell death-1; PD-L1, programmed death ligand-1; TMB, tumor mutation burden.

**Figure 2. Multiplexed Immunofluorescence (ImmunoProfile) Showing Intratumoral, Tumor-Stroma Interface, and Total CD8<sup>+</sup> Cells, PD1<sup>+</sup> Cells, CD8<sup>+</sup> PD1<sup>+</sup> Cells, and Foxp3<sup>+</sup> Cells in Patients With Non-Small Cell Lung Cancer**

Data are from patients in the Dana-Farber Cancer Institute cohort, including 384 patients with low tumor mutation burden (TMB) and 44 patients with high TMB.

TMB grouping in the DFCI next-generation sequencing cohort, as this was previously shown to be associated with outcomes of ICI.<sup>13</sup> The proportion of transversions was highest among tumors with high TMB (eFigure 29A in the [Supple-](#)

[ment](#)). By contrast, tumors with low TMB had the highest proportion of transitions, likely reflecting differences in tobacco exposure (eFigure 29B in the [Supplement](#)). Within the group of high-TMB NSCLCs treated with immunotherapy at DFCI, a

high transversion-transition ratio greater than or equal to 1 could further identify patients with improved PFS (HR, 0.41; 95% CI, 0.18-0.91;  $P = .03$ ) and OS (HR, 0.44; 95% CI, 0.20-0.97;  $P = .04$ ) after ICI, compared with a low transversion-transition ratio (eFigure 30A in the [Supplement](#)). Among tumors with low TMB, a high transversion-transition ratio was associated with improved PFS (HR, 0.81; 95% CI, 0.67-0.97;  $P = .02$ ), but not with OS (HR, 0.85; 95% CI, 0.69-1.04;  $P = .12$ ) (eFigure 30B in the [Supplement](#)).

Finally, we examined whether NSCLCs with different TMB levels demonstrated different transcriptomic profiles using the Cancer Genome Atlas lung adenocarcinoma and lung squamous cell carcinoma data sets. Compared with low-TMB cases, lung adenocarcinomas with high TMB showed marked upregulation of major histocompatibility complex class II antigen presentation and interleukin-7 signaling pathways, gene signatures of activated CD8-positive effector T cells and CD8a dendritic cells, and pathways involved in DNA repair (eg, DNA double-strand break response, base excision repair, and homologous recombination) (eFigure 31A in the [Supplement](#)). Similarly, lung squamous tumors with high TMB had a significant upregulation of pathways involved in antigen processing and presentation, chemokine signaling, and natural killer-cell mediated cytotoxicity, when compared with low-TMB cases (eFigure 31B in the [Supplement](#)). These findings indicate that in NSCLC, high levels of TMB are associated with increased immune cell infiltration and favorable transcriptomic profiles, which may enhance sensitivity to ICI.

## Discussion

Several studies<sup>8,13,14,16</sup> have shown that a higher TMB generally is associated with clinical benefit from ICI. However, since there is variability among sequencing platforms as well as the cutoffs used to define what is considered to be a high TMB value, TMB alone is still not routinely used in NSCLC to make treatment decisions.<sup>13,14,26</sup> In this cohort study, we found that patients with high TMB levels (approximately at the 90th percentile) derived the greatest improvement in terms of response to treatment and survival. Importantly, we extended this observation to PD-L1-negative and PD-L1-positive cases, indicating that TMB is a biomarker of the benefit from immunotherapies across all PD-L1 expression levels.

Several of our findings may explain the mechanistic association between a high TMB and improved clinical outcomes, including higher proportions of tumor-infiltrating, CD8-positive, PD1-positive, T cells, increased PD-L1 tumor expression, upregulation of pathways involved in innate and adaptive immune response, including major histocompatibility complex class II antigen presentation, and a distinct mutational landscape. Importantly, within the subset of patients with high TMB, those with a low transversion-transition ratio experienced significantly shorter survival compared with those with a high ratio, suggesting that the relative contribution of transversions and transitions may be used to identify patients with high TMB who may not respond to immunotherapy.

Consistent with our findings, a recent analysis<sup>7</sup> of 1662 patients with advanced cancers treated with ICI showed that higher somatic TMB (highest 20% in each histologic grade) was associated with better OS. However, in that study, there was variation by cancer type in whether TMB levels were associated with improved survival after receipt of ICIs, highlighting the need to determine how to optimally integrate TMB and other potential biomarkers of response to ICI within specific tumor types. In NSCLC, increasing PD-L1 expression levels on tumor cells generally are associated with response to immunotherapy.<sup>2,5</sup> However, how to integrate TMB and PD-L1 expression to identify likely responders to ICI has been unclear. Previous studies<sup>8,18</sup> exploring a cutoff of 10 mutations per megabase failed to show a significant impact on OS, and our results indicate that a higher TMB threshold closer to the 90th percentile may be necessary to clearly distinguish patients most likely to benefit from immunotherapy.

Here, using the power of a large cohort of immunotherapy-treated patients, which was possible only through a harmonized analysis across different sequencing platforms, we found that high TMB levels were associated with improved ICI efficacy across different PD-L1 expression subgroups, which has important implications. For patients with advanced NSCLC and a PD-L1 tumor proportion score of 1% or higher and 50% or higher, 2 therapeutic regimens are approved for use: ICI alone or in combination with chemotherapy.<sup>1,2,4,27</sup> Because there are no prospective data comparing ICI alone with ICI plus chemotherapy, our results suggest that for patients with PD-L1 tumor proportion score of 1% to 49% or 50% or higher, and very high TMB, ICI may be a reasonable treatment option as monotherapy, sparing the potential toxicities of adding chemotherapy. As high TMB is a robust and independent biomarker of response to ICI, our data also suggest that TMB should routinely be introduced as a stratification factor for immunotherapy clinical trials, to ensure that outcomes are associated with treatment interventions, rather than imbalances in TMB distributions. Importantly, because genomic coverage can differ across sequencing platforms, these trials should use assays that provide at least 0.5 Mb, or optimally 0.8 Mb or more of coverage for sufficient and accurate TMB assessment.

## Limitations

A limitation of this study is its retrospective design. Another limitation is the lack of PD-L1 expression data for a fraction of patients.

## Conclusions

The findings of this cohort study suggest that TMB determination using next-generation sequencing may be a valuable biomarker for estimating immune checkpoint inhibitor efficacy. In addition, integration of TMB with PD-L1 expression may identify patients with the greatest likelihood of response to immunotherapy.

## ARTICLE INFORMATION

**Accepted for Publication:** April 3, 2022.

**Published Online:** June 16, 2022.  
doi:10.1001/jamaoncol.2022.1981

**Correction:** This article was corrected on November 17, 2022, to fix an error in the y-axis label of Figure 1C.

**Open Access:** This is an open access article distributed under the terms of the [CC-BY License](#). © 2022 Ricciuti B et al. *JAMA Oncology*.

**Author Affiliations:** Lowe Center for Thoracic Oncology, Dana-Farber Cancer Institute, Harvard Medical School, Boston, Massachusetts (Ricciuti, Alessi, Polio, Recondo, Lamberti, Lawrence, Vaz, Leonardi, Jänne, Awad); Department of Environmental Health, Harvard T.H. Chan School of Public Health, Harvard University, Boston, Massachusetts (Wang, Christiani); Department of Medicine, Weill Cornell Medical College, Memorial Sloan Kettering Cancer Center, New York, New York (Rizvi, Hellmann); Department of Pathology, Brigham and Women's Hospital, Boston, Massachusetts (Mahadevan); Department of Medical Oncology, Dana-Farber Cancer Institute, Harvard Medical School, Boston, Massachusetts (Li, Gupta, Sholl); Cancer Program, Broad Institute of MIT and Harvard, Cambridge, Massachusetts (Li, Gupta, Cherniack); Knowledge Systems Group, Dana-Farber Cancer Institute, Boston, Massachusetts (Lindsay); Department of Informatics and Analytics, Dana-Farber Cancer Institute, Boston, Massachusetts (Umeton, Sinha, Tolstorukov); Department of Thoracic/Head and Neck Oncology, MD Anderson Cancer Center, Houston, Texas (Vokes); Department of Radiology, Memorial Sloan Kettering Cancer Center, New York, New York (Plodkowski); ImmunoProfile, Brigham and Women's Hospital and Dana-Farber Cancer Institute, Boston, Massachusetts (Sharma, Felt); Department of Medicine, Massachusetts General Hospital Cancer Center, Boston (Gainor); Broad Institute of MIT and Harvard, Cambridge, Massachusetts (Ravi, Getz); Department of Pathology, Yale School of Medicine, New Haven, Connecticut (Schalper); Department of Medicine, Columbia University Medical Center, New York, New York (Henick); The Sidney Kimmel Comprehensive Cancer Center, Johns Hopkins University School of Medicine, Baltimore, Maryland (Forde, Anagnostou); Belfer Center for Applied Cancer Science, Dana-Farber Cancer Institute, Boston, Massachusetts (Jänne); Center for Cancer Precision Medicine, Dana-Farber Cancer Institute, Boston, Massachusetts (Van Allen); Department of Radiology, Brigham and Women's Hospital, Boston, Massachusetts (Nishino); Department of Biostatistics, Harvard T.H. Chan School of Public Health, Harvard University, Boston, Massachusetts (Lin); Center for Immuno-Oncology, Dana-Farber Cancer Institute, Boston, Massachusetts (Rodig).

**Author Contributions:** Drs Ricciuti and Awad had full access to all of the data in the study and take responsibility for the integrity of the data and the accuracy of the data analysis. Drs Ricciuti and Wang are co-first authors. Drs Hellmann and Awad are co-senior authors.

**Concept and design:** Ricciuti, Mahadevan, Polio, Christiani, Hellmann, Awad.

**Acquisition, analysis, or interpretation of data:** Ricciuti, Wang, Alessi, Rizvi, Mahadevan, Li, Polio,

Lindsay, Umeton, Sinha, Vokes, Recondo, Lamberti, Lawrence, Vaz, Leonardi, Plodkowski, Gupta, Cherniack, Tolstorukov, Sharma, Felt, Gainor, Ravi, Getz, Schalper, Henick, Forde, Anagnostou, Jänne, Van Allen, Nishino, Sholl, Lin, Rodig, Hellmann, Awad.

**Drafting of the manuscript:** Ricciuti, Alessi, Vaz, Cherniack, Forde, Jänne, Awad.

**Critical revision of the manuscript for important intellectual content:** Ricciuti, Wang, Rizvi, Mahadevan, Li, Polio, Lindsay, Umeton, Sinha, Vokes, Recondo, Lamberti, Lawrence, Leonardi, Plodkowski, Gupta, Tolstorukov, Sharma, Felt, Gainor, Ravi, Getz, Schalper, Henick, Forde, Anagnostou, Jänne, Van Allen, Nishino, Sholl, Christiani, Lin, Rodig, Hellmann, Awad.

**Statistical analysis:** Ricciuti, Wang, Li, Umeton, Vokes, Lamberti, Gupta, Tolstorukov, Ravi, Christiani, Lin, Awad.

**Obtained funding:** Ricciuti, Gainor, Christiani, Awad.

**Administrative, technical, or material support:** Ricciuti, Polio, Lindsay, Sinha, Lawrence, Vaz, Leonardi, Gainor, Schalper, Henick, Jänne, Van Allen, Awad.

**Supervision:** Alessi, Mahadevan, Cherniack, Tolstorukov, Getz, Van Allen, Hellmann, Awad.

**Conflict of Interest Disclosures:** Dr Mahadevan reported owning stock in AstraZeneca and Roche outside the submitted work. Dr Li reported holding equity in Root Biomedical Services. Dr Vokes reported receiving personal fees from Sanofi/Genzyme and Oncocyte outside the submitted work. Dr Recondo reported receiving grants from Amgen and Janssen and receiving personal fees from Roche, Bayer, Bristol-Myers Squibb, Pfizer, Merck Sharpe & Dohme, and Takeda outside the submitted work. Dr Cherniack reported receiving research support from Bayer outside the submitted work. Dr Gainor reported receiving grants from Mark Foundation and Stand Up To Cancer during the conduct of the study; receiving research support from Novartis, Genentech/Roche, Ariad/Takeda, Bristol-Myers Squibb, Tesaro, Moderna, Blueprint, Jounce, Array Biopharma, Merck, Adaptimmune, Novartis, and Alexo; receiving personal fees from Ariad/Takeda, Oncorus, Regeneron, Gilead, GlydeBio, Bristol-Myers Squibb, Merck, Genentech/Roche, AstraZeneca, Moderna, Blueprint, Loxo/Lilly, Mirati, Pfizer, EMD Serono, iTeos, Novartis, Amgen, Beigene, Nuvalent, Karyopharm, and Silverback Therapeutics outside the submitted work; and having an immediate family member who is an employee with equity at Ironwood Pharmaceuticals. Dr Ravi reported receiving personal fees from Tyra Biosciences and Halo Solutions outside the submitted work. Dr Getz reported receiving grants from Stand Up To Cancer, the Mark Foundation, IBM, and Pharmacyclics outside the submitted work; receiving personal fees from Scorpion Therapeutics; and holding a patent for Polysolver with royalties paid from Neon Therapeutics, a patent pending for predicting response to checkpoint blockade in melanoma, and a patent pending for lung cancer subtypes. Dr Schalper reported receiving personal fees from Moderna Inc, Pierre-Fabre Research Institute, Ono Pharmaceuticals, Dynamo Therapeutics, PeerView, AbbVie, Shattuck Labs, EMD Serono, Clinica Alemana de Santiago, Genmab, Fluidigm, Takeda, Merck Sharpe & Dohme, Bristol-Myers Squibb, AstraZeneca, Agenus, Torque Therapeutics,

Repertoire Therapeutics, OnCusp, and Ariagen; and receiving grants from Navigate Biopharma, Tesaro/GlaxoSmithKline, Moderna Inc, Takeda, Surface Oncology, Pierre-Fabre Research Institute, Merck Sharpe & Dohme, Bristol-Myers Squibb, AstraZeneca, Ribon Therapeutics, Akoya Biosciences, Boehringer-Ingelheim, and Eli Lilly outside the submitted work. Dr Henick reported serving on the advisory boards of AstraZeneca and Ideaya and having a patent pending (63/232,549). Dr Forde reported receiving grants from Stand Up To Cancer and Kyowa during the conduct of the study; receiving research funding to Johns Hopkins University from Corvus and Kyowa; receiving personal fees from Amgen, AstraZeneca, Bristol-Myers Squibb, GI Therapeutics, Novartis, Daiichi, Iteos, Surface Oncology, Merck, Janssen, Genentech, Mirati, Sanofi, and F Star; and serving on data safety monitoring boards for Flame Therapeutics and Polaris. Dr Anagnostou reported receiving grants from AstraZeneca and Bristol-Myers Squibb outside the submitted work. Dr Jänne reported receiving personal fees from Boehringer Ingelheim, Pfizer, AstraZeneca, Roche/Genentech, Ignyta, Chugai Pharmaceutical, Eli Lilly, LOXO Oncology, SFJ Pharmaceuticals, Voronoi, Daiichi Sankyo, Biocartis, Novartis, Sanofi, Takeda, Mirati Therapeutics, Transcenta, Silicon Therapeutics, Syndax, Nuvalent, Bayer, Eisai, Allorion, Accutar Biotech, AbbVie, and Revolution Medicines; and grants from the Mark Foundation for Cancer Research, the American Cancer Society, PUMA, Astellas Pharmaceuticals, AstraZeneca, Boehringer Ingelheim, Takeda Oncology, Revolution Medicines, Eli Lilly, and Daiichi Sankyo outside the submitted work. Dr Van Allen reported receiving personal fees from Tango Therapeutics, Roche, Genentech, Microsoft, Genome Medical, Syapse, Invitae, Monte Rosa Therapeutics, Manifold Bio, Illumina, Enara Bio, Janssen, and Foale & Hoag; receiving grants from Novartis and Bristol-Myers Squibb; and filing institutional patents for chromatin mutations, immunotherapy response, and methods for clinical interpretation. Dr Nishino reported receiving grants from Daiichi Sankyo, AstraZeneca, and Canon Medical Systems Research; and personal fees from Daiichi Sankyo and AstraZeneca outside the submitted work. Dr Sholl reported serving as a consultant for Foghorn Therapeutics, receiving personal fees from EMD Serono, and receiving grants from Genentech outside the submitted work. Dr Rodig reported receiving research funding from Bristol-Myers Squibb, Merck, KITE/Gilead, and Affimed and holding equity in Immunitas Therapeutics. Dr Hellmann reported receiving personal fees from Bristol-Myers Squibb, Achilles, Adagene, Adicet, Arcus, AstraZeneca, Blueprint, DaVolterra, Eli Lilly, Genentech/Roche, Genzyme/Sanofi, Janssen, Immunai, Instil Bio, Mana Therapeutics, Merck, Mirati, Natera, Pact Pharma, Shattuck Labs, and Regeneron; holding equity in Factorial, Avail, and Immunai; owning options in Shattuck Labs and Arcus Options; and having a patent filed by Memorial Sloan Kettering related to the use of tumor mutational burden to predict response to immunotherapy (PCT/US2015/062208; pending and licensed by PGDx). Dr Awad reported serving as a consultant for Achilles, AbbVie, Neon, Maverick, Nektar, and Hegru; receiving grants and personal fees from Genentech, Bristol-Myers Squibb, Merck, AstraZeneca, and Lilly; and receiving



personal fees from Maverick, Blueprint Medicine, Syndax, Ariad, Nektar, Gritstone, ArcherDx, Mirati, NextCure, Novartis, EMD Serono, and NovaRx outside the submitted work. No other disclosures were reported.

**Funding/Support:** Dr Ricciuti was supported by The Conquer Cancer Foundation of the American Society for Clinical Oncology and the Society for Immunotherapy of Cancer. The Stand Up To Cancer/Mark Foundation supported the collection, management, and analysis of the data generated from Stand Up To Cancer lung cancer dataset. This work was supported by the National Cancer Institute (grant 5U01CA209414 to Drs Wang, Lin, and Christiani and grants R35-CA197449, U19-CA203654, and U01-CA209414 to Dr Lin) and the National Human Genome Research Institute (grants U01-HG009088 and U01HG012064 to Dr Lin).

**Role of the Funder/Sponsor:** The funders had no role in the design and conduct of the study; collection, management, analysis, and interpretation of the data; preparation, review, or approval of the manuscript; and decision to submit the manuscript for publication.

## REFERENCES

- Socinski MA, Jotte RM, Cappuzzo F, et al; IMpower150 Study Group. Atezolizumab for first-line treatment of metastatic nonsquamous NSCLC. *N Engl J Med*. 2018;378(24):2288-2301. doi:10.1056/NEJMoa1716948
- Reck M, Rodríguez-Abreu D, Robinson AG, et al; KEYNOTE-024 Investigators. Pembrolizumab versus chemotherapy for PD-L1-positive non-small-cell lung cancer. *N Engl J Med*. 2016;375(19):1823-1833. doi:10.1056/NEJMoa1606774
- Mok TSK, Wu YL, Kudaba I, et al; KEYNOTE-042 Investigators. Pembrolizumab versus chemotherapy for previously untreated, PD-L1-expressing, locally advanced or metastatic non-small-cell lung cancer (KEYNOTE-042): a randomised, open-label, controlled, phase 3 trial. *Lancet*. 2019;393(10183):1819-1830. doi:10.1016/S0140-6736(18)32409-7
- Gandhi L, Rodríguez-Abreu D, Gadgeel S, et al; KEYNOTE-189 Investigators. Pembrolizumab plus chemotherapy in metastatic non-small-cell lung cancer. *N Engl J Med*. 2018;378(22):2078-2092. doi:10.1056/NEJMoa1801005
- Aguilar EJ, Ricciuti B, Gainor JF, et al. Outcomes to first-line pembrolizumab in patients with non-small-cell lung cancer and very high PD-L1 expression. *Ann Oncol*. 2019;30(10):1653-1659. doi:10.1093/annonc/mdz288
- Haragan A, Field JK, Davies MPA, Escriu C, Gruver A, Gosney JR. Heterogeneity of PD-L1 expression in non-small cell lung cancer: implications for specimen sampling in predicting treatment response. *Lung Cancer*. 2019;134:79-84. doi:10.1016/j.lungcan.2019.06.005
- Samstein RM, Lee CH, Shoushtari AN, et al. Tumor mutational load predicts survival after immunotherapy across multiple cancer types. *Nat Genet*. 2019;51(2):202-206. doi:10.1038/s41588-018-0312-8
- Hellmann MD, Ciuleanu TE, Pluzanski A, et al. Nivolumab plus ipilimumab in lung cancer with a high tumor mutational burden. *N Engl J Med*. 2018;378(22):2093-2104. doi:10.1056/NEJMoa1801946
- Ready N, Hellmann MD, Awad MM, et al. First-line nivolumab plus ipilimumab in advanced non-small-cell lung cancer (CheckMate 568): outcomes by programmed death ligand 1 and tumor mutational burden as biomarkers. *J Clin Oncol*. 2019;37(12):992-1000. doi:10.1200/JCO.2018.01042
- Carbone DP, Reck M, Paz-Ares L, et al; CheckMate 026 Investigators. First-line nivolumab in stage IV or recurrent non-small-cell lung cancer. *N Engl J Med*. 2017;376(25):2415-2426. doi:10.1056/NEJMoa1613493
- Vokes NI, Liu D, Ricciuti B, et al. Harmonization of tumor mutational burden quantification and association with response to immune checkpoint blockade in non-small-cell lung cancer. *JCO Precision Oncol*. Published online November 12, 2019. doi:10.1200/PO.19.00171
- Hothorn T, Hornik K, Zeileis A. Unbiased recursive partitioning: a conditional inference framework. *J Comput Graph Stat*. 2006;15(3):651-674. doi:10.1198/106186006X133933
- Rizvi NA, Hellmann MD, Snyder A, et al. Cancer immunology: mutational landscape determines sensitivity to PD-1 blockade in non-small cell lung cancer. *Science*. 2015;348(6230):124-128. doi:10.1126/science.aaa1348
- Rizvi H, Sanchez-Vega F, La K, et al. Molecular determinants of response to anti-programmed cell death (PD)-1 and anti-programmed death-ligand 1 (PD-L1) blockade in patients with non-small-cell lung cancer profiled with targeted next-generation sequencing. *J Clin Oncol*. 2018;36(7):633-641. doi:10.1200/JCO.2017.75.3384
- Gandara DR, Paul SM, Kowanzet M, et al. Blood-based tumor mutational burden as a predictor of clinical benefit in non-small-cell lung cancer patients treated with atezolizumab. *Nat Med*. 2018;24(9):1441-1448. doi:10.1038/s41591-018-0134-3
- Valero C, Lee M, Hoen D, et al. The association between tumor mutational burden and prognosis is dependent on treatment context. *Nat Genet*. 2021;53(1):11-15. doi:10.1038/s41588-020-00752-4
- Davies KD, Le AT, Theodoro MF, et al. Identifying and targeting *ROS1* gene fusions in non-small cell lung cancer. *Clin Cancer Res*. 2012;18(17):4570-4579. doi:10.1158/1078-0432.CCR-12-0550
- McGrail DJ, Pilié PG, Rashid NU, et al. High tumor mutation burden fails to predict immune checkpoint blockade response across all cancer types. *Ann Oncol*. 2021;32(5):661-672. doi:10.1016/j.annonc.2021.02.006
- Cole SR, Hernán MA. Constructing inverse probability weights for marginal structural models. *Am J Epidemiol*. 2008;168(6):656-664. doi:10.1093/aje/kwn164
- van Buuren S, Groothuis-Oudshoorn K. mice: Multivariate imputation by chained equations in R. *J Stat Softw*. 2011;45(3). doi:10.18637/jss.v045.i03
- Aran D, Hu Z, Butte AJ. xCell: digitally portraying the tissue cellular heterogeneity landscape. *Genome Biol*. 2017;18(1):220. doi:10.1186/s13059-017-1349-1
- Collisson EA, Campbell JD, Brooks AN, et al; Cancer Genome Atlas Research Network. Comprehensive molecular profiling of lung adenocarcinoma. *Nature*. 2014;511(7511):543-550. doi:10.1038/nature13385
- Hammerman PS, Voet D, Lawrence MS, et al; Cancer Genome Atlas Research Network. Comprehensive genomic characterization of squamous cell lung cancers. *Nature*. 2012;489(7417):519-525. doi:10.1038/nature11404
- Ricciuti B, Arbour KC, Lin JJ, et al. Diminished efficacy of programmed death-(ligand)1 inhibition in *STK11*- and *KEAP1*-mutant lung adenocarcinoma is affected by *KRAS* mutation status. *J Thorac Oncol*. 2022;17(3):399-410. doi:10.1016/j.jtho.2021.10.013
- Arbour KC, Jordan E, Kim HR, et al. Effects of co-occurring genomic alterations on outcomes in patients with *KRAS*-mutant non-small cell lung cancer. *Clin Cancer Res*. 2018;24(2):334-340. doi:10.1158/1078-0432.CCR-17-1841
- Rizvi NA, Cho BC, Reinmuth N, et al. Durvalumab with or without tremelimumab vs standard chemotherapy in first-line treatment of metastatic non-small cell lung cancer: the MYSTIC phase 3 randomized clinical trial. *JAMA Oncol*. 2020;6(5):661-674. doi:10.1001/jamaoncol.2020.0237
- Paz-Ares L, Luft A, Vicente D, et al; KEYNOTE-407 Investigators. Pembrolizumab plus chemotherapy for squamous non-small-cell lung cancer. *N Engl J Med*. 2018;379(21):2040-2051. doi:10.1056/NEJMoa1810865