

Immune Checkpoint Inhibitor Therapy in Patients With Preexisting Inflammatory Bowel Disease

Hamzah Abu-Sbeih, MD¹; David M. Faleck, MD²; Biagio Ricciuti, MD^{3,4}; Robin B. Mendelsohn, MD²; Abdul R. Naqash, MD⁵; Justine V. Cohen, DO^{6,7}; Maclean C. Sellers, MD, PhD^{6,7}; Aanika Balaji, MD⁸; Guy Ben-Betzalel, MD⁹; Ibraheim Hajir, MBChB¹⁰; Jiajia Zhang, MD, MPH⁸; Mark M. Awad, MD, PhD⁴; Giulia C. Leonardi, MD^{4,11}; Douglas B. Johnson, MD, MSCI¹²; David J. Pinato, MD, MRes, MRCP, PhD¹³; Dwight H. Owen, MD, MS¹⁴; Sarah A. Weiss, MD¹⁵; Giuseppe Lamberti, MD¹⁶; Mark P. Lythgoe, MPharm, MBBS¹³; Lisa Manuzzi, MD¹⁶; Christina Arnold, MD¹⁴; Wei Qiao, PhD¹; Jarushka Naidoo, MBBCh⁸; Gal Markel, MD, PhD⁹; Nick Powell, PhD, MBChB¹⁰; Sai-Ching J. Yeung, MD¹; Elad Sharon, MD, MPH¹⁷; Michael Dougan, MD, PhD^{6,7}; and Yinghong Wang, MD, PhD¹

PURPOSE The risk of immune checkpoint inhibitor therapy–related GI adverse events in patients with cancer and inflammatory bowel disease (IBD) has not been well described. We characterized GI adverse events in patients with underlying IBD who received immune checkpoint inhibitors.

PATIENTS AND METHODS We performed a multicenter, retrospective study of patients with documented IBD who received immune checkpoint inhibitor therapy between January 2010 and February 2019. Backward selection and multivariate logistic regression were conducted to assess risk of GI adverse events.

RESULTS Of the 102 included patients, 17 received therapy targeting cytotoxic T-lymphocyte antigen-4, and 85 received monotherapy targeting programmed cell death 1 or its ligand. Half of the patients had Crohn's disease, and half had ulcerative colitis. The median time from last active IBD episode to immunotherapy initiation was 5 years (interquartile range, 3-12 years). Forty-three patients were not receiving treatment of IBD. GI adverse events occurred in 42 patients (41%) after a median of 62 days (interquartile range, 33-123 days), a rate higher than that among similar patients without underlying IBD who were treated at centers participating in the study (11%; $P < .001$). GI events among patients with IBD included grade 3 or 4 diarrhea in 21 patients (21%). Four patients experienced colonic perforation, 2 of whom required surgery. No GI adverse event–related deaths were recorded. Anti–cytotoxic T-lymphocyte antigen-4 therapy was associated with increased risk of GI adverse events on univariable but not multivariable analysis (odds ratio, 3.19; 95% CI, 1.8 to 9.48; $P = .037$; and odds ratio, 4.72; 95% CI, 0.95 to 23.53; $P = .058$, respectively).

CONCLUSION Preexisting IBD increases the risk of severe GI adverse events in patients treated with immune checkpoint inhibitors.

J Clin Oncol 38:576-583. © 2019 by American Society of Clinical Oncology

Licensed under the Creative Commons Attribution 4.0 License 

INTRODUCTION

Immunotherapy targeting the immune checkpoint receptors cytotoxic T-lymphocyte antigen-4 (CTLA-4), programmed cell death 1 (PD-1), and programmed death ligand 1 (PD-L1) has proven effective in prolonging the survival of patients with a variety of advanced malignancies.¹⁻³ Because CTLA-4 and PD-1/PD-L1 are fundamental regulators of immunity, such treatment can lead to a wide spectrum of inflammatory toxicities, collectively termed immune-related adverse events. These toxicities can involve any organ system, limit immunotherapy, and, in rare cases, be fatal.⁴⁻⁶ The molecular and cellular mechanisms driving immune-related adverse events are poorly understood, as are predisposing risk factors. Out of concern that patients with underlying autoimmune disease are at increased risk for developing severe immune-related adverse events, they have systematically been excluded from checkpoint inhibitor clinical trials.⁵⁻⁷

Inflammation of the small intestinal and colonic mucosa (immune-mediated enterocolitis) is one of the most common adverse events associated with CTLA-4 or PD-1/PD-L1 inhibition.^{5,8,9} Immune-mediated enterocolitis is a distinct clinical and pathologic entity but has many features resembling inflammatory bowel diseases (IBDs), such as ulcerative colitis and Crohn's disease.^{5,8,9} The roles of CTLA-4 and PD-1/PD-L1 in IBD are unclear. CTLA-4 haploinsufficiency is associated with severe inflammation in the GI tract, among other organs,¹⁰⁻¹² and polymorphisms in the *CTLA-4* gene have been linked to ulcerative colitis risk in Asian populations.¹³ PD-1 and PD-L1 are expressed by the colonic epithelium, and surface expression of PD-1/PD-L1 is higher in patients with IBD, suggesting a potential regulatory function.^{14,15}

Several meta-analyses have suggested retrospectively that immune checkpoint inhibitors are generally

ASSOCIATED CONTENT

Listen to the podcast by Dr Tsai at <http://ascopubs.org/jco/podcasts>

Appendix

Author affiliations and support information (if applicable) appear at the end of this article.

Accepted on October 16, 2019 and published at ascopubs.org/journal/jco on December 4, 2019; DOI <https://doi.org/10.1200/JCO.19.01674>

safe in patients with low active or untreated autoimmune diseases treated with either the CTLA-4 inhibitor ipilimumab or PD-1/PD-L1 inhibitors.¹⁶⁻¹⁹ These reports are limited by heterogeneity among the autoimmune diseases reported.¹⁶⁻¹⁹ The risk of GI adverse events in patients with underlying IBD who receive immunotherapy has been low in the few published studies¹⁶⁻²⁰; however, with small numbers of patients and insufficient clinical characterization of the underlying IBD, the generalizability of these findings is limited, especially in patients with more active IBD. Because patients with IBD are at increased risk of several malignancies that are indications for immunotherapy, understanding how immunotherapy affects patients with IBD is critical and may further elucidate the roles of these immune regulatory pathways in IBD.²¹⁻²⁴

PATIENTS AND METHODS

Patient Population

We performed an international, multicenter, retrospective cohort study of patients with cancer and underlying IBD who received immune checkpoint inhibitor therapy between January 2010 and February 2019. Appendix Table A1 (online only) lists the participating centers. Approval was obtained from the participating institutions' institutional review boards. Thereafter, a universal data collection protocol was used among all centers to facilitate congruence of collected variables. Patients were included only if they had clear documentation of underlying IBD (ie, proven histologically or treated medically with IBD-specific therapy). A search for eligible patients using institutional databases (eg, pharmacy, gastroenterology clinic, oncology clinic, and investigational new drugs) and tumor registries was completed, followed by a comprehensive chart review. To compare the rate of GI adverse events, we included a control cohort of patients without underlying IBD who received immune checkpoint inhibitor therapy at some of the participating institutions (Appendix Table A1) and documented the type of immunotherapy received and the rate of GI adverse events. Determination of presence and grade of GI adverse events in the control group was done in a similar fashion to that of patients with IBD; institutional databases were searched, followed by thorough chart review to confirm the diagnosis.

Clinical Characteristics

Clinical data consisted of demographics, oncologic and medical history, and Charlson comorbidity index score.²⁵ These data were extrapolated retrospectively from medical charts. Variables related to oncologic history included cancer type and stage at the time of immunotherapy initiation, immune checkpoint inhibitor type, treatment duration, and non-GI immune-related adverse events.

IBD Assessment

IBD was classified as Crohn's disease, ulcerative colitis, or unclassified. The time between IBD diagnosis or last active IBD episode and immunotherapy initiation was reported. IBD treatment within 3 months before immunotherapy initiation was categorized as mesalamine, immunosuppressive (eg, glucocorticoids, infliximab, vedolizumab, ustekinumab, adalimumab, azathioprine, mercaptopurine), or none. Findings of the last available endoscopic evaluation were noted, and endoscopic presentation was categorized as mild, moderate, or severe in a similar fashion as that used for ulcerative colitis (ie, using the Mayo score in patients with ulcerative colitis and based on the clinician impression in patients with Crohn's disease).²⁶ We also documented the presence of IBD-related complications (ie, colonic stricture, fistula, perforation, GI cancer), surgical interventions, or extraintestinal manifestations before immunotherapy, as well as the distribution of IBD in the GI tract.

GI Adverse Events

Recorded GI adverse events consisted of diarrhea, colitis, nausea, and vomiting. We recorded time from immunotherapy initiation to GI symptom onset (if any); peak grade of diarrhea and colitis according to the Common Terminology Criteria for Adverse Events version 5.0²⁷; requirement for hospitalization or intensive care unit admission; treatment of GI adverse events; cumulative duration of symptoms, hospitalization, and corticosteroid treatment; endoscopic presentation; colonic perforation with or without surgical intervention; recurrence of symptoms; and time from resolution of first episode to recurrence.

Statistical Analysis

A descriptive summary of continuous variables using medians and interquartile ranges (IQRs) and of categorical variables using frequencies and percentages was performed. Fisher's exact test was used to compare categorical variables, and the Wilcoxon rank sum test was used to compare continuous variables. A univariable logistic regression analysis was conducted to assess for risk factors of GI adverse events. Multivariable analyses with backward model selection were performed to assess for independent risk factors for GI adverse events. The Hosmer-Lemeshow test was used to check the goodness of fit for the final model, with a $P = .14$ indicating good fit. Statistical tests were 2-sided. A $P = .05$ was used as a threshold for statistical significance. Statistical analyses were performed using SPSS version 24.0 (SPSS, Chicago, IL) and SAS version 9.4 (SAS Institute, Cary, NC).

RESULTS

Patients

A total of 102 patients with cancer and IBD received immunotherapy with CTLA-4 or PD-1/PD-L1 inhibitors and were included in the study. Patient characteristics are listed

TABLE 1. Patient Characteristics

Characteristic	No. of Patients (%; N = 102)*
Median age at time of immunotherapy initiation, years (IQR)	65 (54-74)
Male sex	69 (68)
White race	94 (92)
Median Charlson comorbidity index (IQR)	10 (9-11)
Smoking	
Current	2 (2)
Previous	56 (55)
NSAID use	38 (37)
Cancer type	
Melanoma	45 (44)
Lung	23 (23)
GI	17 (17)
GU	7 (7)
Head and neck	4 (4)
Other	6 (6)
Cancer stage	
III	5 (5)
IV	97 (95)
Checkpoint inhibitor type	
CTLA-4	7 (7)
PD-1/PD-L1	85 (83)
Combination	10 (10)
Median length of immunotherapy treatment, days (IQR)	64 (24-161)
Reason to stop immunotherapy (n = 100)	
GI adverse event†	23 (23)
Disease progression	30 (30)
Other adverse events	9 (9)
Death or lost to follow-up	13 (13)
Complete treatment course	25 (25)
Non-GI adverse events	
Skin	12 (12)
Lungs	4 (4)
Liver	3 (3)
Joints	3 (3)
Endocrine	3 (3)
Other‡	6 (6)
Median follow-up duration, months (IQR)	7 (3-20)

Abbreviations: CTLA, cytotoxic T-lymphocyte antigen; GU, genitourinary; IQR, interquartile range; NSAID, nonsteroidal anti-inflammatory drug; PD-1, programmed cell death 1; PD-L1, programmed death ligand 1.

*Values are numbers and percentages unless otherwise noted.

†GI adverse events were defined according to the Common Terminology Criteria for Adverse Events version 5.0.

‡Other non-GI adverse events consisted of eye (n = 1), pancreas (n = 2), heart (n = 2), and hematologic toxicity (n = 1).

in Table 1. Most patients (83%) received PD-1/PD-L1 inhibitor monotherapy.

Underlying IBD

The study included 49 patients with Crohn's disease, 49 with ulcerative colitis, and 4 with unclassified IBD (Table 2). The median time from last active IBD episode to immunotherapy initiation was 5 years (IQR, 3-12 years). Forty-two percent of patients had not received IBD treatment within the 3 months before immunotherapy (Appendix Table A2, online only). Most patients with available endoscopy data before immunotherapy had normal findings (29 of 48 patients; 60%) on the most recent endoscopy before immunotherapy, with a median time from endoscopy to immunotherapy of 17 months.

GI Adverse Events

Of the 102 patients, 42 (41%) had a GI adverse event after a median of 62 days (IQR, 33-123 days) after immunotherapy initiation (Table 3; Appendix Fig A1, online only), and 23 of these patients stopped immunotherapy because of GI adverse events. Of the 41 patients who experienced diarrhea, half (51%) had a peak grade of diarrhea of 3 or 4. Most patients (76%) received glucocorticoids, with 29% requiring treatment escalation to include infliximab or vedolizumab. One patient received adalimumab and 1 patient received mesalamine for a GI adverse event. Of the 32 patients who underwent endoscopy for adverse events, 38% had mucosal ulceration and 44% had nonulcerative inflammation.

In patients without IBD, the overall rate of GI adverse events of any grade was 11% (1,283 patients had a GI adverse event of the 11,377 patients who received either CTLA-4 [18%] or PD-1/PD-L1 [82%] inhibitors). The proportion of GI adverse events of any grade in patients with preexisting IBD was significantly higher than that of patients without underlying IBD (41% v 11%, respectively; $P < .001$).

Colonic perforation occurred in 4 patients (2 with ulcerative colitis and 2 with Crohn's disease); 2 of these patients were treated conservatively, and 2 underwent surgery. The patients who experienced colonic perforation received glucocorticoids without infliximab or vedolizumab before the perforation. Of these 4 patients, 3 had received anti-PD-1/PD-L1 monotherapy and 1 had received combined anti-CTLA-4 and anti-PD-1/PD-L1 therapy.

Among the 42 patients who experienced adverse events, 15 experienced an additional episode of GI symptoms after a median of 105 days (IQR, 53-209 days) from resolution of the first episode. No GI toxicity-related deaths were recorded in the study.

Rate and grade of GI adverse events according to endoscopic presentation of IBD at time of immune checkpoint

TABLE 2. Baseline IBD Data

Characteristic	No. of Patients (%; N = 102)*
Type of IBD	
Crohn's disease	49 (48)
Ulcerative colitis	49 (48)
Unclassified	4 (4)
Median time from IBD diagnosis to immunotherapy initiation, years (IQR)	19 (8-28)
Median time from last active IBD episode to immunotherapy initiation, years (IQR)	5 (3-12)
IBD treatment at time of immunotherapy initiation	
Mesalamine	37 (36)
Immunosuppressive†	22 (22)
None	43 (42)
Severity of endoscopic findings of IBD before immunotherapy initiation (n = 48)	
Normal	29 (60)
Mild	12 (25)
Moderate	5 (10)
Severe	2 (4)
Complications from IBD‡	21 (21)
Surgery for IBD	28 (28)
Extraintestinal manifestation§	10 (10)
Extent of IBD (n = 75)	
Small bowel	15 (20)
Colon	50 (67)
Both	10 (13)

Abbreviations: IBD, inflammatory bowel disease; IQR, interquartile range.

*Values are numbers and percentages unless otherwise noted.

†Immunosuppressive therapy includes corticosteroid, vedolizumab, ustekinumab, adalimumab, azathioprine, and mercaptopurine.

‡Complications of IBD include colonic stricture, fistula, perforation, and GI cancer.

§Extraintestinal manifestation of IBD consisted of arthritis in 5 patients, blood clot in 2 patients, nephrolithiasis in 1 patient, and primary sclerosing cholangitis in 2 patients.

inhibitor initiation are shown in Appendix Figure A2 (online only). Of the 28 patients who had undergone surgical intervention for IBD before immunotherapy, 25% had GI adverse events. Of the 15 patients who had isolated small bowel involvement, only 1 patient developed a GI adverse event.

In univariable analysis, anti-CTLA-4 therapy (either monotherapy or combination therapy) was associated with a higher risk of GI adverse events compared with anti-PD-1/PD-L1 therapy (odds ratio, 3.19; 95% CI, 1.8 to 9.48; $P = .037$). We did not observe any other factors with a significant association (Table 4). In multivariable logistic regression, none of the variables reached statistical significance. Nonetheless, anti-CTLA-4 therapy (odds

ratio, 4.72; 95% CI, 0.95 to 23.53; $P = .058$) and IBD involving the colon (odds ratio, 3.61; 95% CI, 0.85 to 15.27; $P = .081$) showed tendency for an increased risk of GI adverse events (Table 5). Patients who had active IBD within 3 months before immunotherapy initiation had higher grades of diarrhea compared with patients with inactive IBD ($P = .027$; Appendix Table A3, online only). No significant differences in clinical severity of GI adverse events were observed between patients who received IBD treatment at time of immune checkpoint inhibitor initiation and those who did not (Appendix Table A4, online only).

Cancer Outcome

In this cohort, 53 patients (52%) had progressive disease at the end of immune checkpoint inhibitor therapy; the rest had either stable disease or complete or partial response to immunotherapy.

DISCUSSION

This is the largest multicenter study to date examining the risk of GI adverse events in patients with cancer and underlying IBD who received immunotherapy with CTLA-4 or PD-1/PD-L1 inhibitors. We observed a 41% rate of GI adverse events in the study cohort, which was considerably higher than the expected incidence of GI adverse events in patients without preexisting IBD and higher than that observed in a control cohort without IBD. In addition, patients with preexisting IBD had a high rate of severe GI adverse events (ie, high grades of diarrhea and colitis, frequent requirement for infliximab or vedolizumab, high rates of colonic perforation requiring surgical intervention, and frequent recurrence). Nonetheless, no deaths caused by GI toxicity were recorded. The clinical benefit rate of immune checkpoint inhibitor therapy was similar to that reported in clinical trials.²⁸⁻³¹

Our findings differ from previous reports of immunotherapy in patients with underlying IBD. Prior retrospective analyses evaluating patients with underlying autoimmune diseases included small numbers of patients with IBD.¹⁶⁻¹⁸ In addition, minimal data on IBD histories and prior diagnostic evaluations were provided. We have provided substantially more clinical details on IBD and GI adverse events than those previously reported, thereby substantiating the diagnosis of IBD, reducing the impact of selection bias, and facilitating the application of our results to other clinical situations.

In our study, anti-CTLA-4 therapy was not associated with a significantly increased risk of GI adverse events compared with anti-PD-1/PD-L1 therapy; however, this association was significant in the univariable analysis and showed a tendency toward significance in the multivariable analysis. The lack of significance of this finding may result from the small number of patients receiving anti-CTLA-4 therapy in our cohort (17%), potentially because of

TABLE 3. Characteristics of GI Adverse Events

Characteristic	No. of Patients (%; n = 42)*
Median time from immunotherapy to GI adverse event, days (IQR)	62 (33-123)
Highest grade of diarrhea (n = 41)	
1	5 (12)
2	15 (37)
3	15 (37)
4	6 (15)
Highest grade of colitis (n = 37)	
1	4 (11)
2	16 (43)
3	14 (38)
4	3 (8)
Median duration of symptoms, days (IQR)	17 (9-35)
Hospitalization	22 (52)
Median duration of hospitalization, days (IQR)	5 (3-9)
ICU admission	2 (5)
Treatment of GI adverse events	
Symptomatic treatment only	10 (24)
Corticosteroid	32 (76)
Infliximab/vedolizumab added	12 (29)
Median overall duration of corticosteroid treatment, days (IQR)	31 (9-60)
Endoscopic presentation (n = 32)	
Mucosal ulceration	12 (38)
Nonulcerative inflammation	14 (44)
Normal	6 (19)
Active histologic inflammation (n = 32)	
Colonic perforation	4 (10)
Surgical intervention	2 (5)
Subsequent recurrent GI adverse event	15 (36)
Median time from index GI adverse event to recurrence, days (IQR)	105 (53-209)
Treatment of GI adverse event recurrence (n = 15)	
Corticosteroid	6 (40)
Infliximab/vedolizumab added	5 (33)
Symptomatic only	4 (27)
Mortality as a result of GI adverse event	0 (0)

NOTE. GI adverse events were defined according to the Common Terminology Criteria for Adverse Events version 5.0.

Abbreviations: ICU, intensive care unit; IQR, interquartile range.

*Values are numbers and percentages unless otherwise noted.

concerns about the risk of using CTLA-4 inhibitors in this population. However, we cannot exclude the possibility that both CTLA-4 and PD-1/PD-L1 play similar key roles in IBD regulation, although mucosal homeostasis is largely controlled by CTLA-4 in the healthy gut.⁵ Johnson et al¹⁶ reported that ipilimumab was associated with a moderate risk

for GI adverse events, with 2 of 6 patients having an IBD flare. PD-1 inhibitors were not associated with GI adverse events in any of the 12 patients with IBD from 2 retrospective cohorts.^{17,18}

Although no fatalities were reported, the rate of colonic perforation in the current cohort is higher than the published risk of colonic perforation in patients with immune-mediated enterocolitis (approximately 2%).³² This finding underscores the importance of monitoring patients with IBD on immunotherapy, who are at increased risk of serious GI complications, to allow for early identification and initiation of therapy for GI adverse events. Moreover, thorough evaluation of patients with IBD who develop a suspected GI toxicity is critical to ensure appropriate management. Even in patients without IBD, endoscopic and histologic assessment can help guide appropriate management.^{9,32} Early introduction of infliximab or vedolizumab is associated with improved outcomes in immune-mediated enterocolitis, principally in patients with severe endoscopic and histologic presentation.³³ Although rare, immune-mediated enterocolitis that is refractory to immunosuppressive therapy may respond to fecal microbiota transplantation.³⁴

The rate of GI adverse events was high in the current study, yet the benefits of immunotherapy in this population likely outweighed the risks. We observed no GI-related deaths, and the overall response rate in our cohort was high and consistent with published response rates for immunotherapy. Future studies with long-term follow-up controlling for tumor type and other covariates are needed to assess cancer response in patients with IBD who experience GI adverse events.

Although we found that active IBD within 3 months before immune checkpoint inhibitor therapy was not associated with significant risk of GI adverse events, patients with active IBD had more severe GI adverse events. Therefore, appropriate treatment of the underlying IBD before immunotherapy initiation may be beneficial, optimally with endoscopic confirmation of mucosal healing. However, whether to withhold immunotherapy until IBD remission in a patient with active cancer remains an open question. In a recent report, the resumption of immune checkpoint inhibitor therapy after the resolution of immune-related GI adverse events was associated with a 33% risk of adverse event recurrence, suggesting a pattern similar to IBD.³⁵

The effect of concurrent IBD therapy alongside immunotherapy could not be delineated in the current analysis because of the heterogeneity of treatments and study size; this approach is worth additional investigation in a prospective effort. Similarly, whether surgical removal of the involved part of the GI tract is protective against GI adverse events could not be definitively established here, although we found that the rate of GI adverse events was numerically

TABLE 4. Univariable Logistic Regression for GI Adverse Event

Characteristics	Odds Ratio	95% CI	P
Age	0.99	0.96 to 1.02	.455
Male	1.35	0.57 to 3.16	.495
White	2.22	0.43 to 11.59	.343
Anti-CTLA-4	3.19	1.08 to 9.48	.037
Crohn's disease	0.77	0.34 to 1.74	.536
Time from IBD diagnosis to immunotherapy	0.97	0.94 to 1.01	.106
Time from last active IBD to immunotherapy	0.95	0.89 to 1.02	.183
Active IBD within 3 months of immunotherapy	1.53	0.52 to 4.46	.437
IBD treatment at time of immunotherapy			
Mesalamine	1.53	0.54 to 4.31	.421
Selective immunosuppressive	0.93	0.38 to 2.30	.877
Colon involvement	3.50	0.90 to 13.68	.072
Prior IBD surgery	0.73	0.29 to 1.79	.491
Complication of IBD	0.85	0.32 to 2.28	.748
Extraintestinal involvement	1.49	0.40 to 5.49	.552
Endoscopic severity	1.55	0.76 to 3.17	.226

NOTE. GI adverse events were defined according to the Common Terminology Criteria for Adverse Events version 5.0. Abbreviations: CTLA, cytotoxic T-lymphocyte antigen; IBD, inflammatory bowel disease.

lower (25%) in such patients. Although the numbers were limited, 5 of the 7 patients with moderate to severe endoscopic findings before immunotherapy initiation had GI adverse events. Future prospective studies should assess the utility of endoscopic evaluation in the decision to initiate immune checkpoint inhibitor therapy in patients with preexisting IBD.

The study has several limitations. First, the retrospective nature could have led to incomplete data collection, particularly of medication- and endoscopy-related variables, because many patients' gastroenterologic care was provided outside of the cancer centers in this study. Second, because IBD was an exclusion criterion for most clinical trials involving immunotherapy, the decision to give immune checkpoint inhibitor therapy was at the discretion of the treating oncologist and was not standardized. Therefore, the rate of GI adverse events could have been higher if

patients with severe, active IBD were given immunotherapy, because the majority of patients in our cohort had inactive disease at the time of treatment. Fewer patients in our cohort were receiving IBD therapy (58%) compared with patients nationally (approximately 75%), indicative of selection for patients with mild disease.³⁶ Third, given the macroscopic and microscopic similarities between immune-mediated enterocolitis and an IBD flare, these occurrences could not be distinguished from each other. Fourth, although having data from multiple institutions allows for generalizability, treatment standards differed among centers, especially in the absence of guidelines, which could have affected the outcomes of GI adverse events. Fifth, despite being the largest cohort to date, our sample size limited our ability to perform advanced and subgroup analyses. Last, our cohort comprised patients with various cancer types, precluding definitive cancer outcome analyses.

In conclusion, our findings suggest a role for both CTLA-4 and PD-1/PD-L1 in the pathogenesis of IBD and indicate that preexisting IBD increases the risk of severe GI adverse events in patients treated with immune checkpoint inhibitors. Specifically, anti-CTLA-4 therapy and IBD involving the colon before immunotherapy initiation were possible risk factors for GI toxicities. Nonetheless, response to immune checkpoint inhibitor therapy in patients with underlying IBD is comparable to what is reported in non-IBD patients, emphasizing the potential clinical benefit. Future large-scale prospective studies are warranted to clarify our findings.

TABLE 5. Multivariable Logistic Regression Using Backward Model Selection for GI Adverse Events

Characteristics	Odds Ratio	95% CI	P
Anti-CTLA-4	4.72	0.95 to 23.53	.058
Colon involvement	3.61	0.85 to 15.27	.081
Time from IBD diagnosis to immunotherapy	0.98	0.94 to 1.01	.190
Prior IBD surgery	0.56	0.19 to 1.67	.290

NOTE. GI adverse events were defined according to the Common Terminology Criteria for Adverse Events version 5.0.

Abbreviations: CTLA, cytotoxic T-lymphocyte antigen; IBD, inflammatory bowel disease.

AFFILIATIONS

¹The University of Texas MD Anderson Cancer Center, Houston, TX

²Memorial Sloan Kettering Cancer Center, New York, NY

³Dana-Farber Cancer Institute, Boston, MA

⁴University of Perugia, Perugia, Italy

⁵East Carolina University, Greenville, NC

⁶Massachusetts General Hospital, Boston, MA

⁷Harvard Medical School, Boston, MA

⁸Johns Hopkins University, Baltimore, MD

⁹Sheba Medical Center, Tel Aviv, Israel

¹⁰Kings College London, London, United Kingdom

¹¹University of Catania, Catania, Italy

¹²Vanderbilt University Medical Center, Nashville, TN

¹³Imperial College London, Hammersmith Hospital Campus, London, United Kingdom

¹⁴The Ohio State University, Columbus, OH

¹⁵Yale University, New Haven, CT

¹⁶Policlinico di Sant'Orsola University Hospital, Bologna University, Bologna, Italy

¹⁷National Cancer Institute, Bethesda, MD

CORRESPONDING AUTHOR

Yinghong Wang, MD, PhD, Department of Gastroenterology, Hepatology, and Nutrition, Unit 1466, The University of Texas MD Anderson Cancer Center, 1515 Holcombe Blvd, Houston, TX 77030; e-mail: ywang59@mdanderson.org.

EQUAL CONTRIBUTION

H.A.-S. and D.M.F. are co-first authors, and M.D. and Y.W. are co-senior authors.

Data sharing statement: Individual participant data that underlie the results reported in this article, after deidentification (text, tables, figures,

and appendices), and the study protocol are available to researchers who provide a methodologically sound proposal.

AUTHORS' DISCLOSURES OF POTENTIAL CONFLICTS OF INTEREST AND DATA AVAILABILITY STATEMENT

Disclosures provided by the authors and data availability statement (if applicable) are available with this article at DOI <https://doi.org/10.1200/JCO.19.01674>.

AUTHOR CONTRIBUTIONS

Conception and design: Hamzah Abu-Sbeih, David M. Faleck, Mark M. Awad, Elad Sharon, Michael Dougan, Yinghong Wang

Administrative support: Elad Sharon

Provision of study materials or patients: Mark M. Awad, David J. Pinato, Sarah A. Weiss, Jarushka Naidoo, Gal Markel, Nick Powell, Elad Sharon, Michael Dougan, Yinghong Wang

Collection and assembly of data: Hamzah Abu-Sbeih, David M. Faleck, Biagio Ricciuti, Robin B. Mendelsohn, Abdul R. Naqash, Justine V. Cohen, Maclean C. Sellars, Aanika Balaji, Guy Ben-Betzalel, Ibraheem Hajir, Jiajia Zhang, Mark M. Awad, Giulia C. Leonardi, Douglas B. Johnson, David J. Pinato, Dwight H. Owen, Sarah A. Weiss, Giuseppe Lamberti, Mark P. Lythgoe, Lisa Manuzzi, Christina Arnold, Jarushka Naidoo, Gal Markel, Nick Powell, Elad Sharon, Michael Dougan, Yinghong Wang

Data analysis and interpretation: Hamzah Abu-Sbeih, David M. Faleck, Maclean C. Sellars, Jiajia Zhang, Mark M. Awad, David J. Pinato, Dwight H. Owen, Mark P. Lythgoe, Christina Arnold, Wei Qiao, Jarushka Naidoo, Sai-Ching J. Yeung, Elad Sharon, Michael Dougan, Yinghong Wang

Manuscript writing: All authors

Final approval of manuscript: All authors

Accountable for all aspects of the work: All authors

REFERENCES

1. Topalian SL, Drake CG, Pardoll DM: Immune checkpoint blockade: A common denominator approach to cancer therapy. *Cancer Cell* 27:450-461, 2015
2. Postow MA, Callahan MK, Wolchok JD: Immune checkpoint blockade in cancer therapy. *J Clin Oncol* 33:1974-1982, 2015
3. Baumeister SH, Freeman GJ, Dranoff G, et al: Coinhibitory pathways in immunotherapy for cancer. *Annu Rev Immunol* 34:539-573, 2016
4. Wang DY, Salem JE, Cohen JV, et al: Fatal toxic effects associated with immune checkpoint inhibitors: A systematic review and meta-analysis. *JAMA Oncol* 4:1721-1728, 2018
5. Dougan M: Checkpoint blockade toxicity and immune homeostasis in the gastrointestinal tract. *Front Immunol* 8:1547, 2017
6. Postow MA, Sidlow R, Hellmann MD: Immune-related adverse events associated with immune checkpoint blockade. *N Engl J Med* 378:158-168, 2018
7. Martins F, Sofiya L, Sykiotis GP, et al: Adverse effects of immune-checkpoint inhibitors: Epidemiology, management and surveillance. *Nat Rev Clin Oncol* 16:563-580, 2019
8. Geukes Foppen MH, Rozeman EA, van Wilpe S, et al: Immune checkpoint inhibition-related colitis: Symptoms, endoscopic features, histology and response to management. *ESMO Open* 3:e000278, 2018
9. Wang Y, Abu-Sbeih H, Mao E, et al: Endoscopic and histologic features of immune checkpoint inhibitor-related colitis. *Inflamm Bowel Dis* 24:1695-1705, 2018
10. Kuehn HS, Ouyang W, Lo B, et al: Immune dysregulation in human subjects with heterozygous germline mutations in CTLA4. *Science* 345:1623-1627, 2014
11. Zeissig S, Petersen BS, Tomczak M, et al: Early-onset Crohn's disease and autoimmunity associated with a variant in CTLA-4. *Gut* 64:1889-1897, 2015
12. Schubert D, Bode C, Kenefack R, et al: Autosomal dominant immune dysregulation syndrome in humans with CTLA4 mutations. *Nat Med* 20:1410-1416, 2014
13. Ng SC, Tsoi KK, Kamm MA, et al: Genetics of inflammatory bowel disease in Asia: Systematic review and meta-analysis. *Inflamm Bowel Dis* 18:1164-1176, 2012
14. Nakazawa A, Dotan I, Brimnes J, et al: The expression and function of costimulatory molecules B7H and B7-H1 on colonic epithelial cells. *Gastroenterology* 126:1347-1357, 2004
15. Reynoso ED, Elpek KG, Francisco L, et al: Intestinal tolerance is converted to autoimmune enteritis upon PD-1 ligand blockade. *J Immunol* 182:2102-2112, 2009
16. Johnson DB, Sullivan RJ, Ott PA, et al: Ipilimumab therapy in patients with advanced melanoma and preexisting autoimmune disorders. *JAMA Oncol* 2:234-240, 2016
17. Menzies AM, Johnson DB, Ramanujam S, et al: Anti-PD-1 therapy in patients with advanced melanoma and preexisting autoimmune disorders or major toxicity with ipilimumab. *Ann Oncol* 28:368-376, 2017
18. Leonardi GC, Gainer JF, Altan M, et al: Safety of programmed death-1 pathway inhibitors among patients with non-small-cell lung cancer and preexisting autoimmune disorders. *J Clin Oncol* 36:1905-1912, 2018

19. Abdel-Wahab N, Shah M, Lopez-Olivo MA, et al: Use of immune checkpoint inhibitors in the treatment of patients with cancer and preexisting autoimmune disease: A systematic review. *Ann Intern Med* 168:121-130, 2018
 20. Frohne CC, Llano EM, Perkovic A, et al: Complete response of metastatic melanoma in a patient with Crohn's disease simultaneously receiving anti- α 4 β 7 and anti-PD1 antibodies. *J Immunother Cancer* 7:1, 2019
 21. Singh S, Nagpal SJ, Murad MH, et al: Inflammatory bowel disease is associated with an increased risk of melanoma: A systematic review and meta-analysis. *Clin Gastroenterol Hepatol* 12:210-218, 2014
 22. Jess T, Horváth-Puhó E, Fallingborg J, et al: Cancer risk in inflammatory bowel disease according to patient phenotype and treatment: A Danish population-based cohort study. *Am J Gastroenterol* 108:1869-1876, 2013
 23. Pedersen N, Duricova D, Elkjaer M, et al: Risk of extra-intestinal cancer in inflammatory bowel disease: Meta-analysis of population-based cohort studies. *Am J Gastroenterol* 105:1480-1487, 2010
 24. Bourrier A, Carrat F, Colombel JF, et al: Excess risk of urinary tract cancers in patients receiving thiopurines for inflammatory bowel disease: A prospective observational cohort study. *Aliment Pharmacol Ther* 43:252-261, 2016
 25. Charlson ME, Pompei P, Ales KL, et al: A new method of classifying prognostic comorbidity in longitudinal studies: Development and validation. *J Chronic Dis* 40:373-383, 1987
 26. Schroeder KW, Tremaine WJ, Ilstrup DM: Coated oral 5-aminosalicylic acid therapy for mildly to moderately active ulcerative colitis: A randomized study. *N Engl J Med* 317:1625-1629, 1987
 27. National Cancer Institute: Common Terminology Criteria for Adverse Events (CTCAE) v5.0. https://ctep.cancer.gov/protocoldevelopment/electronic_applications/docs/CTCAE_v5_Quick_Reference_8.5x11.pdf
 28. Hodi FS, O'Day SJ, McDermott DF, et al: Improved survival with ipilimumab in patients with metastatic melanoma. *N Engl J Med* 363:711-723, 2010
 29. Ribas A, Hamid O, Daud A, et al: Association of pembrolizumab with tumor response and survival among patients with advanced melanoma. *JAMA* 315:1600-1609, 2016
 30. Robert C, Long GV, Brady B, et al: Nivolumab in previously untreated melanoma without BRAF mutation. *N Engl J Med* 372:320-330, 2015
 31. Khan M, Lin J, Liao G, et al: Comparative analysis of immune checkpoint inhibitors and chemotherapy in the treatment of advanced non-small cell lung cancer: A meta-analysis of randomized controlled trials. *Medicine (Baltimore)* 97:e11936, 2018
 32. Abu-Sbeih H, Ali FS, Luo W, et al: Importance of endoscopic and histological evaluation in the management of immune checkpoint inhibitor-induced colitis. *J Immunother Cancer* 6:95, 2018
 33. Abu-Sbeih H, Ali FS, Wang X, et al: Early introduction of selective immunosuppressive therapy associated with favorable clinical outcomes in patients with immune checkpoint inhibitor-induced colitis. *J Immunother Cancer* 7:93, 2019
 34. Wang Y, Wiesnoski DH, Helmink BA, et al: Fecal microbiota transplantation for refractory immune checkpoint inhibitor-associated colitis. *Nat Med* 24:1804-1808, 2018
 35. Abu-Sbeih H, Ali FS, Naqash AR, et al: Resumption of immune checkpoint inhibitor therapy after immune-mediated colitis. *J Clin Oncol* 37:2738-2745, 2019
 36. Yu H, MacIsaac D, Wong JJ, et al: Market share and costs of biologic therapies for inflammatory bowel disease in the USA. *Aliment Pharmacol Ther* 47:364-370, 2018
-

AUTHORS' DISCLOSURES OF POTENTIAL CONFLICTS OF INTEREST**Immune Checkpoint Inhibitor Therapy in Patients With Preexisting Inflammatory Bowel Disease**

The following represents disclosure information provided by authors of this manuscript. All relationships are considered compensated unless otherwise noted. Relationships are self-held unless noted. I = Immediate Family Member, Inst = My Institution. Relationships may not relate to the subject matter of this manuscript. For more information about ASCO's conflict of interest policy, please refer to www.asco.org/rwc or ascopubs.org/journal/jco/site/ifc.

Open Payments is a public database containing information reported by companies about payments made to US-licensed physicians ([Open Payments](#)).

Justine V. Cohen

Consulting or Advisory Role: Genzyme, Bristol-Myers Squibb

Guy Ben-Betzalel

Honoraria: MSD, Bristol-Myers Squibb, Novartis, Roche, Medison

Consulting or Advisory Role: Novartis, Bristol-Myers Squibb, MSD

Travel, Accommodations, Expenses: Bristol-Myers Squibb, Medison

Mark M. Awad

Consulting or Advisory Role: Genentech, Merck, Pfizer, Boehringer Ingelheim, AbbVie, AstraZeneca/MedImmune, Clovis Oncology, Nektar, Bristol-Myers Squibb, ARIAD Pharmaceuticals, Foundation Medicine, Syndax, Novartis, Blueprint Medicines, Maverick Therapeutics

Research Funding: Bristol-Myers Squibb, Genentech (Inst), Eli Lilly (Inst), AstraZeneca (Inst), Bristol-Myers Squibb (Inst)

Douglas B. Johnson

Consulting or Advisory Role: Bristol-Myers Squibb, Merck, Novartis, Incyte, Array Biopharma

Research Funding: Incyte, Bristol-Myers Squibb

Patents, Royalties, Other Intellectual Property: Intellectual property and patents pending surrounding use of major histocompatibility complex class II and response to immune therapy

Travel, Accommodations, Expenses: Genentech

David J. Pinato

Consulting or Advisory Role: Eisai, Mina Therapeutics

Speakers' Bureau: Bayer, ViiV Healthcare

Research Funding: MSD Oncology, Bristol-Myers Squibb

Travel, Accommodations, Expenses: Bristol-Myers Squibb, Bayer

Dwight H. Owen

Consulting or Advisory Role: L&M Policy Research, AstraZeneca

Research Funding: Bristol-Myers Squibb (Inst), Palobiofarma (Inst), Merck Sharp & Dohme (Inst), Genentech (Inst)

Travel, Accommodations, Expenses: AstraZeneca

Sarah A. Weiss

Consulting or Advisory Role: Array BioPharma

Travel, Accommodations, Expenses: Array BioPharma

Jarushka Naidoo

Honoraria: Bristol-Myers Squibb, AstraZeneca/MedImmune

Consulting or Advisory Role: Bristol-Myers Squibb, AstraZeneca/MedImmune, Genentech

Research Funding: Merck (Inst), AstraZeneca (Inst)

Travel, Accommodations, Expenses: Bristol-Myers Squibb, AstraZeneca/MedImmune

Gal Markel

Employment: 4C Biomed

Leadership: 4C Biomed

Stock and Other Ownership Interests: 4c Biomed, Biond, Kitov

Honoraria: Novartis, MSD, Bristol-Myers Squibb, Roche

Consulting or Advisory Role: MSD, Novartis

Speakers' Bureau: Novartis, MSD, Bristol-Myers Squibb

Research Funding: Novartis, SILLC

Patents, Royalties, Other Intellectual Property: Patent for anti-CEACAM1 monoclonal antibody that is now licensed to Kitov for further development (Inst)

Travel, Accommodations, Expenses: Bristol-Myers Squibb, MSD

Nick Powell

Consulting or Advisory Role: Allergan, AbbVie, Celgene

Speakers' Bureau: Bristol-Myers Squibb, Takeda, AbbVie, Tillotts Pharma

Travel, Accommodations, Expenses: AbbVie, Takeda

Sai-Ching J. Yeung

Consulting or Advisory Role: Celgene

Research Funding: Bristol-Myers Squibb

Michael Dougan

Stock and Other Ownership Interests: Pfizer, Johnson & Johnson

Consulting or Advisory Role: Tillotts Pharma, Genentech, Partners Therapeutics

Research Funding: Novartis

Yinghong Wang

Consulting or Advisory Role: Tillotts Pharma

No other potential conflicts of interest were reported.

APPENDIX

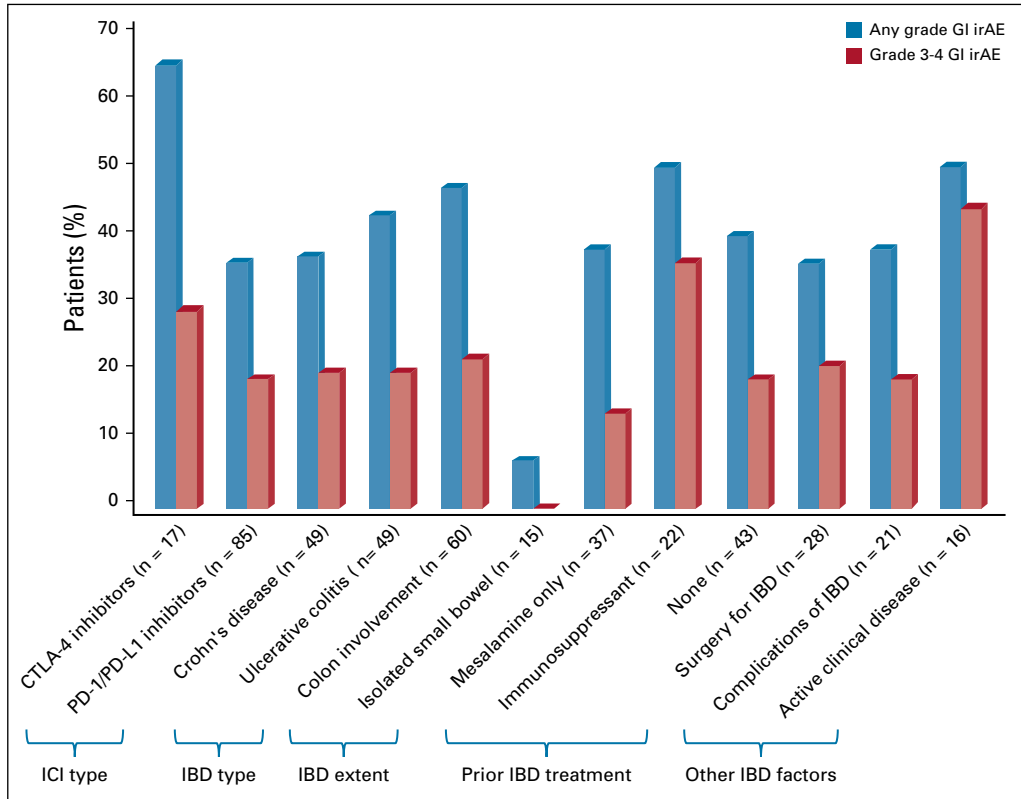


FIG A1. Bar graph of GI immune-related adverse events (irAEs) among different subgroups. CTLA-4, cytotoxic T-lymphocyte antigen-4; IBD, inflammatory bowel disease; ICI, immune checkpoint inhibitor; PD-1, programmed cell death 1; PD-L1 programmed death ligand 1.

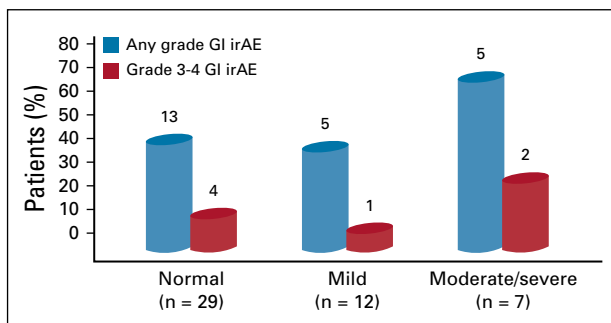


FIG A2. Bar graph of GI immune-related adverse events (irAEs) according to endoscopic presentation at time of immune checkpoint inhibitor initiation.

TABLE A1. Participating Institutions

Institution	Country	No. of Patients With IBD	No. of Patients in Control Group	Cancer type of control group
Memorial Sloan Kettering Cancer Center	US	43	298*	Melanoma
University of Texas MD Anderson Cancer Center	US	17	7,150	Various
Massachusetts General Hospital	US	12	375	Melanoma
Johns Hopkins University	US	5	ND	ND
The Ella Lemelbaum Institute	Israel	5	1,200	Various
Dana-Farber Cancer Institute	US	4	659	NSCLC
University Perugia	Italy	4	200	NSCLC
Kings College London	UK	4	ND	ND
Vanderbilt University	US	3	ND	ND
Imperial College London	UK	1	268	Various
Ohio State University	US	1	810	Various
Yale University	US	1	ND	ND
East Carolina University	US	1	300	Various
Bologne University	Italy	1	117	Various

Abbreviations: IBD, inflammatory bowel disease; ND, no data available; NSCLC, non-small-cell lung cancer; UK, United Kingdom; US, United States.

*Data from the following previously published study: Shoushtari AN, Friedman CF, Navid-Azarbaijani P, et al: Measuring toxic effects and time to treatment failure for nivolumab plus Ipilimumab in melanoma. *JAMA Oncol* 4:98-101, 2018.

TABLE A2. Immunosuppressive Therapy Types

Immunosuppressant	No. of Patients
Corticosteroids	6
Vedolizumab	7
Ustekinumab	1
Adalimumab	1
Thiopurines	4
Corticosteroids and thiopurines	2
Corticosteroids and vedolizumab	1

TABLE A3. GI Adverse Event Features by IBD Status to Time of Immunotherapy: Active IBD Within 3 Months of ICI Versus Inactive IBD

Covariate	Active IBD (n = 16)	Inactive IBD (n = 86)	P
GI adverse event	8 (50)	34 (40)	.581
Median time from immunotherapy to GI adverse event, days (IQR)	60 (17-115)	63 (43-125)	.296
Hospitalization	6 (75)	16 (47)	.243
ICU admission	0 (0)	2 (6)	1.000
Median duration of symptoms, days (IQR)	28 (14-97)	14 (7-26)	.189
Peak colitis grade			.133
1-2	2 (29)	18 (60)	
3-4	5 (71)	12 (40)	
Peak diarrhea grade			.027
1-2	1 (13)	18 (56)	
3-4	7 (88)	14 (44)	
Infliximab/vedolizumab for GI irAE	2 (25)	10 (29)	1.000
Recurrent GI adverse event	2 (25)	13 (49)	.431
Median time from GI adverse event to recurrence, days (IQR)	485	105 (56-200)	.058
Colonic perforation	0 (0)	4 (12)	.572

NOTE. Data presented as No. (%) unless otherwise indicated.

Abbreviations: IBD, inflammatory bowel disease; ICU, intensive care unit; IQR, interquartile range, irAE, immune-related adverse event.

TABLE A4. GI Adverse Event Features by IBD Treatment at Time of Immunotherapy

Covariate	IBD Treatment (n = 59)	No IBD Treatment (n = 43)	P
GI adverse event	25 (42)	15 (40)	.840
Median time from immunotherapy to GI adverse event, days (IQR)	62 (33-123)	62 (30-118)	.516
Hospitalization	13 (52)	9 (53)	1.000
ICU admission	1 (4)	1 (6)	1.000
Median duration of symptoms, days (IQR)	17 (9-35)	19 (9-44)	.911
Peak colitis grade			.743
1-2	10 (50)	10 (59)	
3-4	10 (50)	7 (41)	
Peak diarrhea grade			1.000
1-2	11 (46)	8 (50)	
3-4	13 (54)	8 (50)	
Treatment of GI adverse events			
Corticosteroids	18 (72)	14 (82)	.420
Infliximab/vedolizumab	7 (28)	5 (29)	1.000
Recurrent GI adverse event	9 (36)	6 (35)	1.000
Median time from GI adverse event to recurrence, days (IQR)	105 (53-209)	105 (49-200)	.782
Perforation	1 (4)	3 (18)	.286

NOTE. Data presented as No. (%) unless otherwise indicated.

Abbreviations: IBD, inflammatory bowel disease; ICU, intensive care unit; IQR, interquartile range.