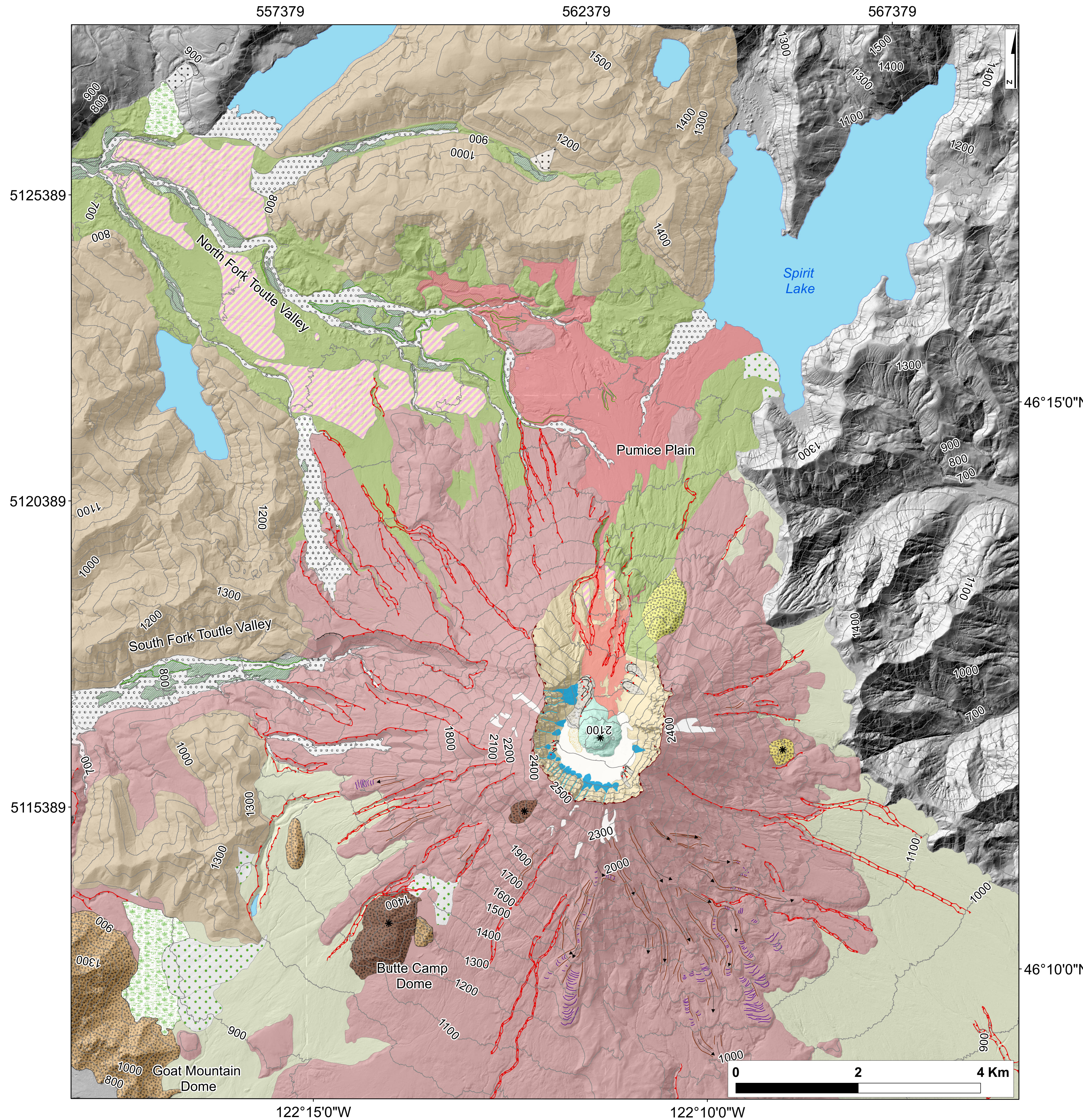


Geomorphology and surface geology map of Mount St. Helens volcano

Simona Gabrielli¹, Matteo Spagnolo¹, Luca De Siena^{1,2}

1. School of Geosciences, University of Aberdeen, UK; 2. Institute of Geosciences, Johannes Gutenberg University, Mainz, Germany



LEGEND

Volcanic Landforms

Pre 1980

- * Vent
- Lava Flow direction
- ↔ Lava Pressure Ridge
- ~ Lava Levee
- Lava Flow
- Volcanic Products (Miocene-Oligocene)
- Sugarbowl Dome
- Goat Mountain Dome
- Butte Camp Dome
- Volcanoclastic Plane

Post 1980

- ⌒ Crater Rim
- Secondary Explosion Pit
- ▨ Hummock
- Debris Avalanche
- Pyroclastic Flow
- 1980 Dome
- Quaternary rocks

Fluvial and Gravitational Landforms

- ↗ Slope boundary
- ⌒ Landslide Scar
- Fluvial erosion scarp
- Lake
- Peat Bog
- Fan
- Alluvial Deposit
- Terraced surface
- Landslide

Glacial and Periglacial Landforms

- ⌒ Rock Glacier Crest
- Avalanche and rock flow channel
- Avalanche and rock flow deposit
- Rock glacier
- Crevassed glacier
- Glacier

Projected Coordinates Systems: GCS, UTM zone 10 N
 Map Data: WGS 84, NAD 1927
 Mapped from a LiDAR of Puget Sound LiDAR Consortium (2003),
 3 m resolution

