



# Effect of Cyclic Heat Stress on Hypothalamic Oxygen Homeostasis and Inflammatory State in the Jungle Fowl and Three Broiler-Based Research Lines

Giorgio Brugaletta<sup>1,2</sup>, Elizabeth Greene<sup>1</sup>, Alison Ramser<sup>1</sup>, Craig W. Maynard<sup>1</sup>, Travis W. Tabler<sup>1</sup>, Federico Sirri<sup>2</sup>, Nicholas B. Anthony<sup>1</sup>, Sara Orlowski<sup>1</sup> and Sami Dridi<sup>1\*</sup>

<sup>1</sup> Department of Poultry Science, Center of Excellence for Poultry Science, University of Arkansas, Fayetteville, AR, United States, <sup>2</sup> Department of Agricultural and Food Sciences, Alma Mater Studiorum – University of Bologna, Bologna, Italy

## OPEN ACCESS

### Edited by:

Kyung-Woo Lee,  
Konkuk University, South Korea

### Reviewed by:

Birendra Mishra,  
University of Hawaii at Manoa,  
United States  
Wen-Chao Liu,  
Guangdong Ocean University, China

### \*Correspondence:

Sami Dridi  
dridi@uark.edu

### Specialty section:

This article was submitted to  
Animal Nutrition and Metabolism,  
a section of the journal  
Frontiers in Veterinary Science

**Received:** 26 March 2022

**Accepted:** 20 April 2022

**Published:** 25 May 2022

### Citation:

Brugaletta G, Greene E, Ramser A, Maynard CW, Tabler TW, Sirri F, Anthony NB, Orlowski S and Dridi S (2022) Effect of Cyclic Heat Stress on Hypothalamic Oxygen Homeostasis and Inflammatory State in the Jungle Fowl and Three Broiler-Based Research Lines.  
*Front. Vet. Sci.* 9:905225.  
doi: 10.3389/fvets.2022.905225

Heat stress (HS) is devastating to poultry production sustainability due its detrimental effects on performance, welfare, meat quality, and profitability. One of the most known negative effects of HS is feed intake depression, which is more pronounced in modern high-performing broilers compared to their ancestor unselected birds, yet the underlying molecular mechanisms are not fully defined. The present study aimed, therefore, to determine the hypothalamic expression of a newly involved pathway, hypoxia/oxygen homeostasis, in heat-stressed broiler-based research lines and jungle fowl. Three populations of broilers (slow growing ACRB developed in 1956, moderate growing 95RB from broilers available in 1995, and modern fast growing MRB from 2015) and unselected Jungle fowl birds were exposed to cyclic heat stress (36°C, 9 h/day for 4 weeks) in a 2 × 4 factorial experimental design. Total RNAs and proteins were extracted from the hypothalamic tissues and the expression of target genes and proteins was determined by real-time quantitative PCR and Western blot, respectively. It has been previously shown that HS increased core body temperature and decreased feed intake in 95RB and MRB, but not in ACRB or JF. HS exposure did not affect the hypothalamic expression of HIF complex, however there was a line effect for HIF-1 $\alpha$  ( $P = 0.02$ ) with higher expression in JF under heat stress. HS significantly up regulated the hypothalamic expression of hemoglobin subunits (HBA1, HBBR, HBE, HBZ), and HJV in ACRB, HBA1 and HJV in 95RB and MRB, and HJV in JF, but it down regulated FPN1 in JF. Additionally, HS altered the hypothalamic expression of oxygen homeostasis- up and down-stream signaling cascades. Phospho-AMPK<sup>Thr172</sup> was activated by HS in JF hypothalamus, but it decreased in that of the broiler-based research lines. Under thermoneutral conditions, p-AMPK<sup>Thr172</sup> was higher in broiler-based research lines compared to JF. Ribosomal protein S6K1, however, was significantly upregulated in 95RB and MRB under both environmental conditions. HS significantly upregulated the hypothalamic expression of NF- $\kappa$ B2 in MRB, RelB, and TNF $\alpha$  in ACRB, abut it down regulated RelA in 95RB. The regulation of HSPs by HS seems to be family- and line-dependent. HS upregulated the hypothalamic expression of HSP60 in ACRB and

95RB, down regulated HSP90 in JF only, and decreased HSP70 in all studied lines. Taken together, this is the first report showing that HS modulated the hypothalamic expression of hypoxia- and oxygen homeostasis-associated genes as well as their up- and down-stream mediators in chickens, and suggests that hypoxia, thermotolerance, and feed intake are interconnected, which merit further in-depth investigations.

**Keywords: broiler chickens, jungle fowl, heat stress, hypothalamus, oxygen homeostasis, inflammation**

## INTRODUCTION

Heat stress (HS) negatively affects performance, health, and welfare of birds, thereby imperiling the poultry production sustainability (1). From a thermophysiological point of view, HS is a thermoregulatory imbalance that occurs when the animals metabolic heat production exceeds their own capacity to dissipate body heat to the surrounding environment (2). Chickens are homeothermic endotherms that have the ability to generate deep body heat, and adopt evolutionary conserved strategies to maintain a relatively high and constant body temperature (3). The most known and prominent response to HS is feed intake depression (4–7), however the underlying molecular mechanisms are still not fully defined.

Feed intake regulation is highly conserved across animals and a series of tightly integrated and interconnected neural mechanisms are involved (8, 9). First brain lesioning, stimulation, and electrophysiological studies evolved the dual center model and identified the hypothalamus, with the satiety and hunger centers, as a major site controlling appetite, feed intake, and body weight (10–12). In search for this central model's components and with the advances and revolutions in molecular techniques, subsequent studies over ensuing years have identified numerous (an)orexigenic neuropeptides (13–16). In a recent study, it was reported that chronic cyclic heat stress in broilers did not alter the hypothalamic expression of the classical neuropeptides, namely neuropeptide Y (NPY), agouti-related peptide (AgRP), proopiomelanocortin (POMC), and cocaine- and amphetamine-regulated transcript (CART) (17), suggesting potential involvement of other central pathways.

In their study, Zhang et al. (18) made a breakthrough by demonstrating a new function for hypoxia-inducible factor (HIF) signaling in the hypothalamus and its ability to regulate feeding behavior, body weight, and metabolic homeostasis. In fact, ablation of HIF in the arcuate nucleus POMC neurons resulted in hyperphagia and increased fat deposition (18). Furthermore, factor inhibiting HIF (FIH)-knock out mouse exhibited hypermetabolic phenotype, with greatly increased food intake, energy expenditure, and ventilation rate (19). Interestingly, the energy sensor AMP-activated kinase (AMPK) and the nutrient sensor mechanistic target of rapamycin (mTOR) signaling pathways were both found to converge on HIF (18). Heat shock proteins (HSPs), nuclear factor  $\kappa$ B (NF- $\kappa$ B), and IL-6, on the other hand, were found to be downstream mediators of HIF (20–22). AMPK and mTOR are well-known regulators of feed intake (23, 24). Similarly, NF- $\kappa$ B, HSPs, and IL-6 have been shown to regulate feed intake and energy homeostasis

in mammals (25–27). Together, these data indicate that the two apparently disparate processes controlled by HIF, i.e., sensing/coordination of oxygen homeostasis and food intake regulation may be linked.

Heat-stressed birds divert blood to the periphery (skin) to maximize sensible heat loss. These results in reduced blood flow to internal organs such as the brain (28, 29) and leads to hypoxia-like state. It is our hypothesis that the central HIF signaling pathway is modulating feed intake regulation. The current study sets to determine the expression profile of hypothalamic HIF complex as well as its upstream regulators (PI3K, AMPK, mTOR) and downstream mediators (NF- $\kappa$ B, IL6, HSPs) in heat-stressed jungle fowl and three experimental broiler chicken lines established at 20-year intervals.

## MATERIALS AND METHODS

### Chicken Populations

The chicken populations used in the present study are maintained and hatched at the poultry facilities of the University of Arkansas. Each generation was randomly mated with the exception of full and half siblings to limit inbreeding. The Athens Canadian Random Bred (ACRB), a slow-growing line, was established from commercially available broiler populations in 1956 (30). The moderate-growing 1995 random bred (95RB) represented the composite of broiler populations available in 1995 (31). The fast-growing modern random bred (MRB) was developed from the composite of high-yielding commercial broilers available in 2015 (31). Lastly, jungle fowl (JF), namely the wild forebear of domestic chicken (32), was the fourth population. This study was approved by the Animal Care and Use Committee of the University of Arkansas with protocol numbers 18083 and 16084, while its procedures conformed to the guide for the care and use of laboratory animals of the National Institutes of Health.

### Animal Husbandry and Experimental Design

A total of 600 newly hatched male chicks ( $n = 150$ /population) were wing-tagged with a number code and randomly allocated to 12 environmentally controlled chambers divided into two pens of the same size (25 birds/pen). A factorial experimental design ( $2 \times 4$ ), having environmental temperature and line (population) as the main factors and pens as replicates, was used. All pens were matched with regard to feeders, drinkers, and wood shavings as bedding material. Daily, birds were manually fed and watered *ad libitum*. Commercially available starter (0–28

days) and finisher diets (29–56 days) were provided. The artificial photoperiod was 23L:1D during the first 7 days, while 20L:4D for the remainder of the trial. The environmental temperature was gradually decreased in all chambers as follows: 32°C (0–3 days), 31°C (4–6 days), 29°C (7–10 days), 27°C (11–14 days), and 25°C (15–28 days). From 29 to 56 days, half of the chambers were constantly kept at thermoneutral conditions (TN, 25°C), while the other half subjected to cyclic heat stress (HS, 36°C, 0900–1800 h) as detailed in our recent study (17). The relative humidity was between 40 and 60% (31).

## Hypothalamic Samples Collection

As previously described (17), two birds per pen (i.e., six birds/combination of environmental temperature and line) were randomly chosen and euthanized *via* cervical dislocation. Hypothalamic samples were collected and treated according to the procedures reported by Piekarski and co-workers (33). Briefly, the entire brain was extracted from the skull and immersed in 2-methylbutane (Sigma, St. Louis, MO) in dry ice for 60 s to provide firmness needed for the hypothalamic dissection. This was done in accordance with the chick brain's stereotaxic atlas published by Kuenzel and Masson (34). Brains were placed on a cold metal plate with the ventral side visible. A forward cut was performed at the corticoseptomesencephalic tract (otherwise known as septopalliomesencephalic tract), while a posterior cut was also performed at the third oculomotor nerve. Two cuts were done bilaterally 2 mm from the brain midline. Lastly, a 5 mm cut from the brain base was performed dorsally to obtain the whole hypothalamus.

## RNA Isolation, Reverse Transcription, and Real-Time Quantitative PCR

RNA isolation, reverse transcription, and real-time quantitative PCR were carried out as previously reported by our group (35–37). Briefly, total RNA was isolated from hypothalamic samples ( $n = 48$ ) with Trizol reagent (Life Technologies, Carlsbad, CA) according to the manufacturer's instructions. Purity and concentrations of RNA were evaluated through Take3 micro-volume plate and Synergy HT multimode microplate reader (BioTek, Winooski, VT). One sample belonging to JF-HS group was omitted due to poor RNA quality. RNA samples were RQ1 RNase-free DNase treated (Promega, Madison, WI), and 1  $\mu$ g RNA was reverse transcribed *via* qScript cDNA Synthesis Kit (#95048-100, Quanta Biosciences, Gaithersburg, MD). The reverse transcription reaction was done at 42°C for 30 min, followed by an incubation of 5 min at 85°C. Real-time quantitative PCR (Applied Biosystems 7500 Real-Time PCR System) was performed in a total reaction of 12.5  $\mu$ l with 2.5  $\mu$ l of cDNA, 0.5  $\mu$ l of forward and reverse primers, and SYBR Green Master Mix (ThermoFisher Scientific, Rockford, IL). The chicken-specific oligonucleotide primers used for hemoglobin subunits (HBA1, HBBR, HBM, HBZ, and HBE), Ferritin Heavy Chain 1 (FTH1), Ferroportin-1 (FPN1), hephaestin (HEPH), hemojuvelin (HJV), Hypoxia-inducible factor-1 $\alpha$  (HIF-1 $\alpha$ ), Egl-9 Family Hypoxia Inducible Factor 1 (EGNL1), protein kinase

B (AKT), phosphatidylinositol 3-kinase alpha (PI3K $\alpha$ ), AMP-activated protein kinase (AMPK) subunits ( $\alpha$ 1/2,  $\beta$ 1/2, and  $\gamma$ 1–3), interleukin 6 (IL-6), tumor necrosis factor alpha (TNF $\alpha$ ), heat-shock proteins (HSP27, HSP60, HSP70, and HSP90), and ribosomal 18S as a housekeeping gene were previously published (6, 38–40). The sequences of the other oligonucleotide primers used are summarized in **Table 1**. The qPCR cycling conditions were 50°C for 2 min and 95°C for 10 min, followed by 40 cycles of a two-step amplification program (95°C for 15 s and 58°C for 60 s). According to Schmittgen and Livak (41), relative expression of target genes was computed through the  $2^{-\Delta\Delta CT}$  method with 18S rRNA as the housekeeping gene and JF-TN group as calibrator.

## Protein Isolation and Western Blot Analysis

The analytical procedures illustrated here were performed along the lines of our previously published article (42). Hypothalamic samples were homogenized in lysis buffer (10 mmol/L Tris base, pH 7.4; 150 mmol/L NaCl; 1 mmol/L EDTA; 0.1% Triton X-100; 0.5% Nonidet P-40; protease and phosphatase inhibitors) using glass beads and Bullet Blender Storm (NextAdvance, Averill Park, NY). Total protein concentration was assessed with Synergy HTX (BioTek, Winooski, VT) and Bradford assay kit (#5000006, Bio-Rad Laboratories, Inc., Hercules, CA). Proteins (80  $\mu$ g) were run on 4%–12% Novex Bis-Tris gels (Life Technologies, Grand Island, NY) and then transferred to polyvinylidene difluoride membranes. Membranes were blocked using TBS with 5% non-fat milk and Tween 20 at RT for 1 h. Later, membranes were washed with TBS and incubated overnight with primary antibodies (1:500–1:1,000) at 4°C. The primary antibodies used were rabbit polyclonal anti-phospho AMPK $\alpha$ 1/2<sup>Thr172</sup> (#2531, Cell Signaling Technology, Danvers, MA), anti-AMPK $\alpha$ 1/2 (#2795, Cell Signaling Technology, Danvers, MA), anti-HSP90 (#PA5-17610, Pierce Thermo Scientific, Rockford, IL), goat polyclonal anti-HSP60 (#sc-1052, Santa Cruz Biotechnology, Dallas, TX), mouse monoclonal anti-HSP70 (#MAI-91159, Pierce Thermo Scientific, Rockford, IL) and rabbit anti-GAPDH (Santa Cruz Biotechnology, Dallas, TX). After a wash with TBS, HRP-conjugated secondary antibodies (1:5,000) were added to 5% non-fat milk in TBS and Tween 20 and incubated with the membranes at RT for 1 h. Protein signals were visualized through chemiluminescence with Super ECL (ABP BioSciences, Beltsville, MD), while images captured using FluorChem M MultiFluor System (ProteinSimple, Santa Clara, CA). Image acquisition and analysis were performed with AlphaView software ver. 3.4.0 (ProteinSimple, Santa Clara, CA). Relative protein levels were presented as a ratio of phospho protein/Pan protein or total protein/GAPDH.

## Statistics

Data were analyzed by two-way ANOVA with environmental temperature and line as fixed factors, while the sampled animal as experimental unit. If ANOVA revealed significant effects, the means were compared by Tukey multiple range test using the Graph Pad Prism version 6.00 for Windows (Graph Pad Software,

**TABLE 1** | List of qPCR chicken-specific oligonucleotide primers.

Gene	Accession number <sup>†</sup>	Primer sequence (5' → 3')	Orientation <sup>§</sup>	Product size (bp)
HIF-2 $\alpha$	NM_204807.3	CCAGTGCGTTCTCCCAACAT	F	66
		GCCTCGTTGCCCAAC	R	
PI3K $\beta$	NM_001031311.1	TGCCTCCTGCCGTGACA	F	61
		TCAGCACCGATCTGTGAATCC	R	
PI3K $\delta$	NM_001012696.2	TGACCAATATCCACAAGCTTTGG	F	69
		GCCACGTCTTCATGCTTGTTCC	R	
NF- $\kappa$ B1	NM_205134.2	CAGTCAACGCAGGACCTAAAGA	F	65
		TGTGACGTGAAGTATCCAAAGTT	R	
NF- $\kappa$ B2	NM_204413.2	AGATCTCGCGGATGGACAAG	F	92
		CTCAATGTCATCTTTCTGCACCTT	R	
RelA	NM_001396038.1	CGCTGCGTGCACAGTTTC	F	61
		CTTCCAGTTCCCGTTTCTTCAC	R	
RelB	XM_003643092.5	CCACGCGCTAATAATTTGC	F	60
		GAAGGGCATTGCATGCATT	R	

<sup>†</sup> Accession number refers to GenBank (National Center for Biotechnology Information – NCBI).

<sup>§</sup> F, forward; R, reverse.

HIF, hypoxia-inducible factor; PI3K, phosphatidylinositol 3-kinase; NF- $\kappa$ B, nuclear factor kappa-light-chain-enhancer of activated B cells.

La Jolla California, USA). Differences were considered significant at  $P < 0.05$ .

## RESULTS

### Expression Profile of Hypothalamic Hypoxia- and Oxygen Homeostasis-Related Genes in Heat-Stressed Broilers and Their Ancestor JF

Exposure to chronic cyclic HS did not affect the hypothalamic expression of HIF-1 $\alpha$ , HIF-2 $\alpha$ , or EGLN1 (Figures 1A–C). However, there was a significant line effect ( $P = 0.02$ ) for hypothalamic HIF-1 $\alpha$  with higher levels in JF compared to the three other broiler lines under HS conditions (Figure 1A). The hypothalamic expression of HIF-2 $\alpha$  and EGLN1 did not differ between the studied lines under thermoneutral or HS conditions (Figures 1B,C). For the oxygen homeostasis-associated genes, there was a significant line effect for HBA1, HBBR, HBE, HBM, HBZ, HEPH, HJV, and FPN1 with a higher expression found in ACRB-hypothalamus for HBA1, HBBR, HBE, HBZ, HJV, and FPN1 under HS conditions (Figures 2A–E,G,H). The 95RB birds exhibited elevated abundance of hypothalamic HBE, HEPH, and HJV mRNA under both environmental conditions (Figures 2C,E,G) and HBZ under HS conditions (Figure 2E). Heat stress up regulated the hypothalamic expression of HBA1, HBBR, HBE, HBZ, and HJV in ACRB (Figures 2A–C,G), HBZ and HJV in 95RB (Figures 2E,G), and HJV in JF (Figure 2G), but it down regulated that of FPN1 in JF (Figure 2H).

### Effect of HS on Hypothalamic AMPK-mTOR Pathway in Broiler-Based Research Lines and Their Ancestor JF

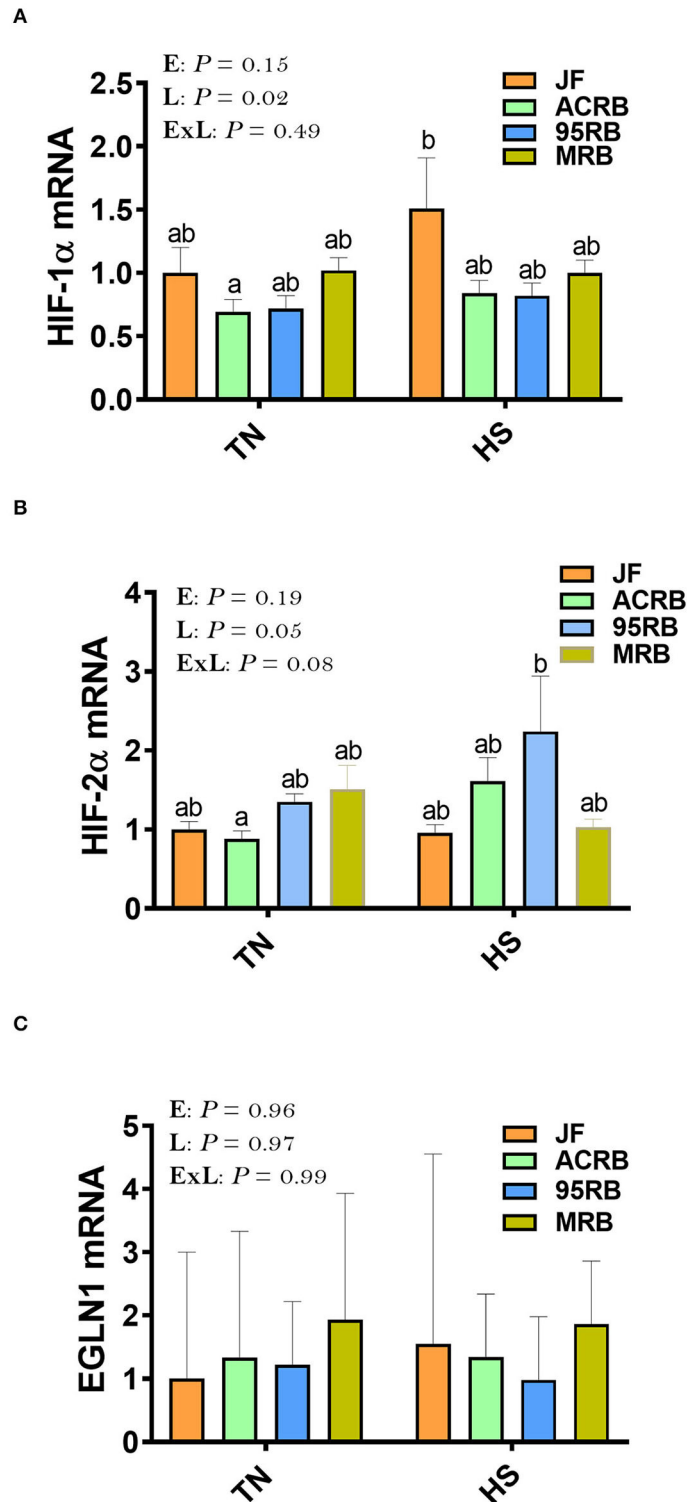
Heat stress increased the phosphorylated levels of AMPK $\alpha$ 1/2 at Thr<sup>172</sup> site in JF hypothalamus, but it reduced it in

broiler-based research lines compared to TN conditions (Figures 3A,B). Under TN conditions, MRB exhibited higher levels of hypothalamic p-AMPK $\alpha$ 1/2<sup>Thr172</sup>, followed by 95RB, ACRB, and JF (Figures 3A,B). Under heat stress conditions, however, JF hypothalamus contained elevated levels of p-AMPK $\alpha$ 1/2<sup>Thr172</sup>, followed by MRB, ACRB, and 95RB, which resulted in a significant environment  $\times$  line interaction ( $P < 0.0001$ ; Figures 3A,B). The gene expression of hypothalamic AMPK $\alpha$ 1, AMPK $\alpha$ 2, AMPK $\beta$ 1, AMPK $\beta$ 2, AMPK $\gamma$ 1, AMPK $\gamma$ 2, and AMPK $\gamma$ 3 did not differ between the studied lines under all environmental conditions (Figures 3C–I). Analyzing the upstream regulators of HIF, the qPCR data showed that heat stress did not affect the hypothalamic expression of PI3K, AKT, mTOR, and S6K1 (Figures 4A–F). Under TN conditions, 95RB exhibited higher levels of hypothalamic PI3K $\alpha$  and PI3K $\gamma$  compared to other lines (Figures 4A,C). The hypothalamic expression of S6K1 gene was found to be upregulated in modern 95RB and MRB broilers compared to JF and ACRB under both environmental conditions (Figure 4F).

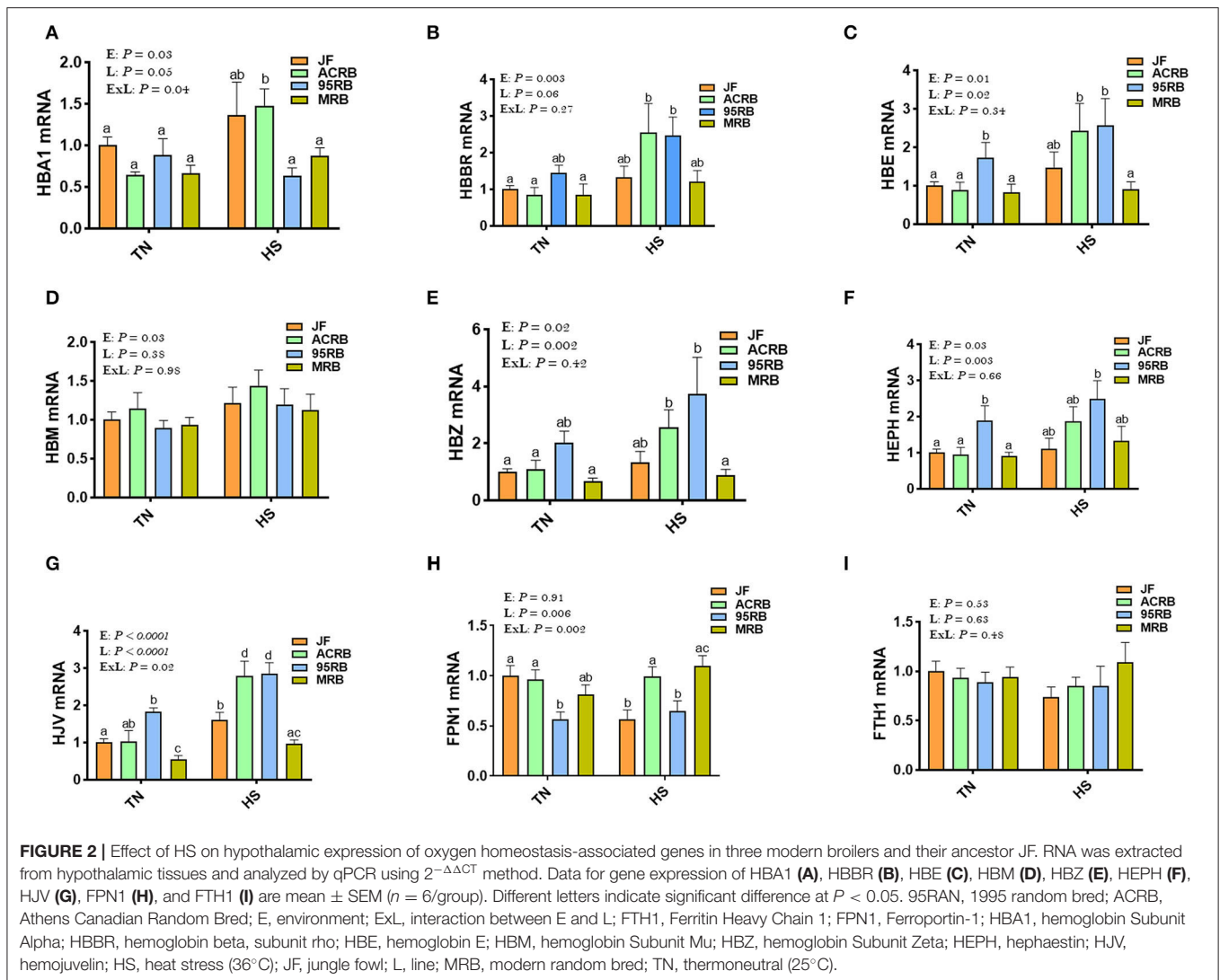
### Effect of HS on the Expression of Hypothalamic NF- $\kappa$ B Complex, TNF $\alpha$ , and IL-6 in Broiler-Based Research Lines and Their Ancestor JF

Heat stress up regulated the hypothalamic expression of NF- $\kappa$ B2 gene in MRB, and RelB and TNF $\alpha$  in ACRB, but it down regulated that of RelA in 95RB compared to TN conditions (Figures 5B–D,F). Under TN conditions, the 95RB exhibited higher levels of RelA and TNF $\alpha$  compared to the other lines (Figures 5C,D). Under HS conditions, MRB manifested elevated mRNA abundances of NF- $\kappa$ B2 (Figure 5B), and ACRB and 95RB exhibited higher levels of TNF $\alpha$  (Figure 5F). The hypothalamic expression of NF- $\kappa$ B1 and IL-6 did not differ between all studied lines under both environmental conditions (Figures 5A,E).





**FIGURE 1 |** Effect of HS on hypothalamic expression of HIF complex in three modern broilers and their ancestor JF. **(A)** HIF-1 $\alpha$ , **(B)** HIF-2 $\alpha$ , and **(C)** EGLN1. RNA was extracted from hypothalamic tissues and analyzed by qPCR using  $2^{-\Delta\Delta CT}$  method (41). Gene expression data are mean  $\pm$  SEM ( $n = 6$ /group). Different letters indicate significant difference at  $P < 0.05$ . 95RB, 1995 random bred; ACRB, Athens Canadian Random Bred; E, environment; EGLN1, Egl-9 Family Hypoxia Inducible Factor 1; ExL, interaction between E and L; HIF, hypoxia-inducible factor; HS, heat stress (36°C); JF, jungle fowl; L, line; MRB, modern random bred; TN, thermoneutral (25°C).



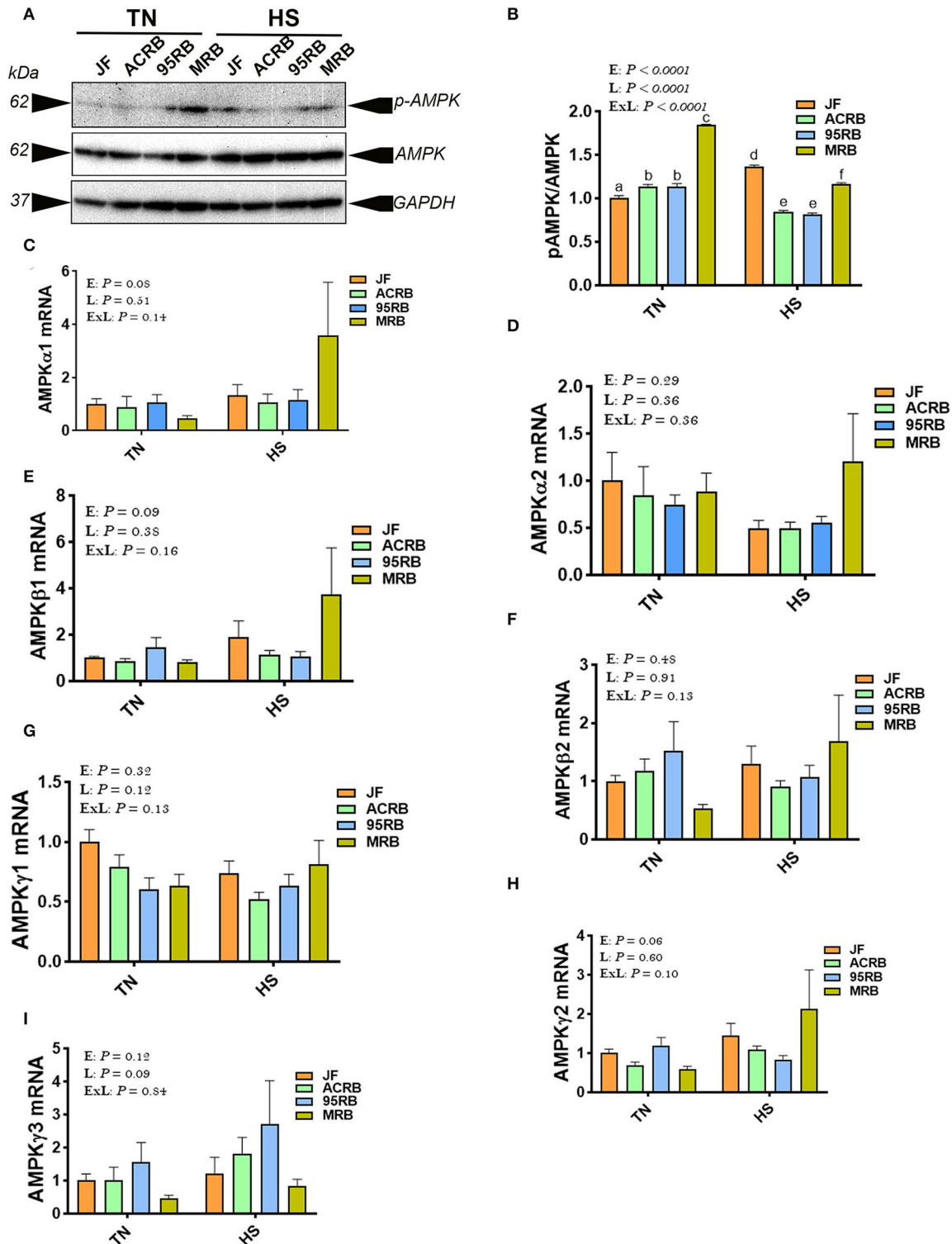
### Effect of HS on the Expression of Hypothalamic HSPs in Broiler-Based Research Lines and Their Ancestor JF

Immunoblot analyses showed that HS exposure increased the protein levels of HSP60 in the hypothalamus of ACRB and 95RB (Figures 6A,B), and reduced that of HSP70 in all studied lines (Figures 6A,C) compared to their TN-counterparts. The hypothalamic protein levels of HSP90 were reduced by HS only in JF (Figure 6D). At the mRNA levels, HS up regulated the hypothalamic expression of HSP90 in both ACRB and 95RB birds (Figure 6H), however it did not elicit any change to HSP27, HSP60, or HSP70 mRNA abundances (Figures 6E–G). Under TN conditions, JF exhibited higher levels of HSP protein levels followed by ACRB, 95RB, and MRB (Figures 6A–D). Under HS conditions, the protein levels of HSP60 did not change much between the lines, however HSP90 mRNA was higher in the modern lines, ACRB, 95RB, MRB, compared to JF (Figure 6H).

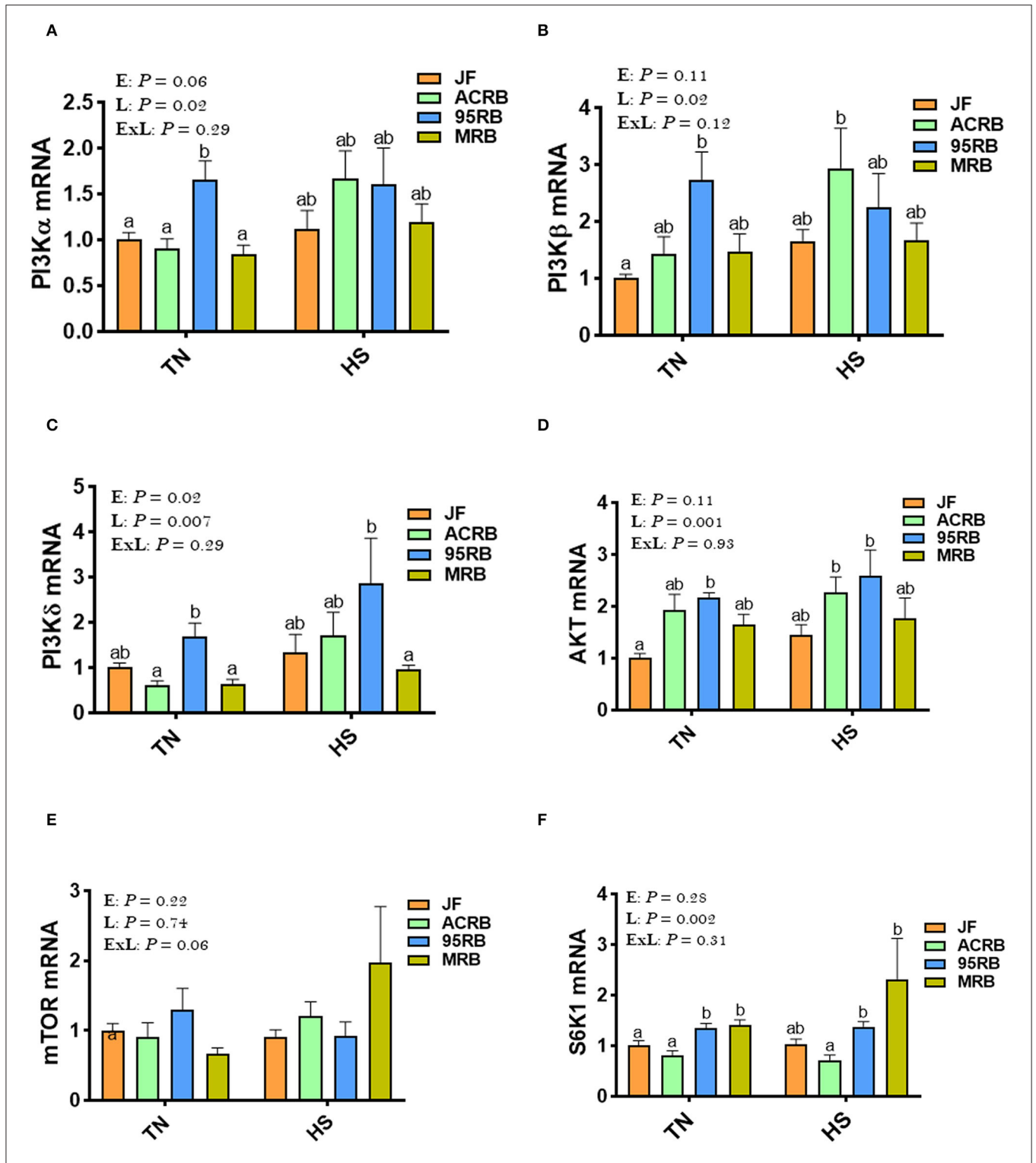
### DISCUSSION

Heat stress is one of the most challenging stressors to poultry production sustainability due to its adverse effects on growth performances, welfare, health, meat quality, and consequently profitability (1, 43–48). The above-mentioned negative effects were found to be more pronounced in high-performing broiler-based research lines when compared to their ancestor JF (31), because of their high metabolic rate and elevated circulatory and respiratory demands (49, 50). As extensively reported, one of the prominent effects of heat stress is reduced feed intake to decrease heat gain from digestion and metabolism (6, 51, 52), however the underlying molecular mechanisms for these heat stress responses are not fully understood.

As the brain is the main site controlling energy intake and expenditure (53–56), and as feed intake and oxygen/hypoxia-sensing are interconnected, we sought to determine here the effect of cyclic heat stress on hypothalamic hypoxia- and

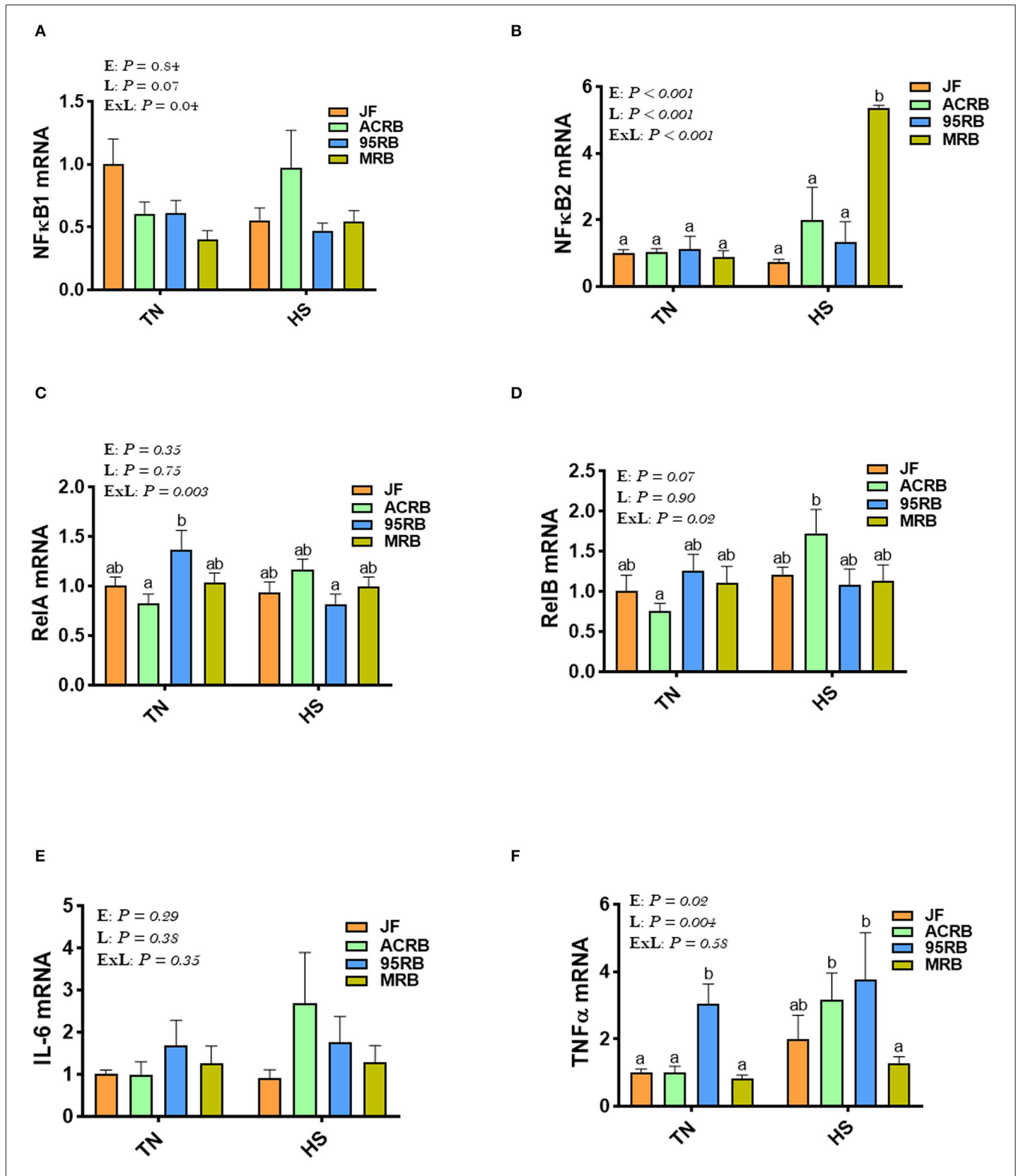


**FIGURE 3 |** Effect of HS on hypothalamic expression of AMPK pathway in three modern broilers and their ancestor JF. Protein and RNA were extracted from hypothalamic tissues and analyzed by western blot (A,B) and qPCR (C-I), respectively. Gene expression was determined by qPCR using  $2^{-\Delta\Delta CT}$  method and data are mean  $\pm$  SEM ( $n = 6$ /group). Protein expression was presented as ratio of p-AMPK<sup>Thr172</sup>/pan AMPK (A,B). Protein was analyzed via AlphaView software and is expressed as mean  $\pm$  SEM ( $n = 3$ /group) with one representative blot shown (A). Different letters indicate significant difference at  $P < 0.05$ . 95RB, 1995 random bred; ACRB, Athens Canadian Random Bred; AMPK, AMP-activated protein kinase; E, environment; ExL, interaction between E and L; HS, heat stress (36°C); JF, jungle fowl; L, line; MRB, modern random bred; TN, thermoneutral (25°C).

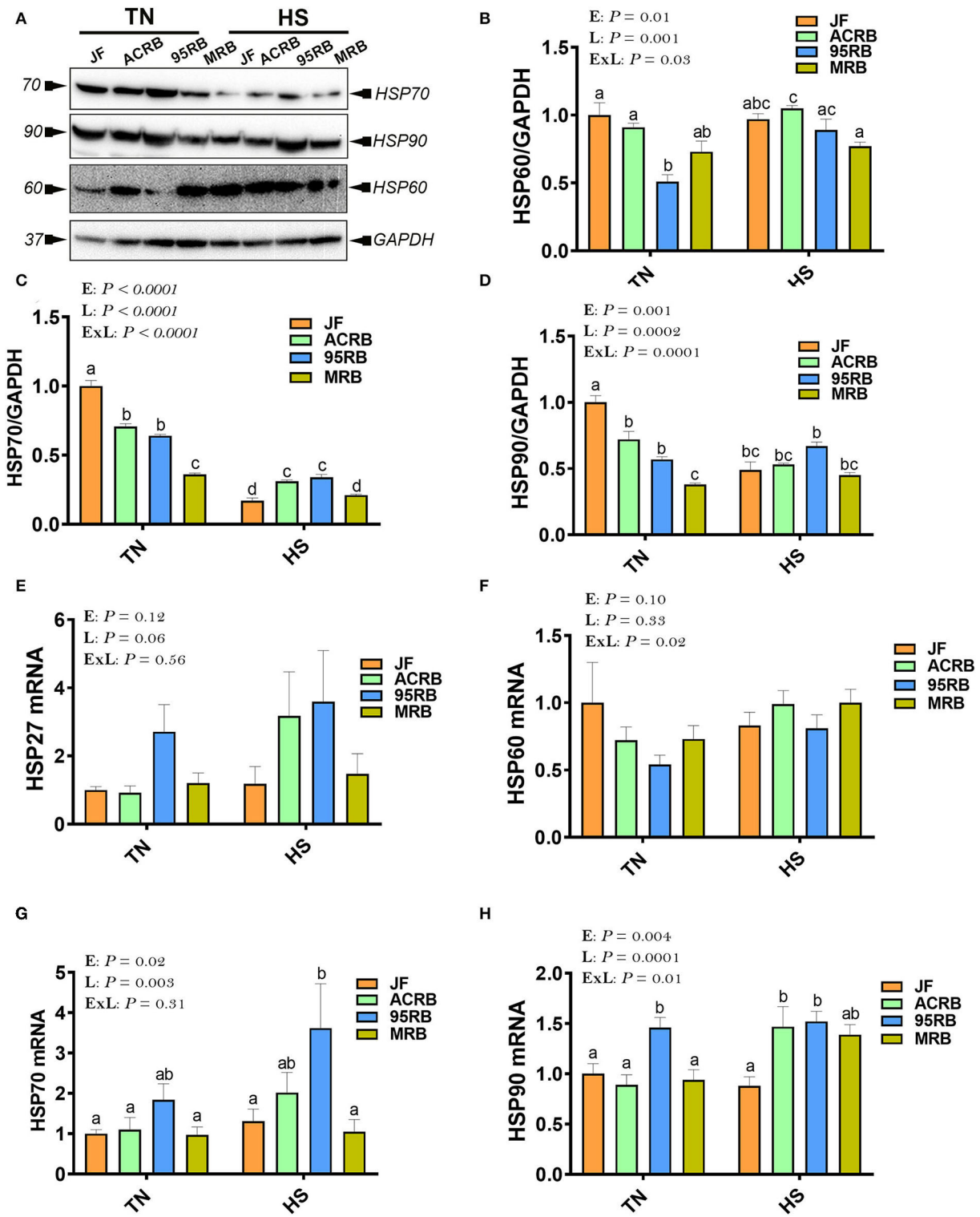


**FIGURE 4 |** Effect of HS on hypothalamic expression of PI<sub>3</sub>K-mTOR-S6K1 pathway in three modern broilers and their ancestor JF. RNA was extracted from hypothalamic tissues and analyzed by qPCR using 2<sup>- $\Delta\Delta$ CT</sup> method. Data for gene expression of PI3K $\alpha$  (A), PI3K $\beta$  (B), PI3K $\gamma$  (C), AKT (D), mTOR (E), and S6K1 (F) are mean  $\pm$  SEM ( $n = 6$ /group). Different letters indicate significant difference at  $P < 0.05$ . 95RB, 1995 random bred; ACRB, Athens Canadian Random Bred; AKT, protein kinase B; E, environment; ExL, interaction between E and L; HS, heat stress (36°C); JF, jungle fowl; L, line; MRB, modern random bred; mTOR, mechanistic target of rapamycin; PI3K, phosphatidylinositol 3-kinase; S6K1, Ribosomal protein S6 kinase beta-1; TN, thermoneutral (25°C).





**FIGURE 5 |** Effect of HS on hypothalamic expression of NF-κB pathway, TNFα, and IL-6 in three modern broilers and their ancestor JF. RNA was extracted from hypothalamic tissues and analyzed by qPCR using  $2^{-\Delta\Delta CT}$  method. Data for gene expression of NF-κB1 (A), NF-κB2 (B), RelA (C), RelB (D), IL-6 (E), and TNFα (F) are mean ± SEM ( $n = 6$ /group). Different letters indicate significant difference at  $P < 0.05$ . 95RB, 1995 random bred; ACRB, Athens Canadian Random Bred; E, environment; ExL, interaction between E and L; HS, heat stress (36°C); IL-6, interleukin 6; JF, jungle fowl; L, line; MRB, modern random bred; NF-κB, Nuclear Factor Kappa B; RelA/B, v-rel avian reticuloendotheliosis viral oncogene homolog A/B; TN, thermoneutral (25°C); TNFα, tumor necrosis factor.



**FIGURE 6 |** Effect of HS on hypothalamic expression of HSPs in three modern broilers and their ancestor JF. Protein and RNA were extracted from hypothalamic tissues and analyzed by western blot (A–D) and qPCR (E–H), respectively. Gene expression was determined by qPCR using  $2^{-\Delta\Delta CT}$  method and data are mean  $\pm$  SEM ( $n = 6$ /group). Protein expression was presented as target protein/GAPDH (A–D). Protein was analyzed via AlphaView software and is expressed as mean  $\pm$  SEM ( $n = 3$ /group) with one representative blot shown (A). Different letters indicate significant difference at  $P < 0.05$ . 95RB, 1995 random bred; ACRB, Athens Canadian Random Bred; E, environment; ExL, interaction between E and L; HS, heat stress (36°C); HSP, heat shock protein; JF, jungle fowl; L, line; MRB, modern random bred; TN, thermoneutral (25°C).

oxygen-associated pathways in three broiler-based research lines and their ancestor JF. Although HS did not affect the hypothalamic expression of HIF complex (HIF-1 $\alpha$ , HIF-2 $\alpha$ , EGNL1), HIF-1 $\alpha$  mRNA abundances were higher in JF hypothalami compared to the broiler-based research lines, particularly under heat stress conditions. HIF-1 is a dimeric transcription factor complex (57) that increases vascularization in hypoxic area and thereby plays an integral role in the body's homeostasis and response to low oxygen (58, 59). As heat stress has been shown to induce hypoxia in internal organs, including brain (60) and as JF birds were found to be more thermotolerant compared to the broiler-based research lines (61), our data suggest that the increased expression of hypothalamic HIF-1 $\alpha$  might improve the overall capacity of central O<sub>2</sub> transport and in turn enhance hypoxia tolerance in JF chickens. In support of this hypothesis, we have previously shown that heat stress increased core body temperature of modern broilers but not that of JF (31), indicating that JF have better ability to withstand high ambient temperature than modern broilers. Furthermore, modern broilers are heavier than JF and a negative association between body weight/size and heat tolerance has been well documented (62, 63). Although it is generally admitted that the O<sub>2</sub> transport pathway of birds has several unique characteristics that help support energetic activity and aerobic metabolism during hypoxia (64), modern broilers exhibit high O<sub>2</sub> requirements because of their strenuous digestion, high metabolism, and fast growth, without concomitant development of cardiovascular/respiratory system efficiency (65, 66). In fact, several elegant studies have shown that fast-growing broilers have thicker respiratory membrane, lower O<sub>2</sub> transfer efficiency, and lower hemoglobin oxygenation capability (50, 65). Moreover, a relationship between heat tolerance and oxygen homeostasis in chicken has been reported (67). Whilst further mechanistic studies are warranted, our data suggest that hypothalamic HIF-1 $\alpha$  might be involved in the regulation of feed intake, hypoxia- and thermo-tolerance in chickens.

The acclimatization and adaptive erythropoietic response to hypoxia generally involves increases in hematocrit and hemoglobin concentrations (64, 68, 69); however, our qPCR analyses did not show a significant alteration in the hypothalamic expression of oxygen homeostasis-associated genes, except a significant down regulation of FPN1 in heat-stressed JF, upregulation of HJV in JF, ACRB, and 95RB under HS conditions, and a significant increase of HBA1, HBBR, HBE, and HBZ in heat-stressed ACRB. This apparent inconsistency is unexpected and does not support the abovementioned adaptive response to hypoxia, at least for the JF birds. However, although the aforesaid conclusion is valid, it must be considered cautiously and supported by further evidence for several reasons. First, we measured here only gene expression, and hemoglobin saturation and its O<sub>2</sub>-binding properties were not measured, which is a limitation in this study. Second, the roles of the hypothalamic oxygen genes in feed intake regulation are still unknown in chickens. As calorie restriction has been shown to regulate FPN1 expression (70, 71), and as iron has been reported to control feed intake in mammals (72), it is therefore reasonable to hypothesize that dysregulation of FPN1

in heat-stressed JF might play a role in heat stress adaptation and feed intake control, however further in-depth investigations are required.

Aside its role in oxygen sensing, HIF regulates many biological processes, including inflammation (73, 74) and glucose metabolism (75, 76), both of which have been reported to be affected by heat stress (77, 78) and regulate feed intake (79, 80). In our experimental conditions, there was an upregulation of hypothalamic NF- $\kappa$ B2 by heat stress only in MRB, RelB, and TNF $\alpha$  in ACRB, and a down regulation of RelA in 95RB. The activation of NF- $\kappa$ B in the hypothalamus has been shown to recruit pro-inflammatory microglia and promote appetite and overeating in mammals (81, 82), suggesting that NF- $\kappa$ B2 might play a role in feed intake regulation in MRB. However, this effect seems to be only during heat stress as the hypothalamic expression of NK- $\kappa$ B2 was not affected in TN conditions. NF- $\kappa$ B has been shown to be regulated by heat stress (83) and induces the expression of various pro-inflammatory genes, such as the cytokines TNF $\alpha$  and IL-6 (84), which have been also reported to regulate feeding behavior (79, 85, 86). The lack of hypothalamic TNF $\alpha$ - and IL6-modulation in the present study proposes that this cytokine pathway was not involved. It is worth noting however that we, again, measured only gene expression and not proteins (the motor elements and workhorse of the cell) because of lack of cross reactive antibodies.

To gain further insights, we next assessed the hypothalamic expression of AMPK [the energy sensor (87)] and mTOR [the nutrient sensor (88)] pathway, because both have been shown to regulate HIF expression and feeding behavior (18, 23, 24, 89). AMPK is a phylogenetically conserved serine/threonine heterotrimeric kinase consisting of catalytic alpha subunit (two isoforms  $\alpha$ 1 and  $\alpha$ 2), and regulatory beta (two isoforms  $\beta$ 1 and  $\beta$ 2), and gamma subunits (three isoforms  $\gamma$ 1,  $\gamma$ 2, and  $\gamma$ 3), that sensing energy levels by detecting elevation in the AMP/ATP ratio (90, 91). Under energy stress (depletion), AMPK is fully activated through binding of AMP to the  $\gamma$ -subunit and induction of Thr172 phosphorylation in the  $\alpha$ -subunit, and thereby promotes catabolic pathways to restore energy balance (92). The increased levels of hypothalamic p-AMPK<sup>Thr172</sup> in broiler-based research lines compared to JF in our experimental conditions is not surprising and indicate that these lines had higher energy demand due to their higher growth rate compared to their wild ancestor JF (93). However, its inconsistent regulation (increase in the JF and decrease in the broiler-based research lines) under heat stress condition is intriguing, particularly when heat stress reduced feed intake in modern broilers but not in JF (31). This suggest that central AMPK is probably not involved in feed intake regulation in chickens, since intracerebroventricular administration of 5-aminoimidazole-4-carboxamide-1- $\beta$ -D-ribofuranosid (AICAR, AMP analog) or compound C (AMPK inhibitor) altered feed intake in chicken independently of AMPK activation (94).

Mechanistic target of rapamycin (mTOR) is also an evolutionary conserved and multi-tasking serine/threonine kinase that regulates various cellular process in response to growth factor stimulation, nutrient, energy or oxygen availability

(95). The two best characterized downstream targets of mTOR are p70-S6 Kinase 1 (S6K1) and the eukaryotic initiation factor 4E (eIF4E) binding protein 1(4E-BP1). Of particular interest, although several genes of mTOR pathways were not affected in our study, hypothalamic S6K1 gene expression was higher in both modern broilers (95RB and MRB) under both environmental conditions. In combination with previous study in different species (rodents and *Drosophila*), our data suggest that central S6K1 may stimulate feed intake and protein synthesis in chickens in a HS-independent manner (23, 96).

As HSPs are molecular chaperones involved in regulating cellular homeostasis, stress response, and most recently feed intake *via* JAK2-STAT3 signaling pathways, we sought to determine here their hypothalamic expression profile. Surprisingly, our data showed that HS decreased the protein levels of HSP70 in all chicken lines, and HSP90 in JF, but it increased that of HSP60 in ACRB. Although further thorough studies are needed, these data indicate that central HSPs are probably regulated in a line-dependent manner in one hand, and the unexpected down regulation of HSP70 by heat load might be associated with adaptation and acclimatization of birds, on the other hand.

In summary, this is the first study to our knowledge showing modulation of hypothalamic expression of hypoxia (HIF complex)- and oxygen-associated molecules as well as their up- and down-stream mediators by heat stress in different genetically selected broiler-based research lines and their ancestor JF. The data indicate that hypoxia- and heat stress-responses are probably and tightly connected to feed intake regulation, which merit further in-depth investigations.

## REFERENCES

- Nardone A, Ronchi B, Lacetera N, Ranieri MS, Bernabucci U. Effects of climate changes on animal production and sustainability of livestock systems. *Livest Sci.* (2010) 130:57–69. doi: 10.1016/j.livsci.2010.02.011
- Nienaber JA, Hahn GL. Livestock production system management responses to thermal challenges. *Int J Biometeorol.* (2007) 52:149–57. doi: 10.1007/s00484-007-0103-x
- Hiebert SM, Noveral J. Are chicken embryos endotherms or ectotherms? A laboratory exercise integrating concepts in thermoregulation and metabolism. *Adv Physiol Educ.* (2007) 31:97–109. doi: 10.1152/advan.00035.2006
- Dale NM, Fuller HL. Effect of diet composition on feed intake and growth of chicks under heat stress. II Constant vs cycling temperatures. *Poult Sci.* (1980) 59:1434–41. doi: 10.3382/ps.0591434
- Abdelli N, Ramser A, Greene ES, Beer L, Tabler TW, Orłowski SK, et al. Effects of cyclic chronic heat stress on the expression of nutrient transporters in the jejunum of modern broilers and their ancestor wild jungle fowl. *Front Physiol.* (2021) 12:733134. doi: 10.3389/fphys.2021.733134
- Emami NK, Greene ES, Kogut MH, Dridi S. Heat stress and feed restriction distinctly affect performance, carcass and meat yield, intestinal integrity, and inflammatory (chemo)cytokines in broiler chickens. *Front Physiol.* (2021) 12:707757. doi: 10.3389/fphys.2021.707757
- Greene ES, Maynard C, Owens CM, Meullenet JF, Dridi S. Effects of herbal adaptogen feed-additive on growth performance, carcass parameters, and muscle amino acid profile in heat-stressed modern broilers. *Front Physiol.* (2021) 12:784952. doi: 10.3389/fphys.2021.784952
- Carneiro BT, Araujo JF. The food-entrainable oscillator: a network of interconnected brain structures entrained by humoral signals? *Chronobiol Int.* (2009) 26:1273–89. doi: 10.3109/07420520903404480
- Berthoud HR. Multiple neural systems controlling food intake and body weight. *Neurosci Biobehav Rev.* (2002) 26:393–428. doi: 10.1016/S0149-7634(02)00014-3
- Brooks CM, Lockwood RA, Wiggins ML. A study of the effect of hypothalamic lesions on the eating habits of the albino rat. *Am J Physiol.* (1946) 147:735–41. doi: 10.1152/ajplegacy.1946.147.4.735
- Nutrition Classics. The anatomical record, volume 78, 1940: hypothalamic lesions and adiposity in the rat. *Nutr Rev.* (1983) 41:124–7.
- Anand BK, Brobeck JR. Localization of a “feeding center” in the hypothalamus of the rat. *Proc Soc Exp Biol Med.* (1951) 77:323–4. doi: 10.3181/00379727-77-18766
- Corbiere A, Vaudry H, Chan P, Walet-Balieu ML, Lecroq T, Lefebvre A, et al. Strategies for the identification of bioactive neuropeptides in vertebrates. *Front Neurosci.* (2019) 13:948. doi: 10.3389/fnins.2019.00948
- Woods SC, Seeley RJ, Porte D Jr., Schwartz MW. Signals that regulate food intake and energy homeostasis. *Science.* (1998) 280:1378–83. doi: 10.1126/science.280.5368.1378
- Elmqvist JK, Elias CF, Saper CB. From lesions to leptin: hypothalamic control of food intake and body weight. *Neuron.* (1999) 22:221–32. doi: 10.1016/S0896-6273(00)81084-3
- Friedman JM, Halaas JL. Leptin and the regulation of body weight in mammals. *Nature.* (1998) 395:763–70. doi: 10.1038/27376
- Brugaletta G, Greene E, Tabler T, Orłowski S, Sirri F, Dridi S. Effect of cyclic heat stress on feeding-related hypothalamic neuropeptides of three

## DATA AVAILABILITY STATEMENT

The original contributions presented in the study are included in the article/supplementary material, further inquiries can be directed to the corresponding author.

## ETHICS STATEMENT

The animal study was reviewed and approved by the University of Arkansas Animal Care and Use Committee under protocols 18083 and 16084.

## AUTHOR CONTRIBUTIONS

SD conceived and designed the study. EG, TT, SO, and SD conducted the *in vivo* experiments. GB, AR, and CM performed the molecular and biochemical analyses. GB wrote the first draft of the manuscript. SD wrote the final paper with a critical review by all authors. All authors contributed to the article and approved the submitted version.

## FUNDING

This study was supported by a grant from the Arkansas Division of Agriculture, Animal Health Awards (to SD and SO), and from USDA-AFRI Sustainable Agriculture Systems (2019-69012-29905) to SD. The Arkansas Division of Agriculture and USDA-AFRI had no role in conducting the research, generating the data, interpreting the results, or writing the manuscript.



- broiler populations and their ancestor jungle fowl. *Front Physiol.* (2021) 12:809341. doi: 10.3389/fphys.2021.809341
18. Zhang H, Zhang G, Gonzalez FJ, Park SM, Cai D. Hypoxia-inducible factor directs POMC gene to mediate hypothalamic glucose sensing and energy balance regulation. *PLoS Biol.* (2011) 9:e1001112. doi: 10.1371/journal.pbio.1001112
  19. Zhang N, Fu Z, Linke S, Chicher J, Gorman JJ, Visk D, et al. The asparaginyl hydroxylase factor inhibiting HIF-1alpha is an essential regulator of metabolism. *Cell Metab.* (2010) 11:364–78. doi: 10.1016/j.cmet.2010.03.001
  20. Baird NA, Turnbull DW, Johnson EA. Induction of the heat shock pathway during hypoxia requires regulation of heat shock factor by hypoxia-inducible factor-1. *J Biol Chem.* (2006) 281:38675–81. doi: 10.1074/jbc.M608013200
  21. Bandarra D, Biddlestone J, Mudie S, Muller HA, Rocha S. HIF-1alpha restricts NF-kappaB-dependent gene expression to control innate immunity signals. *Dis Model Mech.* (2015) 8:169–81. doi: 10.1242/dmm.017285
  22. Fujii M, Kawashima N, Tazawa K, Hashimoto K, Nara K, Noda S, et al. HIF1alpha inhibits LPS-mediated induction of IL-6 synthesis via SOCS3-dependent CEBPbeta suppression in human dental pulp cells. *Biochem Biophys Res Commun.* (2020) 522:308–14. doi: 10.1016/j.bbrc.2019.11.032
  23. Cota D, Proulx K, Smith KA, Kozma SC, Thomas G, Woods SC, et al. Hypothalamic mTOR signaling regulates food intake. *Science.* (2006) 312:927–30. doi: 10.1126/science.1124147
  24. Minokoshi Y, Alquier T, Furukawa N, Kim YB, Lee A, Xue B, et al. AMP-kinase regulates food intake by responding to hormonal and nutrient signals in the hypothalamus. *Nature.* (2004) 428:569–74. doi: 10.1038/nature02440
  25. Shi X, Wang X, Li Q, Su M, Chew E, Wong ET, et al. Nuclear factor kappaB (NF-kappaB) suppresses food intake and energy expenditure in mice by directly activating the Pomc promoter. *Diabetologia.* (2013) 56:925–36. doi: 10.1007/s00125-013-2831-2
  26. Lopez-Ferreras L, Longo F, Richard JE, Eerola K, Shevchouk OT, Tuzinov M, et al. Key role for hypothalamic interleukin-6 in food-motivated behavior and body weight regulation. *Psychoneuroendocrinology.* (2021) 131:105284. doi: 10.1016/j.psyneuen.2021.105284
  27. Hosoi T, Kohda T, Matsuzaki S, Ishiguchi M, Kuwamura A, Akita T, et al. Key role of heat shock protein 90 in leptin-induced STAT3 activation and feeding regulation. *Br J Pharmacol.* (2016) 173:2434–45. doi: 10.1111/bph.13520
  28. Bain AR, Morrison SA, Ainslie PN. Cerebral oxygenation and hyperthermia. *Front Physiol.* (2014) 5:92. doi: 10.3389/fphys.2014.00092
  29. Sato K, Oue A, Yoneya M, Sadamoto T, Ogoh S. Heat stress redistributes blood flow in arteries of the brain during dynamic exercise. *J Appl Physiol.* (2016) 120:766–73. doi: 10.1152/jappphysiol.00353.2015
  30. Collins KE, Marks HL, Aggrey SE, Lacy MP, Wilson JL. History of the Athens Canadian Random Bred and the Athens Random Bred control populations. *Poult Sci.* (2016) 95:997–1004. doi: 10.3382/ps/pew085
  31. Tabler TW, Greene ES, Orłowski SK, Hiltz JZ, Anthony NB, Dridi S. Intestinal barrier integrity in heat-stressed modern broilers and their ancestor wild jungle fowl. *Front Vet Sci.* (2020) 7:249. doi: 10.3389/fvets.2020.00249
  32. Wall CW, Anthony NB. Inheritance of carcass variables when giant jungle fowl and broilers achieve a common physiological body weight. *Poult Sci.* (1995) 74:231–6. doi: 10.3382/ps.0740231
  33. Piekarski A, Decuyper E, Buyse J, Dridi S. Chenodeoxycholic acid reduces feed intake and modulates the expression of hypothalamic neuropeptides and hepatic lipogenic genes in broiler chickens. *Gen Comp Endocrinol.* (2016) 229:74–83. doi: 10.1016/j.ygcen.2016.03.007
  34. Kuenzel WJ, Masson M. *A Stereotaxic Atlas of the Brain of the Chick (Gallus domesticus)*. Baltimore, MD: Johns Hopkins University Press. (1988).
  35. Rajaei-Sharifabadi H, Greene E, Piekarski A, Falcon D, Ellestad L, Donoghue A, et al. Surface wetting strategy prevents acute heat exposure-induced alterations of hypothalamic stress- and metabolic-related genes in broiler chickens. *J Anim Sci.* (2017) 95:1132–43. doi: 10.2527/jas.2016.1290
  36. Greene E, Flees J, Dhamad A, Alrubaye A, Hennigan S, Pleimann J, et al. Double-Stranded RNA is a novel molecular target in osteomyelitis pathogenesis: a translational avian model for human bacterial chondronecrosis with osteomyelitis. *Am J Pathol.* (2019) 189:2077–89. doi: 10.1016/j.ajpath.2019.06.013
  37. Greene ES, Zampiga M, Sirri F, Ohkubo T, Dridi S. Orexin system is expressed in avian liver and regulates hepatic lipogenesis via ERK1/2 activation. *Sci Rep.* (2020) 10:19191. doi: 10.1038/s41598-020-76329-2
  38. Greene E, Flees J, Dadgar S, Mallmann B, Orłowski S, Dhamad A, et al. Quantum blue reduces the severity of woody breast myopathy via modulation of oxygen homeostasis-related genes in broiler chickens. *Front Physiol.* (2019) 10:1251. doi: 10.3389/fphys.2019.01251
  39. Vignale K, Greene ES, Caldas JV, England JA, Boonsinchai N, Sodsee P, et al. 25-Hydroxycholecalciferol enhances male broiler breast meat yield through the mTOR pathway. *J Nutr.* (2015) 145:855–63. doi: 10.3945/jn.114.207936
  40. Flees JJ, Ganguly B, Dridi S. Phytogetic feed additives improve broiler feed efficiency via modulation of intermediary lipid and protein metabolism-related signaling pathways. *Poult Sci.* (2021) 100:100963. doi: 10.1016/j.psj.2020.12.060
  41. Schmittgen TD, Livak KJ. Analyzing real-time PCR data by the comparative C(T) method. *Nat Protoc.* (2008) 3:1101–8. doi: 10.1038/nprot.2008.73
  42. Lassiter K, Greene E, Piekarski A, Faulkner OB, Hargis BM, Bottje W, et al. Orexin system is expressed in avian muscle cells and regulates mitochondrial dynamics. *Am J Physiol Regul Integr Comp Physiol.* (2015) 308:R173–87. doi: 10.1152/ajpregu.00394.2014
  43. Rostagno MH. Effects of heat stress on the gut health of poultry. *J Anim Sci.* (2020) 98:skaa090. doi: 10.1093/jas/skaa090
  44. Nawaz AH, Amoah K, Leng QY, Zheng JH, Zhang WL, Zhang L. Poultry response to heat stress: its physiological, metabolic, and genetic implications on meat production and quality including strategies to improve broiler production in a warming world. *Front Vet Sci.* (2021) 8:699081. doi: 10.3389/fvets.2021.699081
  45. Zhang ZY, Jia GQ, Zuo JJ, Zhang Y, Lei J, Ren L, et al. Effects of constant and cyclic heat stress on muscle metabolism and meat quality of broiler breast fillet and thigh meat. *Poult Sci.* (2012) 91:2931–7. doi: 10.3382/ps.2012-02255
  46. Rath PK, Behura NC, Sahoo SP, Panda P, Mandal KD, Panigraha PN. Amelioration of heat stress for poultry welfare: a strategic approach. *Int J Livest Res.* (2015) 5:1–9. doi: 10.5455/ijlr.20150330093915
  47. Slawinska A, Zampiga M, Sirri F, Meluzzi A, Bertocchi M, Tavaniello S, et al. Impact of galactooligosaccharides delivered in ovo on mitigating negative effects of heat stress on performance and welfare of broilers. *Poult Sci.* (2020) 99:407–15. doi: 10.3382/ps/pez512
  48. St-Pierre NR, CB, Schnitkey G. Economic losses from heat stress by US livestock industries. *J Dairy Sci.* (2003) 86:52–77. doi: 10.3168/jds.S0022-0302(03)74040-5
  49. Julian RJ. Rapid growth problems: ascites and skeletal deformities in broilers. *Poult Sci.* (1998) 77:1773–80. doi: 10.1093/ps/77.12.1773
  50. Julian RJ, Mirsalimi SM. Blood oxygen concentration of fast-growing and slow-growing broiler chickens, and chickens with ascites from right ventricular failure. *Avian Dis.* (1992) 36:730–2. doi: 10.2307/1591774
  51. Wasti S, Sah N, Mishra B. Impact of heat stress on poultry health and performances, and potential mitigation strategies. *Animals.* (2020) 10:1266. doi: 10.3390/ani10081266
  52. Greene ES, Cauble R, Kadhim H, de Almeida Mallmann B, Gu I, Lee SO, et al. Protective effects of the phytogetic feed additive “comfor” on growth performance via modulation of hypothalamic feeding- and drinking-related neuropeptides in cyclic heat-stressed broilers. *Domest Anim Endocrinol.* (2021) 74:106487. doi: 10.1016/j.domaniend.2020.106487
  53. Farr OM Li CR, Mantzoros CS. Central nervous system regulation of eating: insights from human brain imaging. *Metabolism.* (2016) 65:699–713. doi: 10.1016/j.metabol.2016.02.002
  54. Schwartz MW, Porte D Jr. Diabetes, obesity, and the brain. *Science.* (2005) 307:375–9. doi: 10.1126/science.1104344
  55. Ahima RS, Antwi DA. Brain regulation of appetite and satiety. *Endocrinol Metab Clin North Am.* (2008) 37:811–23. doi: 10.1016/j.ecl.2008.08.005
  56. Tachibana T, Tsutsui K. Neuropeptide control of feeding behavior in birds and its difference with mammals. *Front Neurosci.* (2016) 10:485. doi: 10.3389/fnins.2016.00485
  57. Wang GL, Jiang BH, Rue EA, Semenza GL. Hypoxia-inducible factor 1 is a basic-helix-loop-helix-PAS heterodimer regulated by cellular O<sub>2</sub> tension. *Proc Natl Acad Sci U S A.* (1995) 92:5510–4. doi: 10.1073/pnas.92.12.5510
  58. Carmeliet P, Dor Y, Herbert JM, Fukumura D, Brusselmans K, Dewerchin M, et al. Role of HIF-1alpha in hypoxia-mediated apoptosis, cell proliferation and tumour angiogenesis. *Nature.* (1998) 394:485–90. doi: 10.1038/28867
  59. Semenza GL. Regulation of oxygen homeostasis by hypoxia-inducible factor 1. *Physiology.* (2009) 24:97–106. doi: 10.1152/physiol.00045.2008



60. Rowell LB, Marx HJ, Bruce RA, Conn RD, Kusumi F. Reductions in cardiac output, central blood volume, and stroke volume with thermal stress in normal men during exercise. *J Clin Invest.* (1966) 45:1801–16. doi: 10.1172/JCI105484
61. Soleimani AF, Zulkifli I, Omar AR, Raha AR. Physiological responses of 3 chicken breeds to acute heat stress. *Poult Sci.* (2011) 90:1435–40. doi: 10.3382/ps.2011-01381
62. Wilson HR, Wilcox CJ, Voitle RA, Baird CD, Dorminey RW. Characteristics of White Leghorn chickens selected for heat tolerance. *Poult Sci.* (1975) 54:126–30. doi: 10.3382/ps.0540126
63. Sandercock DA, Hunter RR, Mitchell MA, Hocking PM. Thermoregulatory capacity and muscle membrane integrity are compromised in broilers compared with layers at the same age or body weight. *Br Poult Sci.* (2006) 47:322–9. doi: 10.1080/00071660600732346
64. Monge C, Leon-Velarde F. Physiological adaptation to high altitude: oxygen transport in mammals and birds. *Physiol Rev.* (1991) 71:1135–72. doi: 10.1152/physrev.1991.71.4.1135
65. Reeves JT, Ballam G, Hofmeister S, Pickett C, Morris K, Peacock A. Improved arterial oxygenation with feed restriction in rapidly growing broiler chickens. *Comp Biochem Physiol A Comp Physiol.* (1991) 99:481–5. doi: 10.1016/0300-9629(91)90037-D
66. Olkowski AA, Classen HL. Progressive bradycardia, a possible factor in the pathogenesis of ascites in fast growing broiler chickens raised at low altitude. *Br Poult Sci.* (1998) 39:139–46. doi: 10.1080/00071669889529
67. Wilson HR, MacLaury DW, Johnson TH, Baird CD. Relationship of heat tolerance and oxygen consumption in chickens. *Poult Sci.* (1975) 54:299–300. doi: 10.3382/ps.0540299
68. Kanstrup IL, Ekblom B. Blood volume and hemoglobin concentration as determinants of maximal aerobic power. *Med Sci Sports Exerc.* (1984) 16:256–62. doi: 10.1249/00005768-198406000-00010
69. Schuler B, Arras M, Keller S, Rettich A, Lundby C, Vogel J, et al. Optimal hematocrit for maximal exercise performance in acute and chronic erythropoietin-treated mice. *Proc Natl Acad Sci USA.* (2010) 107:419–23. doi: 10.1073/pnas.0912924107
70. Luo QQ, Zhou YF, Chen MY, Liu L, Ma J, Zhang MW, et al. Fasting up-regulates ferroportin 1 expression via a Ghrelin/GHSR/MAPK signaling pathway. *J Cell Physiol.* (2018) 233:30–7. doi: 10.1002/jcp.25931
71. Wei S, Shi W, Li M, Gao Q. Calorie restriction down-regulates expression of the iron regulatory hormone hepcidin in normal and D-galactose-induced aging mouse brain. *Rejuvenation Res.* (2014) 17:19–26. doi: 10.1089/rej.2013.1450
72. Gao Y, Li Z, Gabrielsen JS, Simcox JA, Lee SH, Jones D, et al. Adipocyte iron regulates leptin and food intake. *J Clin Invest.* (2015) 125:3681–91. doi: 10.1172/JCI81860
73. Cramer T, Yamanishi Y, Clausen BE, Forster I, Pawlinski R, Mackman N, et al. HIF-1 $\alpha$  is essential for myeloid cell-mediated inflammation. *Cell.* (2003) 112:645–57. doi: 10.1016/S0092-8674(03)00154-5
74. Corcoran SE, O'Neill LA. HIF1 $\alpha$  and metabolic reprogramming in inflammation. *J Clin Invest.* (2016) 126:3699–707. doi: 10.1172/JCI84431
75. Fulda S, Debatin KM. HIF-1-regulated glucose metabolism: a key to apoptosis resistance? *Cell Cycle.* (2007) 6:790–2. doi: 10.4161/cc.6.7.4084
76. Ochiai D, Goda N, Hishiki T, Kanai M, Senoo-Matsuda N, Soga T, et al. Disruption of HIF-1 $\alpha$  in hepatocytes impairs glucose metabolism in diet-induced obesity mice. *Biochem Biophys Res Commun.* (2011) 415:445–9. doi: 10.1016/j.bbrc.2011.10.089
77. Lee W, Moon M, Kim HG, Lee TH, Oh MS. Heat stress-induced memory impairment is associated with neuroinflammation in mice. *J Neuroinflammation.* (2015) 12:102. doi: 10.1186/s12974-015-0324-6
78. Kimball AL, McCue PM, Petrie MA, Shields RK. Whole body heat exposure modulates acute glucose metabolism. *Int J Hyperthermia.* (2018) 35:644–51. doi: 10.1080/02656736.2018.1516303
79. Buchanan JB, Johnson RW. Regulation of food intake by inflammatory cytokines in the brain. *Neuroendocrinology.* (2007) 86:183–90. doi: 10.1159/000108280
80. Dwarkasing JT, Marks DL, Witkamp RF, van Norren K. Hypothalamic inflammation and food intake regulation during chronic illness. *Peptides.* (2016) 77:60–6. doi: 10.1016/j.peptides.2015.06.011
81. Zhang X, Zhang G, Zhang H, Karin M, Bai H, Cai D. Hypothalamic IKK $\beta$ /NF- $\kappa$ B and ER stress link overnutrition to energy imbalance and obesity. *Cell.* (2008) 135:61–73. doi: 10.1016/j.cell.2008.07.043
82. Li J, Tang Y, Cai D. IKK $\beta$ /NF- $\kappa$ B disrupts adult hypothalamic neural stem cells to mediate a neurodegenerative mechanism of dietary obesity and pre-diabetes. *Nat Cell Biol.* (2012) 14:999–1012. doi: 10.1038/ncb2562
83. Kretz-Remy C, Munsch B, Arrigo AP. NF- $\kappa$ B-dependent transcriptional activation during heat shock recovery. Thermolability of the NF- $\kappa$ B complex. *J Biol Chem.* (2001) 276:43723–33. doi: 10.1074/jbc.M010821200
84. Wang N, Liang H, Zen K. Molecular mechanisms that influence the macrophage m1-m2 polarization balance. *Front Immunol.* (2014) 5:614. doi: 10.3389/fimmu.2014.00614
85. Romanatto T, Cesquini M, Amaral ME, Roman EA, Moraes JC, Torsoni MA, et al. TNF- $\alpha$  acts in the hypothalamus inhibiting food intake and increasing the respiratory quotient—effects on leptin and insulin signaling pathways. *Peptides.* (2007) 28:1050–8. doi: 10.1016/j.peptides.2007.03.006
86. Mishra D, Richard JE, Maric I, Porteiro B, Haring M, Kooijman S, et al. Parabrachial interleukin-6 reduces body weight and food intake and increases thermogenesis to regulate energy metabolism. *Cell Rep.* (2019) 26:3011–26.e5. doi: 10.1016/j.celrep.2019.02.044
87. Hardie DG, Ross FA, Hawley SA. AMPK: a nutrient and energy sensor that maintains energy homeostasis. *Nat Rev Mol Cell Biol.* (2012) 13:251–62. doi: 10.1038/nrm3311
88. Sabatini DM. Twenty-five years of mTOR: uncovering the link from nutrients to growth. *Proc Natl Acad Sci USA.* (2017) 114:11818–25. doi: 10.1073/pnas.1716173114
89. Wiczler BM, Thomas G. The role of the mTOR pathway in regulating food intake. *Curr Opin Drug Discov Devel.* (2010) 13:604–12.
90. Chen L, Xin FJ, Wang J, Hu J, Zhang YY, Wan S, et al. Conserved regulatory elements in AMPK. *Nature.* (2013) 498:E8–10. doi: 10.1038/nature12189
91. Xiao B, Sanders MJ, Underwood E, Heath R, Mayer FV, Carmena D, et al. Structure of mammalian AMPK and its regulation by ADP. *Nature.* (2011) 472:230–3. doi: 10.1038/nature09932
92. Stein SC, Woods A, Jones NA, Davison MD, Carling D. The regulation of AMP-activated protein kinase by phosphorylation. *Biochem J.* (2000) 345(Pt 3):437–43. doi: 10.1042/bj3450437
93. Tickle PG, Hutchinson JR, Codd JR. Energy allocation and behaviour in the growing broiler chicken. *Sci Rep.* (2018) 8:4562. doi: 10.1038/s41598-018-22604-2
94. Xu P, Siegel PB, Denbow DM. AICAR and compound C regulate food intake independently of AMP-activated protein kinase in lines of chickens selected for high or low body weight. *Comp Biochem Physiol A Mol Integr Physiol.* (2011) 159:401–12. doi: 10.1016/j.cbpa.2011.04.004
95. Laplante M, Sabatini DM. mTOR signaling in growth control and disease. *Cell.* (2012) 149:274–93. doi: 10.1016/j.cell.2012.03.017
96. Wu Q, Zhang Y, Xu J, Shen P. Regulation of hunger-driven behaviors by neural ribosomal S6 kinase in *Drosophila*. *Proc Natl Acad Sci USA.* (2005) 102:13289–94. doi: 10.1073/pnas.0501914102

**Conflict of Interest:** The authors declare that the research was conducted in the absence of any commercial or financial relationships that could be construed as a potential conflict of interest.

**Publisher's Note:** All claims expressed in this article are solely those of the authors and do not necessarily represent those of their affiliated organizations, or those of the publisher, the editors and the reviewers. Any product that may be evaluated in this article, or claim that may be made by its manufacturer, is not guaranteed or endorsed by the publisher.

Copyright © 2022 Brugaletta, Greene, Ramser, Maynard, Tabler, Sirri, Anthony, Orlowski and Dridi. This is an open-access article distributed under the terms of the Creative Commons Attribution License (CC BY). The use, distribution or reproduction in other forums is permitted, provided the original author(s) and the copyright owner(s) are credited and that the original publication in this journal is cited, in accordance with accepted academic practice. No use, distribution or reproduction is permitted which does not comply with these terms.