

PERSPECTIVE OPEN



The single-cell opioid responses in the context of HIV (SCORCH) consortium

Seth A. Ament¹✉, Rianne R. Campbell¹, Mary Kay Lobo¹, Joseph P. Receveur¹, Kriti Agrawal², Alejandra Borjabad³, Siddappa N. Byrareddy⁴, Linda Chang¹, Declan Clarke², Prashant Emani², Dana Gabuzda⁵, Kyle J. Gaulton⁶, Michelle Giglio¹, Federico M. Giorgi⁷, Busra Gok⁸, Chittibabu Guda⁴, Eran Hadas³, Brian R. Herb¹, Wen Hu⁹, Anita Huttner², Mohammad R. Ishmam³, Michelle M. Jacobs³, Jennifer Kelschenbach³, Dong-Wook Kim¹⁰, Cheyu Lee¹¹, Shuhui Liu³, Xiaokun Liu³, Bertha K. Madras¹², Anup A. Mahurkar¹, Deborah C. Mash¹³, Eran A. Mukamel⁶, Meng Niu⁴, Richard M. O'Connor³, Chelsea M. Pagan¹⁰, Alina P. S. Pang⁹, Piya Pillai³, Vez Repunte-Canonigo¹⁴, W. Brad Ruzicka¹², Jay Stanley², Timothy Tickle¹⁵, Shang-Yi A. Tsai¹⁶, Allen Wang⁶, Lauren Wills³, Alyssa M. Wilson³, Susan N. Wright¹⁶, Siwei Xu¹¹, Junchen Yang², Maryam Zand⁶, Le Zhang², Jing Zhang¹¹, Schahram Akbarian³, Shilpa Buch⁴, Christine S. Cheng⁶, Michael J. Corley⁹, Howard S. Fox⁴, Mark Gerstein², Suryaram Gummuluru⁸, Myriam Heiman¹⁷, Ya-Chi Ho², Manolis Kellis¹⁷, Paul J. Kenny³, Yuval Kluger², Teresa A. Milner⁹, David J. Moore⁶, Susan Morgello³, Lishomwa C. Ndhlovu⁹, Tariq M. Rana⁶, Pietro Paolo Sanna¹⁴, John S. Satterlee¹⁶, Nenad Sestan², Stephen A. Spector⁶, Serena Spudich², Hagen U. Tilgner⁹, David J. Volsky³, Owen R. White¹, Dionne W. Williams¹⁸ and Hongkui Zeng¹⁰

© The Author(s) 2024

Substance use disorders (SUD) and drug addiction are major threats to public health, impacting not only the millions of individuals struggling with SUD, but also surrounding families and communities. One of the seminal challenges in treating and studying addiction in human populations is the high prevalence of co-morbid conditions, including an increased risk of contracting a human immunodeficiency virus (HIV) infection. Of the ~15 million people who inject drugs globally, 17% are persons with HIV. Conversely, HIV is a risk factor for SUD because chronic pain syndromes, often encountered in persons with HIV, can lead to an increased use of opioid pain medications that in turn can increase the risk for opioid addiction. We hypothesize that SUD and HIV exert shared effects on brain cell types, including adaptations related to neuroplasticity, neurodegeneration, and neuroinflammation. Basic research is needed to refine our understanding of these affected cell types and adaptations. Studying the effects of SUD in the context of HIV at the single-cell level represents a compelling strategy to understand the reciprocal interactions among both conditions, made feasible by the availability of large, extensively-phenotyped human brain tissue collections that have been amassed by the Neuro-HIV research community. In addition, sophisticated animal models that have been developed for both conditions provide a means to precisely evaluate specific exposures and stages of disease. We propose that single-cell genomics is a uniquely powerful technology to characterize the effects of SUD and HIV in the brain, integrating data from human cohorts and animal models. We have formed the Single-Cell Opioid Responses in the Context of HIV (SCORCH) consortium to carry out this strategy.

Molecular Psychiatry (2024) 29:3950–3961; <https://doi.org/10.1038/s41380-024-02620-7>

INTRODUCTION

Substance use disorders (SUD) represent one of the major public health challenges of our era. An estimated 5% of the world's population uses illicit drugs, which can lead to devastating personal consequences and a tragically high rate of overdose deaths, as well as enormous economic costs to address the negative impacts of SUD [1]. In particular, the non-medical use of opioids and opioid use disorders (OUD) have increased

dramatically throughout the world in recent years [2, 3]. Approximately 61 million people globally used opioids in 2020 [4, 5], with >80,000 opioid overdose deaths in the United States alone in 2021 [6].

A profound challenge both in treating and studying SUDs in human populations is the high prevalence of co-morbid conditions, including polysubstance use, comorbid psychiatric and medical disorders, and the pervasive effects of socioeconomic

¹University of Maryland School of Medicine, Baltimore, MD, USA. ²Yale School of Medicine, New Haven, CT, USA. ³Icahn School of Medicine at Mount Sinai, New York, NY, USA. ⁴University of Nebraska Medical Center, Omaha, NE, USA. ⁵Dana-Farber Cancer Institute, Harvard Medical School, Boston, MA, USA. ⁶University of California San Diego, La Jolla, CA, USA. ⁷University of Bologna, Bologna, Italy. ⁸Boston University, Boston, MA, USA. ⁹Weill Cornell Medicine, New York, NY, USA. ¹⁰Allen Institute for Brain Science, Seattle, WA, USA. ¹¹University of California Irvine, Irvine, CA, USA. ¹²McLean Hospital, Harvard Medical School, Belmont, MA, USA. ¹³University of Miami, Miami, FL, USA. ¹⁴The Scripps Research Institute, La Jolla, CA, USA. ¹⁵Broad Institute of MIT and Harvard, Cambridge, MA, USA. ¹⁶National Institute on Drug Abuse, Bethesda, MD, USA. ¹⁷Massachusetts Institute of Technology, Cambridge, MA, USA. ¹⁸Emory University School of Medicine, Atlanta, GA, USA. ✉email: sament@som.umaryland.edu

Received: 5 November 2023 Revised: 12 May 2024 Accepted: 17 May 2024

Published online: 15 June 2024

factors [4]. A particularly vexing issue is the comorbidity of SUD with Human Immunodeficiency Virus-1 (HIV) infection [7]. The HIV pandemic has been an enormous public health concern, having resulted in 75 million HIV infections and 32 million deaths worldwide since the emergence of the epidemic 40 years ago, with profound disparities by region, race, and age [8, 9]. Despite successful suppression of viremia with the advent of combination antiretroviral therapies (cART), ~50% of people with HIV (PWH) experience mostly mild neurocognitive impairments and associated forms of central nervous system dysfunction, which may be related to low-level viral replication in the brain as well as the cART therapies themselves [10]. Of the ~15 million people who inject drugs globally, 17% are PWH [11]. Conversely, it is estimated that up to 84% of PWH may have used at least one addictive substance in their lifetime [12]. Unsafe drug use increases risk of HIV infection. In addition, ~50% of PWH experience chronic pain [13–15] and are more likely to be prescribed opioids at higher doses and for longer periods of time than the general population [16–19]. OUD and problem opioid use, including high-dose opioid therapy and prescription drug misuse, are prevalent among PWH [20–25]. Moreover, substance use in PWH is associated with treatment non-adherence, increased rates of viral transmission, clinical progression of HIV disease, and greater mortality [7, 26–28]. Thus, the negative consequences of SUD and chronic HIV infection continue to be intertwined.

Basic research at the cellular level is needed to reveal the biological effects of both SUD and HIV in the brain and interactions between them. Decades of research into the neurobiological effects of addictive substances have identified three distinct behavioral stages of addiction: binge/intoxication, withdrawal/negative affect, and preoccupation/anticipation resulting in relapse to drug use [29]. These behaviors correspond to the dysregulation of neural circuits related to salience/habits, negative emotional states, and executive function, with the involvement of

the basal ganglia, extended amygdala, and prefrontal cortex, respectively [29]. But the critical cell types within these brain regions are not fully described, and the best therapeutic targets within them are not known. Likewise, extensive research has probed the neurobiological mechanisms by which HIV infection in the brain results in neuronal injury and neurocognitive symptoms even in the presence of efficacious cART. Frontostriatal circuits are implicated in HIV neuropathogenesis [10, 30, 31], as in SUD, and the neurotoxic effects of HIV are exacerbated by concomitant opioid exposure, suggesting functional overlap between the two morbidities [32–34]. A better understanding of the neural and molecular mechanisms contributing to these brain abnormalities will be essential to the development of new therapeutics to address the underlying symptoms of both disorders.

Here, we propose that to make progress in understanding the potentially intertwining biological mechanisms of SUD and HIV, we should study them in subjects affected by both morbidities. We describe the scientific and practical rationales for this strategy and how single-cell genomic studies of brain regions from individuals with SUD and HIV, as well as animal models with well-controlled induction of substance use and HIV will help address important knowledge gaps. We have formed the Single-Cell Opioid Responses in the Context of HIV (SCORCH) consortium to implement this strategy.

Molecular, cellular, and neural circuit mechanisms in SUD

SUDs are associated with changes in behavior that persist long after the cessation of drug use, mediated in part by well-characterized changes in the function of the mesolimbic dopamine (DA) system. Central nodes of this system include the dopaminergic neurons of the ventral tegmental area (VTA) and substantia nigra (SNc), as well as downstream targets such as the nucleus accumbens (NAc), prefrontal cortex (PFC), and extended amygdala circuits (Fig. 1). The activities of many other brain

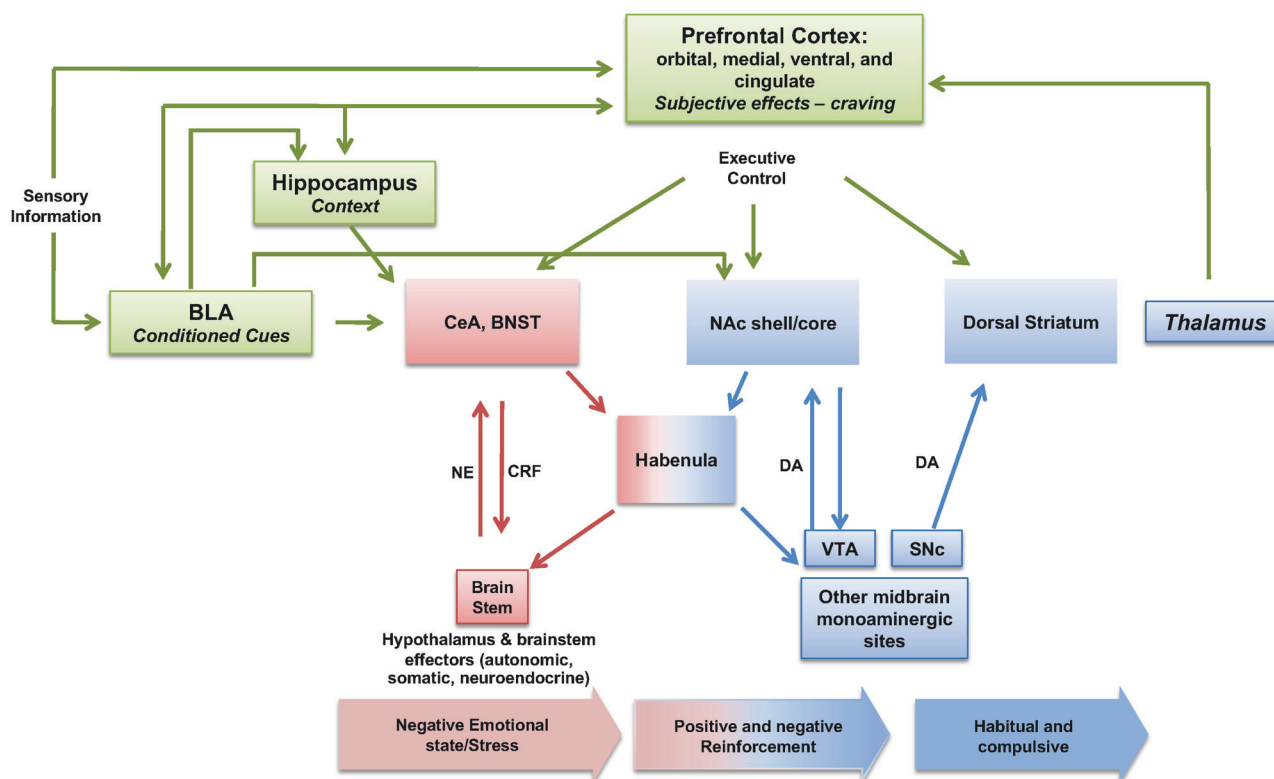


Fig. 1 Neural circuitry underlying substance use disorders and addiction. Brain regions: BLA basolateral amygdala, CeA central amygdala, BNST bed nucleus of the stria terminalis, NAc nucleus accumbens, VTA ventral tegmental area, SNc substantia nigra. Neurotransmitters: NE norepinephrine, CRF corticotropin-releasing factor, DA dopamine.

regions are also altered in the context of SUD, including the insular cortex, hippocampus, dorsal striatum, habenula, and thalamic nuclei.

The NAc is a ventral striatal region critical for drug-craving and drug-taking behaviors, as it is considered a gateway for limbic information to engage motor-related circuitry. Dopaminergic neurons from the VTA synapse on two NAc neuronal subtypes: dopamine D₁ receptor (*DRD1*)-expressing spiny projection neurons (D1R-SPNs) and D₂ receptor (*DRD2*)-expressing spiny projection neurons (D2R-SPNs). D1R-SPNs and D2R-SPNs have distinct cellular and molecular adaptations to addictive substances [35–38]. Opioids [36, 39] and psychostimulant drugs [39, 40] modify the intrinsic activity of spiny projection neurons (SPNs) and synaptic inputs to these cells. Transcriptional profiling of these cell types has revealed cell type-specific molecular regulators of drug-induced neuroplasticity and behaviors, including actin-binding proteins, epigenetic enzymes, and transcription factors [37, 41–44]. However, as described below, new subtypes of SPNs are now being discovered through single-cell genomics and related techniques, and their differential contributions to SUD are not yet fully understood.

The PFC controls executive functions that become progressively compromised in the context of addiction, leading to impulsivity, perseveration, affective instability, and drug overvaluation. The PFC's glutamatergic projections to SPNs in the NAc have a major influence on the reinstatement of drug-seeking behavior in rodents [45]. The imbalance of PFC glutamate homeostasis is thought to contribute to drug relapse, as elevated extracellular glutamate levels are seen at PFC-NAc synapses during the resumption of extinguished drug-seeking behaviors, while the depotentiation of this circuit impairs drug-seeking behaviors [46–48]. Long-term abstinence from addictive substances is associated with changes in synaptic plasticity, such as glutamatergic receptor subunit composition and maturation of silent synapses [49, 50].

Addictive substances, including opioids, produce initial intoxication, followed by tolerance and the escalation of intake with continued use. Withdrawal is characterized by negative emotional states, including anxiety, dysphoria, emotional pain, irritability, and sleep disturbances, thereby contributing to compulsive drug seeking and taking [51]. Extended amygdala circuitry, comprising several basal forebrain structures – e.g., bed nucleus of the stria terminalis, central nucleus of the amygdala, and substantia innominata – is key to these negative emotional states and motivation to continue to engage in and escalate drug intake [51]. The central nucleus of the amygdala is crucially involved in the development of morphine withdrawal-induced conditioned place aversion but has less influence on somatic signs of withdrawal [52]. Reciprocal connections have been found between the basolateral amygdala and the hippocampus, sensory association areas, and cortical regions. These reciprocal circuits participate in the encoding and relay of information associated with emotional valence, including drug-related cues [53–56], playing key roles in relapse in animal models of the reinstatement of drug seeking and taking behaviors [55–57].

While much attention has focused on the effects of SUD within neurons, addictive substances also induce changes in glia that contribute to their effects on neural circuits. For instance, astrocytic morphology and expression of the glial glutamate transporter *SLC1A2* (also known as EAAT2 or GLT-1) are affected by exposure to addictive substances [58]. In addition, psychostimulants such as cocaine activate striatal microglia and release of glial cytokines, such as tumor necrosis factor α , which regulate synaptic and behavioral responses to cocaine [59]. Genes related to activity within oligodendrocytes have similarly been affected by various cocaine exposure paradigms.

Persistent cell type-specific changes in gene regulation underlie the altered states of these mesolimbic circuits in addiction.

Transcription factors (TFs), such as the truncated form of *FOSB* (Δ FosB), phosphorylated cyclic adenosine monophosphate response element binding protein (pCREB), early growth response protein 1/2/3 (*EGR1/2/3*), and nuclear factor κ B (NF κ B), regulate the expression of drug-responsive genes [60–65], and altered activity of these TF networks is thought to promote aberrant plasticity and addiction-like behaviors [37, 60, 63, 65, 66]. MicroRNAs and other non-coding RNAs with regulatory functions are also altered in the brain with exposure to addictive substances and can functionally regulate drug intake in animal models [67, 68]. These gene regulatory changes may occur either in parallel or downstream of disrupted signaling cascades regulated by such molecules as the serum/glucocorticoid-regulated protein kinase 1 (*SGK1*) [69] and brain-derived neurotrophic factor (BDNF)-TrkB (encoded by *NTRK2*) [70, 71].

Chronic exposure to addictive substances also leads to long-lasting changes in chromatin states, with causal roles established for several epigenetic regulatory proteins. Post-translational modifications of histones play critical roles in the activity of promoters, enhancers, and other gene regulatory elements. Histone lysine acetylation, enriched in active regulatory regions, is increased in the NAc after chronic drug use [72–76], and enzymes modifying histone acetylation modulate opioid- [43, 75–79] and cocaine- [73, 74, 80–83] induced reward. In contrast, di-methylation at lysine 9 on the histone 3 tail (H3K9me₂), associated with transcriptional repression, is reduced, and its demethylase, *EHMT2* (also known as G9a) modulates behavioral responses to opioids and cocaine [84–86]. DNA methylation at CpG sites generally leads to transcriptional silencing. Long-term withdrawal from cocaine leads to time-dependent increases in DNA methylation [87], and emerging evidence suggests similar effects in opioid withdrawal [88, 89]. Perturbation of the enzymes involved in the deposition and maintenance of DNA methylation modulates cocaine-induced behavioral plasticity [88–90]. However, the directionality of drug-induced changes in DNA methylation and correlations with changes in drug-induced gene expression are not fully understood. Further exploration into how drugs alter transcriptional activity within the brain will be critical in understanding how long-term effects in neuroplasticity and behavior occur.

Molecular, cellular, and neural circuit mechanisms in HIV, HIV-induced CNS dysfunction, and shared mechanisms with SUD

HIV enters the brain early after infection by transmigration of infected monocytes, macrophages, and T cells through the blood-brain barrier, and it remains in the central nervous system (CNS) for life [91–93]. HIV subsequently spreads throughout the brain, establishing persistent infection primarily in CNS-resident myeloid cells, microglia, and perivascular macrophages. Neurons are not considered to be major targets of infection or viral integration. Prior to the introduction of cART, productively infected brain macrophages and microglia were considered to be the main cellular substrates responsible for pathogenesis of HIV encephalitis and dementia in persons with AIDS. Initiation of cART and life-long treatment adherence reduces HIV burdens to residual levels, prevents (or reverses) immunodeficiency, prevents severe HIV-related diseases, and allows people to live with HIV with near-normal life expectancies. Nevertheless, up to 50% of PWH on stable, HIV suppressive cART develop a range of neurological complications [94]. In the cART era, HIV-associated cognitive diseases are largely a spectrum of minimal to moderate neurocognitive impairments (NCI), which are diagnosed with neuropsychological tests and measures of daily activities [94, 95]. The impairments have been referred to as HIV-Associated Neurocognitive Disorders (HAND), HIV-NCI, or NeuroHIV, and they represent the majority of HIV induced CNS dysfunction currently diagnosed in PWH.

The molecular, cellular, and neural circuit mechanisms of HIV-induced CNS dysfunction are not fully understood. These dysfunctions occur even in the presence of low virus burden in the CNS, estimated in some studies at 4000 viral copies/gram brain tissue [96], and absent the major neuropathologies seen in HIV brain diseases prior to cART introduction [95, 96]. HIV's persistence in the body in the presence of cART occurs via cells that harbor genome-integrated HIV proviral DNA, which allow the virus to persist and replicate despite cART's blockade of the transmission of virions to uninfected cells. The brain has unique features to serve as an HIV reservoir. The blood-brain barrier prevents efficient drug penetration of many antiretroviral drugs. Also, brain-resident immune cells have reduced immune surveillance and poor viral genetic information exchange compared to peripheral immune cells. In the brain, HIV DNA and RNA have been detected primarily in brain macrophages/microglia, and to a much lesser extent, astrocytes. However, brain immune cells exist in diverse homeostatic and reactive states [97]. The precise identities, characteristics, and distribution within the brain of these infected cells are uncertain, as are the neural mechanisms by which infected cells mediate HIV-induced CNS dysfunction.

Recent findings indicate that HIV-induced cognitive impairments are associated with persistent low-level neuroimmune activation, suggesting that HIV disrupts CNS immune homeostasis. The induction of blood-brain barrier damage, neuroinflammation, and neuronal injury by brain-resident HIV are proposed to occur through both indirect and direct mechanisms [91, 98]. In the direct mechanism, cellular injury is induced by soluble viral proteins such as Tat, Nef, Vpr, and gp120 acting at a distance from infected cells by interacting with neuronal cell surface proteins, such as *N*-methyl-D-aspartate (NMDA) and chemokine receptors [99]. In the indirect mechanism, infected and/or activated immune cells and astrocytes release neurotoxic/neuroinflammatory factors [100], including reactive oxygen species, cytokines, and glutamate, that induce apoptosis within neighboring neurons [101]. Astrocytes in the brains of PWH may alter glutamatergic-related plasticity, as there are reports of reduced functioning of excitatory amino acid transporters *SLC1A2* and *SLC1A3* (also known as EAAT2 and EAAT1, respectively) following exposure to the HIV Tat protein product [102].

The downstream impacts of HIV-induced neuroinflammation and neuroreactive viral proteins within neural systems remain controversial [91, 96, 99]. Microglial infection results in down-regulation of genes related to neuronal support and synaptic regulation, including in PWH without active viral replication in the brain [103]. The dopaminergic system is heavily impacted, with the striatum and substantia nigra exhibiting high amounts of inflammation and pathology [104–106]. Reductions of dopamine in cerebrospinal fluid and of dopaminergic signaling in the brain correlate with worse cognitive symptoms [107, 108]. The serotonergic system is also impacted. Expression of the serotonin transporter (SERT, encoded by *SLC6A4*) is upregulated, likely leading to decreased synaptic levels of serotonin in the brains of simian HIV-infected rhesus macaques, which are infected with a simian-human hybrid immunodeficiency virus, as well as in PWH [109, 110]. PWH are twice as likely to be diagnosed with major depressive disorder and are responsive to serotonin reuptake inhibitors [110, 111]. The underlying mechanisms driving these changes in dopaminergic and serotonergic activity remain unclear.

Although transcriptional regulators of HIV integration are well-characterized in peripheral blood, those responsible for brain integration and potentially CNS symptoms remain poorly characterized. In terms of infection, HIV is an RNA virus that undergoes reverse transcription to convert into a DNA provirus. These proviruses are packaged by nucleosomes and regulated by host and viral transcription factors. Studies performed primarily in peripheral immune cells have shown that the activity of

epigenetic enzymes and transcription factors, such as Tat, are crucial for both integration into the host genome and latent stages following cART [112]. This includes histone acetylation, which facilitates HIV integration [113], and histone methyltransferases such as *EHMT1* and *EZH2*, which are implicated in HIV viral latency mechanisms [114, 115]. Under cART, HIV can enter latent stages through transcriptional silencing, which allows the virus to continue to exist, then at later times undergo reactivation via activity of transcription factors such as NFκB [116]. Epigenetic mechanisms are proposed to allow for HIV persistence following cART [117], yet the precise mechanisms at play in HIV persistence and HIV-induced CNS dysfunction following cART are unknown. Of note, the molecular mechanisms of HIV latency in brain immune cells may differ from what has been described in peripheral T cells [118]. New studies are needed to characterize the chromatin landscape within HIV+ tissues, and in particular brain, to reveal the transcriptional regulatory mechanisms underlying HIV infection and persistence.

The interactions between HIV and SUD pathophysiologies are complex, and substance use in PWH is associated with worse clinical outcomes. Efforts to dissect the effects of these conditions in the human CNS have employed neuroimaging, cerebrospinal fluid, and blood biomarkers, and neuropsychiatric assessments. However, there is a paucity of knowledge of how drug use changes the course of HIV pathogenesis and latency, and several mechanisms have been proposed. Some plausible mechanisms involve the shared effects of SUD and HIV and induced CNS dysfunction on neuroinflammation [119–121], which may be exacerbated by interactions between opioids and HIV proteins that affect the functioning of neurons [122–124], astrocytes [121, 123, 125–127], and/or microglia [123, 128–130]. Opioids may increase HIV pathogenesis by increasing the number of infected circulating monocytes [131]. This likely occurs via a dopamine-dependent mechanism, as monocytes express dopamine receptors and are responsive to dopamine receptor agonists [132]. Opioids may also directly impact HIV infection and neuroinflammation through opioid receptors, which are expressed by many cell types. Monocytes, microglia, and astrocytes express all three opioid receptor subtypes: mu, kappa, and delta [133, 134]. Addictive substances may also influence viral replication by altering the activity of transcription factors, such as CREB, that are both affected by addictive substances and part of signaling systems that promote HIV replication [135]. However, it is unknown whether opioid-related mechanisms converge with and promote HIV neuropathology. Studies to identify common molecules within the above-described brain regions and cell types are needed to understand how the interaction of opioids and HIV influences pathogenesis,

Insights into SUD and HIV from single-cell genomics

Epigenetic regulation plays important roles in both SUD and the persistence of HIV in the brain. However, the cell type-specific transcriptional and epigenomic mechanisms underlying disease-associated neuroinflammation and neuroplasticity are unclear. Single-cell genomics, along with emerging spatial transcriptomics technologies, have given researchers a powerful new approach to profile the inner workings of cellular subtype mechanisms, both in human post-mortem brain tissue and in animal models. These technologies have been used to identify and classify subpopulations of neurons and glia [136–138], and trace cellular dynamics and gene expression across cell states, including disease progression [139–141]. The neuroscience field has had difficulty with isolating intact whole single-cells, especially from frozen brain tissue, as neurons are morphologically complex with long axons and dendritic processes. Fortunately, isolating cellular nuclei from frozen brain tissues for single-nucleus genomic profiling has proven to be a viable alternative and has been swiftly implemented within the field. Importantly, gene expression

profiles derived from neuronal nuclei vs. whole cells are highly concordant [142]. Single-nucleus RNA sequencing (snRNA-seq) in frozen tissue has been shown to be successful in profiling synaptic [143–146] and microglial [139, 141, 147] transcripts and decouples tissue dissection from sample processing [148].

Single-cell and spatial genomic studies have already made substantial inroads to elucidate the diversity of cell types in cortical and subcortical brain regions relevant to SUD and HIV [136, 137, 149–152]. snRNA-seq has revealed hundreds of transcriptionally distinct cell populations in these brain regions. Single-cell epigenomic profiling of chromatin accessibility (scATAC-seq) and DNA CpG methylation (scMethyl-seq) have revealed cell type-specific regulatory elements [142, 153, 154]. Spatial transcriptomics and multimodal characterization demonstrate that most of these transcriptomic populations correspond to bona fide cell types with distinct spatial distributions and morphological and physiological characteristics [137].

An illustrative example is the spiny projection neurons of the striatum. SPNs represent >90% of striatal neurons. As noted above, there are two major SPN populations that express dopamine D₁ and D₂ receptors, respectively. In addition, SPNs located in different striatal subregions have distinct projection patterns and physiological characteristics. However, the molecular identities of these cells were not well understood. Single-cell and spatial profiling have revealed at least 10–20 transcriptionally distinct SPN subtypes [136, 150, 152, 155–158]. These studies defined molecular markers for discrete subtypes of D₁ and D₂ SPNs, including in striosome vs. matrix subcompartments of the dorsal striatum [159], as well as in core vs. shell regions of the nucleus accumbens [152]. Additional markers defined continuous variation in SPNs along the dorsoventral and rostrocaudal axes [150, 152]. Surprisingly, many studies revealed that a substantial proportion of SPNs have atypical characteristics, such as co-expression of D₁ and D₂ receptors, along with additional markers that distinguish them from canonical SPN subtypes [136, 150, 152]. Single-cell epigenomic data are beginning to elucidate the regulatory networks contributing to SPN diversity and will likely enable the development of new genetic tools for functional perturbation of specific SPN subtypes [156, 157, 160]. We anticipate that higher resolution molecularly-defined SPN subtypes will have distinct functions in SUD and HIV, extending previous work on subtypes defined by other approaches. Despite this progress, a substantial issue is the lack of a consensus atlas for SPN subtypes, and it is unclear how reproducible these subtypes will be across conditions and species. Arriving at a consensus on these issues will be necessary to enable comparisons across studies [161]. At present, snRNA-seq atlases for the diversity of neurons in some other brain regions relevant to SUD and HIV remain rudimentary.

Single-cell genomics studies have begun to profile the molecular changes in brain cell types in the context of SUD and HIV. Studies related to SUD have used human post-mortem brain tissue [141, 149, 162], animal models [163–167], and human pluripotent stem cells [168–170]. These studies provide several insights. First, gene expression changes associated with drug exposure are detected in all major neuronal and non-neuronal cell types, suggesting widespread effects in the brain. Second, most studies have detected changes in transcriptional signatures related to neuroinflammation. Third, changes in the expression of synaptic genes are detected in certain neuronal subtypes, perhaps describing forms of neuroplasticity. Fourth, transcription factors and chromatin remodeling factors are enriched among cell type-specific differentially expressed genes, providing insights into the regulation of these neuroinflammatory and neuroplasticity gene signatures.

Single-cell genomic studies on the effects of HIV in the brain initially focused on the roles of brain immune cells [103, 165, 171–175]. These studies provided insight into the brain cell types that serve as persistent reservoirs for HIV in the presence

of cART, as well as characterizing the specific reactive and inflammatory states associated with infection. Broader profiling of the CNS is beginning to emerge, including interactions between infection and addictive substances [103, 165]. Unbiased profiling of transcriptional changes in brain cell types will provide insight into the mechanisms of neurodegeneration, as well as transcriptional correlates of neurocognitive and neuropsychiatric phenotypes.

These initial single-cell genomic studies of SUD and HIV demonstrate promise. However, most studies have been done in animal and cell models, as well as in the cerebrospinal fluid and other accessible tissues of PWH. The specific neuroinflammatory, synaptic, and gene regulatory changes appear to be context-specific, varying across brain regions, cell types, drugs, and stages of addiction, and the diversity of these conditions has not been adequately sampled. Large coordinated studies in both humans and model systems are needed to overcome these limitations and arrive at rigorous conclusions.

The SCORCH Consortium: single-cell genomic studies of SUD and HIV in humans and model systems

There remain substantial gaps in our understanding of how SUD and HIV alter biological processes in the brain. Much of what we know about these effects has been learned through experimental studies in animal and cellular models. It is essential to study the human condition, as models do not perfectly recapitulate the human brain nor the real-world conditions of SUD and HIV. Studying the human condition, however, has inherent challenges. This is, in part, due to the wide-ranging symptoms from HIV and SUD, which include variable patterns of behavioral and neurocognitive impairments, peripheral and neural immune suppression, and altered pain responses. A variety of factors exacerbate these symptoms, related to the onset of drug use/escalation throughout HIV disease progression and type of drug use (i.e., drug class and polydrug use) [51]. Epidemiological studies have identified genetic and environmental risk factors [176–178]. The most severe effects of SUD are observed in only ~10% of PWH who use addictive substances. Similarly, the more severe manifestations of HIV-induced neurocognitive dysfunction are currently observed in <5% of PWH, suggesting substantial variation and resilience in many individuals. In both SUD and HIV, it remains largely unknown how brain circuits mediate the effects of these exposures and risk factors. It is difficult for researchers to properly control for these factors across cohorts in human studies, so parallel studies are needed to comprehensively model these variables in tractable animal models of SUD and HIV-induced CNS dysfunction [179, 180] and to correlate findings from these models with the patterns detected in humans. Overall, given the rampant escalation of drug use in the United States and high prevalence of HIV in intravenous drug users, further investigation of the synergistic and long-term effects of HIV and SUD in humans remain an urgent public health priority.

Here, we propose that studying SUD and HIV together represents a promising strategy to understand both disorders. SUD and HIV influence many of the same biological systems, including shared effects on neural circuits related to reward and cognition, persistent neuroinflammation, shared effects on neurotransmitter systems (e.g., dopaminergic signaling), and preliminary evidence of shared effects on transcriptional regulatory programs. Since these mechanisms at least partially overlap between the two disorders, studies designed to investigate these conditions together can provide key insights into both disorders. In addition, we believe that understanding the interactions between these two conditions will provide generalizable insights into the mechanisms underlying clinical variation more broadly. Thus, this strategy will provide benefits not only for understanding the interactions between SUD and HIV, but also for understanding their effects more broadly.

Studies of SUD in the context of HIV also benefit from unique brain tissue resources developed by the Neuro-HIV research community. The National NeuroAIDS Tissue Consortium (NNTC) was established in 1998 to collect, store, and distribute biosamples collected from PWH, as well as unaffected individuals, to support researchers around the world and further our knowledge of nervous system disorders resulting from HIV infection [181, 182]. The NNTC's unique contribution is its well-characterized and high-quality specimens. Extensive efforts have been made to collect comprehensive neuromedical, neuropsychological, and psychiatric data prior to death. Detailed pathological evaluations of brain, spinal cord, and peripheral organs are conducted post-mortem, and samples are then banked according to strict established protocols to ensure uniformity across the four clinical sites. As of November 2, 2022, 3322 participants had enrolled in the clinical evaluation/tissue donation program, and 2,303 individuals have donated CNS material to the bank. Psychiatric evaluations indicate 381 participants with a lifetime history of opioid use/dependence, as well as 892 with cocaine dependence, 193 for hallucinogens, 237 for sedatives, 468 for stimulants, and 1112 for alcohol. These numbers are nonexclusive, as polysubstance use is not uncommon. Additional criteria are available to determine which of these participants may be most suitable to build cohorts for studies of SUD in the context of HIV. Resources from the NNTC complement other brain banks focused specifically on SUD, which have smaller numbers of samples but are more strongly enriched for severe cases and for donors who died from drug overdose. Additional brain banks have donor tissue without HIV or SUD, as well as with or without other conditions.

The SCORCH consortium was formed by the National Institute on Drug Abuse in 2020 to support collaborative genomic studies of SUD and HIV (Fig. 2A). The primary strategy of the SCORCH consortium is to gain insights into cellular and molecular mechanisms of SUD, HIV, and SUD + HIV by generating single-cell transcriptomic and epigenomic data in affected brain regions from hundreds of human donors, as well as from specialized animal models. These data will be analyzed to characterize the diversity of cell types in each of the affected brain regions, catalog the cell type-specific changes in gene expression and chromatin accessibility, and compare these effects to related neurodegenerative and neuropsychiatric conditions. Cellular and molecular targets will then be validated through various methods, including CRISPR technology, organoids, and *in situ* hybridization.

The first goal of SCORCH analyses will be to classify the diversity of cell types in each brain region relevant to SUD and HIV. As the literature suggests changes in numerous brain regions, our studies collectively will characterize more than 15 brain regions (Fig. 2B). Of these, we will focus most intensively on several nodes in the reward system that are strongly implicated in SUD, including sub-regions of PFC (specifically, Brodmann Area 9), dorsal and ventral striatum (including NAc), and amygdala, all of which will be characterized by multiple groups utilizing human brain tissue, as well as both non-human primate and rodent models. Data from large cohorts will be required — especially from human samples — to overcome the inherent heterogeneity of post-mortem brain tissue samples with respect to tissue quality, as well as biological variation due to disease states, covariates such as age and sex, and other factors. SCORCH intends to generate datasets on the scale of a million cells or more from each of the targeted brain regions. Existing atlases of cell types in these regions range widely in their maturity, both as reconstructed from single-cell genomics, as well as more traditional anatomical and functional approaches. Robust, large-scale analyses will require consistent naming conventions with corresponding consistency in the use of diagnostic marker genes. Therefore, we will partner with other researchers, including the BRAIN Initiative Cell Atlas Network, to derive consensus models for the cell types in each of these brain regions.

These comparative cell type atlases will be facilitated by state-of-the-art approaches for single-cell genomic data integration. Recent analyses by BRAIN Initiative researchers have demonstrated the feasibility of combining single-cell genomic data across species to compare brain cell types at fine resolution [183]. Alternative approaches compare cell types based on shared marker genes without requiring direct integration [184]. Leaning on reference atlases from non-diseased individuals will help ensure the robustness of cell type annotations. Both SCORCH-produced and external reference atlases will also provide complementary information about the spatial positioning of cell types within brain regions, as well as neuronal morphology, projection patterns, and physiological properties [137, 185–187].

The second goal of SCORCH analyses will be to characterize the gene expression and chromatin accessibility changes in each cell type within the affected brain regions. We hypothesize that many of these changes will relate to neuroinflammation, neuroplasticity, and gene regulatory processes, building on previous studies. To elucidate these disease processes, we will interpret our data in the context of gene networks reconstructed from our data and prior knowledge about the functional interactions among genes. An important component of our studies will be to compare data from human cohorts with SUD and HIV to data from animal models generated both within and outside the consortium. Animal models allow experimental evaluation of variables such as the effects of single versus multidrug use, drug doses, age, sex, and time of drug administration versus time of HIV infection. For instance, we may find distinct signatures of injected vs. prescription opioids, which have different underlying psychopathologies. SCORCH researchers will investigate both opioid drugs and stimulants such as methamphetamines and cocaine. As noted above, all of these drugs have long-lasting effects on neural circuits related to addiction, likely involving both shared and distinct molecular signatures. The most robust gene associations across human and animal model datasets will be revealed via meta-analyses. We will also perform comparative analyses to assess similarities and differences of the cell type-specific gene expression and chromatin accessibility changes in SUD and HIV vs. other neurodegenerative and neuropsychiatric conditions. In particular, snRNA-seq of neocortical regions is available from large cohorts with Alzheimer's disease [188, 189], schizophrenia [190], autism spectrum disorders [140, 191], and mood disorders [192], all of which may involve shared molecular signatures with SUD and HIV [193]. Cell type-specific expression quantitative trait loci derived from our data will be used to fine-map risk loci from genome-wide association studies of HIV-induced CNS dysfunction and SUD.

We will consider diverse approaches to elucidate biological signatures of exposure to addictive substances and HIV infection and to compare them across conditions and species. Similar analyses have recently been undertaken to compare gene expression dynamics during brain development across species and brain regions. Successful strategies for this included meta-analyses of gene co-expression modules [194], as well as structured joint decomposition and transfer learning techniques [195]. Similarly, we can identify a gene signature of substance use in one condition (say, a well-controlled animal model) then project that signature into datasets from humans with SUD. Gene signatures can also be interpreted with respect to biological processes such as neuroinflammation or activity-dependent gene expression.

Validation experiments will complement these sequencing data, including examining brain tissue from these and other cases for cell- and site-specific expression patterns of differentially expressed genes by *in situ* hybridization, immunohistochemistry, or spatial transcriptomics. Our investigators will also study the top differentially expressed genes using human pluripotent-stem cell-derived neuronal culture systems, in combination with *in vitro* HIV infection and/or stimulation with addictive substances. At a more physiological level, validation experiments will be conducted in

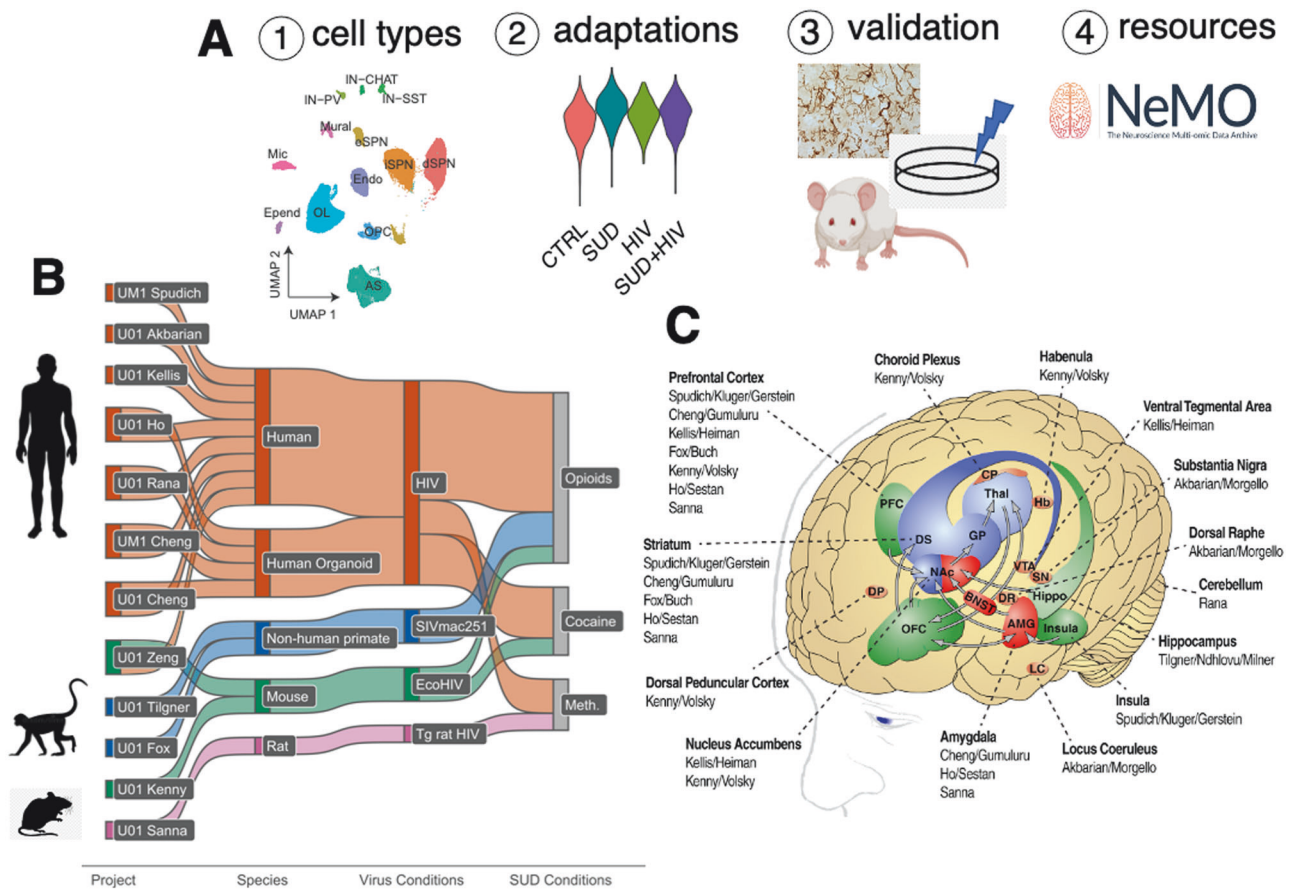


Fig. 2 The Single-cell opioid responses in the context of HIV (SCORCH) consortium. **A** The SCORCH consortium will characterize the effects of SUD and HIV in the brain by elucidating the diversity of cell types (1) and cell type-specific molecular adaptations (2) via single-cell genomics in multiple brain regions of humans, non-human primates, and rodents. Key results will be validated through orthogonal approaches, including spatial transcriptomic profiling of brain tissues and genetic perturbation studies in human organoids and rodent models. (3). Data resources from these experiments will be publicly available through the SCORCH Data Center (4). **B** Data will be collected across 12 projects using brain tissue from humans, non-human primates, and rodent models. **C** Collectively, SCORCH researchers will investigate >15 brain regions relevant to SUD and HIV.

suitable animal models of HIV-induced CNS dysfunction and drug administration. In rodent, selected genes identified in our studies can be manipulated using cell subtype-specific genetic tools, including viral and transgenic vectors. Promising molecules could be targeted with pharmacological approaches for translation back to clinical populations. We expect these results will facilitate the identification and functional characterization of cellular circuits and cell type-specific transcripts related to SUD in the context of HIV infection, CNS dysfunction, and its subclassifications.

Finally, a fundamental goal of the SCORCH consortium is to make data resources available to the broader research community, consistent with data FAIRness (Findable, Accessible, Interoperable, Reusable) [196]. We intend to make both raw and processed data available in a timely fashion through the SCORCH Data Center, including metadata required for secondary analyses. In addition, we intend to develop SCORCH web resources (scorch.igs.umaryland.edu), building on an existing web portal to search and access single-cell genomic datasets (nemoarchive.org), cloud-computing environment for large-scale data processing using consensus pipelines (terra.bio), and tools for web-based data visualization and analysis (nemoanalytics.org) [197, 198]. Harmonized molecular and single cell HIV/SUD data sets will enable data mining by the scientific community to identify HIV and/or SUD biomarkers and identify candidate pathways for therapeutic intervention.

Advancing our knowledge of the interactions between SUD, HIV infection and HIV induced CNS dysfunction, and the underlying

mechanisms requires this precise transcriptome and chromatin cellular resolution that can be integrated with available SUD and HIV and single-cell datasets. The SCORCH collaborative research teams are uniquely poised to achieve these goals and advance the field toward enhanced mechanistic knowledge that has translational impact on SUD and HIV clinical populations. Overall, the SCORCH consortium seeks to address, at the single-cell level, critical gaps in our understanding of the molecular and cellular perturbations in the brain in individuals with SUDs, HIV infection, and a confluence of these conditions.

REFERENCES

1. Peacock A, Leung J, Larney S, Colledge S, Hickman M, Rehm J, et al. Global statistics on alcohol, tobacco and illicit drug use: 2017 status report. *Addiction*. 2018;113:1905–26.
2. Han B, Volkow ND, Compton WM, McCance-Katz EF. Reported heroin use, use disorder, and injection among adults in the United States, 2002–2018. *JAMA*. 2020;323:568–71.
3. Volkow ND, McLellan TA. Curtailing diversion and abuse of opioid analgesics without jeopardizing pain treatment. *JAMA*. 2011;305:1346–7.
4. Herlinger K, Lingford-Hughes A. Opioid use disorder and the brain: a clinical perspective. *Addiction* (Abingdon, England). 2022;117:495–505.
5. United Nations Office on Drugs and Crime (UNODC). World Drug Report. 2021. Available from: <https://www.unodc.org/unodc/en/data-and-analysis/wdr2021.html>
6. Ahmad FB, Cisevski JA, Rossen LM, Sutton P. Provisional drug overdose death counts. National Center for Health Statistics. 2023. Available from: <https://www.cdc.gov/nchs/nvss/vsrr/drug-overdose-data.htm>

7. Volkow ND, Normand J. The international HIV/AIDS pandemic has been closely inter-twinced with drug abuse and addiction from the time it began. Preface. *Drug Alcohol Depend.* 2013;132:51.
8. de Cock KM, Jaffe HW, Curran JW. Reflections on 40 Years of AIDS. *Emerg Infect Dis.* 2021;27:1553.
9. Sullivan PS, Satcher Johnson A, Pembleton ES, Stephenson R, Justice AC, Althoff KN, et al. Epidemiology of HIV in the USA: epidemic burden, inequities, contexts, and responses. *Lancet.* 2021;397:1095–106.
10. Ellis R, Langford D, Masliah E. HIV and antiretroviral therapy in the brain: neuronal injury and repair. *Nat Rev Neurosci.* 2007;8:33–44.
11. Degenhardt L, Peacock A, Colledge S, Leung J, Grebely J, Vickerman P, et al. Global prevalence of injecting drug use and sociodemographic characteristics and prevalence of HIV, HBV, and HCV in people who inject drugs: a multistage systematic review. *Lancet. Glob Health.* 2017;5:e1192–e1207.
12. Amin P, Douaihy A. Substance use disorders in people living with human immunodeficiency virus/AIDS. *Nurs Clin N Am.* 2018;53:57–65.
13. Ventuneac A, Hecht G, Forcht E, Duah BA, Tarar S, Langenbach B, et al. Chronic high risk prescription opioid use among persons with HIV. *Front Sociol.* 2021;6:645992.
14. Parker R, Stein DJ, Jelsma J. Pain in people living with HIV/AIDS: a systematic review. *J Int AIDS Soc.* 2014;17:18719.
15. Miaskowski C, Penko JM, Guzman D, Mattson JE, Bangsberg DR, Kushel MB. Occurrence and characteristics of chronic pain in a community-based cohort of indigent adults living with HIV infection. *J Pain.* 2011;12:1004–16.
16. Canan C, Alexander GC, Moore R, Murimi I, Chander G, Lau B. Medicaid trends in prescription opioid and non-opioid use by HIV status. *Drug Alcohol Depend.* 2019;197:141–8.
17. Canan CE, Chander G, Monroe AK, Gebo KA, Moore RD, Agwu AL, et al. High-risk prescription opioid use among people living with HIV. *J Acquir Immune Defic Syndr.* 2018;78:283–90.
18. Lemons A, DeGroot N, Pérez A, Craw J, Nyaku M, Broz D, et al. Opioid misuse among HIV-positive adults in medical care: results from the Medical Monitoring Project, 2009–2014. *J Acquir Immune Defic Syndr.* 2019;80:127–34.
19. Merlin JS, Long D, Becker WC, Cachay ER, Christopoulos KA, Claborn K, et al. Brief report: the association of chronic pain and long-term opioid therapy with HIV treatment outcomes. *J Acquir Immune Defic Syndr.* 2018;79:77–82.
20. Edelman EJ, Gordon K, Becker WC, Goulet JL, Skanderson M, Gaither JR, et al. Receipt of opioid analgesics by HIV-infected and uninfected patients. *J Gen Intern Med.* 2013;28:82–90.
21. Hartzler B, Dombrowski JC, Crane HM, Eron JJ, Geng EH, Christopher Mathews W, et al. Prevalence and predictors of substance use disorders among HIV care enrollees in the United States. *AIDS Behav.* 2017;21:1138–48.
22. Tsao JCI, Plankey MW, Young MA. Pain, psychological symptoms and prescription drug misuse in HIV: a literature review. *J Pain Manag.* 2012;5:111.
23. Robinson-Papp J, Elliott K, Simpson DM, Morgello S. Problematic prescription opioid use in an HIV-infected cohort: the importance of universal toxicology testing. *J Acquir Immune Defic Syndr.* 2012;61:187–93.
24. Vijayaraghavan M, Freitas D, Bangsberg DR, Miaskowski C, Kushel MB. Non-medical use of non-opioid psychotherapeutic medications in a community-based cohort of HIV-infected indigent adults. *Drug Alcohol Depend.* 2014;143:263–7.
25. Becker WC, Gordon K, Jennifer Edelman E, Kerns RD, Crystal S, Dziura JD, et al. Trends in any and high-dose opioid analgesic receipt among aging patients with and without HIV. *AIDS Behav.* 2016;20:679–86.
26. Degenhardt L, Charlson F, Ferrari A, Santomauro D, Erskine H, Mantilla-Herrera A, et al. The global burden of disease attributable to alcohol and drug use in 195 countries and territories, 1990–2016: a systematic analysis for the Global Burden of Disease Study 2016. *Lancet. Psychiatry.* 2018;5:987–1012.
27. Moore DJ, Blackstone K, Woods SP, Ellis RJ, Atkinson JH, Heaton RK, et al. Methamphetamine use and neuropsychiatric factors are associated with antiretroviral non-adherence. *AIDS Care.* 2012;24:1504–13.
28. Blackard JT, Sherman KE. Drugs of abuse and their impact on viral pathogenesis. *Viruses.* 2021;13:2387.
29. Volkow ND, Koob GF, McLellan AT. Neurobiologic advances from the brain disease model of addiction. *N Engl J Med.* 2016;374:363–71.
30. Everall I, Vaida F, Khanlou N, Lazzaretto D, Achim C, Letendre S, et al. Cliniconeuropathologic correlates of human immunodeficiency virus in the era of antiretroviral therapy. *J Neurovirol.* 2009;15:360–70.
31. Masliah E, Heaton RK, Marcotte TD, Ellis RJ, Wiley CA, Mallory M, et al. Dendritic injury is a pathological substrate for human immunodeficiency virus-related cognitive disorders. HNRC Group. The HIV Neurobehavioral Research Center. *Ann Neurol.* 1997;42:963–72.
32. Nash B, Festa L, Lin C, Meucci O. Opioid and chemokine regulation of cortical synaptodendritic damage in HIV-associated neurocognitive disorders. *Brain Res.* 2019;1723:146409.
33. Fitting S, Knapp PE, Zou S, Marks WD, Scott Bowers M, Akbarali HI, et al. Interactive HIV-1 Tat and morphine-induced synaptodendritic injury is triggered through focal disruptions in Na⁺ influx, mitochondrial instability, and Ca²⁺ overload. *J Neurosci.* 2014;34:12850–64.
34. Fitting S, Xu R, Bull C, Buch SK, El-Hage N, Nath A, et al. Interactive comorbidity between opioid drug abuse and HIV-1 Tat: chronic exposure augments spine loss and sublethal dendritic pathology in striatal neurons. *Am J Pathol.* 2010;177:1397–410.
35. Calipari ES, Bagot RC, Purushothaman I, Davidson TJ, Yorgason JT, Peña CJ, et al. In vivo imaging identifies temporal signature of D1 and D2 medium spiny neurons in cocaine reward. *Proc Natl Acad Sci USA.* 2016;113:2726–31.
36. Hearing MC, Jedynak J, Ebner SR, Ingebreton A, Asp AJ, Fischer RA, et al. Reversal of morphine-induced cell-type-specific synaptic plasticity in the nucleus accumbens shell blocks reinstatement. *Proc Natl Acad Sci USA.* 2016;113:757–62.
37. Chandra R, Chase Francis T, Konkalmatt P, Amgalan A, Gancarz AM, Dietz DM, et al. Opposing role for Egr3 in nucleus accumbens cell subtypes in cocaine action. *J Neurosci.* 2015;35:7927–37.
38. Lobo MK, Covington HE, Chaudhury D, Friedman AK, Sun HS, Damez-Werno D, et al. Cell type-specific loss of BDNF signaling mimics optogenetic control of cocaine reward. *Science.* 2010;330:385–90.
39. Graziane NM, Sun S, Wright WJ, Jang D, Liu Z, Huang YH, et al. Opposing mechanisms mediate morphine- and cocaine-induced generation of silent synapses. *Nat Neurosci.* 2016;19:915–25.
40. Kim J, Park BH, Lee JH, Park SK, Kim JH. Cell type-specific alterations in the nucleus accumbens by repeated exposures to cocaine. *Biol Psychiatry.* 2011;69:1026–34.
41. Campbell RR, Kramár EA, Pham L, Beardwood JH, Augustynski AS, López AJ, et al. HDAC3 activity within the nucleus accumbens regulates cocaine-induced plasticity and behavior in a cell-type-specific manner. *J Neurosci.* 2021;41:2814–27.
42. Engeln M, Mitra S, Chandra R, Gyawali U, Fox ME, Dietz DM, et al. Sex-specific role for Egr3 in nucleus accumbens D2-medium spiny neurons following long-term abstinence from cocaine self-administration. *Biol Psychiatry.* 2020;87:992–1000.
43. Martin JA, Werner CT, Mitra S, Zhong P, Wang ZJ, Gobira PH, et al. A novel role for the actin-binding protein drebrin in regulating opiate addiction. *Nat Commun.* 2019;10:4140.
44. Mews P, Cunningham AM, Scarpa J, Ramakrishnan A, Hicks EM, Bolnick S, et al. Convergent abnormalities in striatal gene networks in human cocaine use disorder and mouse cocaine administration models. *Sci Adv.* 2023;9:eadd8946.
45. Bossert JM, Stern AL, Theberge FRM, Cifani C, Koya E, Hope BT, et al. Ventral medial prefrontal cortex neuronal ensembles mediate context-induced relapse to heroin. *Nat Neurosci.* 2011;14:420–2.
46. Moussawi K, Pacchioni A, Moran M, Olive MF, Gass JT, Lavin A, et al. N-Acetylcysteine reverses cocaine-induced metaplasticity. *Nat Neurosci.* 2009;12:182–9.
47. Shen H, Moussawi K, Zhou W, Toda S, Kalivas PW. Heroin relapse requires long-term potentiation-like plasticity mediated by NMDA2b-containing receptors. *Proc Natl Acad Sci USA.* 2011;108:19407–12.
48. LaLumiere RT, Kalivas PW. Glutamate release in the nucleus accumbens core is necessary for heroin seeking. *J Neurosci.* 2008;28:3170–7.
49. Wolf ME. Synaptic mechanisms underlying persistent cocaine craving. *Nat Rev Neurosci.* 2016;17:351–65.
50. Lee BR, Dong Y. Cocaine-induced metaplasticity in the nucleus accumbens: silent synapse and beyond. *Neuropharmacology.* 2011;61:1060–9.
51. Koob GF. Neurobiology of opioid addiction: opponent process, hyperkatifeia, and negative reinforcement. *Biol Psychiatry.* 2020;87:44–53.
52. Watanabe T, Yamamoto R, Maeda A, Nakagawa T, Minami M, Satoh M. Effects of excitotoxic lesions of the central or basolateral nucleus of the amygdala on naloxone-precipitated withdrawal-induced conditioned place aversion in morphine-dependent rats. *Brain Res.* 2002;958:423–8.
53. Ciccocioppo R, Sanna PP, Weiss F. Cocaine-predictive stimulus induces drug-seeking behavior and neural activation in limbic brain regions after multiple months of abstinence: reversal by D(1) antagonists. *Proc Natl Acad Sci USA.* 2001;98:1976–81.
54. Janak PH, Tye KM. From circuits to behaviour in the amygdala. *Nature.* 2015;517:284–92.
55. Fuchs RA, See RE. Basolateral amygdala inactivation abolishes conditioned stimulus- and heroin-induced reinstatement of extinguished heroin-seeking behavior in rats. *Psychopharmacology.* 2002;160:425–33.
56. Yuan K, Cao L, Xue YX, Luo YX, Liu XX, Kong FN, et al. Basolateral amygdala is required for reconsolidation updating of heroin-associated memory after prolonged withdrawal. *Addict Biol.* 2020;25:e12793.
57. Marchant NJ, Kaganovsky K, Shaham Y, Bossert JM. Role of corticostriatal circuits in context-induced reinstatement of drug seeking. *Brain Res.* 2015;1628:219–32.
58. Shen HW, Scofield MD, Boger H, Hensley M, Kalivas PW. Synaptic glutamate spillover due to impaired glutamate uptake mediates heroin relapse. *J Neurosci.* 2014;34:5649–57.

59. Lewitus GM, Konefal SC, Greenhalgh AD, Pribragi H, Augereau K, Stellwagen D. Microglial TNF- α suppresses cocaine-induced plasticity and behavioral sensitization. *Neuron*. 2016;90:483–91.
60. Walker DM, Cates HM, Loh YHE, Purushothaman I, Ramakrishnan A, Cahill KM, et al. Cocaine self-administration alters transcriptome-wide responses in the brain's reward circuitry. *Biol Psychiatry*. 2018;84:867–80.
61. Salery M, Dos Santos M, Saint-Jour E, Moumné L, Pagès C, Kappès V, et al. Activity-regulated cytoskeleton-associated protein accumulates in the nucleus in response to cocaine and acts as a brake on chromatin remodeling and long-term behavioral alterations. *Biol Psychiatry*. 2017;81:573–84.
62. Grueter BA, Robison AJ, Neve RL, Nestler EJ, Malenka RC. Δ FosB differentially modulates nucleus accumbens direct and indirect pathway function. *Proc Natl Acad Sci USA*. 2013;110:1923–8.
63. McDaid J, Dallimore JE, Mackie AR, Napier TC. Changes in accumbal and pallidal pCREB and deltaFosB in morphine-sensitized rats: correlations with receptor-evoked electrophysiological measures in the ventral pallidum. *Neuropsychopharmacology*. 2006;31:1212–26.
64. Piechota M, Korostynski M, Solecki W, Gieryk A, Slezak M, Bilecki W, et al. The dissection of transcriptional modules regulated by various drugs of abuse in the mouse striatum. *Genome Biol*. 2010;11:R48.
65. Zachariou V, Bolanos CA, Selley DE, Theobald D, Cassidy MP, Kelz MB, et al. An essential role for DeltaFosB in the nucleus accumbens in morphine action. *Nat Neurosci*. 2006;9:205–11.
66. Carpenter MD, Hu Q, Bond AM, Lombroso SI, Czarnecki KS, Lim CJ, et al. Nr4a1 suppresses cocaine-induced behavior via epigenetic regulation of homeostatic target genes. *Nat Commun*. 2020;11:504.
67. Xu H, Brown AN, Waddell NJ, Liu X, Kaplan GJ, Chitaman JM, et al. Role of long noncoding RNA Gas5 in cocaine action. *Biol Psychiatry*. 2020;88:758–66.
68. Hollander JA, Im HI, Amelio AL, Kocerha J, Bali P, Lu Q, et al. Striatal microRNA controls cocaine intake through CREB signalling. *Nature*. 2010;466:197–202.
69. Heller EA, Kaska S, Fallon B, Ferguson D, Kennedy PJ, Neve RL, et al. Morphine and cocaine increase serum- and glucocorticoid-inducible kinase 1 activity in the ventral tegmental area. *J Neurochem*. 2015;132:243–53.
70. McGinty JF, Whitfield TW, Berglund WJ. Brain-derived neurotrophic factor and cocaine addiction. *Brain Res*. 2010;1314:183–93.
71. Koo JW, Mazei-Robison MS, Chaudhury D, Juarez B, LaPlant Q, Ferguson D, et al. BDNF is a negative modulator of morphine action. *Science*. 2012;338:124–8.
72. López AJ, Siciliano CA, Calipari ES. Activity-dependent epigenetic remodeling in cocaine use disorder. *Handb Exp Pharmacol*. 2020;258:231–63.
73. Levine AA, Guan Z, Barco A, Xu S, Kandel ER, Schwartz JH. CREB-binding protein controls response to cocaine by acetylating histones at the fosB promoter in the mouse striatum. *Proc Natl Acad Sci USA*. 2005;102:19186–91.
74. Kumar A, Choi KH, Renthal W, Tsankova NM, Theobald DEH, Truong HT, et al. Chromatin remodeling is a key mechanism underlying cocaine-induced plasticity in striatum. *Neuron*. 2005;48:303–14.
75. Browne CJ, Godino A, Salery M, Nestler EJ. Epigenetic mechanisms of opioid addiction. *Biol Psychiatry*. 2020;87:22–33.
76. Egervari G, Landry J, Callens J, Fullard JF, Roussos P, Keller E, et al. Striatal H3K27 Acetylation Linked to Glutamate Target Dysregulation in Human Heroin Abusers Holds Promise as Therapeutic Target. *Biol Psychiatry*. 2017;81:585–94.
77. Jing L, Luo J, Zhang M, Qin WJ, Li YL, Liu Q, et al. Effect of the histone deacetylase inhibitors on behavioural sensitization to a single morphine exposure in mice. *Neurosci Lett*. 2011;494:169–73.
78. Chen WS, Xu WJ, Zhu HQ, Gao L, Lai MJ, Zhang FQ, et al. Effects of histone deacetylase inhibitor sodium butyrate on heroin seeking behavior in the nucleus accumbens in rats. *Brain Res*. 2016;1652:151–7.
79. Ferguson D, Koo JW, Feng J, Heller E, Rabkin J, Heshmati M, et al. Essential role of SIRT1 signaling in the nucleus accumbens in cocaine and morphine action. *J Neurosci*. 2013;33:16088–98.
80. Taniguchi M, Carreira MB, Smith LN, Zirlin BC, Neve RL, Cowan CW. Histone deacetylase 5 limits cocaine reward through cAMP-induced nuclear import. *Neuron*. 2012;73:108–20.
81. Penrod RD, Carreira MB, Taniguchi M, Kumar J, Maddox SA, Cowan CW. Novel role and regulation of HDAC4 in cocaine-related behaviors. *Addict Biol*. 2018;23:653–64.
82. Renthal W, Maze I, Krishnan V, Covington HE, Xiao G, Kumar A, et al. Histone deacetylase 5 epigenetically controls behavioral adaptations to chronic emotional stimuli. *Neuron*. 2007;56:517–29.
83. Malvaez M, Mhijaj E, Matheos DP, Palmery M, Wood MA. CBP in the nucleus accumbens regulates cocaine-induced histone acetylation and is critical for cocaine-associated behaviors. *J Neurosci*. 2011;31:16941–8.
84. Maze I, Covington HE, Dietz DM, Laplant Q, Renthal W, Russo SJ, et al. Essential role of the histone methyltransferase G9a in cocaine-induced plasticity. *Science*. 2010;327:213–6.
85. Zhang Z, Tao W, Hou YY, Wang W, Kenny PJ, Pan ZZ. MeCP2 repression of G9a in regulation of pain and morphine reward. *J Neurosci*. 2014;34:9076–87.
86. Sun HS, Maze I, Dietz DM, Scobie KN, Kennedy PJ, Domez-Werno D, et al. Morphine epigenetically regulates behavior through alterations in histone H3 lysine 9 dimethylation in the nucleus accumbens. *J Neurosci*. 2012;32:17454–64.
87. Massart R, Barnea R, Dikshtein Y, Suderman M, Meir O, Hallett M, et al. Role of DNA methylation in the nucleus accumbens in incubation of cocaine craving. *J Neurosci*. 2015;35:8042–58.
88. Imperio CG, McFalls AJ, Hadad N, Blanco-Berdugo L, Masser DR, Colechio EM, et al. Exposure to environmental enrichment attenuates addiction-like behavior and alters molecular effects of heroin self-administration in rats. *Neuropharmacology*. 2018;139:26–40.
89. Barrow TM, Byun HM, Li X, Smart C, Wang YX, Zhang Y, et al. The effect of morphine upon DNA methylation in ten regions of the rat brain. *Epigenetics*. 2017;12:1038–47.
90. Zipperly ME, Sultan FA, Graham GE, Brane AC, Simpkins NA, Carullo NVN, et al. Regulation of dopamine-dependent transcription and cocaine action by Gadd45b. *Neuropsychopharmacology*. 2021;46:709–20.
91. Zayyad Z, Spudich S. Neuropathogenesis of HIV: from initial neuroinvasion to HIV-associated neurocognitive disorder (HAND). *Curr HIV/AIDS Rep*. 2015;12:16–24.
92. Nottet HS, Persidsky Y, Sasseville VG, Nukuna AN, Bock P, Zhai QH, et al. Mechanisms for the transendothelial migration of HIV-1-infected monocytes into brain. *J Immunol*. 1996;156:1284–95.
93. León-Rivera R, Veenstra M, Donoso M, Tell E, Berman JW, Eugenien EA, et al. Central nervous system (CNS) viral seeding by mature monocytes and potential therapies to reduce CNS viral reservoirs in the cART era. *MBio*. 2021;12:1–17.
94. Antinori A, Arendt G, Becker JT, Brew BJ, Byrd DA, Cherner M, et al. Updated research nosology for HIV-associated neurocognitive disorders. *Neurology*. 2007;69:1789–99.
95. Saylor D, Dickens AM, Sacktor N, Haughey N, Slusher B, Pletnikov M, et al. HIV-associated neurocognitive disorder - pathogenesis and prospects for treatment. *Nat Rev Neurol*. 2016;12:309.
96. Gelman BB. Neuropathology of HAND With Suppressive Antiretroviral Therapy: Encephalitis and Neurodegeneration Reconsidered. *Curr HIV/AIDS Rep*. 2015;12:272–9.
97. Paolicelli RC, Sierra A, Stevens B, Tremblay ME, Aguzzi A, Ajami B, et al. Microglia states and nomenclature: a field at its crossroads. *Neuron*. 2022;110:3458–83.
98. Marban C, Forouzanfar F, Ait-Ammar A, Fahmi F, El Mekdad H, Daouad F, et al. Targeting the brain reservoirs: toward an HIV cure. *Front Immunol*. 2016;7:397.
99. Rao VR, Ruiz AP, Prasad VR. Viral and cellular factors underlying neuropathogenesis in HIV associated neurocognitive disorders (HAND). *AIDS Res Ther*. 2014;11:13.
100. Bagashev A, Sawaya BE. Roles and functions of HIV-1 Tat protein in the CNS: an overview. *Virology*. 2013;10:358.
101. Kaul M, Garden GA, Lipton SA. Pathways to neuronal injury and apoptosis in HIV-associated dementia. *Nature*. 2001;410:988–94.
102. Ye X, Zhang Y, Xu Q, Zheng H, Wu X, Qiu J, et al. HIV-1 Tat inhibits EAAT-2 through AEG-1 upregulation in models of HIV-associated neurocognitive disorder. *Oncotarget*. 2017;8:39922–34.
103. Plaza-Jennings AL, Valada A, O'Shea C, Iskhakova M, Hu B, Javidfar B, et al. HIV integration in the human brain is linked to microglial activation and 3D genome remodeling. *Mol Cell*. 2022;82:4647–63.e8.
104. Nickoloff-Bybel EA, Calderon TM, Gaskill PJ, Berman JW. HIV Neuropathogenesis in the Presence of a Disrupted Dopamine System. *J Neuroimmune Pharmacol*. 2020;15:729–42.
105. Itoh K, Mehraein P, Weis S. Neuronal damage of the substantia nigra in HIV-1 infected brains. *Acta Neuropathol*. 2000;99:376–84.
106. Aylward EH, Henderer JD, McArthur JC, Brettschneider PD, Harris GJ, Barta PE, et al. Reduced basal ganglia volume in HIV-1-associated dementia: results from quantitative neuroimaging. *Neurology*. 1993;43:2099–104.
107. Kumar AM, Ownby RL, Waldrop-Valverde D, Fernandez B, Kumar M. Human immunodeficiency virus infection in the CNS and decreased dopamine availability: relationship with neuropsychological performance. *J Neurovirol*. 2011;17:26–40.
108. Chang L, Wang GJ, Volkow ND, Ernst T, Telang F, Logan J, et al. Decreased brain dopamine transporters are related to cognitive deficits in HIV patients with or without cocaine abuse. *Neuroimage*. 2008;42:869–78.
109. Larsson M, Hagberg L, Forsman A, Norkrans G. Cerebrospinal fluid catecholamine metabolites in HIV-infected patients. *J Neurosci Res*. 1991;28:406–9.
110. Shah S, Sinharay S, Matsuda K, Schreiber-Stainthorp W, Muthusamy S, Lee D, et al. Potential mechanism for HIV-associated depression: upregulation of serotonin transporters in SIV-infected macaques detected by 11C-DASB PET. *Front Psychiatry*. 2019;10:362.

111. Rabkin JG, Wagner GJ, Rabkin R. Fluoxetine treatment for depression in patients with HIV and AIDS: a randomized, placebo-controlled trial. *Am J Psychiatry*. 1999;156:101–7.
112. Shirazi J, Shah S, Sagar D, Nonnemacher MR, Wigdahl B, Khan ZK, et al. Epigenetics, drugs of abuse, and the retroviral promoter. *J Neuroimmune Pharmacol*. 2013;8:1181–96.
113. Bushman F, Lewinski K, Ciuffi A, Barr S, Leipzig J, Hannehalli S, et al. Genome-wide analysis of retroviral DNA integration. *Nat Rev Microbiol*. 2005;3:848–58.
114. Ding D, Qu X, Li L, Zhou X, Liu S, Lin S, et al. Involvement of histone methyltransferase GLP in HIV-1 latency through catalysis of H3K9 dimethylation. *Virology*. 2013;440:182–9.
115. Friedman J, Cho W-K, Chu CK, Keedy KS, Archin NM, Margolis DM, et al. Epigenetic silencing of HIV-1 by the histone H3 lysine 27 methyltransferase enhancer of Zeste 2. *J Virol*. 2011;85:9078–89.
116. Kauder SE, Bosque A, Lindqvist A, Planelles V, Verdin E. Epigenetic regulation of HIV-1 latency by cytosine methylation. *PLoS Pathog*. 2009;5:e1000495.
117. Blazkova J, Trejbalova K, Gondois-Rey F, Halfon P, Philibert P, Guiguen A, et al. CpG methylation controls reactivation of HIV from latency. *PLoS Pathog*. 2009;5:e1000554.
118. Churchill MJ, Cowley DJ, Wesselingh SL, Gorry PR, Gray LR. HIV-1 transcriptional regulation in the central nervous system and implications for HIV cure research. *J Neurovirol*. 2015;21:290–300.
119. Zadina JE, Nilges MR, Morgenweck J, Zhang X, Hackler L, Fasold MB. Endomorphin analog analgesics with reduced abuse liability, respiratory depression, motor impairment, tolerance, and glial activation relative to morphine. *Neuropharmacology*. 2016;105:215–27.
120. El-Hage N, Gurrwell JA, Singh IN, Knapp PE, Nath A, Hauser KF. Synergistic increases in intracellular Ca²⁺, and the release of MCP-1, RANTES, and IL-6 by astrocytes treated with opiates and HIV-1 Tat. *Glia*. 2005;50:91–106.
121. El-Hage N, Wu G, Wang J, Ambati J, Knapp PE, Reed JL, et al. HIV-1 Tat and opiate-induced changes in astrocytes promote chemotaxis of microglia through the expression of MCP-1 and alternative chemokines. *Glia*. 2006;53:132–46.
122. Hu S, Sheng WS, Lokensgard JR, Peterson PK. Morphine potentiates HIV-1 gp120-induced neuronal apoptosis. *J Infect Dis*. 2005;191:886–9.
123. Bruce-Keller AJ, Turchan-Cholewo J, Smart EJ, Geurin T, Chauhan A, Reid R, et al. Morphine causes rapid increases in glial activation and neuronal injury in the striatum of inducible HIV-1 Tat transgenic mice. *Glia*. 2008;56:1414–27.
124. Gurrwell JA, Nath A, Sun Q, Zhang J, Martin KM, Chen Y, et al. Synergistic neurotoxicity of opioids and human immunodeficiency virus-1 Tat protein in striatal neurons in vitro. *Neuroscience*. 2001;102:555–63.
125. Fitting S, Zou S, Chen W, Vo P, Hauser KF, Knapp PE. Regional heterogeneity and diversity in cytokine and chemokine production by astroglia: differential responses to HIV-1 Tat, gp120, and morphine revealed by multiplex analysis. *J Proteome Res*. 2010;9:1795–804.
126. Khurdayan VK, Buch S, El-Hage N, Lutz SE, Goebel SM, Singh IN, et al. Preferential vulnerability of astroglia and glial precursors to combined opioid and HIV-1 Tat exposure in vitro. *Eur J Neurosci*. 2004;19:3171–82.
127. El-Hage N, Bruce-Keller AJ, Yakovleva T, Bazov I, Bakalkin G, Knapp PE, et al. Morphine exacerbates HIV-1 Tat-induced cytokine production in astrocytes through convergent effects on [Ca²⁺]_i and NF-κB trafficking and transcription. *PLoS ONE*. 2008;3:e4093.
128. Turchan-Cholewo J, Dimayuga FO, Ding Q, Keller JN, Hauser KF, Knapp PE, et al. Cell-specific actions of HIV-Tat and morphine on opioid receptor expression in glia. *J Neurosci Res*. 2008;86:2100–10.
129. El-Hage N, Bruce-Keller AJ, Knapp PE, Hauser KF. CCL2/RANTES gene deletion attenuates opioid-induced increases in glial CCL2/MCP-1 immunoreactivity and activation in HIV-1 Tat-exposed mice. *J Neuroimmune Pharmacol*. 2008;3:275–85.
130. Turchan-Cholewo J, Dimayuga FO, Gupta S, Keller JN, Knapp PE, Hauser KF, et al. Morphine and HIV-Tat increase microglial-free radical production and oxidative stress: possible role in cytokine regulation. *J Neurochem*. 2009;108:202–15.
131. Dutta R, Roy S. Chronic morphine and HIV-1 Tat promote differential central nervous system trafficking of CD3+ and Ly6C+ immune cells in a murine *Streptococcus pneumoniae* infection model. *J Neuroinflammation*. 2015;12:120.
132. Coley JS, Calderon TM, Gaskill PJ, Eugenin EA, Berman JW. Dopamine increases CD14+CD16+ monocyte migration and adhesion in the context of substance abuse and HIV neuropathogenesis. *PLoS ONE*. 2015;10:e0117450.
133. Hauser KF, Knapp PE. Interactions of HIV and drugs of abuse: the importance of glia, neural progenitors, and host genetic factors. *Int Rev Neurobiol*. 2014;118:231–313.
134. Nam MH, Han KS, Lee J, Bae JY, An H, Park S, et al. Expression of μ-opioid receptor in CA1 hippocampal astrocytes. *Exp Neurobiol*. 2018;27:120–8.
135. Banerjee A, Li L, Pirrone V, Krebs FC, Wigdahl B, Nonnemacher MR. cAMP signaling enhances HIV-1 long terminal repeat (LTR)-directed transcription and viral replication in bone marrow progenitor cells. *Clin Med Insights Pathol*. 2017;10:1179555717694535.
136. Saunders A, Macosko EZ, Wysoker A, Goldman M, Krienen FM, de Rivera H, et al. Molecular diversity and specializations among the cells of the adult mouse brain. *Cell*. 2018;174:1015–30.e16.
137. Callaway EM, Dong H-W, Ecker JR, Hawrylycz MJ, Huang ZJ, Lein ES, et al. A multimodal cell census and atlas of the mammalian primary motor cortex. *Nature*. 2021;598:86.
138. Mukamel EA, Ngai J. Perspectives on defining cell types in the brain. *Curr Opin Neurobiol*. 2019;56:61–68.
139. Mathys H, Davila-Velderrain J, Peng Z, Gao F, Mohammadi S, Young JZ, et al. Single-cell transcriptomic analysis of Alzheimer's disease. *Nature*. 2019;570:332–7.
140. Velmeshov D, Schirmer L, Jung D, Haeussler M, Perez Y, Mayer S, et al. Single-cell genomics identifies cell type-specific molecular changes in autism. *Science*. 2019;364:685–9.
141. Brenner E, Tiwari GR, Kapoor M, Liu Y, Brock A, Mayfield RD. Single cell transcriptome profiling of the human alcohol-dependent brain. *Hum Mol Genet*. 2020;29:1144–53.
142. Yao Z, Liu H, Xie F, Fischer S, Adkins RS, Aldridge AI, et al. A transcriptomic and epigenomic cell atlas of the mouse primary motor cortex. *Nature*. 2021;598:103.
143. Boldog E, Bakken TE, Hodge RD, Novotny M, Aevermann BD, Baka J, et al. Transcriptomic and morphophysiological evidence for a specialized human cortical GABAergic cell type. *Nat Neurosci*. 2018;21:1185–95.
144. Habib N, Li Y, Heidenreich M, Swiech L, Avraham-Davidi I, Trombetta JJ, et al. Div-Seq: Single-nucleus RNA-Seq reveals dynamics of rare adult newborn neurons. *Science*. 2016;353:925–8.
145. Habib N, Avraham-Davidi I, Basu A, Burks T, Shekhar K, Hofree M, et al. Massively parallel single-nucleus RNA-seq with DroNc-seq. *Nat Methods*. 2017;14:955–8.
146. Lake BB, Ai R, Kaeser GE, Salathia NS, Yung YC, Liu R, et al. Neuronal subtypes and diversity revealed by single-nucleus RNA sequencing of the human brain. *Science*. 2016;352:1586–90.
147. Nguyen AT, Wang K, Hu G, Wang X, Miao Z, Azevedo JA, et al. APOE and TREM2 regulate amyloid-responsive microglia in Alzheimer's disease. *Acta Neuropathol*. 2020;140:477–93.
148. Slyper M, Porter CBM, Ashenberg O, Waldman J, Drokhlyansky E, Wakiro I, et al. A single-cell and single-nucleus RNA-Seq toolbox for fresh and frozen human tumors. *Nat Med*. 2020;26:792–802.
149. Tran MN, Maynard KR, Spangler A, Huuki LA, Montgomery KD, Sadashivaiah V, et al. Single-nucleus transcriptome analysis reveals cell-type-specific molecular signatures across reward circuitry in the human brain. *Neuron*. 2021;109:3088–3103.e5.
150. Stanley G, Gokce O, Malenka RC, Südhof TC, Quake SR. Continuous and discrete neuron types of the adult murine striatum. *Neuron*. 2020;105:688–699.e8.
151. O'leary TP, Sullivan KE, Wang L, Clements J, Lemire AL, Cembrowski MS. Extensive and spatially variable within-cell-type heterogeneity across the basolateral amygdala. *Elife*. 2020;9:1–27.
152. Chen R, Blosser TR, Djekidel MN, Hao J, Bhattacharjee A, Chen W, et al. Decoding molecular and cellular heterogeneity of mouse nucleus accumbens. *Nat Neurosci*. 2021;24:1757–71.
153. Luo C, Keown CL, Kurihara L, Zhou J, He Y, Li J, et al. Single-cell methylomes identify neuronal subtypes and regulatory elements in mammalian cortex. *Science*. 2017;357:600–4.
154. Liu H, Zhou J, Tian W, Luo C, Bartlett A, Aldridge A, et al. DNA methylation atlas of the mouse brain at single-cell resolution. *BioRxiv*. 2020. <https://doi.org/10.1101/2020.04.30.069377>.
155. Gokce O, Stanley GM, Treutlein B, Neff NF, Camp JG, Malenka RC, et al. Cellular Taxonomy of the Mouse Striatum as Revealed by Single-Cell RNA-Seq. *Cell Rep*. 2016;16:1126–37.
156. Phillips RA, Wan E, Tuscher JJ, Reid D, Drake OR, Ianov L, et al. Temporally specific gene expression and chromatin remodeling programs regulate a conserved Pdyn enhancer. *Elife*. 2023;12. <https://doi.org/10.1101/2023.06.02.543489>.
157. Bhatia P, Yang L, Luo JXJ, Xu M, Renthal W. Epigenomic profiling of mouse nucleus accumbens at single-cell resolution. *Mol Cell Neurosci*. 2023;126:103857.
158. He J, Kleyman M, Chen J, Alikaya A, Rothenhoefer KM, Ozturk BE, et al. Transcriptional and anatomical diversity of medium spiny neurons in the primate striatum. *Curr Biol*. 2021;31:5473–86.e6.
159. Matsushima A, Pineda SS, Crittenden JR, Lee H, Galani K, Mantero J, et al. Transcriptional vulnerabilities of striatal neurons in human and rodent models of Huntington's disease. *Nat Commun*. 2023;14:282.
160. Liu H, Zhou J, Tian W, Luo C, Bartlett A, Aldridge A, et al. DNA methylation atlas of the mouse brain at single-cell resolution. *Nature*. 2021;598:120–8.
161. Miller JA, Gouwens NW, Tasic B, Collman F, Tj Van Velthoven C, Bakken TE, et al. Common cell type nomenclature for the mammalian brain. *Elife*. 2017. <https://doi.org/10.7554/eLife.59928>.
162. Day JJ, Martinowich K. Single-cell transcriptional profiling in brain reward structures. *Neuropsychopharmacology*. 2023;48:243–4.

163. Yan Y, Herlihy B, Boyles S, Tao J, Hulme W, Roy S. Transcriptomic proofing of mouse amygdala during opioid dependence and withdrawal by single-cell RNA sequencing. 2022. 2022. <https://doi.org/10.21203/rs.3.rs-1299708/v1>.
164. Savell KE, Tuscher JJ, Zipperly ME, Duke CG, Phillips RA, Bauman AJ, et al. A dopamine-induced gene expression signature regulates neuronal function and cocaine response. *Sci Adv*. 2020;6:eaba4221.
165. Niu M, Morse B, Lamberty BG, Emanuel K, Yu F, León-Rivera R, et al. Methamphetamine increases the proportion of SIV-infected microglia/macrophages, alters metabolic pathways, and elevates cell death pathways: a single-cell analysis. *Viruses*. 2020;12:1297.
166. Phillips RA, Tuscher JJ, Fitzgerald ND, Wan E, Zipperly ME, Duke CG, et al. Distinct subpopulations of D1 medium spiny neurons exhibit unique transcriptional responsiveness to cocaine. *Mol Cell Neurosci*. 2023;125:103849.
167. Avey D, Sankararaman S, Yim AKY, Barve R, Milbrandt J, Mitra RD. Single-cell RNA-seq uncovers a robust transcriptional response to morphine by glia. *Cell Rep*. 2018;24:3619–3629.e4.
168. Karagiannis TT, Cleary JP, Gok B, Henderson AJ, Martin NG, Yajima M, et al. Single cell transcriptomics reveals opioid usage evokes widespread suppression of antiviral gene program. *Nat Commun*. 2020;11:2611.
169. Ho MF, Zhang C, Moon I, Zhu X, Coombes BJ, Biernacka J, et al. Single cell transcriptomics reveals distinct transcriptional responses to oxycodone and buprenorphine by iPSC-derived brain organoids from patients with opioid use disorder. *Mol Psychiatry*. 2022. <https://doi.org/10.1038/S41380-022-01837-8>.
170. Dang J, Tiwari SK, Agrawal K, Hui H, Qin Y, Rana TM. Glial cell diversity and methamphetamine-induced neuroinflammation in human cerebral organoids. *Mol Psychiatry*. 2021;26:1194–207.
171. Wei Y, Ho YC. Interferon opens up: HIV-induced inflammation reconfigures 3D chromatin conformation and affects where HIV integrates. *Mol Cell*. 2022;82:4585–7.
172. Schlachetzki JCM, Zhou Y, Glass CK. Human microglia phenotypes in the brain associated with HIV infection. *Curr Opin Neurobiol*. 2022;77:102637.
173. Farhadian SF, Lindenbaum O, Zhao J, Corley MJ, Im Y, Walsh H, et al. HIV viral transcription and immune perturbations in the CNS of people with HIV despite ART. *JCI Insight*. 2022;7:e160267.
174. Zheng J, Ru W, Adoloum JR, Spurgat MS, Liu X, Yuan S, et al. Single-cell RNA-seq analysis reveals compartment-specific heterogeneity and plasticity of microglia. *IScience*. 2021;24:102186.
175. Farhadian SF, Mehta SS, Zografou C, Robertson K, Price RW, Pappalardo J, et al. Single-cell RNA sequencing reveals microglia-like cells in cerebrospinal fluid during virologically suppressed HIV. *JCI Insight*. 2018;3:e121718.
176. Deak JD, Zhou H, Galimberti M, Levey DF, Wendt FR, Sanchez-Roige S, et al. Genome-wide association study in individuals of European and African ancestry and multi-trait analysis of opioid use disorder identifies 19 independent genome-wide significant risk loci. *Mol Psychiatry*. 2022;27:3970–9.
177. Zhou H, Sealock JM, Sanchez-Roige S, Clarke TK, Levey DF, Cheng Z, et al. Genome-wide meta-analysis of problematic alcohol use in 435,563 individuals yields insights into biology and relationships with other traits. *Nat Neurosci*. 2020;23:809–18.
178. Xu K, Li B, McGinnis KA, Vickers-Smith R, Dao C, Sun N, et al. Genome-wide association study of smoking trajectory and meta-analysis of smoking status in 842,000 individuals. *Nat Commun*. 2020;11:5302.
179. Vigorito M, Connaghan KP, Chang SL. The HIV-1 transgenic rat model of neuroHIV. *Brain Behav Immun*. 2015;48:336–49.
180. Gu CJ, Borjabad A, Hadas E, Kelschenbach J, Kim BH, Chao W, et al. EcoHIV infection of mice establishes latent viral reservoirs in T cells and active viral reservoirs in macrophages that are sufficient for induction of neurocognitive impairment. *PLoS Pathog*. 2018;14:e1007061.
181. Heithoff AJ, Totusek SA, Le D, Barwick L, Gensler G, Franklin DR, et al. The integrated National NeuroAIDS Tissue Consortium database: a rich platform for neuroHIV research. *Database*. 2019;2019. <https://doi.org/10.1093/database/bay134>.
182. Morgello S, Gelman BB, Kozłowski PB, Vinters HV, Masliah E, Cornford M, et al. The National NeuroAIDS Tissue Consortium: a new paradigm in brain banking with an emphasis on infectious disease. *Neuropathol Appl Neurobiol*. 2001;27:326–35.
183. Bakken TE, Jorstad NL, Hu Q, Lake BB, Tian W, Kalmbach BE, et al. Comparative cellular analysis of motor cortex in human, marmoset and mouse. *Nature*. 2021;598:111–9.
184. Crow M, Paul A, Ballouz S, Huang ZJ, Gillis J. Characterizing the replicability of cell types defined by single cell RNA-sequencing data using MetaNeighbor. *Nat Commun*. 2018;9:1–12.
185. Zhang M, Pan X, Jung W, Halpern AR, Eichhorn SW, Lei Z, et al. Molecularly defined and spatially resolved cell atlas of the whole mouse brain. *Nature*. 2023;624:343–54.
186. Langlieb J, Sachdev NS, Balderrama KS, Nadaf NM, Raj M, Murray E, et al. The molecular cytoarchitecture of the adult mouse brain. *Nature*. 2023;624:333–42.
187. Zhou J, Zhang Z, Wu M, Liu H, Pang Y, Bartlett A, et al. Brain-wide correspondence of neuronal epigenomics and distant projections. *Nature*. 2023;624:355–65.
188. Gabitto M, Travaglini K, Ariza J, Kaplan E, Long B, Rachleff V, et al. Integrated multimodal cell atlas of Alzheimer's disease. *Res Sq*. 2023. <https://doi.org/10.21203/RS.3.RS-2921860/V1>.
189. Mathys H, Peng Z, Boix CA, Victor MB, Leary N, Babu S, et al. Single-cell atlas reveals correlates of high cognitive function, dementia, and resilience to Alzheimer's disease pathology. *Cell*. 2023;186:4365–85.e27.
190. Ruzicka WB, Mohammadi S, Fullard JF, Davila-Velderrain J, Subburaju S, Reed Tso D, et al. Single-cell multi-cohort dissection of the schizophrenia transcriptome. 2022. <https://doi.org/10.1101/2022.08.31.22279406>.
191. Wamsley B, Bicks L, Cheng Y, Kawaguchi R, Quintero D, Grundman J, et al. Molecular cascades and cell-type specific signatures in ASD revealed by single cell genomics. *BioRxiv*. 2023. <https://doi.org/10.1101/2023.03.10.530869>.
192. Nagy C, Maitra M, Suderman M, Theroux J-F, Mechawar N, Ragoussis J, et al. Single-nucleus RNA sequencing shows convergent evidence from different cell types for altered synaptic plasticity in major depressive disorder. *BioRxiv*. 2018. <https://doi.org/10.1101/384479>.
193. Gandal M, Haney J, Parikshak N, Virpi L. Shared molecular neuropathology across major psychiatric disorders parallels polygenic overlap. *Science* (1979). 2018;359:693–7.
194. Nano PR, Fazzari E, Azizad D, Nguyen CV, Wang S, Kan RL, et al. A meta-atlas of the developing human cortex identifies modules driving cell subtype specification. *BioRxiv*. 2023. <https://doi.org/10.1101/2023.09.12.557406>.
195. Sonthalia S, Li G, Blanco XM, Casella A, Liu J, Stein-O'Brien G, et al. In silico transcriptome dissection of neocortical excitatory neurogenesis via joint matrix decomposition and transfer learning. <https://doi.org/10.1101/2024.02.26.581612>.
196. Wilkinson MD, Dumontier M, Aalbersberg IJ, Appleton G, Axton M, Baak A, et al. Comment: The FAIR Guiding Principles for scientific data management and stewardship. *Sci Data*. 2016;3:160018.
197. Ament SA, Adkins RS, Carter R, Chrysostomou E, Colantuoni C, Crabtree J, et al. The neuroscience multi-omic archive: a BRAIN initiative resource for single-cell transcriptomic and epigenomic data from the mammalian brain. *Nucleic Acids Res*. 2023;51:D1075–D1085.
198. Orvis J, Gottfried B, Kancherla J, Adkins RS, Song Y, Dror AA, et al. gEAR: Gene Expression Analysis Resource portal for community-driven, multi-omic data exploration. *Nature Methods*. 2021;18:843–4.

ACKNOWLEDGEMENTS

The SCORCH program is supported by grants and contracts from the National Institute on Drug Abuse: U01 DA053600 (S. Akbarian, S. Morgello), U01 DA051411 (C. Cheng), U01 DA056006 (C. Cheng, D. Moore, S. Spector), U01 DA053624 (H. Fox, S. Buch), U01 DA053628 (Y.-C. Ho, N. Sestan), U01 DA053631 (M. Kellis, M. Heiman), U01 DA053629 (P. Kenny, D. Volsky), U01 DA058527 (L. Ndhlovu, M. Corley, D. Williams), U01 DA053630 (T. Rana), U01 DA058402 (T. Rana, S. Buch), U01 DA056004 (P. Sanna), U01 DA051410 (S. Spudich, M. Gerstein, Y. Kluger), U01 DA053625 (H. Tilgner, L. Ndhlovu; T. Milner), U01 DA052244 (O. White), U01 DA056003 (H. Zeng, P. Kenny, D. Volsky). The views and opinions expressed in this manuscript are those of the authors only and do not necessarily represent the views, official policy or position of the U.S. Department of Health and Human Services or any of its affiliated institutions or agencies.

AUTHOR CONTRIBUTIONS

SAA, RRC, and MKL wrote the original draft. PPS, RRC, JPR, and SAA prepared the figures. All authors contributed to the conceptualization of the project and reviewed and edited the manuscript.

COMPETING INTERESTS

The authors declare no competing interests.

ADDITIONAL INFORMATION

Correspondence and requests for materials should be addressed to Seth A. Ament.

Reprints and permission information is available at <http://www.nature.com/reprints>

Publisher's note Springer Nature remains neutral with regard to jurisdictional claims in published maps and institutional affiliations.



Open Access This article is licensed under a Creative Commons Attribution 4.0 International License, which permits use, sharing, adaptation, distribution and reproduction in any medium or format, as long as you give appropriate credit to the original author(s) and the source, provide a link to the Creative Commons licence, and indicate if changes were made. The images or other third party material in this article are included in the article's Creative Commons licence, unless indicated otherwise in a credit line to the material. If material is not included in the article's Creative Commons licence and your intended use is not permitted by statutory regulation or exceeds the permitted use, you will need to obtain permission directly from the copyright holder. To view a copy of this licence, visit <http://creativecommons.org/licenses/by/4.0/>.

© The Author(s) 2024