








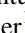
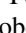


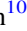





High-resolution, High-sensitivity, Low-frequency uGMRT View of Coma Cluster of Galaxies

D. V. Lal¹ , N. Lyskova^{2,3} , C. Zhang⁴ , T. Venturi⁵ , W. R. Forman⁶ , C. Jones⁶ , E. M. Churazov^{2,7} , R. J. van Weeren⁸ , A. Bonafede^{5,9,10} , N. A. Miller¹¹ , I. D. Roberts⁸ , A. M. Bykov¹² , L. Di Mascolo¹³ , M. Brügger¹⁰ , and G. Brunetti⁵ 

¹ Tata Institute of Fundamental Research, Post Box 3, Ganeshkhind P.O., Pune 411007, India; dharam@ncra.tifr.res.in

² Space Research Institute (IKI), Profsoyuznaya 84/32, Moscow 117997, Russia

³ ASC of P.N. Lebedev Physical Institute, Leninskiy prospect 53, Moscow 119991, Russia

⁴ Department of Astronomy and Astrophysics, The University of Chicago, Chicago, IL 60637, USA

⁵ INAF—Istituto di Radioastronomia, via Gobetti 101, I-40129 Bologna, Italy

⁶ Harvard-Smithsonian Center for Astrophysics, 60 Garden Street, Cambridge, MA 02138, USA

⁷ Max-Planck-Institut für Astrophysik, Karl-Schwarzschild-Strasse 1, D-85741 Garching, Germany

⁸ Leiden Observatory, Leiden University, PO Box 9513, 2300 RA Leiden, The Netherlands

⁹ DIFA—Università di Bologna, via Gobetti 93/2, I-40129 Bologna, Italy

¹⁰ Universität Hamburg, Hamburger Sternwarte, Gojenbergsweg 112, D-21029, Hamburg, Germany

¹¹ Stevenson University, Department of Mathematics and Physics, 1525 Greenspring Valley Road, Stevenson, MD 21153, USA

¹² Ioffe Institute, Politekhnicheskaya Strasse 26, Saint Petersburg 194021, Russia

¹³ Dipartimento di Fisica dell'Università di Trieste, Sezione di Astronomia, via Tiepolo 11, I-34131 Trieste, Italy

Received 2022 April 2; revised 2022 June 17; accepted 2022 June 18; published 2022 August 4

Abstract

We present high-resolution, high-sensitivity upgraded Giant Metrewave Radio Telescope observations of the Coma cluster (A1656) at 250–500 MHz and 550–850 MHz. At 250–500 MHz, 135 sources have extensions $>0'.45$ (with peak-to-local-noise ratio >4). Of these, 24 sources are associated with Coma-member galaxies. In addition, we supplement this sample of 24 galaxies with 20 ram pressure stripped (RPS) galaxies from (Chen et al. 2020, eight are included in the original extended radio source sample) and an additional five are detected and extended. We present radio morphologies, radio spectra, spectral index maps, and equipartition properties for these two samples. In general, we find the equipartition properties lie within a narrow range (e.g., $P_{\min} = 1\text{--}3 \times 10^{-13}$ dynes cm^{-2}). Only NGC 4874, one of the two brightest central Coma cluster galaxies, has a central energy density and pressure about five times higher and a radio source age about 50% lower than that of the other Coma galaxies. We find a diffuse tail of radio emission trailing the dominant galaxy of the merging NGC 4839 group that coincides with the *slingshot* tail seen in X-rays. The southwestern radio relic, B1253+275, has a large extent $\approx 32' \times 10'$ ($\approx 1.08 \times 0.34$ Mpc²). For NGC 4789, whose long radio tails merge into the relic and may be a source of its relativistic seed electrons, we find a transverse radio spectral gradient, a steepening from southwest to northeast across the width of the radio source. Finally, radio morphologies of the extended and RPS samples suggest that these galaxies are on their first infall into Coma on (predominantly) radial orbits.

Unified Astronomy Thesaurus concepts: Coma Cluster (270); Astrophysical black holes (98); Galaxy clusters (584); High energy astrophysics (739); Intracluster medium (858); Radio continuum emission (1340); Radio galaxies (1343); Supermassive black holes (1663); Tailed radio galaxies (1682); X-ray active galactic nuclei (2035)

1. Introduction

The rich galaxy cluster Abell 1656 (A1656; Abell 1958; Abell et al. 1989) in the constellation Coma Berenices is one of a trio (with the Perseus and Virgo clusters) of the most intensively studied clusters. Coma is nearby ($z = 0.0232$; Wegner et al. 1999), massive ($6 \times 10^{14} M_{\odot}$; Planck Collaboration et al. 2013), regular, dominated by E and S0 galaxies, and lies near the Galactic pole ($b^{\text{II}} = 88^{\circ}$), away from any significant obscuration, which makes it an ideal target across the wavelength band. Unlike the other members of the cluster trio, Coma appears relatively spherical, and therefore, more amenable to many types of studies that have dramatically advanced our understanding (e.g., Zwicky 1933). The concentration of nebulae in Coma was first noted by Herschel (1785). The first ADS listing for Coma is

the study of Curtis (1918), who remarked that the region “contains the most remarkable aggregation of closely packed small nebulae”. Over the past 100 yr, Coma has been observed by nearly every major telescope across the electromagnetic spectrum, and it is now considered a cluster where merging processes are currently taking place (see Churazov et al. 2021, for a recent overview). Among the newest probes of the Coma cluster are those from the Fermi-LAT. Based on 12 yr of Fermi-LAT data, Adam et al. (2021) and Baghmanyan et al. (2022) have recently reported emission at γ -ray energies from the direction of the Coma cluster. This emission could arise from interactions of the thermal gas with relativistic protons. Models of cosmic-ray acceleration by multiple large-scale shocks, which heat the intracluster gas (see also Bykov et al. 2019, for review), predict cosmic-ray proton distribution power-law indices consistent with the reported values. While secondary leptons produced by cosmic-ray protons may produce radio synchrotron emission, their contribution and the relative contribution of point sources to this emission is an open issue (see also Brunetti &

Table 1
Summary of Recent Wide-area Radio Observations of the Coma Cluster

Frequency	Area (deg ²)	Resolution ($''$)	Sensitivity (μ Jy beam ⁻¹)
(1)	(2)	(3)	(4)
JVLA			
2051–3947 MHz ^a	~0.2	15.1	151
1400 MHz ^b	~0.5	4.4	22
uGMRT			
250–500 MHz	~4.0	6.0	31.1
550–850 MHz	~3.8	3.5	16.4
Lofar			
144 MHz ^c	~25	20	150

Note. See also Section 1 for more details. The uGMRT observations are presented in this paper.

References.

^a Ozawa et al. (2015).

^b Miller et al. (2009).

^c Bonafede et al. (2022).

Lazarian 2011, 2016; Pinzke et al. 2017, for a detailed discussion).

Previous radio continuum studies of Coma were both pioneering, uncovering new phenomena, and very comprehensive (see Table 1 for a summary of previous large-area surveys that are most recent and comparable to our uGMRT data presented here). Coma is the first cluster where diffuse steep spectrum megaparsec-scale low-surface brightness emission in the form of a radio halo and a relic was discovered (Willson 1970); (see also Brunetti & Jones 2014; van Weeren et al. 2019, for recent reviews on this topic). It is also the first cluster, where a bridge of emission connecting the halo and the relic was found (Kim et al. 1989). Both the radio halo and relic have been extensively studied with all radio interferometers (i.e., Venturi et al. 1990; Giovannini et al. 1991, 1993; Brown & Rudnick 2011; Bonafede et al. 2021) and are considered the prototypes for these classes of cluster radio sources. Coma further hosts a number of head-tail and wide-angle-tail radio galaxies (see Feretti & Venturi 2002), which have been studied in the context of the interaction between the radio-emitting plasma of the jets and lobes and the surrounding environment (i.e., Venturi et al. 1989; Feretti et al. 1990; Kim et al. 1994; Lal 2020a, 2020b). Finally, radio continuum tails of ram pressure stripping origin have been recently reported for a number of late-type galaxies (Miller et al. 2009; Chen et al. 2020; Roberts et al. 2021).

In this work, we present observations of the Coma cluster at low frequencies obtained with the upgraded Giant Metrewave Radio Telescope (uGMRT; Swarup et al. 1991; Gupta et al. 2017). Our observations are made in the frequency bands 250–500 MHz and 550–850 MHz at angular resolutions of $\sim 6''$ and $\sim 3''$, respectively, and cover approximately ≈ 7.5 deg² using both new and archival pointings (see Table 2 and Figure 1). As Table 1 shows, the uGMRT survey we present has better sensitivity and angular resolution than the public LOFAR survey and better sensitivity, larger solid angle, and better resolution than the JVLA Coma survey. For these reasons, we concentrate on the uGMRT data for this paper.

We have used the deepest radio images of the Coma cluster in the 250–500 MHz and 550–850 MHz bands to image the extended cluster radio galaxies and study, for the first time,

using a radio-selected sample, the connection between the orientation and intrinsic properties of the tails and the cluster environment, as did Roberts & Parker (2020) for an optically selected sample of ram pressure stripped (RPS) galaxies (see also Roberts et al. 2021, who studied a Sloan Digital Sky Survey (SDSS)-high star formation rate sample of *jellyfish* galaxies). As Table 1 shows, the uGMRT observations provide the highest sensitivity observations over a large field which themselves are adequate for our analysis. Future papers focusing on individual radio sources and structures will exploit radio observations at other wavelengths. In this paper, we investigate whether the extended radio galaxies in the cluster bear information on the cluster dynamics and accretion processes that are taking place, making use of head-tail and wide-angle-tail radio sources, associated with elliptical galaxies and RPS sources, associated with late-type galaxies. To this aim, we use both the radio continuum images as well as spectral imaging in the frequency range covered by our observations.

The paper is organized as follows: Our data are summarized in Section 2. Section 3 discusses our 24 extended radio sources and 20 RPS galaxies that are associated with the Coma cluster. We present the analyses of our data, i.e., radio morphologies and spectral structure in Section 4.1 and in Section 4.1.1 for extended radio sources, and in Section 4.2 and Section 4.2.1 for RPS galaxies, respectively. Descriptions of the radio morphologies and optical properties of these extended sources, along with notes from the literature, are given in Appendices A.1 and A.2. We also provide notes on the spectral structure of four large angular-sized sources in Appendix A.1.1. In Section 5, we examine the nature of radio morphologies of cluster-member galaxies, including equipartition parameters and radiative ages of all extended and detected RPS galaxies (Section 5.2), their relative motions with respect to the cluster center (Section 5.3), and their X-ray properties (Section 5.4). Section 6 summarizes our conclusions.

Throughout this paper, we adopt a Λ cold dark matter cosmology with $H_0 = 70$ km s⁻¹ Mpc⁻¹, $\Omega_m = 0.27$, and $\Omega_\Lambda = 0.73$. At the mean redshift of the Coma cluster, $z = 0.02316$, $1''$ corresponds to 467 pc at the luminosity distance of 100.7 Mpc. We define the spectral index, α , as $S_\nu \propto \nu^\alpha$, where S_ν is the flux density at frequency, ν . Throughout, positions are given in J2000 coordinates.

2. Observations and Data Reduction

2.1. Radio Data

The GMRT (Swarup et al. 1991) has been upgraded with a completely new set of receivers at frequencies < 1.5 GHz. The uGMRT has (nearly) seamless frequency coverage in the 0.050–1.50 GHz range (Gupta et al. 2017). The data reported here include archival data (Obs_IDs: DDT-ddtb270 and 35_005) and new observations (Obs_ID 36_033) detailed in the observation log (Table 2). As far as possible, two pointings were observed alternately for one observing run, each integration lasting ~ 20 minutes. Before and after two scans, corresponding to two pointings, a calibration source, 3C 286 was observed for ~ 5 minutes. In this way, a fairly regular and complete sampling of the (u, v) plane was obtained.

Both the archival and new uGMRT data were analyzed in AIPS and CASA, using standard imaging procedures (see also

Table 2
The uGMRT Observations

Field	Obs_ID	Obs. Date	ν (MHz)	$\Delta\nu$ (MHz)	Ch./Ch.-width (no. / kHz)	t_{int} (hr)	FWHM ($'' \times ''$, $^\circ$)	RMS ($\mu\text{Jy beam}^{-1}$)
(1)	(2)	(3)	(4)	(5)	(6)	(7)	(8)	(9)
250–500 MHz								
Coma C	ddtB270	2017-04-28	400	200	4096/48.8	1.8	6.65×5.90 , 76.39	21.1
NGC 4839	36_033	2019-05-12	400	200	8192/24.4	3.9	6.31×5.73 , 50.61	31.1
NGC 4789	36_033	2019-05-23	400	200	8192/24.4	4.7	6.51×5.66 , 41.27	36.1
550–850 MHz								
NGC 4839	36_033	2019-06-14	700	300	8192/48.8	3.4	4.21×3.30 , 71.82	19.8
NGC 4789	36_033	2019-06-14	700	300	8192/48.8	3.0	4.04×3.35 , 64.58	15.5
B1253+275-N	36_033	2019-06-13	700	300	8192/48.8	2.3	3.89×3.58 , 37.69	42.4
B1253+275-S	36_033	2019-05-31	700	300	8192/48.8	1.8	4.45×3.44 , 45.55	13.7
B1253+275-NW	36_033	2019-05-31	700	300	8192/48.8	1.7	4.30×3.42 , 44.01	18.6
B1253+275-SE	36_033	2019-06-13	700	300	8192/48.8	1.8	3.96×3.44 , 66.10	16.5
Coma H	35_005	2018-01-01	700	300	2048/195.3	2.2	3.74×3.16 , 44.79	12.8
Coma L	35_005	2018-01-01	700	300	2048/195.3	1.3	3.69×3.08 , 40.73	16.4

Note. Column 8: the position angle (P.A.) is measured from the north and counterclockwise. Column 9: RMS noise at the half power point; see also Section 2.1 and Lal (2020a) for a discussion.

Lal 2020a, for a complete and detailed description of the data reduction methodology). Briefly, after bad data were edited, phases and amplitudes were calibrated using the calibration source observations. The flux density calibrator, 3C 286 was used as the secondary phase calibrator during the observations. We used the calibration source to correct for the bandpass shape and to set the flux density scale (Perley & Butler 2017). Bad data and data affected due to RFI were identified and flagged. After the initial calibration, the 200 MHz wide data of the 250–500 MHz band and the 300 MHz wide data of the 550–850 MHz band were split into five 40 MHz and six 50 MHz sub-bands, respectively. For each pointing, a region of size $\approx 3^\circ \times 3^\circ$ and $\approx 1.8^\circ \times 1.8^\circ$ was imaged, at 250–500 MHz and 550–850 MHz, respectively, extending far beyond the null of the GMRT primary beam. In addition to the standard self-calibration procedure, the method of *peeling* was also performed, in AIPS, on each sub-band to correct for direction-dependent errors. The calibrated data for five 40 MHz and six 50 MHz sub-bands were further stitched to form full 200 and 300 MHz calibrated visibility data at the two uGMRT bands, 250–500 MHz and 550–850 MHz, respectively. Next, these combined visibilities were imaged using TCLEAN in CASA. We used 3D imaging (gridder = “widefield”), two Taylor coefficients (nterms = 2), and Briggs weighting (robust = 0.5) in TCLEAN to ensure image fidelity over the full field of view and wide band. A final amplitude and phase self-calibration with a solution interval equal to the length of observation was then applied, and the two polarizations, RR and LL, were combined to obtain the final image. The final image was corrected for the primary beam shape of the GMRT antennas. The uncertainty in the estimated flux density, both due to calibration and due to systematics is $\lesssim 5\%$ (see also Lal 2020a).

These final images have a noise level (from a portion of an image at the half power points) of 21.1–36.6 $\mu\text{Jy beam}^{-1}$ and 12.8–42.4 $\mu\text{Jy beam}^{-1}$ at the angular resolutions of $\sim 6''$ and $\sim 3''$ in the 250–500 MHz and 550–850 MHz bands, respectively (see Table 2). These are the deepest images so far reported at these bands covering a total area of $\sim 4 \text{ deg}^2$, despite the modest integration time (≈ 2.5 hr on sky for a typical pointing). The (conservative) uncertainty in the

estimated flux density, both due to calibration and due to systematics, is $\lesssim 4\%$ at both 250–500 MHz and 550–850 MHz bands. The RMS noise is a factor of ≈ 2 and 3 higher close to the dominant radio sources, NGC 4874 (one of the two core BCGs) and Coma A, respectively. Based on the range for the brightest pixels (in the three 250–500 MHz band pointings and the eight 550–850 MHz band pointings), i.e., 0.71–0.61 Jy beam $^{-1}$ and 0.23–0.02 Jy beam $^{-1}$, we reach dynamic ranges of $\sim 20,000:1$ – $29,000:1$ and $\sim 5500:1$ – $15,700:1$ in the 250–500 MHz and 550–850 MHz bands, respectively, considering that a pointing contained the very bright Coma A radio source. The three corrected primary beam pointings at 250–500 MHz band were knitted together and are presented in Figure 1. Also shown are eight circles that correspond to the eight pointings at 550–850 MHz. Note that the two mosaics were not affected by an offset with respect to the phase center, since the images revealed (i) no systematic differences besides typical differences in flux density calibration, and (ii) no positional offsets that are larger than the size of a pixel ($\approx 0''.05$ and $\approx 0''.03$ at 250–500 MHz and 550–850 MHz bands, respectively).

2.2. X-Ray Data

The Coma cluster has been observed multiple times with Chandra and XMM-Newton. Lyskova et al. (2019) presented an analysis of XMM-Newton data from the EPIC/MOS detector, covering a field of more than 1 deg^2 (see Figure 2). The data were analyzed by removing background flares using the light curve of the detected events and renormalizing the *blank fields* background to match the observed count rate in the 11–12 keV band (shown in Figure 2, Churazov et al. 2003).

To investigate the interaction of the radio lobes of one of two core bright cluster galaxies (BCGs), NGC 4874 with its environment, we used Chandra observations (Obs_IDs 13993 13994, 13995, 13996, 14406, 14410, 14411, and 14415). These data were selected since they are nearly contemporaneous (within 1 month in 2012) and do not suffer from varying ACIS responses. The accumulated data is about 400 ks. The data were analyzed following the steps described in Vikhlinin et al. (2005), which include filtering of high background, use of the latest calibration corrections, and determination of the

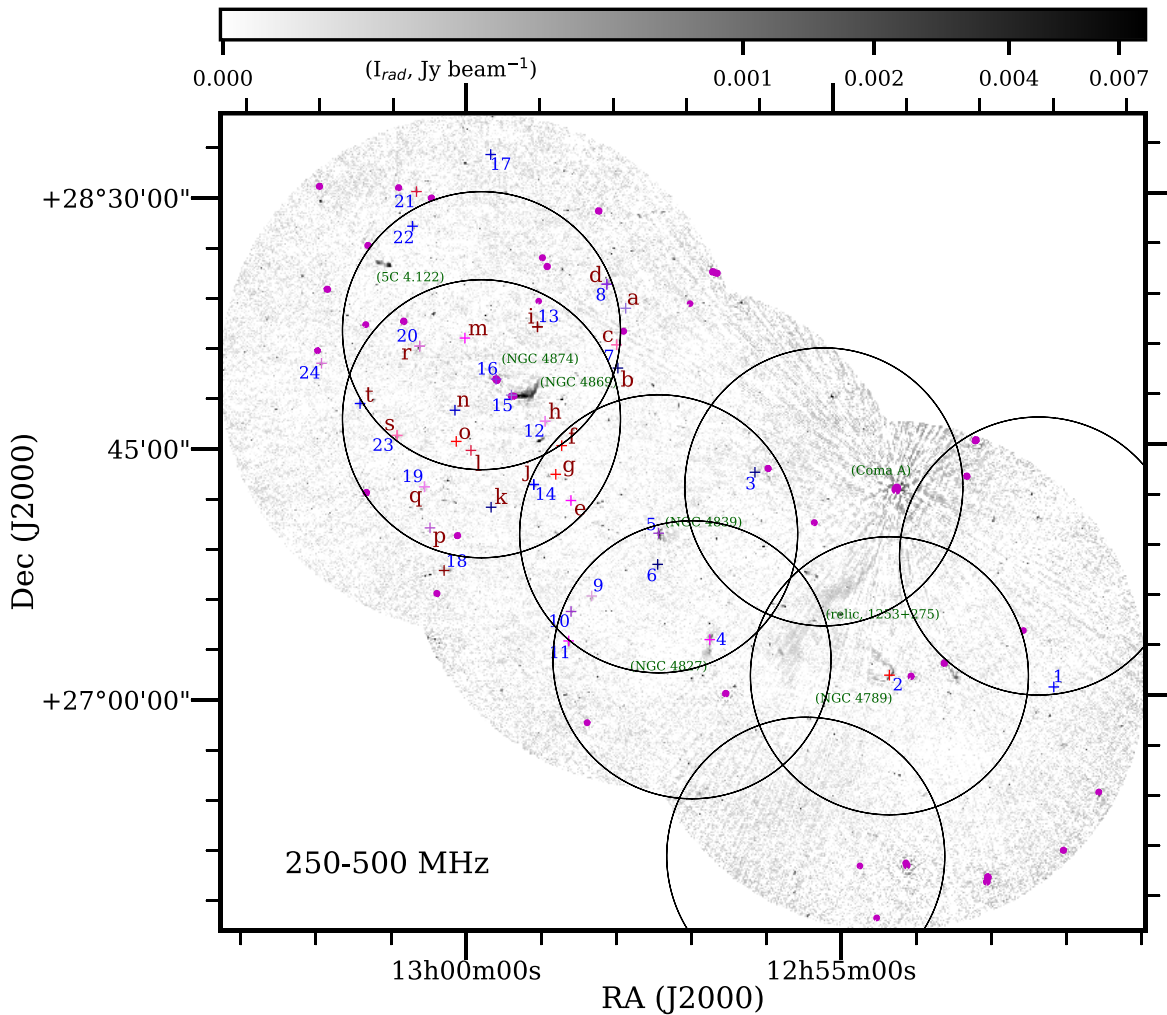


Figure 1. Mosaic image of three pointings (see Table 2) at an angular resolution of $\sim 6''$ in the uGMRT 250–500 MHz band. Source positions are marked by the “+” sign and color coded according to their redshifts, where blue marks the lowest redshift ($=0.01523$) galaxy, red marks the highest redshift ($=0.03707$) galaxy, and the intervening galaxies are marked with increasing gradient from smaller (blue) to higher (red; see also Figure 2). The source IDs are also labeled adjacent to their positions, extended sources (in blue) and the RPS galaxies (in dark-red) that are members of Coma are listed in Tables 3 and 4, respectively. The magenta points mark the peak positions of dominant (peak $S_{\nu} \gtrsim 30$ mJy beam $^{-1}$ at 250–500 MHz band) radio emission. The grayscale image is displayed in logarithmic scales to emphasize the extended, low-surface brightness diffuse radio emission and radio emission associated with the radio galaxies. The pointing containing Coma A has higher RMS noise (≈ 36 μ Jy beam $^{-1}$) than the other pointings (see Table 2 for RMS noise levels). Note the starry-pattern artifact centered on Coma A, limiting the dynamic range that could be achieved for the NGC 4789 data. Eight circles correspond to the eight pointings in the uGMRT 550–850 MHz band (see Table 2).

background for each observation. The image in the 0.5–4.0 keV band was generated along with the exposure and background maps (see Churazov et al. 2012, for details).

3. Extended Radio Sources and RPS Galaxies

The Coma cluster has been studied over the years, providing a vast amount of literature. Using an extensive survey, Huchra et al. (1990) and Kent & Gunn (1982) compiled a list of redshifts between blue band magnitude 10.94 and 21.63 in the Coma cluster and its surrounding environs to a radius of 6° from NGC 4874, one of the two core BCGs of the Coma cluster, for galaxies whose radial velocities are in the range between 4000 and 9400 km s $^{-1}$, considered to be associated with the Coma cluster. We have used this catalog to identify cluster-member galaxies.

A search of the 250–500 MHz image was made to find the position and flux densities of all strong (point and extended) sources. These were then *blanked* from the map to enable searches for weaker sources. Preliminary inspection suggests a

myriad (≈ 2000) of extended and point-like discrete radio sources is seen in the image, most of them being background active galactic nuclei (AGNs). The analysis of these detected (point and extended) sources will be undertaken as separate projects.

The definition and identification of multiple systems, e.g., double lobes, is a common problem in radio astronomy and is especially difficult for deep radio observations. We therefore looked at images to find all obvious faint and/or extended radio sources that are at least 4–5 beams across, i.e., sources showing projected radio extent $\gtrsim 0'.45$ (≈ 12.6 kpc) at the mean redshift of the Coma cluster down to a peak-to-local-noise ratio = 4 at an angular resolution of $\sim 6''$ in the 250–500 MHz band image. We have identified a total of 135 sources in the 250–500 MHz band. Of these, 31 sources were not covered in the 550–850 MHz band pointings. Furthermore, of the 135 extended radio sources, half ($\approx 55\%$) had redshift measurements (as reported in NED) and only 24 ($\approx 18\%$) are confirmed members of the Coma cluster. Note that we have not included the historical Coma A (3C 277.3, $z = 0.08536$) radio galaxy in

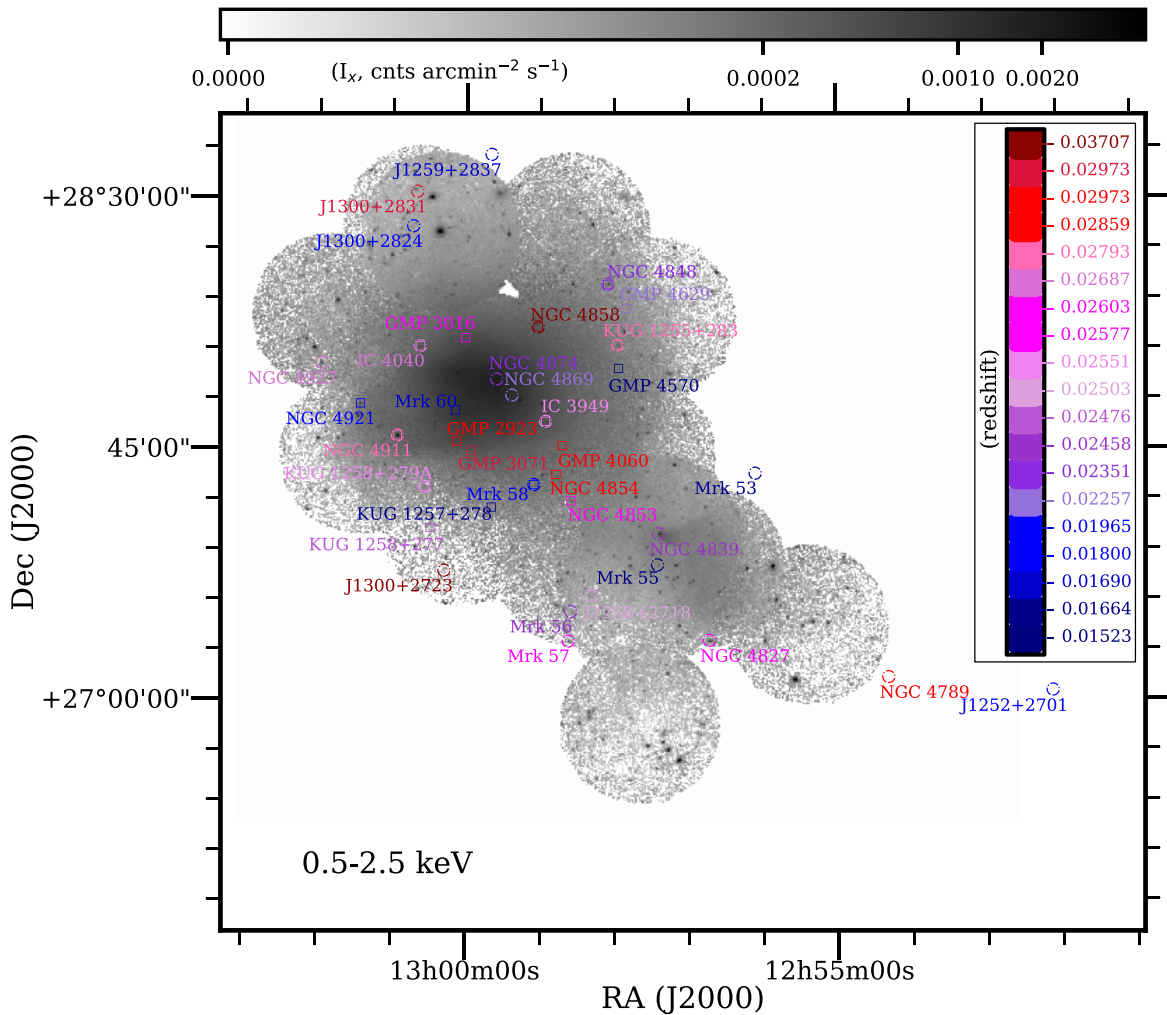


Figure 2. The background-subtracted, exposure-, and vignetting-corrected XMM-Newton image of the Coma cluster in the 0.5–2.5 keV energy band. The positions of the extended radio sources (Table 3) and the RPS galaxies (Table 4) are marked with circles and boxes, respectively. The source name and their positions are color coded according to redshifts, where blue marks the lowest redshift ($=0.01523$) galaxy, red marks the highest redshift ($=0.03707$) galaxy; the intervening galaxies are marked with increasing gradient from smaller (blue) to higher (red) as depicted in the inset redshift scale bar.

this list. The confirmed members of the Coma cluster have a redshift range from $z=0.0162$ (Mrk 55) to $z=0.02969$ (2MASX J13004067+2831116) around the mean Coma cluster redshift $z=0.02310$.

All 20 RPS galaxies selected by Chen et al. (2020) from the combined galaxy samples of Smith et al. (2010, UV trails), Yagi et al. (2010, 12 H α), Kenney et al. (2015), and Gavazzi (1989), that are confirmed members of the Coma cluster, are covered by our low-frequency radio observations. Eight of our extended radio sources are also galaxies with RPS tails of gas and embedded young stars (listed in both Tables 3 and 4). Of the remaining 12 RPS galaxies, five are detected and seven are undetected in our 250–500 MHz band. Similarly, in the 550–850 MHz band, of these same 12 RPS galaxies, three are detected and seven are undetected, and two are not covered in our 550–850 MHz pointings. These are listed together in Table 4.

Tables 3 and 4 list these 24 extended radio sources and 20 RPS galaxies, respectively, along with their source parameters. Since almost all the extended radio sources have complex morphologies, we simply integrated the signal within inter-actively defined boundaries and determined integrated flux densities. Figure 1 depicts the positions of the extended sources

and RPS galaxies, marked with “+” signs, and color coded accordingly to their redshifts (see Figure 2). The source IDs are also shown, (blue) numeric and (red) alphabetic characters for extended sources and RPS galaxies, respectively, adjacent to their positions. In Appendix B, we present the remaining 111 extended radio sources. Table A1 lists these 111 extended radio sources and Figure A1 depicts source IDs and positions (magenta “+” marks) that are either foreground/background galaxies or do not have redshift data. The radio images of these extended radio sources are presented in Figure A2, in the order listed in Table A1. Below we discuss, using our 250–500 MHz and 550–850 MHz band continuum (with deeper sensitivity) data on extended sources and RPS galaxies in the Coma cluster.

4. Results and Analysis

4.1. Radio Morphologies of Extended Sources

In Table 3, we list 24 extended ($\gtrsim 12.6$ kpc) radio sources that are confirmed members of the Coma cluster. Individual columns are source_ID, source position, spectroscopic redshift, RMS noise at 250–500 MHz and 550–850 MHz in the near vicinity of the source, integrated flux densities at 250–500 MHz

Table 3
Radio Properties of the 24 Extended Coma Cluster-member Sources Detected Using the uGMRT

Source_ID	Optical Position		z	RMS		$S_{400\text{ MHz}}$	$S_{700\text{ MHz}}$	$\alpha_{400\text{ MHz}}^{700\text{ MHz}}$	Radio Morphology
	R.A.	Decl.		B-3	B-4				
(1)	(J2000)		(4)	($\mu\text{Jy b}^{-1}$)		(mJy)		(9)	(10)
	(2)	(3)		(5)	(6)	(7)	(8)		
1 2MASX J12520684+2701352	12:52:06.84	+27:01:35.2	0.02135	12	24	3.3 ± 0.2	1.7 ± 0.1	-1.23 ± 0.13	A
2 NGC 4789	12:54:19.02	+27:04:04.9	0.02790	40	24	156.8 ± 1.2	119.5 ± 0.5	-0.49 ± 0.02	HT, NAT
3 Mrk 53	12:56:06.10	+27:40:41.2	0.01657	24	24	14.5 ± 0.4	9.5 ± 0.2	-0.75 ± 0.07	T
4 NGC 4827	12:56:43.52	+27:10:43.7	0.02545	24	18	132.9 ± 0.5	101.2 ± 0.3	-0.49 ± 0.01	CD, FR II
5 NGC 4839	12:57:24.35	+27:29:51.8	0.02456	36	18	196.9 ± 1.6	118.9 ± 1.0	-0.90 ± 0.02	HT, WAT, cD
6 Mrk 55	12:57:25.25	+27:24:16.5	0.01620	24	12	7.9 ± 0.5	5.2 ± 0.3	-0.78 ± 0.14	Tr
7 KUG 1255+283 ^a	12:57:57.75	+28:03:41.5	0.02768	24	18	17.3 ± 0.7	13.4 ± 0.4	-0.45 ± 0.08	T
8 NGC 4848 ^a	12:58:05.58	+28:14:33.3	0.02351	24	24	60.7 ± 2.1	43.4 ± 0.8	-0.60 ± 0.07	T
9 2MASX J12581865+2718387	12:58:18.62	+27:18:38.9	0.02484	24	18	10.7 ± 0.5	9.4 ± 0.2	-0.22 ± 0.10	T
10 Mrk 56	12:58:35.34	+27:15:52.9	0.02458	12	12	7.3 ± 0.3	7.8 ± 0.1	0.11 ± 0.08	T
11 Mrk 57	12:58:37.28	+27:10:35.8	0.02556	18	24	14.4 ± 0.4	8.9 ± 0.2	-0.86 ± 0.05	T
12 IC 3949 ^a	12:58:55.95	+27:50:00.4	0.02525	18	12	7.5 ± 0.3	5.3 ± 0.2	-0.61 ± 0.10	A, T
13 NGC 4858 ^a	12:59:02.07	+28:06:56.4	0.03141	36	12	22.1 ± 0.7	12.1 ± 0.5	-1.07 ± 0.10	T
14 Mrk 58 ^a	12:59:05.30	+27:38:39.9	0.01853	24	24	12.2 ± 0.6	7.9 ± 0.3	-0.76 ± 0.11	T
15 NGC 4869	12:59:23.33	+27:54:41.8	0.02288	72	36	1381.0 ± 9.7	735.9 ± 2.1	-1.12 ± 0.01	HT, NAT
16 NGC 4874	12:59:35.71	+27:57:33.8	0.02394	384	96	476.6 ± 2.3	305.0 ± 2.4	-0.80 ± 0.02	HT, NAT, cD
17 2MASX J12594009+2837507 ^b	12:59:40.10	+28:37:50.8	0.01787	12	...	4.5 ± 0.1	A
18 2MASX J13001780+2723152 ^b	13:00:17.81	+27:23:15.1	0.03707	24	...	16.3 ± 0.1	A, D
19 KUG 1258+279A ^a	13:00:33.73	+27:38:15.6	0.02494	24	12	10.5 ± 0.6	7.0 ± 0.2	-0.74 ± 0.11	T
20 IC 4040 ^a	13:00:37.86	+28:03:28.7	0.02615	24	12	53.3 ± 1.5	29.6 ± 0.3	-1.05 ± 0.05	T
21 2MASX J13004067+2831116 ^b	13:00:40.68	+28:31:11.6	0.02969	24	...	18.2 ± 0.5	T
22 2MASX J13004385+2824586	13:00:43.88	+28:24:58.8	0.02095	24	24	31.6 ± 0.6	16.4 ± 0.2	-1.17 ± 0.04	HT, WAT
23 NGC 4911 ^a	13:00:56.06	+27:47:27.2	0.02663	24	12	50.6 ± 1.0	29.2 ± 0.2	-0.98 ± 0.04	A
24 NGC 4927 ^b	13:01:57.59	+28:00:21.0	0.02590	18	...	9.9 ± 0.7	WAT

Notes. Column 1: source name as identified in NED.

^a RPS galaxies (see also Table 4 and Section 4.2).

^b Sources not covered in our 550–850 MHz band pointings.

Columns 2 and 3: the R.A. and decl. (J2000) of the optical host associated with the probable radio core in increasing R.A. Column 4: spectroscopic redshift. Columns 5 and 6: the local RMS noise (in microjansky per beam) near the source for 250–500 MHz (band 3) and 550–850 MHz (band 4). Columns 7 and 8: the flux densities of the RPS galaxies at 250–500 MHz (band 3) and 550–850 MHz (band 4) at angular resolutions of $\sim 6''$ and $\sim 3''$, respectively. Column 9: the spectral index at 250–500 MHz (band 3) and 550–850 MHz (band 4) at these angular resolutions (see also the discussion in Section 4.1.1). Column 10: the radio source morphology classification following Rudnick (2021): A = amorphous; HT = head tail; WAT = wide-angle tailed; T = tailed source; CD = classical double; FR II: FR type II source; cD = compact dominant; Tr: triple; NAT: narrow-angle tailed; and D: diffuse.

and 550–850 MHz, and the spectral index of the source using the 250–500 MHz and 550–850 MHz band flux densities. Uncertainties on the spectral index are determined using uncertainties on the flux calibrations ($\lesssim 4\%$, see also Section 2.1) and uncertainties on the flux densities, where the latter correspond to the RMS noise in the near vicinity of the source times the square root of the number of beams covering the source in each observing band. The source_IDs of the extended sources (in blue “+” marks) are labeled adjacent to their positions in Figure 1 listed in Table 3.

The radio images of these extended cluster-member radio sources are presented in Figure 3, in the order listed in Table 3. The source name, as tabulated in Table 3, is labeled in the lower-left corner of each image. The radio contours, in magenta and blue, correspond respectively to the 250–500 MHz and the 550–850 MHz band images that are overlaid on the grayscale SDSS (DR12) r -band image. Descriptions of the radio morphologies and their optical properties of these extended sources, along with notes from the literature, are given in Appendix A. To study the plasma properties of these extended sources, we also elaborate below on their radio morphologies (Appendix A.1) and spectral properties (Section A.1.1) at low frequencies. For RPS galaxies detected as extended sources,

their alphabetic designation (as in Table 4) is included along with the extended source serial number from Table 3 (see also Section 4.2).

4.1.1. Spectral Structure of Extended Sources

Twenty of 24 extended sources were also covered in the 550–850 MHz band pointings, which allows us to investigate the spectral index distribution of these sources. Therefore, the final calibrated (u, ν) -data at 550–850 MHz were mapped using a (u, ν) -taper of 0–36 k λ , which is similar to that of the 250–500 MHz data and then restored, using the restoring beam corresponding to the 250–500 MHz band image. We also made images at matched lower angular resolutions to emphasize low-surface brightness diffuse structures for both bands. The restored and matched images at the 250–500 MHz and 550–850 MHz bands were further used to construct spectral index images for 20 of the 24 extended radio sources. The standard direct method, i.e., the ratio of $\log [S_{400\text{ MHz}}(x, y)/S_{700\text{ MHz}}(x, y)]$ and $\log [400\text{ MHz}/700\text{ MHz}]$, where $S_{400\text{ MHz}}(x, y)$ and $S_{700\text{ MHz}}(x, y)$ are the images at two bands, 250–500 MHz and 550–850 MHz, respectively, was used to determine the spectral index distribution.

Figure 4 shows spectral index images for 20 of the 24 extended radio sources that are associated with the Coma

Table 4
A Summary of Radio Properties of the RPS Galaxies in the Coma Cluster Field Observed Using the uGMRT

Source_ID	Optical Position		Vel.	RMS		S_{400} MHz	S_{700} MHz	α_{400}^{700} MHz	$S_{1.4}$ GHz	Radio Morphology
	R.A.	Decl.		B-3	B-4					
	(J2000)			($\mu\text{Jy b}^{-1}$)		(mJy)			(mJy)	
(1)	(2)	(3)	(4)	(5)	(6)	(7)	(8)	(9)	(10)	(11)
(a) GMP 4629 ^b	12:57:50.27	28:10:13.7	6918	22	...	$\lesssim 0.80$	$\lesssim 0.33^{\Gamma}$...	0.03 ± 0.01	...
(b) GMP 4570 ^b	12:57:56.81	27:59:30.6	4565	18	...	1.04 ± 0.22	$\lesssim 0.60^{\Gamma}$	$\lesssim -0.98$	0.55 ± 0.06	T
(c) KUG 1255+283 ^a	12:57:57.75	28:03:41.5	8136	24	18	17.29 ± 0.69	13.43 ± 0.36	-0.45 ± 0.08	6.76 ± 0.08	T
(d) NGC 4848 ^a	12:58:05.58	28:14:33.3	7184	24	24	60.66 ± 2.12	43.41 ± 0.80	-0.60 ± 0.07	23.85 ± 0.11	T
(e) NGC 4853	12:58:35.20	27:35:47.1	7688	24	24	6.79 ± 0.41	4.43 ± 0.12	-0.77 ± 0.12	1.35 ± 0.15	A, T
(f) GMP 4060	12:58:42.60	27:45:38.0	8686	22	14	$\lesssim 0.40$	$\lesssim 0.31$...	<0.083	...
(g) NGC 4854	12:58:47.44	27:40:29.3	8383	22	12	$\lesssim 0.52$	$\lesssim 0.37$...	<0.098	...
(h) IC 3949 ^a	12:58:55.95	27:50:00.4	7526	18	12	7.48 ± 0.34	5.29 ± 0.19	-0.61 ± 0.10	2.37 ± 0.09	T
(i) NGC 4858 ^a	12:59:02.07	28:06:56.4	9416	36	12	22.11 ± 0.68	12.13 ± 0.48	-1.07 ± 0.10	8.73 ± 0.13	T
(j) Mrk 58 ^a	12:59:05.30	27:38:39.9	5419	24	24	12.15 ± 0.61	7.93 ± 0.27	-0.76 ± 0.11	3.29 ± 0.15	T
(k) KUG 1257+278	12:59:39.82	27:34:35.9	5011	12	18	2.28 ± 0.21	1.41 ± 0.19	-0.86 ± 0.29	0.51 ± 0.07	T
(l) GMP 3071	12:59:56.15	27:44:47.3	8920	22	14	$\lesssim 0.24$	$\lesssim 0.11$...	0.05 ± 0.02	...
(m) GMP3016	13:00:01.08	28:04:56.2	7765	22	12	$\lesssim 0.29$	$\lesssim 0.23$...	<0.043	...
(n) GMP 2923	13:00:08.07	27:46:24.0	8672	22	14	$\lesssim 0.30$	$\lesssim 0.21$...	<0.034	...
(o) Mrk 60	13:00:09.14	27:51:59.3	5316	24	12	2.29 ± 0.52	1.36 ± 0.18	-0.93 ± 0.46	1.12 ± 0.03	A, T
(p) KUG 1258+277	13:00:29.23	27:30:53.7	7395	22	12	$\lesssim 0.19$	$\lesssim 0.12$...	<0.094	...
(q) KUG 1258+279A ^a	13:00:33.73	27:38:15.6	7485	24	12	10.52 ± 0.56	6.96 ± 0.20	-0.74 ± 0.11	3.70 ± 0.09	T
(r) IC 4040 ^a	13:00:37.86	28:03:28.7	7675	24	13	53.33 ± 1.51	29.62 ± 0.26	-1.05 ± 0.05	16.31 ± 0.10	T
(s) NGC 4911 ^a	13:00:56.06	27:47:27.2	7985	24	12	50.58 ± 0.99	29.24 ± 0.16	-0.98 ± 0.04	15.08 ± 0.23	A
(t) NGC 4921	13:01:26.15	27:53:09.5	5470	32	12	1.89 ± 0.48	$\lesssim 0.65$	$\lesssim -2.05$	0.44 ± 0.05	A

Notes. Column 1: source name as identified in NED.

^a Extended radio source (see Table 3 and Section 4.2 for a discussion).

^b Sources not covered in our 550–850 MHz band pointings.

Columns 2 and 3: the R.A. and decl. (J2000) of the optical host, in increasing R.A. Column 4: optical velocity from Chen et al. (2020). Columns 5 and 6: the local RMS noise (in microjansky per beam) in the near vicinity of the source for 250–500 MHz (band 3) and 550–850 MHz (band 4) images. Columns 7 and 8: the flux densities of the RPS galaxy at 250–500 MHz (band 3) and 550–850 MHz (band 4) at angular resolutions of $\sim 6''$ and $\sim 3''$, respectively. An upper limit of five times the local RMS is quoted for non-detected RPS galaxies; Γ : measurements (upper limits) are from the nearest locations covered in our 250–500 MHz band pointings. Column 9: the spectral index at 250–500 MHz (band 3) and 550–850 MHz (band 4) of the source at these angular resolutions. Column 10: the flux densities of the RPS galaxy at 1.4 GHz; L: taken from Chen et al. (2020). Column 11: The radio source morphology classification following Rudnick 2021, see also Table 3).

cluster (in the order presented in Table 3). The source_ID, as tabulated in Table 3, is labeled in the lower-left corner of each image. All tailed radio sources are characterized by elongated morphologies found in both bands of the uGMRT. As usual, sources that have a high brightness head close to the optical galaxy and a narrow low brightness tail show spectral structure that gradually steepens from the flat spectrum head with increasing distance from the head along the tail. The prevalence of flat spectrum radio cores in almost all extended radio sources implies that they may still be active. These spectral trends are rather similar when the uncertainties are taken into account for the majority of the extended radio sources shown in Figure 4.

The projected source size at lower frequencies, 250–500 MHz, is larger than the source size at higher frequencies, the 550–850 MHz band, for all extended sources presented here, probably due to synchrotron aging. Note that the integrated flux densities given in Table 3 for the 250–500 MHz and 550–850 MHz band images are at angular resolutions of $\sim 6''$ and $\sim 3''$, respectively. These measurements would neither affect the small angular-sized radio sources nor affect the sources showing large angular extent that have associated low-surface brightness diffuse radio emission, namely, NGC 4789 and the associated relic radio source, 1253+275 in our case, and NGC 4869. This is because our observations are full synthesis observing runs at both bands, along with their large fractional bandwidths, which result in good (u , v)-coverage at the short as well as the long spacings that are critical to map $\approx 10'$ -sized

structures. The spectral structure of the large ($\gtrsim 1'.85$) angular-sized sources, namely, NGC 4789, NGC 4827, NGC 4839, NGC 4869, and 2MASX J13004385+2824586 are elaborated further in Appendix A.1.1.

4.2. Radio Morphologies of RPS Galaxies

Eight of our extended radio sources are also galaxies with RPS tails of gas and embedded young stars. Below, we discuss using our 250–500 MHz and 550–850 MHz band continuum (with deeper sensitivity) data, the RPS galaxies in the Coma cluster. Their radio properties, measured from our data along with measurements at 1.4 GHz (Chen et al. 2020), are listed in Table 4, and Figure 1 depicts source_IDs (alphabetic characters) and positions (“+” marks). As mentioned in Section 3, the radio emission associated with the ultra-diffuse galaxies that is found in our data will be undertaken as a separate study.

RPS galaxies are characterized by gas being stripped, from the affected galaxy, by the intracluster medium (ICM). This ram pressure, especially at the early interaction stage with compression of the interstellar medium (ISM), can trigger star formation. Subsequently, as the cold ISM is depleted, the star formation is quenched (e.g., Gunn & Gott 1972; Nulsen 1982; Koopmann & Kenney 2004; Cowl et al. 2005; Boselli et al. 2016). Thus, ram pressure stripping is an important process affecting galaxy evolution in rich environments.

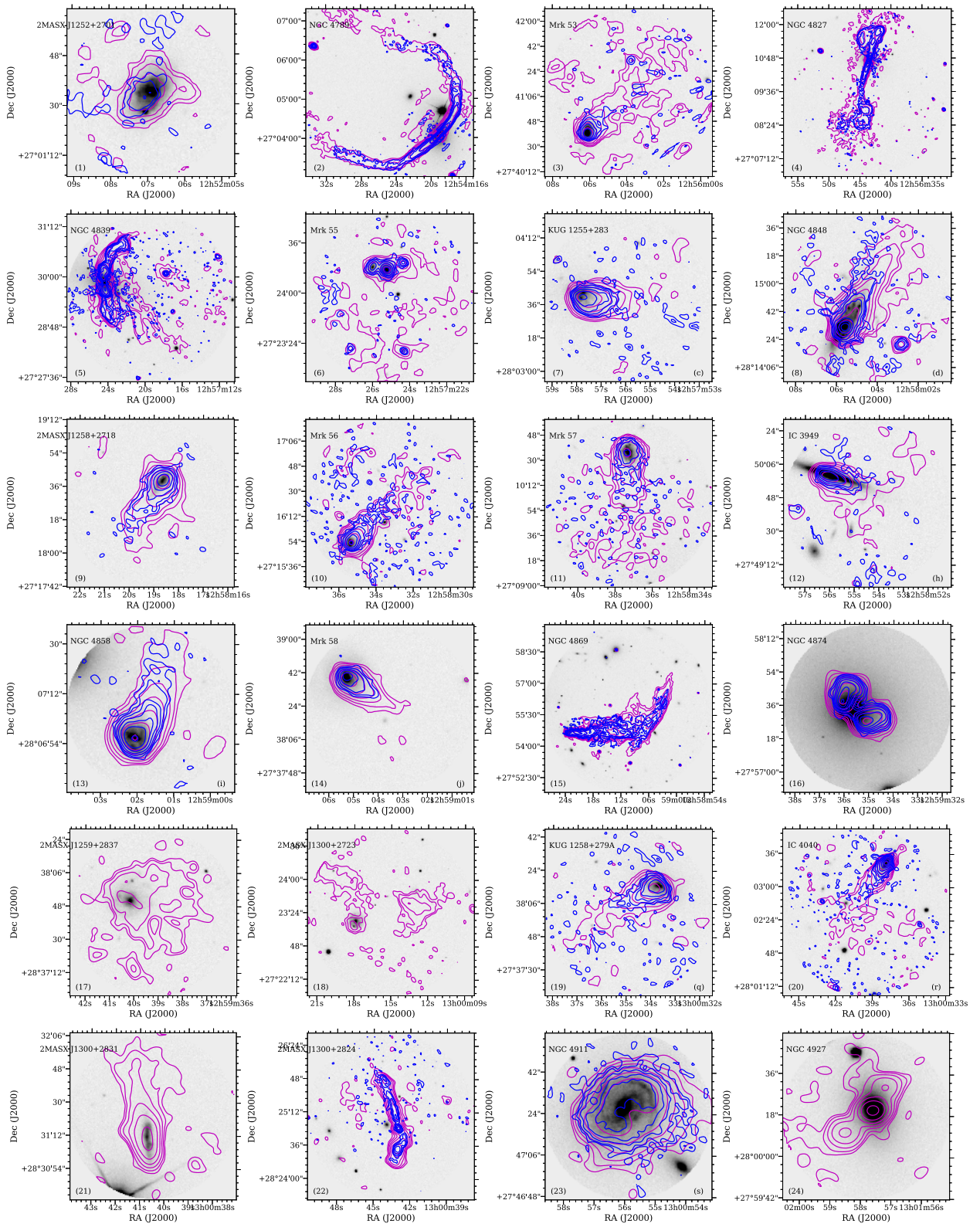


Figure 3. Images of extended (≥ 12.6 kpc) confirmed Coma cluster-member radio sources. These radio sources are in the order presented in Table 3, from left to right and top to bottom. The source_ID, as tabulated in Table 3, is labeled in the lower-left corner of each image. The label at the lower-right corner of each image is the source_ID for (eight) RPS galaxies as tabulated in Table 4. The magenta and blue radio contours correspond to 250–500 MHz (band 3) and 550–850 MHz (band 4) at angular resolutions of $6''$ and $3''$, respectively, of the uGMRT that are overlaid on the grayscale SDSS (DR12) r -band image. The lowest radio contour is three times the local RMS noise and subsequent contours increase by factors of 2. The local RMS noise is tabulated in Tables 3 and 4 for 250–500 MHz (Column 5) and 550–850 MHz (Column 6) of the uGMRT. The grayscale images are displayed in logarithmic scales to emphasize the optical hosts associated with the respective radio galaxies.

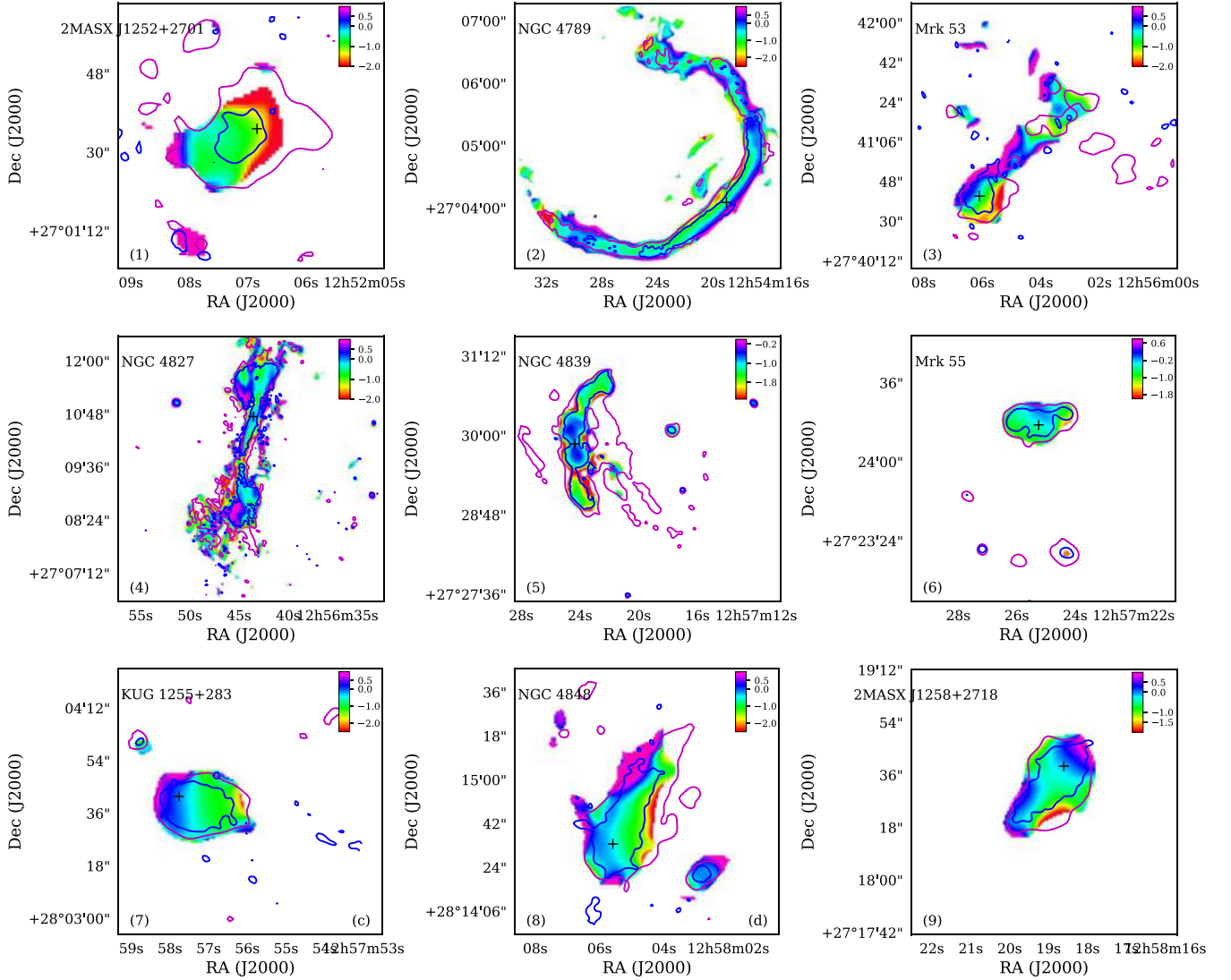


Figure 4. Spectral index images of extended (≥ 12.6 kpc) radio sources in the Coma cluster field that are imaged using 250–500 MHz band and 550–850 MHz band data at matched angular resolutions ($=8''$). The source_ID, as tabulated in Tables 3 and 4, is labeled in the lower-left and lower-right corners of each image. The optical host positions are marked by a “+” sign. These radio sources are in the order presented in Table 3, from left to right and top to bottom. The images are displayed in linear scales, the scale bar gives the spectral index range, and the typical spectral index uncertainty is 0.03. The magenta and blue radio contours (= five times the local RMS noise) are also overlaid, which correspond to the 250–500 MHz (band 3) and 550–850 MHz (band 4) data at the angular resolutions of $6''$ and $3''$, respectively.

In Table 4, we present the radio results for 20 RPS galaxies from Chen et al. (2020) that are confirmed members of the Coma cluster, ordered in increasing R.A. Individual columns depict source_ID, source position, spectroscopic redshift, RMS noises at the 250–500 MHz and 550–850 MHz bands in the near vicinity of the source, integrated flux densities at the 250–500 MHz and 550–850 MHz bands, and the spectral index $\alpha(400\text{--}700\text{ MHz})$ of the source. The source_IDs of the RPS galaxies (in dark-red “+” signs) are labeled adjacent to their positions in Figure 1, which are listed in Table 4.

Eight of the 20 RPS galaxies (Chen et al. 2020) are also extended (≥ 12.6 kpc) radio sources, and are marked by “+” alongside their source_IDs in Table 3. In addition to the eight RPS galaxies, we detected five more galaxies in our low radio frequency images (IDs = b, e, a, o, and t; see Table 4). Figures 3 and 5 show images of these eight and five (total 13) RPS galaxies, respectively, detected in our low-frequency images. The source_ID as tabulated in Table 4 is labeled in the lower-right

corner of each image in Figures 3 and 5. The radio contours, in magenta and blue, correspond, respectively, to the 250–500 MHz and 550–850 MHz band images that are overlaid on the grayscale SDSS (DR12) r -band image. Two sources, GMP 4629 and GMP 4570, i.e., source_IDs (a) and (b) respectively, were not covered in our 550–850 MHz band pointings. Seven RPS galaxies that are not detected in either of the two bands are GMP 4629, GMP 4060, NGC 4854 (a.k.a. GMP 4017), GMP 3071, GMP 3016, GMP 2923, and KUG 1258+277 (a.k.a. GMP 2640), i.e., source_IDs, (a), (f), (g), (l), (m), (n), and (p), respectively. Two sources, GMP 4629 and GMP 3071, from these seven sources, were marginally detected at 1.4 GHz (Chen et al. 2020), and assuming a spectral index $\alpha = -0.7$ for these two sources, the non-detections are consistent in our 250–500 MHz and 550–850 MHz band images within the uncertainties.

Grishin et al. (2021) observed nine low-mass post-starburst galaxies in the Coma cluster using the multiobject Binospec

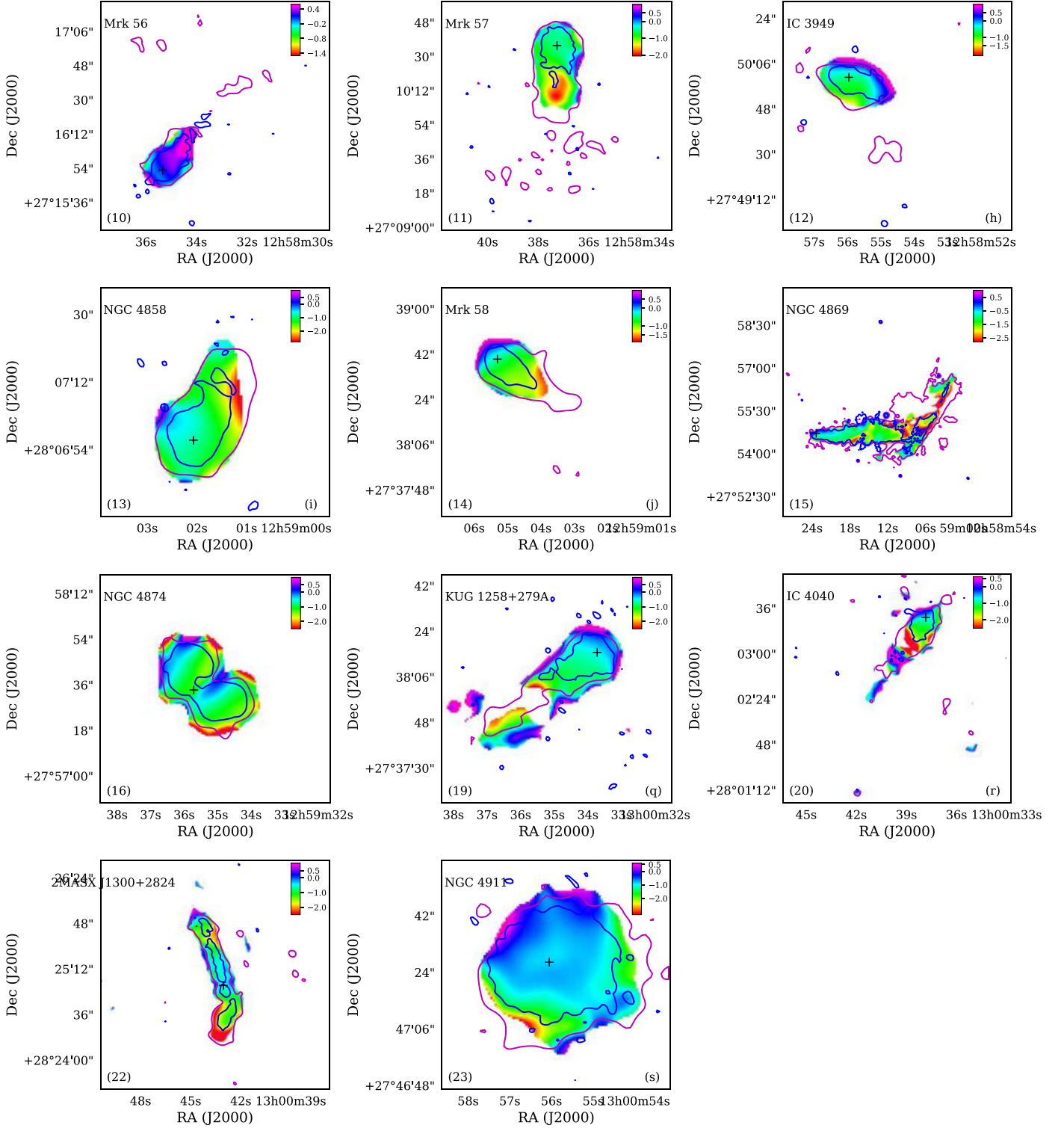


Figure 4. (Continued.)

spectrograph on board the 6.5 m MMT. They reported that two RPS galaxies (GMP 4060 and GMP 2923) exhibit spectacular tails of material stripped by the ram pressure of the hot ICM with $H\alpha$ emission suggesting ongoing star formation, although their disks are not star forming (see also Venturi et al. 2022). The lack of star formation in their disks suggests that they could be classified as *post-jellyfish* galaxies; similar but

typically more massive, *jellyfish* systems have active star formation in their disks and tails (Smith et al. 2010; Yagi et al. 2010). In Appendix A.2, we describe the radio morphologies of the additional five RPS galaxies that are detected in our low radio frequency images, namely, source_IDs, (b), (e), (k), (o), and (t). We also provide salient spectral features, using the formulation discussed above, for the three of these five RPS

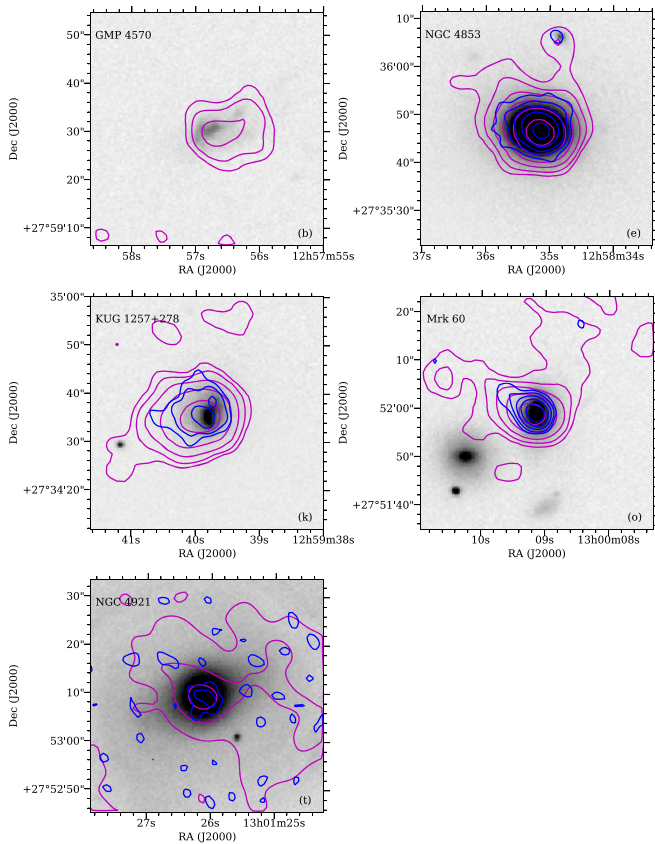


Figure 5. Images of the five (of 20) RPS galaxies not detected as extended radio sources. Eight RPS galaxies detected as extended radio sources are presented in Figure 3. The remaining seven RPS galaxies are not detected in our low-frequency radio data. These radio sources are in the order presented in Table 4, from left to right and top to bottom. The source_ID as tabulated in Table 4 (as alphabetical letters) is labeled in the lower-right corner of each image. The magenta and blue radio contours correspond to 250–500 MHz (band 3) and 550–850 MHz (band 4) at angular resolutions of $6''.1$ and $3''.7$, respectively, which are overlaid on the grayscale SDSS (DR12) r -band image. The lowest radio contour plotted is three times the local RMS noise and increasing by factors of 2. The local RMS noise is tabulated in Table 4 for the 250–500 MHz band (Column 5) and 550–850 MHz band (Column 6) of the uGMRT. The grayscale images are displayed in logarithmic scales to emphasize the optical hosts associated with the respective radio galaxies.

sources that are detected in both bands of uGMRT in Section 4.2.1 below, and images of the remaining three of five RPS sources in Figure 6.

4.2.1. Spectral Structure of RPS Galaxies

Our measurements of the integrated spectral index for all RPS galaxies at the 250–500 MHz and 550–850 MHz bands agree, within uncertainties, with measurements at 1.4 GHz using the VLA (Chen et al. 2020). Figure 6 shows spectral index images of three of five RPS galaxies that are detected in both bands, the 250–500 MHz and 550–850 MHz images (in the order presented in Table 4 with the source_ID labeled in the lower-right corner of each image). Similar to the spectral structure of all tailed radio sources, these remaining sources also show spectral structures that gradually steepen from the flat spectrum head with increasing distance from the head along the tail. The spectral trends of all RPS galaxies are rather similar. Our results hint that the radio tail has a steeper spectrum than the radio core associated with the host galaxy (see below for a quantitative analysis).

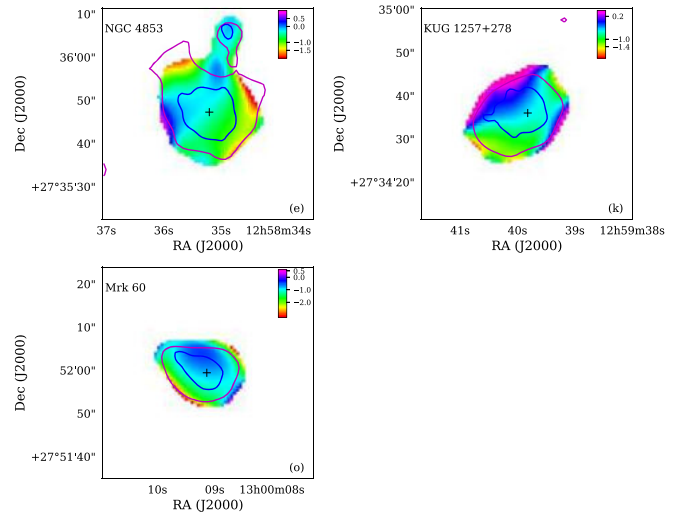


Figure 6. Spectral index images of the remaining three of five RPS galaxies in the Coma cluster field that are imaged using 250–500 MHz band and 550–850 MHz band data at matched angular resolutions ($=8''$). The source_ID, as tabulated in Table 4, is labeled in the lower-right corner of each image. The optical host positions are marked by a “+” sign. The images are displayed in linear scales and the scale bar depicts the spectral index range. The magenta and blue radio contours ($=$ five times the local RMS noise) are also overlaid, which correspond to 250–500 MHz (band 3) and 550–850 MHz (band 4) at the angular resolutions of $6''.1$ and $3''.7$, respectively. See also Figure 4 for more details.

The majority, 13 out of 20 RPS galaxies, show signatures of ram pressure stripping, based on our low radio frequency, 250–500 MHz and 550–850 MHz band images. The presence of radio continuum tails in 13 out of 20 RPS galaxies is reported for the first time at the 250–500 MHz and 550–850 MHz bands of uGMRT, which reveal the presence of relativistic electrons and magnetic fields in the stripped tails. Of these 13, radio continuum tails in three RPS galaxies, (namely, NGC 4853, IC 3949, and NGC 4911) were not detected by Chen et al. (2020). However, radio tails in NGC 4853 and IC 3949 were detected by Roberts et al. (2021) and we detect these, as well as the new tail for NGC 4911. The larger extent of the 250–500 MHz band image as compared to the extent of the 550–850 MHz band image along with our spectral index images unambiguously suggest that the tail has a steeper spectrum than the radio emission associated with the host galaxy. Furthermore, the spectral index between 250–500 MHz and 550–850 MHz shows hints of spectral steepening as a function of distance from the head to the tail. This is typical of head-tail radio sources, suggesting aging of synchrotron electrons (Lal & Rao 2004). Chen et al. (2020) also detected significant $H\alpha$ or star formation tails in half of the RPS galaxies. Finally, the radio continuum tails in our observations for all 13 RPS galaxies are spatially coincident with the $H\alpha$ or star formation tails, consistent with Bravo-Alfaro et al. (2000) and Chen et al. (2020).

5. Discussion

We have used the deepest radio images of the Coma cluster in the 250–500 MHz and 550–850 MHz bands to image the tailed cluster radio galaxies and study, for the first time using a radio-selected sample, the connections between the orientation and intrinsic properties of the tails and the cluster environment. With the primary novel goal of studying the interplay of numerous tailed radio galaxies in the Coma cluster and the merger and accretion history of the Coma cluster, we have

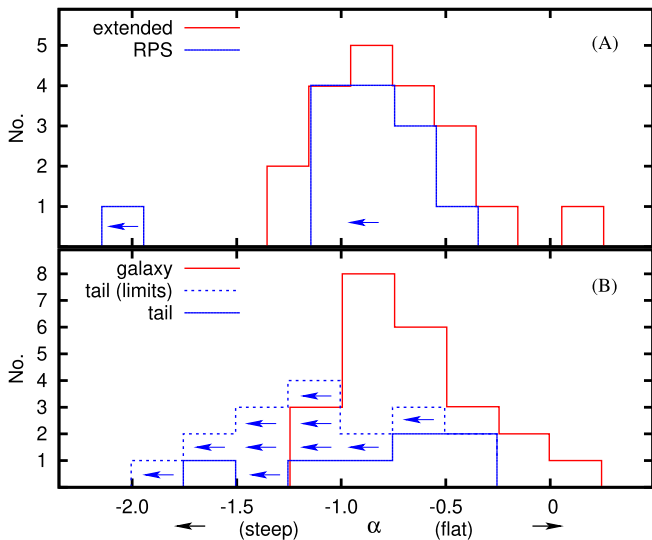


Figure 7. Distributions of α , spectral index between 250–500 MHz and 550–850 MHz (i) for the 20 (of 24) extended radio sources (in red; Column 9 of Table 3), and 13 (of 20) RPS galaxies (in blue; Column 9 of Table 4), shown in the upper panel (A), and (ii) for the host galaxy (in red) and radio tails (in blue) of the 23 (20 extended radio sources including eight RPS galaxies and an additional three RPS galaxies) sources, shown in the lower panel (B). In both panels, the sources in the left bins, $\alpha \lesssim 0.75$, are steep spectrum sources and sources in the right bins, $\alpha \gtrsim 0.75$, are flat spectrum sources. Blue arrows denote RPS galaxies that are detected at 250–500 MHz, but undetected at 550–850 MHz. Note that more than half of the extended radio sources are steep spectrum sources, and a significant number of RPS galaxies also have steep spectra (see upper panel, A). The tail emission has steeper spectra than the emission at the location of the host galaxy in a majority of sources (see lower panel, B).

presented high-resolution, high-sensitivity radio morphologies of 24 extended ($\gtrsim 12.6$ kpc) radio sources associated with Coma cluster galaxies and spectral index distributions for 20 of the 24 extended radio sources using the uGMRT. We have also presented high-resolution, high-sensitivity radio morphologies for 13 (of 20) detected RPS galaxies associated with the Coma cluster and spectral index distributions for 11 of the 13 RPS galaxies using the uGMRT. Barring a few sources, e.g., NGC 4827, the surface brightness of almost all extended sources is a maximum at the location of the optical host and decreases away from the center as expected for radio sources residing in a cluster environment. Similarly, the surface brightness of RPS galaxies is also a maximum at the location of the optical host and decreases away from the center along the tail.

5.1. Spectral Properties

Figure 7 (upper panel, A) shows the distributions of α , the spectral index between 250–500 MHz and 550–850 MHz for the 20 (of 24) extended radio sources (in red; Column 9 of Table 3), and 13 (of 20) RPS galaxies (in blue; Column 9 of Table 4). A majority of the extended radio sources (55%) and RPS galaxies (69%) have steep spectra. In addition, the tail region spectra appear steeper than the cores. Apart from the radiative cooling of relativistic electrons that produce a break/steepening in the spectrum of particles, the electrons’ adiabatic losses, and the decrease of the magnetic fields in radio-emitting plasma that outflows from the cores can further shift the break in the observed radio spectrum to lower frequencies, contributing to the spectral steepening.

Figure 7 (lower panel, B) shows the distributions of α , spectral index between 250–500 MHz and 550–850 MHz for the host galaxy (in red) and radio tails (in blue) of the 23 sources (20 extended radio sources, which includes eight RPS galaxies and three additional RPS only galaxies). We determined emission from the host galaxy (size = D_{25}), and wherever possible, emission from the tail, whose size is equal to the host galaxy. This suggests that the radio properties of the host galaxy are in general agreement with those of star-forming galaxies, with a spectral index $\alpha \approx -0.7$, while the tail appears significantly different. The tail spectral index is found to be steeper compared to the host galaxy, reaching a mean spectral index of $\alpha \approx -1.4$, indicating significant aging of electrons and/or adiabatic expansion through the tail. Although we used only uGMRT data to derive the spectral results presented in this paper, we note that our integrated spectra are consistent with earlier work, e.g., RPS galaxies: Chen et al. (2020) and NGC4869: Lal (2020b). Furthermore, the radio continuum in RPS galaxies is found to be collocated with $H\alpha$, not only within the host galaxy, but also within the extended tails in several galaxies (Chen et al. 2020). Although the nature of the interplay between gas stripping and star formation activity might vary from galaxy to galaxy depending on their size, location, and orbit, it seems that gas removal is associated with the quenching of star formation (see also Boselli et al. 2022). A detailed analysis of these properties for these sources, along with fainter and detected (unresolved and extended) sources, will be undertaken as a separate project.

5.2. Equipartition Parameters and Radiative Ages

Due to a lack of polarization information, for both the extended and RPS galaxies in the Coma cluster, the estimates of the magnetic field are performed using the minimum energy conditions. We assume (i) a cylindrical or a spherical geometry for the source, (ii) an electron population radiating at frequencies from 100 MHz–10 GHz, (iii) the energy carried by the electrons is half the total energy of all particles, (iv) the filling factor of the emitting region is unity, and (v) the angle between the uniform magnetic field and the line of sight is 90° (Miley 1980). We note that this method calculates the synchrotron luminosity using a fixed high- and low-frequency cutoff, instead, low and high energy cutoffs for the particle distribution should be used (Brunetti et al. 1997; Beck & Krause 2005; van Weeren et al. 2009, and references therein). Taking the latter into account, the corrected equipartition parameters do not change significantly. Furthermore, taking a ratio of 100 instead of 2 for the energy in relativistic protons to that in electrons results in equipartition magnetic field strengths about a factor of 3 higher. We measure the integrated flux densities from both bands, the 250–500 MHz and 550–8500 MHz images, and determine spectral indices, a simple power law, and estimate the equipartition magnetic field, the minimum energy density, and the minimum pressure exerted by the relativistic gas in the radio source. We further assume $\alpha = -0.7$ for sources that are not detected in the 550–850 MHz band of uGMRT because the non-detections are consistent in our 250–500 MHz and 550–850 MHz band images within the uncertainties.

Table 5

Radio Luminosity and Equipartition Parameters Along with Radiative Age for 16 Extended Cluster-member Sources, Eight Extended/RPS Sources, and Five RPS Galaxies; see also Section 5.2

	Source_ID	LLS (arcmin)	$L_{400 \text{ MHz}}$ ($\text{erg s}^{-1} \text{ Hz}^{-1}$) ($\times 10^{20}$)	B_{min} (μG)	U_{min} (erg cm^{-3}) ($\times 10^{-13}$)	P_{min} (dyne cm^{-2}) ($\times 10^{-13}$)	Age (yr) ($\times 10^8$)
	(1)	(2)	(3)	(4)	(5)	(6)	(7)
1	2MASX J12520684+2701352	0'45	0.4	2.4	5.8	1.9	1.7
2	NGC 4789	7'37	28.1	2.5	5.8	1.9	1.7
3	Mrk 53	1'23	0.9	3.1	9.1	3.0	1.6
4	NGC 4827	4'66	19.7	3.0	8.7	2.9	1.6
5	NGC 4839	2'47	27.2	3.1	9.3	3.1	1.6
6	Mrk 55	0'57	0.5	3.0	8.5	2.8	1.6
	(b) GMP 4570 ^b	0'25	0.1	2.7	7.2	2.4	1.7
7	(c) KUG 1255+283 ^a	0'67	3.0	3.5	11.9	4.0	1.5
8	(d) NGC 4848 ^a	1'23	7.7	3.5	11.5	3.8	1.5
9	2MASX J12581865+2718387	0'71	1.5	2.5	6.3	2.1	1.7
	(e) NGC 4853	0'26	1.0	3.4	10.9	3.6	1.5
10	Mrk 56	1'21	1.0	2.0	4.0	1.3	1.8
11	Mrk 57	0'90	2.2	2.8	7.6	2.5	1.7
12	(h) IC 3949 ^a	0'50	1.1	2.8	7.7	2.6	1.7
13	(i) NGC 4858 ^a	0'79	2.8	3.1	9.4	3.1	1.6
14	(j) Mrk 58 ^a	0'74	0.9	3.0	8.6	2.9	1.6
15	NGC 4869	6'63	165.1	2.9	8.3	2.8	1.6
16	NGC 4874	0'50	62.5	7.0	46.6	15.5	0.8
	(k) KUG 1257+278	0'38	0.1	2.4	5.4	1.8	1.8
17	2MASX J12594009+2837507	0'72	0.3	1.3	1.6	0.5	1.7
	(o) Mrk 60	0'41	0.2	2.9	8.4	2.8	1.7
18	2MASX J13001780+2723152	1'79	5.2	1.5	2.1	0.7	1.7
19	(q) KUG 1258+279A ^a	1'01	1.5	2.9	8.4	2.8	1.6
20	(r) IC 4040 ^a	2'18	8.4	3.2	10.2	3.4	1.6
21	2MASX J13004067+2831116	0'96	3.7	2.8	7.8	2.6	1.6
22	2MASX J13004385+2824586	1'85	3.2	3.0	8.7	2.9	1.6
23	(s) NGC 4911 ^a	0'73	8.2	3.0	8.7	2.9	1.6
	(t) NGC 4921 ^b	0'47	0.1	3.2	9.7	3.2	1.6
24	NGC 4927	0'66	1.5	3.5	12.0	4.0	1.5

Notes. Column 1: source name as identified in NED; all 29 sources are ordered in increasing R.A.

^a Extended radio source that is also an RPS galaxy (see Table 3 and Section 4.2 for a discussion).

^b We assume $\alpha = -0.7$ for sources that are not detected at 550–850 MHz (band 4) of uGMRT.

Column 2: the largest linear size at 250–500 MHz (band 3). Column 3: monochromatic radio luminosity at 400 MHz using 250–500 MHz band data. Columns 4–6: equipartition magnetic field, minimum energy density, and minimum pressure. Column 7: maximum radiative lifetime.

We also derive the radiative lifetime (Jaffe & Perola 1973) using

$$t = 1590 \times \frac{\sqrt{B_{\text{eq}}}}{(B_{\text{eq}}^2 + B_{\text{IC}}^2)} \times \frac{1}{\sqrt{(1+z)} \nu_{\text{br}}} \text{ Myr.}$$

Here, B_{eq} is the equipartition magnetic field (in microgauss), B_{IC} is the inverse Compton equivalent magnetic field ($=3.25(1+z)^2 \mu\text{G}$), and the frequency where the radio spectrum changes by 0.5, called the break frequency, ν_{br} is expressed in gigahertz (Miley 1980). Compared to earlier studies at high frequencies ($\gtrsim 1.4 \text{ GHz}$), here, we reported three new detections for the RPS galaxies for the first time at the 250–500 MHz and 550–850 MHz bands of uGMRT. We thus believe that ν_{br} should be below 1.4 GHz, and therefore, assume $\nu_{\text{br}} = 0.7 \text{ GHz}$.

Table 5 lists the largest linear size of the source at 250–500 MHz (band 3) of uGMRT, and these equipartition parameters, namely, monochromatic luminosity at 400 MHz using 250–500 MHz band data, equipartition magnetic field, minimum energy density, minimum pressure, and the radiative

age. These radiative age estimates are consistent with the hypothesis that the radio plasma ages due to synchrotron cooling and inverse Compton losses.

As Table 5 shows, the minimum pressure values for all the cluster-member galaxies are comparable (a few dyne per cubic centimeter), with one exception, NGC 4874 (see Figure 8). NGC 4874 is one of the two BCGs at the cluster core (the other being NGC 4889, not detected in the radio band, see also Figure 9). The projected linear extent of NGC 4874 (in the 250–500 MHz band) is 0'81 ($\approx 22.7 \text{ kpc}$) and the spectral index is -0.67 ± 0.08 (Lal 2020a), which suggests that it could be a compact steep spectrum source (see also Fanti et al. 1990; O'Dea 1998). Its age (Table 5) is consistent with this possibility. It hosts a mini-corona of $\sim 1 \text{ keV}$ gas (see Vikhlinin et al. 2001; Sun et al. 2005; Sanders et al. 2014). Sun et al. (2007) showed that such systems are quite common around massive galaxies in clusters. For NGC 4874, the radio jet appears to be confined by the 1 keV mini-corona (Sun et al. 2007; Sanders et al. 2014) and only blossoms into radio lobes after the jet has transitioned from the corona to the hot (nearly 10 keV) ICM. Indeed, Figure 8 shows the prominent wide-angle tail becoming prominent outside the central corona. With

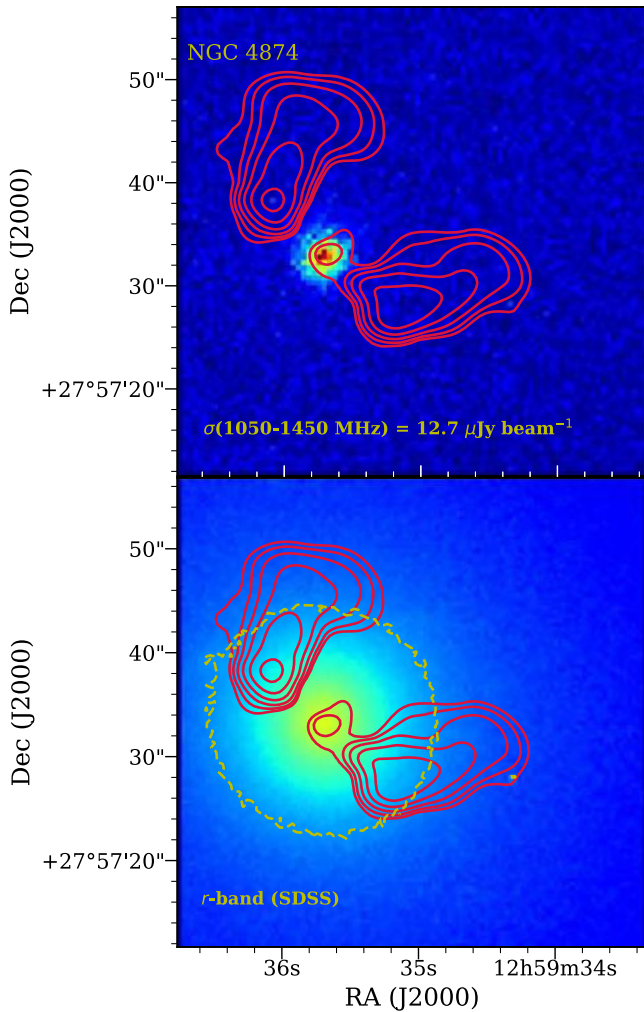


Figure 8. (Top) NGC 4874 Chandra X-ray image (bin = $1''$, convolved with $\sigma = 3''$ Gaussian) in the 0.5–4.0 keV energy band with uGMRT 1050–1450 MHz band contours (red; $2''$ resolution from Lal (2020b)). uGMRT provides the combination of best sensitivity and higher angular resolution image (see also Table 1). The lowest radio contour plotted is three times the local RMS noise (labeled in the lower-left corner) and subsequent contours increase by factors of 2. (bottom) SDSS r -band image with the same uGMRT contours as in the top panel. The yellow SDSS r -band surface brightness contour is plotted at $0.1\times$ the peak surface brightness ($=8.73$ photons s^{-1} arcsec $^{-2}$). The low-frequency radio lobes bend and flare up outside the X-ray mini-corona, but are completely embedded within the optical host ($D_{25} = 144''$) galaxy (for previous studies of the radio lobes around NGC 4874, see Sun et al. 2005 and Sanders et al. 2014). Comparing these higher frequency radio observations to those in Figure 3 (250–500 MHz and 550–850 MHz), we note there is no evidence of additional extended radio structures (e.g., at larger distances from NGC 4874) that might have arisen from an earlier/older outburst from the central SMBH.

its high pressure environment, at the bottom of the potential well of Coma, it should not be surprising that the minimum pressure, derived from the radio, is significantly higher than that of the other noncentral Coma galaxies.

5.3. Orientation of Trailing Features

A characteristic trait of an RPS galaxy is the tail of gas trailing behind its host galaxy, opposite to its direction of motion. The slender curved morphology suggests an orbit through the cluster, along which a trail of radio-emitting material that has been left behind. For example, we find an ensemble of seven sources, namely, KUG 1255+283,

GMP 4570, NGC 4848, IC 3949, NGC 4858, Mrk 58, and NGC 4869, all within $\sim 14'$ (≈ 390 kpc) of each other, located $\sim 15'2$ ($=445$ kpc) east of NGC 4874, which seem to be moving into the cluster center, though seen in projection. We visually estimated the direction of the stripping features of all extended radio sources and RPS galaxies relative to one of the two core BCGs of the Coma cluster, NGC 4874. To estimate the projected direction of motion of the host galaxy, we assume that tails of radio sources are collimated jets as they trail away from the host galaxy. In our high-resolution, high-sensitivity deep images, the radio tails have been detected in almost all extended sources and detected RPS galaxies. It is not, however, possible to produce 3D curvature because we lack knowledge of both the tangential velocities and the complete orbits.

The spatial orientations of the projected motions, shown as vectors, of the host galaxies are shown in Figure 9. These projected motions are consistent with the spectral index distribution between the 250–500 MHz band and 550–850 MHz band, i.e., the spectra are flattest toward the optical hosts, in the vicinity of the radio cores and they gradually steepen along the radio tails. In the background, we show an SDSS (DR12) r -band image of the Coma cluster with 250–500 MHz band contours overlaid (from the thumbnail images presented in Figures 3 and 5). Seven RPS galaxies that are undetected at 250–500 MHz and 550–850 MHz by uGMRT are marked with boxes. The subsamples of 24 extended radio sources (see Table 3) and 20 RPS galaxies (see Table 4) are not homogeneous, and the sample of Huchra et al. (1990) is apparent magnitude limited. Here, we are aiming to characterize the morphologies of extended radio sources and RPS galaxies in light of the recent (ongoing) merger of the Coma cluster with the NGC 4839 group. Hence, we believe that inhomogeneities in the subsamples are not an issue, although their small sizes are limiting.

Following the analysis in Roberts & Parker (2020), in Figure 10, we show the distributions of the redshifts (upper panel) and the distributions of the orientation of the projected motion of the host galaxy with respect to its radial vector, θ (lower panel). An angle, $\theta = 180^\circ$ corresponds to the host galaxy moving directly toward the cluster center, and an angle $\theta = 0^\circ$ corresponds to the host galaxy moving away from the cluster center. Note that there is evidence for more extended radio sources and RPS galaxies with c_z larger than the mean Coma value ~ 6900 km s^{-1} , even after excluding the 2MASX J13001780+2723152 (source_ID 18, $c_z = 11121$ km s^{-1}) extended radio source. The p -value of the Kolmogorov–Smirnov test is 0.0145, which suggests that the extended radio sources and RPS galaxies samples do not follow the given Huchra et al. (1990) distribution. Equivalently, there is a suggestion that the mean ($=7367$ km s^{-1} for extended radio sources and 7025 km s^{-1} for RPS galaxies), as well as the median ($=7467$ km s^{-1} for extended radio sources and 7526 km s^{-1} for RPS galaxies) velocity of sources is higher than the mean velocities of Coma cluster galaxies. This difference suggests that RPS galaxies and those with extended radio emission are in the early phases of merging with the Coma cluster.¹⁴ Furthermore, a majority of galaxies, both extended radio sources as well as the RPS galaxies, show

¹⁴ We note that all the effects are seen in projection, and hence, clearer correlations with orientation and velocity will be complicated by unknown projection effects and the location of galaxies along the line of sight through the cluster.

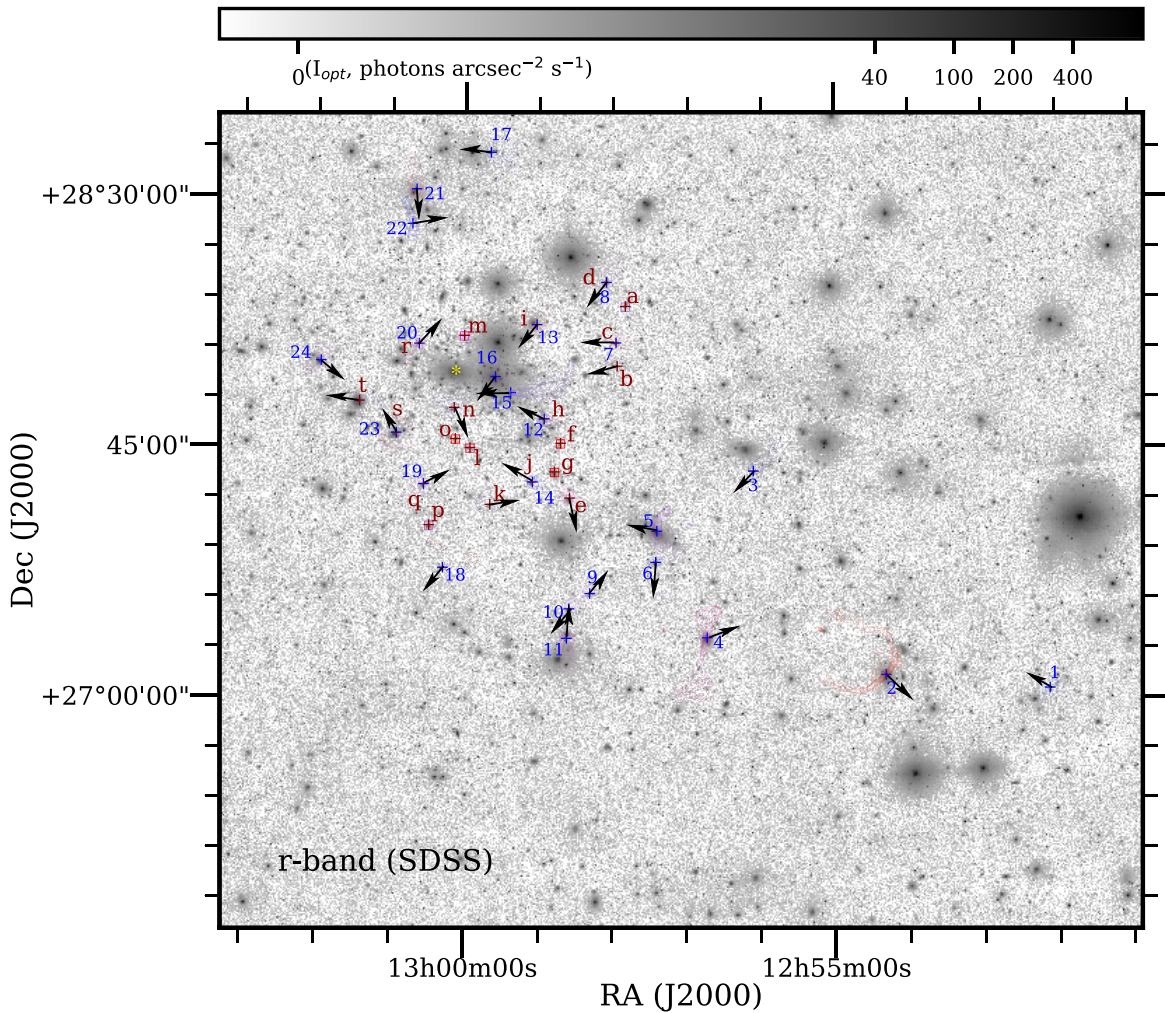


Figure 9. Composite SDSS (DR12) r -band image of the Coma cluster with superposed uGMRT (250–500 MHz band) contours. Two BCGs, NGC 4874 (source_ID 16) and NGC 4889 (marked with “*”) and is 4.58 east of NGC 4874), are also shown. The positions of the extended radio sources (Table 3) and the RPS galaxies (Table 4) are marked with magenta “+” and blue “+”, respectively. The radio contours corresponding to the 250–500 MHz band (displayed in thumbnail images presented in Figures 3 and 5) are displayed in logarithmic scale (=logarithm of 10 times the angular size of the source in arcminutes) and overlaid on the SDSS (DR12) r -band image at their proper position to emphasize the optical hosts associated with the respective radio galaxies. The radio contours are color coded accordingly to redshifts, where blue marks the lowest redshift ($=0.01523$) galaxy, red marks the highest redshift ($=0.03707$) galaxy; the intervening galaxies are colored with increasing gradient from smaller (blue) to higher (red); see also Figure 2 for the redshift scale bar). The lowest radio contour is six times the local RMS noise, for clarity and subsequent contours increase by factors of 2. The local RMS noise is tabulated in Tables 3 and 4 for 250–500 MHz (Column 5) of the uGMRT. Seven RPS galaxies that are neither detected in the 250–500 MHz band nor in the 550–850 MHz band of uGMRT are marked with boxes (also color coded accordingly to redshifts). The vectors depict the projected motion of these galaxies in the ICM as inferred from their radio morphologies.

angles between 90° and 180° , i.e., preferentially moving toward the cluster center. Given that the timescales for stripping can be short (see Boselli et al. 2022, for a review and references therein), especially for galaxies entering the dense core of the cluster, such skewness can arise naturally if the majority of objects recognized as RPS galaxies and extended radio sources are infalling deep into the cluster potential well for the first time. The fact that RPS galaxies and extended radio sources share the same trend is also suggestive that stripping makes an impact on the activity of the central radio source.

Our result that a majority of galaxies with tails are moving toward the cluster center, i.e., the radio trails point away from the cluster center, is fully consistent with the findings of Smith et al. (2010), Roberts & Parker (2020), and Roberts et al. (2021). We note that the tail orientations of the small post-starburst galaxy sample in Grishin et al. (2021) are less clear and that their selection criteria may favor objects with more

tangential orbits. Roberts & Parker (2020) noted that the motion of the majority of stripping galaxies was pointing away from the cluster center, i.e., these galaxies are moving toward the cluster center. Here, note that a majority of our extended sources and RPS galaxies are within 1.4 deg^2 , whereas Roberts & Parker (2020) extend to much larger radii covering $\sim 9 \text{ deg}^2$ with the bulk of the galaxies lying between 1.4 and $\sim 9 \text{ deg}^2$. Thus, not only the galaxies in the near vicinity of the cluster center, but also galaxies, with tails and signs of ram pressure stripping, located much farther away, as seen in projection, all seem to be moving toward the cluster center.

5.4. X-Ray Properties

There has been an increasing effort to obtain multiwavelength data for these extended radio sources and RPS galaxies. Figure 2 shows the XMM-Newton 0.5–2.5 keV image of the Coma cluster (Lyskova et al. 2019), with positions of the extended and the RPS

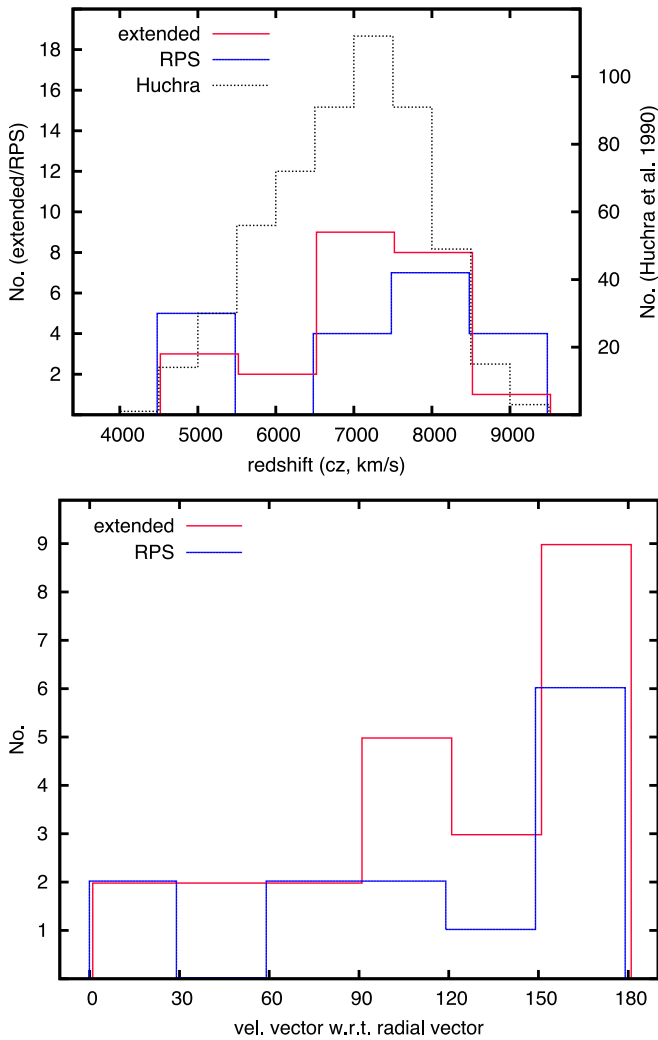


Figure 10. Histograms showing distributions of redshifts (upper panel) and orientation of the projected motion of the host galaxy with respect to its radial vector, θ (lower panel), in projection. Eight of our extended radio sources that are also galaxies with RPS tails of gas and embedded young stars are included in both distributions. The histograms (slightly shifted with respect to one another for clarity) are for the extended radio sources (in red) and for RPS galaxies (in blue). The histogram showing the distribution of all galaxies within the mapped (~ 7.5 deg²) area and with $4000 < cz < 9400$ km s⁻¹ corresponds to the Y-axis on the right side (from Huchra et al. 1990). Note that there is weak evidence for more extended radio sources and RPS galaxies with cz larger than the mean Coma value ~ 6900 km s⁻¹, which suggests that the extended radio sources and RPS galaxies samples do not follow the given Huchra et al. (1990) distribution. The radial vector is the line joining one of the two core BCGs of the Coma cluster, NGC 4874, with each host galaxy. The position angles of the projected motions of the host galaxies are shown in Figure 9. The sources with large $\theta \gtrsim 90^\circ$ are moving toward the cluster center and the sources with small $\theta \lesssim 90^\circ$ are moving away from the cluster center. There is a clear excess of sources with a large angle with respect to the radial vector connecting one of the two core BCGs, NGC 4874, to their position. Hence, there is an excess of infalling galaxies, suggesting first infall. While not of high significance, the excess is seen for both the RPS and extended radio source samples.

galaxies marked with circles and boxes, respectively. The names of the sources and their positions are color coded accordingly to redshifts. The X-ray emission from the bright core and extended X-ray emission from several extended radio sources has been detected (see Figure 2). Similarly, the X-ray emission from the core and the tails for the RPS galaxies have been detected. For example, Sanders et al. (2014) reported a narrow X-ray tail in Mrk 60 using Chandra (see also Sun et al. 2022).

Barring 2MASX J12520684+2701352, Mrk 53, and 2MASX J12594009+2837507, extended radio sources that do not have X-ray data (see Figure 2), all extended sources, as well as the RPS galaxies, are detected in the X-ray band. The radio core and the associated radio jets of the wide-angle-tail radio source are not covered in the XMM-Newton image, but the extended radio relic source, 1253+275, is partly covered in the XMM-Newton image (see Figure 2). Lal (2020b) reported in detail, the radio morphology and the hot gas environment of NGC 4869, and below we discuss the interaction of NGC 4789 and NGC 4839 with their environments.

5.4.1. Interaction of Radio Sources with the Surrounding ICM

Churazov et al. (2021, and references therein) discussed the ongoing merger of the NGC 4839 group with Coma. They argue that the group has completed its first passage through the cluster core (see also Burns 1990; Lyskova et al. 2019; Zhang et al. 2019). In this model, the Coma core has experienced two shocks, first through the bow shock driven by NGC 4839 during its first passage through the cluster, and subsequently, through a *secondary shock* associated with the gas settling back to quasi-hydrostatic equilibrium in the core. The bow shock associated with the first infall of NGC 4839 has detached from the group and propagated southwest to the (current) location of 1253+275, the relic radio. Interior to the secondary shock (a.k.a. *mini-accretion shock*), is a more diffuse and extended radio halo. In this context, we discuss, below, the salient features, i.e., the interplay of the radio synchrotron emission and its hot gas environment of two (NGC 4789 and the 1253+275 relic, and NGC 4839) of the largest, $\gtrsim 2.5$ ($\gtrsim 70$ kpc) radio sources in our sample.

NGC 4789 and the 1253+275 relic—The upper panel of Figure 11 shows the uGMRT low-angular resolution ($=12''$) spectral index image of NGC 4789. The head located close to the optical host has a flat spectrum between 250–500 MHz and 550–850 MHz. The spectrum between these two bands gradually steepens with increasing distance from the head along the two radio jets, typical of head-tail radio galaxies. In addition, we notice transverse spectral structure, a gradual steepening from southwest to northeast across the width of the radio tail, close to the head, before the jets bend toward the northwestern direction, possibly due to the ballistic motion of the host galaxy through a dynamic ICM. In the lower panel of Figure 11, we show profiles of the spectral index to quantify the transverse spectral structure at three locations (marked in the upper panel, Figure 11), at the location of the host galaxy, and $30''$ to the north and $30''$ to the south. The north/upper and the center (via the radio core) profiles are similar within uncertainties, while the south/lower profile is relatively steeper.

Figure 12 displays the low-angular resolution ($=45''$) image of the wide-angle radio source NGC 4789 and the extended radio relic source in the 250–500 MHz band. We clearly detect the extended source, 1253+275, which was otherwise resolved in our high-angular resolution image. It is not detected in our 550–850 MHz band image, possibly due to (i) the presence of the compact, bright Coma A source, $\sim 33'$ to the north of NGC 4789, (ii) the (u, v) coverage, and (iii) the largest linear structure ($\approx 17''$ at $\sim 5''$ angular resolution) that can be imaged in this band.

The radio relic source, 1253+275, plausibly associated with the *runaway merger shock* (see also Zhang et al. 2019) has a

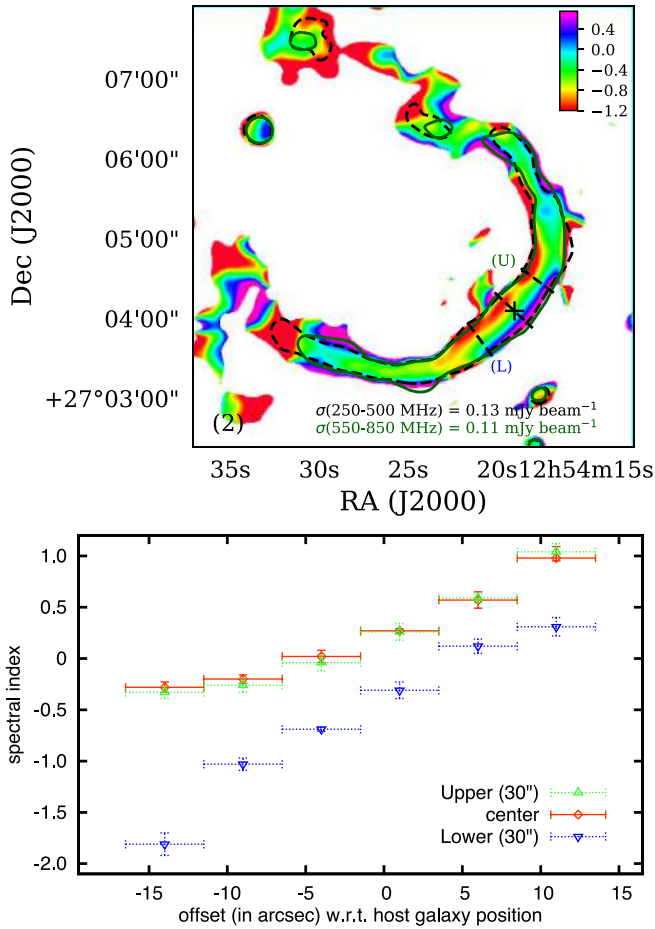


Figure 11. uGMRT low-angular resolution ($=12''$) spectral index image of NGC 4789 (upper panel). The optical host position is marked with a “+” sign. The image is displayed in linear scale (the scale bar depicts the spectral index range). The black (dashed) and green radio contours ($=$ five times the local RMS noise) are also overlaid, which correspond to 250–500 MHz (band 3) and 550–850 MHz (band 4), respectively. The lower panel shows (oversampled) transverse spectral structure, a gradual steepening from southwest to northeast, across the width of the radio source (along the direction of motion). The profiles are determined along three *slices* marked in the upper panel, at the location of the host galaxy, and $30''$ to the north/upper (marked “U”) and $30''$ to the south/lower (marked “L”).

large extent $\approx 32' \times 10'$ ($\approx 1.08 \times 0.34$ Mpc 2), which is broadly consistent with Giovannini et al. (1991) (see also Bonafede et al. 2021, 2022, Figures 1 and 4, respectively). The sharpness of the surface brightness contours suggests that the relic consists of a high-surface-brightness southwestern part and a fainter, diffuse low-surface-brightness northwestern part. Although in the XMM-Newton X-ray image (Figure 12) a shock is not readily seen, the presence of a discontinuity in X-ray and Sunyaev-Zel’dovich data at the location of the radio relic source is confirmed by several studies (see, e.g., Simionescu et al. 2013; Basu et al. 2016). The radio relic is located at the cluster periphery, $\sim 70'$ (≈ 2 Mpc) from the Coma cluster center, in the habitable zone of *runaway* shocks, in the southwest direction, consistent with the predictions of Zhang et al. (2019) (see also Lyskova et al. 2019; Churazov et al. 2021, for more detailed discussions of the relic as originating from a runaway shock). Its flux density in the 250–500 MHz band is $S_{400 \text{ MHz}} = 0.98 \pm 0.06$ Jy, not including contributions from NGC 4789, 5C 4.24, 5C 4.29, 5C 4.31, and FS1 radio sources. Our measurement for the radio relic source is consistent with the

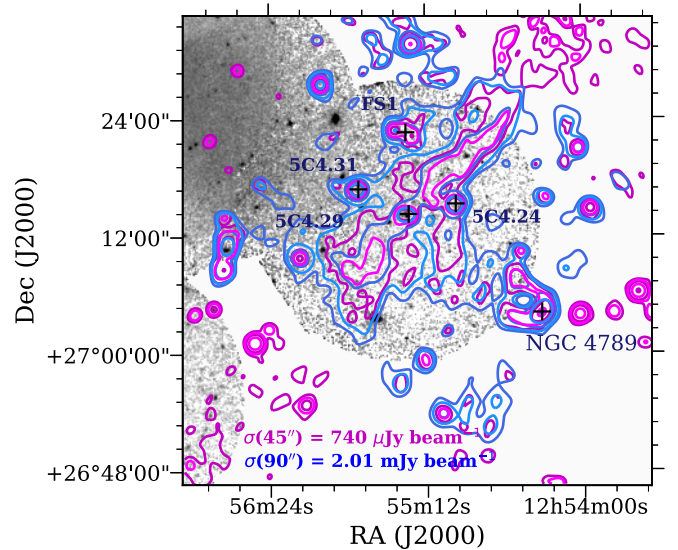


Figure 12. Low-angular resolution image of NGC 4789 and the radio relic, 1253+275, at $45''$ (in light red) and $75''$ (in light blue) in the 250–500 MHz band of uGMRT; the radio contours are overlaid on the grayscale background-subtracted, exposure corrected XMM-Newton image (0.5–2.5 keV). The lowest radio contour is three times the local RMS noise (see the lower-left corner) and subsequent contours increase by factors of 3. The compact radio sources marked with the “+” sign (are labeled) were subtracted to determine the integrated flux density of the radio relic source. Note the extended radio relic source shows diffuse emission (in $75''$, low-angular resolution image) with a central ridge, a bridge of emission connected with the narrow-angle-tailed galaxy NGC 4789.

fairly straight spectrum, $\alpha = -1.18 \pm 0.06$ found by Giovannini et al. (1991) using WSRT 326 and 608 MHz data.

The tailed radio source to the southwest of the relic is associated with NGC 4789, seen clearly in our high-resolution images (Figure 3 and see also Figure 11). The extended radio relic shows diffuse emission with a central ridge, a bridge of emission connected to the narrow-angle tailed galaxy NGC 4789 (see Figure 12), which suggests that this tailed radio galaxy could be the source of the seed particles feeding the radio relic, 1253+275, providing a direct connection between a radio relic source and the radio galaxy, NGC 4789 (Giovannini et al. 1991; van Weeren et al. 2017; Bonafede et al. 2021, 2022).

NGC 4839—Figure 13 displays the 0.5–2.5 keV XMM-Newton image with $15''$ resolution radio contours overlaid. We see indications of a bow shock and of ram pressure stripping around NGC 4839 in both radio and X-ray data. The hot sheath, seen in the X-ray data surrounds the optical host NGC 4839 and coincides with the low-surface brightness diffuse radio emission. We also note the tail-like X-ray structure, $\approx 2.5'$ (~ 70 kpc), pointing away from the Coma cluster core. Co-spatial with the X-ray tail is radio emission whose detailed surface brightness appears to match that in the X-ray, e.g., a spine of emission extending along the southeast side of the tail. Integrating the band 3 and band 4 emission over the region, which is at least five times the beam size, and above their $3 \times$ RMS contour to reduce statistical errors, in the tail, we derive spectral index -1.72 ± 0.31 , significantly steeper than that of the inner radio lobes (see the spectral index map of NGC 4839 in Figure 4). The X-ray emission, corresponding to the NGC 4839 group, seems somewhat disconnected from the diffuse, extended X-ray emission from the Coma cluster. The two-sided radio jet with slight distortions emerging in P.A.

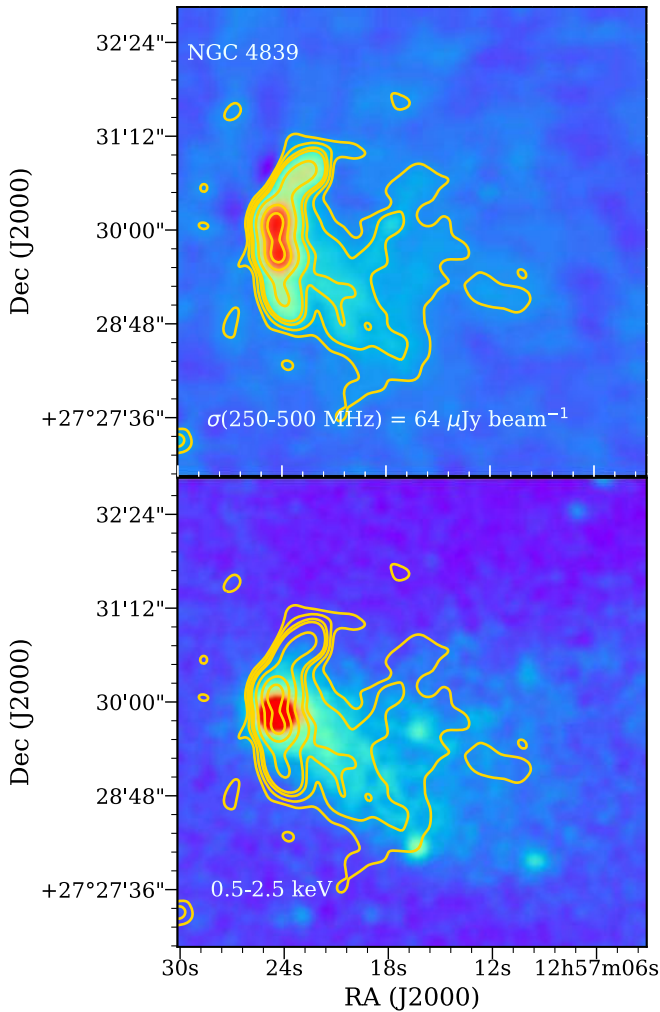


Figure 13. (Top) The uGMRT 250–500 MHz (15'' resolution) image of NGC 4839 with radio contours (starting at three times the local RMS noise; labeled in the lower-left corner; and increasing by factors of 2). (bottom) The 0.5–2.5 keV background-subtracted, exposure corrected XMM-Newton image with the same uGMRT contours as in the top panel. Note the tail-like X-ray emission (in light green), whose spectrum is well described by thermal plasma with the temperature $\sim 2\text{--}4$ keV (e.g., Lyskova et al. 2019) is co-spatial with the radio tail. This suggests that both thermal and nonthermal plasmas are affected by the same velocity field. The detailed surface brightness of the radio tail appears to match that in the X-ray, e.g., a spine of emission extends along the southeast side of the tail. Spectral steepening can be seen in the spectral index map (Figure 4) between the pair of compact inner lobes (top panel red) and the more extended (light green) outer radio structures.

$\approx 0^\circ$, with a bow-shock-like feature with indications of ram pressure stripping (see also Figure 3) was used to suggest that the NGC 4839 group was on its initial infall into the Coma cluster (Neumann et al. 2001). However, subsequent analysis showed that the detailed X-ray morphology of the tail (Figure 13), and the location of the radio relic were best explained as arising from a *slingshot* effect, as NGC 4839, initially infalling into Coma from the northeast, slows and crosses the apocenter, and reverses its radial velocity (see Lyskova et al. 2019; Sheardown et al. 2019; Zhang et al. 2019).

6. Conclusions

A study of a rich and nearby cluster like Coma can establish a local reference for studies of clusters at higher redshifts. Hence, we obtained new high-resolution, high-sensitivity, deep

uGMRT images of a ~ 7.5 deg² region centered on the Coma cluster in two bands, 250–500 MHz and 550–850 MHz, with angular resolutions of $\sim 6''$ and $\sim 3''$, and RMS noise levels of 21.1–36.6 μJy and 12.8–42.4 μJy , respectively. We detected 135 sources in the 250–500 MHz band that have clear extensions (minimum size of $0'.45$, 12.6 kpc at the distance of the Coma cluster) with peak-to-local-noise ratio >4 . We culled a complete sample of 24 radio sources that are associated with the Coma cluster galaxies, whose radial velocities are in the range of 4000–9400 km s^{-1} . We also supplement this radio-selected sample with 20 RPS galaxies from (Chen et al. 2020), of which eight are included in the extended radio source sample and an additional five are detected and extended (but with either peak-to-local-noise ratio <4 or extent $<0'.45$).

We presented radio morphologies, radio spectra (from 250–500 MHz and 550–850 MHz), spectral maps, and equipartition properties for these two, extended radio sources and RPS galaxy, samples. Our results are summarized as follows:

1. Radio continuum tails, as expected from the effects of ram pressure, are found in almost all the sources (19 of 24 extended radio sources and nine of 13 detected RPS galaxies) in both bands.
2. The radio extent at two bands of the radio continuum tails is consistent with the length being limited by synchrotron cooling time.
3. The derived spectral structure in all tailed radio sources suggests that the radio spectra steepen from the heads to the outer parts of the tails, as is typically seen in tailed radio sources.
4. The majority of extended radio sources (55%) and RPS galaxies (69%) are steep spectrum sources. In addition to radiative (synchrotron and inverse Compton) cooling, these sources may also undergo adiabatic cooling and the decrease of the magnetic fields in radio-emitting plasma that outflows from the cores can further shift the break in the observed radio spectrum to lower frequencies, contributing to the spectrum steepening.
5. The equipartition properties lie within a narrow range (e.g., $P_{\text{min}} = 1\text{--}3$ dynes cm^{-2}), with the exception of NGC 4874, one of the two core BCGs, whose central energy density and pressure are about five times higher than all the other Coma-member galaxies, and whose radio source age is about 50% that of the other Coma galaxies. It is plausible that selection effects may be responsible for the narrow range.
6. The radio jet of NGC 4874 appears to be confined by the 1 keV mini-corona, and they *blossom* into radio lobes after the jet has transitioned from the corona to the hot ICM (see also Sun et al. 2007; Sanders et al. 2014). A comparison of the lower and higher radio frequency observations shows no evidence, at lower frequencies, for a population of relativistic particles from any earlier (older) outbursts from the central SMBH. In addition, the NGC 4874 radio source is relatively young—its age is at least ~ 2 times smaller than all the other extended sources (see Table 5). The activity of the central AGN in the radio band can be viewed as one of the arguments in favor of NGC 4874, rather than NGC 4889, being the true center of the Coma cluster potential well in the near past.
7. We find an ensemble of seven sources, within $\sim 14'$ (≈ 390 kpc), located $\sim 15'.2$ ($=445$ kpc) east of the cluster

center, and all moving toward the cluster center, though seen in projection.

8. We show that in both the extended radio source sample and the RPS galaxy sample, the radio morphologies and their spectra suggest that these galaxies are moving radially toward the cluster center, in agreement with Smith et al. (2010), Roberts & Parker (2020), and Roberts et al. (2021) who used differently selected samples. This implies that these galaxies are (predominantly) recent newcomers to Coma and are infalling into Coma for the first time. We emphasize that this refers to objects located in the Coma core (at least in projection).
9. We find a suggestion that the mean recession velocity of sources moving radially toward the cluster center is higher than the mean velocity of Coma cluster galaxies. Coupled with the argument that tailed sources in the core are on their first infall, this suggests that most of them are infalling from the near side of the Coma cluster.
10. The diffuse tail of emission trailing the tailed radio galaxy associated with NGC 4789 is detected in both uGMRT bands. Moreover, we report transverse spectral structure, a gradual steepening from southwest to northeast across the width of the radio source.
11. The radio relic, B1253+275, plausibly associated with a runaway merger shock (see also Zhang et al. 2019) has a large extent $\approx 32' \times 10'$ ($\approx 1.08 \times 0.34$ Mpc²) and the low-frequency flux density $S_{400 \text{ MHz}} = 0.98 \pm 0.06$ Jy. This extended radio relic shows diffuse emission with a central ridge, a bridge of emission connected with the narrow-angle-tailed galaxy NGC 4789, which suggests that this tailed radio galaxy could be the source of the seed particles feeding the radio relic, 1253+275 (see also Giovannini et al. 1991; Bonafede et al. 2021, 2022).
12. The uGMRT observations show a long, broad tail of radio emission ($\approx 2.5' = 70$ kpc; see Figure 13) co-spatial with the X-ray slingshot tail of the wide-angle radio galaxy NGC 4839. The X-ray and radio tails extend to the southwest, away from the Coma core. The detailed surface brightness of the radio tail appears to match that in the X-ray, e.g., a spine of emission extends along the southeast side of the tail. Spectral steepening between the compact inner lobes and the outer tailed radio structures is observed.

We thank the anonymous referee for his/her comments that improved this paper. D.V.L. acknowledges the support of the Department of Atomic Energy, Government of India, under project No. 12-R&D-TFR-5.02-0700. W.F. and C.J. acknowledge support from the Smithsonian Institution, the Chandra High Resolution Camera Project through NASA contract NAS8-03060, and NASA grants 80NSSC19K0116, GO1-22132X, and GO9-20109X. N.L. acknowledges partial support by the RSF grant 19-12-00369. R.J.vW and I.D.R. acknowledge support from the ERC Starting Grant ClusterWeb 804208. We thank the staff of the GMRT who made these observations possible. The GMRT is run by the National Centre for Radio Astrophysics of the Tata Institute of Fundamental Research. This research has made use of NED, which is operated by the Jet Propulsion Laboratory, Caltech, under contract with NASA, and NASA's Astrophysics Data System. This research has made use of the NASA/IPAC Infrared Science Archive, which is funded by NASA and operated by the California Institute of

Technology. This research has made extensive use of SAO-Image DS9, in addition to software provided by the CXC in the application packages CIAO.

Facilities: GMRT, Chandra, Sloan Digital Sky Survey.

Software: AIPS (van Moorsel et al. 1996), CASA (McMullin et al. 2007), DS9 (Joye & Mandel 2003), Astropy (Robitaille et al. 2013).

Appendix A Extended Radio Sources and RPS Galaxies

In Tables 3 and 4, we list 24 extended ($\gtrsim 12.6$ kpc) radio sources and 20 RPS galaxies, respectively, that are confirmed members of the Coma cluster, ordered in increasing R.A. The radio images of these extended cluster-member radio sources and RPS galaxies are presented in Figures 3 and 5, in the order listed in Tables 3 and 4, respectively. The radio contours, in magenta and blue, correspond, respectively, to the 250–500 MHz and the 550–850 MHz band images that are overlaid on the grayscale SDSS (DR12) *r*-band image.

A.1. Notes on the Radio Morphology of Individual Extended Sources

Descriptions of the radio morphologies and their optical properties of these extended sources along with notes from the literature are given below.

1: *2MASX J12520684+2701352*—(a.k.a. KUG 1249+272B) An emission-line galaxy (Kent & Gunn 1982). The radio morphologies in the 250–500 MHz and the 550–850 MHz bands are amorphous. The low-frequency, 250–500 MHz image has a larger extent as compared to the 550–850 MHz image, probably due to synchrotron cooling. The largest projected linear extent of the source in the 250–500 MHz band is $0'.45$ (≈ 12.6 kpc). The integrated spectral index is very steep, $\alpha(400\text{--}700 \text{ MHz}) = -1.23 \pm 0.13$.

2: *NGC 4789*—The optical host is type SA0 (Kent & Gunn 1982). The radio morphologies at both bands show the source to be a narrow-angle-tailed radio galaxy. We barely detect the extended source, 1253+275 in our high-angular resolution image (see Figure 1). Instead, the tailed radio source at the southwest is seen clearly in our low-resolution image (Figure 12). The largest projected linear extent of the NGC 4789 galaxy in the 250–500 MHz band image (Figure 3) is $7'.37$ (≈ 206.5 kpc). The host galaxy ($D_{25} = 114''.3$) and the tail have a spectral index, $\alpha(400\text{--}700 \text{ MHz})$, -0.46 ± 0.02 , and -0.51 ± 0.03 , respectively. The integrated spectral index is flat, $\alpha(400\text{--}700 \text{ MHz}) = -0.49 \pm 0.02$.

3: *Mrk 53*—(a.k.a. KUG 1253+279) The optical host is Sa with a bright knot to the south (Kent & Gunn 1982). The radio emission at both 250–500 MHz and 550–850 MHz bands is one-sided showing asymmetric tails toward the northwest, extending beyond the optical host galaxy. The largest projected linear extent of the source in the 250–500 MHz band is $1'.23$ (≈ 34.5 kpc). The host galaxy ($D_{25} = 19''.0$) and the tail have a spectral index, $\alpha(400\text{--}700 \text{ MHz})$, -0.64 ± 0.03 and -0.43 ± 0.04 , respectively. The integrated spectral index is flat, $\alpha(400\text{--}700 \text{ MHz}) = -0.75 \pm 0.07$.

4: *NGC 4827*—The optical host is S0 and is a low-ionization nuclear emission-line region galaxy (Kent & Gunn 1982). The radio morphology at both bands, 250–500 MHz and 550–850 MHz, is nearly identical. The north and south radio lobes show a disturbed morphology, extending toward the east,

suggesting that the motion of the host galaxy in the ICM is possibly responsible for these extensions. Furthermore, the northern jet is of smaller extent than the southern radio jet, suggesting that projection effects are also at play. The largest projected linear extent of the source in the 250–500 MHz band is $4'.66$ (≈ 130.6 kpc). The host galaxy ($D_{25} = 86''.7$) and the mean of the northern and southern tails (or radio lobes) have a spectral index, $\alpha(400\text{--}700\text{ MHz})$, -0.11 ± 0.01 and -0.39 ± 0.02 , respectively. The integrated spectral index is flat, $\alpha(400\text{--}700\text{ MHz}) = -0.49 \pm 0.01$.

5: *NGC 4839*—The optical host is an SA0, a low/average surface brightness disk-dominated galaxy (Oemler 1976), and is the BCG of the NGC 4839 group (Kent & Gunn 1982). It lies in the cluster outskirts (~ 1 Mpc in projection) southwest of the cluster center. X-ray observations of the Coma cluster have revealed a wealth of substructures and one of the most prominent is the infalling group of galaxies associated with the galaxy NGC 4839. The associated radio source has a wide-angle tailed morphology, i.e., the two-sided radio jet with slight distortions emerging in P.A. $\approx 0^\circ$ with a bow-shock-like feature with indications of ram pressure stripping, which suggests that the NGC 4839 group is falling into the Coma cluster (Neumann et al. 2001). The high-resolution image, along with the low-angular resolution image of the source in the 250–500 MHz band (see Figure 13), suggests there are two finger-like features emanating toward the southwest. These images also suggest that there is low-surface brightness diffuse radio emission toward the west, which trails behind the wide-angle-tailed radio galaxy. The largest projected linear extent of the source in the 250–500 MHz band is $2'.47$ (≈ 69.2 kpc).

6: *Mrk 55*—(a.k.a. KUG 1254+276) The optical host is Sa with no signs of interaction and is classified as a star-forming galaxy showing signatures of low-ionization nuclear emission-line region galaxy (Kent & Gunn 1982; Miller & Owen 2002). The radio morphology shows emission associated with the optical host and two additional knot-like (lobes) emission aligned along the east-west. There is also very low-surface brightness diffuse radio emission detected at 250–500 MHz. Although the radio morphology at the 550–850 MHz band is identical to the 250–500 MHz band, it has smaller extent with no extended very low-surface brightness diffuse radio emission. The largest projected linear extent of the source in the 250–500 MHz band is $0'.57$ (≈ 16.0 kpc).

7 (c): *KUG 1255+283*—(a.k.a. (GMP 4555, MCG +05–31–035) The elliptical optical host is Sb and there are possibly two overlapping galaxies with their nuclei $\sim 3''$ apart (Bothun & Dressler 1986). The radio emission at both bands, 250–500 MHz and 550–850 MHz, is one-sided, showing asymmetric tails toward the west, extending ~ 19.9 kpc beyond the optical host galaxy. The radio extent in the 550–850 MHz band image is smaller than in the 250–500 MHz band image. The source is also classified as an RPS galaxy (Chen et al. 2020, see Section 4). The largest projected linear extent of the source in the 250–500 MHz is $0'.67$ (≈ 18.8 kpc). The source has a flat integrated spectral index, $\alpha(400\text{--}700\text{ MHz}) = -0.45 \pm 0.08$, which is consistent with $S_{1.4\text{GHz}} = 6.76 \pm 0.08$ mJy, within uncertainties (Chen et al. 2020).

8 (d): *NGC 4848*—The optical host is a blue disk Scd that shows perturbed gas distributions with most of the neutral hydrogen in the north and a high HI gas deficiency (Gavazzi 1989). The radio emission at both bands, 250–500 MHz and 550–850 MHz, is one-sided with asymmetric tails toward the

northwest, extending beyond the optical host galaxy. The 550–850 MHz image shows smaller extent than the 250–500 MHz image. The source is classified as an AGN (Kent & Gunn 1982), and is listed as an RPS galaxy by (Chen et al. 2020, see Section 4). The largest projected linear extent of the source at 250–500 MHz band is $1'.23$ (≈ 34.5 kpc). The integrated spectral index is $\alpha(400\text{--}700\text{ MHz}) = -0.60 \pm 0.07$, which agrees with $S_{1.4\text{GHz}} = 23.85 \pm 0.11$ mJy, within uncertainties (Chen et al. 2020).

9: *2MASX J12581865+2718387*—(a.k.a. KUG 1255+275) The optical host is an irregular galaxy showing emission lines. More specifically, it is a HI-rich galaxy with regular gas distribution (Kent & Gunn 1982; Gavazzi 1989). The radio emission at both bands, 250–500 MHz and 550–850 MHz, is one-sided, showing asymmetric tails toward the southeast, extending beyond the optical host galaxy with the 550–850 MHz image showing smaller extent than the 250–500 MHz image. The largest projected linear extent of the source in the 250–500 MHz band is $0'.71$ (≈ 19.9 kpc). The integrated spectral index is very flat, $\alpha(400\text{--}700\text{ MHz}) = -0.22 \pm 0.10$.

10: *Mrk 56*—(KUG 1256+275) The optical host is an S0 with emission lines (Mazzarella & Balzano 1986). The radio emission at both bands, 250–500 MHz and 550–850 MHz, is one-sided showing asymmetric tails toward the northwest, extending beyond the optical host galaxy. The 550–850 MHz image shows a smaller extent than the 250–500 MHz image. The largest projected linear extent of the source in the 250–500 MHz band is $1'.21$ (≈ 33.9 kpc). The integrated spectral index is very flat, $\alpha(400\text{--}700\text{ MHz}) = -0.11 \pm 0.08$.

11: *Mrk 57*—The optical host is an irregular H II galaxy with emission lines (Kent & Gunn 1982). It is HI-rich with a HI distribution displaying an extension to the north-south (Bravo-Alfaro et al. 2000). The radio emission at both bands, 250–500 MHz and 550–850 MHz, is one-sided, showing asymmetric tails toward the south, extending beyond the optical host galaxy with the 550–850 MHz image showing smaller extent than the 250–500 MHz image. The largest projected linear extent of the source in the 250–500 MHz band is $0'.90$ (≈ 25.2 kpc). The host galaxy ($D_{25} = 29''.25$) and the tail have a spectral index, $\alpha(400\text{--}700\text{ MHz})$, -0.57 ± 0.03 and -1.12 ± 0.05 , respectively.

12 (h): *IC 3949*—(a.k.a. KUG 1256+281) The optical host is SA0, an edge-on spiral galaxy and the radio emission is dominated by star formation in its disk with a more quiescent central bulge (Bothun & Dressler 1986). The source is classified as an AGN by Kent & Gunn (1982) and it is also classified as the RPS galaxy (Chen et al. 2020, see Section 4). The radio emission at both 250–500 MHz and 550–850 MHz is one-sided. Only the 250–500 MHz image shows asymmetric tails toward the southwest, extending slightly beyond the optical host galaxy, whereas the 550–850 MHz image has smaller extent and is coincident with the extent of the optical host. The largest projected linear extent of the source in the 250–500 MHz is $0'.50$ (≈ 14.0 kpc). The integrated spectral index is $\alpha(400\text{--}700\text{ MHz}) = -0.61 \pm 0.10$, and agrees with $S_{1.4\text{GHz}} = 2.37 \pm 0.09$ mJy, within uncertainties (Chen et al. 2020).

13 (i): *NGC 4858*—The optical host is an Sb showing interaction with NGC 4860 (at $z = 0.02645$), which is located to the northeast (Bothun & Dressler 1986). The radio emission at both bands, 250–500 MHz and 550–850 MHz, is one-sided, showing asymmetric tails toward the northwest, extending

beyond the optical host galaxy with the 550–850 MHz image showing smaller extent than the 250–500 MHz image. The source is also classified as the RPS galaxy (Chen et al. 2020, see Section 4). The largest projected linear extent of the source in the 250–500 MHz band is 0′.79 (≈ 22.1 kpc). The integrated spectral index is steep, $\alpha(400\text{--}700 \text{ MHz}) = -1.07 \pm 0.10$, and it agrees with $S_{1.4\text{GHz}} = 8.73 \pm 0.13$ mJy, within uncertainties (Chen et al. 2020).

14 (j): *Mrk 58*—(a.k.a. KUG 1256+279) The optical host is a blue disk Sa galaxy (Kent & Gunn 1982). It shows a very asymmetric gas distribution; most of the H I gas lies to the west side, while the east appears depleted (Mazzarella & Balzano 1986). The radio emission at both bands, 250–500 MHz and 550–850 MHz, is one-sided showing asymmetric tails toward the southwest, extending beyond the optical host galaxy with the 550–850 MHz image showing smaller extent than the 250–500 MHz image. The source is also classified as RPS galaxy (Chen et al. 2020, see Section 4). The largest projected linear extent of the source in the 250–500 MHz band is 0′.74 (≈ 20.7 kpc). The integrated spectral index is $\alpha(400\text{--}700 \text{ MHz}) = -0.76 \pm 0.11$, and it agrees with $S_{1.4\text{GHz}} = 3.29 \pm 0.15$ mJy, within uncertainties (Chen et al. 2020).

15: *NGC 4869*—A narrow-angle-tailed radio galaxy is hosted by an elliptical galaxy (Venturi et al. 1990). The radio morphology at both bands 250–500 MHz and 550–850 MHz, is typical of a head-tail radio source with a weak unresolved radio core, two oppositely directed radio jets, and a long–low-surface brightness tail, pointing away from the cluster center. The radio tail has a conical shape, which initially expands and then recollimates. The radio jet at $\sim 3'.5$ (≈ 96.1 kpc) bends by $\sim 70^\circ$ with respect to the initial direction of propagation, after the two radio jets have undergone a twist and wrap of the two tails. A detailed study of the radio source is presented in Lal (2020b); Feretti et al. (1990). The largest projected linear extent of the source in the 250–500 MHz band is 6′.63 (≈ 185.8 kpc). The host galaxy ($D_{25} = 51''.24$) and the tail have spectral index, $\alpha(400\text{--}700 \text{ MHz})$, -0.62 ± 0.01 and -1.70 ± 0.02 , respectively. The integrated spectral index is steep, $\alpha(400\text{--}700 \text{ MHz}) = -1.12 \pm 0.01$.

16: *NGC 4874*—One of the two dominant BCGs of the Coma cluster (Baier et al. 1990) is a low-ionization nuclear emission-line region galaxy (Kent & Gunn 1982). The optical host is a regular low brightness elliptical galaxy (Capetti et al. 2000). Unlike many relaxed clusters that host a single BCG, Coma has two very bright galaxies in the core—NGC 4889 and NGC 4874. While the former is brighter by ~ 0.5 magnitude, the latter is rounder and possesses a rich system of satellite galaxies. NGC 4874 is also a prominent radio galaxy, which is yet another characteristic feature of giant ellipticals residing at the bottom of cluster potential wells (Burns 1990). The source is located close to the peak of the distributions of galaxies and X-ray gas. The radio source has a wide-angle tail (WAT) radio morphology and its projected maximum angular extension is $\sim 30''$, corresponding to ~ 15 kpc. We detect the radio core and two radio jets forming a wide angle between them in both of our 250–500 MHz and 550–850 MHz band images. The largest projected linear extent of the source in the 250–500 MHz band is 0′.81 (≈ 22.7 kpc).

This one of two core BCGs of the Coma cluster, NGC 4874 also retains its central X-ray gas corona, i.e., the interstellar gas with a temperature of 1–2 keV is confined by the hot intergalactic medium of the Coma Cluster into a compact

(≈ 3 kpc) cloud. The radio jets are found to be anti-correlated with the X-ray emission, and there are also small X-ray indentations of the nucleus, where the jets leave the coronal gas (see also Section 5). It seems that the supermassive black hole in NGC 4874 is depositing its energy outside of the corona, and it may be ineffective in preventing the cooling taking place (Vikhlinin et al. 2001; Sanders et al. 2014).

17: *2MASX J12594009+2837507*—(a.k.a. KUG 1257+288B) The optical host is Sc type (Kent & Gunn 1982). The 250–500 MHz band image suggests that the source has a wide-angle tail morphology, whose radio emission extends much beyond the extent of the host galaxy. The largest projected linear extent of the source in the 250–500 MHz band is 0′.72 (≈ 20.2 kpc). The source was not covered in the 550–850 MHz band pointings.

18: *2MASX J13001780+2723152*—(a.k.a. KUG 1257+276) The optical host is an irregular face-on spiral galaxy (Kent & Gunn 1982). The 250–500 MHz band image suggests that the radio source emerges from the host galaxy and has two radio lobes, one just northeast of the radio core and the other east. Both radio lobes have similar surface brightnesses, and the radio core is offset from the two symmetrical radio lobes. The largest projected linear extent of the source in the 250–500 MHz band is 1′.79 (≈ 50.2 kpc). The source was not covered in the 550–850 MHz band pointings.

19 (q): *KUG 1258+279A*—The optical host shows emission lines of Sa type and is an asymmetrical blue disk galaxy possibly due to the presence of dust (Bothun & Dressler 1986). The radio emission at both bands, 250–500 MHz and 550–850 MHz, is one-sided showing asymmetric tails to the southeast, extending beyond the optical host galaxy with the 550–850 MHz band image showing smaller extent than the 250–500 MHz band image. The source is also classified as an RPS galaxy (Chen et al. 2020, see Section 4). The largest projected linear extent of the source in the 250–500 MHz band is 1′.01 (≈ 28.3 kpc). The host galaxy ($D_{25} = 39''.24$) and the tail have spectral index, $\alpha(400\text{--}700 \text{ MHz})$, -0.39 ± 0.07 and -0.56 ± 0.12 , respectively. The integrated spectral index is $\alpha(400\text{--}700 \text{ MHz}) = -0.74 \pm 0.11$, and it agrees with $S_{1.4\text{GHz}} = 3.70 \pm 0.09$ mJy, within uncertainties (Chen et al. 2020).

20 (r): *IC 4040*—(a.k.a. GMP 2559, KUG 1258+283, CGCG 160–252) The optical host shows emission lines hosted by a galaxy of spiral or irregular morphological type (Kent & Gunn 1982). The radio emission at both bands, 250–500 MHz and 550–850 MHz, is one-sided showing asymmetric tails toward the southeast, extending beyond the optical host galaxy, with the 550–850 MHz band image showing smaller extent than the 250–500 MHz band image. The source is also classified as an RPS galaxy (Chen et al. 2020, see Section 4). The largest projected linear extent of the source in the 250–500 MHz band is 2′.18 (≈ 61.1 kpc). The integrated spectral index is steep, $\alpha(400\text{--}700 \text{ MHz}) = -1.05 \pm 0.05$, and it agrees with $S_{1.4\text{GHz}} = 16.31 \pm 0.10$ mJy, within uncertainties (Chen et al. 2020).

21: *2MASX J13004067+2831116*—(a.k.a. KUG 1258+287) The optical host is an edge-on spiral galaxy (Kent & Gunn 1982). The 250–500 MHz band image suggests that the source has tailed morphology, whose radio emission extends much beyond the extent of the host galaxy. The largest projected linear extent of the source in the 250–500 MHz band is 0′.96 (≈ 26.9 kpc). The source was not covered in the 550–850 MHz band pointings.

22: *2MASX J13004385+2824586*—The optical host is an elliptical galaxy (Kent & Gunn 1982). The radio morphology in both bands, 250–500 MHz and 550–850 MHz, is nearly identical. The two jets traveling toward north and south show knotty features. In addition, the north and south radio lobes show disturbed morphologies, which are bent toward the east, suggesting that the motion of the host galaxy in the ICM is possibly responsible for these extensions. Furthermore, the northern jet is of larger extent than the southern radio jet, and the southern jet is also more bent, suggesting that projection effects are likely at play. The largest projected linear extent of the source in the 250–500 MHz band is $1'.85$ (≈ 51.8 kpc). The host galaxy ($D_{25} = 86''.7$) and the tail have spectral indices, α (400–700 MHz), -0.53 ± 0.04 , and -0.83 ± 0.05 , respectively. The integrated spectral index is steep, $\alpha(400\text{--}700 \text{ MHz}) = -1.17 \pm 0.04$.

23 (s): *NGC 4911*—The optical host is a low-ionization nuclear emission-line region galaxy of Sb type. It is one of the two giant spirals in the Coma cluster showing a close interaction with its neighbor DRCG 27–62 (Kent & Gunn 1982; Miller & Owen 2002). The radio emission at both bands, 250–500 MHz and 550–850 MHz, is symmetrically surrounding the optical host, and radio emission in both bands are of identical extent. The source is also classified as an RPS galaxy (Chen et al. 2020, see Section 4). The source is nearly circular in shape, and the largest projected linear extent of the source in the 250–500 MHz band is $0'.73$ (≈ 20.5 kpc). The integrated spectral index is $\alpha(400\text{--}700 \text{ MHz}) = -0.98 \pm 0.04$, and it agrees with $S_{1.4\text{GHz}} = 15.08 \pm 0.23$ mJy, within uncertainties (Chen et al. 2020).

24: *NGC 4927*—The optical host is a very bright giant early spiral of type Sb (Kent & Gunn 1982) and is possibly interacting with its neighbor DRCG 27–62 (Bravo-Alfaro et al. 2000). The radio morphology shows emission associated with the optical host and two additional radio lobes along the northwest and southeast directions. Both radio lobes are of nearly identical surface brightnesses and are located just outside the optical host galaxy. The northern radio lobe shows slight extensions of radio emission toward the northeast, suggesting motion of the optical host with respect to the ICM is at play. The largest projected linear extent of the source in the 250–500 MHz band is $0'.66$ (≈ 18.5 kpc). The source was not covered in the 550–850 MHz band pointings.

A.1.1. Spectral Structure of Extended Sources

The spectral structure of the large ($\gtrsim 1'.85$) angular-sized sources, namely, NGC 4789, NGC 4827, NGC 4839, NGC 4869, and *2MASX J13004385+2824586* are elaborated further.

2: *NGC 4789*—The spectral structure of the classic wide-angle-tailed radio galaxy NGC 4789 is presented in Figure 4. The head, located close to the optical host, has a flat spectrum between 250–500 MHz and 550–850 MHz. The spectrum between these two bands gradually steepens with increasing distance from the head. In addition, we notice transverse spectral structure, a gradual steepening from southwest to northeast across the width of the radio tail, close to the head, before the jets bend toward the northwestern direction, possibly due to the ballistic motion of the host galaxy through a dynamic ICM. The faintest, and presumably oldest, far-end part of the tails have felt large-scale motions for the longest period of time, and hence, in the far-end part of the tails, we do not see transverse spectral structure. As discussed above, this wide-

angle-tailed radio galaxy is feeding the radio relic source, 1253+275. Unfortunately, the radio galaxy, Coma A causes uncertainties in the 550–850 MHz image. Thus our dynamic range limited map at 550–850 MHz band does not allow us to perform spectral imaging of this radio relic source (see also Section 5.4.1, “NGC 4789 and the 1253+275 relic” for a detailed discussion).

4: *NGC 4827*—The spectral structure of the classic FR II type radio galaxy, NGC 4827 shows a flat spectrum radio core and jets, which form relatively steeper spectrum radio lobes. The spectral information is similar in the two lobes and the lobes are filled with backflow material, which is older in the center than on the edges of the radio galaxy. The spectrum steepens from the outer regions toward the center of the source, and also steepens outwards, perpendicular to the major axis of the source, similar to the spectral structure of FR II radio galaxies. The radio lobes are not symmetric across the radio jet axis, i.e., the eastern extent is larger than the western extent, which is possibly due to the motion of the host galaxy. In the host galaxy ($D_{25} = 86''.7$), the northern and southern tails have spectral indices, $\alpha(400\text{--}700 \text{ MHz})$, -0.11 ± 0.01 , $-0.35 \pm 0.02\text{--}0.43 \pm 0.02$, respectively. The integrated spectral index is flat, $\alpha(400\text{--}700 \text{ MHz}) = -0.49 \pm 0.01$.

5: *NGC 4839*—The spectral structure of the BCG of the NGC 4839 group shows transverse spectral steepening, similar to NGC 4789, in addition to gradual spectral steepening from the flat spectrum radio core toward the northern and southern radio tails. The two finger-like features emanating toward the southwest have the steepest spectrum, which is comparable to the low-surface brightness diffuse emission toward the west, that trails behind the wide-angle-tailed radio galaxy. The integrated spectral index is $\alpha(400\text{--}700 \text{ MHz}) = -0.90 \pm 0.02$ (see also Section 5.4.1, paragraph “NGC 4839” for a detailed discussion).

15: *NGC 4869*—Lal (2020b) presented a detailed treatment of the head-tail radio galaxy, NGC 4869. Its radio spectrum shows progressive steepening with increasing distance from the head because of the effects of radiation losses. They also reported that the jet bends by $\sim 70^\circ$ with respect to the initial radio tail direction and there is a clear presence of a ridge, i.e., the flaring of a straight, collimated radio jet as it crosses a surface brightness edge. The low-frequency radio emission on either side of this surface brightness edge is remarkably different in spectral index, -1.21 ± 0.07 (inside) and -1.58 ± 0.11 (outside) using our 250–500 MHz and 550–850 MHz band images (see Figure 4).

22: *2MASX J13004385+2824586*—The spectral structure shows spectral steepening from the radio core along the north and south jets and radio lobes. There are occasional departures from this simple picture of gradual spectral steepening at the locations of jet knots, which are the sites of re-acceleration. The integrated spectral index is steep, $\alpha(400\text{--}700 \text{ MHz}) = -1.17 \pm 0.04$.

A.2. Notes on Radio Morphology of Remaining RPS Galaxies

(b): *GMP 4570*—The radio emission peaks at the location of the host galaxy and extends toward the west, beyond the extent of the optical host, suggesting it is a tailed radio morphology source. The largest projected linear extent of the source in the 250–500 MHz band is ≈ 7.0 kpc. The source was not covered in our 550–850 MHz band pointings. It was detected in the measurement at 1.4 GHz (see Table 4, Chen et al. 2020). Thus, the integrated spectral index is $\alpha(400\text{--}1400 \text{ MHz}) = -0.51 \pm$

0.11, which agrees, within uncertainties with the upper limit, $\alpha(400\text{--}700\text{ MHz}) \lesssim -0.98 \pm 0.52$.

(*e*): *NGC 4853*—(a.k.a. GMP 4156) The 250–500 MHz band image shows slight extensions in radio emission toward the north, beyond the extent of the optical host, whereas, the extent in the 550–250 MHz image is similar to the extent of the optical host. The largest projected linear extent of the source in the 250–500 MHz band is ≈ 7.3 kpc. The integrated spectral index is $\alpha(400\text{--}700\text{ MHz}) = -0.77 \pm 0.12$, which agrees, within uncertainties with the measurement at 1.4 GHz (see Table 4, Chen et al. 2020).

(*k*): *KUG 1257+278*—(a.k.a. GMP 3271) Both the 250–500 MHz and 550–250 MHz band images show extensions in radio emission toward the east, much beyond the extent of the optical host. The largest projected linear extent of the source in the 250–500 MHz band is ≈ 10.6 kpc. The integrated spectral index is $\alpha(400\text{--}700\text{ MHz}) = -0.86 \pm 0.29$, which agrees, within uncertainties with the measurement at 1.4 GHz (see Table 4, Chen et al. 2020).

(*o*): *Mrk 60*—(a.k.a. D100, GMP 2910) Both, the 250–500 MHz and 550–250 MHz band images show extensions in radio emission toward the northeast, beyond the extent of the optical host. The 250–500 MHz band image also shows diffuse extensions toward the north, providing it an amorphous-like radio morphology, though the 550–250 MHz band image suggests it has a tailed radio morphology. The largest projected linear extent of the source in the 250–500 MHz band is ≈ 11.5 kpc. The integrated spectral index is $\alpha(400\text{--}700\text{ MHz}) = -0.93 \pm 0.46$, which agrees, within uncertainties with the measurement at 1.4 GHz (see Table 4, Chen et al. 2020).

(*t*): *NGC 4921*—(a.k.a. GMP 2059) The 250–500 MHz band image suggests it is an irregular-shaped radio morphology source. The largest projected linear extent of the source in the 250–500 MHz band is ≈ 13.2 kpc. We do not detect it in our 550–250 MHz band image, but the source was detected in the measurement at 1.4 GHz (see Table 4, Chen et al. 2020). Thus, the integrated spectral index is $\alpha(400\text{--}1400\text{ MHz}) = -1.16 \pm 0.22$, which agrees, within uncertainties with the upper limit, $\alpha(400\text{--}700\text{ MHz}) \lesssim -1.90 \pm 0.58$.

Appendix B

Extended Radio Sources: Either with Foreground/ Background Galaxies or without Redshift Data

Table A1 lists the remaining 111 extended sources, labeled in Figure A1 that are either foreground/background galaxies or do not have redshift data. The radio images of these extended radio sources are presented in Figure A2, in the order presented in Table A1. The columns in Table A1 are as follows: (1) source name; (2–3) probable radio core position, R.A., and decl. (J2000) at the 250–500 MHz; (4) redshift as reported in NED; (5–6) local RMS noise in the near vicinity of the source for the 250–500 MHz and 550–850 MHz images; (7) the radio morphology of the sources shown in the maps presented; and (8) alternate name. The source_ID as tabulated in Table A1 is labeled in the upper-right corner of each image in Figure A2. The radio contours in magenta and blue correspond, respectively, to the 250–500 MHz and 550–850 MHz band images that are overlaid on the grayscale SDSS (DR12) *r*-band image. We adopt the definitions of Rudnick (2021) for the classification of radio sources.

Table A1
Summary of the Nature of Radio Sources in the Coma Cluster Field Using the uGMRT

Source_ID	Radio Core Position		z	RMS		Radio Morphology	Alternate Name(s)	
	R.A. (400 MHz) Decl.			B-3	B-4			
	(J2000)							$(\mu\text{Jy beam}^{-1})$
(1)	(2)	(3)	(4)	(5)	(6)	(7)	(8)	
1		12:51:14.19	+26:54:40.5		24		A, D	
2		12:51:32.67	+26:42:30.3		96		CD, FR II	
3	WISEA J125201.62+265126.7	12:52:00.51	+26:51:25.1	0.40942	48		Tr	
4		12:52:10.94	+26:59:50.7		18		D, Tr	
5	WISEA J125211.65+265649.1	12:52:11.64	+26:56:51.6	0.90399	24		CD	
6	WISEA J125245.04+270920.3	12:52:45.10	+27:09:20.6	0.60126	24	12	Tr	
7		12:52:54.36	+27:32:03.5		24	24	CD, FR II	
8	WISEA J125302.24+262722.3	12:53:02.23	+26:27:21.9	1.26153	96		CD, FR II	
9		12:53:06.86	+27:46:08.3		192	96	FD, FR II	
10		12:53:13.02	+27:16:00.9		24	24	CD, FR II	
11		12:53:29.57	+27:04:45.5		48	56	Tr	
12		12:53:29.94	+27:36:48.3		48	36	A, D	
13	WISEA J125332.57+270050.0	12:53:31.64	+27:00:59.3	2.04431	24	12	CD, FR II	
14		12:53:52.46	+26:43:02.0		24	12	Tr, FR II	
15	WISEA J125405.51+263028.2	12:54:07.09	+26:30:14.1	0.16842	192	96	CD, FR II	
16	Coma A	12:54:12.01	+27:37:34.0	0.08534	768	384	FD, FR II	3C 277.3, 4C +27.22
17		12:54:12.26	+26:46:24.7		24	12	BT	
18	WISEA J125413.96+264153.8	12:54:11.78	+26:42:14.4	0.00007	24	12	A	
19	SDSS J125416.43+271556.4	12:54:16.42	+27:15:56.1	0.29825	36	18	HT, WAT	
20	WISEA J125432.27+263453.4	12:54:34.33	+26:35:43.7		36	18	D, Tr	
21		12:54:50.88	+27:56:31.3		48	48	CD	
22	WISEA J125458.24+271513.5	12:54:58.21	+27:15:12.8	0.25733	36	18	A, D	
23	WISEA J125501.22+270222.8	12:55:02.00	+27:02:23.8	0.45838	24	12	HT, WAT	
24	5C 04.025 [†]	12:55:03.50	+27:54:13.7	0.40920	48	48	CD, FR II	
25		12:55:10.55	+27:35:43.1		36	48	CD	
26		12:55:12.70	+26:59:21.7		24	18	A	
27	WISEA J125520.65+271408.1*	12:55:20.62	+27:14:09.1	1.76500	36	24	CD, FR II	
28	WISEA J125519.16+272305.3	12:55:21.03	+27:22:31.4		24	36	CD, FR II	
29	SDSS J125523.89+265640.9	12:55:24.72	+26:56:40.2	0.43852	24	24	BT	
30	MCG +05-31-007	12:55:25.05	+27:47:53.0		36	48	CD, FR II	
31	AGC 228097	12:55:25.70	+26:51:04.6		24	12	CD, FR II	LEDA 5060293
32		12:55:26.75	+26:21:28.1		48	12	CD, FR II	
33	SDSS J125526.52+273804.7*	12:55:27.62	+27:38:07.8	0.10645	24	24	BT	
34	WISEA J125537.60+262540.4	12:55:36.80	+26:25:45.7	0.42347	36	12	A, D	
35		12:55:37.21	+26:29:10.3		24	12	CD	
36		12:55:46.32	+27:08:30.2		24	12	A, D	
37		12:55:46.72	+27:03:51.0		24	18	CD	
38		12:55:48.22	+27:17:02.4		24	18	CD, FR II	
39		12:55:55.48	+27:41:27.2		96	96	A, D	
40	SDSS J125556.79+270957.1	12:55:56.26	+27:09:58.7	0.53605	24	12	A, D	
41	WISEA J125601.82+274525.3*	12:56:00.96	+27:45:15.3	2.05500	24	24	A, D	
42		12:56:01.81	+27:32:05.3		24	12	CD	
43	WISEA J12560986+2750393	12:56:09.86	+27:50:39.3		24	48	CD	
44		12:56:19.34	+28:10:41.4		48		CD	
45	WISEA J125619.70+271940.2*	12:56:19.49	+27:19:33.9	0.07003	24	12	BT, CD	
46		12:56:24.40	+27:02:36.1		24	48	W	
47		12:56:38.25	+27:29:02.7		24	12	Z	
48		12:56:50.38	+26:43:53.4		48	18	CD	
49		12:56:52.88	+26:39:43.0		48	48	CD	
50	WISEA J125657.08+264742.6	12:56:57.08	+26:47:43.1	0.63894	24	18	A, D	
51	WISEA J125708.10+274853.4*	12:57:06.17	+27:49:03.9	0.23997	24	12	Tr, D	
52		12:57:08.06	+27:52:51.9		24	12	BT, FR I	
53		12:57:25.97	+27:44:40.3		24	12	CD, Tr	
54		12:57:28.95	+27:56:31.3		18		CD	
55	WISEA J125740.06+282701.9	12:57:40.00	+28:27:00.5	0.41283	24		BT	
56	SDSS J125739.29+282012.3	12:57:40.29	+28:20:25.0	0.55437	36		CD	
57	WISEA J125752.93+280609.4	12:57:52.76	+28:06:07.6	0.45360	48	48	CD	
58		12:57:54.73	+26:59:10.0		24	12	BT, FR II	
59	SDSS J125803.78+275601.7	12:58:03.31	+27:56:11.0	0.26110	24	24	Tr	
60	WISEA J125801.49+273006.0	12:58:04.45	+27:30:45.3		24	12	Tr, FR II	

Table A1
(Continued)

Source_ID	Radio Core Position		z	RMS		Radio Morphology	Alternate Name(s)	
	R.A. (400 MHz) Decl.			B-3	B-4			
	(J2000)							$(\mu\text{Jy beam}^{-1})$
(1)	(2)	(3)	(4)	(5)	(6)	(7)	(8)	
61		12:58:04.51	+27:50:23.8		24	18	A, D	
62	WISEA J125812.36+273534.7*	12:58:12.33	+27:35:33.6	0.44673	24	24	CD, FR II	
63		12:58:21.50	+27:22:01.1		24	18	A, BT	
64	5C 04.064	12:58:21.69	+27:01:38.0		36	24	CD	
65	5C 04.065	12:58:23.12	+26:56:12.7		48	48	CD	7C 1255+2712
66		12:58:28.08	+27:00:43.4		24	18	CD	
67	WISEA J125829.96+275818.0*	12:58:29.97	+27:58:17.3	1.68500	24	12	Tr	
68	2MASX J12583190+2802587	12:58:31.91	+28:02:58.6		12	12	A, D	
69	WISEA J125838.15+274921.2	12:58:34.55	+27:49:17.2		24	12	Tr	
70		12:58:37.14	+28:27:55.0		24		A	
71	SDSS J125838.32+272258.2*	12:58:38.10	+27:23:03.6	1.39500	24	36	CD	
72	2MASX J12583860+2756356	12:58:38.44	+27:56:29.3	0.15680	12	12	A, D	
73	WISEA J125838.69+270047.6	12:58:40.54	+27:01:12.9		24	36	BT	
74	WISEA J125840.28+283425.5	12:58:40.75	+28:35:03.2		24		Tr	
75		12:58:41.87	+27:54:09.2		48	36	FD	
76	WISEA J125846.09+273009.2	12:58:46.01	+27:30:07.2	0.28481	24	24	WAT	
77		12:58:51.30	+26:49:40.9		36		Tr	
78	WISEA J125856.74+274057.7*	12:58:55.62	+27:41:05.4	0.28578	24	24	CD, FR II	
79		12:58:57.00	+27:25:41.0		24	48	CD	
80	WISEA J125859.32+274644.9	12:58:59.29	+27:46:44.3		96	24	Tr, FR II	
81	WISEA J125903.24+281200.2	12:59:03.24	+28:12:00.2		36	18	CD, FR II	
82	2MASX J12592846+2805078	12:59:28.46	+28:05:07.4	0.01241	18	12	CD	
83	5C 04.084	12:59:30.64	+27:01:45.2		36		A	C3B-217*
84		12:59:40.05	+28:44:33.0		24		CD	
85	WISEA J125945.22+272703.6	12:59:42.18	+27:27:20.8		24	24	CD	
86	WISEA J125945.22+272703.6	12:59:44.11	+27:26:41.7		24	24	CD	
87		12:59:49.41	+28:24:32.8		24	12	CD	
88	WISEA J130010.42+273540.9	13:00:13.91	+27:35:53.2		24	18	CD, FR II	
89	WISEA J130016.16+274838.8	13:00:15.10	+27:48:39.7	0.22373	24	12	CD, FR II	
90		13:00:24.60	+27:11:09.8		96		A, D	
91	WISEA J130024.14+280927.8	13:00:26.28	+28:09:23.4	2.17935	48	24	A, BT	5C 04.102
92	IC 4033	13:00:28.39	+27:58:20.7		18	12	A, D	
93	5C 04.104	13:00:30.36	+27:11:27.6		48		A	
94	WISEA J130032.97+272225.3	13:00:31.10	+27:22:37.0	0.72957	36		FD	
95	SSTSL2J130031.07+283300.0	13:00:31.43	+28:33:00.5	0.22103	24		Tr	
96	5C 04.114	13:00:50.92	+28:08:03.8		96	48	FD	
97	WISEA J130106.38+281813.0	13:01:06.35	+28:18:09.1	0.37339	24	36	CD, FR II	
98	WISEA J130114.14+272859.1	13:01:12.45	+27:28:35.5		18		CD	
99	WISEA J130113.14+281429.5	13:01:13.32	+28:14:27.6	0.28795	24	24	Z	
100		13:01:14.03	+27:51:41.7		18	18	CD	
101	WISEA J130121.84+280726.7	13:01:21.25	+28:07:22.6	2.26500	36	48	FD	
102		13:01:22.28	+27:58:50.9		24	18	Tr	
103	WISEA J130131.35+280334.8*	13:01:31.44	+28:03:35.9	0.58188	24	24	CD	
104		13:01:43.02	+27:48:11.6		24		CD	
105	2MASX J13015023+2753367	13:01:50.22	+27:53:36.9		12		A, D	
106	WISEA J130153.52+273604.3	13:01:52.32	+27:36:06.7	0.15856	12		CD	
107		13:01:58.86	+28:29:27.1		24		A, D	
108	WISEA J130220.42+275159.8	13:02:20.94	+27:52:10.7	0.25082	18		A, D	
109	WISEA J130232.28+280117.0	13:02:32.74	+28:01:19.0	0.16059	24		CD	
110	TT 50	13:02:41.52	+28:08:10.7	0.16446	36		HT, NAT	
111	NGC 4931	13:03:00.88	+28:01:56.9	0.01816	24		CD, BT	UGC 08154, CGCG 160-118

Note. Our interpretation of the radio morphologies for these extended radio sources in the Coma cluster field. Column 1: source name as identified in NED. Columns 2 and 3: the R.A. and decl. (J2000), in increasing R.A. The source position is given by the position of the probable radio core. Column 4: spectroscopic redshift; “*” depicts photometric redshift of the source. Columns 5 and 6: the local RMS noise in the near vicinity of source for 250–500 MHz (band 3) and 550–850 MHz (band 4). Column 7: the radio source morphology classification following Rudnick (2021): A = amorphous; BT = bend tail; HT = head tail; WAT = wide-angle tail; T = tailed source; CD = classical double; FR II: FR type II source; Tr: Triple; NAT: narrow-angle tailed; D: diffuse; W: winged (or X-shaped); and Z: Z symmetric. Column 8: alternate name(s), as reported in NED, “****”: Miller et al. (2009).

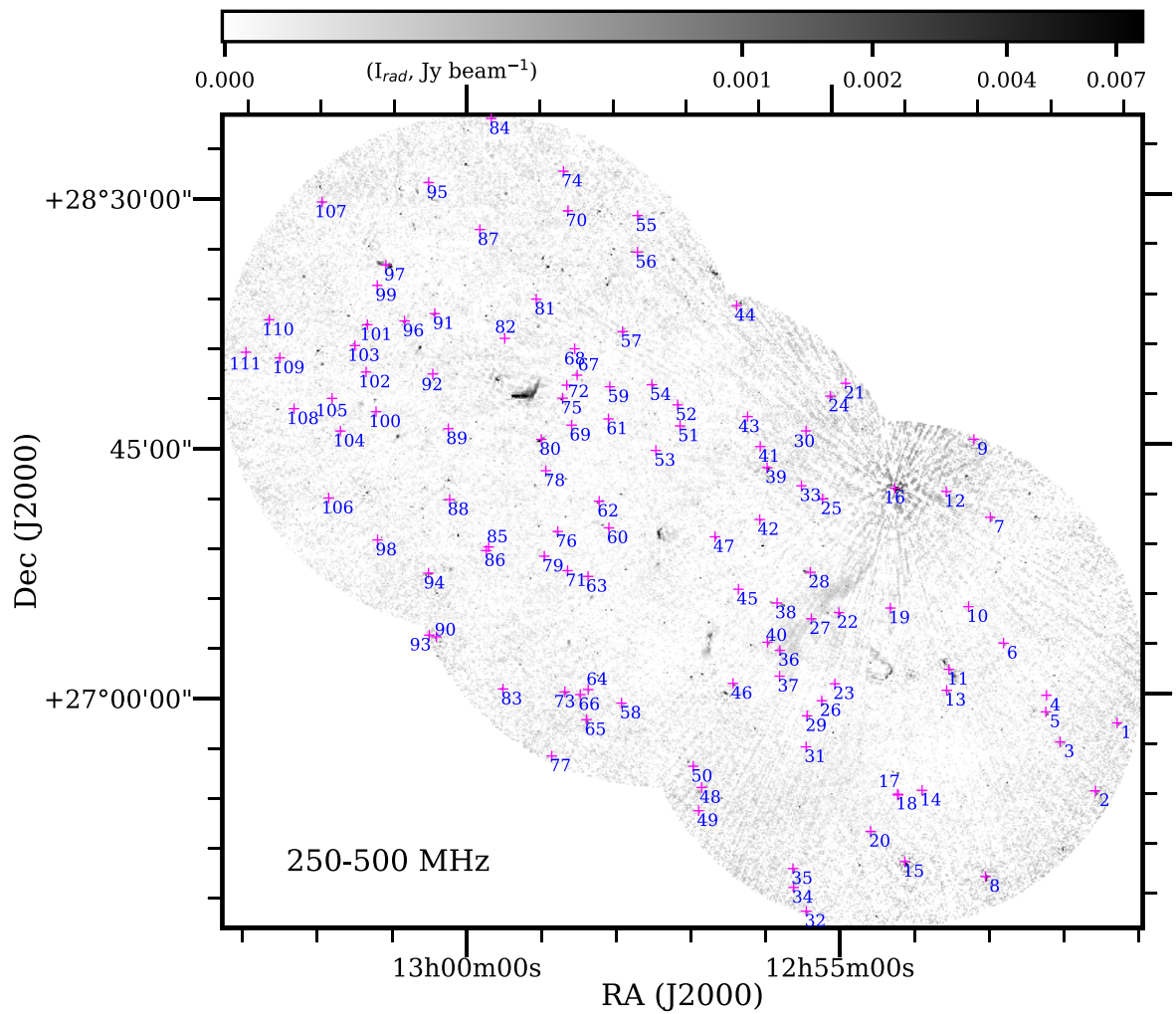


Figure A1. Mosaic image of three pointings at an angular resolution of $\sim 6''$ at the 250–500 MHz band of uGMRT, described in Table 2. The census of extended sources that are mapped in fields of view of the Coma cluster, listed in Table A1. The magenta points mark the radio positions and their sources_IDs are depicted in blue, adjacent to the extended sources. The grayscale image is displayed in logarithmic scales to emphasize the extended, low-surface brightness diffuse radio emission and radio emission associated with the radio galaxies.

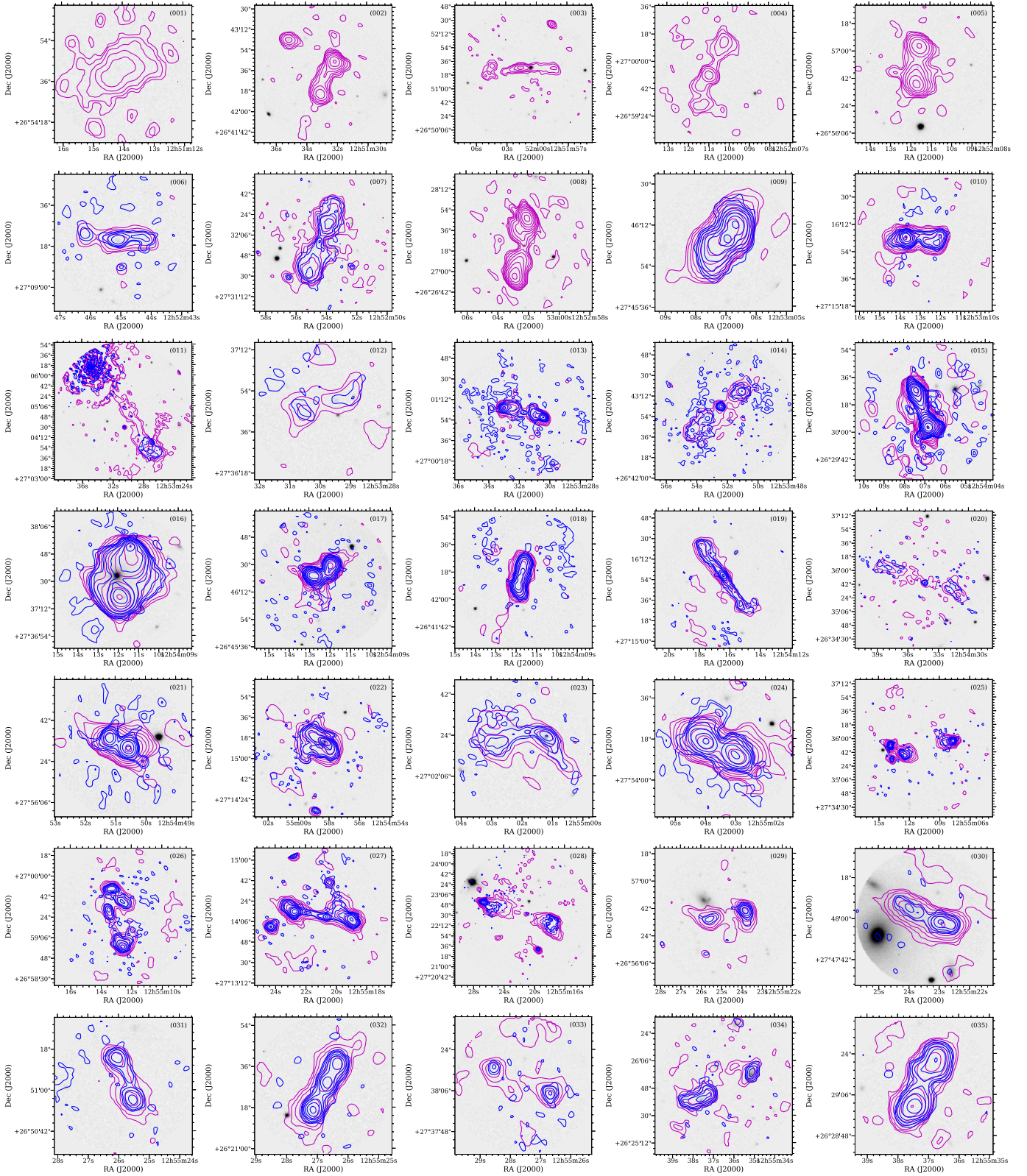


Figure A2. Images of extended (≈ 12.6 kpc) radio sources in the Coma cluster field that are either foreground/background galaxies or do not have redshift data. The source_ID as tabulated in Table A1 is labeled in the upper-right corner of each image. These radio sources are in the order presented in Table A1, from left to right and top to bottom. The magenta and blue color radio contours correspond to 250–500 MHz (band 3) and 550–850 MHz (band 4) at the angular resolutions of $6''$ and $3''$, respectively, of the uGMRT that are overlaid on the grayscale SDSS (DR12) r -band image. The lowest radio contour plotted is three times the local RMS noise and increasing by factors of 2. The local RMS noise is tabulated in Table A1 for the 250–500 MHz band (Column 5) and 550–850 MHz band (Column 6) of the uGMRT. The grayscale images are displayed in logarithmic scales to emphasize the optical hosts associated with the respective radio galaxies.

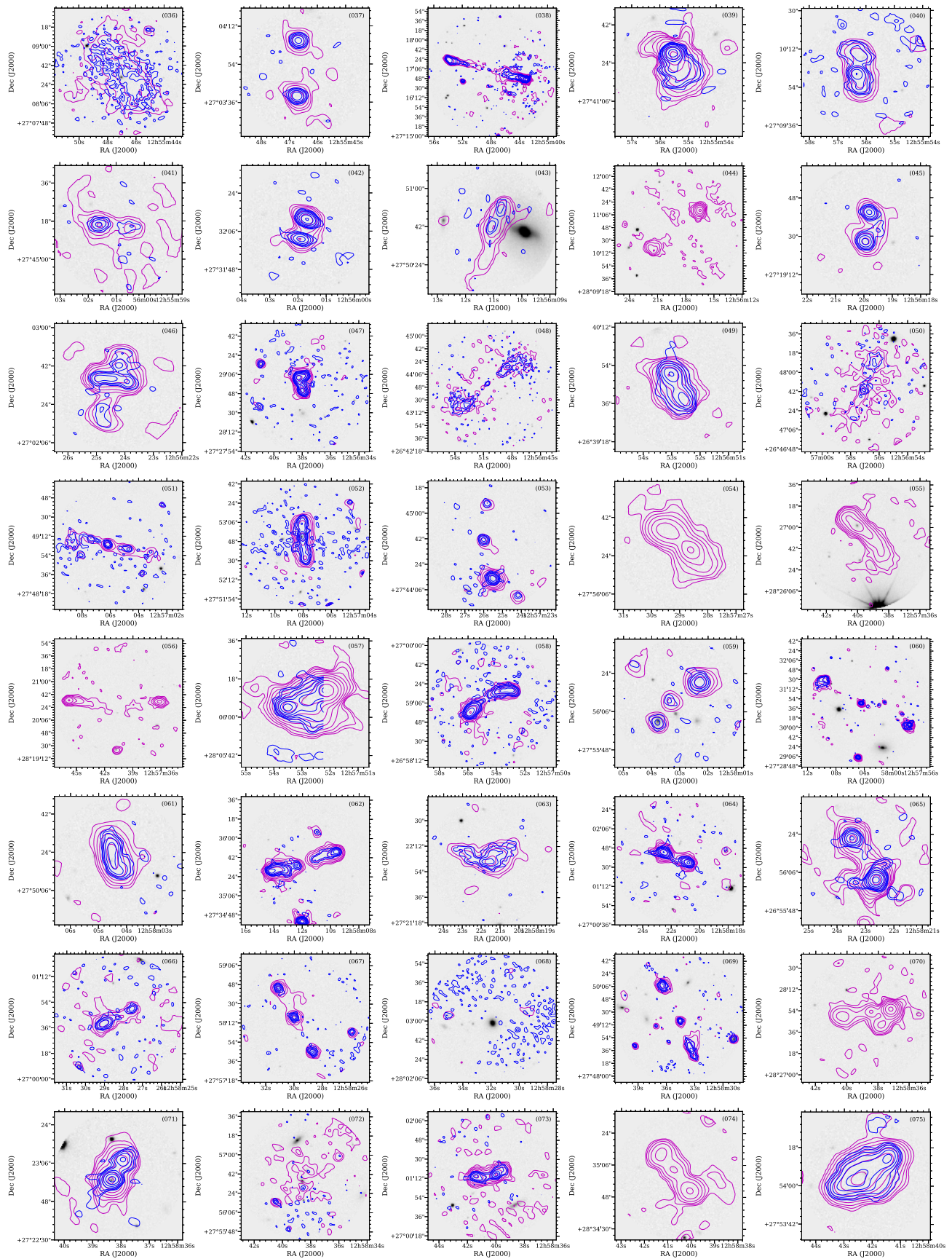


Figure A2. (Continued.)

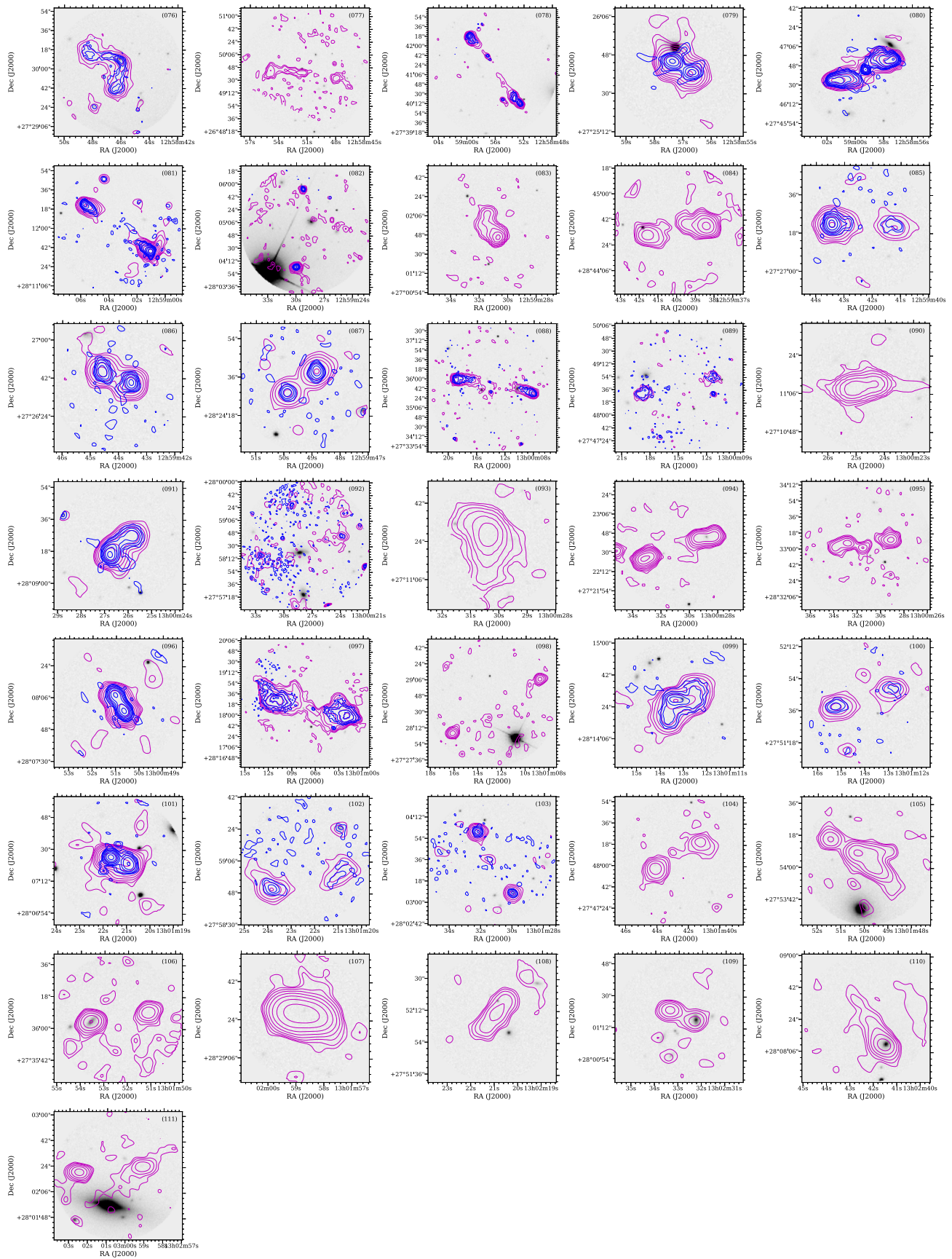

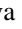






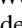

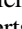
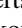

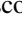
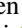


Figure A2. (Continued.)

ORCID iDs

D. V. Lal  <https://orcid.org/0000-0001-5470-305X>
 N. Lyskova  <https://orcid.org/0000-0003-4917-7803>
 C. Zhang  <https://orcid.org/0000-0001-5888-7052>
 T. Venturi  <https://orcid.org/0000-0002-8476-6307>
 W. R. Forman  <https://orcid.org/0000-0002-9478-1682>
 C. Jones  <https://orcid.org/0000-0003-2206-4243>
 E. M. Churazov  <https://orcid.org/0000-0002-0322-884X>
 R. J. van Weeren  <https://orcid.org/0000-0002-0587-1660>
 A. Bonafede  <https://orcid.org/0000-0002-5068-4581>
 N. A. Miller  <https://orcid.org/0000-0003-1076-7558>
 I. D. Roberts  <https://orcid.org/0000-0002-0692-0911>
 A. M. Bykov  <https://orcid.org/0000-0003-0037-2288>
 L. Di Mascolo  <https://orcid.org/0000-0003-3586-4485>
 M. Brüggen  <https://orcid.org/0000-0002-3369-7735>
 G. Brunetti  <https://orcid.org/0000-0003-4195-8613>

References

- Abell, G. O. 1958, *ApJS*, **3**, 211
 Abell, G. O., Corwin, H. G., Jr., & Olowin, R. P. 1989, *ApJS*, **70**, 1
 Adam, R., Goksu, H., Brown, S., Rudnick, L., & Ferrari, C. 2021, *A&A*, **648**, A60
 Baghmanyan, V., Zargaryan, D., Aharonian, F., et al. 2022, arXiv:2110.00309
 Baier, F. W., Fritze, K., & Tiersch, H. 1990, *AN*, **311**, 89
 Basu, K., Vazza, F., Erler, J., & Sommer, M. 2016, *A&A*, **591**, A142
 Beck, R., & Krause, M. 2005, *AN*, **326**, 414
 Bonafede, A., Brunetti, G., Rudnick, L., et al. 2022, *ApJ*, **933**, 218
 Bonafede, A., Brunetti, G., Vazza, F., et al. 2021, *ApJ*, **907**, 32
 Boselli, A., Fossati, M., & Sun, M. 2022, *A&ARv*, **30**, 3
 Boselli, A., Roehly, Y., Fossati, M., et al. 2016, *A&A*, **596**, A11
 Bothun, G. D., & Dressler, A. 1986, *ApJ*, **301**, 57
 Bravo-Alfaro, H., Cayatte, V., van Gorkom, J. H., & Balkowski, C. 2000, *AJ*, **119**, 580
 Brown, S., & Rudnick, L. 2011, *MNRAS*, **412**, 2
 Brunetti, G., & Jones, T. W. 2014, *IJMPD*, **23**, 1430007
 Brunetti, G., & Lazarian, A. 2011, *MNRAS*, **410**, 127
 Brunetti, G., & Lazarian, A. 2016, *MNRAS*, **458**, 2584
 Brunetti, G., Setti, G., & Comastri, A. 1997, *A&A*, **325**, 898
 Burns, J. O. 1990, *AJ*, **99**, 14
 Bykov, A. M., Vazza, F., Kropotina, J. A., Levenfish, K. P., & Paerels, F. B. S. 2019, *SSRv*, **215**, 14
 Capetti, A., de Ruiter, H. R., Fanti, R., et al. 2000, *A&A*, **362**, 871
 Chen, H., Sun, M., Yagi, M., et al. 2020, *MNRAS*, **496**, 4654
 Churazov, E., Forman, W. R., Jones, C., & Böhringer, H. 2003, *ApJ*, **590**, 225
 Churazov, E., Khabibullin, I., Lyskova, N., Sunyaev, R., & Bykov, A. M. 2021, *A&A*, **651**, A41
 Churazov, E., Vikhlinin, A., Zhuravleva, I., et al. 2012, *MNRAS*, **421**, 1123
 Crowl, H. H., Kenney, J. D. P., van Gorkom, J. H., & Vollmer, B. 2005, *AJ*, **130**, 65
 Curtis, H. D. 1918, *PLicO*, **13**, 9
 Fanti, R., Fanti, C., Schilizzi, R. T., et al. 1990, *A&A*, **231**, 333
 Feretti, L., Dallacasa, D., Giovannini, G., & Venturi, T. 1990, *A&A*, **232**, 337
 Feretti, L., & Venturi, T. 2002, in *Merging Processes in Galaxy Clusters* (Astrophysics and Space Science Library Vol. 272) ed. L. Feretti, I. M. Gioia, & G. Giovannini (Dordrecht: Kluwer Academic), 163
 Gavazzi, G. 1989, *AJ*, **346**, 59
 Giovannini, G., Feretti, L., & Stanghellini, C. 1991, *A&A*, **252**, 528
 Giovannini, G., Feretti, L., Venturi, T., Kim, K.-T., & Kronberg, P. P. 1993, *ApJ*, **406**, 399
 Grishin, K. A., Chilingarian, I., Afanasiev, A. V., et al. 2021, *NatAs*, **5**, 1308
 Gunn, J. E., & Gott, J. R., III 1972, *ApJ*, **176**, 1
 Gupta, Y., Ajithkumar, B., Kale, H., et al. 2017, *CSci*, **113**, 707
 Herschel, W. 1785, *RSPT*, **75**, 213
 Huchra, J. P., Geller, M. J., de Lapparent, V., & Corwin, H. G., Jr. 1990, *ApJS*, **72**, 433
 Jaffe, W. J., & Perola, G. C. 1973, *A&A*, **26**, 423
 Joye, W. A., & Mandel, E. 2003, in *ASP Conf. Ser.*, 295, *Astronomical Data Analysis Software and Systems*, ed. H. E. Payne, R. I. Jedrzejewski, & R. N. Hook (San Francisco, CA: ASP), 489
 Kenney, J. D. P., Abramson, A., & Bravo-Alfaro, H. 2015, *AJ*, **150**, 59
 Kent, S. M., & Gunn, J. E. 1982, *AJ*, **87**, 945
 Kim, K.-T., Kronberg, P. P., Dewdney, P. E., & Landecker, T. L. 1994, *A&AS*, **105**, 385
 Kim, K.-T., Kronberg, P. P., Giovannini, G., & Venturi, T. 1989, *Natur*, **341**, 720
 Koopmann, R. A., & Kenney, J. D. P. 2004, *ApJ*, **613**, 866
 Lal, D. V. 2020a, *ApJS*, **250**, 22
 Lal, D. V. 2020b, *AJ*, **160**, 161
 Lal, D. V., & Rao, A. P. 2004, *A&A*, **420**, 491
 Lyskova, N., Churazov, E., Zhang, C., et al. 2019, *MNRAS*, **485**, 2922
 Mazzarella, J. M., & Balzano, V. A. 1986, *ApJS*, **62**, 751
 McMullin, J. P., Waters, B., Schiebel, D., Young, W., & Golap, K. 2007, in *ASP Conf. Ser.* 376, *Astronomical Data Analysis Software and Systems*, ed. R. A. Shaw, F. Hill, & D. J. Bell (San Francisco, CA: ASP), 127
 Miley, G. K. 1980, *ARA&A*, **18**, 165
 Miller, N. A., Hornschemeier, A. E., & Mobasher, B. 2009, *AJ*, **137**, 4436
 Miller, N. A., & Owen, F. N. 2002, *AJ*, **124**, 2453
 Neumann, D. M., Arnaud, M., Gastaud, R., et al. 2001, *A&A*, **365**, L74
 Nulsen, P. E. J. 1982, *MNRAS*, **198**, 1007
 O'Dea, C. 1998, *PASP*, **110**, 493
 Oemler, A. 1976, *ApJ*, **209**, 693
 Ozawa, T., Nakanishi, H., Akahori, T., et al. 2015, *PASJ*, **67**, 110
 Perley, R. A., & Butler, B. J. 2017, *ApJS*, **230**, 7
 Pinzke, A., Oh, S. P., & Pfrommer, C. 2017, *MNRAS*, **465**, 4800
 Planck Collaboration, Ade, P. A. R., Aghanim, N., et al. 2013, *A&A*, **554**, A140
 Roberts, I. D., & Parker, L. C. 2020, *MNRAS*, **495**, 554
 Roberts, I. D., van Weeren, R. J., McGee, S. L., et al. 2021, *A&A*, **650**, A111
 Robitaille, T. P., Tollerud, E. J., Greenfield, P., et al. 2013, *A&A*, **558**, A33
 Rudnick, L. 2021, *Galax*, **9**, 85
 Sanders, J. S., Fabian, A. C., Sun, M., et al. 2014, *MNRAS*, **439**, 1182
 Sheardown, A., Fish, T. M., Roediger, E., et al. 2019, *ApJ*, **874**, 112
 Simionescu, A., Werner, N., Urban, O., et al. 2013, *ApJ*, **775**, 4
 Smith, R. J., Lucey, J. R., Hammer, D., et al. 2010, *MNRAS*, **408**, 1417
 Sun, M., Ge, C., Luo, R., et al. 2022, *NatAs*, **6**, 270
 Sun, M., Jones, C., Forman, W., et al. 2007, *ApJ*, **657**, 197
 Sun, M., Vikhlinin, A., Forman, W., Jones, C., & Murray, S. S. 2005, *ApJ*, **619**, 169
 Swarup, G., Ananthakrishnan, S., Kapahi, V. K., et al. 1991, *CSci*, **60**, 95
 van Moorsel, G., Kemball, A., & Greisen, E. 1996, in *ASP Conf. Ser.* 101, *Astronomical Data Analysis Software and Systems*, ed. G. H. Jacoby & J. Barnes (San Francisco, CA: ASP), 37
 van Weeren, R. J., Andrade-Santos, F., Dawson, W. A., et al. 2017, *NatAs*, **1**, 5
 van Weeren, R. J., de Gasperin, F., Akamatsu, H., et al. 2019, *SSRv*, **215**, 16
 van Weeren, R. J., Röttgering, H. J. A., Bagchi, J., et al. 2009, *A&A*, **506**, 1083
 Venturi, T., Feretti, L., & Giovannini, G. 1989, *A&A*, **213**, 49
 Venturi, T., Giacintucci, S., Merluzzi, P., et al. 2022, *A&A*, **660**, A81
 Venturi, T., Giovannini, G., & Feretti, L. 1990, *AJ*, **99**, 1381
 Vikhlinin, A., Markevitch, M. M., Forman, W. R., & Jones, C. 2001, *ApJ*, **555**, L87
 Vikhlinin, A., Markevitch, M. M., Murray, S. S., et al. 2005, *ApJ*, **628**, 655
 Wegner, G., Colless, M., Saglia, R. P., et al. 1999, *MNRAS*, **305**, 259
 Willson, M. A. G. 1970, *MNRAS*, **151**, 1
 Yagi, M., Yoshida, M., Komiyama, Y., et al. 2010, *AJ*, **140**, 1814
 Zhang, C., Churazov, E., Forman, W. R., & Lyskova, N. 2019, *MNRAS*, **488**, 5259
 Zwicky, F. 1933, *AcHPH*, **6**, 110