




# Hemispheric differences in altered reactivity of brain oscillations at rest after posterior lesions

Jessica Gallina<sup>1,2</sup> · Mattia Pietrelli<sup>1,2,3</sup> · Marco Zanon<sup>1,2,4</sup> · Caterina Bertini<sup>1,2</sup> 

Received: 14 December 2020 / Accepted: 10 April 2021 / Published online: 24 April 2021  
© The Author(s) 2021

## Abstract

A variety of evidence supports the dominance of the right hemisphere in perceptual and visuo-spatial processing. Although growing evidence shows a strong link between alpha oscillations and the functionality of the visual system, asymmetries in alpha oscillatory patterns still need to be investigated. Converging findings indicate that the typical alpha desynchronization occurring in the transition from the eyes-closed to the eyes-open resting state might represent an index of reactivity of the visual system. Thus, investigating hemispheric asymmetries in EEG reactivity at the opening of the eyes in brain-lesioned patients may shed light on the contribution of specific cortical sites and each hemisphere in regulating the oscillatory patterns reflecting the functionality of the visual system. To this aim, EEG signal was recorded during eyes-closed and eyes-open resting state in hemianopic patients with posterior left or right lesions, patients without hemianopia with anterior lesions and healthy controls. Hemianopics with both left and right posterior lesions showed a reduced alpha reactivity at the opening of the eyes, suggesting that posterior cortices have a pivotal role in the functionality of alpha oscillations. However, right-lesioned hemianopics showed a greater dysfunction, demonstrated by a reactivity reduction more distributed over the scalp, compared to left-lesioned hemianopics. Moreover, they also revealed impaired reactivity in the theta range. This favors the hypothesis of a specialized role of the right hemisphere in orchestrating oscillatory patterns, both coordinating widespread alpha oscillatory activity and organizing focal processing in the theta range, to support visual processing at the opening of the eyes.

**Keywords** Hemispheric differences · Alpha oscillations · Theta oscillations · Resting state · Hemianopia

## Introduction

There is a longstanding agreement about the existence of hemispheric asymmetries in visuo-spatial abilities (Duecker and Sack 2015; Heilman and Van Den Abell 1980; Kinsbourne 1977). For instance, the right hemisphere seems to have a dominant role in orienting and modulating attentional

allocation to both the ipsilateral and the contralateral hemifields, whereas, the left hemisphere is only involved when attending to the contra-lateral hemifield (Heilman and Van Den Abell 1980). Strong evidence about this dominance comes from experimental paradigms in healthy participants using cued shifts of spatial attention (Gitelman et al. 1999; Nobre et al. 1997) and from neuropsychological disorders such as spatial hemineglect, a failure to perceive and respond to stimuli on the contra-lesional side of space, which is more common and severe following right than left hemisphere lesions (Heilman et al. 1984; Heilman and Valenstein 1979; Bisiach and Luzzatti 1978). In addition, a prominent role of the right hemisphere has been also observed in perceptual processing of simple visual features (Corballis et al. 2002; Nicholls et al. 1999) and in spatial representation (Nicholls and Roberts 2002; Jewell and McCourt 2000; McCourt and Jewell 1999; McCourt and Olafson 1997; Mattingley et al. 1994).

✉ Caterina Bertini  
caterina.bertini@unibo.it

<sup>1</sup> Centre for Studies and Research in Cognitive Neuroscience, University of Bologna, Via Rasi e Spinelli 176, 47521 Cesena, Italy

<sup>2</sup> Department of Psychology, University of Bologna, Viale Berti Pichat 5, 40121 Bologna, Italy

<sup>3</sup> Department of Psychiatry, University of Wisconsin–Madison, 6001 Research Park Blvd, Madison, WI 53719, USA

<sup>4</sup> Neuroscience Area, International School for Advanced Studies (SISSA), Via Bonomea, 265, 34136 Trieste, Italy

More recent lines of research have linked visuo-spatial performance to oscillatory neurophysiological activity in the alpha range (7–13 Hz) (Brüers and Van Rullen 2018; Van Rullen 2016) and converge on the notion that alpha oscillatory parameters are related to different aspects of perceptual visual processing (Pfurtscheller et al. 1994). For instance, the individual alpha frequency of occipital oscillations represents a measure of temporal resolution of visual perception (Cecere et al. 2015; Samaha and Postle 2015; Klimesch et al. 2007; Valera et al. 1981), whereas alpha power (Romei et al. 2008a, b) and phase (Mathewson et al. 2009, 2012; Bush et al. 2009) reflect variations in cortical excitability and visual awareness. In addition, alpha power lateralization has been interpreted as a visuo-attentional mechanism (Capilla et al. 2014) facilitating stimulus processing (Sauseng et al. 2005; Vazquez Marrufo et al. 2001) and suppressing irrelevant distractors (Jensen and Mazaheri 2010; Klimesch et al. 2007).

However, alpha rhythm has also been reported to represent the dominant EEG pattern during eyes-closed resting condition in healthy awake individuals, with a prominent distribution over posterior regions of the scalp (Rosanova et al. 2009; Berger 1929). Interestingly, recent perspectives have proposed an association between alpha power at rest and the tonic and distributed synchronous activity of the underlying neurons (Sadaghiani and Kleinschmidt 2016; Klimesch et al. 2007), possibly indexing active suppression of neural predictions in the visual system (Sadaghiani and Kleinschmidt 2016) and, therefore, reflecting an active engagement of the neurons of the underlying neural population.

Although accumulating evidence indicates a robust functional link between alpha oscillations and the activity in the visual system, proof of asymmetries in alpha oscillatory patterns is still scarce. Indeed, asymmetries in the alpha range have been mainly investigated in frontoparietal networks and has been linked to psychiatric conditions (Ocklenburg et al. 2019; Stewart et al. 2011; Bruder et al. 2005, 2007; Metzger et al. 2004) or hand preference (Ocklenburg et al. 2019; Papousek and Shoulter 1999). However, recent findings on spatial orienting following directional cues have shown that, while in the left hemisphere alpha power decreases to facilitate visual processing in the contralateral field, alpha activity in the right hemisphere has a dual role in attention shifts. More precisely, alpha oscillations in the right hemisphere can both decrease, to enhance cued stimulus detection in the contralateral field, and increase to inhibit distractors in the contralateral field, when attention is cued to the ipsilateral field (Gallotto et al. 2020). On the other hand, a few studies also report imbalanced alpha activity at rest, with evidence of greater alpha power in the right hemisphere (Çiçek et al. 2003; Nalçacı et al. 1995; O'Boyle et al. 1991). Notably, recent evidence on patients with posterior brain lesions and hemianopia demonstrated that lesions of

the posterior cortices result in a pathological resting eyes-closed alpha oscillatory pattern, with a slowdown of the individual alpha frequency peak (IAF) and a reduction of the amplitude in the lesioned hemisphere, which was more pronounced in hemianopics with right lesions, compared to hemianopics with left lesions (Pietrelli et al. 2019). This observation confirms that alpha oscillations at rest might reflect the functionality of the posterior cortices and that right posterior lesions have a more detrimental effect in altering the functioning of the visual system, in line with the hypothesis of a dominant role of the right hemisphere in visuo-spatial processing. However, the evidence showing that posterior lesions alter alpha oscillatory parameters (Pietrelli et al. 2019) raise the question whether the residual alpha recorded in hemianopic patients during eyes-closed resting state can retain some functionality and whether hemispheric asymmetries might be evident in this residual functioning.

A typical reactivity measure at rest is the decrease of alpha amplitude at the opening of the eyes (Ben-Simon et al. 2012; Barry et al. 2007), which is known as alpha desynchronization or alpha suppression (Berger 1929). This effect represents a basic physiological response at the opening of the eyes in normal conditions and is prominently observed over the posterior areas of the brain (Ben-Simon et al. 2012; Marx et al. 2003), but occurs all over the scalp without evident focal topographical changes (Barry and De Blasio 2017; Barry et al. 2007). In addition to alpha suppression, the opening of the eyes also induces changes in non-alpha low-frequency bands, which typically show a more focal distribution (Barry and De Blasio 2017; Barry et al. 2007). In particular, local desynchronization in the transition from the eyes-closed to the eyes-open condition has also been observed in the theta band and has been associated with low-level stimulus processing (Barry and De Blasio 2017; Gevins et al. 1997; Grillon and Buchsbaum 1986). In this perspective, the typical alpha desynchronization at the opening of the eyes represents a widespread cortical activation, enabling focal changes in non-alpha bands (e.g. in the theta band) to gather visual information (Barry and De Blasio 2017; Barry et al. 2007; Marx et al. 2003). The complexity of this global and local oscillatory changes at eyes-opening may thus reflect increased active engagement of visual system (Barry and De Blasio 2017) and this engagement has been linked to widespread cortical and subcortico-cortical interactions (Başar 1999; Klimesch 1999).

Although investigations on alpha reactivity on clinical populations are limited, alterations in alpha reactivity were found in dementia (van der Hiele et al. 2008) and schizophrenia (Colombo et al. 1989). However, little is known about how brain lesions impact the EEG reactivity caused by eyes-opening. Nevertheless, lesion studies on this topic could be especially relevant to advance our understanding on the role of specific cortical sites and the contribution of each

hemisphere to the generation, distribution and functionality of the alpha rhythm on the scalp.

For this reason, the present study tested whether damage to posterior cortices results in disrupted or altered alpha desynchronization in the transition from the eyes-closed to the eyes-open resting state, investigating separately the effects of left and right hemispheric lesions. In addition, local changes in non-alpha bands (theta band) at the opening of the eyes were also investigated, since alteration in the widespread alpha suppression might also induce modifications in the typical patterns of changes in lower frequency bands. To this aim, a group of hemianopic patients with posterior left lesions, a group of hemianopics with posterior right lesions, a control group of patients with more anterior lesions and a control group of healthy participants were tested, recording EEG during rest, both during eyes-closed and eyes-open conditions. Both widespread cortical reactivity in the alpha range and local oscillatory changes in the theta range at the opening of the eyes were assessed, to investigate the effects of both left and right posterior lesions on the complex interaction between global and local processes reflecting task-independent activation of the visual system. Finally, visual performance in hemianopics was also tested, to investigate whether possible alterations in EEG reactivity at the opening of the eyes can relate to residual visual detection abilities.

## Methods

### Participants

Four groups of participants took part to the study: 13 patients with visual field defects due to lesions to the left posterior cortices (10 males, mean age = 53.8 years, SD = 15.89; mean time since lesion onset = 12.7 months, SD = 11.85), 13 patients with visual field defects due to lesions to the right posterior cortices (10 males, mean age = 58.9 years, SD = 16.47; mean time since lesion onset = 12.5 months, SD = 14.18), a control group of 14 patients without hemianopia with fronto-temporal lesions sparing the posterior cortices (6 males, mean age = 47.9 years, SD = 11.49; mean time since lesion onset = 25 months, SD = 21.35), and a control group of 14 age-matched healthy participants (7 males, mean age = 54.3 years, SD = 6.65). No differences between the groups were found in terms of age ( $F_{3,50} = 1.36$ ;  $p = 0.212$ ) or time since lesion onset ( $F_{2,37} = 2.58$ ;  $p = 0.089$ ; for clinical details, please see Table S1, Supplementary information).

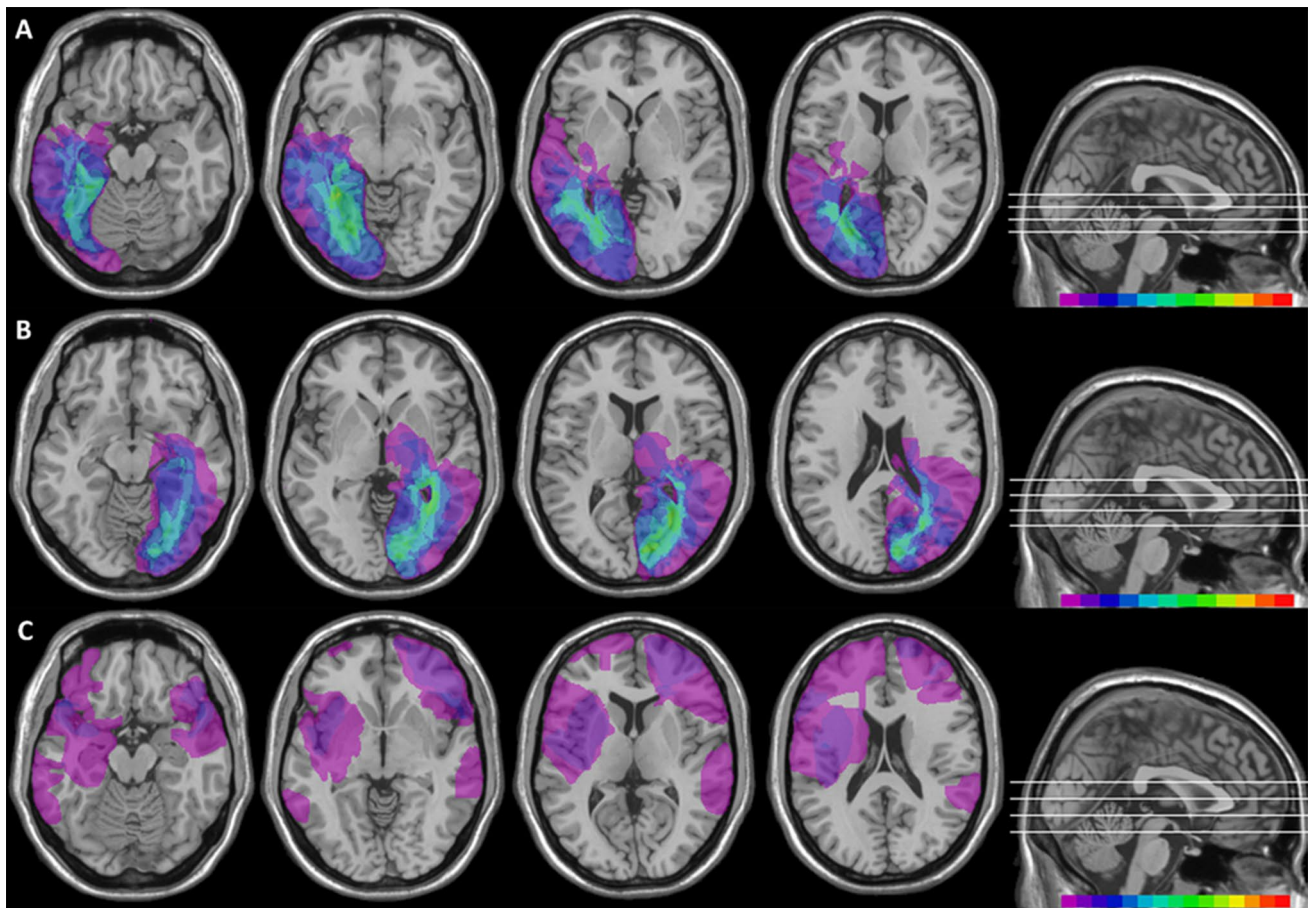
Mapping of brain lesions was performed using MRICro. Lesions documented by the most recent clinical CT or MRI were traced onto the T1-weighted MRI template from the Montreal Neurological Institute provided with MRICro software (Rorden et al. 2007; Rorden and Brett 2000), with

the exception of HEMI7 and HEMI21 whose MRI scans were not available. Lesion volumes were computed for each patient to compare the extension of the lesions among the three patients' groups. No significant differences (one-way ANOVA,  $F_{2,35} = 0.90$ ;  $p = 0.414$ ) among left-lesioned hemianopic patients, right-lesioned hemianopic patients and control patients were found (Fig. 1). Patients with posterior lesions were recruited based on reported visual field defects, the availability of a visual field perimetry and CT/MRI reports of the lesion. In patients with right lesions, the presence of neglect was screened using the Behavioral Inattention Test (Wilson et al. 1987), to ensure performance was in the normal range (conventional subscale:  $M = 136.8$ ;  $SD = 6.2$ . Behavioral subscale:  $M = 75$ ;  $SD = 5.4$ ).

All patients showed normal or corrected-to-normal visual acuity. Patients were informed about the procedure and the purpose of the study and gave written informed consent. The study was designed and performed in accordance with the ethical principles of the Declaration of Helsinki and was approved by the Ethics Committee of the Regional Health Service Romagna (CEROM; n.2300).

### EEG during resting-state

Participants comfortably seated at rest in a sound-proof room in front of a 24" LCD monitor (refresh rate 60 Hz) at a viewing distance of 57 cm. EEG signal was recorded in five sessions of one-minute for each of the two resting conditions: eyes-closed and eyes-open resting state. During the eyes-open resting state, participants were asked to fixate a white central fixation cross ( $0.5^\circ$ ) against a black background on the monitor. The two resting conditions were alternated among the one-minute session of recording. EEG data were acquired through a BrainAmp DC amplifier (BrainProducts GmbH, Germany) and Ag/AgCl electrodes (Fast'nEasy Cap, Easycap GmbH, Germany) from 59 scalp sites (Fp1, AF3, AF7, F1, F3, F7, FC1, FC3, FC5, FT7, C1, C3, C5, T7, CP1, CP3, CP5, TP7, P1, P3, P5, P7, PO3, PO7, O1, Fp2, AF4, AF8, F2, F4, F8, FC2, FC4, FC6, FT8, C2, C4, C6, T8, CP2, CP4, CP6, TP8, P2, P4, P6, P8, PO4, PO8, O2, FPz, AFz, Fz, FCz, Cz, CPz, Pz, POz, Oz) and the right mastoid. The left mastoid was used as online reference electrode, while the ground electrode was placed on the right cheek. Vertical and horizontal electrooculogram (EOG) components were recorded from above and below the left eye, and from the outer canthus of each eye. Data were recorded with a band-pass filter of 0.01–100 Hz and digitized at a sampling rate of 1000 Hz, while impedances were kept under 5 K $\Omega$ . Raw EEG signal was off-line pre-processed and analyzed with EEGLAB (4.1.2b; Delorme and Makeig 2004), using custom Matlab routines (R2017a; The Mathworks Inc., USA). Data from all electrodes were re-referenced to the average of all scalp electrodes (Lasaponara et al. 2018, 2019; Pietrelli



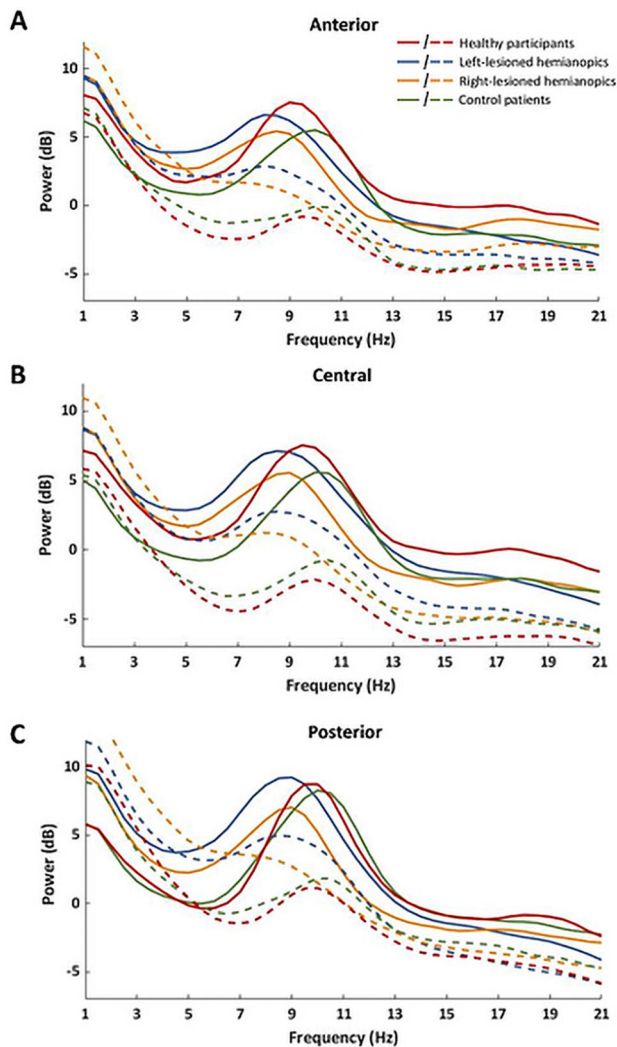
**Fig. 1** Location and overlap of brain lesions of patients. The image shows the lesions of the hemianopic patients with left posterior lesions **a**, hemianopic patients with right posterior lesions **b** and control patients with anterior brain lesions **c** projected onto four axial

slices of the standard MNI brain. In each slice, the left hemisphere is on the left side. The levels of the axial slices are marked by white lines on the sagittal view of the brain. The color bar indicates the number of overlapping lesions

et al. 2019; Pironcini et al. 2020) and filtered with a band-pass filter of 1–100 Hz. The first 10 s of each one-minute recording session were excluded from the analysis, to avoid any contamination of the signal related to the transition from eyes-closed to the eyes-open resting condition. Continuous signal was segmented in epochs of 2 s. Horizontal and vertical eye artifacts were visually identified and removed by means of Independent Component Analysis (ICA), after data dimensionality reduction to 32 components based on Principal Component Analysis (PCA). On the cleaned EEG signal, a Fast Fourier Transformation (FFT) was computed on the 2-s epochs, with a frequency resolution of 0.5 Hz. Then, the amplitude of alpha and theta oscillations was calculated as the average power (in dB) in each electrode between 7 and 13 Hz and 4 and 6 Hz, respectively. To compare the lesioned and intact hemispheres across participants, electrodes were swapped cross-hemispherically for patients with lesions to the right hemisphere (i.e., the data were analyzed as if all patients were left-lesioned).

All the electrodes on the scalp were considered into the subsequent analyses, with the exception of the more anterior electrodes, to avoid contamination of the signal by the ocular artifacts, and electrodes on the sagittal midline, to provide a better segregation of the signal between the two hemispheres. The remaining electrodes were divided in six regions of interest (ROI), to perform statistical analysis on alpha and theta power on the entire scalp (Fig. 2). Six right (P4, P6, P8, PO4, PO8, O2) and left (P3, P5, P7, PO3, PO7, O1) parieto-occipital electrodes were grouped in two ROIs representing the posterior regions of the intact/right hemisphere and the lesioned/left hemisphere, respectively. Similarly, centro-parietal right (C2, C4, C6, CP2, CP4, CP6, P2) and left (C1, C3, C5, CP1, CP3, CP5, P1) electrodes and anterior right (AF4, F2, F4, FC2, FC4, FC6) and left (AF3, F1, F3, FC1, FC3, FC5) electrodes were grouped in four ROIs representing central and anterior regions of the intact/right and lesioned/left hemisphere, respectively.

To test whether posterior brain damage might affect modulation of alpha and theta power induced by eyes-opening,



**Fig. 2** Spectrograms of the mean power across electrodes of the anterior **a**, central **b** and posterior **c** region of interest. Solid lines represent signal in the eyes-closed condition; dashed lines represent signal in the eyes-open condition

the oscillatory EEG power in both frequency bands was analyzed with separate ANOVAs with **CONDITION** (eyes-closed, eyes-open), **HEMISPHERE** (lesioned, intact) and **ROI** (posterior, central, anterior), as within subject factors and **GROUP** (healthy participants, hemianopic patients with left posterior lesions, hemianopic patients with right posterior lesions, control patients with anterior lesions) as between subjects factor. Post-hoc comparisons were performed with either Tukey or Tukey HSD, in case of unequal sample size.

### Computerized visual field test

In addition to the EEG recording, during the clinical examination, visual detection abilities in hemianopic patients

were also tested, to investigate a possible link between visual performance and EEG reactivity at the opening of the eyes (Bolognini et al. 2005; Passamonti et al. 2009). Patients were presented with a stimulus array of  $52^\circ \times 45^\circ$  (horizontally and vertically, respectively), projected on the wall at a viewing distance of 120 cm. Targets consisted of white dots ( $1^\circ$ ), presented for 100 ms at different positions on a black background. A red fixation cross ( $0.5^\circ$ ) was presented on the center of the screen. The total number of targets presented was 96 (i.e. 48 targets for each hemifield). No target was presented in 31 trials (i.e., catch trials). Patients were asked to press a response button after the detection of the target. The task was performed in two different conditions: when patients were not allowed to move their eyes to compensate for the visual field loss and had to keep their gaze at a central fixation cross (fixed-eyes) and when patients were allowed to perform eye movements (eye movements). The experimenter monitored the patients' gaze throughout the task. Visual detections and false alarms rates were measured.  $D'$  prime (perceptual sensitivity) was calculated and used for subsequent correlational statistical analysis with EEG indices.

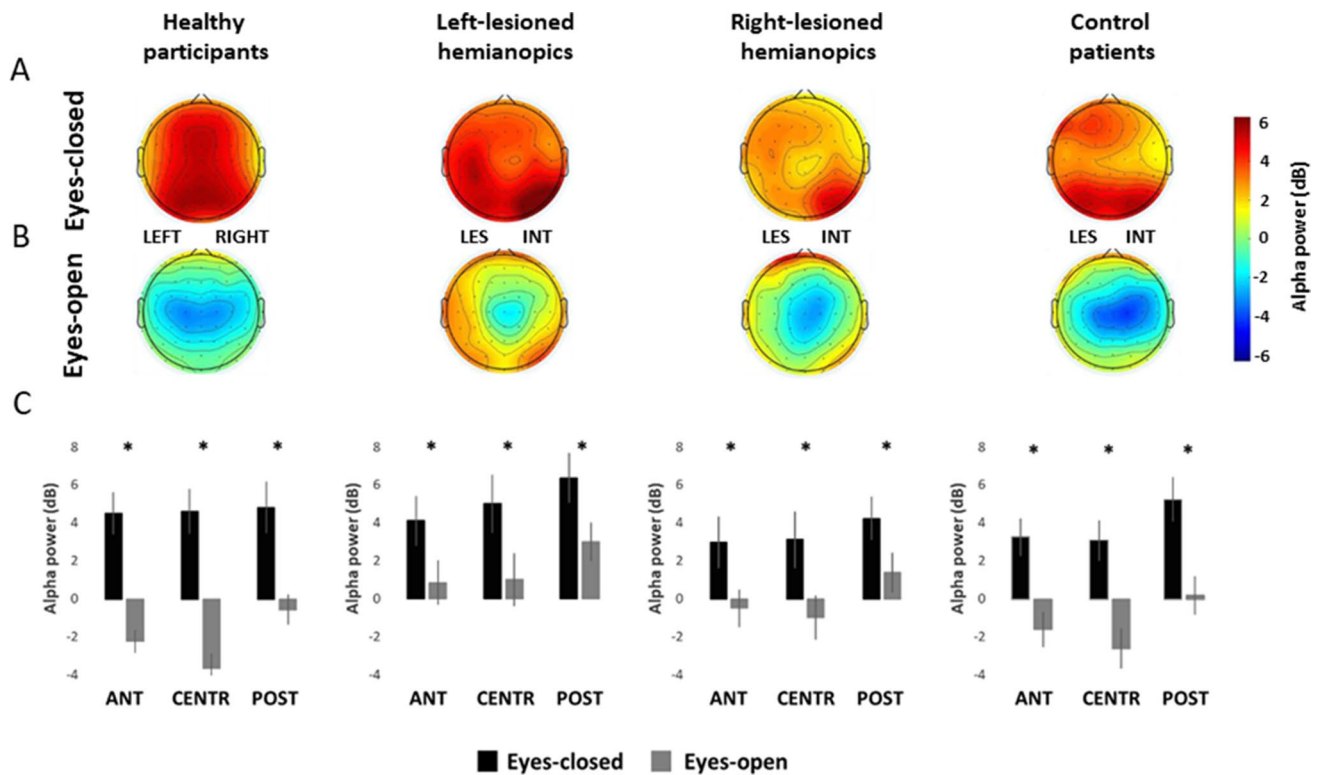
## Results

### Alpha power in the eyes-closed and in the eyes-open resting conditions

The overall ANOVA on alpha power revealed a significant main effect of **CONDITION** ( $F_{1,50} = 157.73$ ;  $p < 0.001$ ;  $\eta^2 = 0.76$ ), with higher alpha power in eyes-closed condition ( $M = 3.97$  dB) compared to the eyes-open condition ( $M = -0.53$  dB;  $p < 0.001$ ), showing the presence of a significant desynchronization of the power of alpha at the opening of the eyes. In addition, a significant main effect of **ROI** ( $F_{2,100} = 61.09$ ;  $p < 0.001$ ;  $\eta^2 = 0.55$ ) was found, explained by higher power in posterior regions ( $M = 2.81$  dB), relative to central regions ( $M = 1.06$  dB;  $p < 0.001$ ) and anterior regions ( $M = 1.30$  dB;  $p < 0.001$ ). On the contrary, no significant main effect of **GROUP** ( $F_{3,50} = 0.86$ ,  $p = 0.467$ ;  $\eta^2 = 0.05$ ) nor **HEMISPHERE** ( $F_{1,50} = 3.16$ ;  $p = 0.081$ ;  $\eta^2 = 0.06$ ) was found.

Significant **CONDITION**×**GROUP** ( $F_{3,50} = 6.12$ ;  $p = 0.001$ ;  $\eta^2 = 0.27$ ), **HEMISPHERE**×**GROUP** ( $F_{3,50} = 2.83$ ;  $p = 0.048$ ;  $\eta^2 = 0.15$ ) and **CONDITION**×**HEMISPHERE**×**GROUP** ( $F_{3,50} = 3.64$ ;  $p = 0.019$ ;  $\eta^2 = 0.18$ ) interactions were also found. More importantly, the ANOVA revealed a significant **CONDITION**×**ROI**×**GROUP** ( $F_{6,100} = 4.22$ ;  $p < 0.001$ ;  $\eta^2 = 0.20$ ) interaction (Figs. 2 and 3).

To investigate the distribution of alpha desynchronization over the regions of the scalp within each group, this latter



**Fig. 3** Scalp topographies represent the scalp distribution of the alpha power (dB) within each group in the frequency window 7–13 Hz, in the eyes-closed condition **a** and in the eyes-open condition **b**. For patients with lesions to the right hemisphere, electrodes were swapped cross-hemispherically, so that the lesioned hemisphere is represented on the left side. **c** Bar histograms show the mean alpha

power (dB) in the eyes-closed and the eyes-open conditions, relative to anterior, central and posterior region of interest, within each group. Error bars represent standard error; asterisks are signaling the significant comparisons. *ANT* anterior region of interest, *CENTR* central region of interest, *POST* posterior region of interest, *LES* lesioned hemisphere, *INT* intact hemisphere

significant interaction was explored, performing separate ANOVAs on each group of participants, with *CONDITION* (eyes-closed, eyes-open) and *ROI* (posterior, central, anterior) as factors.

The ANOVA on the group of healthy participants revealed a significant main effect of *CONDITION* ( $F_{1,13} = 85.45$ ;  $p < 0.001$ ;  $\eta^2 = 0.87$ ), with higher alpha power in the eyes-closed condition ( $M = 4.61$  dB) compared to the eyes-open condition ( $M = -2.1$  dB;  $p < 0.001$ ), indicating a significant desynchronization all over the scalp at the opening of the eyes. Moreover, a significant main effect of *ROI* ( $F_{2,26} = 20.46$ ;  $p < 0.001$ ;  $\eta^2 = 0.61$ ) was found, with higher alpha power over posterior regions ( $M = 2.11$  dB), relative to central regions ( $M = 0.48$  dB;  $p < 0.001$ ) and anterior regions ( $M = 1.13$  dB;  $p < 0.001$ ) and higher alpha power in anterior regions, compared to central regions ( $p = 0.043$ ). Also, a significant *CONDITION* × *ROI* ( $F_{2,26} = 47.81$ ;  $p < 0.001$ ;  $\eta^2 = 0.77$ ) interaction was found. Post-hoc comparisons showed significantly higher alpha power in the eyes-closed condition compared to the eyes-open condition in posterior regions (eyes-closed  $M = 4.78$  dB; eyes-open  $M = -0.56$  dB,  $p < 0.001$ ), central regions (eyes-closed  $M = 4.57$  dB;

eyes-open  $M = -3.61$  dB,  $p < 0.001$ ) and anterior regions (eyes-closed  $M = 4.47$  dB; eyes-open  $M = -2.20$  dB;  $p < 0.001$ ; Fig. 3). In addition, in the eyes-open condition, alpha power in posterior regions was significantly higher than in parietal regions ( $p < 0.001$ ) and anterior regions ( $p < 0.001$ ; Fig. 3).

The ANOVA on hemianopic patients with left lesions revealed a significant main effect of *CONDITION* ( $F_{1,12} = 23.14$ ;  $p < 0.001$ ;  $\eta^2 = 0.66$ ) with higher alpha power in the eyes-closed condition ( $M = 4.69$  dB) compared to the eyes-open condition ( $M = 1.46$  dB;  $p < 0.001$ ), again indicating a significant desynchronization all over the scalp at the opening of the eyes. In addition, a significant main effect of *ROI* ( $F_{2,24} = 13.05$ ;  $p < 0.001$ ;  $\eta^2 = 0.52$ ) was found, with higher alpha power in posterior regions ( $M = 4.26$  dB), relative to central regions ( $M = 2.73$  dB;  $p = 0.003$ ) and anterior regions ( $M = 2.25$  dB;  $p < 0.001$ ). On the contrary, the *CONDITION* × *ROI* ( $F_{2,24} = 1.89$ ;  $p = 0.180$ ;  $\eta^2 = 0.13$ ) interaction was not significant (Fig. 3).

Similarly to the ANOVAs on healthy participants and hemianopic patients with left lesions, the ANOVA on the group of hemianopics with right lesions showed again a

significant main effect of CONDITION ( $F_{1,12} = 30.12$ ;  $p < 0.001$ ;  $\eta^2 = 0.71$ ), with higher alpha power in the eyes-closed condition ( $M = 2.92$  dB) compared to the eyes-open condition ( $M = -0.20$  dB;  $p < 0.001$ ) and a significant main effect of ROI ( $F_{2,24} = 11.64$ ;  $p < 0.001$ ;  $\eta^2 = 0.49$ ), explained by higher alpha power in posterior regions ( $M = 2.38$  dB), relative to central regions ( $M = 0.91$  dB;  $p < 0.001$ ) and anterior regions ( $M = 1.06$  dB;  $p < 0.001$ ). The CONDITION $\times$ ROI interaction ( $F_{2,24} = 3.05$ ;  $p = 0.066$ ;  $\eta^2 = 0.20$ ) was not significant (Fig. 3).

Finally, also the ANOVA on controls patient with anterior lesions showed a significant main effect of CONDITION ( $F_{1,13} = 34.36$ ;  $p < 0.001$ ;  $\eta^2 = 0.72$ ), with higher alpha power in the eyes-closed condition ( $M = 3.64$  dB), compared to the eyes-open condition ( $M = -1.25$  dB;  $p < 0.001$ ) and a significant main effect of ROI ( $F_{2,26} = 23.00$ ;  $p < 0.001$ ;  $\eta^2 = 0.64$ ), revealing higher alpha power in posterior regions ( $M = 2.56$  dB), compared to central ( $M = 0.24$  dB;  $p < 0.001$ ) and anterior regions ( $M = 0.79$  dB;  $p < 0.001$ ). No significant CONDITION $\times$ ROI ( $F_{2,26} = 1.80$ ;  $p = 0.185$ ;  $\eta^2 = 0.12$ ) interaction was found (Fig. 3).

### Alpha power reactivity

The results of the statistical analysis on the alpha power in the eyes-closed and in the eyes-open conditions suggest the presence of a significant alpha power desynchronization induced by the opening of the eyes all over the scalp, both in healthy participants and in hemianopic and control patients. However, to compare the magnitude of the alpha desynchronization at the opening of the eyes between groups, an index of alpha reactivity was further calculated. The alpha reactivity index was computed by subtracting the mean power in the eyes-open condition to the mean power in the eyes-closed condition (alpha reactivity = mean alpha power eyes-closed minus mean alpha power eyes-open) in each ROI separately, for each group of participants.

One-way ANOVAs were performed for the posterior, the central and the anterior ROIs, with GROUP (healthy participants, hemianopic patients with left posterior lesions, hemianopic patients with right posterior lesions, control patients with anterior lesions) as between-subject factor.

The ANOVA on the posterior ROI revealed a significant main effect of GROUP ( $F_{3,50} = 4.31$ ;  $p = 0.009$ ;  $\eta^2 = 0.21$ ), pointing to a reduced alpha reactivity in right-lesioned hemianopic patients ( $M = 2.22$  dB), compared to healthy participants ( $M = 5.34$  dB;  $p = 0.018$ ). In contrast, alpha reactivity in left-lesioned hemianopic patients ( $M = 3.08$  dB;  $p = 0.096$ ) and control patients ( $M = 4.75$  dB;  $p = 0.917$ ) was not significantly different relative to healthy participants. No other significant comparison was found (all  $ps > 0.081$ ).

The ANOVA on the central ROI showed again a significant main effect of GROUP ( $F_{3,50} = 4.31$ ;  $p = 0.009$ ;

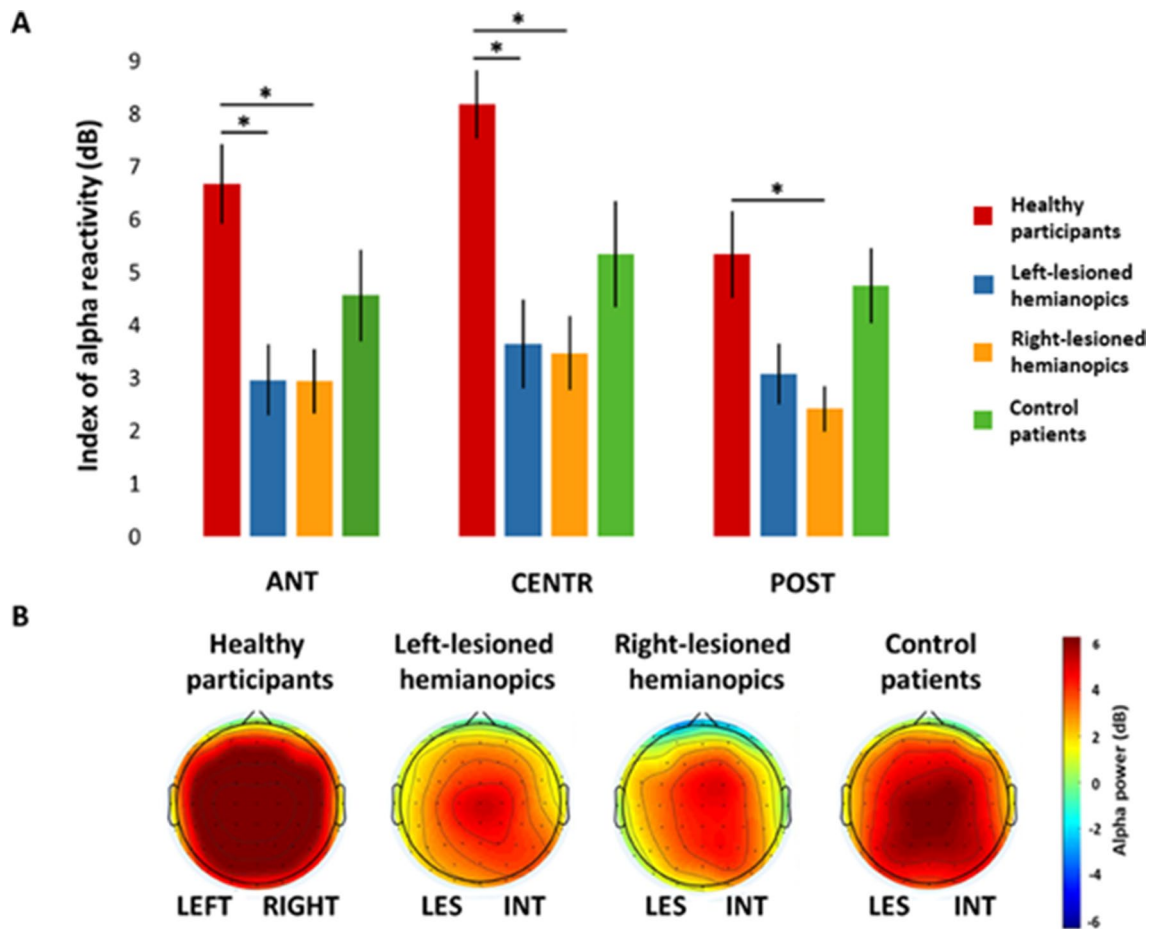
$\eta^2 = 0.20$ ). In this region reduced alpha reactivity was found both in left-lesioned hemianopic patients ( $M = 3.64$  dB;  $p = 0.002$ ) and in right-lesioned hemianopic patients ( $M = 3.47$  dB;  $p = 0.001$ ), compared to healthy participants ( $M = 8.17$  dB). No significant difference in alpha reactivity was found between control patients ( $M = 5.34$  dB;  $p = 0.073$ ) and healthy controls. No other comparison was significant (all  $ps > 0.394$ ).

Finally, also the ANOVA on the anterior ROI showed a significant main effect of GROUP ( $F_{3,50} = 5.75$ ;  $p = 0.002$ ;  $\eta^2 = 0.26$ ). Similarly to the results on the central ROI a reduced alpha reactivity was found only in left-lesioned hemianopic patients ( $M = 2.96$  dB;  $p = 0.006$ ) and in right-lesioned hemianopic patients ( $M = 2.94$  dB;  $p = 0.005$ ), compared to healthy participants ( $M = 6.67$  dB). No significant difference in alpha reactivity was found between control patients ( $M = 4.56$  dB;  $p = 0.183$ ) and healthy controls. No other significant comparison was found (all  $ps > 0.428$ ).

Overall, these results suggest a reduced alpha reactivity only in hemianopic patients, with right-lesioned hemianopics showing a more global and widespread reactivity reduction, compared to left-lesioned hemianopics (Fig. 4).

### Theta power in the eyes-closed and in the eyes-open resting conditions

The overall ANOVA on theta power revealed a significant main effect of GROUP ( $F_{3,50} = 4.48$ ;  $p = 0.007$ ;  $\eta^2 = 0.21$ ), with hemianopic patients with left lesions showing higher theta power ( $M = 3.00$  dB) relative to the control group of patients with anterior lesions ( $M = -0.33$ ;  $p = 0.041$ ), while no other between-groups difference was evident (all  $ps > 0.075$ ). Moreover, a significant main effect of CONDITION ( $F_{1,50} = 4.33$ ;  $p = 0.042$ ;  $\eta^2 = 0.08$ ) was found, explained by higher theta power in the eyes-closed condition ( $M = 1.80$  dB) compared to the eyes-open condition ( $M = 0.82$  dB;  $p = 0.038$ ), indicating a significant desynchronization of the power of theta at the opening of the eyes. A significant main effect of HEMISPHERE ( $F_{1,50} = 40.89$ ;  $p < 0.001$ ;  $\eta^2 = 0.45$ ), with higher theta power in the lesioned/left hemisphere ( $M = 1.72$  dB) compared to the intact/right hemisphere ( $M = 0.89$  dB;  $p < 0.001$ ) was also found. In addition, and a significant main effect of ROI ( $F_{2,100} = 43.96$ ;  $p = 0.007$ ;  $\eta^2 = 0.47$ ) was found, revealing lower theta power in central regions ( $M = 0.41$  dB), compared to posterior regions ( $M = 1.94$  dB;  $p < 0.001$ ) and anterior regions ( $M = 1.57$  dB;  $p < 0.001$ ). Significant HEMISPHERE $\times$ GROUP ( $F_{3,50} = 4.59$ ;  $p = 0.006$ ;  $\eta^2 = 0.22$ ) and HEMISPHERE $\times$ ROI $\times$ GROUP ( $F_{6,100} = 2.51$ ;  $p = 0.026$ ;  $\eta^2 = 0.13$ ) interactions were also found. More importantly, the ANOVA revealed a significant CONDITION $\times$ ROI $\times$ GROUP ( $F_{6,10} = 3.0$ ;  $p = 0.008$ ;  $\eta^2 = 0.15$ , Fig. 5) interaction. Similarly, to the analyses on



**Fig. 4** **a** Bar histograms show the index of alpha reactivity (dB) within each group, relative to the anterior, central and posterior region of interest and represent the comparisons between each group, separately for each region of interest. Error bars represent standard error; asterisks are signaling the significant comparisons. **b** Scalp topographies represent the scalp distribution of the magnitude of alpha power reactivity (dB; alpha reactivity = mean alpha power eyes-

closed minus mean alpha power eyes-open) averaged across participants in the frequency window 7–13 Hz, in each group. For patients with lesions to the right hemisphere, electrodes were swapped cross-hemispherically, so that the lesioned hemisphere is represented on the left side. *ANT* anterior region of interest, *CENTR* central region of interest, *POST* posterior region of interest, *LES* lesioned hemisphere, *INT* intact hemisphere

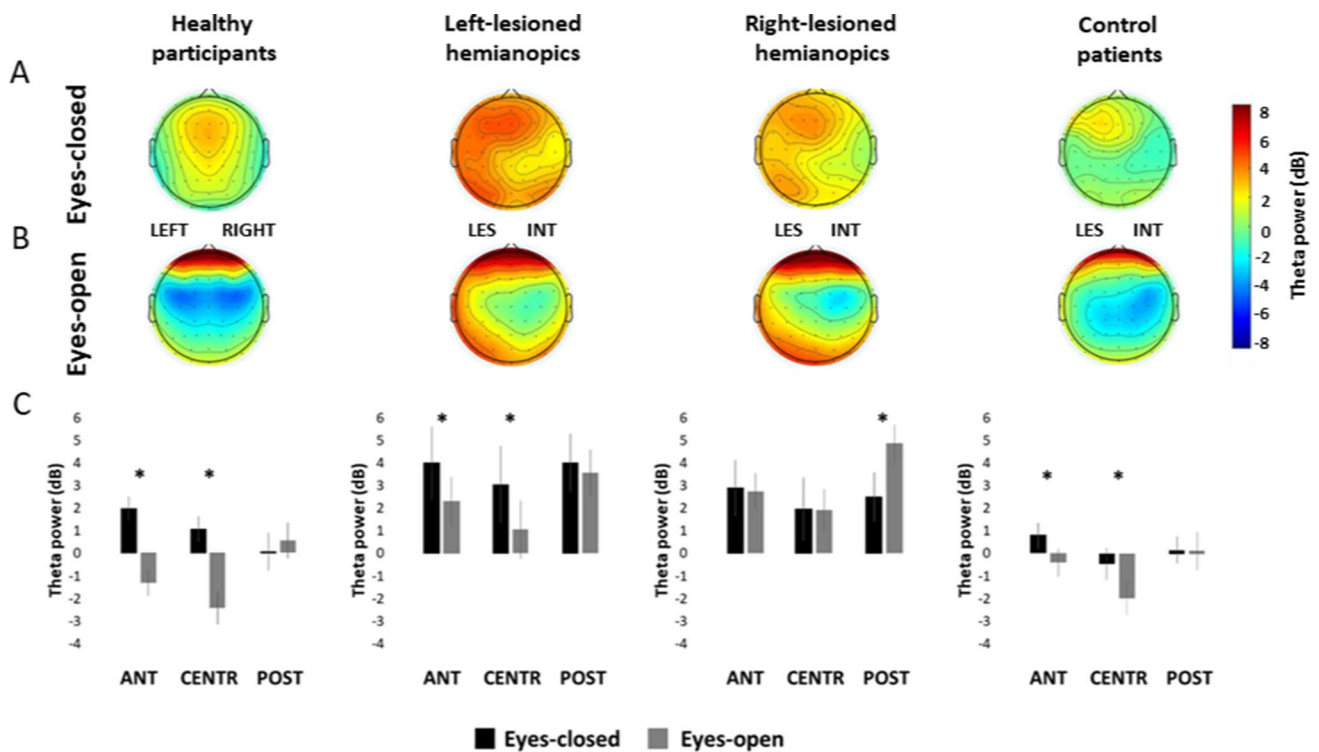
alpha power, this interaction was further explored, performing separate ANOVAs on each group of participants, with *CONDITION* (eyes-closed, eyes-open) and *ROI* (posterior, central, anterior) as factors, to investigate the distribution of theta desynchronization over the regions of the scalp within each group.

The ANOVA on the group of healthy participants showed a significant main effect of *CONDITION* ( $F_{1,13} = 6.05$ ;  $p = 0.028$ ;  $\eta^2 = 0.32$ ) with higher theta power in the eyes-closed condition ( $M = 1.03$  dB) compared to the eyes-open condition ( $M = -1.07$  dB;  $p = 0.028$ ). In addition a significant main effect of *ROI* ( $F_{2,26} = 14.09$ ;  $p < 0.001$ ;  $\eta^2 = 0.53$ ) was found, with significantly lower theta power in central regions ( $M = -0.70$  dB) relative to posterior ( $M = 0.31$  dB;  $p < 0.001$ ) and anterior regions ( $M = 0.32$  dB;  $p < 0.001$ ). Finally, a significant *CONDITION* × *ROI* ( $F_{2,26} = 66.06$ ;  $p < 0.001$ ;  $\eta^2 = 0.84$ ) interaction was found. Post-hoc

comparisons revealed significantly higher theta power in the eyes-closed condition compared to the eyes-open condition in the anterior regions (eyes-closed  $M = 1.97$ ; eyes-open  $M = -1.32$  dB;  $p < 0.001$  dB) and the central regions (eyes-closed  $M = 1.06$  dB; eyes-open  $M = -2.45$  dB;  $p < 0.001$ ), but no significant difference between the two conditions was found in posterior regions (eyes-closed  $M = 0.06$  dB; eyes-open  $M = 0.56$ ;  $p = 0.498$ ), indicating the presence of theta desynchronization only in anterior and central regions (Fig. 5).

The ANOVA on hemianopic patients with left lesions did not show a significant main effect of *CONDITION* ( $F_{1,12} = 2.27$ ;  $p = 0.158$ ;  $\eta^2 = 0.16$ ), but a significant main effect of *ROI* ( $F_{2,24} = 2.36$ ;  $p < 0.001$ ;  $\eta^2 = 0.51$ ) with lower theta power in central regions ( $M = 2.06$  dB) compared to posterior regions ( $M = 3.80$  dB;  $p < 0.001$ ) and anterior regions ( $M = 3.15$ ;  $p = 0.013$ ). In addition, the





**Fig. 5** Scalp topographies represent the scalp distribution of the theta power (dB) within each group in the frequency window 4–6 Hz, in the eyes-closed condition **a** and in the eyes-open condition **b**. For patients with lesions to the right hemisphere, electrodes were swapped cross-hemispherically, so that the lesioned hemisphere is represented on the left side. **c** Bar histograms show the mean theta

power (dB) in the eyes-closed and the eyes-open conditions, relative to anterior, central and posterior region of interest, within each group. Error bars represent standard error; asterisks are signaling the significant comparisons. *ANT* anterior region of interest, *CENTR* central region of interest, *POST* posterior region of interest, *LES* lesioned hemisphere, *INT* intact hemisphere

CONDITION $\times$ ROI ( $F_{2,22}=4.66$ ;  $p=0.020$ ;  $\eta^2=0.29$ ) interaction was also significant. Similarly to healthy participants, the subsequent post-hoc comparisons revealed significantly higher theta power in the eyes-closed condition compared to the eyes-open condition in the anterior regions (eyes-closed  $M=4.01$  dB; eyes-open  $M=2.29$  dB;  $p=0.001$ ) and in the central regions (eyes-closed  $M=3.05$  dB; eyes-open  $M=1.06$  dB;  $p<0.001$ ), but not in posterior regions (eyes-closed  $M=4.02$  dB; eyes-open  $M=3.57$  dB;  $p=0.822$ ; Fig. 5).

The ANOVA on the group of hemianopic patients with right lesions did not show a significant main effect of CONDITION ( $F_{1,12}=0.59$ ;  $p=0.456$ ;  $\eta^2=0.045$ ), but a significant main effect of ROI ( $F_{2,24}=9.11$ ;  $p=0.001$ ;  $\eta^2=0.43$ ) explained by higher theta power in posterior regions ( $M=3.70$  dB) relative to central regions ( $M=1.95$  dB;  $p<0.001$ ), while no other significant difference among the regions was found (all  $ps>0.102$ ). In addition, the CONDITION $\times$ ROI ( $F_{2,24}=9.30$ ;  $p=0.001$ ;  $\eta^2=0.43$ ) interaction was also significant. However, in contrast to the results on healthy participants and left-lesioned hemianopics, post-hoc comparisons did not reveal any significant difference in theta power between the eyes-closed and the

eyes-open conditions in the anterior regions (eyes-closed  $M=2.89$  dB; eyes-open  $M=2.74$  dB;  $p=0.999$ ) and the central regions (eyes-closed  $M=1.97$  dB; eyes-open  $M=1.93$  dB;  $p=1.00$ ; Fig. 5). Moreover, a significant lower theta power in the eyes-closed condition ( $M=2.51$  dB) compared to the eyes-open condition ( $M=4.88$  dB;  $p<0.001$ ) was found in posterior regions, indicating the presence of a significant theta synchronization at the opening of the eyes (Fig. 5).

Finally, in the control group of patients with anterior lesions, no significant main effect of CONDITION ( $F_{1,13}=1.26$ ;  $p=0.28$ ;  $\eta^2=0.09$ ) was found. In contrast, a significant main effect of ROI ( $F_{2,6}=13.77$ ;  $p<0.001$ ;  $\eta^2=0.52$ ) was evident, with significantly lower theta power in central regions ( $M=-1.43$  dB) compared to posterior ( $M=0.20$  dB;  $p<0.001$ ) and anterior regions ( $M=0.22$  dB;  $p<0.001$ ). The CONDITION $\times$ ROI ( $F_{2,26}=5.43$ ,  $p=0.011$ ;  $\eta^2=0.29$ ) interaction was also significant. Again similarly to healthy participants and left-lesioned hemianopics, post-hoc comparisons revealed a significant higher theta power in the eyes-closed condition relative to the eyes-open condition in the anterior regions (eyes-closed  $M=-0.95$  dB; eyes-open  $M=-0.50$  dB;  $p=0.013$ ) and the central regions

(eyes-closed  $M = -0.54$  dB; eyes-open  $M = -2.32$  dB;  $p = 0.002$ ), but not in posterior regions (eyes-closed  $M = 0.22$  dB; eyes-open  $M = 0.18$  dB;  $p = 0.999$ ; Fig. 5).

### Theta power reactivity

Overall, the results of the statistical analysis on the theta power in the eyes-closed and in the eyes-open conditions suggest differences between groups in theta power changes induced by the opening of the eyes in the three ROIs examined. More specifically, no changes between the eyes-closed and the eyes-open conditions were found in the posterior regions in all groups, with the exception of right-lesioned hemianopics, who showed an atypical increase in theta power at the opening of the eyes, compared to the eyes-closed condition. Differently, in the central and the anterior regions, all groups showed a significant desynchronization at the opening of the eyes, again with the exception of right-lesioned hemianopics, who did not show any significant change between the eyes-closed and the eyes-open conditions. An index of theta reactivity at the opening of the eyes was calculated (theta reactivity = mean theta power eyes-closed minus mean theta power eyes-open), to compare the magnitude of theta desynchronization at the opening of the eyes in the central and anterior regions among the groups of participants showing desynchronization (i.e., healthy participants, left-lesioned hemianopics and control patients with anterior lesions). Right-lesioned hemianopics were not included in this comparison, since they did not exhibit a significant desynchronization. Two separate one-way ANOVAs were performed for the central and the anterior ROIs, having GROUP (healthy participants, hemianopic patients with left posterior lesions, control patients with anterior lesions) as between-subjects factor.

Both the ANOVAs on the central ROI ( $F_{2,38} = 0.83$ ;  $p = 0.44$ ;  $\eta p^2 = 0.004$ ) and the anterior ROI ( $F_{2,38} = 1.19$ ;  $p = 0.31$ ;  $\eta p^2 = 0.006$ ) did not show a significant main effect of GROUP. This suggests that the overall pattern of theta desynchronization was similar between left-lesioned hemianopics, patients with anterior lesions and healthy participants. On the contrary, right-lesioned hemianopic patients revealed an atypical pattern of theta changes at the opening of the eyes, with no desynchronization in the central and anterior regions and the presence of theta synchronization in the posterior regions.

### Hemianopic patients' visual performance and reactivity in the alpha and theta band

Finally, we tested whether altered alpha and theta reactivity over the posterior, central and anterior ROIs can relate to behavioral performance in visual detection tests in hemianopic patients with both left and right lesions. To this aim, the

relationship between hemianopic patients' perceptual sensitivity in their blind field at the computerized visual field test in the fixed-eyes condition and their indices of alpha and theta reactivity was explored separately for each ROI. Simple correlations were performed and, to account for multiple comparisons,  $p$  values were adjusted with Holm–Bonferroni corrections. Adjusted  $p$  values (adj.  $ps$ ) are reported. No significant correlation between the mean D prime in the blind field and the indices of both alpha and theta reactivity was found in the three ROIs examined (all adj.  $ps > 0.171$ ), suggesting that the residual alpha and theta reactivity in hemianopic patients is not associated with the sparing of their visual field. In addition, the relationship between hemianopic patients' perceptual sensitivity in their blind field at the computerized visual field test in the eye-movements condition and their indices of alpha and theta reactivity was explored separately for each ROI. Again, simple correlations were performed, and, to account for multiple comparisons,  $p$  values were adjusted with Holm–Bonferroni corrections. Adjusted  $p$  values (adj.  $ps$ ) are reported. No significant correlation between the mean D prime in the blind field and the indices of both alpha and theta reactivity was found in the three ROIs examined (all adj.  $ps > 0.366$ ), indicating no relationship between alpha and theta reactivity and patients' ability to compensate for the field loss with eye movements.

### Discussion

The present EEG study compared eyes-closed and eyes-open resting conditions in posterior-lesioned patients with visual field defects and age-matched control anterior-lesioned patients and healthy participants. The results showed that all groups presented a significant desynchronization of alpha power at the opening of the eyes, across all scalp regions. Specifically, decreased alpha power during the eyes-open condition compared to the eyes-closed condition was found in posterior, central and anterior sites, in both the left and the right hemispheres. Nevertheless, alpha reactivity induced by eyes-opening was reduced in both left- and right-lesioned hemianopic patients. This may indicate that hemianopics are characterized by altered task-independent activation of the visual system. More precisely, left-lesioned hemianopic patients exhibited a reduced alpha reactivity in the anterior and the central scalp regions; whereas, right-lesioned hemianopics showed an overall reduction of alpha reactivity all over the scalp, i.e. in the anterior, central and posterior ROIs, suggesting a more pronounced and extended dysfunction after lesions to the right hemisphere.

The altered alpha reactivity in hemianopics is in line with previous evidence, demonstrating that left and right posterior brain lesions selectively impair alpha oscillatory parameters during eyes-closed resting state, resulting in a slowdown

of IAF and an interhemispheric power imbalance, in favor of the intact hemisphere (Pietrelli et al. 2019). Importantly, the present results show that, regardless the presence of alterations to the baseline alpha oscillatory activity due to posterior lesions, hemianopic patients retain a residual reactivity in the alpha range to the opening of the eyes, which is evident, but reduced, after damage to the posterior cortices. This residual reactivity in the alpha band seems also in agreement with previous reports showing that hemianopic patients can retain stimulus-related alpha changes, induced by the presentation of stimuli in the blind field (Grasso et al. 2020; Sanchez-Lopez et al. 2019).

Converging evidence report that eyes-closed and eyes-open conditions correspond to distinct neurophysiological states and functional connectivity patterns (Xu et al. 2014; Jao et al. 2012). More precisely, eyes-closed resting state has been linked to a state of greater network integration, with reduced modularity and increased global efficiency (Xu et al. 2014; Bianciardi et al. 2009). In contrast, eyes-open resting state has been associated with greater modularity, which is thought to facilitate increased local efficiency, subserving task-dependent processing (Allen et al. 2018; Xu et al. 2014). In this perspective, the alpha desynchronization in the transition from the eyes-closed to the eyes-open condition might represent a widespread cortical activation, supporting the focal decreases in non-alpha bands, related to local processing which gathers visual information (Barry and De Blasio 2017; Barry et al. 2007; Marx et al. 2003). Thus, the present findings indicate that focal unilateral lesions to posterior cortices can induce global and widespread alterations in alpha cortical reactivity, in line with the notion of a central role of low-level visual cortices in coordinating and propagating alpha oscillations in the visual system (Hindriks et al. 2015).

Notably, right hemispheric posterior lesions result in a more severe reactivity reduction, distributed all over the scalp, while in left-lesioned patients, posterior cortices retain a normal alpha reactivity. This observation is in agreement with previous findings on hemianopics showing that posterior right lesions had more detrimental consequences on alpha oscillatory impairments, with stronger IAF reduction and interhemispheric power imbalance, relative to posterior left lesions (Pietrelli et al. 2019). This seems to suggest a specialization of the right hemisphere in generating and distributing alpha oscillatory patterns. In agreement, evidence has shown that the right hemisphere is capable of modulating alpha oscillations to both facilitate detection of visual stimuli and suppress visual irrelevant information (Gallotto et al. 2020), suggesting a more specialized role of this hemisphere in allocating visuo-spatial attentional resources and tuning visual perceptual abilities through alpha oscillatory patterns.

In addition, in the present study, patients with right lesions also showed a peculiar pattern of reactivity at the opening of the eyes in the theta frequency range. More precisely, while healthy participants, control patients and also hemianopics with left lesions demonstrated a typical desynchronization in the theta range over centro-anterior regions at the opening of the eyes (Barry and De Blasio 2017; Barry et al. 2007), hemianopics with right lesions revealed no significant change over central and anterior regions of the scalp and an atypical increase of theta power over posterior regions, in the transition from eyes-closed to eyes-open resting state. Focal alterations in the theta range after brain damage has been consistently reported in eyes-closed resting state, regardless the site of the lesion. Specifically, increased theta power in perilesional areas has been described in patients with stroke (Chu et al. 2015; Laaksonen et al. 2013; Dubovik et al. 2012; Tecchio et al. 2005; Butz et al. 2004), likely reflecting reorganization of the lesioned cortices (Rabiller et al. 2015; Carmichael and Chesselet 2002). Previous reports comparing hemianopics and control patients with anterior lesions also showed that post-lesional theta power increase at eyes-closed rest is evident after lesions both to posterior and anterior cortices (Pietrelli et al. 2019). However, the current findings show that theta reactivity to the opening of the eyes seems selectively compromised only after posterior right lesions, which adds to the right-lesioned hemianopics' reduced alpha reactivity.

The dysfunctional reactivity in the theta range observed in right-lesioned hemianopics might reflect the disruption of the typical focal oscillatory changes occurring at the opening of the eyes, which have been associated with stimulus processing and, hence, to low-level unstructured responses to visual stimuli during eyes-open resting state (Barry and De Blasio 2017; Gevins et al. 1997; Grillon and Buchsbaum 1986). The combination of impairments in the alpha and the theta range observed in hemianopics with right lesions suggests the presence of a stronger impairment in functional reactivity to the opening of the eyes, compared to hemianopic patients with left lesions, involving both global and local processes. Indeed, right posterior lesions seem to primarily weaken the typical reduction of alpha power at the opening of the eyes, reflecting the widespread cortical activation, gating and controlling visual inputs at the opening of the eyes; then, as a consequence, right lesions also impair focal theta reduction, which is linked with modular processing and local cortical activations (Barry and De Blasio 2017; Gevins et al. 1997; Grillon and Buchsbaum 1986). This seems in line with the notion that alpha oscillations, propagating from posterior visual cortices to higher-order cortical sites (Hindriks et al. 2015), might play a special role in coordinating widespread oscillatory activity and orchestrating focal processing in non-alpha frequency bands, which might support

visual processing at the opening of the eyes (Barry and De Blasio 2017).

In this perspective, the present findings suggest a possible role of the intact right hemisphere in compensating the disruption of alpha oscillatory reactivity due to left posterior lesions. Indeed, we can speculate that in left-lesioned hemianopsics the right intact hemisphere might contribute to preserve alpha oscillatory activity in the posterior cortices, with a consequent spared normal reactivity in the theta range.

Although these results suggest that alterations in the reactivity patterns at the opening of the eyes are a dysfunctional feature of patients suffering posterior brain damage, it is notable that reactivity indices both in the alpha and in the theta band did not show any correlation with visual performance, both when hemianopic patients were required to fixate a central fixation point and when exploratory eye movements were allowed. This finding is in line with evidence showing that alpha desynchronization at the opening of the eyes occurs independently of external sensory input, for instance in blind individuals (Hüfner et al. 2009) and in condition of complete darkness (Ben-Simon et al. 2013; Boytsova and Danko 2010; Marx et al. 2003). This is consistent with the hypothesis that alpha reactivity at the opening of the eyes does not reflect visual processing per se, but represents a prerequisite for alpha visual-related modulation by external sensory stimulation (Ben-Simon et al. 2012; Klimesch et al. 2007). In line with this perspective, a wide body of research converges on the notion that various aspects of visual performance are rather linked with different alpha oscillatory parameters (Brüers and Van Rullen 2018; Van Rullen 2016), with individual alpha frequency representing a measure of temporal resolution of visual perception (Cecere et al. 2015; Samaha and Postle 2015; Klimesch et al. 2007; Valera et al. 1981) and alpha power (Romei et al. 2008a, b) and phase (Mathewson et al. 2009, 2012; Bush et al. 2009) reflecting variations in cortical excitability and visual awareness. As a consequence, the present findings suggest that EEG reactivity indices should be interpreted as intrinsic electrophysiological biomarkers of the functional effects of posterior brain lesions.

Overall, the current results add to previous knowledge on hemispheric asymmetries in visuo-spatial abilities (Duecker et al. 2015; Heilman and Van Den Abell 1980; Kinsbourne 1977) and suggest a prominent role of the posterior cortices of the right hemisphere in organizing and distributing oscillatory alpha activity, to support the local functioning of the visual system at rest. This is in favor of a dominance of the right hemisphere in perceptual and visuo-spatial processing (Corballis et al. 2002; Nicholls et al. 2002; Jewell and McCourt 2000; Gitelman et al. 1999; McCourt and Jewell 1999; McCourt and Olafson 1997; Nobre et al. 1997; Mattingley et al. 1994; Heilman et al. 1984; Heilman and

Valenstein 1979; Bisiach and Luzzatti 1978; Bueichekú et al. 2020) and emphasize the underlying role of complex oscillatory patterns.

**Supplementary Information** The online version contains supplementary material available at <https://doi.org/10.1007/s00429-021-02279-8>.

**Acknowledgements** This work was supported by grants from the Ministero Istruzione Università e Ricerca PRIN 2017 (2017TBA4KS\_003) to Caterina Bertini

**Funding** Open access funding provided by Alma Mater Studiorum - Università di Bologna within the CRUI-CARE Agreement. This work was supported by grants from the Ministero Istruzione Università e Ricerca PRIN 2017 (2017TBA4KS\_003) to Caterina Bertini.

**Availability of data and material** The datasets generated during and/or analyzed during the current study are available from the corresponding author on reasonable request.

**Code availability** Custom codes used for analyses are available from the corresponding author on reasonable request.

## Declarations

**Conflicts of interest** The authors have no conflicts of interest to declare that are relevant to the content of this article.

**Ethics approval** The study was designed and performed in accordance with the ethical principles of the Declaration of Helsinki and was approved by the Ethics Committee of the Regional Health Service Romagna (CEROM; n.2300).

**Consent to participate** Informed consent was obtained from all individual participants included in the study.

**Open Access** This article is licensed under a Creative Commons Attribution 4.0 International License, which permits use, sharing, adaptation, distribution and reproduction in any medium or format, as long as you give appropriate credit to the original author(s) and the source, provide a link to the Creative Commons licence, and indicate if changes were made. The images or other third party material in this article are included in the article's Creative Commons licence, unless indicated otherwise in a credit line to the material. If material is not included in the article's Creative Commons licence and your intended use is not permitted by statutory regulation or exceeds the permitted use, you will need to obtain permission directly from the copyright holder. To view a copy of this licence, visit <http://creativecommons.org/licenses/by/4.0/>.

## References

- Allen EA, Damaraju E, Eichele T, Wu L, Calhoun VD (2018) EEG signatures of dynamic functional network connectivity states. *Brain Topogr* 31(1):101–116. <https://doi.org/10.1007/s10548-017-0546-2>
- Barry RJ, De Blasio FM (2017) EEG differences between eyes-closed and eyes-open resting remain in healthy ageing ☆. *Biol Psychol* 129(April):293–304. <https://doi.org/10.1016/j.biopsycho.2017.09.010>

- Barry RJ, Clarke AR, Johnstone SJ, Magee CA, Rushby JA (2007) EEG differences between eyes-closed and eyes-open resting conditions. *Clin Neurophysiol* 118:2765–2773. <https://doi.org/10.1016/j.clinph.2007.07.028>
- Başar E (1999) Brain function and oscillations: volume ii: integrative brain function. Neurophysiology and cognitive processes. Springer series in synergetics. Springer, Berlin Heidelberg <https://doi.org/10.1007/978-3-642-59893-7>
- Ben-Simon E, Podlipsky I, Okon-singer H, Gruberger M, Cvetkovic D, Intrator N, Hendler T (2012) The dark side of the alpha rhythm: fMRI evidence for induced alpha modulation during complete darkness. *Eur J Neurosci* 37:795–803. <https://doi.org/10.1111/ejn.12083>
- Berger H (1929) Über das Elekrenkephalogramm des Menschen, *Archiv f. Psychiatrie* 278(1875). <https://doi.org/10.1007/BF01797193>
- Bianciardi M, Fukunaga M, Gelderen P, Van Horovitz SG, De JA, Duyn JH (2009) NIH Public Access 45(1): 160–168. <https://doi.org/10.1016/j.neuroimage.2008.10.034> Modulation.
- Bisiach E, Luzzatti C (1978) Unilateral neglect of representational space. *Cortex* 14(1):129–133
- Bolognini N, Rasi F, Coccia M, Ladavas E (2005) Visual search improvement in hemianopic patients after audio-visual stimulation. *Brain* 128(12):2830–2842
- Boytsova Yu A, Danko SG (2010) EEG differences between resting states with eyes open and closed in darkness institute of the human brain, Russian Academy of Sciences. *Hum Physiol* 36(3): 367–369. <https://doi.org/10.1134/S0362119710030199>
- Bruder GE, Tenke CE, Warner V, Nomura Y, Grillon C, Hille J, Leite P, Weissman MM (2005) Electroencephalographic measures of regional hemispheric activity in offspring at risk for depressive disorders. *Biol Psychiat* 57:328–335
- Bruder GE, Tenke CE, Warner V, Weissman MM (2007) Grandchildren at high and low risk for depression differ in EEG measures of regional brain asymmetry. *Biol Psychiat* 62(11):1317–1323. <https://doi.org/10.1016/j.biopsych.2006.12.006>
- Brüers S, Van Rullen R (2018) Alpha power modulates perception independently of endogenous factors. *Front Neurosci* 12:279. <https://doi.org/10.3389/fnins.2018.00279>
- Bueichekú E, Miró-Padilla A, Ávila C (2020) Functional connectivity at rest captures individual differences in visual search. *Brain Struct Funct* 225(2):537–549
- Busch NA, Dubois J, VanRullen R (2009) The phase of ongoing EEG oscillations predicts visual perception. *J Neurosci* 29(24):7869–7876. <https://doi.org/10.1523/JNEUROSCI.0113-09.2009>
- Butz M, Gross J, Timmermann L, Moll M, Freund H-J, Witte OW, Schnitzler A (2004) Perilesional pathological oscillatory activity in the magnetoencephalogram of patients with cortical brain lesions. *Neurosci Lett* 355(1):93–96. <https://doi.org/10.1016/j.neulet.2003.10.065>
- Capilla A, Schoffelen J-M, Paterson G, Thut G, Gross J (2014) Dissociated  $\alpha$ -band modulations in the dorsal and ventral visual pathways in visuospatial attention and perception. *Cereb Cortex* 24(2):550–561. <https://doi.org/10.1093/cercor/bhs343>
- Carmichael ST, Chesselet M-F (2002) Synchronous neuronal activity is a signal for axonal sprouting after cortical lesions in the adult. *J Neurosci* 22(14):6062–6070. <https://doi.org/10.1523/JNEUROSCI.22-14-06062.2002>
- Cecere R, Rees G, Romei V (2015) Individual differences in alpha frequency drive crossmodal illusory perception. *Curr Biol* 25(2):231–235. <https://doi.org/10.1016/j.cub.2014.11.034>
- Chu RKO, Braun AR, Meltzer JA (2015) MEG-based detection and localization of perilesional dysfunction in chronic stroke. *NeuroImage Clin* 8(January): 157–69. <https://doi.org/10.1016/j.nicl.2015.03.019>
- Çiçek M, Nalçacı E, Kalaycıoğlu C (2003) Line bisection task performance and resting EEG alpha power. *Int J Neurosci* 113(6):849–866. <https://doi.org/10.1080/00207450390200981>
- Colombo C, Gambini O, Macciardi F, Bellodi L, Sacchetti E, Vita A, Cattaneo R, Scarone S (1989) Alpha reactivity in schizophrenia and in schizophrenic spectrum disorders: demographic, clinical and hemispheric assessment. *Int J Psychophysiol* 7(1):47–54. [https://doi.org/10.1016/0167-8760\(89\)90030-5](https://doi.org/10.1016/0167-8760(89)90030-5)
- Corballis PM, Funnell MG, Gazzaniga MS (2002) Hemispheric asymmetries for simple visual judgments in the split brain. *Neuropsychologia* 40(4):401–410. [https://doi.org/10.1016/S0028-3932\(01\)00100-2](https://doi.org/10.1016/S0028-3932(01)00100-2)
- Delorme A, Makeig S (2004) EEGLAB: an open source toolbox for analysis of single-trial EEG dynamics including independent component analysis. *J Neurosci Methods* 134(1):9–21. <https://doi.org/10.1016/J.JNEUMETH.2003.10.009>
- Dubovik S, Pignat J-M, Ptak R, Aboulaia T, Allet L, Gillibert N, Magnin C et al (2012) The behavioral significance of coherent resting-state oscillations after stroke. *Neuroimage* 61(1):249–257. <https://doi.org/10.1016/j.neuroimage.2012.03.024>
- Duecker F, Sack AT (2015) The hybrid model of attentional control: new insights into hemispheric asymmetries inferred from TMS research. *Neuropsychologia* 74:21–29
- Gallotto S, Duecker F, Oever ST, Schuhmann T, de Graaf TA, Sack AT (2020) Relating alpha power modulations to competing visuospatial attention theories. *NeuroImage*, 207(116429). <https://doi.org/10.1016/j.neuroimage.2019.116429>
- Gevens A, Smith ME, McEvoy L, Yu D (1997) High-resolution EEG mapping of cortical activation related to working memory: effects of task difficulty, type of processing, and practice. *Cereb Cortex* 7(4):374–385. <https://doi.org/10.1093/cercor/7.4.374>
- Gitelman DR, Nobre AC, Parrish TB, LaBar KS, Kim YH, Meyer JR, Mesulam M (1999) A large-scale distributed network for covert spatial attention: further anatomical delineation based on stringent behavioural and cognitive controls. *Brain* 122(Pt 6):1093–1106. <https://doi.org/10.1093/brain/122.6.1093>
- Grasso PA, Pietrelli M, Zanon M, Ladavas E, Bertini C (2020) Alpha oscillations reveal implicit visual processing of motion in hemianopia. *Cortex* 122:81–96. <https://doi.org/10.1016/j.cortex.2018.08.009>
- Grillon C, Buchsbaum MS (1986) Computed EEG topography of response to visual and auditory stimuli. *Electroencephalogr Clin Neurophysiol* 63(1):42–53. [https://doi.org/10.1016/0013-4694\(86\)90061-1](https://doi.org/10.1016/0013-4694(86)90061-1)
- Heilman KM, Valenstein E (1979) Mechanisms underlying hemispatial neglect. *Ann Neurol Off J Am Neurol Assoc Child Neurol Soc* 5(2):166–170
- Heilman KM, Van Den Abell T (1980) Right hemisphere dominance for attention: the mechanism underlying hemispheric asymmetries of inattention (neglect). *Neurology* 30(3):327–327
- Heilman KM, Valenstein E, Watson RT (1984) Neglect and related disorders. In: *Seminars in neurology*, Vol. 4. No. 02. Thieme Medical Publishers, Inc.
- Hindriks R, Woolrich M, Luckhoo H, Joensson M, Mohseni H, Kringelbach ML, Deco G (2015) Role of white-matter pathways in coordinating alpha oscillations in resting visual cortex. *Neuroimage* 106(February):328–339. <https://doi.org/10.1016/j.neuroimage.2014.10.057>
- Hüfner K, Stephana T, Flanagina VL, Deutschländer A, Steinb A, Kallaa R, Dera T, Fesl G, Jahna K, Struppa M, Brandt T (2009) Differential effects of eyes open or closed in darkness on brain activation patterns in blind subjects. *Neurosci Lett* 466(2009):30–34. <https://doi.org/10.1016/j.neulet.2009.09.010>
- Jao T, Vértes PE, Alexander-Bloch AF, Tang I-N, Yu Y-C, Chen J-H, Bullmore ET (2013) Volitional eyes opening perturbs brain dynamics and functional connectivity regardless of light input.

- Neuroimage 69(April):21–34. <https://doi.org/10.1016/j.neuroimage.2012.12.007>
- Jensen O, Mazaheri A (2010) Shaping functional architecture by oscillatory alpha activity: gating by inhibition. *Front Hum Neurosci* 4:186. <https://doi.org/10.3389/fnhum.2010.00186>
- Jewell G, McCourt ME (2000) Pseudoneglect: a review and meta-analysis of performance factors in line bisection tasks. *Neuropsychologia* 38(1):93–110. [https://doi.org/10.1016/S0028-3932\(99\)00045-7](https://doi.org/10.1016/S0028-3932(99)00045-7)
- Kinsbourne M (1977) Hemi-neglect and hemisphere rivalry. *Adv Neurol* 18:41–49
- Klimesch W (1999) EEG alpha and theta oscillations reflect cognitive and memory performance: a review and analysis. *Brain Res Rev* 29(2–3):169–195. [https://doi.org/10.1016/S01650173\(98\)00056-3](https://doi.org/10.1016/S01650173(98)00056-3)
- Klimesch W, Sauseng P, Hanslmayr S (2007) EEG alpha oscillations: the inhibition–timing hypothesis. *Brain Res Rev* 53(1):63–88. <https://doi.org/10.1016/J.BRAINRESREV.2006.06.003>
- Laaksonen K, Helle L, Parkkonen L, Kirveskari EP, Mäkelä JP, Mustanoja S, Tatlisumak T, Kaste M, Nina F (2013) Alterations in spontaneous brain oscillations during stroke recovery. *PLoS ONE* 8(4):e61146. <https://doi.org/10.1371/journal.pone.0061146>
- Lasaponara S, D’Onofrio M, Pinto M, Dragone A, Menicagli D, Buetti D, De Lucia M, Tomaiuolo F, Doricchi F (2018) EEG correlates of preparatory orienting, contextual updating, and inhibition of sensory processing in left spatial neglect. *J Neurosci* 38(15):3792–3808. <https://doi.org/10.1523/JNEUROSCI.2817-17.2018>
- Lasaponara S, Pinto M, Aiello M, Tomaiuolo F, Doricchi F (2019) The hemispheric distribution of  $\alpha$ -band EEG activity during orienting of attention in patients with reduced awareness of the left side of space (spatial neglect). *J Neurosci* 39(22):4332–4343. <https://doi.org/10.1523/jneurosci.2206-18.2019>
- Marx E, Stephan T, Nolte A, Deutschla A, Seelos KC, Dieterich M, Brandt T (2003) Eye closure in darkness animates sensory systems. *Neuroimage*. [https://doi.org/10.1016/S10538119\(03\)00150-2](https://doi.org/10.1016/S10538119(03)00150-2)
- Mathewson KE, Gratton G, Fabiani M, Beck DM, Ro T (2009) To see or not to see : prestimulus alpha phase predicts visual awareness. *The Journal of Neuroscience*, 29(9), 2725–2732. <https://doi.org/https://doi.org/10.1523/JNEUROSCI.3963-08.2009>
- Mathewson KE, Prudhomme C, Fabiani M, Beck DM, Lleras A, Gratton G (2012) Making waves in the stream of consciousness: entraining oscillations in EEG alpha and fluctuations in visual awareness with rhythmic visual stimulation. *J Cogn Neurosci* 24(12):2321–2333. [https://doi.org/10.1162/jocn\\_a\\_00288](https://doi.org/10.1162/jocn_a_00288)
- Mattingley JB, Bradshaw JL, Nettleton NC, Bradshaw JA (1994) Can task-specific perceptual bias be distinguished from unilateral neglect? *Neuropsychologia* 32(7):805–817
- McCourt ME, Jewell G (1999) Visuospatial attention in line bisection: stimulus modulation of pseudoneglect. *Neuropsychologia* 37(7):843–855. [https://doi.org/10.1016/S0028-3932\(98\)00140-7](https://doi.org/10.1016/S0028-3932(98)00140-7)
- McCourt ME, Olafson C (1997) Cognitive and perceptual influences on visual line bisection: psychophysical and chronometric analyses of pseudoneglect. *Neuropsychologia* 35(3):369–380. [https://doi.org/10.1016/S0028-3932\(96\)00143](https://doi.org/10.1016/S0028-3932(96)00143)
- Metzger LJ, Paige SR, Carson MA, Lasko NB, Paulus LA, Pitman RK, Orr SP (2004) PTSD arousal and depression symptoms associated with increased right-sided parietal EEG asymmetry. *J Abnorm Psychol* 113(2):324–329. <https://doi.org/10.1037/0021>
- Nalçacı E, Kalaycioglu C, Yavuzer S (1995) The effect of handedness and gender on EEG alpha activity during verbal memory tasks. *J Ankara Med Sch* 17:201–209
- Nicholls ME, Roberts GR (2002) Can free-viewing perceptual asymmetries be explained by scanning, pre-motor or attentional biases? *Cortex J Devot Study Nervous Syst Behav* 38(2):113–136. [https://doi.org/10.1016/S0010-9452\(08\)70645-2](https://doi.org/10.1016/S0010-9452(08)70645-2)
- Nicholls MER, Bradshaw JL, Mattingley JB (1999) Free-viewing perceptual asymmetries for the judgement of brightness, numerosity and size. *Neuropsychologia* 37(3):307–314. [https://doi.org/10.1016/S0028-3932\(98\)00074-8](https://doi.org/10.1016/S0028-3932(98)00074-8)
- Nobre AC, Sebestyen GN, Gitelman DR, Mesulam MM, Frackowia RS, Frith CD (1997) Functional localization of the system for visuospatial attention using positron emission tomography. *Brain* 120(3):515–533. <https://doi.org/10.1093/brain/120.3.515>
- O’Boyle MW, Alexander JE, Benbow CP (1991) Enhanced right hemisphere activation in the mathematically precocious: a preliminary EEG investigation. *Brain Cogn* 17:138–153
- Ocklenburg S, Friedrich P, Schmitz J, Schlüter C, Genc E, Güntürkün O, Peterburs J, Grimshaw G (2019) Beyond frontal alpha: investigating hemispheric asymmetries over the EEG frequency spectrum as a function of sex and handedness. *Laterality* 24(5):505–524. <https://doi.org/10.1080/1357650X.2018.1543314>
- Papousek I, Schuster G (1999) Eeg correlates of behavioural laterality: right-handedness. *Percept Mot Skills* 89(2):403–411. <https://doi.org/10.2466/pms.1999.89.2.403>
- Passamonti C, Bertini C, Ládavas E (2009) Audio-visual stimulation improves oculomotor patterns in patients with hemianopia. *Neuropsychologia* 47(2):546–555
- Pfurtscheller G, Neuper C, Mohl W (1994) Event-related desynchronization (ERD) during visual processing. *Int J Psychophysiol* 16(2):147–153. [https://doi.org/10.1016/0167-8760\(89\)90041-X](https://doi.org/10.1016/0167-8760(89)90041-X)
- Pietrelli M, Zanon M, Ládavas E, Grasso PA, Romei V, Bertini C (2019) Posterior brain lesions selectively alter alpha oscillatory activity and predict visual performance in hemianopic patients. *Cortex* 121:347–361. <https://doi.org/10.1016/j.cortex.2019.09.008>
- Pirondini E, Goldshuv-Ezra N, Zinger N, Britz J, Soroker N, Deouell LY, Ville DV (2020) Resting-state EEG topographies: reliable and sensitive signatures of unilateral spatial neglect. *NeuroImage Clin* 26:102237. <https://doi.org/10.1016/j.nicl.2020.102237>
- Rabiller G, He J-H, Nishijima Y, Wong A, Liu J (2015) Perturbation of brain oscillations after ischemic stroke: a potential biomarker for post-stroke function and therapy. *Int J Mol Sci* 16(10):25605–25640. <https://doi.org/10.3390/ijms161025605>
- Romei V, Brodbeck V, Michel C, Amedi A, Pascual-Leone A, Thut G (2008a) Spontaneous fluctuations in posterior  $\alpha$ -band EEG activity reflect variability in excitability of human visual areas. *Cereb Cortex* 18(9):2010–2018. <https://doi.org/10.1093/cercor/bhm229>
- Romei V, Rihs T, Brodbeck V, Thut G (2008b) Resting electroencephalogram alpha-power over posterior sites indexes baseline visual cortex excitability. *NeuroReport* 19(2):203. <https://doi.org/10.1097/WNR.0b013e3282f454c4>
- Rorden C, Brett M (2000) Stereotaxic display of brain lesions. *Behav Neurol* 12(4):191–200
- Rorden C, Karnath H-O, Bonilha L (2007) Improving lesion-symptom mapping. *J Cogn Neurosci* 19(7):1081–1088. <https://doi.org/10.1162/jocn.2007.19.7.1081>
- Rosanova M, Casali A, Bellina V, Resta F, Mariotti M, Massimini M (2009) Natural frequencies of human corticothalamic circuits. *J Neurosci Off J Soc Neurosci* 29(24):7679–7685. <https://doi.org/10.1523/JNEUROSCI.0445-09.2009>
- Sadaghiani S, Kleinschmidt A (2016) Brain networks and  $\alpha$ -oscillations: structural and functional foundations of cognitive control. *Trends Cogn Sci* 20(11):805–817. <https://doi.org/10.1016/j.tics.2016.09.004>
- Samaha J, Postle BR (2015) The speed of alpha-band oscillations predicts the temporal resolution of visual perception. *Curr Biol* 25(22):2985–2990. <https://doi.org/10.1016/j.cub.2015.10.007>
- Sanchez-Lopez J, Pedersini CA, Di Russo F, Cardobi N, Fonte C, Varalta V, Prior M, Smania N, Savazzi S, Marzi CA (2019) Visually evoked responses from the blind field of hemianopic patients. *Neuropsychologia* 128(May):127–139. <https://doi.org/10.1016/j.neuropsychologia.2017.10.008>

- Sauseng P, Klimesch W, Stadler W, Schabus M, Doppelmayr M, Hanslmayr S, Gruber WR, Birbaumer N (2005) A shift of visual spatial attention is selectively associated with human EEG alpha activity. *Eur J Neurosci* 22(11):2917–2926. <https://doi.org/10.1111/j.1460-9568.2005.04482.x>
- Stewart JL, Towers DN, Coan JA, Allen JJB (2011) The oft-neglected role of parietal EEG asymmetry and risk for major depressive disorder. *Psychophysiology* 48(1):82–95. <https://doi.org/10.1111/j.1469-8986.2010.01035.x>
- Tecchio F, Zappasodi F, Pasqualetti P, Tombini M, Salustri C, Oliviero O, Pizzella V, Vernieri F, Rossini PM (2005) Rhythmic brain activity at rest from rolandic areas in acute mono-hemispheric stroke: a magnetoencephalographic study. *Neuroimage* 28(1):72–83. <https://doi.org/10.1016/j.neuroimage.2005.05.051>
- Valera FJ, Toro A, John ER, Schwartz EL (1981) Perceptual framing and cortical alpha rhythm. *Neuropsychologia* 19(5):675–686. [https://doi.org/10.1016/0028-3932\(81\)90005-1](https://doi.org/10.1016/0028-3932(81)90005-1)
- van der Hiele K, Bollen ELEM, Vein AA, Reijntjes RHAM, Westendorp RGJ, van Buchem MA et al (2008) EEG markers of future cognitive performance in the elderly. *J Clin Neurophysiol* 25:83–89. <https://doi.org/10.1097/WNP.0b013e31816a5b25>
- VanRullen R (2016) Perceptual cycles. *Trend Cogn Sci* 20(10):723–735. <https://doi.org/10.1016/j.tics.2016.07.006>
- Vázquez Marrufo M, Vaquero E, Cardoso MJ, Gómez CM (2001) Temporal evolution of alpha and beta bands during visual spatial attention. *Brain Res Cogn Brain Res* 12(2):315–320. [https://doi.org/10.1016/s0926-6410\(01\)00025-8](https://doi.org/10.1016/s0926-6410(01)00025-8)
- Wilson B, Cockburn J, Halligan P (1987) Development of a behavioral test of visuospatial neglect. *Arch Phys Med Rehabil* 68(2):98–10
- Xu P, Xiong XC, Xue Q, Tian Y, Peng Y, Zhang R, Li PY, Wang YP, Yao DZ (2014) Recognizing mild cognitive impairment based on network connectivity analysis of resting EEG with zero reference. *Physiol Meas* 35(7):1279–1298. <https://doi.org/10.1088/0967-3334/35/7/1279>

**Publisher's Note** Springer Nature remains neutral with regard to jurisdictional claims in published maps and institutional affiliations.