



ALMA MATER STUDIORUM
UNIVERSITÀ DI BOLOGNA

ARCHIVIO ISTITUZIONALE
DELLA RICERCA

Alma Mater Studiorum Università di Bologna Archivio istituzionale della ricerca

Modeling the time-related fluctuations of AFP and PIVKA-II serum levels in patients with cirrhosis undergoing surveillance for hepatocellular carcinoma

This is the final peer-reviewed author's accepted manuscript (postprint) of the following publication:

Published Version:

Ricco, G., Cosma, C., Bedogni, G., Biasiolo, A., Guarino, M., Pontisso, P., et al. (2020). Modeling the time-related fluctuations of AFP and PIVKA-II serum levels in patients with cirrhosis undergoing surveillance for hepatocellular carcinoma. DISEASE MARKERS. SECTION A, CANCER BIOMARKERS, 29(2), 189-196 [10.3233/CBM-190118].

Availability:

This version is available at: <https://hdl.handle.net/11585/959809> since: 2024-02-21

Published:

DOI: <http://doi.org/10.3233/CBM-190118>

Terms of use:

Some rights reserved. The terms and conditions for the reuse of this version of the manuscript are specified in the publishing policy. For all terms of use and more information see the publisher's website.

This item was downloaded from IRIS Università di Bologna (<https://cris.unibo.it/>).
When citing, please refer to the published version.

(Article begins on next page)

This is the accepted manuscript of:

Ricco G, Cosma C, Bedogni G, Biasiolo A, Guarino M, Pontisso P, Morisco F, Oliveri F, Cavallone D, Bonino F, Plebani M, Brunetto MR.

Modeling the time-related fluctuations of AFP and PIVKA-II serum levels in patients with cirrhosis undergoing surveillance for hepatocellular carcinoma.

Cancer Biomark. 2020;29(2):189-196

The final published version is available online at: <https://doi.org/10.3233/cbm-190118>

Rights / License:

The terms and conditions for the reuse of this version of the manuscript are specified in the publishing policy. For all terms of use and more information see the publisher's website.

This item was downloaded from IRIS Università di Bologna (<https://cris.unibo.it/>)

When citing, please refer to the published version.

Modeling the time-related fluctuations of AFP and PIVKA-II serum levels in patients with cirrhosis undergoing surveillance for hepatocellular carcinoma

Gabriele Ricco^{a,h}, Chiara Cosma^b, Giorgio Bedogni^c, Alessandra Biasiolo^d, Maria Guarino^e, Patrizia Pontisso^d, Filomena Morisco^e, Filippo Oliveri^a, Daniela Cavallone^a, Ferruccio Bonino^{c,f,g}, Mario Plebani^b and Maurizia Rossana Brunetto^{a,f,h,*}

^aHepatology Unit and Laboratory of Molecular Genetics and Pathology of Hepatitis Viruses, Reference Center of the Tuscany Region for Chronic Liver Disease and Cancer, University Hospital of Pisa, Pisa, Italy

^bDepartment of Laboratory Medicine, University-Hospital of Padua, Padua, Italy

^cItalian Liver Foundation (Fondazione Italiana Fegato, FIF), Basovizza, Trieste, Italy

^dDepartment of Medicine, University of Padua, Padua, Italy

^eGastroenterology Unit, Department of Clinical Medicine and Surgery, University of Naples “Federico II”, Naples, Italy

^fInstitute of Biostructure and Bioimaging, National Research Council, Naples, Italy

^gUniversity of Pittsburgh Medical Center Institute for Health, Chianciano Terme, Siena, Italy

^hInternal Medicine, Department of Clinical and Experimental Medicine, University of Pisa, Pisa, Italy

Abstract.

BACKGROUND: The time-related variability of HCC biomarkers has not been investigated so far.

OBJECTIVE: To assess the changes of alpha-fetoprotein (AFP) and protein induced by vitamin-K absence/antagonist-II (PIVKA-II) in patients with HCC (HCC+) as compared to patients without HCC (HCC-).

METHODS: AFP and PIVKA-II were measured by a single laboratory using an automated chemiluminescent-enzyme-immunoassay (Fujirebio Inc., Tokyo, Japan) in 1163 sera of 418 cirrhotics (31.1% HBV, 58.6% HCV, 10.3% non-viral etiology) undergoing ultrasound HCC surveillance. The mean (range) number of effective time-points available for analysis was 2.8 (2.0 to 3.0); 124 patients with HCC were matched with 294 who remained HCC free for at least 12 months after the last specimen. AFP and PIVKA-II changes were estimated over time by means of a random-effect generalized least squares (RE-GLS) regression model under the missingness at random assumption.

RESULTS: Patients with and without HCC had comparable chronic liver disease etiology and staging. AFP/PIVKA-II median (25th; 75th percentile) values at the latest time-point were 4.2 (2.6; 8.6) ng/mL/32 (25; 42) mAU/mL in HCC- and 8.4 (4.4; 32.1) ng/mL/66 (32; 192) mAU/mL in HCC+ ($p < 0.001$). Log₁₀AFP and log₁₀PIVKA-II time-changes differed in HCC+ and HCC- patients. In HCC+ patients, both log₁₀AFP and log₁₀PIVKA-II showed an increasing trend over time. In HCC- patients, log₁₀PIVKA-II variations were minimal as compared to log₁₀AFP variations. The percent increase of log₁₀AFP at 6 months vs. baseline was 11% (95%CI 5 to 17%) and 5% (95%CI 1 to 8%) for log₁₀PIVKA-II in HCC+ vs. HCC- patients.

CONCLUSIONS: The present retrospective study of the biological variability of AFP and PIVKA-II suggests that their time-related changes may serve as potential predictors of HCC. This topic needs to be addressed by longitudinal studies.

Keywords: AFP, biomarkers, cirrhosis, hepatocellular carcinoma, PIVKA-II, surveillance

*Corresponding author: Maurizia Rossana Brunetto, Hepatology Unit and Laboratory of Molecular Genetics and Pathology of Hepatitis Viruses, Reference Center of the Tuscany Region for Chronic

Liver Disease and Cancer, University Hospital of Pisa, Via Paradisa 2, Pisa, 56124, Italy. Tel.: +39 50 99 68 57; Fax: +39 50 99 54 57; E-mail: maurizia.brunetto@unipi.it

1. Introduction

Hepatocellular carcinoma (HCC) has a worldwide incidence ranging from 5 to 20 per 100,000 individuals and is the 5th most common cancer in men and the 9th in women [1–3]. The incidence rate > 1.5% per year in at-risk populations such as cirrhotic patients recommends performing surveillance and several evidences suggest that early diagnosis improves HCC management [4].

HCC surveillance is mainly based on ultrasound scan (US) whose effectiveness is highly operator-dependent [4–7]. Alpha-fetoprotein (AFP) and protein induced by vitamin-K absence/antagonist-II (PIVKA-II) are the best available circulating biomarkers for the diagnosis of HCC [8–11]. However, they have some limitations as diagnostic tools for HCC because the etiology and the activity of the underlying liver disease affect their diagnostic performance [12,13]. To date there is no agreement among international guidelines about the use of biomarkers in HCC surveillance; they are not recommended by the European Association for the Study of the Liver (EASL) [6], while AFP testing every six months can be performed together with periodic US according to the American Association for the Study of Liver Disease (AASLD) [4].

AFP serum levels are influenced by liver regeneration following necrosis and inflammation [14] and fluctuate differently in patients with active liver disease and in those responding to antiviral therapy. PIVKA-II is an immature form of prothrombin whose serum levels increase in the presence of HCC following a defect in a post-translational vitamin-K-dependent carboxylation of ten glutamic acid residues at the amino-terminal [15]. Although PIVKA-II shows a higher specificity to HCC (> 80%), the presence of factors affecting the cycle of vitamin-K, such as drugs or impaired absorption, can lead to non-specific elevations [16].

As a consequence, the fluctuations of these biomarkers in several pathophysiological non-malignant conditions can be relevant and the identification of specific univocal cut-offs to detect HCC might be suboptimal because of their biological variability. More recently, some studies have shown that the analysis of single-point continuous values of HCC biomarkers by means of statistical models could improve the diagnostic accuracy rather than the application of specific cut-offs [17,18]. However, the use of serial measures of biomarkers might improve their performance for HCC screening since multiple testing would allow to compute their kinetics and the magnitude and rate of their change over time. Both the kinetics and the rate of change of

the biomarkers' serum levels over time (velocity) might have advantages over a single measurement in differentiating patients with cirrhosis and benign regeneration nodules from patients with nodules progressing to HCC.

The aim of the present case-control study was to assess the time-related variations of serum AFP and PIVKA-II levels in cirrhotic patients who did or did not develop HCC during surveillance.

2. Patients and methods

2.1. Study design

We performed a retrospective repeated-measure case-control study on cirrhotic patients undergoing surveillance for HCC. Cases were patients with HCC development and controls were patients who had not developed HCC for at least 12 months from the last available serum sample. We enrolled 418 consecutive cirrhotic patients with chronic liver disease (CLD) of different etiology undergoing HCC surveillance in three Italian Hepatology centers [200 (47.8%) in Pisa, 162 (38.8%) in Naples, 56 (13.4%) in Padua] for whom at least two serum samples were available. In 124 patients with HCC development (HCC+) one serum specimen was obtained at the time of HCC diagnosis and one or two serum specimens were available before HCC diagnosis. Two or three serum specimens were available also from the remaining 294 patients who did not develop HCC for at least 12 months after the collection of the last serum (HCC-). Liver cirrhosis was diagnosed at histology or based on unequivocal ultrasound/transient elastography/endoscopic features (liver morphology suggestive of cirrhosis, esophageal varices and/or other signs of portal hypertension) and/or clinical history of liver decompensation (ascites and/or hepatic encephalopathy). HCC was diagnosed on the basis of a typical vascular pattern of focal liver lesions obtained at imaging [computed tomography (CT), magnetic resonance imaging (MRI), contrast-enhanced ultrasound imaging (CEUS)], according to the EASL current guidelines for HCC [6]. The study was approved by the local Ethical Committee and conforms with The Code of Ethics of the World Medical Association (Declaration of Helsinki). All patients gave their written informed consent.

2.2. Laboratory assessment

Sera were stored at -20°C until they were tested for

AFP and PIVKA-II by means of two quantitative fully automated chemiluminescent-enzyme-immunoassays (CLEIA) on Lumipulse G1200 (Fujirebio Inc., Tokyo, Japan). The analytical sensitivity of the method was 0.8 ng/mL for the AFP assay (dynamic range 0.8 to 22451 ng/mL and upper normal limit 7.4 ng/mL) and 1.37 mAU/mL for the PIVKA-II assay (dynamic range 1.37 to 75000 and upper normal limit 48 mAU/mL). The coefficient of variation (CV) is < 3.3% for AFP and < 4.0% for PIVKA-II measurement [19]. All tests were performed in a single run at the reference laboratory of the University Hospital of Padua. Samples with results exceeding the dynamic range values were retested following appropriate dilution.

2.3. Statistical analysis

Most continuous variables were not Gaussian-distributed and reported as median (25th; 75th percentile). Categorical variables are reported as numbers and proportions. Differences between HCC+ and HCC- were analyzed using median regression and Pearson's Chi-square test for continuous and categorical variables, respectively. The time-related changes of AFP and PIVKA-II in cases (HCC+) and controls (HCC-) were retrospectively estimated using a random-effect generalized least squares (RE-GLS) regression model [20]. The response variables of the RE-GLS model were log₁₀-transformed AFP or log₁₀-transformed PIVKA-II. The log₁₀-transformation was used to reduce the expected skewness of the response variable. The pre-specified predictors of the RE-GLS model were time (continuous, years), squared time (continuous), HCC (dichotomous, 0 = no; 1 = yes), an HCC*time (dichotomous*continuous) interaction, and an HCC*squared time (dichotomous*continuous) interaction. The RE-GLS model was pre-specified because this is the best strategy to test a study hypothesis via regression analysis [20]. In particular, we did not explore other transformations of time besides squared time because of the availability of just three time-points and of the varying distance between them. Coherently with the pre-specified nature of the model, predictors were kept into it independently of their statistical significance [20]. It should be noted that, in the presence of significant interactions, the main effects cannot be interpreted as such and estimates made by the regression model have to be used [20]. We plotted these estimates to aid the clinical interpretation of the findings. The random effect of the RE-GLS was assigned to the patient. Internal cross-validation was performed using

Table 1
Main characteristics of HCC+ cases

| | | <i>n</i> (%) or median (25 th ; 75 th percentile) |
|---------------------|--------------------|---|
| Sex | F | 21 (16.9) |
| | M | 103 (83.1) |
| Age at diagnosis | Years | 65.9 (59.5; 72.7) |
| | Center | |
| | Pisa | 93 (75.0) |
| | Naples | 23 (18.5) |
| | Padua | 8 (6.5) |
| Etiology | HBV | 37 (29.8) |
| | HCV | 75 (60.5) |
| | Non-viral | 12 (9.7) |
| Child-pugh score | | 5 (5; 5) |
| Child-pugh class | A | 115 (92.7) |
| | B | 9 (7.3) |
| Description HCC | Single nodule | 102 (82.3) |
| | 2-3 nodules | 17 (13.7) |
| | > 3 nodule/diffuse | 5 (4.0) |
| Max diameter lesion | mm | 21 (8; 120) |
| BCLC stage | 0 | 50 (40.3) |
| | A | 51 (41.1) |
| | B | 2 (1.6) |
| | C | 12 (9.7) |
| | D | 9 (7.3) |

Notes: BCLC: Barcelona Clinic Liver Cancer.

bootstrap on 1000 samples with replacement. This is expected to correct for over-optimism and make the model more generalizable [20]. We also run the RE-GLS model using the study center as cluster (0 = Pisa; 1 = Naples; 2 = Padua), i.e. by bootstrapping the patients with replacement within each center [20] but this did not change the findings and is not reported here. The RE-GLS is robust to missing data provided that they are missing at random, which is a reasonable assumption for the present study. The mean (range) number of effective time-points available for analysis was 2.8 (2.0 to 3.0) for both log₁₀AFP and log₁₀PIVKA-II. Bootstrapped 95% confidence intervals (95% CIs) are reported for the regression coefficients and the estimates obtained from the RE-GLS model [20]. Statistical analysis was performed using Stata 15.1 (Stata Corporation, College Station, TX, USA).

3. Results

3.1. Patients characteristics

Four hundred and eighteen patients were selected for the present study: 124 HCC+ cases and 294 HCC- controls. The main characteristics of HCC+ cases are reported in Table 1. The majority of HCC were diagnosed at a very early or early stage [BCLC 0 in

Table 2
Demographic and laboratory data

| | | HCC- (n = 294) | HCC+ (n = 124) | Overall (n = 418) | p values |
|------------------|---------------------|-------------------|-------------------|-------------------|----------|
| Sex | F | 77 (26.2) | 21 (16.9) | 98 (23.4) | 0.056 |
| | M | 217 (73.8) | 103 (83.1) | 320 (76.6) | |
| Etiology | HBV | 93 (31.6) | 37 (29.8) | 130 (31.1) | 0.880 |
| | HCV | 170 (57.8) | 75 (60.5) | 245 (58.6) | |
| | Non-viral | 31 (10.5) | 12 (9.7) | 43 (10.3) | |
| Center | Pisa | 107 (36.4) | 93 (75.0) | 200 (47.8) | < 0.001 |
| | Naples | 139 (47.3) | 23 (18.5) | 162 (38.8) | |
| | Padua | 48 (16.3) | 8 (6.5) | 56 (13.4) | |
| Age | (Years) | 63.5 (56.5; 69.7) | 65.9 (59.5; 72.7) | 64.2 (56.7; 70.8) | 0.019 |
| AFP | (ng/mL) | 4.2 (2.6; 8.6) | 8.4 (4.4; 32.1) | 5.0 (3.0; 10.2) | < 0.001 |
| PIVKA-II | (mAU/mL) | 32 (25; 42) | 66 (32; 192) | 35 (26; 61) | < 0.001 |
| AST | (U/L) | 26 (22; 36) | 43 (25; 78) | 29 (22; 46) | < 0.001 |
| ALT | (U/L) | 22 (17; 33) | 34 (22; 83) | 26 (18; 47.2) | < 0.001 |
| GGT | (U/L) | 31 (19; 57) | 60 (33; 105) | 38 (22; 74.7) | < 0.001 |
| ALP | (U/L) | 77 (62; 98) | 103 (82; 133) | 85 (65; 115.5) | < 0.001 |
| Albumin | (g/dL) | 4.3 (4.0; 4.5) | 4.1 (3.8; 4.4) | 4.2 (3.9; 4.5) | 0.038 |
| PT | (%) | 82 (60; 97) | 83 (73; 93) | 82 (68.2; 94) | 0.439 |
| INR | | 1.10 (1.02; 1.24) | 1.11 (1.06; 1.21) | 1.10 (1.03; 1.21) | 0.531 |
| Total bilirubin | (mg/dL) | 0.96 (0.60; 1.48) | 0.79 (0.59; 1.20) | 0.90 (0.69; 1.37) | 0.195 |
| PLTs | ($\times 10^9/L$) | 120 (89; 165) | 111 (77; 155) | 114 (82; 157) | 0.198 |
| Child-pugh score | | 5 (5; 5) | 5 (5; 5) | 5 (5; 5) | 0.674 |
| Child-pugh class | A | 272 (92.5) | 115 (92.7) | 387 (92.6) | 0.940 |
| | B | 22 (7.5) | 9 (7.3) | 31 (7.4) | |

Notes: AFP, alpha-fetoprotein; ALP, alkaline phosphatase; ALT, alanine aminotransferase; AST, aspartate aminotransferase; GGT, gamma-glutamyl transferase; INR, International normalized ratio; PIVKA-II, Protein induced by Vitamin K Absence/Antagonist-II; PT, Prothrombin time; PLTs, platelets. Laboratory data refer to the last serum specimen collected. Continuous variables are reported as median (25th; 75th percentile).

50 (40.3%), BCLC A in 51 (41.1%)]. Demographic and laboratory data are reported in Table 2 stratified by HCC status. Continuous variables are expressed as median (25th; 75th percentile) and refer to the last serum specimen collected, which is the nearest to the diagnosis in patients who developed HCC. HCC+ patients were 93/200 (46.5%) in Pisa, 23/162 (14.2%) in Naples and 8/56 (14.3%) in Padua. Men were more common than women both among HCC+ (103/124, 83.1%) and HCC- patients (217/294, 73.8%). The etiology of chronic liver disease was HBV in 37 (29.8%) of HCC+ and 93 (31.6%) of HCC- patients; HCV in 75 (60.5%) of HCC+ and 170 (57.8%) of HCC- patients; non-viral in 12 (9.7%) of HCC+ and 31 (10.5%) of HCC- patients.

AFP and PIVKA-II serum levels were higher in HCC+ than HCC- ($p < 0.001$). HCC+ patients showed higher levels of liver enzymes and albumin. Nevertheless, the majority of patients showed a preserved liver function (Child-Pugh A in 92.6%), without differences between groups (92.5% in HCC- and 92.7% in HCC+).

3.2. Modeling analysis

A total of 1163 serum samples were evaluated. Two serum samples were available for 91 patients (29 HCC+

and 62 HCC-) and three for 327 patients (95 HCC+ and 232 HCC-). The median (minimum; maximum) time elapsed between the first and the last serum collection was 13.1 (3.2; 96.0) in HCC+ and 22.8 (2.0; 74.5) months in HCC- patients.

The median (minimum; maximum) time at which the last serum specimen was collected in the 124 HCC+ patients was 0.1 (-3.6; 4.7) months within the diagnosis of HCC. The 297 HCC- patients remained free from HCC for a median (minimum; maximum) time of 14.2 (12.1; 71.7) months after the last serum specimen.

The distribution of the two biomarkers in HCC+ and HCC- is given in Fig. 1. Overall, median values (25th; 75th percentile) of AFP and PIVKA-II were 5.6 (3.1; 11.8) ng/mL and 34 (26; 51) mAU/mL, respectively.

The time-related changes of \log_{10} AFP and \log_{10} PIVKA-II as estimated by the RE-GLS model are plotted in Fig. 2. Both \log_{10} AFP and \log_{10} PIVKA-II differ in HCC+ vs. HCC- patients at all time-points except at 48 months where the precision of the model decreases due to a greater dispersion of data points. An identical pattern is obtained by modeling male and female data separately (not shown). The regression coefficients for the fixed part of the RE-GLS model used to investigate the changes of \log_{10} AFP and \log_{10} PIVKA-II in HCC+ vs. HCC- patients are reported in Table 3.

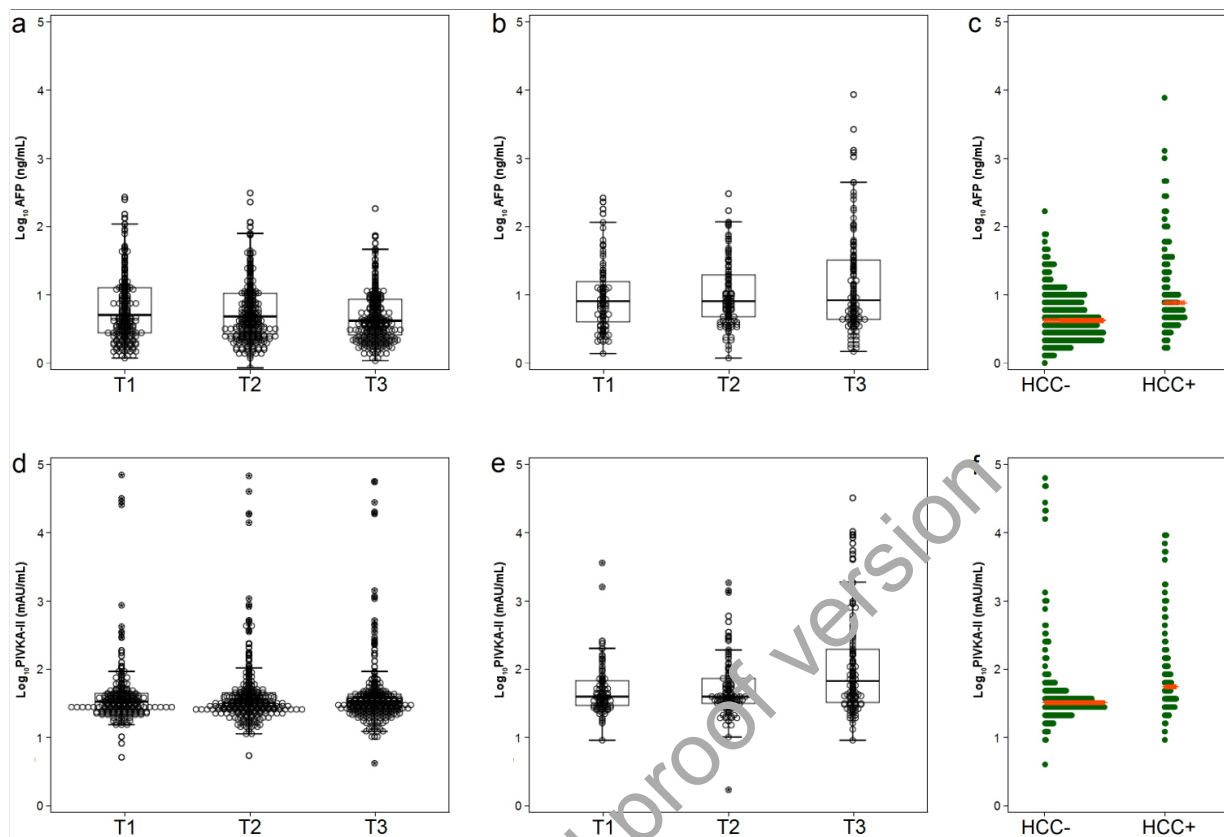


Fig. 1. Concentrations of biomarkers at different time-points in HCC- (panel a and d) and HCC+ (panel b and e). Dotplot distribution of AFP (panel c) and PIVKA-II (panel f) in HCC- and HCC+. The teal line is the median.

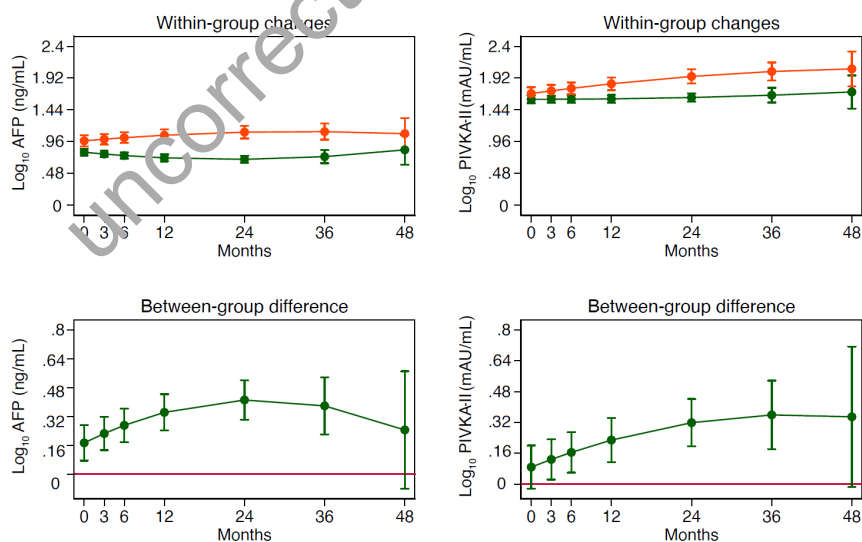


Fig. 2. Changes in \log_{10} AFP and \log_{10} PIVKA-II as estimated by the RE-GLS model in HCC+ (red line) and HCC- (green line). Values are means and 95% bootstrapped confidence intervals (see statistical analysis for details). Between-group differences are obtained by subtracting HCC+ minus HCC-.

Table 3
Regression coefficients for the fixed part of the RE-GLS model used to investigate the changes of AFP and PIVKA-II in HCC- and HCC+

| | Log ₁₀ AFP | Log ₁₀ PIVKA-II |
|-------------------|---------------------------|----------------------------|
| HCC+ | 0.173*** [0.074; 0.272] | 0.088 [-0.024; 0.200] |
| Month | -0.010** [-0.016; -0.004] | -0.000 [-0.007; 0.006] |
| HCC+ *Month | 0.17** [0.05; 0.30] | 0.18** [0.05; 0.31] |
| Month*Month | 0.018*** [0.008; 0.028] | 0.014* [0.002; 0.025] |
| HCC+ *Month*Month | 0.000* [0.000; 0.000] | 0.000 [-0.000; 0.000] |
| HCC+ *Month*Month | -0.000* [-0.001; -0.000] | -0.000 [-0.001; 0.000] |
| Intercept | 0.799*** [0.748; 0.850] | 1.599*** [1.542; 1.656] |

95% bootstrapped confidence intervals in brackets. * $p < 0.05$, ** $p < 0.01$, *** $p < 0.001$.

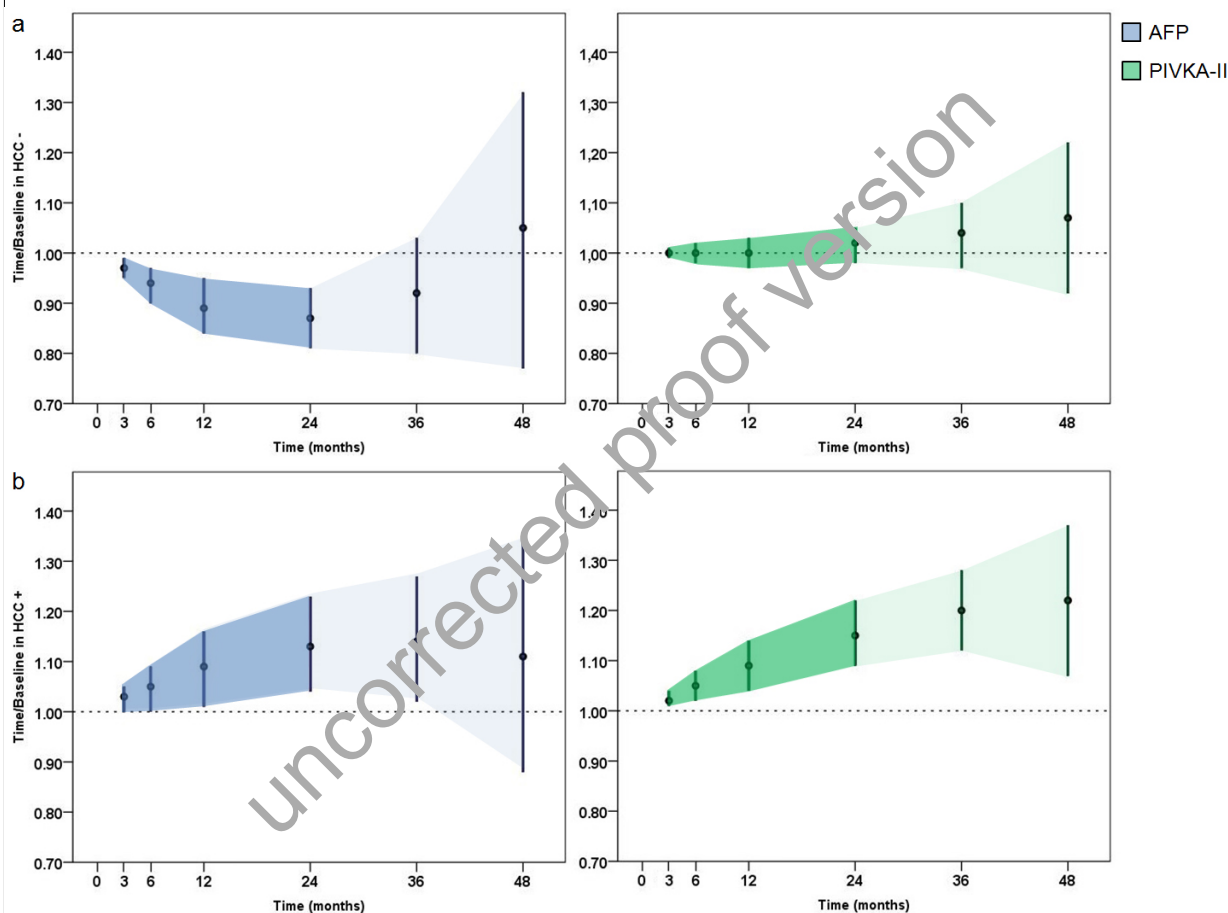


Fig. 3. Ratios between the value of \log_{10} AFP and \log_{10} PIVKA-II at selected time-points (3, 6, 12, 24, 36 and 48 months) vs. the baseline as estimated from the RE-GLS model by means of non-linear contrasts in HCC- (panel a) and HCC+ (panel b) patients (see statistical analysis for details). Values higher or lower than 1 indicate increasing or decreasing trends respectively. Shaded areas are 95% CI confidence intervals.

Figure 3 shows the ratios between a given time-point (3, 6, 12, 24, 36 and 48 months) and the baseline of \log_{10} AFP and \log_{10} PIVKA-II in HCC+ and HCC- patients as estimated from the RE-GLS model by means of non-linear contrasts. In HCC- patients, \log_{10} AFP and \log_{10} PIVKA-II show different time-courses, with the latter being highly stable over time and showing

lower 95% CIs compared to \log_{10} AFP (panel a). In HCC+ patients, the ratios become increasingly greater than 1 with time (panel b). The precision of the estimate as conveyed by 95% CI is higher for PIVKA-II and greatly decreases for both markers after 24 months because of the lower number of available time-points.

To further characterize the variability of AFP and

221
222
223
224
225
226
227

228
229
230
231
232
233
234

Table 4

Percent change vs. baseline at given time-points in HCC+ versus HCC- patients

| Time (months) | Log ₁₀ AFP (%) | Log ₁₀ PIVKA-II (%) |
|---------------|---------------------------|--------------------------------|
| 3 | 6 (3 to 9) $p < 0.001$ | 2 (0 to 4) $p = 0.017$ |
| 6 | 11 (5 to 17) $p < 0.001$ | 5 (1 to 8) $p = 0.012$ |
| 12 | 19 (10 to 29) $p < 0.001$ | 8 (3 to 14) $p = 0.005$ |
| 24 | 27 (15 to 38) $p < 0.001$ | 14 (6 to 21) $p < 0.001$ |
| 36 | 23 (6 to 39) $p = 0.009$ | 16 (5 to 26) $p = 0.003$ |
| 48 | 7 (-29 to 42) $p = 0.717$ | 15 (-6 to 36) $p = 0.163$ |

95% bootstrapped confidence intervals in brackets.

PIVKA-II, we computed the percent change estimated from the RE-GLS model using non-linear contrasts at a given time-point (3, 6, 12, 24, 36 and 48 months) versus the baseline value in HCC+ compared to HCC- patients (Table 4). The analysis shows that the percentage variability of log₁₀AFP is higher than the variability of log₁₀PIVKA-II. The width of 95% CIs indicates that the accuracy of the estimate is higher for log₁₀PIVKA-II than log₁₀AFP.

4. Discussion

The time-changes of any biomarker are the result of both the analytical and biological variability. When the analytical imprecision of the assay is sufficiently low, the biological variation retains a potential clinical value that needs to be addressed. In particular, when dealing with biomarkers for cancer surveillance, it would be crucial to discriminate the extent of variability that is the expression of non-malignant conditions from a variability that is likely to indicate an ongoing neoplastic process.

In the present case-control study, we aimed to estimate the time-changes of AFP and PIVKA-II in patients with and without HCC development. Interestingly, in HCC+ patients both AFP and PIVKA-II were estimated to increase over time, confirming their potential usefulness during periodic surveillance. On the other hand, among HCC- patients the time-related changes of PIVKA-II were more stable than those of AFP. The different trajectories of PIVKA-II in HCC+ and HCC- patients are likely to reflect the mechanism of PIVKA-II production, which, contrarily to AFP, is not affected by liver disease activity [21].

The design of the present retrospective study was not intended to quantify the extent of the clinically relevant variability for HCC diagnosis. We computed, however, the percent time-related changes of log₁₀AFP and log₁₀PIVKA-II in HCC+ vs. HCC- patients using

a RE-GLS regression model. At 6 months, i.e. the first reference time-point for US surveillance of patients at risk of HCC development, we found a 11% (95% CI 5 to 17%) increase of log₁₀AFP and a 5% (95% CI 1 to 8%) increase of log₁₀PIVKA-II compared to baseline in HCC+ vs. HCC- patients. The 95% CIs of log₁₀PIVKA-II were narrower than those of log₁₀AFP (not only at 6 months but at any time-point). According to these data, any increase of serum PIVKA-II levels above 2 standard deviations of the analytical variability of the assay is likely to be clinically relevant for the diagnosis of HCC while AFP changes are expected to be much more variable.

These findings are consistent with the notion that disease activity affects the diagnostic performance of AFP more than that of PIVKA-II [22]. Accordingly, disease activity was highly variable in our population; ninety percent of our patients with HBV-related CLD were in fact undergoing antiviral treatment with nucleos(t)ide analogues and had a suppressed viremia and normal liver enzymes. On the contrary, only 31% of our patients with HCV-related CLD were undergoing antiviral treatment and 43% of them had normal liver enzymes. Since a prolonged remission of disease limits the confounding effect of necro-inflammation on AFP serum levels, future analyses are needed to reconsider AFP diagnostic performance in patients with sustained virologic response.

The present study has several limitations. The major limitation is the fact that the time-points which were used to model the time-course of AFP and PIVKA-II were not equally spaced. To account for this fact, we used a RE-GLS with a pre-specified shape for time and the time*HCC interaction and a random effect at the patient-level (see statistical analysis for details). Although this is acceptable on theoretical grounds, it would be much better to analyze equally spaced time-points (e.g. 6, 12 and 24 months) because a program of HCC surveillance is usually based on such fixed time frame. Another limitation is the aforementioned heterogeneity of the study patients, who had liver cirrhosis of different etiology and different disease activity. On the other hand, such population is ideal for performing a general proof-of-concept study of the variability of HCC markers, as we did here, because it offers a different case-mix of patients. Another limitation is that HCC frequency differed substantially among the three study centers, being 46.5% in Pisa, 14.2% in Naples and 14.3% in Padua. There was certainly a selection bias due to the inclusion criterion specifying that at least two repeated sera per patient were needed for inclusion

into the present analysis. However, bootstrapping the RE-GLS model with replacement within each center did not change our findings (data not shown).

In conclusion, we found that time-changes of PIVKA-II and AFP have the potential for being employed as early markers of HCC. The evidence provided by this proof-of-concept study suggests performing prospective studies of the time-course of AFP and PIVKA-II to identify their specific time-related variations to be used as early marker of HCC.

References

- [1] F.X. Bosch et al., Primary liver cancer worldwide incidence and trends, *Gastroenterology* **127**(5 Suppl 1) (2004), S5–S16.
- [2] H.B. El-Serag, Epidemiology of viral hepatitis and hepatocellular carcinoma, *Gastroenterology* **142**(6) (2012), 1264–1273.
- [3] H.B. El-Serag, Surveillance for hepatocellular carcinoma: in whom and how? *Therap Adv Gastroenterol* **4**(1) (2011), 5–10.
- [4] J.K. Heimbach et al., AASLD guidelines for the treatment of hepatocellular carcinoma, *Hepatology* **67**(1) (2018), 358–380.
- [5] A. Singal et al., Meta-analysis: surveillance with ultrasound for early-stage hepatocellular carcinoma in patients with cirrhosis, *Aliment Pharmacol Ther* **30** (2009), 30–47.
- [6] European Association for the Study of Liver, EASL clinical practice guidelines: management of hepatocellular carcinoma, *J Hepatol* **69**(1) (2018), 182–236.
- [7] M. Kudo et al., JSH consensus-based clinical practice guidelines for the management of hepatocellular carcinoma: 2014 update by the liver cancer study group of japan, *Liver Cancer* **3**(3–4) (2014), 458–468.
- [8] A.S. Lok et al., Des-gamma-carboxy prothrombin and alpha-fetoprotein as biomarkers for the early detection of hepatocellular carcinoma, *Gastroenterology* **138** (2010), 295–302.
- [9] C. Li et al., Diagnostic accuracy of des-gamma-carboxy prothrombin versus alpha-fetoprotein for hepatocellular carcinoma: a systematic review, *Hepatol Res* **44**(10) (2014), 11–25.
- [10] E.S. Jang et al., Diagnostic performance of alpha-fetoprotein, protein induced by vitamin K absence, osteopontin, dickkopf-1 and its combinations for hepatocellular carcinoma, *PLoS One* **11**(3) (2016), e0151069.
- [11] T.S. Lim et al., Combined use of AFP, PIVKA-II, and AFP-L3 as tumor markers enhances diagnostic accuracy for hepatocellular carcinoma in cirrhotic patients, *Scand J Gastroenterol* **51**(3) (2016), 344–353.
- [12] T.I. Huo et al., The predictive ability of serum alpha-fetoprotein for hepatocellular carcinoma is linked with the characteristics of the target population at surveillance, *Journal of Surgical Oncology* **95** (2007), 645–651.
- [13] G. Ricco et al., Impact of etiology of chronic liver disease on hepatocellular carcinoma biomarkers, *Cancer Biomark* **21**(3) (2018), 603–612.
- [14] P. Gopal et al., Factors that affect accuracy of a-fetoprotein test in detection of hepatocellular carcinoma in patients with cirrhosis, *Clin Gastroenterol Hepatol* **12**(5) (2014), 870–877.
- [15] H.A. Liebman et al., Des-gamma-carboxy (abnormal) prothrombin as a serum marker of primary hepatocellular carcinoma, *N Engl J Med* **310** (1984), 1427–1431.
- [16] H. Xing et al., Clinical application of protein induced by vitamin K antagonist-II as a biomarker in hepatocellular carcinoma, *Tumour Biol* **37** (2015), 15447–15456.
- [17] P.J. Johnson et al., The detection of hepatocellular carcinoma using a prospectively developed and validated model based on serological biomarkers, *Cancer Epidemiol Biomarkers Prev* **23**(1) (2014), 144–153.
- [18] P.M. Henkel et al., Validation of a novel model for the early detection of hepatocellular carcinoma, *Clin Proteomics* **16**(2) (2019), 1–9.
- [19] J. Choi et al., Evaluation of automated serum des-gamma-carboxyprothrombin (DCP) assays for detecting hepatocellular carcinoma, *Clin Biochem* **44**(17–18) (2011), 1464–1468.
- [20] F.E. Harrell, Regression modeling strategies: with applications to linear models, logistic and ordinal regression, and survival analysis. Springer, Switzerland, 2015.
- [21] K. Murata et al., Cytoskeletal changes during epithelial-to-fibroblastoid conversion as a crucial mechanism of des-gamma-carboxy prothrombin production in hepatocellular carcinoma, *Int J Oncol* **35**(5) (2009), 1005–1014.
- [22] G.A. Kim et al., Reappraisal of serum alpha-fetoprotein as a surveillance test for hepatocellular carcinoma during entecavir treatment, *Liver Int* **35**(1) (2015), 232–239.