



ALMA MATER STUDIORUM
UNIVERSITÀ DI BOLOGNA

ARCHIVIO ISTITUZIONALE DELLA RICERCA

Alma Mater Studiorum Università di Bologna Archivio istituzionale della ricerca

Time-Sensitive Aspects of Mars Sample Return (MSR) Science

This is the final peer-reviewed author's accepted manuscript (postprint) of the following publication:

Published Version:

Tosca N. J., Beaty D. W., Carrier B. L., Agee C. B., Cockell C. S., Glavin D. P., et al. (2022). Time-Sensitive Aspects of Mars Sample Return (MSR) Science. *ASTROBIOLOGY*, 22(Supplement 1), S-81-S-111 [10.1089/AST.2021.0115].

Availability:

This version is available at: <https://hdl.handle.net/11585/842596> since: 2022-05-25

Published:

DOI: <http://doi.org/10.1089/AST.2021.0115>

Terms of use:

Some rights reserved. The terms and conditions for the reuse of this version of the manuscript are specified in the publishing policy. For all terms of use and more information see the publisher's website.

This item was downloaded from IRIS Università di Bologna (<https://cris.unibo.it/>).
When citing, please refer to the published version.

(Article begins on next page)

This is the final peer-reviewed accepted manuscript of:

Tosca N. J.; Beaty D. W.; Carrier B. L.; Agee C. B.; Cockell C. S.; Glavin D. P.; Hutzler A.; Marty B.; McCubbin F. M.; Regberg A. B.; Velbel M. A.; Kminek G.; Meyer M. A.; Haltigin T.; Busemann H.; Cavalazzi B.; Debaille V.; Grady M. M.; Hauber E.; Hays L. E.; Pratt L. M.; Smith A. L.; Smith C. L.; Summons R. E.; Swindle T. D.; Tait K. T.; Udry A.; Usui T.; Wadhwa M.; Westall F.; Zorzano M. -P.: Time-Sensitive Aspects of Mars Sample Return (MSR) Science. ASTROBIOLOGY Vol. 22, Suppl. 1. ISSN: 1531-1074.

DOI: 10.1089/AST.2021.0115

The final published version is available online at: <http://dx.doi.org/10.1089/AST.2021.0115>

Rights / License:

The terms and conditions for the reuse of this version of the manuscript are specified in the publishing policy. For all terms of use and more information see the publisher's website.

This item was downloaded from IRIS Università di Bologna (<https://cris.unibo.it/>)

When citing, please refer to the published version.

Time-Sensitive Aspects of Mars Sample Return (MSR) Science

Prof. Nicholas J. Tosca,¹ Dr. Carl B. Agee,² Prof. Charles S. Cockell,³
Dr. Daniel P. Glavin,⁴ Dr. Aurore Hutzler,⁵ Dr. Bernard Marty,⁶ Dr. Francis M. McCubbin,⁷
Dr. Aaron B. Regberg,⁷ Prof. Michael A. Velbel,^{8,9} Dr. Gerhard Kminek,⁵ Dr. Michael A. Meyer,¹⁰
Dr. David W. Beaty,¹¹ Dr. Brandi L. Carrier,¹¹ Dr. Timothy Haltigin,¹² Dr. Lindsay E. Hays,¹⁰
Dr. Henner Busemann,¹³ Dr. Barbara Cavalazzi,¹⁴ Dr. Vinciane Debaille,¹⁵ Dr. Monica M. Grady,¹⁶
Dr. Ernst Hauber,¹⁷ Dr. Lisa M. Pratt,¹⁸ Dr. Alvin L. Smith,¹¹ Dr. Caroline L. Smith,^{19,20}
Prof. Roger E. Summons,²¹ Dr. Timothy D. Swindle,²² Dr. Kimberly T. Tait,²³
Prof. Arya Udry,²⁴ Prof. Tomohiro Usui,²⁵ Prof. Meenakshi Wadhwa,^{11,26}
Dr. Frances Westall,²⁷ and Dr. Maria-Paz Zorzano^{28,29}

¹University of Cambridge, Department of Earth Sciences, Cambridge, UK.

²University of New Mexico, Institute of Meteoritics, Albuquerque, New Mexico, USA.

³University of Edinburgh, Centre for Astrobiology, School of Physics and Astronomy, Edinburgh, UK.

⁴NASA Goddard Space Flight Center, Solar System Exploration Division, Greenbelt, Maryland, USA.

⁵European Space Agency, Noordwijk, The Netherlands.

⁶Université de Lorraine, CNRS, CRPG, Nancy, France.

⁷NASA Johnson Space Center, Astromaterials Research and Exploration Science Division, Houston, Texas, USA.

⁸Michigan State University, Earth and Environmental Sciences, East Lansing, Michigan, USA.

⁹Smithsonian Institution, Department of Mineral Sciences, National Museum of Natural History, Washington, DC, USA.

¹⁰NASA Headquarters, Mars Sample Return Program, Washington, DC, USA.

¹¹Jet Propulsion Laboratory, California Institute of Technology, Pasadena, California, USA.

¹²Canadian Space Agency, Saint Hubert, Quebec, Canada.

¹³ETH Zurich, Institute of Geochemistry and Petrology, Zurich, Switzerland.

¹⁴Università di Bologna, Dipartimento di Scienze Biologiche, Geologiche e Ambientali, Bologna, Italy.

¹⁵Université Libre de Bruxelles, Bruxelles, Belgium.

¹⁶The Open University, Milton Keynes, UK.

¹⁷German Aerospace Center (DLR), Institute of Planetary Research, Berlin, Germany.

¹⁸Indiana University Bloomington, Earth and Atmospheric Sciences, Bloomington, Indiana, USA.

¹⁹Natural History Museum, Department of Earth Sciences, London, UK.

²⁰University of Glasgow, School of Geographical and Earth Sciences, Glasgow, UK.

²¹Massachusetts Institute of Technology, Earth, Atmospheric and Planetary Sciences, Cambridge, Massachusetts, USA.

²²University of Arizona, Lunar and Planetary Laboratory, Tucson, Arizona, USA.

²³Royal Ontario Museum, Department of Natural History, Toronto, Ontario, Canada.

²⁴University of Nevada Las Vegas, Las Vegas, Nevada, USA.

²⁵Japan Aerospace Exploration Agency (JAXA), Institute of Space and Astronautical Science (ISAS), Chofu, Tokyo, Japan.

²⁶Arizona State University, Tempe, Arizona, USA.

²⁷Centre National de la Recherche Scientifique (CNRS), Centre de Biophysique Moléculaire, Orléans, France.

²⁸Centro de Astrobiología (CSIC INTA), Torrejón de Ardoz, Spain.

²⁹University of Aberdeen, Department of Planetary Sciences, School of Geosciences, King's College, Aberdeen, UK.

This paper was written by the MSR Science Planning Group 2 (MSPG2) working under a Terms of Reference from NASA and ESA.

Table of Contents

Abstract

Executive Summary

List of Findings

1. Introduction

1.1 Scope of the report

2. Time-Sensitivity of MSR Investigations: Background

3. Time-Sensitivity of MSR Investigations: Rationale

4. Time-Sensitive Processes and Their Characteristic Timescales

4.1 Degradation of organic material (including volatile compounds)

4.2 Modification of sample headspace gas composition

4.3 Mineral-volatile exchange

4.3.1 Hydrous sulfate minerals

4.3.2 Poorly crystalline and X-ray amorphous materials

4.3.3 Phyllosilicate minerals

4.3.4 Hydrous carbonate minerals

4.4 Oxidation/reduction of redox-sensitive minerals

5. Estimating the Loss of Scientific Information as a Function of Time: Implications for Sample Handling and Curation Workflow within an SRF

6. Recommendations for SRF Sample Processing and Analytical Capabilities

6.1 Goal 1: Characterize sample tube headspace gas composition

6.2 Goal 2: Characterize organic material of potential biological origin (including volatile hydrocarbons)

6.3 Goal 3: Characterize mineral-bound volatiles

6.4 Goal 4: Characterize solid-phase volatile hosts

7. Recommendations for Future Work

Acknowledgments

Disclosure Statement

Funding Information

References

Acronyms Used

Abstract

Samples returned from Mars would be placed under quarantine at a Sample Receiving Facility (SRF) until they are considered safe to release to other laboratories for further study. The process of determining whether samples are safe for release, which may involve detailed analysis and/or sterilization, is expected to take several months. However, the process of breaking the sample tube seal and extracting the headspace gas will perturb local equilibrium conditions between gas and rock and set in motion irreversible processes that proceed as a function of time. Unless these time-sensitive processes are understood, planned for, and/or monitored during the quarantine period, scientific information expected from further analysis may be lost forever.

At least four processes underpin the time-sensitivity of Mars returned sample science: (1) degradation of organic material of potential biological origin, (2) modification of sample headspace gas composition, (3) mineral-volatile exchange, and (4) oxidation/reduction of redox-sensitive materials. Available constraints on the timescales associated with these processes supports the conclusion that an SRF must have the capability to characterize attributes such as sample tube headspace gas composition, organic material of potential biological origin, as well as volatiles and their solid-phase hosts.

Because most time-sensitive investigations are also sensitive to sterilization, these must be completed inside the SRF and on timescales of several months or less. To that end, we detail recommendations for how sample preparation and analysis could complete these investigations as efficiently as possible within an SRF. Finally, because constraints on characteristic timescales that define time-sensitivity for some processes are uncertain, future work should focus on: (1) quantifying the timescales of volatile exchange for core material physically and mineralogically similar to samples expected to be returned from Mars, and (2) identifying and developing stabilization or temporary storage strategies that mitigate volatile exchange until analysis can be completed.

Executive Summary

Any samples returned from Mars would be placed under quarantine at a Sample Receiving Facility (SRF) until it can

be determined that they are safe to release to other laboratories for further study. The process of determining whether samples are safe for release, which may involve detailed analysis and/or sterilization, is expected to take several

months. However, the process of breaking the sample tube seal and extracting the headspace gas would perturb local equilibrium conditions between gas and rock and set in motion irreversible processes that proceed as a function of time. Unless these processes are understood, planned for, and/or monitored during the quarantine period, scientific information expected from further analysis may be lost forever.

Specialist members of the Mars Sample Return Planning Group Phase 2 (MSPG-2), referred to here as the Time-Sensitive Focus Group, have identified four processes that underpin the time-sensitivity of Mars returned sample science: (1) degradation of organic material of potential biological origin, (2) modification of sample headspace gas composition, (3) mineral-volatile exchange, and (4) oxidation/reduction of redox-sensitive materials (Figure 2). Consideration of the timescales and the degree to which these processes jeopardize scientific investigations of returned samples supports the conclusion that an SRF must have the capability to characterize: (1) sample tube headspace gas composition, (2) organic material of potential biological origin, (3) volatiles bound to or within minerals, and (4) minerals or other solids that host volatiles (Table 4).

Most of the investigations classified as time-sensitive in this report are also sensitive to sterilization by either heat treatment and/or gamma irradiation (Velbel et al., 2022). Therefore, these investigations must be completed inside biocontainment and on timescales that minimize the irrecoverable loss of scientific information (i.e., several months or less; Section 5). To that end, the Time-Sensitive Focus Group has outlined a number of specific recommendations for sample preparation and instrumentation in order to complete these investigations as efficiently as possible within an SRF (Table 5). Constraints on the characteristic timescales that define time-sensitivity for different processes can range from relatively coarse to uncertain (Section 4). Thus, future work should focus on: (1) quantifying the timescales of volatile exchange for variably lithified core material physically and mineralogically similar to samples expected to be returned from Mars, and (2) identifying and developing stabilization strategies or temporary storage strategies that mitigate volatile exchange until analysis can be completed.

List of Findings

FINDING T-1: Aqueous phases, and oxidants liberated by exposure of the sample to aqueous phases, mediate and accelerate the degradation of critically important but sensitive organic compounds such as DNA.

FINDING T-2: Warming samples increases reaction rates and destroys compounds making biological studies much more time-sensitive.

MAJOR FINDING T-3: **Given the potential for rapid degradation of biomolecules, (especially in the presence of aqueous phases and/or reactive O-containing compounds) Sample Safety Assessment Protocol (SSAP) and parallel biological analysis are time sensitive and must be carried out as soon as possible.**

FINDING T-4: If molecules or whole cells from either extant or extinct organisms have persisted under present-day martian conditions in the samples, then it follows that preserving sample aliquots under those same conditions (i.e., 6 mbar total pressure in a dominantly CO₂ atmosphere

and at an average temperature of -80°C) in a small isolation chamber is likely to allow for their continued persistence.

FINDING T-5: Volatile compounds (e.g., HCN and formaldehyde) have been lost from Solar System materials stored under standard curation conditions.

FINDING T-6: Reactive O-containing species have been identified *in situ* at the martian surface and so may be present in rock or regolith samples returned from Mars. These species rapidly degrade organic molecules and react more rapidly as temperature and humidity increase.

FINDING T-7: Because the sample tubes would not be closed with perfect seals and because, after arrival on Earth, there will be a large pressure gradient across that seal such that the probability of contamination of the tube interiors by terrestrial gases increases with time, the as-received sample tubes are considered a poor choice for long-term gas sample storage. This is an important element of time sensitivity.

MAJOR FINDING T-8: **To determine how volatiles may have been exchanged with headspace gas during transit to Earth, the composition of martian atmosphere (in a separately sealed reservoir and/or extracted from the witness tubes), sample headspace gas composition, temperature/time history of the samples, and mineral composition (including mineral-bound volatiles) must all be quantified. When the sample tube seal is breached, mineral-bound volatile loss to the curation atmosphere jeopardizes robust determination of volatile exchange history between mineral and headspace.**

FINDING T-9: Previous experiments with mineral powders show that sulfate minerals are susceptible to H₂O loss over timescales of hours to days. In addition to volatile loss, these processes are accompanied by mineralogical transformation. Thus, investigations targeting these minerals should be considered time-sensitive.

FINDING T-10: Sulfate minerals may be stabilized by storage under fixed relative-humidity conditions, but only if the identity of the sulfate phase(s) is known *a priori*. In addition, other methods such as freezing may also stabilize these minerals against volatile loss.

FINDING T-11: Hydrous perchlorate salts are likely to undergo phase transitions and volatile exchange with ambient surroundings in hours to days under temperature and relative humidity ranges typical of laboratory environments. However, the exact timescale over which these processes occur is likely a function of grain size, lithification, and/or cementation.

FINDING T-12: Nanocrystalline or X-ray amorphous materials are typically stabilized by high proportions of surface adsorbed H₂O. Because this surface adsorbed H₂O is weakly bound compared to bulk materials, nanocrystalline materials are likely to undergo irreversible ripening reactions in response to volatile loss, which in turn results in decreases in specific surface area and increases in crystallinity. These reactions are expected to occur over the timescale of weeks to months under curation conditions. Therefore, the crystallinity and specific surface area of nanocrystalline materials should be characterized and monitored within a few months of opening the sample tubes. These are considered time-sensitive measurements that must be made as soon as possible.

FINDING T-13: Volcanic and impact glasses, as well as opal-CT, are metastable in air and susceptible to alteration and volatile exchange with other solid phases and ambient

headspace. However, available constraints indicate that these reactions are expected to proceed slowly under typical laboratory conditions (*i.e.*, several years) and so analyses targeting these materials are not considered time sensitive.

FINDING T-14: Surface adsorbed and interlayer-bound H₂O in clay minerals is susceptible to exchange with ambient surroundings at timescales of hours to days, although the timescale may be modified depending on the degree of lithification or cementation. Even though structural properties of clay minerals remain unaffected during this process (with the exception of the interlayer spacing), investigations targeting H₂O or other volatiles bound on or within clay minerals should be considered time sensitive upon opening the sample tube.

FINDING T-15: Hydrated Mg-carbonates are susceptible to volatile loss and recrystallization and transformation over timespans of months or longer, though this timescale may be modified by the degree of lithification and cementation. Investigations targeting hydrated carbonate minerals (either the volatiles they host or their bulk mineralogical properties) should be considered time sensitive upon opening the sample tube.

MAJOR FINDING T-16: Current understanding of mineral-volatile exchange rates and processes is largely derived from monomineralic experiments and systems with high surface area; lithified sedimentary rocks (accounting for some, but not all, of the samples in the cache) will behave differently in this regard and are likely to be associated with longer time constants controlled in part by grain boundary diffusion. Although insufficient information is available to quantify this at the present time, the timescale of mineral-volatile exchange in lithified samples is likely to overlap with the sample processing and curation workflow (*i.e.*, 1-10 months; Table 4). This underscores the need to prioritize measurements targeting mineral-hosted volatiles within biocontainment.

FINDING T-17: The liberation of reactive O-species through sample treatment or processing involving H₂O (*e.g.*, rinsing, solvent extraction, particle size separation in aqueous solution, or other chemical extraction or preparation protocols) is likely to result in oxidation of some component of redox-sensitive materials in a matter of hours. The presence of reactive O-species should be examined before sample processing steps that seek to preserve or target redox-sensitive minerals. Electron paramagnetic resonance spectroscopy (EPR) is one example of an effective analytical method capable of detecting and characterizing the presence of reactive O-species.

FINDING T-18: Environments that maintain anoxia under inert gas containing <<1 ppm O₂ are likely to stabilize redox-sensitive minerals over timescales of several years.

MAJOR FINDING T-19: MSR investigations targeting organic macromolecular or cellular material, mineral-bound volatile compounds, redox sensitive minerals, and/or hydrous carbonate minerals can become compromised at the timescale of weeks (after opening the sample tube), and scientific information may be completely lost within a time timescale of a few months. Because current considerations indicate that completion of SSAP, sample sterilization, and distribution to investigator laboratories cannot be completed in this time, these investigations must be completed within the Sample Receiving Facility as soon as possible.

1. Introduction

THE SUCCESSFUL LANDING of NASA's Mars 2020 Perseverance Rover on 18 February 2021 at Jezero Crater comes at a critical juncture in Solar System exploration. Since the first discovery and *in situ* analyses 17 years ago of ancient sedimentary rocks on Mars (Squyres *et al.*, 2004), a wealth of data has been returned from orbital and landed missions that support increasingly detailed comparisons between terrestrial and martian sedimentary records of planetary habitability and biosignature preservation potential (Grotzinger *et al.*, 2014, Hurowitz *et al.*, 2017, McLennan *et al.*, 2019). At the same time, current understanding of the diversity and dynamics of igneous and hydrothermal environments has deepened over the last several years (*e.g.*, Udry *et al.*, 2020; Ojha *et al.*, 2021), along with new constraints on planetary-scale structure and dynamics (*e.g.*, Costa *et al.*, 2020), and on volatile budgets and their exchange between the martian interior and atmosphere (*e.g.*, Wade *et al.*, 2017; Scheller *et al.*, 2021; Wordsworth *et al.*, 2021). The Perseverance Rover will leverage this understanding to collect and cache samples from one of the most geologically diverse settings on the martian surface in a critical next step in the planned Mars Sample Return (MSR) campaign (Beatty *et al.*, 2019; Farley *et al.*, 2020).

Once a set of return-worthy samples is collected and cached in the vicinity of Jezero Crater by the Perseverance Rover, MSR is currently planned to continue with two subsequent missions currently scheduled to launch as early as 2026. These missions would collect the cached samples and store them in a capsule on what is referred to as the Mars Ascent Vehicle (MAV). This vehicle would then launch from the martian surface and release a capsule referred to as the Orbiting Sample container (OS) for subsequent capture by a spacecraft that would return the samples to Earth. As early as 2031, that spacecraft could then release the OS (bound within the Earth Entry System (EES)) into Earth's atmosphere. After landing, the Earth Entry System would be collected and transported to a biocontained Sample Receiving Facility (SRF). Once contained within an SRF, the EES and OS would be opened, and the samples would eventually be extracted from their tubes and characterized. Once initial sample characterization and the sample safety assessment protocol are complete, the samples could be distributed to the international scientific community for objective-driven investigation.

The OS container should prevent its contents from exceeding 30°C. Nevertheless, from the moment that samples are collected and sealed within the Perseverance rover to the time that they are opened on Earth, the samples would have experienced a complex temperature history spanning several years. Although this temperature history would be monitored by a variety of on-board and remotely acquired temperature measurements, it is likely to involve transfer of volatile compounds to and from minerals contained within the geological samples anticipated at Jezero Crater and the sample headspace gas. This, in turn, may induce irreversible changes to sample mineralogy and chemical and isotopic composition, as well as changes to the headspace gas. However, if local conditions are known at the time of sampling, along with the temperature history of the tubes, mineralogy of the samples, and gas composition of the

headspace soon after they are opened, the complex processes of volatile transfer between rock and gas can be unraveled with thermodynamic and kinetic constraints to determine the state of the samples at the time they were collected at the martian surface.

Equally important, however, is the expectation that, assuming the sample tube seals are still intact, breaking that seal and extracting the headspace gas will perturb local equilibrium conditions between gas and rock and set in motion volatile exchange processes that proceed as a function of time. Therefore, unless these processes are understood and/or accounted for or monitored once the sample tubes are opened, irreversible changes may occur to both geological samples and headspace gas that could jeopardize scientific information gained from further analysis. For this reason, an MSR SRF should have the capabilities to measure these properties inside biocontainment. Understanding these “time-sensitive” processes and their capacity to jeopardize Mars returned sample science and identifying strategies to maximize the retrieval of scientific information within biocontainment are the focus of this report.

1.1. Scope of the report

This report is the outcome of a series of meetings held between specialist members of the second MSR Planning Group (MSPG-2). The group (the Time-Sensitive Focus Group; TS-FG) was charged with (1) identifying which MSR science measurements should be considered time-sensitive, (2) determining the timescales over which time-sensitive measurements need to be conducted, (3) determining the degree to

which time-sensitive measurements will be compromised as a function of time, (4) determining the relative priority of time-sensitive measurements and (5) considering options for how time-sensitive measurements may be integrated within the sample handling and curation workflow and successfully conducted within an SRF. The time-sensitive focus group held bi-weekly and *ad hoc* virtual team meetings between November 2020 and March 2021. This report should feed into the decision-making strategy that would inform which analyses are undertaken in biocontainment and, hence, which functionalities should be designed into a SRF for MSR samples.

2. Time-Sensitivity of MSR Investigations: Background

The scientific objectives of MSR have been re-evaluated in many iterations over the last few decades by the National Research Council (*e.g.*, National Research Council, 2011) and the Mars Exploration Program Analysis Group (*e.g.*, MEPAG 2015). Most recently, in 2017, the International Mars Exploration Working Group chartered an international group of scientists to re-evaluate and define the scientific and engineering objectives of MSR. That group (the International MSR Objectives and Samples Team; iMOST), along with defining the scientific objectives of MSR, identified the types of samples and the specific measurements required to best address each objective in a report released in 2018 (Beaty *et al.*, 2019). Those objectives are listed in Table 1. Importantly, iMOST concluded at the time that the final four Mars 2020 landing sites all have the potential to address all objectives outlined in their report, including Jezero Crater, the final landing site of the Mars 2020 Perseverance Rover.

TABLE 1. SCIENTIFIC OBJECTIVES OF MARS SAMPLE RETURN (BEATY *ET AL.*, 2019)

iMOST Proposed Objectives		
	Shorthand	Full Statement of Objective
Objective 1	Geological environment(s)	Interpret the primary geologic processes and history that formed the martian geologic record, with an emphasis on the role of water.
Sub Obj. 1.1	Sedimentary System	Characterize the essential stratigraphic, sedimentologic, and facies variation of a sequence of martian sedimentary rocks.
Sub Obj. 1.2	Hydrothermal	Understand an ancient martian hydrothermal system through study of its mineralization products and morphological expression.
Sub Obj. 1.3	Deep subsurface groundwater	Understand the rocks and minerals representative of a deep subsurface groundwater environment.
Sub Obj. 1.4	Subaerial	Understand water/rock/atmosphere interactions at the martian surface and how they have changed with time.
Sub Obj. 1.5	Igneous terrane	Determine the petrogenesis of martian igneous rocks in time and space.
Objective 2	Life	Assess and interpret the potential biological history of Mars, including assaying returned samples for the evidence of life.
Sub Obj. 2.1	Carbon chemistry	Assess and characterize carbon, including possible organic and pre biotic chemistry.
Sub Obj. 2.2	Biosignatures ancient	Assay for the presence of biosignatures of past life at sites that hosted habitable environments and could have preserved any biosignatures.
Sub Obj. 2.3	Biosignatures modern	Assess the possibility that any life forms detected are still alive, or were recently alive.
Objective 3	Geochronology	Determine the evolutionary timeline of Mars.
Objective 4	Volatiles	Constrain the inventory of martian volatiles as a function of geologic time and determine the ways in which these volatiles have interacted with Mars as a geologic system.
Objective 5	Planetary scale geology	Reconstruct the history of Mars as a planet, elucidating those processes that have affected the origin and modification of the crust, mantle and core.
Objective 6	Environmental hazards	Understand and quantify the potential martian environmental hazards to future human exploration and the terrestrial biosphere.
Objective 7	ISRU	Evaluate the type and distribution of <i>in situ</i> resources to support potential future Mars Exploration.

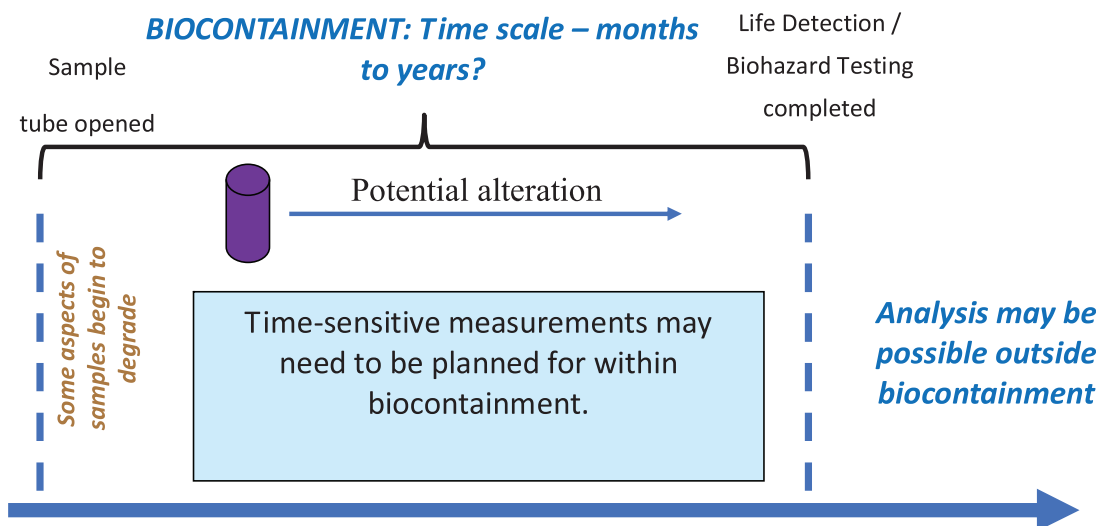


FIG. 1. Illustration of relationship of time-sensitive measurements to biohazard testing and biocontainment.

In 2019, the Mars Sample Return Planning Group (MSPG, 2019) established planning assumptions and potential requirements of MSR science performed in the sample receiving facility (SRF) under biological quarantine (accepting iMOST scientific objectives as their terms of reference). One important aspect of the MSPGs work on science in containment was to identify time-sensitive measurements, or those that are sensitive to physical and chemical changes that occur upon opening the sample tubes as samples eventually re-equilibrate with new conditions. The identification of a time-sensitive aspect to measurements in support of MSR implies that some measurements must be made on samples as quickly as possible or, in other words, before the Sample Safety Assessment Protocol (SSAP) could be completed (therefore executing them in biocontainment would be necessary; Figure 1).

Of the measurements identified by iMOST in 2018 that support the principal science objectives of Mars Sample Return, the MSPG identified 26 as having some degree of time-sensitivity (Supplement-Table 1). However, when those measurements should be made, in what order, and the degree to which scientific information may be lost as a function of time elapsed, was not considered in the report, though it was highlighted as a critical next step in MSR planning.

The MSPG further subdivided the 26 time-sensitive measurements into five categories (MSPG, 2019) as follows: (1) *Headspace gas measurements* include chemical and isotopic measurements made on headspace gas extracted from sample tubes. The time-sensitivity of these analyses arises because, due to the small molar quantities anticipated, they are deemed especially vulnerable to leakage and contamination during quantitative gas collection, sample transfers, contamination, etc. (2) *Hydrated minerals that reflect chemical and isotopic equilibria from Mars* include mineralogical, chemical, and isotopic measurements of minerals that incorporate a volatile component derived from, for example, the martian atmosphere or hydrosphere. This includes minerals such as phyllosilicates and hydrated sulfates that are known to exchange volatiles with their

surroundings on relatively short timescales. (3) *Measurements sensitive to gas-exchange chemistry* include those measurements that target the chemical and isotopic composition of redox-sensitive gases (*i.e.*, O₂, CO₂, H₂, H₂S, SO₂, NO_x, ClO_x), which are known to exchange or be released from their host phases (*i.e.*, mineral surfaces or lattices) over relatively short timescales. (4) *Surface chemistry and reactivity of regolith or dust samples* includes measurements that target reaction between regolith materials and H₂O or various reagents. The time-sensitivity underpinning these measurements arises because of volatile-exchange processes among minerals and mineral surfaces in materials where finely particulate material (and therefore high total surface area) may be present. (5) *Sample preparation processes* include various solvent extraction procedures that may generate short-lived reactive intermediate compounds, which may degrade or otherwise react with sample materials.

3. Time-Sensitivity of MSR Investigations: Rationale

The initial list of 26 time-sensitive iMOST measurements includes a wide range of specific measurement types to be conducted on a variety of sample types. To identify and focus on the physical and chemical processes that underpin time-sensitivity and estimate their characteristic timescales, the Time-Sensitive Focus Group (TS-FG) has identified four key processes that underpin the time-sensitivity of all 26 time-sensitive iMOST investigations as follows: (1) degradation of organic material (including volatile compounds), (2) modification of sample headspace gas composition, (3) mineral-volatile exchange, (4) oxidation/reduction of redox-sensitive minerals. In what follows, this report summarizes current understanding of each of these four processes in the context of characteristic timescales (Figure 2), and the degree to which scientific information may be lost as a function of time if specific iMOST measurements cannot be completed on very short timescales (Table 4). The report traces the 26 time-sensitive measurements in the context of these four processes to ensure that no measurements were disregarded during the study.

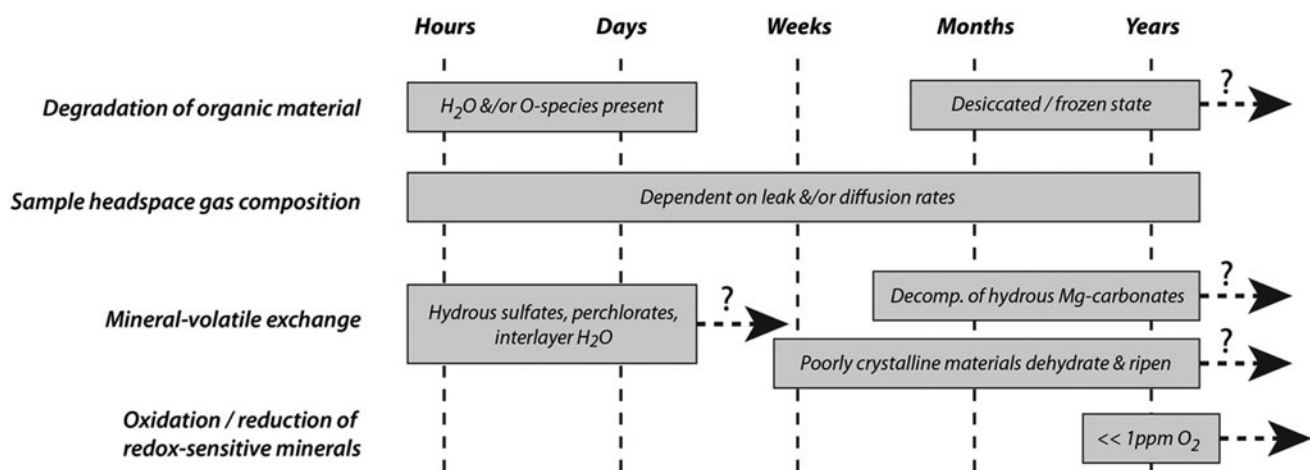


FIG. 2. Characteristic timescales of processes that underpin the time-sensitivity of MSR measurements. Some processes (such as the degradation of organic material and mineral-volatile exchange) are associated with different timescales depending on other factors such as environmental conditions and mineralogy.

4. Time-Sensitive Processes and Their Characteristic Timescales

4.1. Degradation of organic material (including volatile compounds)

Cells are constructed from many different molecules, but their architecture is dominated by four major classes of macromolecules: lipids, proteins, nucleic acids, and carbohydrates. As all these molecules are chains whose length (*i.e.*, the number of monomers linked together to make the completed molecule) is generally much greater than can be achieved abiotically. When they are not actively repaired by

a cellular apparatus, they tend to fragment. This rate of fragmentation/destruction varies and is greatly influenced by the chemical environment in which they are located. In this section, the term “macromolecule” is generally used to refer to the major classes of molecules in extant organisms, but the principles of degradation discussed also apply to some complex organic molecular structures, potentially including biosignature molecules such as kerogen and its components.

An example of the environmental dependence of biological macromolecule stability is the nucleic acid, DNA. In natural environments on Earth, once an organism dies, the

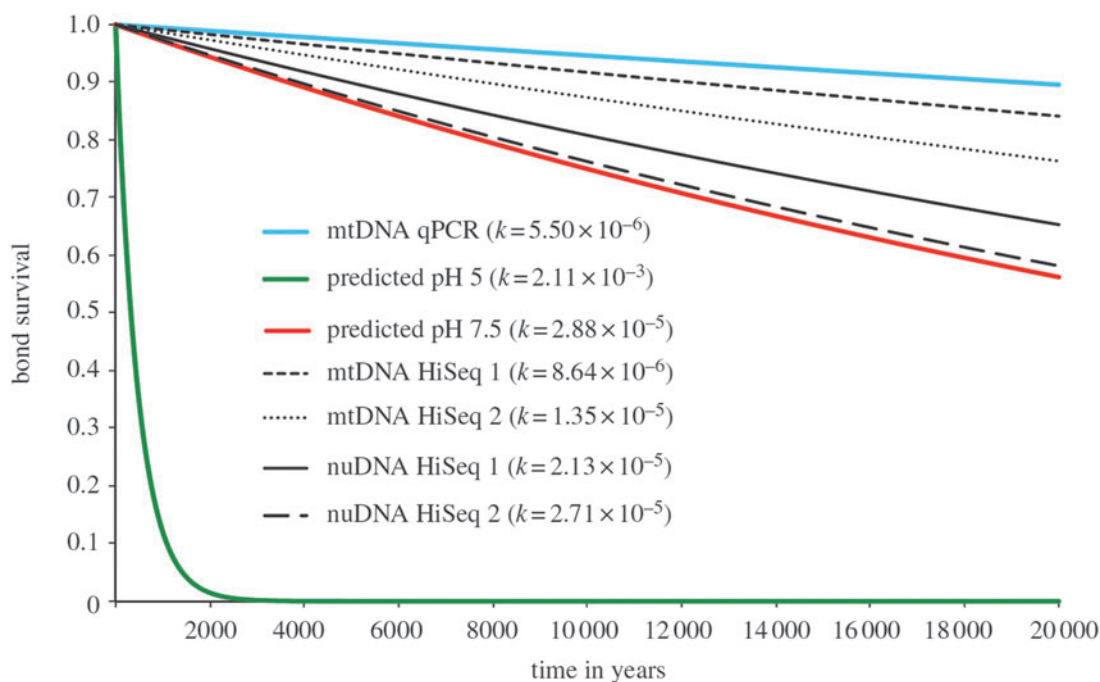


FIG. 3. DNA half-life exceeds hundreds of years in bone when storage conditions are appropriate (from Allentoft *et al.*, 2012). The green line shows the predicted rate of DNA degradation at pH 5.0 based on depurination calculations illustrating the change in rate of degradation depending on chemical environment.

DNA is degraded by microorganisms. However, even in the absence of biological activity, DNA undergoes spontaneous hydrolysis (depurination), which results in the loss of purine residues (adenine and guanine) and results in DNA strand cleavage. This leads to an inexorable decay of DNA (Figure 3). These depurination reactions, in the absence of specific catalysts, have the shortest half-lives of DNA degradation reactions (hundreds to thousands of years). However, other pathways include the hydrolysis of the phosphodiester bonds along the DNA backbone and the conversion of cytosine residues to uracil residues (deamination reactions). Specific conditions vary the rates of the reactions. For example, deamination reactions have half-lives of centuries in single stranded DNA on account of the more accessible nature of the bases compared to double stranded DNA. The presence of transition metals, which may be relevant for martian samples, can greatly accelerate the rate of phosphodiester bond breakage (*e.g.*, Gates, 2009).

The rate of degradation of DNA, as with all molecules, is strongly dependent on the chemical environment. Quantifying these factors and predicting the extent to which they change the half-life of the molecule is complex (Allentoft *et al.*, 2012). Factors that influence the rate of degradation include pH, ionic environment, and the presence of chemical species such as oxidants. Temperature is a strong determinant of stability, as expressed by the Arrhenius relationship, which describes the reduction in chemical reaction rates at lower temperatures. This is thought to account for the detection of DNA in ~ 500 kyr ice cores (Willerslev *et al.*, 2007).

There are two specific factors of relevance to the case of martian samples, which are important in accelerating the potential rate of decay of all macromolecules. First, the presence of water in a sample can accelerate decay since it provides a liquid medium for the movement of radicals and other chemical species deleterious to macromolecules. In the absence of water, molecules largely remain in a chemically inactive state, although they will still be subject to radiation damage, for instance, in the natural environment. In a martian sample, the presence or release of liquid water into the sample creating an aqueous environment around macromolecules can, in principle, allow chemical reactions to occur more rapidly. Regardless of the status of water in any given sample, this point would also apply to sample material into which water was added for analytical procedures.

Second, the rates of destruction of macromolecules can be greatly enhanced by the presence of reactive oxygen species (Imlay *et al.*, 1988). For example, the presence of hydrogen peroxide can result in destruction of DNA within minutes. The mechanisms of degradation are not fully elucidated (Linley *et al.*, 2012); however, single-strand breakage caused by the formation of reactive oxygen species, hydroxyl radicals and associated species are likely pathways. Significantly, with respect to martian samples, the presence of iron can facilitate Fenton-mediated reactions that increase degradation rates (Linley *et al.*, 2012).

Similar to DNA, proteins can degrade over periods with half-lives corresponding to hundreds of years under certain conditions, which is far greater than the time periods associated with Mars sample analysis (Radzicka and Wolfenden, 1996; Smith and Hansen, 1998) (Figure 4).

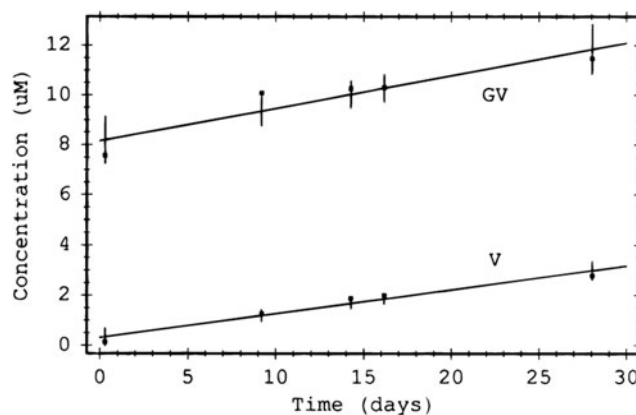


FIG. 4. Production of glycyl-valine (GV) and valine (V) from their N-(phenylacetyl)glycyl-D-valine precursor (splitting of peptide bond) at a pH of 7 in water (Smith and Hansen, 1998). These data lead to half-lives at neutral pH conditions of ~ 250 years.

However, as with DNA, the presence of reactive oxygen species in aqueous conditions increases the rate of protein destruction (Dean *et al.*, 1996) by direct chemical interaction with amino acids and their connecting peptide bonds. These reactions are influenced, potentially enhanced, by the presence of transition metals, with relevance to martian samples. The order of magnitude increase of the reaction rate cannot be easily predicted for any natural system since, as with DNA, it is determined by a variety of parameters (pH, ionic environment, temperature, concentration of transition metals, radiation environment, etc.), but destruction could occur, in principle, at room temperature and in the presence of oxidants such as hydrogen peroxide on the order of minutes/hours (*e.g.*, Kim *et al.*, 2000).

FINDING T-1: Aqueous phases, and oxidants liberated by exposure of the sample to aqueous phases, mediate and accelerate the degradation of critically important but sensitive organic compounds such as DNA.

FINDING T-2: Warming samples increases reaction rates and destroys compounds making biological studies much more time-sensitive.

Qualitatively, from the point of view of time-sensitive science and martian samples, the points raised above illustrate an important principle that motivates our recommendations: *macromolecular stability is generally on the order of many years under optimal or near-optimal storage/preservation, but in the presence of chemically reactive species that are known to be relevant to the martian surface, half-times of many key molecules can be reduced to the order of minutes.* Although it is currently not possible to quantify these rates exactly, as they depend on the diversity of chemical and physical parameters associated with any given samples, we can state that the minimization of the exposure of samples to conditions (*e.g.*, reactive oxygen species, temperatures greater than ambient room temperature) known to cause macromolecular destruction should be our goal.

Of course, if samples do contain oxidants, then the destruction may have already occurred on the martian surface prior to collection or within the enclosed micro-environment of the sample tube. However, once we have the samples in an SRF, it is prudent to investigate and store the samples in such a way as to minimize their exposure to conditions known to accelerate destruction of biomolecules.

We do not know what organic macromolecules could exist in a martian sample because of the unknown status of any putative life in them. Given the potential for martian life to have evolved with different molecular architectures, we cannot surmise *a priori* how similar its component molecules would be to those of life on Earth. Hence we propose that the analytical capability should be sufficiently capable to allow for the analysis of a range of different classes of known bioorganic molecules, as well as enable agnostic detection of a range of organic molecular structures.

The visual detection and localization of cellular material and its associated organic signature can be initially carried out by confocal microscopy equipped with Raman/FTIR/UV fluorescence to investigate for the presence of discrete cell-size concentrations of organic matter or cell-like objects and once pliable extracellular relicts. DNA extraction and analysis are specifically focused on the key information molecule of life on Earth, and the capacity to carry out this analysis should be present in case any other evidence of life was detected. We suggest a range of mass spectrometry methods capable of analyzing proteins, lipids, and small molecular weight metabolites associated with life (Section 6.2). These latter methods provide a high degree of agnostic analytical capability since they can detect generic organic molecules.

MAJOR FINDING T-3: Given the potential for rapid degradation of biomolecules (especially in the presence of aqueous phases and/or reactive O-containing compounds), Sample Safety Assessment Protocol (SSAP) and parallel biological analysis are time sensitive and must be carried out as soon as possible.

FINDING T-4: If molecules or whole cells from either extant or extinct organisms have persisted under present-day martian conditions in the samples, then it follows that preserving sample aliquots under those same conditions (*i.e.*, 6 mbar total pressure in a dominantly CO₂ atmosphere and at an average temperature of -80°C) in a small isolation chamber is likely to allow for their continued persistence.

In situ measurements of the martian atmosphere and evolved gases released from near-surface sedimentary rocks and aeolian materials in Gale crater by Curiosity (*e.g.*, Conrad *et al.*, 2016) and analyses of SNC meteorites (*e.g.*, Ott, 1988; Bogard *et al.*, 2001) indicate that volatile compounds could be present in the samples and headspace gas collected by Perseverance in Jezero Crater. Variable levels of methane that exhibit a seasonal variation have been measured in the atmosphere in Gale crater by the Sample Analysis at Mars (SAM) tunable laser spectrometer (TLS)

with an average value of 0.4 ppbv (Webster *et al.*, 2018) and temporary elevated spikes up to 7 ppbv (Webster *et al.*, 2015). These levels of methane are consistent with small sources of methane released from the martian surface or subsurface reservoirs. Higher abundances of methane evolved from drilled rock powders during pyrolysis heating (ppm levels) were also detected by the SAM TLS instrument (Webster *et al.*, 2018), and martian methane that is believed to reside in fluid inclusions or along crystal boundaries has also been released from several martian meteorites by crushing at room temperature (Blamey *et al.*, 2015). A variety of other volatile compounds that include chloromethanes, chlorobenzenes, simple alkanes, dimethylsulfide, methanethiol, and thiophenes have been identified by SAM above background levels during evolved gas analyses and GCMS analyses of sedimentary rocks in Gale crater (Ming *et al.*, 2014; Freissinet *et al.*, 2015; Eigenbrode *et al.*, 2018; Szopa *et al.*, 2020). Although some of these volatiles detected by SAM may be derived from the breakdown of less volatile macromolecular organic matter or from chemical reactions during pyrolysis heating, it is possible that near-surface martian materials in Jezero Crater will contain volatile compounds that could be lost from the samples during sample processing after the tube seals are opened or their concentrations reduced over time due to exposure to elevated temperatures (*i.e.*, >20-25°C) in curation.

The analysis of volatile compounds returned from the Moon during Apollo missions and from comet Wild 2 by the Stardust probe have also showed evidence of loss of sample volatiles under positive pressure in an N₂ glove box at ~20°C. For example, evolved gas measurements of Apollo 16 soil 61221 soon after the lunar sample was returned to Earth showed that the sample was volatile-rich, with HCN comprising ~5-10% of the total evolved gas released (Gibson and Moore, 1973). Gibson and Moore suggested that the HCN in the lunar soil was derived from a nearby cometary impact while other investigators have suggested that HCN could be derived from solar wind implanted precursors (Holland *et al.*, 1972). HCN and other volatiles, including NH₃ and formaldehyde, are also likely chemical precursors for amino acids that have been identified in lunar samples (Fox *et al.*, 1976; Brinton *et al.*, 1996; Elsila *et al.*, 2016). A later investigation of the same Apollo 61221 soil analyzed by Gibson and Moore did not detect HCN in the sample (Epstein and Taylor, 1993), which could be a result of sample heterogeneity or loss of HCN from the sample in curation. During the Apollo era, lunar curators and scientists recognized the fact that HCN and other volatiles could be lost from the samples during long term storage in a nitrogen-purged cabinet at room temperature, so they placed some of the lunar samples in special curation conditions. These include sample cores sealed under vacuum on the lunar surface in containers with indium knife-edge seals that could still hold vacuum today. Some of the Apollo 17 samples were also transferred to a freezer at -20°C within a month after their return to Earth. The vacuum-sealed, standard room temperature, and cold curated Apollo samples are all currently being processed for analyses as part of the Apollo Next Generation Sample Analysis (ANGSA) Program. For example, a sample portion taken from the bottom of the Apollo 73002 upper drive tube core (Figure 5) *within 2 days* after tube opening was shipped to NASA Goddard for

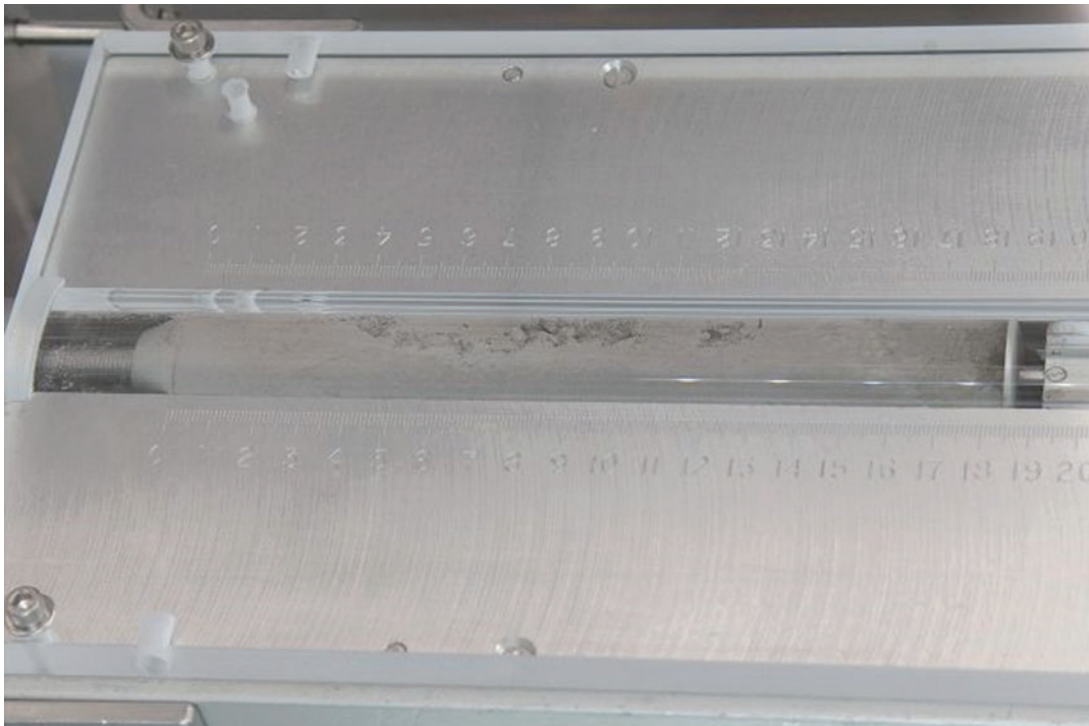


FIG. 5. Photo of the Apollo 17 upper drive tube core 73002 that is being processed for analysis under the ANGSA Program. Image credit: NASA/James Blair.

volatile organics analyses that includes HCN, aldehydes/ketones, amines, carboxylic acids, and amino acids (personal communication, J. Elsila on 11/7/19). Gas extraction and headspace measurements of volatiles in the vacuum-sealed Apollo drive tube will also be performed during ANGSA. The results of these measurements could help inform the curation and analysis strategy for Mars Sample Return.

Volatile loss has also been inferred through the analyses of amino acids extracted from comet-exposed samples returned from comet Wild-2 by the Stardust mission and stored unsealed at room temperature (Elsila *et al.*, 2009; Glavin *et al.*, 2008). The work involved analyses of 13 different samples of aluminum foil from the Stardust collector over the course of 37 months (July 2006 to August 2009). A strong negative correlation was observed between the concentration of glycine detected from acid-hydrolyzed water extracts of the foils and the number of days in curation (Figure 6). Given these results and the fact that glycine itself is not volatile under these conditions, it seems plausible that the decrease in observed abundances of glycine in the water extracts is due to the loss of volatile precursors on the foil, including HCN, formaldehyde, and possibly other molecules. The apparent glycine abundance from Stardust foils stored under standard curation conditions, which decreased over time (60 pmol/cm²/day) equates to a reduction of ~0.1% of the volatile glycine precursor each **day** (Figure 6). Although volatiles in the returned martian samples may be bound and, therefore, more protected from loss because of the presence of a mineral matrix that may form non-volatile salts or adsorb volatiles more strongly than the Stardust aluminum foils, the Stardust data suggest that standard curation conditions can lead to loss of organic

compounds of astrobiological interest. For these reasons, a portion of the sample returned by the OSIRIS-REx asteroid sample return mission will be stored in hermetically sealed containers (personal communication, J. Dworkin on 2/18/21).

FINDING T-5: Volatile compounds (*e.g.*, HCN and formaldehyde) have been lost from Solar System materials stored under standard curation conditions.

Oxidants and other reactive species have been detected or inferred to be present on Mars in both the atmosphere and regolith by previous missions. The formation and presence of pathways for oxidants in the atmosphere and martian near surface have been an area of significant scientific interest given that oxidizing substances can rapidly destroy or degrade organic compounds, which has implications for strategies to search for evidence of life on Mars (see Figure 7, Lasne *et al.*, 2016). The main oxidants that have been detected or suggested to be present on Mars include iron and magnesium perchlorate salts, which were identified during the Phoenix lander mission (Hecht *et al.*, 2009; Kounaves *et al.*, 2014) and present in samples analyzed by Curiosity in Gale Crater (Stern *et al.*, 2017). Iron-bearing species such as Fe₂O₃ or FeO₄²⁻ are much less stable (Christenson *et al.*, 2004; Tsapin *et al.*, 2000), and reactive oxygenated species that include peroxides, superoxide, O₂⁻ superoxide radical ions (Oyama *et al.*, 1977; Yen *et al.*, 2000), and H₂O₂ (Clancy *et al.*, 2004; Encrenaz *et al.*, 2004) have been detected in the atmosphere and estimated to be present at part-per-million levels in the regolith (Zent and McKay, 1994;

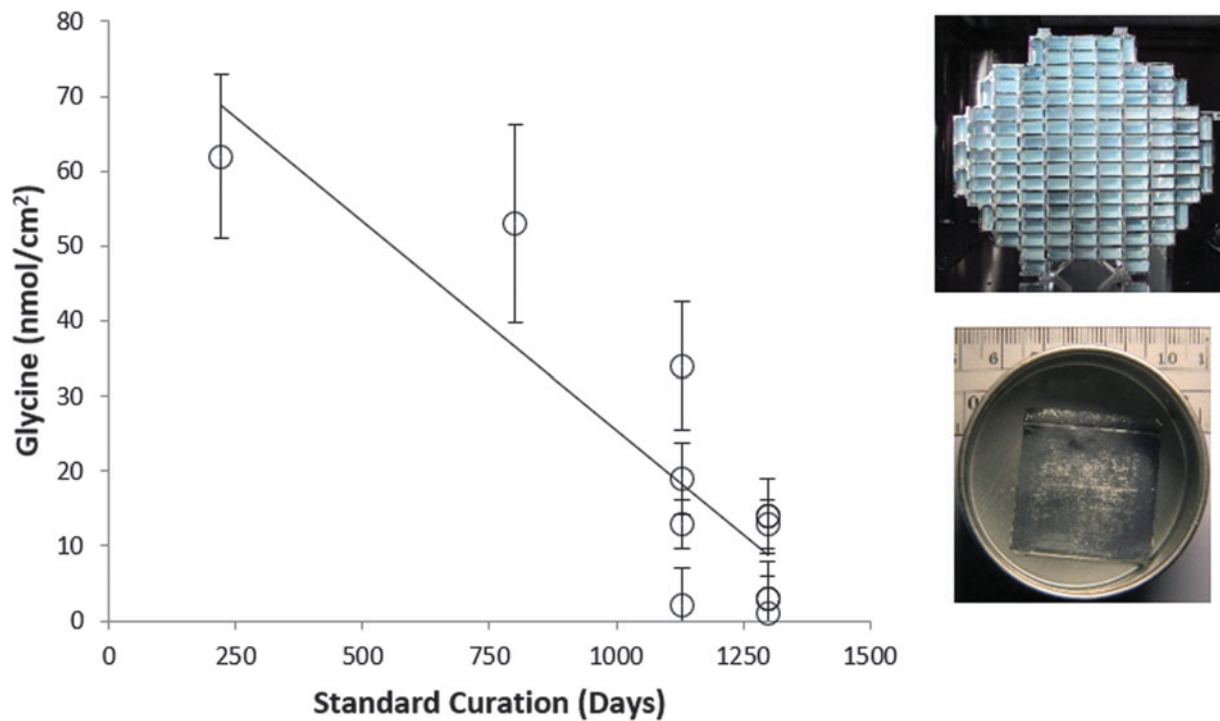


FIG. 6. A decrease in abundance of glycine in Stardust collector foil extracts suggests loss of volatile precursors from foils with time in standard curation (data from Glavin *et al.*, 2008 and Elsila *et al.*, 2009).

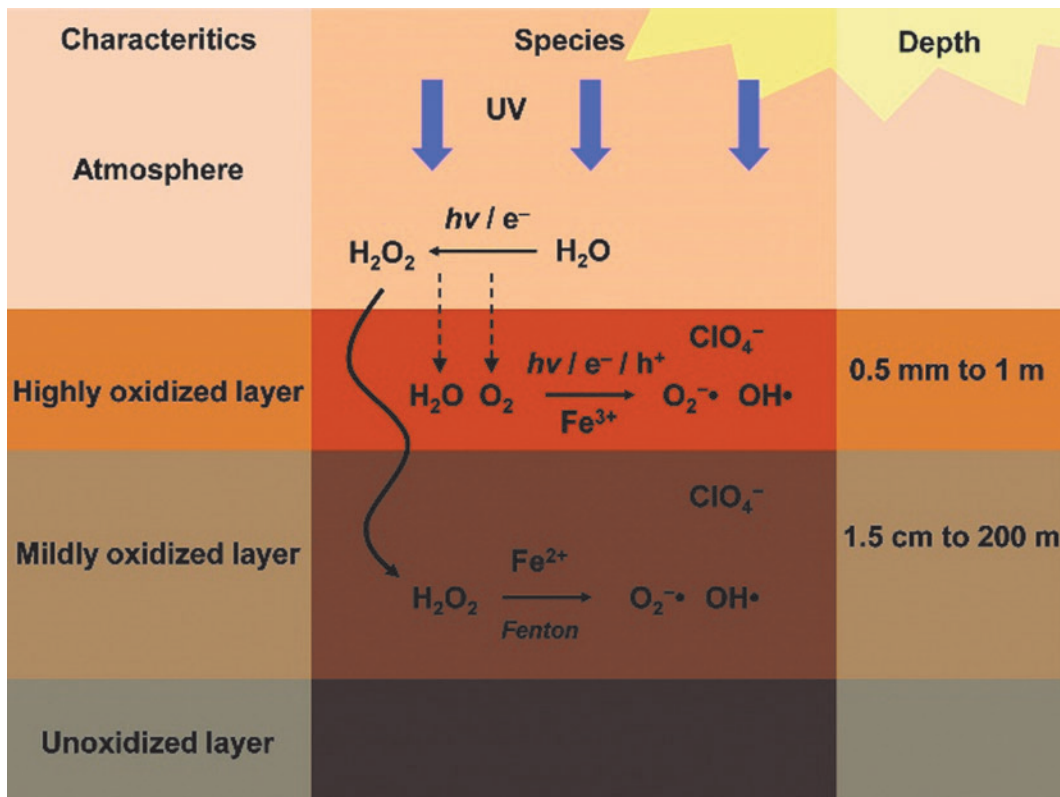


FIG. 7. Simplified schematic of the oxidizing layers and formation of reactive O-species on Mars (from Lasne *et al.*, 2016)

Yen *et al.*, 2000). Although perchlorate salts are thermally stable under martian ambient conditions and will not decompose or react with organic compounds until they are heated to 200°C or higher (Glavin *et al.*, 2013; Sutter *et al.*, 2017), peroxides and other reactive oxygenated species in a martian sample are much less stable and can rapidly oxidize and degrade organic compounds, especially at temperatures above 30°C and in the presence of liquids. For example, the oxidation of aliphatic hydrocarbons by *t*-butylperoxy radicals at 60°C is ~16x faster than at 30°C (Korcek *et al.*, 1972). In general, chemical reaction rates double for every 10°C increase in temperature.

The most direct evidence for the chemical reactivity of near-surface martian samples and the impact of elevated temperatures on the activity of the samples comes from the Viking Labeled Release (LR) experiments. In the LR biology experiments, scooped soil from the upper few centimeters at the Viking 1 and 2 lander sites was transferred into a sealed and pressurized cell, and a nutrient solution containing ¹⁴C labeled glycine, alanine, formate, and glycolate was added to the soil to determine whether there was any evidence for metabolic activity that would produce volatile byproducts such as CO₂. The radioactivity from any ¹⁴C labeled byproducts in the headspace was then measured as a function of time after soil exposure to the nutrient mix. As shown in Figure 8, radioactivity of the headspace gas that was measured by the Viking 1 LR instrument above background levels indicated some activity in the soil. However, no radioactivity was recorded after preheating the soil to 160°C for 3h, which presumably inactivated the soil prior to injection of nutrients into the cell. The soil was mostly inactivated after 50°C heating for 3h, though it continues to be further inactivated after storage in the dark at temperatures from 10-26°C over several months (Figure 8). Levin and

Straat (1976; 1977; 1979, 2016) argue that these LR results are consistent with biological activity in the soil, while others argue that the LR measurements are best explained by the reaction of organics in the nutrient solution with non-biological substances, such as hypochlorite (ClO⁻) or other oxidants in the martian soil that could have been generated by the degradation of perchlorates by ionizing radiation (Quinn *et al.*, 2013). Regardless of the source of the soil activity (biologic or non-biologic), it is clear from the LR experiments that both elevated temperatures and time will lead to a reduction in soil activity.

Detailed biological and chemical analyses of unconsolidated regolith and other rock samples returned from Jezero Crater will be crucial in answering the question as to the nature of the active agent(s) in the soil samples analyzed by the Viking Lander. Given that regolith samples in Jezero Crater may have already been heated to a maximum temperature of 10°C prior to collection and the cached sample tubes could see periodic temperature excursions up to ~30°C on the surface and during return to Earth, it is unclear whether reactive species in the samples will survive. Nevertheless, reactive oxygenated species have been identified on the martian surface and in the atmosphere and could be present in the returned rock or soil samples or tube headspace. These species will rapidly degrade organic molecules, are unstable at elevated temperatures and humidity, and should be measured as soon as possible in the headspace gas and in the samples themselves after the sample tube seals are opened at the SRF.

If elevated abundances of volatile compounds such as methane, ethane, chloromethanes, along with others, and/or reactive O-containing species such as hydrogen peroxide are detected above background levels (background relative to levels measured in the headspace gas of the flight witness

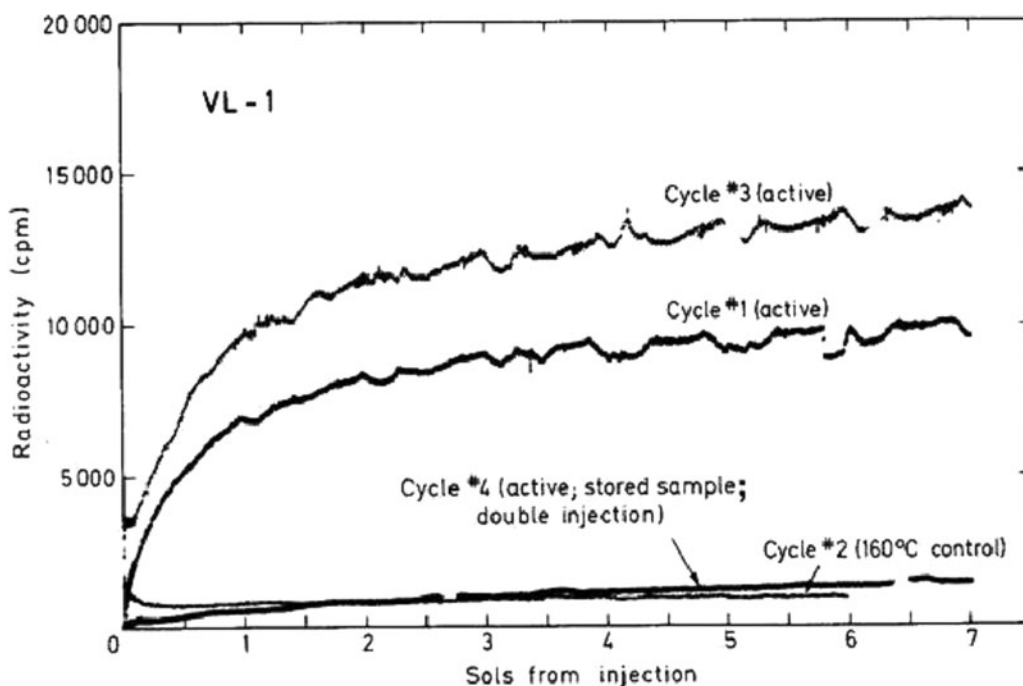


FIG. 8. Viking Lander 1 Labeled Release (LR) data indicates the active agent(s) in the soil are not stable at elevated temperatures (Levin and Straat, 1979)

tubes) in the sample tube headspace gas after extraction, then a portion of the remaining sample core should be hermetically sealed and stored in a freezer (at -20°C or lower) to prevent additional volatile loss and chemical reactions in the sample. Time-sensitive analyses targeting trace volatile species that could be present in sample tube headspace gases, such as water, methane, ethane, formaldehyde, chloromethanes, peroxides, hydrogen chloride, hydrogen sulfide, sulfur dioxide, hydrogen cyanide, nitrogen oxide, and ammonia, should be done initially by using non-destructive techniques such as cavity ring-down spectroscopy. In addition, quantification of the nature and abundance of any adsorbed reactive oxygenated species in the solid sample when using non-destructive methods such as electron paramagnetic resonance spectroscopy should be made prior to exposure of the sample to solvents or elevated temperature and humidity.

FINDING T-6: Reactive O-containing species have been identified *in situ* at the martian surface and so may be present in rock or regolith samples returned from Mars. These species rapidly degrade organic molecules and react more rapidly as temperature and humidity increase.

4.2. Modification of sample headspace gas composition

The quantity of gas contained within the sample tube headspace will be small, that is, ~ 13 cc, 7 mbar, equiv. to ~ 4 micromoles max for an empty tube, an order of magnitude less for tubes filled with solid samples. Although this amount would be sufficient to make noble gas and some stable isotope measurements (e.g., C in CO_2), it would not be sufficient to make all high-quality isotope measurements (e.g., N, triple O isotopes, C and N isotopologues, noble gas elemental and isotopic ratios; Swindle *et al.*, 2022). Such a small amount of gas would make it sensitive to post flight contamination.

While no detectable leaks of the seals on the sample tube test units have been observed after environmental testing under a variety of conditions in the laboratory (He leak rate $< 1 \times 10^{-10}$ atm-cc/sec), the leak rate is not constrained to be low enough to prevent loss of a substantial amount of an atmospheric sample (Cockell *et al.*, 2022). Seals made under laboratory conditions show minimal loss, though it is not known how dusty the conditions on Mars will be, or how other conditions may affect the leak rate of individual seals. The precise leak rates for each seal will not be known until they have been analyzed on Earth. Thus, the risk that much, or all, of the headspace gas in some of the sample tubes could be lost to leakage or contamination, rendering it useless, is considered substantial.

After disassembly of the Earth Entry Vehicle (EEV) inside the SRF to remove the OS and its sample tubes, the ambient pressure in the facility will be two orders of magnitude higher than that of the interior of the sample tubes. The difference in the partial pressure of nitrogen between the sample tube exterior and interior is expected to be even higher because nitrogen, a trace constituent in the martian atmosphere, is the major constituent in Earth's

atmosphere and the facility where the tubes would be curated. Contamination, even associated with a very small leak, could render some of the most important measurements (*i.e.*, of chemical composition) impossible (Swindle *et al.*, 2022).

FINDING T-7: Because the sample tubes would not be closed with perfect seals and because, after arrival on Earth, there will be a large pressure gradient across that seal such that the probability of contamination of the tube interiors by terrestrial gases increases with time, the as-received sample tubes are considered a poor choice for long-term gas sample storage. This is an important element of time sensitivity.

As discussed above, and examined in more detail below, volatile exchange between minerals and ambient surroundings (whether in the sample tube or the curation environment once sample headspace gas has been extracted) may also modify sample headspace gas composition. Depending on the minerals present within the sample tube and the material's volatile content and exchange history, solid samples may continue to de-gas within biocontainment even after headspace gas has been extracted and analyzed (see Section 4.3 on loss of mineral-bound volatiles over time). This has the potential to jeopardize scientific investigations that target mineral-bound volatile components and/or the solid phases with which they are associated. The outcome of the Time-Sensitive Focus Group's investigations of mineral-volatile exchange (discussed at length below in Section 4.3) lead to the following findings and recommendations for the treatment and analysis of sample headspace gas:

MAJOR FINDING T-8: To determine how volatiles may have been exchanged with headspace gas during transit to Earth, the composition of martian atmosphere (in a separately sealed reservoir and/or extracted from the witness tubes), the sample headspace gas composition, the temperature/time history of the samples, and mineral composition (including mineral-bound volatiles) must all be quantified. When the sample tube seal is breached, mineral-bound volatile loss to the curation atmosphere jeopardizes robust determination of volatile exchange history between mineral and headspace.

4.3. Mineral-volatile exchange

Volatile exchange between solid phases and their immediate surroundings encompasses a range of processes that can occur on various timescales. The approach taken here is to examine the processes whereby volatiles are exchanged among minerals that have been identified or inferred to exist at the martian surface or within the shallow crust, particularly within Jezero Crater and its surroundings. This section focuses on mineral groups that are specifically referenced in the iMOST report and are known to exchange volatiles over timescales that may be relevant to the sample handling and curation workflow.

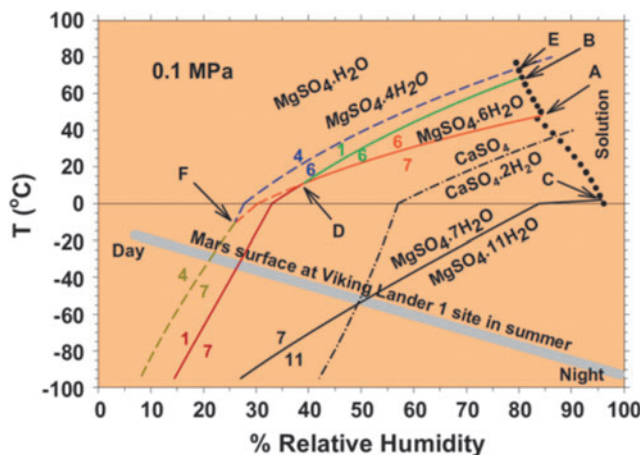


FIG. 9. Phase relations in the system $\text{MgSO}_4\text{-H}_2\text{O}$ at 0.1 MPa. Stable boundaries are shown by heavy solid curves, and metastable boundaries are shown by dashed curves. T-RH conditions of a martian day at the Viking Landing site in martian summer is shown with a thick solid gray line. Adopted from Chou *et al.* (2013).

4.3.1. Hydrated sulfate minerals. The stability, particularly the hydration states, of many hydrated sulfate minerals are dependent upon relative humidity (RH) and temperature (T) (*e.g.*, Chou *et al.*, 2013). At the martian surface, the RH changes from 5% to 100% over the course of a diurnal cycle (Figure 9), and the stability fields for various hydration states of sulfate minerals change considerably over this RH range at martian surface temperatures and pressures (Chou *et al.*, 2013; Wang *et al.*, 2009). Given that sulfate minerals have been detected in the Jezero Watershed (Salvatore *et al.*, 2018), they are among the possible mineralogical constituents that will be collected and cached in sample tubes by the Perseverance rover that would be brought back to Earth during the Mars Sample Return Campaign.

In contrast to the pressure (P), T, and RH conditions at the martian surface, the P, T and RH conditions of typical pristine curation gloveboxes like those that service the

Apollo sample collection at NASA Johnson Space Center (JSC) are much less variable and largely outside of the range of the martian surface (Allen *et al.*, 2011; McCubbin *et al.*, 2019). In fact, the Apollo gloveboxes are under a constant purge of gaseous N_2 that has ≤ 10 ppm H_2O (McCubbin *et al.*, 2019), which would establish a highly desiccating environment for any hydrated sulfate minerals.

The differences between martian surface conditions and those in the pristine sample environment in curation labs on Earth, coupled with the stability fields of hydrated sulfates as a function of P, T, and RH, indicate that there could be problems with preserving hydrated sulfates long term in the curation environment, although the degree to which hydrated sulfates represent a time-sensitive analysis in a sample return facility (*i.e.*, time-scale of 2-3 years) requires additional knowledge about the kinetics of hydration and dehydration reactions. Knowing that sulfate phases will likely be out of equilibrium with the SRF isolator conditions (Tait *et al.*, 2022) underscores the time-sensitive nature of analysis of these phases.

To date, experimental studies that have investigated the rates of dehydration of hydrated sulfate minerals have shown that it is dependent on T, RH, sulfate phase (composition), and grain size (Okhrimenko *et al.*, 2020; Okhrimenko *et al.*, 2017; Ritterbach and Becker, 2020; Wang *et al.*, 2009; Wang *et al.*, 2012). Although T and RH can be controlled by SRF facility requirements, the identity of the phases and their respective grainsizes will be intrinsic properties of the samples and unlikely to be known prior to opening of the tubes.

With respect to the effect of sulfate mineralogy on the rates of dehydration, magnesium sulfate hydrates/dehydrates on the order of hours or days at room temperature and low RH conditions (Okhrimenko *et al.*, 2020; Okhrimenko *et al.*, 2017; Wang *et al.*, 2009; Table 2), similar to that of the pristine Apollo sample gloveboxes (McCubbin *et al.*, 2019). Iron sulfates dehydrate/rehydrate on similar time scales to Mg sulfates (Wang *et al.*, 2012). In contrast to Mg- and Fe-sulfates, Ca-sulfates are less reactive and hydrate/dehydrate on the order of months or longer (Ritterbach and Becker, 2020).

TABLE 2. REACTION RATE RATIOS OF FIVE DEHYDRATION AND REHYDRATION PROCESSES OF MG-SULFATES RELEVANT TO MARS SULFATE MINERALOGY. ADOPTED FROM WANG *ET AL.* (2009).

	Duration (hours) at 294 K	Rate (1/s) at 294 K	Daytime on Mars		Nighttime on Mars	
			290 K	240 K	210 K	180 K
Temperature			290	240	210	180
Duration in hours at Gusev [Smith <i>et al.</i> , 2004, 2006]			>10	1-2	1-2	1-2
Estimated RH values based on the work of Smith [2002]			~0%	<1%	1-10%	~100%
			Rate Ratios Against the Rates at 294 K			
			290 K	240 K	210 K	180 K
Dehydrations						
7w → 4w at 11% RH	351	8E-07	<i>4E-01</i>	<i>1E-05</i>	<i>5E-09</i>	1E-13
7w → Am at <0.1% RH	2	1E-04	6.E-01	<i>3E-05</i>	<i>6E-09</i>	9E-14
Rehydrations						
4w → 6w/7w at 100% RH	19	1E-05	7E-01	5E-03	<i>1E-04</i>	<i>7E-07</i>
1w → 6w/7w at 100% RH	44	6E-06	1E+00	2E-01	<i>5E-02</i>	<i>9E-03</i>
Am → crystalline at 100% RH	21	1E-05	1E+00	2E-03	<i>2E-05</i>	<i>6E-08</i>

^aData in four columns at the right side of this table are rate ratios at four Mars relevant temperatures against the rates at 294 K (21°C). These ratios were obtained through the extrapolations of rate constant vs. T correlation shown in Figure 10. Italic font marks the rate ratios during a period when the specific dehydration or rehydration process would be favored at the RH conditions on Mars, indicated in Figure 11 as periods 1, 2, and 3.

With respect to the effects of grainsize on the kinetics of hydration/dehydration of sulfate minerals, the rate-limiting step is related to transfer at the surface of the grain (transfer coefficient) rather than diffusion within the crystal structure (Okhrimenko *et al.*, 2020). Consequently, the rate of dehydration is inversely correlated with grainsize and is highly dependent on the total surface area of the sulfate minerals present (Okhrimenko *et al.*, 2020).

Although the sulfate phases are likely to evolve within the sample tubes after collection, being able to back out that history to determine the state of the sulfates at the time of collection is predicated on knowing the state of the sulfates once the samples are first opened. If the sulfates dehydrate in the SRF, that history will be difficult, if not impossible, to discern. In addition, the characterization of mineral-bound volatiles, including those bound in hydrous sulfate minerals, is central to achieving several objectives central to returned sample science that relate to geological environments and the evolution of climate (Beaty *et al.*, 2019). Consequently, phase transitions among hydrous sulfate minerals that may take place in biocontainment not only jeopardize investigations that target mineralogical properties but also those that target the chemical and isotopic composition of volatiles.

FINDING T-9: Previous experiments with mineral powders show that sulfate minerals are susceptible to H₂O loss over timescales of hours to days. In addition to volatile loss, these processes are accompanied by mineralogical transformation. Thus, investigations targeting these minerals should be considered time sensitive.

Currently, we do not know of a viable mitigation strategy for preserving the state of the sulfates in the samples at the time of sample tube opening other than storing the samples at temperatures below the lowest sulfate closure temperature. Mitigation strategies at room temperature could be developed by buffering the RH of the surrounding atmosphere. However, the RH value that would be needed is dependent on the specific sulfate phase that is to be preserved, and knowledge of the specific sulfate phase(s) present in the tubes will not be known at the time of tube opening. If the identity of sulfate phases can be determined quickly, RH could be used to preserve those sulfates after their identification.

FINDING T-10: Sulfate minerals may be stabilized by storage under fixed relative-humidity conditions, but only if the identity of the sulfate phase(s) is known *a priori*. In addition, other methods such as freezing may also stabilize these minerals against volatile loss.

4.3.2. Poorly crystalline and X-ray amorphous materials. The CheMin instrument (an X-ray diffractometer) on board the Mars Science Laboratory has shown that every single sample analyzed thus far contains a measurable amount of X-ray amorphous material (Smith *et al.*, 2018). This result is consistent with previous spectroscopic observations (Singer 1985) of the martian surface as well as laboratory analysis of martian meteorites (McSween Jr.,

1994). *In situ* analyses by CheMin indicate that the X-ray amorphous content ranges from 15-70 wt% in these samples (Figure 10; Smith *et al.*, 2018). Several processes, including volcanism, aqueous alteration, and impact metamorphism, can induce X-ray amorphization of crystalline materials (Rampe *et al.*, 2014). Volcanic and impact processes also drive the formation of silicate melts that solidify as X-ray amorphous glasses (Friedman and Long 1984). Aqueous alteration, which can amorphize minerals *in situ* and facilitate dissolution/reprecipitation reactions, and aqueous precipitation (*e.g.*, from hydrothermal fluids) can produce X-ray amorphous and poorly crystalline nanominerals (minerals that only exist at the nanoscale), colloids, and mineral nanoparticles. Candidate X-ray amorphous phases include opals, Fe, Al, Ti, Ca, and Mg oxides, and hydrated salts such as perchlorates (Hochella *et al.*, 2008; Banfield and Zhang 2001; Cornell and Schwertmann 2003; Navrotsky 2007; Carrier and Kounaves 2015). Such X-ray amorphous phases will react at different rates when the sample tubes are opened. Perchlorate salts and X-ray amorphous colloids (with high surface area) are expected to be the most reactive phases, followed by nanomaterials and poorly crystalline oxides. Characterization of these phases is a time sensitive measurement. Volcanic and impact glasses and hydrated opals react more slowly, hence their characterization is not considered time sensitive.

Perchlorate salts are probably the fastest reacting X-ray amorphous phases under typical laboratory conditions (*i.e.*, low RH and T between ~15-25°C). These salts are capable of hydrating and dehydrating in a matter of hours under martian surface conditions (Gough *et al.*, 2011). Their initial hydration state will depend on the martian T and RH when the sample tube is sealed (Figure 11). After the tube is sealed, it will become a closed system, and the perchlorates will re-equilibrate to these new conditions. As the T inside the tubes fluctuates during the caching period on Mars' surface and during the return flight, so too will the perchlorate hydration state. Although the initial hydration state

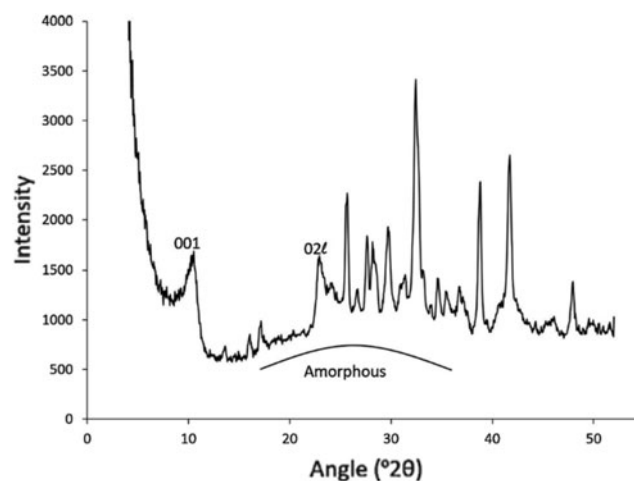


FIG. 10. A CheMin X-Ray diffraction pattern of the Marimba sample from the Murray formation, Gale Crater. The broad increase in the baseline between 18 and 35 2θ is attributed to the presence of X-ray amorphous phases. 001 and 02l refer to diffraction peaks attributed to clay minerals. Figure adapted from Rampe *et al.* (2020).

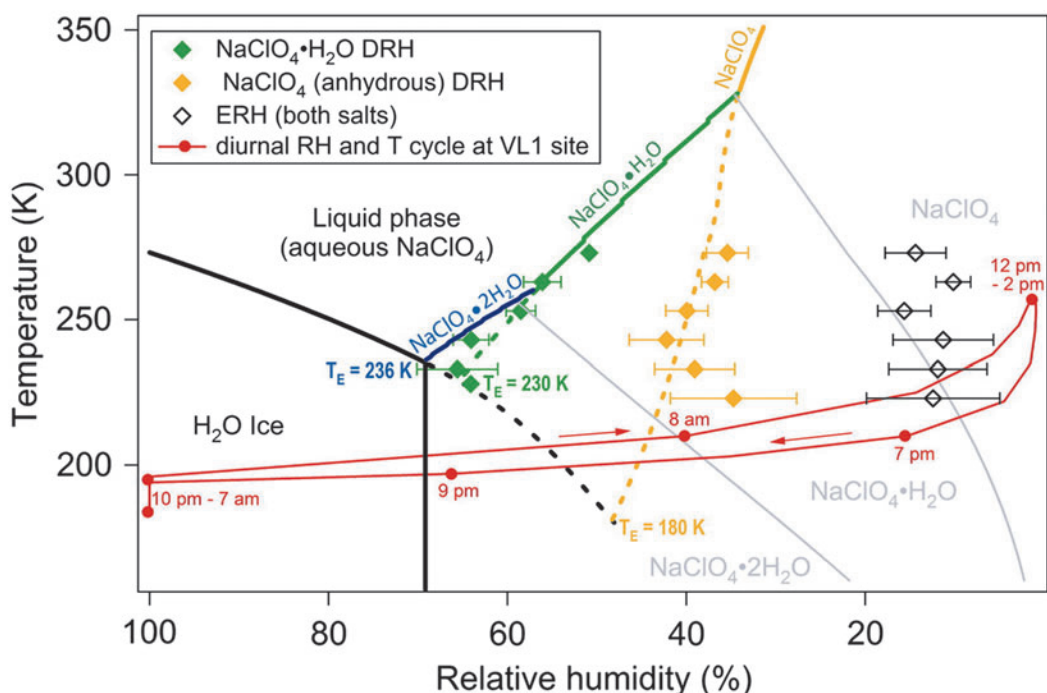


FIG. 11. A temperature vs. relative humidity phase diagram for water and Na-perchlorate at the Viking 1 Landing Site (VL1) showing how changes in temperature and relative humidity can cause perchlorate deliquescence relative humidity (DRH) and efflorescence relative humidity (ERH) to rapidly fluctuate. Figure adapted from Gough *et al.* (2011).

may not be preserved, it would be important to characterize the perchlorates at their equilibrium state inside the sealed tube because, like other minerals that host volatile components, they offer important constraints on volatile cycling on Mars, which underpins several iMOST objectives (Beatty *et al.*, 2019). This equilibrium state may be altered within a matter of hours (Gough *et al.*, 2011) when the sample tubes are opened under curation conditions (likely <10 ppm H₂O). However, although data are currently limited, the timescales over which hydrous perchlorate phases may re-equilibrate and/or exchange volatiles with their surroundings is likely a function of grain size, lithification, or cementation (all of which influence grain boundary diffusion of H₂O) and the relative humidity of the ambient environment as well (see Section 4.3.1 on hydrous sulfate minerals; Robertson and Bish, 2011). Thus, it may be possible that hydrous perchlorate minerals could be stabilized against phase transitions with relative humidity buffers, but this also requires *a priori* knowledge of the hydrous perchlorate phase in question.

FINDING T-11: Hydrous perchlorate salts are likely to undergo phase transitions and volatile exchange with ambient surroundings in hours to days under temperature and relative humidity ranges typical of laboratory environments. However, the exact timescale over which these processes occur is likely a function of grain size, lithification, and/or cementation.

Nanomaterials and mineral nanoparticles are characterized by a very high surface area to volume ratio (Hochella *et al.*, 2008). In general, nanoparticles behave differently than bulk minerals with a lower surface area to volume ratio (Banfield

and Zhang, 2001). For example, nanocrystalline iron oxides are characterized by higher enthalpies of water adsorption and higher Gibbs free energies of adsorption than bulk iron oxides. These differences stem from a higher relative abundance of surface sites and crystal lattice defects in nanomaterials than for bulk materials. As a consequence, nanocrystalline iron oxides such as ferrihydrite and hematite adsorb more volatiles per unit mass than bulk minerals (Wang *et al.*, 2013; Hiemstra *et al.*, 2019). However, although nanocrystalline iron oxides are capable of adsorbing more volatiles than bulk minerals, those volatiles are less tightly bound (Navrotsky *et al.*, 2008). Under curation conditions, which may result in the loss of surface adsorbed H₂O, nanocrystalline iron oxides are likely to aggregate and recrystallize to eventually form more coarsely crystalline bulk minerals. This recrystallization will, in turn, result in a reduction in mineral surface area and a corresponding loss of adsorbed volatiles. These reactions have been described in the context of Ostwald ripening (Hiemstra *et al.*, 2019), and their characteristic rates have been interpreted by using kinetic theory (Heaney *et al.*, 2020) (Johnson and Mehl, 1939); these processes are likely to occur over a matter of hours to weeks, depending on the crystallite size and identity of iron oxides present in the samples (Schwertmann and Cornell, 2000).

Phyllosilicate nanoparticles are also associated with higher surface areas than their bulk counterparts, but laboratory experiments suggest that smectite nanoparticles bind H₂O more strongly than bulk smectite. As this bound H₂O desorbs, the nanoparticles aggregate and coarsen, in turn, reducing the total surface area (Elprince *et al.*, 2015). The kinetics of this reaction are not well characterized, but on analogy to other nanoparticle systems, dehydration may

occur over the course of weeks to months under typical laboratory conditions.

Nanocrystalline Ti, Al, and some Fe oxides will undergo irreversible phase transitions as they dehydrate and coarsen. Ti oxides may convert from anatase to brookite (Navrotsky, 2007), and Al oxides may convert from the γ -Al₂O₃ phase to the α -Al₂O₃ (corundum) phase (McHale *et al.*, 1997). Metastable iron oxide phases such as ferrihydrite may transform into hematite or goethite depending on ambient conditions (Cornell and Schwertmann, 2003; Heaney *et al.*, 2020). All of these reactions are expected to occur on the order of days to months after opening the sample tubes under typical laboratory conditions. Therefore, the properties of nanocrystalline materials should be characterized in detail within \sim 1-3 months of opening the sample tubes. Most importantly, this should include structural analysis (*e.g.*, by total X-ray scattering and pair distribution function analysis) and replicate Brunauer-Emmett-Teller (BET) surface area measurements as a method to monitor the evolution of these phases as they are stored under curation conditions.

FINDING T-12: Nanocrystalline or X-ray amorphous materials are typically stabilized by high proportions of surface adsorbed H₂O. Because this surface adsorbed H₂O is weakly bound compared to bulk materials, nanocrystalline materials are likely to undergo irreversible ripening reactions in response to volatile loss, which in turn results in decreases in specific surface area and increases in crystallinity. These reactions are expected to occur over the timescale of weeks to months under curation conditions. Therefore, the crystallinity and specific surface area of nanocrystalline materials should be characterized and monitored within a few months of opening the sample tubes. These are considered time-sensitive measurements that must be made as soon as possible.

Volcanic and impact glasses are subject to devitrification, but this is expected to proceed slowly under typical laboratory conditions (Marshall, 1961; Yanagishima *et al.*, 2017). Replicate analyses of Apollo samples after storage for 40 years confirms the stability of glass phases (Taylor *et al.*, 2018). However, devitrification rates are temperature dependent, and small increases in temperature of 10-20°C could increase reaction rates (Rébiscoul *et al.*, 2015). Similarly, the reordering of opal-CT and its subsequent transition to quartz will proceed slowly under curation conditions (Duffy, 1993). Consequently, we do not consider characterization of these materials to be time sensitive.

FINDING T-13: Volcanic and impact glasses, as well as opal-CT, are metastable in air and susceptible to alteration and volatile exchange with other solid phases and ambient headspace. However, available constraints indicate that these reactions are expected to proceed slowly under typical laboratory conditions (*i.e.*, several years), and so analyses targeting these materials are not considered time sensitive.

4.3.3. Phyllosilicate minerals. Orbital and *in situ* data indicate that phyllosilicate minerals are relatively common and, in many cases, abundant within the martian crust (*e.g.*, Ehlmann and Edwards, 2014), in particular at Jezero Crater and the surrounding Nili Fossae region. Phyllosilicate minerals may exchange volatiles in several ways, but mineralogical and geochemical studies have shown that H₂O, the principal (but not the only) volatile associated with phyllosilicate minerals, may be accommodated through physisorption on crystallite surfaces and pores and within interlayers (Sposito and Prost, 1982; Schoonheydt and Johnston, 2006). Volatile signatures (*i.e.*, isotopic compositions) may be recorded by clay minerals through structural incorporation of O, which is derived from the H₂O the phyllosilicate initially crystallized from; structural O is generally stable and lost or exchanged at temperatures higher than a few hundred degrees Celsius and will not be considered further here.

A number of phyllosilicate minerals can also accommodate H₂O within interlayer spaces, which arise through the electrostatic repulsion of negatively charged tetrahedral-octahedral-tetrahedral (or so-called “2:1”) layers present in smectites, some vermiculites, and mixed layered varieties (Sposito and Prost, 1982; Schoonheydt and Johnston, 2006). The negative charges on adjacent layers require charge compensation by cations, which are accommodated within interlayers, and because they are weakly bound, they are generally exchangeable (Sposito and Prost, 1982; Schoonheydt and Johnston, 2006). The H₂O sorption behavior in smectite minerals has been extensively studied and is generally a strong function of the interlayer cation (*i.e.*, Li, K, Na, Ca, Mg) and the relative humidity. In general, as relative humidity increases, interlayer cations may be hydrated by zero, one, or two layers of H₂O molecules (Figure 12; Ferrage *et al.*, 2005). In addition, experimental studies performed on powders have shown that the incorporation and loss of H₂O from phyllosilicate interlayers and on surfaces involves significant hysteresis, largely because different mechanisms regulate the adsorption and desorption of H₂O from phyllosilicate minerals (Ferrage *et al.*, 2005; Schoonheydt and Johnston, 2006).

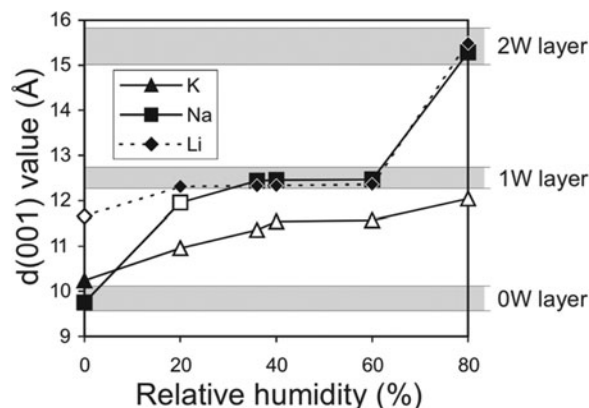


FIG. 12. Basal spacing of montmorillonite ($d(001)$) as a function of relative humidity and interlayer cation (Ferrage *et al.*, 2005). 0W, 1W and 2W refer to the number of H₂O “layers” hydrating interlayer cations.

The accommodation of interlayer H₂O in smectite minerals presently at the martian surface has been investigated from a thermodynamic point of view, which provides constraints on the amount and reactivity of H₂O that may be accommodated in clay-bearing samples sealed and returned from Mars (e.g., Bish *et al.*, 2003). For instance, although some experimental results published by Zent *et al.* (2001) suggest that Na-smectite would not be hydrated at martian surface conditions, thermodynamic estimates calibrated against laboratory measurements of H₂O sorption isotherms (Bish *et al.*, 2003) indicate a strong temperature dependence of H₂O sorption for Na-smectite and Ca-smectite (Figure 13), largely arising from enthalpy of hydration. Thus, Bish *et al.* (2003) concluded that at 215K, smectite minerals would be partially, though not entirely, dehydrated during the day, whereas smectites are likely to be significantly hydrated at night as the relative humidity reaches maximum values. These results imply that, for smectite-bearing materials, the time of sampling will strongly dictate the hydration state of interlayers once the samples are sealed. However, even though the accommodation of H₂O within smectite interlayers varies strongly across a diurnal timescale, this volatile component has the potential to provide valuable constraints on volatile cycling and long-term H₂O budgets that address several objectives identified in iMOST (Beatty *et al.*, 2019). Thus, regardless of the conditions of the time of sampling, interlayer-bound H₂O itself carries high scientific significance, and its detailed characterization should be performed in line with relevant timescales over which it may be lost when sample tube seals are breached, and the headspace gas is removed.

The timescales of interlayer H₂O exchange among phyllosilicate minerals has been studied extensively, though these have focused on powdered high-surface areas and often single-phase materials. In general, these studies show that, in response to changes in either temperature and/or relative humidity, smectite minerals re-equilibrate at timescales of minutes to several hours (Emerson, 1962, Likos and Lu, 2002) (Figures 14 and 15). Importantly, however, even though surface and interlayer-bound H₂O are ex-

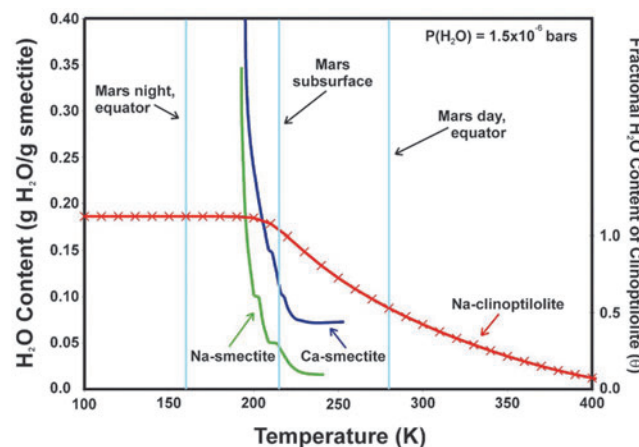


FIG. 13. Estimated hydration states of smectite and clinoptilolite under current martian surface conditions (Bish *et al.*, 2003).

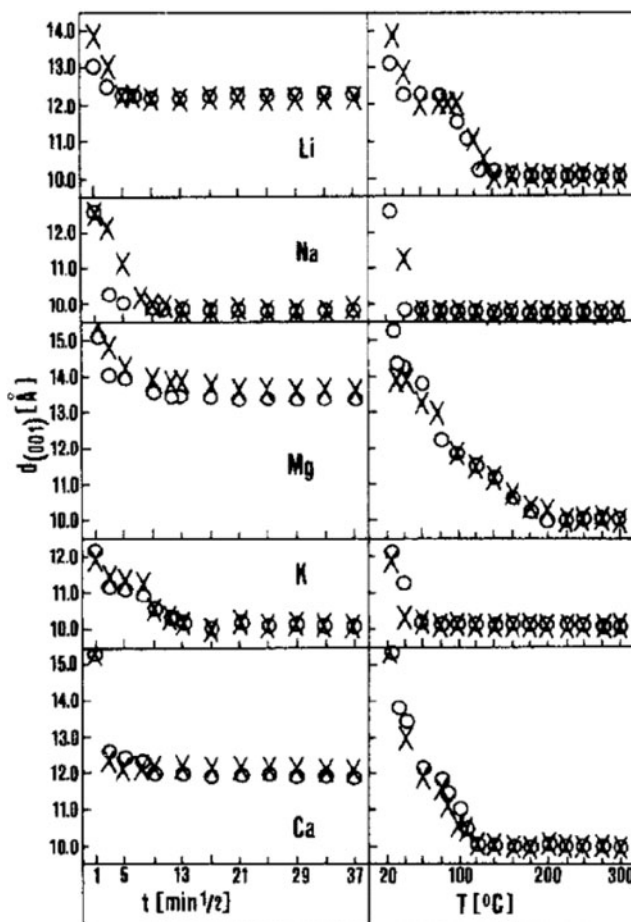


FIG. 14. Basal spacing of montmorillonite as a function of relative humidity, interlayer cation, and temperature. In response to changes in relative humidity or temperature, interlayer H₂O content adjusts (along with expansion or contraction of the interlayer spacing, $d(001)$) at timescales of minutes to hours in monomineralic samples (Emerson, 1962).

changed in response to temperature and relative humidity, most structural aspects of clay minerals (with exception of the interlayer spacing) remain intact.

FINDING T-14: Surface adsorbed and interlayer-bound H₂O in clay minerals is susceptible to exchange with ambient surroundings at timescales of hours to days, although the timescale may be modified depending on the degree of lithification or cementation. Even though structural properties of clay minerals remain unaffected during this process (with the exception of the interlayer spacing), investigations targeting H₂O or other volatiles bound on or within clay minerals should be considered time sensitive upon opening the sample tube.

4.3.4. Hydrus carbonate minerals. Exploration and sample return from Jezero Crater and the surrounding Nili Fossae region, where significant accumulations of carbonate

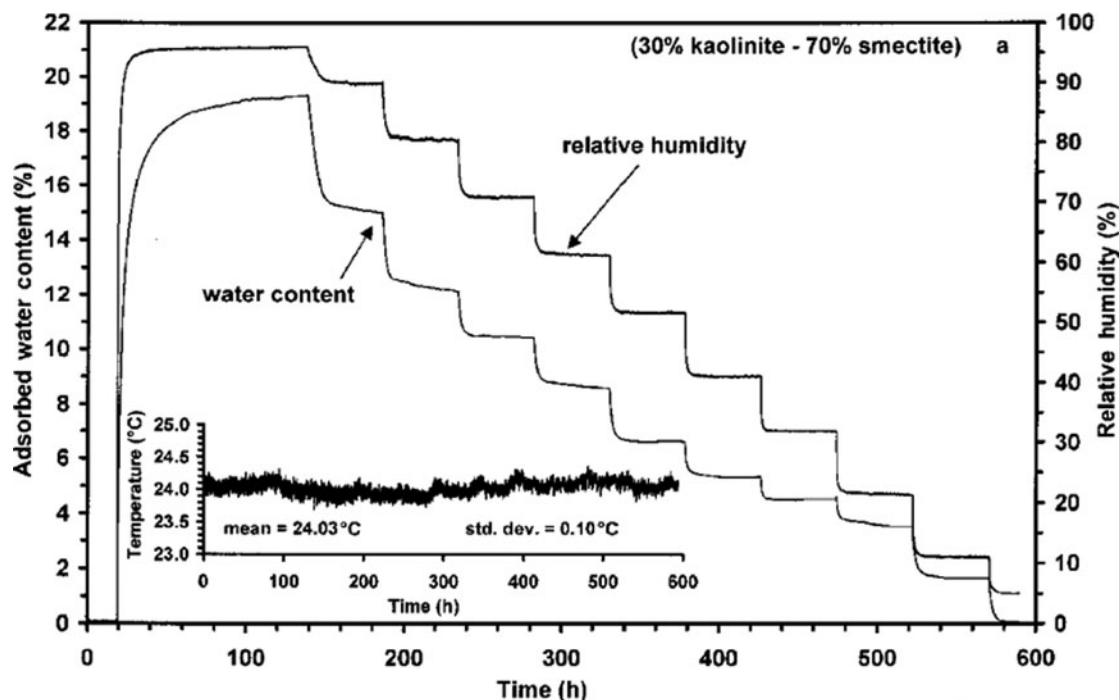


FIG. 15. Changes in adsorbed H₂O content of a 70% smectite / 30% kaolinite mixture at 24°C in response to stepped changes in relative humidity (Likos and Lu, 2002). The mixture re-equilibrates over timescales of hours to days.

minerals have been identified, warrant consideration of hydrous carbonate minerals and their potential for exchange with their surroundings.

From a thermodynamic point of view, calcite, magnesite, and dolomite are the stable carbonate phases in their respective chemical systems. Thus, all other hydrous carbonate phases (Table 3) are metastable with respect to these three phases, which immediately establishes a thermodynamic driving force for transformation in the presence of H₂O (*i.e.*, as a solvent or vapor phase). The timescales over which these transformations occur, however, are poorly understood in “dry” systems as a function of RH. Volatile exchange and phase transitions among hydrous Mg-carbonates have received more attention than for hydrous Ca-carbonates. The hydrous Mg-carbonates lansfordite and nesquehonite are known to lose H₂O and decompose to hydromagnesite in a dry state over a matter of months

(Davies and Bubela, 1973; Ming and Franklin, 1985; Morgan *et al.*, 2015), which is consistent with thermodynamic considerations in the Mg-carbonate system (Figure 16). However, the T-P dependence of these transformations is poorly understood. In addition, hydromagnesite has been observed to convert to stable magnesite in timescales of ~10-100 years (Davies and Bubela, 1973; Ming and Franklin, 1985; Morgan *et al.*, 2015). Although comprehensive studies are limited, highly hydrated Mg-carbonate phases are generally more stable at low RH, whereas higher RH and T values promote conversion to hydromagnesite (Wilson *et al.*, 2013; Morgan *et al.*, 2015). In addition to these studies, geochemical and mineralogical investigations have documented the formation of hydrous Mg-carbonate phases through interaction between thin films of water and Mg-silicate minerals over a period of several years at low temperatures characteristic of the Antarctic (Jull *et al.*, 1988; Velbel *et al.*, 1991; El-Shenawy *et al.*, 2020). In general, this work supports the conclusion that hydrated Mg-carbonates are susceptible to volatile loss and recrystallization and transformation over timespans of months and perhaps longer.

TABLE 3. ANHYDROUS AND HYDROUS CA-, MG- AND CA/MG-CARBONATE MINERALS.

calcite	CaCO ₃
aragonite	CaCO ₃
vaterite	CaCO ₃
monohydrocalcite	CaCO ₃ •H ₂ O
ikaite	CaCO ₃ •6H ₂ O
artinite	Mg ₂ (OH) ₂ CO ₃ •3H ₂ O
nesquehonite	MgCO ₃ •3H ₂ O
lansfordite	MgCO ₃ •5H ₂ O
hydromagnesite	Mg ₅ (CO ₃) ₄ (OH) ₂ •4H ₂ O
magnesite	MgCO ₃
dolomite	CaMg(CO ₃) ₂
huntite	CaMg ₃ (CO ₃) ₄

FINDING T-15: Hydrated Mg-carbonates are susceptible to volatile loss and recrystallization and transformation over timespans of months or longer, though this timescale may be modified by the degree of lithification and cementation. Investigations targeting hydrated carbonate minerals (either the volatiles they host or their bulk mineralogical properties) should be considered time sensitive upon opening the sample tube.

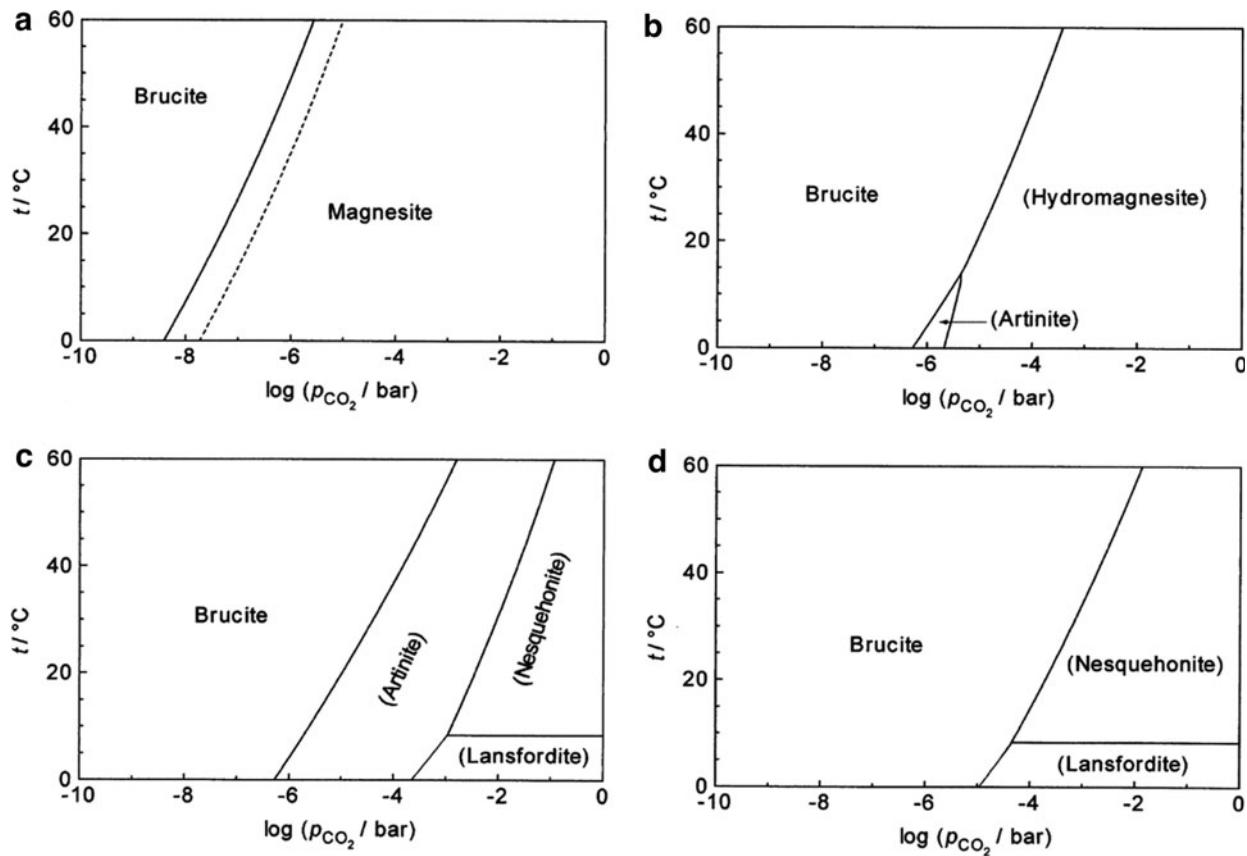


FIG. 16. Phase diagrams for the system MgO-CO₂-H₂O, illustrating thermodynamic drive for recrystallization of hydrous phases (from Koenigsberger *et al.*, 1999). (a) Stable equilibria of brucite with natural (solid line) and synthetic (dashed line) magnesite. (b) Magnesite was suppressed in the calculations. (c) Magnesite and hydromagnesite were suppressed in the calculations. (d) Magnesite, hydromagnesite and artinite were suppressed in the calculations.

An important caveat for time-sensitive aspects of mineral-volatile exchange (including all mineral groups that are known to exchange volatiles) lies in assessing the limits to which timescales can be successfully extrapolated from the literature to samples of the type expected to be returned from Mars. For instance, most of the literature sources identified that constrain the timescales of mineral-volatile exchange are based on experimental measurements that utilize single minerals or small numbers of minerals in simple mixtures and focus on powdered material at high surface area. As noted above, because volatile exchange in lithified geological (or cemented regolith) samples is likely to be governed by diffusion along grain boundaries and/or thin films of water, the time constant associated with volatile exchange is almost undoubtedly longer than implied by experiments focused on powders (which forms the literal basis for constructing Table 4 below). To that end, we strongly recommend further studies on physically and mineralogically analogous materials to quantify the associated timescales of volatile exchange more precisely among lithified materials.

MAJOR FINDING T-16: Current understanding of mineral-volatile exchange rates and processes is largely derived from monomineralic experiments and systems with high surface area; lithified sedimentary rocks (accounting for some, but not all, of the samples in the cache) will behave differently in this regard and are likely to be associated with longer time constants controlled in part by grain boundary diffusion. Although insufficient information is available to quantify this at the present time, the timescale of mineral-volatile exchange in lithified samples is likely to overlap with the sample processing and curation workflow (*i.e.*, 1-10 months; Table 4). This underscores the need to prioritize measurements targeting mineral-hosted volatiles within biocontainment.

4.4. Oxidation/reduction of redox-sensitive minerals

The principal process that jeopardizes investigations targeting redox-sensitive minerals involves the oxidation of

mineral-bound reduced compounds as a function of time. The rates and mechanisms of the Fe-oxidation are well understood in this context. In general, in the presence of thin films of H_2O (largely modulated by RH), oxidation of mineral-bound Fe(II) occurs by atmospheric $\text{O}_2(\text{g})$ (e.g., Stumm and Morgan, 1996), though recent investigations have quantified the oxidation rates of Fe(II) by other chemical oxidants such as oxychlorine species (Mitra and Catalano, 2019). It is important to note that, if reactive O-bearing species are identified in a sample contained within the SRF, their liberation in aqueous solution is likely to result in some rapid oxidation of redox sensitive minerals over a timescale of hours.

FINDING T-17: The liberation of reactive O-species through sample treatment or processing involving H_2O (e.g., rinsing, solvent extraction, particle size separation in aqueous solution, or other chemical extraction or preparation protocols) is likely to result in oxidation of some component of redox-sensitive materials in a matter of hours. The presence of reactive O-species should be examined before sample processing steps that seek to preserve or target redox-sensitive minerals. Electron paramagnetic resonance spectroscopy (EPR) is one example of an effective analytical method capable of detecting and characterizing the presence of reactive O-species.

Fe-oxidation by $\text{O}_2(\text{aq})$ is understood to display a first order kinetic dependence on the concentration or partial pressure of $\text{O}_2(\text{g})$, meaning that for every one-order of magnitude increase in $p\text{O}_2$, the oxidation rate increases by one order of magnitude (Singer and Stumm, 1970). This process also involves a second order dependence on pH such that one pH unit increase translates to a two order of magnitude increase in oxidation rate. However, the oxidation rate of redox sensitive mineral grains bound within a sedimentary or igneous matrix will be controlled by diffusion of $\text{O}_2(\text{aq})$ through the oxidation product. The timescales for this process can be evaluated by utilizing a “shrinking core model” whereby the diameter of the unreacted core of a redox-sensitive particle decreases with the extent of oxidation, which in turn results in a decrease in the interfacial area between the core and the coating (which then reduces the rate of delivery of the reactant) (Lasaga, 1998; Rimstidt, 2014). Assuming a spherical 100-micron redox-sensitive particle (of either pyrite or siderite) and a diffusion coefficient of $2.49 \times 10^{-10} \text{ m}^2/\text{sec}$ for O_2 , solutions can be obtained that estimate the volumetric fraction of a redox sensitive grain that may oxidize as a function of the O_2 content of the atmosphere (and assuming sufficiently high RH to support aqueous phase reactions). These simple relationships indicate that under ambient atmospheric conditions (i.e., $p\text{O}_2=0.21$ bar), 100-micron particles of siderite and pyrite would completely oxidize in ~ 35 days and 5 days, respectively (Figure 17). These simple calculations are broadly consistent with observations. For instance, complete oxidation of structural Fe(II) bound in clay minerals has been achieved in a matter of several hours to days in air-saturated solutions (Chemtob *et al.*, 2017; Neumann *et al.*, 2011).

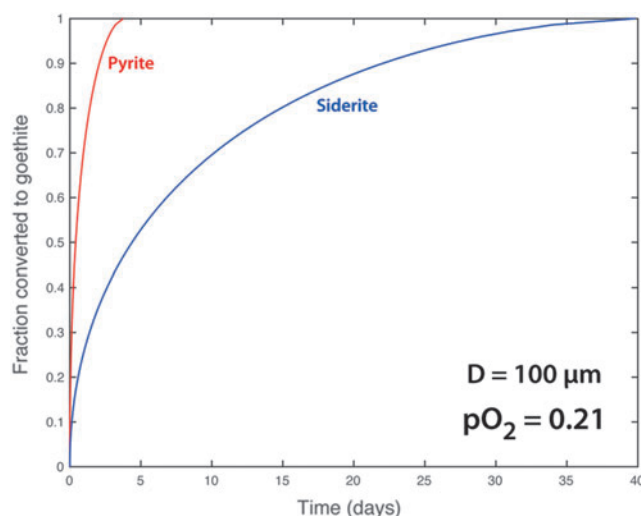


FIG. 17. Oxidative transformation (in volume fraction) of a 100-micron spherical particle of a redox-sensitive grain to goethite at ambient atmospheric oxygen concentrations.

However, if redox-sensitive materials are stored in an anaerobic chamber where the O_2 content of the atmosphere is very low, this timescale can be extended significantly. For instance, assuming commercially available O_2 -free nitrogen gas with an $\text{O}_2(\text{g})$ content of 1ppm, 2 vol. % of a 100-micron particle of pyrite would oxidize in ~ 3 months, which would oxidize ~ 0.6 vol. % of a similar-sized particle of siderite (Figure 18). Using high-purity gas that ensures O_2 content at 0.1 or even 0.01 ppm extends similar extents of oxidation out to the several year timescale. This in turn implies that as long as curation conditions involve ultra-pure low O_2 (well below 1ppm O_2 and preferably below 0.1 ppm) inert gas such as nitrogen, then sufficient oxidation should not occur during curation.

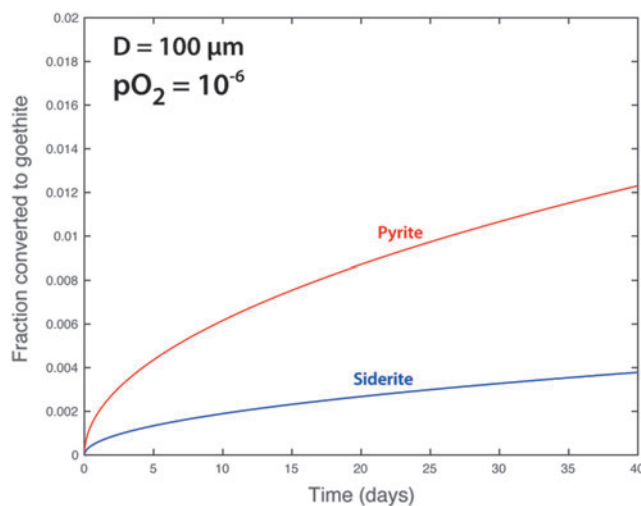


FIG. 18. Oxidative transformation (in volume fraction) of a 100-micron spherical particle of a redox-sensitive grain to goethite at an ambient oxygen concentration of 1ppm $\text{O}_2(\text{g})$.

FINDING T-18: Environments that maintain anoxia under inert gas containing $\ll 1$ ppm O_2 are likely to stabilize redox-sensitive minerals over timescales of several years.

5. Estimating the Loss of Scientific Information as a Function of Time: Implications for Sample Handling and Curation Workflow within an SRF

Available constraints on the characteristic timescales that underpin time-sensitivity range from relatively coarse to uncertain. Nevertheless, in all cases, sufficient information is available to begin to estimate how scientific information may be lost from attempting time-sensitive MSR investigations as a function of time spent in biocontainment. This, in turn, highlights important implications for sample processing within the SRF.

The loss of scientific information as a function of time can be estimated by first considering specific sample properties, minerals, solid phases, or compounds that the 26 time-sensitive iMOST investigation measurements target (Table 4). The available constraints that underpin time-sensitive processes during which a specific investigation target may degrade can then be used to evaluate the window of time available for scientific investigation. Here, time is divided into 0.5 order-of-magnitude increments from 1 to 10000 days. This partitioning establishes three windows of (A) 1-10 days, (B) 30-300 days (or \sim 1-10 months), and (C) 1000-10000 days (\sim 3-30 years). Investigations that target a material or property that degrades to the point where they are rendered scientifically uninformative within time window A (1-10 days) may be difficult, if not impossible, to plan and execute within that timeframe. Investigations that target a material or property that completely degrades within time window C are here deemed likely to preserve scientifically useful information even if they are delayed until after the SSAP is complete and investigations can be pursued outside biocontainment (*i.e.*, in the laboratories of individual principal investigators). Investigations that target a material or property that completely degrades within time window B may be accomplished within the sample handling / curation workflow inside an SRF if specific adjustments are made to accommodate them.

This analysis has identified three MSR targets that are likely to completely degrade within time window A. These are: clay mineral-bound H_2O , including adsorbed and interlayer H_2O , and hydrous sulfate and hydrous perchlorate minerals (for both hydrous minerals, the targets include the H_2O bound within their structures and on their surfaces as well as their bulk mineralogical properties). A fourth investigation target, cellular materials (cells/macromolecules of life on Earth), may also fall within this category. However, if these materials are in contact with reactive O-containing species and aqueous conditions, the exact timescale associated with degradation is dependent on the nature of information sought from molecular analysis, T, and the organic or cellular material under investigation.

Time window B features at least three MSR investigation targets that may completely degrade within 1-10 months, including mineral-bound volatile compounds, whether in

contact with an aqueous phase or reactive O-species; hydrous carbonate minerals, including the H_2O bound on surfaces or within their structures and bulk mineralogical properties themselves; and possibly organic or cellular material in contact with reactive O-containing species and aqueous conditions, which again is dependent on the nature of information sought from molecular analysis, temperature, and the material in question. All of the other MSR investigation targets considered here are completely degraded within time window C, which can likely await analysis outside biocontainment with minimal to moderate impact on the investigation, if the samples are deemed safe to release in an unsterilized state.

MAJOR FINDING T-19: MSR investigations targeting organic macromolecular or cellular material, mineral-bound volatile compounds, redox sensitive minerals, and/or hydrous carbonate minerals can become compromised at the timescale of weeks (after opening the sample tube), and scientific information may be completely lost within a time timescale of a few months. Because current considerations indicate that completion of SSAP, sample sterilization, and distribution to investigator laboratories cannot be completed in this time, these investigations must be completed within the sample receiving facility as soon as possible.

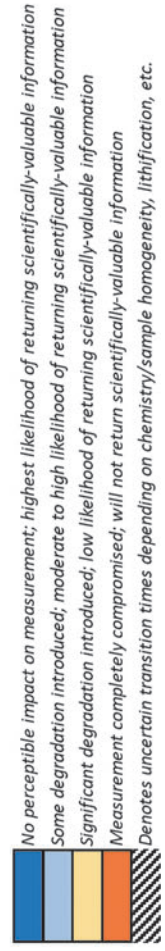
Finally, this analysis provides objective information on which to base prioritization decisions within an SRF. Because each investigation target supports multiple MSR investigations and iMOST objectives, prioritization decisions are most appropriately made on the basis of which targets degrade the most quickly within an SRF under curation conditions. To that end, analyses characterizing organic molecules, the volatile components and bulk mineralogical properties of hydrated sulfate and carbonate minerals, as well as interlayer or surface adsorbed H_2O in clay minerals, should be prioritized within an SRF and/or extended or mitigated where feasible.

6. Recommendations for SRF Sample Processing and Analytical Capabilities

The analysis of time-sensitive aspects of Mars returned sample science presented here highlights a number of sample processing and analytical considerations for maximizing the amount of scientific information retrieved from samples while in biocontainment. To that end, the Time-Sensitive Focus Group has considered, in detail, sample processing and analytical capabilities required to complete time-sensitive scientific investigations in biocontainment (*i.e.*, those highlighted in Table 4). This analysis recognizes that new capabilities are likely to emerge in the coming years and so provides examples of procedures and/or analytical equipment that could conceivably meet the goals of time-sensitive science at the present time. The recommendations that follow are based on the following principles: (1) the sample receiving facility should be constructed as a “minimalist” facility; duplication of analytical functionality should be avoided where possible; (2) if more than one

TABLE 4. ESTIMATION OF THE LOSS OF SCIENTIFIC INFORMATION AS A FUNCTION OF TIME FOR VARIOUS TARGETS (I.E., PROPERTIES, MATERIALS AND/OR SUBSTANCES) OF TIME-SENSITIVE MSR INVESTIGATIONS. IMOST MEASUREMENT NUMBERS REFER TO THE ORDER IN WHICH THESE APPEAR IN SUPPLEMENT-TABLE 1).

Investigations targeting...	Days Months Years	Time window A			Time window B			Time window C			Time-sensitive IMOST measurements affected
		1	3	10	30	100	300	1000	3000	10000	
Cells/macromolecules of life (desiccated sample, best case)		0.0	0.0	0.0	0.1	0.3	0.8	2.7	8	27	21,22
Cells/macromolecules of life (in contact with reactive-O/aqueous conditions, worst case)		0.0	0.0	0.0	0.1	0.3	0.8	2.7	8	27	21,22
Extracted sample headspace gas (major & minor components)		0.0	0.0	0.0	0.1	0.3	0.8	2.7	8	27	6,11,16,18,20
Extracted sample headspace gas (noble gases)		0.0	0.0	0.0	0.1	0.3	0.8	2.7	8	27	6,11,16,18,20
Extracted sample headspace gas (volatile hydrocarbons)		0.0	0.0	0.0	0.1	0.3	0.8	2.7	8	27	6,11,16,20,21,22
Mineral-bound volatile hydrocarbons (in contact with aqueous phase or high RH)		0.0	0.0	0.0	0.1	0.3	0.8	2.7	8	27	1,16,17,20,21,22
Mineral-bound volatile hydrocarbons (in contact with reactive O-species)		0.0	0.0	0.0	0.1	0.3	0.8	2.7	8	27	1,16,17,20,21,22
Clay minerals (bulk mineral properties not including interlayer spacing)		0.0	0.0	0.0	0.1	0.3	0.8	2.7	8	27	1-5,7-11,16,17,18,23
Clay mineral-bound H2O (adsorbed and interlayer H2O)		0.0	0.0	0.0	0.1	0.3	0.8	2.7	8	27	1-5,7-11,16,17,18,23-26
Hydrous carbonate minerals (at low RH; H2O and/or bulk mineral properties)		0.0	0.0	0.0	0.1	0.3	0.8	2.7	8	27	1-5,7-11,16,17,18,23-26
Hydrous carbonate minerals (at high RH; H2O and/or bulk mineral properties)		0.0	0.0	0.0	0.1	0.3	0.8	2.7	8	27	1-5,7-11,16,17,18,23-26
Hydrous sulfate minerals (H2O and/or bulk mineral properties)		0.0	0.0	0.0	0.1	0.3	0.8	2.7	8	27	1-5,7-12,14,16,17,18,23-26
Volcanic / impact glass and opaline SiO2		0.0	0.0	0.0	0.1	0.3	0.8	2.7	8	27	1-5,7-11,16,17,18,23-26
Poorly crystalline oxide minerals (H2O and/or bulk mineral properties)		0.0	0.0	0.0	0.1	0.3	0.8	2.7	8	27	1-5,7-11,16,17,18,23-26
Oxychlorine species (bulk concentrations / Cl,O isotopes)		0.0	0.0	0.0	0.1	0.3	0.8	2.7	8	27	1-5,7-11,13,16,17,18,23-26
Perchlorate minerals (H2O and/or bulk mineral properties)		0.0	0.0	0.0	0.1	0.3	0.8	2.7	8	27	1-5,7-11,13,16,17,18,23-26
Redox-sensitive mineralogy (at <<1 ppm O2; bulk chemical / mineralogical properties)		0.0	0.0	0.0	0.1	0.3	0.8	2.7	8	27	1-10



analytical capability is available to fully meet an analysis need, recommendations should favor simpler analytical procedures and equipment.

The investigation targets highlighted in **Table 4** lead to four overall goals of time-sensitive science (**Table 5**), which must be successfully completed in biocontainment (though in no specific order): (1) characterization of the sample tube headspace gas composition, (2) characterization of organic material of potential biological origin (including volatile hydrocarbons), (3) characterization of mineral-bound volatiles, (4) characterization of solid-phase volatile hosts. These goals encompass the investigation targets identified in Table 4 that significantly degrade within window B (*i.e.*, 1-10 months) or that may degrade within window B on the basis of estimated uncertainties due to sample lithification, cementation, etc. The goals also include characterization of the sample headspace gas which may not be inherently time-sensitive across window B but has been deemed so because results of these analyses inform the curation workflow (see also MSPG Science in Containment Report and Tait *et al.*, 2022).

Each of the four goals of time-sensitive science can be further subdivided into a series of analytical requirements (Table 5). These requirements, in turn, inform sample processing and analytical equipment that the SRF should contain. Characterization of various sample attributes (*i.e.*, organic material, mineral-bound volatiles, solid-phase volatile hosts, etc.) can be accomplished with a variety of analytical instrumentation and to varying degrees of specificity. For example, characterizing the specific solid phase hosting volatile compounds is an underlying requirement of Goal 4 in Table 5. However, while FT-IR spectroscopy provides information on hydration state and local bonding environment, it cannot not give unambiguous structural information. Conversely, while micro-X-ray diffraction provides structural information, in many instances it cannot unambiguously quantify the degree of hydration of some materials. Thus, both techniques provide important information that meet the stated analytical requirement. Accordingly, the Time Sensitive Focus Group has extensively discussed and agreed upon the minimum amount of data to credibly document sample characteristics and achieve each of the analytical requirements listed in Table 5. Because some instruments alone may be both necessary and sufficient to meet an analytical requirement, and others may contribute important information yet may not be sufficient to meet that requirement, this distinction has been made in Table 5. *In total, the collective recommended instrumentation listed in Table 5 represents the smallest minimum set required to credibly achieve each analytical requirement.* In other words, if instrumentation that supports a given analytical requirement were removed from consideration but not substituted with a suitable technique, the remaining analytical data do not meet the stated requirement.

Below, recommendations for sample processing and analytical capabilities are presented for each goal in the context of the processes discussed above that underpin time-sensitivity.

6.1. Goal 1: Characterize sample tube headspace gas composition

To meet this goal, the time-sensitive focus group recommends the following:

- Independent sampling of martian atmospheric gas should be prioritized to quantify volatile exchange history within the sample tubes, provide a reference composition to compare with headspace gases, aid in the detection of biosignatures, and permit enough material to support iMOST investigations.
- All sample tubes should be placed in a secondary container as soon as possible. The headspace of this secondary container should be subject to periodic compositional or isotopic monitoring of gaseous species that may have escaped the sample tube if a seal has been breached. This recommendation can be achieved, for example, by placement within a Sample Tube Isolation Chamber (STIC), as discussed by Tait *et al.* (2022).
- The headspace gas present in a sample tube selected for analysis should be retrieved and characterized compositionally and isotopically as soon as possible. The main objectives of these analyses will be to assess whether sample headspace gas has been contaminated by terrestrial atmosphere and characterize rapidly the sample headspace gas before further mineral-volatile exchange occurs. Time-sensitive analyses targeting sample headspace gases should aim to characterize, in a non-destructive way, the elemental composition of the gas and stable isotopic composition of key major elements (*e.g.*, carbon, nitrogen, hydrogen) and individual volatile species if they are sufficiently abundant.
- Once the state of the sample tube seals has been determined, sample headspace gas should be retrieved. The retrieval process should recover all available gas originally contained within one individual sample tube volume stored in a respective container each that allows future allocation. The remaining headspace should be back-filled with an inert curation-grade gas. Small aliquots of the gas should be used to assess contamination by terrestrial atmosphere, and the remaining larger aliquots may be sterilized (see Velbel *et al.*, 2022) and sealed in preparation for continued analysis outside biocontainment.
- Because mineral-bound volatiles will be subject to degassing when the seal is breached, the sample tube headspace extraction procedure should facilitate multiple attempts at extracting headspace gas. This will minimize the escape of mineral-bound volatiles to the headspace and facilitate their characterization.
- The extraction and handling of sample headspace gas will involve specialized equipment including custom-made gas transfer tubes constructed of suitable material, vacuum pumps, inert carrier gas (*i.e.*, He) and/or cold traps to concentrate and transfer gaseous species.

The composition of major and minor gaseous species present in relatively small amounts of sample headspace gas could be achieved by using gas chromatography-isotope ratio mass spectrometry (GC-IRMS). In addition, GC-IRMS can provide stable isotopic composition of C and N in the gas phase at the expected quantities. However, in addition to this, spectroscopic methods such as cavity ringdown spectroscopy (CRDS) can provide higher precision measurements of C-isotopes and characterization of CO₂ isotopologues and triple oxygen systematics, which are all important tracers of

TABLE 5. TRACEABILITY MATRIX OUTLINING GOALS OF TIME-SENSITIVE SCIENCE TO BE COMPLETED IN BIOCONTAINMENT AND INSTRUMENTATION REQUIRED TO MEET EACH GOAL.

Time-Sensitive (Tosca et al., 2021)	Goal 1. Characterize sample tube headspace gas composition			Goal 2. Characterize macromolecular material of potential biological origin (including volatile hydrocarbons)				Goal 3. Characterize mineral-bound volatiles			Goal 4. Characterize solid-phase volatile hosts			
	Extraction and handling of sample headspace gas	Concentration of major and minor gaseous species	Isotopic composition of major and minor gaseous species	High resolution <i>in situ</i> chemical imaging	Stable isotopic ratios or gases in mixtures	Extraction and identification of organic molecules and polymers	Analysis and characterization of nucleic acids, proteins, lipids and metabolites	Detection / characterization of reactive O species	Chemical and isotopic composition of mineral bound volatiles	Volatile release in aqueous solution / chemical reactivity	Quantitative <i>in situ</i> chemistry of volatile bearing phases	Structure, degree of disorder or volatile bearing phases	Detection / monitoring of structural water	Characterization / monitoring of ripening reactions
Gas extraction & handling equipment (e.g., vacuum lines, carrier gas)	xx													
GC-IRMS		xx	xx		xx									
Cavity ringdown spectroscopy or tunable laser spectroscopy*		xx	xx		x									
Confocal Raman microscopy (with UV fluorescence)				xx							x			
UHPLC-MS/MS						xx								
MALDI-TOF-MS							xx							
ESI-MS							xx							
DNA sequencer							xx							
Electron paramagnetic resonance spectroscopy (EPR)								xx						
Temperature conversion/elemental analysis-IRMS (TC/EA-IRMS)									xx					
ICP-OES										xx				
Ion chromatography										xx				
Field emission SEM-EDS										xx				
Raman spectroscopy (also required for confocal Raman microscopy)											xx			
FT-IR spectroscopy												x		
Micro-X-ray diffraction												x		
Total scattering / pair distribution function analysis												xx		
BET surface area analysis												xx		

*exact instrumentation required to be confirmed by future Focus Group; x contributing / important contribution; xx necessary examination / essential / indispensable

atmospheric evolution. Here, either analytical capability could be recommended to facilitate complete chemical and isotopic characterization of sample headspace gas, and a final decision on the suitability of a particular method for low volume and molar quantities expected for returned samples must await further technique development.

6.2. Goal 2: Characterize organic material of potential biological origin (including volatile hydrocarbons)

To meet this goal, the time-sensitive focus group recommends the following:

- Prior to analysis, and during sample handling and preparation, exposure of samples to aqueous conditions and/or oxidants should be minimized.
- If early analysis suggests the potential for biology, samples should be preserved in such a way as to prevent further deterioration. This should include sealing a small aliquot of the sample core in a hermetically sealed container stored at low temperature (*i.e.*, <-20°C).
- If volatile hydrocarbons and/or reactive O-containing species are detected above background levels, a portion of the remaining sample core should be hermetically sealed and stored at -20°C or lower to prevent additional volatile loss and chemical reactions at room temperature.
- Time-sensitive analyses targeting trace volatile species present in the sample tube headspace gas should be performed using non-destructive techniques. In addition, non-destructive measurements of reactive O-containing species of the solid sample should be performed prior to exposure of the samples to solvents or elevated temperatures and humidity.
- Time-sensitive analyses targeting molecular / genetic material should include instrumentation that permits (1) high resolution *in situ* chemical imaging to distinguish organic material from inorganic material, (2) the determination of stable isotope ratios of elements such as C, H, and N in complex mixtures of organic material, (3) the extraction and identification of organic molecules and polymers, and (4) analysis and characterization of nucleic acids, proteins, lipids, and metabolites.

Instruments that (in some combination) fulfill these requirements include, for example, confocal laser scanning microscopy equipped with Raman and UV fluorescence analysis, as well as gas chromatography isotope ratio mass spectrometry (GC-IRMS), ultra-high performance liquid chromatography tandem mass spectrometry (UHPLC-MS/MS), electrospray ionization mass spectrometry (ESI-MS), and matrix assisted laser desorption ionization-time of flight mass spectrometry (MALDI-TOF-MS) of samples/extracts suspected of containing biological material. In addition, a DNA sequencer is required to fully characterize the genetic sequence of nucleic acids.

6.3. Goal 3: Characterize mineral-bound volatiles

To meet this goal, the time-sensitive focus group recommends the following:

- Time-sensitive analyses targeting hydrous sulfate minerals, poorly crystalline or X-ray amorphous materials, clay minerals, and hydrous carbonate minerals

should aim to characterize, in detail, the structure and chemistry of the materials, which in many cases may change over time as volatiles are exchanged with ambient surroundings (see Table 4 and Section 4.3).

Suitable analytical capabilities include a combination of powder X-ray diffraction, total X-ray scattering and pair distribution function analysis (which is now possible with commercial lab-based XRD instruments provided a high energy X-ray source and suitable detector are used), Fourier transform infrared and Raman spectroscopy, field emission scanning electron microscopy with energy dispersive X-ray spectroscopy, and BET surface area analysis, which should be utilized to monitor the evolution of poorly crystalline or X-ray amorphous materials in response to ripening/recrystallization reactions.

6.4. Goal 4: Characterize solid-phase volatile hosts

To meet this goal, the time-sensitive focus group recommends the following:

- Time-sensitive analyses that target mineral-bound volatiles should characterize the concentration, speciation, and isotopic composition of volatiles in question (*i.e.*, H₂O, SO₂, CO₂, etc.).

Suitable analytical capabilities include temperature conversion/elemental analysis-isotope ratio mass spectrometry, a technique that utilizes combustion and isotope ratio mass spectrometry to determine the stable isotopic compositions of components in bulk samples. Although other analytical techniques have been developed that target volatiles hosted in specific minerals (such as coupled thermogravimetry/differential scanning calorimetry and evolved gas analysis via cavity ringdown spectroscopy), these techniques are prone to ambiguity with complex mineral mixtures of more than one or two phases, which together may release multiple components that may react at high temperature and alter the isotopic composition of the evolved gas phase (*e.g.*, Ming *et al.*, 2014). For these reasons, bulk methods such as thermal combustion elemental analysis-isotope ratio mass spectrometry (TC/EA-IRMS) are recommended here, although samples may be subject to physical processing (*i.e.*, particle size separation) to prepare and/or concentrate mineral separates before analysis.

- Time-sensitive analytical instruments that target the identity and speciation of volatiles adsorbed on mineral surfaces (*e.g.*, electron paramagnetic resonance spectroscopy, EPR); should be used along with instruments capable of analyzing the chemical reactivity of materials in aqueous solution (an investigation supporting iMOST Objective 7; Table 1). Methods such as ICP-OES and ion chromatography should be utilized to permit analysis of major and trace cation and anion chemistry, respectively.

7. Recommendations for Future Work

As highlighted in Section 5, some degree of uncertainty surrounds the exact timescales over which time-sensitive processes may influence the scientific utility of specific investigations. Table 4 highlights uncertainty in two main areas: the timescales over which organic material may

degrade under various conditions, and the timescales over which volatile-bearing solid phases may exchange with ambient atmospheric conditions. Regarding the former, it is currently not possible to anticipate *a priori* how rapidly organic material, if detected, may degrade, which is in part a function of chemistry, sample homogeneity, and several other factors. Regarding the latter process of mineral-volatile exchange, it is important to note that currently available studies of the timescales of mineral-volatile exchange are mainly limited to single phase or simple mineral mixtures that utilize laboratory studies of finely powdered, high surface area (and therefore high reactivity) samples. Minerals bound in lithified or otherwise cemented materials are expected to exchange volatiles more slowly as the timescale is likely limited by sample porosity/permeability and grain boundary diffusion. To that end, future work should prioritize constraining the timescales over which analogous samples (*e.g.*, cores of lithified sedimentary rocks) exchange volatiles with ambient surroundings. This should involve, for example, monitoring chemical/mineralogical changes on analog cores.

A final consideration for estimating the loss of scientific information as a function of time involves the degree to which the degradation timescales of a specific investigation target can be extended through mitigation strategies or special storage conditions. For instance, studies of mineral-volatile exchange among hydrous sulfate minerals, hydrous carbonate minerals, and clay minerals have all shown that the rates of exchange depend strongly on RH (Section 4.3). In fact, many studies have shown that storage of a specific mineral within a RH buffered environment (*i.e.*, achievable with a sealed vessel containing a saturated salt solution of a known water activity and T) can greatly extend the window of time over which volatile transfer (*e.g.*, Jerz and Rimstidt, 2003; Chou *et al.*, 2013) and complex interactions between hydrous minerals (*e.g.*, Wilson and Bish, 2012) might occur. Similarly, freezing or vacuum sealing within impermeable materials have each been noted to stabilize or mitigate volatile loss and irreversible mineral transformations among hydrous minerals (*e.g.*, Konrad *et al.*, 2016). Investigation targets for which supporting literature indicates that extension of the timescale might be possible through a mitigation or storage strategy are indicated in Table 4.

Acknowledgments

We would like to thank the entire MSPG-2 committee for their input and discussions during our bi-weekly meetings, especially Kim Tait and Michael Velbel and for their input on this document. We are grateful for the generous input from subject matter experts Paul Niles (NASA-JSC) and Matthew Brady (University of Cambridge) on evolved gas analysis of volatile-bearing minerals, and to Lisa Mayhew, Karim Benzerara, and Ralph Milliken for comments and feedback which improved the clarity of the report.

The decision to implement Mars Sample Return will not be finalized until NASA's completion of the National Environmental Policy Act (NEPA) process. This document is being made available for planning and information purposes only.

Disclosure Statement

No competing interests.

Funding Information

A portion of this work was funded by the National Aeronautics and Space Administration (NASA) and the European Space Agency (ESA).

A portion of this work was carried out at the Jet Propulsion Laboratory, California Institute of Technology, under a contract with the National Aeronautics and Space Administration (80NM0018D0004).

This work has partly (H. B.) been carried out within the framework of the NCCR PlanetS supported by the Swiss National Science Foundation. M.A.V.'s participation in MSPG2 was supported in part by a sabbatical leave-of-absence from Michigan State University. M.-P.Z. was supported by projects PID2019-104205GB-C21 of Ministry of Science and Innovation and MDM-2017-0737 Unidad de Excelencia 'Maria de Maeztu' Centro de Astrobiología (CSIC-INTA) (Spain).

References

- Allen CC, Allton J, Lofgren G, *et al.* (2011) Curating NASA's extraterrestrial samples Past, present, and future. *Chemie der Erde Geochemistry* 71:1 20.
- Allentoft ME, Collins M, Harker D, *et al.* (2012) The half life of DNA in bone: measuring decay kinetics in 158 dated fossils. *Proc of the Royal Society B: Biological Sciences* 279: 4724 4733.
- Banfield JF and Zhang H (2001) Nanoparticles in the Environment. *Reviews in Mineralogy and Geochemistry* 44:1 58.
- Beatty DW, Grady MM, McSween HY, *et al.* (2019) The potential science and engineering value of samples delivered to Earth by Mars sample return: International MSR Objectives and Samples Team (iMOST). *Meteorit Planet Sci* 54:S3 S152.
- Bish DL, Carey JW, Vaniman DT, *et al.* (2003) Stability of hydrous mineral on the martian surface. *Icarus* 164:96 103.
- Blamey NJF, Parnell J, McMahon S, *et al.* (2015) Evidence for methane in martian meteorites. *Nature Comm* 6, doi.org/10.1038/ncomms8399.
- Bogard DD, Clayton RN, Marti K, *et al.* (2001) Martian volatiles: Isotopic composition, origin, and evolution. *Space Sci Rev* 96:425 458.
- Brinton KLF and Bada JL (1996) A reexamination of amino acids in lunar soils: Implications for the survival of exogenous organic material during impact delivery. *Geochim et Cosmochim Acta* 60:349 354.
- Carrier BL and Kounaves SP (2015) The origins of perchlorate in the martian soil. *Geophys Res Lett* 42:3739 3745.
- Chemtob SM, Nickerson RD, Morris RV, *et al.* (2017) Oxidative alteration of ferrous smectites and implications for the redox evolution of early Mars. *J Geophys Res Planets* 122: 2469 2488.
- Chou IM, Seal RR and Wang A (2013) The stability of sulfate and hydrated sulfate minerals near ambient conditions and their significance in environmental and planetary sciences. *Journal of Asian Earth Sciences* 62:734 758.
- Christensen PR, Wyatt MB, Glotch TD, *et al.* (2004) Mineralogy at Meridiani Planum from the Mini TES Experiment on the Opportunity Rover. *Science* 306:1733 1739.
- Clancy RT, Sandor BJ and Moriarty Schieven GH (2004) A measurement of the 362 GHz absorption line of Mars atmospheric H₂O₂. *Icarus* 168:116 121.

- Cockell CS, Chitale R, Clement B, *et al.* (2022) Orbiting Sample Tiger Team (OSTT) Recommendation on orbiting sample cleanliness. *Astrobiology* 22(S1):S 238 S 241.
- Conrad PG, Malespin CA, Franz HB, *et al.* (2016) *In situ* measurement of atmospheric krypton and xenon on Mars with Mars Science Laboratory. *Earth Planet Sci Lett* 454:1 9.
- Cornell RM and Schwertmann U (2003) *The Iron Oxides: Structure, Properties, Reactions, Occurrences and Uses*. 2nd ed. Weinheim: Wiley VCH GmbH & Co. KGaA.
- Costa MM, Jensen NK, Bouvier LC, *et al.* (2020) The internal structure and geodynamics of Mars inferred from a 4.2 Gyr zircon record. *Proc Natl Acad Sci* 117:30973 30979.
- Davies PJ and Bubela B (1973) The transformation of nesquehonite into hydromagnesite. *Chem Geol* 12:289 300.
- Dean RT, Fu S, Stocker R, *et al.* (1996) Biochemistry and pathology of radical mediated protein oxidation. *Biochem Journ* 15:1 18.
- Duffy CJ (1993) *Kinetics of Silica Phase Transitions*. Los Alamos, NM. Available online at <https://doi.org/10.2172/138671>.
- Ehlmann BL and Edwards CS (2014) Mineralogy of the martian surface. *Ann Rev Earth Planet Sci* 42:291 315.
- Eigenbrode JL, Summons RE, Steele A, *et al.* (2018) Organic matter preserved in 3 billion year old mudstones at Gale crater, Mars. *Science* 360:1096 1101.
- El Shenawy MI, Niles PB, Ming DW, *et al.* (2020) Oxygen and carbon stable isotope composition of the weathering Mg carbonates formed on the surface of the LEW 85320 ordinary chondrite: Revisited. *Meteorit Planet Sci* 55:1884 1898.
- Elprince A, Saffan M and Zabidi M (2015) Observed predicted shifts in thermodynamic functions of water adsorption by smectite at nanoscale. *Soil Science Society of America Journal* 79:1319 1328.
- Elsila JE, Glavin DP and Dworkin JP (2009) Cometary glycine detected in samples returned by Stardust. *Meteorit Planet Sci* 44:1323 1330.
- Elsila JE, Callahan MP, Dworkin JP, *et al.* (2016) The origin of amino acids in lunar regolith samples. *Geochim et Cosmochim Acta* 172:357 369.
- Emerson WW (1962) The swelling of Ca montmorillonite due to water absorption: I. Water uptake in the vapour phase. *J Soil Sci* 13:31 39.
- Encrenaz T, Bézard B, Greathouse TK, *et al.* (2004) Hydrogen peroxide on Mars: Evidence for spatial and seasonal variations. *Icarus* 170:424 429.
- Epstein S and Taylor HP Jr (1973) The isotopic composition and concentration of water, hydrogen, and carbon in some Apollo 15 and 16 soils and in the Apollo 17 orange soil [abstract 1559]. In *34th Lunar and Planetary Science Conference*, Lunar and Planetary Institute, Houston.
- Farley KA, Williford KH, Stack KM, *et al.* (2020) Mars 2020 Mission overview. *Space Sci Rev* 216:142 142.
- Ferrage E, Lanson B, Sakharov BA, *et al.* (2005) Investigation of smectite hydration properties by modeling experimental X ray diffraction patterns: Part I. Montmorillonite hydration properties. *Am Min* 90:1358 1374.
- Fox SW, Harada K and Hare PE (1976) Amino acid precursors in lunar fines Limits to contribution of jet exhaust. *Geochim et Cosmochim Acta* 40:1069 1071.
- Freissinet C, Glavin DP, Mahaffy PR, *et al.* (2015) Organic molecules in the Sheepbed Mudstone, Gale Crater, Mars. *J Geophys Res Planets* 120:495 514.
- Friedman I and Long W (1984) Volcanic glasses, their origins and alteration processes. *Journal of Non Crystalline Solids* 67:127 133.
- Gates KS (2009) An overview of chemical processes that damage cellular DNA: Spontaneous hydrolysis, alkylation, and reactions with radicals. *Chem Res Toxicol* 22:1747 1760.
- Gibson EK and Moore GW (1973) Volatile rich lunar soil: Evidence of possible cometary impact. *Science* 179, doi: 10.1126/science.179.4068.69.
- Glavin DP, Dworkin JP and Sandford SA (2008) Detection of cometary amines in samples returned by Stardust. *Meteorit Planet Sci* 43:399 413.
- Glavin DP, Freissinet C, Miller KE, *et al.* (2013) Evidence for perchlorates and the origin of chlorinated hydrocarbons detected by SAM at the Rocknest aeolian deposit in Gale Crater. *J Geophys Res Planets* 118:1955 1973.
- Gough RV, Chevrier VF, Baustian KJ, *et al.* (2011) Laboratory studies of perchlorate phase transitions: Support for meta stable aqueous perchlorate solutions on Mars. *Earth Planet Sci Lett* 312:371 377.
- Grotzinger JP, Gupta S, Malin MC, *et al.* (2015) Deposition, exhumation, and paleoclimate of an ancient lake deposit, Gale Crater, Mars. *Science* 350.
- Harrison AL, Dipple GM, Power IM, *et al.* (2016) The impact of evolving mineral water gas interfacial areas on mineral fluid reaction rates in unsaturated porous media. *Chem Geol* 421:65 80.
- Heaney PJ, Oxman, MJ and Chen SA (2020) A structural study of size dependent lattice variation: *In situ* X Ray diffraction of the growth of goethite Nanoparticles from 2 Line ferrihydrite. *Am Min* 105:652 663.
- Hecht MH, Kounaves SP, Quinn RC, *et al.* (2009) Detection of perchlorate and the soluble chemistry of martian soil at the phoenix lander site. *Science* 325:64 67.
- Hiemstra T, Mendez JC and Li J (2019) Evolution of the reactive surface area of ferrihydrite: Time, pH, and temperature dependency of growth by Ostwald ripening. *Environmental Science: Nano* 6:820 833.
- Hochella MF, Lower SK, Maurice PA, *et al.* (2008) Nano minerals, mineral nanoparticles, and Earth systems. *Science* 319:1631.
- Holland PT, Simoneit BR, Wszolek PC, *et al.* (1972) Compounds of carbon and other volatile elements in Apollo 14 and 15 samples. In *Proceedings of Lunar Science Conference* 3, 2131 2147.
- Hopkinson L, Rutt K and Cressey G (2008) The transformation of nesquehonite to hydromagnesite in the system CaO MgO H₂O CO₂: An experimental spectroscopic study. *Journal of Geology* 116:387 400.
- Hurowitz JA, Grotzinger JP, Fischer WW, *et al.* (2017) Redox stratification of an ancient lake in Gale Crater, Mars. *Science* 356.
- Imlay JA, Chin SM and Linn S (1988) Toxic DNA damage by hydrogen peroxide through the Fenton reaction *in vivo* and *in vitro*. *Science* 240, doi:10.1126/science.2834821.
- Jertz JK and Rimstidt JD (2003) Efflorescent iron sulfate minerals: Paragenesis, relative stability, and environmental impact. *Am Min* 88:1919 1932.
- Johnson WA and Mehl KE (1939) Reaction kinetics in processes of nucleation and growth. *Transactions of the American Institute of Mining, Metallurgical and Petroleum Engineers* 195:416.

- Jull AJT, Cheng S, Gooding JL, *et al.* (1988) Rapid growth of magnesium carbonate weathering products in a stony meteorite from Antarctica. *Science* 242:417-419.
- Kim JR, Yoon HW, Kwon KS, *et al.* (2000) Identification of proteins containing cysteine residues that are sensitive to oxidation by hydrogen peroxide at neutral pH. *Analytical biochemistry* 283:214-221.
- Königsberger E, Königsberger LC and Gamsjäger H (1999) Low temperature thermodynamic model for the system Na₂CO₃-MgCO₃-CaCO₃-H₂O. *Geochim et Cosmochim Acta* 63:3105-3119.
- Konrad F, Gallien F, Gerard DE, *et al.* (2016) Transformation of amorphous calcium carbonate in air. *Crystal Growth & Design* 16:6310-6317.
- Korcek S, Chenier JHB, Howard JA, *et al.* (1972) Absolute rate constants for hydrocarbon autoxidation. XXI. Activation energies for propagation and the correlation of propagation rate constants with carbon-hydrogen bond strengths. *Canadian Journal of Chemistry* 50:2285-2297.
- Kounaves SP, Carrier BL, O'Neil GD, *et al.* (2014) Evidence of martian perchlorate, chlorate, and nitrate in Mars meteorite EETA79001: Implications for oxidants and organics. *Icarus* 229:206-213.
- Lasaga AC (1998) *Kinetic Theory in the Earth Sciences*. Princeton University Press.
- Lasne J, Noblet A, Szopa C, *et al.* (2016) Oxidants at the surface of Mars: A review in light of recent exploration results. *Astrobiology* 16:977-996.
- Levin GV and Straat PA (1976) Viking labeled release biology experiment: Interim results. *Science* 194:1322-9.
- Levin GV and Straat PA (1977) Recent results from the Viking Labeled Release Experiment on Mars. *J Geophys Res* (1896-1977) 82:4663-4667.
- Levin GV and Straat PA (1979) Completion of the Viking labeled release experiment on Mars. *Journal of Molecular Evolution* 14:167-183.
- Likos WJ and Lu N (2002) Water vapor sorption behavior of smectite-kaolinite mixtures. *Clays and Clay Minerals* 50:553-561.
- Linley E, Denyer SP, McDonnell G, *et al.* (2012) Use of hydrogen peroxide as a biocide: new consideration of its mechanisms of biocidal action. *Journ Antimicrob Chemother* 67:1589-1596.
- Marshall RR (1961) Devitrification of natural glass. *Bulletin of the Geological Society of America* 72:1493-1520.
- McCubbin FM, Herd CDK, Yada T, *et al.* (2019) Advanced curation of astromaterials for planetary science. *Space Sci Rev* 215:48-48.
- McHale JM, Auroux A, Perrotta AJ, *et al.* (1997) Surface energies and thermodynamic phase stability in nanocrystalline aluminas. *Science* 277:788-791.
- McLennan SM, Grotzinger JP, Hurwitz JA, *et al.* (2019) The sedimentary cycle on early Mars. *Ann Rev Earth Planet Sci* 47:91-118.
- McSween Jr HY (1994) What we have learned about Mars from SNC meteorites. *Meteoritics* 29:757-779.
- MEPAG (2015) Mars Scientific Goals, Objectives, Investigations, and Priorities: 2015. V Hamilton, Ed. White paper available online at <http://mepag.nasa.gov/reports.cfm>.
- Millan M, Pozarycki C, McAdam A, *et al.* (2020) Optimization of the Sample Analysis at Mars wet chemistry experiment for the detection of organics in Glen Torridon [abstract 1897]. In *51st Lunar and Planetary Science Conference*, Lunar and Planetary Institute, Houston.
- Ming DW and Franklin WT (1985) Synthesis and characterization of lansfordite and nesquehonite. *Soil Science Society of America Journal* 49:1303-1308.
- Ming DW, Archer PD, Glavin DP, *et al.* (2014) Volatile and organic compositions of sedimentary rocks in Yellowknife Bay, Gale Crater, Mars. *Science* 343:1245-1267.
- Mitra K and Catalano JG (2019) Chlorate as a potential oxidant on Mars: Rates and products of dissolved Fe(II) oxidation. *J Geophys Res Planets* 124:2893-2916.
- Morgan B, Wilson SA, Madsen IC, *et al.* (2015) Increased thermal stability of nesquehonite (MgCO₃·3H₂O) in the presence of humidity and CO₂: Implications for low temperature CO₂ storage. *International Journal of Greenhouse Gas Control* 39:366-376.
- MSPG (MSR Science Planning Group: co chairs M Meyer and E Sefton Nash) (2019) The Relationship of MSR Science and Containment. Unpublished workshop report available online at [https://mepag.jpl.nasa.gov/reports/Science in Containment Report Final.pdf](https://mepag.jpl.nasa.gov/reports/Science%20in%20Containment%20Report%20Final.pdf).
- National Research Council (2011) *Visions & Voyages for Planetary Science in the Decade 2013-2022*. Washington, D.C., National Academies Press.
- Navrotsky A (2007) Calorimetry of nanoparticles, surfaces, interfaces, thin films, and multilayers. *Journal of Chemical Thermodynamics* 39:1-9.
- Navrotsky A, Mazeina L and Majzlan J (2008) Size driven structural and thermodynamic complexity in iron oxides. *Science* 319:1635-39.
- Neumann A, Sander M and Hofstetter TB (2011) Redox properties of structural Fe in smectite clay minerals. *ACS Symposium Series* 1071:361-379.
- Ojha L, Karunatillake S, Karimi S, *et al.* (2021) Amagmatic hydrothermal systems on Mars from radiogenic heat. *Nature Communications* 12:1754.
- Okhrimenko L, Favergeon L, Johannes K, *et al.* (2017) Thermodynamic study of MgSO₄·H₂O system dehydration at low pressure in view of heat storage. *Thermochimica Acta* 656:135-143.
- Okhrimenko L, Favergeon L, Johannes K, *et al.* (2020) New kinetic model of the dehydration reaction of magnesium sulfate hexahydrate: Application for heat storage. *Thermochimica Acta* 687:1785-69.
- Ott U (1988) Noble gases in SNC meteorites: Shergotty, Nakhla, Chassigny. *Geochim et Cosmochim Acta* 52:1937-1948.
- Oyama VI, Berdahl BJ and Carle GC (1977) Preliminary findings of the Viking gas exchange experiment and a model for martian surface chemistry. *Nature* 265:110-114.
- Power IM, Harrison AL, Dipple GM, *et al.* (2019) Magnesite formation in playa environments near Atlin, British Columbia, Canada. *Geochim et Cosmochim Acta* 255:1-24.
- Quinn RC, Martucci HFH, Miller SR, *et al.* (2013) Perchlorate radiolysis on Mars and the origin of martian soil reactivity. *Astrobiology* 13:515-520.
- Radzicka A and Wolfenden R (1996) Rates of uncatalyzed peptide bond hydrolysis in neutral solution and the transition state affinities of proteases. *Journ Am Chem Soc* 118:6105-6109.
- Rampe EB, Blake DF, Bristow TF, *et al.* (2020) Mineralogy and geochemistry of sedimentary rocks and eolian sediments in Gale Crater, Mars: A review after six Earth years of exploration with Curiosity. *Geochemistry* 80:1256-05.
- Rampe EB, Morris RV, Ruff SW, *et al.* (2014) Amorphous phases on the surface of Mars [abstract 1239]. In *Eighth International Conference on Mars*, Pasadena, CA.

- Rébiscoul D, Cambedouzou J, Matar Briman, I, *et al.* (2015) Water dynamics in nanoporous alteration layer coming from glass alteration: An experimental approach. *J Phys Chem C* 119:15982–15993.
- Rimstidt JD (2014) *Geochemical Rate Models: An Introduction to Geochemical Kinetics*, Cambridge University Press.
- Ritterbach L and Becker P (2020) Temperature and humidity dependent formation of $\text{CaSO}_4 \cdot x\text{H}_2\text{O}$ ($x=0\dots2$) phases. *Global and Planetary Change* 187:103132.
- Robertson K and Bish D (2011) Stability of phases in the $\text{Mg}(\text{ClO}_4)_2 \cdot n\text{H}_2\text{O}$ system and implications for perchlorate occurrences on Mars. *J Geophys Res Planets* 116:19912012.
- Salvatore MR, Goudge TA, Bramble MS, *et al.* (2018) Bulk mineralogy of the NE Syrtis and Jezero Crater regions of Mars derived through thermal infrared spectral analyses. *Icarus* 301:76–96.
- Scheller EL, Ehlmann BL, Hu R, *et al.* (2021) Long term drying of Mars by sequestration of ocean scale volumes of water in the crust. *Science* 372:56–62.
- Schoonheydt RA and Johnston CT (2006) Surface and Interface Chemistry of Clay Minerals. In *Developments in Clay Science* 1:87–113.
- Schwertmann U and Rochelle MC (2000) *Iron Oxides in the Laboratory: Preparation and Characterization*. 2nd ed. Wiley VCH Verlag GmbH.
- Singer RB (1985) Spectroscopic observation of Mars. *Advances in Space Research* 5:59–68.
- Singer PC and Stumm W (1970) Acid mine drainage The rate determining step. *Science* 167:1121–1123.
- Smith RM and Hansen DE (1998) The pH rate profile for the hydrolysis of a peptide bond. *Journ Am Chem Soc* 120:8910–8913.
- Smith RJ, Rampe EB, Horgan BHN, *et al.* (2018) Deriving amorphous component abundance and composition of rocks and sediments on Earth and Mars. *J Geophys Res Planets* 123:2485–2505.
- Sposito G and Prost R (1982) Structure of water adsorbed on smectites. *Chemical Reviews* 82:553–573
- Squyres SW, Grotzinger JP, Arvidson RE, *et al.* (2004) *In situ* evidence for an ancient aqueous environment at Meridiani Planum, Mars. *Science* 306:1709–14.
- Stern JC, Sutter B, Jackson WA, *et al.* (2017) The nitrate/(per)chlorate relationship on Mars. *Geophys Res Lett* 44:2643–2651.
- Stumm W and Morgan J (1996) *Aquatic Chemistry: Chemical Equilibria and Rates in Natural Waters*, Wiley.
- Sutter B, McAdam AC, Mahaffy PR, *et al.* (2017) Evolved gas analyses of sedimentary rocks and eolian sediment in Gale Crater, Mars: Results of the Curiosity rover's sample analysis at Mars instrument from Yellowknife Bay to the Namib Dune. *J Geophys Res Planets* 122:2574–2609.
- Swindle TD, Atreya S, Busemann H, *et al.* (2022) Scientific value of including an atmospheric sample as part of Mars Sample Return (MSR). *Astrobiology* 22(S1):S 165–S 175.
- Szopa C, Freissinet C, Glavin DP, *et al.* (2019) First detections of dichlorobenzene isomers and trichloromethylpropane from organic matter indigenous to Mars mudstone in Gale Crater, Mars: Results from the Sample Analysis at Mars instrument onboard the Curiosity Rover. *Astrobiology* 20:292–306.
- Tait KT, McCubbin FM, Smith CL, *et al.* (2022) Preliminary planning for Mars Sample Return (MSR) curation activities in a Sample Receiving Facility (SRF). *Astrobiology* 22(S1):S 57–S 80.
- Taylor LA, Hogancamp JV, Watts LA, *et al.* (2018) Disintegration of lunar samples over time: A test. *Meteorit Planet Sci* 53:1096–1103.
- Tsapin AI, Goldfeld MG, McDonald GD, *et al.* (2000) Iron(VI): Hypothetical Candidate for the Martian Oxidant. *Icarus* 147:68–78.
- Udry A, Howarth GH, Herd CDK, *et al.* (2020) What martian meteorites reveal about the interior and surface of Mars. *J Geophys Res Planets* 125:e2020JE006523.
- Velbel MA, Long DT, and Gooding JL (1991) Terrestrial weathering of Antarctic stone meteorites: Formation of Mg carbonates on ordinary chondrites. *Geochim Cosmochim Acta* 55:67–76.
- Velbel MA, Cockell CS, Glavin DP, *et al.* (2022) Planning implications related to sterilization sensitive science investigations associated with Mars Sample Return (MSR). *Astrobiology* 22(S1):S 112–S 164.
- Wade J, Dyck B, Palin RM, *et al.* (2017) The divergent fates of primitive hydrospheric water on Earth and Mars. *Nature* 552:391–394.
- Wang A, Freeman JJ, and Jolliff BL (2009) Phase transition pathways of the hydrates of magnesium sulfate in the temperature range 50°C to 5°C: Implication for sulfates on Mars. *J Geophys Res* 114, E04010, doi:10.1029/2008JE003266.
- Wang A, Ling Z, Freeman JJ, *et al.* (2012) Stability field and phase transition pathways of hydrous ferric sulfates in the temperature range 50°C to 5°C: Implication for martian ferric sulfates. *Icarus* 218:622–643.
- Webster CR, Mahaffy PR, Atreya SK, *et al.* (2015) Mars methane detection and variability at Gale Crater. *Science* 347:415–418.
- Webster CR, Mahaffy PR, Atreya SK, *et al.* (2018) Background levels of methane in Mars' atmosphere show strong seasonal variations. *Science* 360:1093–1096.
- Willerslev E, Cappellini E, Boomsma W, *et al.* (2007) Ancient biomolecules from deep ice cores reveal a forested Southern Greenland. *Science* 317:111–114.
- Wilson SA and Bish DL (2012) Stability of Mg sulfate minerals in the presence of smectites: Possible mineralogical controls on H₂O cycling and biomarker preservation on Mars. *Geochim et Cosmochim Acta* 96:120–133.
- Wilson SA, Power IM, Morgan B, *et al.* (2013) Influence of humidity and temperature on the dehydration of Mg carbonate minerals: Implications for optimizing stability of CO₂ storage in minerals [abstract GC33C 1130]. *American Geophysical Union Fall Meeting*, San Francisco.
- Wordsworth R, Knoll AH, Hurowitz J, *et al.* (2021) A coupled model of episodic warming, oxidation and geochemical transitions on early Mars. *Nat Geosci* 14:127–132.
- Xiaoming W, Li W, Harrington R, *et al.* (2013) Effect of ferrihydrite crystallite size on phosphate adsorption reactivity. *Environmental Science and Technology* 47:10322–10331.
- Yanagishima T, Russo J and Tanaka H (2017) Common mechanism of thermodynamic and mechanical origin for ageing and crystallization of glasses. *Nature Comm* 8:1–10.
- Yen AS (2000) Evidence that the reactivity of the martian soil is due to superoxide ions. *Science* 289:1909–1912.
- Zent AP and McKay CP (1994) The chemical reactivity of the martian soil and implications for future missions. *Icarus* 108:146–157.
- Zent AP, Howard DJ and Quinn RC (2001) H₂O adsorption on smectites: Application to the diurnal variation of H₂O in the martian atmosphere. *J Geophys Res Planets* 106:14667–14674.

For further information about MSPG2, please contact Michael Meyer (Michael.a.meyer@nasa.gov), Gerhard Kminek (Gerhard.kminek@esa.int), David Beaty (dwbeaty@jpl.nasa.gov), or Brandi Carrier (bcarrier@jpl.nasa.gov).

For further information on the technical content of this report, contact any of the above or Nicholas Tosca (njt41@cam.ac.uk).

Acronyms Used

ANGSA = Apollo Next Generation Sample Analysis Program
CheMin = Chemistry and Mineralogy Instrument
CRDS = Cavity Ringdown Spectroscopy
DRH = Deliquescence Relative Humidity
EEV/EES = Earth Entry Vehicle/Earth Entry System; a subsystem of the Earth Return Orbiter spacecraft
EPR = Electron paramagnetic resonance spectroscopy
ERH = Efflorescence Relative Humidity
ESI MS = Electrospray Ionization Mass Spectrometry
FT IR = Fourier Transform Infrared
GC IRMS = Gas Chromatography Isotope Ratio Mass Spectrometry
GCMS = Gas chromatography mass spectrometry
HCN = Hydrogen Cyanide
ICP OES = Inductively coupled plasma optical emission spectrometry

iMOST = International MSR Objectives and Samples Team
IRMS = Isotope Ratio Mass Spectrometer
LR = Viking Labeled Release Experiment
MALDI MS = Matrix assisted laser desorption/ionization mass spectroscopy
MARS2020 = A NASA mission launched in July, 2020 and landed on Mars in Feb. 2021. The primary system is a sample collecting rover named Perseverance.
MAV = Mars Ascent Vehicle
MEPAG = Mars Exploration Program Analysis Group
MSPG = MSR Science Planning Group
MSPG2 = MSR Science Planning Group Phase 2
MSR = Mars Sample Return
ORIS REx = Origins, Spectral Interpretation, Resource Identification, and Security Regolith Explorer
OS = Orbiting Sample Container
SAM = Sample Analysis at Mars
SNC = Shergotty, Nakhla, and Chassigny meteorites
SRF = Sample Fetch Rover
SSAP = Sample Safety Assessment Protocol
STIC = Sample Tube Isolation Chamber
TC/EA = High Temperature Conversion Elemental Analyzer
TS FG = Time Sensitive Focus Group
UHPLC MS/MS = Ultrahigh Performance Liquid Chromatography with Fluorescence Detection and Ultrahigh Resolution Tandem Mass Spectrometry
VL1 = Viking 1 Landing Site
XRD = X Ray Diffractometer