



ALMA MATER STUDIORUM  
UNIVERSITÀ DI BOLOGNA

ARCHIVIO ISTITUZIONALE  
DELLA RICERCA

## Alma Mater Studiorum Università di Bologna Archivio istituzionale della ricerca

Rosa Romana apple: A heritage of the apple germoplasm of the Tuscan-Emilian Apennines to be recovered and promoted

This is the final peer-reviewed author's accepted manuscript (postprint) of the following publication:

*Published Version:*

Alessandri S., Gregori R., Dondini L., Sansavini S. (2021). Rosa Romana apple: A heritage of the apple germoplasm of the Tuscan-Emilian Apennines to be recovered and promoted. *SCIENTIA HORTICULTURAE*, 280(5 April 2021), 1-6 [10.1016/j.scienta.2021.109955].

*Availability:*

This version is available at: <https://hdl.handle.net/11585/800175> since: 2021-02-16

*Published:*

DOI: <http://doi.org/10.1016/j.scienta.2021.109955>

*Terms of use:*

Some rights reserved. The terms and conditions for the reuse of this version of the manuscript are specified in the publishing policy. For all terms of use and more information see the publisher's website.

This item was downloaded from IRIS Università di Bologna (<https://cris.unibo.it/>).  
When citing, please refer to the published version.

(Article begins on next page)

# 1 **Rosa Romana apple: a heritage of the apple germoplasm of the** 2 **Tuscan-Emilian Apennines to be recovered and promoted**

3 S. Alessandri<sup>1</sup>, R. Gregori<sup>1</sup>, L. Dondini<sup>1</sup>, S. Sansavini<sup>1</sup>

4 <sup>1</sup>DISTAL - Department of Agricultural and Food Sciences, University of Bologna, Italy.  
5

## 6 **ABSTRACT**

7 A molecular characterization on the ancient variety 'Rosa Romana' was carried out to improve  
8 biodiversity knowledge and preserve these trees from extinction risks.

9 In this work, 47 accessions were collected throughout an investigation in the Emilia-Romagna region  
10 (Italy) and particularly in the mountain area of the Bologna province (19 collection sites). The  
11 analysis at molecular level by using 15 SSRs (microsatellites) identified two main genotype groups  
12 and ascertained their relationship with several phenotypic traits. This two clusters contained most of  
13 the collected accessions, while remaining genotypes differ clearly, according with the phenotypic  
14 diversity on the behavior of the trees or fruits.

15 This study also revealed the highest quality traits of 'Rosa Romana' apple grown in the Apennines  
16 mountain around Bologna (in a range between 400 and 1000 m.a.s.l.) if compared to each main clone  
17 produced at the lowland corresponding to the Bologna University Agricultural Experimental Station  
18 (30 m.a.s.l). Therefore, the apple quality as color, appearance, taste (flesh firmness and texture,  
19 sweetness, acidity, aroma, polyphenol soreness), were improved in the higher altitudes. In conclusion,  
20 the results of this environmental and genetic investigation on the residual cultivation of 'Rosa  
21 Romana' apple provided a genomic validation of its best identified clones (correspondent to the main  
22 two clusters), which now can be recovered and promoted as new planting, with a own brand 'Rosa  
23 Romana' produced in the Apennines mountain of north Italy.

24

25 **Keywords:** *Malus X domestica* Borkh., accessions, SSR, molecular characterization, qualitative  
26 parameters, Cluster analysis.

## 27 **1 Introduction**

28 Apple (*Malus x domestica* Borkh.) is the main fruit crop of temperate regions of the world such as  
29 Europe, the west area of Turkestan and the south-east and Centre of Asia (Velasco et al., 2010), in  
30 terms of production levels. It occupies a central position as nutritional value and also in culture, art  
31 and folklore (Janick, 2005; Cornille et al., 2014). Much of the genetic diversity of the old cultivated  
32 apples is currently maintained in germoplasm repositories and amateur collections (Alessandri et al.,  
33 2016).

34 The ‘modern’ apple was domesticated in Central Asia from *Malus sieversii* (Velasco et al., 2010;  
35 Cornille et al., 2012; Volk et al., 2005 and 2013) and was brought to Europe through human  
36 migrations between 6,000 and 3,000 years ago (Janick, 2005; Ross-Ibarra et al., 2007; Cornille et al.,  
37 2012). Humans have been exploiting, selecting, and transporting apples for centuries, and several  
38 thousand apple cultivars have been historically documented (Ross-Ibarra et al., 2007; Cornille et al.,  
39 2014). Over time, many of the ‘old’ varieties of Italian apple trees however have been marginalized  
40 and now are present only in small local area. In some cases, only single specimens of trees have  
41 survived, a memory of a glorious past, while unfortunately some genotypes have been forever lost.

42 The first historical quotation of a ‘Rosa’ apple in Emilia-Romagna region dates back to the 16th  
43 century, by the famous naturalist Aldrovandi and a first pictorial representation was released at the  
44 end of the 17<sup>th</sup> century by Bartolomeo Bimbi, a famous painter of the Medici’s court, who painted  
45 more than one hundred apple varieties and reported their correct names (Fideghelli, 2017).

46 ‘Rosa Romana’ was grown in the Reno Valley for its high fruit quality (flavor, taste, texture), high  
47 storability, easy harvesting, short juvenile phases, synchronicity in blooming and fruit ripening  
48 (Gregori et al., 2013). The Reno Valley represents the propagation point of the ‘Rosa Romana’  
49 variety. Probably because this valley was a passage area during the Roman age since it allowed the  
50 connection between the regions of Emilia-Romagna and Tuscany.

51 In 1929, this variety represented the 25% of the apple production in the Bologna area. However, this  
52 apple has almost disappeared in the time frame of thirty years (Sansavini et al., 2018).

53 The ‘Rosa Romana’ fruit descriptor evidences a flattened shape, a short peduncle, a yellow ground  
54 color with bright red on 20-30% of the skin (only in the mountain areas). The fruit has a thick and  
55 slightly waxy skin when the apple is ripe. Normally the peduncle cavity is covered by russetting  
56 (Figure 1). Flesh is firm, juicy, fine, non-crispy and non-astringent. The taste highlights a well-  
57 balanced equilibrium of sweetness and acidity with a slightly bitter aftertaste. Storability without  
58 refrigeration is excellent (even till 4 months), but a controlled atmosphere it can be suggested for  
59 much longer storage. Fruits are susceptible to physiological disorders such as bitter pit, especially in  
60 young, too vigorous, over-nourished trees. The picking time is late autumn as well as the ripening  
61 time (Fideghelli et al., 2017; Sansavini et al., 2018).

62 The international literature on commercial, nutritional and genetic information relating to the ‘Rosa  
63 Romana’ variety is scanty despite its cultivation and use in the Reno Valley dates back to ancient  
64 times (at least since the Roman age).

65 Sansavini et al. (2018), showed like this variety currently consumed and promoted in the market by  
66 local farmers pointing out its health and gustatory qualities together with its strong link with the Reno  
67 Valley territory and history – heritage which deserves proper protection and interest.

68 Farneti et al., 2015 evidenced that ancient apple varieties as ‘Rosa Romana’ have a higher level of  
69 phenols compared to commercial apple cultivars. In particular, the organic acids and the phenolics  
70 compounds were significantly influenced and dependent by human selection. Bignami et al., 2001m  
71 carried out the only reported work on the variability of qualitative traits of the ‘Rosa Romana’  
72 genotype. The analysis of nutrients and polyphenols showed the high quality of this apple.

73 The local germplasm of apple varieties represents a good source for breeding programs so as to  
74 guarantee the availability of a wide genetic variability (Bignami et al., 2001). To preserve this

75 genotype, in particular, it is necessary to identify and classify the possible variables that can be  
76 differentiated over the long cultivation time.

77 Other two accessions grown in this area are: 'Rosa Romana Gentile' and 'Rosa Nostrana'. 'Rosa  
78 Romana Gentile' differs from 'Rosa Romana' for its low russeting, the smaller extension of the red  
79 fruit skin overcolor (Figure 1c), the greater greasiness and for its earlier ripening while 'Rosa  
80 Nostrana' differs from the other apple Roses for its conical fruit shape (Figure 1b), its high greasiness  
81 after storage and for the not excellent sensorial traits, susceptible to scald.

82 It is important to be not confuse this apple genotypes with the other Rose apple varieties which present  
83 distinctive characteristics such as different fruits and lenticellar shape and coloration.

84 As showed by Figure 1, 'Rosa d'Osta' and 'Rosa Mantovana' differ mainly in the rounder shape  
85 compared to the flat shape of 'Rosa Romana' (Figure 1d, e). In addition, 'Rosa d'Osta' is  
86 characterized by a scarce over-color and absence of rust. 'Rosa d'Oliveto' has a longer stalk and a  
87 more uniform red color diffused at lenticellar level compared to 'Rosa Romana' (Figure 1f). Lastly,  
88 'Rosa Marchigiana' presents a shorter stalk and more evident lenticels on the skin compared with  
89 'Rosa Romana' fruit (Figure 1g).

90 Molecular markers [Simple Sequence Repeat (SSR)] are fundamental for verifying the correct  
91 propagation in the nurseries, the true-to-type correspondence and for reducing redundancies in  
92 collections. In particular, microsatellites are considered the most suitable and useful markers for  
93 exploring the genetic diversity because they are i) abundant and well distributed in the genome; ii)  
94 codominant and multi-allelic; and iii) analyzed by multiplexed PCR (Polymerase Chain Reaction)  
95 assays (Baric et al., 2020; Testolin et al., 2019; Larsen et al., 2017; Urrestarazu et al., 2016; Patocchi  
96 et al., 2009; Hayden et al., 2008).

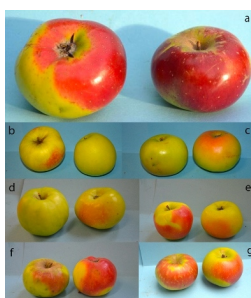
97 The aims of this work are: i) the phenotyping of the selected clones for the fruit quality traits and the  
98 relative comparison with fruits from the lowland; ii) the identification of the genetic variability

99 present among the ‘Rosa Romana’, ‘Rosa Romana Gentile’ and ‘Rosa Nostrana’ accessions sampled  
100 in Reno Valley (hill around 400-600 m.a.s.l. and mountain area around 600-1000 m.a.s.l.).

101 The identification of historical trees and best reference plants for propagation are fundamental steps  
102 for the development of nursery activities. This will also promote and support the exploitation and  
103 protection of such ancient Italian apple cultivars. An increased interest in local products and ancient  
104 flavors is expected to follow.

105

106



107

108

109 Figure 1 – Seven ‘Rosa’ varieties which differ for several fruit traits but having partially the same  
110 root name ‘Rosa’: a) ‘Rosa Romana’ apple (accession #17, cluster 1); b) ‘Rosa Nostrana’ (accession  
111 #3); c) ‘Rosa Romana Gentile’ (accession #2); d) ‘Rosa d'Osta’ (accession #15); e) ‘Rosa Mantovana’  
112 (accession #44); f) ‘Rosa d'Oliveto’ (accession #14); g) ‘Rosa Marchigiana’ (accession #9)

113

## 114 2 Materials and methods

### 115 2.1 Plant material

116 The fruit and leaf samples were collected by historical trees in 17 different locations of the Reno  
117 Valley and in two sites of the Bologna plain (for a total of 47 accessions, Table 1; Figure S1). The  
118 sampled trees from the mountain area are grafted on non-characterized apple seedling and maintained  
119 *in situ* collections by guardian farmers and are grown following the organic farming guidelines.

120 The sample list includes 3 Rosa accessions from the Marche region and 9 Rosa accessions from the  
121 apple collection of the University of Bologna (Table 1). Fruit samples for quality analyses were  
122 collected in two consecutive harvesting years (2018-2019).

Table 1 - List of analyzed accessions and their sampling sites. BO: Bologna; PT: Pistoia.

	<b>Accessions</b>	<b>Sampling Area</b>	<b>Altitude (m.a.s.l.)</b>
#1	Rosa Romana	Santa Maria Villiana	643
#2	Rosa Romana Gentile	Santa Maria Villiana	643
#3	Rosa Nostrana	Santa Maria Villiana	643
#4	Rosa 1	Gaggio Montano (BO)	944
#5	Rosa 2	Gaggio Montano (BO)	944
#6	Rosa 3	Gaggio Montano (BO)	944
#7	Rosa Romana	Castel di Casio (BO)	533
#8	Rosa Romana Gentile	Castel di Casio (BO)	533
#9	Rosa Marchigiana R101	Macerata, Marche	600
#10	Rosa Marchigiana R108	Macerata, Marche	600
#11	Rosa Marchigiana R60	Macerata, Marche	600
#12	Rosa Nostrana o Locale	Bentivoglio (BO) - Villa Smeraldi	19
#13	Rosa Romana	Bentivoglio (BO) - Villa Smeraldi	19
#14	Rosa d'Oliveto	Bentivoglio (BO) - Villa Smeraldi	19
#15	Rosa d'Osta	Cadriano (BO) - UNIBO	32
#16	Rosata Russolina	Cadriano (BO) - UNIBO	32
#17	Rosa Romana	Castal dell'Alpi (BO)	737
#18	Rosa Romana	Monteacuto (BO)	915
#19	Rosa Romana	Malfolle (BO)	500
#20	Musabo Rossa	Castal dell'Alpi (BO)	737
#21	Rugginosa	Castal dell'Alpi (BO)	737
#22	Rosa Romana	Bologna	40
#23	Rosa R. Gentile	Bologna	40
#24	Rosa 1	Bologna - Villa Puglioli	270
#25	Rosa 2	Bologna - Villa Puglioli	270
#26	Rosa 3	Bologna - Villa Puglioli	270
#27	Rosa Romana	Ecchia- Prunarolo (BO)	193
#28	Rosa Romana	Ca Bortolami (BO)	334
#29	Rosa Romana	Ca Bortolami (BO)	334
#30	Rosa Romana	Ca Bortolami (BO)	334
#31	Rosa Romana	Grizzana Morandi (BO)	547
#32	Rosa Romana	Grizzana Morandi (BO)	547
#33	Rosa Romana	Veggio (BO)	550
#34	Rosa Romana	Veggio (BO)	550
#35	Rosa Romana	Pianoro (BO)	200
#36	Rosa Romana	Sambuca Pistoiese (PT)	504
#37	Rosa Romana	Capugnano (BO)	820
#38	Rosa Romana	Camparenda (BO)	800
#39	Rosa Romana	Valgattara (BO)	700
#40	Rosa Romana	Camparenda (BO)	815
#41	Rosa Romana (strain 24)	Cadriano (BO) – UNIBO	32

	Rosa Romana Gentile (strain		
124	#42 43)	Cadriano (BO) – UNIBO	32
	#43 Rosa Romana (strain A23)	Cadriano (BO) – UNIBO	32
	#44 Rosa Mantovana (TN)	Cadriano (BO) – UNIBO	32
	#45 Mela Rosa (PD)	Cadriano (BO) – UNIBO	32
	#46 Rosa d'Oliveto	Cadriano (BO) – UNIBO	32
	#47 Mela Rosa (TN)	Cadriano (BO) - UNIBO	32

---

124

## 125 **2.2 Apple phenotyping: qualitative parameters**

126 After harvesting, fruits were immediately stored at cold room at 0°C with high humidity for about  
127 one month and then kept out in shelf-life for three days to ripen the fruit (Gorny and Kader, 1997).  
128 Fruit weight (g), percentage of overcolour, russeting (%), bitterness (%), soluble solid (%) and  
129 organic acid content (malic acid g/L) have been evaluated on pools of 10 fruits (Gregori et al., 2013).  
130 Firmness was measured by a penetrometer (11 mm diameter probe) on apple surfaces from opposite  
131 sides of each fruit (Kg/cm<sup>2</sup>). A pool of ten apples was analysed for each sampled tree. Soluble Solids  
132 Content (SSC) was determined by a digital refractometer (Atago, Tokyo, Japan) on filtrated apple  
133 juice obtained by homogenizing two slices taken from each of the 10 fruits. Titratable acidity (TA)  
134 was detected by automatic titrator (Crison Instruments, SA, Barcelona, Spain). Twenty millilitres of  
135 juice diluted with additional twenty millilitres of distilled water were titrated to pH 8,1 with 0,25N  
136 NaOH. Trees and fruits were evaluated with pomological descriptors in field after fruit harvesting,  
137 according to Gregori et al. (2013). Percentage of fruit skin overcolour was empirically classified.  
138 Bitterness was estimated by a sensory panel test by ranking the evaluations in classes from 1 to 9 on  
139 an empirical scale (1, absence; 9, maximum intensity). The data were processed (i) by unpaired t-test  
140 to compare means between fruits collected in mountains (the Reno Valley) vs reference those of the  
141 plains (Bologna); ii) by variance analysis (ANOVA) according to Fisher's Least Significant  
142 Difference (LSD) test at P = 0,05 to compare the single samples of different mountain areas with 4  
143 number of replicates per sample in each of the two harvesting years.

144

## 145 **2.3 DNA extraction, SSR genotyping and allele characterization**

146 For each accession, genomic DNA was extracted from 50 mg of young freeze-dried leaves following  
147 the standard CTAB protocol (Maguire et al., 1994). Genomic DNA was quantified by Nanodrop™  
148 ND-1000 Spectrophotometer (Thermo Scientific, Wilmington, DE, USA) and diluted to 10 ng/μl.  
149 Samples were analyzed with 15 SSR markers according to Liang et al. (2015).

150 The molecular data were compared and aligned with the SSR profiles of the references conserved in  
151 the collection of the Department of Agricultural Sciences and Technologies of the University of  
152 Bologna (DISTAL) in Cadriano: 'Rosa Romana' (strain 24), 'Rosa Romana Gentile' (strain 43), 'Rosa  
153 Romana' (strain A23), 'Rosa d'Osta', 'Rosata Russolina', 'Rosa Mantovana [Trento (TN)]', 'Mela  
154 Rosa [Padova (PD)]', 'Rosa d'Oliveto' and 'Mela Rosa (TN)' to better understand the variability  
155 present among the accessions collected.

156 The number of alleles per locus (k), the observed and the expected heterozygosities (Ho and He) and  
157 polymorphism information content (PIC) of the SSRs were estimated using the CERVUS Software  
158 Version 3.0.3 (Kalinowski et al., 2007; Marshall et al., 1998). A PIC value greater than 0.7 was  
159 considered to be highly polymorphic and informative for a certain locus. Subsequently, the  
160 dendrogram tree was calculated by using the NTSYSpc 2.0 software with the coefficient of DICE  
161 (Dice, 1945) and the software R (Project for Statistical Computing). The cluster analysis and the  
162 construction of the dendrogram related to genetic distances were obtained by the UPGMA method  
163 (Unweighted Pair-Group Method).

164

## 165 **3 Results**

### 166 **3.1 Pomology and qualitative parameters**

167 Pomological observation and the analyses of several fruit quality parameters (fruit weight, percentage  
168 of overcolor, russeting, bitterness, soluble solid and organic acid content) was carried out on a pool  
169 of 10 representative fruits for the Rose genotypes ('Rosa Romana', 'Rosa d'Osta', 'Rosa Romana  
170 Gentile', 'Rosa Nostrana', 'Rosa d'Oliveto', 'Rosa Marchigiana' and 'Rosa Mantovana').

171 The statistical analysis was initially elaborated by comparing the pools of individual trees harvested  
172 of 'Rosa Romana' in different locations of the Reno Valley with each other and those in the Bologna  
173 plains (Experimental farm of the University of Bologna, Cadriano and Villa Smeraldi).

174 First of all, the fruits from accessions belonging to the 'Rosa Romana' were not statistically  
175 distinguishable for all the analyzed traits. In fact, all the qualitative parameters analyzed did not show  
176 significant differences among the samples which presented the phenotypic characteristics typical of  
177 the variety (Figure 1a).

178 Differences were observed by comparing samples of 'Rosa Romana' collected in the Reno Valley to  
179 those harvested in the plain (Table 3).

180 In particular, the apples of the plains had a greater fruit weight but with a reduced fruit overcolor  
181 (Table 3).

182 As reported in Table 3, the 'Rosa Romana' plain samples also presented a lower russeting in the  
183 peduncular region of the fruit. In addition, the juice of the apples of the plains had 1° Brix less than  
184 those of the mountains while the acidity was about a half. These data evidence that the fruit quality  
185 traits are enhanced in areas at medium and high altitude (400-800m). This observation was also  
186 confirmed by the analysis of the variance (ANOVA).

187 Finally, data collected on fruits of other Rosa accessions (such as 'Rosa Nostrana') showed difference  
188 respect the 'Rosa Romana' accessions (Table 4). In particular, 'Rosa Nostrana' is differing from the  
189 other Roses for a conical shape of the fruit, less percentage of russeting of the skin apple (1%) and  
190 less pulp firmness at harvest (4,24 Kg/cm<sup>2</sup>), a high greasiness after storage and for the organoleptic  
191 characteristics (Figure 1, Table 4).

192  
193  
194  
195  
196  
197  
198  
199

Area	Mountain (Reno Valley)			Plain (Bologna)			
	Accessions	#4 Rosa 1	#17 Rosa Romana	#1 Rosa Romana	Means	#41 Rosa Romana	#13 Rosa Romana
Medium weight (g)	124b	167a	153a	150	230a	198b	214
Over-colored (%)	35a	35a	23b	24	3b	7a	5
Russeting (%)	20a	26a	11b	14	24a	26a	25
Bitterness (index 1-9)*	8,7a	7b	7,7a	7,8	6a	5,6a	5,8
Brix (%)	16,8a	16b	15,8b	15,1	14,1a	13,9a	14
Firmness (kg/cm <sup>2</sup> )	10,4a	8,39c	9,04b	9,27	6,79a	6,91a	6,85
Acidity (g/l malic acid)	4,9 b	6,5a	6,9a	7,0	3,4a	3,6a	3,5

200 Table 3 - Pomological profile of the 'Rosa Romana' apples from Cluster 1 and Cluster 2; separating  
201 between Mountain and Plain samples, collected in place with different altitude level [Gaggio  
202 Montano (944 m a.s.l.), Castel dell'Alpi (737 m a.s.l.) and S. Maria Villiana (643 m a.s.l.)] and in  
203 Plain (Bologna) [Cadriano (32 m a.s.l.), S. M. Bentivoglio (19 m a.s.l.)].  
204 Analysis of variance (ANOVA) according to Fisher's LSD. \*Index of empirical scale (1, absence;  
205 9, maximum intensity)  
206

207

Accessions	#3 Rosa Nostrana	#2 Rosa Romana Gentile	#15 Rosa d'Osta	#44 Rosa Mantovana	#14 Rosa d'Oliveto	#9 Rosa Marchigiana
Place	S. Maria Villiana (BO)	S. Maria Villiana (BO)	Cadriano (BO)	Cadriano (BO)	Bentivoglio (BO)	Macerata
Altitude (m a.s.l)	643	643	32	32	19	600
Fruit weight (g)	186a	148c	162b	82e	139d	135d
Overcolor (%)	22b	6c	1d	32a	30a	38a
Russeting (%)	1a	2a	3a	3a	2a	2a
Brix (%)	14,5a	13,9b	14b	13c	14,6a	14,1ab
Firmness (Kg)	4,24d	9,29a	7,30b	5,99c	7,56b	7,49b
Acidity (g/l malic acid)	5,3b	5,4b	3,8d	2,9e	6,4a	3,9c

208 Table 4 - Pomological profile of the other apple varieties which differ for several fruit traits from the  
209 'Rosa Romana' phenotype but having partially the same root name 'Rosa'.  
210 Analysis of variance (ANOVA) according to Fisher's LSD. The medium with different letters are  
211 significantly different (P≤0.05).  
212  
213

### 214 3.2 SSR and cluster analysis

215 The 47 samples collected were amplified with 15 pairs of primers already used by scientific  
216 community for their good discriminating ability (Liang et al., 2015). An average of 9 alleles per locus  
217 are observed for a total of 126 alleles. For each analyzed locus the observed and expected  
218 heterozygosity was calculated with CERVUS Software as showed in Table 2. Ho ranged from 0.333

219 for CN444542 to 0.917 CH01A09, CH03G07 and GD12; He ranged from 0,631 for CH02C09 to  
220 0,861 for CH04C07 (Table 2). The highest PIC values of 0.850 and 0.803 were observed for the  
221 markers CH01H01 and GD12, respectively. Values greater than 0.7, were also observed for all the  
222 other SSRs used in the present research. More in detail, SSR loci CH01F02 and CH04C07 were able  
223 to distinguish 12 alleles (Table 2), thus showing their high discrimination power as reported by  
224 Liebhard et al. (2002) and by Cavanna et al. (2008) for apple and pear accessions.

225 UPGMA cluster analysis, based on DICE genetic distance, evidenced the presence of two main  
226 groups of 'Rosa Romana' (namely C1 and C2) that share a high number of alleles, confirming a high  
227 degree of similarity between the analyzed samples but also the allele differences (Figure 2).

228 The first cluster includes 12 accessions (#1, #5, #6, #7, #19, #27, #28, #30, #31, #35, #38, #40) with  
229 100 % of similarity with the reference 'Rosa Romana (strain 24)' (#41) and 'Rosa Romana Gentile  
230 (strain 43)'(#42) of the University of Bologna and other 3 samples (#22, #23, #39) with very low  
231 allele variations (Figure 2). The second cluster could be divided in two subgroups: the former is  
232 represented by 5 accessions (#4, #8, #13, #17, #18) that were identical to the reference of the  
233 University of Bologna 'Rosa Romana (strain A23)'(#43) and the latter one including samples collected  
234 in the area around the Grizzana Morandi site ('Rosa Romana' #32, #33 and #34; Figure 2). Other  
235 samples of 'Rosa Romana' not included in these two clusters (#2, #24, #25, #26, #29, #36, #37)  
236 should be consider as misnomer (Figure 2).

237 Between those groups of accessions, it should also be noted that there are three accessions of 'Rosa  
238 Marchigiana' that are very similar but not identical to each other and differ in 8 alleles from the 'Rosa  
239 Romana' samples. In addition, the two representative samples of the 'Rosa Nostrana' accession (#3  
240 and #12) are clearly separated from the 'Rosa Romana' clusters and they are distinguishable each  
241 other for a number of allele polymorphisms. It is important to underline that the present results could  
242 not uniquely identify the 'Rosa Romana Gentile' accession, as the samples labelled with this name  
243 were all different. In particular, 'Rosa Romana Gentile (strain 43)'(#42) from Bologna was found to

244 belong to Cluster 1 (with a few polymorphic alleles) while the ‘Rosa Romana Gentile’ ( #8) was  
245 found in Cluster 2. The third sample ‘Rosa Romana Gentile’(#2) clearly deviates from the main  
246 clusters and it represents another misnomer.

247 The dendrogram also included other Rosa accessions clearly separated from the ‘Rosa Romana’  
248 clusters. ‘Rosata Russolina’ (#16), ‘Rosa Mantovana (TN)’(#44) and ‘Mela Rosa (TN)’(#47)  
249 presented identical allelic profile and they can be considered as synonyms (Figure 2).

250

251

<b>Locus</b>	<b>K</b>	<b>Ho</b>	<b>He</b>	<b>PIC</b>
<b>CH01A09</b>	8	0.917	0.824	0.784
<b>CH02C09</b>	7	0.583	0.631	0.589
<b>CH03G07</b>	5	0.917	0.687	0.611
<b>CHVf1</b>	7	0.583	0.585	0.544
<b>GD12</b>	10	0.917	0.842	0.803
<b>CH01F2</b>	12	0.833	0.838	0.799
<b>CH02D08</b>	9	0.875	0.820	0.781
<b>CH04C07</b>	12	0.833	0.861	0.828
<b>CH01F03</b>	9	0.875	0.810	0.767
<b>CH01H01</b>	10	0.708	0.883	0.850
<b>CH01H10</b>	8	0.833	0.834	0.794
<b>CH01H02</b>	9	0.542	0.773	0.729
<b>Hi05E07</b>	8	0.875	0.769	0.723
<b>CH05C06</b>	6	0.667	0.809	0.761
<b>CN444542</b>	6	0.333	0.714	0.652

252 Table 2 - Genetic variability parameters: number of alleles per locus (k); observed heterozygosity  
253 (Ho); Expected heterozygosis (He) and the PIC (Polymorphism Information Content) index.

254

255

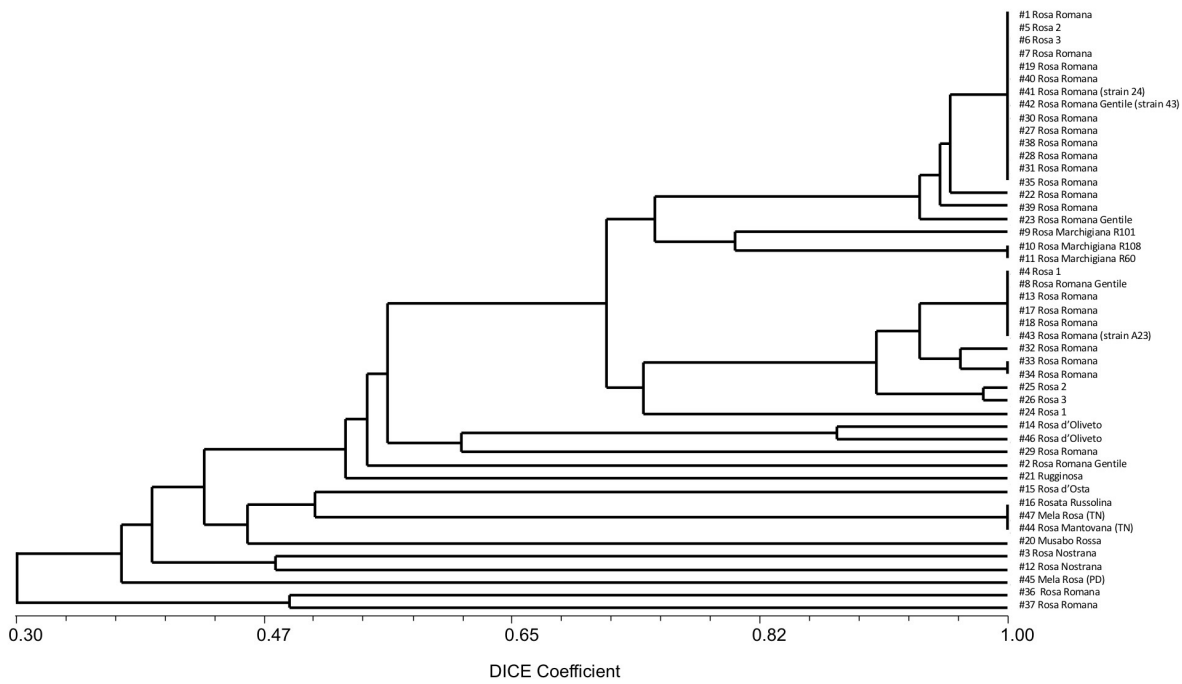


Figure 2 - UPGMA tree indicating the relationships among the 47 accessions.

256  
257  
258

#### 259 4 Discussion

260 This study represents the first step of the re-evaluation process for the old Italian variety 'Rosa  
261 Romana'. The area between 400 and 1000 m.a.l.s within the Reno Valley has been recognized as the  
262 traditional area for cultivation of the 'Rosa Romana' apple which is particularly widespread therein  
263 since the Roman times.

264 Unfortunately, the cultivation of this apple was abandoned for a long time and replaced by cultivation  
265 of conventional apple cultivars. 'Rosa Romana' is currently considered of great interest for promoting  
266 apple cultivation in the Apennines area in analogy with the model studies carried out on 'Annurca',  
267 the ancient apple variety of Naples (Melchiade et al., 2007; Iannaccone et al., 2007).

268 The recovery of surviving trees present in this territory is the first step for the conservation and  
269 valorization of such an old variety of apple germplasm (Sansavini et al., 2018; Bignami et al., 2001).

270 The analysis of the different fruit quality parameters for samples of 'Rosa Romana' showed no  
271 statistically significant difference with reference to the analyzed traits. The main morphological  
272 difference can be found between fruit samples collected in the plains compared to those collected in

273 areas of medium and high altitude (400-800 m.a.l.s.). Due to the higher altitude the fruits of the latter  
274 area present better-quality features, such as less russeting and a more over-colored expression.

275 At molecular level, the high discrimination power of the 15 SSR used suggests a good differentiation  
276 of Rosa apple accessions. The average number of alleles per locus was similar to the values reported  
277 by Liang et al., 2015 (in which the CH03G07 locus also resulted less polymorphic).

278 With the Cluster analysis most of the 47 accessions classified as 'Rosa Romana' were divided into  
279 two main clusters that share a high number of alleles. In both groups at least a reference accession  
280 from the apple germplasm collection of the University of Bologna ('Rosa Romana (strain 24)'(#41)  
281 and 'Rosa Romana Gentile (strain 43)'(#42) for the first cluster and 'Rosa Romana (strain A23)'(#43)  
282 for the second one) was included. In both clusters only a few accessions showed a limited number of  
283 polymorphic alleles, indicating probably the presence of mutations accumulated during the ages. The  
284 first cluster included most of the oldest trees which are phenotypically correspondent to the 'Rosa  
285 Romana' descriptions. The second group, on the other hand, showed a few differences at the  
286 phenotypic level, especially in the fruits of the accessions #33 and #34 of 'Rosa Romana'.

287 Furthermore, the 'Rosa Romana Gentile' and 'Rosa Nostrana' accessions presented different genetic  
288 profiles that created difficulties in defining the correct genotype.

289 Finally, data collected on fruits of other Rosa accessions ('Rosa Mantovana', 'Rosa d'Osta', 'Rosa  
290 d'Oliveto' and 'Rosa Marchigiana') confirmed the difference with the 'Rosa Romana' cultivar in  
291 relation to molecular data and the pomological descriptions.

292 These resulted evidenced that 'Rosa Romana' is an ancient genotype, propagated in the area of the  
293 Tuscan-Emilian Apennines since hundreds of years being well adapted to the different pedoclimatic  
294 environments that characterize this area. The adaptation of this genotype to specific agroclimatic  
295 conditions has created allele diversity within the samples collected.

296 The conservation of this variety implies the discrimination of the different accessions with very  
297 similar phenotype that are present in the original cultivation area (Sansavini et al., 2018). A certain

298 degree of genetic heterogeneity is acceptable for old varieties (Sansavini et al., 2018). Molecular  
299 analysis with microsatellites demonstrated to be the most efficient approach for variety fingerprinting,  
300 for recognizing incorrectly labeled material (homonymy and synonymy) and, consequently, for  
301 preserving the original 'Rosa Romana' genotype.

302 The identification of the most adequate reference plants is a key step for setting up the correct  
303 propagation of this old variety by nurseries and for defining a business plan for its re-evaluation and  
304 promotion for a new market niche. In fact, the organoleptic characteristics of the 'Rosa Romana'  
305 fruits are exalted in the Apennines environmental conditions. If it will be possible to adopt organic  
306 cultivation techniques and control the production costs, in all likelihood 'Rosa Romana' can represent  
307 a new opportunity of income for the farmers of the mountain areas.

308

## 309 **5 Conclusions**

310 In this study we assessed the phenotype and molecular diversity of 'Rosa Romana' accessions  
311 collected in residual cultivation of this ancient variety. The area of these old trees was located in the  
312 middle and upper Reno Valley in the Tuscan-Emilian Apennines.

313 SSR results evidenced the presence of two main groups of 'Rosa Romana' accessions corresponding  
314 to genomic Cluster1 and Cluster2.

315 All these accessions produce fruits that, as listed in the descriptors, are attributable to the variety  
316 'Rosa Romana'. This seems to be the effect of mutations that could be probably accumulated during  
317 the centuries and that produced some allelic difference between the two clusters. Clusters 1 and 2  
318 represent two clones of 'Rosa Romana' and, as consequence, this should be taken into account for a  
319 proper identification of reference plants for setting up the nursery propagation activity and supporting  
320 the protected variety name for the market.

321

322 **Acknowledgements:**

323 This work was carried out thanks to RFO funds of the University of Bologna. Authors thank the  
324 members of the new Association ‘Rosa Romana’ Apple of the Tuscan-Emilian Apennines” for their  
325 help in developing and fulfilment of this important project and for the contribution for this article.  
326 Authors also thank Dr. Claudio Buscaroli (CRPV; Crop Production Research Center of Emilia  
327 Romagna) for his fundamental support in sampling the Rosa Romana and Rosa Nostrana accessions  
328 analysed in this work.

329

330 **References**

- 331 Alessandri, S., Tartarini, S., Buscaroli, C., Dondini, L., 2016. Biodiversità nel germoplasma del melo  
332 emiliano-romagnolo e marchigiano. Riv. di Frutticoltura, 11, 46-51.
- 333 Baric, S., Storti, A., Hofer, M., Guerra, W., Dalla Via, J., 2020. Molecular genetic identification of  
334 apple cultivars based on microsatellite DNA analysis. I. The database of 600 validated profiles.  
335 Erwerbs-Obstbau, 62, 117–154.
- 336
- 337 Bignami, C., Scossa, A., Vagnoni, G., 2001. Evaluation of Old Italian Apple Cultivars by Means of  
338 Sensory Analysis. In International Symposium on Sustainable Use of Plant Biodiversity to Promote  
339 New Opportunities for Horticultural Production 598, November, 85-90.
- 340
- 341 Cavanna, M, Torello Marinoni, D., Bounous, G, Botta, R., 2008. Genetic diversity in ancient apple  
342 germoplasm from northwest Italy, The Journal of Horticultural Science and Biotechnology, 83(5),  
343 549-554 DOI: 10.1080/14620316.2008.11512421
- 344
- 345 Cornille, A., Giraud, T., Smulders, M.J.M., Roldan-Ruiz, I., Gladieux, P., 2014. The domestication  
346 and evolutionary ecology of apples. Trends in Genetics, February, 30, 2, 57-65
- 347
- 348 Cornille, A., Gladieux, P., Smulders, M.J.M., Roldánruiz, I., Laurens, F., Le Cam, B., Nersesyan, A.,  
349 Clavel, J., Olonova, M., Feugey, L., Gabrielyan, I., Zhang, X., Tenaillon, M.I., Giraud, T., 2012. New  
350 insight into the history of domesticated apple: Secondary contribution of the european wild apple to  
351 the genome of cultivated varieties. PLoS Genetics, 8, 5, e1002703
- 352
- 353 Dice L. R., 1945. Measures of the amount of ecologic association between species. Ecology 26, 297–  
302
- 354 Farneti, B., Masuero, D., Costa, F., Magnano, P., Malnoy, M., Costa, G., Vrhovsek, U., Mattivi, F.,  
355 2015. Is There Room for Improving the Nutraceutical Composition of Apple? Journal of agricultural  
356 and food chemistry, 63(10), 2750-2759.
- 357 Fideghelli C., 2017. Atlante dei fruttiferi Italiani, 3 Volumi, III. 1732 pp.
- 358 Gorny, J.R., Kader, A.A., 1997. Low Oxygen and Elevated Carbon Dioxide Atmospheres Inhibit  
359 Ethylene Biosynthesis in Preclimacteric and Climacteric Apple Fruit. Journal of the American  
360 Society for Horticultural Science, 542-546

- 361 Gregori, R., Guerra, W., Berra, L., Bassi, G., Sansavini S., 2013. Panel test sensoriale e comparazione  
362 di varietà in diversi contesti ambientali. Riv. Frutticoltura 11, 44-52.
- 363 Hayden, M. J., Nguyen, T. M., Waterman, A., McMichael, G. L., Chalmers, G. L., 2008. Application  
364 of multiplex-ready PCR for fluorescence-based SSR genotyping in barley and wheat. Mol Breeding  
365 21, 271-281.
- 366 Janick J., 2005. The origin of fruits, fruit growing, and fruit breeding. Plant Breeding Rev. 25, 255-  
367 320.
- 368 Iannaccone, M., Palumbo, D., Ventimiglia, I., Patocchi, A., Spigno, P., Capparelli, R., 2007. Use of  
369 molecular markers and flow cytometry to preserve ancient Annurca apple germplasm. Biotechnology  
370 letters, 29(2): 279-284.
- 371 Kalinowski, S.T., Taper, M.L., Marshall, T.C., 2007. Revising how the computer program CERVUS  
372 accommodates genotyping error increases success in paternity assignment. Mol. Ecol. 16, 1099-  
373 1106.
- 374 Larsen, B., Toldam-Andersen, T.B., Pedersen, C., Ørgaard, M., 2017. Unravelling genetic diversity  
375 and cultivar parentage in the Danish apple gene bank collection. Tree Genet Genomes 13, 14
- 376 Liang, W., Dondini, L., De Franceschi, P., Paris, R., Sansavini, S., Tartarini, S., 2015. Genetic  
377 diversity, population structure and construction of a core collection of apple cultivars from Italian  
378 germplasm. Plant Mol Biol Rep, 33, 458-473
- 379 Liebhard, R., Gianfranceschi, L., Koller, B., Ryder, CD., Tarchini, R., Van de Weg, E., Gessler, C.,  
380 2002. Development and characterisation of 140 new microsatellites in apple (*Malus × domestica*  
381 Borkh.). Mol Breeding 10, 217-241
- 382 Maguire, T. L., Collins, G. C., Sedgley, M., 1994. A modified CTAB DNA extraction procedure for  
383 plants belonging to the family Proteaceae. Plant Mol Biol Rep, 12, 106-109.
- 384 Marshall, T.C., Slate, J., Kruuk, L., Pemberton, J.M., 1998. Statistical confidence for likelihood-  
385 based paternity inference in natural populations. Molecular Ecology, 7, 639-655.
- 386 Melchiade, D., Foroni, I., Corrado, G., Santangelo, I., Rao, R., 2007. Authentication of the ‘Annurca’  
387 apple in agro-food chain by amplification of microsatellite loci. Food Biotechnology, 21(1), 33-43.

388 Patocchi, A., Fernández-Fernández, F., Evans, K., 2009. Development and test of 21 multiplex PCRs  
389 composed of SSRs spanning most of the apple genome. *Tree Genetics & Genomes* 5, 211–223.  
390 <https://doi.org/10.1007/s11295-008-0176-7>

391 Ross-Ibarra, J., Morrell, P.L., Gaut, B.S., 2007. Plant domestication, a unique opportunity to identify  
392 the genetic basis of adaptation. *PNAS*, 15, 104, 1, 8641-864.

393 Sansavini, S., Alessandri, S., Buscaroli, C., Gregori, R., Dondini, L., 2018. Riscoperta e  
394 valorizzazione della mela Rosa Romana. *Riv. di Frutticoltura*, 8, 60-64.

395 Testolin, R., Foria, S., Baccichet, I., Messina, R., Danuso, F., Losa, A., Scarbolo, E., Stocco, M.,  
396 Cipriani, G., 2019. Genotyping apple (*Malus × domestica* Borkh.) heirloom germplasm collected and  
397 maintained by the Regional Administration of Friuli-Venezia Giulia (Italy). *Sci Hortic* 252, 229–237

398 Urrestarazu, J., Denancé, C., Ravon, E., Guyader, A., Guisnel, R., Feugey, L., Poncet, C., Lateur, M.,  
399 Houben, P., Ordidge, M., Fernandez-Fernandez, F., Evans, K.M., Paprstein, F., Sedlak, J., Nybom,  
400 H., Garkava Gustavsson, L., Miranda, C., Gassmann, J., Kellerhals, M., Suprun, I., Pikunova, A.V.,  
401 Krasova, N.G., Torutaeva, E., Dondini, L., Tartarini, S., Laurens, F., Durel, C.E., 2016. Analysis of  
402 the genetic diversity and structure across a wide range of germplasm reveals prominent gene flow in  
403 apple at the European level. *BMC Plant Biol*, 16, 130

404 Velasco, R., Zharkikh, A., Affourtit, J., Dhingra, A., Cestaro, A., Kalyanaraman, A., 2010. The  
405 genome of the domesticated apple (*Malus × domestica* Borkh.). *Nature Genetics*, 42, 10, 833-841

406 Volk, G.M., Henk, A.D., Richards, C.M., Forsline, P.L., Chao, C.T., 2013. *Malus sieversii*: A diverse  
407 Central Asian apple species in the USDA-ARS National Plant Germoplasm System. *HortScience*,  
408 48(12),1440-1444.

409 Volk, G.M., Richards, C.M., Reilley, A.A., Henk, A.D., Forsline, P.L., Aldwinckle, H.S., 2005. Ex  
410 situ conservation of vegetative propagated species: development of a seed-based core collection for  
411 *Malus sieversii*. *J. Amer. Soc. Hort. Sci.* 130(2), 203-210