

Alma Mater Studiorum Università di Bologna
Archivio istituzionale della ricerca

ESC Working Group on Coronary Pathophysiology and Microcirculation position paper on 'coronary microvascular dysfunction in cardiovascular disease'

This is the final peer-reviewed author's accepted manuscript (postprint) of the following publication:

Published Version:

Padro T., Manfrini O., Bugiardini R., Canty J., Cenko E., De Luca G., et al. (2020). ESC Working Group on Coronary Pathophysiology and Microcirculation position paper on 'coronary microvascular dysfunction in cardiovascular disease'. *CARDIOVASCULAR RESEARCH*, 116(4), 741-755 [10.1093/cvr/cvaa003].

Availability:

This version is available at: <https://hdl.handle.net/11585/758759> since: 2020-05-14

Published:

DOI: <http://doi.org/10.1093/cvr/cvaa003>

Terms of use:

Some rights reserved. The terms and conditions for the reuse of this version of the manuscript are specified in the publishing policy. For all terms of use and more information see the publisher's website.

This item was downloaded from IRIS Università di Bologna (<https://cris.unibo.it/>).
When citing, please refer to the published version.

(Article begins on next page)

**ESC Working Group on Coronary Pathophysiology &
Microcirculation Position paper on 'Coronary Microvascular
Dysfunction in Cardiovascular Disease'**

Short title: *Coronary Microvascular Dysfunction*

Teresa Padro^{1#}, Olivia Manfrini^{2#}, Raffaele Bugiardini², John Canty³, Edina Cenko², Giuseppe De Luca⁴, Dirk J Duncker⁵, Etto C Eringa⁶, Akos Koller^{7,8}, Dimitris Tousoulis⁹, Danijela Trifunovic¹⁰, Marija Vavlukis¹¹, Cor de Wit¹², Lina Badimon^{1*}

Both authors have contributed equally

***Corresponding Author**

Authors affiliations:

¹ Cardiovascular Program-ICCC, Research Institute Hospital Santa Creu i Sant Pau; CiberCV-Institute Carlos III; UAB, Barcelona, Spain

² Department of Experimental, Diagnostic and Specialty Medicine, University of Bologna, Bologna, Italy

³ Division of Cardiology, Department of Medicine, State University of New York at Buffalo, Buffalo, New York, USA

⁴ Maggiore della Carità Hospital, Eastern Piedmont University A. Avogadro, Novara, Italy

⁵ Division of Experimental Cardiology, Department of Cardiology, Thoraxcenter, Cardiovascular Research Institute COEUR, Erasmus University Medical Center, Rotterdam, The Netherlands

⁶ Department of Physiology, Amsterdam Cardiovascular Science Institute, Amsterdam University Medical Centres, Amsterdam, The Netherlands

⁷ Department of Translational Medicine, Faculty of Medicine, Semmelweis University, Budapest, Hungary

⁸ Department of Physiology, New York Medical College, Valhalla, NY, USA

⁹ First Department of Cardiology, Hippokration Hospital, University of Athens Medical School, Athens, Greece

¹⁰Department of Cardiology, University Clinical Center of Serbia; and School of Medicine, University of Belgrade, Belgrade, Serbia

¹¹University Clinic of Cardiology, Faculty of Medicine, University Ss' Cyril and Methodius, Skopje, Macedonia

¹²Institut für Physiologie, Universität zu Lübeck and Deutsches Zentrum für Herz-Kreislauf-Forschung (DZHK), Lübeck, Germany

Address for corresponding author (*):

Prof. Lina Badimon

Cardiovascular-Program ICCC;

Research Institute Hospital Santa Creu i Sant Pau

Sant Antoni M^a Claret 167, 08025 Barcelona, Spain.

Phone: +34.935565882.

Fax: +34.935565559.

E-mail: lbadimon@santpau.cat

Manuscript word count:	12,265
Abstract word count:	202
Total number of figures and tables:	6 Figures
Supplementary material online:	3 Supplementary Tables

Abstract

Although myocardial ischemia usually manifests as a consequence of atherosclerosis-dependent obstructive epicardial coronary artery disease, a significant percentage of patients suffer ischemic events in the absence of epicardial coronary artery obstruction. Experimental and clinical evidence highlight the abnormalities of the coronary microcirculation as a main cause of myocardial ischemia in patients with “normal or near normal” coronary arteries on angiography. Coronary microvascular disturbances have been associated with early stages of atherosclerosis even prior to any angiographic evidence of epicardial coronary stenosis, as well as to other cardiac pathologies such as myocardial hypertrophy and heart failure.

The main objectives of the manuscript are: (1) to provide updated evidence in our current understanding of the pathophysiological consequences of microvascular dysfunction in the heart; (2) to report on the current knowledge on the relevance of cardiovascular risk factors and co-morbid conditions for microcirculatory dysfunction; and, (3) to evidence the relevance of the clinical consequences of microvascular dysfunction.

Highlighting the clinical importance of coronary microvascular dysfunction will open the field for research and the development of novel strategies for intervention, will encourage early detection of subclinical disease and will help in the stratification of cardiovascular risk in agreement with the new concept of precision medicine.

Keywords: microvessels, coronary microcirculation, molecular and cellular targets, risk factors, **ischemic** heart disease,

1. Introduction

Myocardial infarction and myocardial ischemia have been traditionally considered a “large vessel” disease caused by atherosclerosis and obstructive atherothrombotic events in epicardial coronary arteries that lead to the complete occlusion of the vessel at the “culprit site”. While the coronary microcirculation is not affected by atherosclerosis, impairment of microvascular blood flow is an established cause of myocardial ischemia.

Coronary microcirculation refers to different anatomically and functionally vascular compartments (<500 μm diameter) with a critical role in the physiological regulation of myocardial perfusion. Coronary microcirculation is responsible for the regulation of blood flow distribution to cover the metabolic demands of the myocardium and the modulation of peripheral vascular resistance. **In healthy individuals, without significant epicardial atherosclerosis, increases in myocardial metabolic demand are met by progressive vasodilation of coronary arterioles, which can normally induce a 5-fold increase of coronary blood flow.**

Coronary microvascular dysfunction (CMD) refers to a term covering a wide spectrum of clinical situations in which the structure and function of the coronary microcirculation is affected. This leads to impaired responses of the coronary flow to vasodilator stimuli, being characterized by impaired coronary flow reserve (CFR) with cut-off values below 2.0-2.5 depending on the methodology, or abnormal high index of coronary microvascular resistance (IMR; e.g. IMR >25) and/or focal or diffuse vasoconstriction during acetylcholine provocation testing, in the absence of any significant epicardial coronary artery obstruction (>50% lumen stenosis at coronary angiography) or preserved fractional flow reserve (FFR, value ≥ 0.80).^{1,2}

A wide spectrum of cardiac and systemic conditions can lead to myocardial ischemia due to CMD without significant epicardial coronary obstruction^{1,3,4} These diseases are mainly those that cause left ventricular hypertrophy (hypertrophic cardiomyopathy, aortic stenosis, and hypertensive heart disease) or inflammation (myocarditis or vasculitis).^{1,3-6} However, often, it is in the absence of other diseases that functional and/or structural **alterations** in coronary microcirculation are responsible for myocardial ischemia. This condition affects up to 50% of subjects

with chronic coronary syndromes, up to 20% of those with acute coronary syndromes (ACS) and associates with an increase in event rates.

In light of these considerations, the objective of the present position paper of the ESC Working Group on Coronary Pathophysiology and Microcirculation is to provide updated evidence and a critical view in our understanding of the pathophysiology of microvascular dysfunction in association with ischemic heart disease. This includes a detailed discussion, based on clinical and experimental evidence, on the relevance of cardiovascular risk factors and co-morbid conditions in CMD, and a critical view on the relevance of CMD in non-obstructive ischemic heart disease and its clinical consequences in STEMI-patients

2. Coronary microcirculation and ischemic heart disease

CMD is a multifactorial disease prevalent in a wide spectrum of clinical cardiovascular situations. Traditionally, CMD has been classified according to the clinical setting in which it may occur.⁵ Here, CMD is discussed in relation to the phenotype and severity of CAD (non-obstructive chronic coronary syndrome, obstructive chronic coronary syndrome, non-obstructive ACS, obstructive ACS and no-reflow), highlighting aspects from pathophysiology to treatment, including diagnosis, incidence and prognosis.

Coronary microvascular dysfunction in chronic coronary syndrome

CMD in non-obstructive chronic coronary syndrome

A significant number of patients with symptoms and signs of ischemic heart disease do not have a significant coronary artery stenosis (>50%).⁶⁻⁸ This phenomenon termed 'ischemia with non-obstructive coronary artery disease (INOCA)' is associated with increased risk for major cardiovascular events compared with an asymptomatic reference population.^{9,10}

Major risk factors for INOCA include dyslipidaemia, obesity, metabolic syndrome and diabetes.¹¹ The **pathophysiological link between** metabolic dysregulation and INOCA

most likely involves CMD (**Figure 1**). **The mechanisms underlying CMD in non-obstructive CAD are still incompletely understood, but they implicate both functional and structural changes. Thus, both experimental^{12,13} and clinical¹⁴ studies have shown that endothelial dysfunction is a key mediator in the pathogenesis of CMD. This includes** attenuation of endothelium-dependent vasodilation resulting from reduced nitric oxide (NO) bioavailability¹² and increased vasoconstrictor responses to endothelin-1 (ET-1), prostaglandin H2 and thromboxane A₂,¹³ **in swine models of metabolic dysregulation.**

Increased sympathetic activity produces exaggerated alpha-adrenergic coronary vasoconstriction **in patients with metabolic syndrome.**¹⁵ Likewise, **in patients with pre-hypertension and metabolic syndrome,** activation of the renin angiotensin aldosterone system (RAAS) increases angiotensin II-mediated vasoconstriction in the coronary circulation.¹⁶ Additionally, adipocyte-derived free fatty acids and leptin also lead to increased adrenergic tone.¹⁶ **Experimental studies have shown that** adipocytes and perivascular adipose tissue-derived adipokines such as leptin, resistin, IL-6 and TNF- α are potent pro-inflammatory molecules that can promote oxidative stress in the endothelium and impair endothelial function and NO bioavailability, either directly or via increased ET-1 production.^{11,17}

Changes in microvascular structure also contribute to CMD. Ossabaw swine with MetS had a blunted response to adenosine along with a reduced microvascular density.¹⁸ In a similar model, hyperaemic flow was impaired with hypertrophic inward remodeling of coronary resistance arteries, capillary rarefaction and augmented myogenic tone in isolated coronary arterioles.¹⁹ Taken together, microvascular dysfunction, inward remodeling of resistance arteries and reductions in vascular density can all reduce flow reserve and produce regional ischemia in the absence of an epicardial stenosis in humans and in animal models with co-morbidities.^{11,17}

CMD in obstructive **chronic coronary syndrome**

Differing from the healthy heart, in which the coronary microcirculation is the principal site of vascular resistance, in the setting of a physiologically significant epicardial artery stenosis, this additional resistance limits maximal coronary blood flow. While some of this reduction is secondary to the pressure loss across the stenosis,²⁰ there is also evidence that abnormalities in the control of coronary microvascular tone and microvascular structure, can contribute to the reductions in CFR.²¹ Experimental studies have demonstrated that decreases in post-stenotic perfusion pressure can trigger structural and functional alterations in the distal microvasculature.²⁰ These include inward remodeling of the coronary resistance arteries and coronary arteriolar and capillary rarefaction distal to a coronary stenosis. Capillary rarefaction is also seen in dysfunctional myocardium of patients undergoing coronary bypass surgery and is a predictor of poor functional recovery following revascularization.²² The concept that such structural microvascular abnormalities persist long after revascularization is supported by experimental studies in swine, in which weeks after revascularization of hibernating myocardium, resting flow normalizes but the flow response to metabolic stress (i.e. high-dose dobutamine infusion) remains blunted.²³ Microvascular rarefaction occurs rather rapidly because it is already detected after 90 minutes LAD-occlusion **in an experimental model of MI in swine** and can be partially recovered by delivery of stem cells or stem cell-derived products.²⁴ This is an area of active research because it may represent a novel therapeutic intervention to reduce CMD.

Interestingly, the recently presented ISCHEMIA trial (International Study of Comparative Health Effectiveness With Medical and Invasive Approaches - recently presented at the AHA scientific session 2019) showed that revascularization was not better than optimal medical therapy, in stable patients with at least moderate ischemia and $\geq 50\%$ stenosis in a major epicardial vessel. In this very complicated and long trial, the reduction of the epicardial stenosis did not produce the expected benefits supporting the concept of the importance of mechanisms independent of epicardial arteries in ischemia symptoms.

Functional coronary microvascular remodeling distal to a stenosis may reflect impaired vasodilator function as well as increased vasoconstrictor responses, **as supported by**

experimental studies in dogs.²⁵ In this respect, exaggerated ET-1 induced vasoconstriction was documented in isolated coronary arterioles from swine with a chronic stenosis (**Figure 1**).²⁶ Surprisingly, vasodilator responses to bradykinin were preserved while ET_B-mediated vasodilation was lost. The preservation of endothelial vasodilation to bradykinin may have reflected a shift in mechanism from NO to dilator endothelium-derived hyperpolarizing factor (EDHF). Indeed, the contribution of EDHF to the regulation of coronary microvascular tone in humans has been shown to accompany the loss of NO with the progression of CAD.²⁷ **Experimental studies have shown that** structural inward remodeling of arterioles can be produced at low intraluminal pressure *in vitro* and is enhanced by ET-1 and prevented by the calcium-antagonist amlodipine.²⁸

Coronary microvascular dysfunction in acute coronary syndromes (ACS):

CMD in non-obstructive ACS

ACS with normal or near-normal coronary arteries on coronary angiography refers to a heterogeneous clinical entity with multiple potential causes that not always are apparent. Within this condition, MINOCA is defined as myocardial infarction with non-obstructed coronary arteries (< 50% diameter stenosis in a major epicardial vessel) that refers to an ischaemic mechanism responsible for myocyte injury and troponin elevation. The concept of MINOCA has been recently included in the STEMI guidelines (2017) of the European Society of Cardiology.³ MINOCA is more common in women than in men and in patients presenting with NSTEMI than those presenting with STEMI.²⁹

Pathophysiology of non-obstructive ACS may involve epicardial or microvascular causes (i.e. CMD), and cardiac non-ischemic etiologies (i.e. myocarditis or Takotsubo Syndrome) (**Figure 2**).^{5,30} **Myocardial disorders, including the Takotsubo cardiomyopathy, were initially included into the definition of MINOCA.**³¹ **However, according to the recently published Fourth Universal Definition of Myocardial Infarction, diagnosis of MINOCA, like diagnosis of MI, refer to ischaemic mechanisms responsible for the myocyte injury, whereas non-ischaemic**

causes such as myocarditis have been excluded.³² Among MINOCA patients, coronary microvascular spasm is suggested to account for 16% of cases.³³ Patients with non-obstructive ACS exhibit a significant coronary dysfunction, which seems to involve both an increased constrictor reactivity, likely mainly involving the coronary microcirculation, and a reduced microvascular dilator function both persisting at 12-month follow-up.^{31,34}

CMD in obstructive ACS

It is generally assumed that epicardial events precede and are cause of microvascular dysfunction. However, a novel concept of the mechanisms resulting in ACS takes into account the primary dysfunction of the microcirculation in addition to the vulnerable plaque as causal contributor to myocardial damage and infarct size (**Figure 2**). Thus, transient or permanent microvascular dysfunction limits coronary blood flow and leads to alterations of the shear stress affecting endothelial function and enhancing thrombus formation at epicardial level.³⁵

A major challenge for considering the primary role of CMD is the lack of data on microvascular function prior to an ACS. Thus, much work remains to understand the mechanisms involving microcirculatory impairment prior, during and after ACS.

CMD and coronary no-reflow

Timely reperfusion therapy after acute myocardial infarction (AMI) is a key **factor in reducing** infarct size and **improving** ventricular function and clinical outcome. Unfortunately, even in the absence of a residual **epicardial** stenosis, revascularization does not always re-establish effective microcirculatory perfusion due to the no-reflow phenomenon,³⁶ which occurs more frequently in women.³⁷ **Results in animal models suggest that** suboptimal reperfusion after percutaneous coronary intervention (PCI) is related to microvascular disorders resulting from microvascular obstruction (MVO) secondary to endothelial injury and/or distal embolization.³⁸ **In addition, experimental studies define MVO as an independent predictor of adverse left ventricular remodeling.**³⁹ **Moreover, a recent pooled analysis of individual data from seven randomized trials supports the notion that presence and extent of MVO after**

primary PCI in STEMI patients strongly associates with major adverse cardiovascular events occurring within a year.⁴⁰

Coronary microvascular endothelial damage, resulting from either ischemia-reperfusion and/or the associated comorbidities (metabolic dysfunction, hypertension, aging and dyslipidemia), is thought to play a critical role **in the no-reflow phenomenon.**⁴¹ However, other mechanisms have also been proposed to contribute, including activation of inflammatory pathways, myocyte edema, platelet activation or leukocyte infiltration.³⁸ Interruption of blood flow, followed by its acute restoration, results in endothelial dysfunction leading to alterations in the balance between the different vasomotor pathways, as summarized in **Figure 3**. With increasing severity of ischemia-reperfusion injury, even more extensive microvascular injury occurs, with increased vascular permeability, thinning of the capillary wall and loss of viable cell-cell junctions, leading to edema and even intramyocardial haemorrhage.⁴² Although there is no evidence that no-reflow contributes to secondary cardiomyocyte damage, it may affect infarct healing responses – i.e. lead to infarct thinning - and may thus aggravate post-infarct remodeling.⁴³ Recent studies on P2Y12 inhibitors in a porcine model of ischemia/reperfusion have shown a significant reduction in no-reflow in treated animals.^{44,45} **Novel preclinical and clinical studies are needed to reduce MVO and improve clinical outcomes.**

CMD in reperfused acute MI

Moreover, there is clinical evidence showing that CMD may contribute to the persistence or recurrence of angina following successful revascularization after AMI.^{46,47} This represents an important unresolved clinical problem that affects from one fifth to one third of patients undergoing myocardial revascularization at one-year follow-up. CMD in reperfused AMI is associated with adverse remodeling, lower ventricular function and worse prognostic.⁴⁸ Up to now, however, there is a recognized lack of knowledge of how ameliorate CMD and improve signs and symptoms of myocardial ischemia in these patients, in part due to an insufficient understanding of the underlying pathophysiology. Multiple underlying causes can contribute to CMD after successful PCI and stenting, from endothelial dysfunction, increased oxidative stress, reduced NO-release, to low

shear stress conditions distal to the stenosis that may negatively influence microvascular function. In addition, a masked CMD pre-existing to PCI might also account for the prevalence of anginal symptoms and/or myocardial ischaemia after a successful PCI.⁴⁹ Signs of ischemia/reperfusion injury affecting coronary microcirculation go from reversible interstitial edema that acts compressing coronary microcirculation to capillary destruction with intramyocardial hemorrhage. Interstitial iron deposition induces an inflammatory response that contributes to microvascular injury.⁵⁰ Several mechanisms contributing to microvascular injury in reperfused AMI do not differ from those contributing to cardiomyocyte injury. To date, however, the temporal and causal relationship between both pathologic conditions needs to be clarified.⁵⁰

3. Factors increasing the risk of CMD

Risk factors for CMD do not differ from those for epicardial macrovascular arterial disease including diabetes mellitus, obesity, hypertension, hyperlipidaemia, smoking and age, which, separately and synergistically, contribute to CMD (**Figure 4**). Thus, an increasing number of traditional cardiovascular risk factors associate with reduced values of myocardial perfusion reserve index and abnormal microvascular dilation leading to impaired CFR.

Diabetes and Obesity

Diabetes is a strong inducer of microvascular dysfunction, but the relationship is bidirectional since microvascular dysfunction in muscle and adipose tissue also contributes to the pathogenesis of type 2 diabetes.⁵¹ As CMD precedes hyperglycaemia in the pathogenesis of type 2 diabetes, factors other than hyperglycaemia contribute to CMD in type 2 diabetes. CMD in diabetes is characterized by decreased NO activity, increased production of reactive oxygen species (ROS), increased endothelin synthesis, reduced endothelial barrier function and elevated inflammatory activity. Oxidative stress, a basic pathological mechanism in ischemic myocardial injury, is caused by an imbalance between excessive production and detoxification of free radicals, especially ROS, in the vascular endothelial cells resulting

in the oxidative modification of cellular and extracellular components directly affecting cell function and viability. Diabetes is an endocrine multi-organ disease, **and consequently diabetes-associated CMD has been detected in multiple organs including the heart, retina, kidney, and skin. In pigs, diabetes decreases myocardial blood flow and capillary density (rarefaction)**⁵²

Overweight and obesity, common in type 2 diabetes, are characterized by CMD even in the absence of signs and symptoms of cardiac ischemia or dysfunction. **In human** obesity, and especially in abdominal obesity, perivascular and epicardial adipose tissue accumulate around the coronary vasculature and heart, and become inflamed.⁵³

Hypertension

Hypertension intensifies CMD through **functional and** structural alterations in the microcirculation. **Clinical studies provide evidence** that microvascular hallmarks of hypertension are inward remodeling of resistance arteries and microvascular rarefaction,⁵⁴ determinants of microvascular resistance reducing myocardial blood flow.

Chronic hypertension, obesity and diabetes gradually reduce kidney function and are strong risk factors for chronic kidney disease (CKD), with high cardiovascular complications including myocardial hypertrophy, heart failure and myocardial ischemia, associated with CMD, **as supported by the fact that most patients with CKD do not reach end-stage renal disease, but die from cardiovascular complications.**⁵⁵

The molecular connections between diabetes and hypertension are highlighted in Zucker rats, that show how elevated glucose concentrations activate Rho-kinase, which in turn inhibit internalization and facilitates recycling of angiotensin 1 type (AT1) receptors, leading to increased functional availability of AT1 receptors and sustained angiotensin II-induced arterial constriction.⁵⁶

Dyslipidemia

Dyslipidemia is a major risk factor for microvascular dysfunction. Hypercholesterolemic patients have clear evidence of reduced CFR,⁵⁷ from the early stages of atherosclerosis and before any angiographic evidence of coronary stenosis. Plasma levels of total cholesterol and LDL-C **inversely correlate** with the FFR and the

IMR, independently of the severity of coronary atherosclerosis or the number of diseased vessels. Hypercholesterolemia has been proven to lead to larger infarcts and adverse cardiac remodeling post-myocardial infarction by compromising microvascular function **in acute STEMI patients**.⁵⁸

CMD linked to hypercholesterolemia primarily relates to impaired endothelium-dependent vasodilation in arterioles. This could be in part due to increased generation of ROS. Interestingly, Ox-LDL dependent changes in large conduit arteries are mirrored at the microvessels, as demonstrated by Hein et al. **using an experimental model of isolated porcine coronary arterioles**.⁵⁹ The detrimental effect of OxLDL on endothelium-dependent dilation of arterioles is specifically mediated by the reduction in the expression and function of NO synthase (eNOS) and a low NO-bioavailability, whereas Ox-LDL does not affect the vasodilation of arterioles mediated by components such as cyclooxygenase and cytochromeP-450 monooxygenase nor mediated by endothelial hyperpolarization.⁵⁹

In addition, the pathogenic mechanisms contributing to dyslipidemia-induced CMD include inflammation, innate and adaptive immune cell responses, and pro-thrombotic conditions.

4. Sex, microvascular dysfunction and cardiovascular risk

Women with suspected or confirmed ischemic heart disease (IHD), especially when young, have less atherosclerosis than men and less prevalence of obstructive CAD. However, women at young age have similar prevalence of STEMI than men.⁶⁰ Women more often have unexplained higher mortality rates after STEMI, which may be due to smaller vessel size, less collateral flow, more vascular stiffness and concurrent CMD.⁶¹ In addition, a disproportionate burden of coronary risk factors and comorbidities is a clear feature of women even after adjustment for age. Nevertheless, risk factors have a different impact on mortality depending on age and sex.^{37,61} Type 2 diabetes is more likely to be associated with endothelial dysfunction and CMD in women than in men. Similarly, smoking is a well-established cardiovascular risk factor for both sexes, but this is significantly increased in women under age 60, and more markedly in young women who combine the habit of smoking with the use of oral contraceptives.

Indeed, experimental data suggest complex oestrogen-related gender-specific differences in the regulation of NO-mediated microvessel vasomotor function in female and male. These findings may help to better understand the human observations showing significant gender-specific differences in the epidemiology, pathophysiology, clinical features, prognosis and treatment success between women and men.⁶² It seems that sex differences of the coronary circulation are especially pronounced. Therefore there is an urgent clinical unmet need to develop gender-specific therapeutic and preventive modalities.

In addition, high risk pregnancies (e.g. gestational hypertension or diabetes) and other factors related to the female reproductive cycle (e.g. polycystic ovary syndrome) give women added vulnerability to develop cardiovascular disease, being recently referred to as sex-specific cardiovascular risk factors.⁶³ However, their pathological relevance on the microcirculation has not been established.

5. Microvascular endothelial dysfunction and vasospastic angina

Maseri et al.⁶⁴ suggested “coronary artery spasm” as the underlying pathogenic factor of variant angina and Bugiardini et al.⁶⁵ defined “vasotonic angina” as a diffuse epicardial coronary constriction, usually $\geq 50\%$ of lumen diameter, confined to the distal segments of the coronary arteries and limiting the blood flow supply to the myocardium, which produces myocardial ischemia in the presence of normal smooth coronary arteries at angiography. In vasotonic angina the microcirculation is still the major culprit as assessed by coronary blood flow measurements in the coronary sinus, suggesting a concurrent involvement of functional abnormalities in macro- and micro-vessels of the coronary tree. Thus, endothelial dysfunction is significantly associated with diffuse epicardial vasoconstrictor response **following intracoronary infusion of acetylcholine** with adverse cardiovascular events.⁶⁶ Assessment of endothelial function may identify early changes in vasoactive functions relevant in the development of atherosclerosis rather than identifying atherosclerotic lesions per se, **as documented in a study in women with chest pain and normal coronary angiograms.**⁶⁷

6. Mechanical, cellular and molecular effectors of microvascular dysfunction

Hemodynamic forces: pressure and shear stress

The endothelial layer lining the interior of blood vessels is directly exposed to hemodynamic forces. High blood pressure accelerates development of atherosclerotic plaques in large epicardial coronaries and endothelial dysfunction of microvessels of the heart. High intraluminal pressure elicits constrictions of **isolated** small **coronary** arteries and arterioles **in rats**,⁶⁸ which serves – in part – to protect the distal microcirculation, including the capillary bed, and edema development due to high hydraulic/filtration pressure. This, however, imposes higher blood flow velocity and thus shear stress on the endothelium of upstream large vessels, and at branching points.⁶⁹

Hemodynamic forces have a wide spectrum of mechanical and molecular signalling effects on the endothelial cells, impacting their morphology and vasomotor function.^{68,70} Thus, the endothelium “senses” and “transduces” abnormal physical forces into cellular signalling events leading to vascular damage. However, major challenges remain in understanding how interactions between mechanotransduction and chemical signals - such as risk factors - play a pivotal role in eliciting the responses to shear stress in the different vascular beds.

Inflammation

Systemic inflammation may be a link between CMD and atherosclerosis. Inflammation-mediated endothelial cell activation is characterized by enhanced production of ROS, and platelet and leukocyte adhesion to the endothelium due to endothelial upregulation of adhesion molecules (e.g. P-selectin) and loss of endothelial barrier function,⁷¹ with detrimental effects on the epicardial coronary endothelium but also inducing CMD. Sources of ROS/superoxide are NADPH oxidase, xanthine oxidase, mitochondrial respiration, in addition to uncoupled eNOS.⁷² ROS/superoxide production plays a key role in the attenuation of NO bioavailability, as described above and it has been linked to the inflammatory response, possibly invoking stress-activated protein kinases such as c-Jun N-terminal kinases, **in hypercholesterolemic mice**.⁷³

The impact of inflammatory endothelial activation is less clear for other endothelial dilator mechanisms, specifically the endothelium-dependent dilator principle that relies on hyperpolarisation (EDH-type dilation). The EDH-type dilation is most important in the microcirculation and therefore must be considered in the setting of CMD. Experimental studies using different animal models of cardiovascular risk reveal a shift of the endothelial-dilator mechanism from NO to EDH in arterioles rather than a global impairment of the response. Similarly, plasticity in endothelial signalling is found in the human microcirculation in disease,⁷⁴ suggesting involvement of further mechanisms.

Platelet activation

Clinical studies support the relevance of platelets at the microvascular level during ischemia-reperfusion. Thus, platelets contribute to functional and structural coronary MVO occurring after PCI in a large proportion of patients.⁷⁵

Platelets may compromise blood flow at the microvascular level by forming distal microemboli and by adhering to reperfused capillary or venular endothelium or to attached leukocytes, contributing to the release of vasoconstrictor or toxic molecules and a plethora of inflammatory mediators that further enhance the activation of the endothelial monolayer and the recruitment of circulating leukocytes.⁷⁶

Platelet adhesion occurs in intact inflamed microvessels without the need of exposed extracellular matrix material. Oxidative stress, endothelial cell activation, and the accompanying recruitment of rolling and firmly adherent leukocytes are common features for platelet adhesion to the endothelium in the microcirculation. Molecules mediating this interaction are P-selectin and P-selectin glycoprotein ligand-1 (PSGL-1) or glycoprotein-Ib and von-Willebrand factor.⁷⁷

Adhering to the endothelial cell lining turns platelets into effectors that boost the inflammatory process. They release a large number of proteins from preformed granules, synthesize bioactive molecules (ROS, thromboxane) or shed them from the membrane (e.g. CD40L). This promotes further activation of endothelial cells that express adhesion molecules such as intercellular adhesion molecule 1 (ICAM-1) fostering leukocyte-endothelial interaction. The interaction platelet CD40L with endothelial CD40-receptor is specifically important in the induction of inflammation-

associated microvascular thrombosis, **as demonstrated in venules and arterioles of wild type and CD40 / CD40L deficient mice.**⁷⁸

In addition to the effects elicited through adhesion to the endothelium, activated platelets present HMGB1 (high mobility group box-1) that enhances production of neutrophil extracellular traps (NETs). A recent experimental study of ischemia-reperfusion in rat demonstrates that NET-mediated microthrombosis significantly contributes to myocardial "no-reflow".⁷⁹

Autonomic dysfunction

Coronary microvascular tone, defined by the ratio between baseline and maximal vessel diameter, is regulated by several mechanisms including: myogenic tone, metabolic control exerted by adjacent cells, endothelial function, and circulating factors, alongside autonomic innervation.⁸⁰

Adrenergic innervation provides a mechanism for vessel tone regulation that is particularly important during exercise, or in the presence of endothelial dysfunction, but it has a negligible contribution to resting vascular tone in the healthy coronary circulation,⁸¹ since coronary flow is mainly modulated by mechanisms of non-neural origin in normal conditions. Adrenergic receptors (α - and β -adrenergic receptors) regulate coronary circulation at the level of vascular endothelial and smooth muscle cells. Increased sympathetic activity results in stimulation of the β -adrenergic receptors, with β_2 being the main adrenoceptors in the coronary microcirculation. Conversely, α -adrenergic stimulation produces vasoconstriction, with exception of the α_2 receptors, which are abundantly distributed in the microvasculature and associate with vasodilation when located on endothelial cells.⁸²

Chronic dysregulation of autonomic function is characterized by an imbalance between the sympathetic and parasympathetic systems. Autonomic dysfunction involves increased sympathetic activation, with increased vasoconstriction, and/or damage of the autonomic nerve fibers that innervate the heart and blood vessels, including the microvasculature. In general, adrenergic-derived vasoconstriction is relevant in clinical situations in which normal non-neural vasodilator mechanisms are impaired (i.e. dyslipidaemia, diabetes).⁸³ The role of the parasympathetic innervation in the coronary

microcirculation is debatable, even though activation of vascular endothelial M₃ receptors results in increased NO synthesis and subsequent vasodilation.⁸⁴

Impaired autonomic function resulting in vasoconstriction is associated to CMD after AMI and/or coronary reperfusion procedures. In this regards, an early study showed that left ventricular dysfunction (secondary to transient PCI-induced ischemia) accompanied by increased coronary resistance and diffuse vasoconstriction was abolished by α -blockers, supporting the hypothesis that neural mechanisms elicit microvascular dysfunction.⁸⁵

7. Assessment of the coronary microcirculation

Adequate methods for direct visualization *in vivo* of the coronary microcirculation both in human and animal are presently lacking. Assessment of CMD is performed with different diagnostic modalities, including non-invasive (positron emission tomography, myocardial contrast echocardiography, cardiac computed tomography, and cardiac magnetic resonance) and invasive (coronary angiography, Doppler-flow wire, coronary flow reserve, and index of microvascular resistance) techniques, each one carrying specific strengths and weaknesses^{86,87} (See **Supplementary Table 3 for specifications**).

The ESC has proposed an assessment procedure to reach a more precise identification and diagnosis of microvascular angina (Figure 5). In fact, preliminary data show that impaired microcirculatory conductance and arteriolar dysregulation may benefit from different treatments.¹

Similarly, assessment of CMD in animal models basically include *in vivo* non-invasive imaging, invasive catheter based physiological coronary testing and *ex vivo* investigation based on contemporary histology. Hemodynamic indexes, such CFR, IMR, and zero-flow pressure, have been proved to be the most reliable to assess coronary microcirculation in swine, a good preclinical model of heart disease.⁸⁸

8. Coronary microvascular ischemia: the size of the problem

In the last two decades, with the increasing widespread use of imaging techniques for assessing myocardial perfusion, there has been a growing awareness of the fact that many patients suffer myocardial ischemia and myocardial infarction, without any atherosclerotic coronary lesion limiting blood flow.

In the literature, the rate of such patients varies widely, since it depends on the definition used for “non-obstructive CAD”. Some analyses refer to smooth coronary arteries or coronary arteries with minimal lumen irregularities (<20% lumen stenosis),^{10,89} others (most studies) to the absence of a significant ($\geq 50\%$) coronary artery lumen stenosis,⁹⁰⁻⁹³ while others to the absence of any severe (>70%) lumen stenosis.^{94,95} Moreover, the estimated prevalence is influenced by gender, clinical syndrome (stable or acute), ethnicity and other characteristics of the study population, for example veterans with respect to the general population.^{94,95}

INOCA: The rate of patients with lumen stenosis <50% in any major coronary arteries, which is the most common definition for INOCA, is approximately 47% in women (from 34 to 65%) and 30% in men (from 14 to 36%).^{10,89,96} **Supplementary Table 1** shows data of 10 large cohort studies with angiograms of more than 530,000 patients. One out of two women with chest pain of suspected cardiac origin has non-obstructive CAD compared to one out of three men. However, the concept of INOCA as a woman’s disease is an oversimplification, since the absolute number of women and men with non-obstructive CAD is similar.

MINOCA and acute coronary syndromes: Compared to chronic coronary syndrome, a lower but still important percentage of patients with non-obstructive CAD is documented in ACS.^{30,90-93,97} **Supplementary Table 2** reports data of 30 international cohorts. The incidence of non-obstructive CAD, defined by lumen stenosis <50% in any major coronary artery, ranges from 2.2 to 21.8%, being influenced by changes in the definition of AMI over the time (i.e. incorporation of high sensitivity troponins) and by the clinical context: MINOCA, ST-segment elevation myocardial infarction (STEMI), non-STEMI, non ST-elevation ACS, or unstable angina. The incidence is generally lower in STEMI (3%, range 2.2-11.6%) than in NSTEMI (10%, range 8.1-17%) or non ST-elevation ACS (10%, range 9.2-12.1%). MINOCA has a mean rate of 8% (range

2.9-13.8%), with most of the patients NSTEMI. The disease affects both sexes, but women appear more vulnerable and the rate of women with MINOCA (or other ACSs) is from 2 to 3 times higher than that of men.

No-Reflow Phenomenon: This is a relatively common complication, especially in the setting of STEMI.^{41,98-100} The size of the problem depends on its definition. Based on the use of TIMI grade flow, the occurrence seems to be restricted to less than 5% of the population undergoing primary angioplasty. However, evaluation of myocardial rather than merely epicardial perfusion reveals a much higher prevalence. Thus, despite optimal restoration of TIMI 3 grade blood flow, suboptimal reperfusion is still observed in 20-40% of the STEMI population.¹⁰⁰ Factors associated with impaired reperfusion – despite optimal epicardial reperfusion – are advanced age, diabetes, late presentation (>4h), preprocedural low TIMI flow, and advanced Killip class at presentation.¹⁰¹⁻¹⁰⁶

Recently, it has been shown that there is a significant sex difference in post-PCI slow flow, being women more affected than men.³⁷

Prognostic relevance of microvascular ischemia

For a long time, ischemia with non-obstructive CAD was considered a clinical condition affecting almost exclusively women and not associated with any serious risk of adverse cardiac events. However, several studies published in the early 2000s showed controversial results.^{107,108} Al Suwaidi et al. reported 4.8% of death, 2.4% of AMI and, 14% of coronary revascularization during 2 years of observation, in 42 stable patients with coronary lumen stenosis <40% and severe endothelial dysfunction.¹⁰⁸ Subsequent analysis of a large cohort of patients with ACS and <50% lumen stenosis, revealing a rate >12% for major cardiovascular events (death, AMI, stroke, revascularization or severe angina) at 1-year,¹⁰⁷ focused attention on the unfavourable prognosis of these patients (women and men) and stimulated further studies in the acute and stable clinical context.

INOCA: The Women's Ischemia Syndrome Evaluation study (WISE) was designed to assess the outcome of women undergoing cardiac catheterization for suspected angina. A major strength of the study was the use of a blinded core-lab for evaluating angiograms by quantitative coronary analysis; a weakness was the enrolment of women only. Sharaf et al. observed that cardiovascular death or AMI at 10 years had occurred

in 6.7%, 12.8% and 25.9% of women with no, non-obstructive (>20% but <50% lumen stenosis), and obstructive CAD, respectively.¹⁰⁹ Data from a Danish cohort of 11,223 patients with stable angina also showed an association between non-obstructive CAD and major adverse cardiovascular events. This study found a 1.52-fold and 1.85-fold increased risk of MACE for patients with normal coronary arteries and non-obstructive CAD, respectively, compared to healthy individuals.¹⁰ Furthermore, an increase in risk – regardless of sex – was observed in association with the degree of CAD (normal, non-obstructive and obstructive). Reported mortality rates from 2.4% at 2.5 years,¹⁰ to 5.3% at 6.5 years.¹¹⁰

MINOCA: Several studies reported that the outcome of AMI patients with non-obstructive CAD was not favourable as previously thought. Thus, in-hospital death occurs in up to 2% of MINOCA patients,^{30,92,111} while at 1-year mortality ranges from 3.1% -6.4 %, ^{92,112} rising to 10.9% at 5-year.⁹² Data from the literature also indicate that during hospital stay, patients with MINOCA often experience left ventricular failure,^{93,111,113} while major cardiovascular events (death, AMI, hospital readmission, revascularization or stroke) occur in 12%-14% of these patients at 6-12 months.^{90,107}

Vasospastic Angina: Perfusion-imaging studies provide evidence that patients with chest pain may actually have reduced CFR in the absence of flow-limiting coronary stenoses. However, impaired CFR does not necessarily imply endothelial vascular dysfunction because the defect can reside in endothelium-independent responses. Abnormalities in coronary microvascular responses to adenosine (which is principally endothelium-independent) do not appear to be predictive of adverse outcomes. Conversely, when impaired CFR is accompanied by coronary endothelial dysfunction, as assessed by acetylcholine testing, it predicts an unfavourable outcome. A number of studies have addressed the long-term prognostic value of endothelial function testing in patients with non-obstructive CAD and demonstrate that endothelial dysfunction is associated with significantly more adverse cardiovascular events.^{66,108,114} An investigation of 42 women demonstrated that 30% of those women with chest pain, “normal” angiograms, and severe endothelial dysfunction developed CAD during a 10-year follow-up.⁶⁷ Another study in 163 patients with “normal” coronary angiography and abnormal endothelial function showed an overall event rate of 14% at 48 months. Outcome data included increased rates of cardiovascular death (10% of adverse events), AMI, congestive heart failure, or stroke (21% of adverse events), and angina,

revascularization, or other vascular events (69% of adverse events).¹¹⁴ Loss of endothelium-dependent **vasodilation** in response to acetylcholine is an early sign of vascular injury ultimately leading to atherosclerosis, and may thus account for the prognostic value of acetylcholine testing.

No-reflow Phenomenon: Several studies – using different techniques – have evaluated the prognostic impact of myocardial no-reflow (below TIMI 3 flow), demonstrating an impact on cardiac remodeling and survival.^{37,115–119} Among 1548 STEMI patients, impaired reperfusion was associated with a 3-fold increase in the relative risk of mortality at 1- year follow-up⁹⁹ and similar results were observed at 5 years follow-up.¹¹⁶ The prognostic impact of impaired reperfusion on survival and left ventricular remodeling has been demonstrated using CME¹¹⁷ or CMR.¹¹⁸

Preventive and conventional strategies

To date, no randomized trials comparing therapies for the reduction of adverse cardiac events in patients with angina and “normal” coronary arteries have been conducted, and available adverse outcome data are limited to cohort studies. However, the presence of non-obstructive CAD at coronary angiography is increasingly recognized as pathological. Lifestyle changes and risk factor management should be considered essential components of any therapeutic approach for patients with traditional cardiac risk factors, with or without evidence of coronary atherosclerosis. For patients with cardiac chest pain and evidence of ischemia by perfusion testing, beta-blockers may reduce myocardial oxygen consumption and symptoms. Aggressive therapy with statins and angiotensin-converting enzyme (ACE) inhibitors should be used for patients who qualify for this treatment by the presence of cardiac risk factors and have evidence of atherosclerosis or evidence of endothelial dysfunction (**Figure 6**).

Research into novel treatments for CMD is an unmet clinical need. One novel strategy, not yet proven, has been to inhibit Rho-kinase in order to ameliorate CMD and vasospastic angina¹²⁰. Additionally, therapeutic targeting of perivascular adipose tissue to stimulate the production of vasoactive, vasorelaxing factors such as adiponectin¹²¹ or hydrogen sulphide¹²² could be of benefit.

Platelet-inhibitors: Data on the use of platelet inhibitors including aspirin for the treatment of CMD are insufficiently established to provide clinical recommendations. Nonetheless, in patients referred for CAD diagnostic assessment, documentation of CMD often justifies the use of aspirin since typically these patients have also non-obstructive CAD.¹²³ Ticagrelor, may protect the microcirculation through its adenosine-mediated vasodilator effects.^{44,45} Clinical studies investigating its protective role on the microcirculation are ongoing.

ACE-inhibitors: Inhibition of the renin-angiotensin axis elicits beneficial vasoprotective effects by improving microcirculatory function and coronary flow reserve.¹²⁴ ACE-inhibitors and statin improve endothelial dysfunction, may counteract oxidative stress, and may be of benefit in patients with CMD.¹²⁵ Data from EMMACE-2 registry⁹¹ showed that ACE-inhibitor therapy was associated with reduced 6-month incidence of mortality in patients presenting with ACS and non-obstructive CAD. This study however, has limitations, including its observational nature, lack of randomization, short duration of follow-up, and inability to assess myocardial infarction, heart failure, and stroke as outcomes.

Statins: Beyond reducing cholesterol levels, statins have inhibitory effects on vascular inflammation, upregulate eNOS and enhance vascular NO bioavailability. In patients with normal angiograms and inducible myocardial ischemia several small randomized trials and case-control studies have shown positive effects of statins on exercise tolerance, exercise-induced reversible perfusion defects,^{125–128} endothelial function,^{125–127} and quality of life.¹²⁵ In the setting of ACS, statin therapy prior to revascularization improves coronary microvascular perfusion in patients with and without STEMI, as assessed by contrast echocardiography in a 30 days follow-up period.¹²⁹ The analysis of 8 TIMI trials reported lower rate of death or reinfarction at 30-days in patients with NSTEMI-ACS and non-obstructive CAD on statin treatment.¹³⁰ Moreover, during long-term (>4 years) follow-up, data from SWEDEHEART, which enrolled 9136 patients with MINOCA surviving at least 30 days after the index event, confirmed the beneficial effects of statins on major cardiovascular events (all-cause mortality, myocardial infarction, ischemic stroke and heart failure).⁹⁷

Beta-blockers: Beta-blockers have been shown to be highly effective for reduction of chest pain episodes during daily life. There are several potential mechanisms by which

beta-blockers may act in reducing chest pain recurrences as reducing myocardial oxygen demand and inducing endothelium-dependent vasodilation.¹³¹ **Exercise training, which increase parasympathetic activity, has shown to be of benefit, indicating the impact of adrenergic modulation.**¹³² **In patients with variant angina beta-blockers should be avoided; whereas calcium-channel blockers are the first line treatment.**

Nitrates: Nitrates are effective in inducing vasodilation and relieve angina symptoms, but without consistent findings for patients with non-obstructive CAD.¹³³

L-arginine: Long-term, 6-month supplementation of L-arginine, the precursor of NO, improved endothelial function, coronary blood flow and symptoms in patients with non-obstructive CAD, but not CFR.¹³⁴

9. Concluding remarks

CMD is an intricate part of ischemic heart disease. It arises from changes in both microvascular function and structure and is most strongly associated with endothelial dysfunction. The dominant underlying functional mechanisms include a loss of NO bioavailability and increased ET-1 vasoconstrictor tone. The structural mechanisms identified to date include inward arteriolar remodeling and vascular rarefaction. Together these increase minimal coronary vascular resistance and reduce maximum myocardial perfusion. As a result, coronary flow reserve decreases promoting myocardial ischemia during increases in myocardial oxygen demand. With increasing sophistication to assess coronary physiology in humans, it has become apparent that CMD is highly prevalent and developing therapeutic interventions to reverse functional abnormalities in coronary resistance vessel control could become an important approach to treat ischemic heart disease.

10. Recommendations and Future Perspectives

- **Both structural and functional defects contribute and interact to cause a progressive impairment of coronary microvascular blood flow. There is a**

need to clarify the relative impact of each one in the diverse forms of presentation of CMD.

- There are no therapeutic strategies focused on specifically treating CMD and the microvasculature. There is an urgent need to identify novel and specific targets for therapy.
- There is a need to better understand the anatomic and physiologic features that predispose a higher burden of microvascular dysfunction in women.
- There is a need of new research to improve CMD assessment and the diagnostic methodologies now available.
- The management of patients with non-obstructive CAD and ACS or inducible myocardial ischemia does not currently have a consensus strategy. These patients should be studied for the evaluation of endothelial and coronary microvascular dysfunction, since they may influence outcome.
- Clinical studies and double-blind randomized clinical trials in patients with non-obstructive disease specifically designed to assess the effect of conventional and novel anti-ischemic therapies are required.

Funding

This work was supported by: Spanish Ministry of Economy and Competitiveness of Science [PNS2016-76819-R to L.B] and the Institute of Health Carlos III, ISCIII [FIS PI16/01915 to T.P, Red Terapia Celular TerCel- RD16/0011/0018 to LB] cofounded by FEDER "Una Manera de Hacer Europa". Secretaria d'Universitats i Recerca del Departament d'Empresa i Coneixement de la Generalitat de Catalunya [2017 SGR 1480]. Grant from the Netherlands Cardiovascular Research Initiative (CVON2014-11), an initiative with financial support from the Dutch Heart Foundation to D.J.D. Scientific Excellence Program 2019, University of Physical Education, Innovation and Technology Ministry, Hungary TUDFO/51757/2019-ITM (AK), Higher Education Institutional Excellence Program, Semmelweis University and the National Bionika Program ED_17-1-2017-0009, Hungary (AK).

Conflict of Interest

None declared.

Legends to Figures

Figure 1.- Coronary microvascular dysfunction in non-obstructive and obstructive coronary artery disease. Abbreviations: ET-1, endothelin-1; VSMC, vascular smooth muscle cell; ETA, endothelin receptor A; ETB, endothelin receptor B; RAAS, renin angiotensin aldosterone system; NO, nitric oxide; ROS, reactive oxygen species; EC, endothelial cell; COX, cyclooxygenase.

Figure 2.- Microvascular dysfunction as underlying pathophysiological mechanism for acute coronary syndromes.

Figure 3.- Pathophysiological mechanisms of microvascular dysfunction associated to the non-reflow phenomenon

Figure 4.- Microvascular response to risk factors. ROS: reactive oxygen species; NO nitric oxide

Figure 5.- Invasive assessment of coronary physiology and intravascular imaging for patients with non-obstructive CAD.

Abbreviations: Ach:acetylcholine; ACS:acute coronary syndromes; CAD:coronary artery disease, CFR:coronary flow reserve; ER:ergonovine; HMR:hyperemic microvascular resistance index; IMR:index of microcirculatory resistance; IVUS:intravascular ultrasounds; MI:myocardial infarction; MINOCA:myocardial infarction with non-obstructed coronary arteries; OCT:optical coherence tomography; OMT:optimal medical therapy; SCAD:spontaneous coronary artery dissection

***Contraindications to provocative coronary testing include:** emergent coronary angiography in patients with ACS/MI, pregnancy, severe hypertension, severe left ventricular dysfunction, heart failure (New York Heart Association class III or IV), moderate/severe aortic stenosis, left main coronary stenosis >50%, multivessel CAD, spontaneous spasm during angiography; uncontrolled ventricular arrhythmia, renal insufficiency, severe bronchial asthma; use of isosorbide dinitrate (shortly before)..

Figure 6.- Secondary prevention strategies in patients with microvascular dysfunction or MINOCA. (1) Contraindications to beta-blockers include: decompensated heart failure, symptomatic bradycardia and atrioventricular blocks, hypotension, asthma acute bronchospasm. In case of AMI all the aforementioned with the inclusion of Killip Classes III (acute pulmonary edema) and IV (cardiogenic shock). (2) Contraindications to ACE inhibitors or ARBs include: acute and worsening renal failure, advanced chronic kidney disease, bilateral renal artery stenosis, hyperkalemia, hypotension, history of angioedema and hereditary or idiopathic angioedema, pregnancy

due to teratogenicity. *Abbreviations:* AMI:acute myocardial infarction; OMT:optimal medical therapy; MINOCA:myocardial infarction with non-obstructive coronary arteries; LVEF:left ventricular ejection fraction.

References

1. Knuuti J, Wijns W, Saraste A, Capodanno D, Barbato E, Funck-Brentano C, Prescott E, Storey RF, Deaton C, Cuisset T, Agewall S, Dickstein K, Edvardsen T, Escaned J, Gersh BJ, Svitil P, Gilard M, Hasdai D, Hatala R, Mahfoud F, Masip J, Muneretto C, Valgimigli M, Achenbach S, Bax JJ, Neumann F-J, Sechtem U, Banning AP, Bonaros N, Bueno H, et al. 2019 ESC Guidelines for the diagnosis and management of chronic coronary syndromes. *Eur Heart J* Oxford University Press (OUP); 2019;
2. Ong P, Camici PG, Beltrame JF, Crea F, Shimokawa H, Sechtem U, Kaski JC, Bairey Merz CN, Coronary Vasomotion Disorders International Study Group (COVADIS). International standardization of diagnostic criteria for microvascular angina. *Int J Cardiol* 2018;**250**:16–20.
3. Ibanez B, James S, Agewall S, Antunes MJ, Bucciarelli-Ducci C, Bueno H, Caforio ALP, Crea F, Goudevenos JA, Halvorsen S, Hindricks G, Kastrati A, Lenzen MJ, Prescott E, Roffi M, Valgimigli M, Varenhorst C, Vranckx P, Widimský P, Collet J-P, Kristensen SD, Aboyans V, Baumbach A, Bugiardini R, Coman IM, Delgado V, Fitzsimons D, Gaemperli O, Gershlick AH, Gielen S, et al. 2017 ESC Guidelines for the management of acute myocardial infarction in patients presenting with ST-segment elevation. *Eur Heart J* 2018;**39**:119–177.
4. Agewall S, Beltrame JF, Reynolds HR, Niessner A, Rosano G, Caforio ALP, Caterina R De, Zimarino M, Roffi M, Kjeldsen K, Atar D, Kaski JC, Sechtem U, Tornvall P. ESC working group position paper on myocardial infarction with non-obstructive coronary arteries. *Eur. Heart J.* Oxford University Press; 2017. p. 143–153.
5. Crea F, Camici PG, Bairey Merz CN. Coronary microvascular dysfunction: an update. *Eur Heart J* 2014;**35**:1101–1111.
6. Bugiardini R, Bairey Merz CN. Angina with “normal” coronary arteries: a changing philosophy. *JAMA* 2005;**293**:477–484.
7. Herscovici R, Sedlak T, Wei J, Pepine CJ, Handberg E, Bairey Merz CN. Ischemia and No Obstructive Coronary Artery Disease (INOCA): What Is the Risk? *J Am Heart Assoc* 2018;**7**:e008868.
8. Levy BI, Heusch G, Camici PG. The many faces of myocardial ischaemia and angina. *Cardiovasc Res* 2019;**115**:1460–1470.
9. Bradley SM, Maddox TM, Stanislawski MA, O’Donnell CI, Grunwald GK, Tsai TT, Ho PM, Peterson ED, Rumsfeld JS. Normal coronary rates for elective angiography in the Veterans Affairs Healthcare System: insights from the VA CART program (veterans affairs clinical assessment reporting and tracking). *J Am Coll Cardiol* 2014;**63**:417–426.
10. Jespersen L, Hvelplund A, Abildstrøm SZ, Pedersen F, Galatius S, Madsen JK, Jørgensen E, Kelbæk H, Prescott E. Stable angina pectoris with no obstructive coronary artery disease is associated with increased risks of major adverse cardiovascular events. *Eur Heart J* 2012;**33**:734–744.
11. Badimon L, Bugiardini R, Cenko E, Cubedo J, Dorobantu M, Duncker DJ, Estruch R, Milicic D, Tousoulis D, Vasiljevic Z, Vilahur G, Wit C de, Koller A. Position paper of the European Society of Cardiology-working group of coronary pathophysiology and microcirculation: obesity and heart disease. *Eur Heart J* 2017;**38**:1951–1958.
12. Bender SB, Beer VJ de, Tharp DL, Bowles DK, Laughlin MH, Merkus D,

- Duncker DJ. Severe familial hypercholesterolemia impairs the regulation of coronary blood flow and oxygen supply during exercise. *Basic Res Cardiol* 2016;**111**:61.
13. Berwick ZC, Dick GM, Tune JD. Heart of the matter: coronary dysfunction in metabolic syndrome. *J Mol Cell Cardiol* 2012;**52**:848–856.
 14. Ford TJ, Rocchiccioli P, Good R, McEntegart M, Eteiba H, Watkins S, Shaukat A, Lindsay M, Robertson K, Hood S, Yui E, Sidik N, Harvey A, Montezano AC, Beattie E, Haddow L, Oldroyd KG, Touyz RM, Berry C. Systemic microvascular dysfunction in microvascular and vasospastic angina. *Eur Heart J* 2018;**39**:4086–4097.
 15. Grassi G, Seravalle G, Quarti-Trevano F, Scopelliti F, Dell’Oro R, Bolla G, Mancina G. Excessive sympathetic activation in heart failure with obesity and metabolic syndrome: characteristics and mechanisms. *Hypertens (Dallas, Tex 1979)* 2007;**49**:535–541.
 16. Kachur S, Morera R, Schutter A De, Lavie CJ. Cardiovascular Risk in Patients with Prehypertension and the Metabolic Syndrome. *Curr Hypertens Rep* 2018;**20**:15.
 17. Bagi Z, Feher A, Cassuto J. Microvascular responsiveness in obesity: implications for therapeutic intervention. *Br J Pharmacol* 2012;**165**:544–560.
 18. Li Z-L, Woollard JR, Ebrahimi B, Crane JA, Jordan KL, Lerman A, Wang S-M, Lerman LO. Transition from obesity to metabolic syndrome is associated with altered myocardial autophagy and apoptosis. *Arterioscler Thromb Vasc Biol* 2012;**32**:1132–1141.
 19. Trask AJ, Katz PS, Kelly AP, Galantowicz ML, Cismowski MJ, West TA, Neeb ZP, Berwick ZC, Goodwill AG, Alloosh M, Tune JD, Sturek M, Lucchesi PA. Dynamic micro- and macrovascular remodeling in coronary circulation of obese Ossabaw pigs with metabolic syndrome. *J Appl Physiol* 2012;**113**:1128–1140.
 20. Duncker DJ, Koller A, Merkus D, Canty JM. Regulation of coronary blood flow in health and ischemic heart disease. *Prog Cardiovasc Dis* 2015;**57**:409–422.
 21. Johnson NP, Kirkeeide RL, Gould KL. Is discordance of coronary flow reserve and fractional flow reserve due to methodology or clinically relevant coronary pathophysiology? *JACC Cardiovasc Imaging* 2012;**5**:193–202.
 22. Shimoni S, Frangogiannis NG, Aggeli CJ, Shan K, Quinones MA, Espada R, Letsou G V., Lawrie GM, Winters WL, Reardon MJ, Zoghbi WA. Microvascular Structural Correlates of Myocardial Contrast Echocardiography in Patients With Coronary Artery Disease and Left Ventricular Dysfunction. *Circulation* 2002;**106**:950–956.
 23. Kelly RF, Cabrera JA, Ziemba EA, Crampton M, Anderson LB, McFalls EO, Ward HB. Continued depression of maximal oxygen consumption and mitochondrial proteomic expression despite successful coronary artery bypass grafting in a swine model of hibernation. *J Thorac Cardiovasc Surg* 2011;**141**:261–268.
 24. Vilahur G, Oñate B, Cubedo J, Béjar MT, Arderiu G, Peña E, Casaní L, Gutiérrez M, Capdevila A, Pons-Lladó G, Carreras F, Hidalgo A, Badimon L. Allogenic adipose-derived stem cell therapy overcomes ischemia-induced microvessel rarefaction in the myocardium: systems biology study. *Stem Cell Res Ther* 2017;**8**:52.
 25. Heusch G, Deussen A. The effects of cardiac sympathetic nerve stimulation on perfusion of stenotic coronary arteries in the dog. *Circ Res* 1983;**53**:8–15.
 26. Sorop O, Merkus D, Beer VJ de, Houweling B, Pisteia A, McFalls EO, Boomsma

- F, Beusekom HM van, Giessen WJ van der, VanBavel E, Duncker DJ. Functional and structural adaptations of coronary microvessels distal to a chronic coronary artery stenosis. *Circ Res* 2008;**102**:795–803.
27. Beyer AM, Zinkevich N, Miller B, Liu Y, Wittenburg AL, Mitchell M, Galdieri R, Sorokin A, Gutterman DD. Transition in the mechanism of flow-mediated dilation with aging and development of coronary artery disease. *Basic Res Cardiol* 2017;**112**:5.
 28. Akker J van den, Schoorl MJC, Bakker ENTP, vanBavel E. Small Artery Remodeling: Current Concepts and Questions. *J Vasc Res* 2010;**47**:183–202.
 29. Pasupathy S, Air T, Dreyer RP, Tavella R, Beltrame JF. Systematic Review of Patients Presenting With Suspected Myocardial Infarction and Nonobstructive Coronary Arteries. *Circulation* 2015;**131**:861–870.
 30. Smilowitz NR, Mahajan AM, Roe MT, Hellkamp AS, Chiswell K, Gulati M, Reynolds HR. Mortality of Myocardial Infarction by Sex, Age, and Obstructive Coronary Artery Disease Status in the ACTION Registry-GWTG (Acute Coronary Treatment and Intervention Outcomes Network Registry-Get With the Guidelines). *Circ Cardiovasc Qual Outcomes* 2017;**10**:e003443.
 31. Safdar B, Spatz ES, Dreyer RP, Beltrame JF, Lichtman JH, Spertus JA, Reynolds HR, Geda M, Bueno H, Dziura JD, Krumholz HM, D’Onofrio G. Presentation, Clinical Profile, and Prognosis of Young Patients With Myocardial Infarction With Nonobstructive Coronary Arteries (MINOCA): Results From the VIRGO Study. *J Am Heart Assoc* 2018;**7**.
 32. Thygesen K, Alpert JS, Jaffe AS, Chaitman BR, Bax JJ, Morrow DA, White HD, Executive Group on behalf of the Joint European Society of Cardiology (ESC)/American College of Cardiology (ACC)/American Heart Association (AHA)/World Heart Federation (WHF) Task Force for the Universal Definition of Myocardial Infarction. Fourth Universal Definition of Myocardial Infarction (2018). *Circulation* 2018;**138**:e618–e651.
 33. Montone RA, Niccoli G, Fracassi F, Russo M, Gurgoglione F, Cammà G, Lanza GA, Crea F. Patients with acute myocardial infarction and non-obstructive coronary arteries: safety and prognostic relevance of invasive coronary provocative tests. *Eur Heart J* 2018;**39**:91–98.
 34. Vita A De, Manfredonia L, Lamendola P, Villano A, Ravenna SE, Bisignani A, Niccoli G, Lanza GA, Crea F. Coronary microvascular dysfunction in patients with acute coronary syndrome and no obstructive coronary artery disease. *Clin Res Cardiol* 2019;
 35. Lerman A, Holmes DR, Herrmann J, Gersh BJ. Microcirculatory dysfunction in ST-elevation myocardial infarction: cause, consequence, or both? *Eur Heart J* 2007;**28**:788–797.
 36. Krug A, Mesnil de Rochemont Du, Korb G. Blood supply of the myocardium after temporary coronary occlusion. *Circ Res* 1966;**19**:57–62.
 37. Cenko E, Schaar M van der, Yoon J, Kedev S, Valvukis M, Vasiljevic Z, Ašanin M, Miličić D, Manfrini O, Badimon L, Bugiardini R. Sex-Specific Treatment Effects After Primary Percutaneous Intervention: A Study on Coronary Blood Flow and Delay to Hospital Presentation. *J Am Heart Assoc* 2019;**8**:e011190.
 38. Jaffe R, Charron T, Puley G, Dick A, Strauss BH. Microvascular Obstruction and the No-Reflow Phenomenon After Percutaneous Coronary Intervention. *Circulation* 2008;**117**:3152–3156.
 39. Kali A, Cokic I, Tang R, Dohnalkova A, Kovarik L, Yang H-J, Kumar A, Prato FS, Wood JC, Underhill D, Marbán E, Dharmakumar R. Persistent Microvascular

- Obstruction After Myocardial Infarction Culminates in the Confluence of Ferric Iron Oxide Crystals, Proinflammatory Burden, and Adverse Remodeling. *Circ Cardiovasc Imaging* 2016;**9**.
40. Waha S de, Patel MR, Granger CB, Ohman EM, Maehara A, Eitel I, Ben-Yehuda O, Jenkins P, Thiele H, Stone GW. Relationship between microvascular obstruction and adverse events following primary percutaneous coronary intervention for ST-segment elevation myocardial infarction: an individual patient data pooled analysis from seven randomized trials. *Eur Heart J* 2017;**38**:3502–3510.
 41. Cenko E, Ricci B, Kedev S, Kalpak O, Călmăc L, Vasiljevic Z, Knežević B, Dilic M, Miličić D, Manfrini O, Koller A, Dorobantu M, Badimon L, Bugiardini R. The no-reflow phenomenon in the young and in the elderly. *Int J Cardiol* 2016;**222**:1122–1128.
 42. Waard GA de, Hollander MR, Teunissen PFA, Jansen MF, Eerenberg ES, Beek AM, Marques KM, Ven PM van de, Garrelts IM, Danser AHJ, Duncker DJ, Royen N van. Changes in Coronary Blood Flow After Acute Myocardial Infarction: Insights From a Patient Study and an Experimental Porcine Model. *JACC Cardiovasc Interv* 2016;**9**:602–613.
 43. Kloner RA, King KS, Harrington MG. No-reflow phenomenon in the heart and brain. *Am J Physiol Heart Circ Physiol* 2018;**315**:H550–H562.
 44. Vilahur G, Gutiérrez M, Casani L, Varela L, Capdevila A, Pons-Lladó G, Carreras F, Carlsson L, Hidalgo A, Badimon L. Protective Effects of Ticagrelor on Myocardial Injury After Infarction. *Circulation* 2016;**134**:1708–1719.
 45. Vilahur G, Gutiérrez M, Casani L, Lambert C, Mendieta G, Ben-Aicha S, Capdevila A, Pons-Lladó G, Carreras F, Carlsson L, Hidalgo A, Badimon L. P2Y12 antagonists and cardiac repair post-myocardial infarction: global and regional heart function analysis and molecular assessments in pigs. *Cardiovasc Res* 2018;**114**:1860–1870.
 46. Hess CN, Kaltenbach LA, Doll JA, Cohen DJ, Peterson ED, Wang TY. Race and Sex Differences in Post-Myocardial Infarction Angina Frequency and Risk of 1-Year Unplanned Rehospitalization. *Circulation* 2017;**135**:532–543.
 47. Maria GL De, Cuculi F, Patel N, Dawkins S, Fahrni G, Kassimis G, Choudhury RP, Forfar JC, Prendergast BD, Channon KM, Kharbanda RK, Banning AP. How does coronary stent implantation impact on the status of the microcirculation during primary percutaneous coronary intervention in patients with ST-elevation myocardial infarction? *Eur Heart J* 2015;**36**:3165–3177.
 48. Borlotti A, Jerosch-Herold M, Liu D, Vilianni D, Bracco A, Alkhalil M, Maria GL De, OxAMI Study Investigators OS, Channon KM, Banning AP, Choudhury RP, Neubauer S, Kharbanda RK, Dall'Armellina E. Acute Microvascular Impairment Post-Reperfused STEMI Is Reversible and Has Additional Clinical Predictive Value: A CMR OxAMI Study. *JACC Cardiovasc Imaging* Elsevier; 2019;**12**:1783–1793.
 49. Niccoli G, Montone RA, Lanza GA, Crea F. Angina after percutaneous coronary intervention: The need for precision medicine. *Int J Cardiol* 2017;**248**:14–19.
 50. Heusch G. Coronary microvascular obstruction: the new frontier in cardioprotection. *Basic Res Cardiol* 2019;**114**:45.
 51. Wasserman DH, Wang TJ, Brown NJ. The Vasculature in Prediabetes. *Circ Res* 2018;**122**:1135–1150.
 52. Hinkel R, Howe A, Renner S, Ng J, Lee S, Klett K, Kaczmarek V, Moretti A, Laugwitz K-L, Skroblin P, Mayr M, Milting H, Dendorfer A, Reichart B, Wolf

- E, Kupatt C. Diabetes Mellitus–Induced Microvascular Destabilization in the Myocardium. *J Am Coll Cardiol* 2017;**69**:131–143.
53. Mazurek T, Zhang L, Zalewski A, Mannion JD, Diehl JT, Arafat H, Sarov-Blat L, O’Brien S, Keiper EA, Johnson AG, Martin J, Goldstein BJ, Shi Y. Human epicardial adipose tissue is a source of inflammatory mediators. *Circulation* 2003;**108**:2460–2466.
 54. Triantafyllou A, Anyfanti P, Triantafyllou G, Zabulis X, Aslanidis S, Douma S. Impaired metabolic profile is a predictor of capillary rarefaction in a population of hypertensive and normotensive individuals. *J Am Soc Hypertens* 2016;**10**:640–646.
 55. Shah NR, Charytan DM, Murthy VL, Skali Lami H, Veeranna V, Cheezum MK, Taqueti VR, Kato T, Foster CR, Hainer J, Gaber M, Klein J, Dorbala S, Blankstein R, Carli MF Di. Prognostic Value of Coronary Flow Reserve in Patients with Dialysis-Dependent ESRD. *J Am Soc Nephrol* 2016;**27**:1823–1829.
 56. Bagi Z, Feher A, Cassuto J, Akula K, Labinskyy N, Kaley G, Koller A. Increased availability of angiotensin AT 1 receptors leads to sustained arterial constriction to angiotensin II in diabetes - role for Rho-kinase activation. *Br J Pharmacol* 2011;**163**:1059–1068.
 57. Alonso R, Mata P, Andres R De, Villacastin BP, Martínez-González J, Badimon L. Sustained long-term improvement of arterial endothelial function in heterozygous familial hypercholesterolemia patients treated with simvastatin. *Atherosclerosis* 2001;**157**:423–429.
 58. Reindl M, Reinstadler SJ, Feistritzer H-J, Theurl M, Basic D, Eigler C, Holzkecht M, Mair J, Mayr A, Klug G, Metzler B. Relation of Low-Density Lipoprotein Cholesterol With Microvascular Injury and Clinical Outcome in Revascularized ST-Elevation Myocardial Infarction. *J Am Heart Assoc* 2017;**6**.
 59. Hein TW, Liao JC, Kuo L. ox LDL specifically impairs endothelium-dependent, NO-mediated dilation of coronary arterioles. *Am J Physiol Circ Physiol* 2000;**278**:H175–H183.
 60. Ricci B, Cenko E, Vasiljevic Z, Stankovic G, Kedev S, Kalpak O, Vavlukis M, Zdravkovic M, Hinic S, Milicic D, Manfrini O, Badimon L, Bugiardini R. Acute Coronary Syndrome: The Risk to Young Women. *J Am Heart Assoc* 2017;**6**.
 61. Cenko E, Yoon J, Kedev S, Stankovic G, Vasiljevic Z, Krljanac G, Kalpak O, Ricci B, Milicic D, Manfrini O, Schaar M van der, Badimon L, Bugiardini R. Sex Differences in Outcomes After STEMI: Effect Modification by Treatment Strategy and Age. *JAMA Intern Med* 2018;**178**:632–639.
 62. Koller A. Perspectives: Microvascular endothelial dysfunction and gender. *Eur Heart J Suppl* 2014;**16**:A16–A19.
 63. Vaccarino V, Badimon L, Corti R, Wit C de, Dorobantu M, Hall A, Koller A, Marzilli M, Pries A, Bugiardini R, Working Group on Coronary Pathophysiology and Microcirculation. Ischaemic heart disease in women: are there sex differences in pathophysiology and risk factors? Position paper from the working group on coronary pathophysiology and microcirculation of the European Society of Cardiology. *Cardiovasc Res* 2011;**90**:9–17.
 64. Maseri A, Severi S, Nes MD, L’Abbate A, Chierchia S, Marzilli M, Ballestra AM, Parodi O, Biagini A, Distanti A. "Variant" angina: one aspect of a continuous spectrum of vasospastic myocardial ischemia. Pathogenetic mechanisms, estimated incidence and clinical and coronary arteriographic findings in 138 patients. *Am J Cardiol* 1978;**42**:1019–1035.
 65. Bugiardini R, Pozzati A, Ottani F, Morgagni GL, Puddu P. Vasotonic angina: a

- spectrum of ischemic syndromes involving functional abnormalities of the epicardial and microvascular coronary circulation. *J Am Coll Cardiol* 1993;**22**:417–425.
66. Halcox JPJ, Schenke WH, Zalos G, Mincemoyer R, Prasad A, Waclawiw MA, Nour KRA, Quyyumi AA. Prognostic Value of Coronary Vascular Endothelial Dysfunction. *Circulation* 2002;**106**:653–658.
 67. Bugiardini R, Manfrini O, Pizzi C, Fontana F, Morgagni G. Endothelial function predicts future development of coronary artery disease: a study of women with chest pain and normal coronary angiograms. *Circulation* 2004;**109**:2518–2523.
 68. Szekeres M, Nádasy GL, Dörnyei G, Szénási A, Koller A. Remodeling of wall mechanics and the myogenic mechanism of rat intramural coronary arterioles in response to a short-term daily exercise program: Role of endothelial factors. *J Vasc Res S. Karger AG*; 2018;**55**:87–97.
 69. Siasos G, Tsigkou V, Zaromytidou M, Sara JD, Varshney A, Coskun AU, Lerman A, Stone PH. Role of local coronary blood flow patterns and shear stress on the development of microvascular and epicardial endothelial dysfunction and coronary plaque. *Curr Opin Cardiol* 2018;**33**:638–644.
 70. Hodges GJ, Stewart DG, Davison PJ, Cheung SS. The role of shear stress on cutaneous microvascular endothelial function in humans. *Eur J Appl Physiol* Springer Verlag; 2017;**117**:2457–2468.
 71. Mundi S, Massaro M, Scoditti E, Carluccio MA, Hinsbergh VWM van, Iruela-Arispe ML, Caterina R De. Endothelial permeability, LDL deposition, and cardiovascular risk factors—a review. *Cardiovasc Res* 2018;**114**:35–52.
 72. Förstermann U, Xia N, Li H. Roles of Vascular Oxidative Stress and Nitric Oxide in the Pathogenesis of Atherosclerosis. *Circ Res* 2017;**120**:713–735.
 73. Osto E, Matter CM, Kouroedov A, Malinski T, Bachschmid M, Camici GG, Kilic U, Stallmach T, Boren J, Iliceto S, Lüscher TF, Cosentino F. c-Jun N-terminal kinase 2 deficiency protects against hypercholesterolemia-induced endothelial dysfunction and oxidative stress. *Circulation* 2008;**118**:2073–2080.
 74. Gutterman DD, Chabowski DS, Kadlec AO, Durand MJ, Freed JK, Ait-Aissa K, Beyer AM. The Human Microcirculation. *Circ Res* 2016;**118**:157–172.
 75. Niccoli G, Scalone G, Lerman A, Crea F. Coronary microvascular obstruction in acute myocardial infarction. *Eur Heart J* 2016;**37**:1024–1033.
 76. Stokes KY, Granger DN. Platelets: a critical link between inflammation and microvascular dysfunction. *J Physiol* 2012;**590**:1023–1034.
 77. TAILOR A, COOPER D, GRANGER DN. Platelet–Vessel Wall Interactions in the Microcirculation. *Microcirculation* 2005;**12**:275–285.
 78. Gavins FNE, Li G, Russell J, Perretti M, Granger DN. Microvascular thrombosis and CD40/CD40L signaling. *J Thromb Haemost* 2011;**9**:574–581.
 79. Ge L, Zhou X, Ji W-J, Lu R-Y, Zhang Y, Zhang Y-D, Ma Y-Q, Zhao J-H, Li Y-M. Neutrophil extracellular traps in ischemia-reperfusion injury-induced myocardial no-reflow: therapeutic potential of DNase-based reperfusion strategy. *Am J Physiol Heart Circ Physiol* 2015;**308**:H500-9.
 80. Pries AR, Badimon L, Bugiardini R, Camici PG, Dorobantu M, Duncker DJ, Escaned J, Koller A, Piek JJ, Wit C de. Coronary vascular regulation, remodelling, and collateralization: mechanisms and clinical implications on behalf of the working group on coronary pathophysiology and microcirculation. *Eur Heart J* 2015;**36**:3134–3146.
 81. Heusch G, Baumgart D, Camici P, Chilian W, Gregorini L, Hess O, Indolfi C, Rimoldi O. α -Adrenergic Coronary Vasoconstriction and Myocardial Ischemia in

- Humans. *Circulation* 2000;**101**:689–694.
82. Heusch G. The paradox of α -adrenergic coronary vasoconstriction revisited. *J Mol Cell Cardiol* 2011;**51**:16–23.
 83. Yun J-S, Park Y-M, Cha S-A, Ahn Y-B, Ko S-H. Progression of cardiovascular autonomic neuropathy and cardiovascular disease in type 2 diabetes. *Cardiovasc Diabetol* 2018;**17**:109.
 84. Miyashita T, Takeishi Y, Takahashi H, Miyamoto T, Fujii S, Yoshimura T, Tomoike H, Kato S, Kubota I. Comparison of Nitric Oxide Production in Response to Carbachol Between Macrovascular and Microvascular Cardiac Endothelial Cells. *Circ J* 2002;**66**:511–511.
 85. Gregorini L, Marco J, Palombo C, Kozàková M, Anguissola GB, Cassagneau B, Bernies M, Distante A, Marco I, Fajadet J, Zanchetti A. Postischemic left ventricular dysfunction is abolished by alpha-adrenergic blocking agents. *J Am Coll Cardiol* 1998;**31**:992–1001.
 86. Feher A, Sinusas AJ. Quantitative Assessment of Coronary Microvascular Function: Dynamic Single-Photon Emission Computed Tomography, Positron Emission Tomography, Ultrasound, Computed Tomography, and Magnetic Resonance Imaging. *Circ Cardiovasc Imaging* 2017;**10**:e006427.
 87. Camici PG, d’Amati G, Rimoldi O. Coronary microvascular dysfunction: mechanisms and functional assessment. *Nat Rev Cardiol* 2015;**12**:48–62.
 88. Zhang Z, Takarada S, Molloy S. Assessment of coronary microcirculation in a swine animal model. *Am J Physiol Heart Circ Physiol* 2011;**301**:H402-8.
 89. Sharaf BL, Pepine CJ, Kerensky RA, Reis SE, Reichek N, Rogers WJ, Sopko G, Kelsey SF, Holubkov R, Olson M, Miele NJ, Williams DO, Merz CNB. Detailed angiographic analysis of women with suspected ischemic chest pain (pilot phase data from the NHLBI-sponsored Women’s Ischemia Syndrome Evaluation [WISE] study angiographic core laboratory). *Am J Cardiol* 2001;**87**:937–941.
 90. Dey S, Flather MD, Devlin G, Brieger D, Gurfinkel EP, Steg PG, Fitzgerald G, Jackson EA, Eagle KA, Global Registry of Acute Coronary Events investigators. Sex-related differences in the presentation, treatment and outcomes among patients with acute coronary syndromes: the Global Registry of Acute Coronary Events. *Heart* 2009;**95**:20–26.
 91. Manfrini O, Morrell C, Das R, Barth JH, Hall AS, Gale CP, Cenko E, Bugiardini R, Evaluation of Methods and Management of Acute Coronary Events Study Group. Effects of angiotensin-converting enzyme inhibitors and beta blockers on clinical outcomes in patients with and without coronary artery obstructions at angiography (from a Register-Based Cohort Study on Acute Coronary Syndromes). *Am J Cardiol* 2014;**113**:1628–1633.
 92. Baine KR, Welsh RC, Alemayehu W, Westerhout CM, Traboulsi D, Anderson T, Brass N, Armstrong PW, Kaul P. Population-level incidence and outcomes of myocardial infarction with non-obstructive coronary arteries (MINOCA): Insights from the Alberta contemporary acute coronary syndrome patients invasive treatment strategies (COAPT) study. *Int J Cardiol* 2018;**264**:12–17.
 93. Gehrie ER, Reynolds HR, Chen AY, Neelon BH, Roe MT, Gibler WB, Ohman EM, Newby LK, Peterson ED, Hochman JS. Characterization and outcomes of women and men with non-ST-segment elevation myocardial infarction and nonobstructive coronary artery disease: results from the Can Rapid Risk Stratification of Unstable Angina Patients Suppress Adverse Outcomes with Early . *Am Heart J* 2009;**158**:688–694.
 94. Shaw LJ, Shaw RE, Merz CNB, Brindis RG, Klein LW, Nallamothu B, Douglas

- PS, Krone RJ, McKay CR, Block PC, Hewitt K, Weintraub WS, Peterson ED, American College of Cardiology-National Cardiovascular Data Registry Investigators. Impact of ethnicity and gender differences on angiographic coronary artery disease prevalence and in-hospital mortality in the American College of Cardiology-National Cardiovascular Data Registry. *Circulation* 2008;**117**:1787–1801.
95. Maddox TM, Stanislawski MA, Grunwald GK, Bradley SM, Ho PM, Tsai TT, Patel MR, Sandhu A, Valle J, Magid DJ, Leon B, Bhatt DL, Fihn SD, Rumsfeld JS. Nonobstructive coronary artery disease and risk of myocardial infarction. *JAMA* 2014;**312**:1754–1763.
 96. Johnston N, Jönelid B, Christersson C, Kero T, Renlund H, Schenck-Gustafsson K, Lagerqvist B. Effect of Gender on Patients With ST-Elevation and Non-ST-Elevation Myocardial Infarction Without Obstructive Coronary Artery Disease. *Am J Cardiol* 2015;**115**:1661–1666.
 97. Lindahl B, Baron T, Erlinge D, Hadziosmanovic N, Nordenskjöld A, Gard A, Jernberg T. Medical Therapy for Secondary Prevention and Long-Term Outcome in Patients With Myocardial Infarction With Nonobstructive Coronary Artery Disease. *Circulation* 2017;**135**:1481–1489.
 98. Gibson CM, Cannon CP, Daley WL, Dodge JT, Alexander B, Marble SJ, McCabe CH, Raymond L, Fortin T, Poole WK, Braunwald E. TIMI frame count: a quantitative method of assessing coronary artery flow. *Circulation* 1996;**93**:879–888.
 99. Luca G De, 't Hof AWJ van, Ottervanger JP, Hoorntje JCA, Gosselink ATM, Dambrink J-HE, Zijlstra F, Boer M-J de, Suryapranata H. Unsuccessful reperfusion in patients with ST-segment elevation myocardial infarction treated by primary angioplasty. *Am Heart J* 2005;**150**:557–562.
 100. Gibson CM, Cannon CP, Murphy SA, Ryan KA, Mesley R, Marble SJ, McCabe CH, Werf F Van De, Braunwald E. Relationship of TIMI myocardial perfusion grade to mortality after administration of thrombolytic drugs. *Circulation* 2000;**101**:125–130.
 101. Luca G De, 't Hof AWJ van, Boer M-J de, Hoorntje JCA, Gosselink ATM, Dambrink J-HE, Ottervanger JP, Zijlstra F, Suryapranata H. Impaired myocardial perfusion is a major explanation of the poor outcome observed in patients undergoing primary angioplasty for ST-segment-elevation myocardial infarction and signs of heart failure. *Circulation* 2004;**109**:958–961.
 102. DELUCA G, 't Hof AWJ van, Boer M-J de, Ottervanger JP, Hoorntje JCA, Gosselink ATM, Dambrink J-HE, Zijlstra F, Suryapranata H. Time-to-treatment significantly affects the extent of ST-segment resolution and myocardial blush in patients with acute myocardial infarction treated by primary angioplasty. *Eur Heart J* 2004;**25**:1009–1013.
 103. Timmer JR, Horst ICC van der, Luca G de, Ottervanger JP, Hoorntje JCA, Boer M-J de, Suryapranata H, Dambrink J-HE, Gosselink M, Zijlstra F, 't Hof AWJ van, Zwolle Myocardial Infarction Study Group. Comparison of myocardial perfusion after successful primary percutaneous coronary intervention in patients with ST-elevation myocardial infarction with versus without diabetes mellitus. *Am J Cardiol* 2005;**95**:1375–1377.
 104. Luca G De, Ernst N, van't Hof AWJ, Ottervanger JP, Hoorntje JCA, Dambrink J-HE, Gosselink ATM, Boer M-J de, Suryapranata H. Preprocedural Thrombolysis in Myocardial Infarction (TIMI) flow significantly affects the extent of ST-segment resolution and myocardial blush in patients with acute anterior

- myocardial infarction treated by primary angioplasty. *Am Heart J* 2005;**150**:827–831.
105. Iwakura K, Ito H, Kawano S, Shintani Y, Yamamoto K, Kato A, Ikushima M, Tanaka K, Kitakaze M, Hori M, Higashino Y, Fujii K. Predictive factors for development of the no-reflow phenomenon in patients with reperfused anterior wall acute myocardial infarction. *J Am Coll Cardiol* 2001;**38**:472–477.
 106. Ndrepepa G, Tiroch K, Keta D, Fusaro M, Seyfarth M, Pache J, Mehilli J, Schömig A, Kastrati A. Predictive factors and impact of no reflow after primary percutaneous coronary intervention in patients with acute myocardial infarction. *Circ Cardiovasc Interv* 2010;**3**:27–33.
 107. Bugiardini R, Manfrini O, Ferrari GM De. Unanswered Questions for Management of Acute Coronary Syndrome. *Arch Intern Med* 2006;**166**:1391.
 108. Suwaidi J Al, Hamasaki S, Higano ST, Nishimura RA, Holmes DR, Lerman A. Long-Term Follow-Up of Patients With Mild Coronary Artery Disease and Endothelial Dysfunction. *Circulation* 2000;**101**:948–954.
 109. Sharaf B, Wood T, Shaw L, Johnson BD, Kelsey S, Anderson RD, Pepine CJ, Bairey Merz CN. Adverse outcomes among women presenting with signs and symptoms of ischemia and no obstructive coronary artery disease: findings from the National Heart, Lung, and Blood Institute-sponsored Women’s Ischemia Syndrome Evaluation (WISE) angiographic core lab. *Am Heart J* 2013;**166**:134–141.
 110. Kissel CK, Chen G, Southern DA, Galbraith PD, Anderson TJ. Impact of clinical presentation and presence of coronary sclerosis on long-term outcome of patients with non-obstructive coronary artery disease. *BMC Cardiovasc Disord* 2018;**18**:173.
 111. André R, Elbaz M, Simon T, Khalife K, Lim P, Ennezat P-V, Coste P, Breton H Le, Bataille V, Ferrières J, Danchin N. Prevalence, clinical profile and 3-year survival of acute myocardial infarction patients with and without obstructive coronary lesions: the FAST-MI 2005 registry. *Int J Cardiol* 2014;**172**:e247-9.
 112. Larsen AI, Galbraith PD, Ghali WA, Norris CM, Graham MM, Knudtson ML, APPROACH Investigators. Characteristics and outcomes of patients with acute myocardial infarction and angiographically normal coronary arteries. *Am J Cardiol* 2005;**95**:261–263.
 113. Patel MR, Chen AY, Peterson ED, Newby LK, Pollack C V., Brindis RG, Gibson CM, Kleiman NS, Saucedo JF, Bhatt DL, Gibler WB, Ohman EM, Harrington RA, Roe MT. Prevalence, predictors, and outcomes of patients with non-ST-segment elevation myocardial infarction and insignificant coronary artery disease: Results from the Can Rapid risk stratification of Unstable angina patients Suppress ADverse outcomes with Early. *Am Heart J* 2006;**152**:641–647.
 114. Mering GO von, Arant CB, Wessel TR, McGorray SP, Bairey Merz CN, Sharaf BL, Smith KM, Olson MB, Johnson BD, Sopko G, Handberg E, Pepine CJ, Kerensky RA, National Heart, Lung, and Blood Institute. Abnormal coronary vasomotion as a prognostic indicator of cardiovascular events in women: results from the National Heart, Lung, and Blood Institute-Sponsored Women’s Ischemia Syndrome Evaluation (WISE). *Circulation* 2004;**109**:722–725.
 115. Luca G De, Maas AC, ’t Hof AWJ van, Ottervanger JP, Hoorntje JCA, Gosselink ATM, Dambrink J-HE, Boer M-J de, Suryapranata H. Impact of ST-segment depression resolution on mortality after successful mechanical reperfusion in patients with ST-segment elevation acute myocardial infarction. *Am J Cardiol* 2005;**95**:234–236.

116. Ndrepepa G, Tiroch K, Fusaro M, Keta D, Seyfarth M, Byrne RA, Pache J, Alger P, Mehilli J, Schömig A, Kastrati A. 5-year prognostic value of no-reflow phenomenon after percutaneous coronary intervention in patients with acute myocardial infarction. *J Am Coll Cardiol* 2010;**55**:2383–2389.
117. Bolognese L, Carrabba N, Parodi G, Santoro GM, Buonamici P, Cerisano G, Antoniucci D. Impact of Microvascular Dysfunction on Left Ventricular Remodeling and Long-Term Clinical Outcome After Primary Coronary Angioplasty for Acute Myocardial Infarction. *Circulation* 2004;**109**:1121–1126.
118. Wu KC, Zerhouni EA, Judd RM, Lugo-Olivieri CH, Barouch LA, Schulman SP, Blumenthal RS, Lima JAC. Prognostic Significance of Microvascular Obstruction by Magnetic Resonance Imaging in Patients With Acute Myocardial Infarction. *Circulation* 1998;**97**:765–772.
119. Niccoli G, Montone RA, Ibanez B, Thiele H, Crea F, Heusch G, Bulluck H, Hausenloy DJ, Berry C, Stiermaier T, Camici PG, Eitel I. Optimized Treatment of ST-Elevation Myocardial Infarction. *Circ Res NLM (Medline)*; 2019;**125**:245–258.
120. Ohyama K, Matsumoto Y, Takanami K, Ota H, Nishimiya K, Sugisawa J, Tsuchiya S, Amamizu H, Uzuka H, Suda A, Shindo T, Kikuchi Y, Hao K, Tsuburaya R, Takahashi J, Miyata S, Sakata Y, Takase K, Shimokawa H. Coronary Adventitial and Perivascular Adipose Tissue Inflammation in Patients With Vasospastic Angina. *J Am Coll Cardiol* 2018;**71**:414–425.
121. Antonopoulos AS, Margaritis M, Verheule S, Recalde A, Sanna F, Herdman L, Psarros C, Nasrallah H, Coutinho P, Akoumianakis I, Brewer AC, Sayeed R, Krasopoulos G, Petrou M, Tarun A, Tousoulis D, Shah AM, Casadei B, Channon KM, Antoniades C. Mutual Regulation of Epicardial Adipose Tissue and Myocardial Redox State by PPAR- γ /Adiponectin Signalling. *Circ Res* 2016;**118**:842–855.
122. Wójcicka G, Jamroz-Wiśniewska A, Atanasova P, Chaldakov GN, Chylińska-Kula B, Bełtowski J. Differential effects of statins on endogenous H₂S formation in perivascular adipose tissue. *Pharmacol Res* 2011;**63**:68–76.
123. Samim A, Nugent L, Mehta PK, Shufelt C, Bairey Merz CN. Treatment of Angina and Microvascular Coronary Dysfunction. *Curr Treat Options Cardiovasc Med* 2010;**12**:355–364.
124. Hiller K-H, Ruile P, Kraus G, Bauer WR, Waller C. Tissue ACE inhibition improves microcirculation in remote myocardium after coronary stenosis: MR imaging study in rats. *Microvasc Res* 2010;**80**:484–490.
125. Pizzi C, Manfrini O, Fontana F, Bugiardini R. Angiotensin-converting enzyme inhibitors and 3-hydroxy-3-methylglutaryl coenzyme A reductase in cardiac Syndrome X: role of superoxide dismutase activity. *Circulation* 2004;**109**:53–58.
126. Kayikcioglu M. Benefits of statin treatment in cardiac syndrome-X. *Eur Heart J* 2003;**24**:1999–2005.
127. Fábíán E, Varga A, Picano E, Vajo Z, Rónaszéki A, Csanády M. Effect of simvastatin on endothelial function in cardiac syndrome X patients. *Am J Cardiol* 2004;**94**:652–655.
128. Manfrini O, Pizzi C, Morgagni G, Fontana F, Bugiardini R. Effect of pravastatin on myocardial perfusion after percutaneous transluminal coronary angioplasty. *Am J Cardiol* 2004;**93**:1391–1393, A6.
129. Paraskevaidis IA, Iliodromitis EK, Ikonomidis I, Rallidis L, Hamodraka E, Parissis J, Andoniadis A, Tzortzis S, Anastasiou-Nana M. The effect of acute administration of statins on coronary microcirculation during the pre-

- revascularization period in patients with myocardial infraction. *Atherosclerosis* 2012;**223**:184–189.
130. Ferrari GM De, Fox KA, White JA, Giugliano RP, Tricoci P, Reynolds HR, Hochman JS, Gibson CM, Thérourx P, Harrington RA, Werf F Van de, White HD, Califf RM, Newby LK. Outcomes among non-ST-segment elevation acute coronary syndromes patients with no angiographically obstructive coronary artery disease: observations from 37,101 patients. *Eur Hear J Acute Cardiovasc Care* 2014;**3**:37–45.
 131. Kalinowski L, Dobrucki LW, Szczepanska-Konkel M, Jankowski M, Martyniec L, Angielski S, Malinski T. Third-generation beta-blockers stimulate nitric oxide release from endothelial cells through ATP efflux: a novel mechanism for antihypertensive action. *Circulation* 2003;**107**:2747–2752.
 132. Eriksson BE, Tyni-Lennè R, Svedenhag J, Hallin R, Jensen-Urstad K, Jensen-Urstad M, Bergman K, Selvén C. Physical training in Syndrome X: physical training counteracts deconditioning and pain in Syndrome X. *J Am Coll Cardiol* 2000;**36**:1619–1625.
 133. Bugiardini R, Borghi A, Pozzati A, Ottani F, Morgagni GL, Puddu P. The paradox of nitrates in patients with angina pectoris and angiographically normal coronary arteries. *Am J Cardiol* 1993;**72**:343–347.
 134. Lerman A, Burnett JC, Higano ST, McKinley LJ, Holmes DR. Long-term l - Arginine Supplementation Improves Small-Vessel Coronary Endothelial Function in Humans. *Circulation* 1998;**97**:2123–2128.

Figure(s)

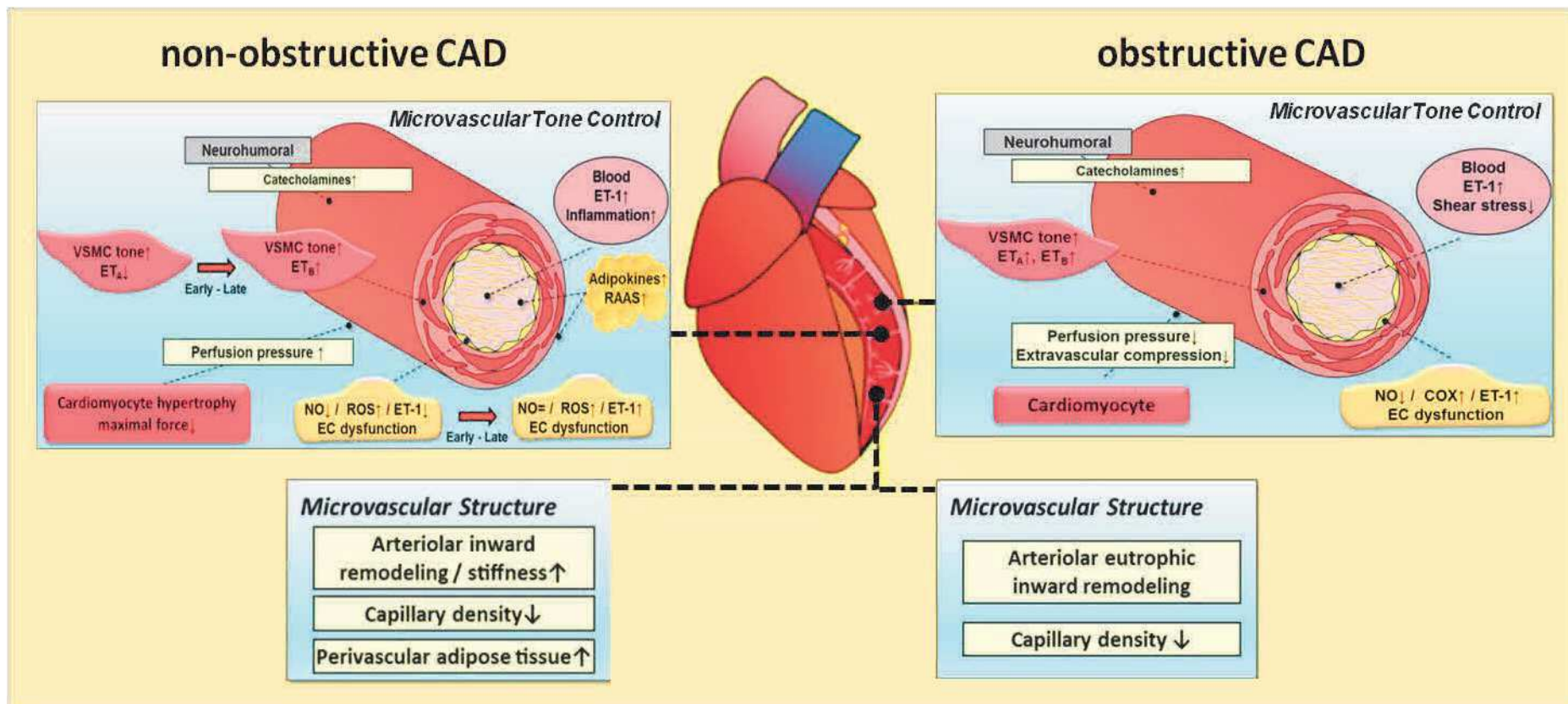


Figure 1

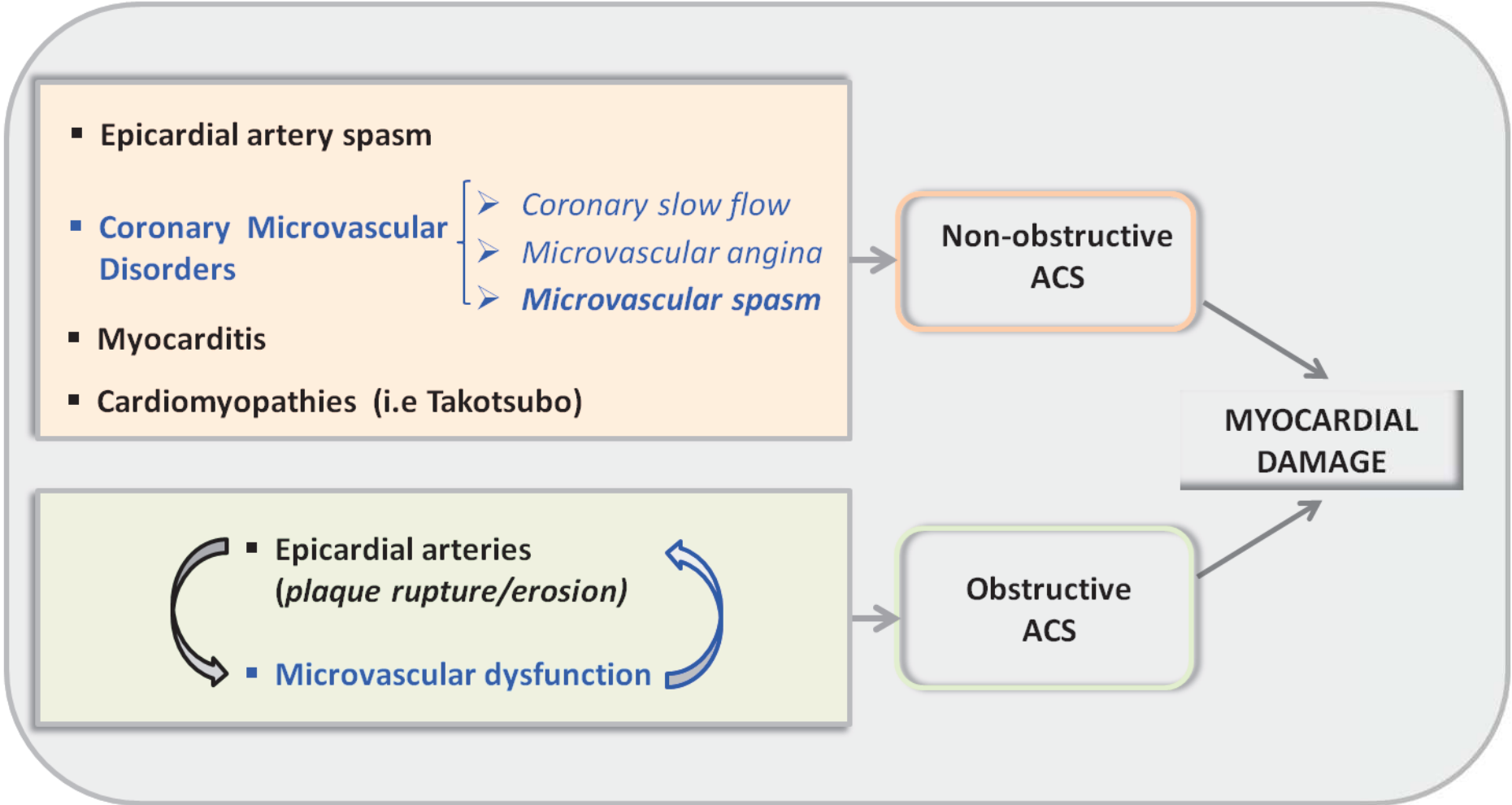


Figure 2

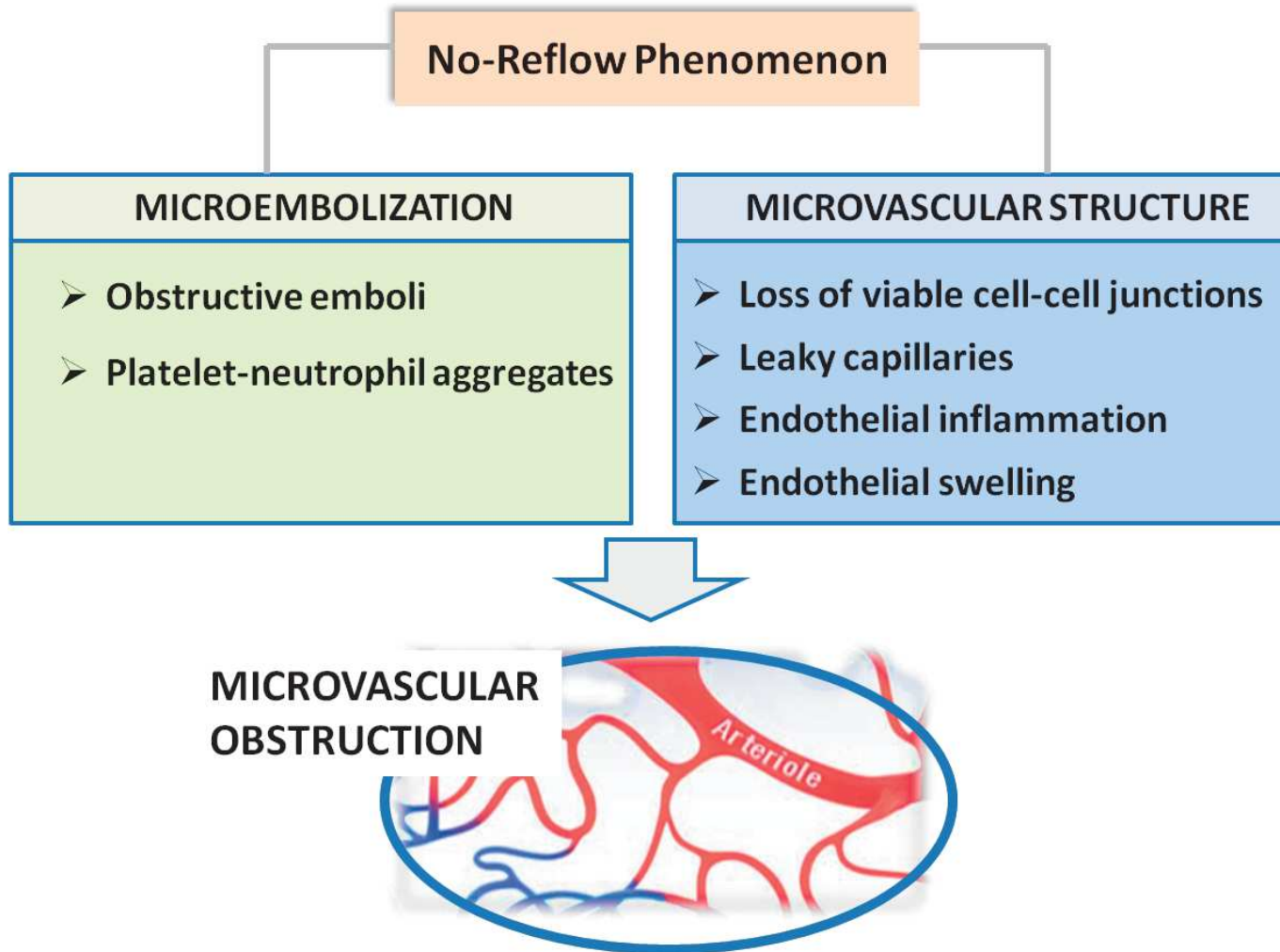


Figure 3

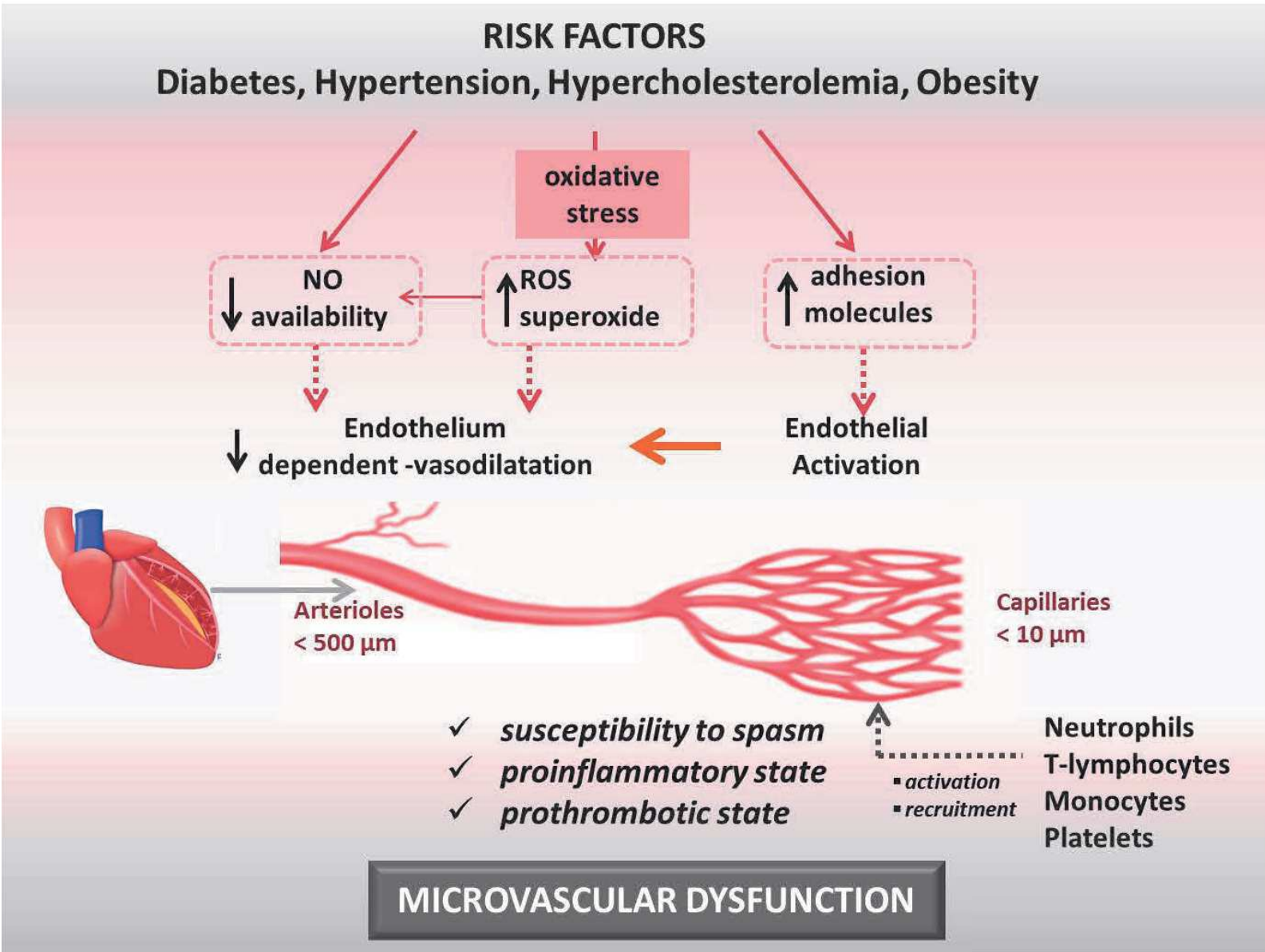


Figure 4

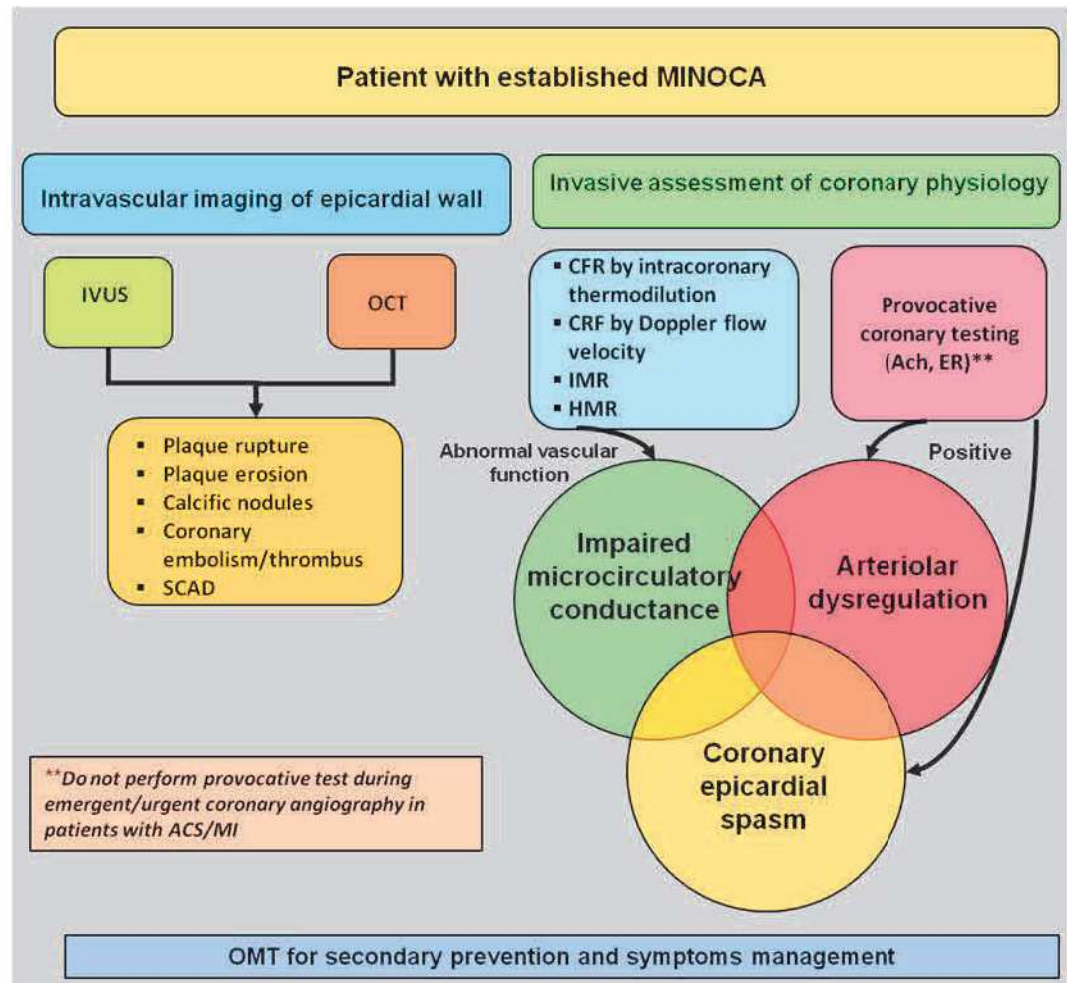
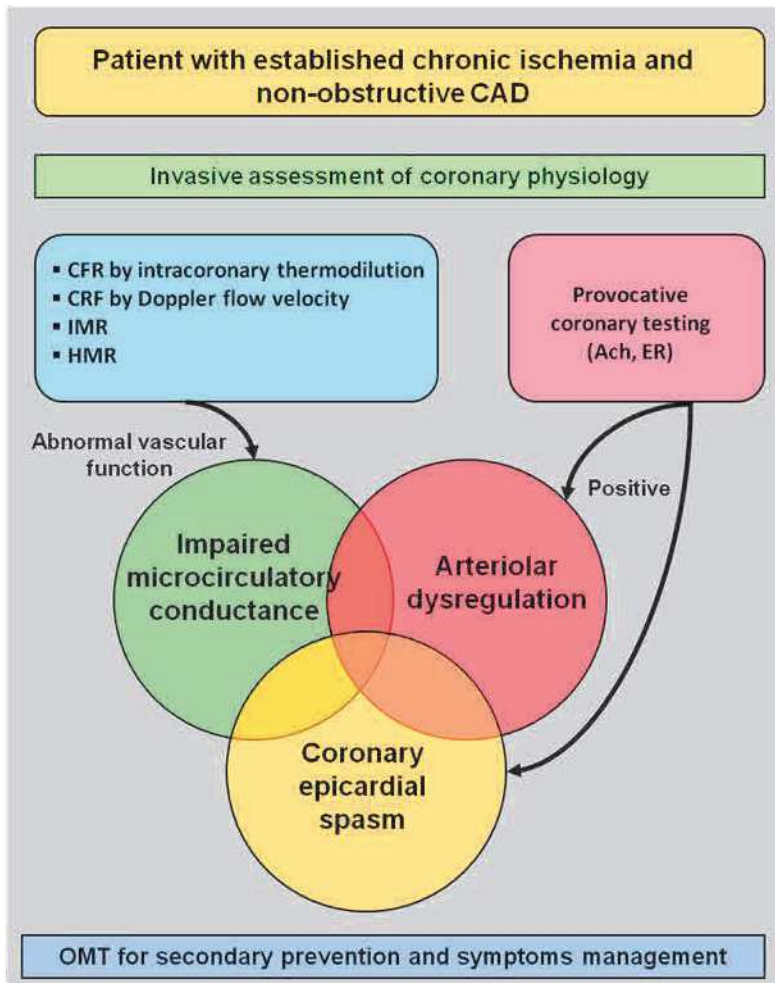


Figure 5

OMT for secondary prevention

Beta-blockers

- Initiate oral administration if no contraindications
- Avoid in variant angina*
- Counteract proischemic effects
- Reduce myocardial oxygen demand
- Reduce adrenergic tone
- Endothelium-dependent vasodilator
- Reduce cardiovascular events and mortality
- In AMI reduces infarct size

ACE inhibitors or ARBs

- Initiate if no contraindications (Consider ARBs if ACE-inhibitor allergy or intolerance)
- Improve microcirculatory function and CFR
- Improve endothelial dysfunction and may counteract oxidative stress
- Prevent myocardial remodeling
- Reduce cardiovascular events and mortality
- Largest benefit if reduced LVEF

• Statins

- Inhibitory effects on vascular inflammation
- Upregulation of eNOS and enhanced vascular NO bioavailability
- Improve endothelial function
- Reduce cardiovascular events and mortality

Antiplatelet therapy

- Initiate aspirin for secondary prevention at low dose (81–100 mg)
- Reduces mortality
- Ticagrelor** may have protective effects through adenosine-mediated vasodilation

*Calcium-channel blockers are the first line treatment in patients with variant angina

**Clinical studies investigating the protective role of ticagrelor on the microcirculation are ongoing

Figure 6

Supplementary Tables

ESC Working Group on Coronary Pathophysiology & Microcirculation Position paper on 'Coronary Microvascular Dysfunction in Cardiovascular Disease'

Short title: Coronary Microvascular Dysfunction

Teresa Padro^{1#}, Olivia Manfrini^{2#}, Raffaele Bugiardini², John Canty³, Edina Cenko², Giuseppe De Luca⁴, Dirk J Duncker⁵, Etto C Eringa⁶, Akos Koller^{7,8}, Dimitris Tousoulis⁹, Danijela Trifunovic¹⁰, Marija Vavlukis¹¹, Cor de Wit¹², Lina Badimon^{1*}

Both authors have contributed equally

Authors affiliations:

¹ Cardiovascular Program-ICCC, Research Institute Hospital Santa Creu i Sant Pau; CiberCV-Institute Carlos III; UAB, Barcelona, Spain

² Department of Experimental, Diagnostic and Specialty Medicine, University of Bologna, Bologna, Italy

³ Division of Cardiology, Department of Medicine, State University of New York at Buffalo, Buffalo, New York, USA

⁴ Maggiore della Carità Hospital, Eastern Piedmont University A. Avogadro, Novara, Italy

⁵ Division of Experimental Cardiology, Department of Cardiology, Thoraxcenter, Cardiovascular Research Institute COEUR, Erasmus University Medical Center, Rotterdam, The Netherlands

⁶ Department of Physiology, Amsterdam Cardiovascular Science Institute, Amsterdam University Medical Centres, Amsterdam, The Netherlands

⁷ Department of Translational Medicine, Faculty of Medicine, Semmelweis University, Budapest, Hungary

⁸ Department of Physiology, New York Medical College, Valhalla, NY, USA

⁹ First Department of Cardiology, Hippokraton Hospital, University of Athens Medical School, Athens, Greece

¹⁰Department of Cardiology, University Clinical Center of Serbia; and School of Medicine, University of Belgrade, Belgrade, Serbia

¹¹University Clinic of Cardiology, Faculty of Medicine, University Ss' Cyril and Methodius, Skopje, Macedonia

¹²Institut für Physiologie, Universität zu Lübeck and Deutsches Zentrum für Herz-Kreislauf-Forschung (DZHK), Lübeck, Germany

Address for corresponding author (*):

Prof. Lina Badimon

Cardiovascular-Program ICCC;

Research Institute Hospital Santa Creu i Sant Pau

Sant Antoni M^a Claret 167, 08025 Barcelona, Spain.

Phone: +34.935565882.

Fax: +34.935565559.

E-mail: lbadimon@santpau.cat

Supplementary Table 1.- Prevalance of non-obstructive CAD and “normal” angiograms in large cohorts of stable patients

References	Registry	Period	Patients with non-obstructive angiograms			Patients with “normal” angiograms		“normal” (% lumen stenosis)
			All n/N (%)	Women n/N (%)	Men n/N (%)	Woman n/N (%)	Men n/N (%)	
0 to <50% lumen stenosis in any major coronary arteries								
Sharaf BL et al. ¹	WISE (USA) §	1996-99	184/323 (57.0)	184/323 (57.0)	---	110/ 323 (34)	---	0 to <20 §
Gulati M et al. ²	WISE (USA) §	1997-99	540/936 (57.7)	540/936 (57.7)	---	318/936 (34)	---	0 to <20 §
Jespersen et al. ³	Danish registry *	1998-09	5183/11223 (46.2)	3073/4711 (65.2)	2110/6512 (32.4)	2253/4711(48)	1226/6512 (19)	0 †
Sedlak TL et al. ⁴	Canadian registry †	1999-02	3087/13695 (22.5)	1757/4184 (42.0)	1330/9511 (14.0)	1275/4184 (31)	804/9511 (8.5)	0 *
Sharaf BL et al. ⁵	WISE (USA) §	2001-07	567/917 (61.8)	567/917 (61.8)	---	339/917 (37)	--	0 to <20 §
Johnston et al. ⁶	SCAAR (Sweden) †	2005-10	11127/31742 (35.1)	4517/13116 (34.4)	6610/18626 (35.5)			
Kissel et al. ⁷	SCAAR (Sweden) †	1995-12	7478/18384 (40.7)	3517/6031 (58.3)	3961/12353 (32.1)			
Total number of observations - n/N (%)			28166 / 77220 (36.5)	14155 / 30218 (46.8)	14011 / 47002 (29.8)			
[% min - % max]			[22.6 – 61.8]	[34.4-65.2]	[14.0-35.5]			
0 to <70% lumen stenosis in any major coronary arteries								
Shaw LJ et al. ⁸	NCDR (USA) †	2000-02	155305/375896 (41.3)	86186/168332 (51.2)	69119/207564 (33.3)			
Maddox TM et al. ⁹	US Veterans (USA) *	2007-12	16775/37674 (44.5)	1310/1666 (78.6)	15465/36008 (42.9)	935/1666 (56)	7456/36008 (21)	0 to <20 *
Davis MB et al. ¹⁰	US Veterans (USA) *	2007-12	23696/48441 (48.9)	1689/2132 (79.2)	22007/46309 (47.5)	1065/2132 (50)	8534/46309 (18)	0 to <20 *
Total number of observations - n/N (%)			195776 /462011 (42.4)	89185/172130 (51.8)	106591/ 289881 (36.8)			
[% min - % max]			[41.3-48.9]	[51.2-79.2]	[33-48]			

§ quantitative coronary analysis; † visual analysis; * method used for angiograms evaluation not available

NCDR: National Cardiovascular Data Registry; SCAAR: Swedish Coronary Angiography and Angioplasty Registry; WISE: Women’s Ischemia Syndrome Evaluation.

Supplementary Table 2.- Prevalence of non-obstructive CAD (<50% lumen stenosis in any major coronary artery) in large cohorts of ACS patients

Reference	Registry/Trial and/or Country	Disease	Period	All n / N (%)	Women n / N (%)	Men n / N (%)	n-W in n-All (%)
Ramanath ¹¹	Michigan, USA	ACS	1999-04	123 / 2264 (5.4)	66 / 734 (9.0)	57 / 1530 (3.7)	53.7
Germing ¹²	Germany	ACS	1996-00	76 / 897 (8.5)	22 / 236 (9.3)	54 / 661 (8.2)	28.9
Dey ¹³	GRACE	ACS	1999-06	2031 / 26755 (7.6)	921 / 7638 (12.1)	1110 / 19117 (5.8)	45.3
Manfrini ¹⁴	EMMANACE, UK†	ACS	2003-04	350 / 1602 (21.8)	114 / 555 (20.5)	236 / 1047 (22.5)	32.6
Sun ¹⁵	Beijing, China†	ACS	2007-08	51 / 729 (7.0)	20 / 215 (9.3)	31 / 514 (6.0)	39.2
Rossini ¹⁶	Bergamo, Italy	ACS	2009	318 / 2438 (13.0)			
Total number of observations - n/N (%)				2949 / 34685 (8.5)	1143 / 9378 (12.2)	1448 / 22869 (6.5)	43.4
[% min - % max]				[5.4-21.8]	[9.0- 20.5]	[3.7-22.5]	
Larsen ¹⁷	APPROACH, Canada§	MINOCA	1999-00	725 / 9796 (7.4)	283 / 2530 (11.2)	442 / 7266 (6.1)	39.0
Bainey ¹⁸	APPROACH, Canada	MINOCA	2002-14	2092 / 35928 (5.8)	1108 / n.a. (n.a.)	984 / n.a. (n.a.)	53.0
Frycz-Kurek ¹⁹	PL-ACS, Poland	MINOCA	2003-06	972 / 32959 (2.9)			
Agewall ²⁰	SMINC, Sweden	MINOCA	2003	11 / 152 (7.2)	9 / 27 (33.3)	2 / 125 (1.6)	81.8
Lindah ²¹	SWEDEHEART, Sweden	MINOCA	2003-13	9466 / 118260 (8.0)			
Baccouche ²²	Stuttgart, Germany	MINOCA	2004-07	162 / 1174 (13.8)			
André ²³	FAST-MI, France	MINOCA	2005	167 / 2582 (6.5)	73 / 719 (10.2)	94 / 1863 (5.2)	43.7
Kang ²⁴	KAMIR, Korea	MINOCA	2005-06	372 / 8510 (4.4)	146 / 2445 (6.0)	226 / 6065 (3.7)	39.2
Johnston ⁶	SCAAR, Sweden†	MINOCA	2005-10	13172 / 95846 (13.7)	7333 / 32489 (22.6)	5839 / 63357 (9.2)	55.7
Rhew ²⁵	Chonnam, Korea	MINOCA	2006-08	100 / 1220 (8.2)	41 / 353 (11.6)	59 / 867 (6.8)	41.0
Smilowitz ²⁶	ACTION, USA	MINOCA	2007-14	18918 / 322523 (5.9)	11763 / 112547 (10.5)	7155 / 209976 (3.4)	62.2
Hamdan ³⁸	Beirut, Lebanon	MINOCA	2008-09	11 / 124 (8.9)	7 / 31 (22.6)	4 / 93 (4.3)	63.6
Hjort ²⁷	SWEDEHEART, Sweden	MINOCA	2009-13	1639 / 18943 (8.7)	1050 / 6125 (17.1)	589 / 12818 (4.6)	64.1
Baron ²⁸	SWEDEHEART, Sweden	MINOCA	2011-13	3533 / 41817 (8.4)	2086 / 12863 (16.2)	1447 / 28954 (5.0)	59.0
Total number of observations - n/N (%)				51340 / 689834 (7.4)	23899 / 170129 (14.0)	16841 / 331384 (5.1)	58.7%
[% min - % max]				[2.9-13.8]	[6.0-33.3]	[1.6-9.2]	
Larson ²⁹	Minneapolis, USA	STEMI	2003-06	127 / 1335 (9.5)	52 / 381 (13.6)	75 / 954 (7.9)	40.9
Johnston ⁶	SCAAR, Sweden	STEMI	2005-10	2268 / 31648 (7.2)	976 / 9612 (10.2)	1292 / 22036 (5.9)	43.0
Smilowitz ²⁶	ACTION, USA	STEMI	2007-14	3204 / 146003 (2.2)	1611 / 44969 (3.6)	1593 / 101034 (1.6)	50.3
Andersson ³⁰	Denmark	STE-ACS	2009-14	554 / 4793 (11.6)	212 / 1313 (16.1)	342 / 3480 (9.8)	38.3
Total number of observations - n/N (%)				6153 / 183779 (3.3)	2851 / 56275 (5.1)	3302 / 127504 (2.6)	46.3%
[% min - % max]				[2.2-11.6]	[3.6-16.1]	[1.6-9.8]	

Reference	Registry/Trial and/or Country	Disease	Period	All n / N (%)	Women n / N (%)	Men n / N (%)	n-W in n-All (%)
Patel ³¹	CRUSADE	NSTEMI	2001-03	3306 / 38301 (8,6)	1873 / 14261 (13,1)	1433 / 24040 (6,0)	56,7
Gehrie ³²	CRUSADE	NSTEMI	2001-05	4903 / 51608 (9,5)	2882 / 19602 (14,7)	2021 / 32006 (6,3)	58,8
Planer ³³	ACUITY Trial §	NSTEMI	2003-05	197 / 2442 (8,1)	105 / 824 (12,7)	92 / 1618 (5,7)	53,3
Johnston ⁶	SCAAR, Sweden	NSTEMI	2005-10	10904 / 64198 (17,0)	6357 / 22877 (27,8)	4547 / 41321 (11,0)	58,3
Smilowitz ²⁶	ACTION, USA	NSTEMI	2007-14	15714 / 176520 (8,9)	10152 / 67578 (15,0)	5562 / 108942 (5,1)	64,6
Total number of observations - n/N (%)				35024 / 333069 (10.5)	21369 / 125142 (17.1)	13655 / 207927 (6.6)	61.0%
[% min - % max]				[8.1-17.0]	[12.7-27.8]	[5.7-11.0]	
De Ferrari ³⁴	n. 8 TIMI Trial	NSTE-ACS	1994-08	3550 / 37101 (9,6)	1974 / 11823 (16,7)	1576 / 25278 (6,2)	55,6
Roe ³⁵	PURSUIT Trial	NSTE-ACS	1995-97	696 / 5767 (12,1)	346 / 1862 (18,6)	350 / 3905 (9,0)	49,7
Bugiardini ³⁶	n. 3 TIMI Trial	NSTE-ACS	1996-01	701 / 7656 (9,2)			
Glaser ³⁷	TIMI 18 Trial	NSTE-ACS	1997-99	194 / 1646 (11,8)	95 / 555 (17,1)	99 / 1091 (9,1)	49,0
Gehrie ³²	CRUSADE	NSTE-ACS	2001-05	5538 / 55514 (10,0)	3221 / 21294 (15,1)	2317 / 34220 (6,8)	58,2
Mega ³⁸	TIMI 36 Trial	NSTE-ACS	2004-07	461 / 3920 (11,8)	225 / 1162 (19,4)	236 / 2758 (8,6)	48,8
Total number of observations - n/N (%)				11140 / 111604 (10.0)	5861 / 36696 (16)	4578 / 67252 (6.8)	56.2%
[% min - % max]				[9.2-12.1]	[15.1-19.4]	[6.2-9.1]	

§ = angiograms evaluation by quantitative coronary analysis

ACTION: Registry-GWTG, Acute Coronary Treatment and Intervention Outcomes Network Registry - Get With the Guidelines;

APPROACH: Alberta Provincial Project for Outcome Assessment in Coronary Heart disease;

CASPAR: Coronary Artery Spasm in Patients with Acute Coronary Syndrome;

EMMANCE: Evaluation of Methods and Management of Acute Coronary Events;

FAST-MI: French registry of Acute ST-elevation or non-ST-elevation Myocardial Infarction;

GENESIS-PRAXY: Gender and Sex Determinants of Cardiovascular Disease: From Bench to Beyond Premature Acute Coronary Syndrome;

GRACE: Global Registry of Acute Coronary Events;

KAMIR: Korean Acute Myocardial Infarction Registry;

SCAAR: Swedish Coronary Angiography and Angioplasty Registry;

SMINC: Stockholm Myocardial Infarction with Normal Coronaries.

Supplementary Table 3.- Diagnostic evaluation of coronary microcirculation

Technique	Characteristics	Strength & Weakness
<i>Non-invasive diagnostic tests</i>		
SPECT	<p>SPECT and PET use a radioactive tracer to assess the activity of the myocardial tissue, revealing areas of decreased MBF.</p> <p>In dynamic SPECT imaging, radionuclide tracers such as ^{99m}Tc-tetroboxime which exhibit linear uptake with flow allows more accurate assessment of MBF than ^{99m}Tc-sestamibi, ^{99m}Tc-tetrofosmin or Thallium-201.</p>	<p>SPECT has worse spatial and temporal resolution than PET and is associated with more radiation exposure due to the shorter half-life of PET tracers.</p>
PET	<p>The gold-standard tracers for quantification of MBF are the following.³⁹</p> <p>¹⁵O-water is the ideal perfusion agent with 100% first-pass perfusion; its myocardial uptake is proportional to MBF, but due to its rapid clearance it cannot be used for visual analysis.⁴⁰</p> <p>¹³N-ammonia diffuses across cell membranes and gets metabolically trapped in myocardial cells, but its trapping becomes rate-limiting at high MBF.⁴⁰</p> <p>Rubidium-82 based tracers have the advantage of not requiring an on-site cyclotron, but they come with the disadvantage of significant roll-off at high MBF.³⁹</p>	<p>The main disadvantage of PET imaging is the limited clinical availability and its high cost</p> <p>Image co-registration with the anatomical information of CT scan offers better anatomical resolution and delineation of myocardial tissue.⁴⁰</p>
MCE	<p>Microbubbles are employed for the quantification of MBF.⁴¹ Microbubbles are infused iv at a constant rate to achieve steady-state concentration and then destroyed by acoustic waves. Changes of echo-signal are used to determine MBF. CFR is calculated analyzing pulse wave Doppler in the LAD artery at baseline and under hyperemic conditions (e.g. post-adenosine).⁴¹ in the absence of significant epicardial disease, CFR value <2.0 is indicative of microvascular dysfunction.</p>	<p>MCE has been widely used in clinical studies, but is technically demanding, requires relevant expertise and a slow-learning curve and may not be feasible in all patients.⁴⁰</p>
CMR	<p>Perfusion CMR assesses the presence of perfusion defects due to epicardial stenoses or microvascular disease. Early or late gadolinium enhancement can be used to show the presence of microvascular obstruction in patients with ACS pre- or post-reperfusion.⁴² Other newer CMR techniques, such as stress T1 mapping, may be superior to gadolinium based first-pass perfusion for assessing microvascular function.⁴²</p>	<p>Its use is increasing in clinical practice, although slowed by high costs.</p>
CCT	<p>Dynamic CCT imaging and myocardial attenuation gradients (endocardial versus epicardial) can be used to assess microvascular function after pharmacological vasodilation e.g. by adenosine infusion.⁴³</p>	<p>Its use is increasing in clinical practice, although slowed by the use of high dose radiation.</p>

Technique	Characteristics	Strength & Weakness
<i>Invasive diagnostic tests</i>		
Coronary angiography	Widely used in ischemic heart disease, it helps physicians to decide on eventual additional local therapies to improve myocardial perfusion. After successful revascularization of an epicardial coronary stenosis, contrast medium progression impairment could reflect microcirculation damage. Several semiquantitative or quantitative indices have been validated for determining the degree of myocardial perfusion. The most common are TIMI flow grade, corrected TFC, ⁴⁴ MBG, ⁴⁵ TMPG. ⁴⁶	Limitations are represented by: 1) semiquantitative assessment; 2) restriction to epicardial flow evaluation of TIMI flow grade and corrected TFC; 3) interindividual high variability in the assessment of TMPG and MBG.
Doppler-flow wire.	Coronary blood flow is measured by means of an intracoronary Doppler-tipped guidewire. ⁴⁷ The Doppler guidewire transmits and receives pulsed wave ultrasound signals. The wire is plugged into an external console, which analyze signals for calculating flow velocity. Characteristic of coronary microvascular obstruction are systolic flow reversal, rapid deceleration of diastolic flow (< 600 msec) and a reduced coronary flow velocity reserve.	The good point is the quantitative assessment and good reproducibility. Limitation are a potential signal instability and difficulty in guidewire positioning in complex anatomy.
CFR	The most frequent evaluation of CFR is during cardiac catheterization. CFR is ratio between resting and maximal possible coronary blood flow (hyperemia). It assesses the capacity of coronary circulation to dilate and thus increase MBF. The coronary flow velocity pattern for microcirculation impairment is defined as a diastolic deceleration time <600 ms.	CFR interrogates the overall coronary circulation without distinction between macro- and microcirculation. Other imitations are 1) high measurement variability; 2) during ACS the resting condition is highly questionable.
Thermodilution	It is a novel index based on thermodilution background. ⁴⁸ This technique uses a pressure/temperature wire and an infusion microcatheter. It has already been evaluated in vivo and in vitro.	The good point is the quantitative assessment and good reproducibility. Limitations are a potential signal instability and difficulty in guidewire positioning in complex anatomy.
IMR	IMR is the ratio of distal coronary pressure and the thermodilution-derived mean transit time during maximal hyperemia, measured with a pressure/temperature wire. IMR measures the resistance to myocardial flow, specifically related to the coronary microcirculation compartment.	IMR is an objective index dedicated to the coronary microcirculation. It has some degree of variability in the measurements resulting from the manual injection of an intracoronary bolus of saline at room temperature.

ACS= acute coronary syndrome; CCT= cardiac computed tomography; CFR= coronary flow reserve; CMR = cardiac magnetic resonance; IMR= index of microvascular resistance; LAD= left anterior descending; MBF=myocardial blood flow; MBG= myocardial blush grade; MCE= myocardial contrast echocardiography; PET = positron emission tomography; SPECT= single-photon emission computed tomography; TIMI = Thrombolysis in Myocardial Infarction; TFC= TIMI frame count; TMPG= TIMI Myocardial Perfusion Grade.

References

1. Sharaf BL, Pepine CJ, Kerensky RA, Reis SE, Reichek N, Rogers WJ, Sopko G, Kelsey SF, Holubkov R, Olson M, Miele NJ, Williams DO, Merz CN, WISE Study Group. Detailed angiographic analysis of women with suspected ischemic chest pain (pilot phase data from the NHLBI-sponsored Women's Ischemia Syndrome Evaluation [WISE] Study Angiographic Core Laboratory). *Am J Cardiol* 2001;**87**:937–941; A3.
2. Gulati M, Cooper-DeHoff RM, McClure C, Johnson BD, Shaw LJ, Handberg EM, Zineh I, Kelsey SF, Arnsdorf MF, Black HR, Pepine CJ, Merz CNB. Adverse Cardiovascular Outcomes in Women With Nonobstructive Coronary Artery Disease. *Arch Intern Med* 2009;**169**:843.
3. Jespersen L, Hvelplund A, Abildstrøm SZ, Pedersen F, Galatius S, Madsen JK, Jørgensen E, Kelbæk H, Prescott E. Stable angina pectoris with no obstructive coronary artery disease is associated with increased risks of major adverse cardiovascular events. *Eur Heart J* 2012;**33**:734–744.
4. Sedlak TL, Lee M, Izadnegahdar M, Merz CNB, Gao M, Humphries KH. Sex differences in clinical outcomes in patients with stable angina and no obstructive coronary artery disease. *Am Heart J* 2013;**166**:38–44.
5. Sharaf B, Wood T, Shaw L, Johnson BD, Kelsey S, Anderson RD, Pepine CJ, Bairey Merz CN. Adverse outcomes among women presenting with signs and symptoms of ischemia and no obstructive coronary artery disease: findings from the National Heart, Lung, and Blood Institute-sponsored Women's Ischemia Syndrome Evaluation (WISE) angiographic core lab. *Am Heart J* 2013;**166**:134–141.
6. Johnston N, Jönelid B, Christersson C, Kero T, Renlund H, Schenck-Gustafsson K, Lagerqvist B. Effect of Gender on Patients With ST-Elevation and Non-ST-Elevation Myocardial Infarction Without Obstructive Coronary Artery Disease. *Am J Cardiol* 2015;**115**:1661–1666.
7. Kissel CK, Chen G, Southern DA, Galbraith PD, Anderson TJ. Impact of clinical presentation and presence of coronary sclerosis on long-term outcome of patients with non-obstructive coronary artery disease. *BMC Cardiovasc Disord* 2018;**18**:173.
8. Shaw LJ, Shaw RE, Merz CNB, Brindis RG, Klein LW, Nallamothu B, Douglas PS, Krone RJ, McKay CR, Block PC, Hewitt K, Weintraub WS, Peterson ED, American College of Cardiology-National Cardiovascular Data Registry Investigators. Impact of ethnicity and gender differences on angiographic coronary artery disease prevalence and in-hospital mortality in the American College of Cardiology-National Cardiovascular Data Registry. *Circulation* 2008;**117**:1787–1801.
9. Maddox TM, Stanislawski MA, Grunwald GK, Bradley SM, Ho PM, Tsai TT, Patel MR, Sandhu A, Valle J, Magid DJ, Leon B, Bhatt DL, Fihn SD, Rumsfeld JS. Nonobstructive coronary artery disease and risk of myocardial infarction. *JAMA* 2014;**312**:1754–1763.
10. Davis MB, Maddox TM, Langner P, Plomondon ME, Rumsfeld JS, Duvernoy CS. Characteristics and Outcomes of Women Veterans Undergoing Cardiac Catheterization in the Veterans Affairs Healthcare System: Insights from the VA CART Program. *Circ Cardiovasc Qual Outcomes* 2015;**8**:S39–S47.
11. Ramanath VS, Armstrong DF, Grzybowski M, Rahnema-Mohagdam S, Tamhane UU, Gordon K, Froehlich JB, Eagle KA, Jackson EA. Receipt of cardiac medications upon discharge among men and
ESC Working Group on Coronary Pathophysiology & Microcirculation. Position paper on 'Coronary Microvascular Dysfunction in Cardiovascular Disease'

women with acute coronary syndrome and nonobstructive coronary artery disease. *Clin Cardiol* 2010;**33**:36–41.

12. Germing A, Lindstaedt M, Ulrich S, Grewe P, Bojara W, Lawo T, Dryander S von, Jäger D, Machraoui A, Mügge A, Lemke B. Normal angiogram in acute coronary syndrome-preangiographic risk stratification, angiographic findings and follow-up. *Int J Cardiol* 2005;**99**:19–23.
13. Dey S, Flather MD, Devlin G, Brieger D, Gurfinkel EP, Steg PG, Fitzgerald G, Jackson EA, Eagle KA, Global Registry of Acute Coronary Events investigators. Sex-related differences in the presentation, treatment and outcomes among patients with acute coronary syndromes: the Global Registry of Acute Coronary Events. *Heart* 2009;**95**:20–26.
14. Manfrini O, Morrell C, Das R, Barth JH, Hall AS, Gale CP, Cenko E, Bugiardini R, Evaluation of Methods and Management of Acute Coronary Events Study Group. Effects of angiotensin-converting enzyme inhibitors and beta blockers on clinical outcomes in patients with and without coronary artery obstructions at angiography (from a Register-Based Cohort Study on Acute Coronary Syndromes). *Am J Cardiol* 2014;**113**:1628–1633.
15. Sun J, Zhang W, Zeng Q, Dong S, Sun X. Three-year follow-up in patients with acute coronary syndrome and normal coronary angiography. *Coron Artery Dis* 2012;**23**:162–166.
16. Rossini R, Capodanno D, Lettieri C, Musumeci G, Limbruno U, Molfese M, Spatari V, Calabria P, Romano M, Tarantini G, Gavazzi A, Angiolillo DJ. Long-term outcomes of patients with acute coronary syndrome and nonobstructive coronary artery disease. *Am J Cardiol* 2013;**112**:150–155.
17. Larsen AI, Galbraith PD, Ghali WA, Norris CM, Graham MM, Knudtson ML, APPROACH Investigators. Characteristics and outcomes of patients with acute myocardial infarction and angiographically normal coronary arteries. *Am J Cardiol* 2005;**95**:261–263.
18. Baine KR, Welsh RC, Alemayehu W, Westerhout CM, Traboulsi D, Anderson T, Brass N, Armstrong PW, Kaul P. Population-level incidence and outcomes of myocardial infarction with non-obstructive coronary arteries (MINOCA): Insights from the Alberta contemporary acute coronary syndrome patients invasive treatment strategies (COAPT) study. *Int J Cardiol* 2018;**264**:12–17.
19. Frycz-Kurek AM, Gierlotka M, Gąsior M, Wilczek K, Lekston A, Kalarus Z, Poloński L. Patients with no significant lesions in coronary arteries and ST-segment elevation myocardial infarction have worse outcome than patients with non-ST-segment elevation myocardial infarction: analysis from PL-ACS Registry. *Kardiologia Pol* 2010;**68**:1211–1217.
20. Agewall S, Daniel M, Eurenus L, Ekenbäck C, Skeppholm M, Malmqvist K, Hofman-Bang C, Collste O, Frick M, Henareh L, Jernberg T, Tornvall P. Risk factors for myocardial infarction with normal coronary arteries and myocarditis compared with myocardial infarction with coronary artery stenosis. *Angiology* 2012;**63**:500–503.
21. Lindahl B, Baron T, Erlinge D, Hadziosmanovic N, Nordenskjöld A, Gard A, Jernberg T. Medical Therapy for Secondary Prevention and Long-Term Outcome in Patients With Myocardial Infarction With Nonobstructive Coronary Artery Disease. *Circulation* 2017;**135**:1481–1489.
22. Baccouche H, Mahrholdt H, Meinhardt G, Merher R, Voehringer M, Hill S, Klingel K, Kandolf R, Sechtem U, Yilmaz A. Diagnostic synergy of non-invasive cardiovascular magnetic resonance and invasive endomyocardial biopsy in troponin-positive patients without coronary artery disease. *Eur*

Heart J 2009;**30**:2869–2879.

23. André R, Elbaz M, Simon T, Khalife K, Lim P, Ennezat P-V, Coste P, Breton H Le, Bataille V, Ferrières J, Danchin N. Prevalence, clinical profile and 3-year survival of acute myocardial infarction patients with and without obstructive coronary lesions: the FAST-MI 2005 registry. *Int J Cardiol* 2014;**172**:e247-9.
24. Kang WY, Jeong MH, Ahn YK, Kim JH, Chae SC, Kim YJ, Hur SH, Seong IW, Hong TJ, Choi DH, Cho MC, Kim CJ, Seung KB, Chung WS, Jang YS, Rha SW, Bae JH, Cho JG, Park SJ, Korea Acute Myocardial Infarction Registry Investigators. Are patients with angiographically near-normal coronary arteries who present as acute myocardial infarction actually safe? *Int J Cardiol* 2011;**146**:207–212.
25. Rhew SH, Ahn Y, Kim MC, Jang SY, Cho KH, Hwang SH, Lee MG, Ko JS, Park KH, Sim DS, Yoon NS, Yoon HJ, Kim KH, Hong YJ, Park HW, Kim JH, Jeong MH, Cho JG, Park JC, Kang JC. Is Myocardial Infarction in Patients without Significant Stenosis on a Coronary Angiogram as Benign as Believed? *Chonnam Med J* 2012;**48**:39.
26. Smilowitz NR, Mahajan AM, Roe MT, Hellkamp AS, Chiswell K, Gulati M, Reynolds HR. Mortality of Myocardial Infarction by Sex, Age, and Obstructive Coronary Artery Disease Status in the ACTION Registry-GWTG (Acute Coronary Treatment and Intervention Outcomes Network Registry-Get With the Guidelines). *Circ Cardiovasc Qual Outcomes* 2017;**10**:e003443.
27. Hjort M, Lindahl B, Baron T, Jernberg T, Tornvall P, Eggers KM. Prognosis in relation to high-sensitivity cardiac troponin T levels in patients with myocardial infarction and non-obstructive coronary arteries. *Am Heart J* 2018;**200**:60–66.
28. Baron T, Hambraeus K, Sundström J, Erlinge D, Jernberg T, Lindahl B, TOTAL-AMI study group. Impact on Long-Term Mortality of Presence of Obstructive Coronary Artery Disease and Classification of Myocardial Infarction. *Am J Med* 2016;**129**:398–406.
29. Larson DM, Menssen KM, Sharkey SW, Duval S, Schwartz RS, Harris J, Meland JT, Unger BT, Henry TD. “False-positive” cardiac catheterization laboratory activation among patients with suspected ST-segment elevation myocardial infarction. *JAMA* 2007;**298**:2754–2760.
30. Andersson HB, Pedersen F, Engstrøm T, Helqvist S, Jensen MK, Jørgensen E, Kelbæk H, Räder SBEW, Saunamäki K, Bates E, Grande P, Holmvang L, Clemmensen P. Long-term survival and causes of death in patients with ST-elevation acute coronary syndrome without obstructive coronary artery disease. *Eur Heart J* 2018;**39**:102–110.
31. Patel MR, Chen AY, Peterson ED, Newby LK, Pollack C V., Brindis RG, Gibson CM, Kleiman NS, Saucedo JF, Bhatt DL, Gibler WB, Ohman EM, Harrington RA, Roe MT. Prevalence, predictors, and outcomes of patients with non-ST-segment elevation myocardial infarction and insignificant coronary artery disease: Results from the Can Rapid risk stratification of Unstable angina patients Suppress ADverse outcomes with Early. *Am Heart J* 2006;**152**:641–647.
32. Gehrie ER, Reynolds HR, Chen AY, Neelon BH, Roe MT, Gibler WB, Ohman EM, Newby LK, Peterson ED, Hochman JS. Characterization and outcomes of women and men with non-ST-segment elevation myocardial infarction and nonobstructive coronary artery disease: results from the Can Rapid Risk Stratification of Unstable Angina Patients Suppress Adverse Outcomes with Early. *Am Heart J* 2009;**158**:688–694.

33. Planer D, Mehran R, Ohman EM, White HD, Newman JD, Xu K, Stone GW. Prognosis of patients with non-ST-segment-elevation myocardial infarction and nonobstructive coronary artery disease: propensity-matched analysis from the Acute Catheterization and Urgent Intervention Triage Strategy trial. *Circ Cardiovasc Interv* 2014;**7**:285–293.
34. Ferrari GM De, Fox KA, White JA, Giugliano RP, Tricoci P, Reynolds HR, Hochman JS, Gibson CM, Thérroux P, Harrington RA, Werf F Van de, White HD, Califf RM, Newby LK. Outcomes among non-ST-segment elevation acute coronary syndromes patients with no angiographically obstructive coronary artery disease: observations from 37,101 patients. *Eur Hear J Acute Cardiovasc Care* 2014;**3**:37–45.
35. Roe MT, Harrington RA, Prosper DM, Pieper KS, Bhatt DL, Lincoff AM, Simoons ML, Akkerhuis M, Ohman EM, Kitt MM, Vahanian A, Ruzyllo W, Karsch K, Califf RM, Topol EJ. Clinical and therapeutic profile of patients presenting with acute coronary syndromes who do not have significant coronary artery disease. The Platelet Glycoprotein IIb/IIIa in Unstable Angina: Receptor Suppression Using Integrilin Therapy (PURSUIT) Trial. *Circulation* 2000;**102**:1101–1106.
36. Bugiardini R, Manfrini O, Ferrari GM De. Unanswered Questions for Management of Acute Coronary Syndrome. *Arch Intern Med* 2006;**166**:1391.
37. Glaser R, Herrmann HC, Murphy SA, Demopoulos LA, DiBattiste PM, Cannon CP, Braunwald E. Benefit of an early invasive management strategy in women with acute coronary syndromes. *JAMA* 2002;**288**:3124–3129.
38. Mega JL, Hochman JS, Scirica BM, Murphy SA, Sloan S, McCabe CH, Merlini P, Morrow DA. Clinical features and outcomes of women with unstable ischemic heart disease: observations from metabolic efficiency with ranolazine for less ischemia in non-ST-elevation acute coronary syndromes-thrombolysis in myocardial infarction 36 (MERLIN-TIMI 36). *Circulation* 2010;**121**:1809–1817.
39. Zobel EH, Winther SA, Hasbak P, Scholten BJ von, Holmvang L, Kjaer A, Rossing P, Hansen TW. Myocardial flow reserve assessed by cardiac 82Rb positron emission tomography/computed tomography is associated with albumin excretion in patients with Type 1 diabetes. *Eur Heart J Cardiovasc Imaging* 2019;**20**:796–803.
40. Feher A, Sinusas AJ. Quantitative Assessment of Coronary Microvascular Function: Dynamic Single-Photon Emission Computed Tomography, Positron Emission Tomography, Ultrasound, Computed Tomography, and Magnetic Resonance Imaging. *Circ Cardiovasc Imaging* 2017;**10**:e006427.
41. Rigo F, Sicari R, Gherardi S, Djordjevic-Dikic A, Cortigiani L, Picano E. The additive prognostic value of wall motion abnormalities and coronary flow reserve during dipyridamole stress echo. *Eur Heart J* 2008;**29**:79–88.
42. Liu A, Wijesurendra RS, Liu JM, Greiser A, Jerosch-Herold M, Forfar JC, Channon KM, Piechnik SK, Neubauer S, Kharbanda RK, Ferreira VM. Gadolinium-Free Cardiac MR Stress T1-Mapping to Distinguish Epicardial From Microvascular Coronary Disease. *J Am Coll Cardiol* 2018;**71**:957–968.
43. Hedgire S, Baliyan V, Zucker EJ, Bittner DO, Staziaki P V, Takx RAP, Scholtz J-E, Meyersohn N, Hoffmann U, Ghoshhajra B. Perivascular Epicardial Fat Stranding at Coronary CT Angiography: A Marker of Acute Plaque Rupture and Spontaneous Coronary Artery Dissection. *Radiology* 2018;**287**:808–815.

44. Gibson CM, Cannon CP, Daley WL, Dodge JT, Alexander B, Marble SJ, McCabe CH, Raymond L, Fortin T, Poole WK, Braunwald E. TIMI frame count: a quantitative method of assessing coronary artery flow. *Circulation* 1996;**93**:879–888.
45. Luca G De, 't Hof AWJ van, Ottervanger JP, Hoorntje JCA, Gosselink ATM, Dambrink J-HE, Zijlstra F, Boer M-J de, Suryapranata H. Unsuccessful reperfusion in patients with ST-segment elevation myocardial infarction treated by primary angioplasty. *Am Heart J* 2005;**150**:557–562.
46. Gibson CM, Cannon CP, Murphy SA, Ryan KA, Mesley R, Marble SJ, McCabe CH, Werf F Van De, Braunwald E. Relationship of TIMI myocardial perfusion grade to mortality after administration of thrombolytic drugs. *Circulation* 2000;**101**:125–130.
47. Joye JD, Schulman DS, Lasorda D, Farah T, Donohue BC, Reichek N. Intracoronary Doppler guide wire versus stress single-photon emission computed tomographic thallium-201 imaging in assessment of intermediate coronary stenoses. *J Am Coll Cardiol* 1994;**24**:940–947.
48. Williams RP, Waard GA de, Silva K De, Lumley M, Asrress K, Arri S, Ellis H, Mir A, Clapp B, Chiribiri A, Plein S, Teunissen PF, Hollander MR, Marber M, Redwood S, Royen N van, Perera D. Doppler Versus Thermodilution-Derived Coronary Microvascular Resistance to Predict Coronary Microvascular Dysfunction in Patients With Acute Myocardial Infarction or Stable Angina Pectoris. *Am J Cardiol* 2018;**121**:1–8.

